

Data Path : Z:\pestpcbsrv\HPCHEM1\ECD\_P\Data\PP051021\  
 Data File : PP035757.D  
 Signal(s) : Signal #1: ECD1A.CH Signal #2: ECD2B.CH  
 Acq On : 11 May 2021 5:36  
 Operator : DD\AJ  
 Sample : M2334-01  
 Misc :  
 ALS Vial : 51 Sample Multiplier: 1

Instrument :  
 ECD\_P  
 ClientSampleId :  
 CHRT-20111

Integration File signal 1: autoint1.e  
 Integration File signal 2: autoint2.e  
 Quant Time: May 11 06:51:22 2021  
 Quant Method : Z:\pestpcbsrv\HPCHEM1\ECD\_P\methods\PP051021.M  
 Quant Title : GC EXTRACTABLES  
 QLast Update : Tue May 11 06:42:19 2021  
 Response via : Initial Calibration  
 Integrator: ChemStation 6890 Scale Mode: Small noise peaks clipped

Volume Inj. : 2 µl  
 Signal #1 Phase : ZB-MR1 Signal #2 Phase: ZB-MR2  
 Signal #1 Info : 30Mx0.32mmx 0.50µ Signal #2 Info : 30M x 0.32mm x 0.25µm

Compound	RT#1	RT#2	Resp#1	Resp#2	ng/ml	ng/ml
-----						
System Monitoring Compounds						
1) SA Tetrachlo...	4.777	4.197	496151	682587	21.175	20.080
2) SA Decachlor...	10.619	9.438	197290	333131	17.528	15.753

Target Compounds

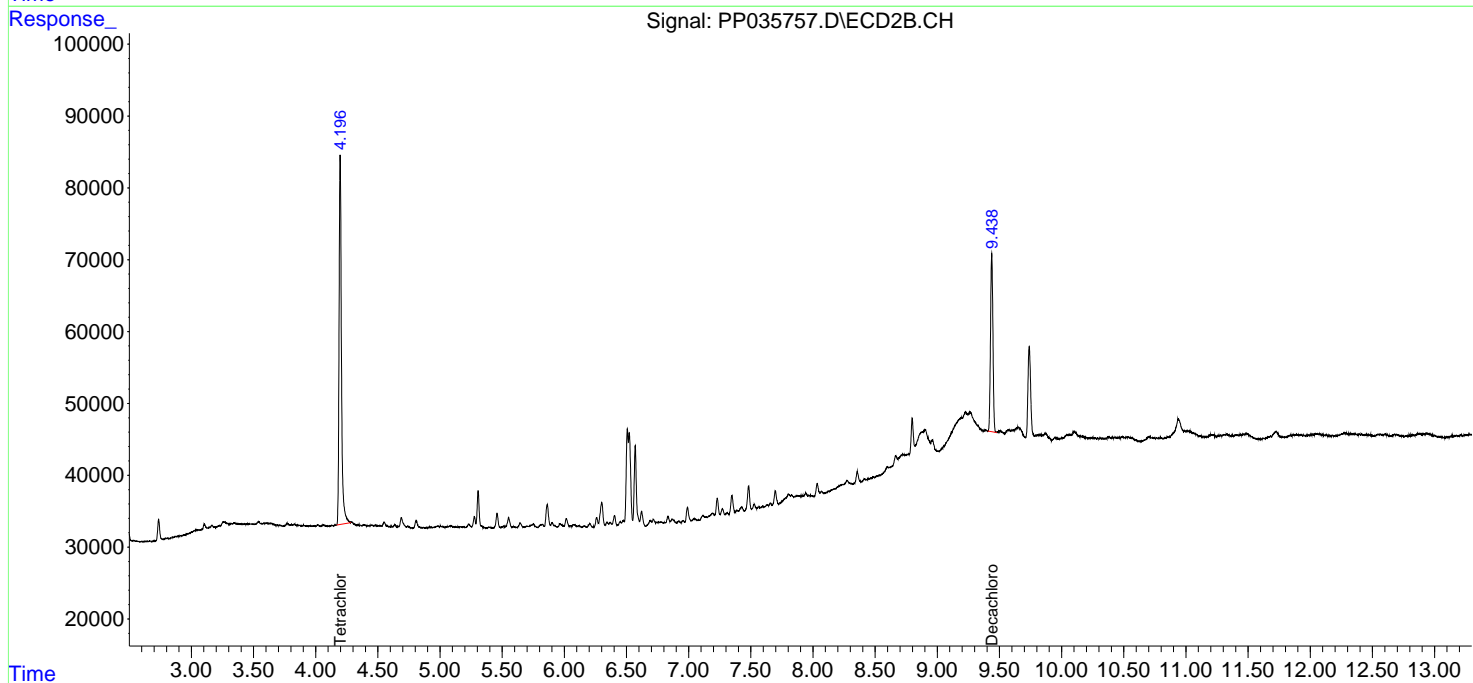
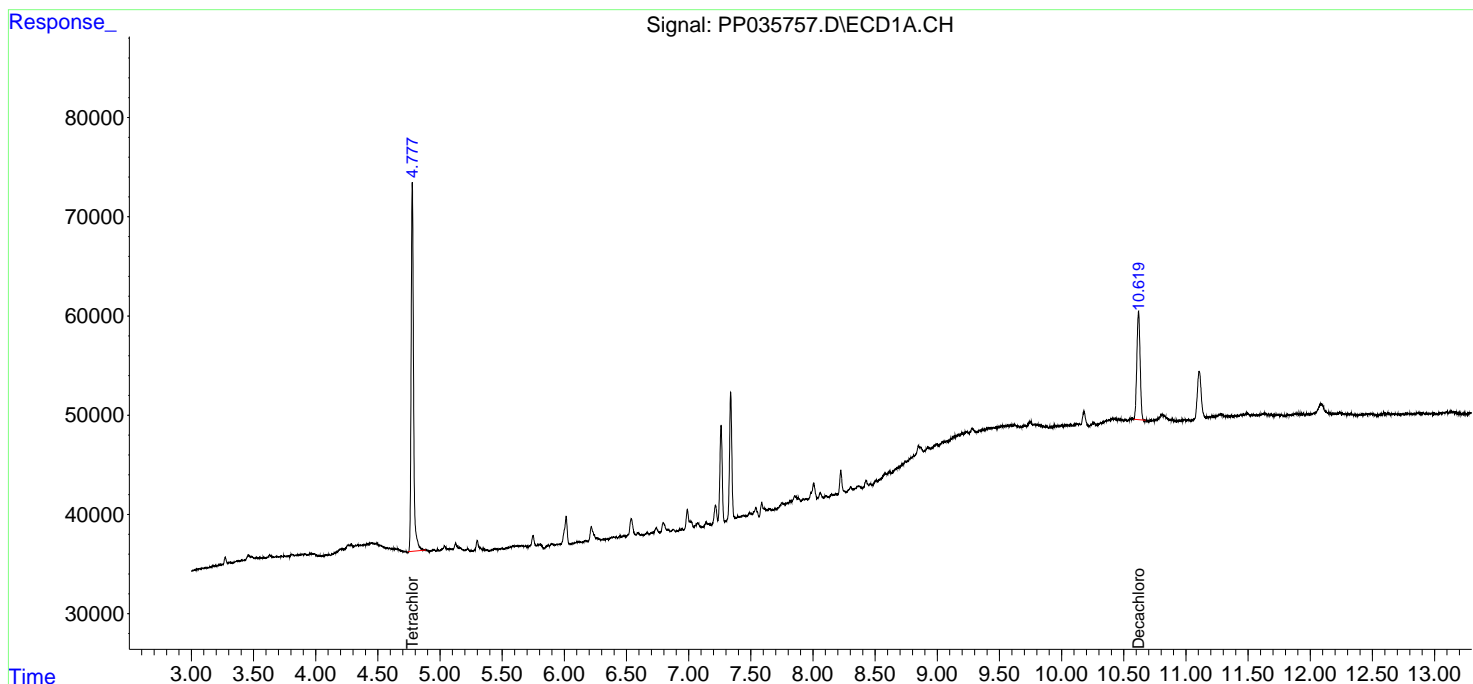
-----  
 (f)=RT Delta > 1/2 Window (#)=Amounts differ by > 25% (m)=manual int.

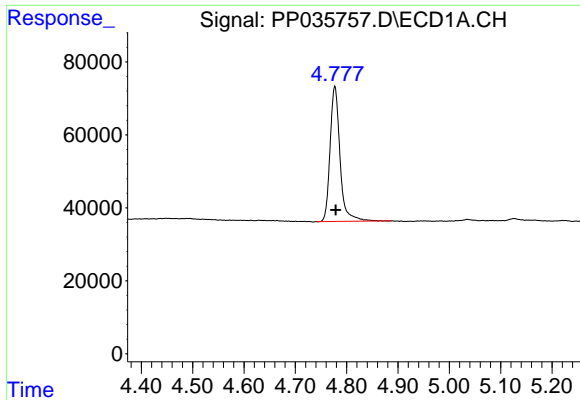
Data Path : Z:\pestpcbsrv\HPCHEM1\ECD\_P\Data\PP051021\  
 Data File : PP035757.D  
 Signal(s) : Signal #1: ECD1A.CH Signal #2: ECD2B.CH  
 Acq On : 11 May 2021 5:36  
 Operator : DD\AJ  
 Sample : M2334-01  
 Misc :  
 ALS Vial : 51 Sample Multiplier: 1

Instrument :  
 ECD\_P  
 ClientSampleId :  
 CHRT-20111

Integration File signal 1: autoint1.e  
 Integration File signal 2: autoint2.e  
 Quant Time: May 11 06:51:22 2021  
 Quant Method : Z:\pestpcbsrv\HPCHEM1\ECD\_P\methods\PP051021.M  
 Quant Title : GC EXTRACTABLES  
 QLast Update : Tue May 11 06:42:19 2021  
 Response via : Initial Calibration  
 Integrator: ChemStation 6890 Scale Mode: Small noise peaks clipped

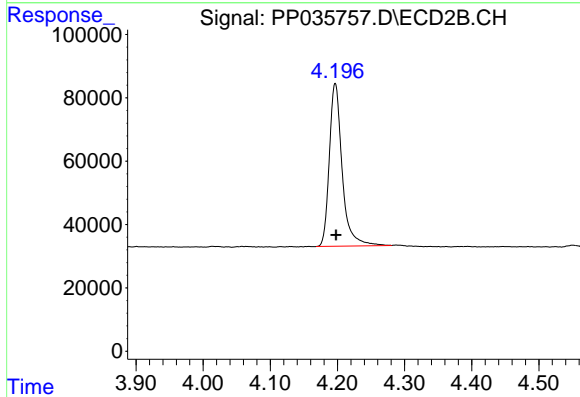
Volume Inj. : 2 µl  
 Signal #1 Phase : ZB-MR1 Signal #2 Phase: ZB-MR2  
 Signal #1 Info : 30Mx0.32mmx 0.50µ Signal #2 Info : 30M x 0.32mm x 0.25µm



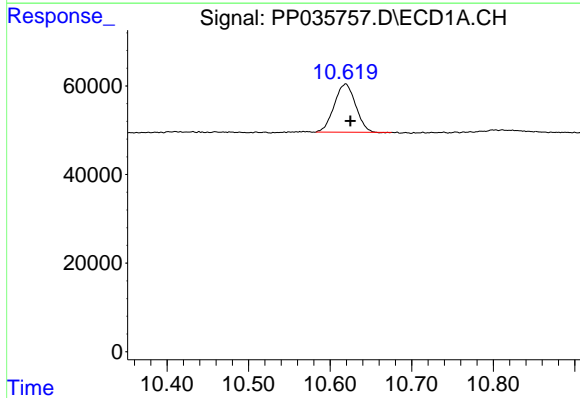


#1 Tetrachloro-m-xylene  
 R.T.: 4.777 min  
 Delta R.T.: -0.002 min  
 Response: 496151  
 Conc: 21.18 ng/ml

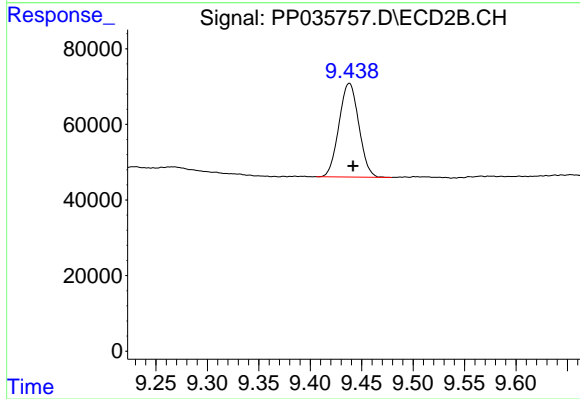
Instrument :  
 ECD\_P  
 ClientSampled :  
 CHRT-20111



#1 Tetrachloro-m-xylene  
 R.T.: 4.197 min  
 Delta R.T.: 0.000 min  
 Response: 682587  
 Conc: 20.08 ng/ml



#2 Decachlorobiphenyl  
 R.T.: 10.619 min  
 Delta R.T.: -0.006 min  
 Response: 197290  
 Conc: 17.53 ng/ml



#2 Decachlorobiphenyl  
 R.T.: 9.438 min  
 Delta R.T.: -0.004 min  
 Response: 333131  
 Conc: 15.75 ng/ml