

Data Path : Z:\pestpcbsrv\HPCHEM1\ECD_P\Data\PP051022\
 Data File : PP047326.D
 Signal(s) : Signal #1: ECD1A.ch Signal #2: ECD2B.ch
 Acq On : 10 May 2022 10:01
 Operator : YP\AJ
 Sample : I.BLK
 Misc :
 ALS Vial : 2 Sample Multiplier: 1

Instrument :
 ECD_P
 ClientSampleId :
 I.BLK

Integration File signal 1: autoint1.e
 Integration File signal 2: autoint2.e
 Quant Time: May 10 18:36:02 2022
 Quant Method : Z:\pestpcbsrv\HPCHEM1\ECD_P\methods\PP051022.M
 Quant Title : GC EXTRACTABLES
 QLast Update : Tue May 10 18:34:51 2022
 Response via : Initial Calibration
 Integrator: ChemStation

Volume Inj. : 2 µl
 Signal #1 Phase : ZB-MR1 Signal #2 Phase: ZB-MR2
 Signal #1 Info : 30Mx0.32mmx 0.50µ Signal #2 Info : 30M x 0.32mm x 0.25µm

Compound	RT#1	RT#2	Resp#1	Resp#2	ng/ml	ng/ml

System Monitoring Compounds						
1) SA Tetrachlo...	3.851	3.116	65423664	86464734	25.734	26.261
2) SA Decachlor...	9.917	8.423	38128735	70119766	26.653	25.761

Target Compounds

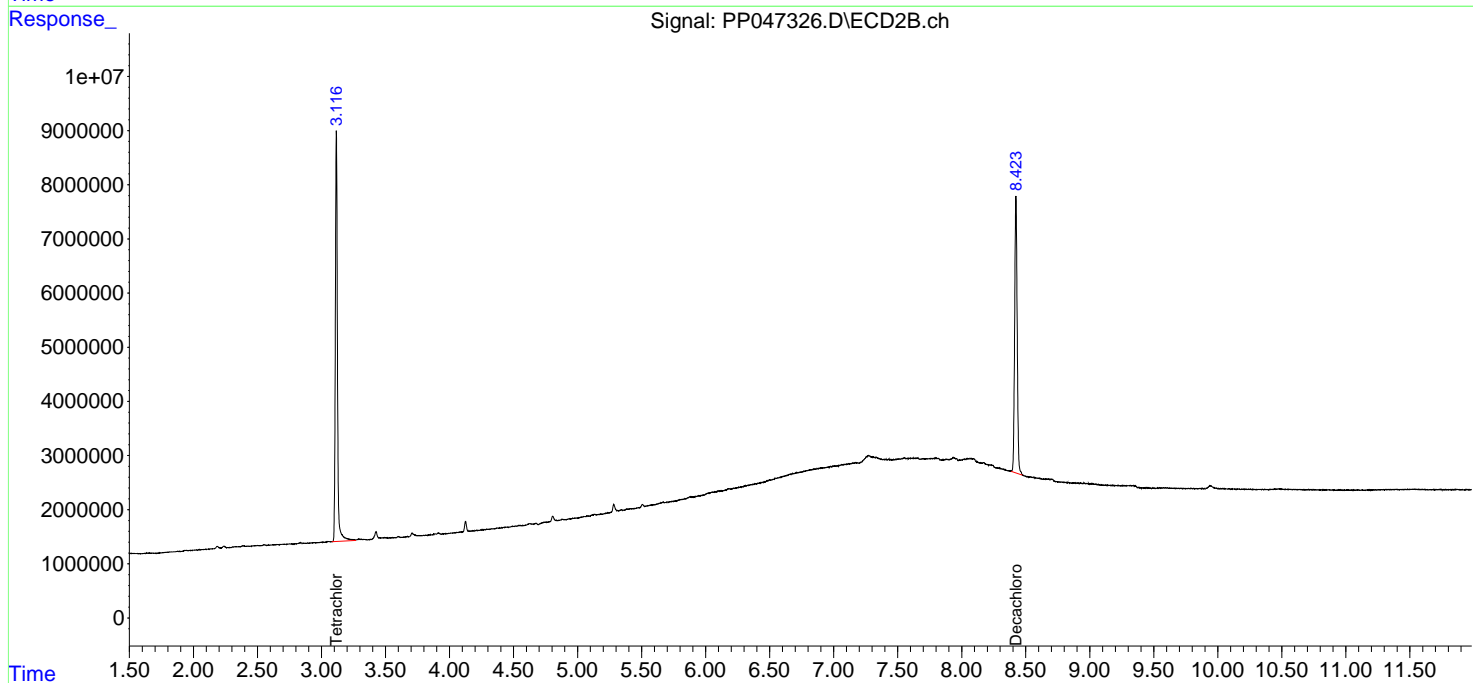
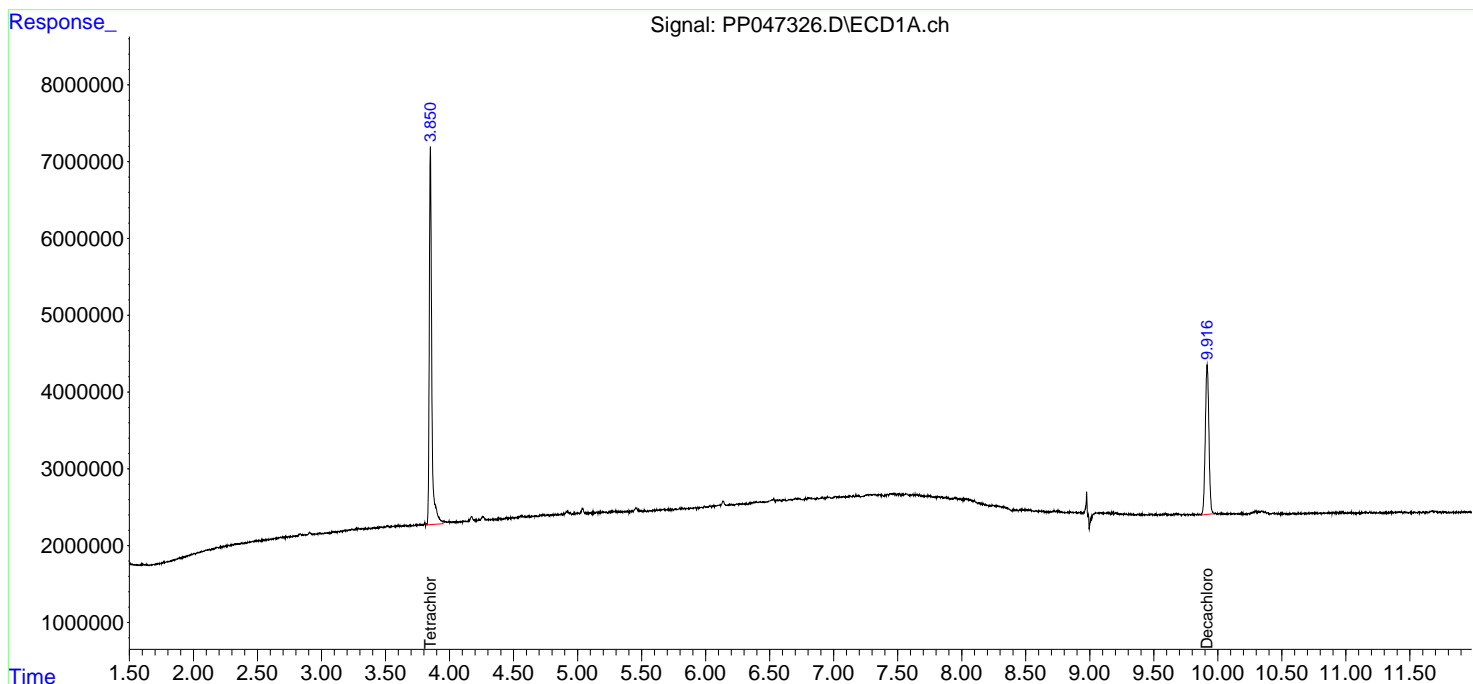
 (f)=RT Delta > 1/2 Window (#)=Amounts differ by > 25% (m)=manual int.

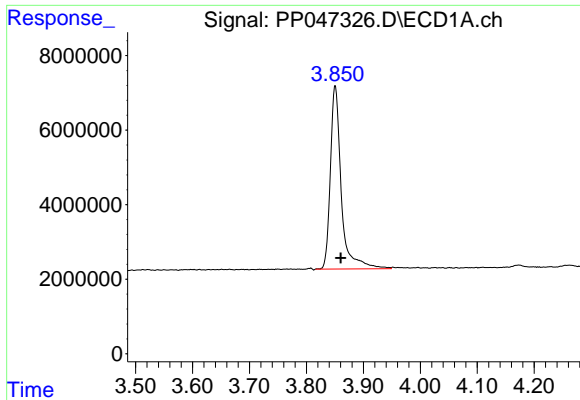
Data Path : Z:\pestpcbsrv\HPCHEM1\ECD_P\Data\PP051022\
 Data File : PP047326.D
 Signal(s) : Signal #1: ECD1A.ch Signal #2: ECD2B.ch
 Acq On : 10 May 2022 10:01
 Operator : YP\AJ
 Sample : I.BLK
 Misc :
 ALS Vial : 2 Sample Multiplier: 1

Instrument :
 ECD_P
 ClientSampleId :
 I.BLK

Integration File signal 1: autoint1.e
 Integration File signal 2: autoint2.e
 Quant Time: May 10 18:36:02 2022
 Quant Method : Z:\pestpcbsrv\HPCHEM1\ECD_P\methods\PP051022.M
 Quant Title : GC EXTRACTABLES
 QLast Update : Tue May 10 18:34:51 2022
 Response via : Initial Calibration
 Integrator: ChemStation

Volume Inj. : 2 µl
 Signal #1 Phase : ZB-MR1 Signal #2 Phase: ZB-MR2
 Signal #1 Info : 30Mx0.32mmx 0.50µ Signal #2 Info : 30M x 0.32mm x 0.25µm

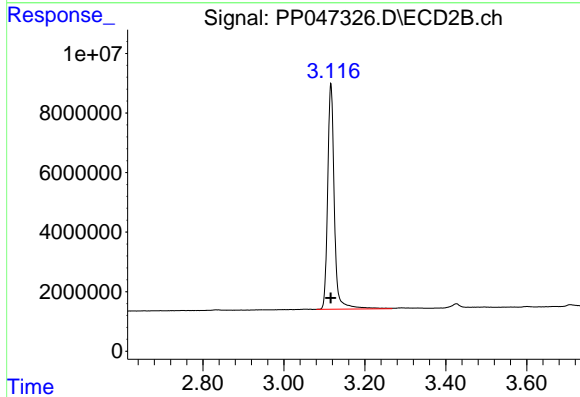




#1 Tetrachloro-m-xylene

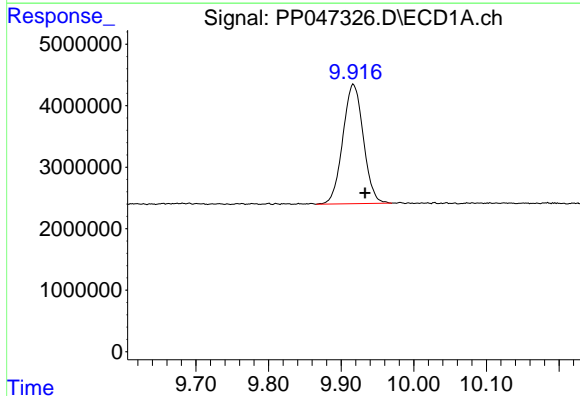
R.T.: 3.851 min
 Delta R.T.: -0.009 min
 Response: 65423664
 Conc: 25.73 ng/ml

Instrument :
 ECD_P
 ClientSampleId :
 I.BLK



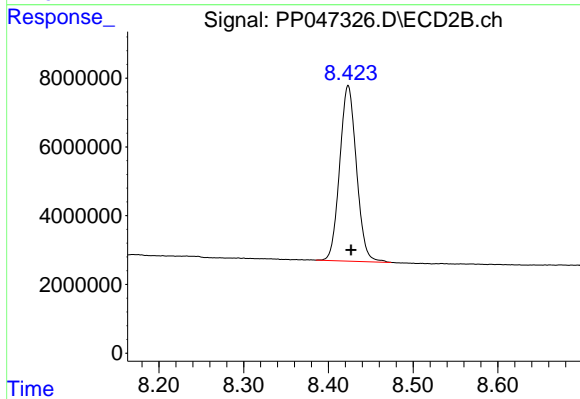
#1 Tetrachloro-m-xylene

R.T.: 3.116 min
 Delta R.T.: 0.000 min
 Response: 86464734
 Conc: 26.26 ng/ml



#2 Decachlorobiphenyl

R.T.: 9.917 min
 Delta R.T.: -0.016 min
 Response: 38128735
 Conc: 26.65 ng/ml



#2 Decachlorobiphenyl

R.T.: 8.423 min
 Delta R.T.: -0.004 min
 Response: 70119766
 Conc: 25.76 ng/ml