

Data Path : Z:\pestpcbsrv\HPCHEM1\ECD\_P\Data\PP051022\  
 Data File : PP047327.D  
 Signal(s) : Signal #1: ECD1A.ch Signal #2: ECD2B.ch  
 Acq On : 10 May 2022 10:27  
 Operator : YP\AJ  
 Sample : AR1660ICC1000  
 Misc :  
 ALS Vial : 3 Sample Multiplier: 1

**Instrument :**  
 ECD\_P  
**ClientSampleId :**  
 AR1660ICC1000

Integration File signal 1: autoint1.e  
 Integration File signal 2: autoint2.e  
 Quant Time: May 10 11:47:59 2022  
 Quant Method : Z:\pestpcbsrv\HPCHEM1\ECD\_P\methods\PP051022.M  
 Quant Title : GC EXTRACTABLES  
 QLast Update : Tue May 10 11:46:07 2022  
 Response via : Initial Calibration  
 Integrator: ChemStation

Volume Inj. : 2 µl  
 Signal #1 Phase : ZB-MR1 Signal #2 Phase: ZB-MR2  
 Signal #1 Info : 30Mx0.32mmx 0.50µ Signal #2 Info : 30M x 0.32mm x 0.25µm

Compound	RT#1	RT#2	Resp#1	Resp#2	ng/ml	ng/ml
-----						
System Monitoring Compounds						
1) SA Tetrachlo...	3.860	3.116	259.9E6	327.6E6	94.625	94.765
2) SA Decachlor...	9.931	8.428	140.0E6	272.1E6	92.155	94.199
Target Compounds						
3) L1 AR-1016-1	5.105	4.247	74076243	111.2E6	919.181	922.266
4) L1 AR-1016-2	5.128	4.265	111.7E6	167.7E6	907.170	930.293
5) L1 AR-1016-3	5.194	4.449	67898476	87358484	915.910	925.420
6) L1 AR-1016-4	5.299	4.497	56374514	69065970	892.101	907.522
7) L1 AR-1016-5	5.617	4.720	52215012	88775271	876.366	916.735
31) L7 AR-1260-1	6.841	5.820	85616161	166.8E6	911.945	935.126
32) L7 AR-1260-2	7.123	6.027	110.8E6	239.9E6	915.858	940.208
33) L7 AR-1260-3	7.516	6.187	94662329	197.5E6	920.015	941.242
34) L7 AR-1260-4	7.764	6.696	86918096	175.8E6	908.526	964.111
35) L7 AR-1260-5	8.103	6.965	175.0E6	478.9E6	929.722	969.744

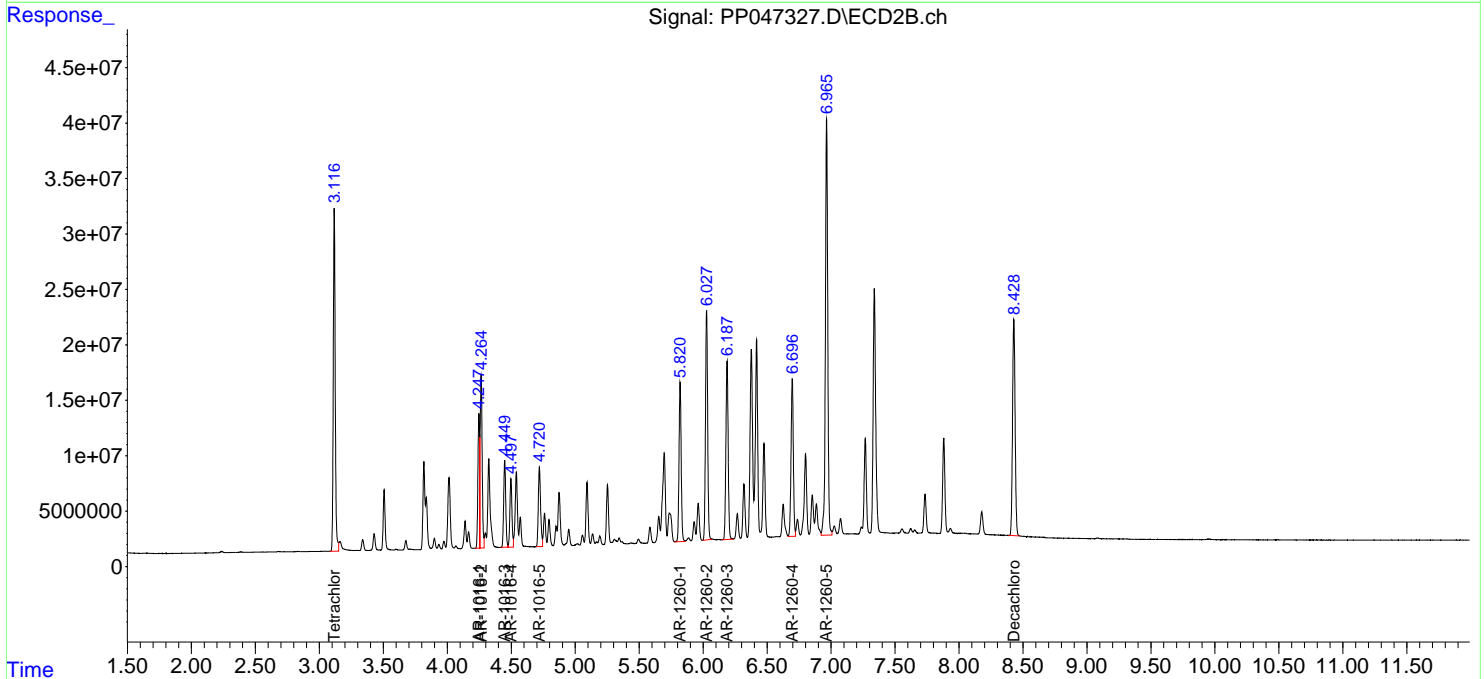
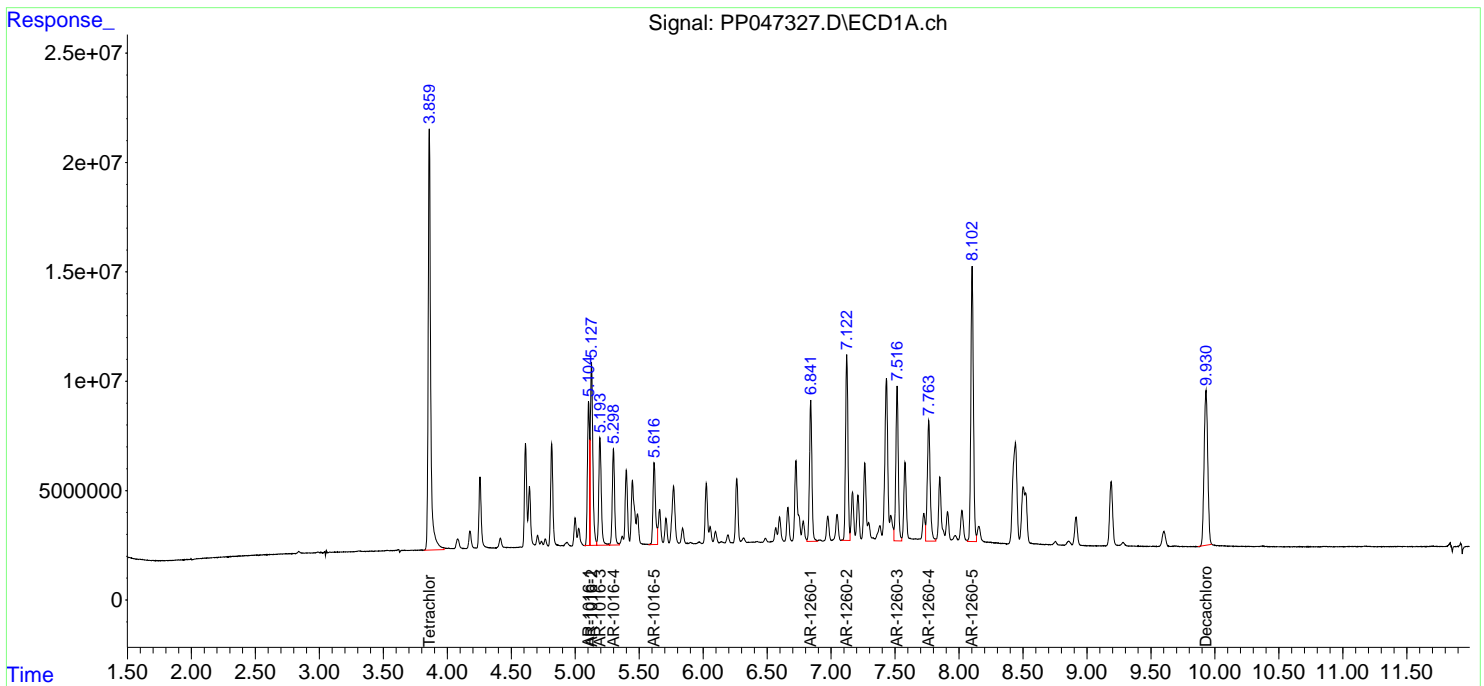
(f)=RT Delta > 1/2 Window (#)=Amounts differ by > 25% (m)=manual int.

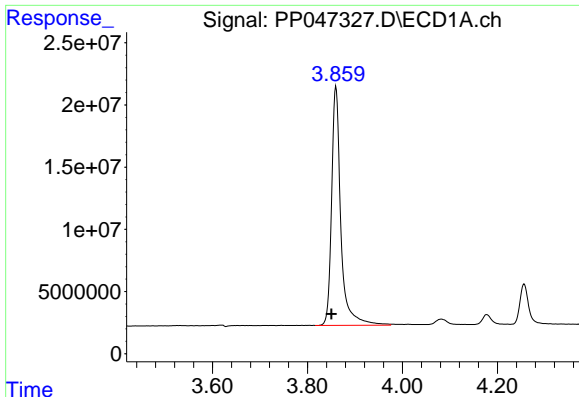
Data Path : Z:\pestpcbsrv\HPCHEM1\ECD\_P\Data\PP051022\  
 Data File : PP047327.D  
 Signal(s) : Signal #1: ECD1A.ch Signal #2: ECD2B.ch  
 Acq On : 10 May 2022 10:27  
 Operator : YP\AJ  
 Sample : AR1660ICC1000  
 Misc :  
 ALS Vial : 3 Sample Multiplier: 1

Instrument :  
 ECD\_P  
 ClientSampleId :  
 AR1660ICC1000

Integration File signal 1: autoint1.e  
 Integration File signal 2: autoint2.e  
 Quant Time: May 10 11:47:59 2022  
 Quant Method : Z:\pestpcbsrv\HPCHEM1\ECD\_P\methods\PP051022.M  
 Quant Title : GC EXTRACTABLES  
 QLast Update : Tue May 10 11:46:07 2022  
 Response via : Initial Calibration  
 Integrator: ChemStation

Volume Inj. : 2 µl  
 Signal #1 Phase : ZB-MR1 Signal #2 Phase: ZB-MR2  
 Signal #1 Info : 30Mx0.32mmx 0.50µ Signal #2 Info : 30M x 0.32mm x 0.25µm

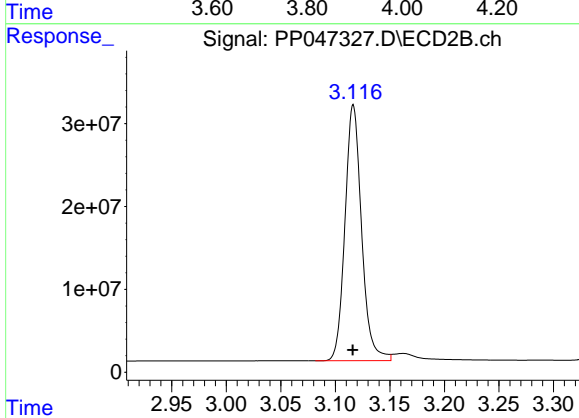




#1 Tetrachloro-m-xylene

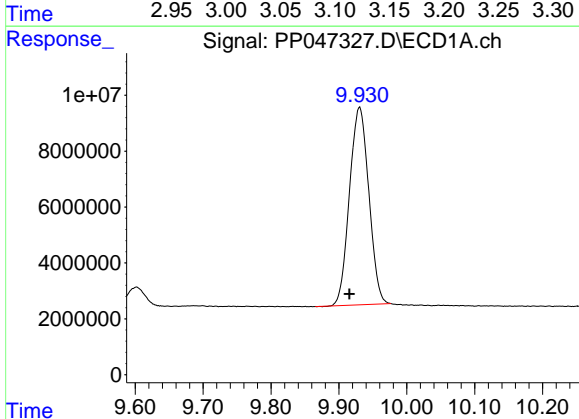
R.T.: 3.860 min  
 Delta R.T.: 0.010 min  
 Response: 259949376  
 Conc: 94.63 ng/ml

Instrument :  
 ECD\_P  
 ClientSampleId :  
 AR1660ICC1000



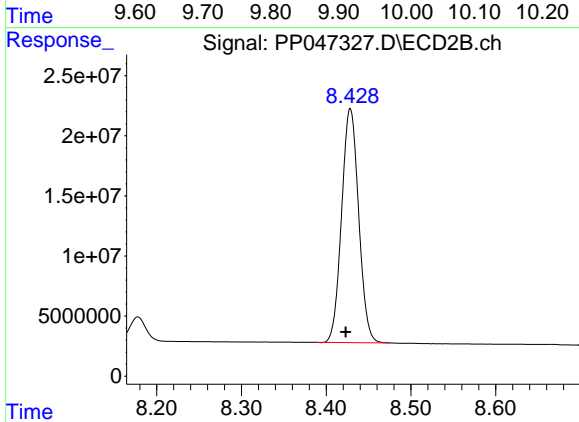
#1 Tetrachloro-m-xylene

R.T.: 3.116 min  
 Delta R.T.: 0.000 min  
 Response: 327622333  
 Conc: 94.76 ng/ml



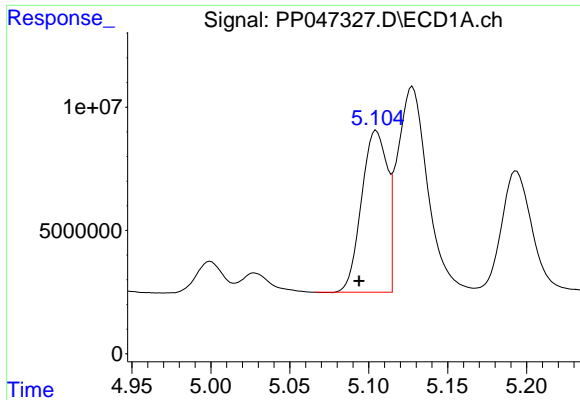
#2 Decachlorobiphenyl

R.T.: 9.931 min  
 Delta R.T.: 0.015 min  
 Response: 140006611  
 Conc: 92.15 ng/ml



#2 Decachlorobiphenyl

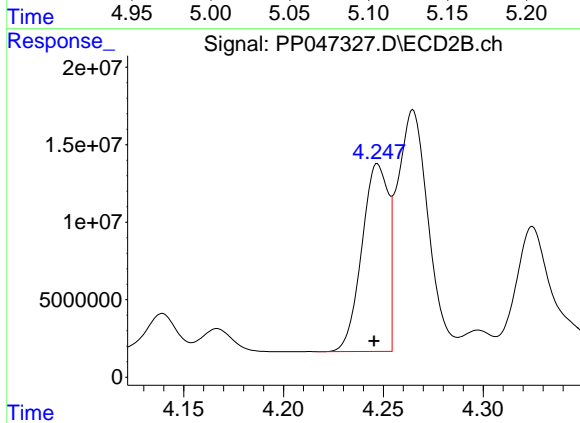
R.T.: 8.428 min  
 Delta R.T.: 0.005 min  
 Response: 272069652  
 Conc: 94.20 ng/ml



#3 AR-1016-1

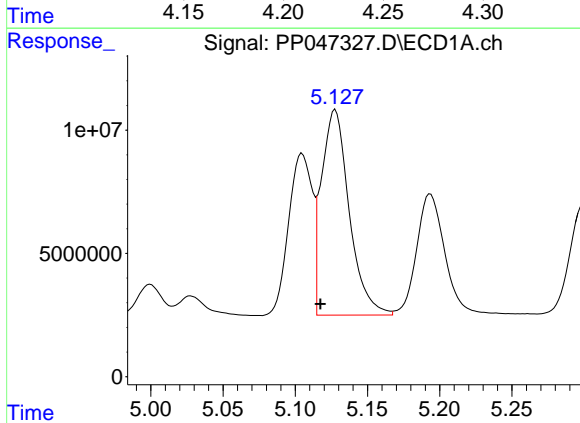
R.T.: 5.105 min  
 Delta R.T.: 0.011 min  
 Response: 74076243  
 Conc: 919.18 ng/ml

Instrument :  
 ECD\_P  
 ClientSampleId :  
 AR1660ICC1000



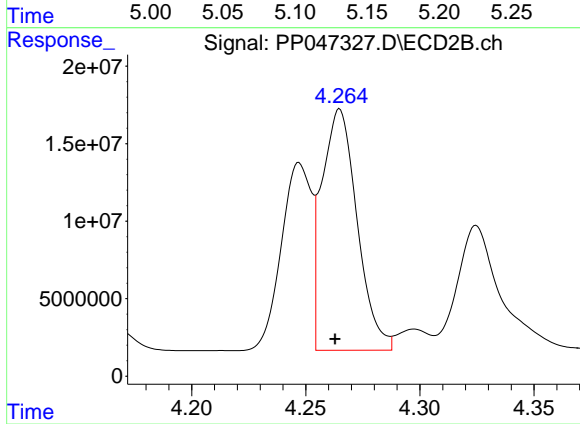
#3 AR-1016-1

R.T.: 4.247 min  
 Delta R.T.: 0.002 min  
 Response: 111212859  
 Conc: 922.27 ng/ml



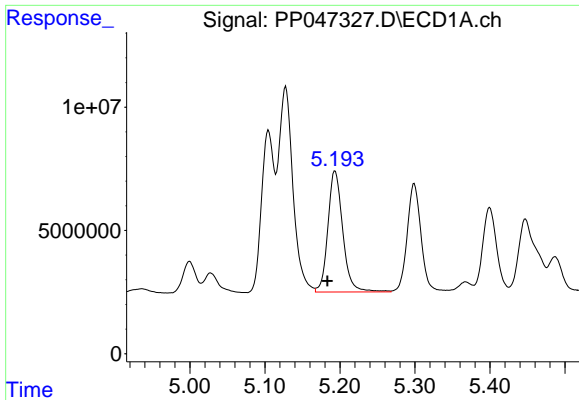
#4 AR-1016-2

R.T.: 5.128 min  
 Delta R.T.: 0.010 min  
 Response: 111703431  
 Conc: 907.17 ng/ml



#4 AR-1016-2

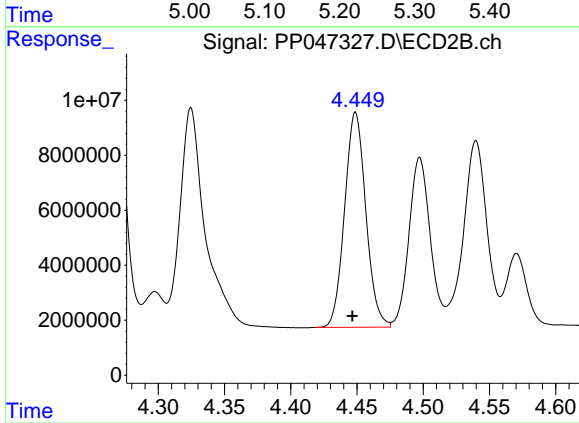
R.T.: 4.265 min  
 Delta R.T.: 0.002 min  
 Response: 167745797  
 Conc: 930.29 ng/ml



#5 AR-1016-3

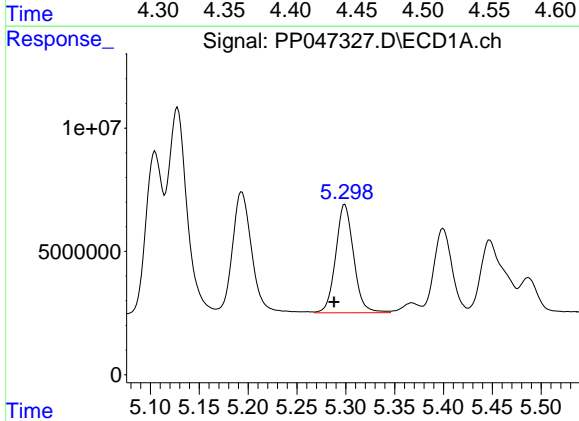
R.T.: 5.194 min  
Delta R.T.: 0.010 min  
Response: 67898476  
Conc: 915.91 ng/ml

Instrument :  
ECD\_P  
ClientSampleId :  
AR1660ICC1000



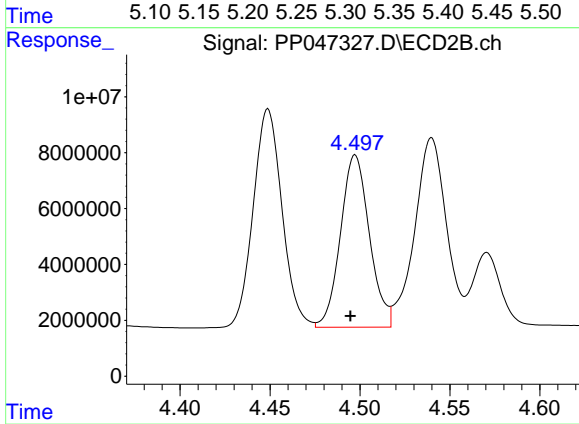
#5 AR-1016-3

R.T.: 4.449 min  
Delta R.T.: 0.002 min  
Response: 87358484  
Conc: 925.42 ng/ml



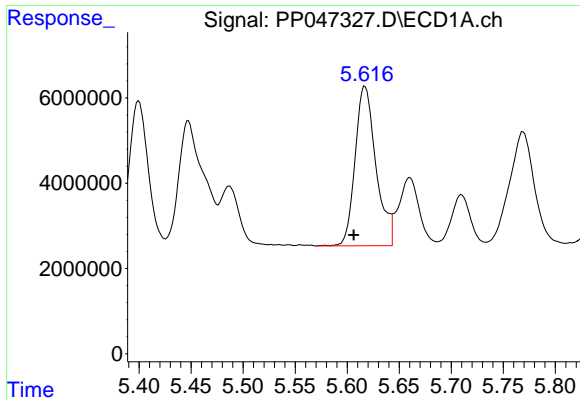
#6 AR-1016-4

R.T.: 5.299 min  
Delta R.T.: 0.011 min  
Response: 56374514  
Conc: 892.10 ng/ml



#6 AR-1016-4

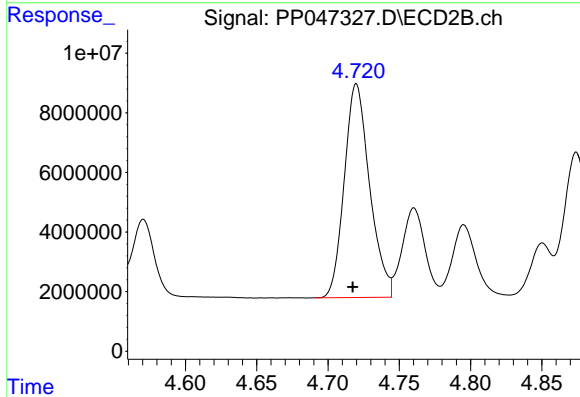
R.T.: 4.497 min  
Delta R.T.: 0.003 min  
Response: 69065970  
Conc: 907.52 ng/ml



#7 AR-1016-5

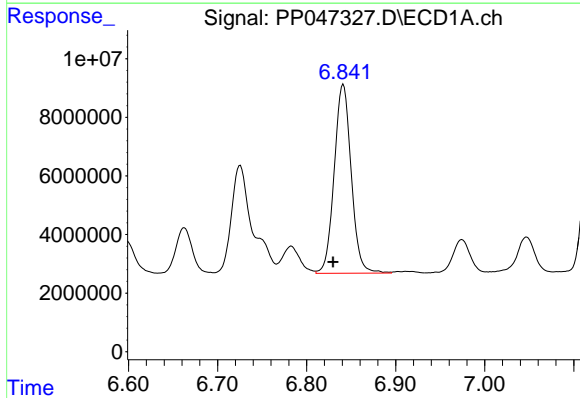
R.T.: 5.617 min  
 Delta R.T.: 0.011 min  
 Response: 52215012  
 Conc: 876.37 ng/ml

Instrument :  
 ECD\_P  
 ClientSampleId :  
 AR1660ICC1000



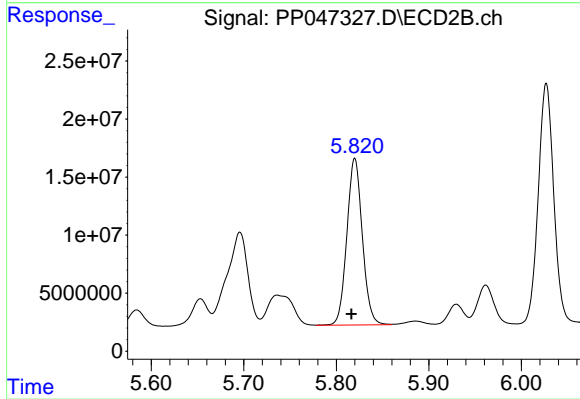
#7 AR-1016-5

R.T.: 4.720 min  
 Delta R.T.: 0.003 min  
 Response: 88775271  
 Conc: 916.73 ng/ml



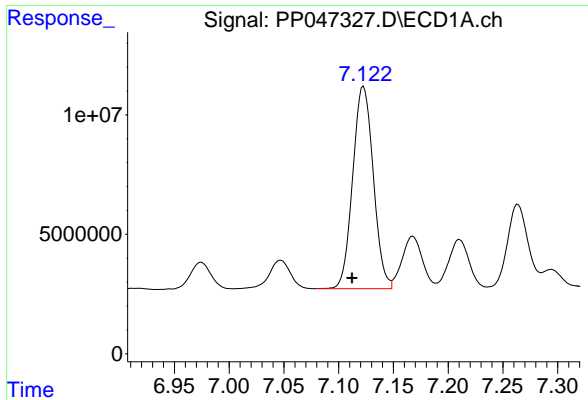
#31 AR-1260-1

R.T.: 6.841 min  
 Delta R.T.: 0.012 min  
 Response: 85616161  
 Conc: 911.95 ng/ml



#31 AR-1260-1

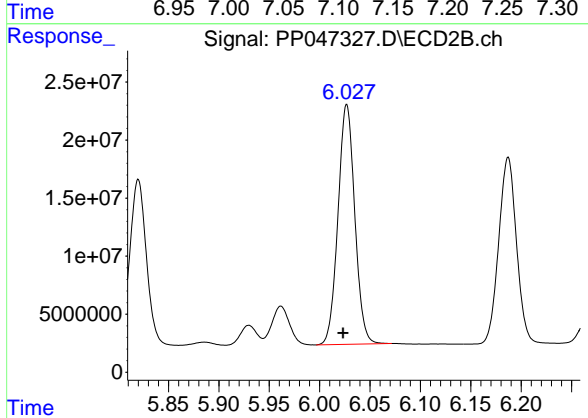
R.T.: 5.820 min  
 Delta R.T.: 0.004 min  
 Response: 166829879  
 Conc: 935.13 ng/ml



#32 AR-1260-2

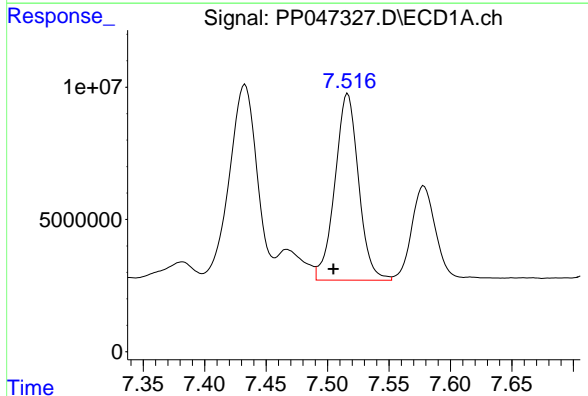
R.T.: 7.123 min  
 Delta R.T.: 0.011 min  
 Response: 110801399  
 Conc: 915.86 ng/ml

Instrument :  
 ECD\_P  
 ClientSampleId :  
 AR1660ICC1000



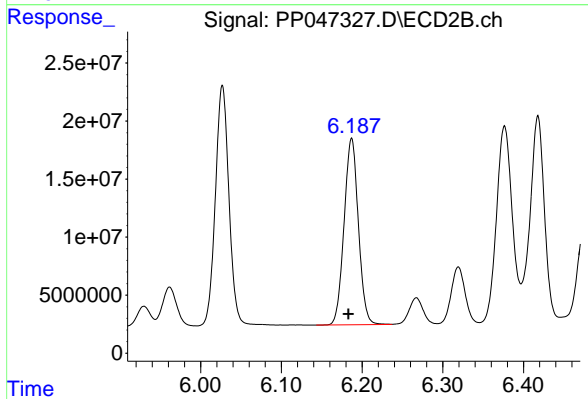
#32 AR-1260-2

R.T.: 6.027 min  
 Delta R.T.: 0.004 min  
 Response: 239879188  
 Conc: 940.21 ng/ml



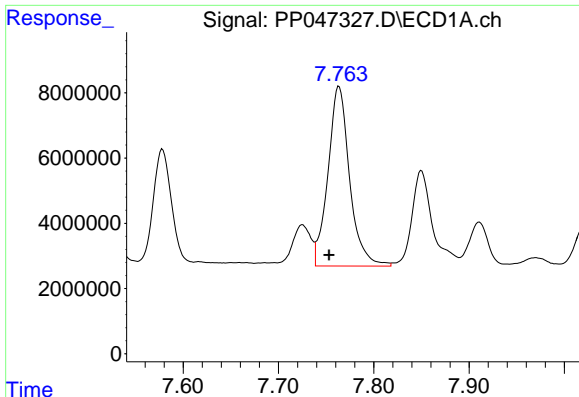
#33 AR-1260-3

R.T.: 7.516 min  
 Delta R.T.: 0.012 min  
 Response: 94662329  
 Conc: 920.01 ng/ml



#33 AR-1260-3

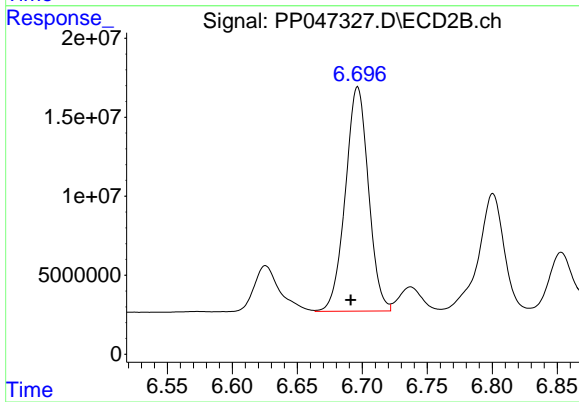
R.T.: 6.187 min  
 Delta R.T.: 0.004 min  
 Response: 197541362  
 Conc: 941.24 ng/ml



#34 AR-1260-4

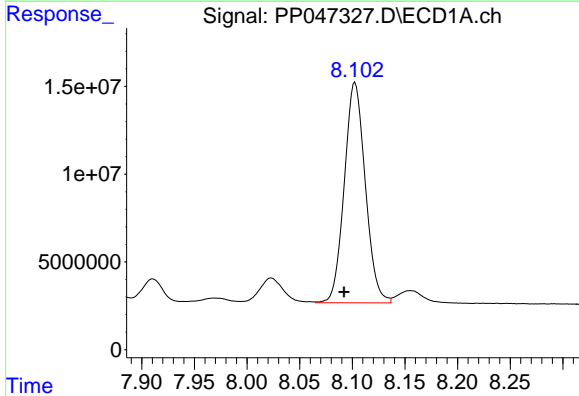
R.T.: 7.764 min  
 Delta R.T.: 0.010 min  
 Response: 86918096  
 Conc: 908.53 ng/ml

Instrument :  
 ECD\_P  
 ClientSampleId :  
 AR1660ICC1000



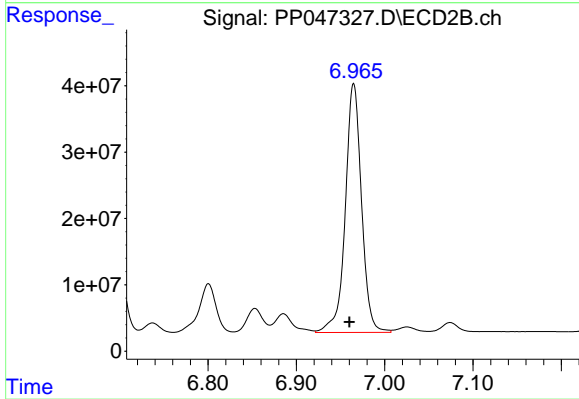
#34 AR-1260-4

R.T.: 6.696 min  
 Delta R.T.: 0.005 min  
 Response: 175841990  
 Conc: 964.11 ng/ml



#35 AR-1260-5

R.T.: 8.103 min  
 Delta R.T.: 0.010 min  
 Response: 175013829  
 Conc: 929.72 ng/ml



#35 AR-1260-5

R.T.: 6.965 min  
 Delta R.T.: 0.005 min  
 Response: 478916014  
 Conc: 969.74 ng/ml