

Data Path : Z:\pestpcbsrv\HPCHEM1\ECD_P\Data\PP051022\
 Data File : PP047356.D
 Signal(s) : Signal #1: ECD1A.ch Signal #2: ECD2B.ch
 Acq On : 10 May 2022 19:55
 Operator : YP\AJ
 Sample : AR1242CCC500
 Misc :
 ALS Vial : 12 Sample Multiplier: 1

Instrument :
 ECD_P
ClientSampleId :
 AR1242CCC500

Integration File signal 1: autoint1.e
 Integration File signal 2: autoint2.e
 Quant Time: May 10 20:28:06 2022
 Quant Method : Z:\pestpcbsrv\HPCHEM1\ECD_P\methods\PP051022.M
 Quant Title : GC EXTRACTABLES
 QLast Update : Tue May 10 18:34:51 2022
 Response via : Initial Calibration
 Integrator: ChemStation

Volume Inj. : 2 µl
 Signal #1 Phase : ZB-MR1 Signal #2 Phase: ZB-MR2
 Signal #1 Info : 30Mx0.32mmx 0.50µ Signal #2 Info : 30M x 0.32mm x 0.25µm

Compound	RT#1	RT#2	Resp#1	Resp#2	ng/ml	ng/ml

System Monitoring Compounds						
1) SA Tetrachlo...	3.849	3.115	133.9E6	172.0E6	52.672	52.242
2) SA Decachlor...	9.914f	8.421	79675069	149.7E6	55.695	54.995
Target Compounds						
16) L4 AR-1242-1	5.093	4.244	29375492	46362827	510.147	507.491
17) L4 AR-1242-2	5.116	4.262	45673810	68951049	524.000	508.648
18) L4 AR-1242-3	5.182	4.445	27118831	36636322	523.452	519.309
19) L4 AR-1242-4	5.287	4.536	22944195	35822431	462.005	520.782
20) L4 AR-1242-5	6.083	5.090	23544093	46916094	515.790	526.278

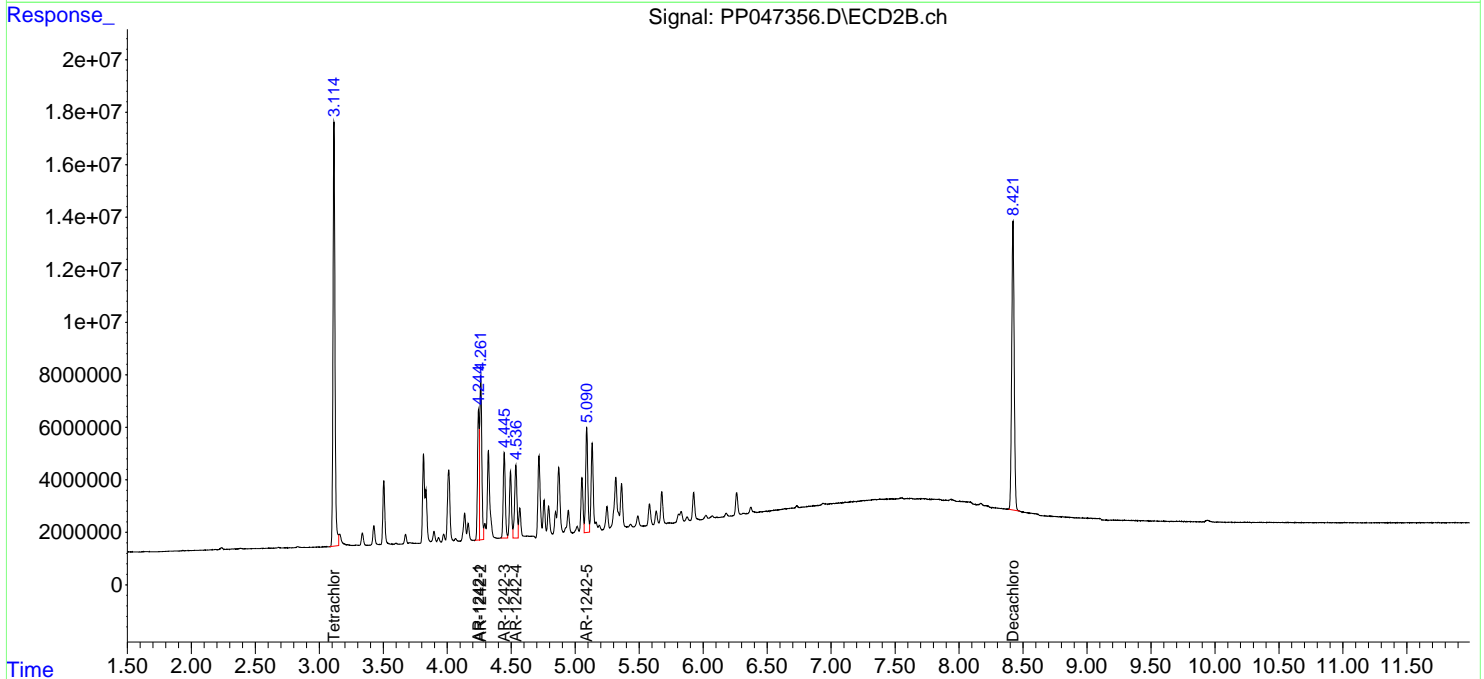
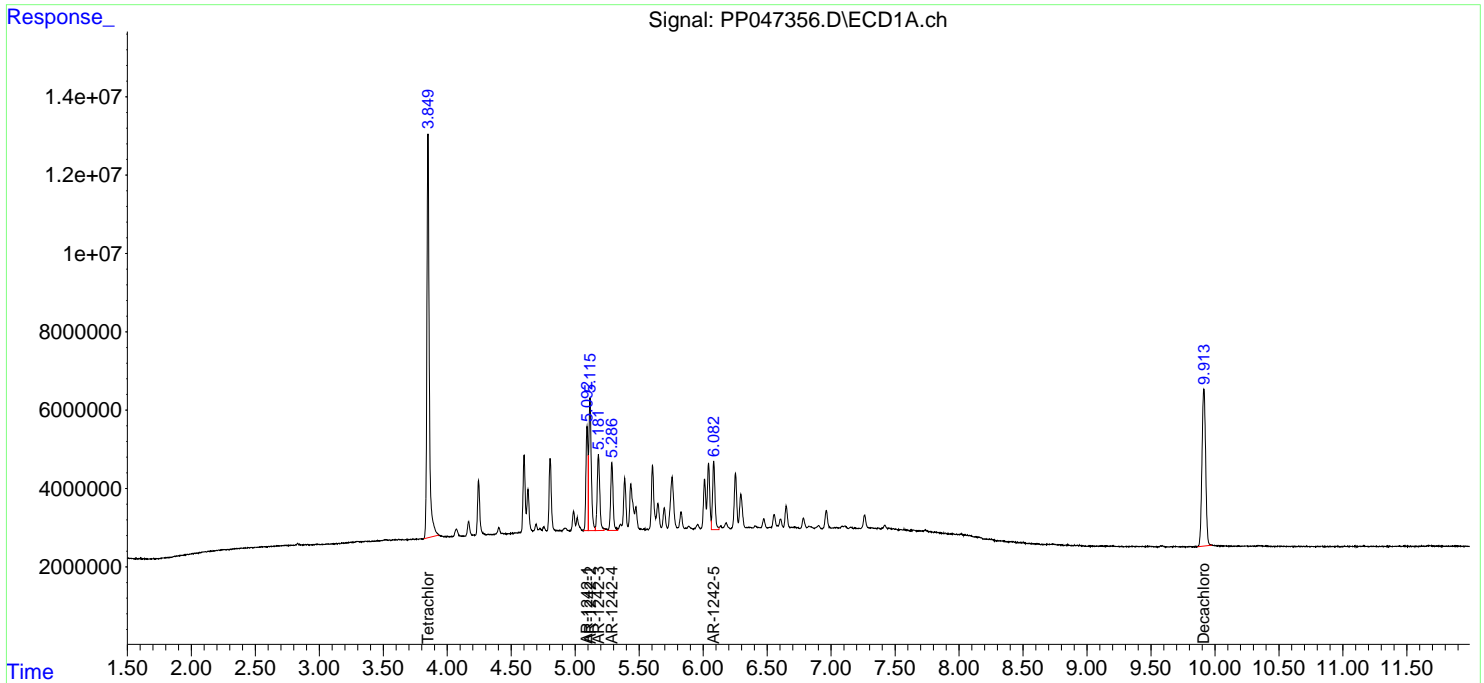
(f)=RT Delta > 1/2 Window (#)=Amounts differ by > 25% (m)=manual int.

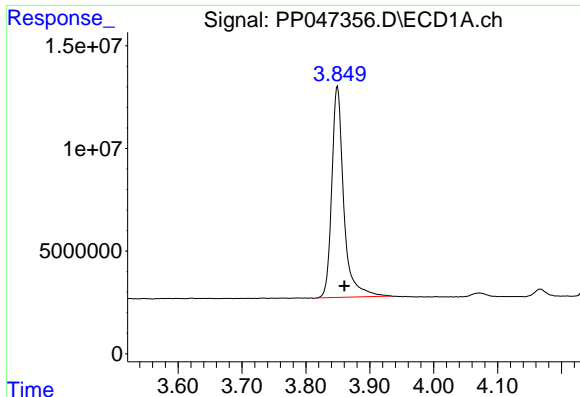
Data Path : Z:\pestpcbsrv\HPCHEM1\ECD_P\Data\PP051022\
 Data File : PP047356.D
 Signal(s) : Signal #1: ECD1A.ch Signal #2: ECD2B.ch
 Acq On : 10 May 2022 19:55
 Operator : YP\AJ
 Sample : AR1242CCC500
 Misc :
 ALS Vial : 12 Sample Multiplier: 1

Instrument :
 ECD_P
 ClientSampleId :
 AR1242CCC500

Integration File signal 1: autoint1.e
 Integration File signal 2: autoint2.e
 Quant Time: May 10 20:28:06 2022
 Quant Method : Z:\pestpcbsrv\HPCHEM1\ECD_P\methods\PP051022.M
 Quant Title : GC EXTRACTABLES
 QLast Update : Tue May 10 18:34:51 2022
 Response via : Initial Calibration
 Integrator: ChemStation

Volume Inj. : 2 µl
 Signal #1 Phase : ZB-MR1 Signal #2 Phase: ZB-MR2
 Signal #1 Info : 30Mx0.32mmx 0.50µ Signal #2 Info : 30M x 0.32mm x 0.25µm

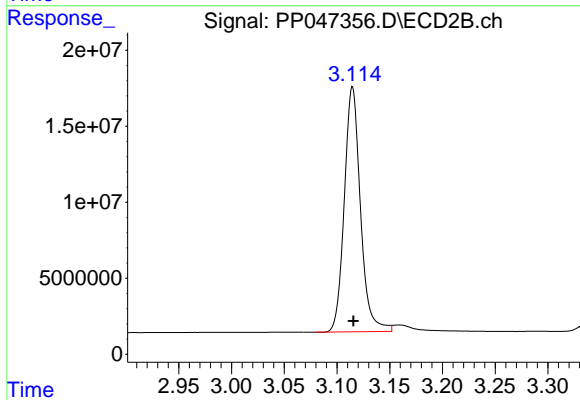




#1 Tetrachloro-m-xylene

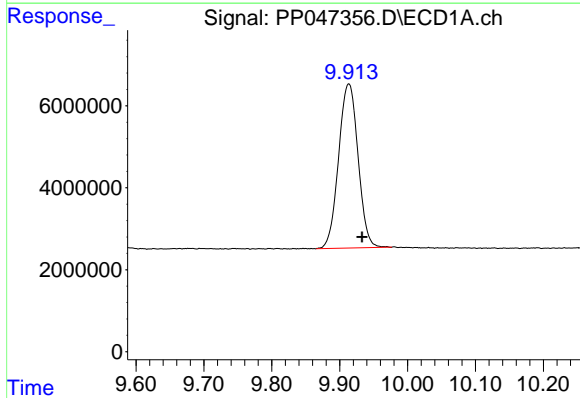
R.T.: 3.849 min
 Delta R.T.: -0.011 min
 Response: 133909830
 Conc: 52.67 ng/ml

Instrument :
 ECD_P
 ClientSampleId :
 AR1242CCC500



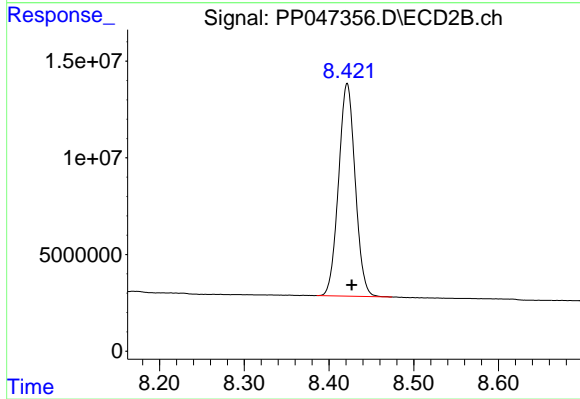
#1 Tetrachloro-m-xylene

R.T.: 3.115 min
 Delta R.T.: -0.001 min
 Response: 172008480
 Conc: 52.24 ng/ml



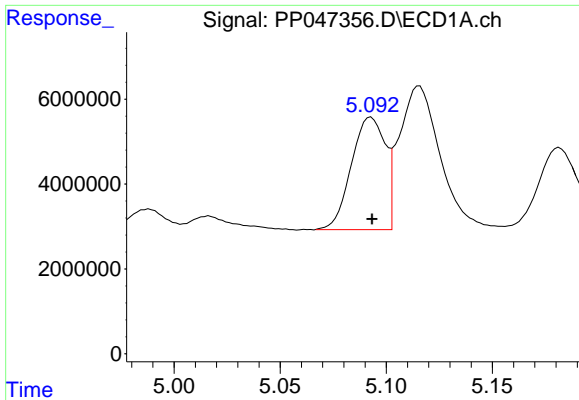
#2 Decachlorobiphenyl

R.T.: 9.914 min
 Delta R.T.: -0.019 min
 Response: 79675069
 Conc: 55.69 ng/ml



#2 Decachlorobiphenyl

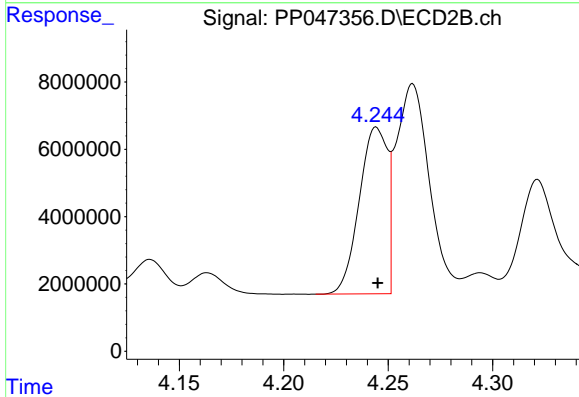
R.T.: 8.421 min
 Delta R.T.: -0.005 min
 Response: 149691654
 Conc: 54.99 ng/ml



#16 AR-1242-1

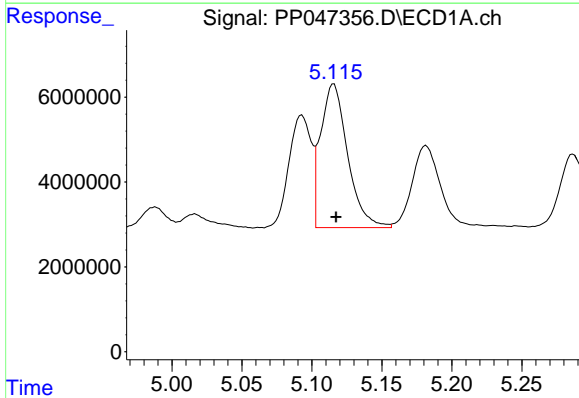
R.T.: 5.093 min
 Delta R.T.: 0.000 min
 Response: 29375492
 Conc: 510.15 ng/ml

Instrument :
 ECD_P
 ClientSampleId :
 AR1242CCC500



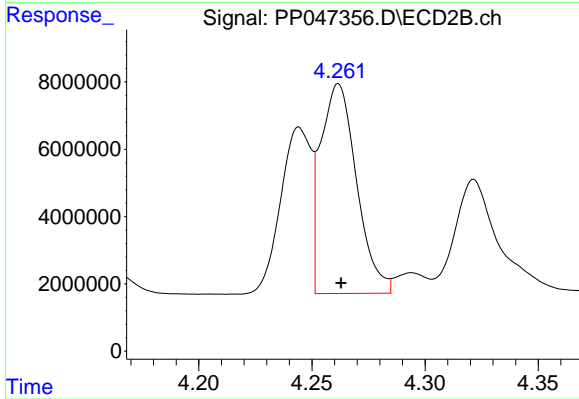
#16 AR-1242-1

R.T.: 4.244 min
 Delta R.T.: 0.000 min
 Response: 46362827
 Conc: 507.49 ng/ml



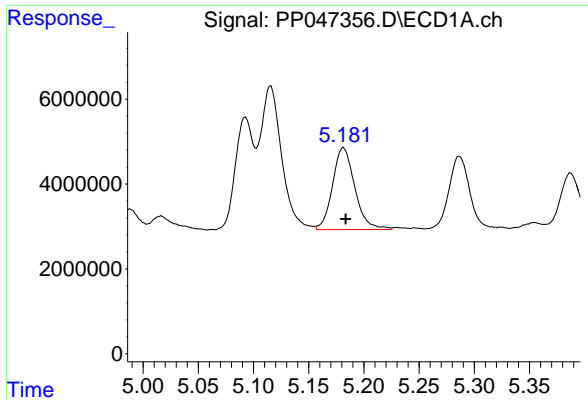
#17 AR-1242-2

R.T.: 5.116 min
 Delta R.T.: -0.002 min
 Response: 45673810
 Conc: 524.00 ng/ml



#17 AR-1242-2

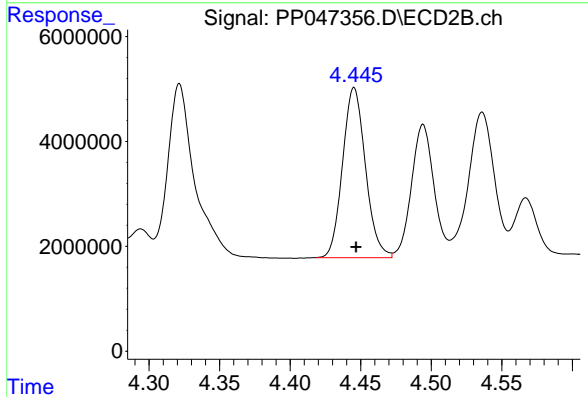
R.T.: 4.262 min
 Delta R.T.: -0.001 min
 Response: 68951049
 Conc: 508.65 ng/ml



#18 AR-1242-3

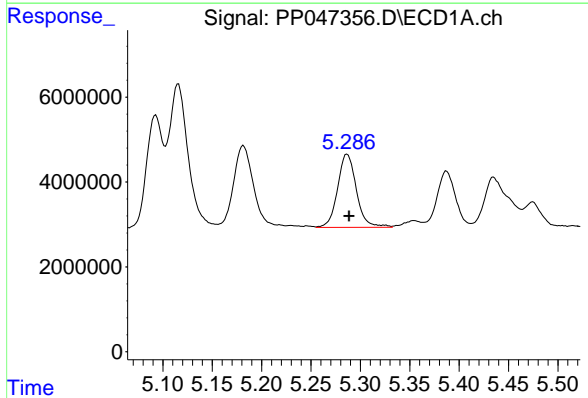
R.T.: 5.182 min
 Delta R.T.: -0.002 min
 Response: 27118831
 Conc: 523.45 ng/ml

Instrument :
 ECD_P
 ClientSampleId :
 AR1242CCC500



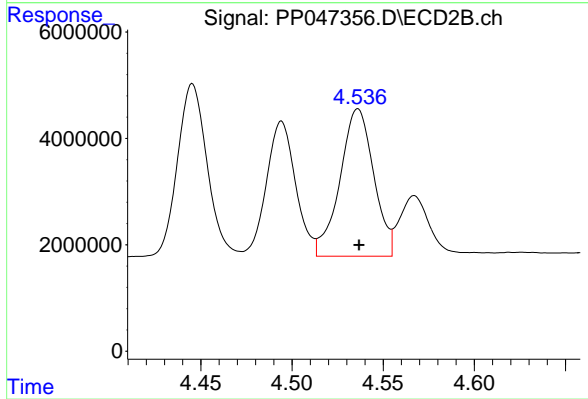
#18 AR-1242-3

R.T.: 4.445 min
 Delta R.T.: -0.001 min
 Response: 36636322
 Conc: 519.31 ng/ml



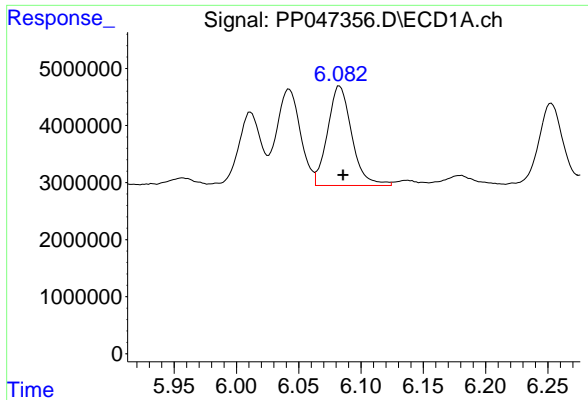
#19 AR-1242-4

R.T.: 5.287 min
 Delta R.T.: -0.002 min
 Response: 22944195
 Conc: 462.01 ng/ml



#19 AR-1242-4

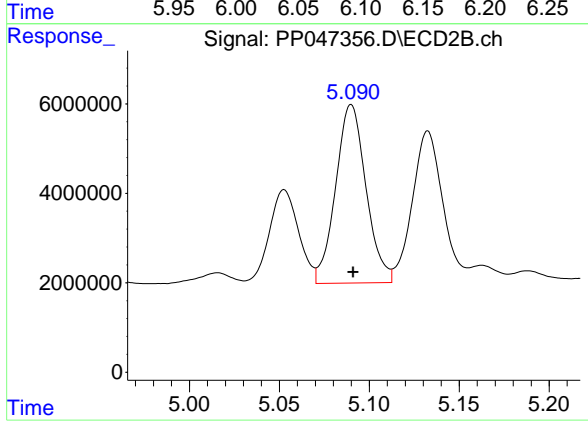
R.T.: 4.536 min
 Delta R.T.: 0.000 min
 Response: 35822431
 Conc: 520.78 ng/ml



#20 AR-1242-5

R.T.: 6.083 min
Delta R.T.: -0.003 min
Response: 23544093
Conc: 515.79 ng/ml

Instrument :
ECD_P
ClientSampleId :
AR1242CCC500



#20 AR-1242-5

R.T.: 5.090 min
Delta R.T.: -0.001 min
Response: 46916094
Conc: 526.28 ng/ml