

Data Path : Z:\pestpcbsrv\HPCHEM1\ECD_P\Data\PP051022\
 Data File : PP047378.D
 Signal(s) : Signal #1: ECD1A.ch Signal #2: ECD2B.ch
 Acq On : 11 May 2022 03:01
 Operator : YP\AJ
 Sample : N2743-04 10X
 Misc :
 ALS Vial : 45 Sample Multiplier: 1

Instrument :
 ECD_P
ClientSampleId :
 SOM-2022-29A

Manual Integrations
APPROVED

Reviewed By :Yogesh Patel 05/11/2022
 Supervised By :mohammad ahmed 05/11/2022

Integration File signal 1: autoint1.e
 Integration File signal 2: autoint2.e
 Quant Time: May 11 06:48:34 2022
 Quant Method : Z:\pestpcbsrv\HPCHEM1\ECD_P\methods\PP051022.M
 Quant Title : GC EXTRACTABLES
 QLast Update : Tue May 10 18:34:51 2022
 Response via : Initial Calibration
 Integrator: ChemStation

Volume Inj. : 2 µl
 Signal #1 Phase : ZB-MR1 Signal #2 Phase: ZB-MR2
 Signal #1 Info : 30Mx0.32mmx 0.50µ Signal #2 Info : 30M x 0.32mm x 0.25µm

Compound	RT#1	RT#2	Resp#1	Resp#2	ng/ml	ng/ml

System Monitoring Compounds						
1) SA Tetrachlo...	3.849	3.115	3878296	7231206	1.525m	2.196 #
2) SA Decachlor...	9.913	8.422	3734773	5678068	2.611	2.086

Target Compounds

(f)=RT Delta > 1/2 Window (#)=Amounts differ by > 25% (m)=manual int.

Data Path : Z:\pestpcbsrv\HPCHEM1\ECD_P\Data\PP051022\
 Data File : PP047378.D
 Signal(s) : Signal #1: ECD1A.ch Signal #2: ECD2B.ch
 Acq On : 11 May 2022 03:01
 Operator : YP\AJ
 Sample : N2743-04 10X
 Misc :
 ALS Vial : 45 Sample Multiplier: 1

Instrument :

ECD_P

ClientSampleId :

SOM-2022-29A

Manual Integrations

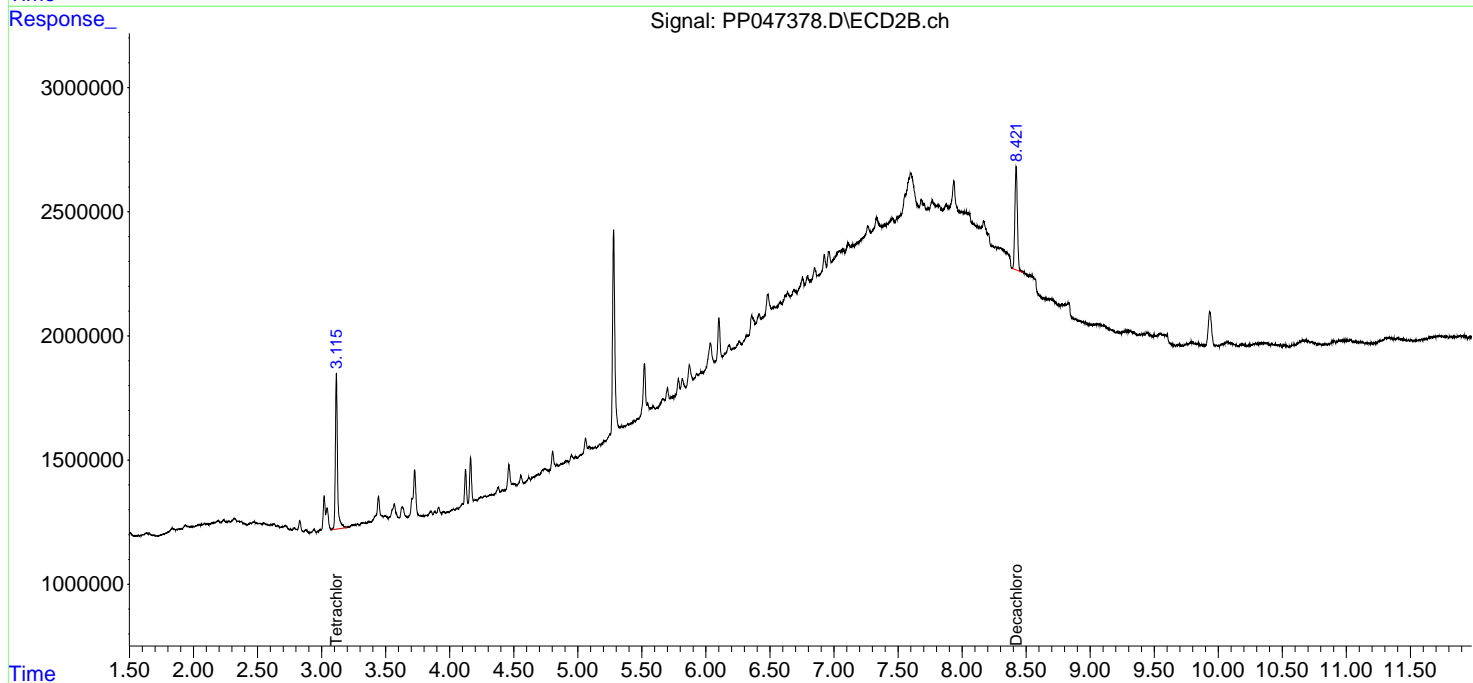
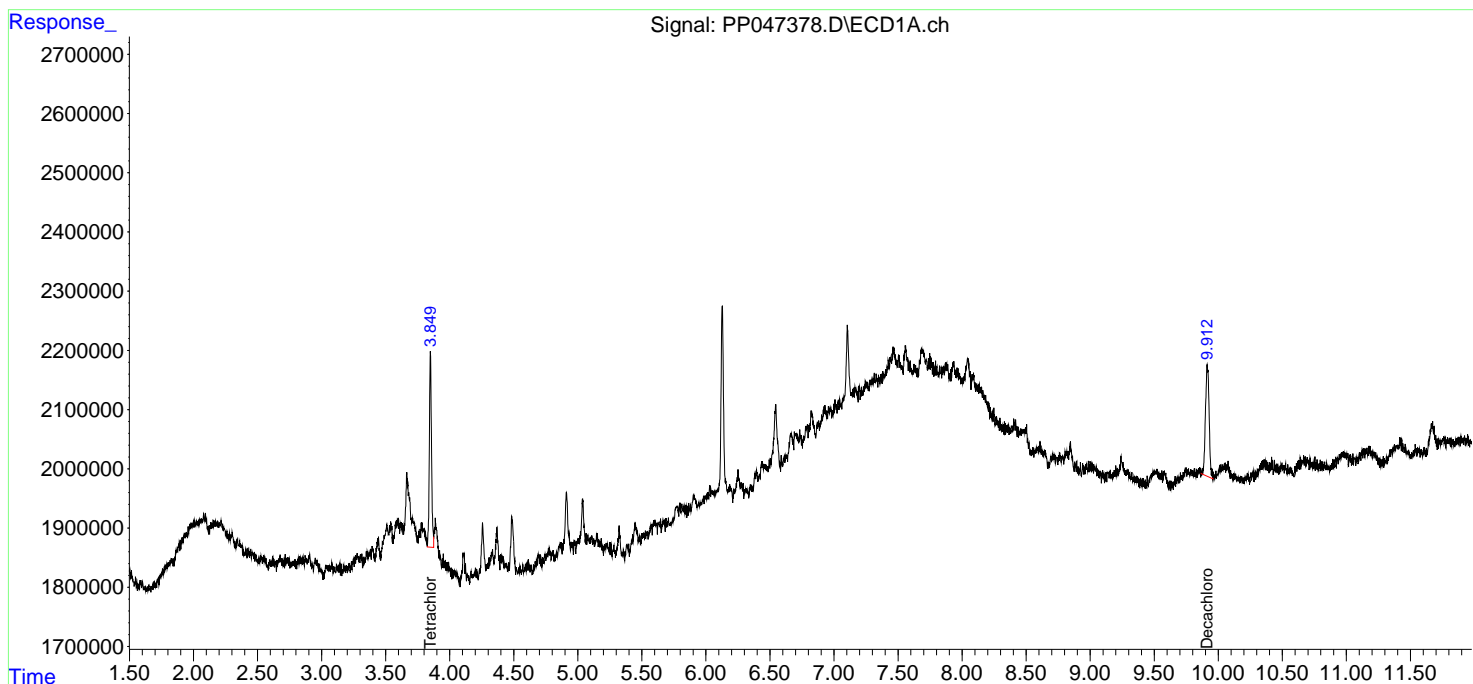
APPROVED

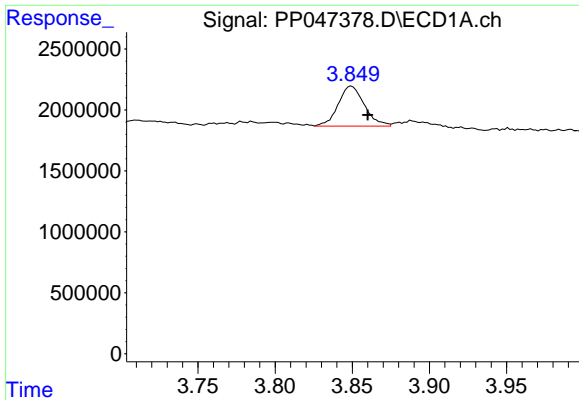
Reviewed By :Yogesh Patel 05/11/2022

Supervised By :mohammad ahmed 05/11/2022

Integration File signal 1: autoint1.e
 Integration File signal 2: autoint2.e
 Quant Time: May 11 06:48:34 2022
 Quant Method : Z:\pestpcbsrv\HPCHEM1\ECD_P\methods\PP051022.M
 Quant Title : GC EXTRACTABLES
 QLast Update : Tue May 10 18:34:51 2022
 Response via : Initial Calibration
 Integrator: ChemStation

Volume Inj. : 2 µl
 Signal #1 Phase : ZB-MR1 Signal #2 Phase: ZB-MR2
 Signal #1 Info : 30Mx0.32mmx 0.50µ Signal #2 Info : 30M x 0.32mm x 0.25µm



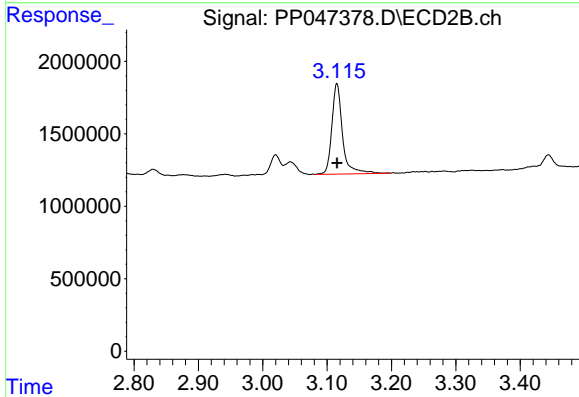


#1 Tetrachloro-m-xylene
 R.T.: 3.849 min
 Delta R.T.: -0.011 min
 Response: 3878296
 Conc: 1.53 ng/ml

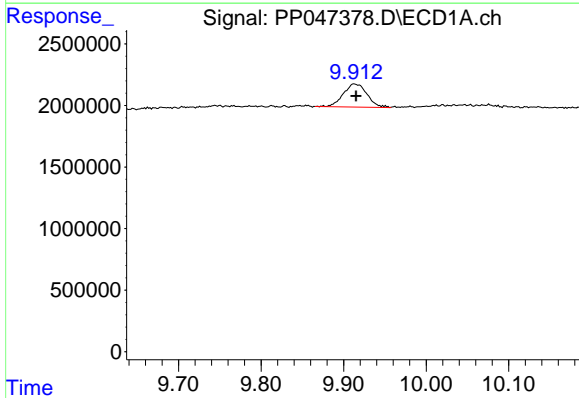
Instrument :
 ECD_P
 ClientSampleId :
 SOM-2022-29A

Manual Integrations
 APPROVED

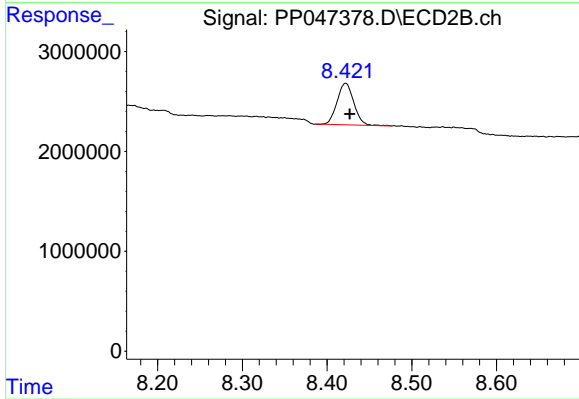
Reviewed By :Yogesh Patel 05/11/2022
 Supervised By :mohammad ahmed 05/11/2022



#1 Tetrachloro-m-xylene
 R.T.: 3.115 min
 Delta R.T.: 0.000 min
 Response: 7231206
 Conc: 2.20 ng/ml



#2 Decachlorobiphenyl
 R.T.: 9.913 min
 Delta R.T.: -0.002 min
 Response: 3734773
 Conc: 2.61 ng/ml



#2 Decachlorobiphenyl
 R.T.: 8.422 min
 Delta R.T.: -0.005 min
 Response: 5678068
 Conc: 2.09 ng/ml