

Data Path : Z:\pestpcbsrv\HPCHEM1\ECD_P\Data\PP051022\
 Data File : PP047393.D
 Signal(s) : Signal #1: ECD1A.ch Signal #2: ECD2B.ch
 Acq On : 11 May 2022 07:20
 Operator : YP\AJ
 Sample : PB144684BS
 Misc :
 ALS Vial : 56 Sample Multiplier: 1

Instrument :
 ECD_P
ClientSampleId :
 PB144684BS

Manual Integrations
APPROVED

Reviewed By :Yogesh Patel 05/12/2022
 Supervised By :mohammad ahmed 05/12/2022

Integration File signal 1: autoint1.e
 Integration File signal 2: autoint2.e
 Quant Time: May 11 09:10:50 2022
 Quant Method : Z:\pestpcbsrv\HPCHEM1\ECD_P\methods\PP051022.M
 Quant Title : GC EXTRACTABLES
 QLast Update : Tue May 10 18:34:51 2022
 Response via : Initial Calibration
 Integrator: ChemStation

Volume Inj. : 2 µl
 Signal #1 Phase : ZB-MR1 Signal #2 Phase: ZB-MR2
 Signal #1 Info : 30Mx0.32mmx 0.50µ Signal #2 Info : 30M x 0.32mm x 0.25µm

Compound	RT#1	RT#2	Resp#1	Resp#2	ng/ml	ng/ml

System Monitoring Compounds						
1) SA Tetrachlo...	3.851	3.115	51100521	64851437	20.100	19.696
2) SA Decachlor...	9.916	8.422	31806161	56155542	22.233	20.631
Target Compounds						
3) L1 AR-1016-1	5.094	4.244	32186662	51259874	436.890m	439.310
4) L1 AR-1016-2	5.117	4.262	50984524	75863354	456.684m	437.661
5) L1 AR-1016-3	5.184	4.445	29384095	40466677	428.414	447.271
6) L1 AR-1016-4	5.289	4.494	24200157	31973457	414.232	437.868
7) L1 AR-1016-5	5.607	4.716	22292594	40289809	408.449	428.784
31) L7 AR-1260-1	6.830	5.816	43060008	79266537	476.003	465.303
32) L7 AR-1260-2	7.112	6.023	54526454	112.8E6	469.655	464.914
33) L7 AR-1260-3	7.506	6.182	38839107	90984573	376.844	455.280
34) L7 AR-1260-4	7.753	6.691	39851522	68386809	412.406	387.038
35) L7 AR-1260-5	8.093	6.960	76737230	184.0E6	428.980	391.115

(f)=RT Delta > 1/2 Window (#)=Amounts differ by > 25% (m)=manual int.

Data Path : Z:\pestpcbsrv\HPCHEM1\ECD_P\Data\PP051022\
 Data File : PP047393.D
 Signal(s) : Signal #1: ECD1A.ch Signal #2: ECD2B.ch
 Acq On : 11 May 2022 07:20
 Operator : YP\AJ
 Sample : PB144684BS
 Misc :
 ALS Vial : 56 Sample Multiplier: 1

Instrument :

ECD_P

ClientSampleId :

PB144684BS

Manual Integrations

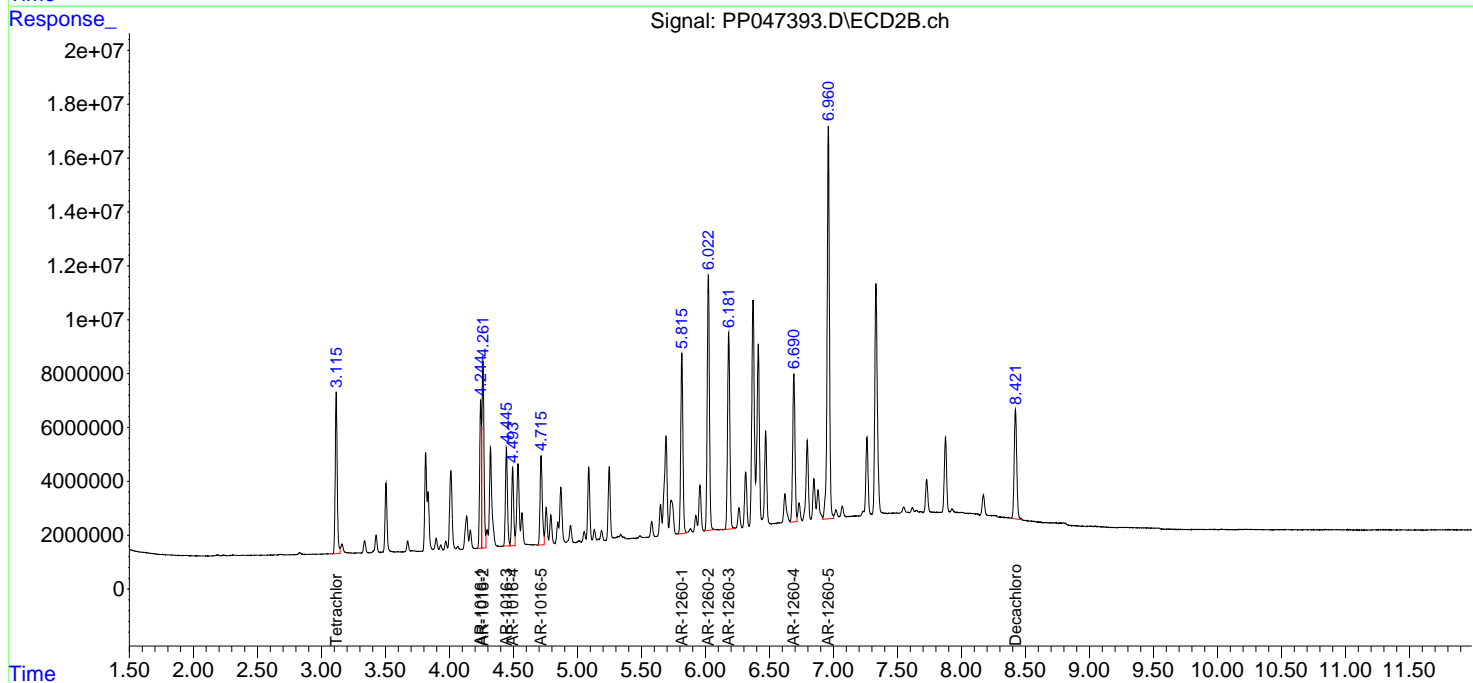
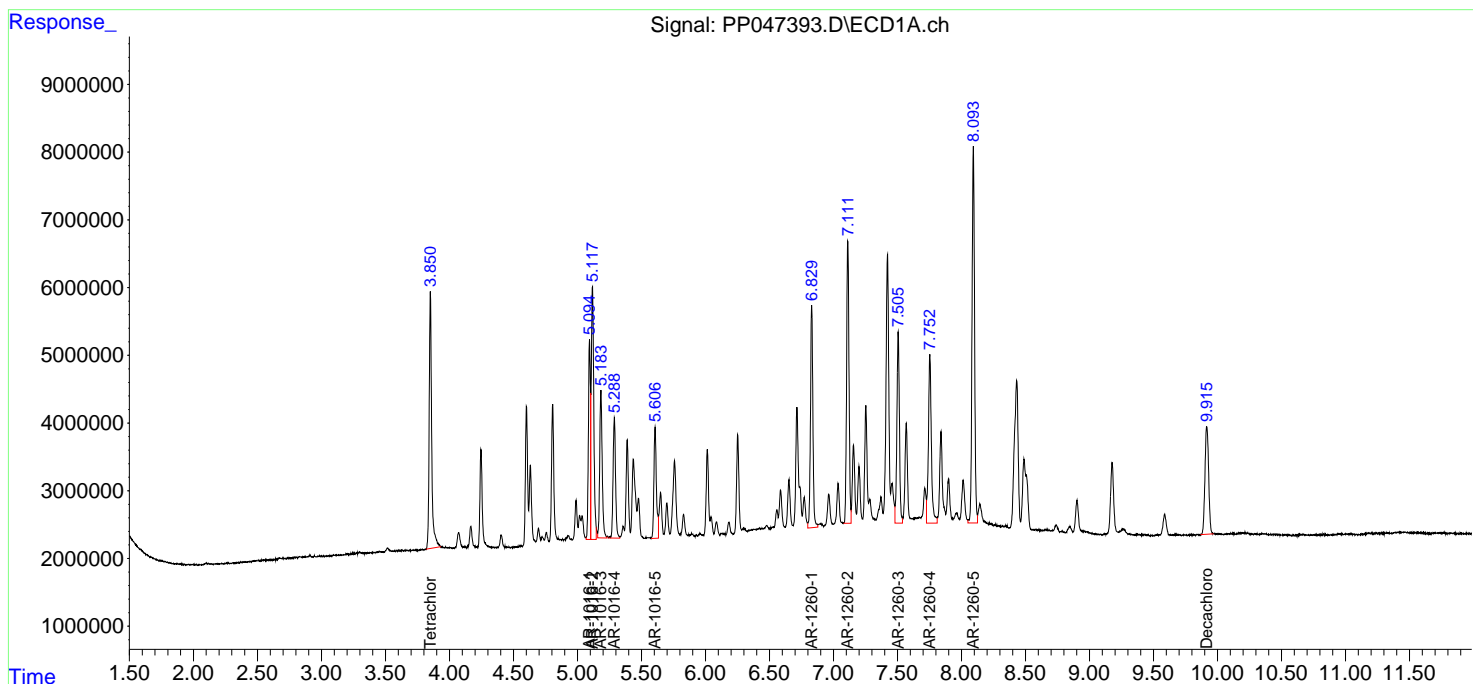
APPROVED

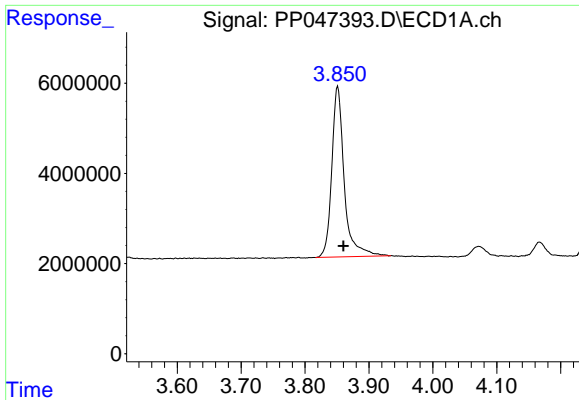
Reviewed By :Yogesh Patel 05/12/2022

Supervised By :mohammad ahmed 05/12/2022

Integration File signal 1: autoint1.e
 Integration File signal 2: autoint2.e
 Quant Time: May 11 09:10:50 2022
 Quant Method : Z:\pestpcbsrv\HPCHEM1\ECD_P\methods\PP051022.M
 Quant Title : GC EXTRACTABLES
 QLast Update : Tue May 10 18:34:51 2022
 Response via : Initial Calibration
 Integrator: ChemStation

Volume Inj. : 2 µl
 Signal #1 Phase : ZB-MR1 Signal #2 Phase: ZB-MR2
 Signal #1 Info : 30Mx0.32mmx 0.50µ Signal #2 Info : 30M x 0.32mm x 0.25µm



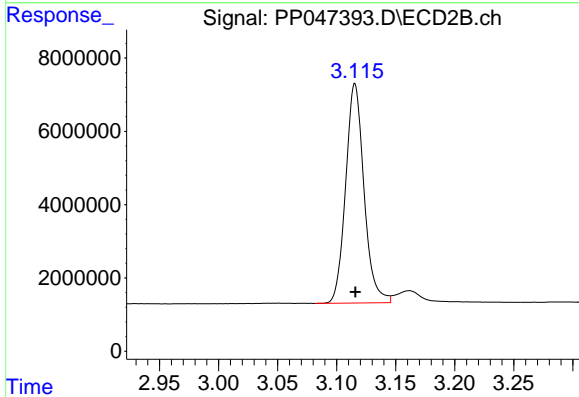


#1 Tetrachloro-m-xylene
 R.T.: 3.851 min
 Delta R.T.: -0.009 min
 Response: 51100521
 Conc: 20.10 ng/ml

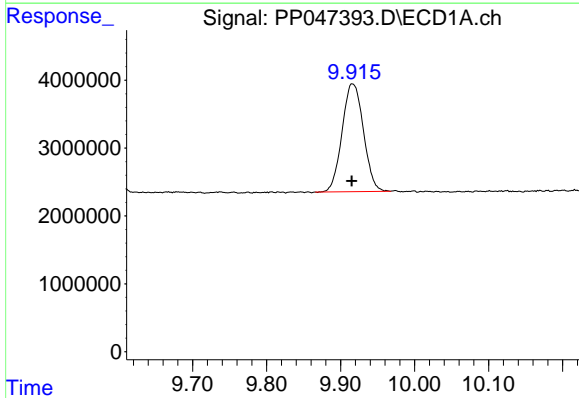
Instrument :
 ECD_P
 ClientSampleId :
 PB144684BS

Manual Integrations
 APPROVED

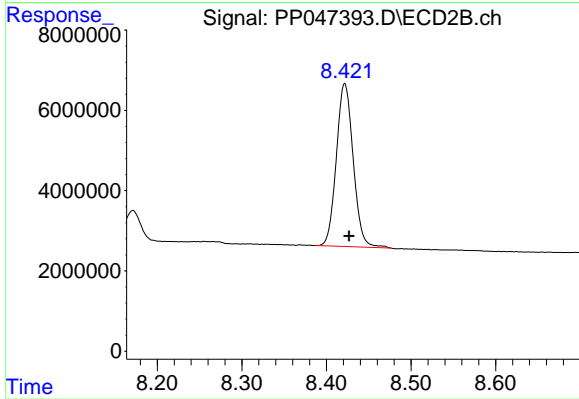
Reviewed By :Yogesh Patel 05/12/2022
 Supervised By :mohammad ahmed 05/12/2022



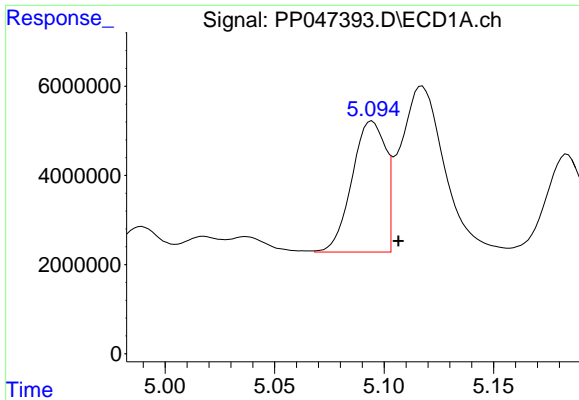
#1 Tetrachloro-m-xylene
 R.T.: 3.115 min
 Delta R.T.: 0.000 min
 Response: 64851437
 Conc: 19.70 ng/ml



#2 Decachlorobiphenyl
 R.T.: 9.916 min
 Delta R.T.: 0.001 min
 Response: 31806161
 Conc: 22.23 ng/ml



#2 Decachlorobiphenyl
 R.T.: 8.422 min
 Delta R.T.: -0.005 min
 Response: 56155542
 Conc: 20.63 ng/ml



#3 AR-1016-1

R.T.: 5.094 min
 Delta R.T.: -0.013 min
 Response: 32186662
 Conc: 436.89 ng/ml

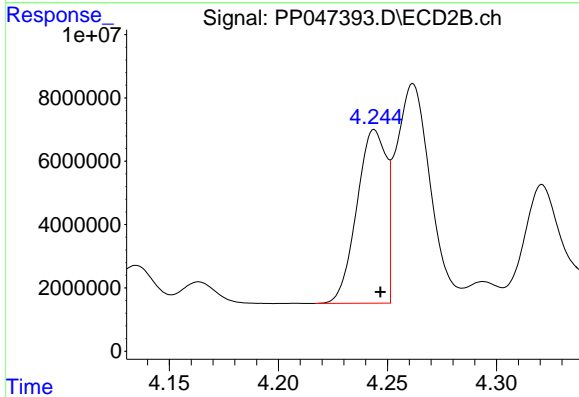
Instrument :

ECD_P

Client Sample Id :
 PB144684BS

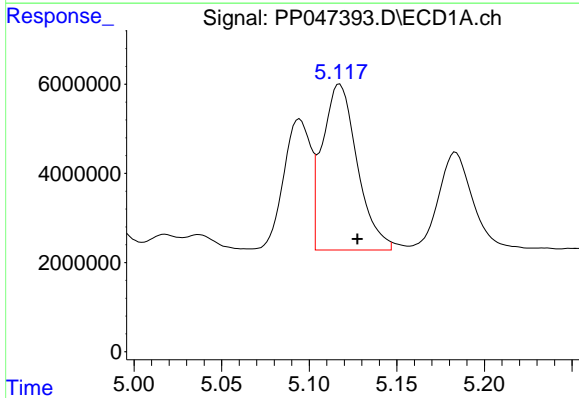
Manual Integrations
 APPROVED

Reviewed By :Yogesh Patel 05/12/2022
 Supervised By :mohammad ahmed 05/12/2022



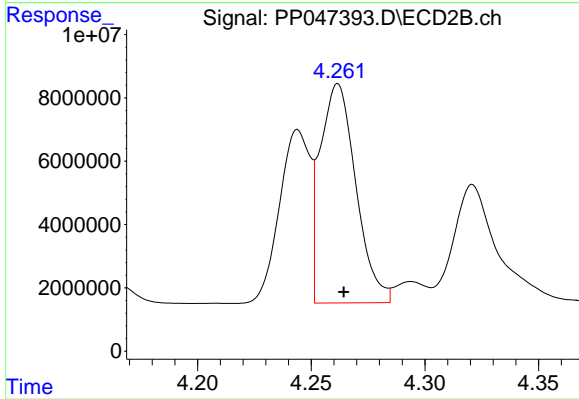
#3 AR-1016-1

R.T.: 4.244 min
 Delta R.T.: -0.003 min
 Response: 51259874
 Conc: 439.31 ng/ml



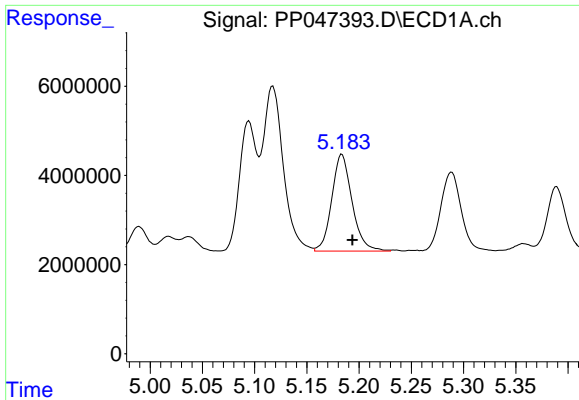
#4 AR-1016-2

R.T.: 5.117 min
 Delta R.T.: -0.011 min
 Response: 50984524
 Conc: 456.68 ng/ml m



#4 AR-1016-2

R.T.: 4.262 min
 Delta R.T.: -0.003 min
 Response: 75863354
 Conc: 437.66 ng/ml



#5 AR-1016-3

R.T.: 5.184 min
 Delta R.T.: -0.010 min
 Response: 29384095
 Conc: 428.41 ng/ml

Instrument :

ECD_P

Client Sample Id :

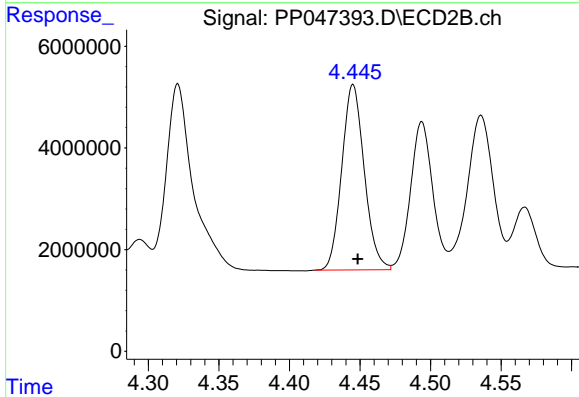
PB144684BS

Manual Integrations

APPROVED

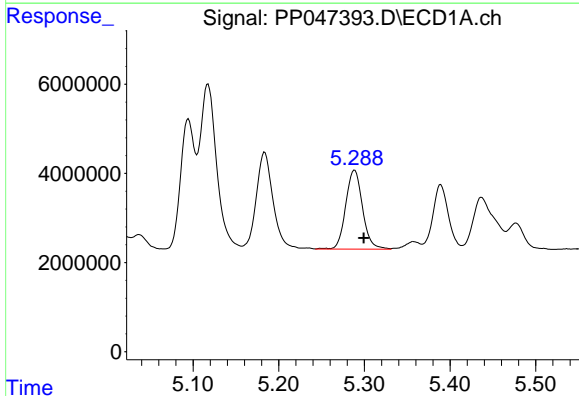
Reviewed By :Yogesh Patel 05/12/2022

Supervised By :mohammad ahmed 05/12/2022



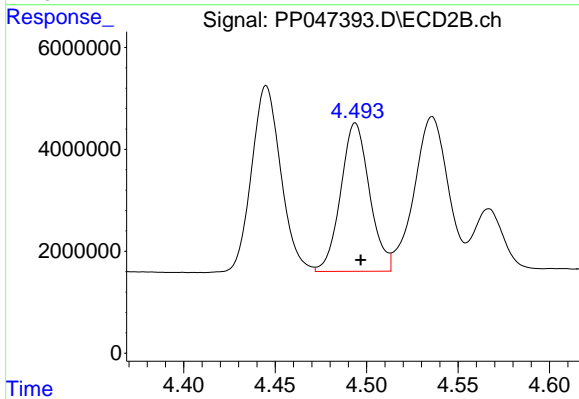
#5 AR-1016-3

R.T.: 4.445 min
 Delta R.T.: -0.003 min
 Response: 40466677
 Conc: 447.27 ng/ml



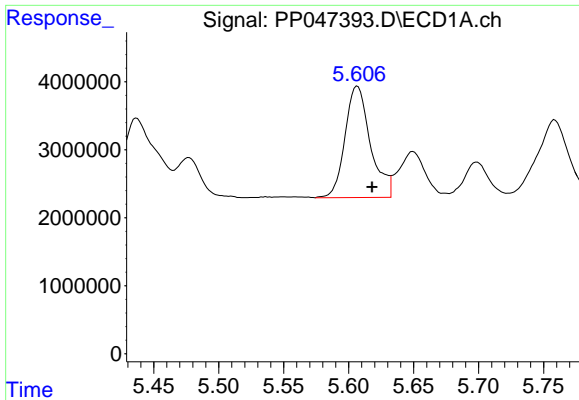
#6 AR-1016-4

R.T.: 5.289 min
 Delta R.T.: -0.010 min
 Response: 24200157
 Conc: 414.23 ng/ml



#6 AR-1016-4

R.T.: 4.494 min
 Delta R.T.: -0.003 min
 Response: 31973457
 Conc: 437.87 ng/ml



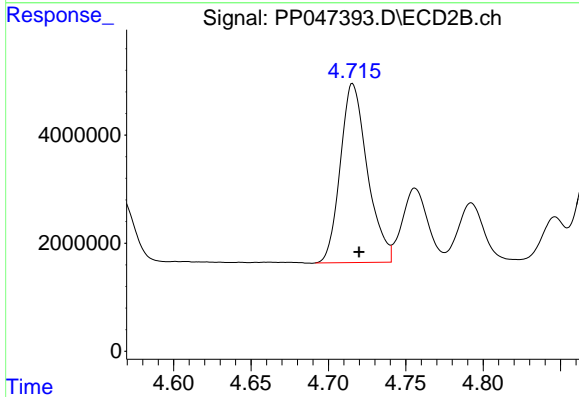
#7 AR-1016-5

R.T.: 5.607 min
 Delta R.T.: -0.011 min
 Response: 22292594
 Conc: 408.45 ng/ml

Instrument :
 ECD_P
 ClientSampleId :
 PB144684BS

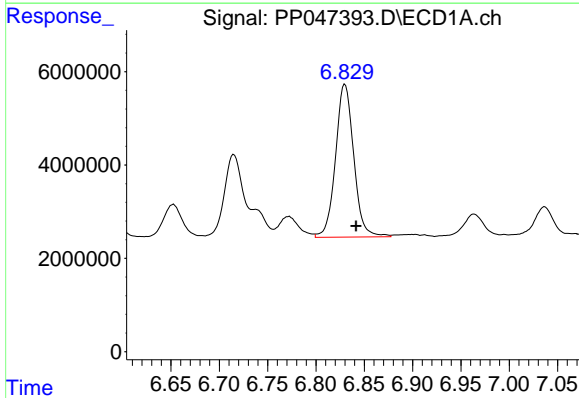
Manual Integrations
 APPROVED

Reviewed By :Yogesh Patel 05/12/2022
 Supervised By :mohammad ahmed 05/12/2022



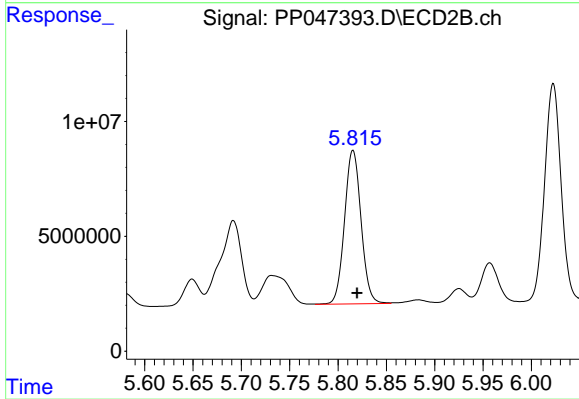
#7 AR-1016-5

R.T.: 4.716 min
 Delta R.T.: -0.004 min
 Response: 40289809
 Conc: 428.78 ng/ml



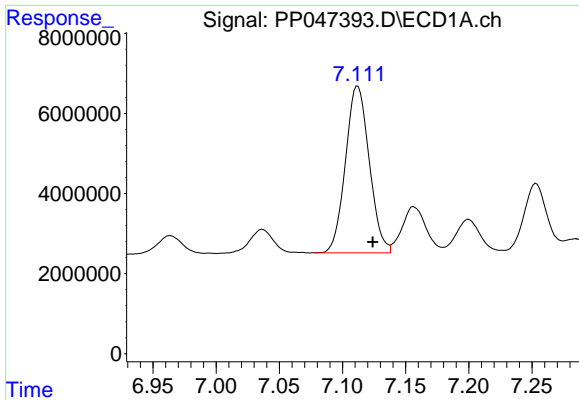
#31 AR-1260-1

R.T.: 6.830 min
 Delta R.T.: -0.012 min
 Response: 43060008
 Conc: 476.00 ng/ml



#31 AR-1260-1

R.T.: 5.816 min
 Delta R.T.: -0.004 min
 Response: 79266537
 Conc: 465.30 ng/ml



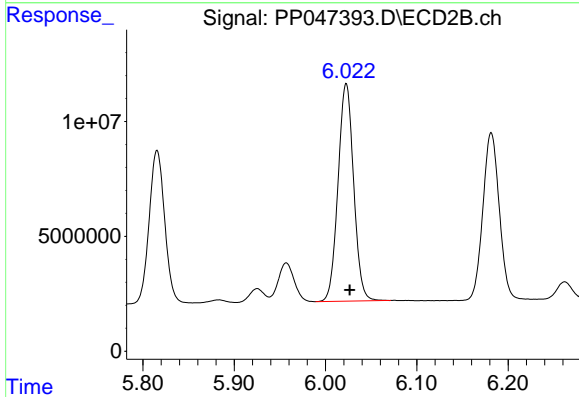
#32 AR-1260-2

R.T.: 7.112 min
 Delta R.T.: -0.012 min
 Response: 54526454
 Conc: 469.66 ng/ml

Instrument :
 ECD_P
 ClientSampleId :
 PB144684BS

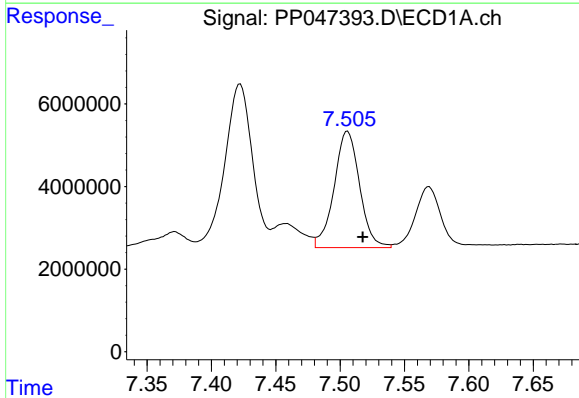
Manual Integrations
 APPROVED

Reviewed By :Yogesh Patel 05/12/2022
 Supervised By :mohammad ahmed 05/12/2022



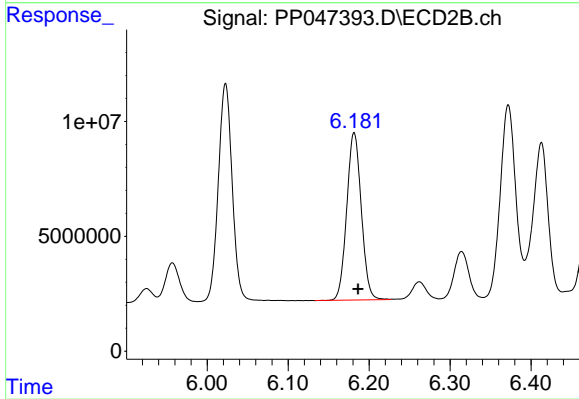
#32 AR-1260-2

R.T.: 6.023 min
 Delta R.T.: -0.004 min
 Response: 112767338
 Conc: 464.91 ng/ml



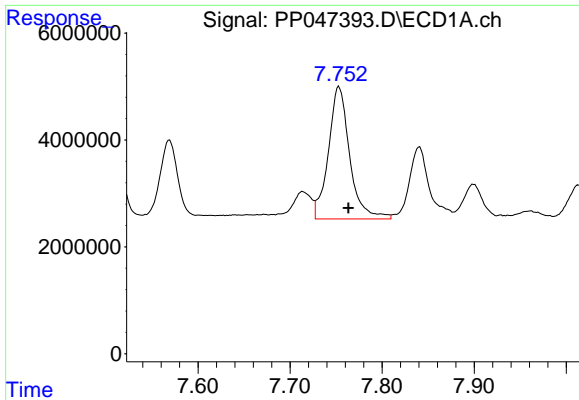
#33 AR-1260-3

R.T.: 7.506 min
 Delta R.T.: -0.012 min
 Response: 38839107
 Conc: 376.84 ng/ml



#33 AR-1260-3

R.T.: 6.182 min
 Delta R.T.: -0.005 min
 Response: 90984573
 Conc: 455.28 ng/ml



#34 AR-1260-4

R.T.: 7.753 min
 Delta R.T.: -0.010 min
 Response: 39851522
 Conc: 412.41 ng/ml

Instrument :

ECD_P

ClientSampleId :

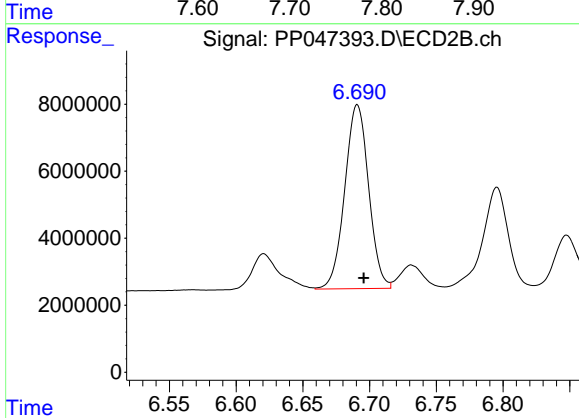
PB144684BS

Manual Integrations

APPROVED

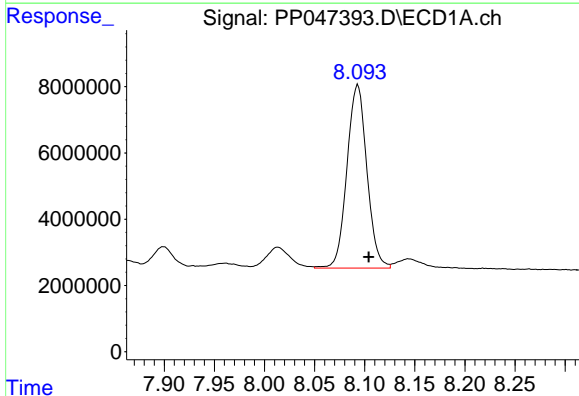
Reviewed By :Yogesh Patel 05/12/2022

Supervised By :mohammad ahmed 05/12/2022



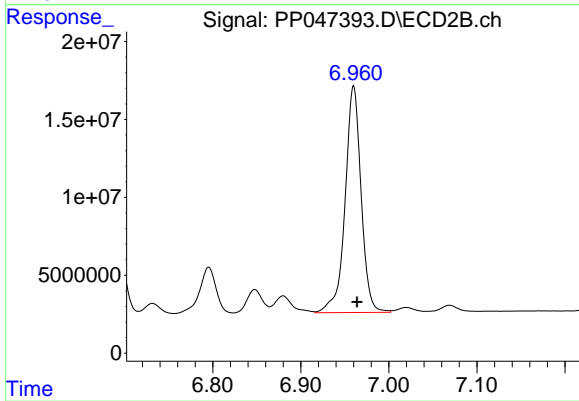
#34 AR-1260-4

R.T.: 6.691 min
 Delta R.T.: -0.005 min
 Response: 68386809
 Conc: 387.04 ng/ml



#35 AR-1260-5

R.T.: 8.093 min
 Delta R.T.: -0.011 min
 Response: 76737230
 Conc: 428.98 ng/ml



#35 AR-1260-5

R.T.: 6.960 min
 Delta R.T.: -0.004 min
 Response: 183983383
 Conc: 391.12 ng/ml