

Data Path : Z:\pestpcbsrv\HPCHEM1\ECD_P\Data\PP051122\
 Data File : PP047432.D
 Signal(s) : Signal #1: ECD1A.ch Signal #2: ECD2B.ch
 Acq On : 11 May 2022 20:24
 Operator : YP\AJ
 Sample : N2749-13
 Misc :
 ALS Vial : 20 Sample Multiplier: 1

Instrument :
 ECD_P
ClientSampleId :
 TP-5

Manual Integrations
APPROVED

Reviewed By :Yogesh Patel 05/13/2022
 Supervised By :mohammad ahmed 05/13/2022

Integration File signal 1: autoint1.e
 Integration File signal 2: autoint2.e
 Quant Time: May 12 16:35:20 2022
 Quant Method : Z:\pestpcbsrv\HPCHEM1\ECD_P\methods\PP051022.M
 Quant Title : GC EXTRACTABLES
 QLast Update : Wed May 11 13:10:20 2022
 Response via : Initial Calibration
 Integrator: ChemStation

Volume Inj. : 2 µl
 Signal #1 Phase : ZB-MR1 Signal #2 Phase: ZB-MR2
 Signal #1 Info : 30Mx0.32mmx 0.50µ Signal #2 Info : 30M x 0.32mm x 0.25µm

Compound	RT#1	RT#2	Resp#1	Resp#2	ng/ml	ng/ml

System Monitoring Compounds						
1) SA Tetrachlo...	3.850	3.114	50090699	68218198	19.703	20.719
2) SA Decachlor...	9.912	8.419	29252355	51691720	20.448	18.991
Target Compounds						
26) L6 AR-1254-1	6.003	5.087	1043340	2517609	13.337m	13.497
27) L6 AR-1254-2	6.247	5.247	1749590	1742925	14.387m	10.576m#
28) L6 AR-1254-3	6.650	5.675	2634016	5795918	20.077m	22.626m
29) L6 AR-1254-4	6.961	5.921	1856388	2812488	19.496	15.360m
30) L6 AR-1254-5	7.417	6.370	4739004	17766385	48.579m	74.002 #

(f)=RT Delta > 1/2 Window (#)=Amounts differ by > 25% (m)=manual int.

Data Path : Z:\pestpcbsrv\HPCHEM1\ECD_P\Data\PP051122\
 Data File : PP047432.D
 Signal(s) : Signal #1: ECD1A.ch Signal #2: ECD2B.ch
 Acq On : 11 May 2022 20:24
 Operator : YP\AJ
 Sample : N2749-13
 Misc :
 ALS Vial : 20 Sample Multiplier: 1

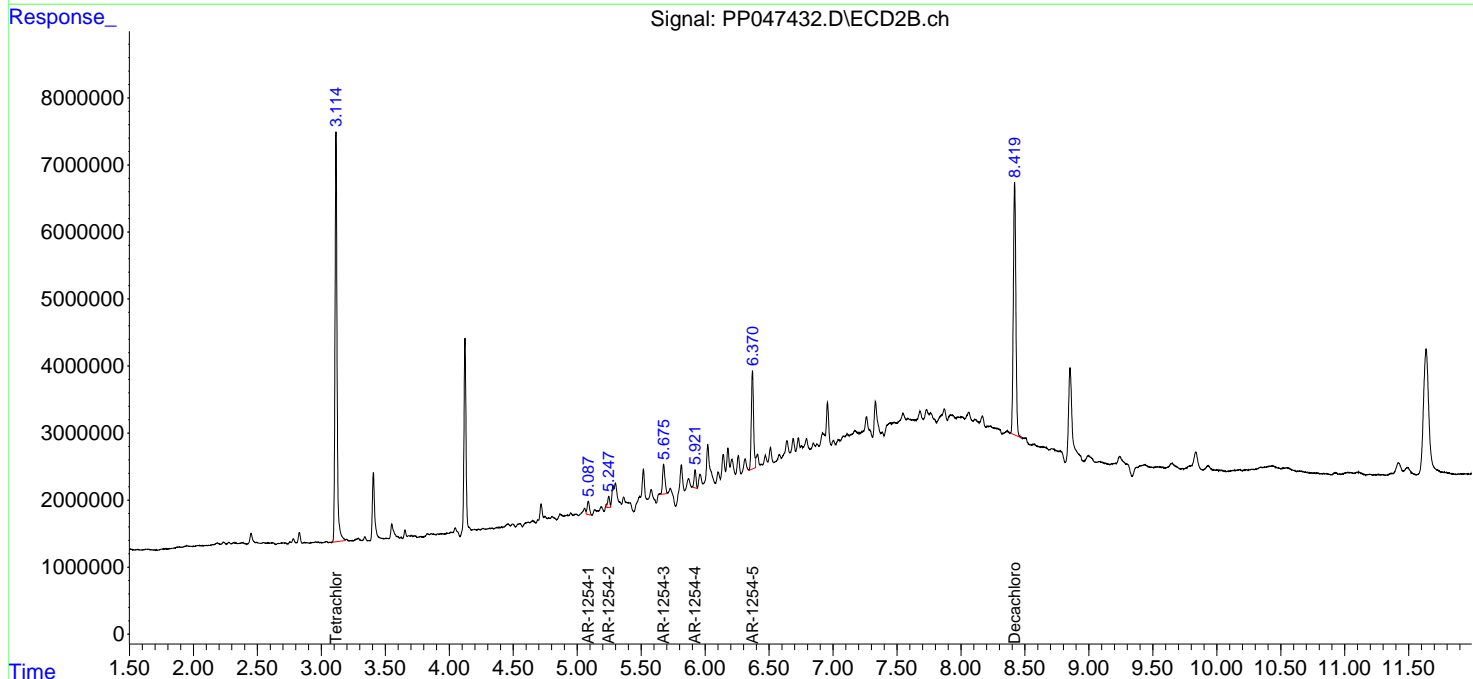
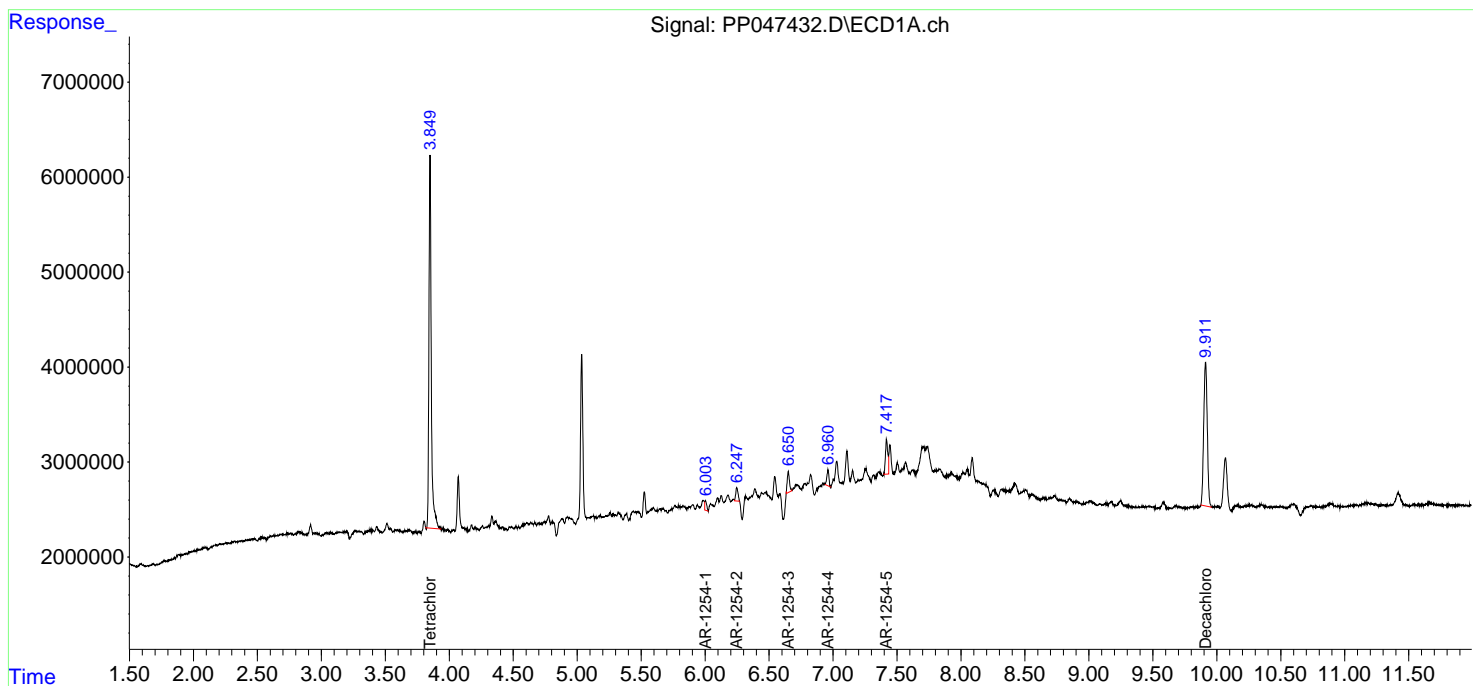
Instrument :
 ECD_P
ClientSampleId :
 TP-5

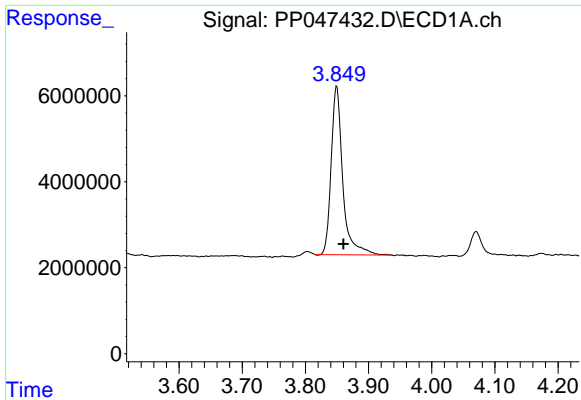
Manual Integrations
APPROVED

Reviewed By :Yogesh Patel 05/13/2022
 Supervised By :mohammad ahmed 05/13/2022

Integration File signal 1: autoint1.e
 Integration File signal 2: autoint2.e
 Quant Time: May 12 16:35:20 2022
 Quant Method : Z:\pestpcbsrv\HPCHEM1\ECD_P\methods\PP051022.M
 Quant Title : GC EXTRACTABLES
 QLast Update : Wed May 11 13:10:20 2022
 Response via : Initial Calibration
 Integrator: ChemStation

Volume Inj. : 2 µl
 Signal #1 Phase : ZB-MR1 Signal #2 Phase: ZB-MR2
 Signal #1 Info : 30Mx0.32mmx 0.50µ Signal #2 Info : 30M x 0.32mm x 0.25µm





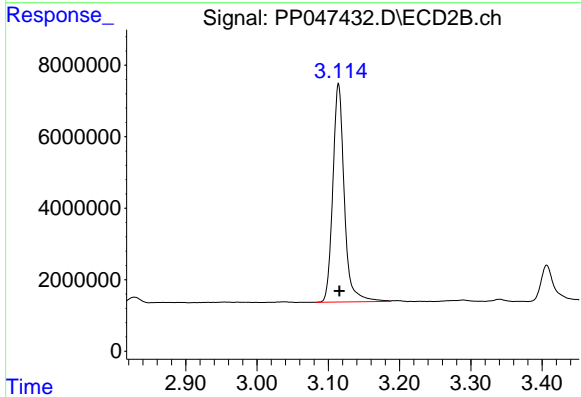
#1 Tetrachloro-m-xylene

R.T.: 3.850 min
 Delta R.T.: -0.010 min
 Response: 50090699
 Conc: 19.70 ng/ml

Instrument :
 ECD_P
 ClientSampleId :
 TP-5

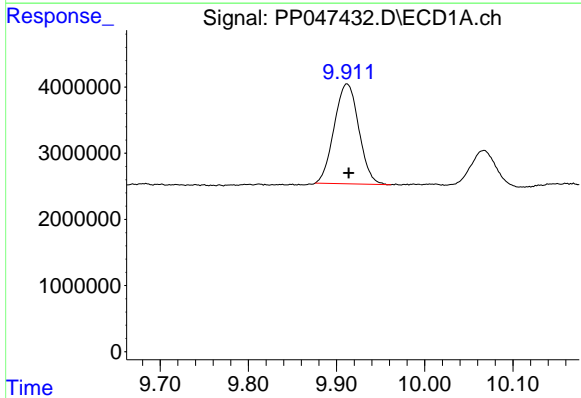
Manual Integrations
 APPROVED

Reviewed By :Yogesh Patel 05/13/2022
 Supervised By :mohammad ahmed 05/13/2022



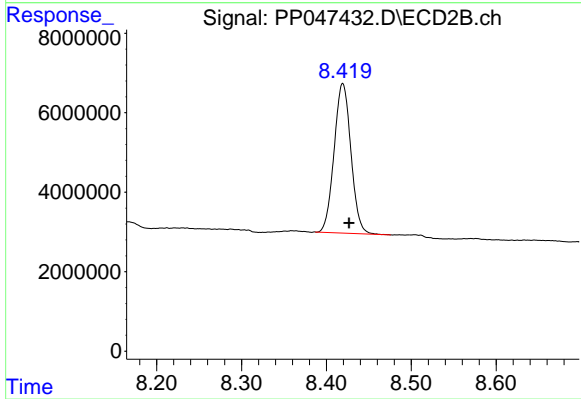
#1 Tetrachloro-m-xylene

R.T.: 3.114 min
 Delta R.T.: -0.001 min
 Response: 68218198
 Conc: 20.72 ng/ml



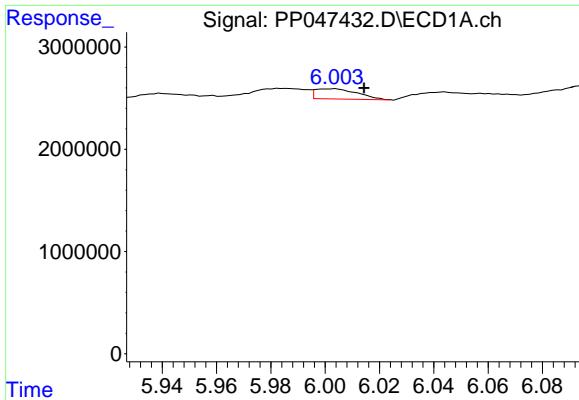
#2 Decachlorobiphenyl

R.T.: 9.912 min
 Delta R.T.: -0.002 min
 Response: 29252355
 Conc: 20.45 ng/ml



#2 Decachlorobiphenyl

R.T.: 8.419 min
 Delta R.T.: -0.008 min
 Response: 51691720
 Conc: 18.99 ng/ml

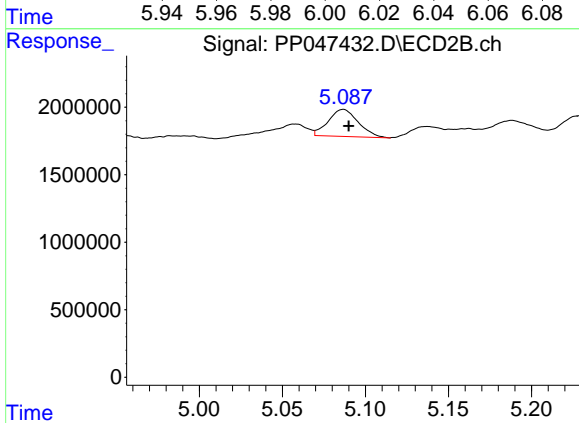


#26 AR-1254-1

R.T.: 6.003 min
 Delta R.T.: -0.011 min
 Response: 1043340
 Conc: 13.34 ng/ml

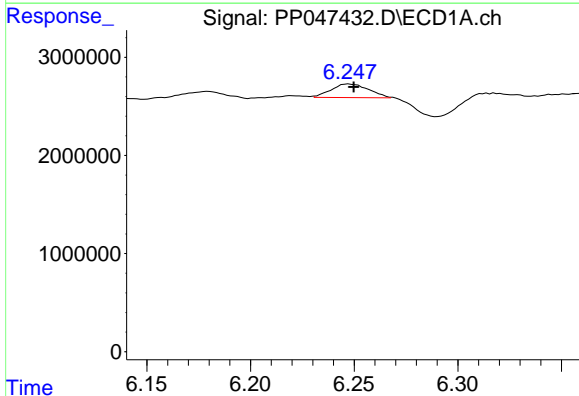
Instrument : ECD_P
 ClientSampleId : TP-5

Manual Integrations
APPROVED
 Reviewed By :Yogesh Patel 05/13/2022
 Supervised By :mohammad ahmed 05/13/2022



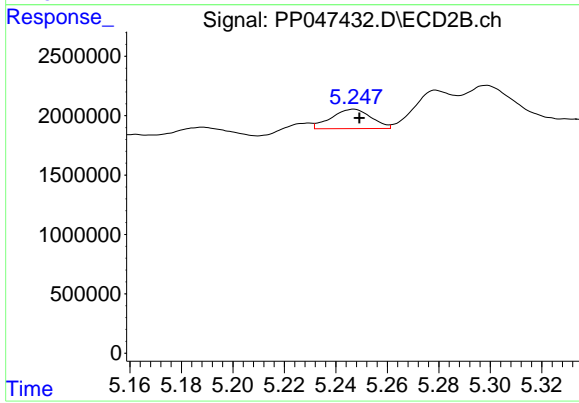
#26 AR-1254-1

R.T.: 5.087 min
 Delta R.T.: -0.003 min
 Response: 2517609
 Conc: 13.50 ng/ml



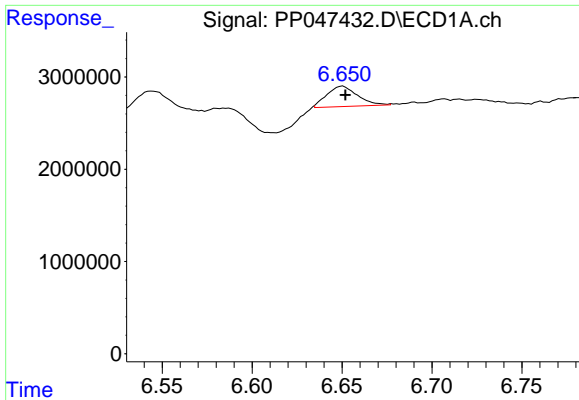
#27 AR-1254-2

R.T.: 6.247 min
 Delta R.T.: -0.003 min
 Response: 1749590
 Conc: 14.39 ng/ml m



#27 AR-1254-2

R.T.: 5.247 min
 Delta R.T.: -0.002 min
 Response: 1742925
 Conc: 10.58 ng/ml m



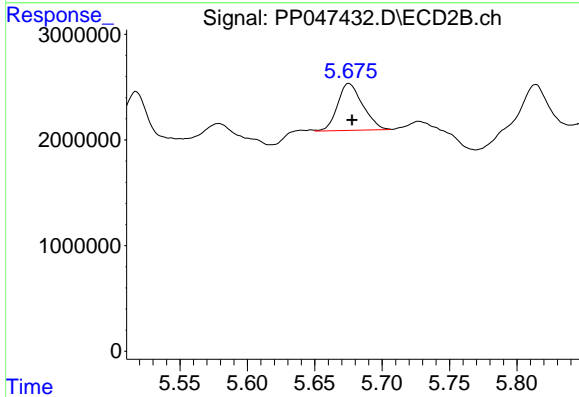
#28 AR-1254-3

R.T.: 6.650 min
 Delta R.T.: -0.002 min
 Response: 2634016
 Conc: 20.08 ng/ml

Instrument :
 ECD_P
 ClientSampleId :
 TP-5

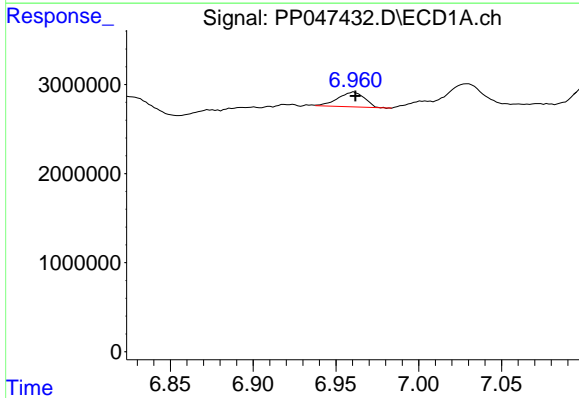
Manual Integrations
 APPROVED

Reviewed By :Yogesh Patel 05/13/2022
 Supervised By :mohammad ahmed 05/13/2022



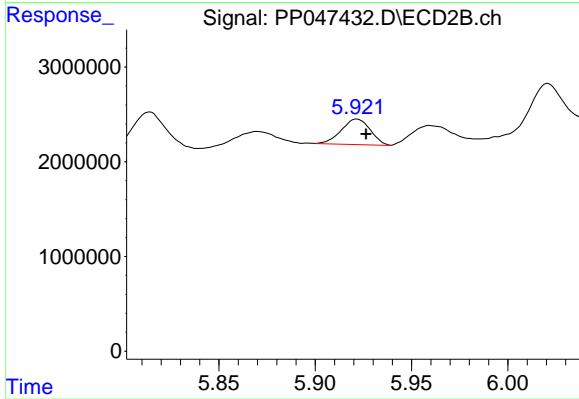
#28 AR-1254-3

R.T.: 5.675 min
 Delta R.T.: -0.003 min
 Response: 5795918
 Conc: 22.63 ng/ml m



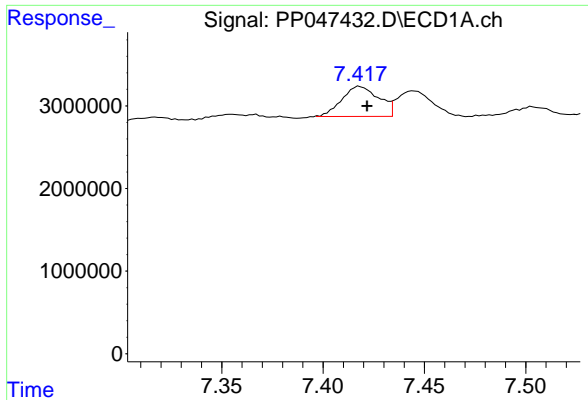
#29 AR-1254-4

R.T.: 6.961 min
 Delta R.T.: 0.000 min
 Response: 1856388
 Conc: 19.50 ng/ml



#29 AR-1254-4

R.T.: 5.921 min
 Delta R.T.: -0.006 min
 Response: 2812488
 Conc: 15.36 ng/ml m



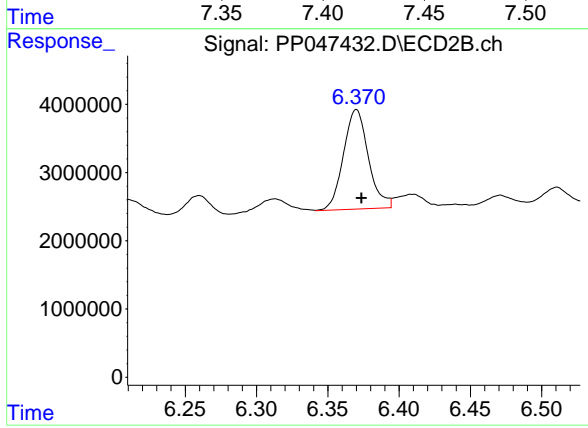
#30 AR-1254-5

R.T.: 7.417 min
 Delta R.T.: -0.005 min
 Response: 4739004
 Conc: 48.58 ng/ml

Instrument :
 ECD_P
 ClientSampleId :
 TP-5

Manual Integrations
 APPROVED

Reviewed By :Yogesh Patel 05/13/2022
 Supervised By :mohammad ahmed 05/13/2022



#30 AR-1254-5

R.T.: 6.370 min
 Delta R.T.: -0.003 min
 Response: 17766385
 Conc: 74.00 ng/ml