

Data Path : Z:\pestpcbsrv\HPCHEM1\ECD_P\Data\PP051225\
 Data File : PP071975.D
 Signal(s) : Signal #1: ECD1A.ch Signal #2: ECD2B.ch
 Acq On : 12 May 2025 15:12
 Operator : YP\AJ
 Sample : Q2007-01
 Misc :
 ALS Vial : 16 Sample Multiplier: 1

Instrument :
 ECD_P
ClientSampleId :
 OR-636-COMP-10

Manual Integrations
APPROVED
 Reviewed By :Yogesh Patel 05/13/2025
 Supervised By :mohammad ahmed 05/14/2025

Integration File signal 1: autoint1.e
 Integration File signal 2: autoint2.e
 Quant Time: May 13 02:27:06 2025
 Quant Method : Z:\pestpcbsrv\HPCHEM1\ECD_P\methods\PP042225.M
 Quant Title : GC EXTRACTABLES
 QLast Update : Wed Apr 23 05:02:06 2025
 Response via : Initial Calibration
 Integrator: ChemStation

Volume Inj. : 2 µl
 Signal #1 Phase : ZB-MR1 Signal #2 Phase: ZB-MR2
 Signal #1 Info : 30Mx0.32mmx 0.50µ Signal #2 Info : 30M x 0.32mm x 0.25µm

| Compound | RT#1 | RT#2 | Resp#1 | Resp#2 | ng/ml | ng/ml |
|-----------------------------|--------|-------|----------|----------|--------|---------|
| ----- | | | | | | |
| System Monitoring Compounds | | | | | | |
| 1) SA Tetrachlo... | 4.508 | 3.803 | 36850124 | 28932102 | 18.586 | 20.539 |
| 2) SA Decachlor... | 10.216 | 8.827 | 24343272 | 17988365 | 16.812 | 20.510m |

Target Compounds

(f)=RT Delta > 1/2 Window (#)=Amounts differ by > 25% (m)=manual int.

Data Path : Z:\pestpcbsrv\HPCHEM1\ECD_P\Data\PP051225\
 Data File : PP071975.D
 Signal(s) : Signal #1: ECD1A.ch Signal #2: ECD2B.ch
 Acq On : 12 May 2025 15:12
 Operator : YP\AJ
 Sample : Q2007-01
 Misc :
 ALS Vial : 16 Sample Multiplier: 1

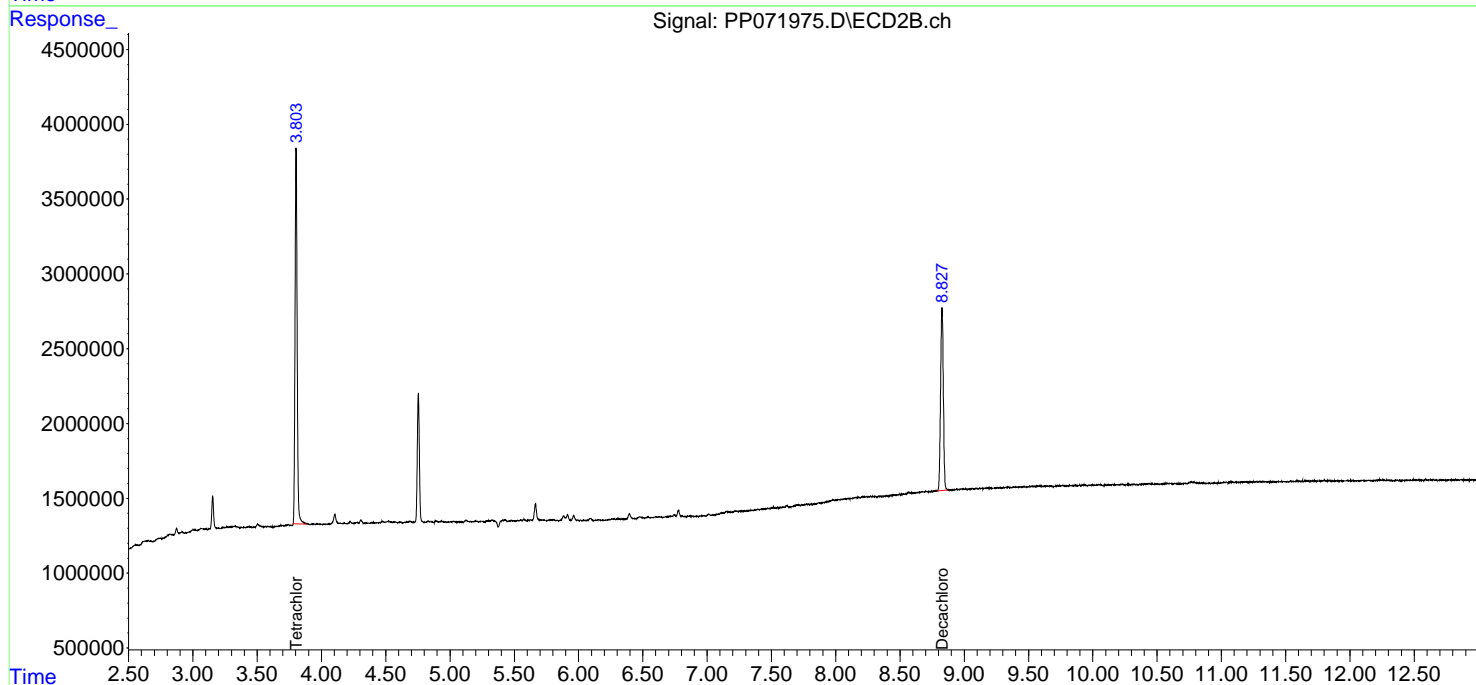
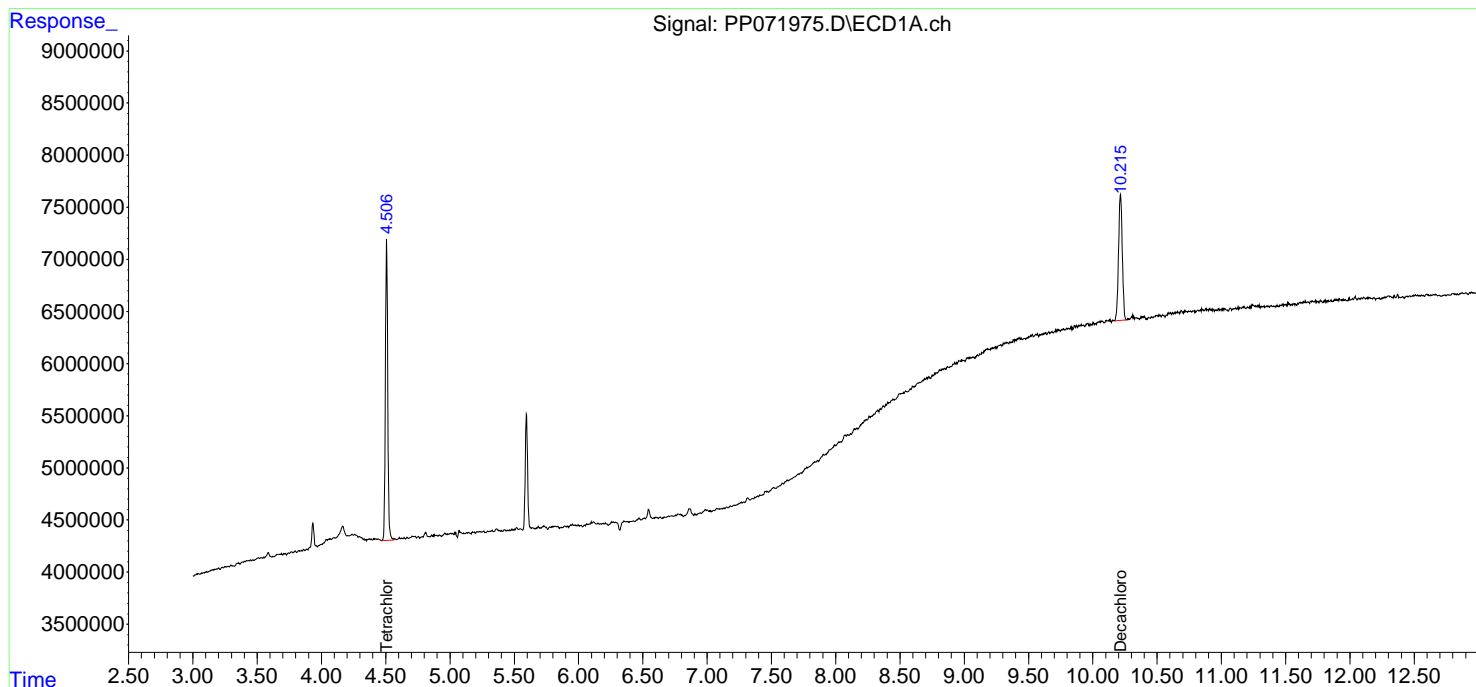
Instrument :
 ECD_P
ClientSampleId :
 OR-636-COMP-10

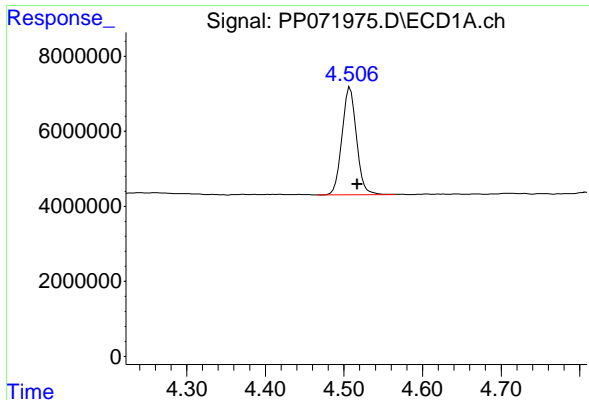
Manual Integrations
APPROVED

Reviewed By :Yogesh Patel 05/13/2025
 Supervised By :mohammad ahmed 05/14/2025

Integration File signal 1: autoint1.e
 Integration File signal 2: autoint2.e
 Quant Time: May 13 02:27:06 2025
 Quant Method : Z:\pestpcbsrv\HPCHEM1\ECD_P\methods\PP042225.M
 Quant Title : GC EXTRACTABLES
 QLast Update : Wed Apr 23 05:02:06 2025
 Response via : Initial Calibration
 Integrator: ChemStation

Volume Inj. : 2 µl
 Signal #1 Phase : ZB-MR1 Signal #2 Phase: ZB-MR2
 Signal #1 Info : 30Mx0.32mmx 0.50µm Signal #2 Info : 30M x 0.32mm x 0.25µm





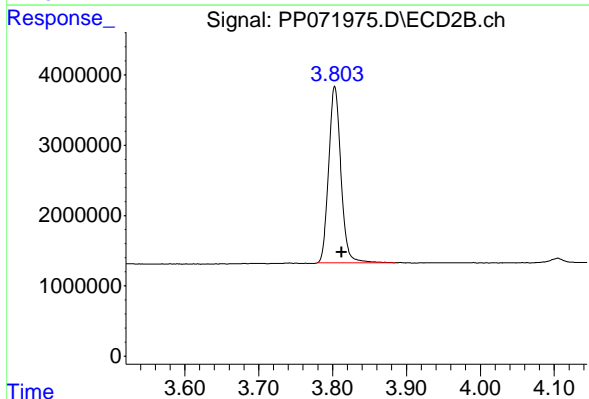
#1 Tetrachloro-m-xylene

R.T.: 4.508 min
 Delta R.T.: -0.009 min
 Response: 36850124
 Conc: 18.59 ng/ml

Instrument : ECD_P
 Client Sample Id : OR-636-COMP-10

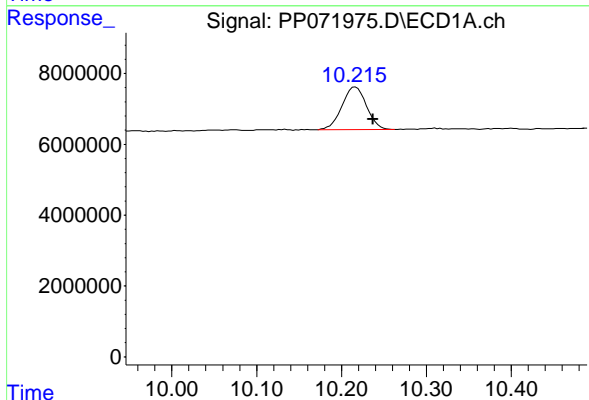
Manual Integrations
 APPROVED

Reviewed By :Yogesh Patel 05/13/2025
 Supervised By :mohammad ahmed 05/14/2025



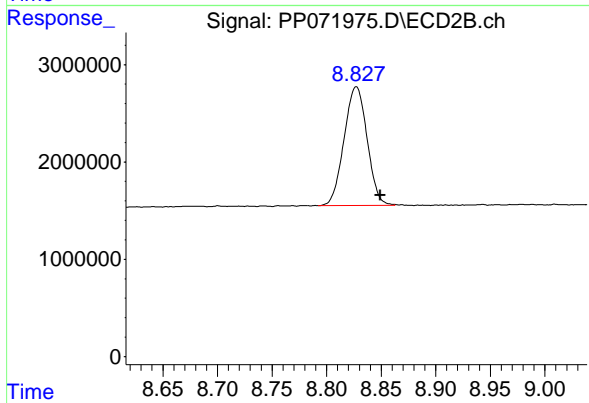
#1 Tetrachloro-m-xylene

R.T.: 3.803 min
 Delta R.T.: -0.009 min
 Response: 28932102
 Conc: 20.54 ng/ml



#2 Decachlorobiphenyl

R.T.: 10.216 min
 Delta R.T.: -0.021 min
 Response: 24343272
 Conc: 16.81 ng/ml



#2 Decachlorobiphenyl

R.T.: 8.827 min
 Delta R.T.: -0.022 min
 Response: 17988365
 Conc: 20.51 ng/ml m