

Data Path : Z:\pestpcbsrv\HPCHEM1\ECD_P\Data\PP051325\
 Data File : PP072003.D
 Signal(s) : Signal #1: ECD1A.ch Signal #2: ECD2B.ch
 Acq On : 13 May 2025 08:46
 Operator : YP\AJ
 Sample : AR1660CCC500
 Misc :
 ALS Vial : 3 Sample Multiplier: 1

Instrument :
 ECD_P
 ClientSampleId :
 AR1660CCC500

Integration File signal 1: autoint1.e
 Integration File signal 2: autoint2.e
 Quant Time: May 13 22:49:05 2025
 Quant Method : Z:\pestpcbsrv\HPCHEM1\ECD_P\methods\PP042225.M
 Quant Title : GC EXTRACTABLES
 QLast Update : Wed Apr 23 05:02:06 2025
 Response via : Initial Calibration
 Integrator: ChemStation

Volume Inj. : 2 µl
 Signal #1 Phase : ZB-MR2 Signal #2 Phase: ZB-MR2
 Signal #1 Info : 30Mx0.32mmx 0.50µ Signal #2 Info : 30M x 0.32mm x 0.25µm

Compound	RT#1	RT#2	Resp#1	Resp#2	ng/ml	ng/ml

System Monitoring Compounds						
1) SA Tetrachlo...	4.503	3.803	100.8E6	79855057	50.834	56.689
2) SA Decachlor...	10.210	8.825	78781894	46187018	54.407	52.662
Target Compounds						
3) L1 AR-1016-1	5.678	4.904	50806851	35065602	757.748	655.021
4) L1 AR-1016-2	5.678	4.904	50806851	35065602	495.057	459.192
5) L1 AR-1016-3	5.740	5.081	30713714	22139616	498.218	524.506
6) L1 AR-1016-4	5.837	5.122	25539655	18677907	497.867	541.609
7) L1 AR-1016-5	6.129	5.335	22830323	24665709	473.281	554.943
8) L2 AR-1221-1	4.701	4.011	3371857	3250660	139.813	147.791
9) L2 AR-1221-2	4.791	4.100	5079203	4747206	281.913	286.637
10) L2 AR-1221-3	4.866	4.175	18315272	17537540	323.527	361.770
11) L3 AR-1232-1	4.866	4.175	18315272	17537540	407.803	457.687
12) L3 AR-1232-2	5.391	4.904	24400902	35065602	1060.305	918.251
13) L3 AR-1232-3	5.678	5.081	50806851	22139616	1076.016	1045.540
14) L3 AR-1232-4	5.837	5.164	25539655	22556710	1101.828	1216.624
15) L3 AR-1232-5	5.926	5.335	21096332	24665709	1306.621	1239.368
16) L4 AR-1242-1	5.678	4.904	50806851	35065602	927.617	758.280
17) L4 AR-1242-2	5.678	4.904	50806851	35065602	597.865	531.114
18) L4 AR-1242-3	5.740	5.081	30713714	22139616	600.777	607.426
19) L4 AR-1242-4	5.837	5.164	25539655	22556710	605.082	631.653
20) L4 AR-1242-5	6.568	5.687	7058024	24408172	152.472	561.004 #
21) L5 AR-1248-1	5.678	4.904	50806851	35065602	1183.236	971.169
22) L5 AR-1248-2	5.926	5.122	21096332	18677907	349.089	381.474
23) L5 AR-1248-3	6.129	5.164	22830323	22556710	341.851	441.548 #
24) L5 AR-1248-4	6.526	5.335	7682250	24665709	90.795	406.640 #
25) L5 AR-1248-5	6.568	5.729	7058024	6707758	88.838	115.074 #
26) L6 AR-1254-1	6.526	5.687	7682250	24408172	93.742	267.047 #
27) L6 AR-1254-2	6.719	5.835	20497614	17542347	161.302	222.867 #
28) L6 AR-1254-3	7.083	6.253	11682960	33192610	91.434	280.087 #
29) L6 AR-1254-4	7.366	6.497	9277993	11203304	78.953	145.185 #
30) L6 AR-1254-5	7.812	6.883	7954859	51983599	73.840	512.317 #
31) L7 AR-1260-1	7.246	6.369	46814552	42011324	487.527	581.076
32) L7 AR-1260-2	7.500	6.557	70680701	50131351	494.003	573.182
33) L7 AR-1260-3	7.859	6.710	58452138	45054009	521.410	574.760
34) L7 AR-1260-4	8.083	7.180	56102615	36654241	497.078	580.794
35) L7 AR-1260-5	8.402	7.422	118.5E6	84476146	522.998	560.271
36) L8 AR-1262-1	8.083	6.921	56102615	43583610	388.277	383.617
37) L8 AR-1262-2	8.402	7.180	118.5E6	36654241	432.179	396.951
38) L8 AR-1262-3	8.725	7.702	77514364	21994943	423.859	290.575 #
39) L8 AR-1262-4	8.802	7.767	23176029	60977033	172.684	488.497 #
40) L8 AR-1262-5	9.456	8.266	31361235	22637252	355.723	407.929
41) L9 AR-1268-1	8.725	7.702	77514364	21994943	249.497	110.145 #

Data Path : Z:\pestpcbsrv\HPCHEM1\ECD_P\Data\PP051325\
 Data File : PP072003.D
 Signal(s) : Signal #1: ECD1A.ch Signal #2: ECD2B.ch
 Acq On : 13 May 2025 08:46
 Operator : YP\AJ
 Sample : AR1660CCC500
 Misc :
 ALS Vial : 3 Sample Multiplier: 1

Instrument :
 ECD_P
ClientSampleId :
 AR1660CCC500

Integration File signal 1: autoint1.e
 Integration File signal 2: autoint2.e
 Quant Time: May 13 22:49:05 2025
 Quant Method : Z:\pestpcbsrv\HPCHEM1\ECD_P\methods\PP042225.M
 Quant Title : GC EXTRACTABLES
 QLast Update : Wed Apr 23 05:02:06 2025
 Response via : Initial Calibration
 Integrator: ChemStation

Volume Inj. : 2 µl
 Signal #1 Phase : ZB-MR1 Signal #2 Phase: ZB-MR2
 Signal #1 Info : 30Mx0.32mmx 0.50µ Signal #2 Info : 30M x 0.32mm x 0.25µm

	Compound	RT#1	RT#2	Resp#1	Resp#2	ng/ml	ng/ml
42)	L9 AR-1268-2	8.802	7.767	23176029	60977033	89.918	360.754 #
43)	L9 AR-1268-3	9.038	7.972	1726961	793624	7.748	5.705 #
44)	L9 AR-1268-4	9.456	8.266	31361235	22637252	333.422	372.341
45)	L9 AR-1268-5	9.871	8.566	7979140	6375485	13.338	17.079 #

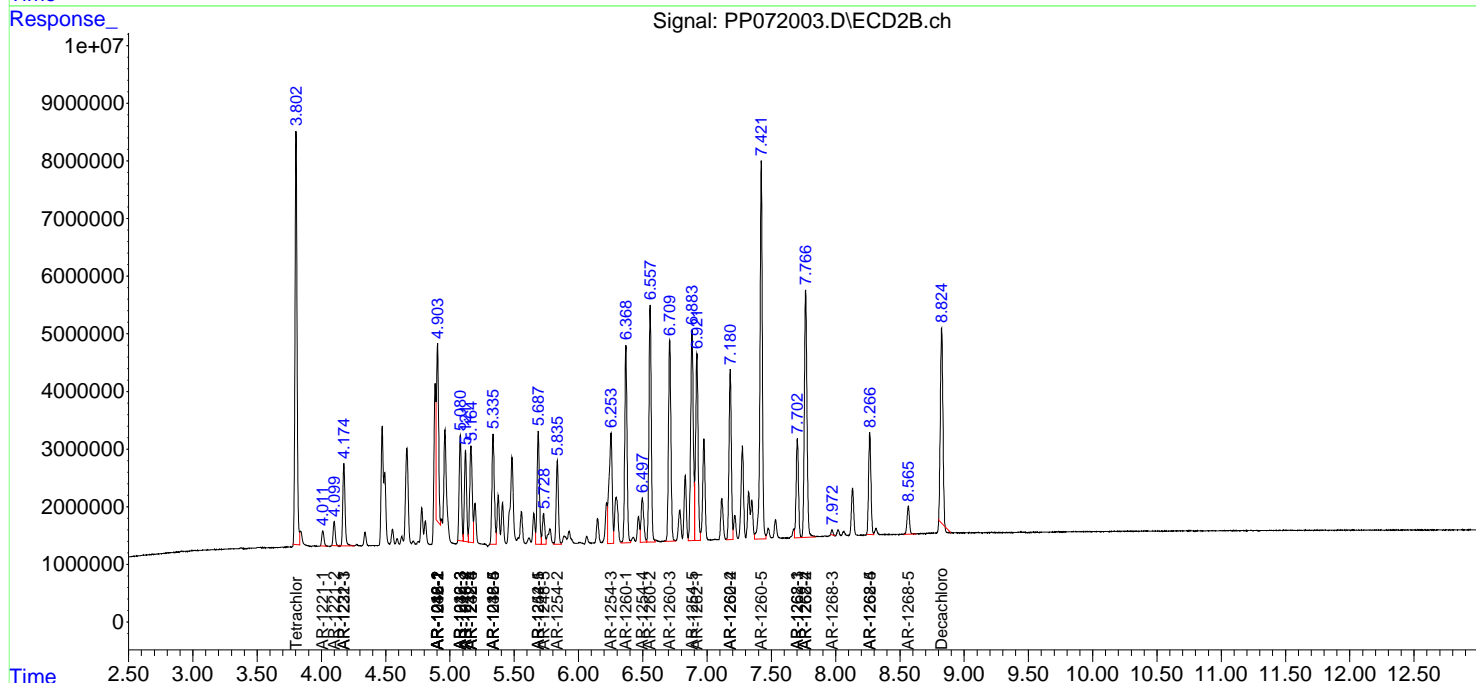
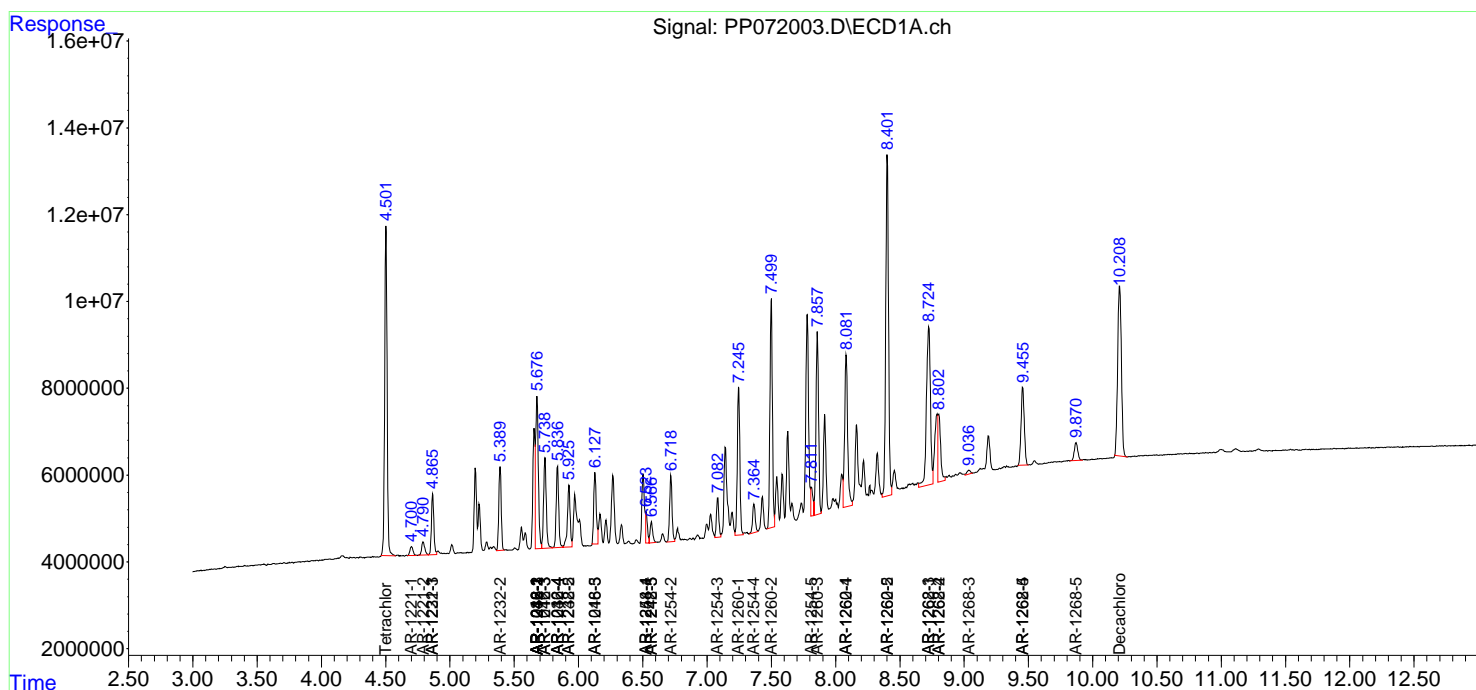
(f)=RT Delta > 1/2 Window (#)=Amounts differ by > 25% (m)=manual int.

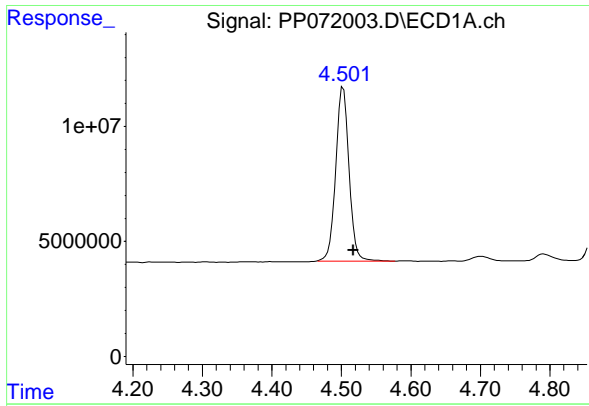
Data Path : Z:\pestpcbsrv\HPCHEM1\ECD_P\Data\PP051325\
 Data File : PP072003.D
 Signal(s) : Signal #1: ECD1A.ch Signal #2: ECD2B.ch
 Acq On : 13 May 2025 08:46
 Operator : YP\AJ
 Sample : AR1660CCC500
 Misc :
 ALS Vial : 3 Sample Multiplier: 1

Instrument :
 ECD_P
 ClientSampleId :
 AR1660CCC500

Integration File signal 1: autoint1.e
 Integration File signal 2: autoint2.e
 Quant Time: May 13 22:49:05 2025
 Quant Method : Z:\pestpcbsrv\HPCHEM1\ECD_P\methods\PP042225.M
 Quant Title : GC EXTRACTABLES
 QLast Update : Wed Apr 23 05:02:06 2025
 Response via : Initial Calibration
 Integrator: ChemStation

Volume Inj. : 2 µl
 Signal #1 Phase : ZB-MR1 Signal #2 Phase: ZB-MR2
 Signal #1 Info : 30Mx0.32mmx 0.50µm Signal #2 Info : 30M x 0.32mm x 0.25µm

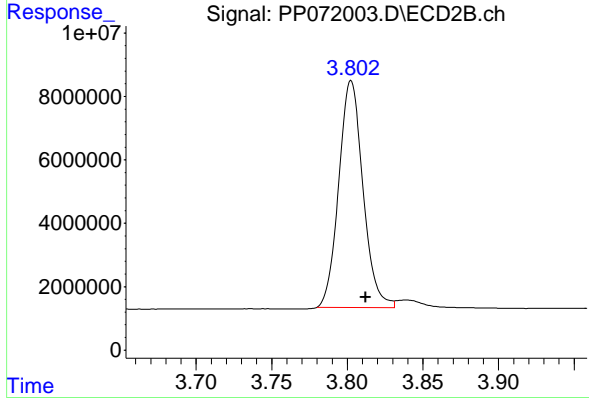




#1 Tetrachloro-m-xylene

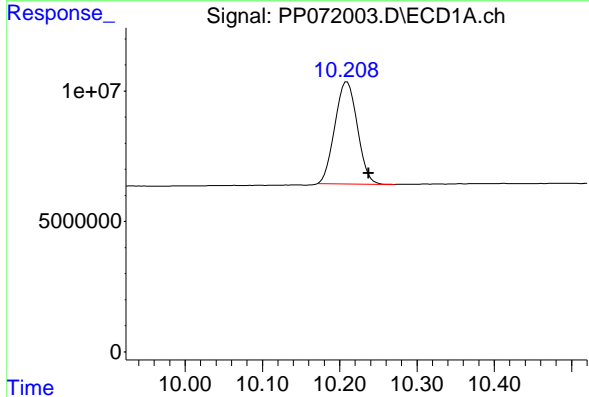
R.T.: 4.503 min
 Delta R.T.: -0.014 min
 Response: 100784573
 Conc: 50.83 ng/ml

Instrument :
 ECD_P
 ClientSampleId :
 AR1660CCC500



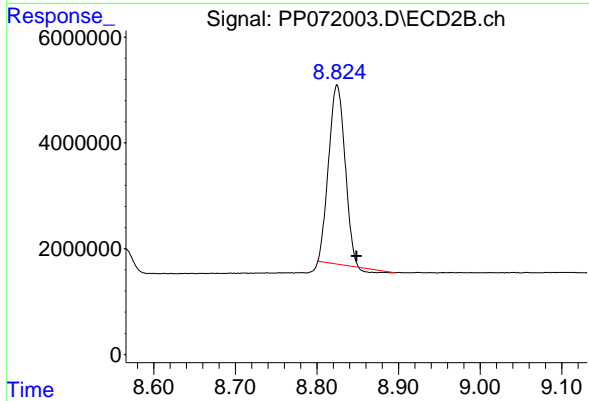
#1 Tetrachloro-m-xylene

R.T.: 3.803 min
 Delta R.T.: -0.010 min
 Response: 79855057
 Conc: 56.69 ng/ml



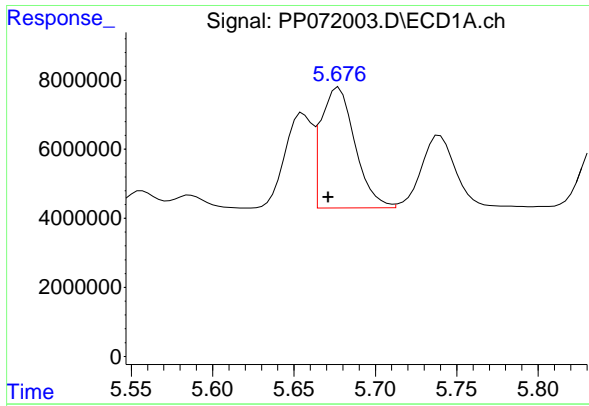
#2 Decachlorobiphenyl

R.T.: 10.210 min
 Delta R.T.: -0.028 min
 Response: 78781894
 Conc: 54.41 ng/ml



#2 Decachlorobiphenyl

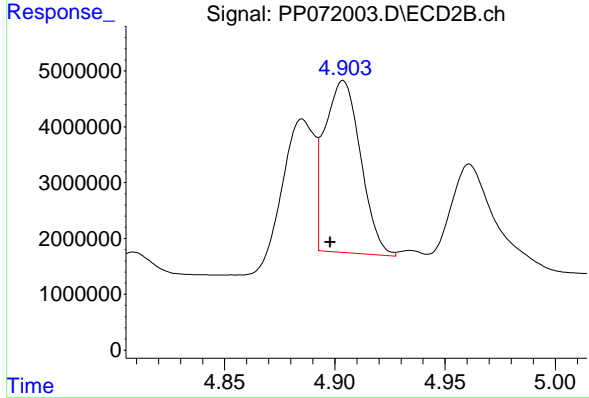
R.T.: 8.825 min
 Delta R.T.: -0.024 min
 Response: 46187018
 Conc: 52.66 ng/ml



#3 AR-1016-1

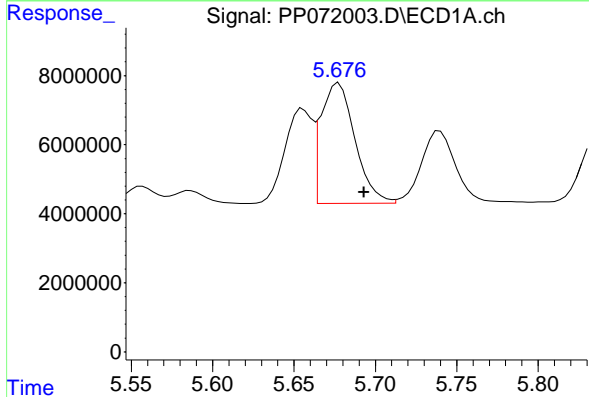
R.T.: 5.678 min
 Delta R.T.: 0.006 min
 Response: 50806851
 Conc: 757.75 ng/ml

Instrument :
 ECD_P
 ClientSampleId :
 AR1660CCC500



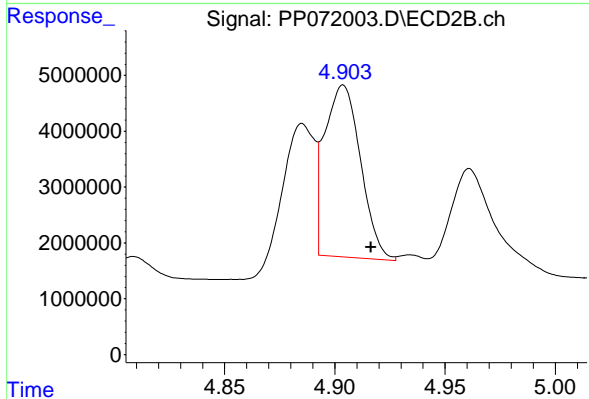
#3 AR-1016-1

R.T.: 4.904 min
 Delta R.T.: 0.006 min
 Response: 35065602
 Conc: 655.02 ng/ml



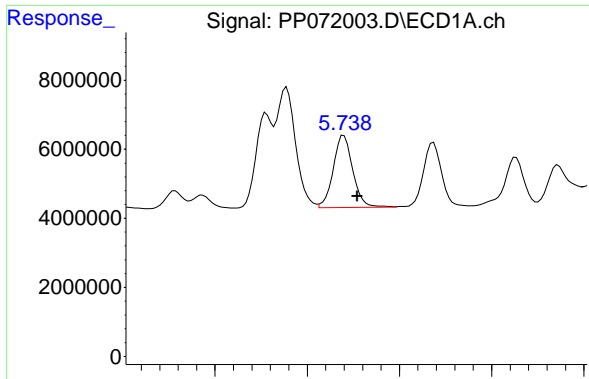
#4 AR-1016-2

R.T.: 5.678 min
 Delta R.T.: -0.015 min
 Response: 50806851
 Conc: 495.06 ng/ml



#4 AR-1016-2

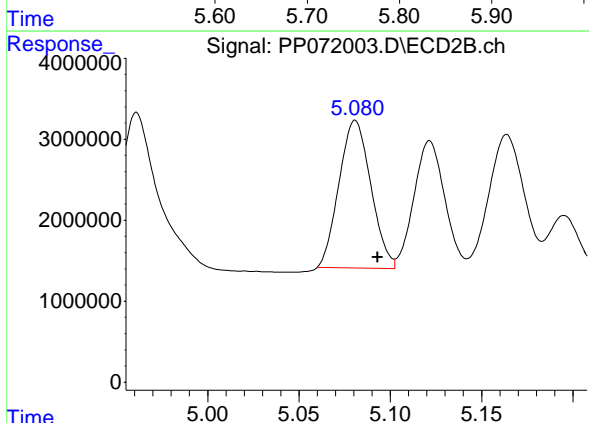
R.T.: 4.904 min
 Delta R.T.: -0.013 min
 Response: 35065602
 Conc: 459.19 ng/ml



#5 AR-1016-3

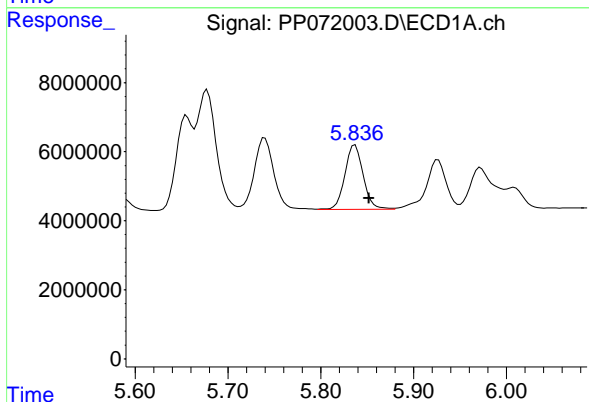
R.T.: 5.740 min
 Delta R.T.: -0.015 min
 Response: 30713714
 Conc: 498.22 ng/ml

Instrument :
 ECD_P
 ClientSampleId :
 AR1660CCC500



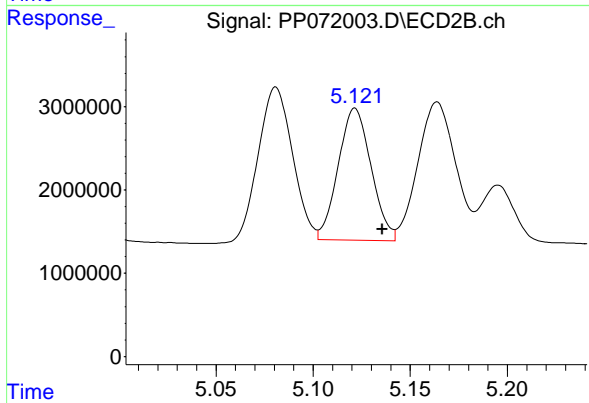
#5 AR-1016-3

R.T.: 5.081 min
 Delta R.T.: -0.012 min
 Response: 22139616
 Conc: 524.51 ng/ml



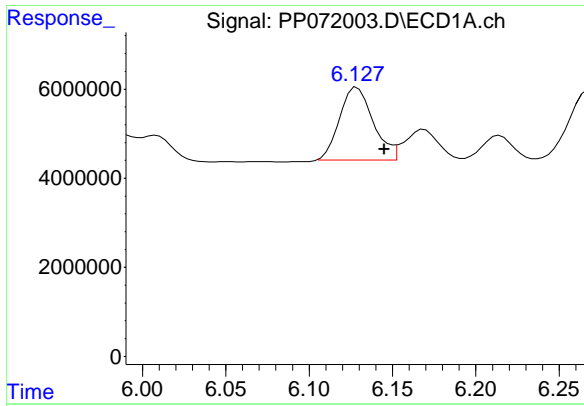
#6 AR-1016-4

R.T.: 5.837 min
 Delta R.T.: -0.015 min
 Response: 25539655
 Conc: 497.87 ng/ml



#6 AR-1016-4

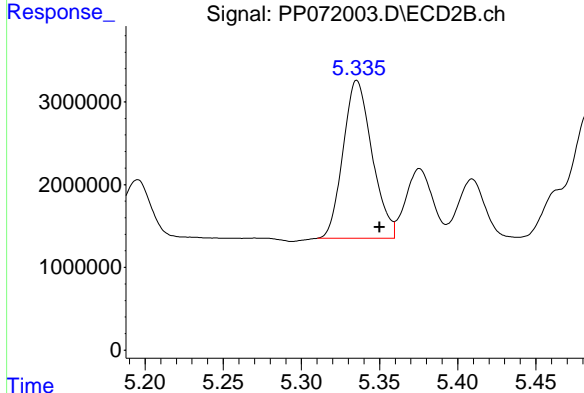
R.T.: 5.122 min
 Delta R.T.: -0.014 min
 Response: 18677907
 Conc: 541.61 ng/ml



#7 AR-1016-5

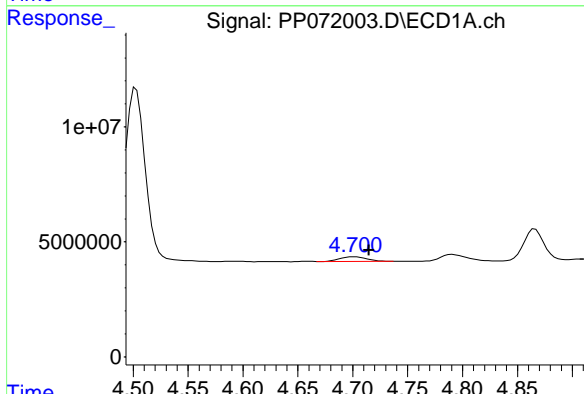
R.T.: 6.129 min
 Delta R.T.: -0.016 min
 Response: 22830323
 Conc: 473.28 ng/ml

Instrument :
 ECD_P
 ClientSampleId :
 AR1660CCC500



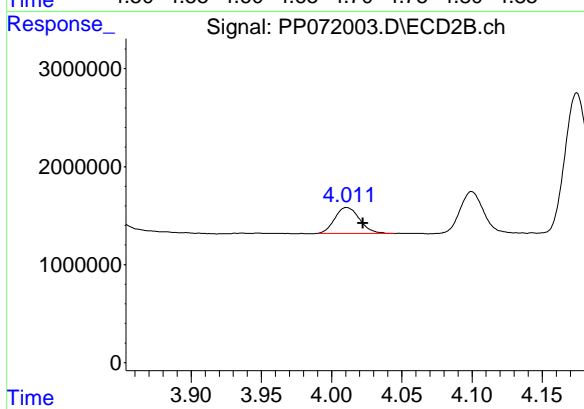
#7 AR-1016-5

R.T.: 5.335 min
 Delta R.T.: -0.014 min
 Response: 24665709
 Conc: 554.94 ng/ml



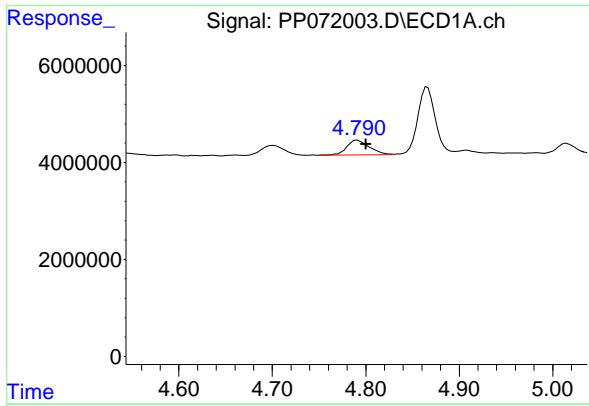
#8 AR-1221-1

R.T.: 4.701 min
 Delta R.T.: -0.013 min
 Response: 3371857
 Conc: 139.81 ng/ml



#8 AR-1221-1

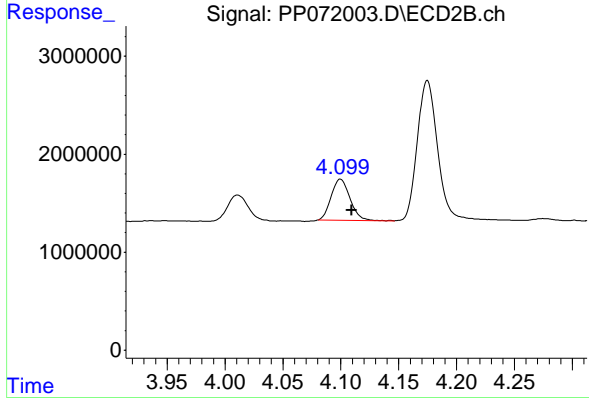
R.T.: 4.011 min
 Delta R.T.: -0.011 min
 Response: 3250660
 Conc: 147.79 ng/ml



#9 AR-1221-2

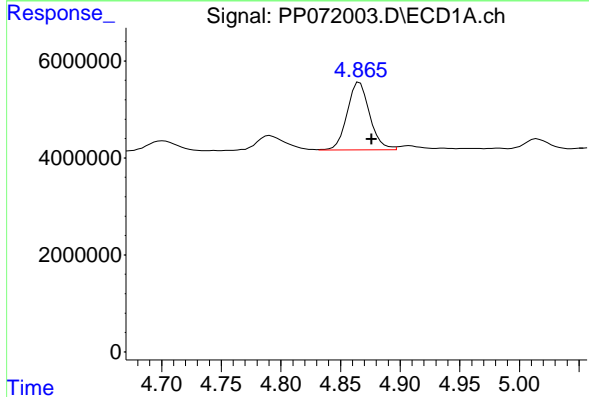
R.T.: 4.791 min
 Delta R.T.: -0.009 min
 Response: 5079203
 Conc: 281.91 ng/ml

Instrument :
 ECD_P
 ClientSampleId :
 AR1660CCC500



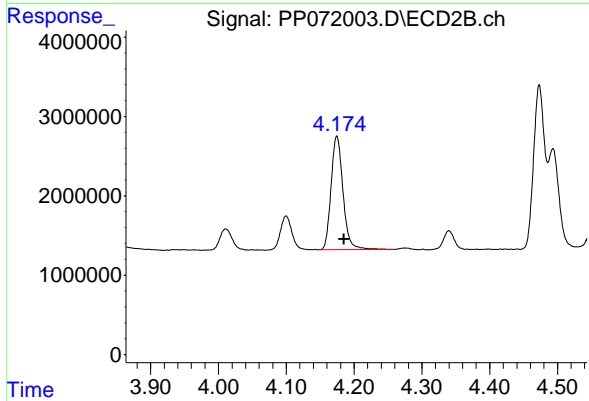
#9 AR-1221-2

R.T.: 4.100 min
 Delta R.T.: -0.010 min
 Response: 4747206
 Conc: 286.64 ng/ml



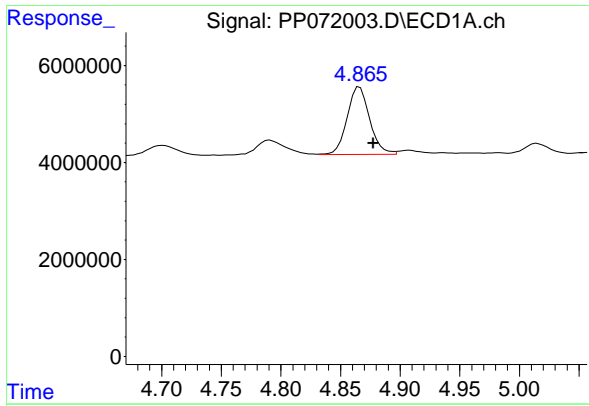
#10 AR-1221-3

R.T.: 4.866 min
 Delta R.T.: -0.010 min
 Response: 18315272
 Conc: 323.53 ng/ml



#10 AR-1221-3

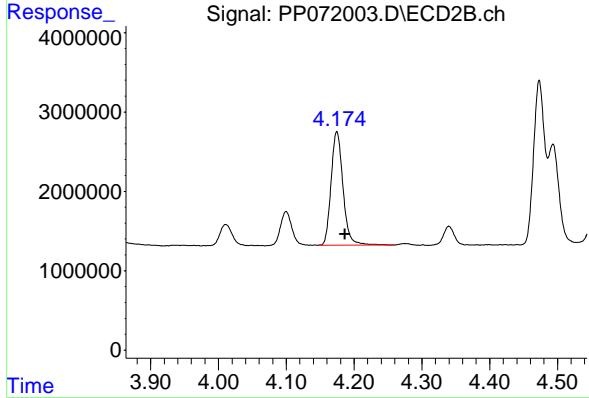
R.T.: 4.175 min
 Delta R.T.: -0.010 min
 Response: 17537540
 Conc: 361.77 ng/ml



#11 AR-1232-1

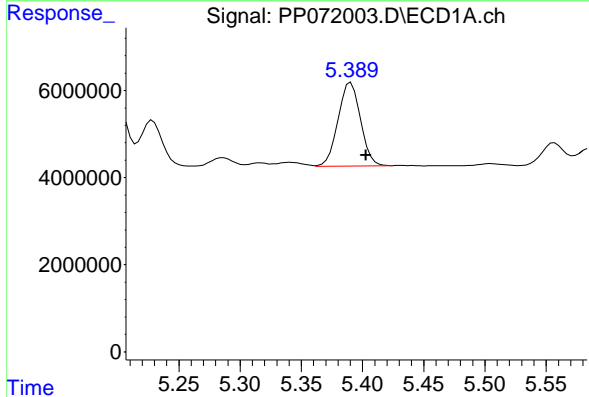
R.T.: 4.866 min
 Delta R.T.: -0.012 min
 Response: 18315272
 Conc: 407.80 ng/ml

Instrument :
 ECD_P
 ClientSampleId :
 AR1660CCC500



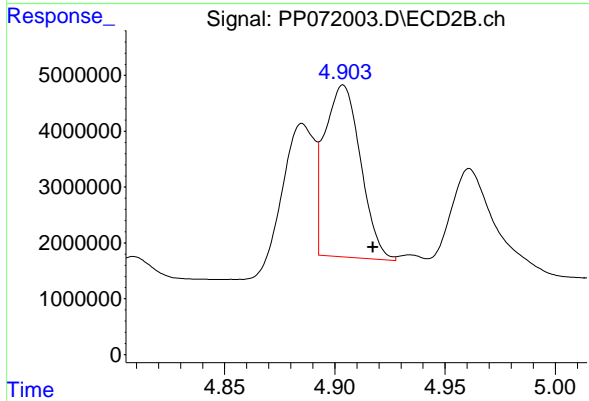
#11 AR-1232-1

R.T.: 4.175 min
 Delta R.T.: -0.012 min
 Response: 17537540
 Conc: 457.69 ng/ml



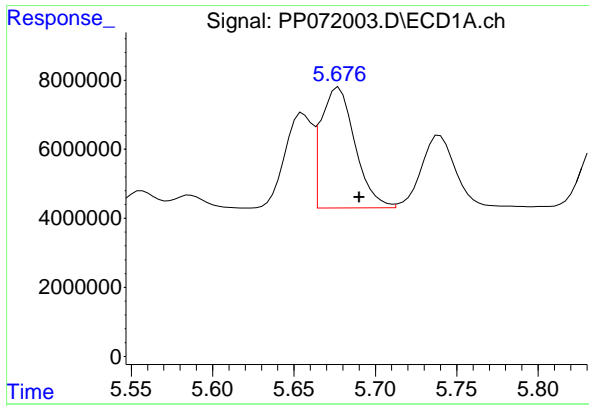
#12 AR-1232-2

R.T.: 5.391 min
 Delta R.T.: -0.013 min
 Response: 24400902
 Conc: 1060.31 ng/ml



#12 AR-1232-2

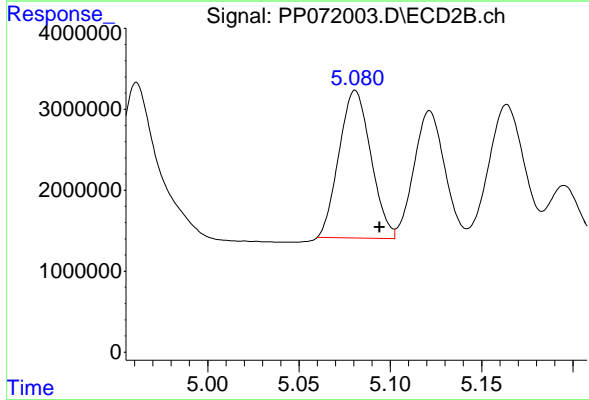
R.T.: 4.904 min
 Delta R.T.: -0.014 min
 Response: 35065602
 Conc: 918.25 ng/ml



#13 AR-1232-3

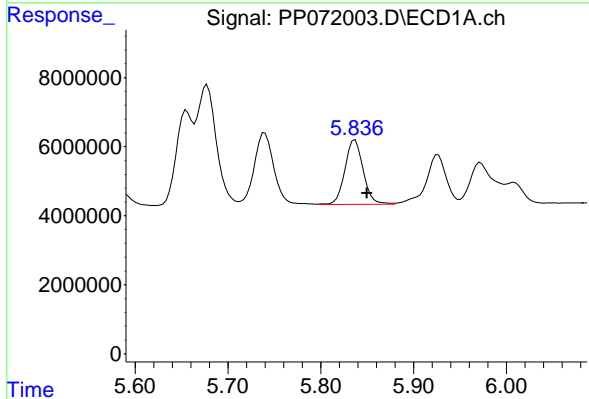
R.T.: 5.678 min
 Delta R.T.: -0.013 min
 Response: 50806851
 Conc: 1076.02 ng/ml

Instrument :
 ECD_P
 ClientSampleId :
 AR1660CCC500



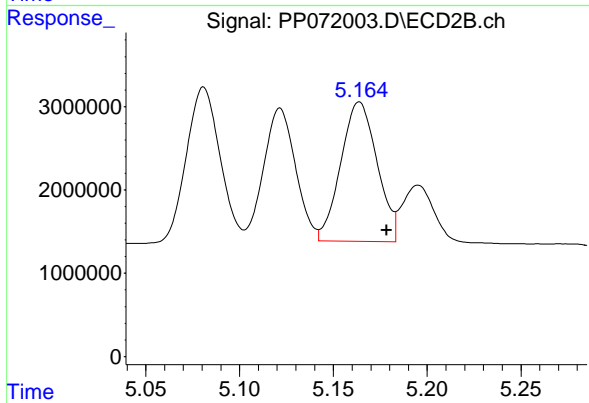
#13 AR-1232-3

R.T.: 5.081 min
 Delta R.T.: -0.013 min
 Response: 22139616
 Conc: 1045.54 ng/ml



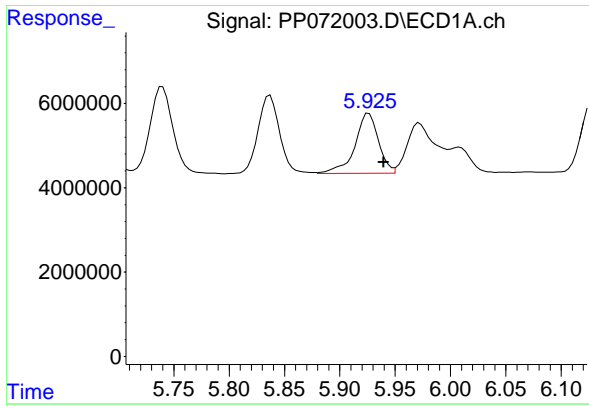
#14 AR-1232-4

R.T.: 5.837 min
 Delta R.T.: -0.013 min
 Response: 25539655
 Conc: 1101.83 ng/ml



#14 AR-1232-4

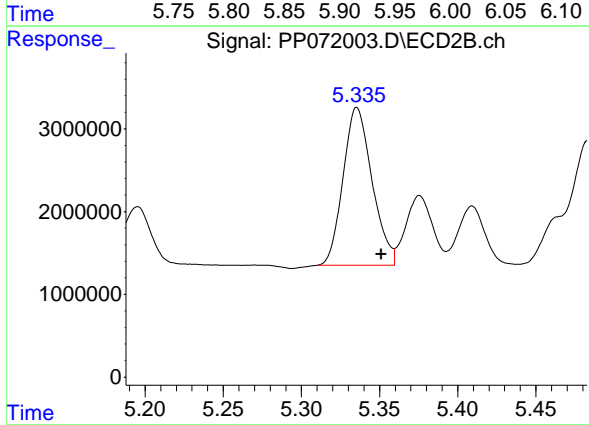
R.T.: 5.164 min
 Delta R.T.: -0.014 min
 Response: 22556710
 Conc: 1216.62 ng/ml



#15 AR-1232-5

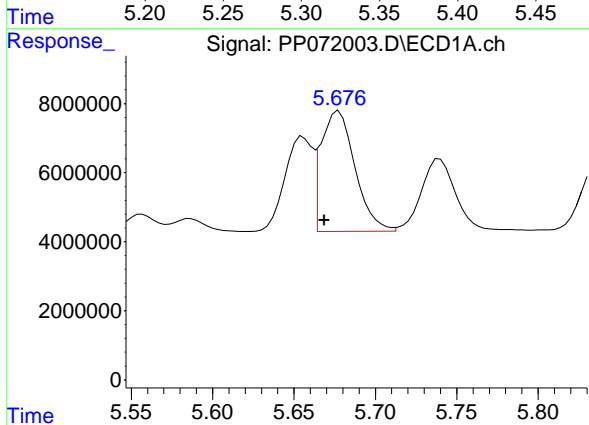
R.T.: 5.926 min
 Delta R.T.: -0.013 min
 Response: 21096332
 Conc: 1306.62 ng/ml

Instrument :
 ECD_P
 ClientSampleId :
 AR1660CCC500



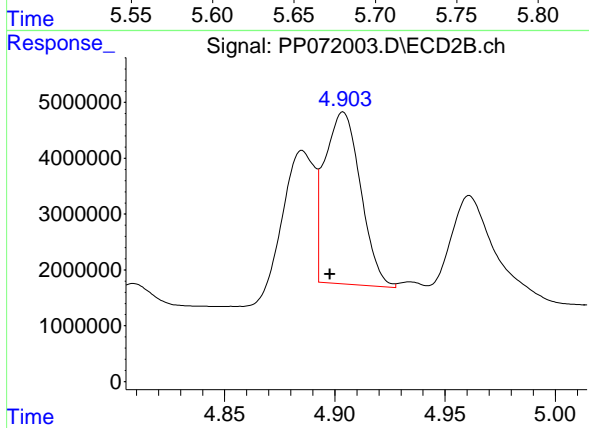
#15 AR-1232-5

R.T.: 5.335 min
 Delta R.T.: -0.016 min
 Response: 24665709
 Conc: 1239.37 ng/ml



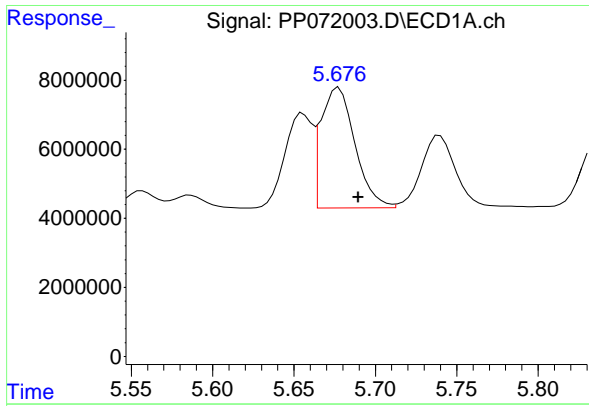
#16 AR-1242-1

R.T.: 5.678 min
 Delta R.T.: 0.009 min
 Response: 50806851
 Conc: 927.62 ng/ml



#16 AR-1242-1

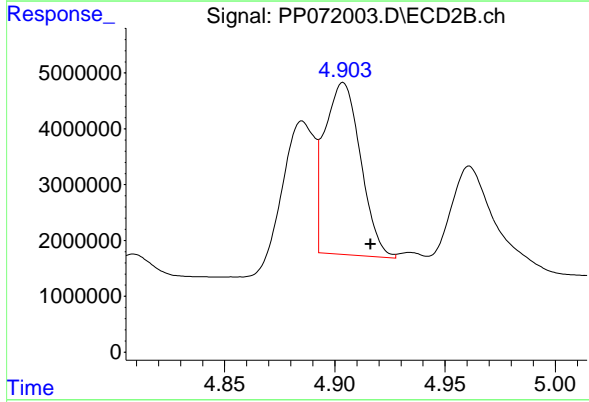
R.T.: 4.904 min
 Delta R.T.: 0.006 min
 Response: 35065602
 Conc: 758.28 ng/ml



#17 AR-1242-2

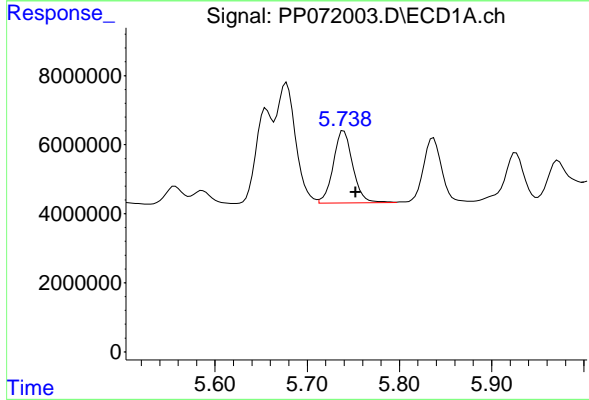
R.T.: 5.678 min
 Delta R.T.: -0.012 min
 Response: 50806851
 Conc: 597.86 ng/ml

Instrument :
 ECD_P
 ClientSampleId :
 AR1660CCC500



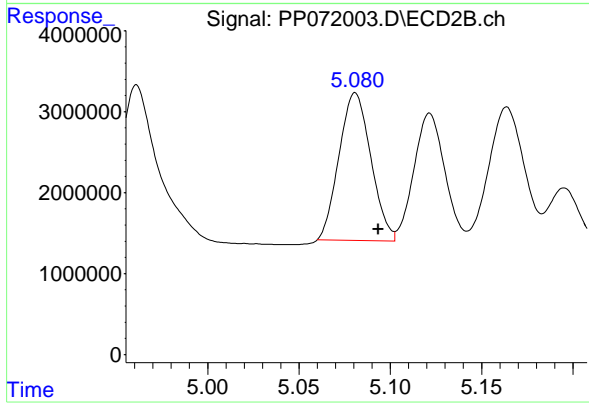
#17 AR-1242-2

R.T.: 4.904 min
 Delta R.T.: -0.012 min
 Response: 35065602
 Conc: 531.11 ng/ml



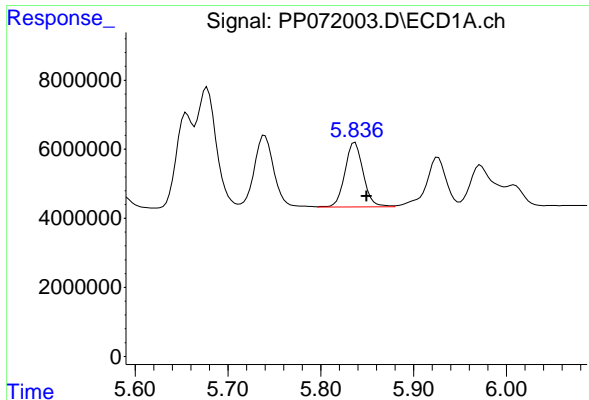
#18 AR-1242-3

R.T.: 5.740 min
 Delta R.T.: -0.013 min
 Response: 30713714
 Conc: 600.78 ng/ml



#18 AR-1242-3

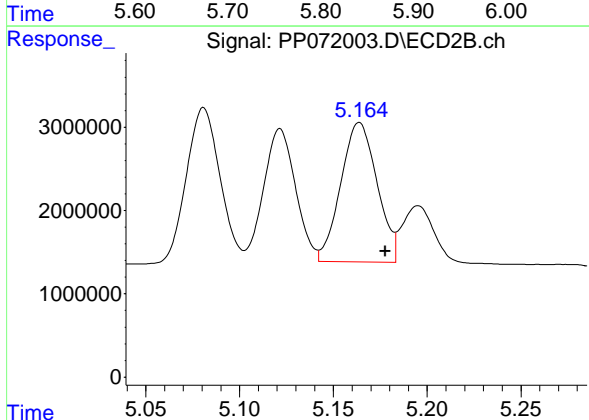
R.T.: 5.081 min
 Delta R.T.: -0.013 min
 Response: 22139616
 Conc: 607.43 ng/ml



#19 AR-1242-4

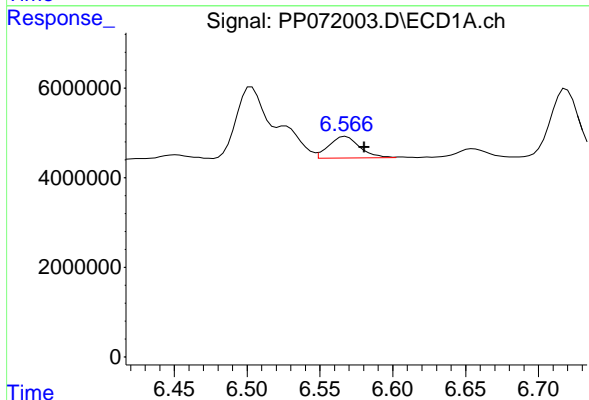
R.T.: 5.837 min
 Delta R.T.: -0.012 min
 Response: 25539655
 Conc: 605.08 ng/ml

Instrument :
 ECD_P
 ClientSampleId :
 AR1660CCC500



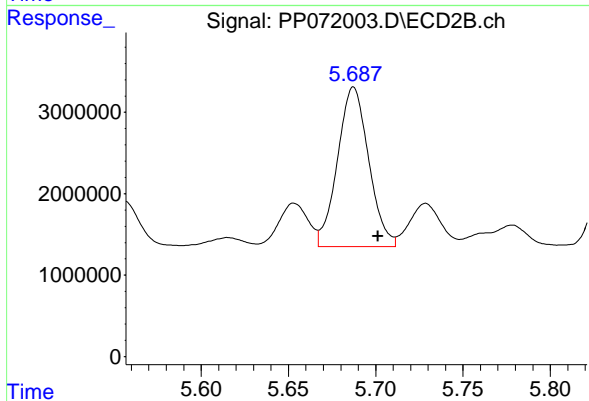
#19 AR-1242-4

R.T.: 5.164 min
 Delta R.T.: -0.014 min
 Response: 22556710
 Conc: 631.65 ng/ml



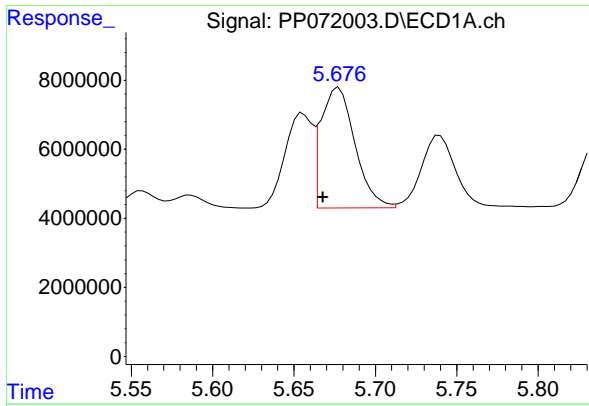
#20 AR-1242-5

R.T.: 6.568 min
 Delta R.T.: -0.013 min
 Response: 7058024
 Conc: 152.47 ng/ml



#20 AR-1242-5

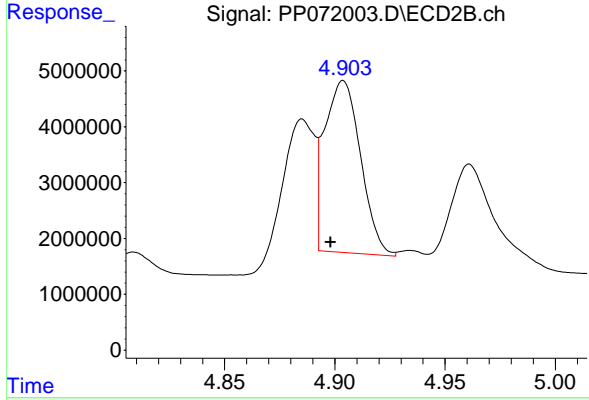
R.T.: 5.687 min
 Delta R.T.: -0.014 min
 Response: 24408172
 Conc: 561.00 ng/ml



#21 AR-1248-1

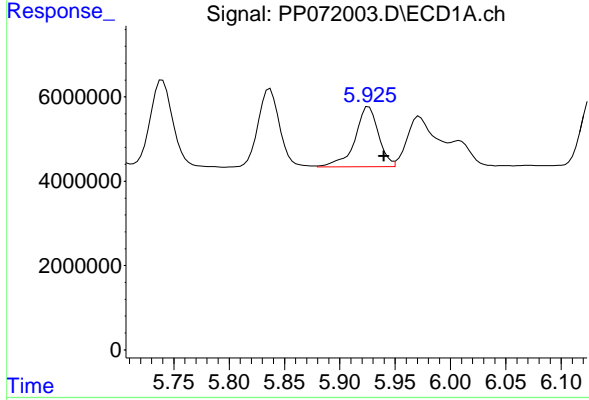
R.T.: 5.678 min
 Delta R.T.: 0.010 min
 Response: 50806851
 Conc: 1183.24 ng/ml

Instrument :
 ECD_P
 ClientSampleId :
 AR1660CCC500



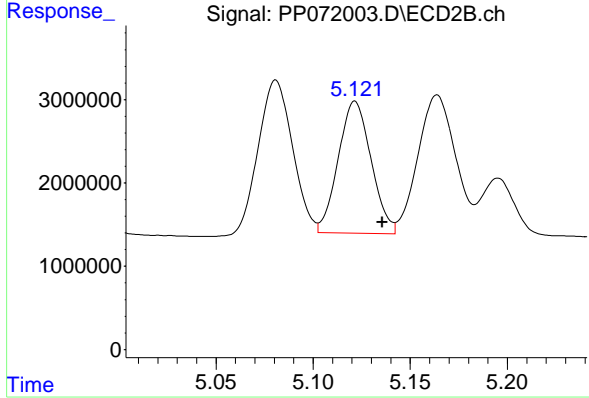
#21 AR-1248-1

R.T.: 4.904 min
 Delta R.T.: 0.006 min
 Response: 35065602
 Conc: 971.17 ng/ml



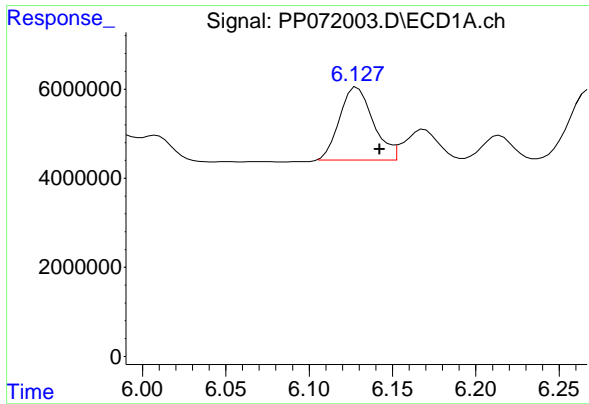
#22 AR-1248-2

R.T.: 5.926 min
 Delta R.T.: -0.014 min
 Response: 21096332
 Conc: 349.09 ng/ml



#22 AR-1248-2

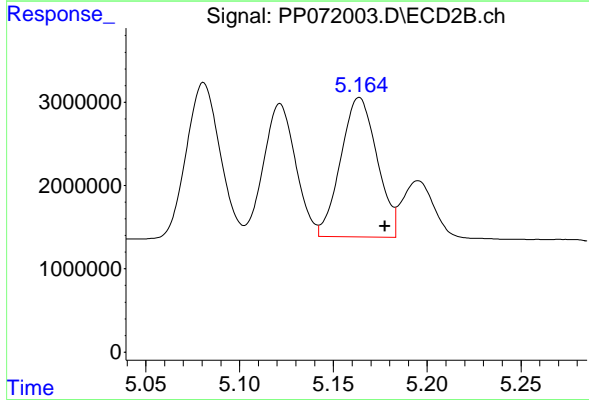
R.T.: 5.122 min
 Delta R.T.: -0.014 min
 Response: 18677907
 Conc: 381.47 ng/ml



#23 AR-1248-3

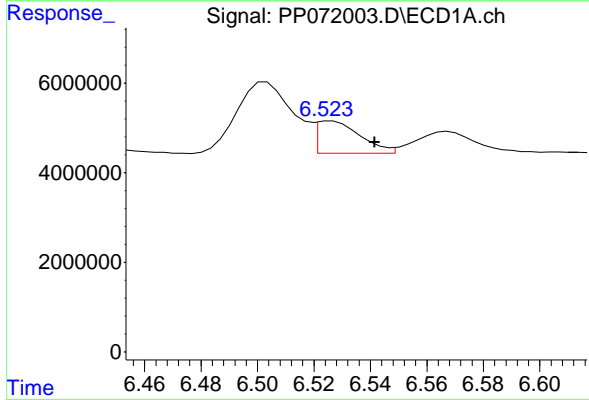
R.T.: 6.129 min
 Delta R.T.: -0.013 min
 Response: 22830323
 Conc: 341.85 ng/ml

Instrument :
 ECD_P
 ClientSampleId :
 AR1660CCC500



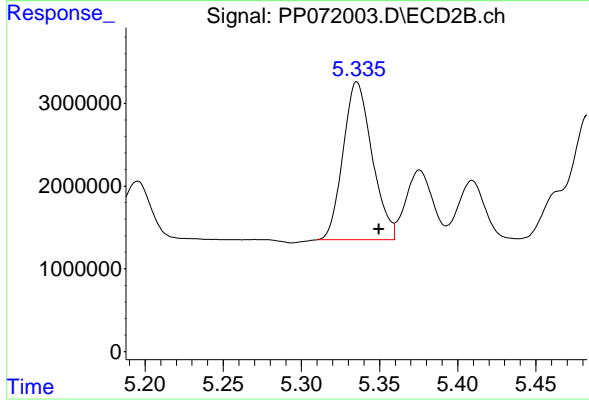
#23 AR-1248-3

R.T.: 5.164 min
 Delta R.T.: -0.014 min
 Response: 22556710
 Conc: 441.55 ng/ml



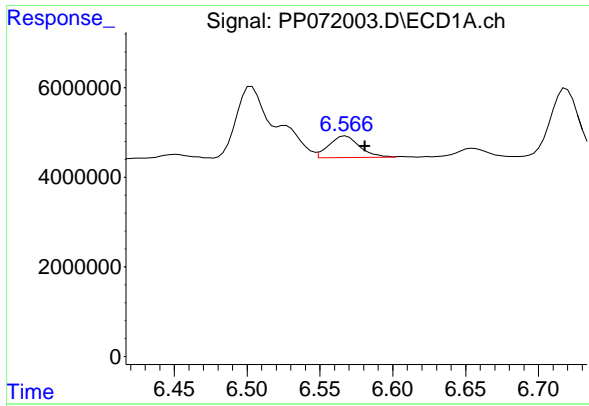
#24 AR-1248-4

R.T.: 6.526 min
 Delta R.T.: -0.016 min
 Response: 7682250
 Conc: 90.80 ng/ml



#24 AR-1248-4

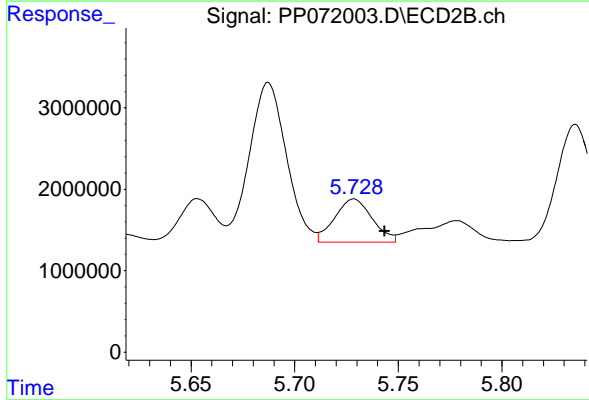
R.T.: 5.335 min
 Delta R.T.: -0.014 min
 Response: 24665709
 Conc: 406.64 ng/ml



#25 AR-1248-5

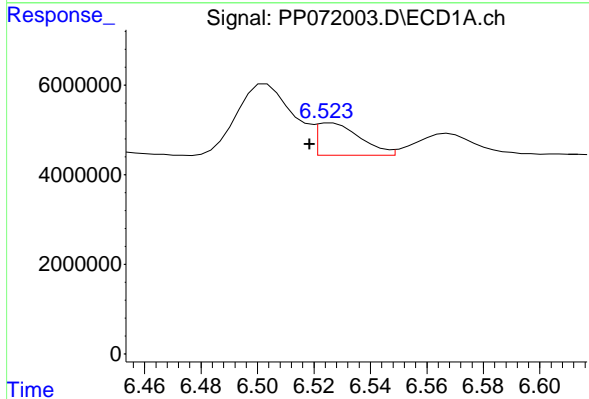
R.T.: 6.568 min
 Delta R.T.: -0.013 min
 Response: 7058024
 Conc: 88.84 ng/ml

Instrument :
 ECD_P
 ClientSampleId :
 AR1660CCC500



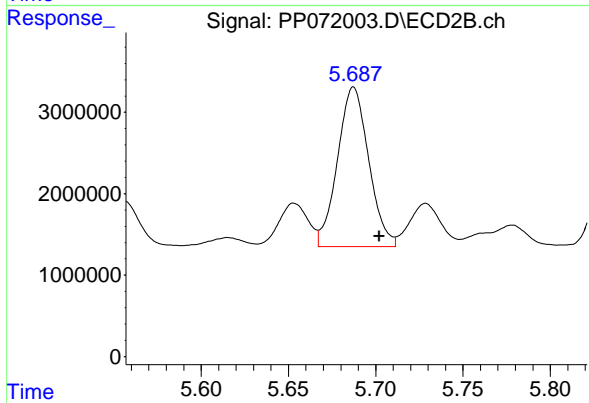
#25 AR-1248-5

R.T.: 5.729 min
 Delta R.T.: -0.015 min
 Response: 6707758
 Conc: 115.07 ng/ml



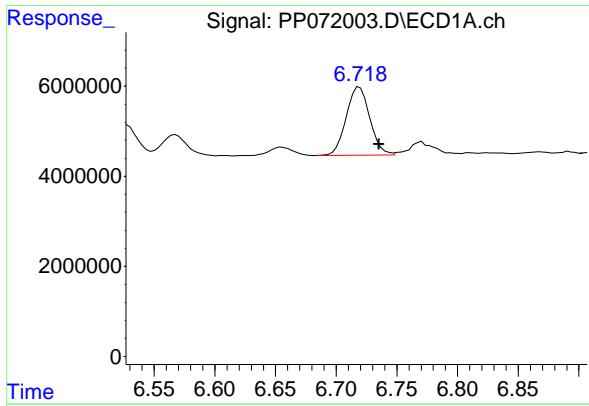
#26 AR-1254-1

R.T.: 6.526 min
 Delta R.T.: 0.008 min
 Response: 7682250
 Conc: 93.74 ng/ml



#26 AR-1254-1

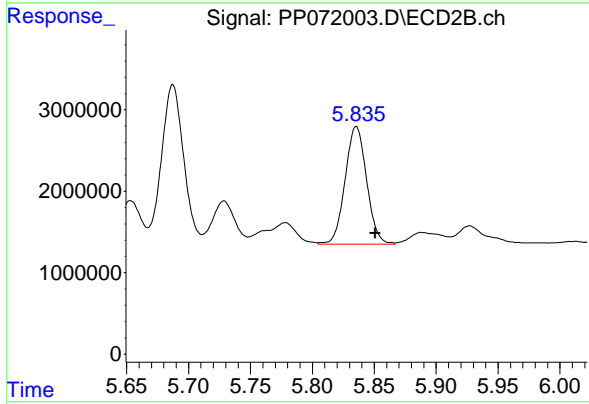
R.T.: 5.687 min
 Delta R.T.: -0.015 min
 Response: 24408172
 Conc: 267.05 ng/ml



#27 AR-1254-2

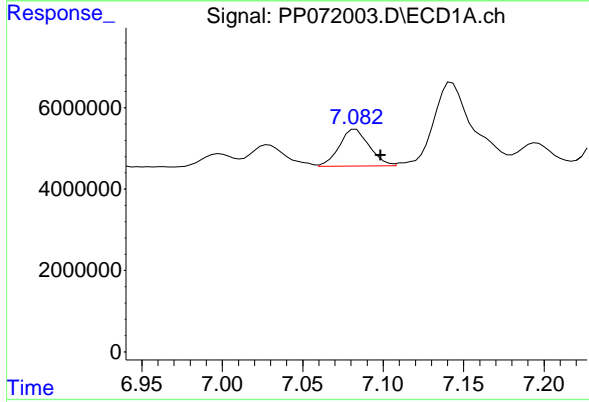
R.T.: 6.719 min
 Delta R.T.: -0.016 min
 Response: 20497614
 Conc: 161.30 ng/ml

Instrument :
 ECD_P
 ClientSampleId :
 AR1660CCC500



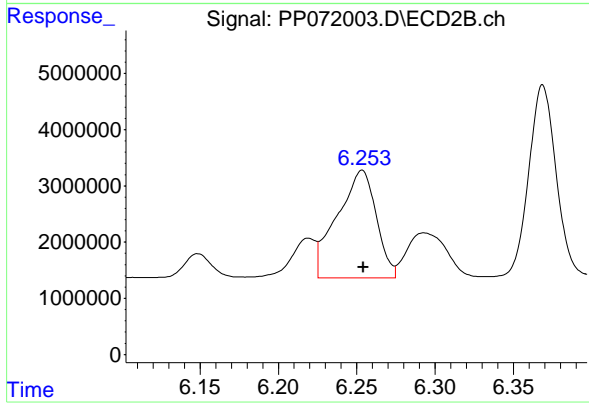
#27 AR-1254-2

R.T.: 5.835 min
 Delta R.T.: -0.015 min
 Response: 17542347
 Conc: 222.87 ng/ml



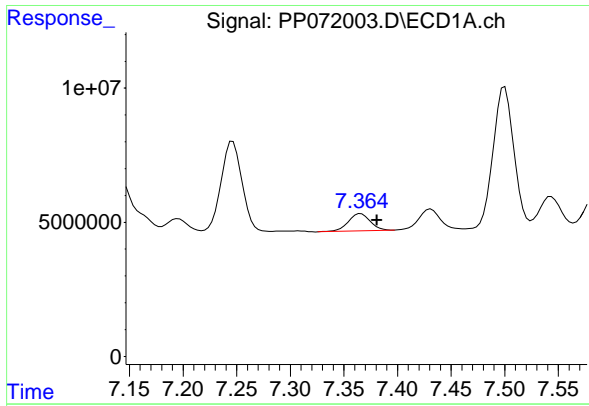
#28 AR-1254-3

R.T.: 7.083 min
 Delta R.T.: -0.015 min
 Response: 11682960
 Conc: 91.43 ng/ml



#28 AR-1254-3

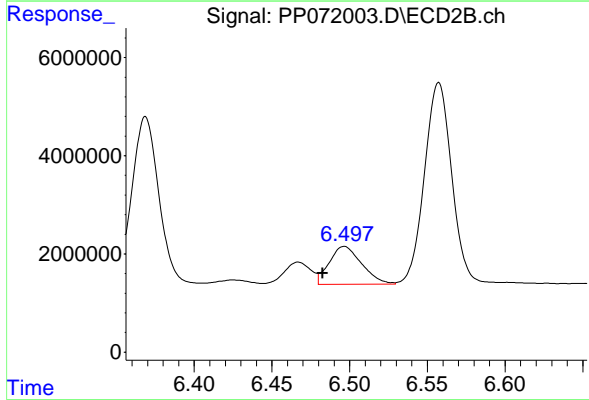
R.T.: 6.253 min
 Delta R.T.: 0.000 min
 Response: 33192610
 Conc: 280.09 ng/ml



#29 AR-1254-4

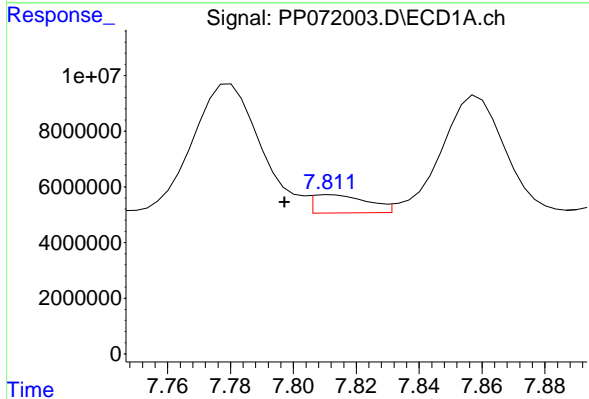
R.T.: 7.366 min
 Delta R.T.: -0.015 min
 Response: 9277993
 Conc: 78.95 ng/ml

Instrument :
 ECD_P
 ClientSampleId :
 AR1660CCC500



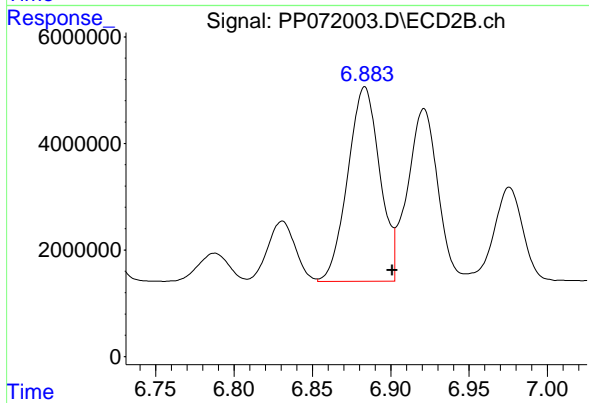
#29 AR-1254-4

R.T.: 6.497 min
 Delta R.T.: 0.014 min
 Response: 11203304
 Conc: 145.19 ng/ml



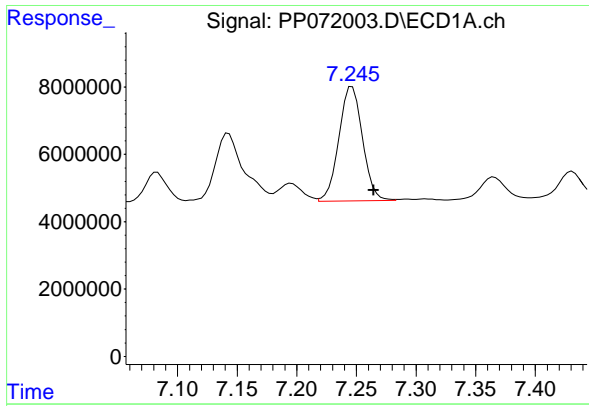
#30 AR-1254-5

R.T.: 7.812 min
 Delta R.T.: 0.015 min
 Response: 7954859
 Conc: 73.84 ng/ml



#30 AR-1254-5

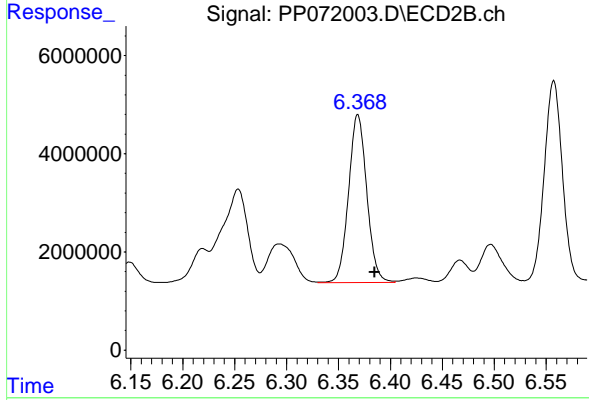
R.T.: 6.883 min
 Delta R.T.: -0.017 min
 Response: 51983599
 Conc: 512.32 ng/ml



#31 AR-1260-1

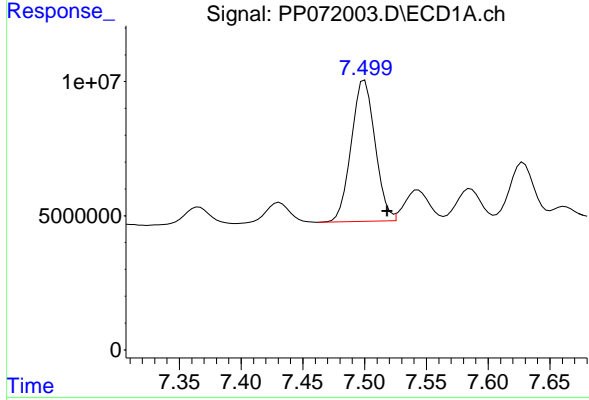
R.T.: 7.246 min
 Delta R.T.: -0.018 min
 Response: 46814552
 Conc: 487.53 ng/ml

Instrument :
 ECD_P
 ClientSampleId :
 AR1660CCC500



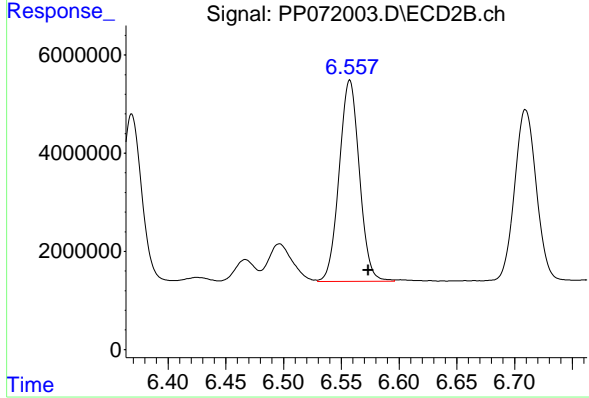
#31 AR-1260-1

R.T.: 6.369 min
 Delta R.T.: -0.016 min
 Response: 42011324
 Conc: 581.08 ng/ml



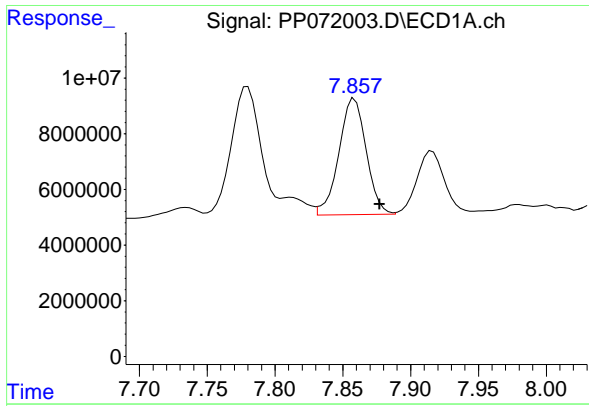
#32 AR-1260-2

R.T.: 7.500 min
 Delta R.T.: -0.018 min
 Response: 70680701
 Conc: 494.00 ng/ml



#32 AR-1260-2

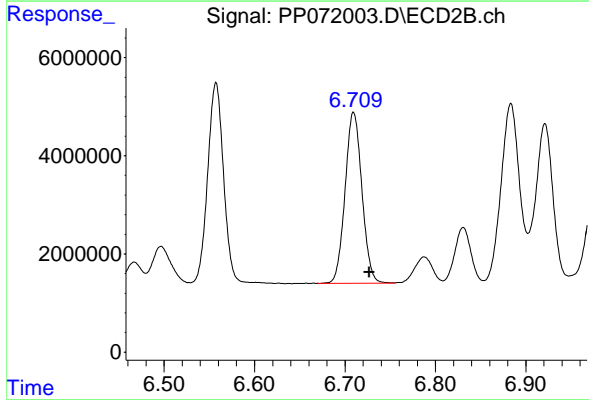
R.T.: 6.557 min
 Delta R.T.: -0.016 min
 Response: 50131351
 Conc: 573.18 ng/ml



#33 AR-1260-3

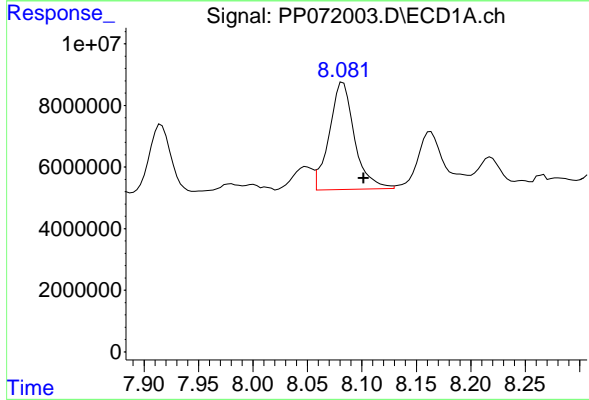
R.T.: 7.859 min
 Delta R.T.: -0.018 min
 Response: 58452138
 Conc: 521.41 ng/ml

Instrument :
 ECD_P
 ClientSampleId :
 AR1660CCC500



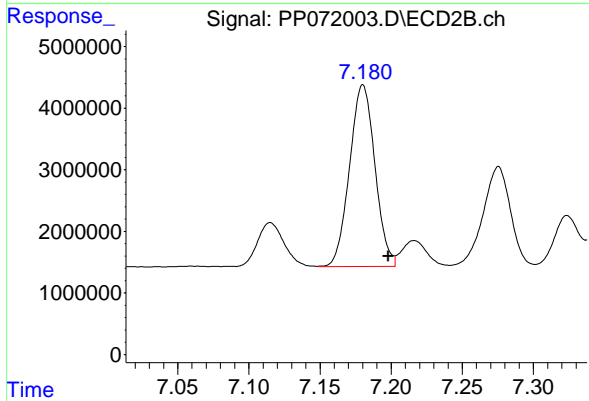
#33 AR-1260-3

R.T.: 6.710 min
 Delta R.T.: -0.017 min
 Response: 45054009
 Conc: 574.76 ng/ml



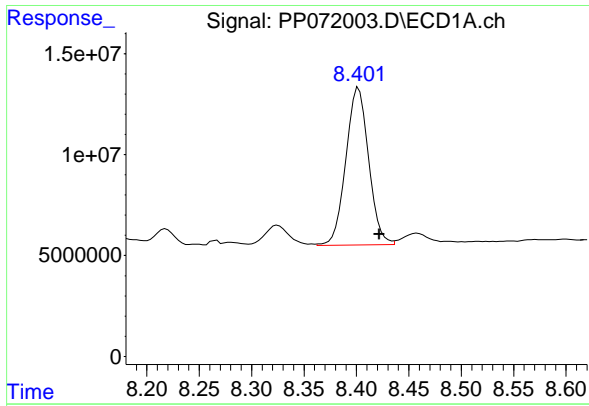
#34 AR-1260-4

R.T.: 8.083 min
 Delta R.T.: -0.019 min
 Response: 56102615
 Conc: 497.08 ng/ml



#34 AR-1260-4

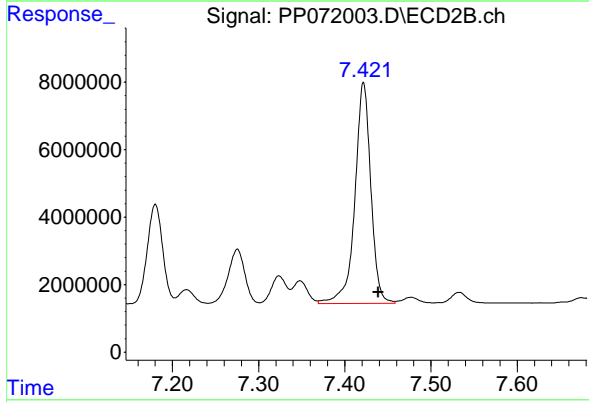
R.T.: 7.180 min
 Delta R.T.: -0.018 min
 Response: 36654241
 Conc: 580.79 ng/ml



#35 AR-1260-5

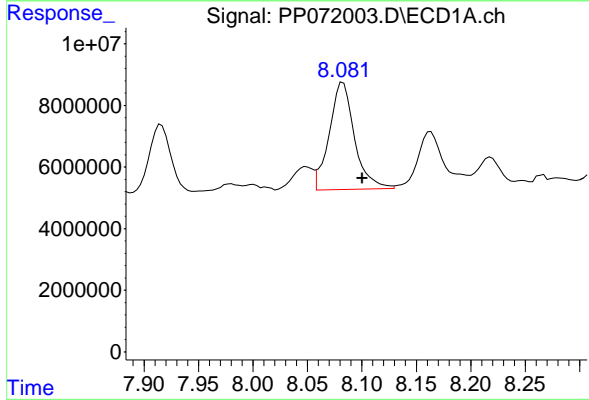
R.T.: 8.402 min
 Delta R.T.: -0.020 min
 Response: 118497441
 Conc: 523.00 ng/ml

Instrument :
 ECD_P
 ClientSampleId :
 AR1660CCC500



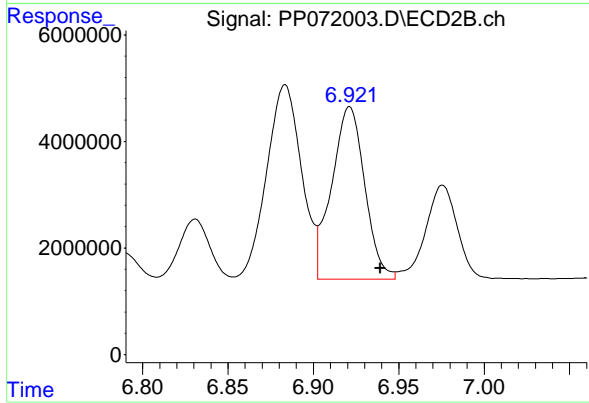
#35 AR-1260-5

R.T.: 7.422 min
 Delta R.T.: -0.017 min
 Response: 84476146
 Conc: 560.27 ng/ml



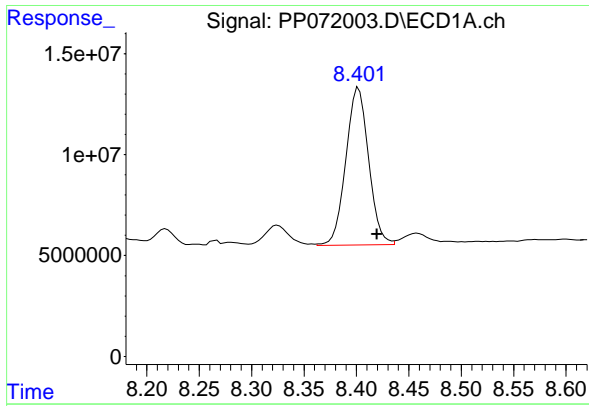
#36 AR-1262-1

R.T.: 8.083 min
 Delta R.T.: -0.018 min
 Response: 56102615
 Conc: 388.28 ng/ml



#36 AR-1262-1

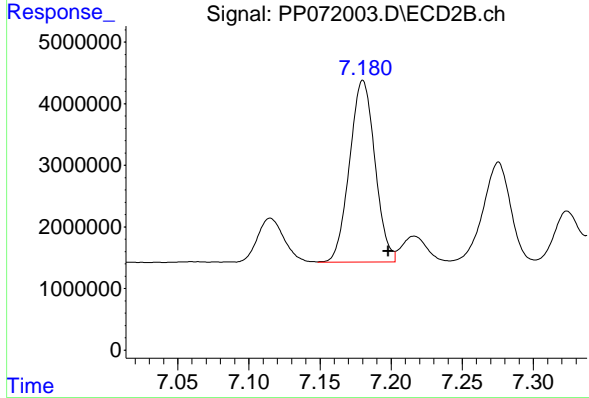
R.T.: 6.921 min
 Delta R.T.: -0.018 min
 Response: 43583610
 Conc: 383.62 ng/ml



#37 AR-1262-2

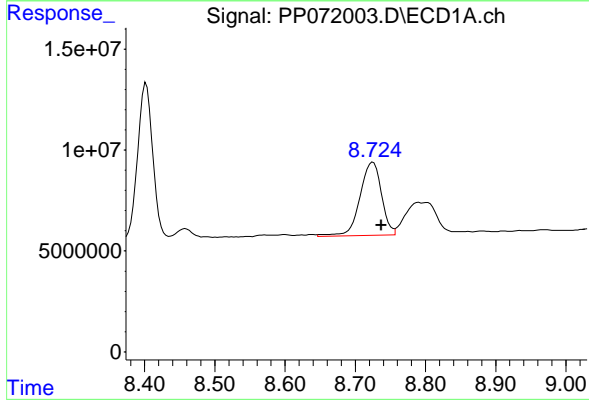
R.T.: 8.402 min
 Delta R.T.: -0.018 min
 Response: 118497441
 Conc: 432.18 ng/ml

Instrument :
 ECD_P
 ClientSampleId :
 AR1660CCC500



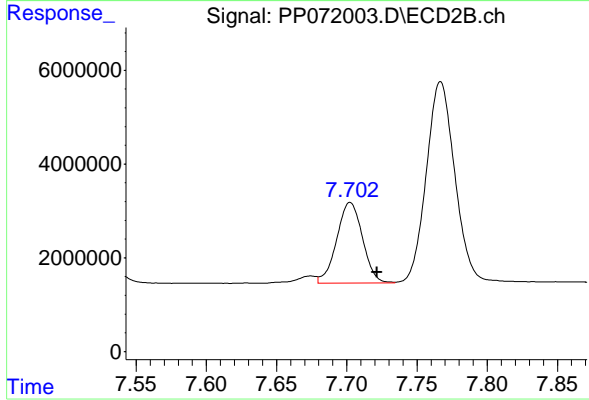
#37 AR-1262-2

R.T.: 7.180 min
 Delta R.T.: -0.018 min
 Response: 36654241
 Conc: 396.95 ng/ml



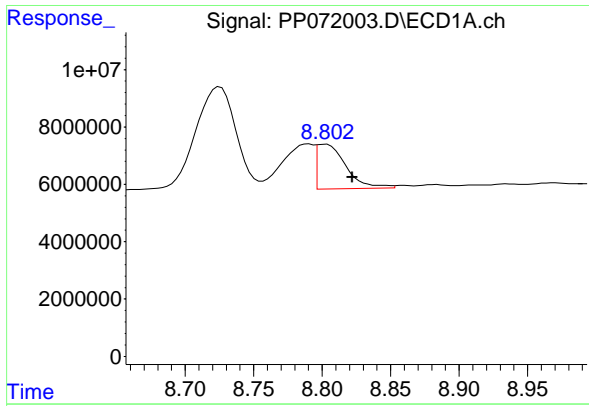
#38 AR-1262-3

R.T.: 8.725 min
 Delta R.T.: -0.012 min
 Response: 77514364
 Conc: 423.86 ng/ml



#38 AR-1262-3

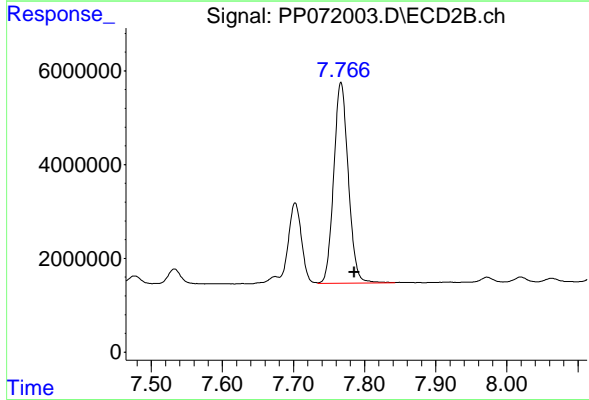
R.T.: 7.702 min
 Delta R.T.: -0.019 min
 Response: 21994943
 Conc: 290.58 ng/ml



#39 AR-1262-4

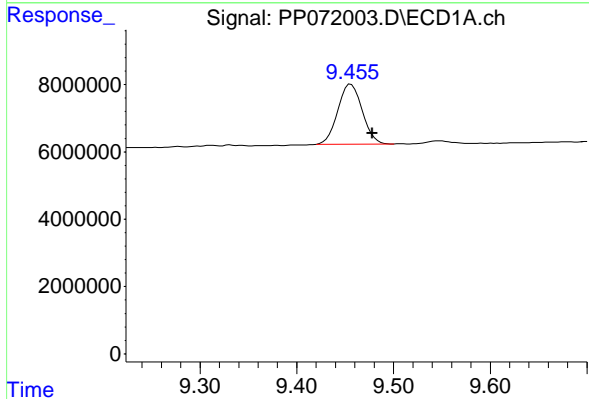
R.T.: 8.802 min
 Delta R.T.: -0.020 min
 Response: 23176029
 Conc: 172.68 ng/ml

Instrument :
 ECD_P
 ClientSampleId :
 AR1660CCC500



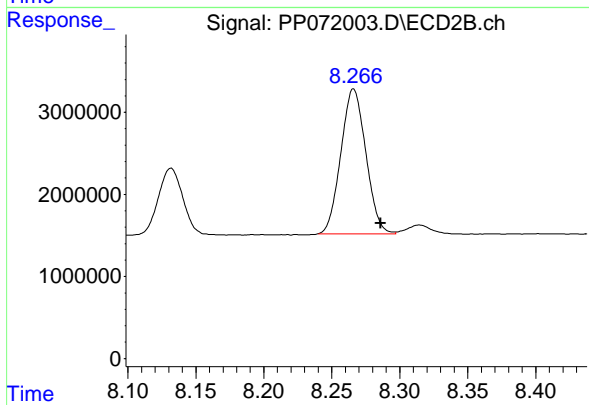
#39 AR-1262-4

R.T.: 7.767 min
 Delta R.T.: -0.019 min
 Response: 60977033
 Conc: 488.50 ng/ml



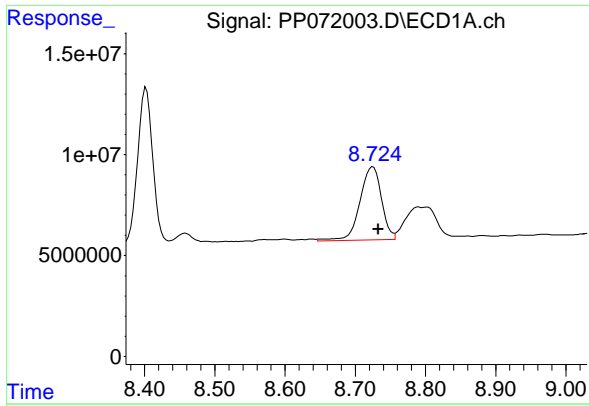
#40 AR-1262-5

R.T.: 9.456 min
 Delta R.T.: -0.022 min
 Response: 31361235
 Conc: 355.72 ng/ml



#40 AR-1262-5

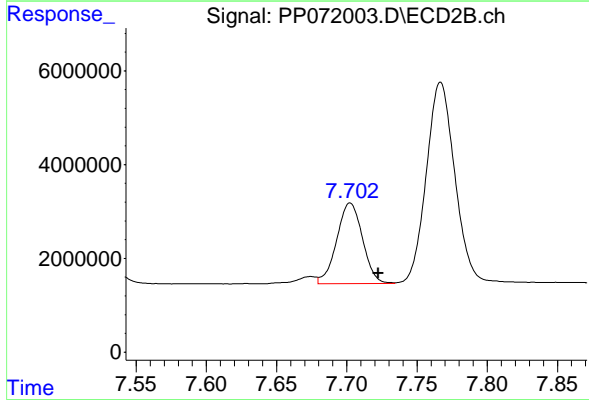
R.T.: 8.266 min
 Delta R.T.: -0.020 min
 Response: 22637252
 Conc: 407.93 ng/ml



#41 AR-1268-1

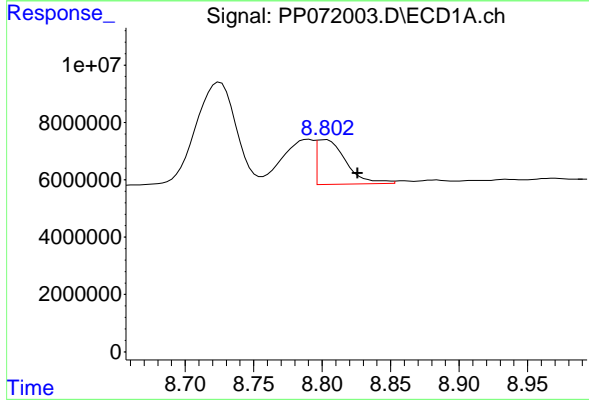
R.T.: 8.725 min
Delta R.T.: -0.007 min
Response: 77514364
Conc: 249.50 ng/ml

Instrument :
ECD_P
ClientSampleId :
AR1660CCC500



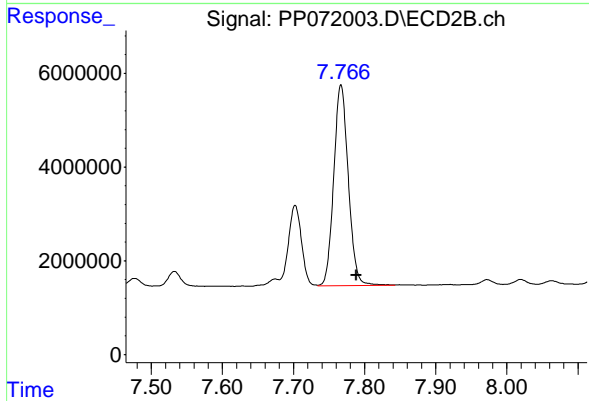
#41 AR-1268-1

R.T.: 7.702 min
Delta R.T.: -0.020 min
Response: 21994943
Conc: 110.14 ng/ml



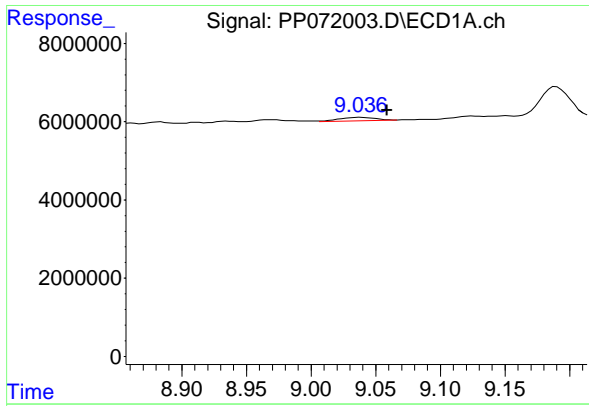
#42 AR-1268-2

R.T.: 8.802 min
Delta R.T.: -0.024 min
Response: 23176029
Conc: 89.92 ng/ml



#42 AR-1268-2

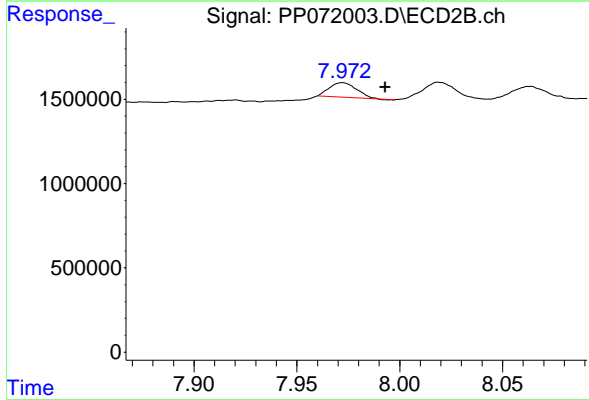
R.T.: 7.767 min
Delta R.T.: -0.022 min
Response: 60977033
Conc: 360.75 ng/ml



#43 AR-1268-3

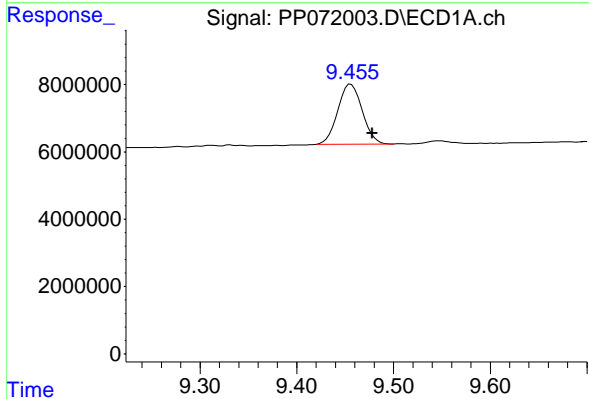
R.T.: 9.038 min
 Delta R.T.: -0.021 min
 Response: 1726961
 Conc: 7.75 ng/ml

Instrument :
 ECD_P
 ClientSampleId :
 AR1660CCC500



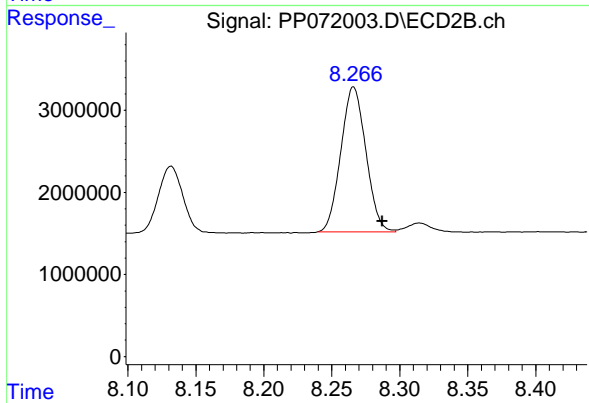
#43 AR-1268-3

R.T.: 7.972 min
 Delta R.T.: -0.021 min
 Response: 793624
 Conc: 5.71 ng/ml



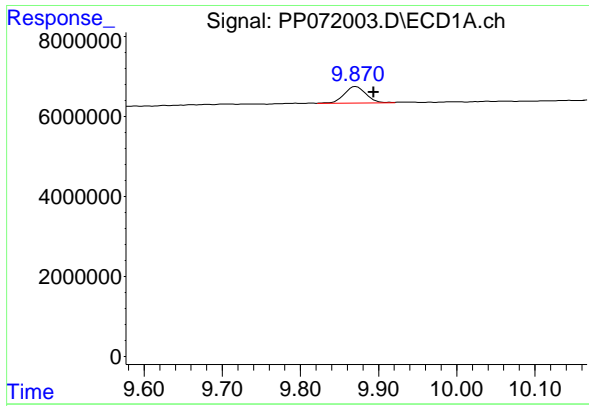
#44 AR-1268-4

R.T.: 9.456 min
 Delta R.T.: -0.022 min
 Response: 31361235
 Conc: 333.42 ng/ml



#44 AR-1268-4

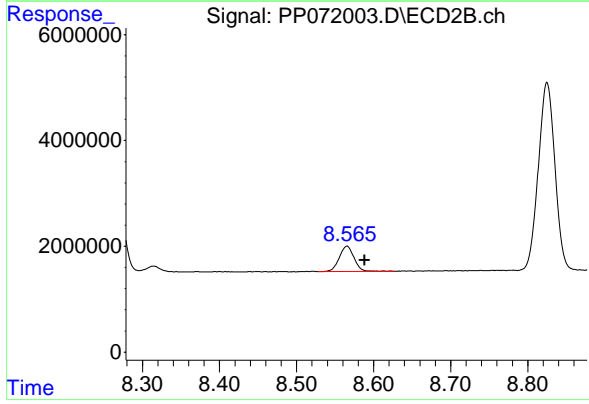
R.T.: 8.266 min
 Delta R.T.: -0.021 min
 Response: 22637252
 Conc: 372.34 ng/ml



#45 AR-1268-5

R.T.: 9.871 min
 Delta R.T.: -0.023 min
 Response: 7979140
 Conc: 13.34 ng/ml

Instrument :
 ECD_P
 ClientSampleId :
 AR1660CCC500



#45 AR-1268-5

R.T.: 8.566 min
 Delta R.T.: -0.023 min
 Response: 6375485
 Conc: 17.08 ng/ml