

Data Path : Z:\pestpcbsrv\HPCHEM1\ECD_P\Data\PP051325\
 Data File : PP072026.D
 Signal(s) : Signal #1: ECD1A.ch Signal #2: ECD2B.ch
 Acq On : 13 May 2025 19:18
 Operator : YP\AJ
 Sample : Q2014-05
 Misc :
 ALS Vial : 20 Sample Multiplier: 1

Instrument :
 ECD_P
 ClientSampleId :
 MOO-25-0148

Integration File signal 1: autoint1.e
 Integration File signal 2: autoint2.e
 Quant Time: May 13 22:57:31 2025
 Quant Method : Z:\pestpcbsrv\HPCHEM1\ECD_P\methods\PP042225.M
 Quant Title : GC EXTRACTABLES
 QLast Update : Wed Apr 23 05:02:06 2025
 Response via : Initial Calibration
 Integrator: ChemStation

Volume Inj. : 2 µl
 Signal #1 Phase : ZB-MR2 Signal #2 Phase: ZB-MR2
 Signal #1 Info : 30Mx0.32mmx 0.50µ Signal #2 Info : 30M x 0.32mm x 0.25µm

Compound	RT#1	RT#2	Resp#1	Resp#2	ng/ml	ng/ml

System Monitoring Compounds						
1) SA Tetrachlo...	4.532	3.845f	13051690	14030627	6.583	9.960 #
2) SA Decachlor...	10.212	8.826	16518200	11913425	11.408	13.583
Target Compounds						
3) L1 AR-1016-1	5.626f	4.916	59559243	1560103	888.283	29.143 #
4) L1 AR-1016-2	5.739f	4.916	12914149	1560103	125.834	20.430 #
5) L1 AR-1016-3	5.739	5.113	12914149	2141016	209.485	50.722 #
6) L1 AR-1016-4	5.846	5.113	10306289	2141016	200.910	62.084 #
7) L1 AR-1016-5	6.165	5.369	40526525	3192467	840.130	71.826 #
8) L2 AR-1221-1	4.696	0.000	21144780	0	876.764	N.D. #
9) L2 AR-1221-2	4.798	4.113	284335	16205824	15.782	978.511 #
10) L2 AR-1221-3	4.879	4.207	355135	855437	6.273	17.646 #
11) L3 AR-1232-1	4.879	4.207	355135	855437	7.907	22.325 #
12) L3 AR-1232-2	5.420	4.916	6034179	1560103	262.206	40.854 #
13) L3 AR-1232-3	5.739f	5.113	12914149	2141016	273.503	101.109 #
14) L3 AR-1232-4	5.846	5.164	10306289	889031	444.632	47.951 #
15) L3 AR-1232-5	5.919	5.369	27916042	3192467	1729.006	160.411 #
16) L4 AR-1242-1	5.626f	4.916	59559243	1560103	1087.416	33.737 #
17) L4 AR-1242-2	5.739f	4.916	12914149	1560103	151.966	23.630 #
18) L4 AR-1242-3	5.739	5.113	12914149	2141016	252.608	58.741 #
19) L4 AR-1242-4	5.846	5.164	10306289	889031	244.175	24.895 #
20) L4 AR-1242-5	6.541f	5.685	42573292	1280253	919.698	29.426 #
21) L5 AR-1248-1	5.626f	4.916	59559243	1560103	1387.070	43.208 #
22) L5 AR-1248-2	5.919	5.113	27916042	2141016	461.938	43.728 #
23) L5 AR-1248-3	6.165	5.164	40526525	889031	606.826	17.403 #
24) L5 AR-1248-4	6.541	5.369	42573292	3192467	503.166	52.631 #
25) L5 AR-1248-5	6.541f	5.737	42573292	993546	535.862	17.045 #
26) L6 AR-1254-1	6.541	5.685	42573292	1280253	519.496	14.007 #
27) L6 AR-1254-2	6.707	5.846	32500728	620354	255.758	7.881 #
28) L6 AR-1254-3	7.108	6.242	18967222	351657	148.443	2.967 #
29) L6 AR-1254-4	7.420f	6.487	4853765	323940	41.304	4.198 #
30) L6 AR-1254-5	7.799	6.890	8414512	580376	78.107	5.720 #
31) L7 AR-1260-1	7.234	6.362	4202415	277699	43.764	3.841 #
32) L7 AR-1260-2	7.459f	6.575	3579321	1035456	25.017	11.839 #
33) L7 AR-1260-3	7.882	6.725	6380125	610982	56.913	7.794 #
34) L7 AR-1260-4	8.089	7.181	1556039	1102878	13.787	17.475 #
35) L7 AR-1260-5	8.383f	7.426	12674535	936146	55.940	6.209 #
36) L8 AR-1262-1	8.089	6.921	1556039	295306	10.769	2.599 #
37) L8 AR-1262-2	8.383f	7.181	12674535	1102878	46.226	11.944 #
38) L8 AR-1262-3	8.744	7.736	28776393	236463	157.353	3.124 #
39) L8 AR-1262-4	8.811	7.767	12355733	483643	92.062	3.875 #
40) L8 AR-1262-5	9.454	8.305	1410766	282586	16.002	5.092 #
41) L9 AR-1268-1	8.744	7.736	28776393	236463	92.623	1.184 #

Data Path : Z:\pestpcbsrv\HPCHEM1\ECD_P\Data\PP051325\
 Data File : PP072026.D
 Signal(s) : Signal #1: ECD1A.ch Signal #2: ECD2B.ch
 Acq On : 13 May 2025 19:18
 Operator : YP\AJ
 Sample : Q2014-05
 Misc :
 ALS Vial : 20 Sample Multiplier: 1

Instrument :
 ECD_P
 ClientSampleId :
 MOO-25-0148

Integration File signal 1: autoint1.e
 Integration File signal 2: autoint2.e
 Quant Time: May 13 22:57:31 2025
 Quant Method : Z:\pestpcbsrv\HPCHEM1\ECD_P\methods\PP042225.M
 Quant Title : GC EXTRACTABLES
 QLast Update : Wed Apr 23 05:02:06 2025
 Response via : Initial Calibration
 Integrator: ChemStation

Volume Inj. : 2 µl
 Signal #1 Phase : ZB-MR1 Signal #2 Phase: ZB-MR2
 Signal #1 Info : 30Mx0.32mmx 0.50µ Signal #2 Info : 30M x 0.32mm x 0.25µm

	Compound	RT#1	RT#2	Resp#1	Resp#2	ng/ml	ng/ml
42)	L9 AR-1268-2	8.811	7.767	12355733	483643	47.937	2.861 #
43)	L9 AR-1268-3	9.053	7.972	2704970	247155	12.135	1.777 #
44)	L9 AR-1268-4	9.454	8.305	1410766	282586	14.999	4.648 #
45)	L9 AR-1268-5	9.898	8.564	3200097	133787	5.349	0.358 #

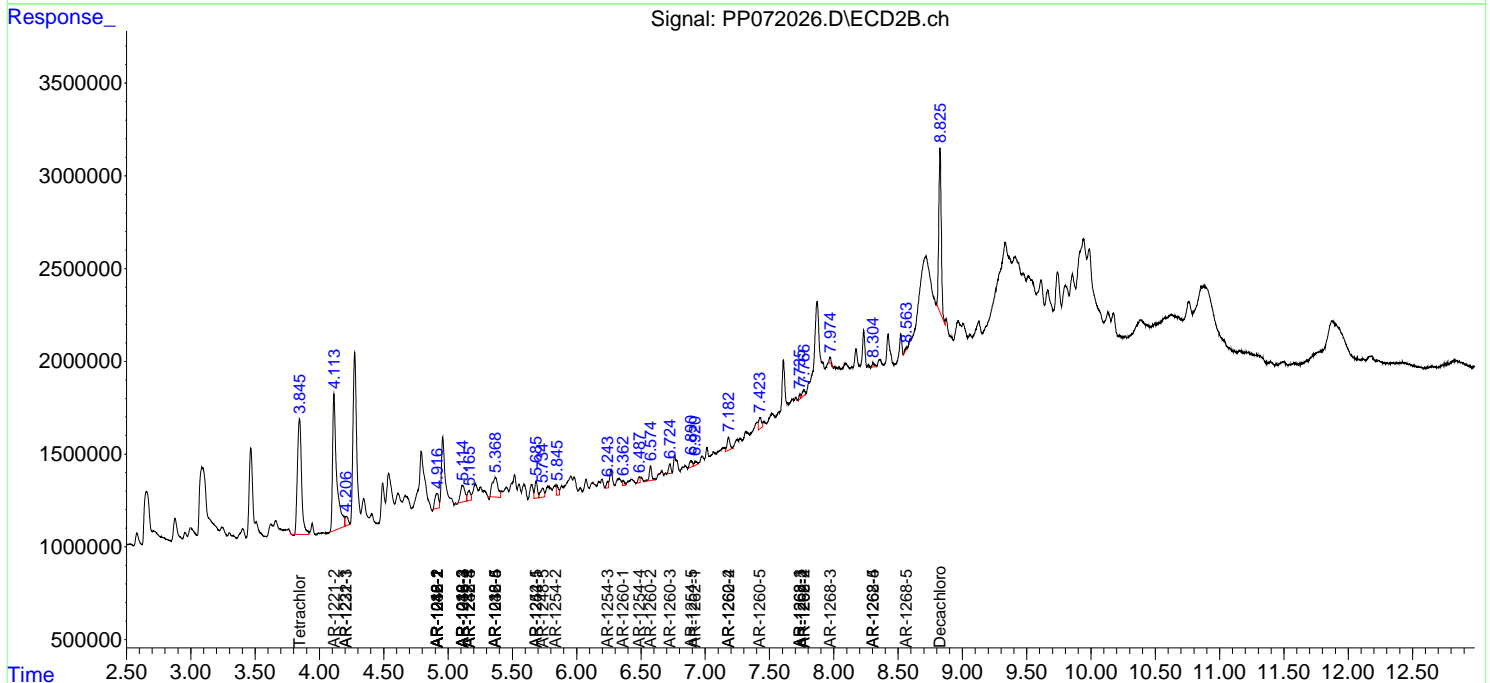
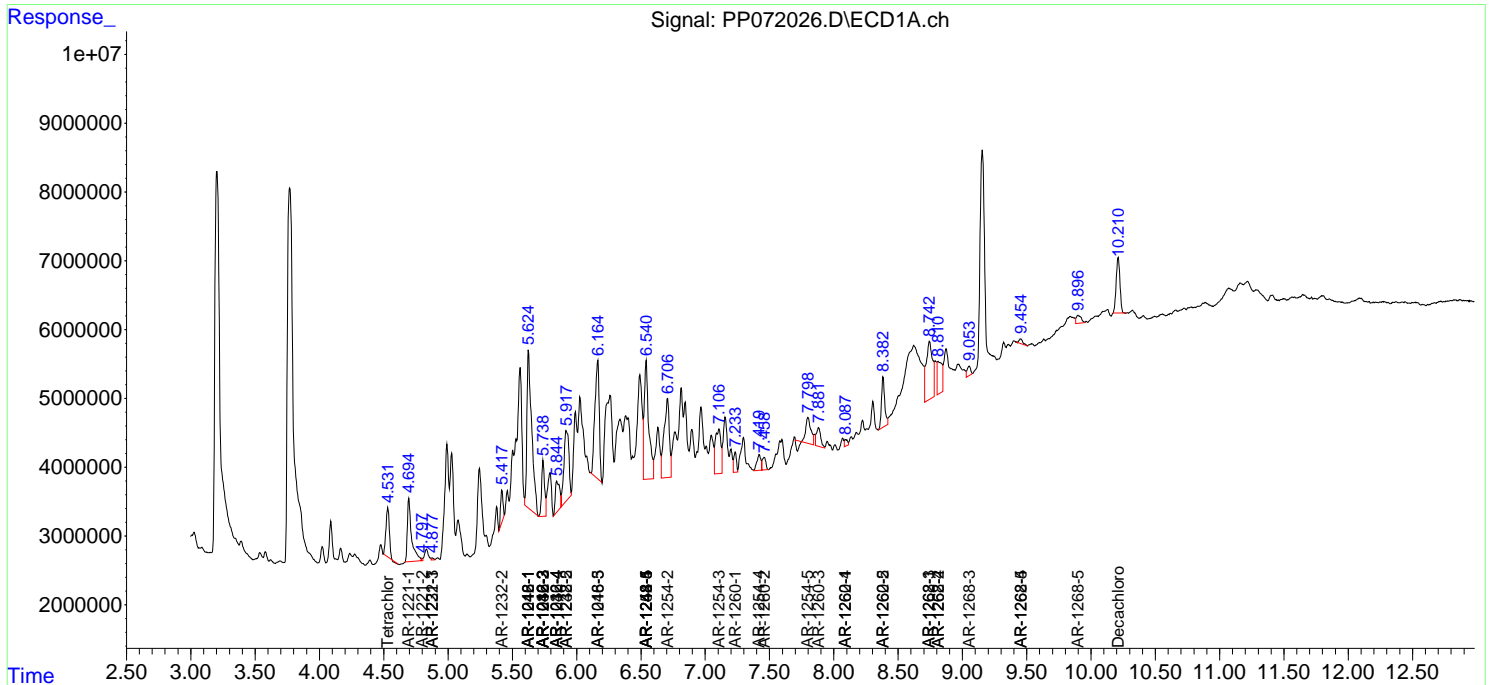
(f)=RT Delta > 1/2 Window (#)=Amounts differ by > 25% (m)=manual int.

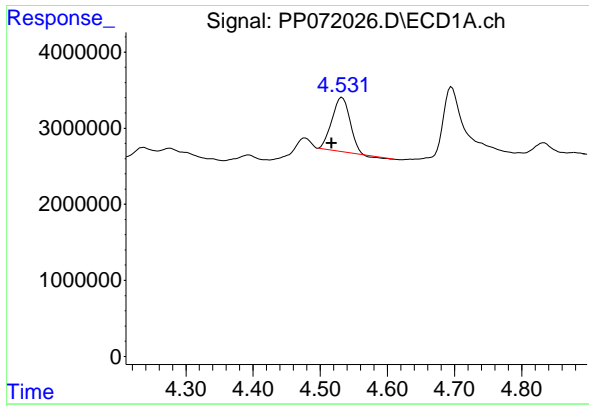
Data Path : Z:\pestpcbsrv\HPCHEM1\ECD_P\Data\PP051325\
 Data File : PP072026.D
 Signal(s) : Signal #1: ECD1A.ch Signal #2: ECD2B.ch
 Acq On : 13 May 2025 19:18
 Operator : YP\AJ
 Sample : Q2014-05
 Misc :
 ALS Vial : 20 Sample Multiplier: 1

Instrument :
 ECD_P
 ClientSampleId :
 MOO-25-0148

Integration File signal 1: autoint1.e
 Integration File signal 2: autoint2.e
 Quant Time: May 13 22:57:31 2025
 Quant Method : Z:\pestpcbsrv\HPCHEM1\ECD_P\methods\PP042225.M
 Quant Title : GC EXTRACTABLES
 QLast Update : Wed Apr 23 05:02:06 2025
 Response via : Initial Calibration
 Integrator: ChemStation

Volume Inj. : 2 µl
 Signal #1 Phase : ZB-MR1 Signal #2 Phase: ZB-MR2
 Signal #1 Info : 30Mx0.32mmx 0.50µm Signal #2 Info : 30M x 0.32mm x 0.25µm

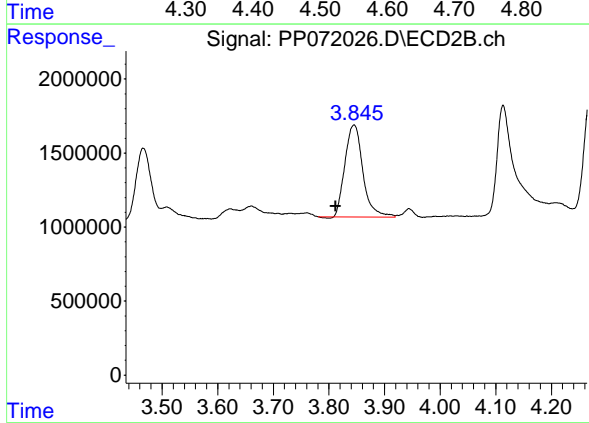




#1 Tetrachloro-m-xylene

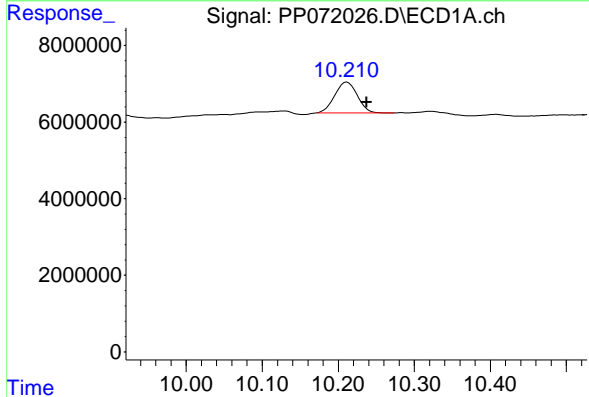
R.T.: 4.532 min
 Delta R.T.: 0.015 min
 Response: 13051690
 Conc: 6.58 ng/ml

Instrument : ECD_P
 ClientSampleId : MOO-25-0148



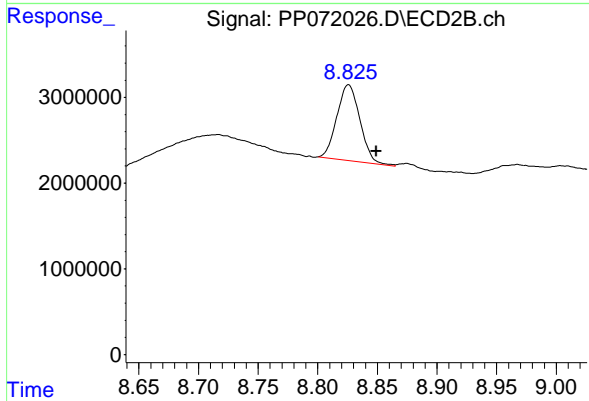
#1 Tetrachloro-m-xylene

R.T.: 3.845 min
 Delta R.T.: 0.033 min
 Response: 14030627
 Conc: 9.96 ng/ml



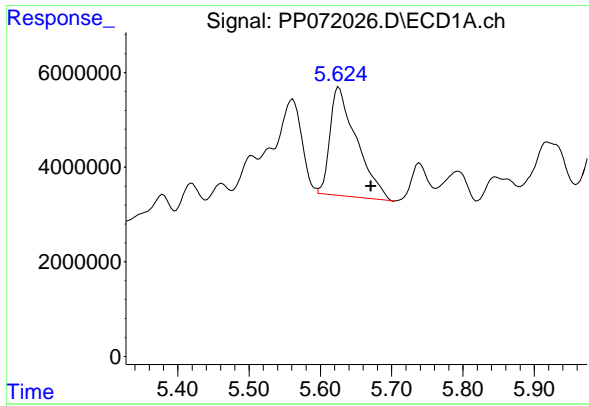
#2 Decachlorobiphenyl

R.T.: 10.212 min
 Delta R.T.: -0.026 min
 Response: 16518200
 Conc: 11.41 ng/ml



#2 Decachlorobiphenyl

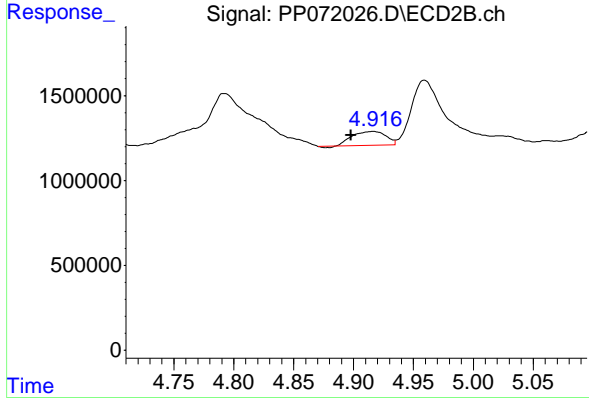
R.T.: 8.826 min
 Delta R.T.: -0.023 min
 Response: 11913425
 Conc: 13.58 ng/ml



#3 AR-1016-1

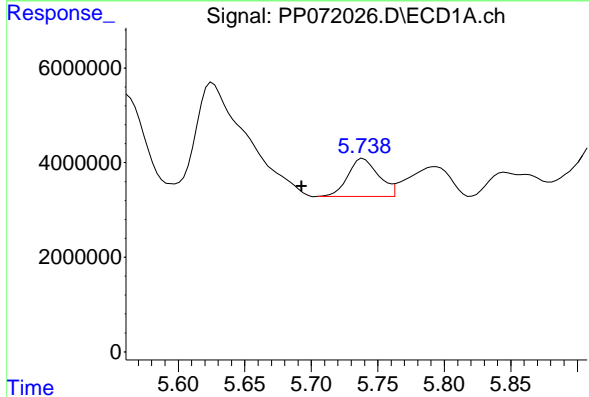
R.T.: 5.626 min
 Delta R.T.: -0.045 min
 Response: 59559243
 Conc: 888.28 ng/ml

Instrument : ECD_P
 ClientSampleId : MOO-25-0148



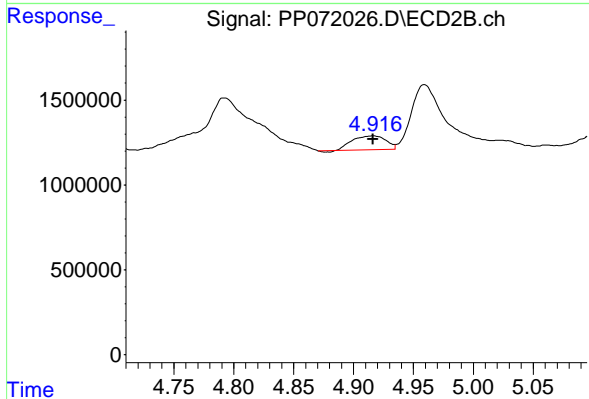
#3 AR-1016-1

R.T.: 4.916 min
 Delta R.T.: 0.019 min
 Response: 1560103
 Conc: 29.14 ng/ml



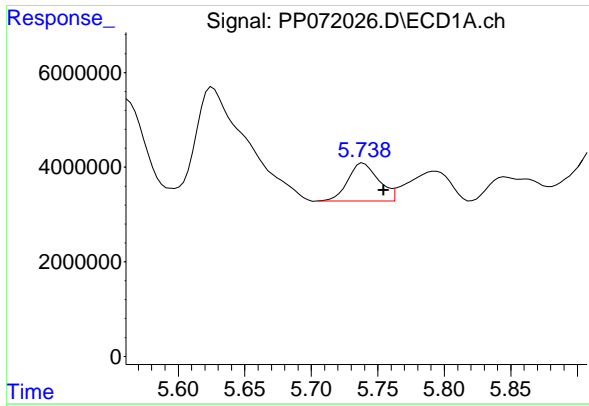
#4 AR-1016-2

R.T.: 5.739 min
 Delta R.T.: 0.046 min
 Response: 12914149
 Conc: 125.83 ng/ml



#4 AR-1016-2

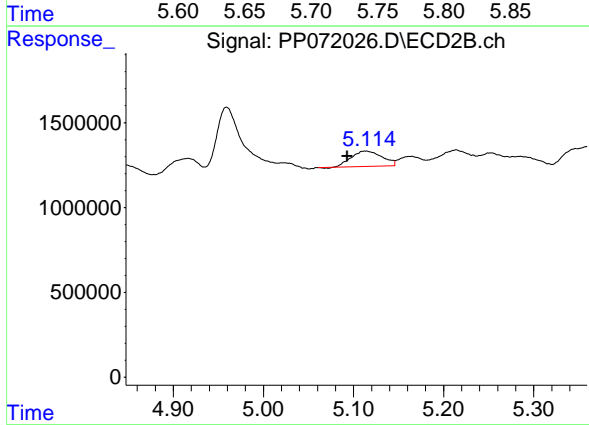
R.T.: 4.916 min
 Delta R.T.: 0.000 min
 Response: 1560103
 Conc: 20.43 ng/ml



#5 AR-1016-3

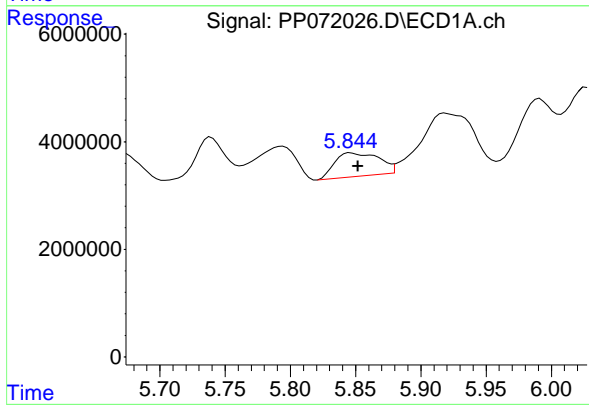
R.T.: 5.739 min
 Delta R.T.: -0.015 min
 Response: 12914149
 Conc: 209.49 ng/ml

Instrument : ECD_P
 ClientSampleId : MOO-25-0148



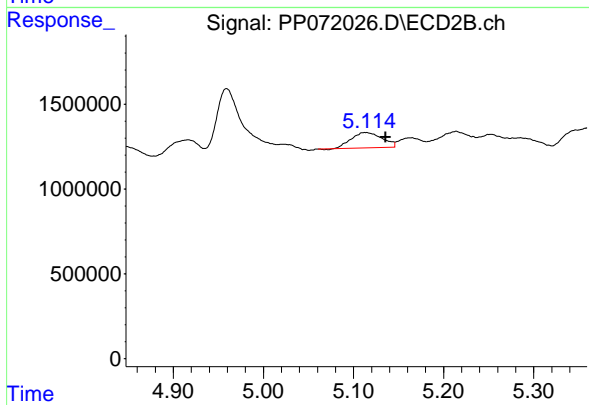
#5 AR-1016-3

R.T.: 5.113 min
 Delta R.T.: 0.020 min
 Response: 2141016
 Conc: 50.72 ng/ml



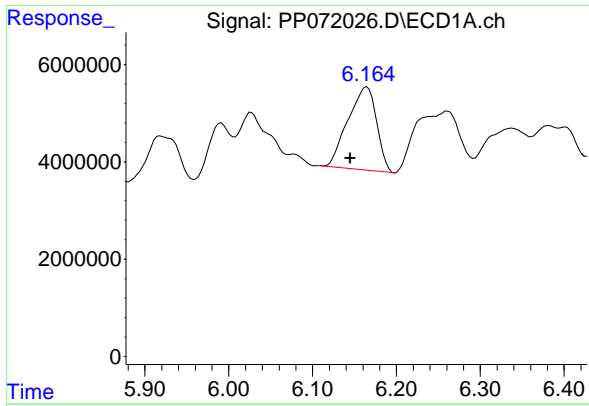
#6 AR-1016-4

R.T.: 5.846 min
 Delta R.T.: -0.006 min
 Response: 10306289
 Conc: 200.91 ng/ml



#6 AR-1016-4

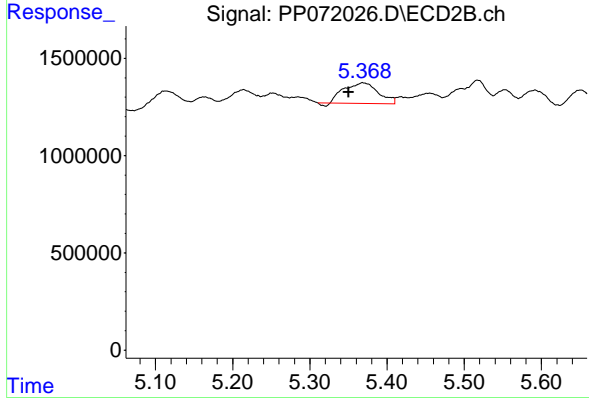
R.T.: 5.113 min
 Delta R.T.: -0.022 min
 Response: 2141016
 Conc: 62.08 ng/ml



#7 AR-1016-5

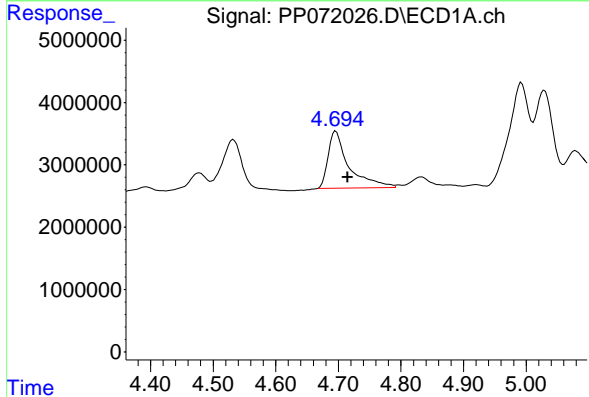
R.T.: 6.165 min
 Delta R.T.: 0.020 min
 Response: 40526525
 Conc: 840.13 ng/ml

Instrument : ECD_P
 ClientSampleId : MOO-25-0148



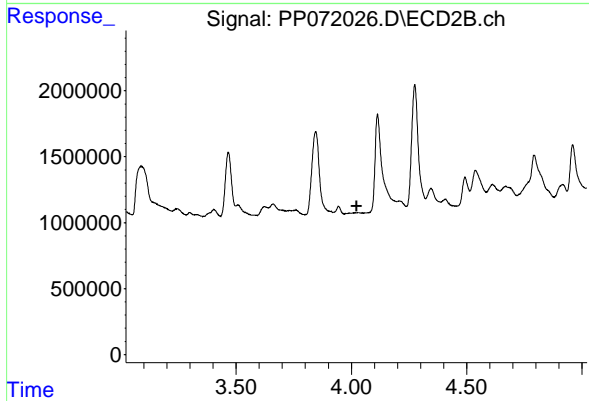
#7 AR-1016-5

R.T.: 5.369 min
 Delta R.T.: 0.019 min
 Response: 3192467
 Conc: 71.83 ng/ml



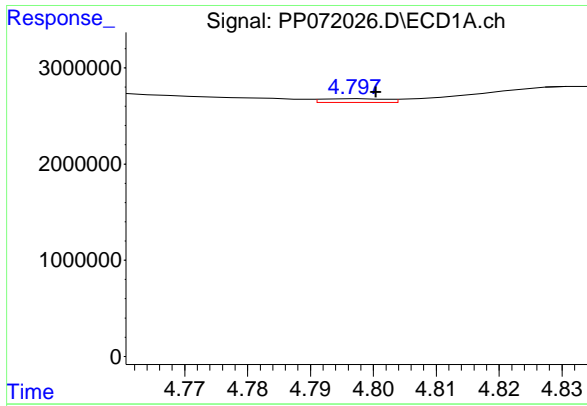
#8 AR-1221-1

R.T.: 4.696 min
 Delta R.T.: -0.019 min
 Response: 21144780
 Conc: 876.76 ng/ml



#8 AR-1221-1

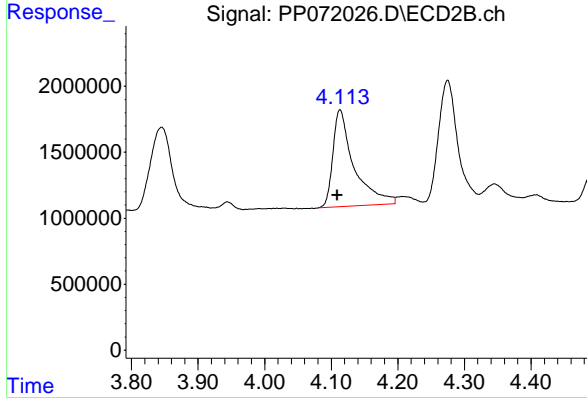
R.T.: 0.000 min
 Exp R.T. : 4.022 min
 Response: 0
 Conc: N.D.



#9 AR-1221-2

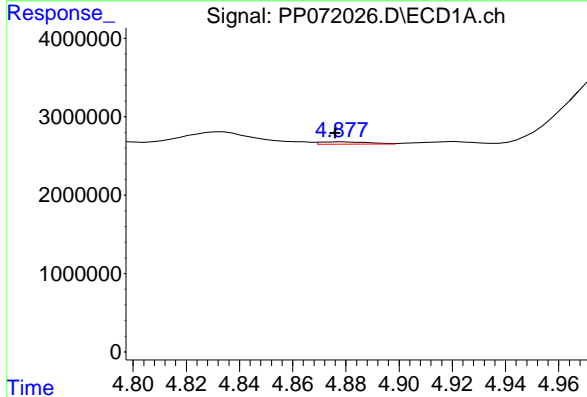
R.T.: 4.798 min
 Delta R.T.: -0.003 min
 Response: 284335
 Conc: 15.78 ng/ml

Instrument :
 ECD_P
 ClientSampleId :
 MOO-25-0148



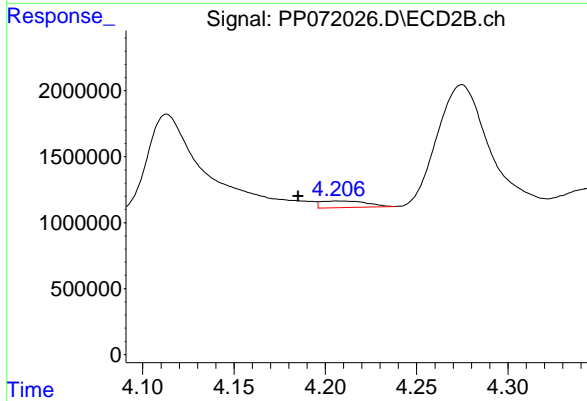
#9 AR-1221-2

R.T.: 4.113 min
 Delta R.T.: 0.004 min
 Response: 16205824
 Conc: 978.51 ng/ml



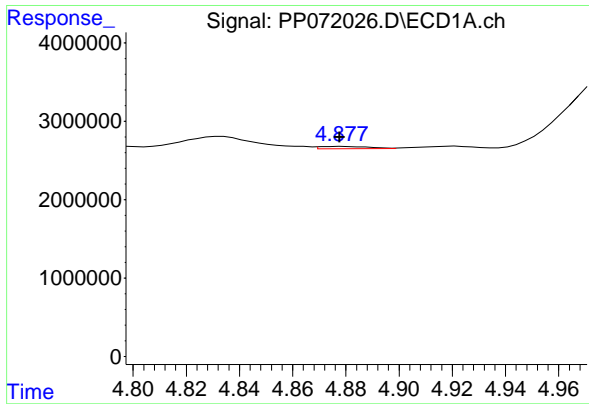
#10 AR-1221-3

R.T.: 4.879 min
 Delta R.T.: 0.003 min
 Response: 355135
 Conc: 6.27 ng/ml



#10 AR-1221-3

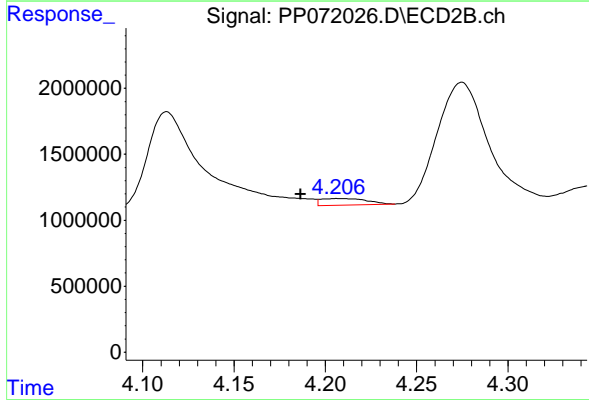
R.T.: 4.207 min
 Delta R.T.: 0.022 min
 Response: 855437
 Conc: 17.65 ng/ml



#11 AR-1232-1

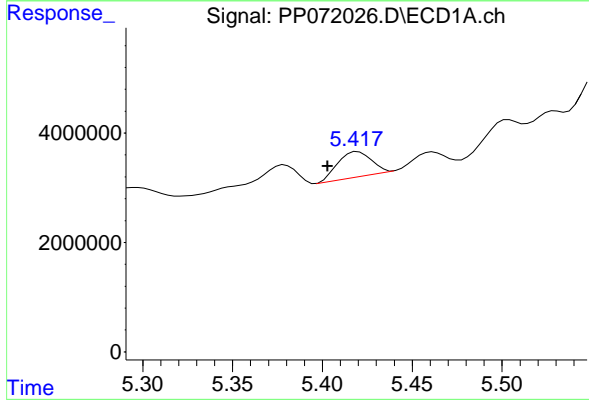
R.T.: 4.879 min
 Delta R.T.: 0.001 min
 Response: 355135
 Conc: 7.91 ng/ml

Instrument : ECD_P
 ClientSampleId : MOO-25-0148



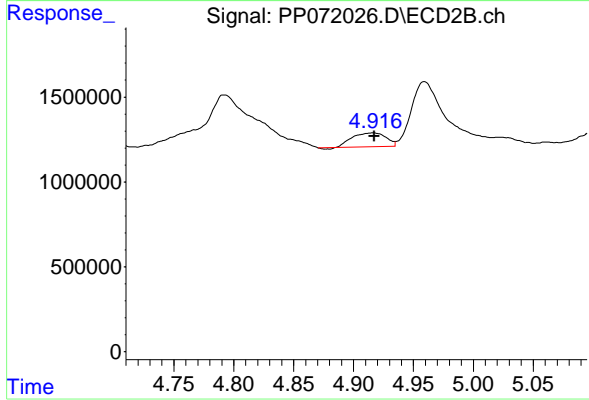
#11 AR-1232-1

R.T.: 4.207 min
 Delta R.T.: 0.020 min
 Response: 855437
 Conc: 22.32 ng/ml



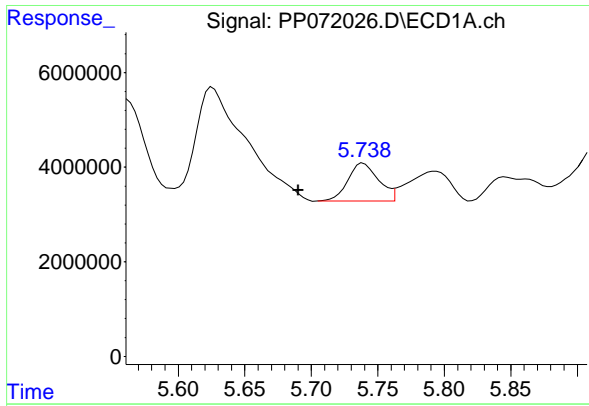
#12 AR-1232-2

R.T.: 5.420 min
 Delta R.T.: 0.017 min
 Response: 6034179
 Conc: 262.21 ng/ml



#12 AR-1232-2

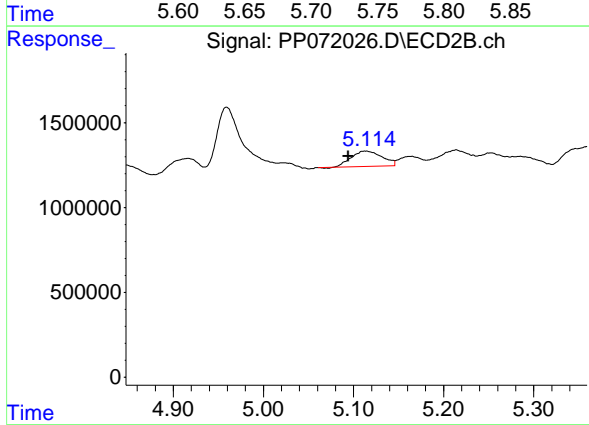
R.T.: 4.916 min
 Delta R.T.: 0.000 min
 Response: 1560103
 Conc: 40.85 ng/ml



#13 AR-1232-3

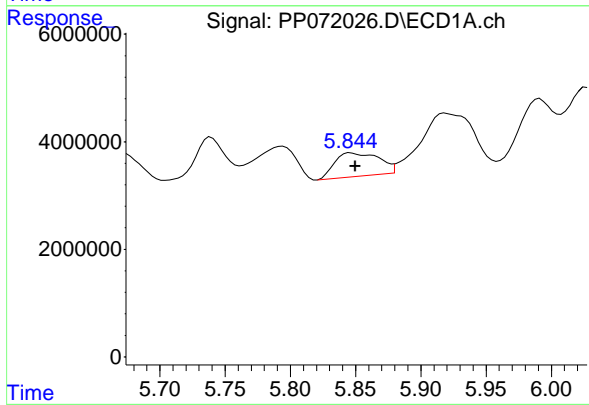
R.T.: 5.739 min
 Delta R.T.: 0.049 min
 Response: 12914149
 Conc: 273.50 ng/ml

Instrument : ECD_P
 Client SampleId : MOO-25-0148



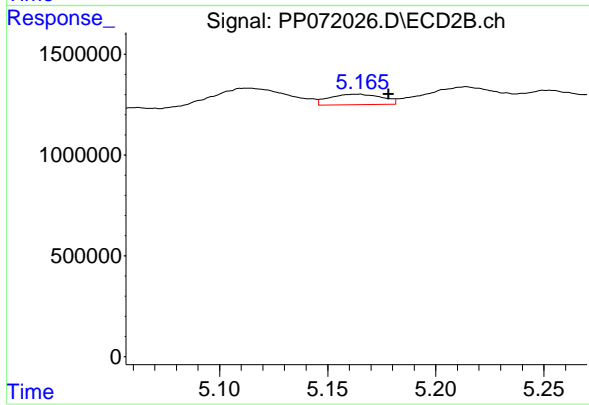
#13 AR-1232-3

R.T.: 5.113 min
 Delta R.T.: 0.019 min
 Response: 2141016
 Conc: 101.11 ng/ml



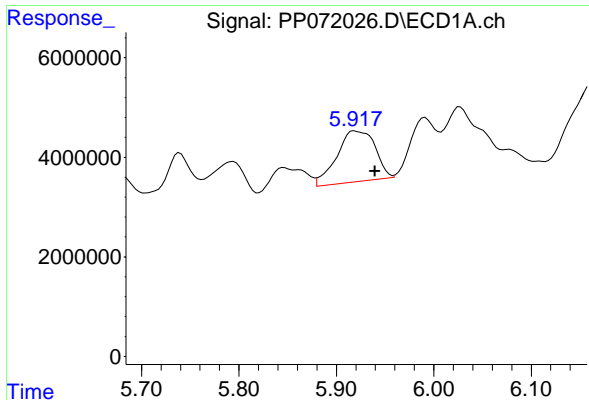
#14 AR-1232-4

R.T.: 5.846 min
 Delta R.T.: -0.003 min
 Response: 10306289
 Conc: 444.63 ng/ml



#14 AR-1232-4

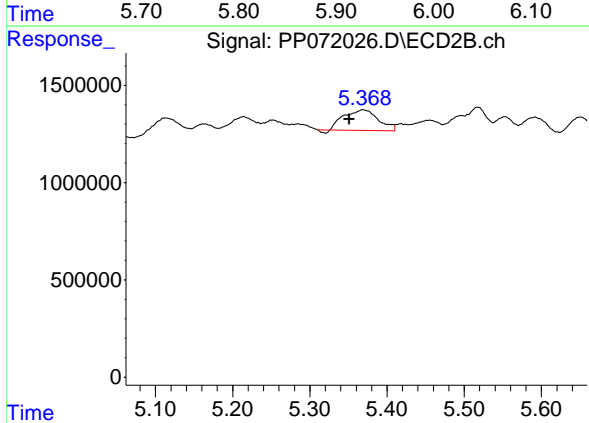
R.T.: 5.164 min
 Delta R.T.: -0.015 min
 Response: 889031
 Conc: 47.95 ng/ml



#15 AR-1232-5

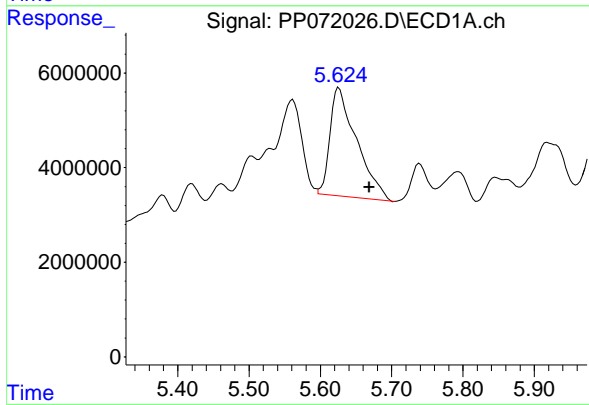
R.T.: 5.919 min
 Delta R.T.: -0.020 min
 Response: 27916042
 Conc: 1729.01 ng/ml

Instrument :
 ECD_P
 ClientSampleId :
 MOO-25-0148



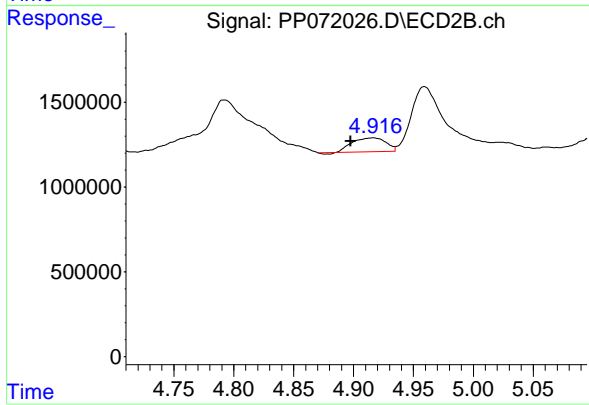
#15 AR-1232-5

R.T.: 5.369 min
 Delta R.T.: 0.017 min
 Response: 3192467
 Conc: 160.41 ng/ml



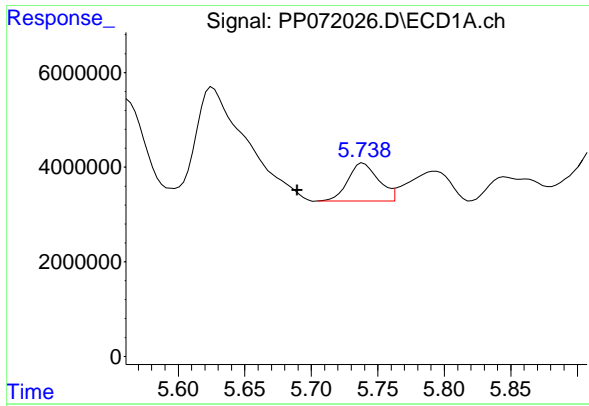
#16 AR-1242-1

R.T.: 5.626 min
 Delta R.T.: -0.043 min
 Response: 59559243
 Conc: 1087.42 ng/ml



#16 AR-1242-1

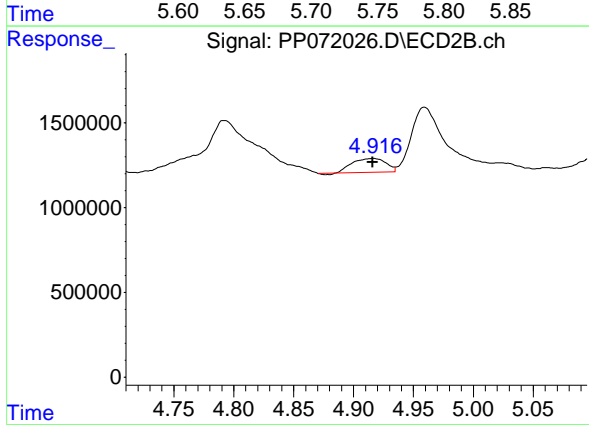
R.T.: 4.916 min
 Delta R.T.: 0.019 min
 Response: 1560103
 Conc: 33.74 ng/ml



#17 AR-1242-2

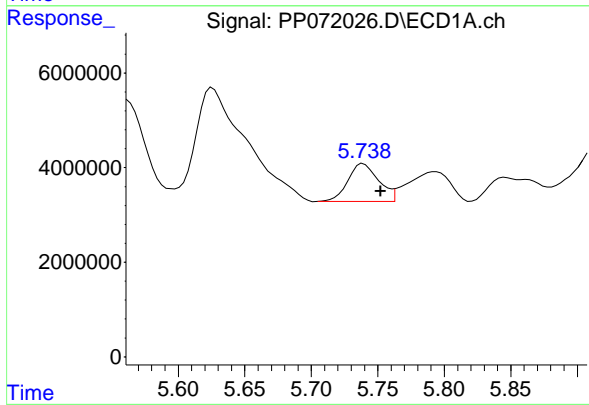
R.T.: 5.739 min
 Delta R.T.: 0.050 min
 Response: 12914149
 Conc: 151.97 ng/ml

Instrument :
 ECD_P
 ClientSampleId :
 MOO-25-0148



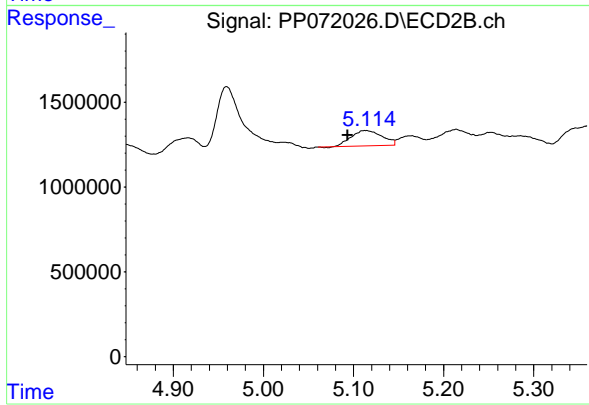
#17 AR-1242-2

R.T.: 4.916 min
 Delta R.T.: 0.000 min
 Response: 1560103
 Conc: 23.63 ng/ml



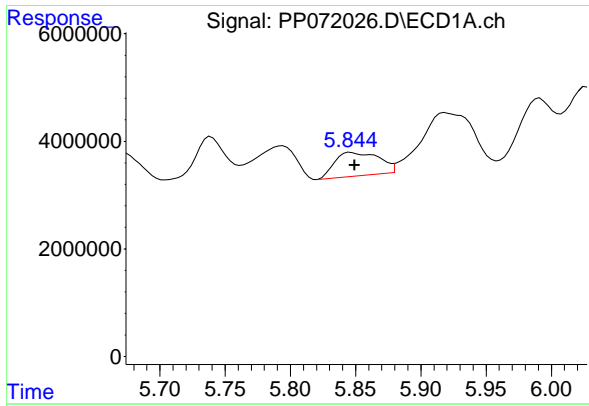
#18 AR-1242-3

R.T.: 5.739 min
 Delta R.T.: -0.013 min
 Response: 12914149
 Conc: 252.61 ng/ml



#18 AR-1242-3

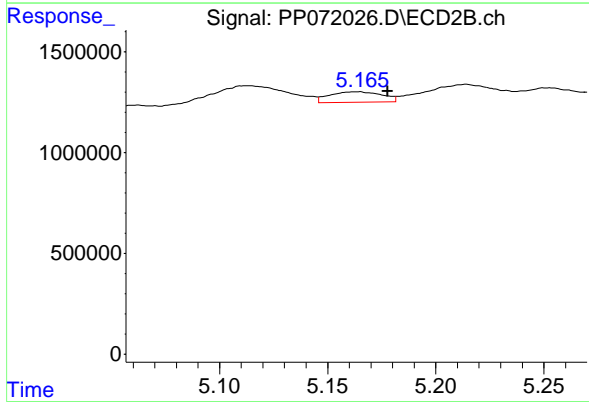
R.T.: 5.113 min
 Delta R.T.: 0.020 min
 Response: 2141016
 Conc: 58.74 ng/ml



#19 AR-1242-4

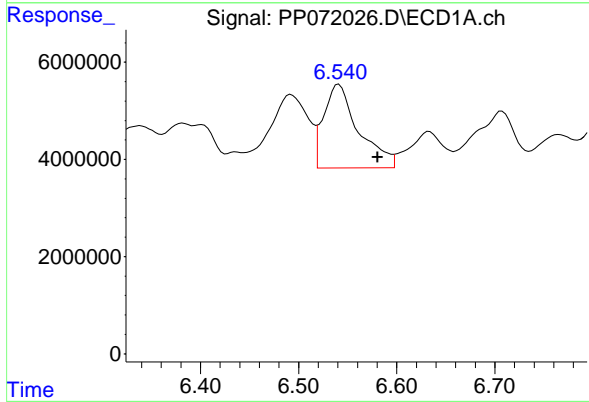
R.T.: 5.846 min
 Delta R.T.: -0.003 min
 Response: 10306289
 Conc: 244.18 ng/ml

Instrument :
 ECD_P
 ClientSampleId :
 MOO-25-0148



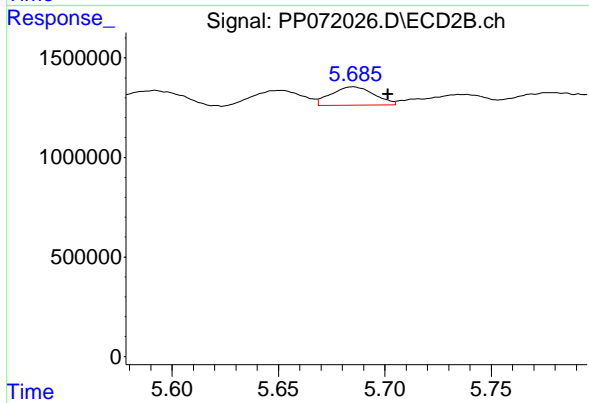
#19 AR-1242-4

R.T.: 5.164 min
 Delta R.T.: -0.014 min
 Response: 889031
 Conc: 24.90 ng/ml



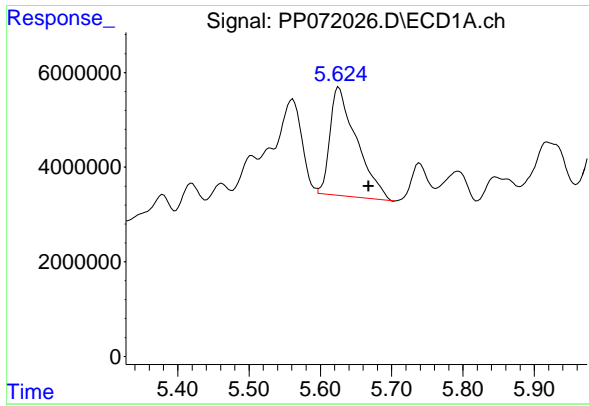
#20 AR-1242-5

R.T.: 6.541 min
 Delta R.T.: -0.039 min
 Response: 42573292
 Conc: 919.70 ng/ml



#20 AR-1242-5

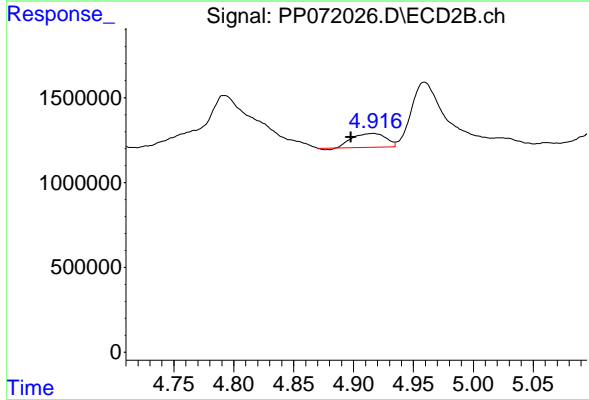
R.T.: 5.685 min
 Delta R.T.: -0.016 min
 Response: 1280253
 Conc: 29.43 ng/ml



#21 AR-1248-1

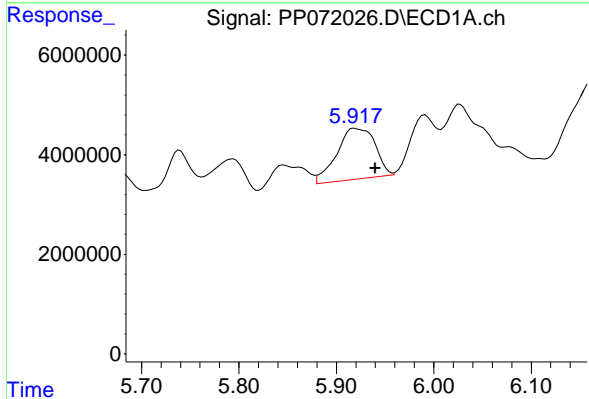
R.T.: 5.626 min
 Delta R.T.: -0.042 min
 Response: 59559243
 Conc: 1387.07 ng/ml

Instrument :
 ECD_P
 ClientSampleId :
 MOO-25-0148



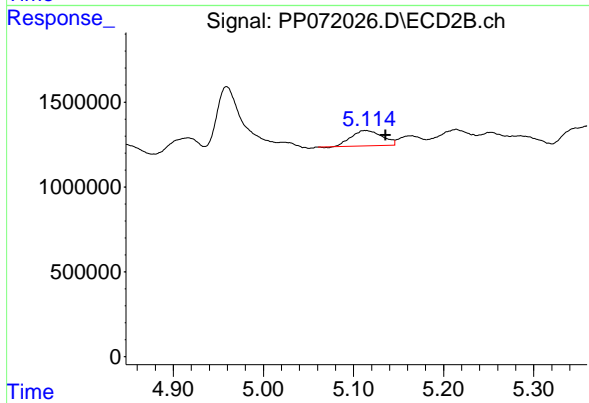
#21 AR-1248-1

R.T.: 4.916 min
 Delta R.T.: 0.018 min
 Response: 1560103
 Conc: 43.21 ng/ml



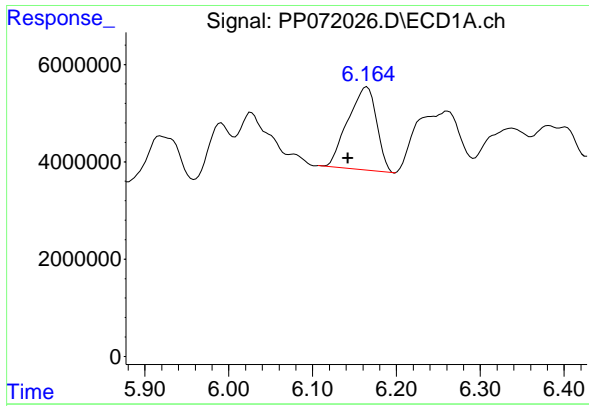
#22 AR-1248-2

R.T.: 5.919 min
 Delta R.T.: -0.021 min
 Response: 27916042
 Conc: 461.94 ng/ml



#22 AR-1248-2

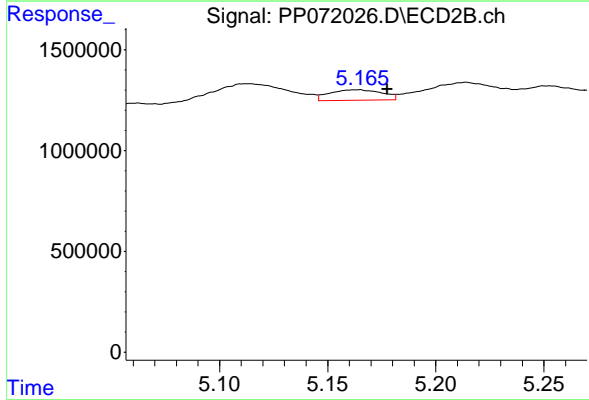
R.T.: 5.113 min
 Delta R.T.: -0.022 min
 Response: 2141016
 Conc: 43.73 ng/ml



#23 AR-1248-3

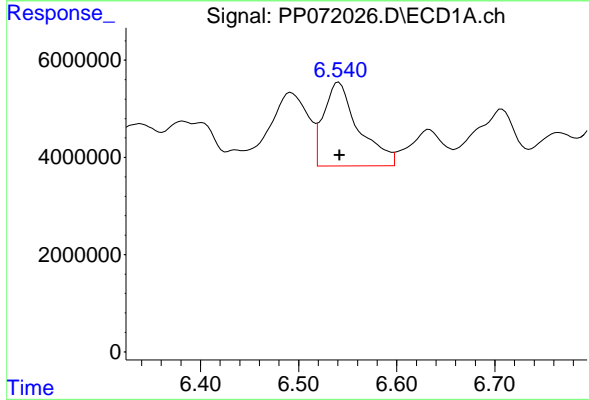
R.T.: 6.165 min
 Delta R.T.: 0.022 min
 Response: 40526525
 Conc: 606.83 ng/ml

Instrument :
 ECD_P
 ClientSampleId :
 MOO-25-0148



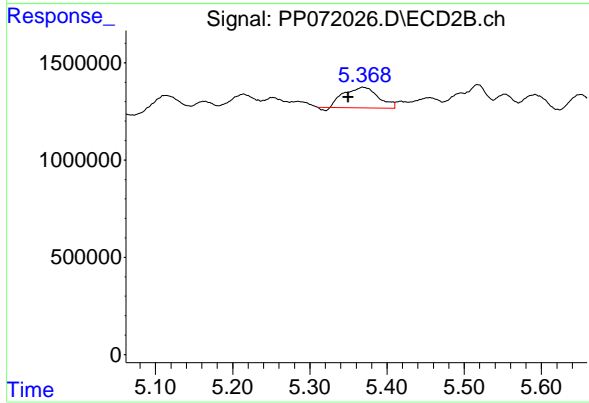
#23 AR-1248-3

R.T.: 5.164 min
 Delta R.T.: -0.014 min
 Response: 889031
 Conc: 17.40 ng/ml



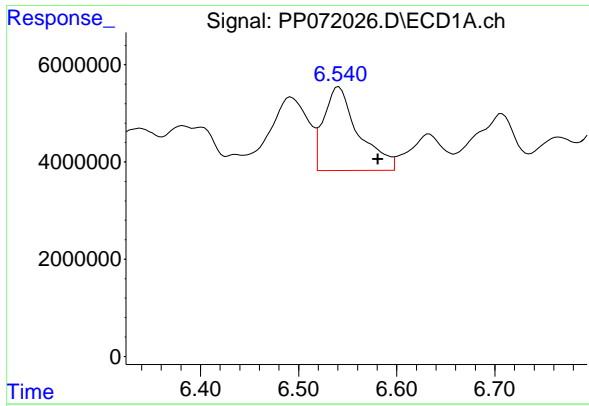
#24 AR-1248-4

R.T.: 6.541 min
 Delta R.T.: 0.000 min
 Response: 42573292
 Conc: 503.17 ng/ml



#24 AR-1248-4

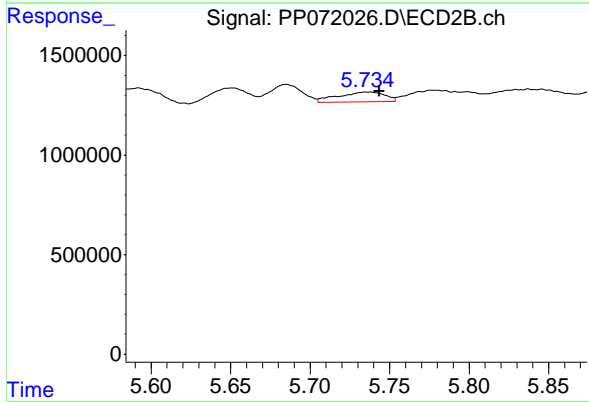
R.T.: 5.369 min
 Delta R.T.: 0.019 min
 Response: 3192467
 Conc: 52.63 ng/ml



#25 AR-1248-5

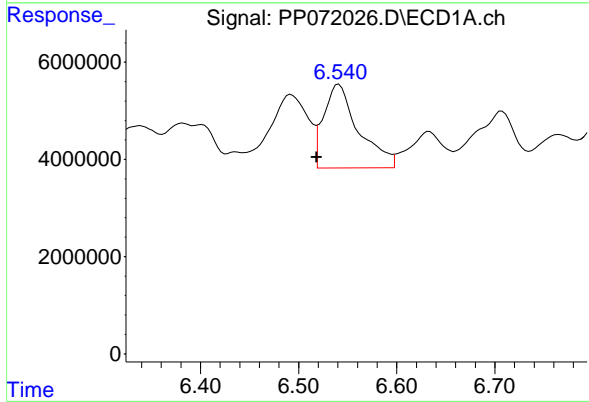
R.T.: 6.541 min
 Delta R.T.: -0.040 min
 Response: 42573292
 Conc: 535.86 ng/ml

Instrument :
 ECD_P
 ClientSampleId :
 MOO-25-0148



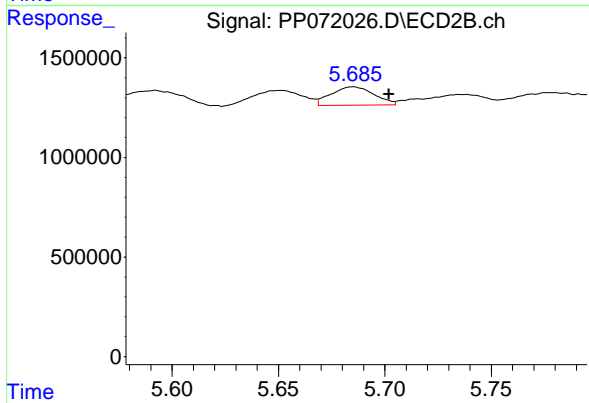
#25 AR-1248-5

R.T.: 5.737 min
 Delta R.T.: -0.007 min
 Response: 993546
 Conc: 17.04 ng/ml



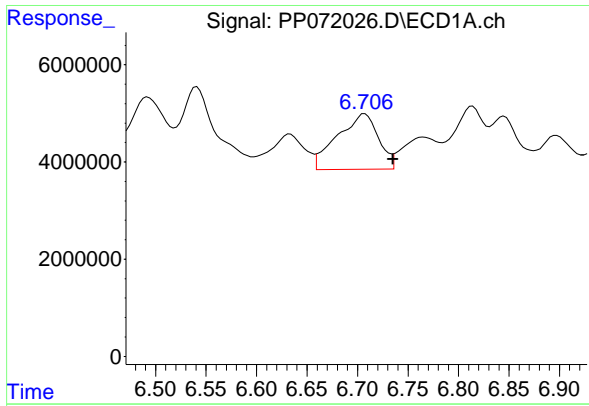
#26 AR-1254-1

R.T.: 6.541 min
 Delta R.T.: 0.023 min
 Response: 42573292
 Conc: 519.50 ng/ml



#26 AR-1254-1

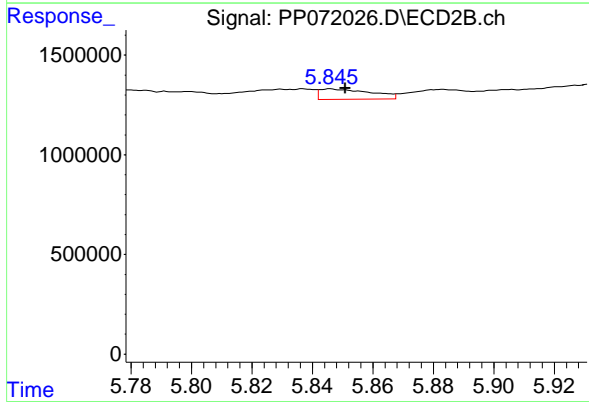
R.T.: 5.685 min
 Delta R.T.: -0.017 min
 Response: 1280253
 Conc: 14.01 ng/ml



#27 AR-1254-2

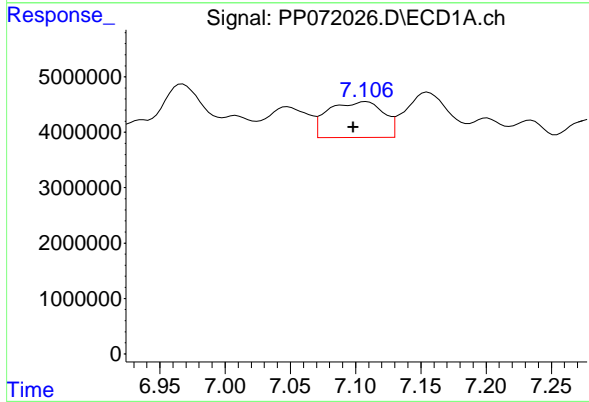
R.T.: 6.707 min
 Delta R.T.: -0.028 min
 Response: 32500728
 Conc: 255.76 ng/ml

Instrument :
 ECD_P
 ClientSampleId :
 MOO-25-0148



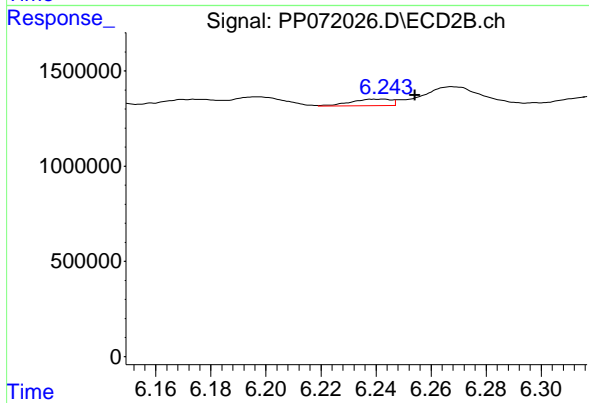
#27 AR-1254-2

R.T.: 5.846 min
 Delta R.T.: -0.005 min
 Response: 620354
 Conc: 7.88 ng/ml



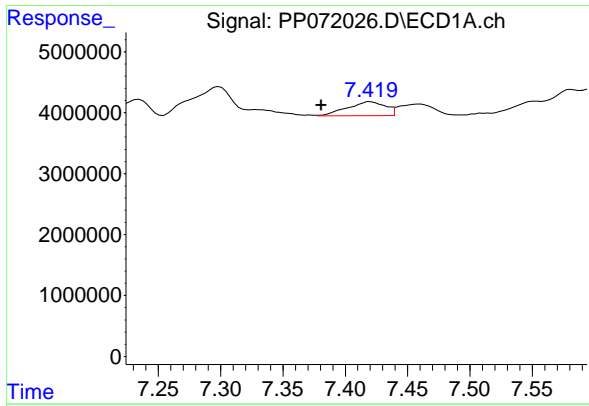
#28 AR-1254-3

R.T.: 7.108 min
 Delta R.T.: 0.010 min
 Response: 18967222
 Conc: 148.44 ng/ml



#28 AR-1254-3

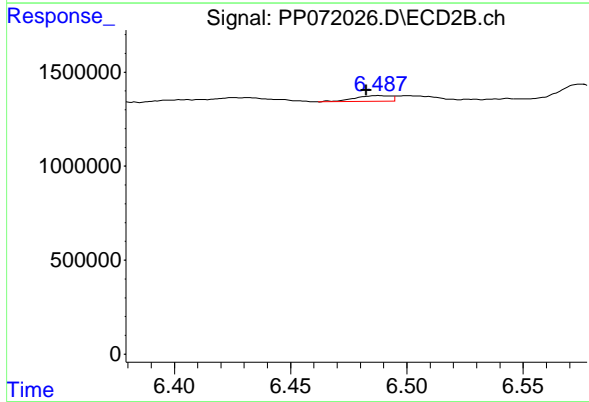
R.T.: 6.242 min
 Delta R.T.: -0.012 min
 Response: 351657
 Conc: 2.97 ng/ml



#29 AR-1254-4

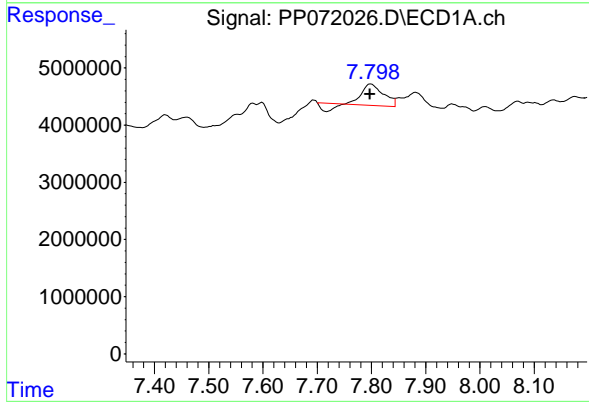
R.T.: 7.420 min
 Delta R.T.: 0.040 min
 Response: 4853765
 Conc: 41.30 ng/ml

Instrument : ECD_P
 ClientSampleId : MOO-25-0148



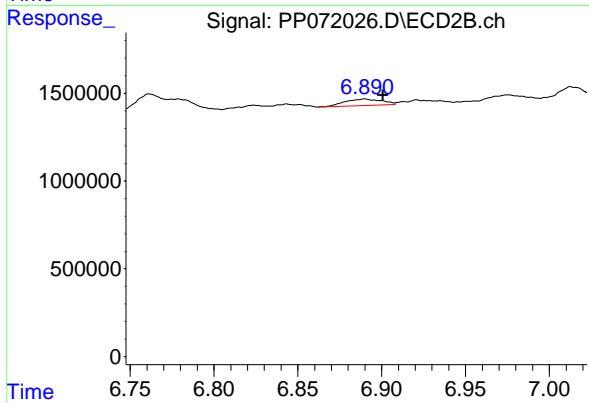
#29 AR-1254-4

R.T.: 6.487 min
 Delta R.T.: 0.005 min
 Response: 323940
 Conc: 4.20 ng/ml



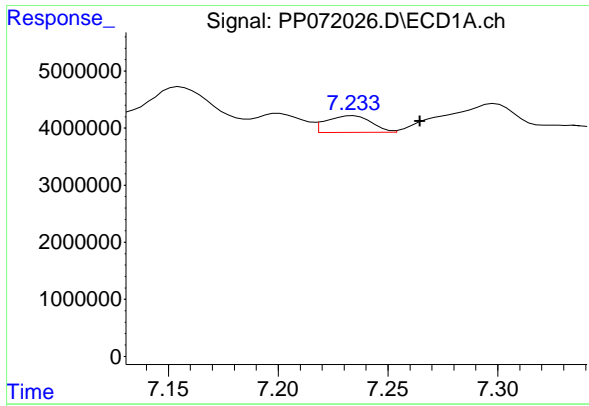
#30 AR-1254-5

R.T.: 7.799 min
 Delta R.T.: 0.002 min
 Response: 8414512
 Conc: 78.11 ng/ml



#30 AR-1254-5

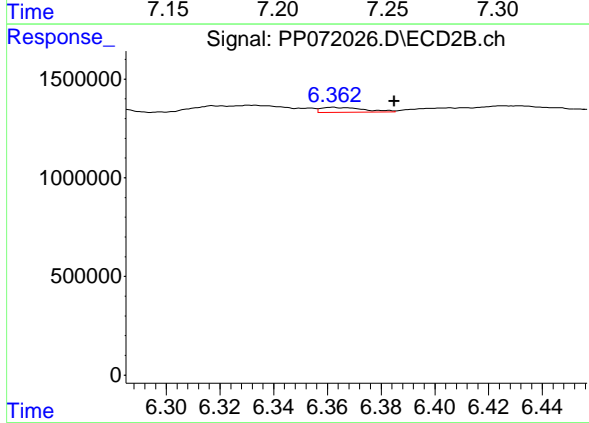
R.T.: 6.890 min
 Delta R.T.: -0.011 min
 Response: 580376
 Conc: 5.72 ng/ml



#31 AR-1260-1

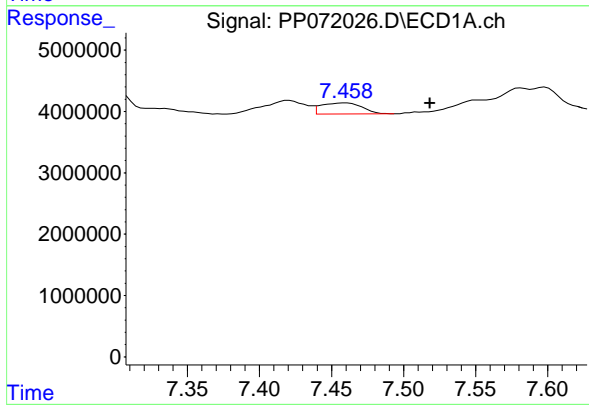
R.T.: 7.234 min
 Delta R.T.: -0.030 min
 Response: 4202415
 Conc: 43.76 ng/ml

Instrument :
 ECD_P
 ClientSampleId :
 MOO-25-0148



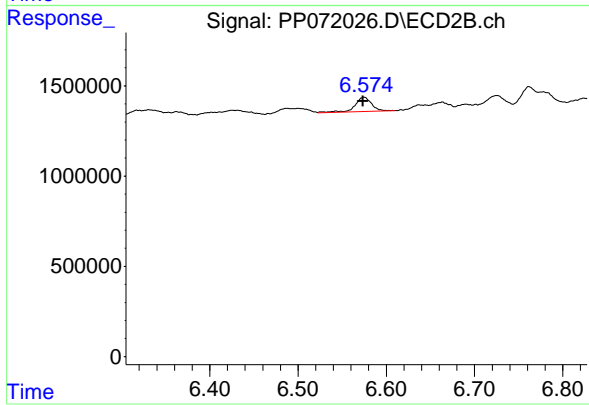
#31 AR-1260-1

R.T.: 6.362 min
 Delta R.T.: -0.023 min
 Response: 277699
 Conc: 3.84 ng/ml



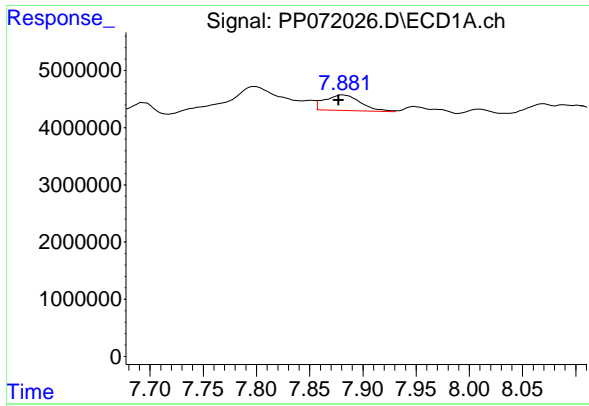
#32 AR-1260-2

R.T.: 7.459 min
 Delta R.T.: -0.059 min
 Response: 3579321
 Conc: 25.02 ng/ml



#32 AR-1260-2

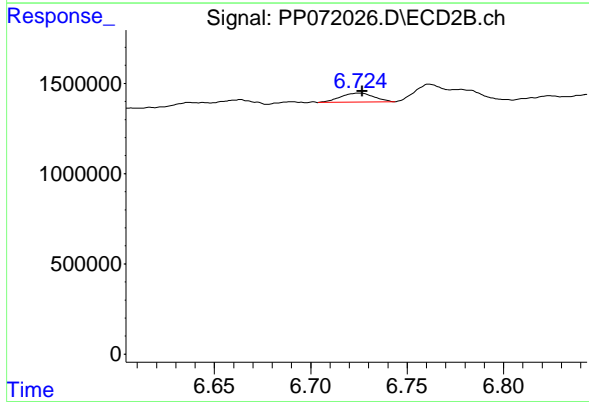
R.T.: 6.575 min
 Delta R.T.: 0.001 min
 Response: 1035456
 Conc: 11.84 ng/ml



#33 AR-1260-3

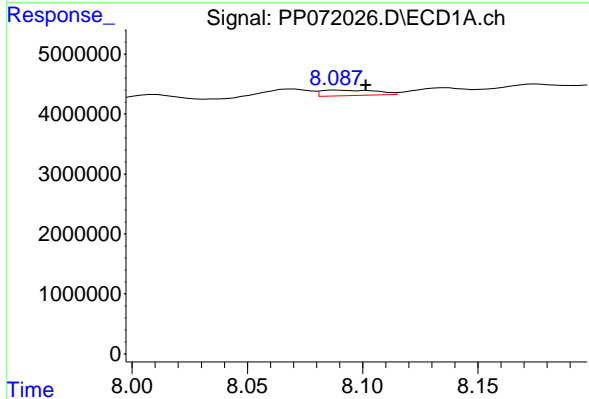
R.T.: 7.882 min
 Delta R.T.: 0.005 min
 Response: 6380125
 Conc: 56.91 ng/ml

Instrument :
 ECD_P
 ClientSampleId :
 MOO-25-0148



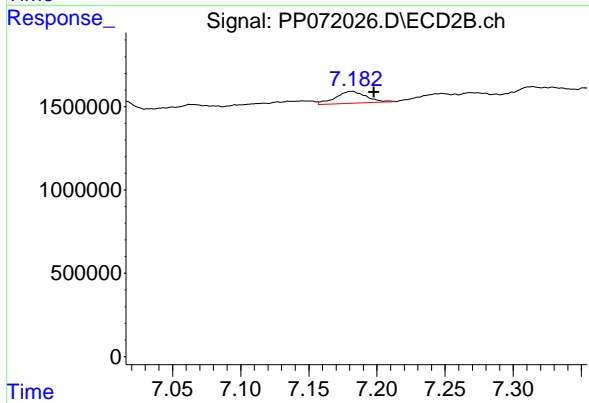
#33 AR-1260-3

R.T.: 6.725 min
 Delta R.T.: -0.001 min
 Response: 610982
 Conc: 7.79 ng/ml



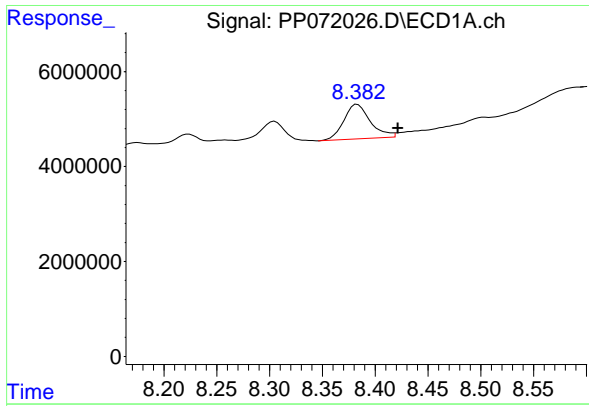
#34 AR-1260-4

R.T.: 8.089 min
 Delta R.T.: -0.012 min
 Response: 1556039
 Conc: 13.79 ng/ml



#34 AR-1260-4

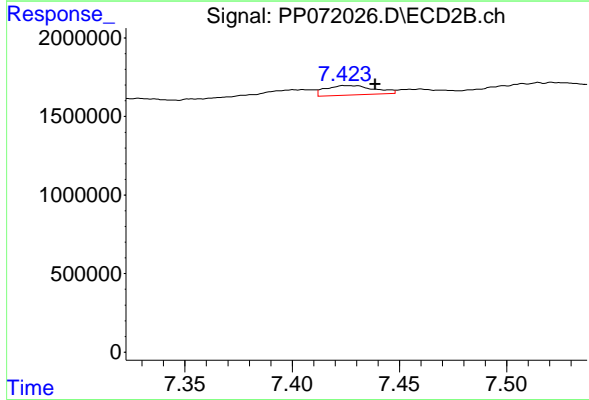
R.T.: 7.181 min
 Delta R.T.: -0.016 min
 Response: 1102878
 Conc: 17.48 ng/ml



#35 AR-1260-5

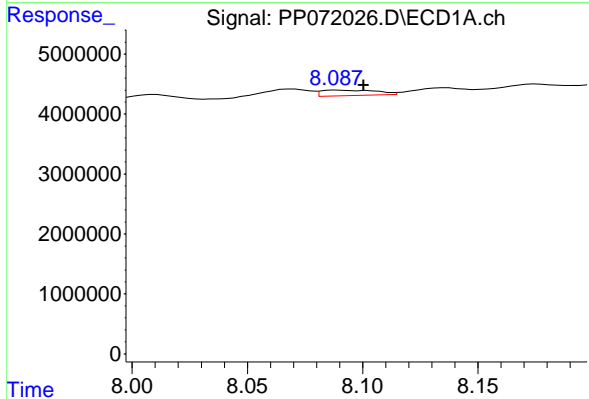
R.T.: 8.383 min
 Delta R.T.: -0.038 min
 Response: 12674535
 Conc: 55.94 ng/ml

Instrument :
 ECD_P
 ClientSampleId :
 MOO-25-0148



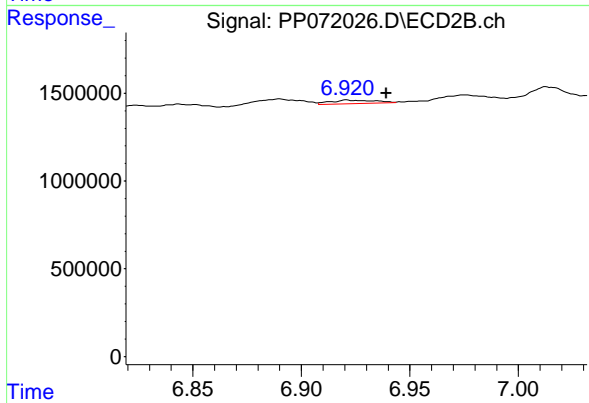
#35 AR-1260-5

R.T.: 7.426 min
 Delta R.T.: -0.013 min
 Response: 936146
 Conc: 6.21 ng/ml



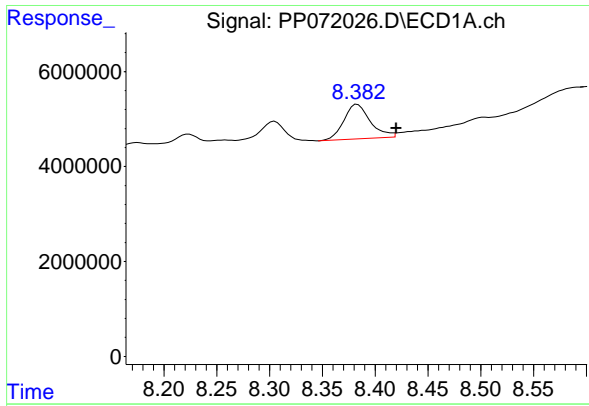
#36 AR-1262-1

R.T.: 8.089 min
 Delta R.T.: -0.011 min
 Response: 1556039
 Conc: 10.77 ng/ml



#36 AR-1262-1

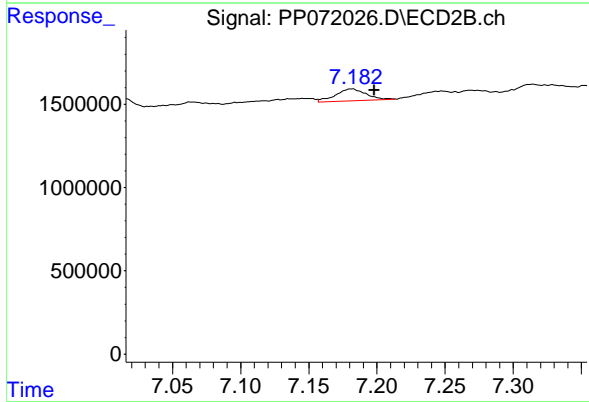
R.T.: 6.921 min
 Delta R.T.: -0.018 min
 Response: 295306
 Conc: 2.60 ng/ml



#37 AR-1262-2

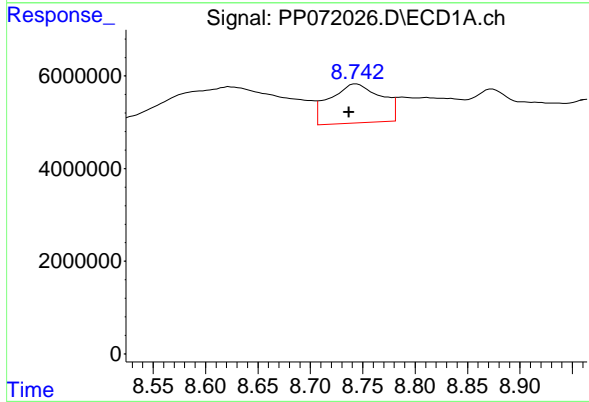
R.T.: 8.383 min
 Delta R.T.: -0.037 min
 Response: 12674535
 Conc: 46.23 ng/ml

Instrument :
 ECD_P
 ClientSampleId :
 MOO-25-0148



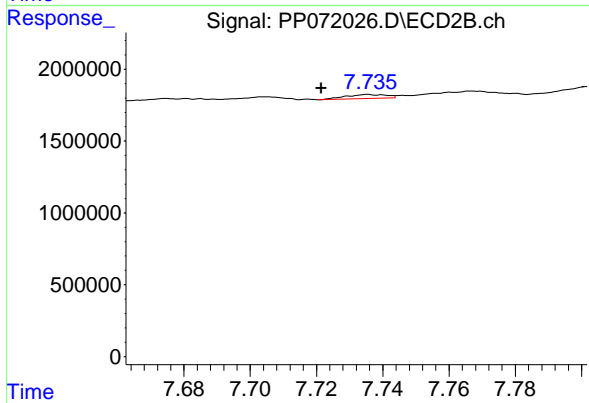
#37 AR-1262-2

R.T.: 7.181 min
 Delta R.T.: -0.017 min
 Response: 1102878
 Conc: 11.94 ng/ml



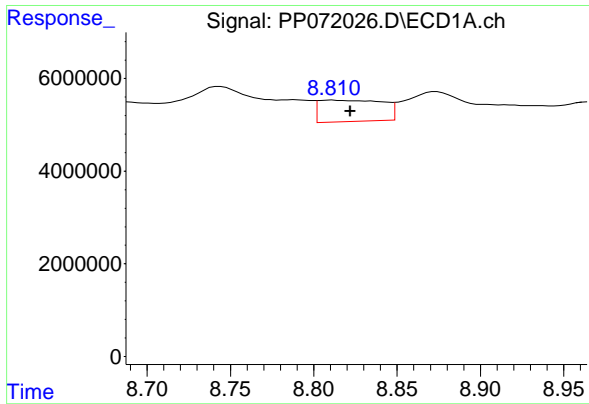
#38 AR-1262-3

R.T.: 8.744 min
 Delta R.T.: 0.007 min
 Response: 28776393
 Conc: 157.35 ng/ml



#38 AR-1262-3

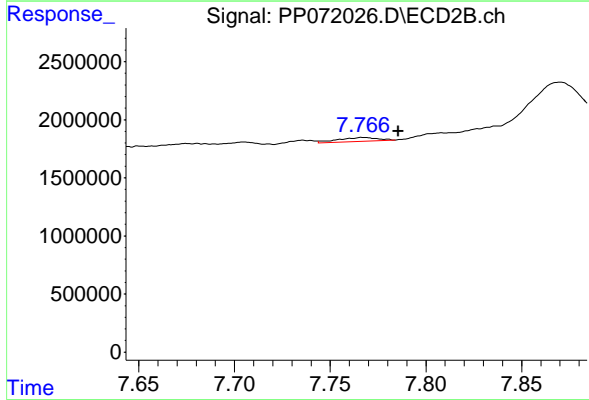
R.T.: 7.736 min
 Delta R.T.: 0.014 min
 Response: 236463
 Conc: 3.12 ng/ml



#39 AR-1262-4

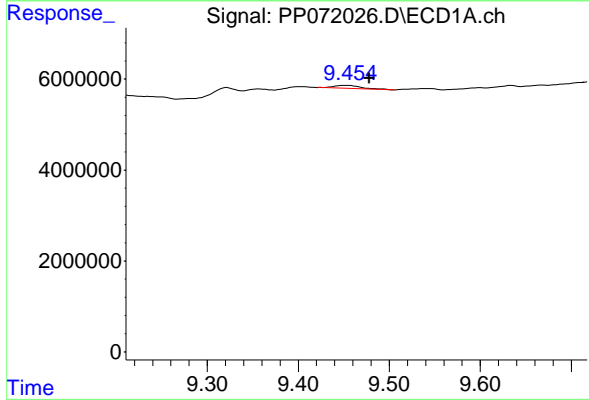
R.T.: 8.811 min
 Delta R.T.: -0.011 min
 Response: 12355733
 Conc: 92.06 ng/ml

Instrument : ECD_P
 ClientSampleId : MOO-25-0148



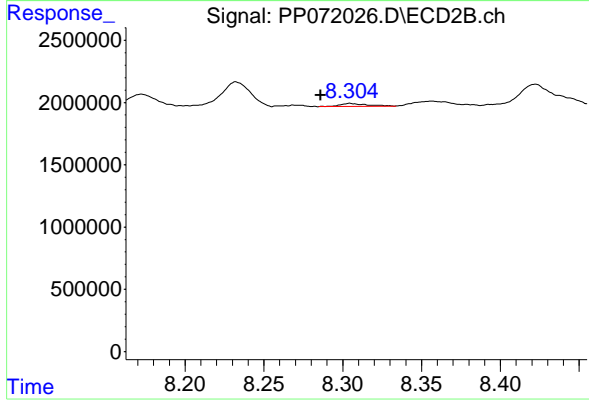
#39 AR-1262-4

R.T.: 7.767 min
 Delta R.T.: -0.018 min
 Response: 483643
 Conc: 3.87 ng/ml



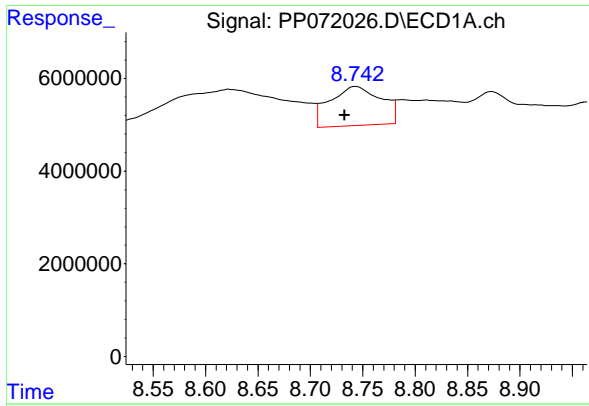
#40 AR-1262-5

R.T.: 9.454 min
 Delta R.T.: -0.024 min
 Response: 1410766
 Conc: 16.00 ng/ml



#40 AR-1262-5

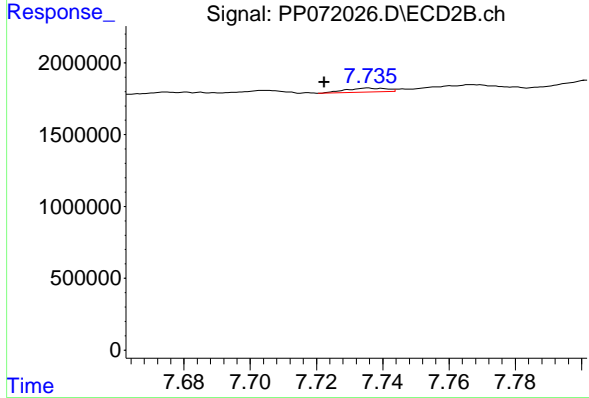
R.T.: 8.305 min
 Delta R.T.: 0.019 min
 Response: 282586
 Conc: 5.09 ng/ml



#41 AR-1268-1

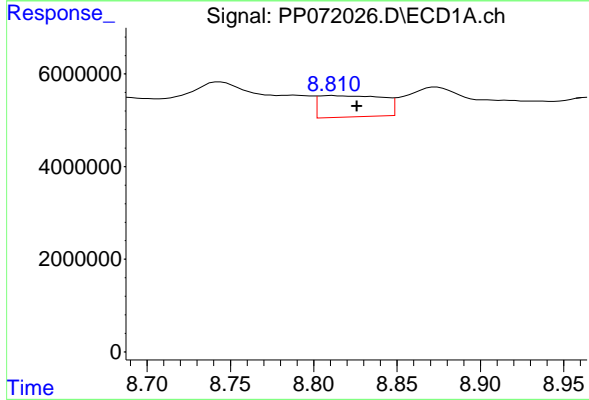
R.T.: 8.744 min
 Delta R.T.: 0.011 min
 Response: 28776393
 Conc: 92.62 ng/ml

Instrument : ECD_P
 ClientSampleId : MOO-25-0148



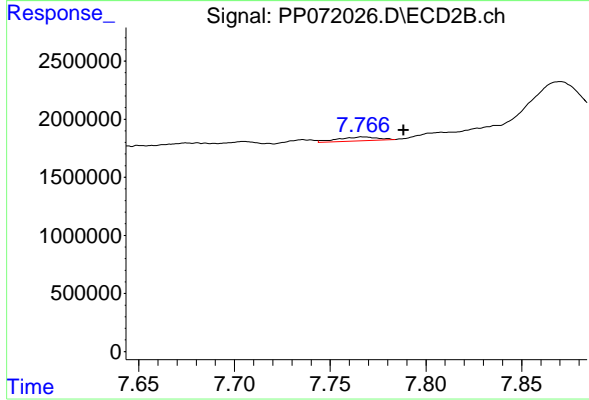
#41 AR-1268-1

R.T.: 7.736 min
 Delta R.T.: 0.013 min
 Response: 236463
 Conc: 1.18 ng/ml



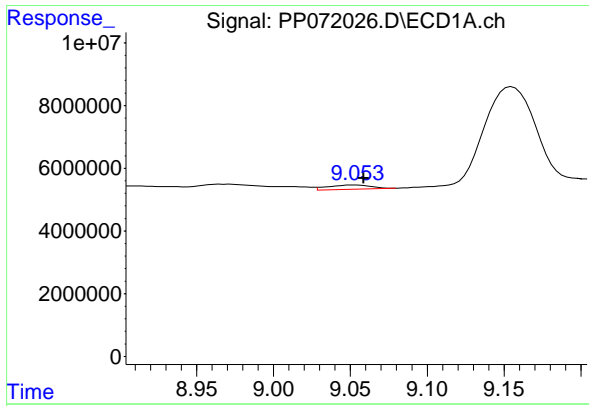
#42 AR-1268-2

R.T.: 8.811 min
 Delta R.T.: -0.015 min
 Response: 12355733
 Conc: 47.94 ng/ml



#42 AR-1268-2

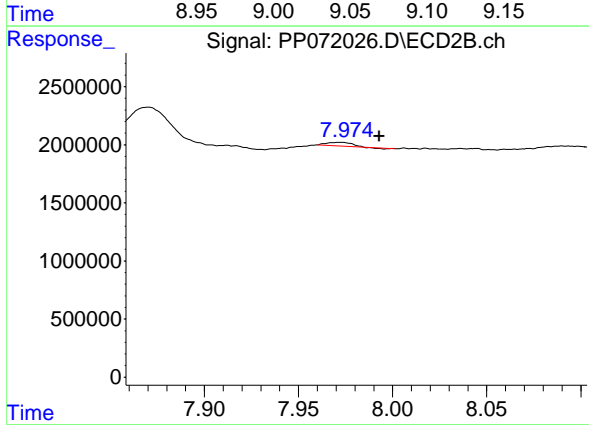
R.T.: 7.767 min
 Delta R.T.: -0.021 min
 Response: 483643
 Conc: 2.86 ng/ml



#43 AR-1268-3

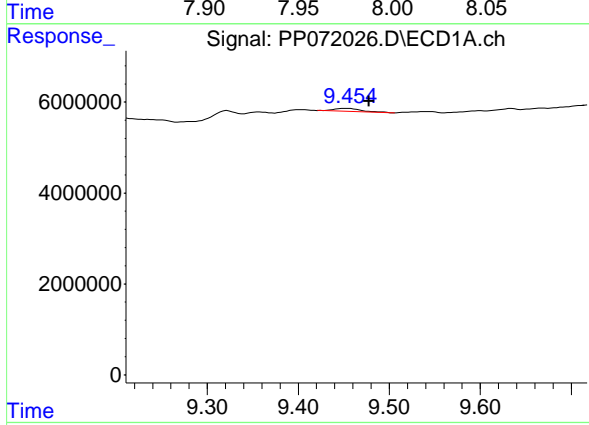
R.T.: 9.053 min
 Delta R.T.: -0.005 min
 Response: 2704970
 Conc: 12.14 ng/ml

Instrument :
 ECD_P
 Client Sample Id :
 MOO-25-0148



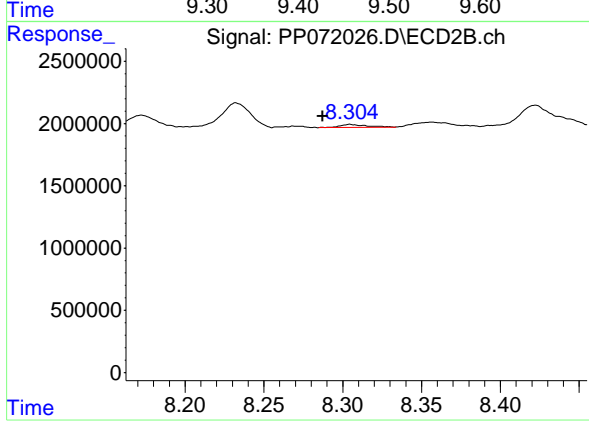
#43 AR-1268-3

R.T.: 7.972 min
 Delta R.T.: -0.021 min
 Response: 247155
 Conc: 1.78 ng/ml



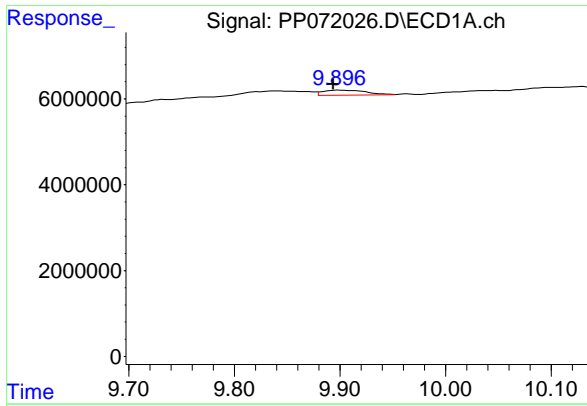
#44 AR-1268-4

R.T.: 9.454 min
 Delta R.T.: -0.024 min
 Response: 1410766
 Conc: 15.00 ng/ml



#44 AR-1268-4

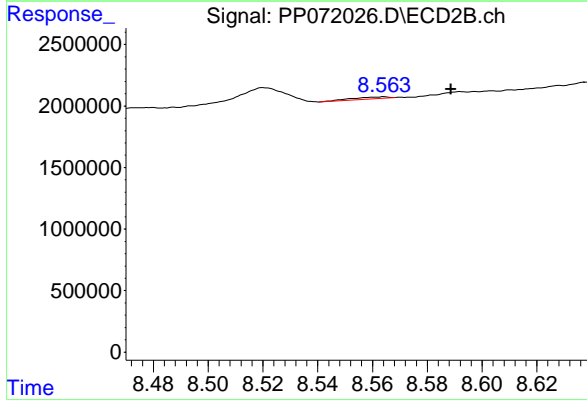
R.T.: 8.305 min
 Delta R.T.: 0.018 min
 Response: 282586
 Conc: 4.65 ng/ml



#45 AR-1268-5

R.T.: 9.898 min
 Delta R.T.: 0.005 min
 Response: 3200097
 Conc: 5.35 ng/ml

Instrument :
 ECD_P
 ClientSampleId :
 MOO-25-0148



#45 AR-1268-5

R.T.: 8.564 min
 Delta R.T.: -0.025 min
 Response: 133787
 Conc: 0.36 ng/ml