

Data Path : Z:\pestpcbsrv\HPCHEM1\ECD_P\Data\PP051420\
 Data File : PP030627.D
 Signal(s) : Signal #1: ECD1A.CH Signal #2: ECD2B.CH
 Acq On : 14 May 2020 19:24
 Operator : DD\AJ
 Sample : HEXANE
 Misc :
 ALS Vial : 1 Sample Multiplier: 1

Integration File signal 1: autoint1.e
 Integration File signal 2: autoint2.e
 Quant Time: May 15 02:38:46 2020
 Quant Method : Z:\pestpcbsrv\HPCHEM1\ECD_P\methods\PP051420.M
 Quant Title : 8080.M
 QLast Update : Fri May 15 02:35:56 2020
 Response via : Initial Calibration
 Integrator: ChemStation 6890 Scale Mode: Large solvent peaks clipped

Volume Inj. : 2 µl
 Signal #1 Phase : ZB-CLPesticides-1 Signal #2 Phase: ZB-CLPesticides-2
 Signal #1 Info : 30M x 0.32mm x0.5 Signal #2 Info : 30M x 0.32mm x 0.25µm

Compound	RT#1	RT#2	Resp#1	Resp#2	ng/ml	ng/ml
----------	------	------	--------	--------	-------	-------

System Monitoring Compounds

Target Compounds

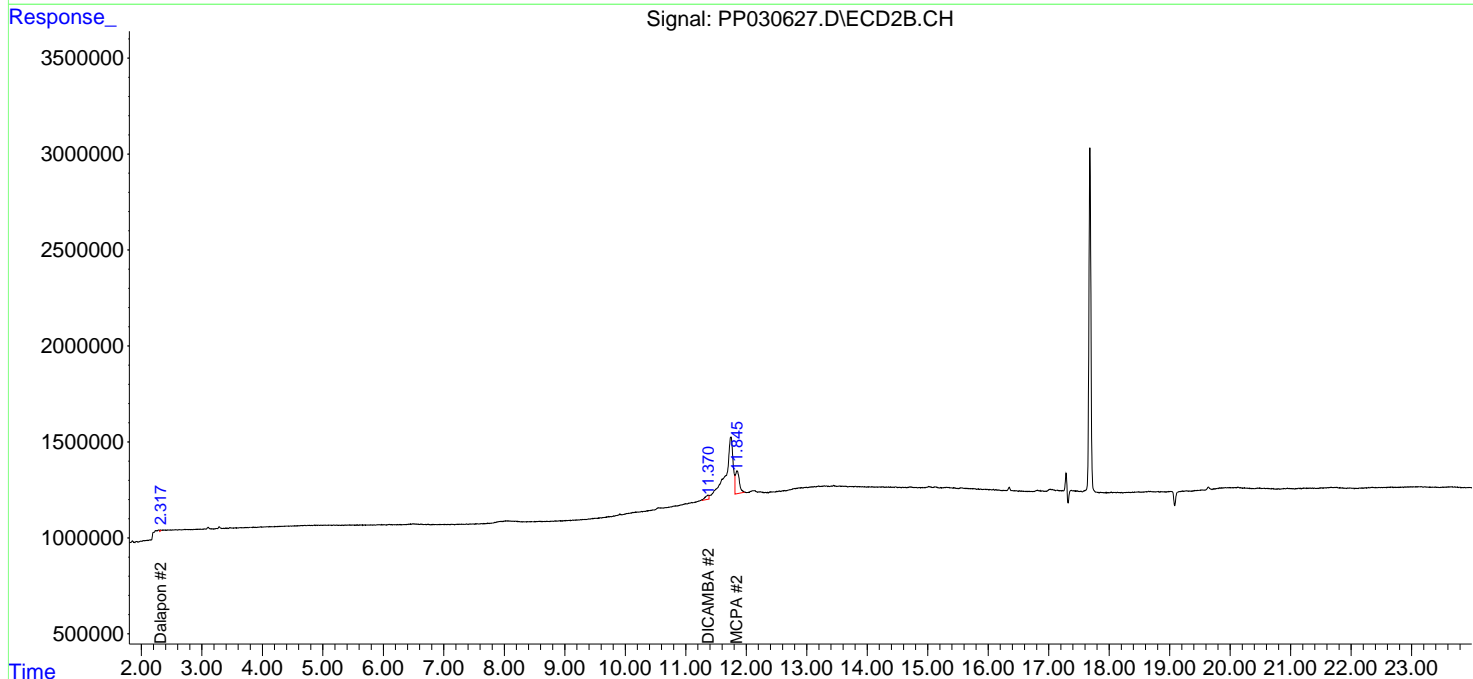
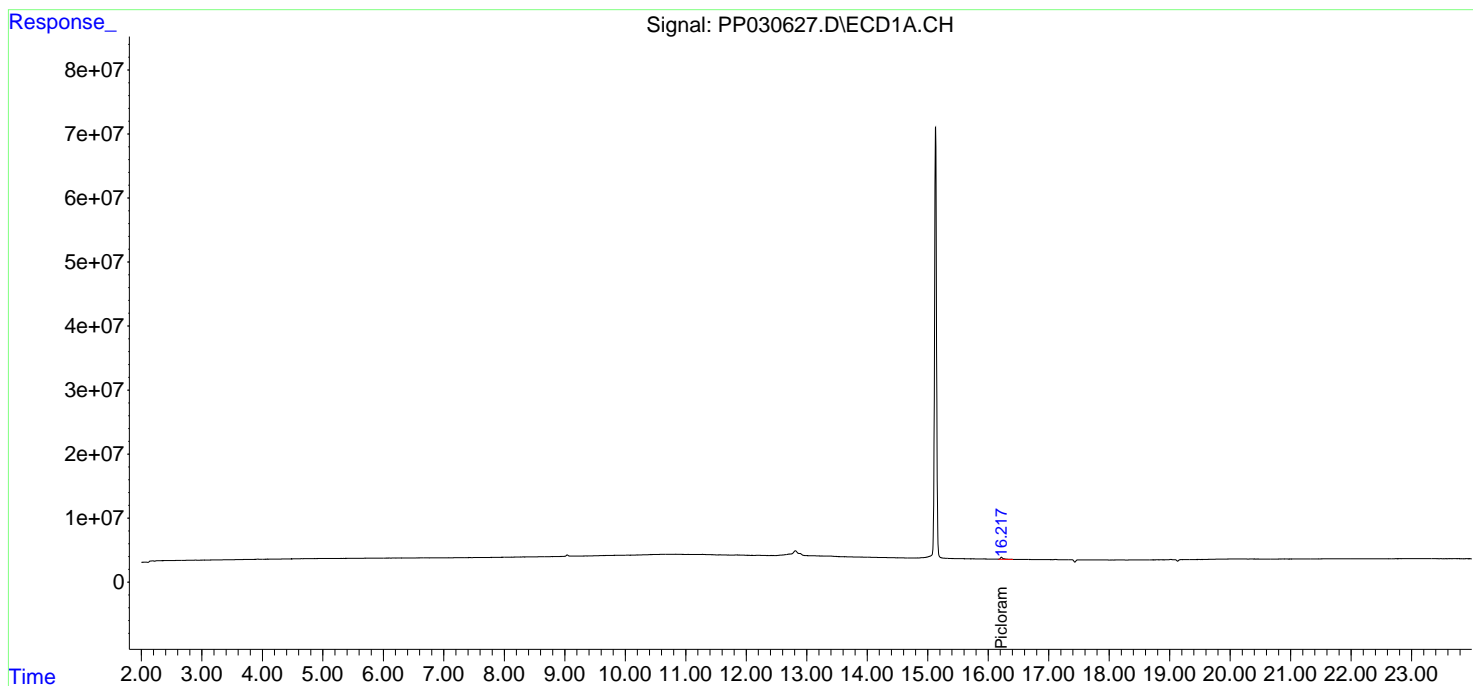
1) T	Dalapon	0.000	2.318	0	55581	N.D.	0.175 #
5) T	DICAMBA	0.000	11.371	0	889748	N.D.	0.947 #
7) T	MCPA	0.000	11.847	0	5475599	N.D.	6.579 #
15) T	Picloram	16.219	0.000	10285744	0	2.657	N.D. #

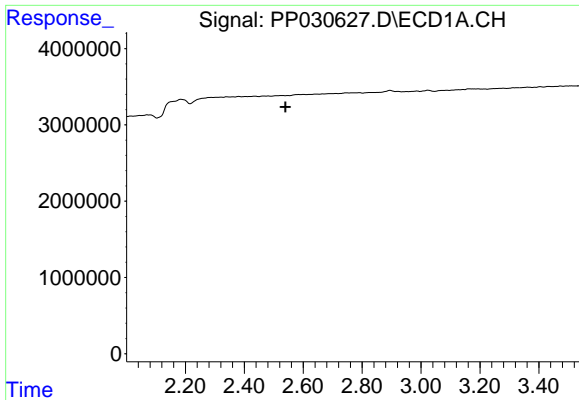
(f)=RT Delta > 1/2 Window (#)=Amounts differ by > 25% (m)=manual int.

Data Path : Z:\pestpcbsrv\HPCHEM1\ECD_P\Data\PP051420\
Data File : PP030627.D
Signal(s) : Signal #1: ECD1A.CH Signal #2: ECD2B.CH
Acq On : 14 May 2020 19:24
Operator : DD\AJ
Sample : HEXANE
Misc :
ALS Vial : 1 Sample Multiplier: 1

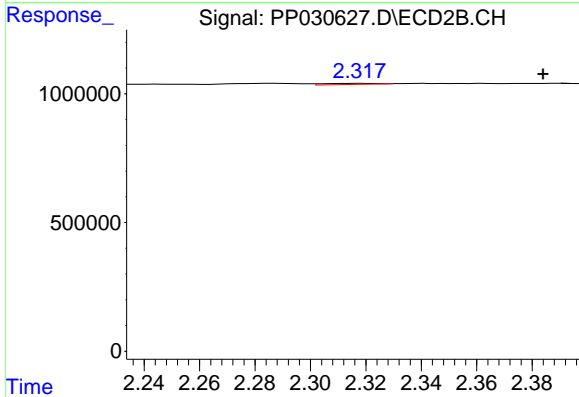
Integration File signal 1: autoint1.e
Integration File signal 2: autoint2.e
Quant Time: May 15 02:38:46 2020
Quant Method : Z:\pestpcbsrv\HPCHEM1\ECD_P\methods\PP051420.M
Quant Title : 8080.M
QLast Update : Fri May 15 02:35:56 2020
Response via : Initial Calibration
Integrator: ChemStation 6890 Scale Mode: Large solvent peaks clipped

Volume Inj. : 2 µl
Signal #1 Phase : ZB-CLPesticides-1 Signal #2 Phase: ZB-CLPesticides-2
Signal #1 Info : 30M x 0.32mm x 0.5 Signal #2 Info : 30M x 0.32mm x 0.25µm

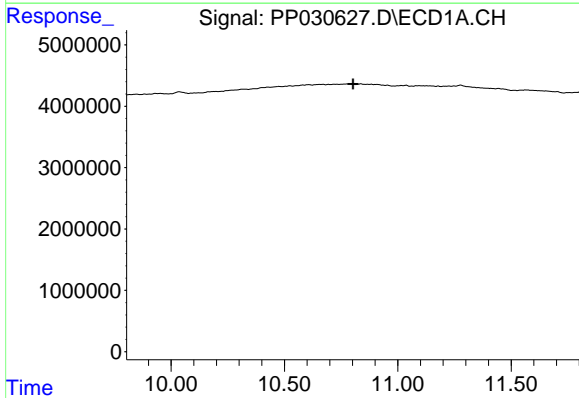




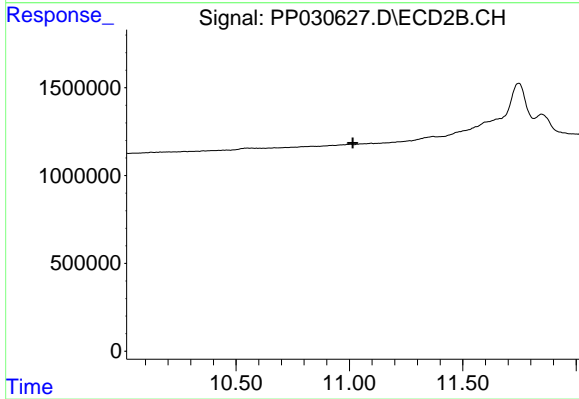
#1 Dalapon
 R.T.: 0.000 min
 Exp R.T. : 2.540 min
 Response: 0
 Conc: N.D.



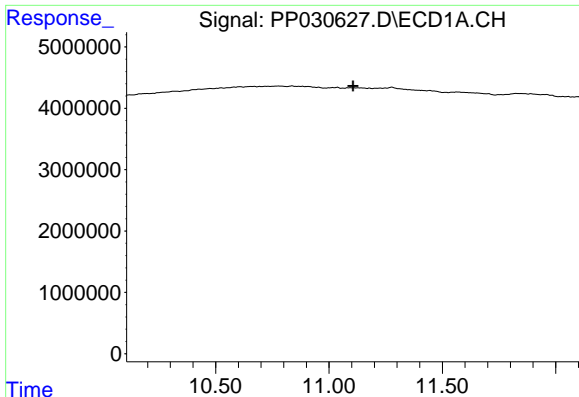
#1 Dalapon
 R.T.: 2.318 min
 Delta R.T.: -0.066 min
 Response: 55581
 Conc: 0.17 ng/ml



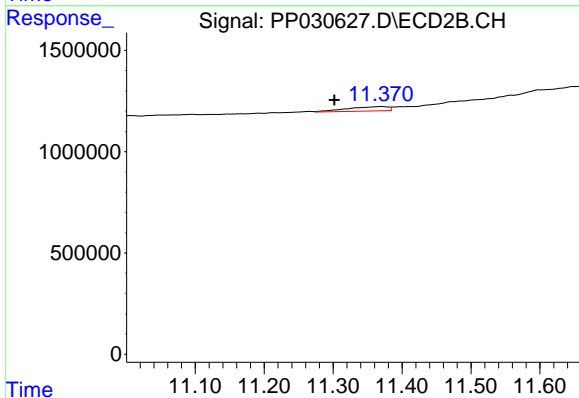
#4 2,4-DCAA
 R.T.: 0.000 min
 Exp R.T. : 10.803 min
 Response: 0
 Conc: N.D.



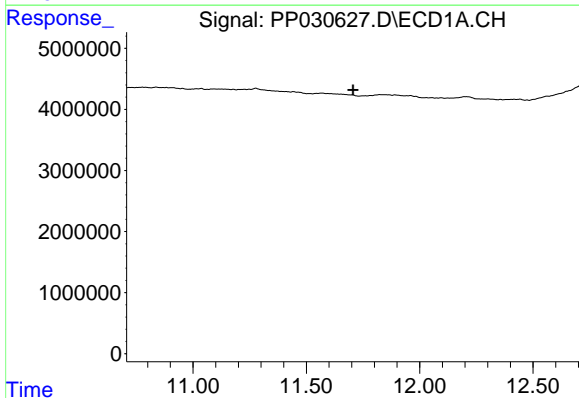
#4 2,4-DCAA
 R.T.: 0.000 min
 Exp R.T. : 11.015 min
 Response: 0
 Conc: N.D.



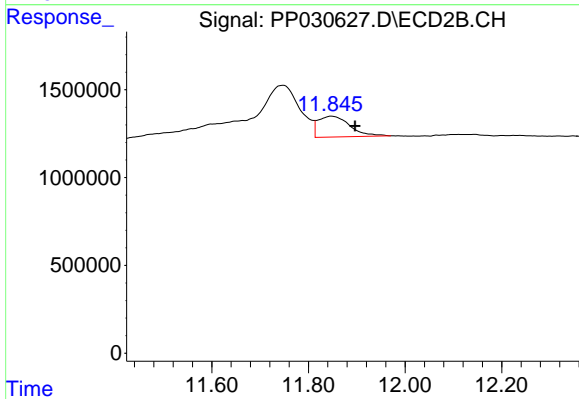
#5 DICAMBA
 R.T.: 0.000 min
 Exp R.T. : 11.106 min
 Response: 0
 Conc: N.D.



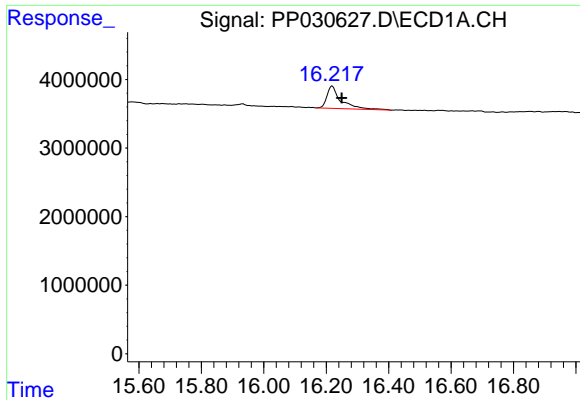
#5 DICAMBA
 R.T.: 11.371 min
 Delta R.T.: 0.070 min
 Response: 889748
 Conc: 0.95 ng/ml



#7 MCPA
 R.T.: 0.000 min
 Exp R.T. : 11.706 min
 Response: 0
 Conc: N.D.

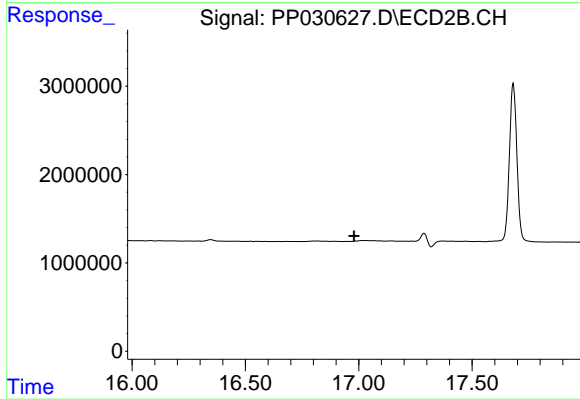


#7 MCPA
 R.T.: 11.847 min
 Delta R.T.: -0.049 min
 Response: 5475599
 Conc: 6.58 ug/ml



#15 Picloram

R.T.: 16.219 min
Delta R.T.: -0.031 min
Response: 10285744
Conc: 2.66 ng/ml



#15 Picloram

R.T.: 0.000 min
Exp R.T. : 16.980 min
Response: 0
Conc: N.D.