

Data Path : Z:\pestpcbsrv\HPCHEM1\ECD_P\Data\PP051420\
 Data File : PP030628.D
 Signal(s) : Signal #1: ECD1A.CH Signal #2: ECD2B.CH
 Acq On : 14 May 2020 19:53
 Operator : DD\AJ
 Sample : I.BLK
 Misc :
 ALS Vial : 2 Sample Multiplier: 1

Integration File signal 1: autoint1.e
 Integration File signal 2: autoint2.e
 Quant Time: May 15 02:38:58 2020
 Quant Method : Z:\pestpcbsrv\HPCHEM1\ECD_P\methods\PP051420.M
 Quant Title : 8080.M
 QLast Update : Fri May 15 02:35:56 2020
 Response via : Initial Calibration
 Integrator: ChemStation 6890 Scale Mode: Large solvent peaks clipped

Volume Inj. : 2 µl
 Signal #1 Phase : ZB-CLPesticides-1 Signal #2 Phase: ZB-CLPesticides-2
 Signal #1 Info : 30M x 0.32mm x0.5 Signal #2 Info : 30M x 0.32mm x 0.25µm

Compound	RT#1	RT#2	Resp#1	Resp#2	ng/ml	ng/ml

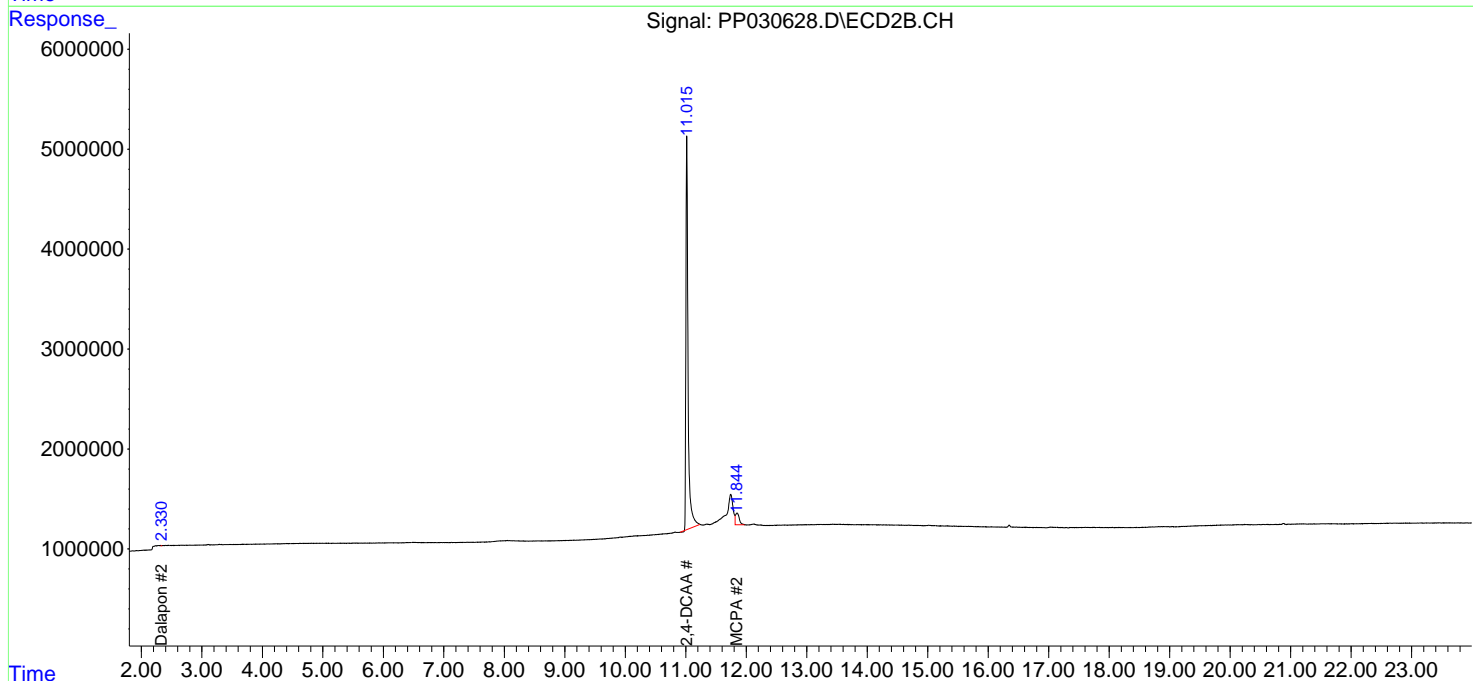
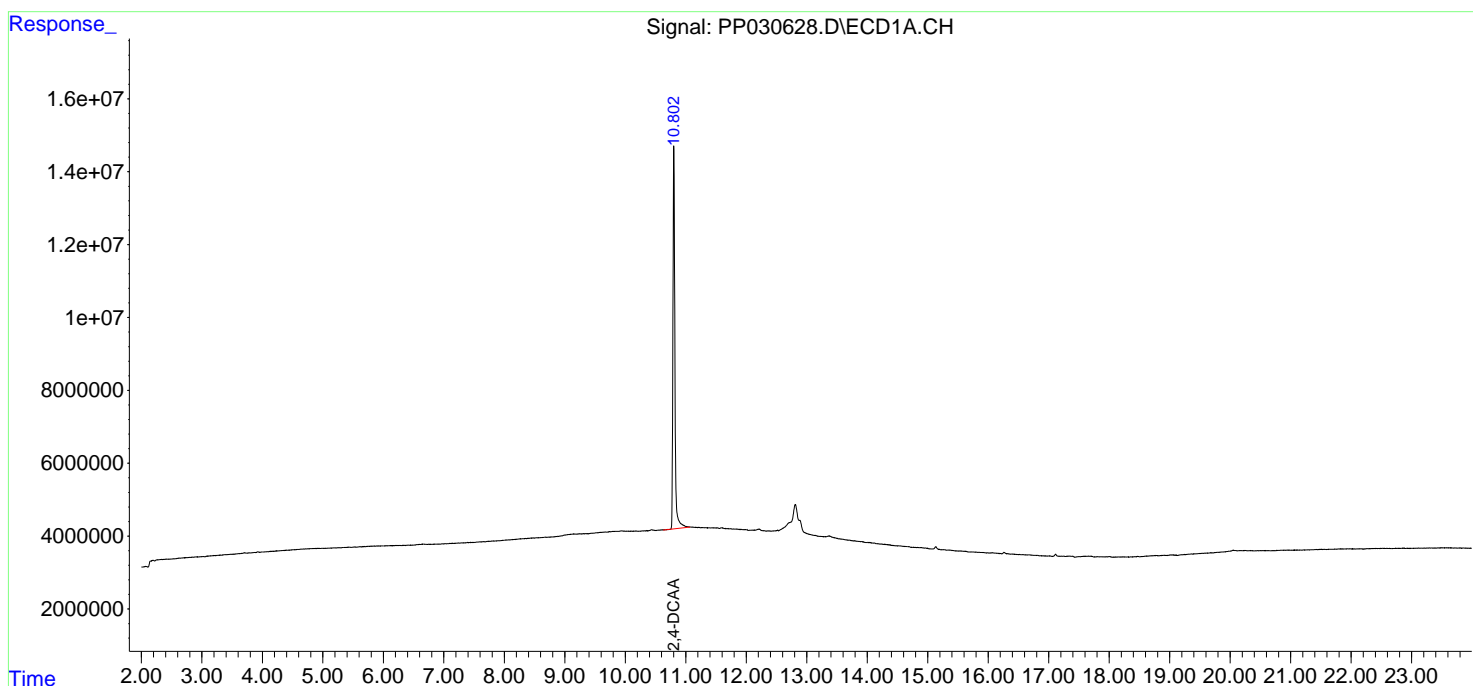
System Monitoring Compounds						
4) S 2,4-DCAA	10.803	11.017	240.0E6	96822799	491.781	409.306
Target Compounds						
1) T Dalapon	0.000	2.333	0	69450	N.D.	0.218 #
7) T MCPA	0.000	11.847	0	5091310	N.D.	6.117 #

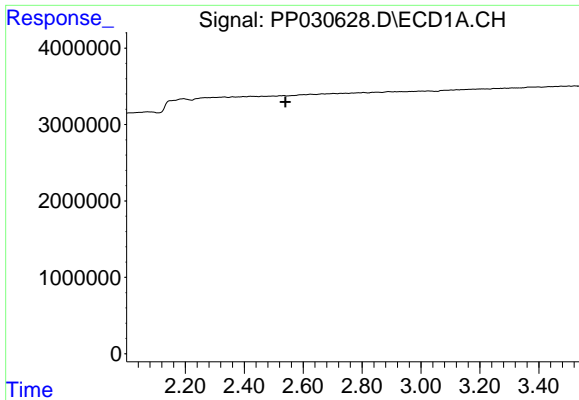
(f)=RT Delta > 1/2 Window (#)=Amounts differ by > 25% (m)=manual int.

Data Path : Z:\pestpcbsrv\HPCHEM1\ECD_P\Data\PP051420\
Data File : PP030628.D
Signal(s) : Signal #1: ECD1A.CH Signal #2: ECD2B.CH
Acq On : 14 May 2020 19:53
Operator : DD\AJ
Sample : I.BLK
Misc :
ALS Vial : 2 Sample Multiplier: 1

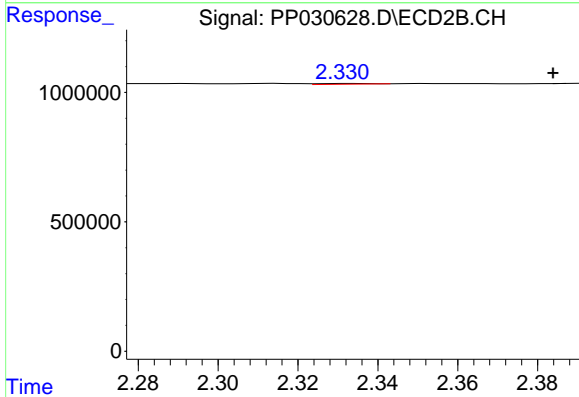
Integration File signal 1: autoint1.e
Integration File signal 2: autoint2.e
Quant Time: May 15 02:38:58 2020
Quant Method : Z:\pestpcbsrv\HPCHEM1\ECD_P\methods\PP051420.M
Quant Title : 8080.M
QLast Update : Fri May 15 02:35:56 2020
Response via : Initial Calibration
Integrator: ChemStation 6890 Scale Mode: Large solvent peaks clipped

Volume Inj. : 2 µl
Signal #1 Phase : ZB-CLPesticides-1 Signal #2 Phase: ZB-CLPesticides-2
Signal #1 Info : 30M x 0.32mm x0.5 Signal #2 Info : 30M x 0.32mm x 0.25µm

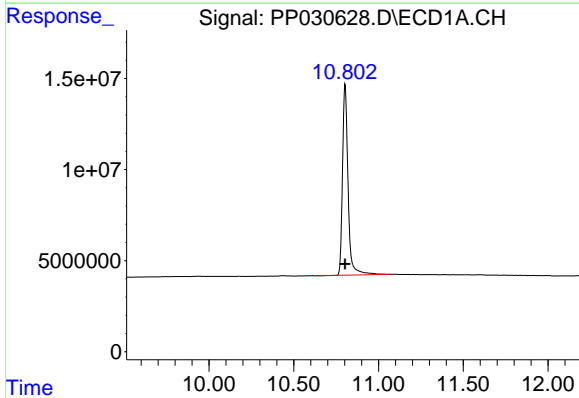




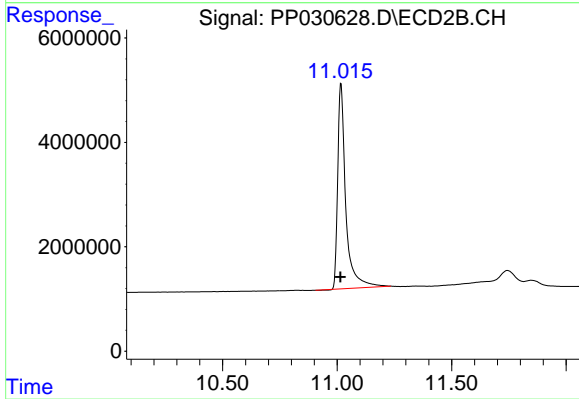
#1 Dalapon
 R.T.: 0.000 min
 Exp R.T.: 2.540 min
 Response: 0
 Conc: N.D.



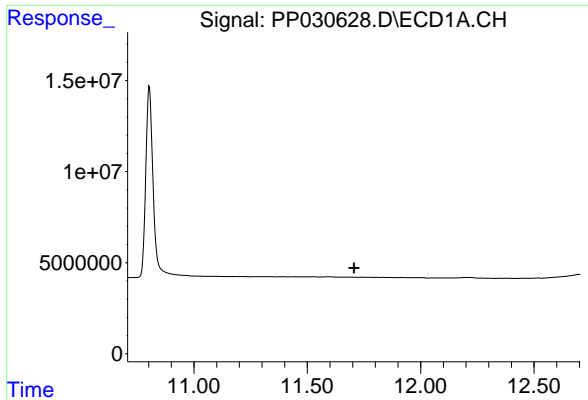
#1 Dalapon
 R.T.: 2.333 min
 Delta R.T.: -0.050 min
 Response: 69450
 Conc: 0.22 ng/ml



#4 2,4-DCAA
 R.T.: 10.803 min
 Delta R.T.: 0.000 min
 Response: 240017793
 Conc: 491.78 ng/ml

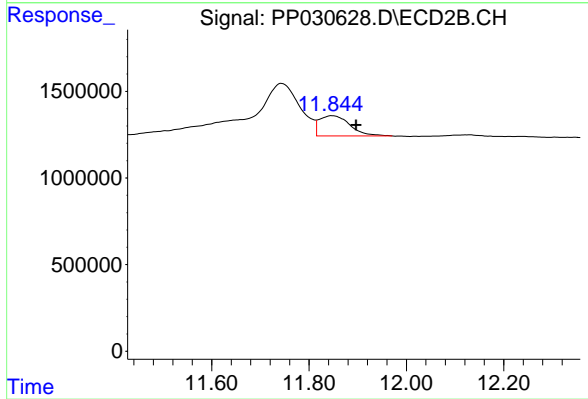


#4 2,4-DCAA
 R.T.: 11.017 min
 Delta R.T.: 0.002 min
 Response: 96822799
 Conc: 409.31 ng/ml



#7 MCPA

R.T.: 0.000 min
Exp R.T. : 11.706 min
Response: 0
Conc: N.D.



#7 MCPA

R.T.: 11.847 min
Delta R.T.: -0.050 min
Response: 5091310
Conc: 6.12 ug/ml