

Data Path : Z:\pestpcbsrv\HPCHEM1\ECD_P\Data\PP051420\
 Data File : PP030630.D
 Signal(s) : Signal #1: ECD1A.CH Signal #2: ECD2B.CH
 Acq On : 14 May 2020 20:51
 Operator : DD\AJ
 Sample : HSTDIC500
 Misc :
 ALS Vial : 4 Sample Multiplier: 1

Integration File signal 1: autoint1.e
 Integration File signal 2: autoint2.e
 Quant Time: May 15 02:13:06 2020
 Quant Method : Z:\pestpcbsrv\HPCHEM1\ECD_P\methods\PP051420.M
 Quant Title : 8080.M
 QLast Update : Fri May 15 02:05:25 2020
 Response via : Initial Calibration
 Integrator: ChemStation 6890 Scale Mode: Large solvent peaks clipped

Volume Inj. : 2 µl
 Signal #1 Phase : ZB-CLPesticides-1 Signal #2 Phase: ZB-CLPesticides-2
 Signal #1 Info : 30M x 0.32mm x0.5 Signal #2 Info : 30M x 0.32mm x 0.25µm

	Compound	RT#1	RT#2	Resp#1	Resp#2	ng/ml	ng/ml

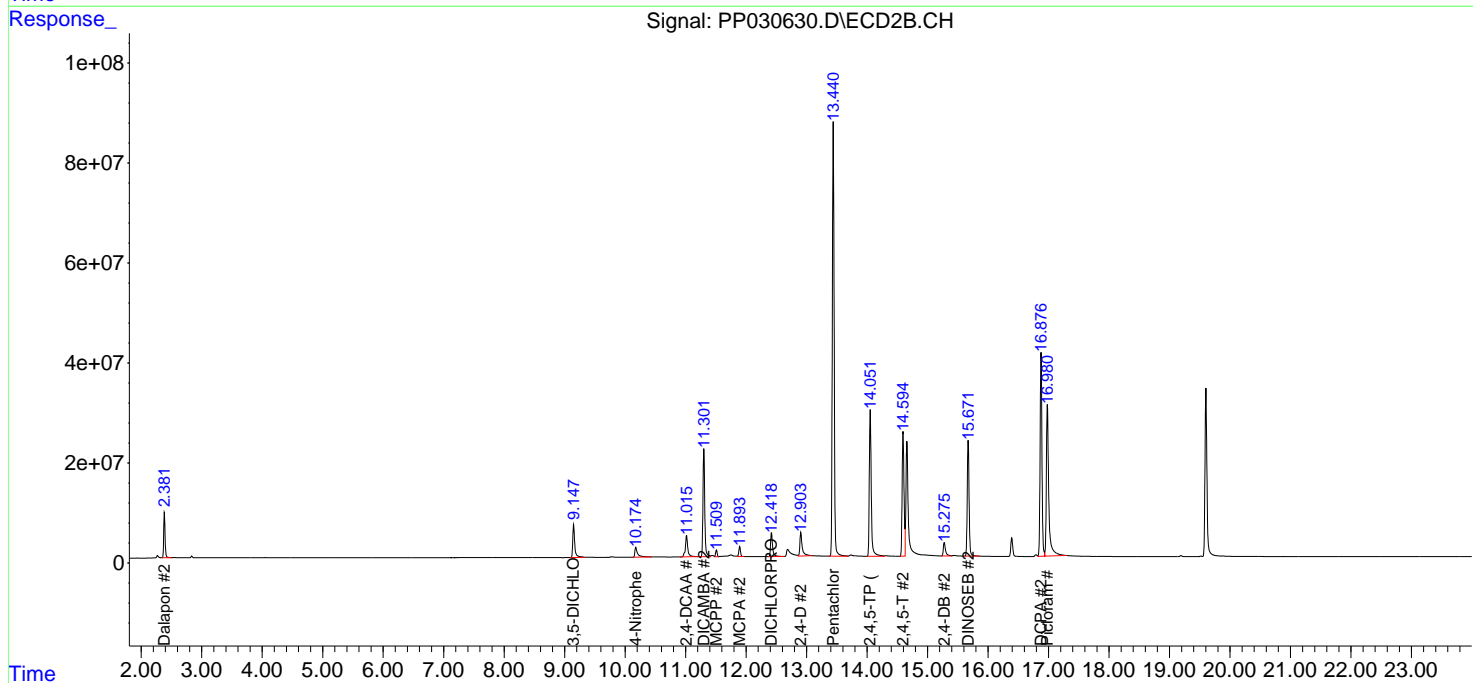
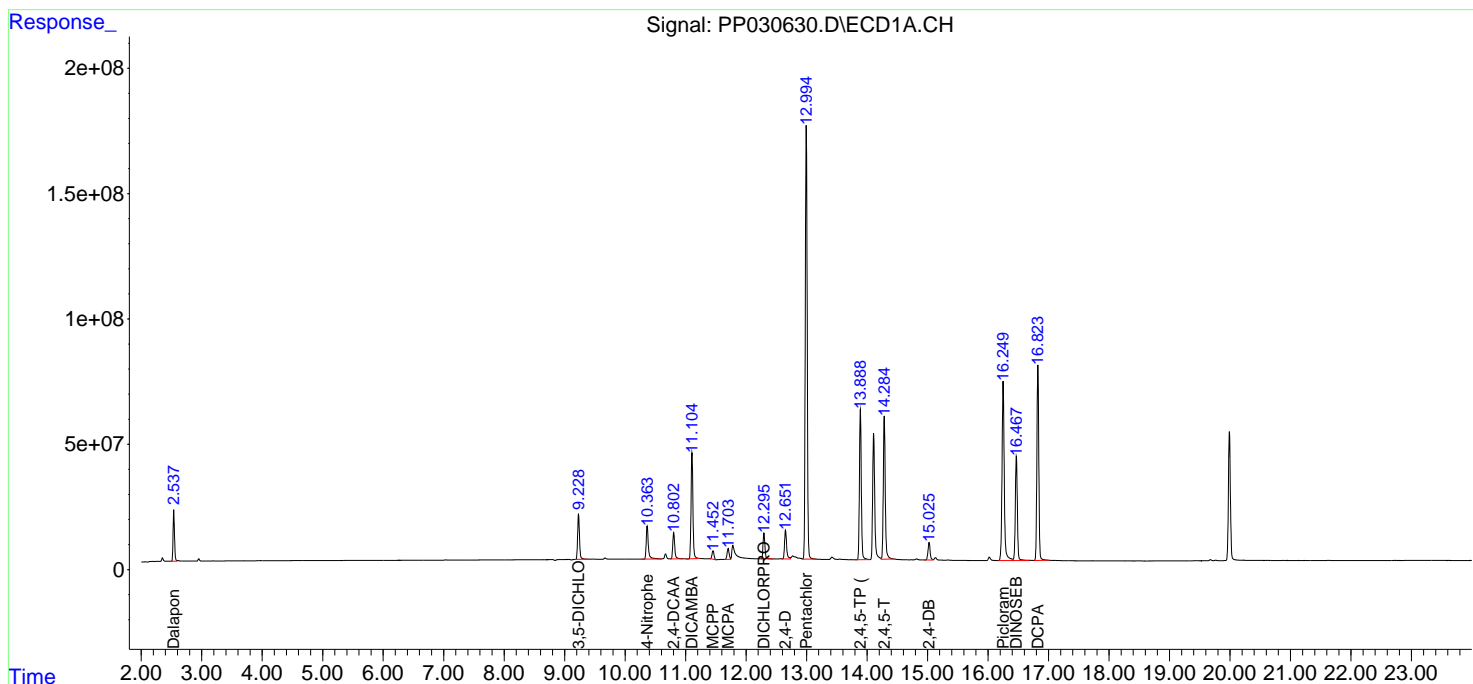
System Monitoring Compounds							
4) S	2,4-DCAA	10.804	11.016	240.9E6	119.9E6	499.241	509.932
Target Compounds							
1) T	Dalapon	2.538	2.383	334.2E6	145.2E6	462.173	457.141
2) T	3,5-DICHL...	9.230	9.149	388.2E6	153.2E6	480.815	477.213
3) T	4-Nitroph...	10.365	10.176	327.8E6	64288493	456.644	444.641
5) T	DICAMBA	11.106	11.302	916.7E6	444.1E6	482.478	474.652
6) T	MCPP	11.454	11.510	75297082	23544818	51.830	45.239
7) T	MCPA	11.704	11.894	101.0E6	38583366	51.410	46.315
8) T	DICHLORPROP	12.296	12.420	228.4E6	110.6E6	494.449	481.259
9) T	2,4-D	12.652	12.905	274.0E6	129.3E6	495.139	471.344
10) T	Pentachlo...	12.996	13.441	3798.7E6	1821.6E6	489.274	490.279
11) T	2,4,5-TP ...	13.890	14.053	1301.2E6	659.2E6	486.373	480.002
12) T	2,4,5-T	14.285	14.595	1287.0E6	533.9E6	482.947	463.899
13) T	2,4-DB	15.026	15.276	171.5E6	70179340	476.520	469.676
14) T	DINOSEB	16.469	15.672	969.0E6	487.1E6	482.160	478.447
15) T	Picloram	16.250	16.981	1826.5E6	839.4E6	475.023	460.322
16) T	DCPA	16.824	16.877	1731.4E6	859.8E6	485.321	489.620

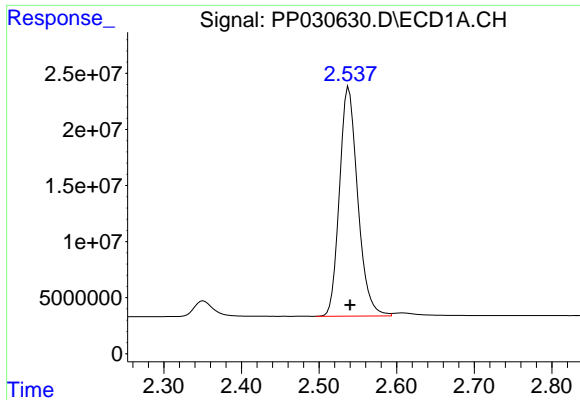
(f)=RT Delta > 1/2 Window (#)=Amounts differ by > 25% (m)=manual int.

Data Path : Z:\pestpcbsrv\HPCHEM1\ECD_P\Data\PP051420\
 Data File : PP030630.D
 Signal(s) : Signal #1: ECD1A.CH Signal #2: ECD2B.CH
 Acq On : 14 May 2020 20:51
 Operator : DD\AJ
 Sample : HSTDICC500
 Misc :
 ALS Vial : 4 Sample Multiplier: 1

Integration File signal 1: autoint1.e
 Integration File signal 2: autoint2.e
 Quant Time: May 15 02:13:06 2020
 Quant Method : Z:\pestpcbsrv\HPCHEM1\ECD_P\methods\PP051420.M
 Quant Title : 8080.M
 QLast Update : Fri May 15 02:05:25 2020
 Response via : Initial Calibration
 Integrator: ChemStation 6890 Scale Mode: Large solvent peaks clipped

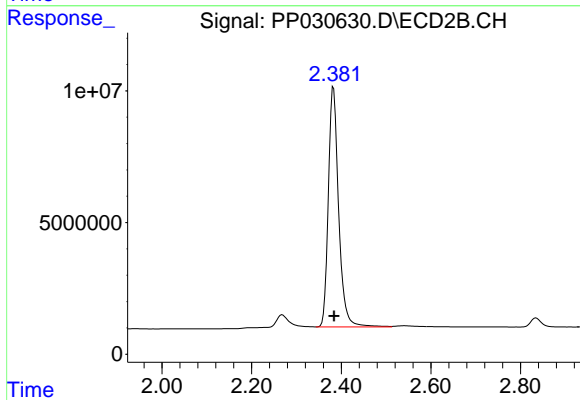
Volume Inj. : 2 µl
 Signal #1 Phase : ZB-CLPesticides-1 Signal #2 Phase: ZB-CLPesticides-2
 Signal #1 Info : 30M x 0.32mm x0.5 Signal #2 Info : 30M x 0.32mm x 0.25µm





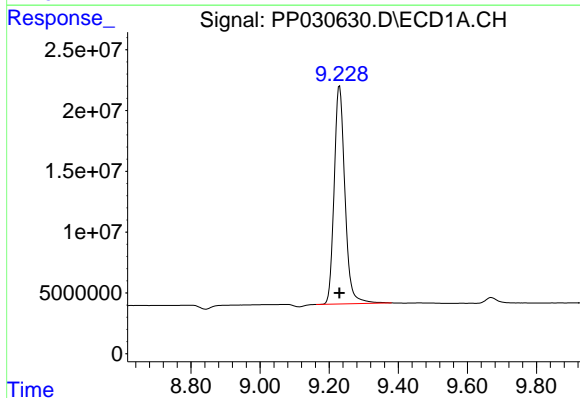
#1 Dalapon

R.T.: 2.538 min
Delta R.T.: -0.002 min
Response: 334235549
Conc: 462.17 ng/ml



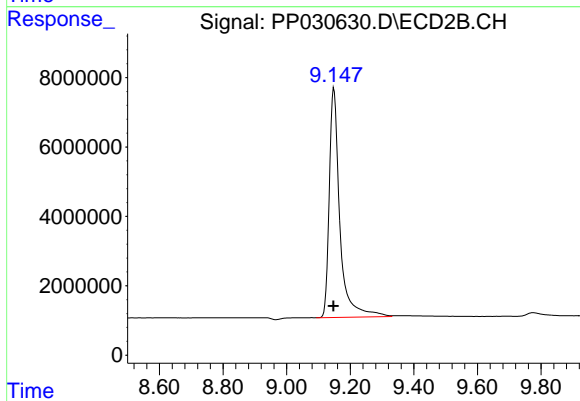
#1 Dalapon

R.T.: 2.383 min
Delta R.T.: -0.001 min
Response: 145187669
Conc: 457.14 ng/ml



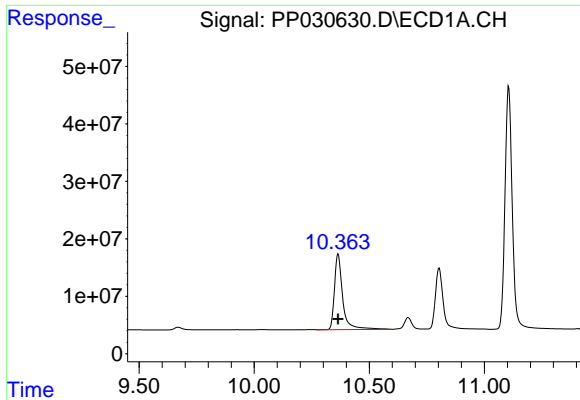
#2 3,5-DICHLOROBENZOIC ACID

R.T.: 9.230 min
Delta R.T.: 0.000 min
Response: 388150409
Conc: 480.81 ng/ml

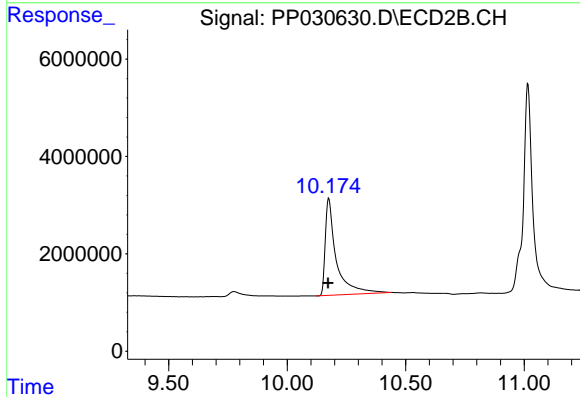


#2 3,5-DICHLOROBENZOIC ACID

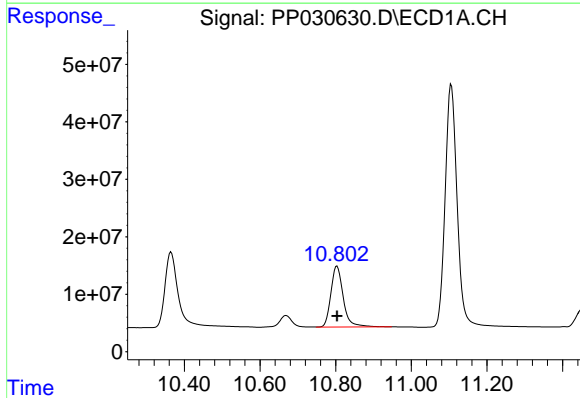
R.T.: 9.149 min
Delta R.T.: 0.001 min
Response: 153182141
Conc: 477.21 ng/ml



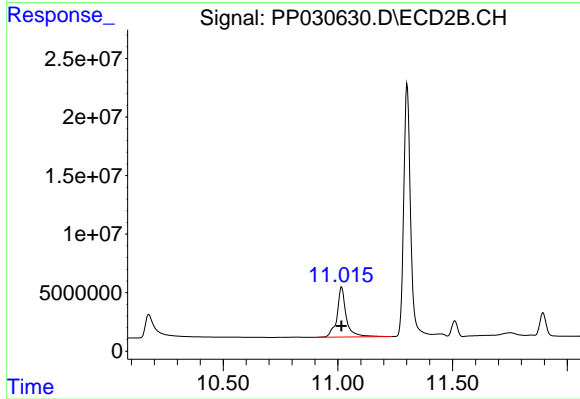
#3 4-Nitrophenol
R.T.: 10.365 min
Delta R.T.: 0.000 min
Response: 327802819
Conc: 456.64 ng/ml



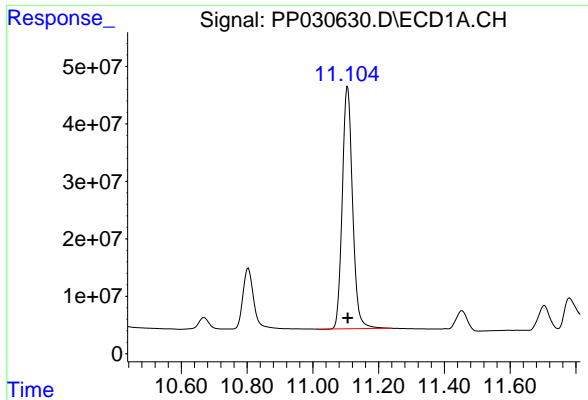
#3 4-Nitrophenol
R.T.: 10.176 min
Delta R.T.: 0.004 min
Response: 64288493
Conc: 444.64 ng/ml



#4 2,4-DCAA
R.T.: 10.804 min
Delta R.T.: 0.000 min
Response: 240924850
Conc: 499.24 ng/ml

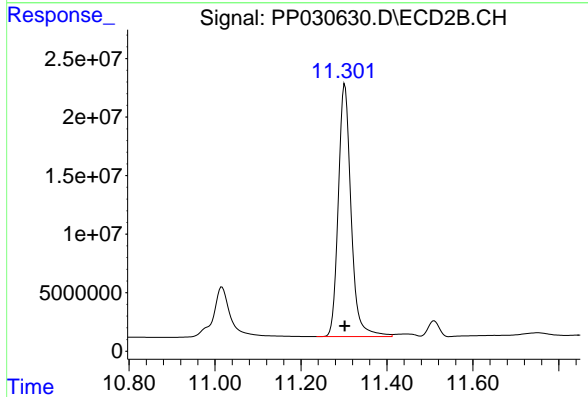


#4 2,4-DCAA
R.T.: 11.016 min
Delta R.T.: 0.002 min
Response: 119903297
Conc: 509.93 ng/ml



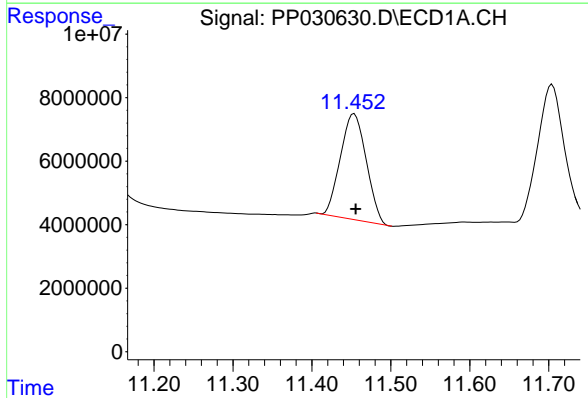
#5 DICAMBA

R.T.: 11.106 min
Delta R.T.: 0.000 min
Response: 916654471
Conc: 482.48 ng/ml



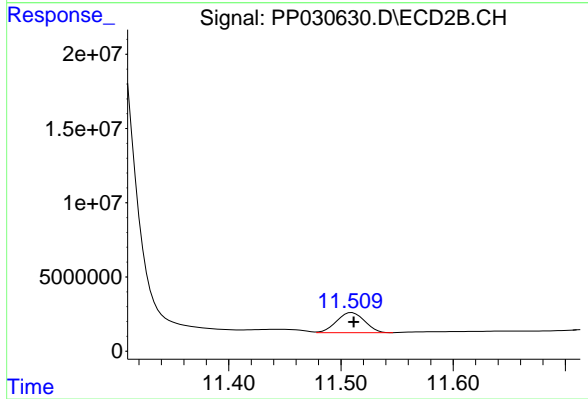
#5 DICAMBA

R.T.: 11.302 min
Delta R.T.: 0.000 min
Response: 444093297
Conc: 474.65 ng/ml



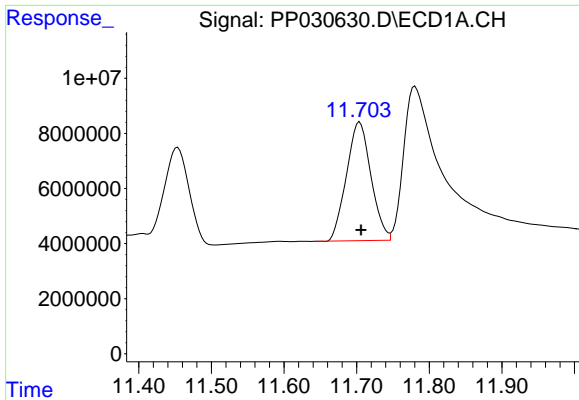
#6 MCP

R.T.: 11.454 min
Delta R.T.: -0.002 min
Response: 75297082
Conc: 51.83 ug/ml

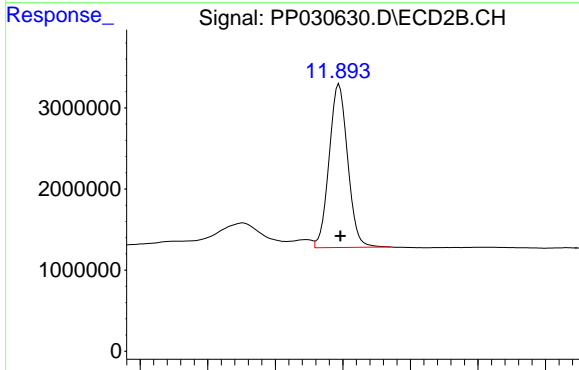


#6 MCP

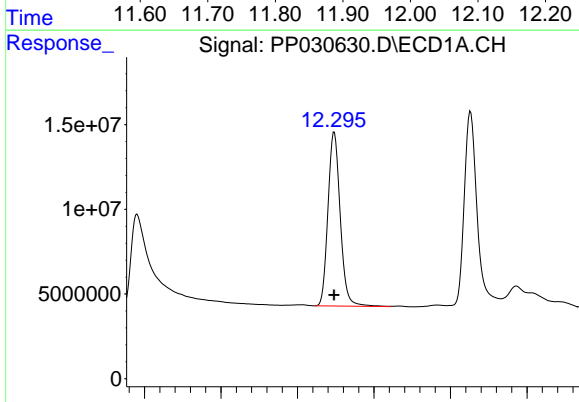
R.T.: 11.510 min
Delta R.T.: -0.002 min
Response: 23544818
Conc: 45.24 ug/ml



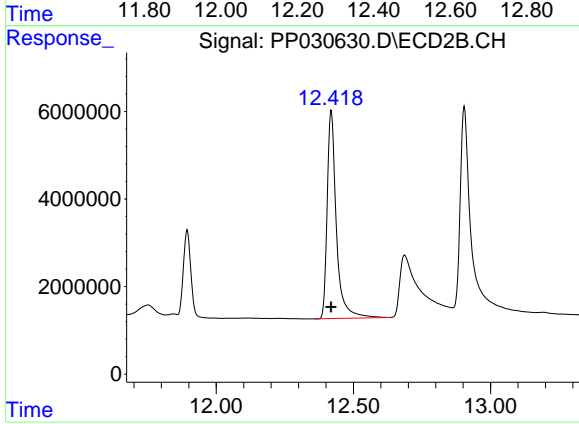
#7 MCPA
R.T.: 11.704 min
Delta R.T.: -0.002 min
Response: 100967240
Conc: 51.41 ug/ml



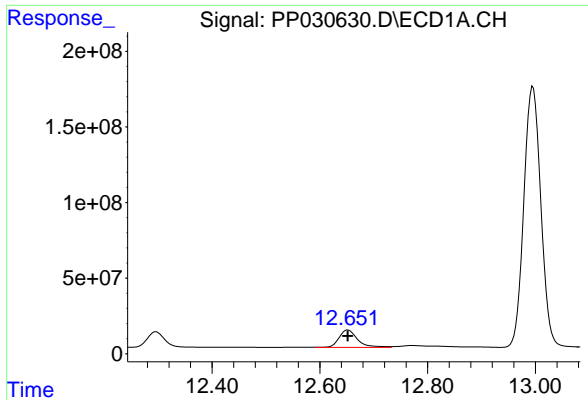
#7 MCPA
R.T.: 11.894 min
Delta R.T.: -0.002 min
Response: 38583366
Conc: 46.32 ug/ml



#8 DICHLORPROP
R.T.: 12.296 min
Delta R.T.: 0.000 min
Response: 228364748
Conc: 494.45 ng/ml

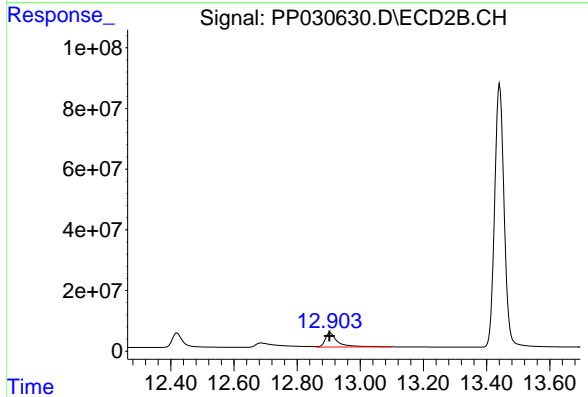


#8 DICHLORPROP
R.T.: 12.420 min
Delta R.T.: 0.000 min
Response: 110557550
Conc: 481.26 ng/ml



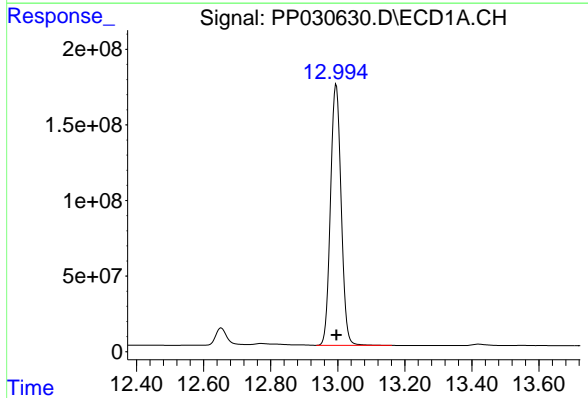
#9 2,4-D

R.T.: 12.652 min
Delta R.T.: 0.000 min
Response: 274044552
Conc: 495.14 ng/ml



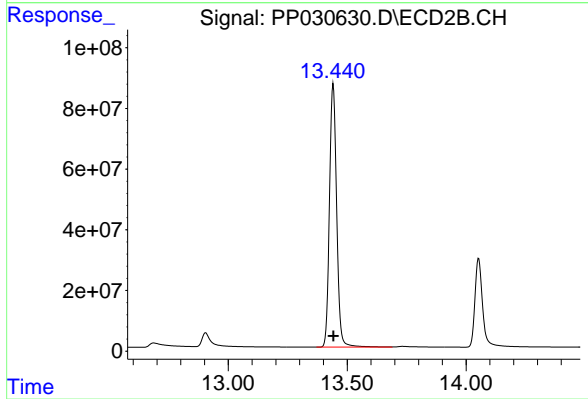
#9 2,4-D

R.T.: 12.905 min
Delta R.T.: 0.002 min
Response: 129251619
Conc: 471.34 ng/ml



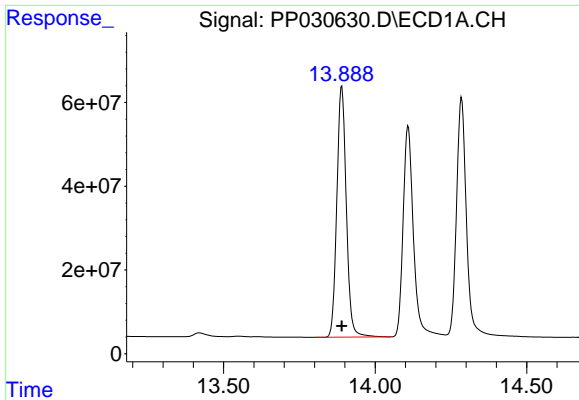
#10 Pentachlorophenol

R.T.: 12.996 min
Delta R.T.: 0.000 min
Response: 3798730402
Conc: 489.27 ng/ml



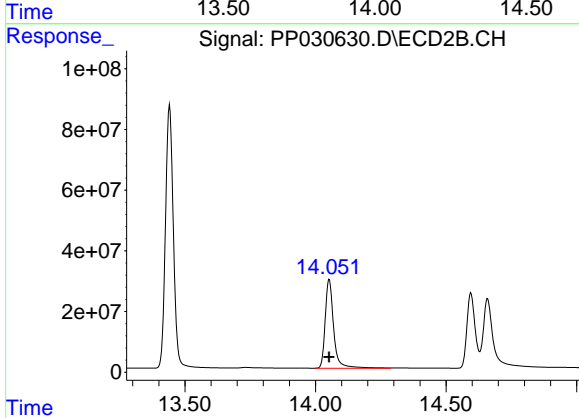
#10 Pentachlorophenol

R.T.: 13.441 min
Delta R.T.: 0.000 min
Response: 1821552523
Conc: 490.28 ng/ml



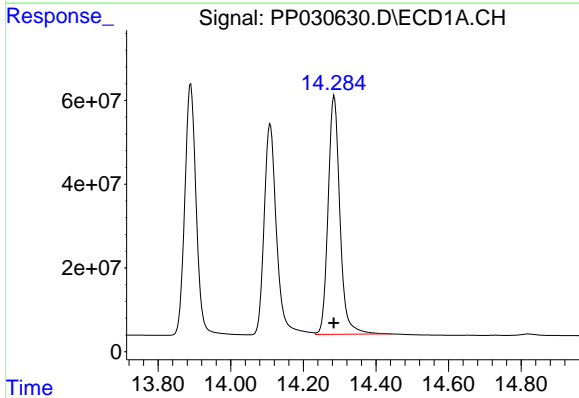
#11 2,4,5-TP (SILVEX)

R.T.: 13.890 min
Delta R.T.: 0.000 min
Response: 1301199814
Conc: 486.37 ng/ml



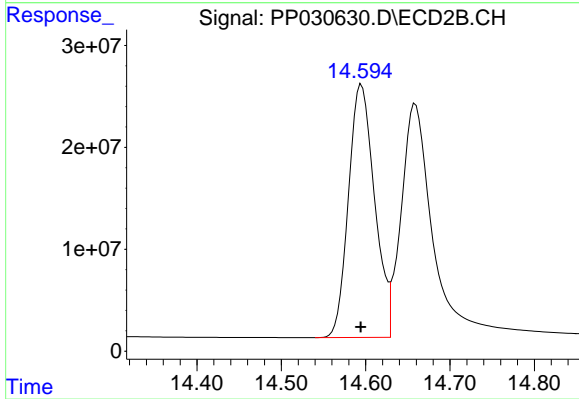
#11 2,4,5-TP (SILVEX)

R.T.: 14.053 min
Delta R.T.: 0.000 min
Response: 659160991
Conc: 480.00 ng/ml



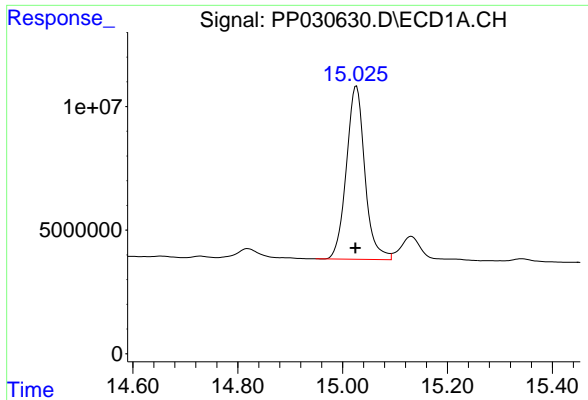
#12 2,4,5-T

R.T.: 14.285 min
Delta R.T.: 0.000 min
Response: 1287048209
Conc: 482.95 ng/ml



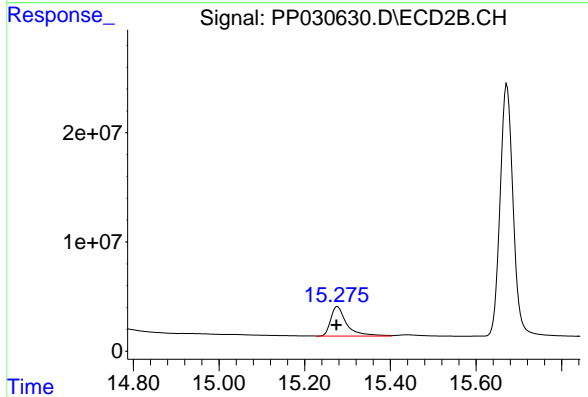
#12 2,4,5-T

R.T.: 14.595 min
Delta R.T.: 0.001 min
Response: 533897181
Conc: 463.90 ng/ml



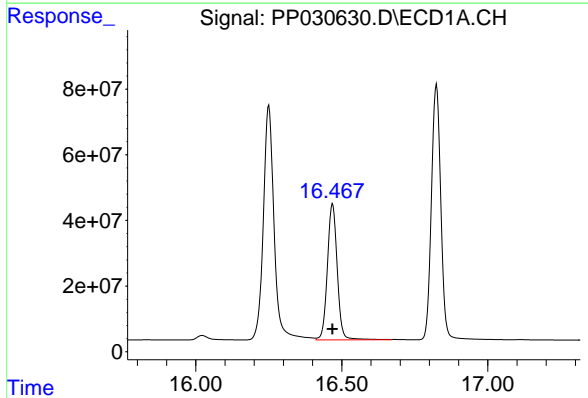
#13 2,4-DB

R.T.: 15.026 min
Delta R.T.: 0.002 min
Response: 171512200
Conc: 476.52 ng/ml



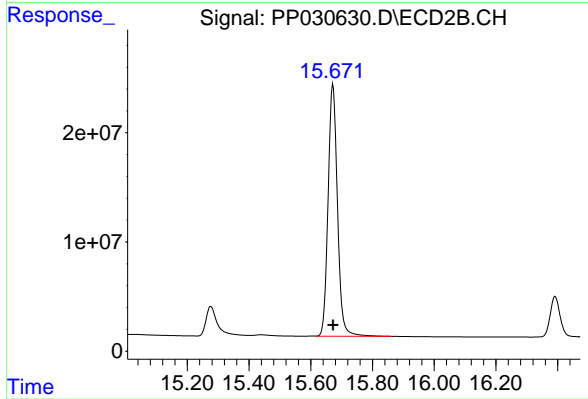
#13 2,4-DB

R.T.: 15.276 min
Delta R.T.: 0.003 min
Response: 70179340
Conc: 469.68 ng/ml



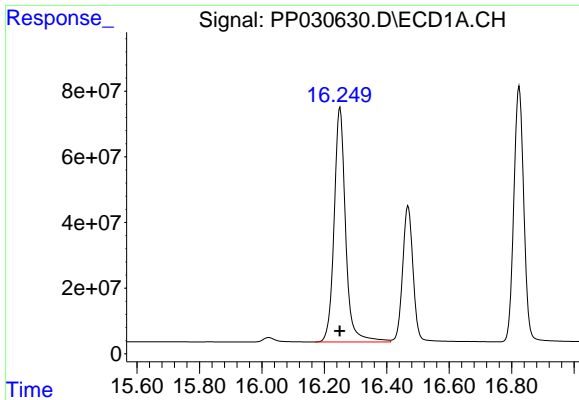
#14 DINOSEB

R.T.: 16.469 min
Delta R.T.: 0.000 min
Response: 968998667
Conc: 482.16 ng/ml



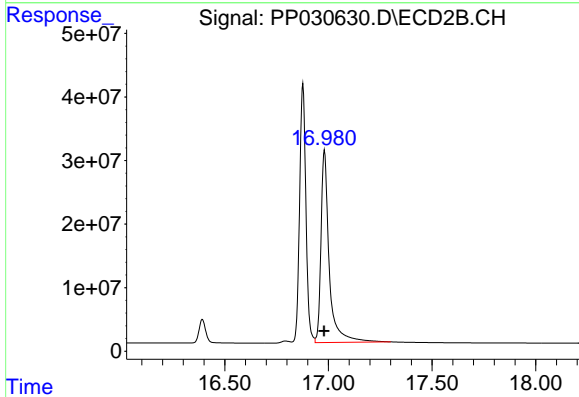
#14 DINOSEB

R.T.: 15.672 min
Delta R.T.: 0.000 min
Response: 487082963
Conc: 478.45 ng/ml



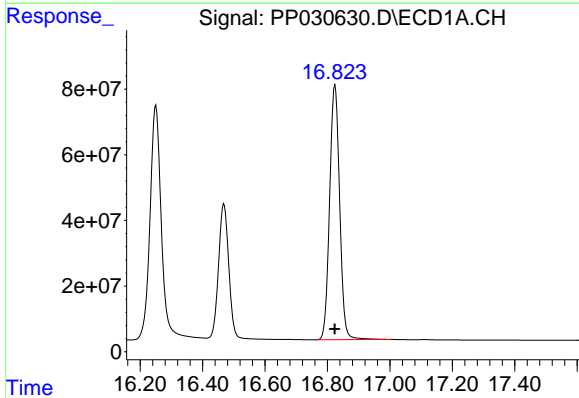
#15 Picloram

R.T.: 16.250 min
Delta R.T.: 0.000 min
Response: 1826521895
Conc: 475.02 ng/ml



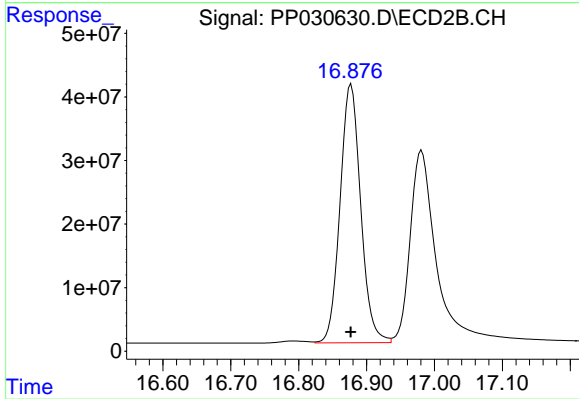
#15 Picloram

R.T.: 16.981 min
Delta R.T.: 0.001 min
Response: 839420685
Conc: 460.32 ng/ml



#16 DCPA

R.T.: 16.824 min
Delta R.T.: 0.000 min
Response: 1731442616
Conc: 485.32 ng/ml



#16 DCPA

R.T.: 16.877 min
Delta R.T.: 0.000 min
Response: 859819767
Conc: 489.62 ng/ml