

Data Path : Z:\pestpcbsrv\HPCHEM1\ECD\_P\Data\PP051425\  
 Data File : PP072053.D  
 Signal(s) : Signal #1: ECD1A.ch Signal #2: ECD2B.ch  
 Acq On : 14 May 2025 18:50  
 Operator : YP\AJ  
 Sample : Q2005-01  
 Misc :  
 ALS Vial : 17 Sample Multiplier: 1

Instrument :  
 ECD\_P  
 ClientSampleId :  
 252806

Integration File signal 1: autoint1.e  
 Integration File signal 2: autoint2.e  
 Quant Time: May 15 02:28:44 2025  
 Quant Method : Z:\pestpcbsrv\HPCHEM1\ECD\_P\methods\PP042225.M  
 Quant Title : GC EXTRACTABLES  
 QLast Update : Wed Apr 23 05:02:06 2025  
 Response via : Initial Calibration  
 Integrator: ChemStation

Volume Inj. : 2 µl  
 Signal #1 Phase : ZB-MR1 Signal #2 Phase: ZB-MR2  
 Signal #1 Info : 30Mx0.32mmx 0.50µ Signal #2 Info : 30M x 0.32mm x 0.25µm

Compound	RT#1	RT#2	Resp#1	Resp#2	ng/ml	ng/ml
-----						
System Monitoring Compounds						
1) SA Tetrachlo...	4.504	3.802	24511051	20604292	12.363	14.627
2) SA Decachlor...	10.216	8.828	8073747	5699768	5.576	6.499

Target Compounds

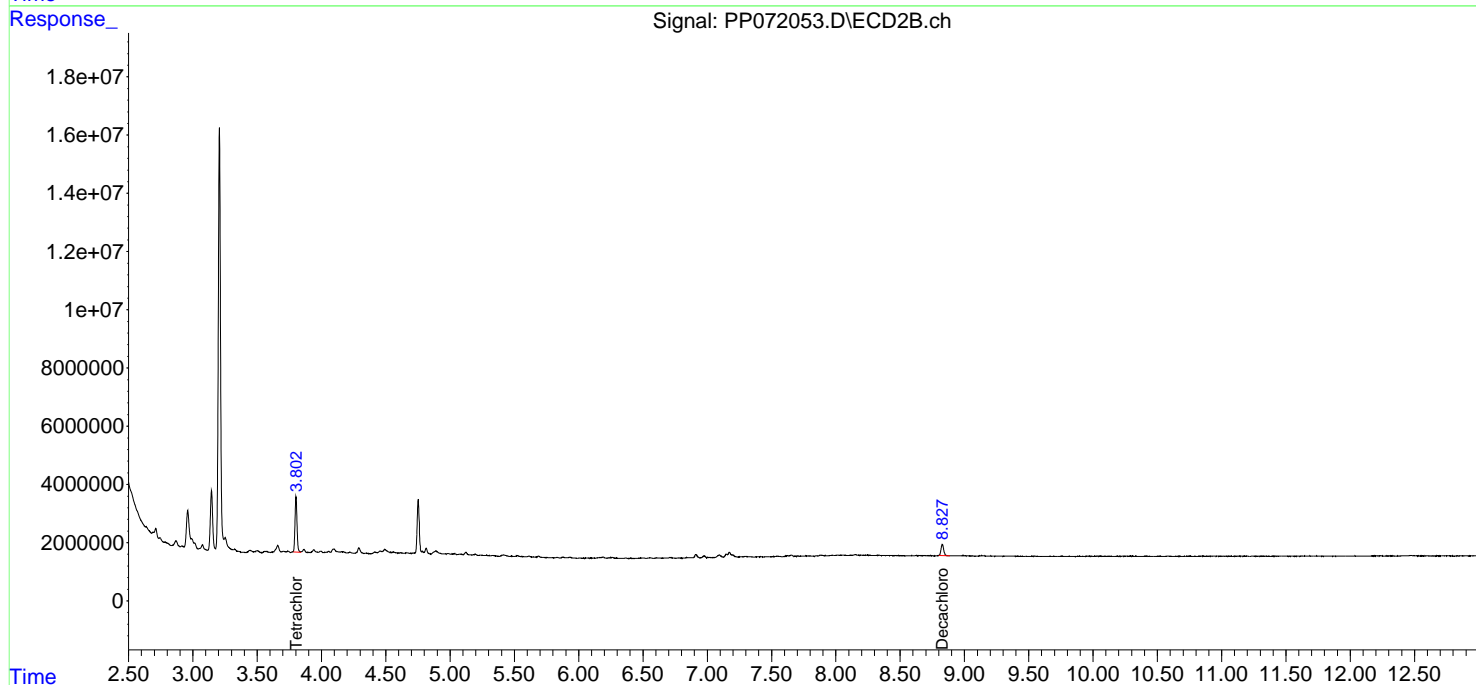
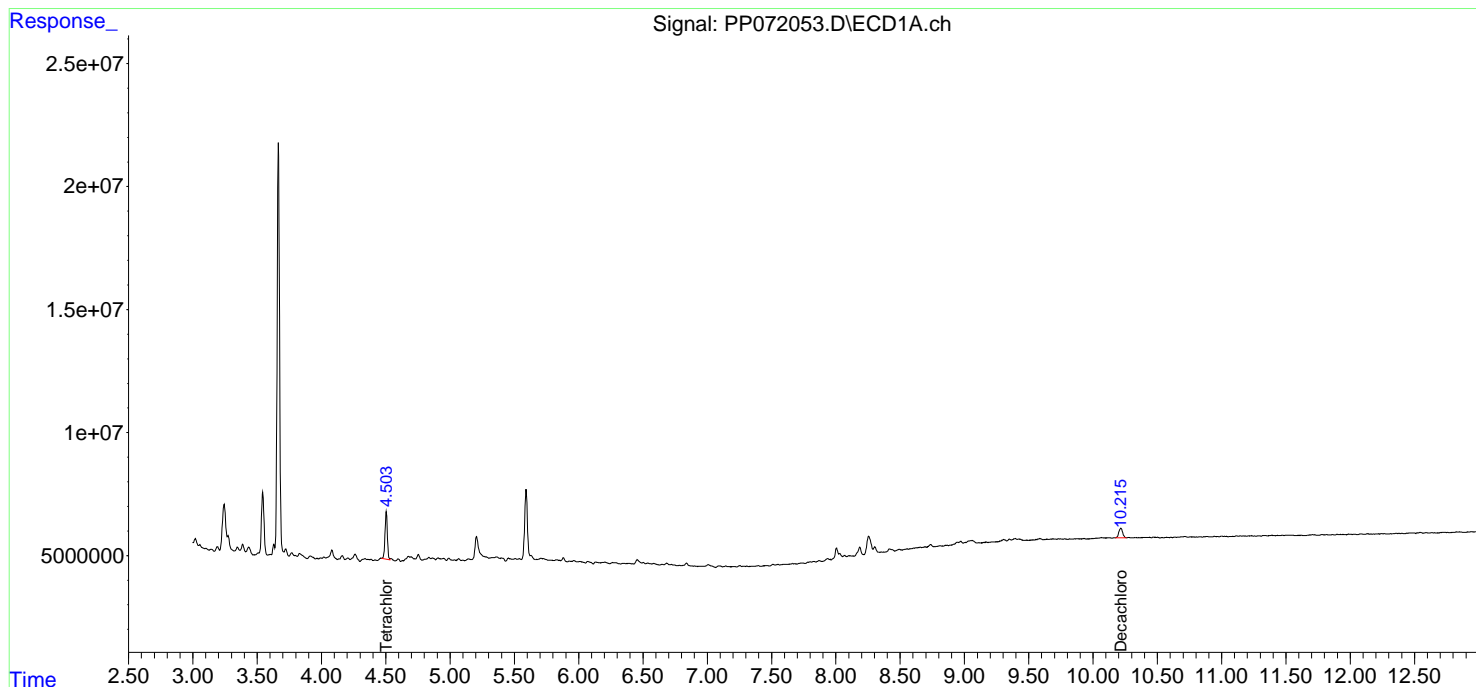
(f)=RT Delta > 1/2 Window (#)=Amounts differ by > 25% (m)=manual int.

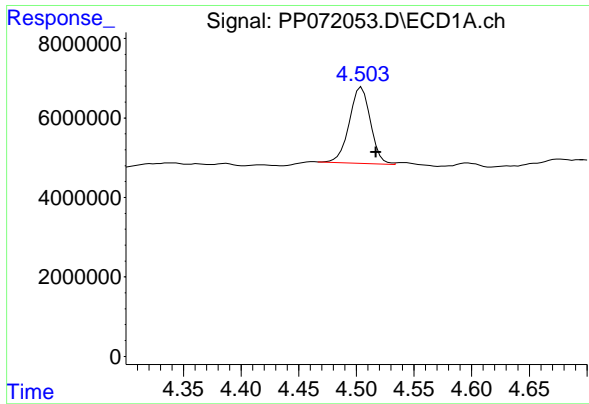
Data Path : Z:\pestpcbsrv\HPCHEM1\ECD\_P\Data\PP051425\  
 Data File : PP072053.D  
 Signal(s) : Signal #1: ECD1A.ch Signal #2: ECD2B.ch  
 Acq On : 14 May 2025 18:50  
 Operator : YP\AJ  
 Sample : Q2005-01  
 Misc :  
 ALS Vial : 17 Sample Multiplier: 1

Instrument :  
 ECD\_P  
 ClientSampleId :  
 252806

Integration File signal 1: autoint1.e  
 Integration File signal 2: autoint2.e  
 Quant Time: May 15 02:28:44 2025  
 Quant Method : Z:\pestpcbsrv\HPCHEM1\ECD\_P\methods\PP042225.M  
 Quant Title : GC EXTRACTABLES  
 QLast Update : Wed Apr 23 05:02:06 2025  
 Response via : Initial Calibration  
 Integrator: ChemStation

Volume Inj. : 2 µl  
 Signal #1 Phase : ZB-MR1 Signal #2 Phase: ZB-MR2  
 Signal #1 Info : 30Mx0.32mmx 0.50µm Signal #2 Info : 30M x 0.32mm x 0.25µm

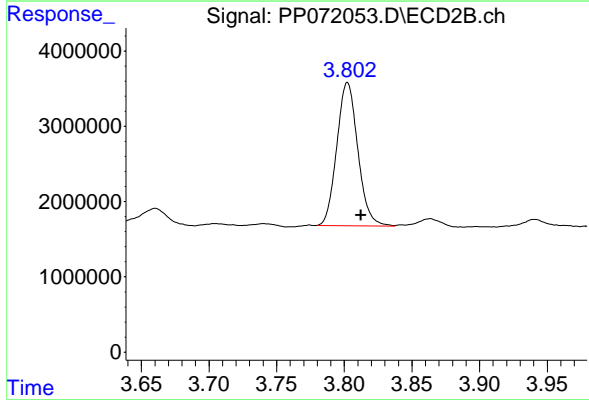




#1 Tetrachloro-m-xylene

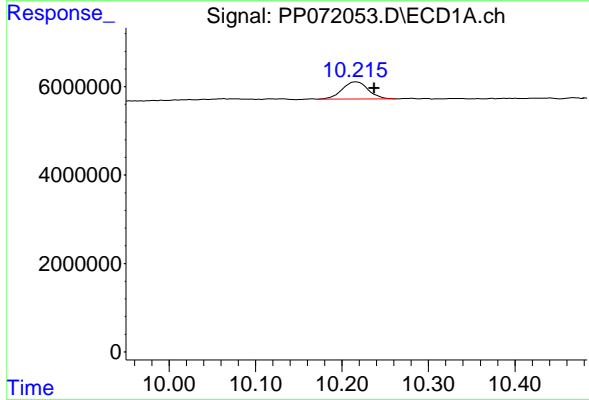
R.T.: 4.504 min  
 Delta R.T.: -0.013 min  
 Response: 24511051  
 Conc: 12.36 ng/ml

Instrument :  
 ECD\_P  
 ClientSampleId :  
 252806



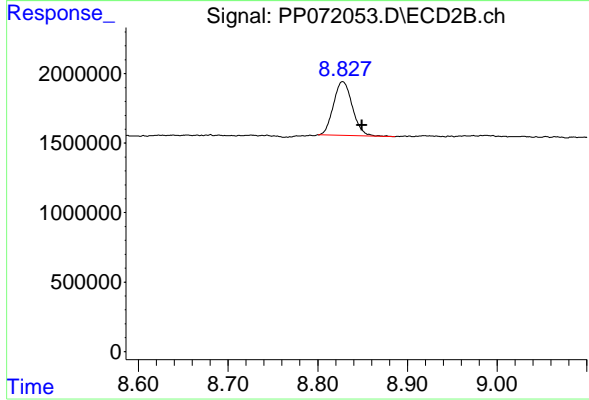
#1 Tetrachloro-m-xylene

R.T.: 3.802 min  
 Delta R.T.: -0.010 min  
 Response: 20604292  
 Conc: 14.63 ng/ml



#2 Decachlorobiphenyl

R.T.: 10.216 min  
 Delta R.T.: -0.021 min  
 Response: 8073747  
 Conc: 5.58 ng/ml



#2 Decachlorobiphenyl

R.T.: 8.828 min  
 Delta R.T.: -0.021 min  
 Response: 5699768  
 Conc: 6.50 ng/ml