

Data Path : Z:\pestpcbsrv\HPCHEM1\ECD_P\Data\PP051425\
 Data File : PP072076.D
 Signal(s) : Signal #1: ECD1A.ch Signal #2: ECD2B.ch
 Acq On : 15 May 2025 04:05
 Operator : YP\AJ
 Sample : AR1660CCC500
 Misc :
 ALS Vial : 3 Sample Multiplier: 1

Instrument :
 ECD_P
ClientSampleId :
 AR1660CCC500

Manual Integrations
APPROVED
 Reviewed By :Yogesh Patel 05/15/2025
 Supervised By :mohammad ahmed 05/19/2025

Integration File signal 1: autoint1.e
 Integration File signal 2: autoint2.e
 Quant Time: May 15 04:33:24 2025
 Quant Method : Z:\pestpcbsrv\HPCHEM1\ECD_P\methods\PP042225.M
 Quant Title : GC EXTRACTABLES
 QLast Update : Wed Apr 23 05:02:06 2025
 Response via : Initial Calibration
 Integrator: ChemStation

Volume Inj. : 2 µl
 Signal #1 Phase : ZB-MR1 Signal #2 Phase: ZB-MR2
 Signal #1 Info : 30Mx0.32mmx 0.50µ Signal #2 Info : 30M x 0.32mm x 0.25µm

Compound	RT#1	RT#2	Resp#1	Resp#2	ng/ml	ng/ml

System Monitoring Compounds						
1) SA Tetrachlo...	4.504	3.801	98232592	74632414	49.546	52.982m
2) SA Decachlor...	10.213	8.826	76147279	49297981	52.588	56.209m
Target Compounds						
3) L1 AR-1016-1	5.656	4.884	29232579	29445208	435.983m	550.033m#
4) L1 AR-1016-2	5.678	4.902	51065295	39536725	497.575m	517.742m
5) L1 AR-1016-3	5.741	5.079	30746257	22376312	498.746	530.114m
6) L1 AR-1016-4	5.838	5.121	25173526	17072167	490.730	495.047
7) L1 AR-1016-5	6.129	5.335	23322539	23702411	483.485m	533.270
31) L7 AR-1260-1	7.249	6.368	46333177	39559015	482.514	547.157
32) L7 AR-1260-2	7.503	6.557	68907153	48028262	481.608	549.137
33) L7 AR-1260-3	7.861	6.710	55735589	42712605	497.177	544.890
34) L7 AR-1260-4	8.086	7.180	53710725	35524594	475.885	562.894
35) L7 AR-1260-5	8.405	7.422	114.7E6	84111823	506.250	557.855

(f)=RT Delta > 1/2 Window (#)=Amounts differ by > 25% (m)=manual int.

Data Path : Z:\pestpcbsrv\HPCHEM1\ECD_P\Data\PP051425\
 Data File : PP072076.D
 Signal(s) : Signal #1: ECD1A.ch Signal #2: ECD2B.ch
 Acq On : 15 May 2025 04:05
 Operator : YP\AJ
 Sample : AR1660CCC500
 Misc :
 ALS Vial : 3 Sample Multiplier: 1

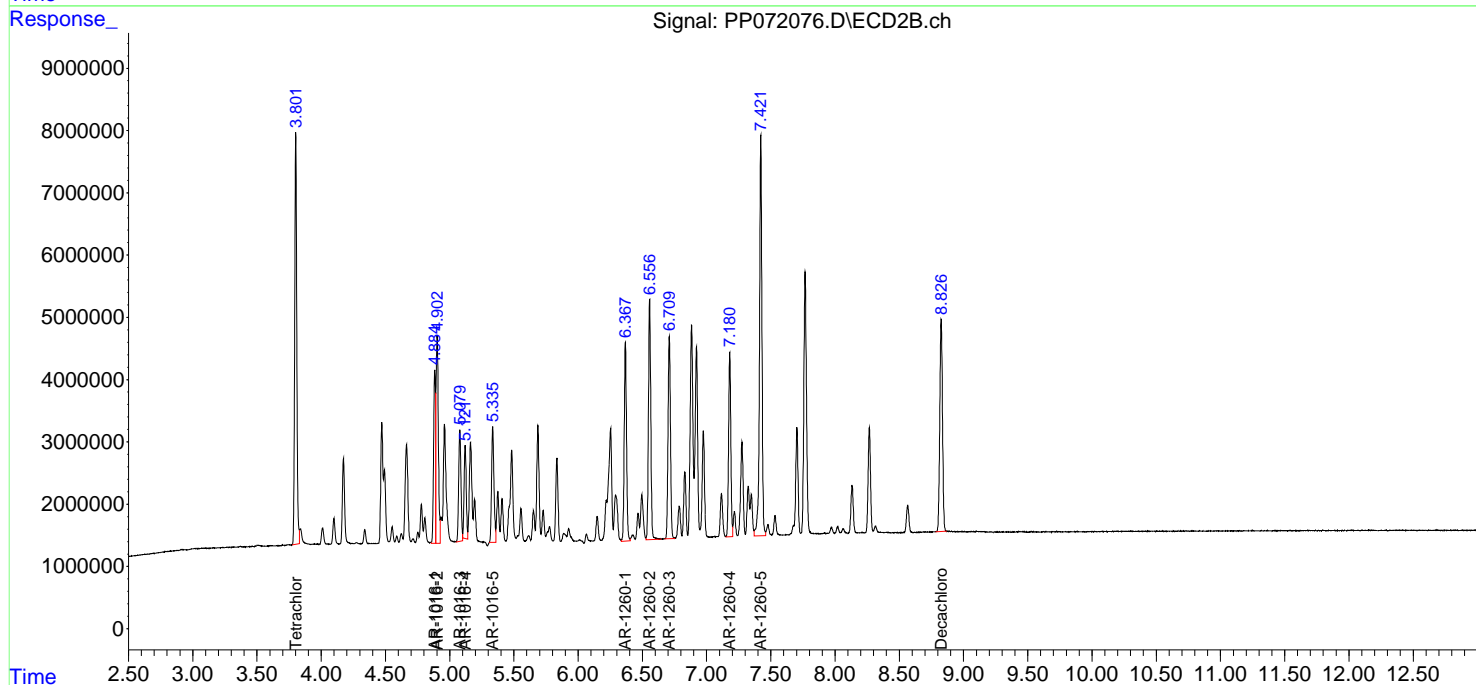
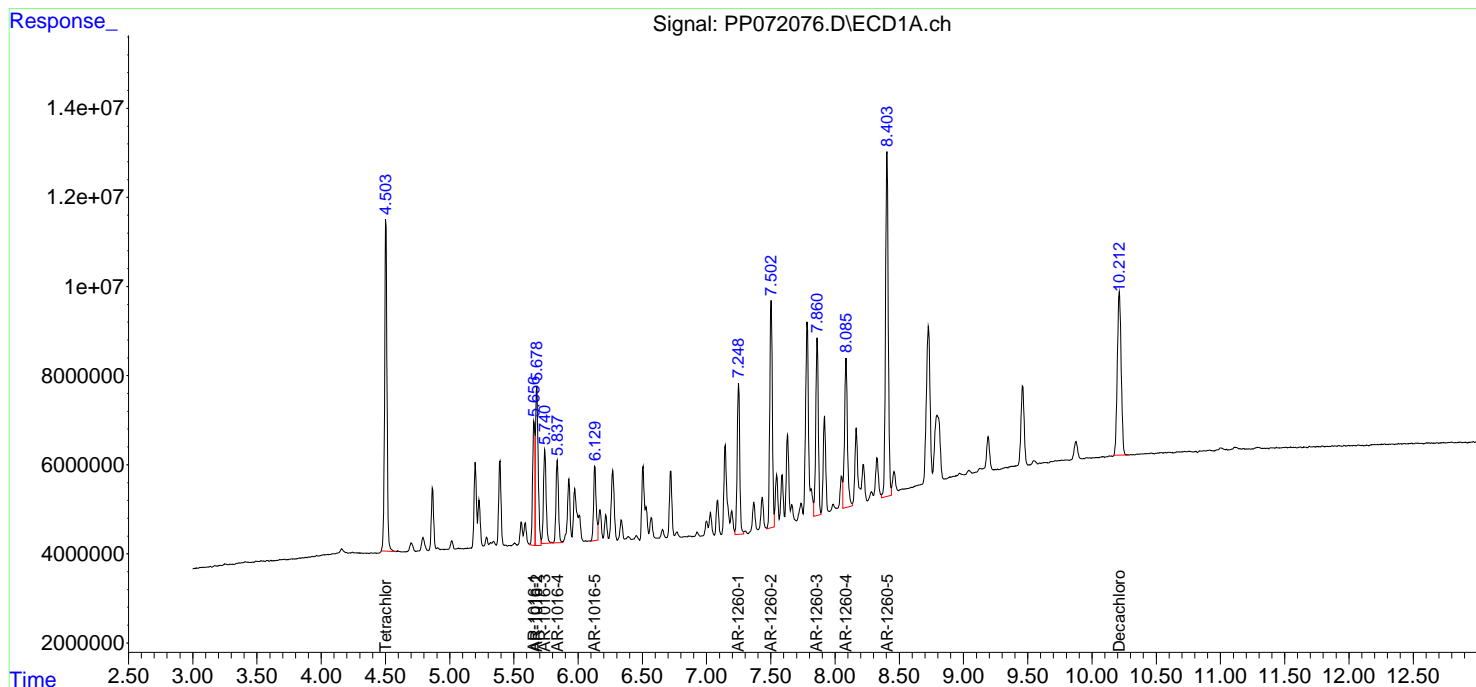
Instrument :
 ECD_P
 ClientSampleId :
 AR1660CCC500

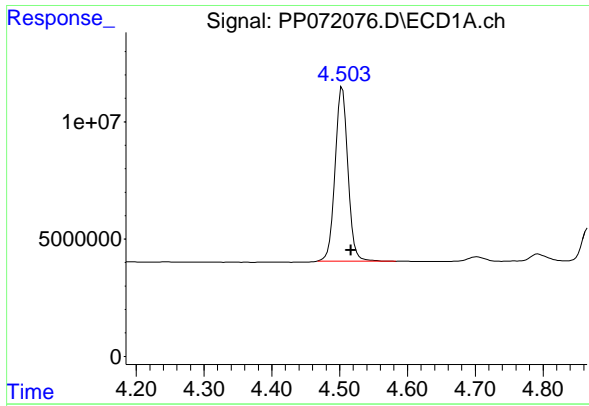
Manual Integrations
 APPROVED

Reviewed By :Yogesh Patel 05/15/2025
 Supervised By :mohammad ahmed 05/19/2025

Integration File signal 1: autoint1.e
 Integration File signal 2: autoint2.e
 Quant Time: May 15 04:33:24 2025
 Quant Method : Z:\pestpcbsrv\HPCHEM1\ECD_P\methods\PP042225.M
 Quant Title : GC EXTRACTABLES
 QLast Update : Wed Apr 23 05:02:06 2025
 Response via : Initial Calibration
 Integrator: ChemStation

Volume Inj. : 2 µl
 Signal #1 Phase : ZB-MR1 Signal #2 Phase: ZB-MR2
 Signal #1 Info : 30Mx0.32mmx 0.50µ Signal #2 Info : 30M x 0.32mm x 0.25µm





#1 Tetrachloro-m-xylene

R.T.: 4.504 min
 Delta R.T.: -0.013 min
 Response: 98232592
 Conc: 49.55 ng/ml

Instrument :

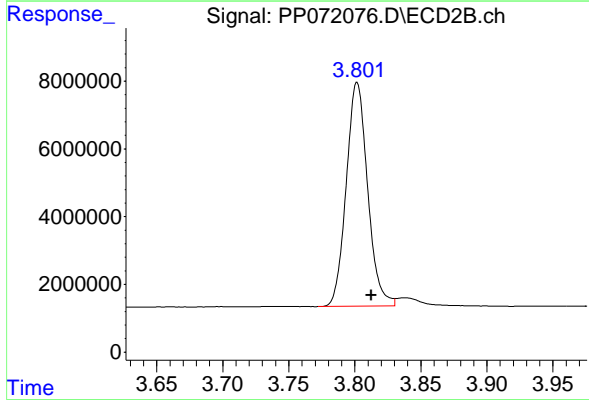
ECD_P

Client Sample Id :

AR1660CCC500

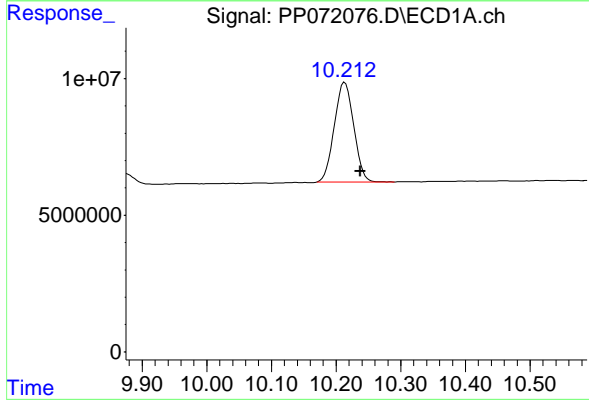
Manual Integrations
 APPROVED

Reviewed By :Yogesh Patel 05/15/2025
 Supervised By :mohammad ahmed 05/19/2025



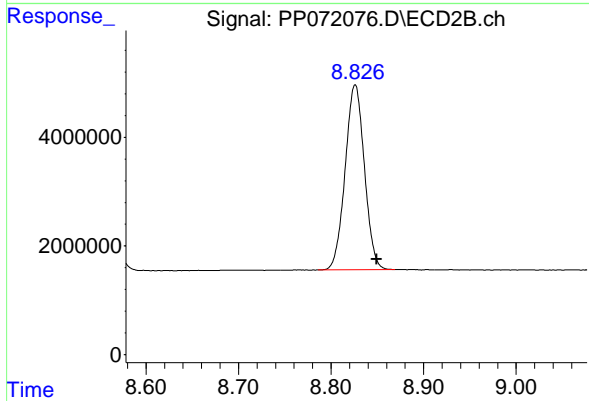
#1 Tetrachloro-m-xylene

R.T.: 3.801 min
 Delta R.T.: -0.011 min
 Response: 74632414
 Conc: 52.98 ng/ml m



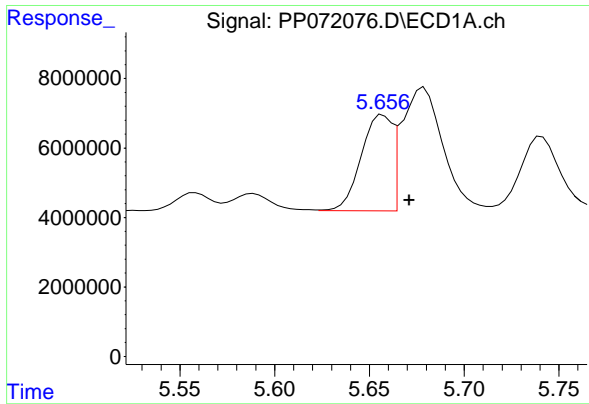
#2 Decachlorobiphenyl

R.T.: 10.213 min
 Delta R.T.: -0.024 min
 Response: 76147279
 Conc: 52.59 ng/ml



#2 Decachlorobiphenyl

R.T.: 8.826 min
 Delta R.T.: -0.023 min
 Response: 49297981
 Conc: 56.21 ng/ml m



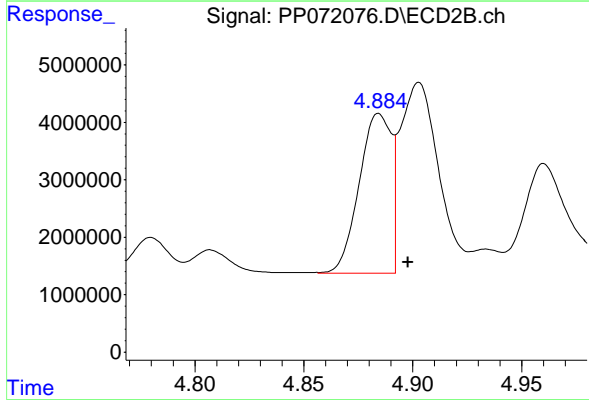
#3 AR-1016-1

R.T.: 5.656 min
 Delta R.T.: -0.015 min
 Response: 29232579
 Conc: 435.98 ng/ml

Instrument : ECD_P
 ClientSampleId : AR1660CCC500

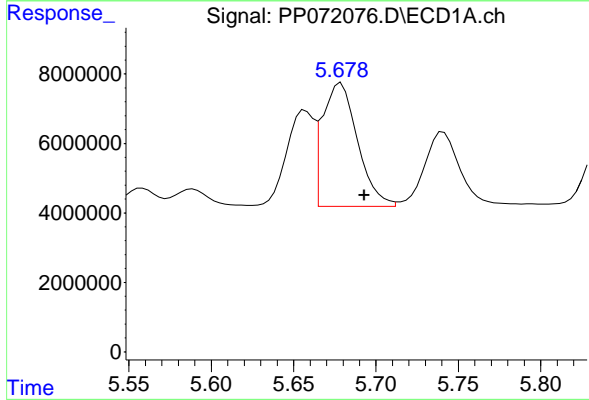
Manual Integrations
 APPROVED

Reviewed By :Yogesh Patel 05/15/2025
 Supervised By :mohammad ahmed 05/19/2025



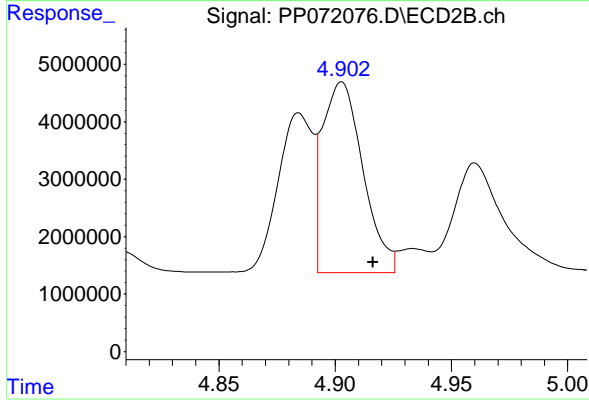
#3 AR-1016-1

R.T.: 4.884 min
 Delta R.T.: -0.014 min
 Response: 29445208
 Conc: 550.03 ng/ml m



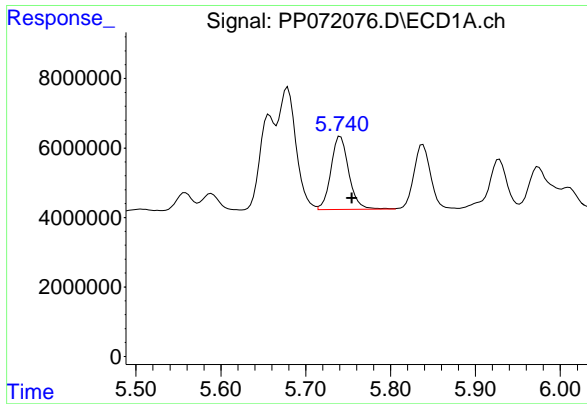
#4 AR-1016-2

R.T.: 5.678 min
 Delta R.T.: -0.015 min
 Response: 51065295
 Conc: 497.58 ng/ml m



#4 AR-1016-2

R.T.: 4.902 min
 Delta R.T.: -0.014 min
 Response: 39536725
 Conc: 517.74 ng/ml m



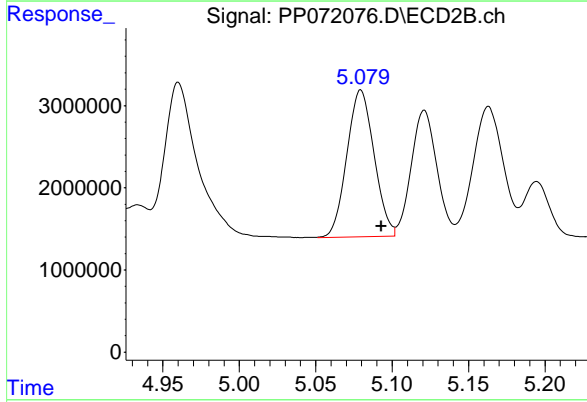
#5 AR-1016-3

R.T.: 5.741 min
 Delta R.T.: -0.014 min
 Response: 30746257
 Conc: 498.75 ng/ml

Instrument :
 ECD_P
 ClientSampleId :
 AR1660CCC500

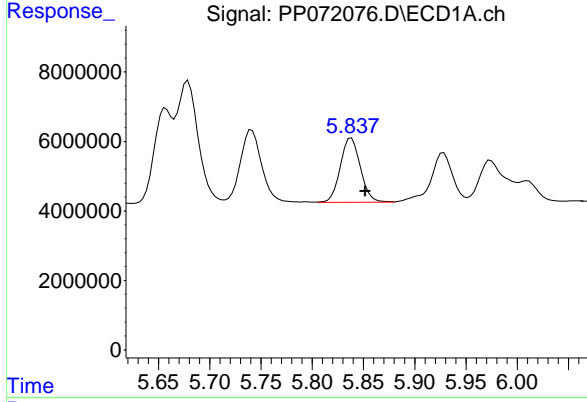
Manual Integrations
 APPROVED

Reviewed By :Yogesh Patel 05/15/2025
 Supervised By :mohammad ahmed 05/19/2025



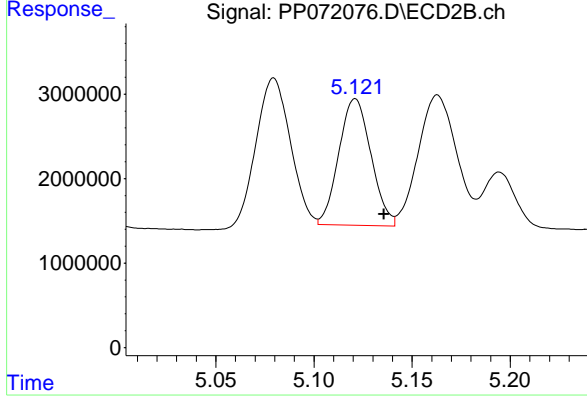
#5 AR-1016-3

R.T.: 5.079 min
 Delta R.T.: -0.014 min
 Response: 22376312
 Conc: 530.11 ng/ml m



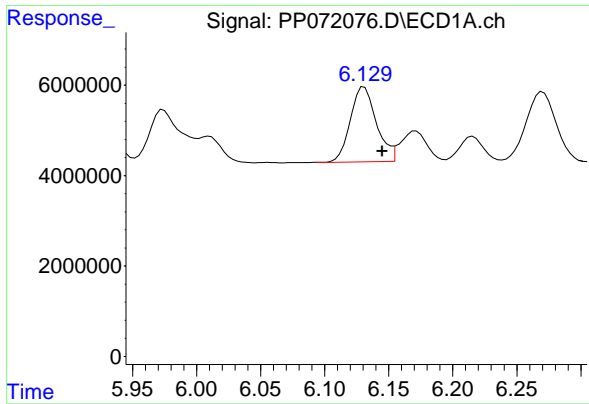
#6 AR-1016-4

R.T.: 5.838 min
 Delta R.T.: -0.014 min
 Response: 25173526
 Conc: 490.73 ng/ml



#6 AR-1016-4

R.T.: 5.121 min
 Delta R.T.: -0.015 min
 Response: 17072167
 Conc: 495.05 ng/ml



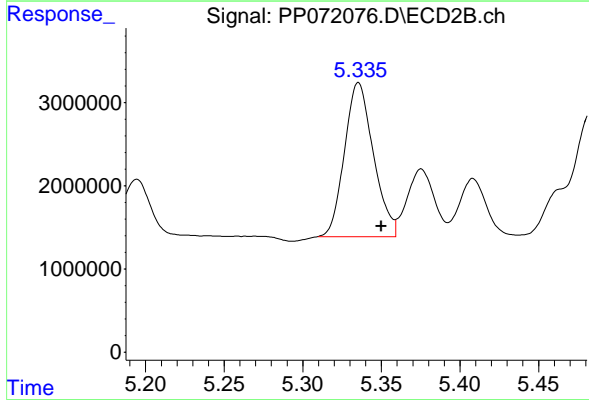
#7 AR-1016-5

R.T.: 6.129 min
 Delta R.T.: -0.016 min
 Response: 23322539
 Conc: 483.49 ng/ml

Instrument : ECD_P
 Client Sample Id : AR1660CCC500

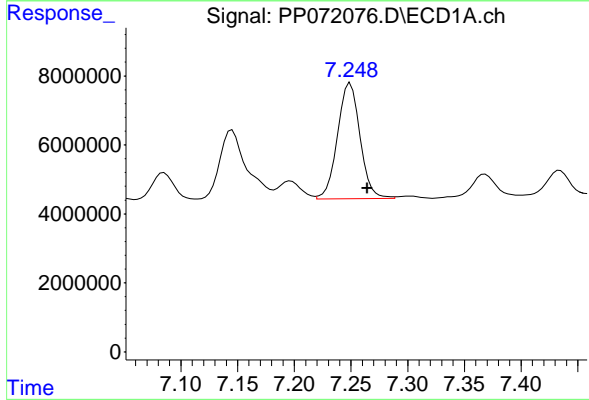
Manual Integrations
 APPROVED

Reviewed By :Yogesh Patel 05/15/2025
 Supervised By :mohammad ahmed 05/19/2025



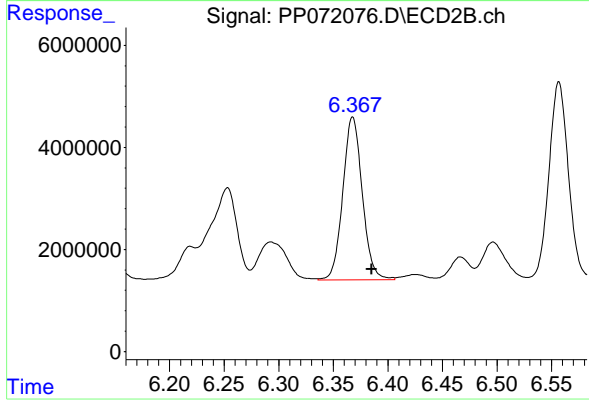
#7 AR-1016-5

R.T.: 5.335 min
 Delta R.T.: -0.014 min
 Response: 23702411
 Conc: 533.27 ng/ml



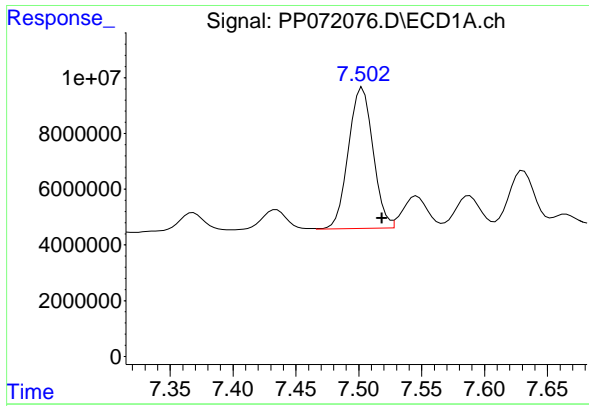
#31 AR-1260-1

R.T.: 7.249 min
 Delta R.T.: -0.015 min
 Response: 46333177
 Conc: 482.51 ng/ml



#31 AR-1260-1

R.T.: 6.368 min
 Delta R.T.: -0.017 min
 Response: 39559015
 Conc: 547.16 ng/ml



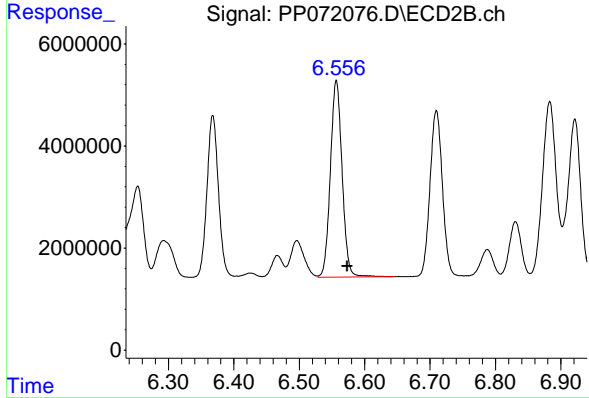
#32 AR-1260-2

R.T.: 7.503 min
 Delta R.T.: -0.015 min
 Response: 68907153
 Conc: 481.61 ng/ml

Instrument : ECD_P
 ClientSampleId : AR1660CCC500

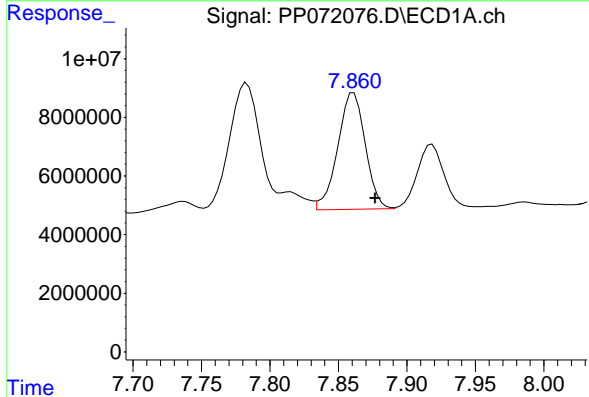
Manual Integrations
 APPROVED

Reviewed By :Yogesh Patel 05/15/2025
 Supervised By :mohammad ahmed 05/19/2025



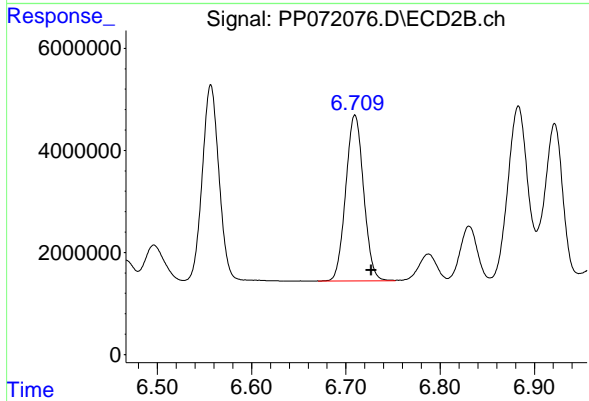
#32 AR-1260-2

R.T.: 6.557 min
 Delta R.T.: -0.017 min
 Response: 48028262
 Conc: 549.14 ng/ml



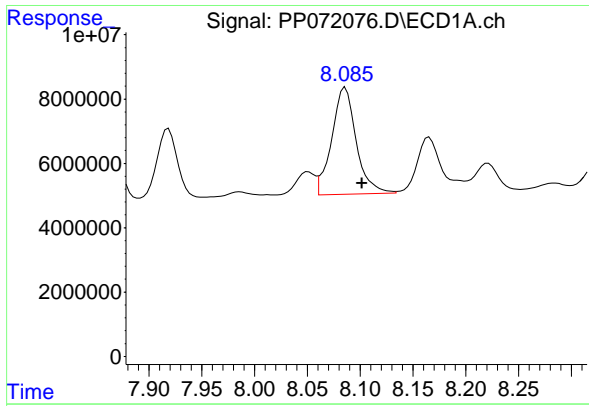
#33 AR-1260-3

R.T.: 7.861 min
 Delta R.T.: -0.016 min
 Response: 55735589
 Conc: 497.18 ng/ml



#33 AR-1260-3

R.T.: 6.710 min
 Delta R.T.: -0.017 min
 Response: 42712605
 Conc: 544.89 ng/ml



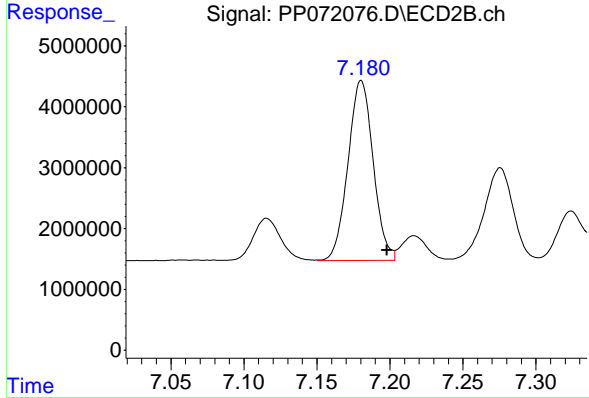
#34 AR-1260-4

R.T.: 8.086 min
 Delta R.T.: -0.016 min
 Response: 53710725
 Conc: 475.89 ng/ml

Instrument : ECD_P
 Client Sample Id : AR1660CCC500

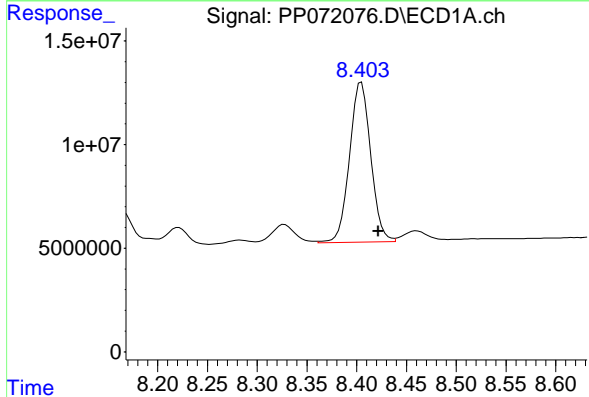
Manual Integrations
 APPROVED

Reviewed By :Yogesh Patel 05/15/2025
 Supervised By :mohammad ahmed 05/19/2025



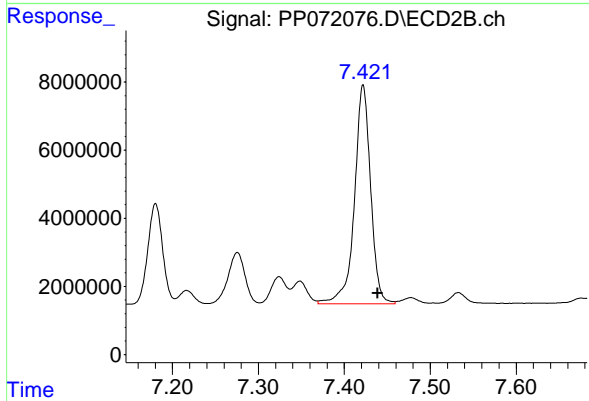
#34 AR-1260-4

R.T.: 7.180 min
 Delta R.T.: -0.018 min
 Response: 35524594
 Conc: 562.89 ng/ml



#35 AR-1260-5

R.T.: 8.405 min
 Delta R.T.: -0.017 min
 Response: 114702594
 Conc: 506.25 ng/ml



#35 AR-1260-5

R.T.: 7.422 min
 Delta R.T.: -0.017 min
 Response: 84111823
 Conc: 557.85 ng/ml