

Data Path : Z:\pestpcbsrv\HPCHEM1\ECD_P\Data\PP051425\
 Data File : PP072078.D
 Signal(s) : Signal #1: ECD1A.ch Signal #2: ECD2B.ch
 Acq On : 15 May 2025 04:54
 Operator : YP\AJ
 Sample : AR1248CCC500
 Misc :
 ALS Vial : 5 Sample Multiplier: 1

Instrument :
 ECD_P
ClientSampleId :
 AR1248CCC500

Manual Integrations
APPROVED
 Reviewed By :Yogesh Patel 05/15/2025
 Supervised By :mohammad ahmed 05/19/2025

Integration File signal 1: autoint1.e
 Integration File signal 2: autoint2.e
 Quant Time: May 15 05:36:59 2025
 Quant Method : Z:\pestpcbsrv\HPCHEM1\ECD_P\methods\PP042225.M
 Quant Title : GC EXTRACTABLES
 QLast Update : Wed Apr 23 05:02:06 2025
 Response via : Initial Calibration
 Integrator: ChemStation

Volume Inj. : 2 µl
 Signal #1 Phase : ZB-MR1 Signal #2 Phase: ZB-MR2
 Signal #1 Info : 30Mx0.32mmx 0.50µ Signal #2 Info : 30M x 0.32mm x 0.25µm

Compound	RT#1	RT#2	Resp#1	Resp#2	ng/ml	ng/ml

System Monitoring Compounds						
1) SA Tetrachlo...	4.507	3.801	102.3E6	83866294	51.581	59.537m
2) SA Decachlor...	10.215	8.826	79894738	50072328	55.176	57.092m
Target Compounds						
21) L5 AR-1248-1	5.660	4.884	22270726	21120997	518.661	584.962m
22) L5 AR-1248-2	5.930	5.121	31216382	27079168	516.550	553.060
23) L5 AR-1248-3	6.133	5.164	34176385	28751832	511.742	562.818
24) L5 AR-1248-4	6.533	5.336	43152684	33856701	510.013	558.164
25) L5 AR-1248-5	6.571	5.728	40492372	32514291	509.669	557.794

(f)=RT Delta > 1/2 Window (#)=Amounts differ by > 25% (m)=manual int.

Data Path : Z:\pestpcbsrv\HPCHEM1\ECD_P\Data\PP051425\
 Data File : PP072078.D
 Signal(s) : Signal #1: ECD1A.ch Signal #2: ECD2B.ch
 Acq On : 15 May 2025 04:54
 Operator : YP\AJ
 Sample : AR1248CCC500
 Misc :
 ALS Vial : 5 Sample Multiplier: 1

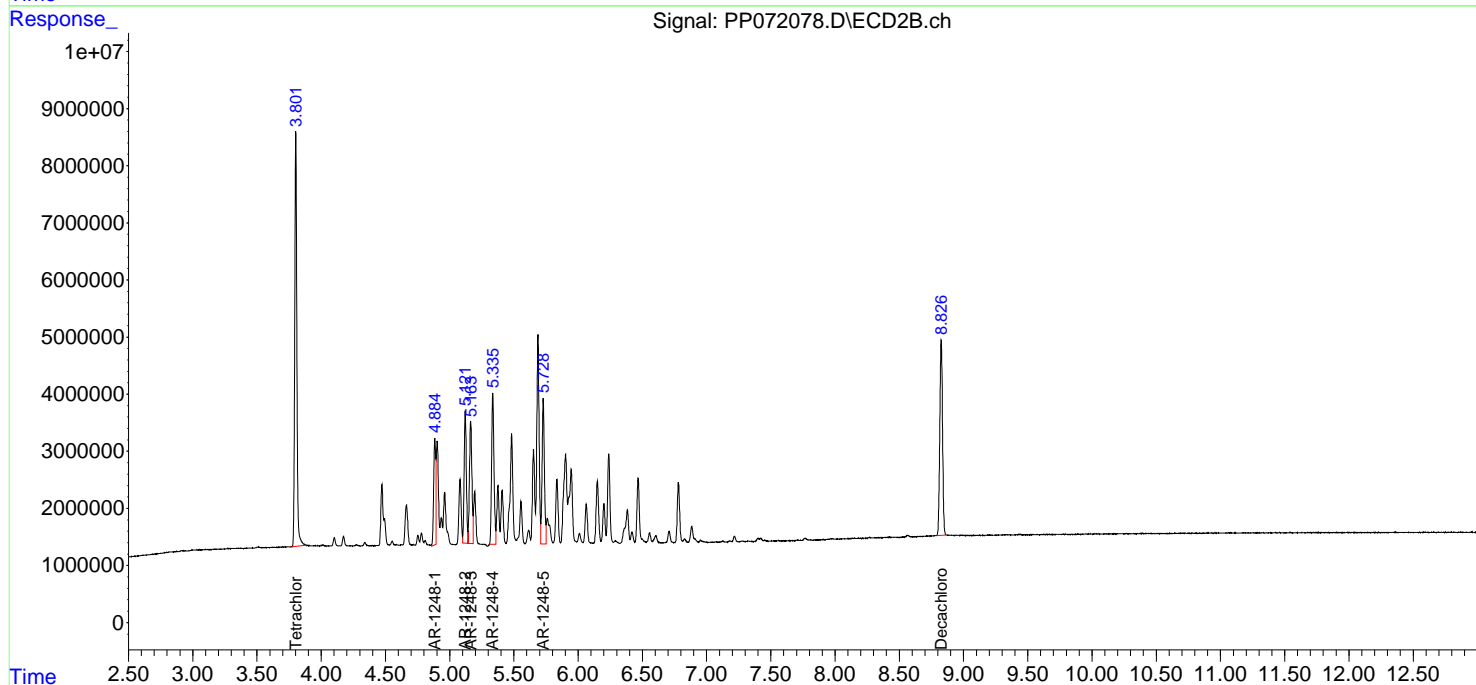
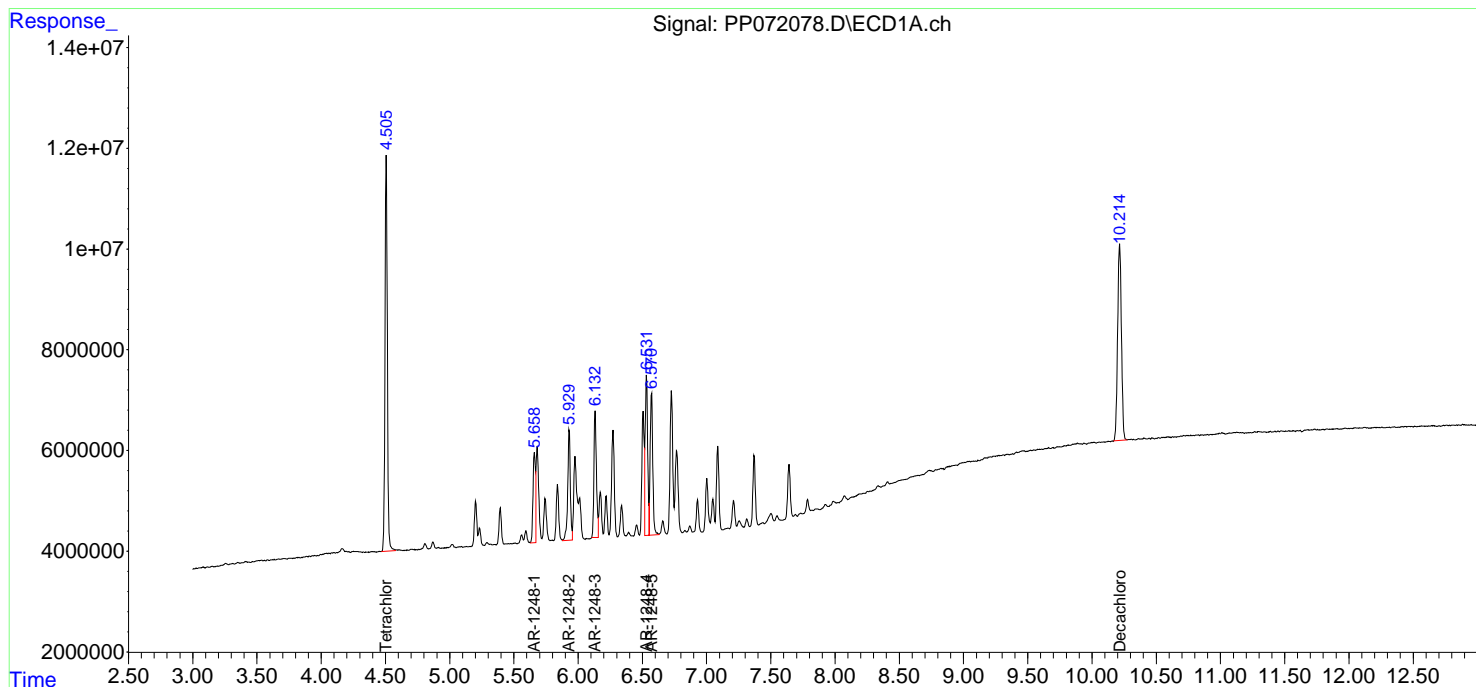
Instrument :
 ECD_P
ClientSampleId :
 AR1248CCC500

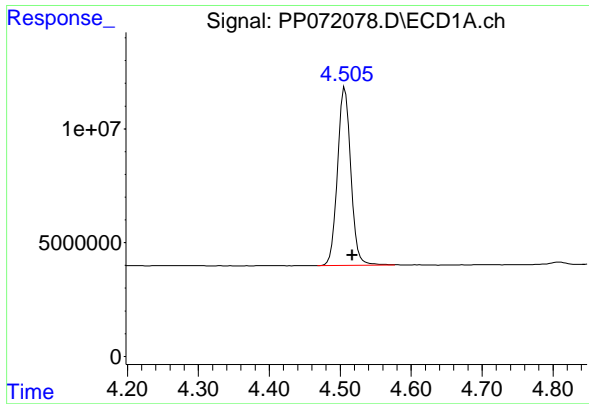
Manual Integrations
APPROVED

Reviewed By :Yogesh Patel 05/15/2025
 Supervised By :mohammad ahmed 05/19/2025

Integration File signal 1: autoint1.e
 Integration File signal 2: autoint2.e
 Quant Time: May 15 05:36:59 2025
 Quant Method : Z:\pestpcbsrv\HPCHEM1\ECD_P\methods\PP042225.M
 Quant Title : GC EXTRACTABLES
 QLast Update : Wed Apr 23 05:02:06 2025
 Response via : Initial Calibration
 Integrator: ChemStation

Volume Inj. : 2 µl
 Signal #1 Phase : ZB-MR1 Signal #2 Phase: ZB-MR2
 Signal #1 Info : 30Mx0.32mmx 0.50µm Signal #2 Info : 30M x 0.32mm x 0.25µm





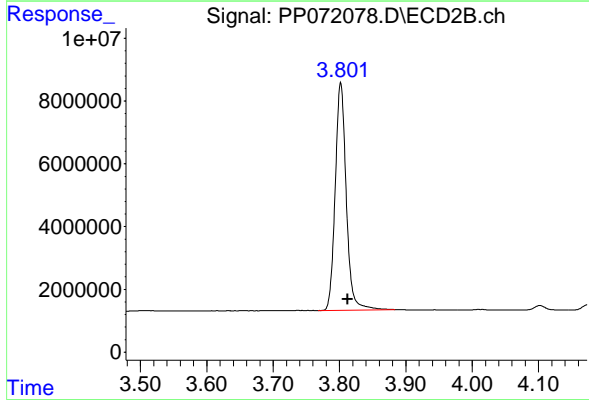
#1 Tetrachloro-m-xylene

R.T.: 4.507 min
 Delta R.T.: -0.010 min
 Response: 102266972
 Conc: 51.58 ng/ml

Instrument : ECD_P
 ClientSampleId : AR1248CCC500

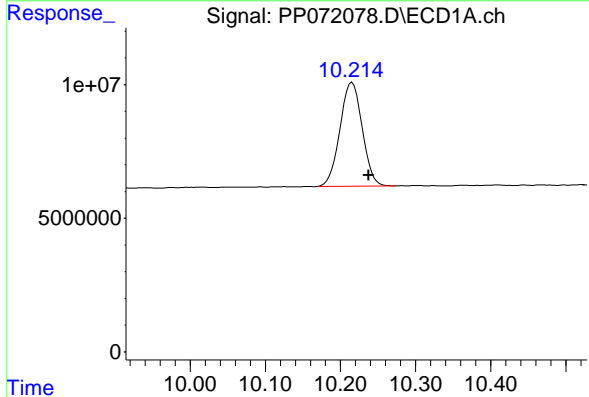
Manual Integrations
 APPROVED

Reviewed By :Yogesh Patel 05/15/2025
 Supervised By :mohammad ahmed 05/19/2025



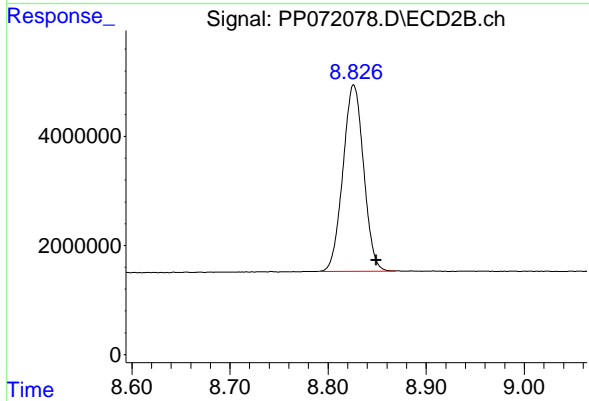
#1 Tetrachloro-m-xylene

R.T.: 3.801 min
 Delta R.T.: -0.011 min
 Response: 83866294
 Conc: 59.54 ng/ml m



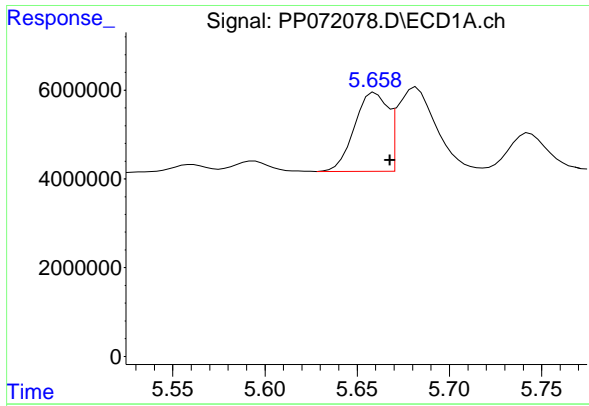
#2 Decachlorobiphenyl

R.T.: 10.215 min
 Delta R.T.: -0.022 min
 Response: 79894738
 Conc: 55.18 ng/ml



#2 Decachlorobiphenyl

R.T.: 8.826 min
 Delta R.T.: -0.024 min
 Response: 50072328
 Conc: 57.09 ng/ml m



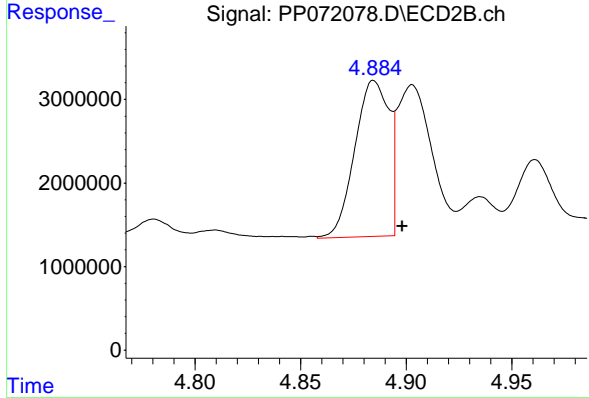
#21 AR-1248-1

R.T.: 5.660 min
 Delta R.T.: -0.008 min
 Response: 22270726
 Conc: 518.66 ng/ml

Instrument :
 ECD_P
 ClientSampleId :
 AR1248CCC500

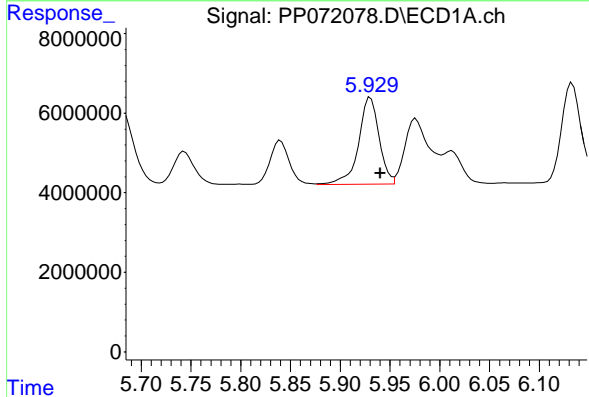
Manual Integrations
 APPROVED

Reviewed By :Yogesh Patel 05/15/2025
 Supervised By :mohammad ahmed 05/19/2025



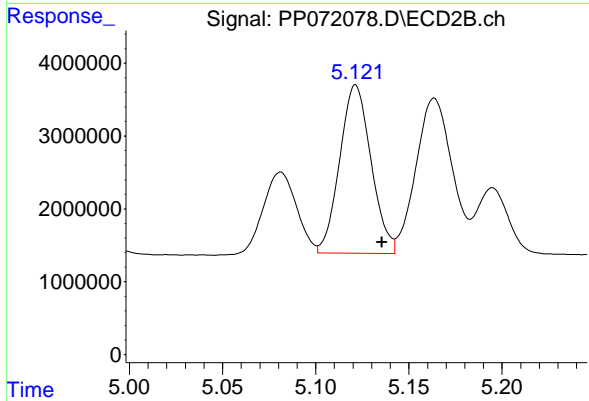
#21 AR-1248-1

R.T.: 4.884 min
 Delta R.T.: -0.014 min
 Response: 21120997
 Conc: 584.96 ng/ml m



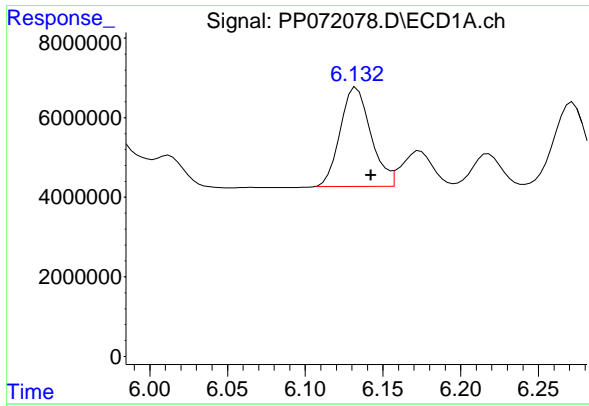
#22 AR-1248-2

R.T.: 5.930 min
 Delta R.T.: -0.010 min
 Response: 31216382
 Conc: 516.55 ng/ml



#22 AR-1248-2

R.T.: 5.121 min
 Delta R.T.: -0.014 min
 Response: 27079168
 Conc: 553.06 ng/ml



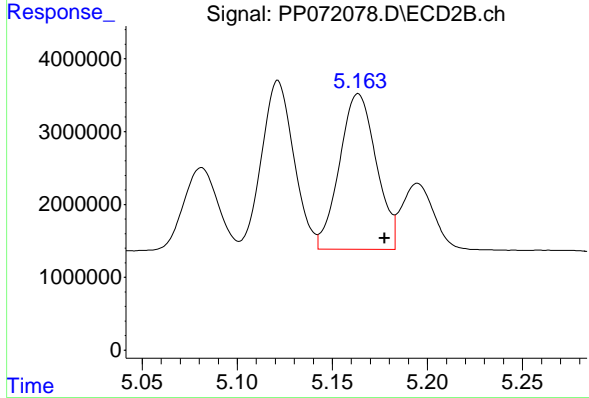
#23 AR-1248-3

R.T.: 6.133 min
 Delta R.T.: -0.009 min
 Response: 34176385
 Conc: 511.74 ng/ml

Instrument : ECD_P
 Client Sample Id : AR1248CCC500

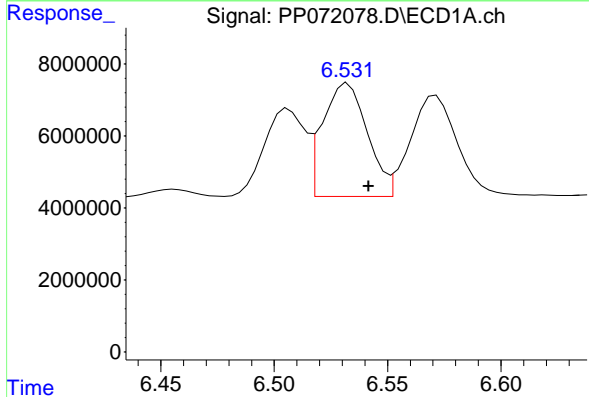
Manual Integrations
 APPROVED

Reviewed By :Yogesh Patel 05/15/2025
 Supervised By :mohammad ahmed 05/19/2025



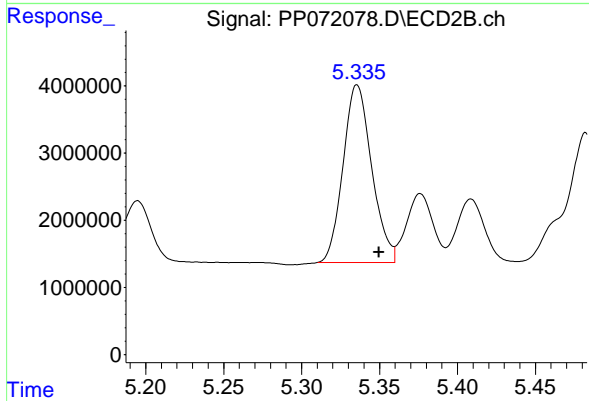
#23 AR-1248-3

R.T.: 5.164 min
 Delta R.T.: -0.014 min
 Response: 28751832
 Conc: 562.82 ng/ml



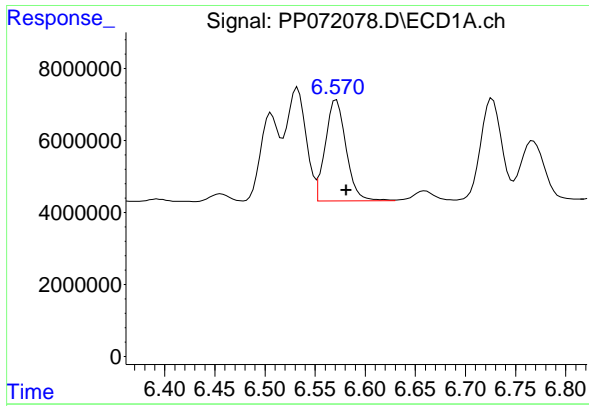
#24 AR-1248-4

R.T.: 6.533 min
 Delta R.T.: -0.009 min
 Response: 43152684
 Conc: 510.01 ng/ml



#24 AR-1248-4

R.T.: 5.336 min
 Delta R.T.: -0.014 min
 Response: 33856701
 Conc: 558.16 ng/ml



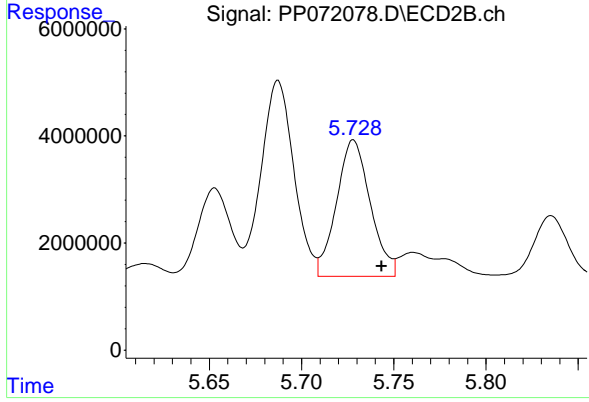
#25 AR-1248-5

R.T.: 6.571 min
 Delta R.T.: -0.010 min
 Response: 40492372
 Conc: 509.67 ng/ml

Instrument : ECD_P
 ClientSampleId : AR1248CCC500

Manual Integrations
 APPROVED

Reviewed By :Yogesh Patel 05/15/2025
 Supervised By :mohammad ahmed 05/19/2025



#25 AR-1248-5

R.T.: 5.728 min
 Delta R.T.: -0.015 min
 Response: 32514291
 Conc: 557.79 ng/ml