

Data Path : Z:\pestpcbsrv\HPCHEM1\ECD_P\Data\PP051624\
 Data File : PP065015.D
 Signal(s) : Signal #1: ECD1A.ch Signal #2: ECD2B.ch
 Acq On : 16 May 2024 20:49
 Operator : YP\AJ
 Sample : AR1268ICC1000
 Misc :
 ALS Vial : 26 Sample Multiplier: 1

Instrument :
 ECD_P
ClientSampleId :
 AR1268ICC1000

Integration File signal 1: autoint1.e
 Integration File signal 2: autoint2.e
 Quant Time: May 17 04:54:18 2024
 Quant Method : Z:\pestpcbsrv\HPCHEM1\ECD_P\methods\PP051624.M
 Quant Title : GC EXTRACTABLES
 QLast Update : Fri May 17 04:50:34 2024
 Response via : Initial Calibration
 Integrator: ChemStation

Volume Inj. : 2 µl
 Signal #1 Phase : ZB-MR1 Signal #2 Phase: ZB-MR2
 Signal #1 Info : 30Mx0.32mmx 0.50µ Signal #2 Info : 30M x 0.32mm x 0.25µm

Compound	RT#1	RT#2	Resp#1	Resp#2	ng/ml	ng/ml

System Monitoring Compounds						
1) SA Tetrachlo...	4.260	3.372	176.1E6	245.2E6	95.687	97.511
2) SA Decachlor...	9.906	8.263	169.1E6	351.2E6	92.072	97.106
Target Compounds						
41) L9 AR-1268-1	8.482	7.214	141.2E6	324.6E6	955.771	974.188
42) L9 AR-1268-2	8.573	7.277	122.6E6	299.1E6	952.527	976.526
43) L9 AR-1268-3	8.790	7.480	113.5E6	268.3E6	945.642	965.661
44) L9 AR-1268-4	9.194	7.767	44796687	103.7E6	933.347	916.308
45) L9 AR-1268-5	9.588	8.037	312.4E6	748.8E6	969.713	985.225

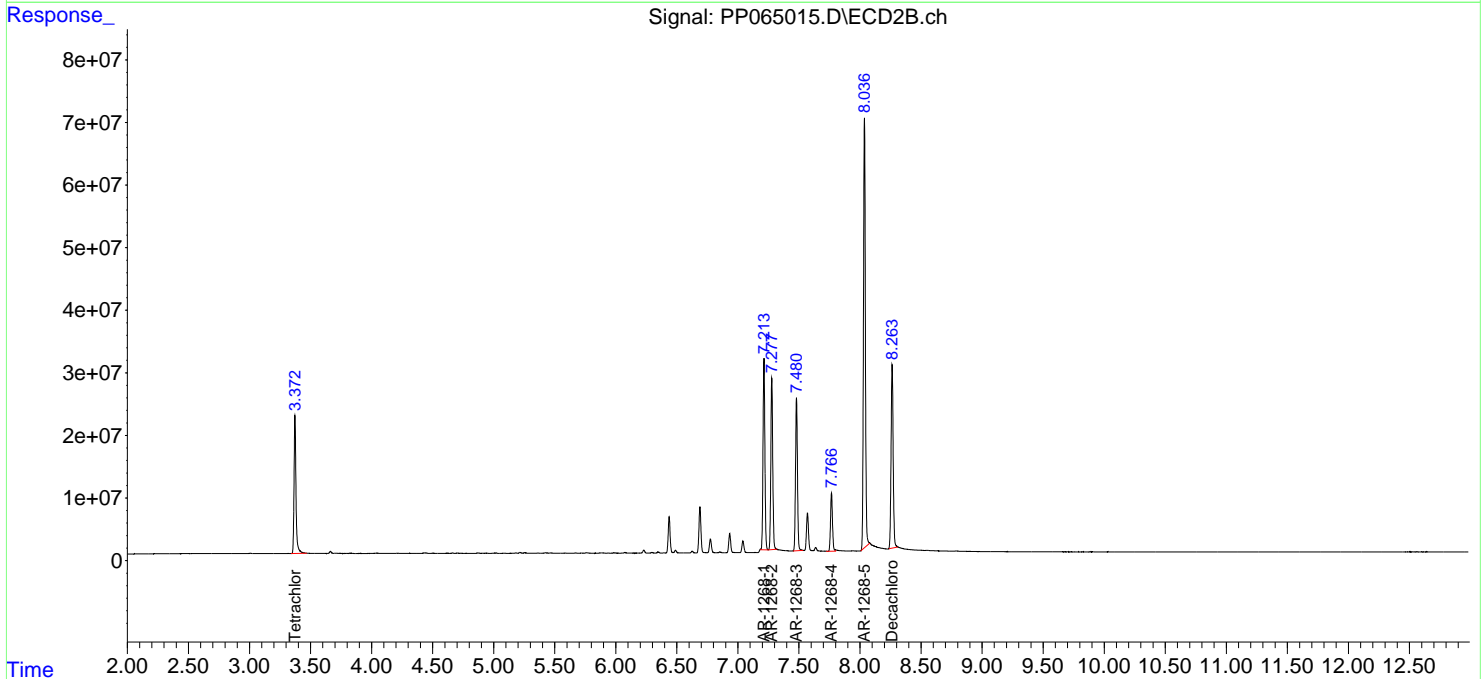
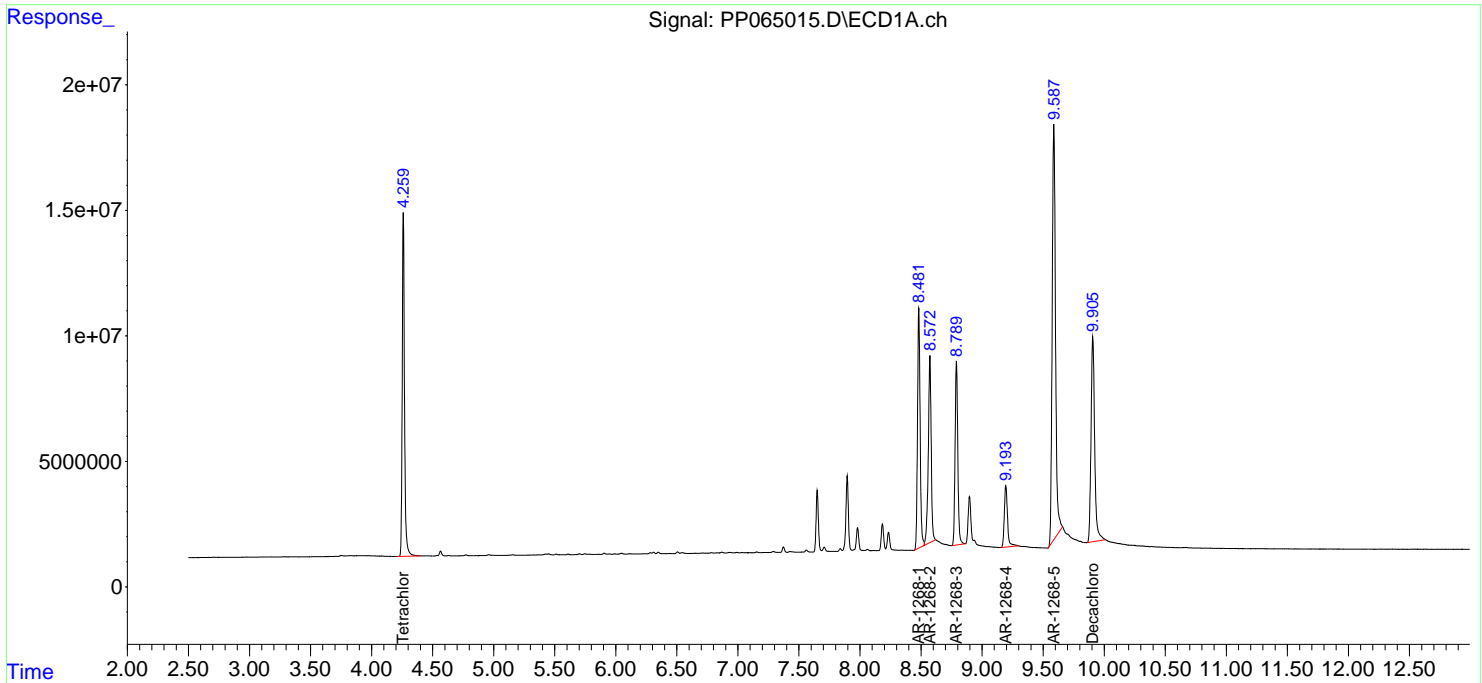
(f)=RT Delta > 1/2 Window (#)=Amounts differ by > 25% (m)=manual int.

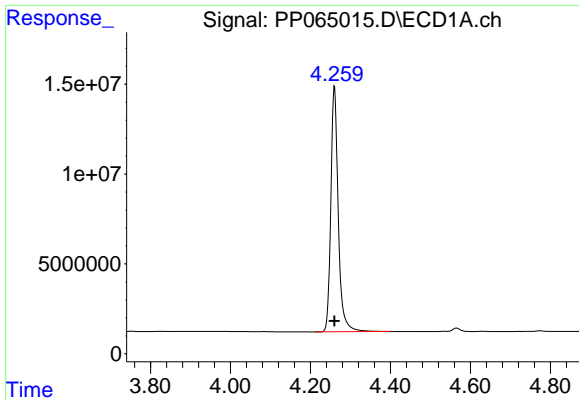
Data Path : Z:\pestpcbsrv\HPCHEM1\ECD_P\Data\PP051624\
 Data File : PP065015.D
 Signal(s) : Signal #1: ECD1A.ch Signal #2: ECD2B.ch
 Acq On : 16 May 2024 20:49
 Operator : YP\AJ
 Sample : AR1268ICC1000
 Misc :
 ALS Vial : 26 Sample Multiplier: 1

Instrument :
 ECD_P
ClientSampleId :
 AR1268ICC1000

Integration File signal 1: autoint1.e
 Integration File signal 2: autoint2.e
 Quant Time: May 17 04:54:18 2024
 Quant Method : Z:\pestpcbsrv\HPCHEM1\ECD_P\methods\PP051624.M
 Quant Title : GC EXTRACTABLES
 QLast Update : Fri May 17 04:50:34 2024
 Response via : Initial Calibration
 Integrator: ChemStation

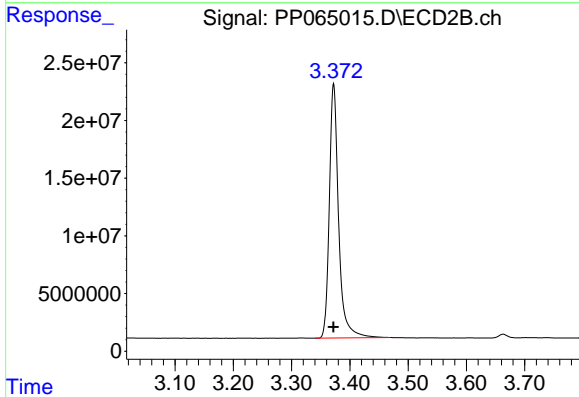
Volume Inj. : 2 µl
 Signal #1 Phase : ZB-MR1 Signal #2 Phase: ZB-MR2
 Signal #1 Info : 30Mx0.32mmx 0.50µ Signal #2 Info : 30M x 0.32mm x 0.25µm



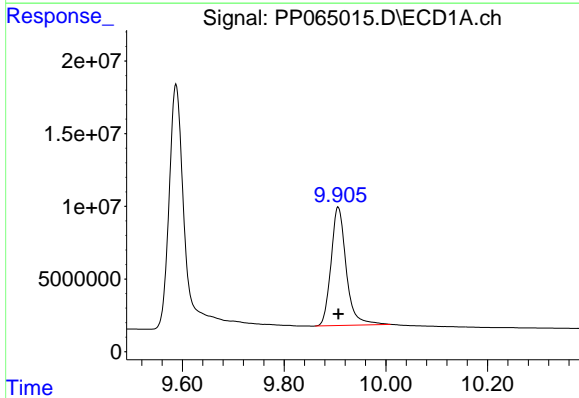


#1 Tetrachloro-m-xylene
 R.T.: 4.260 min
 Delta R.T.: 0.000 min
 Response: 176106561
 Conc: 95.69 ng/ml

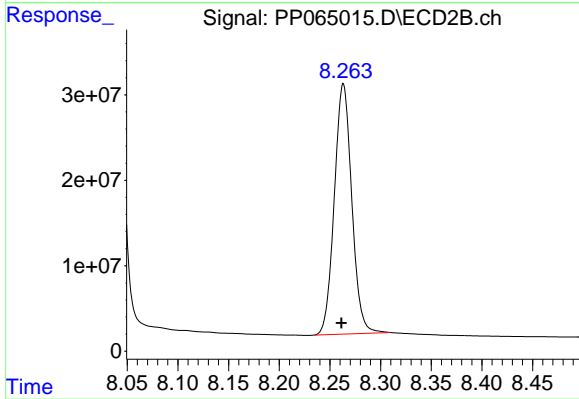
Instrument :
 ECD_P
 ClientSampleId :
 AR1268ICC1000



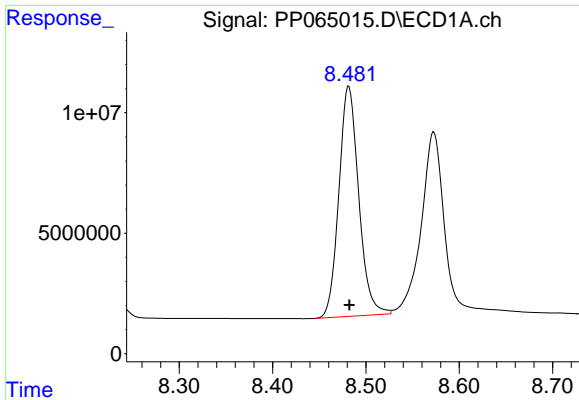
#1 Tetrachloro-m-xylene
 R.T.: 3.372 min
 Delta R.T.: 0.000 min
 Response: 245218356
 Conc: 97.51 ng/ml



#2 Decachlorobiphenyl
 R.T.: 9.906 min
 Delta R.T.: 0.000 min
 Response: 169056564
 Conc: 92.07 ng/ml



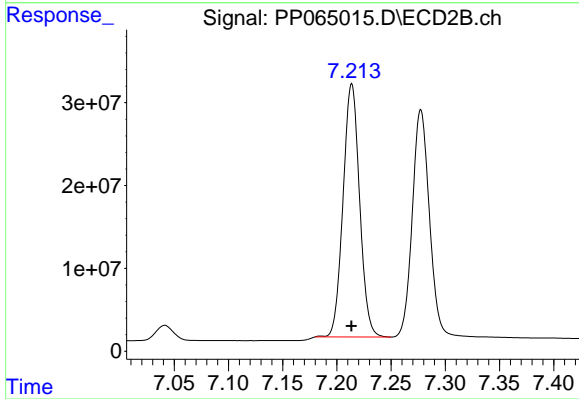
#2 Decachlorobiphenyl
 R.T.: 8.263 min
 Delta R.T.: 0.002 min
 Response: 351216547
 Conc: 97.11 ng/ml



#41 AR-1268-1

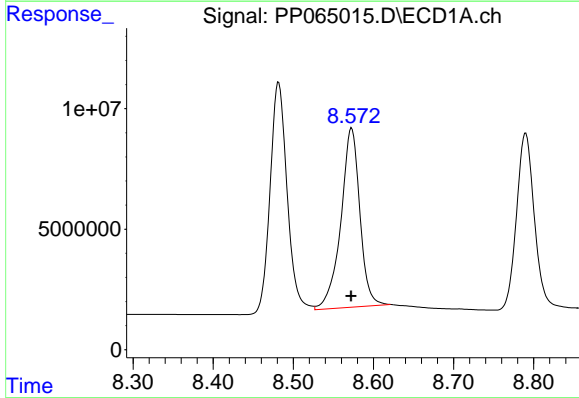
R.T.: 8.482 min
 Delta R.T.: 0.000 min
 Response: 141177595
 Conc: 955.77 ng/ml

Instrument :
 ECD_P
 ClientSampleId :
 AR1268ICC1000



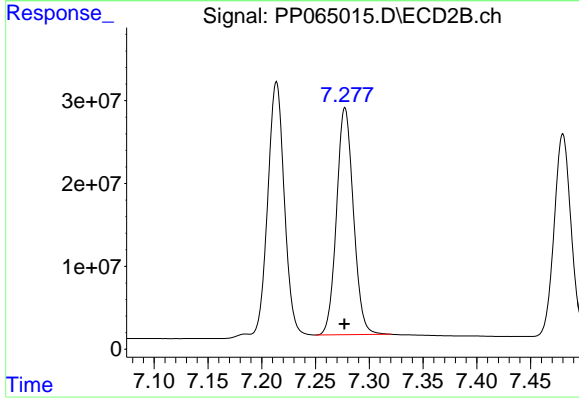
#41 AR-1268-1

R.T.: 7.214 min
 Delta R.T.: 0.000 min
 Response: 324647344
 Conc: 974.19 ng/ml



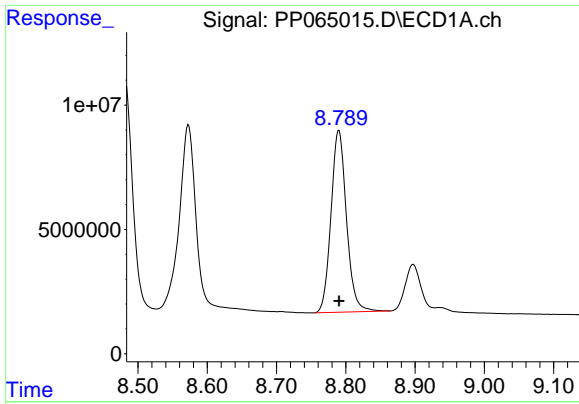
#42 AR-1268-2

R.T.: 8.573 min
 Delta R.T.: 0.000 min
 Response: 122631108
 Conc: 952.53 ng/ml



#42 AR-1268-2

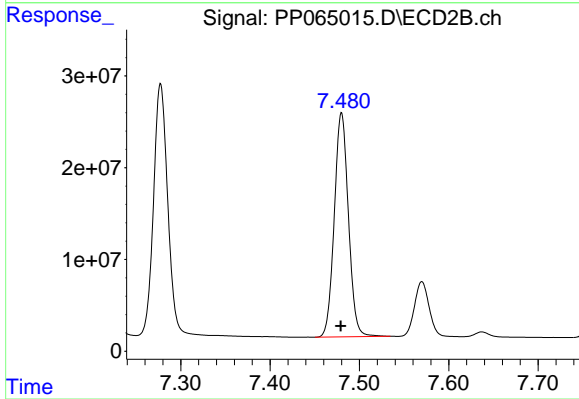
R.T.: 7.277 min
 Delta R.T.: 0.000 min
 Response: 299101451
 Conc: 976.53 ng/ml



#43 AR-1268-3

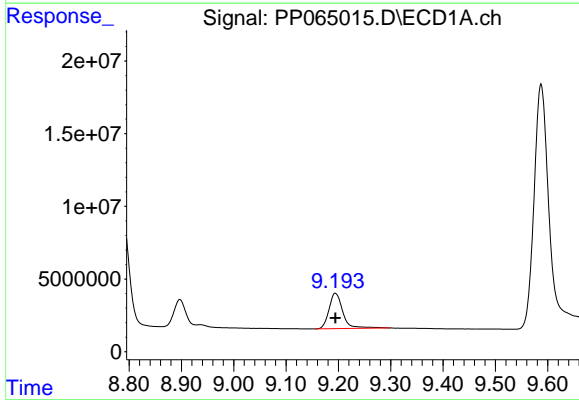
R.T.: 8.790 min
Delta R.T.: 0.000 min
Response: 113456562
Conc: 945.64 ng/ml

Instrument :
ECD_P
ClientSampleId :
AR1268ICC1000



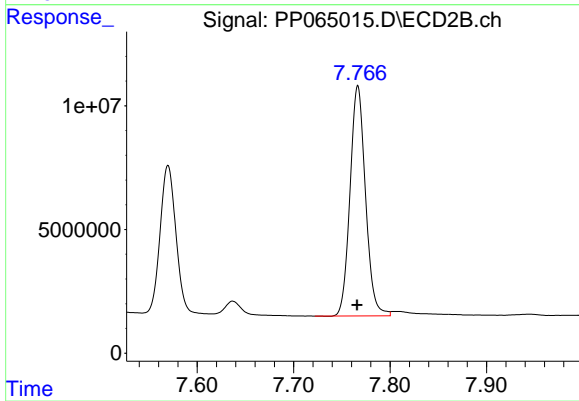
#43 AR-1268-3

R.T.: 7.480 min
Delta R.T.: 0.000 min
Response: 268320081
Conc: 965.66 ng/ml



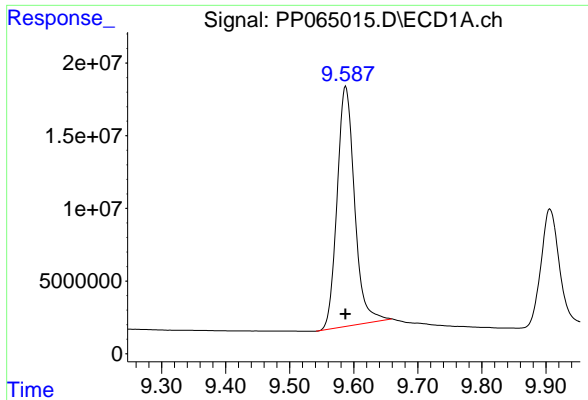
#44 AR-1268-4

R.T.: 9.194 min
Delta R.T.: 0.000 min
Response: 44796687
Conc: 933.35 ng/ml



#44 AR-1268-4

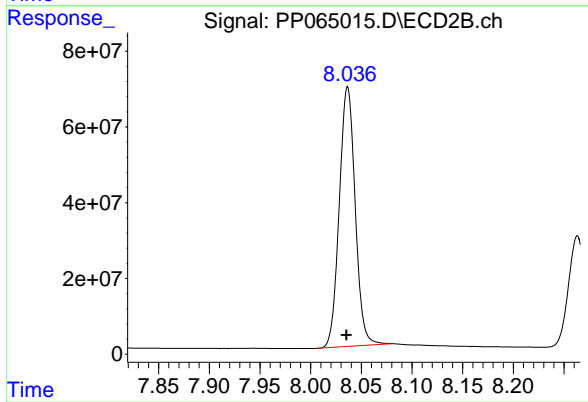
R.T.: 7.767 min
Delta R.T.: 0.000 min
Response: 103712616
Conc: 916.31 ng/ml



#45 AR-1268-5

R.T.: 9.588 min
Delta R.T.: 0.000 min
Response: 312403105
Conc: 969.71 ng/ml

Instrument :
ECD_P
ClientSampleId :
AR1268ICC1000



#45 AR-1268-5

R.T.: 8.037 min
Delta R.T.: 0.001 min
Response: 748766810
Conc: 985.23 ng/ml