

Data Path : Z:\pestpcbsrv\HPCHEM1\ECD_P\Data\PP051624\
 Data File : PP065019.D
 Signal(s) : Signal #1: ECD1A.ch Signal #2: ECD2B.ch
 Acq On : 16 May 2024 21:54
 Operator : YP\AJ
 Sample : AR1268ICC050
 Misc :
 ALS Vial : 30 Sample Multiplier: 1

Instrument :
 ECD_P
ClientSampleId :
 AR1268ICC050

Integration File signal 1: autoint1.e
 Integration File signal 2: autoint2.e
 Quant Time: May 17 04:55:54 2024
 Quant Method : Z:\pestpcbsrv\HPCHEM1\ECD_P\methods\PP051624.M
 Quant Title : GC EXTRACTABLES
 QLast Update : Fri May 17 04:50:34 2024
 Response via : Initial Calibration
 Integrator: ChemStation

Volume Inj. : 2 µl
 Signal #1 Phase : ZB-MR1 Signal #2 Phase: ZB-MR2
 Signal #1 Info : 30Mx0.32mmx 0.50µ Signal #2 Info : 30M x 0.32mm x 0.25µm

Compound	RT#1	RT#2	Resp#1	Resp#2	ng/ml	ng/ml

System Monitoring Compounds						
1) SA Tetrachlo...	4.262	3.373	8384301	11294271	4.556	4.491
2) SA Decachlor...	9.907	8.262	9894735	19533697	5.389	5.401
Target Compounds						
41) L9 AR-1268-1	8.482	7.214	7705300	17433397	52.165	52.313
42) L9 AR-1268-2	8.573	7.278	6618024	15756387	51.405	51.442
43) L9 AR-1268-3	8.791	7.480	6071394	14284336	50.604	51.408
44) L9 AR-1268-4	9.196	7.767	2116563	5680602	44.099	50.189
45) L9 AR-1268-5	9.588	8.036	16716104	36744522	51.888	48.348

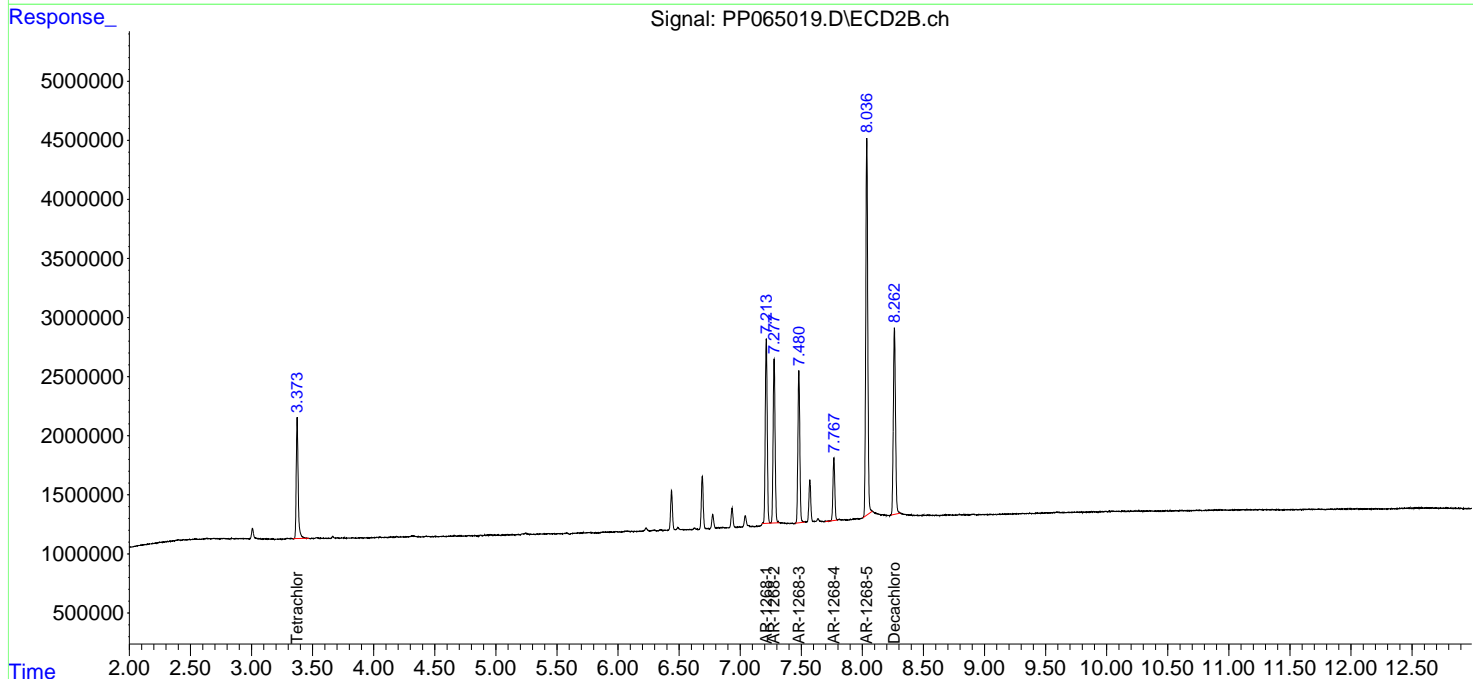
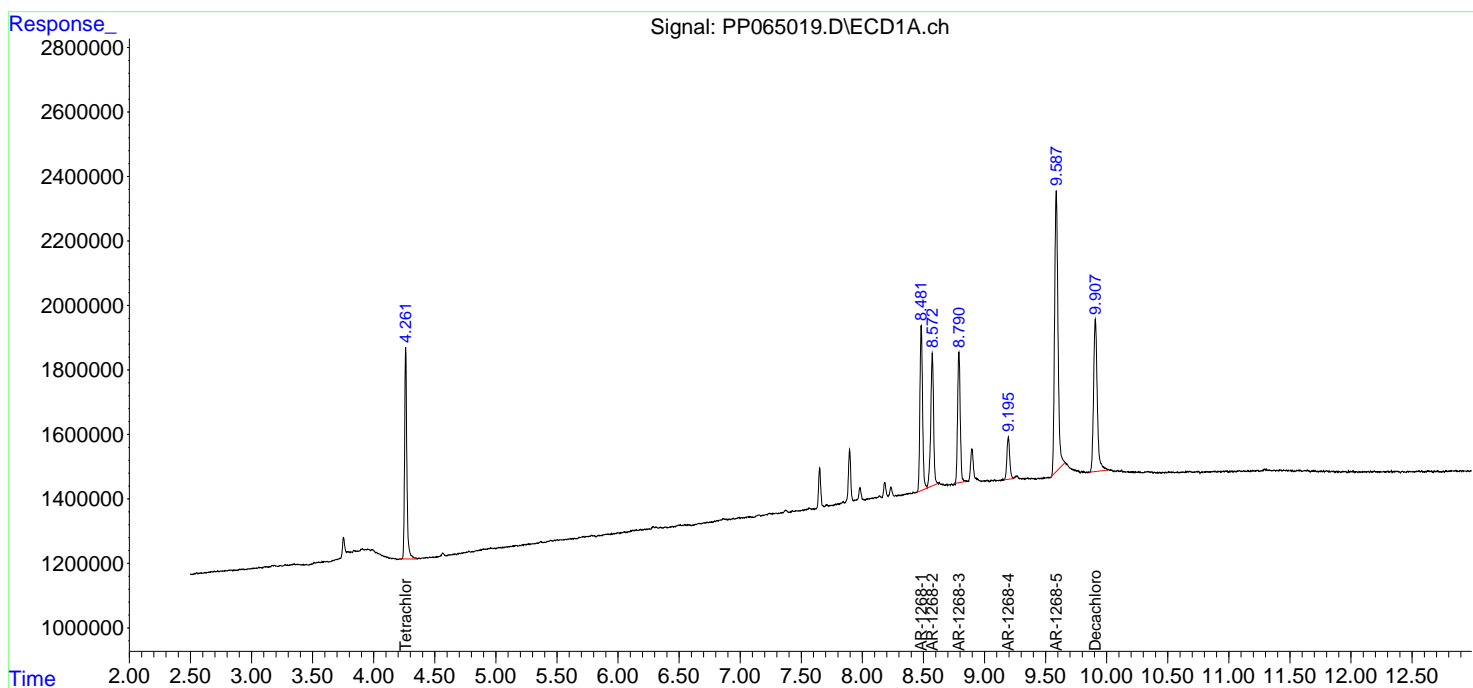
(f)=RT Delta > 1/2 Window (#)=Amounts differ by > 25% (m)=manual int.

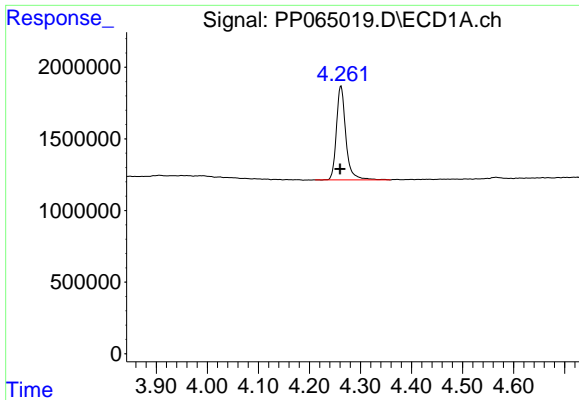
Data Path : Z:\pestpcbsrv\HPCHEM1\ECD_P\Data\PP051624\
 Data File : PP065019.D
 Signal(s) : Signal #1: ECD1A.ch Signal #2: ECD2B.ch
 Acq On : 16 May 2024 21:54
 Operator : YP\AJ
 Sample : AR1268ICC050
 Misc :
 ALS Vial : 30 Sample Multiplier: 1

Instrument :
 ECD_P
 ClientSampleId :
 AR1268ICC050

Integration File signal 1: autoint1.e
 Integration File signal 2: autoint2.e
 Quant Time: May 17 04:55:54 2024
 Quant Method : Z:\pestpcbsrv\HPCHEM1\ECD_P\methods\PP051624.M
 Quant Title : GC EXTRACTABLES
 QLast Update : Fri May 17 04:50:34 2024
 Response via : Initial Calibration
 Integrator: ChemStation

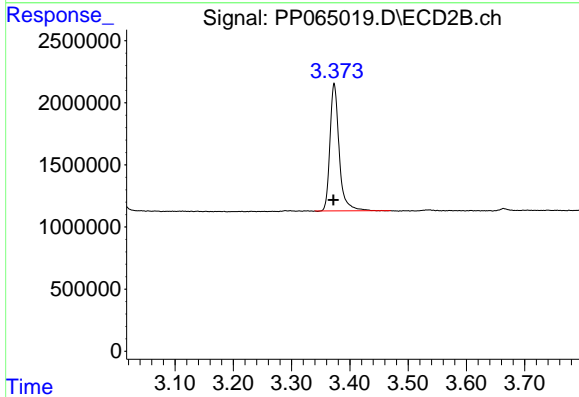
Volume Inj. : 2 µl
 Signal #1 Phase : ZB-MR1 Signal #2 Phase: ZB-MR2
 Signal #1 Info : 30Mx0.32mmx 0.50µ Signal #2 Info : 30M x 0.32mm x 0.25µm



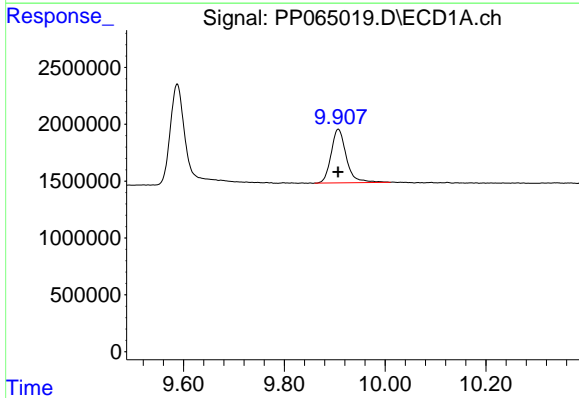


#1 Tetrachloro-m-xylene
 R.T.: 4.262 min
 Delta R.T.: 0.002 min
 Response: 8384301
 Conc: 4.56 ng/ml

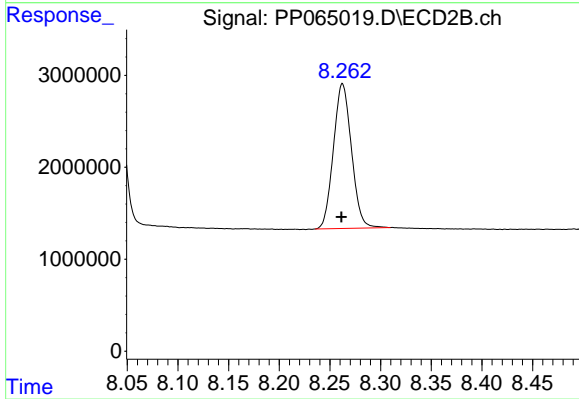
Instrument :
 ECD_P
 ClientSampleId :
 AR1268IC050



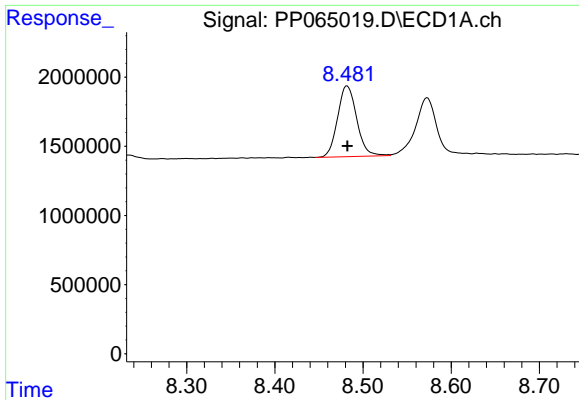
#1 Tetrachloro-m-xylene
 R.T.: 3.373 min
 Delta R.T.: 0.001 min
 Response: 11294271
 Conc: 4.49 ng/ml



#2 Decachlorobiphenyl
 R.T.: 9.907 min
 Delta R.T.: 0.000 min
 Response: 9894735
 Conc: 5.39 ng/ml



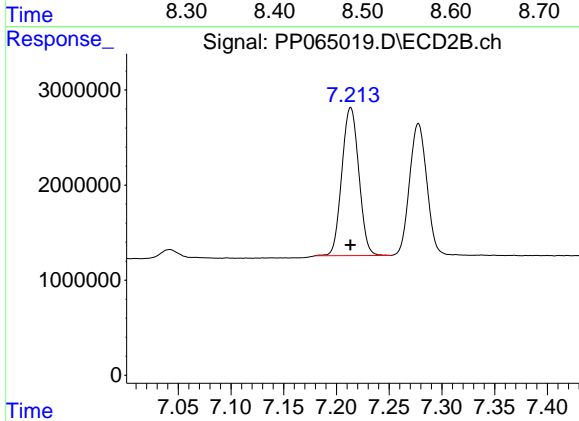
#2 Decachlorobiphenyl
 R.T.: 8.262 min
 Delta R.T.: 0.001 min
 Response: 19533697
 Conc: 5.40 ng/ml



#41 AR-1268-1

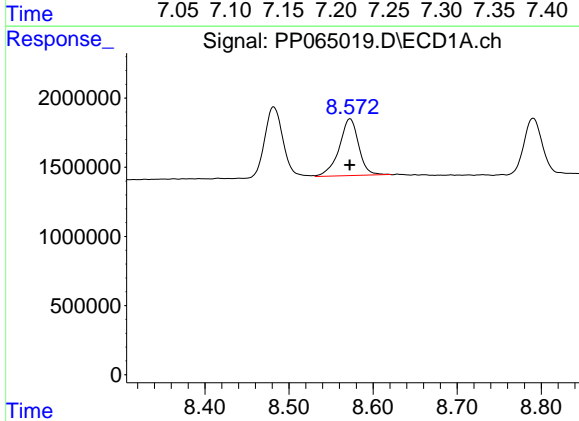
R.T.: 8.482 min
 Delta R.T.: 0.000 min
 Response: 7705300
 Conc: 52.16 ng/ml

Instrument :
 ECD_P
 ClientSampleId :
 AR1268ICC050



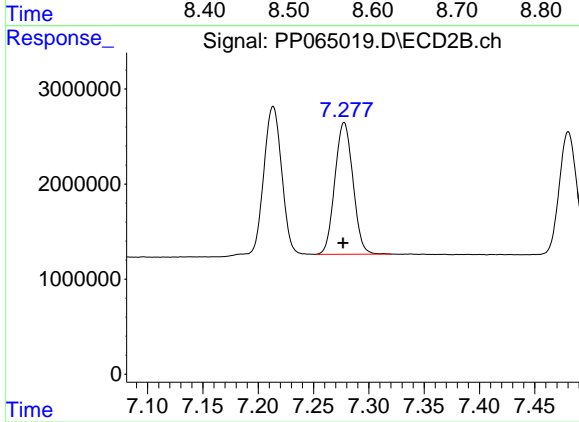
#41 AR-1268-1

R.T.: 7.214 min
 Delta R.T.: 0.000 min
 Response: 17433397
 Conc: 52.31 ng/ml



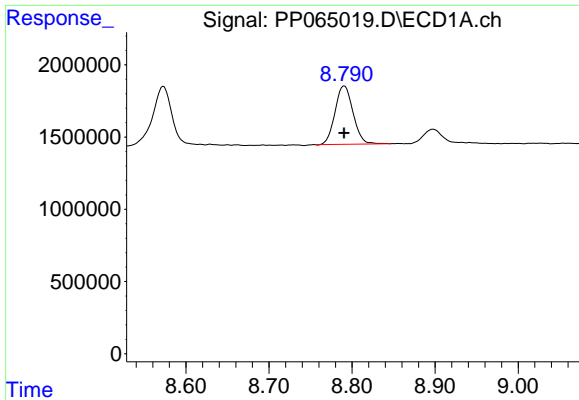
#42 AR-1268-2

R.T.: 8.573 min
 Delta R.T.: 0.000 min
 Response: 6618024
 Conc: 51.40 ng/ml



#42 AR-1268-2

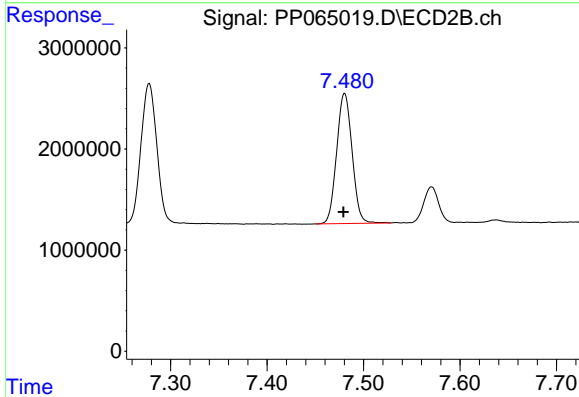
R.T.: 7.278 min
 Delta R.T.: 0.000 min
 Response: 15756387
 Conc: 51.44 ng/ml



#43 AR-1268-3

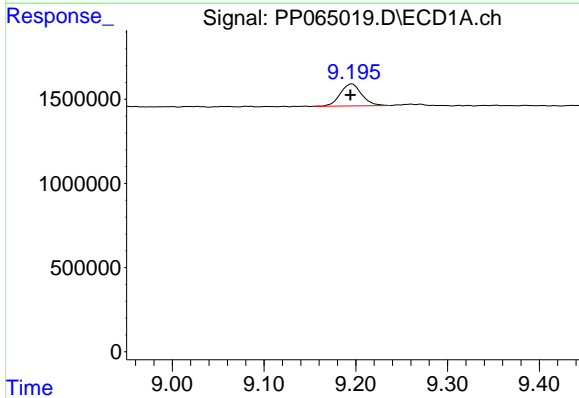
R.T.: 8.791 min
 Delta R.T.: 0.000 min
 Response: 6071394
 Conc: 50.60 ng/ml

Instrument :
 ECD_P
 ClientSampleId :
 AR1268ICC050



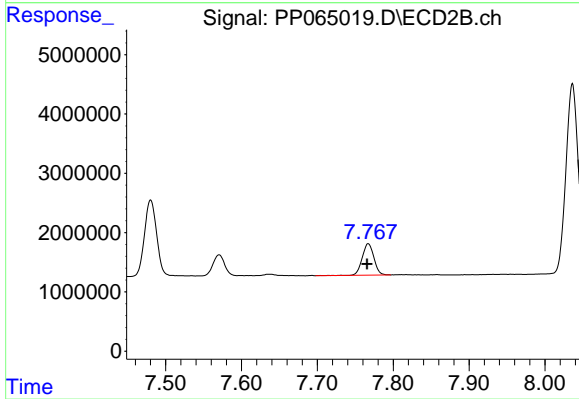
#43 AR-1268-3

R.T.: 7.480 min
 Delta R.T.: 0.001 min
 Response: 14284336
 Conc: 51.41 ng/ml



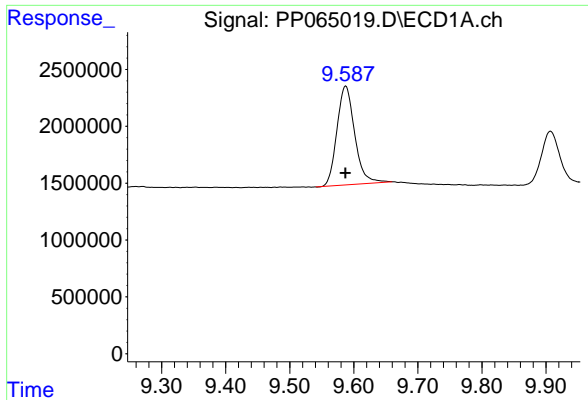
#44 AR-1268-4

R.T.: 9.196 min
 Delta R.T.: 0.001 min
 Response: 2116563
 Conc: 44.10 ng/ml



#44 AR-1268-4

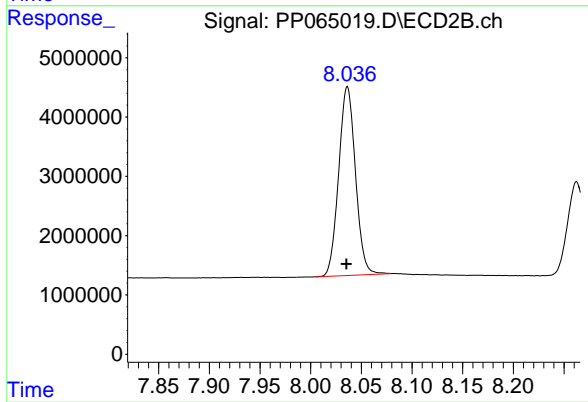
R.T.: 7.767 min
 Delta R.T.: 0.001 min
 Response: 5680602
 Conc: 50.19 ng/ml



#45 AR-1268-5

R.T.: 9.588 min
Delta R.T.: 0.000 min
Response: 16716104
Conc: 51.89 ng/ml

Instrument :
ECD_P
ClientSampleId :
AR1268ICC050



#45 AR-1268-5

R.T.: 8.036 min
Delta R.T.: 0.000 min
Response: 36744522
Conc: 48.35 ng/ml