

Data Path : Z:\pestpcbsrv\HPCHEM1\ECD_P\Data\PP051625\
 Data File : PP072147.D
 Signal(s) : Signal #1: ECD1A.ch Signal #2: ECD2B.ch
 Acq On : 16 May 2025 17:39
 Operator : YP\AJ
 Sample : AR1248CCC500
 Misc :
 ALS Vial : 5 Sample Multiplier: 1

Instrument :
 ECD_P
ClientSampleId :
 AR1248CCC500

Manual Integrations
APPROVED

Reviewed By :Yogesh Patel 05/19/2025
 Supervised By :mohammad ahmed 05/20/2025

Integration File signal 1: autoint1.e
 Integration File signal 2: autoint2.e
 Quant Time: May 17 01:49:46 2025
 Quant Method : Z:\pestpcbsrv\HPCHEM1\ECD_P\methods\PP042225.M
 Quant Title : GC EXTRACTABLES
 QLast Update : Wed Apr 23 05:02:06 2025
 Response via : Initial Calibration
 Integrator: ChemStation

Volume Inj. : 2 µl
 Signal #1 Phase : ZB-MR1 Signal #2 Phase: ZB-MR2
 Signal #1 Info : 30Mx0.32mmx 0.50µ Signal #2 Info : 30M x 0.32mm x 0.25µm

Compound	RT#1	RT#2	Resp#1	Resp#2	ng/ml	ng/ml

System Monitoring Compounds						
1) SA Tetrachlo...	4.509	3.802	96866277	78922595	48.857	56.027
2) SA Decachlor...	10.219	8.827	75100960	51087424	51.865	58.249
Target Compounds						
21) L5 AR-1248-1	5.662	4.885	21638079	19498583	503.927	540.028m
22) L5 AR-1248-2	5.933	5.122	28730604	25726852	475.416	525.441
23) L5 AR-1248-3	6.135	5.165	32198918	26932052	482.132	527.196
24) L5 AR-1248-4	6.535	5.336	40507899	31587298	478.755	520.750
25) L5 AR-1248-5	6.574	5.729	38068694	31088109	479.163	533.327

(f)=RT Delta > 1/2 Window (#)=Amounts differ by > 25% (m)=manual int.

Data Path : Z:\pestpcbsrv\HPCHEM1\ECD_P\Data\PP051625\
 Data File : PP072147.D
 Signal(s) : Signal #1: ECD1A.ch Signal #2: ECD2B.ch
 Acq On : 16 May 2025 17:39
 Operator : YP\AJ
 Sample : AR1248CCC500
 Misc :
 ALS Vial : 5 Sample Multiplier: 1

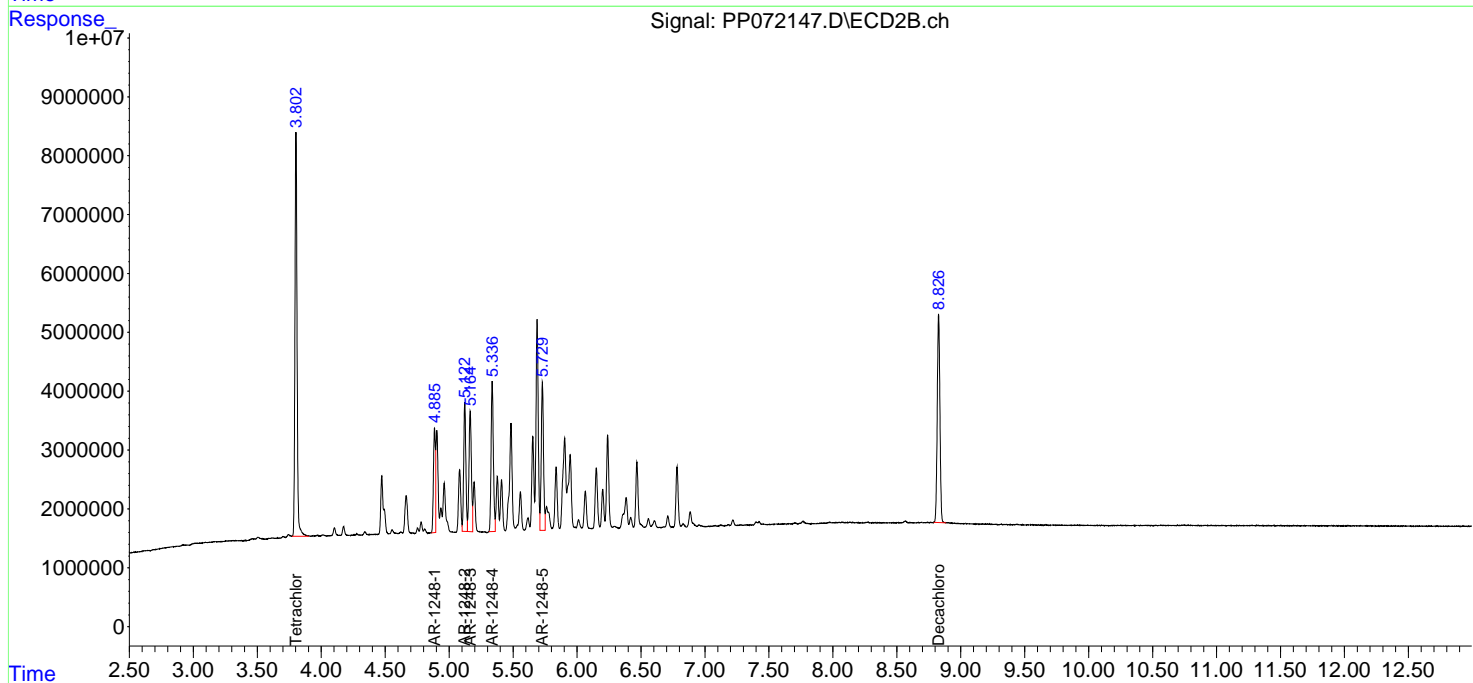
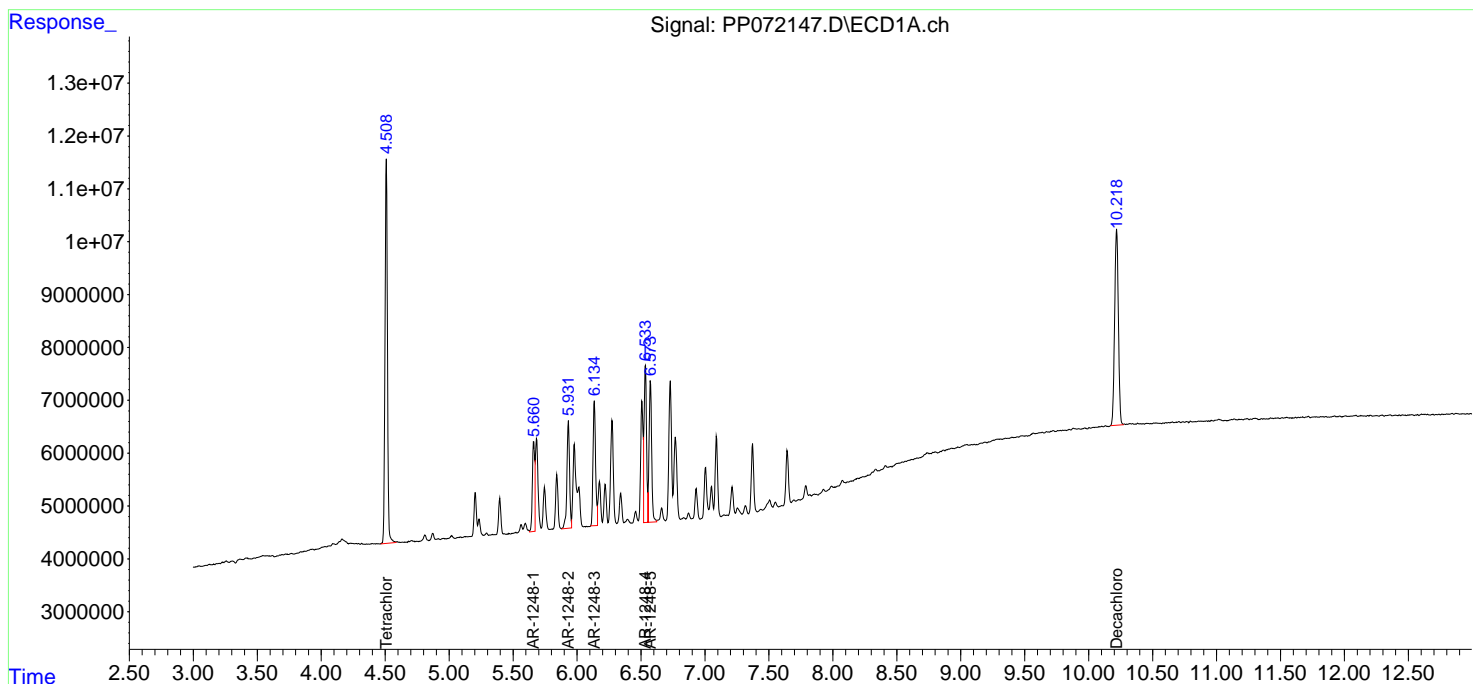
Instrument :
 ECD_P
 ClientSampleId :
 AR1248CCC500

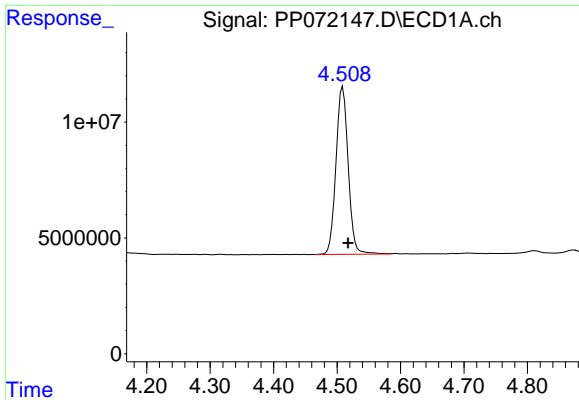
Manual Integrations
 APPROVED

Reviewed By :Yogesh Patel 05/19/2025
 Supervised By :mohammad ahmed 05/20/2025

Integration File signal 1: autoint1.e
 Integration File signal 2: autoint2.e
 Quant Time: May 17 01:49:46 2025
 Quant Method : Z:\pestpcbsrv\HPCHEM1\ECD_P\methods\PP042225.M
 Quant Title : GC EXTRACTABLES
 QLast Update : Wed Apr 23 05:02:06 2025
 Response via : Initial Calibration
 Integrator: ChemStation

Volume Inj. : 2 µl
 Signal #1 Phase : ZB-MR1 Signal #2 Phase: ZB-MR2
 Signal #1 Info : 30Mx0.32mmx 0.50µ Signal #2 Info : 30M x 0.32mm x 0.25µm

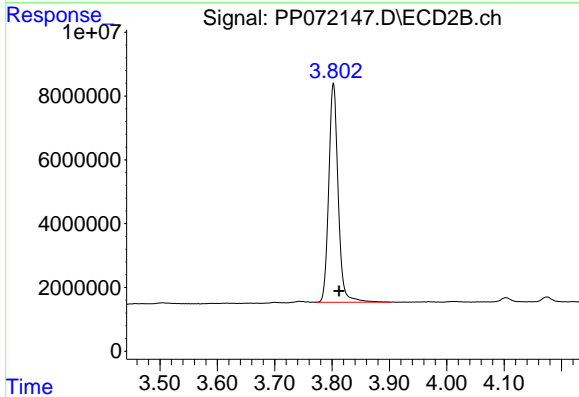




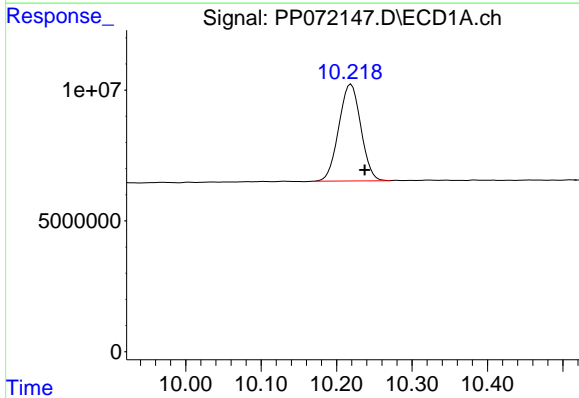
#1 Tetrachloro-m-xylene
 R.T.: 4.509 min
 Delta R.T.: -0.008 min
 Response: 96866277
 Conc: 48.86 ng/ml

Instrument : ECD_P
 Client Sample Id : AR1248CCC500

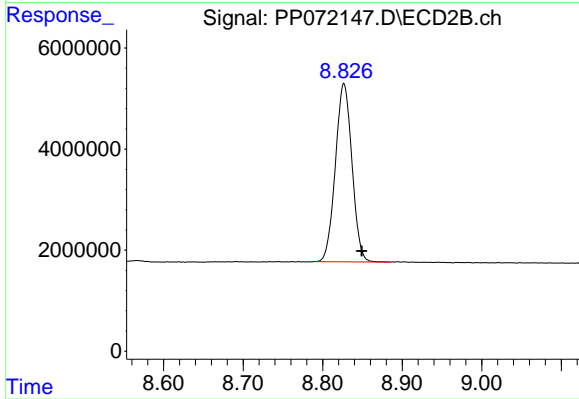
Manual Integrations
APPROVED
 Reviewed By :Yogesh Patel 05/19/2025
 Supervised By :mohammad ahmed 05/20/2025



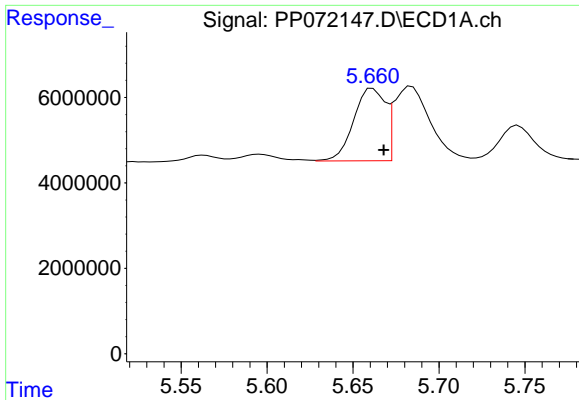
#1 Tetrachloro-m-xylene
 R.T.: 3.802 min
 Delta R.T.: -0.010 min
 Response: 78922595
 Conc: 56.03 ng/ml



#2 Decachlorobiphenyl
 R.T.: 10.219 min
 Delta R.T.: -0.018 min
 Response: 75100960
 Conc: 51.86 ng/ml



#2 Decachlorobiphenyl
 R.T.: 8.827 min
 Delta R.T.: -0.022 min
 Response: 51087424
 Conc: 58.25 ng/ml



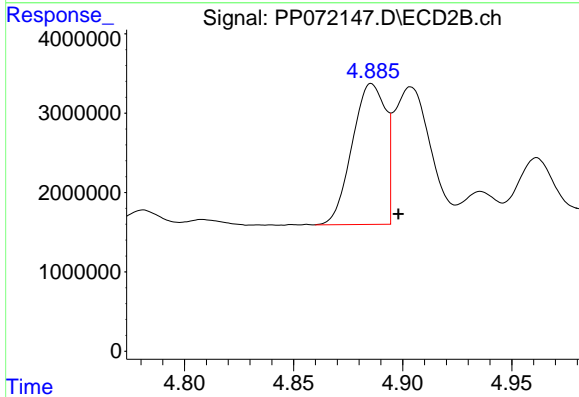
#21 AR-1248-1

R.T.: 5.662 min
 Delta R.T.: -0.006 min
 Response: 21638079
 Conc: 503.93 ng/ml

Instrument :
 ECD_P
 ClientSampleId :
 AR1248CCC500

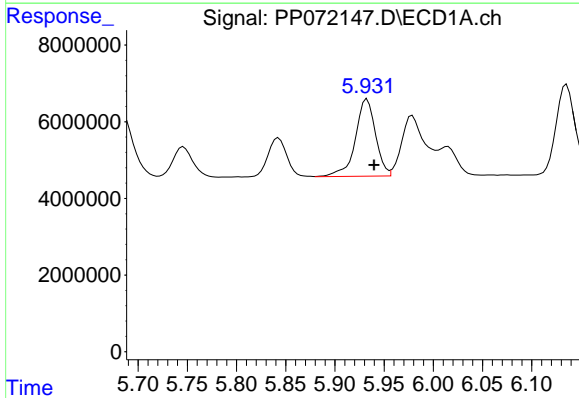
Manual Integrations
 APPROVED

Reviewed By :Yogesh Patel 05/19/2025
 Supervised By :mohammad ahmed 05/20/2025



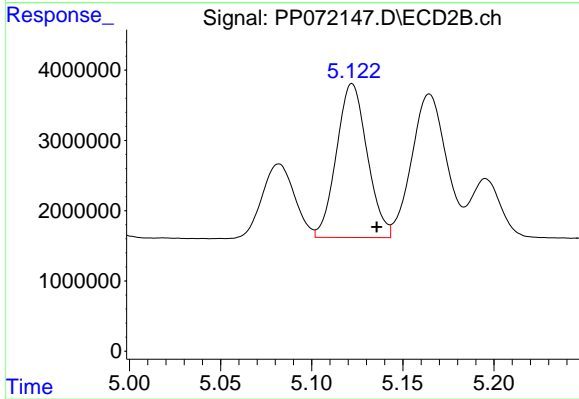
#21 AR-1248-1

R.T.: 4.885 min
 Delta R.T.: -0.013 min
 Response: 19498583
 Conc: 540.03 ng/ml m



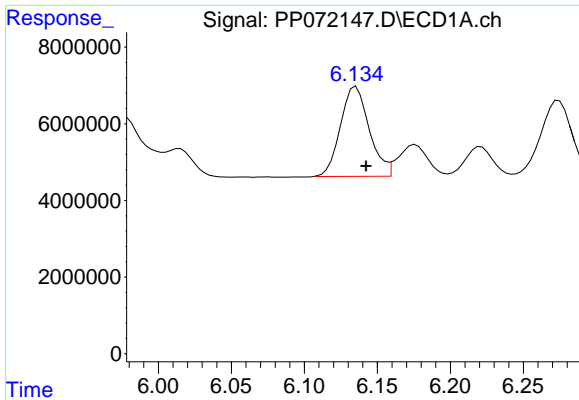
#22 AR-1248-2

R.T.: 5.933 min
 Delta R.T.: -0.007 min
 Response: 28730604
 Conc: 475.42 ng/ml



#22 AR-1248-2

R.T.: 5.122 min
 Delta R.T.: -0.013 min
 Response: 25726852
 Conc: 525.44 ng/ml



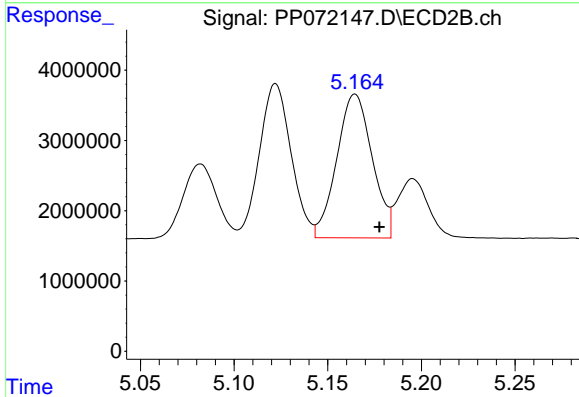
#23 AR-1248-3

R.T.: 6.135 min
 Delta R.T.: -0.007 min
 Response: 32198918
 Conc: 482.13 ng/ml

Instrument :
 ECD_P
 ClientSampleId :
 AR1248CCC500

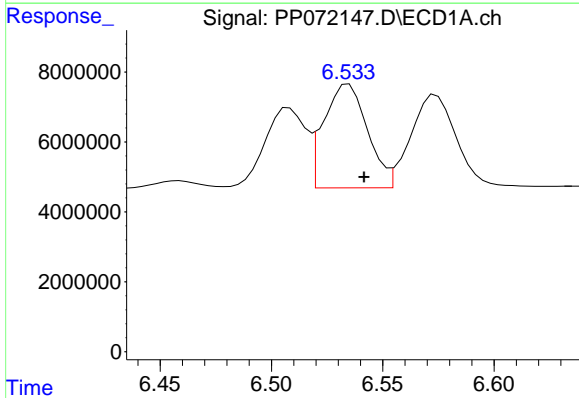
Manual Integrations
 APPROVED

Reviewed By :Yogesh Patel 05/19/2025
 Supervised By :mohammad ahmed 05/20/2025



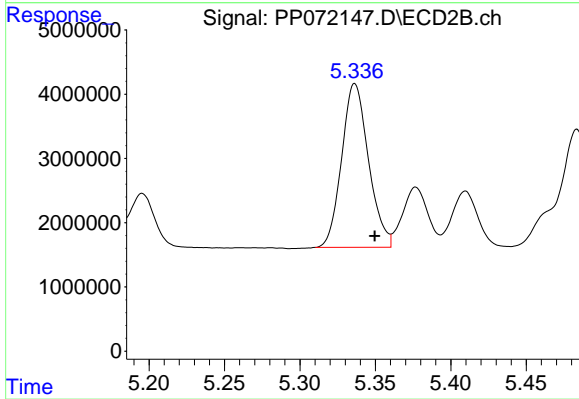
#23 AR-1248-3

R.T.: 5.165 min
 Delta R.T.: -0.013 min
 Response: 26932052
 Conc: 527.20 ng/ml



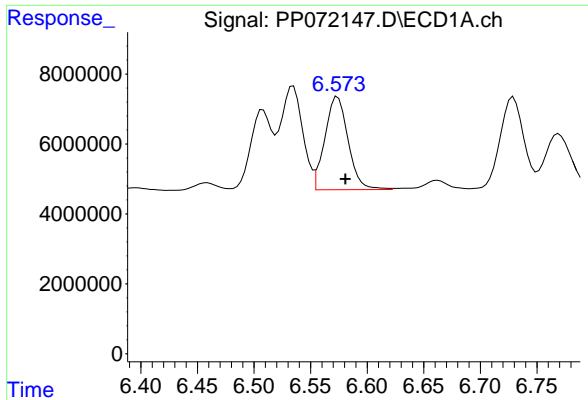
#24 AR-1248-4

R.T.: 6.535 min
 Delta R.T.: -0.007 min
 Response: 40507899
 Conc: 478.76 ng/ml



#24 AR-1248-4

R.T.: 5.336 min
 Delta R.T.: -0.013 min
 Response: 31587298
 Conc: 520.75 ng/ml



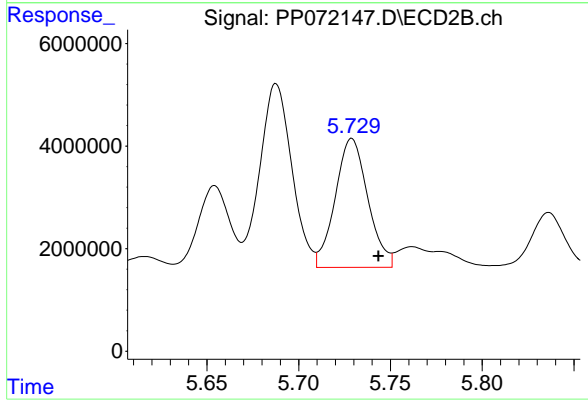
#25 AR-1248-5

R.T.: 6.574 min
 Delta R.T.: -0.007 min
 Response: 38068694
 Conc: 479.16 ng/ml

Instrument :
 ECD_P
 ClientSampleId :
 AR1248CCC500

Manual Integrations
 APPROVED

Reviewed By :Yogesh Patel 05/19/2025
 Supervised By :mohammad ahmed 05/20/2025



#25 AR-1248-5

R.T.: 5.729 min
 Delta R.T.: -0.014 min
 Response: 31088109
 Conc: 533.33 ng/ml