

Data Path : Z:\pestpcbsrv\HPCHEM1\ECD_P\Data\PP051722\
 Data File : PP047661.D
 Signal(s) : Signal #1: ECD1A.ch Signal #2: ECD2B.ch
 Acq On : 17 May 2022 12:33
 Operator : YP\AJ
 Sample : PB144828BS
 Misc :
 ALS Vial : 8 Sample Multiplier: 1

Instrument :
 ECD_P
ClientSampleId :
 PB144828BS

Manual Integrations
APPROVED
 Reviewed By :Yogesh Patel 05/18/2022
 Supervised By :mohammad ahmed 05/18/2022

Integration File signal 1: autoint1.e
 Integration File signal 2: autoint2.e
 Quant Time: May 18 06:19:33 2022
 Quant Method : Z:\pestpcbsrv\HPCHEM1\ECD_P\methods\PP051022.M
 Quant Title : GC EXTRACTABLES
 QLast Update : Wed May 11 13:10:20 2022
 Response via : Initial Calibration
 Integrator: ChemStation

Volume Inj. : 2 µl
 Signal #1 Phase : ZB-MR1 Signal #2 Phase: ZB-MR2
 Signal #1 Info : 30Mx0.32mmx 0.50µ Signal #2 Info : 30M x 0.32mm x 0.25µm

Compound	RT#1	RT#2	Resp#1	Resp#2	ng/ml	ng/ml

System Monitoring Compounds						
1) SA Tetrachlo...	3.845	3.113	49769646	65352779	19.576	19.849
2) SA Decachlor...	9.907	8.411	36219508	60087522	25.318	22.075
Target Compounds						
3) L1 AR-1016-1	5.088	4.239	34931094	51850381	474.142	444.371
4) L1 AR-1016-2	5.111	4.257	52602887	77973771	471.180	449.836
5) L1 AR-1016-3	5.176	4.439	31726108	39795078	462.560	439.848
6) L1 AR-1016-4	5.281	4.488	27569737	31119497	471.908	426.173
7) L1 AR-1016-5	5.600	4.711	28584360	39866507	523.728	424.279
31) L7 AR-1260-1	6.822	5.807	48803736	93692230	539.497m	549.984
32) L7 AR-1260-2	7.105	6.014	64812802	160.1E6	558.255	659.908
33) L7 AR-1260-3	7.499	6.174	48868467	110.1E6	474.156	550.723
34) L7 AR-1260-4	7.746	6.683	49254727	79908800	509.716	452.247
35) L7 AR-1260-5	8.086	6.951	95777856	216.8E6	535.421	460.819

(f)=RT Delta > 1/2 Window (#)=Amounts differ by > 25% (m)=manual int.

Data Path : Z:\pestpcbsrv\HPCHEM1\ECD_P\Data\PP051722\
 Data File : PP047661.D
 Signal(s) : Signal #1: ECD1A.ch Signal #2: ECD2B.ch
 Acq On : 17 May 2022 12:33
 Operator : YP\AJ
 Sample : PB144828BS
 Misc :
 ALS Vial : 8 Sample Multiplier: 1

Instrument :

ECD_P

ClientSampleId :

PB144828BS

Manual Integrations

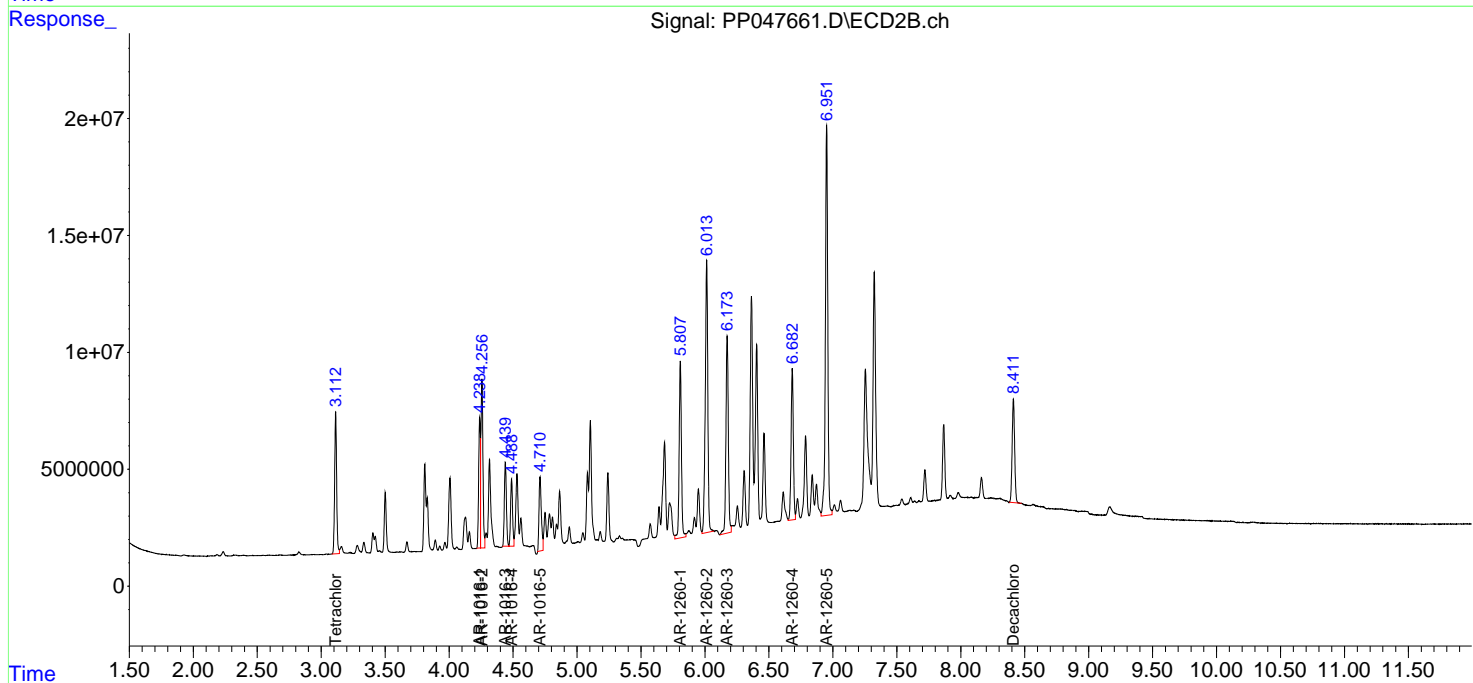
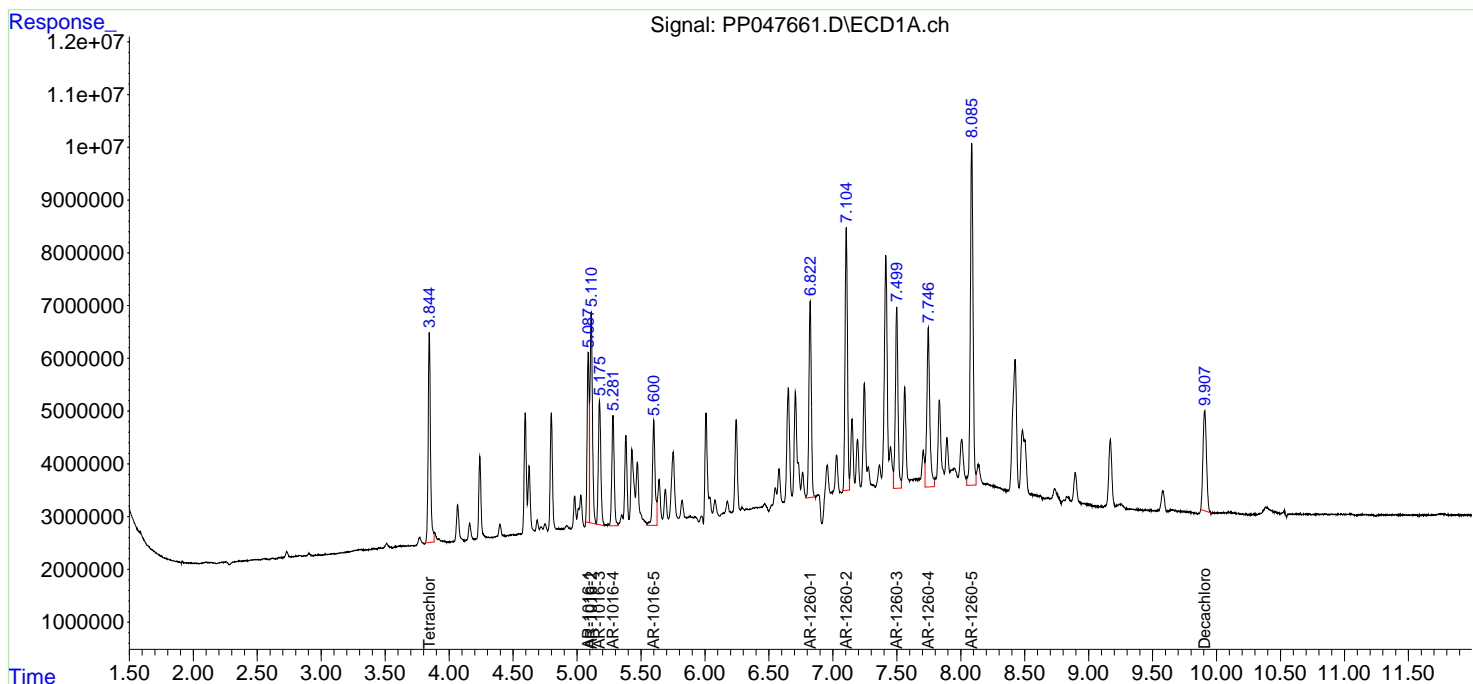
APPROVED

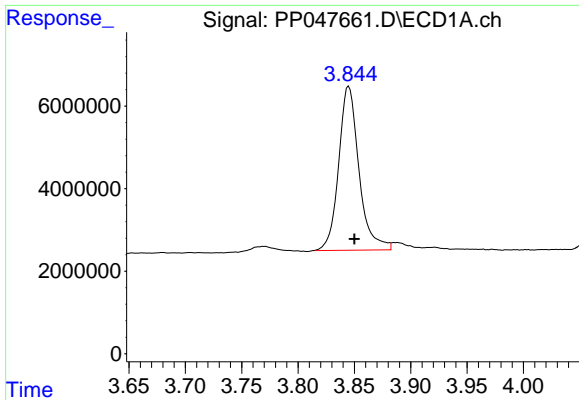
Reviewed By :Yogesh Patel 05/18/2022

Supervised By :mohammad ahmed 05/18/2022

Integration File signal 1: autoint1.e
 Integration File signal 2: autoint2.e
 Quant Time: May 18 06:19:33 2022
 Quant Method : Z:\pestpcbsrv\HPCHEM1\ECD_P\methods\PP051022.M
 Quant Title : GC EXTRACTABLES
 QLast Update : Wed May 11 13:10:20 2022
 Response via : Initial Calibration
 Integrator: ChemStation

Volume Inj. : 2 µl
 Signal #1 Phase : ZB-MR1 Signal #2 Phase: ZB-MR2
 Signal #1 Info : 30Mx0.32mmx 0.50µ Signal #2 Info : 30M x 0.32mm x 0.25µm



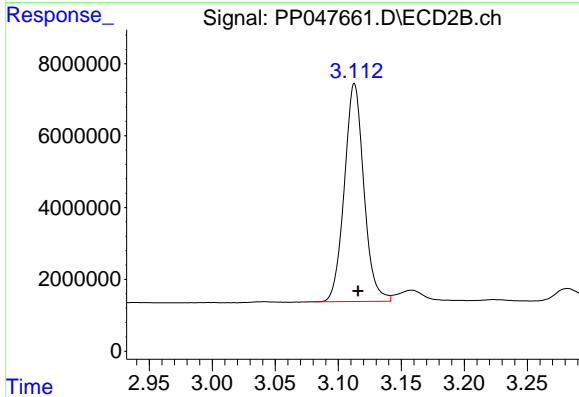


#1 Tetrachloro-m-xylene
 R.T.: 3.845 min
 Delta R.T.: -0.005 min
 Response: 49769646
 Conc: 19.58 ng/ml

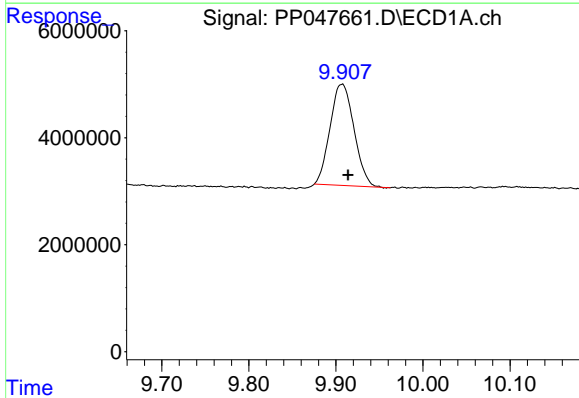
Instrument :
 ECD_P
 ClientSampleId :
 PB144828BS

Manual Integrations
 APPROVED

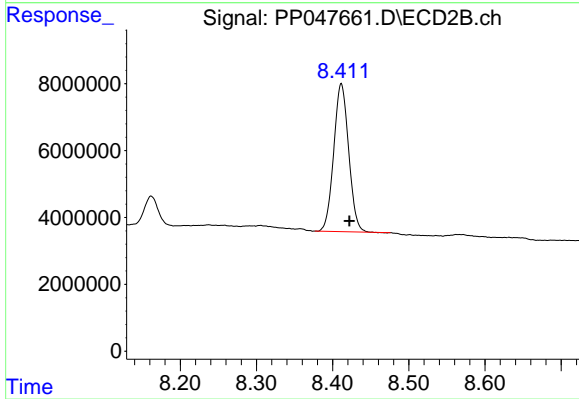
Reviewed By :Yogesh Patel 05/18/2022
 Supervised By :mohammad ahmed 05/18/2022



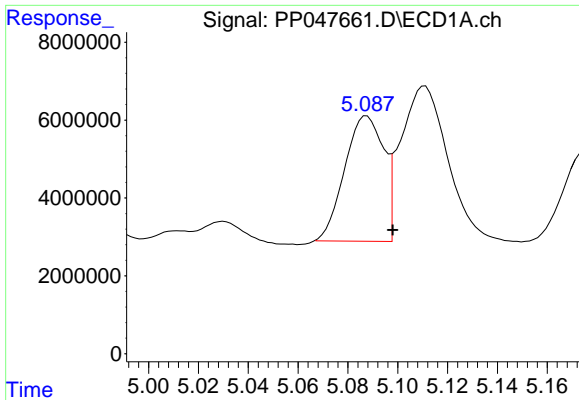
#1 Tetrachloro-m-xylene
 R.T.: 3.113 min
 Delta R.T.: -0.003 min
 Response: 65352779
 Conc: 19.85 ng/ml



#2 Decachlorobiphenyl
 R.T.: 9.907 min
 Delta R.T.: -0.007 min
 Response: 36219508
 Conc: 25.32 ng/ml



#2 Decachlorobiphenyl
 R.T.: 8.411 min
 Delta R.T.: -0.011 min
 Response: 60087522
 Conc: 22.08 ng/ml



#3 AR-1016-1

R.T.: 5.088 min
 Delta R.T.: -0.010 min
 Response: 34931094
 Conc: 474.14 ng/ml

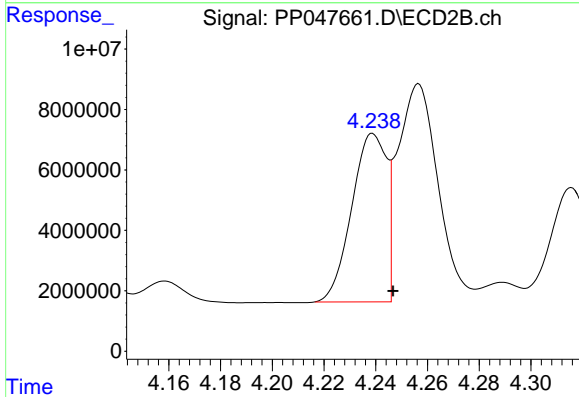
Instrument :

ECD_P

ClientSampleId :
 PB144828BS

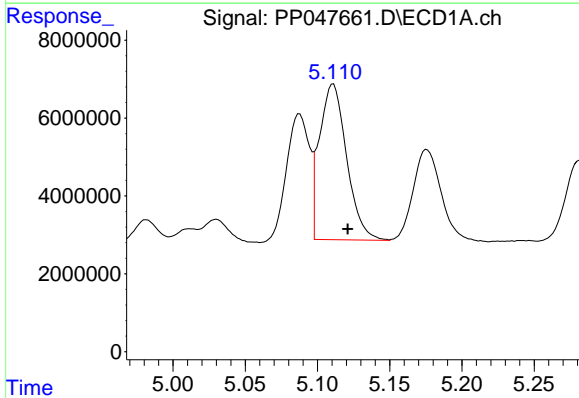
Manual Integrations
 APPROVED

Reviewed By :Yogesh Patel 05/18/2022
 Supervised By :mohammad ahmed 05/18/2022



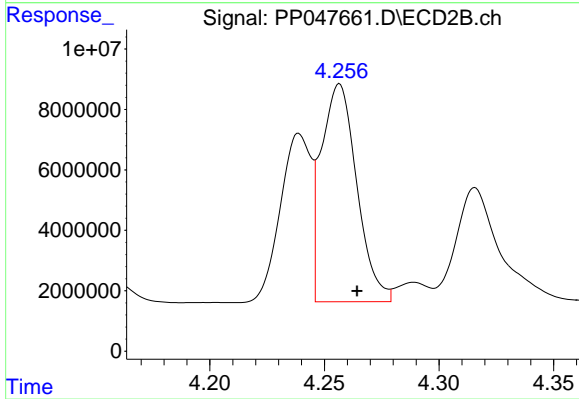
#3 AR-1016-1

R.T.: 4.239 min
 Delta R.T.: -0.008 min
 Response: 51850381
 Conc: 444.37 ng/ml



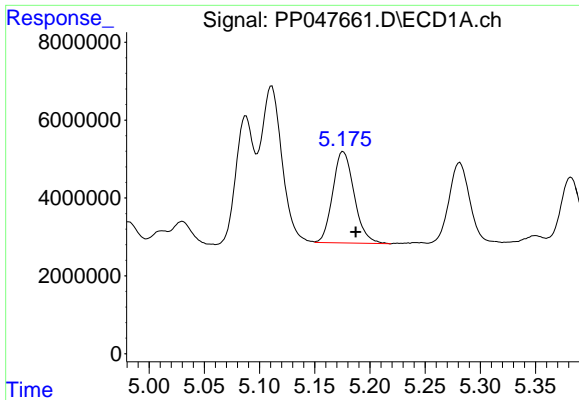
#4 AR-1016-2

R.T.: 5.111 min
 Delta R.T.: -0.010 min
 Response: 52602887
 Conc: 471.18 ng/ml



#4 AR-1016-2

R.T.: 4.257 min
 Delta R.T.: -0.008 min
 Response: 77973771
 Conc: 449.84 ng/ml



#5 AR-1016-3

R.T.: 5.176 min
 Delta R.T.: -0.011 min
 Response: 31726108
 Conc: 462.56 ng/ml

Instrument :

ECD_P

ClientSampleId :

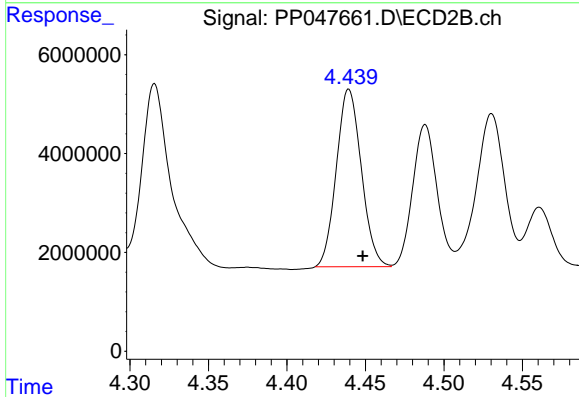
PB144828BS

Manual Integrations

APPROVED

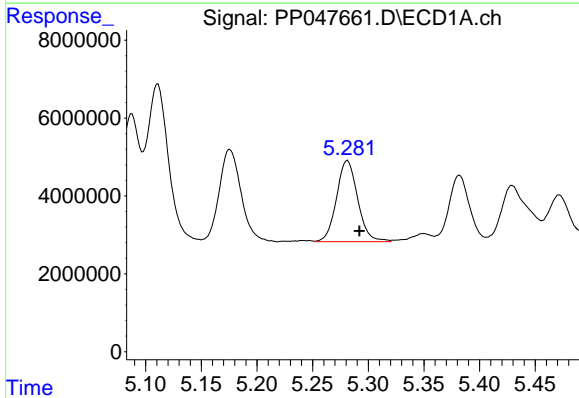
Reviewed By :Yogesh Patel 05/18/2022

Supervised By :mohammad ahmed 05/18/2022



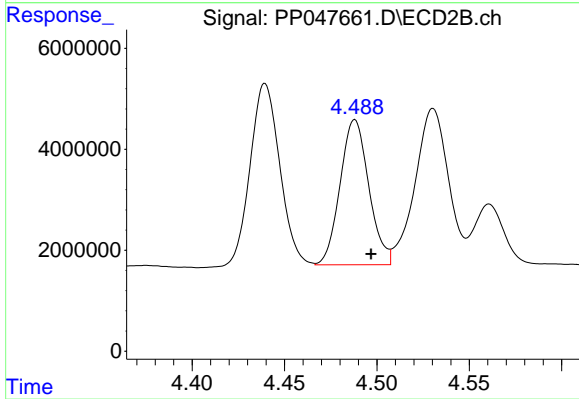
#5 AR-1016-3

R.T.: 4.439 min
 Delta R.T.: -0.009 min
 Response: 39795078
 Conc: 439.85 ng/ml



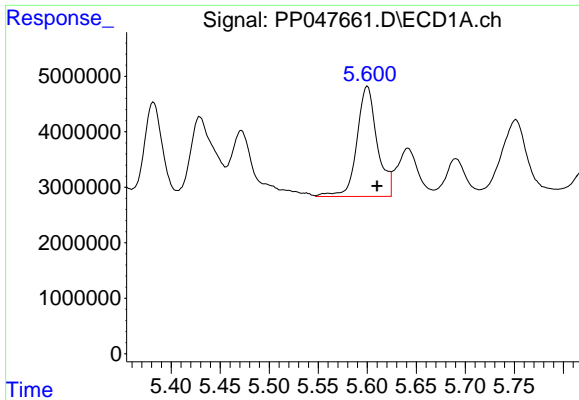
#6 AR-1016-4

R.T.: 5.281 min
 Delta R.T.: -0.011 min
 Response: 27569737
 Conc: 471.91 ng/ml



#6 AR-1016-4

R.T.: 4.488 min
 Delta R.T.: -0.009 min
 Response: 31119497
 Conc: 426.17 ng/ml



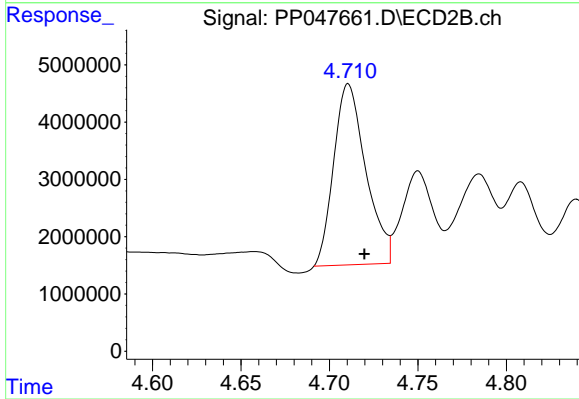
#7 AR-1016-5

R.T.: 5.600 min
 Delta R.T.: -0.010 min
 Response: 28584360
 Conc: 523.73 ng/ml

Instrument :
 ECD_P
 ClientSampleId :
 PB144828BS

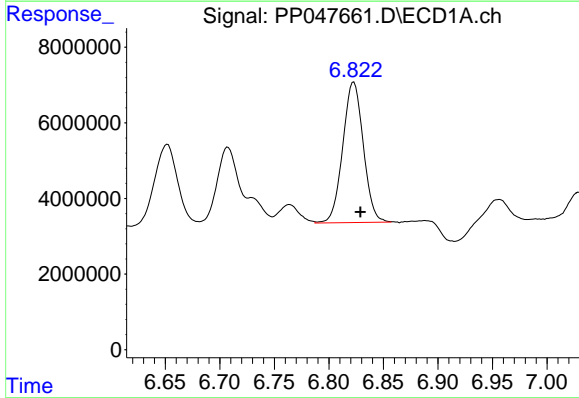
Manual Integrations
 APPROVED

Reviewed By :Yogesh Patel 05/18/2022
 Supervised By :mohammad ahmed 05/18/2022



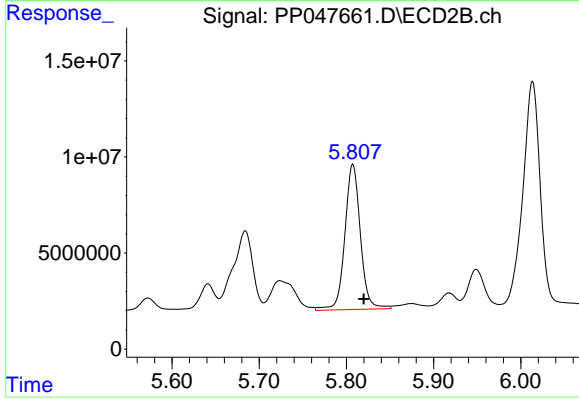
#7 AR-1016-5

R.T.: 4.711 min
 Delta R.T.: -0.009 min
 Response: 39866507
 Conc: 424.28 ng/ml



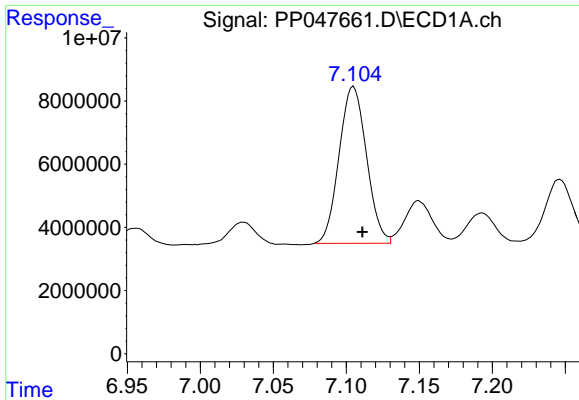
#31 AR-1260-1

R.T.: 6.822 min
 Delta R.T.: -0.007 min
 Response: 48803736
 Conc: 539.50 ng/ml m



#31 AR-1260-1

R.T.: 5.807 min
 Delta R.T.: -0.012 min
 Response: 93692230
 Conc: 549.98 ng/ml



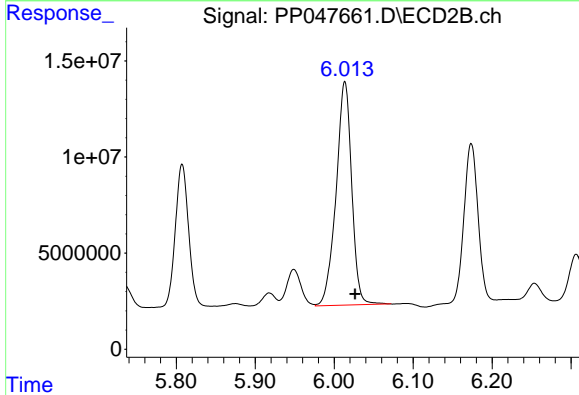
#32 AR-1260-2

R.T.: 7.105 min
 Delta R.T.: -0.006 min
 Response: 64812802
 Conc: 558.26 ng/ml

Instrument :
 ECD_P
 ClientSampleId :
 PB144828BS

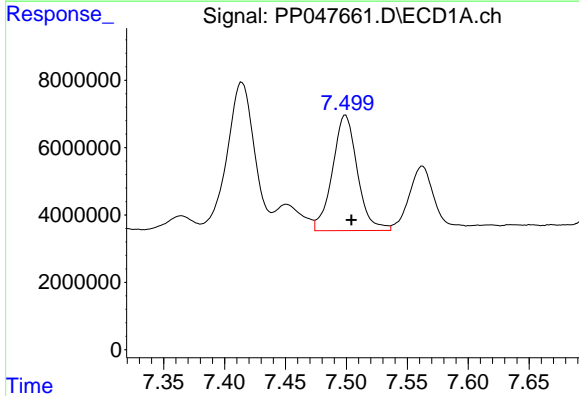
Manual Integrations
 APPROVED

Reviewed By :Yogesh Patel 05/18/2022
 Supervised By :mohammad ahmed 05/18/2022



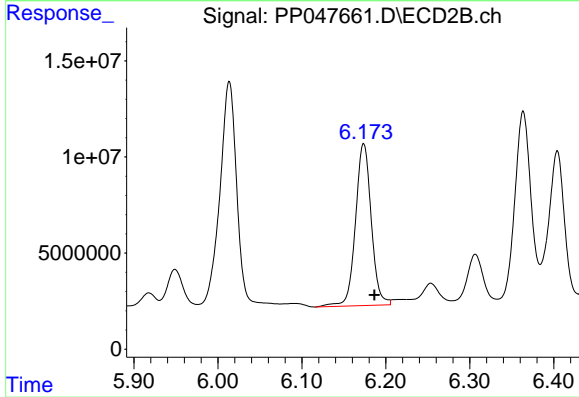
#32 AR-1260-2

R.T.: 6.014 min
 Delta R.T.: -0.013 min
 Response: 160064195
 Conc: 659.91 ng/ml



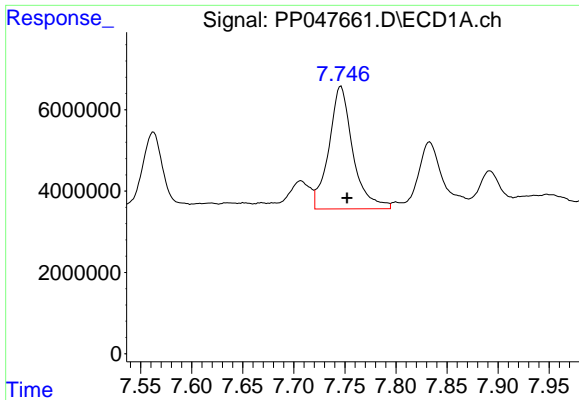
#33 AR-1260-3

R.T.: 7.499 min
 Delta R.T.: -0.005 min
 Response: 48868467
 Conc: 474.16 ng/ml



#33 AR-1260-3

R.T.: 6.174 min
 Delta R.T.: -0.013 min
 Response: 110058151
 Conc: 550.72 ng/ml



#34 AR-1260-4

R.T.: 7.746 min
 Delta R.T.: -0.006 min
 Response: 49254727
 Conc: 509.72 ng/ml

Instrument :

ECD_P

ClientSampleId :

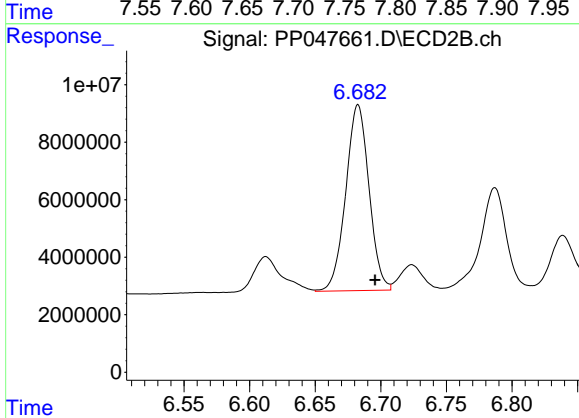
PB144828BS

Manual Integrations

APPROVED

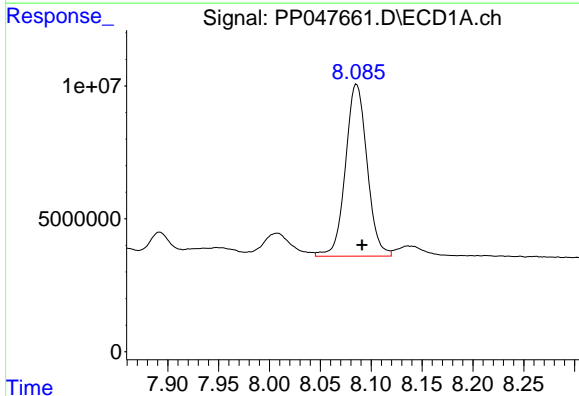
Reviewed By :Yogesh Patel 05/18/2022

Supervised By :mohammad ahmed 05/18/2022



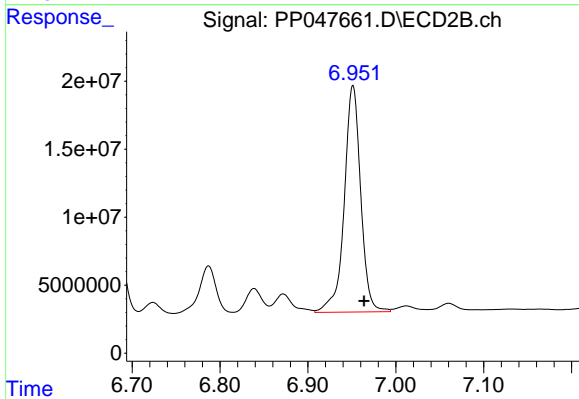
#34 AR-1260-4

R.T.: 6.683 min
 Delta R.T.: -0.013 min
 Response: 79908800
 Conc: 452.25 ng/ml



#35 AR-1260-5

R.T.: 8.086 min
 Delta R.T.: -0.005 min
 Response: 95777856
 Conc: 535.42 ng/ml



#35 AR-1260-5

R.T.: 6.951 min
 Delta R.T.: -0.013 min
 Response: 216772822
 Conc: 460.82 ng/ml