

Data Path : Z:\pestpcbsrv\HPCHEM1\ECD_P\Data\PP051821\
 Data File : PP035984.D
 Signal(s) : Signal #1: ECD1A.CH Signal #2: ECD2B.CH
 Acq On : 18 May 2021 1:55
 Operator : DD\AJ
 Sample : AR1254ICC750
 Misc :
 ALS Vial : 29 Sample Multiplier: 1

Instrument :
 ECD_P
 ClientSampleId :
 AR1254ICC750

Integration File signal 1: autoint1.e
 Integration File signal 2: autoint2.e
 Quant Time: May 18 05:20:44 2021
 Quant Method : Z:\pestpcbsrv\HPCHEM1\ECD_P\methods\PP051821.M
 Quant Title : GC EXTRACTABLES
 QLast Update : Tue May 18 05:19:44 2021
 Response via : Initial Calibration
 Integrator: ChemStation 6890 Scale Mode: Small noise peaks clipped

Volume Inj. : 2 µl
 Signal #1 Phase : ZB-MR1 Signal #2 Phase: ZB-MR2
 Signal #1 Info : 30Mx0.32mmx 0.50µ Signal #2 Info : 30M x 0.32mm x 0.25µm

Compound	RT#1	RT#2	Resp#1	Resp#2	ng/ml	ng/ml

System Monitoring Compounds						
1) SA Tetrachlo...	4.775	4.192	1480253	2338473	72.649	73.863
2) SA Decachlor...	10.604	9.423	954772	1542185	71.958	71.605
Target Compounds						
26) L6 AR-1254-1	6.975	6.289	476842	1065261	721.471	713.929
27) L6 AR-1254-2	7.203	6.445	724528	899991	717.134	707.254
28) L6 AR-1254-3	7.582	6.863	795001	1366216	729.481	719.817
29) L6 AR-1254-4	7.877	7.103	543995	1002900	753.352	717.658
30) L6 AR-1254-5	8.300	7.520	659362	1298318	731.691	719.223

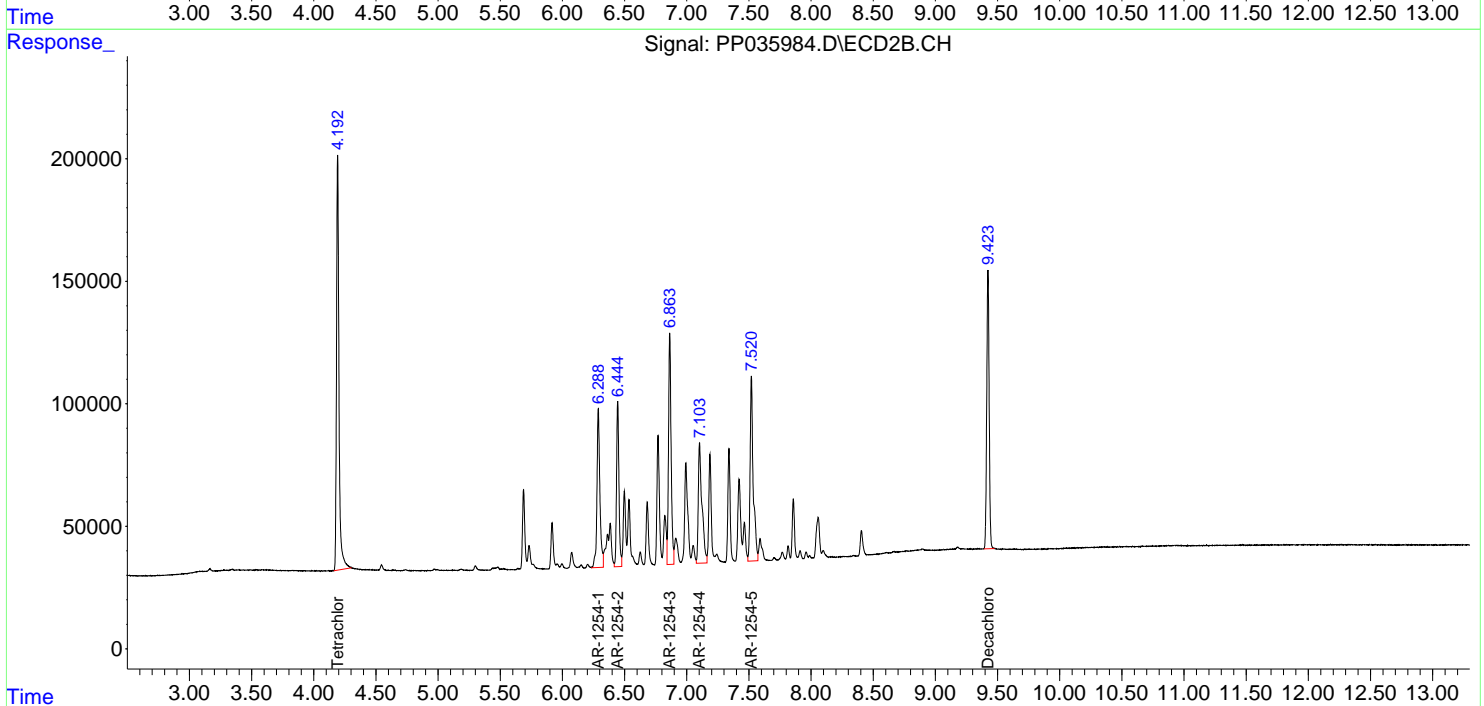
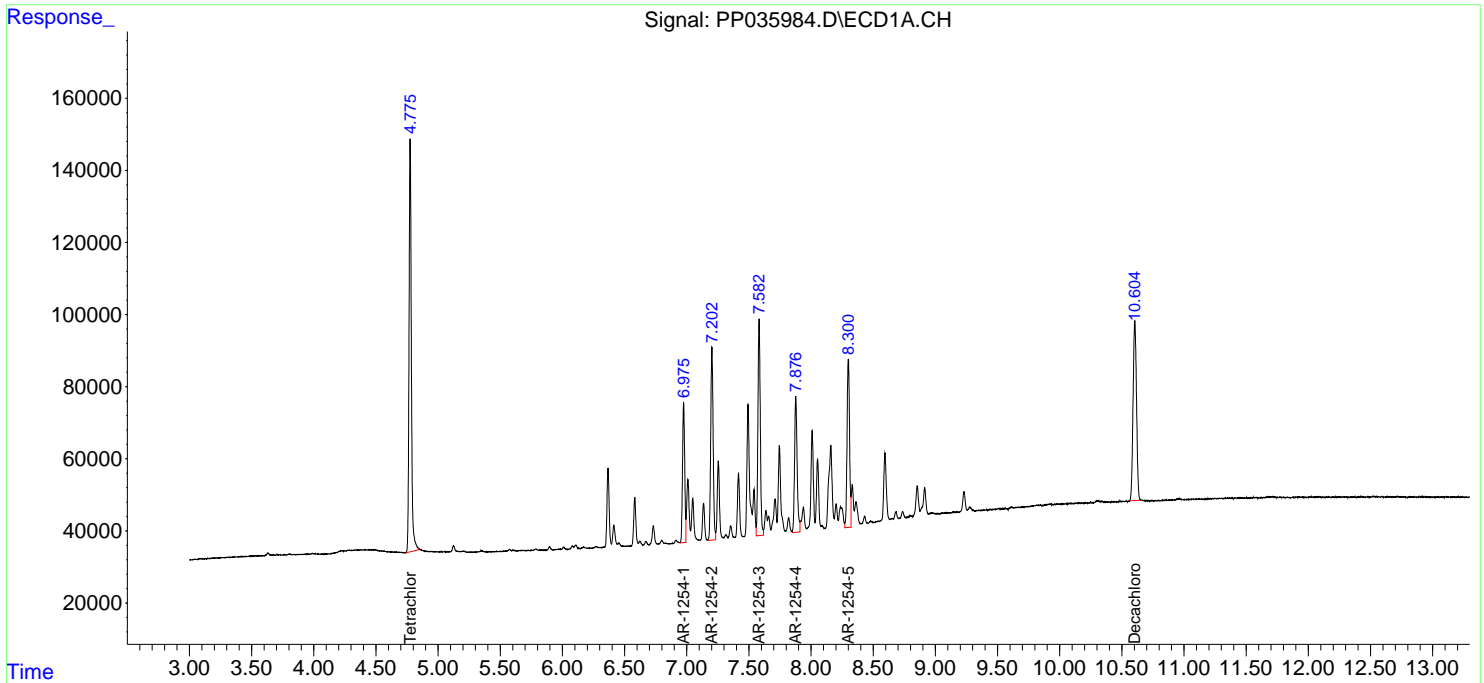
(f)=RT Delta > 1/2 Window (#)=Amounts differ by > 25% (m)=manual int.

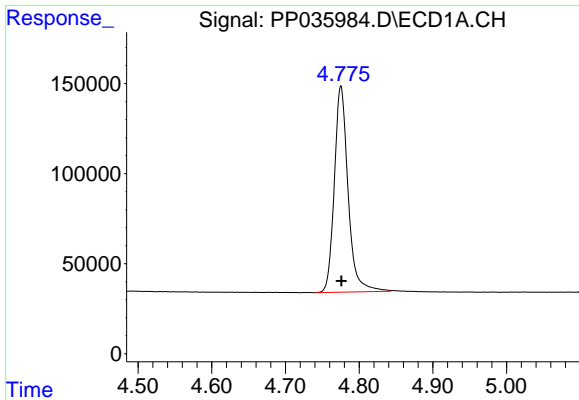
Data Path : Z:\pestpcbsrv\HPCHEM1\ECD_P\Data\PP051821\
 Data File : PP035984.D
 Signal(s) : Signal #1: ECD1A.CH Signal #2: ECD2B.CH
 Acq On : 18 May 2021 1:55
 Operator : DD\AJ
 Sample : AR1254ICC750
 Misc :
 ALS Vial : 29 Sample Multiplier: 1

Instrument :
 ECD_P
 Client Sampled :
 AR1254ICC750

Integration File signal 1: autoint1.e
 Integration File signal 2: autoint2.e
 Quant Time: May 18 05:20:44 2021
 Quant Method : Z:\pestpcbsrv\HPCHEM1\ECD_P\methods\PP051821.M
 Quant Title : GC EXTRACTABLES
 QLast Update : Tue May 18 05:19:44 2021
 Response via : Initial Calibration
 Integrator: ChemStation 6890 Scale Mode: Small noise peaks clipped

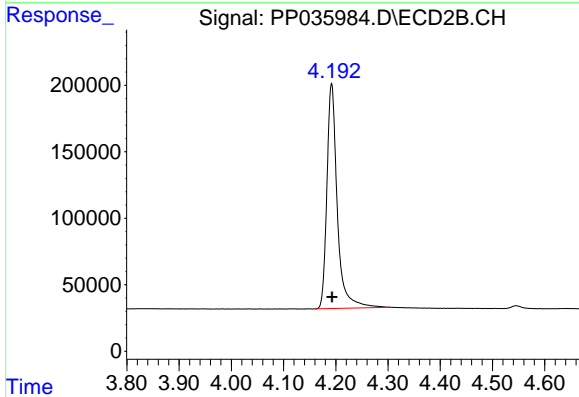
Volume Inj. : 2 µl
 Signal #1 Phase : ZB-MR1 Signal #2 Phase: ZB-MR2
 Signal #1 Info : 30Mx0.32mmx 0.50µ Signal #2 Info : 30M x 0.32mm x 0.25µm



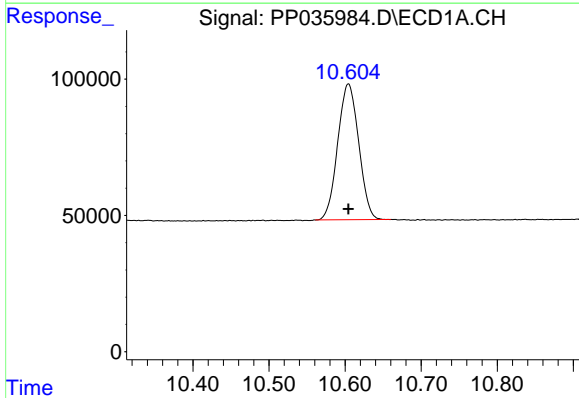


#1 Tetrachloro-m-xylene
 R.T.: 4.775 min
 Delta R.T.: 0.000 min
 Response: 1480253
 Conc: 72.65 ng/ml

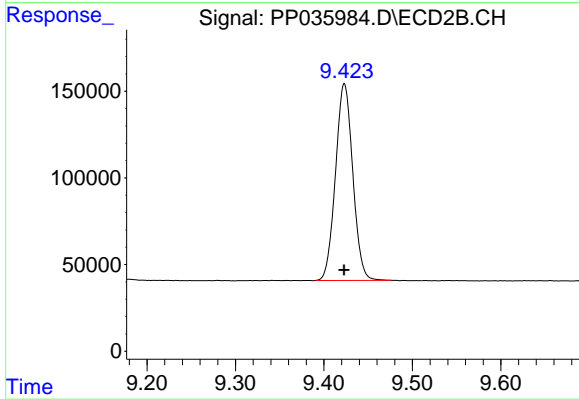
Instrument :
 ECD_P
 ClientSampleId :
 AR1254ICC750



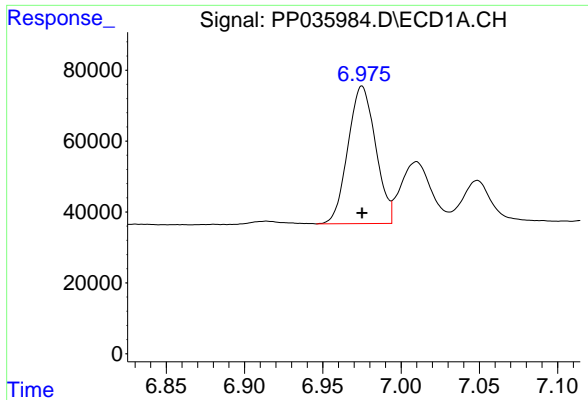
#1 Tetrachloro-m-xylene
 R.T.: 4.192 min
 Delta R.T.: 0.000 min
 Response: 2338473
 Conc: 73.86 ng/ml



#2 Decachlorobiphenyl
 R.T.: 10.604 min
 Delta R.T.: 0.000 min
 Response: 954772
 Conc: 71.96 ng/ml



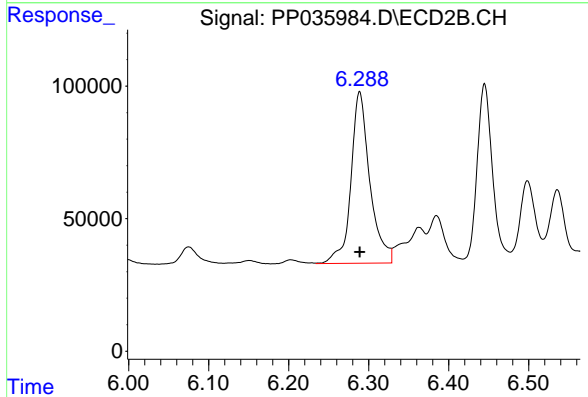
#2 Decachlorobiphenyl
 R.T.: 9.423 min
 Delta R.T.: 0.000 min
 Response: 1542185
 Conc: 71.60 ng/ml



#26 AR-1254-1

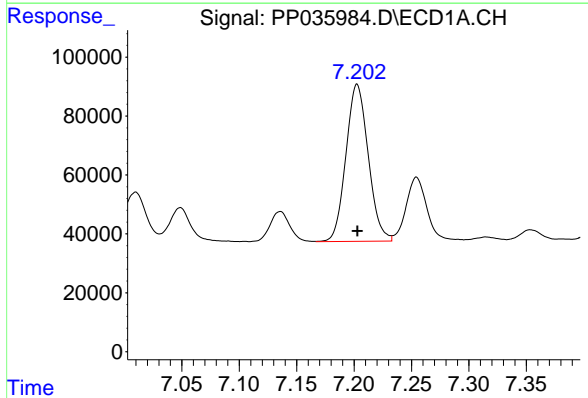
R.T.: 6.975 min
 Delta R.T.: 0.000 min
 Response: 476842
 Conc: 721.47 ng/ml

Instrument :
 ECD_P
 ClientSampleId :
 AR1254ICC750



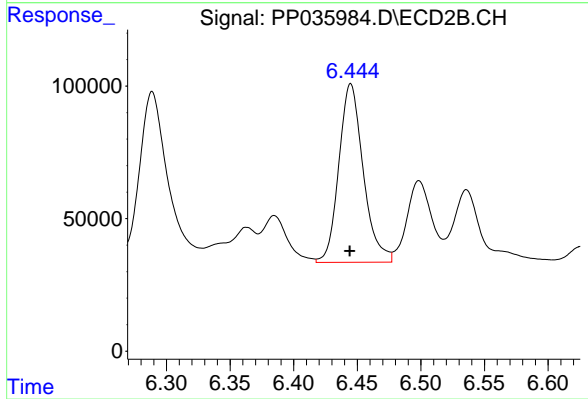
#26 AR-1254-1

R.T.: 6.289 min
 Delta R.T.: 0.000 min
 Response: 1065261
 Conc: 713.93 ng/ml



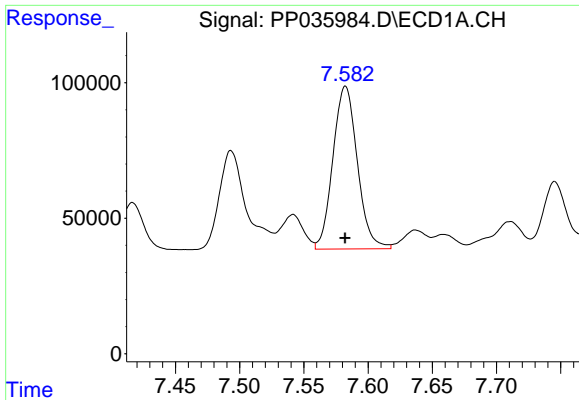
#27 AR-1254-2

R.T.: 7.203 min
 Delta R.T.: 0.000 min
 Response: 724528
 Conc: 717.13 ng/ml



#27 AR-1254-2

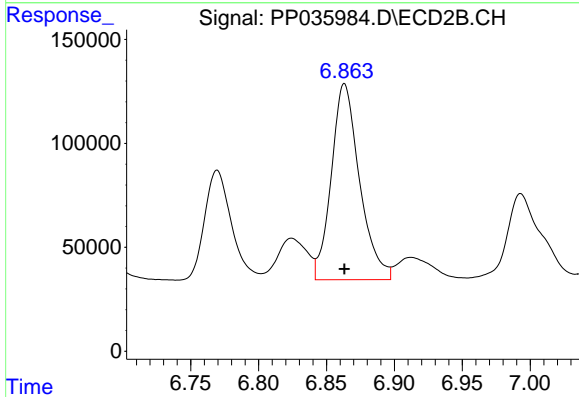
R.T.: 6.445 min
 Delta R.T.: 0.000 min
 Response: 899991
 Conc: 707.25 ng/ml



#28 AR-1254-3

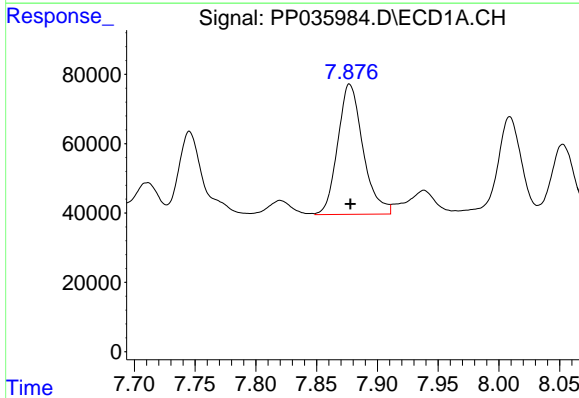
R.T.: 7.582 min
 Delta R.T.: 0.000 min
 Response: 795001
 Conc: 729.48 ng/ml

Instrument :
 ECD_P
 ClientSampleId :
 AR1254ICC750



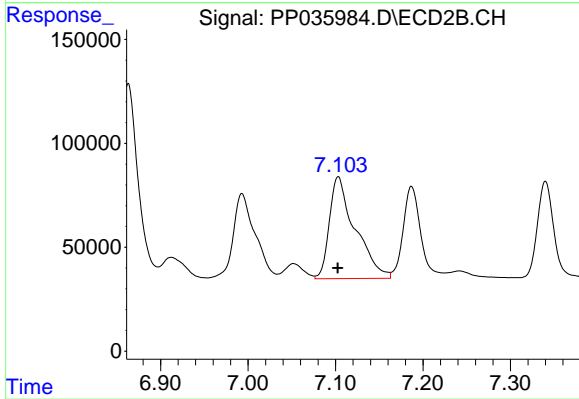
#28 AR-1254-3

R.T.: 6.863 min
 Delta R.T.: 0.000 min
 Response: 1366216
 Conc: 719.82 ng/ml



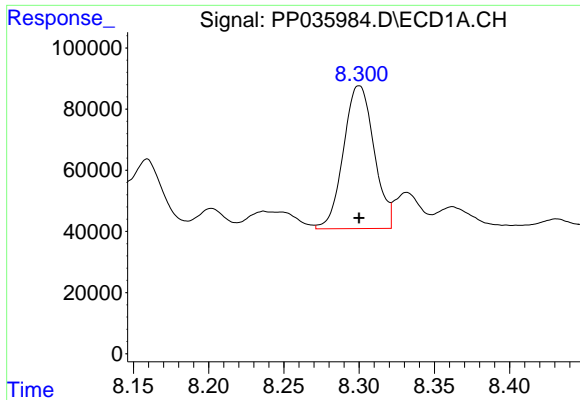
#29 AR-1254-4

R.T.: 7.877 min
 Delta R.T.: 0.000 min
 Response: 543995
 Conc: 753.35 ng/ml



#29 AR-1254-4

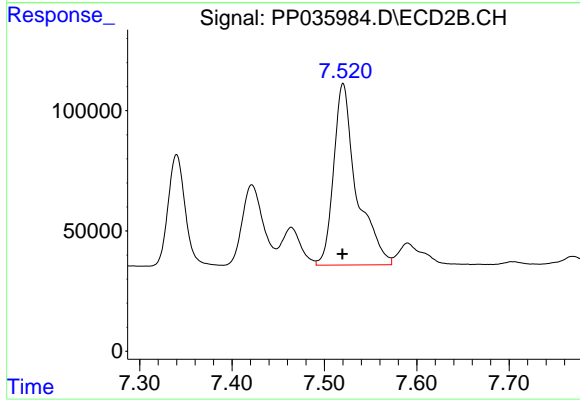
R.T.: 7.103 min
 Delta R.T.: 0.000 min
 Response: 1002900
 Conc: 717.66 ng/ml



#30 AR-1254-5

R.T.: 8.300 min
Delta R.T.: 0.000 min
Response: 659362
Conc: 731.69 ng/ml

Instrument :
ECD_P
ClientSampleId :
AR1254ICC750



#30 AR-1254-5

R.T.: 7.520 min
Delta R.T.: 0.000 min
Response: 1298318
Conc: 719.22 ng/ml