

Data Path : Z:\pestpcbsrv\HPCHEM1\ECD_P\Data\PP051821\
 Data File : PP035989.D
 Signal(s) : Signal #1: ECD1A.CH Signal #2: ECD2B.CH
 Acq On : 18 May 2021 3:18
 Operator : DD\AJ
 Sample : AR1262ICC750
 Misc :
 ALS Vial : 34 Sample Multiplier: 1

Instrument :
 ECD_P
 ClientSampleId :
 AR1262ICC750

Integration File signal 1: autoint1.e
 Integration File signal 2: autoint2.e
 Quant Time: May 18 05:45:01 2021
 Quant Method : Z:\pestpcbsrv\HPCHEM1\ECD_P\methods\PP051821.M
 Quant Title : GC EXTRACTABLES
 QLast Update : Tue May 18 05:44:08 2021
 Response via : Initial Calibration
 Integrator: ChemStation 6890 Scale Mode: Small noise peaks clipped

Volume Inj. : 2 µl
 Signal #1 Phase : ZB-MR1 Signal #2 Phase: ZB-MR2
 Signal #1 Info : 30Mx0.32mmx 0.50µ Signal #2 Info : 30M x 0.32mm x 0.25µm

Compound	RT#1	RT#2	Resp#1	Resp#2	ng/ml	ng/ml

System Monitoring Compounds						
1) SA Tetrachlo...	4.776	4.192	1464666	2300694	71.214	72.743
2) SA Decachlor...	10.604	9.423	964543	1569060	70.178	70.667
Target Compounds						
36) L8 AR-1262-1	8.373	7.519	729009	639065	702.329	712.796
37) L8 AR-1262-2	8.914	8.060	1260599	2148529	700.370	713.951
38) L8 AR-1262-3	9.206	8.340	915726	893826	707.176	707.592
39) L8 AR-1262-4	9.293	8.405	722477	1646608	722.629	715.631
40) L8 AR-1262-5	9.919	8.897	474703	763061	707.356	709.022

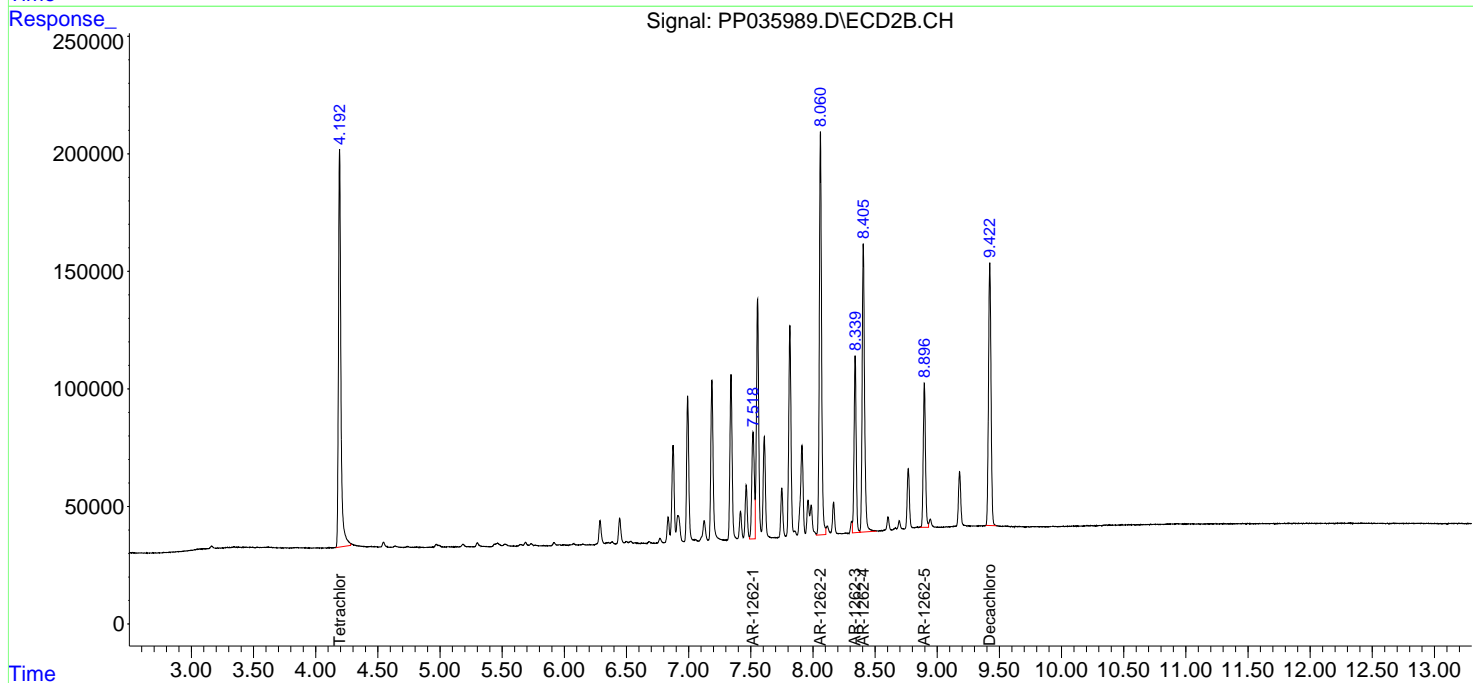
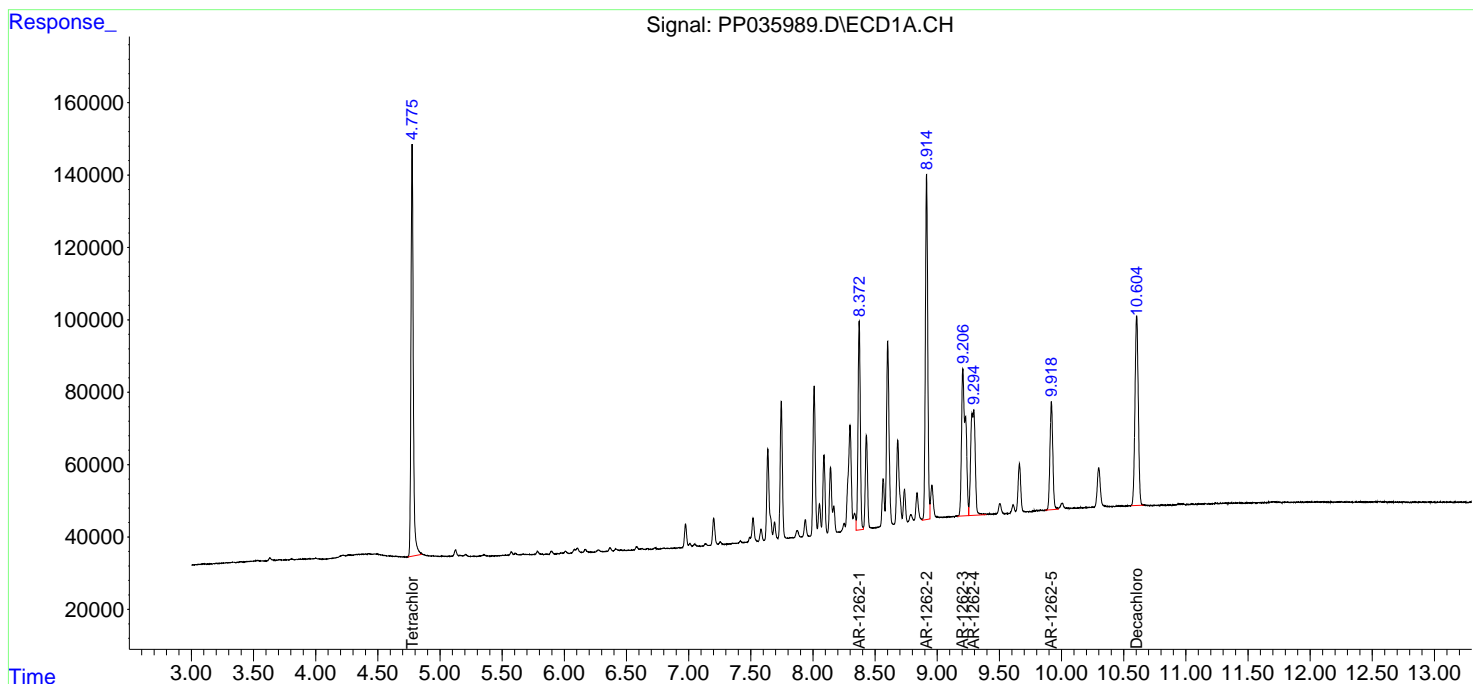
(f)=RT Delta > 1/2 Window (#)=Amounts differ by > 25% (m)=manual int.

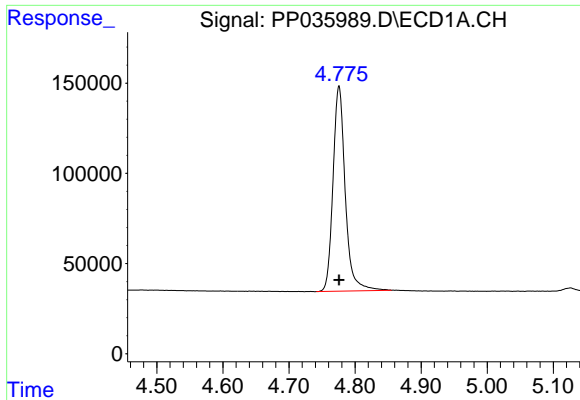
Data Path : Z:\pestpcbsrv\HPCHEM1\ECD_P\Data\PP051821\
 Data File : PP035989.D
 Signal(s) : Signal #1: ECD1A.CH Signal #2: ECD2B.CH
 Acq On : 18 May 2021 3:18
 Operator : DD\AJ
 Sample : AR1262ICC750
 Misc :
 ALS Vial : 34 Sample Multiplier: 1

Instrument :
 ECD_P
 ClientSampled :
 AR1262ICC750

Integration File signal 1: autoint1.e
 Integration File signal 2: autoint2.e
 Quant Time: May 18 05:45:01 2021
 Quant Method : Z:\pestpcbsrv\HPCHEM1\ECD_P\methods\PP051821.M
 Quant Title : GC EXTRACTABLES
 QLast Update : Tue May 18 05:44:08 2021
 Response via : Initial Calibration
 Integrator: ChemStation 6890 Scale Mode: Small noise peaks clipped

Volume Inj. : 2 µl
 Signal #1 Phase : ZB-MR1 Signal #2 Phase: ZB-MR2
 Signal #1 Info : 30Mx0.32mmx 0.50µ Signal #2 Info : 30M x 0.32mm x 0.25µm

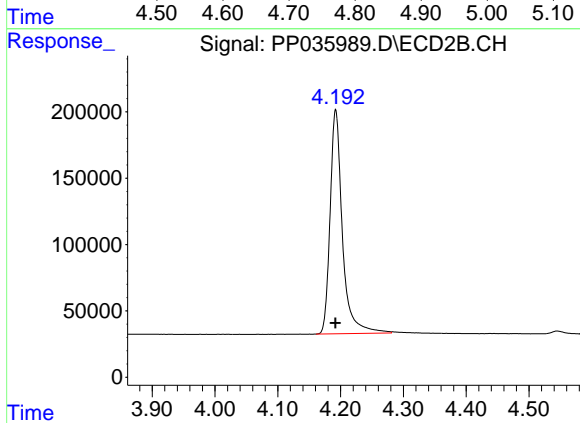




#1 Tetrachloro-m-xylene

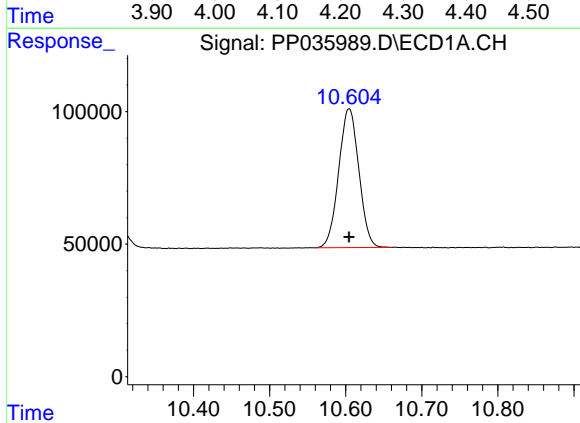
R.T.: 4.776 min
 Delta R.T.: 0.000 min
 Response: 1464666
 Conc: 71.21 ng/ml

Instrument :
 ECD_P
 ClientSampleId :
 AR1262ICC750



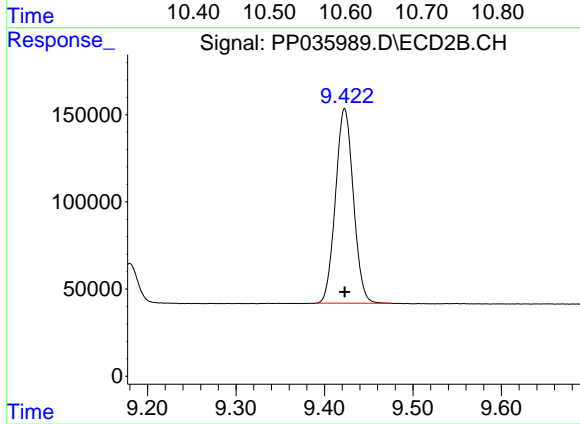
#1 Tetrachloro-m-xylene

R.T.: 4.192 min
 Delta R.T.: 0.000 min
 Response: 2300694
 Conc: 72.74 ng/ml



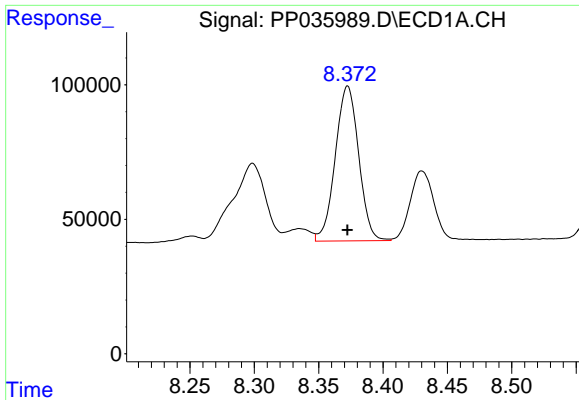
#2 Decachlorobiphenyl

R.T.: 10.604 min
 Delta R.T.: 0.000 min
 Response: 964543
 Conc: 70.18 ng/ml



#2 Decachlorobiphenyl

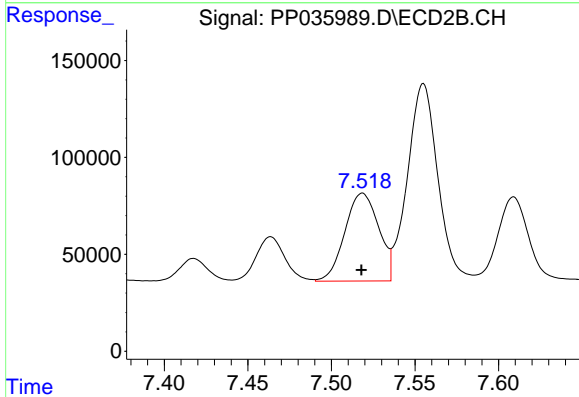
R.T.: 9.423 min
 Delta R.T.: 0.000 min
 Response: 1569060
 Conc: 70.67 ng/ml



#36 AR-1262-1

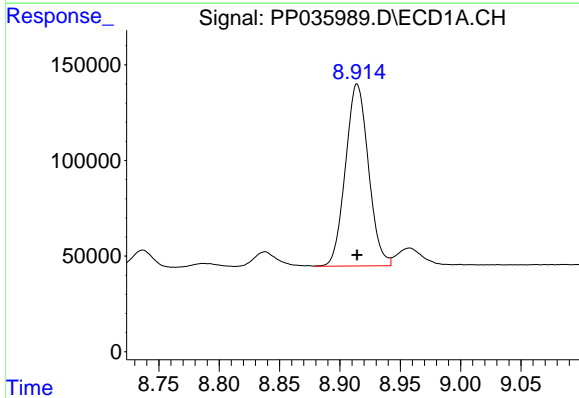
R.T.: 8.373 min
 Delta R.T.: 0.000 min
 Response: 729009
 Conc: 702.33 ng/ml

Instrument :
 ECD_P
 ClientSampleId :
 AR1262ICC750



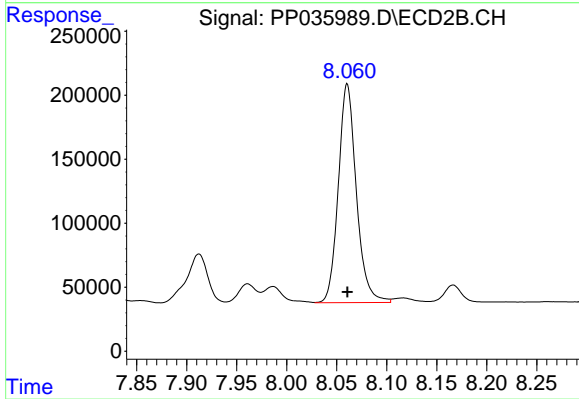
#36 AR-1262-1

R.T.: 7.519 min
 Delta R.T.: 0.000 min
 Response: 639065
 Conc: 712.80 ng/ml



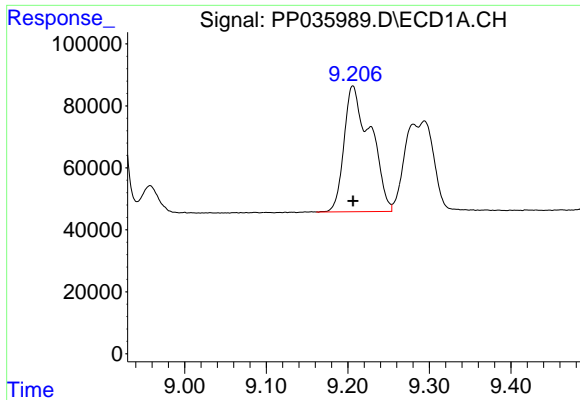
#37 AR-1262-2

R.T.: 8.914 min
 Delta R.T.: 0.000 min
 Response: 1260599
 Conc: 700.37 ng/ml



#37 AR-1262-2

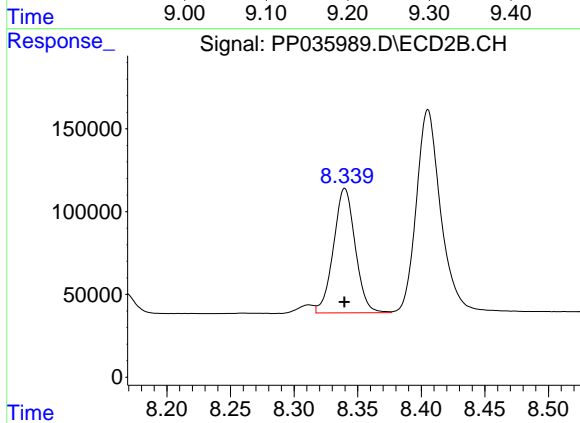
R.T.: 8.060 min
 Delta R.T.: 0.000 min
 Response: 2148529
 Conc: 713.95 ng/ml



#38 AR-1262-3

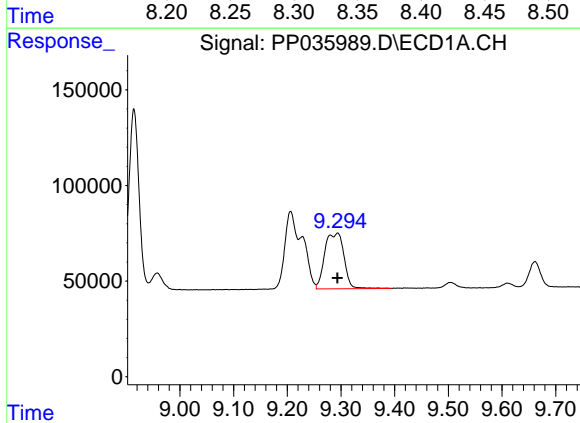
R.T.: 9.206 min
 Delta R.T.: 0.000 min
 Response: 915726
 Conc: 707.18 ng/ml

Instrument :
 ECD_P
 ClientSampleId :
 AR1262ICC750



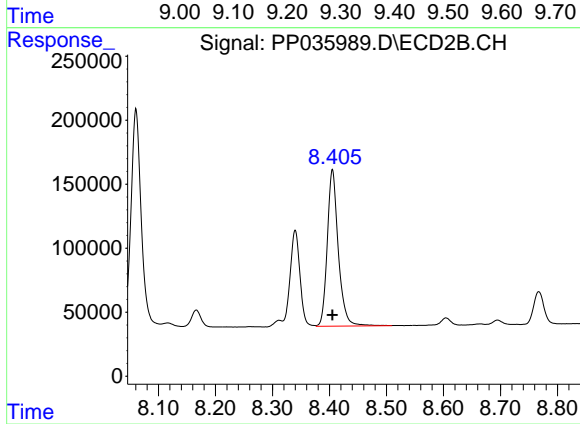
#38 AR-1262-3

R.T.: 8.340 min
 Delta R.T.: 0.000 min
 Response: 893826
 Conc: 707.59 ng/ml



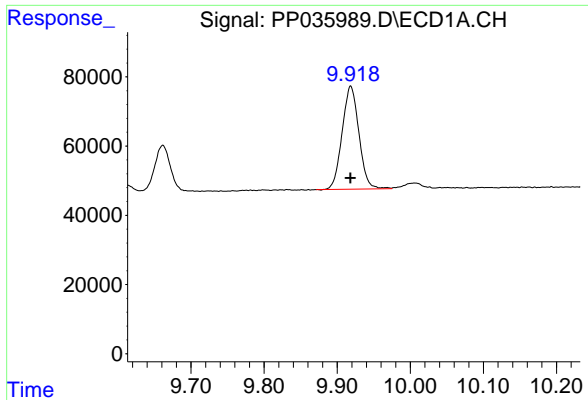
#39 AR-1262-4

R.T.: 9.293 min
 Delta R.T.: 0.000 min
 Response: 722477
 Conc: 722.63 ng/ml



#39 AR-1262-4

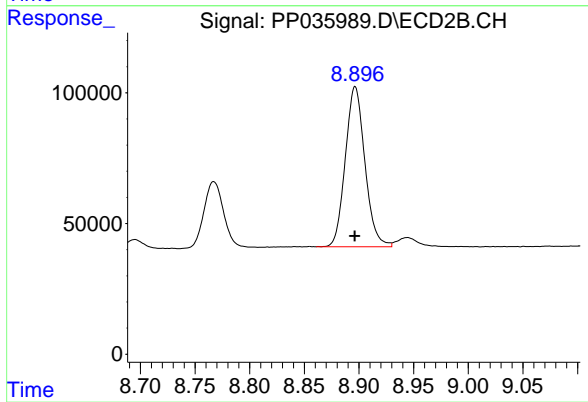
R.T.: 8.405 min
 Delta R.T.: 0.000 min
 Response: 1646608
 Conc: 715.63 ng/ml



#40 AR-1262-5

R.T.: 9.919 min
Delta R.T.: 0.000 min
Response: 474703
Conc: 707.36 ng/ml

Instrument :
ECD_P
ClientSampled :
AR1262ICC750



#40 AR-1262-5

R.T.: 8.897 min
Delta R.T.: 0.000 min
Response: 763061
Conc: 709.02 ng/ml