

Data Path : Z:\pestpcbsrv\HPCHEM1\ECD_P\Data\PP051821\
 Data File : PP035993.D
 Signal(s) : Signal #1: ECD1A.CH Signal #2: ECD2B.CH
 Acq On : 18 May 2021 4:25
 Operator : DD\AJ
 Sample : AR1268ICC1000
 Misc :
 ALS Vial : 38 Sample Multiplier: 1

Instrument :
 ECD_P
 ClientSampleId :
 AR1268ICC1000

Integration File signal 1: autoint1.e
 Integration File signal 2: autoint2.e
 Quant Time: May 18 06:05:05 2021
 Quant Method : Z:\pestpcbsrv\HPCHEM1\ECD_P\methods\PP051821.M
 Quant Title : GC EXTRACTABLES
 QLast Update : Tue May 18 06:04:37 2021
 Response via : Initial Calibration
 Integrator: ChemStation 6890 Scale Mode: Small noise peaks clipped

Volume Inj. : 2 µl
 Signal #1 Phase : ZB-MR1 Signal #2 Phase: ZB-MR2
 Signal #1 Info : 30Mx0.32mmx 0.50µ Signal #2 Info : 30M x 0.32mm x 0.25µm

Compound	RT#1	RT#2	Resp#1	Resp#2	ng/ml	ng/ml

System Monitoring Compounds						
1) SA Tetrachlo...	4.776	4.192	1834662	2921704	93.889	94.972
2) SA Decachlor...	10.604	9.424	2036760	3348880	93.490	93.829
Target Compounds						
41) L9 AR-1268-1	9.206	8.340	1841321	3114730	922.285	932.933
42) L9 AR-1268-2	9.296	8.406	1738739	2908217	927.665	930.638
43) L9 AR-1268-3	9.504	8.605	1473875	2444348	914.678	927.811
44) L9 AR-1268-4	9.918	8.897	628000	1056761	927.366	958.953
45) L9 AR-1268-5	10.299	9.181	4351985	7433210	945.108	963.157

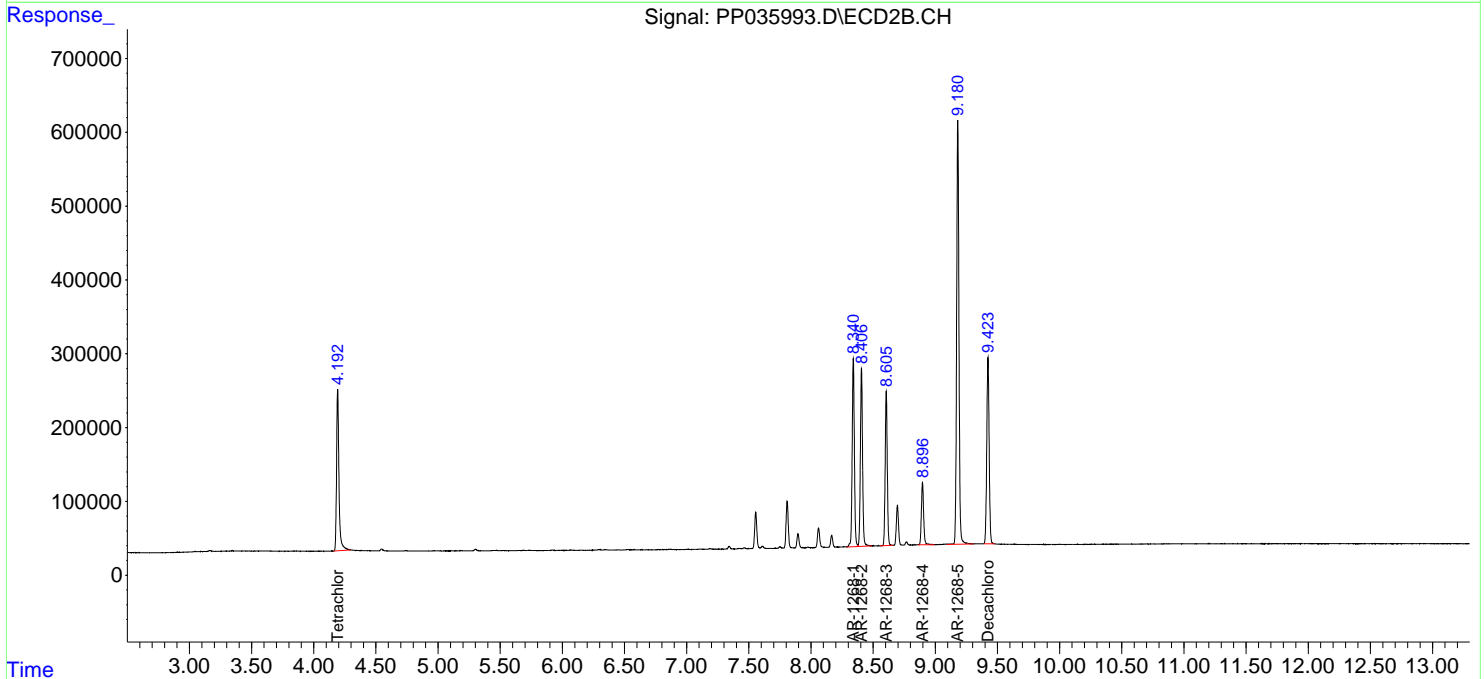
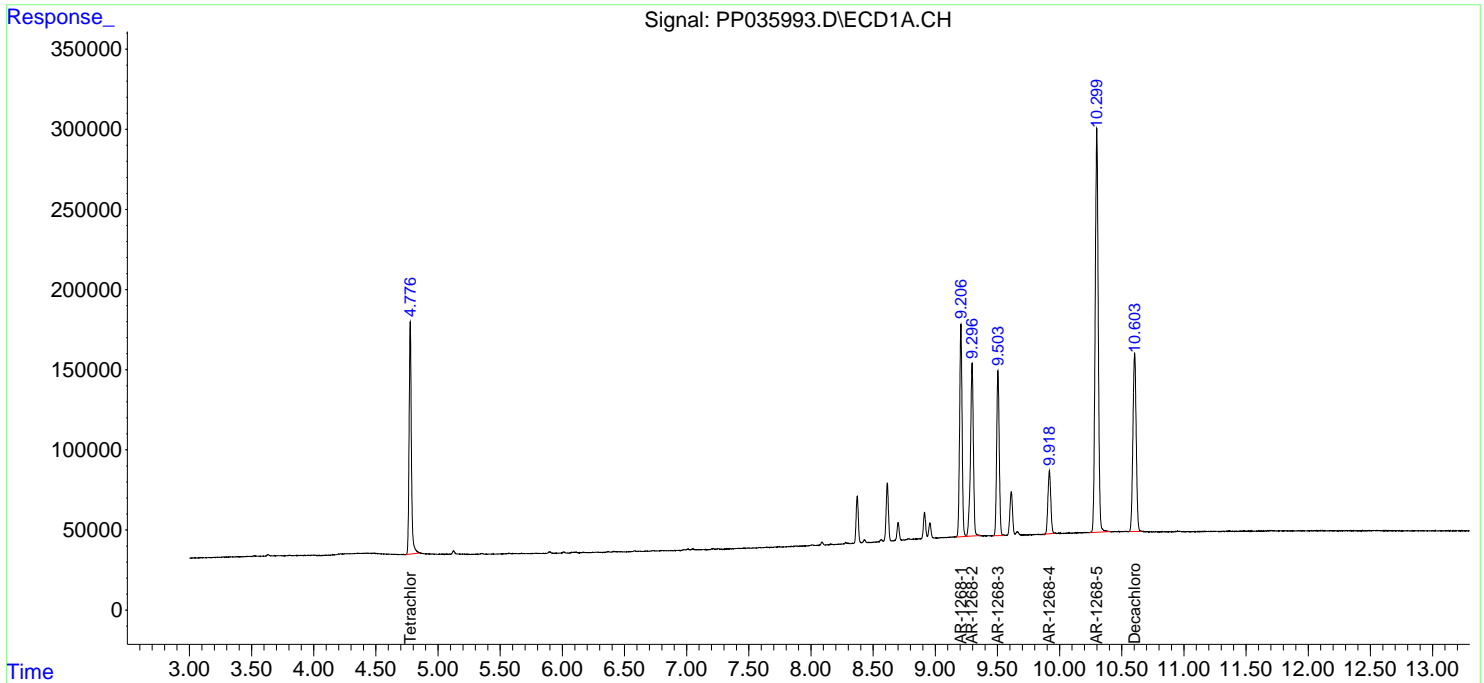
(f)=RT Delta > 1/2 Window (#)=Amounts differ by > 25% (m)=manual int.

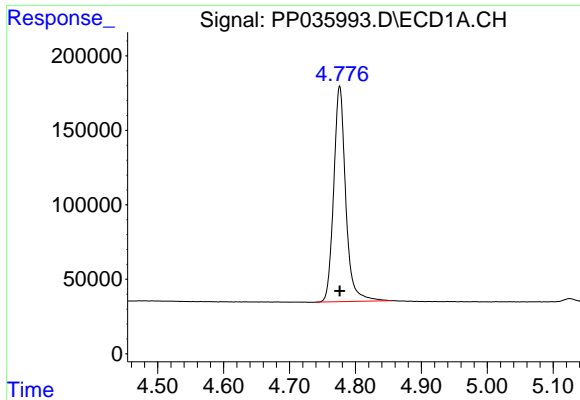
Data Path : Z:\pestpcbsrv\HPCHEM1\ECD_P\Data\PP051821\
 Data File : PP035993.D
 Signal(s) : Signal #1: ECD1A.CH Signal #2: ECD2B.CH
 Acq On : 18 May 2021 4:25
 Operator : DD\AJ
 Sample : AR1268ICC1000
 Misc :
 ALS Vial : 38 Sample Multiplier: 1

Instrument :
 ECD_P
 ClientSampleId :
 AR1268ICC1000

Integration File signal 1: autoint1.e
 Integration File signal 2: autoint2.e
 Quant Time: May 18 06:05:05 2021
 Quant Method : Z:\pestpcbsrv\HPCHEM1\ECD_P\methods\PP051821.M
 Quant Title : GC EXTRACTABLES
 QLast Update : Tue May 18 06:04:37 2021
 Response via : Initial Calibration
 Integrator: ChemStation 6890 Scale Mode: Small noise peaks clipped

Volume Inj. : 2 µl
 Signal #1 Phase : ZB-MR1 Signal #2 Phase: ZB-MR2
 Signal #1 Info : 30Mx0.32mmx 0.50µ Signal #2 Info : 30M x 0.32mm x 0.25µm

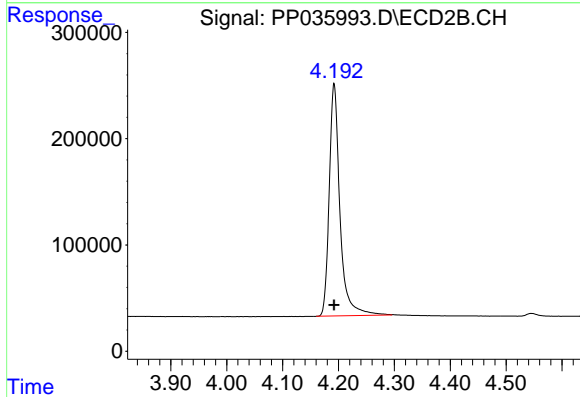




#1 Tetrachloro-m-xylene

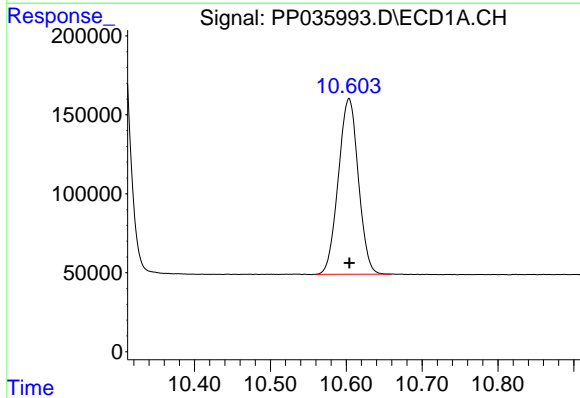
R.T.: 4.776 min
 Delta R.T.: 0.000 min
 Response: 1834662
 Conc: 93.89 ng/ml

Instrument :
 ECD_P
 ClientSampleId :
 AR1268ICC1000



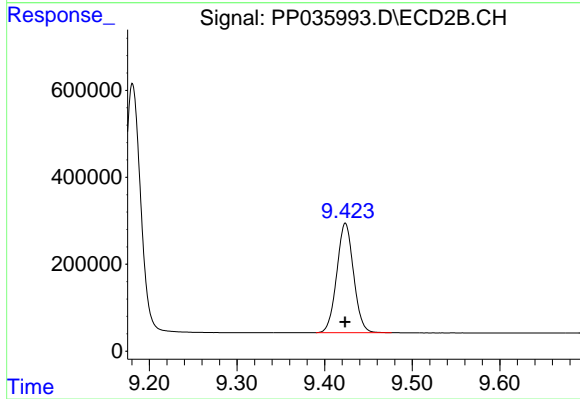
#1 Tetrachloro-m-xylene

R.T.: 4.192 min
 Delta R.T.: 0.000 min
 Response: 2921704
 Conc: 94.97 ng/ml



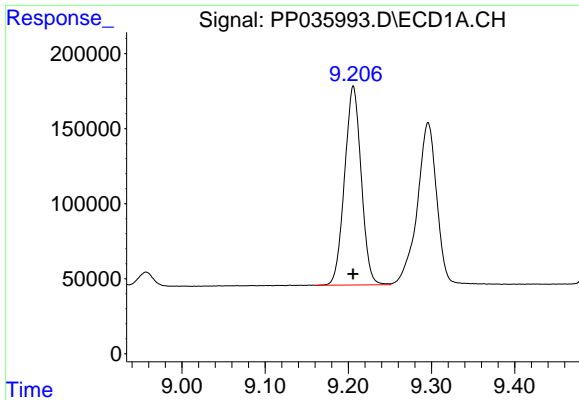
#2 Decachlorobiphenyl

R.T.: 10.604 min
 Delta R.T.: 0.000 min
 Response: 2036760
 Conc: 93.49 ng/ml



#2 Decachlorobiphenyl

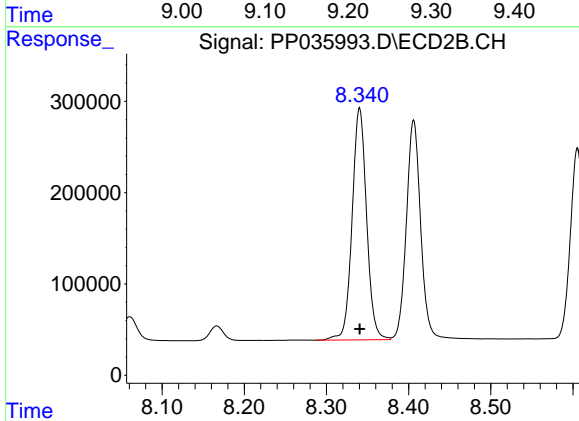
R.T.: 9.424 min
 Delta R.T.: 0.000 min
 Response: 3348880
 Conc: 93.83 ng/ml



#41 AR-1268-1

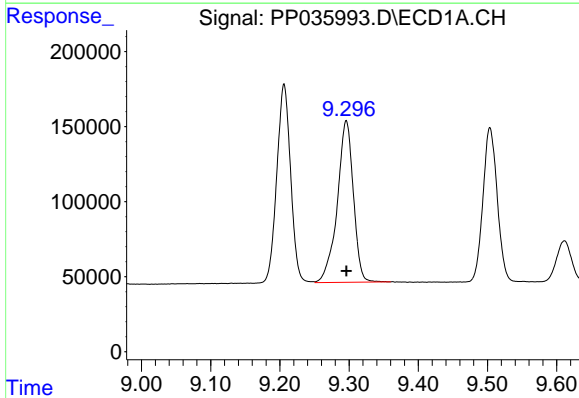
R.T.: 9.206 min
Delta R.T.: 0.000 min
Response: 1841321
Conc: 922.28 ng/ml

Instrument :
ECD_P
ClientSampleId :
AR1268ICC1000



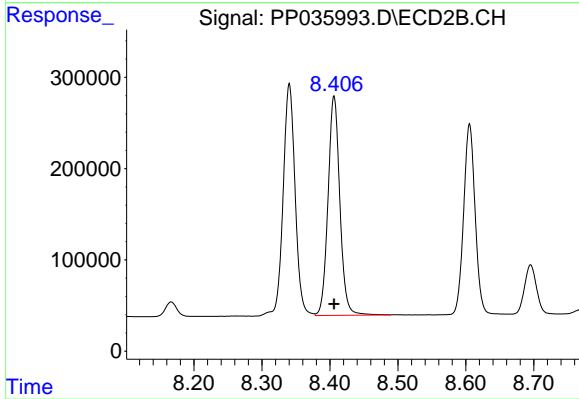
#41 AR-1268-1

R.T.: 8.340 min
Delta R.T.: 0.000 min
Response: 3114730
Conc: 932.93 ng/ml



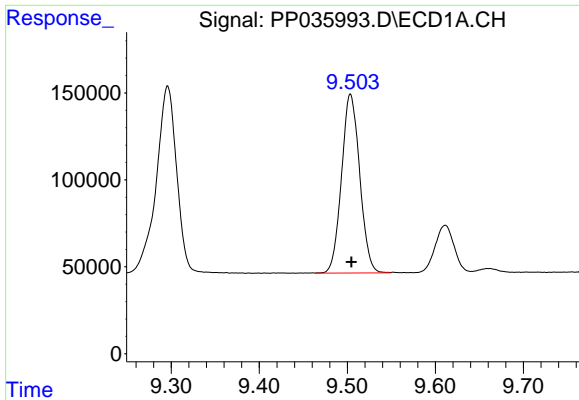
#42 AR-1268-2

R.T.: 9.296 min
Delta R.T.: 0.000 min
Response: 1738739
Conc: 927.67 ng/ml



#42 AR-1268-2

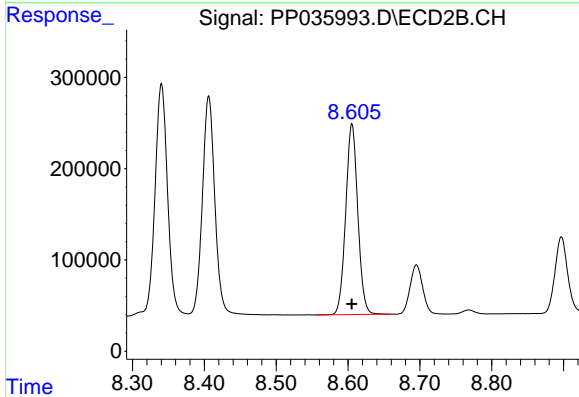
R.T.: 8.406 min
Delta R.T.: 0.000 min
Response: 2908217
Conc: 930.64 ng/ml



#43 AR-1268-3

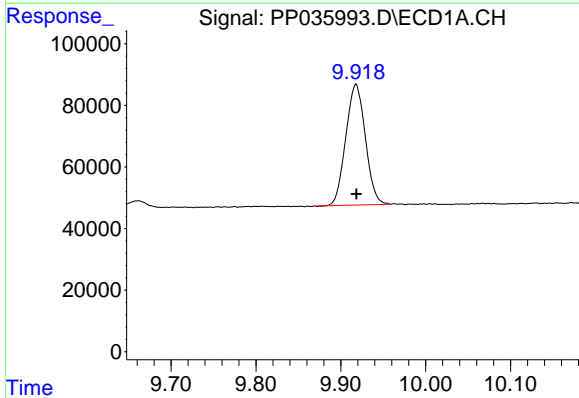
R.T.: 9.504 min
 Delta R.T.: -0.001 min
 Response: 1473875
 Conc: 914.68 ng/ml

Instrument :
 ECD_P
 ClientSampleId :
 AR1268ICC1000



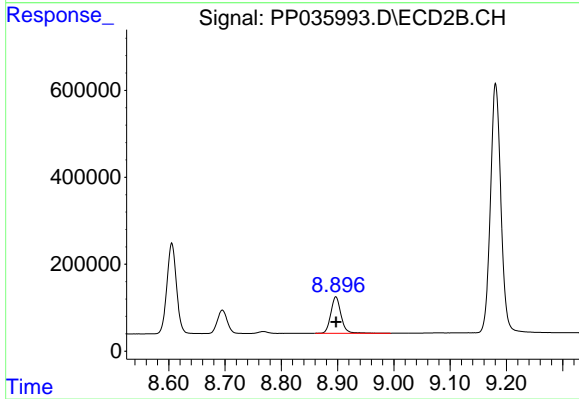
#43 AR-1268-3

R.T.: 8.605 min
 Delta R.T.: 0.000 min
 Response: 2444348
 Conc: 927.81 ng/ml



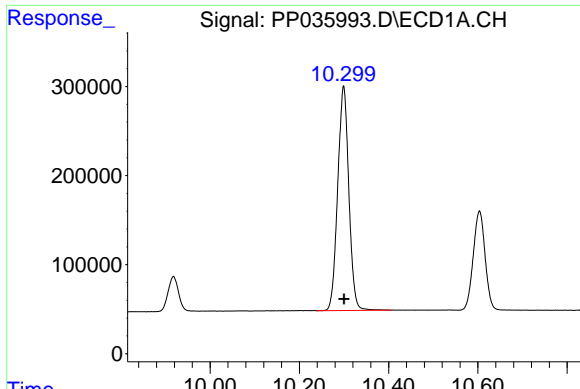
#44 AR-1268-4

R.T.: 9.918 min
 Delta R.T.: 0.000 min
 Response: 628000
 Conc: 927.37 ng/ml



#44 AR-1268-4

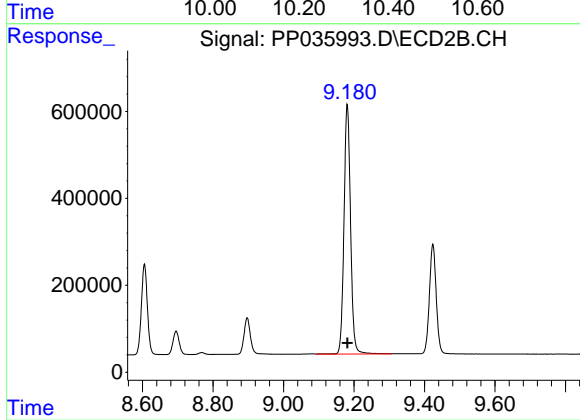
R.T.: 8.897 min
 Delta R.T.: 0.000 min
 Response: 1056761
 Conc: 958.95 ng/ml



#45 AR-1268-5

R.T.: 10.299 min
Delta R.T.: 0.000 min
Response: 4351985
Conc: 945.11 ng/ml

Instrument :
ECD_P
ClientSampled :
AR1268ICC1000



#45 AR-1268-5

R.T.: 9.181 min
Delta R.T.: 0.000 min
Response: 7433210
Conc: 963.16 ng/ml