

Data Path : Z:\pestpcbsrv\HPCHEM1\ECD_P\Data\PP051821\
 Data File : PP036024.D
 Signal(s) : Signal #1: ECD1A.CH Signal #2: ECD2B.CH
 Acq On : 18 May 2021 14:41
 Operator : DD\AJ
 Sample : AR1221CCC500
 Misc :
 ALS Vial : 4 Sample Multiplier: 1

Instrument :
 ECD_P
 ClientSampleId :
 AR1221CCC500

Integration File signal 1: autoint1.e
 Integration File signal 2: autoint2.e
 Quant Time: May 18 18:04:44 2021
 Quant Method : Z:\pestpcbsrv\HPCHEM1\ECD_P\methods\PP051821.M
 Quant Title : GC EXTRACTABLES
 QLast Update : Tue May 18 06:25:23 2021
 Response via : Initial Calibration
 Integrator: ChemStation 6890 Scale Mode: Small noise peaks clipped

Volume Inj. : 2 µl
 Signal #1 Phase : ZB-MR1 Signal #2 Phase: ZB-MR2
 Signal #1 Info : 30Mx0.32mmx 0.50µ Signal #2 Info : 30M x 0.32mm x 0.25µm

Compound	RT#1	RT#2	Resp#1	Resp#2	ng/ml	ng/ml

System Monitoring Compounds						
1) SA Tetrachlo...	4.779	4.189	1095428	1611826	50.711	50.426
2) SA Decachlor...	10.608	9.423	725976	1074371	53.635	54.410
Target Compounds						
8) L2 AR-1221-1	5.025	4.443	123179	190919	500.807	547.007
9) L2 AR-1221-2	5.123	4.542	93208	141296	512.609	531.314
10) L2 AR-1221-3	5.208	4.629	287996	447675	510.759	528.902

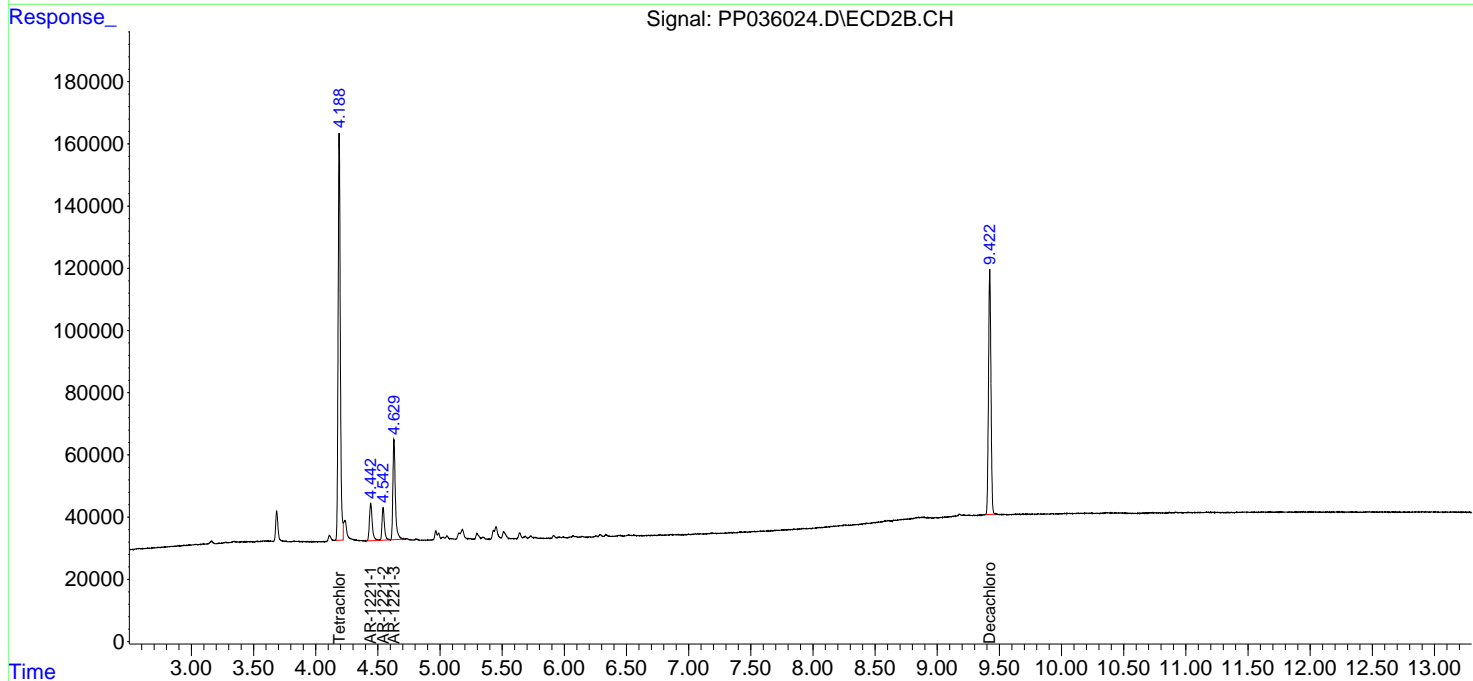
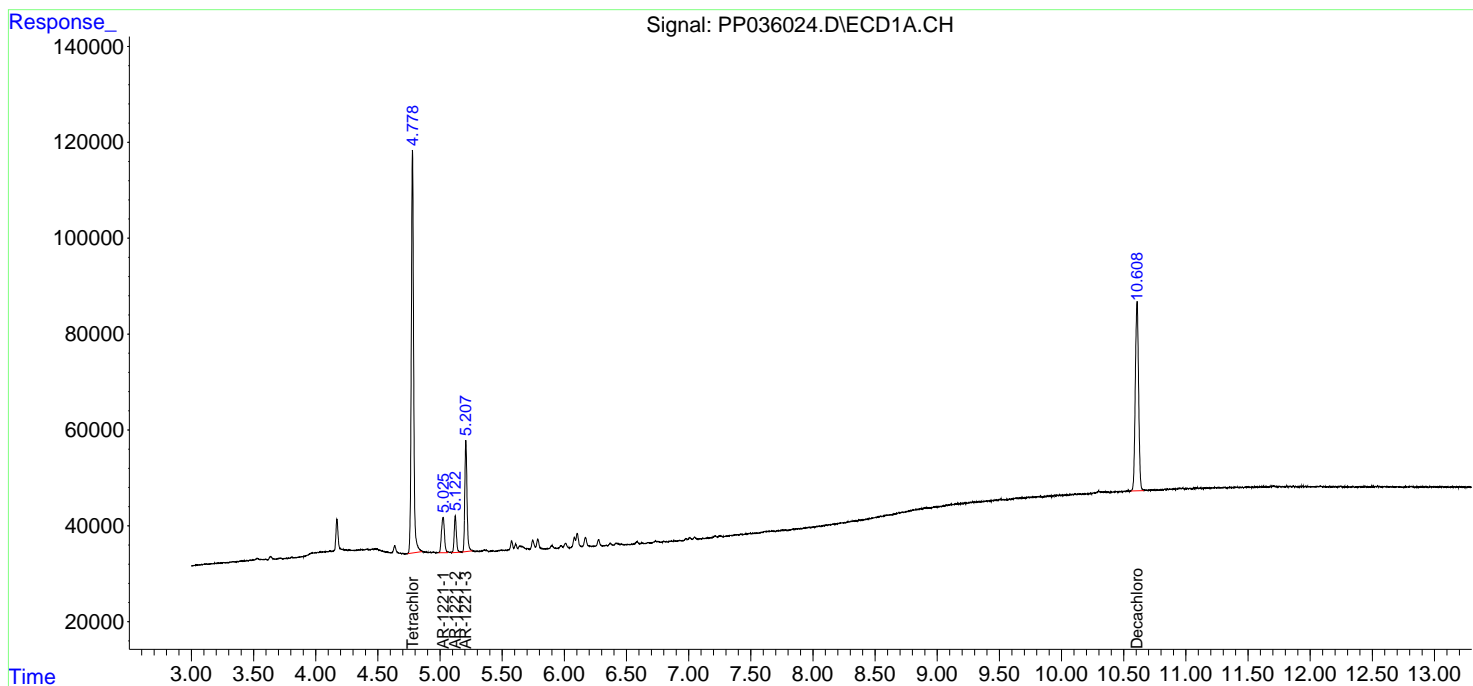
(f)=RT Delta > 1/2 Window (#)=Amounts differ by > 25% (m)=manual int.

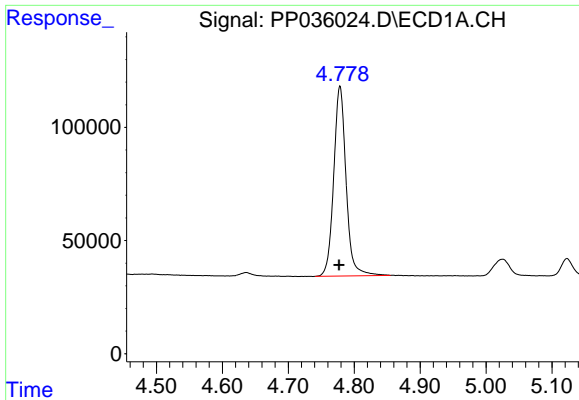
Data Path : Z:\pestpcbsrv\HPCHEM1\ECD_P\Data\PP051821\
 Data File : PP036024.D
 Signal(s) : Signal #1: ECD1A.CH Signal #2: ECD2B.CH
 Acq On : 18 May 2021 14:41
 Operator : DD\AJ
 Sample : AR1221CCC500
 Misc :
 ALS Vial : 4 Sample Multiplier: 1

Instrument :
 ECD_P
 ClientSampleId :
 AR1221CCC500

Integration File signal 1: autoint1.e
 Integration File signal 2: autoint2.e
 Quant Time: May 18 18:04:44 2021
 Quant Method : Z:\pestpcbsrv\HPCHEM1\ECD_P\methods\PP051821.M
 Quant Title : GC EXTRACTABLES
 QLast Update : Tue May 18 06:25:23 2021
 Response via : Initial Calibration
 Integrator: ChemStation 6890 Scale Mode: Small noise peaks clipped

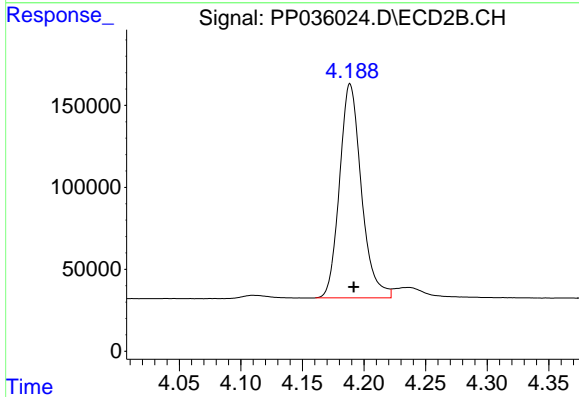
Volume Inj. : 2 µl
 Signal #1 Phase : ZB-MR1 Signal #2 Phase: ZB-MR2
 Signal #1 Info : 30Mx0.32mmx 0.50µ Signal #2 Info : 30M x 0.32mm x 0.25µm



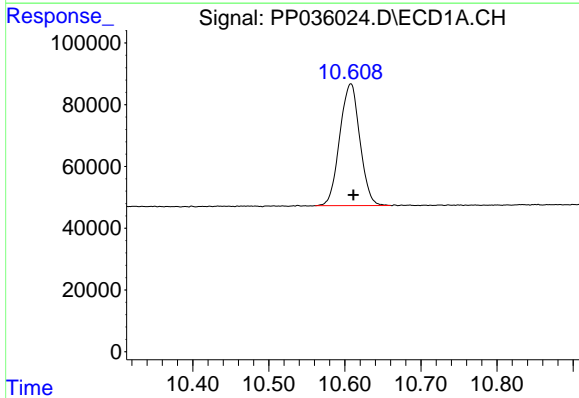


#1 Tetrachloro-m-xylene
 R.T.: 4.779 min
 Delta R.T.: 0.002 min
 Response: 1095428
 Conc: 50.71 ng/ml

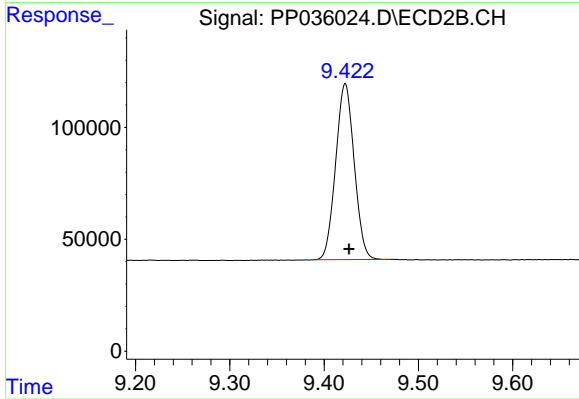
Instrument :
 ECD_P
ClientSampleId :
 AR1221CCC500



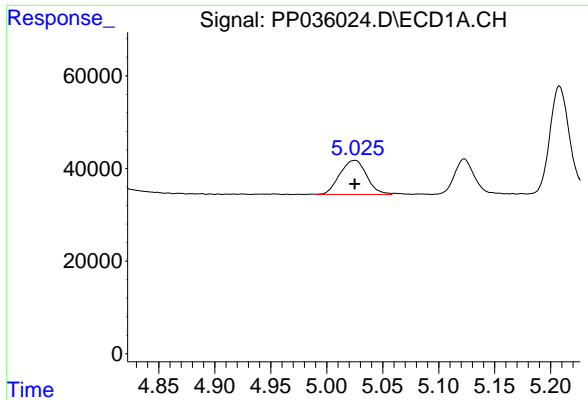
#1 Tetrachloro-m-xylene
 R.T.: 4.189 min
 Delta R.T.: -0.003 min
 Response: 1611826
 Conc: 50.43 ng/ml



#2 Decachlorobiphenyl
 R.T.: 10.608 min
 Delta R.T.: -0.003 min
 Response: 725976
 Conc: 53.64 ng/ml



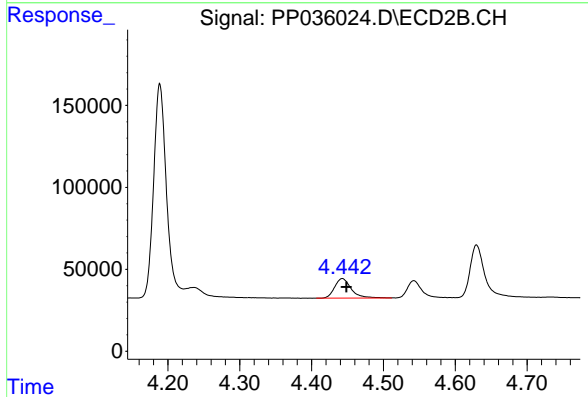
#2 Decachlorobiphenyl
 R.T.: 9.423 min
 Delta R.T.: -0.004 min
 Response: 1074371
 Conc: 54.41 ng/ml



#8 AR-1221-1

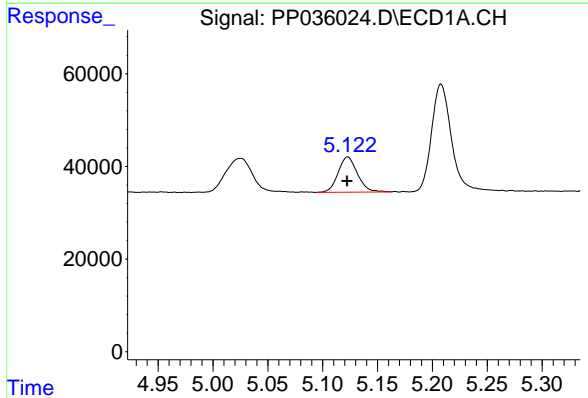
R.T.: 5.025 min
 Delta R.T.: 0.000 min
 Response: 123179
 Conc: 500.81 ng/ml

Instrument :
 ECD_P
 ClientSampleId :
 AR1221CCC500



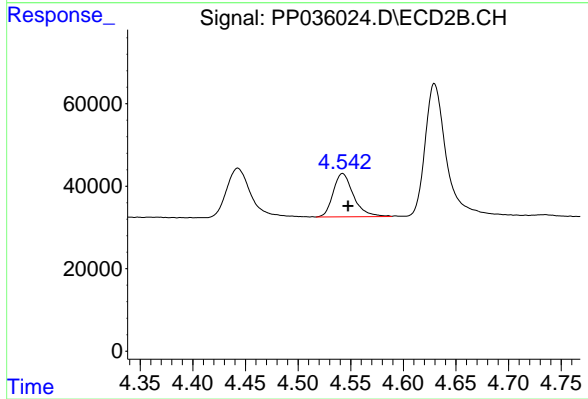
#8 AR-1221-1

R.T.: 4.443 min
 Delta R.T.: -0.006 min
 Response: 190919
 Conc: 547.01 ng/ml



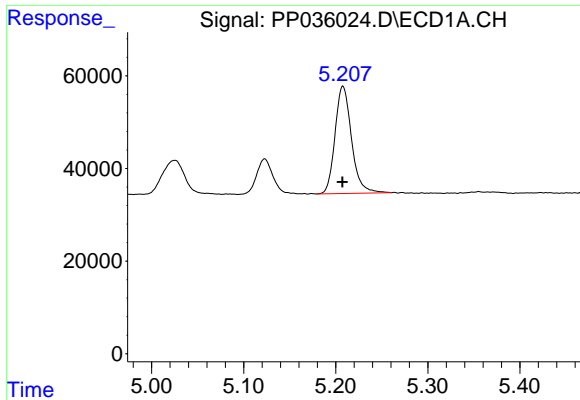
#9 AR-1221-2

R.T.: 5.123 min
 Delta R.T.: 0.000 min
 Response: 93208
 Conc: 512.61 ng/ml



#9 AR-1221-2

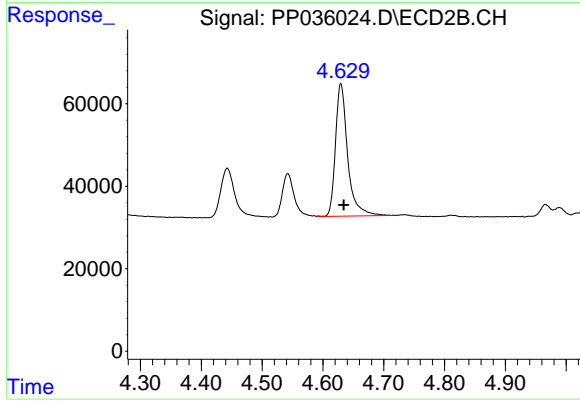
R.T.: 4.542 min
 Delta R.T.: -0.005 min
 Response: 141296
 Conc: 531.31 ng/ml



#10 AR-1221-3

R.T.: 5.208 min
Delta R.T.: 0.000 min
Response: 287996
Conc: 510.76 ng/ml

Instrument :
ECD_P
ClientSampleId :
AR1221CCC500



#10 AR-1221-3

R.T.: 4.629 min
Delta R.T.: -0.005 min
Response: 447675
Conc: 528.90 ng/ml