

Data Path : Z:\pestpcbsrv\HPCHEM1\ECD\_P\Data\PP051821\  
 Data File : PP036026.D  
 Signal(s) : Signal #1: ECD1A.CH Signal #2: ECD2B.CH  
 Acq On : 18 May 2021 15:35  
 Operator : DD\AJ  
 Sample : AR1242CCC500  
 Misc :  
 ALS Vial : 6 Sample Multiplier: 1

Instrument :  
 ECD\_P  
 ClientSampleId :  
 AR1242CCC500

Integration File signal 1: autoint1.e  
 Integration File signal 2: autoint2.e  
 Quant Time: May 18 18:05:53 2021  
 Quant Method : Z:\pestpcbsrv\HPCHEM1\ECD\_P\methods\PP051821.M  
 Quant Title : GC EXTRACTABLES  
 QLast Update : Tue May 18 06:25:23 2021  
 Response via : Initial Calibration  
 Integrator: ChemStation 6890 Scale Mode: Small noise peaks clipped

Volume Inj. : 2 µl  
 Signal #1 Phase : ZB-MR1 Signal #2 Phase: ZB-MR2  
 Signal #1 Info : 30Mx0.32mmx 0.50µ Signal #2 Info : 30M x 0.32mm x 0.25µm

Compound	RT#1	RT#2	Resp#1	Resp#2	ng/ml	ng/ml
-----						
System Monitoring Compounds						
1) SA Tetrachlo...	4.775	4.190	1026467	1547125	47.519	48.402
2) SA Decachlor...	10.602	9.421	697321	1030785	51.518	52.203
Target Compounds						
16) L4 AR-1242-1	6.076	5.430	255850	332795	542.626	643.211
17) L4 AR-1242-2	6.101	5.450	389942	635604	511.913	510.428
18) L4 AR-1242-3	6.165	5.641	251267	293566	514.911	561.277
19) L4 AR-1242-4	6.271	5.730	208403	294144	524.649	495.151
20) L4 AR-1242-5	7.045	6.289	204700	353541	528.021	518.508
-----						

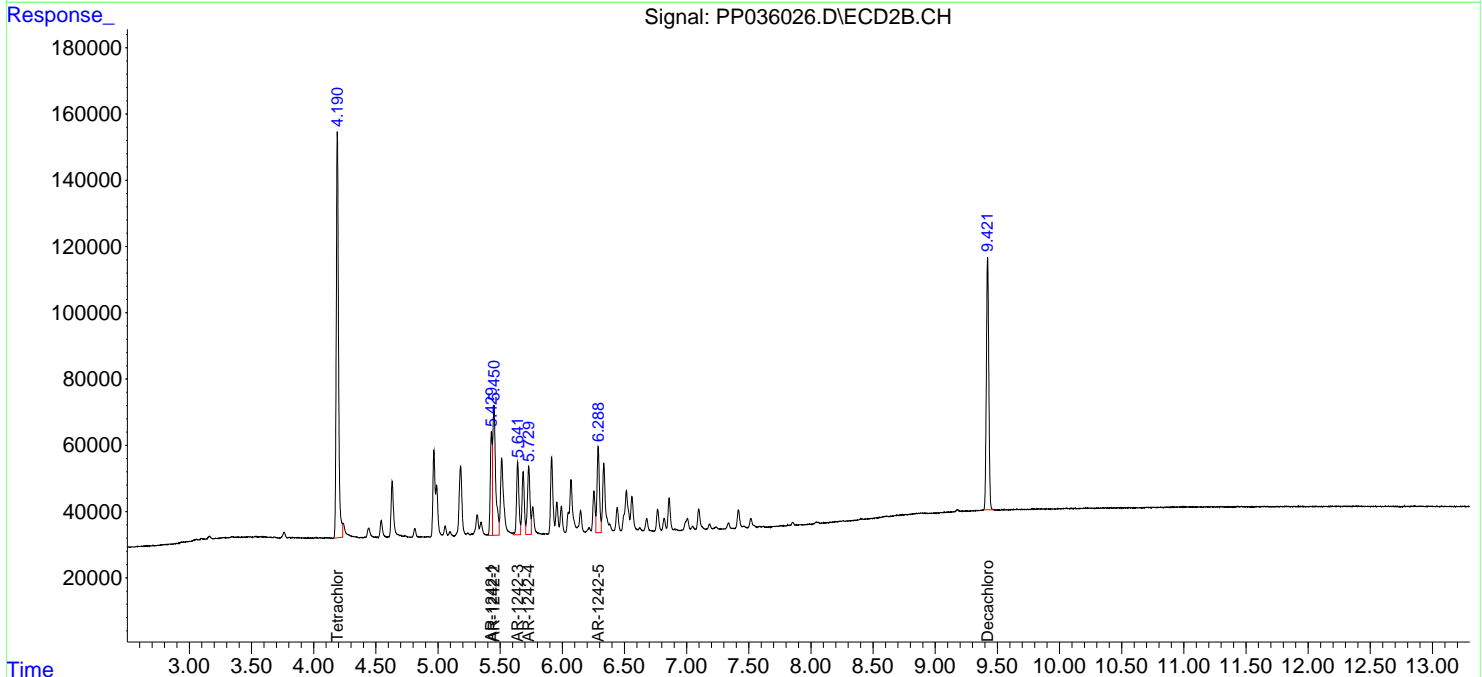
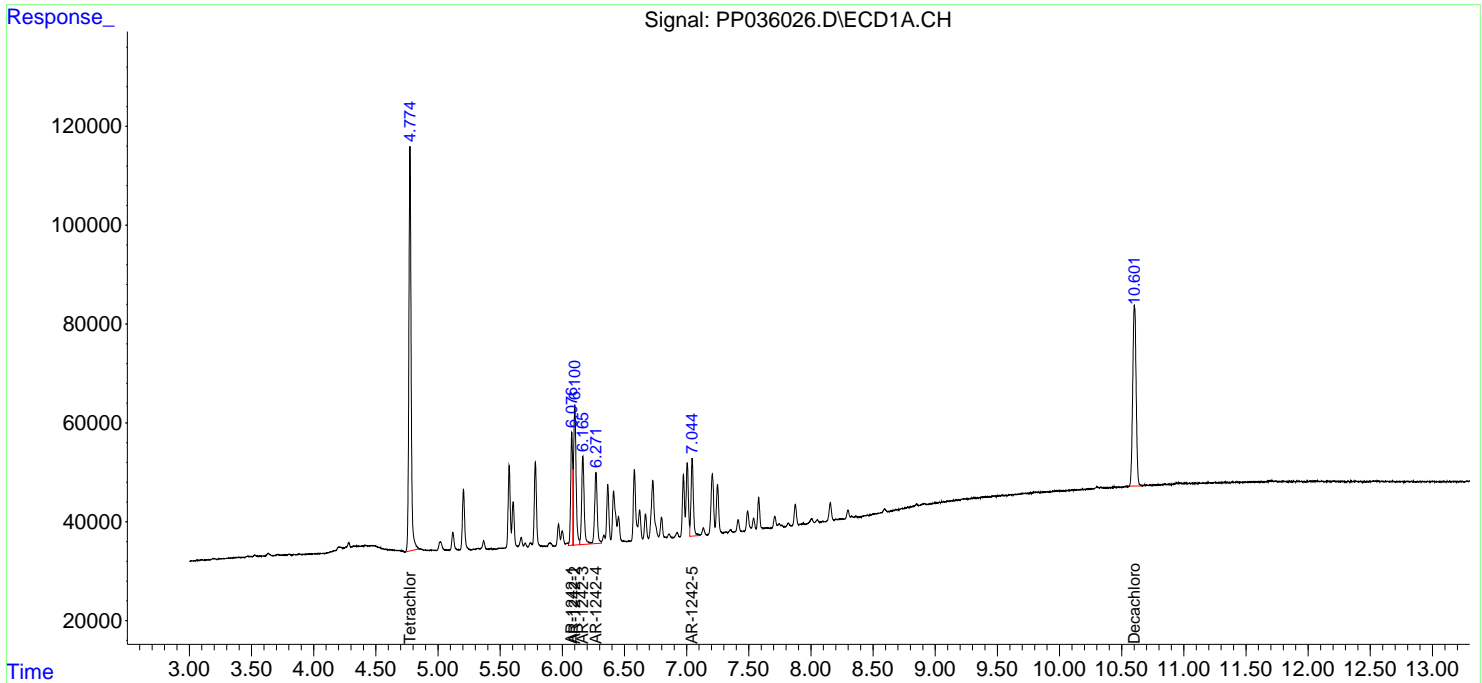
(f)=RT Delta > 1/2 Window (#)=Amounts differ by > 25% (m)=manual int.

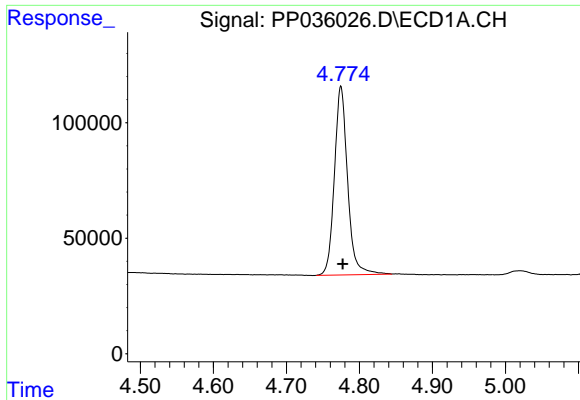
Data Path : Z:\pestpcbsrv\HPCHEM1\ECD\_P\Data\PP051821\  
 Data File : PP036026.D  
 Signal(s) : Signal #1: ECD1A.CH Signal #2: ECD2B.CH  
 Acq On : 18 May 2021 15:35  
 Operator : DD\AJ  
 Sample : AR1242CCC500  
 Misc :  
 ALS Vial : 6 Sample Multiplier: 1

Instrument :  
 ECD\_P  
 ClientSampled :  
 AR1242CCC500

Integration File signal 1: autoint1.e  
 Integration File signal 2: autoint2.e  
 Quant Time: May 18 18:05:53 2021  
 Quant Method : Z:\pestpcbsrv\HPCHEM1\ECD\_P\methods\PP051821.M  
 Quant Title : GC EXTRACTABLES  
 QLast Update : Tue May 18 06:25:23 2021  
 Response via : Initial Calibration  
 Integrator: ChemStation 6890 Scale Mode: Small noise peaks clipped

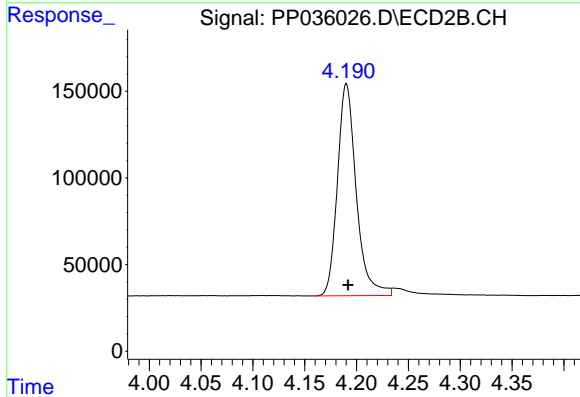
Volume Inj. : 2 µl  
 Signal #1 Phase : ZB-MR1 Signal #2 Phase: ZB-MR2  
 Signal #1 Info : 30Mx0.32mmx 0.50µ Signal #2 Info : 30M x 0.32mm x 0.25µm



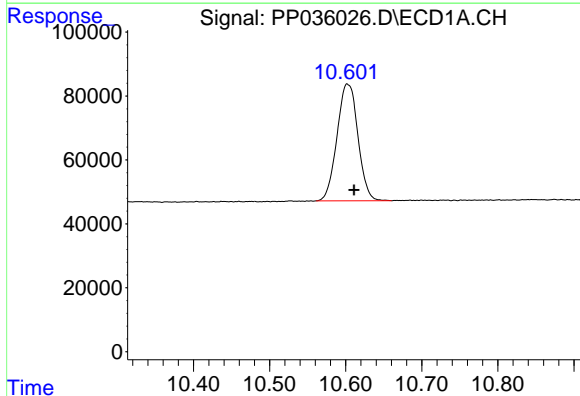


#1 Tetrachloro-m-xylene  
 R.T.: 4.775 min  
 Delta R.T.: -0.002 min  
 Response: 1026467  
 Conc: 47.52 ng/ml

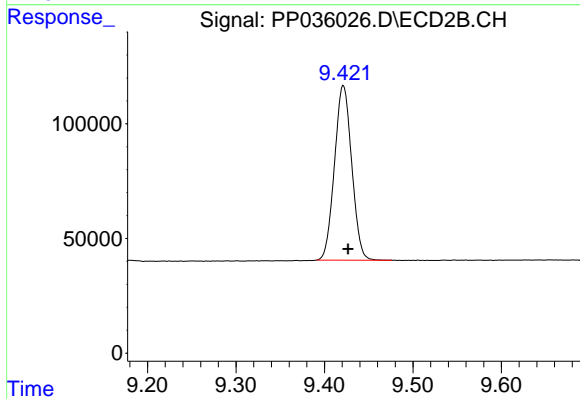
Instrument :  
 ECD\_P  
 ClientSampleId :  
 AR1242CCC500



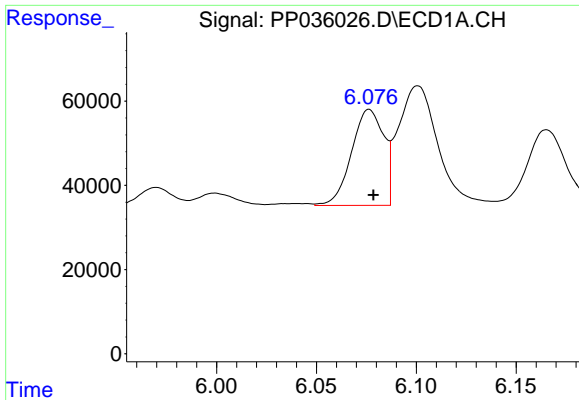
#1 Tetrachloro-m-xylene  
 R.T.: 4.190 min  
 Delta R.T.: -0.002 min  
 Response: 1547125  
 Conc: 48.40 ng/ml



#2 Decachlorobiphenyl  
 R.T.: 10.602 min  
 Delta R.T.: -0.009 min  
 Response: 697321  
 Conc: 51.52 ng/ml

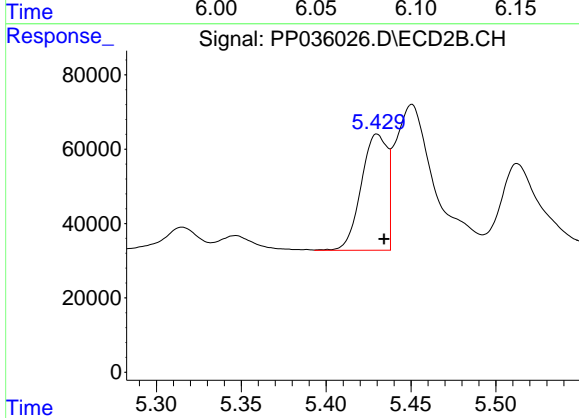


#2 Decachlorobiphenyl  
 R.T.: 9.421 min  
 Delta R.T.: -0.005 min  
 Response: 1030785  
 Conc: 52.20 ng/ml

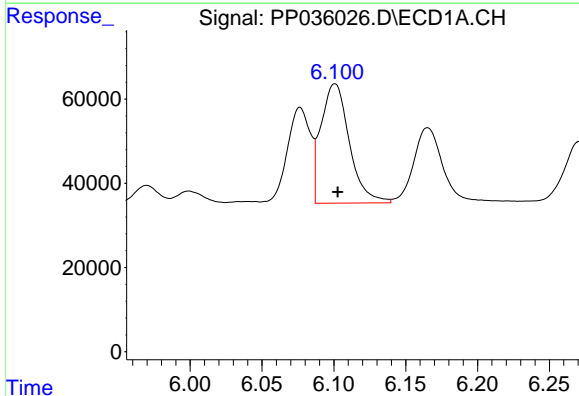


#16 AR-1242-1  
 R.T.: 6.076 min  
 Delta R.T.: -0.002 min  
 Response: 255850  
 Conc: 542.63 ng/ml

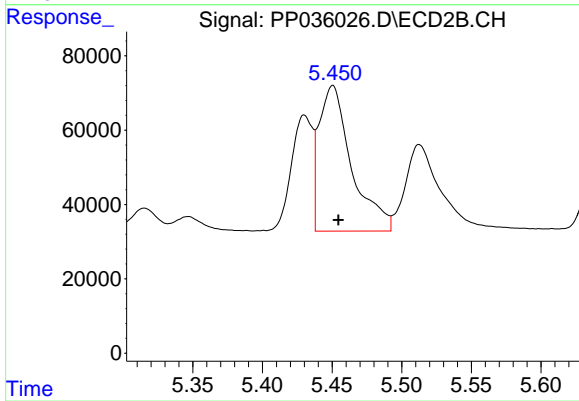
**Instrument :**  
 ECD\_P  
**ClientSampleId :**  
 AR1242CCC500



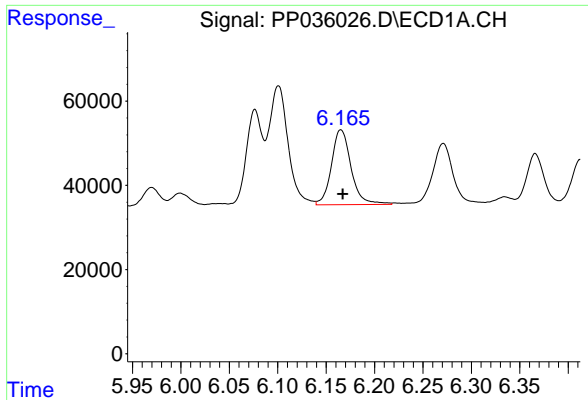
#16 AR-1242-1  
 R.T.: 5.430 min  
 Delta R.T.: -0.004 min  
 Response: 332795  
 Conc: 643.21 ng/ml



#17 AR-1242-2  
 R.T.: 6.101 min  
 Delta R.T.: -0.002 min  
 Response: 389942  
 Conc: 511.91 ng/ml



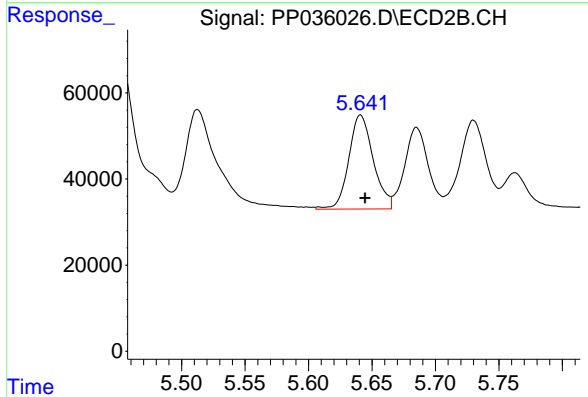
#17 AR-1242-2  
 R.T.: 5.450 min  
 Delta R.T.: -0.004 min  
 Response: 635604  
 Conc: 510.43 ng/ml



#18 AR-1242-3

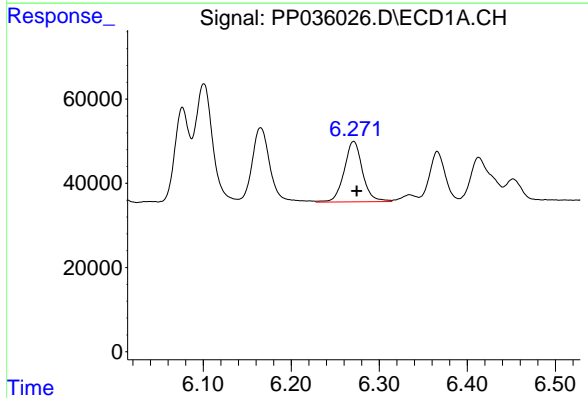
R.T.: 6.165 min  
 Delta R.T.: -0.002 min  
 Response: 251267  
 Conc: 514.91 ng/ml

Instrument :  
 ECD\_P  
 ClientSampleId :  
 AR1242CCC500



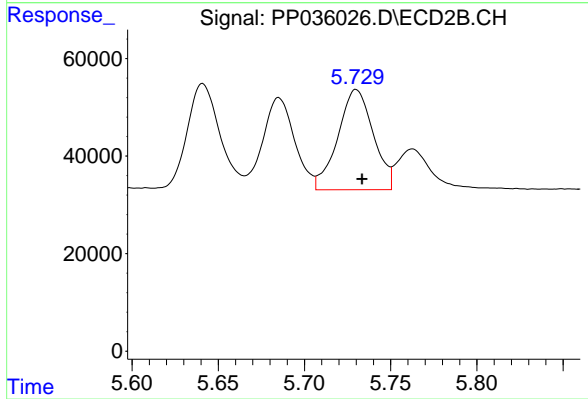
#18 AR-1242-3

R.T.: 5.641 min  
 Delta R.T.: -0.004 min  
 Response: 293566  
 Conc: 561.28 ng/ml



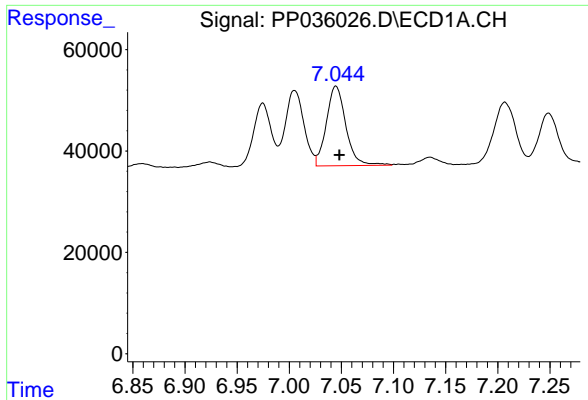
#19 AR-1242-4

R.T.: 6.271 min  
 Delta R.T.: -0.003 min  
 Response: 208403  
 Conc: 524.65 ng/ml



#19 AR-1242-4

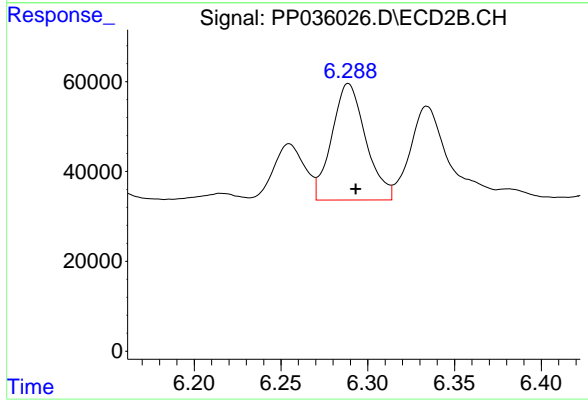
R.T.: 5.730 min  
 Delta R.T.: -0.003 min  
 Response: 294144  
 Conc: 495.15 ng/ml



#20 AR-1242-5

R.T.: 7.045 min  
Delta R.T.: -0.003 min  
Response: 204700  
Conc: 528.02 ng/ml

Instrument :  
ECD\_P  
ClientSampleId :  
AR1242CCC500



#20 AR-1242-5

R.T.: 6.289 min  
Delta R.T.: -0.004 min  
Response: 353541  
Conc: 518.51 ng/ml