

Data Path : Z:\pestpcbsrv\HPCHEM1\ECD_P\Data\PP051922\
 Data File : PP047781.D
 Signal(s) : Signal #1: ECD1A.ch Signal #2: ECD2B.ch
 Acq On : 19 May 2022 15:41
 Operator : YP\AJ
 Sample : I.BLK
 Misc :
 ALS Vial : 2 Sample Multiplier: 1

Instrument :
 ECD_P
 ClientSampleId :
 I.BLK

Integration File signal 1: autoint1.e
 Integration File signal 2: autoint2.e
 Quant Time: May 19 17:39:36 2022
 Quant Method : Z:\pestpcbsrv\HPCHEM1\ECD_P\methods\PP051022.M
 Quant Title : GC EXTRACTABLES
 QLast Update : Thu May 19 15:06:39 2022
 Response via : Initial Calibration
 Integrator: ChemStation

Volume Inj. : 2 µl
 Signal #1 Phase : ZB-MR1 Signal #2 Phase: ZB-MR2
 Signal #1 Info : 30Mx0.32mmx 0.50µ Signal #2 Info : 30M x 0.32mm x 0.25µm

Compound	RT#1	RT#2	Resp#1	Resp#2	ng/ml	ng/ml

System Monitoring Compounds						
1) SA Tetrachlo...	3.846	3.109	51401975	66042190	20.218	20.058
2) SA Decachlor...	9.901	8.408	32289781	60152838	22.571	22.099

Target Compounds

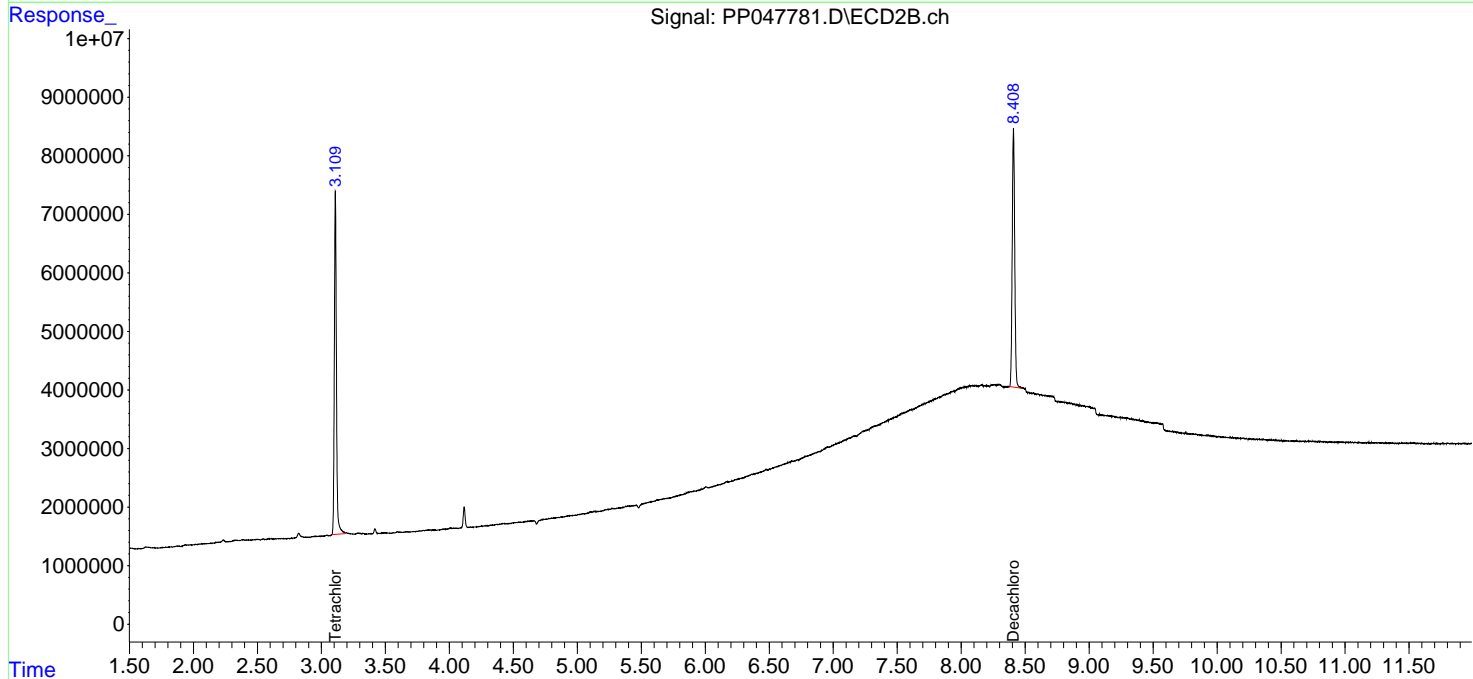
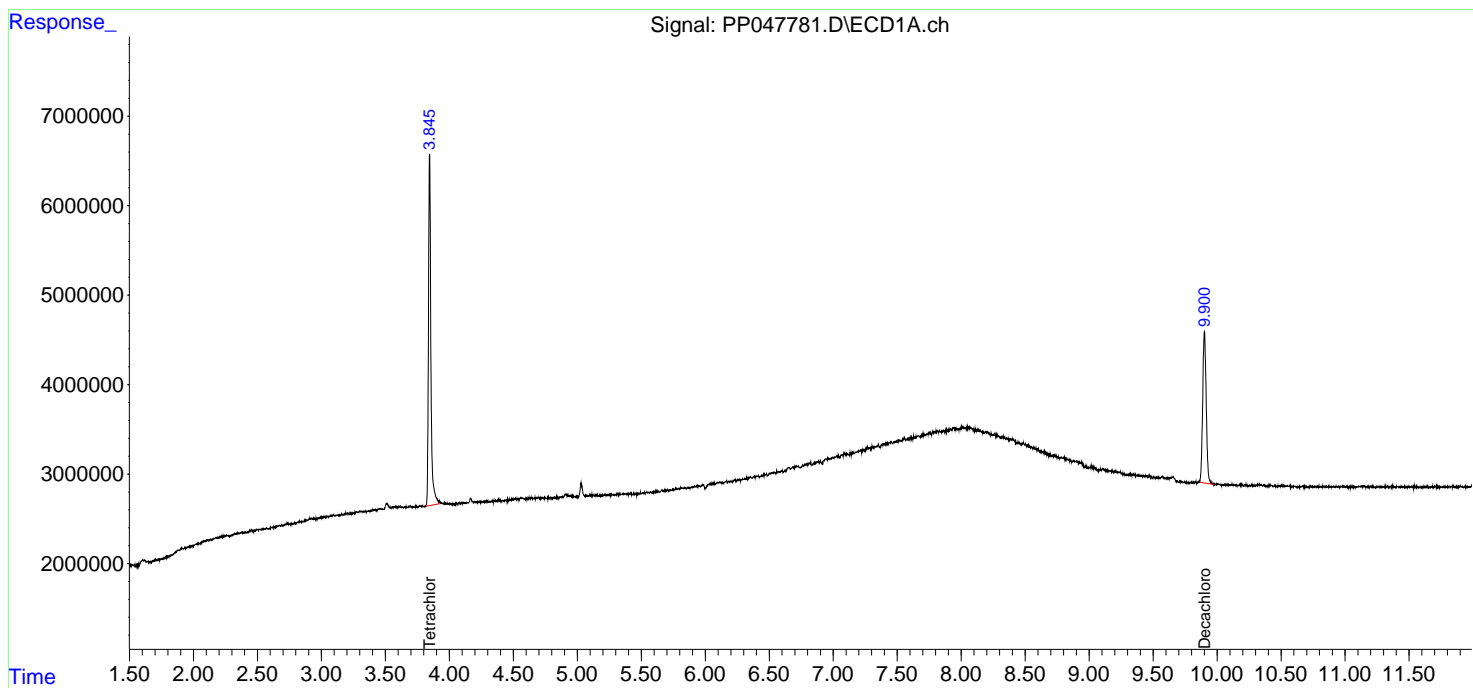
(f)=RT Delta > 1/2 Window (#)=Amounts differ by > 25% (m)=manual int.

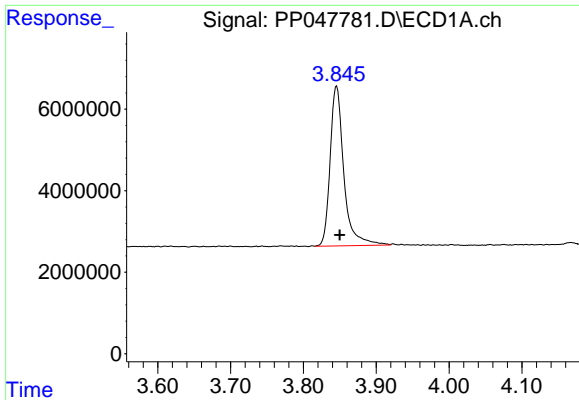
Data Path : Z:\pestpcbsrv\HPCHEM1\ECD_P\Data\PP051922\
 Data File : PP047781.D
 Signal(s) : Signal #1: ECD1A.ch Signal #2: ECD2B.ch
 Acq On : 19 May 2022 15:41
 Operator : YP\AJ
 Sample : I.BLK
 Misc :
 ALS Vial : 2 Sample Multiplier: 1

Instrument :
 ECD_P
 ClientSampleId :
 I.BLK

Integration File signal 1: autoint1.e
 Integration File signal 2: autoint2.e
 Quant Time: May 19 17:39:36 2022
 Quant Method : Z:\pestpcbsrv\HPCHEM1\ECD_P\methods\PP051022.M
 Quant Title : GC EXTRACTABLES
 QLast Update : Thu May 19 15:06:39 2022
 Response via : Initial Calibration
 Integrator: ChemStation

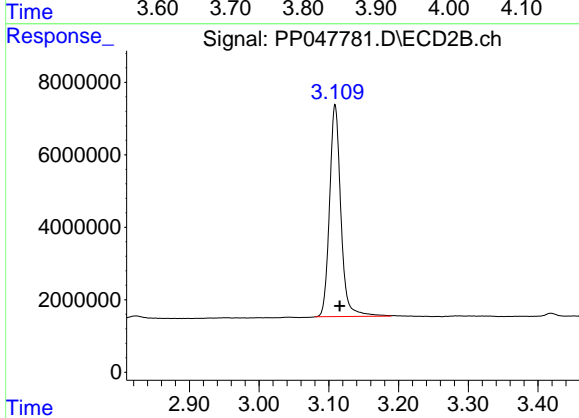
Volume Inj. : 2 µl
 Signal #1 Phase : ZB-MR1 Signal #2 Phase: ZB-MR2
 Signal #1 Info : 30Mx0.32mmx 0.50µ Signal #2 Info : 30M x 0.32mm x 0.25µm



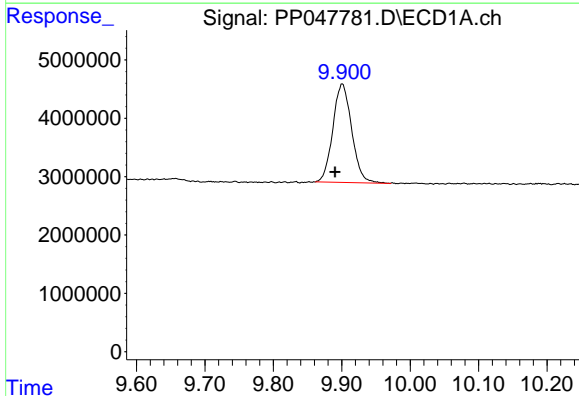


#1 Tetrachloro-m-xylene
 R.T.: 3.846 min
 Delta R.T.: -0.004 min
 Response: 51401975
 Conc: 20.22 ng/ml

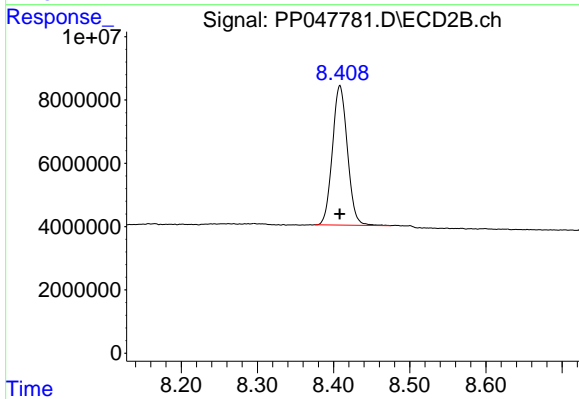
Instrument :
 ECD_P
 ClientSampleId :
 I.BLK



#1 Tetrachloro-m-xylene
 R.T.: 3.109 min
 Delta R.T.: -0.007 min
 Response: 66042190
 Conc: 20.06 ng/ml



#2 Decachlorobiphenyl
 R.T.: 9.901 min
 Delta R.T.: 0.011 min
 Response: 32289781
 Conc: 22.57 ng/ml



#2 Decachlorobiphenyl
 R.T.: 8.408 min
 Delta R.T.: 0.000 min
 Response: 60152838
 Conc: 22.10 ng/ml