

Data Path : Z:\pestpcbsrv\HPCHEM1\ECD_P\Data\PP051925\
 Data File : PP072172.D
 Signal(s) : Signal #1: ECD1A.ch Signal #2: ECD2B.ch
 Acq On : 19 May 2025 11:54
 Operator : YP\AJ
 Sample : AR1232ICC500
 Misc :
 ALS Vial : 11 Sample Multiplier: 1

Instrument :
 ECD_P
ClientSampleId :
 AR1232ICC500

Integration File signal 1: autoint1.e
 Integration File signal 2: autoint2.e
 Quant Time: May 19 12:07:32 2025
 Quant Method : Z:\pestpcbsrv\HPCHEM1\ECD_P\methods\PP051925.M
 Quant Title : GC EXTRACTABLES
 QLast Update : Mon May 19 12:05:24 2025
 Response via : Initial Calibration
 Integrator: ChemStation

Volume Inj. : 2 µl
 Signal #1 Phase : ZB-MR1 Signal #2 Phase: ZB-MR2
 Signal #1 Info : 30Mx0.32mmx 0.50µ Signal #2 Info : 30M x 0.32mm x 0.25µm

Compound	RT#1	RT#2	Resp#1	Resp#2	ng/ml	ng/ml

System Monitoring Compounds						
1) SA Tetrachlo...	4.501	3.795	102.7E6	84298957	50.000	50.000
2) SA Decachlor...	10.214	8.823	83645074	56024151	50.000	50.000
Target Compounds						
11) L3 AR-1232-1	4.864	4.168	24001461	22645075	500.000	500.000
12) L3 AR-1232-2	5.390	4.897	11622194	22266011	500.000	500.000
13) L3 AR-1232-3	5.676	5.075	25922328	11904276	500.000	500.000
14) L3 AR-1232-4	5.836	5.159	12402195	10340360	500.000	500.000
15) L3 AR-1232-5	5.926	5.331	8221206	11267225	500.000	500.000

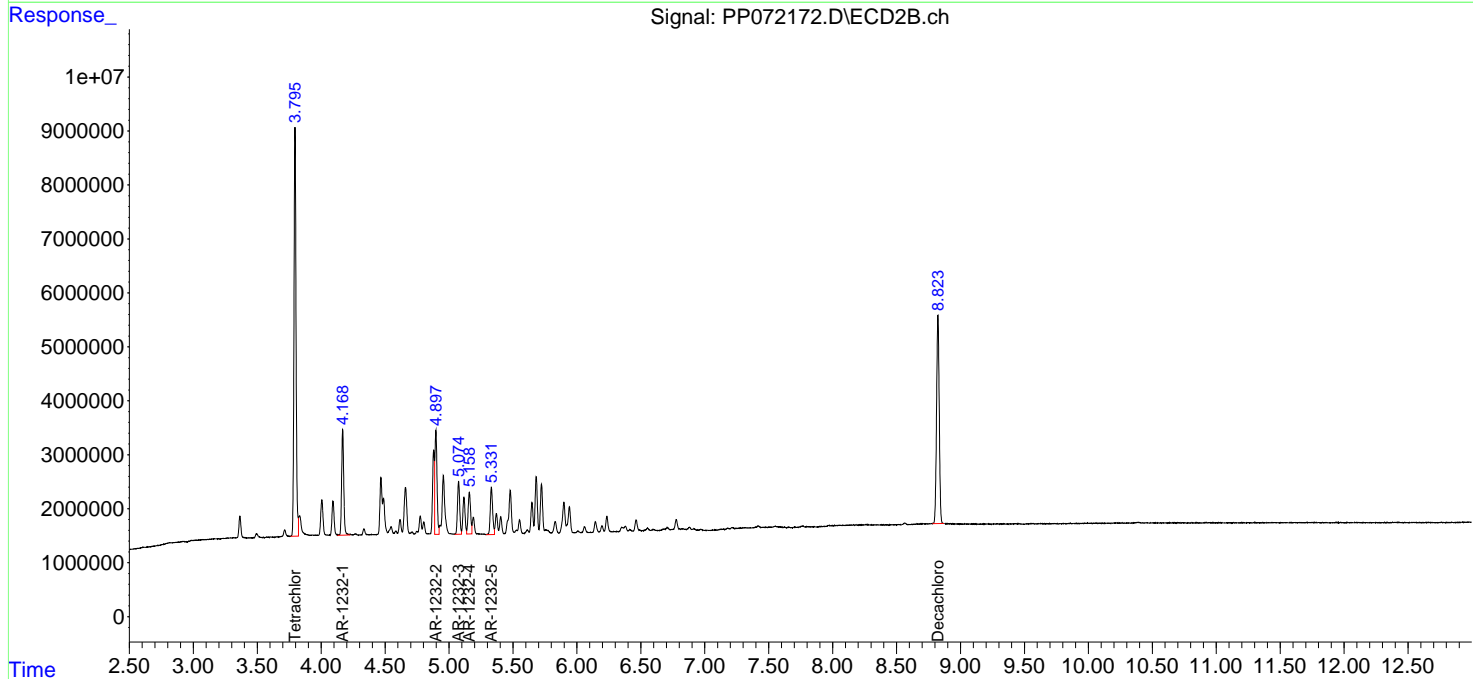
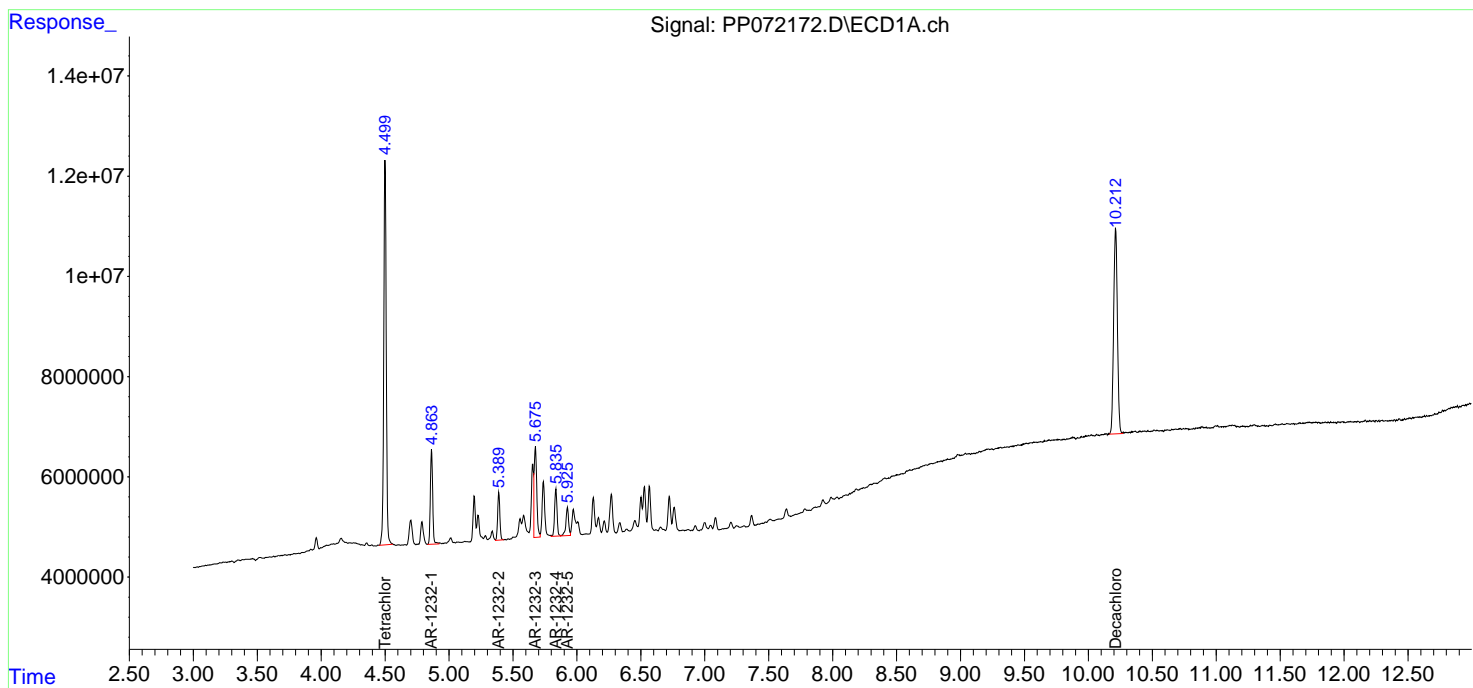
(f)=RT Delta > 1/2 Window (#)=Amounts differ by > 25% (m)=manual int.

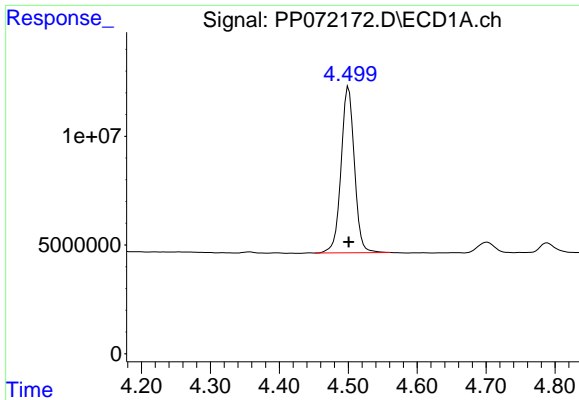
Data Path : Z:\pestpcbsrv\HPCHEM1\ECD_P\Data\PP051925\
 Data File : PP072172.D
 Signal(s) : Signal #1: ECD1A.ch Signal #2: ECD2B.ch
 Acq On : 19 May 2025 11:54
 Operator : YP\AJ
 Sample : AR1232ICC500
 Misc :
 ALS Vial : 11 Sample Multiplier: 1

Instrument :
 ECD_P
 ClientSampleId :
 AR1232ICC500

Integration File signal 1: autoint1.e
 Integration File signal 2: autoint2.e
 Quant Time: May 19 12:07:32 2025
 Quant Method : Z:\pestpcbsrv\HPCHEM1\ECD_P\methods\PP051925.M
 Quant Title : GC EXTRACTABLES
 QLast Update : Mon May 19 12:05:24 2025
 Response via : Initial Calibration
 Integrator: ChemStation

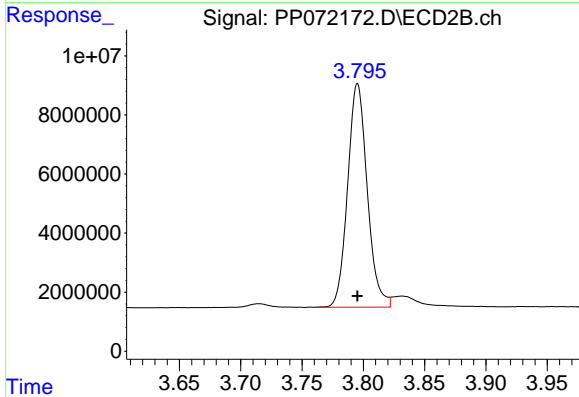
Volume Inj. : 2 µl
 Signal #1 Phase : ZB-MR1 Signal #2 Phase: ZB-MR2
 Signal #1 Info : 30Mx0.32mmx 0.50µ Signal #2 Info : 30M x 0.32mm x 0.25µm



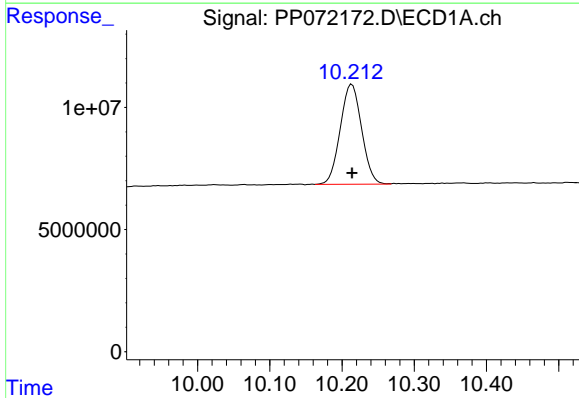


#1 Tetrachloro-m-xylene
 R.T.: 4.501 min
 Delta R.T.: 0.000 min
 Response: 102732092
 Conc: 50.00 ng/ml

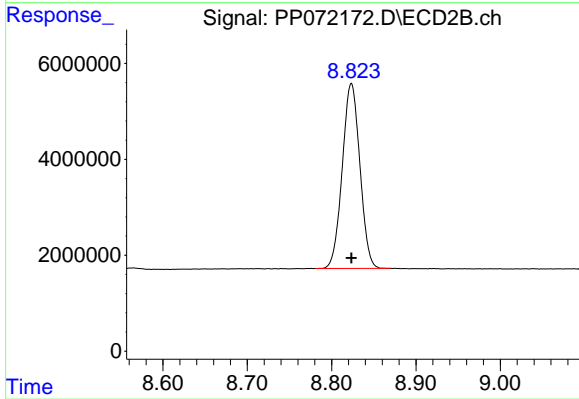
Instrument :
 ECD_P
 ClientSampleId :
 AR1232ICC500



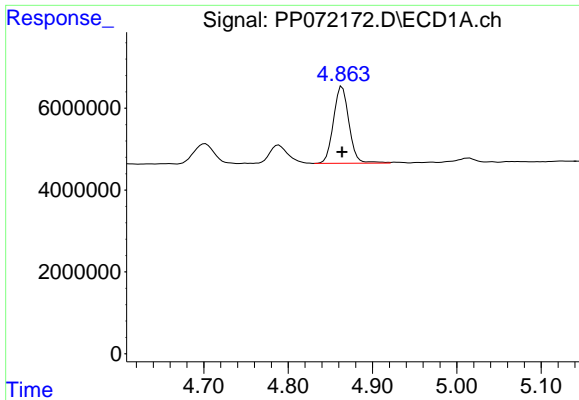
#1 Tetrachloro-m-xylene
 R.T.: 3.795 min
 Delta R.T.: 0.000 min
 Response: 84298957
 Conc: 50.00 ng/ml



#2 Decachlorobiphenyl
 R.T.: 10.214 min
 Delta R.T.: 0.000 min
 Response: 83645074
 Conc: 50.00 ng/ml



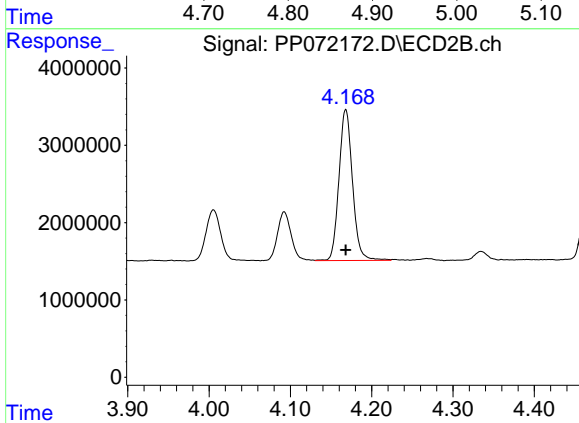
#2 Decachlorobiphenyl
 R.T.: 8.823 min
 Delta R.T.: 0.000 min
 Response: 56024151
 Conc: 50.00 ng/ml



#11 AR-1232-1

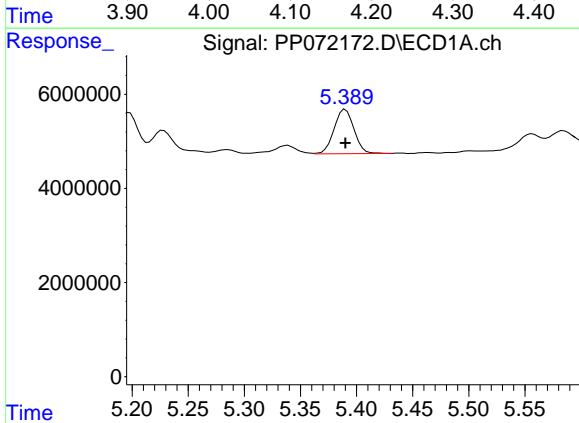
R.T.: 4.864 min
 Delta R.T.: 0.000 min
 Response: 24001461
 Conc: 500.00 ng/ml

Instrument :
 ECD_P
 ClientSampleId :
 AR1232ICC500



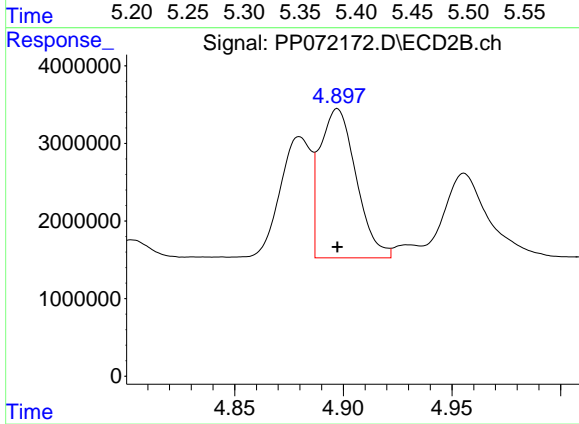
#11 AR-1232-1

R.T.: 4.168 min
 Delta R.T.: 0.000 min
 Response: 22645075
 Conc: 500.00 ng/ml



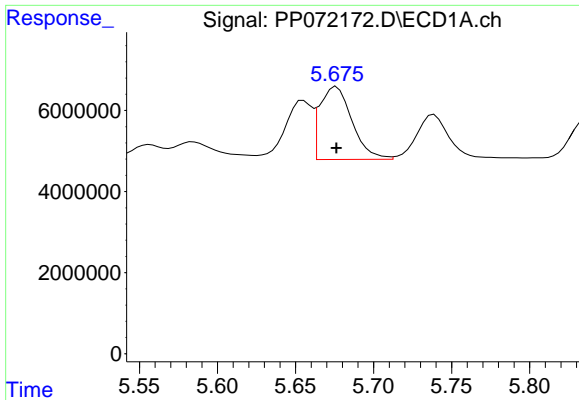
#12 AR-1232-2

R.T.: 5.390 min
 Delta R.T.: 0.000 min
 Response: 11622194
 Conc: 500.00 ng/ml



#12 AR-1232-2

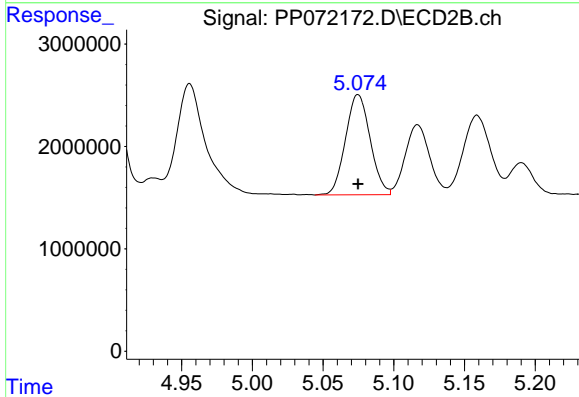
R.T.: 4.897 min
 Delta R.T.: 0.000 min
 Response: 22266011
 Conc: 500.00 ng/ml



#13 AR-1232-3

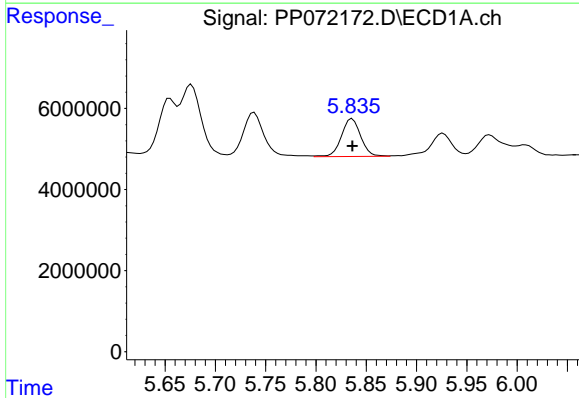
R.T.: 5.676 min
 Delta R.T.: 0.000 min
 Response: 25922328
 Conc: 500.00 ng/ml

Instrument :
 ECD_P
 ClientSampleId :
 AR1232ICC500



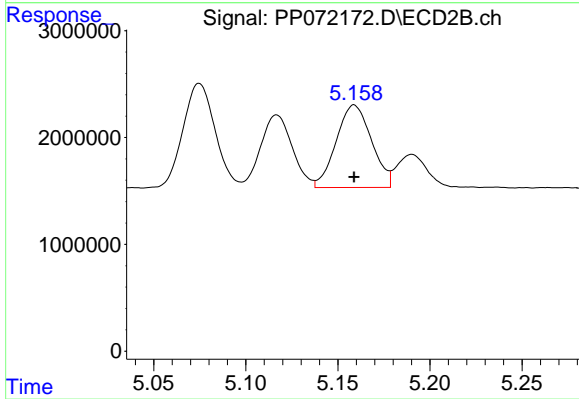
#13 AR-1232-3

R.T.: 5.075 min
 Delta R.T.: 0.000 min
 Response: 11904276
 Conc: 500.00 ng/ml



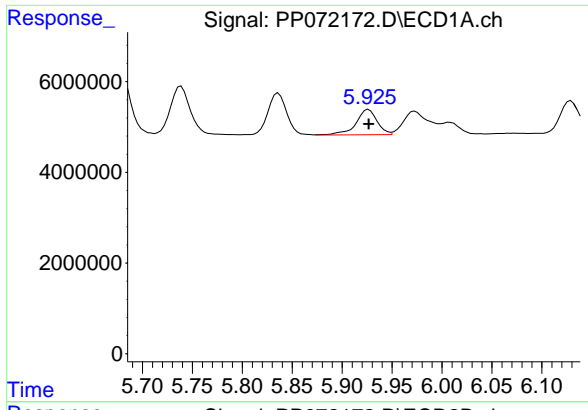
#14 AR-1232-4

R.T.: 5.836 min
 Delta R.T.: 0.000 min
 Response: 12402195
 Conc: 500.00 ng/ml



#14 AR-1232-4

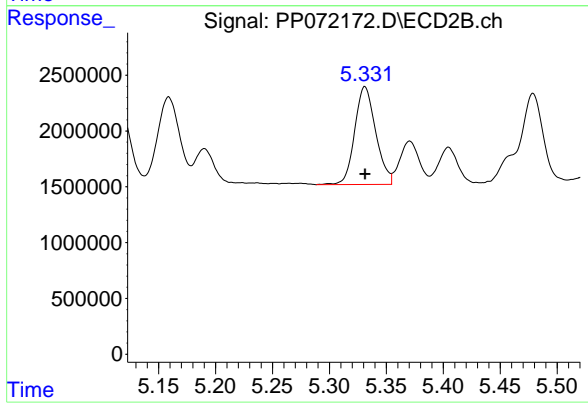
R.T.: 5.159 min
 Delta R.T.: 0.000 min
 Response: 10340360
 Conc: 500.00 ng/ml



#15 AR-1232-5

R.T.: 5.926 min
Delta R.T.: 0.000 min
Response: 8221206
Conc: 500.00 ng/ml

Instrument :
ECD_P
ClientSampleId :
AR1232ICC500



#15 AR-1232-5

R.T.: 5.331 min
Delta R.T.: 0.000 min
Response: 11267225
Conc: 500.00 ng/ml