

Data Path : Z:\pestpcbsrv\HPCHEM1\ECD_P\Data\PP052022\
 Data File : PP047805.D
 Signal(s) : Signal #1: ECD1A.ch Signal #2: ECD2B.ch
 Acq On : 20 May 2022 10:56
 Operator : YP\AJ
 Sample : N2884-01
 Misc :
 ALS Vial : 32 Sample Multiplier: 1

Instrument :
 ECD_P
 ClientSampleId :

Integration File signal 1: autoint1.e
 Integration File signal 2: autoint2.e
 Quant Time: May 20 13:08:00 2022
 Quant Method : Z:\pestpcbsrv\HPCHEM1\ECD_P\methods\PP051022.M
 Quant Title : GC EXTRACTABLES
 QLast Update : Fri May 20 08:48:19 2022
 Response via : Initial Calibration
 Integrator: ChemStation

Volume Inj. : 2 µl
 Signal #1 Phase : ZB-MR1 Signal #2 Phase: ZB-MR2
 Signal #1 Info : 30Mx0.32mmx 0.50µ Signal #2 Info : 30M x 0.32mm x 0.25µm

Compound	RT#1	RT#2	Resp#1	Resp#2	ng/ml	ng/ml
System Monitoring Compounds						
1) SA Tetrachlo...	3.841	3.111	36628944	46968589	14.408	14.265
2) SA Decachlor...	9.926	8.439f	24447819	40070026	17.090	14.721
Target Compounds						
3) L1 AR-1016-1	5.089	4.238	17361061	1260685	235.653	10.804 #
4) L1 AR-1016-2	5.144f	4.284f	447878	8206715	4.012	47.345 #
5) L1 AR-1016-3	5.165f	4.443	2008732	4736023	29.287	52.346 #
6) L1 AR-1016-4	5.282	4.488	16033722	275244	274.448	3.769 #
7) L1 AR-1016-5	5.617	4.701f	849729	7038066	15.569	74.903 #
8) L2 AR-1221-1	4.060	0.000	46560704	0	90482.400	N.D. #
9) L2 AR-1221-2	4.171	3.420	7735682	7713341	1903.915	1143.811 #
10) L2 AR-1221-3	4.265	3.496	2491258	2470419	968.755	900.109
11) L3 AR-1232-1	4.265	3.496	2491258	2470419	968.755	900.109
12) L3 AR-1232-2	4.793	4.284f	3009835	8206715	851.768	1518.861 #
13) L3 AR-1232-3	5.144f	4.443	447878	4736023	121.116	1383.152 #
14) L3 AR-1232-4	5.282	4.531	16033722	9873568	5345.255	3443.331 #
15) L3 AR-1232-5	5.414f	4.701f	7072980	7038066	2146.593	1773.546
16) L4 AR-1242-1	5.089	4.238	17361061	1260685	7357.562	361.117 #
17) L4 AR-1242-2	5.144f	4.284f	447878	8206715	121.116	1518.861 #
18) L4 AR-1242-3	5.165f	4.443	2008732	4736023	626.926	1383.152 #
19) L4 AR-1242-4	5.282	4.531	16033722	9873568	5345.255	3443.331 #
20) L4 AR-1242-5	6.069f	5.105f	15256451	13781132	6626.442	558.280 #
21) L5 AR-1248-1	5.089	4.238	17361061	1260685	7357.562	361.117 #
22) L5 AR-1248-2	5.414f	4.488	7072980	275244	2146.593	67.945 #
23) L5 AR-1248-3	5.617	4.531	849729	9873568	374.373	3443.331 #
24) L5 AR-1248-4	6.027f	4.701f	1065415	7038066	664.179	1773.546 #
25) L5 AR-1248-5	6.069f	5.137	15256451	5490134	6626.442	1859.032 #
26) L6 AR-1254-1	6.019	5.105f	4261066	13781132	331.291	558.280 #
27) L6 AR-1254-2	0.000	5.251	0	698590	N.D.	26.182 #
28) L6 AR-1254-3	6.640	5.688	4129493	2286671	744.301	20.836 #
29) L6 AR-1254-4	6.937f	5.943f	-141978	26965104	N.D.	4903.997 #
30) L6 AR-1254-5	7.419	6.389f	3716752	19583294	42.529	147.693 #
31) L7 AR-1260-1	6.823	5.799f	4392101	10015276	48.552	58.791
32) L7 AR-1260-2	7.129f	6.034	568185	24190308	4.894	99.731 #
33) L7 AR-1260-3	7.501	6.184	2147664	2427447	20.838	12.147 #
34) L7 AR-1260-4	7.768f	6.703	14804070	2381786	153.201	13.480 #
35) L7 AR-1260-5	8.085	6.972	4544265	5107104	25.404	10.857 #
36) L8 AR-1262-1	7.501	6.425	2147664	5637818	14.110	17.330
37) L8 AR-1262-2	8.085	6.703	4544265	2381786	21.305	9.747 #
38) L8 AR-1262-3	8.415	7.244f	1146511	3729654	8.124	17.313 #
39) L8 AR-1262-4	8.516	7.342	4868786	6608489	80.886	18.300 #
40) L8 AR-1262-5	0.000	7.893f	0	12829859	N.D.	74.523 #
41) L9 AR-1268-1	8.415	7.244f	1146511	3729654	8.124	17.313 #

Data Path : Z:\pestpcbsrv\HPCHEM1\ECD_P\Data\PP052022\
 Data File : PP047805.D
 Signal(s) : Signal #1: ECD1A.ch Signal #2: ECD2B.ch
 Acq On : 20 May 2022 10:56
 Operator : YP\AJ
 Sample : N2884-01
 Misc :
 ALS Vial : 32 Sample Multiplier: 1

Instrument :
 ECD_P
 ClientSampleId :

Integration File signal 1: autoint1.e
 Integration File signal 2: autoint2.e
 Quant Time: May 20 13:08:00 2022
 Quant Method : Z:\pestpcbsrv\HPCHEM1\ECD_P\methods\PP051022.M
 Quant Title : GC EXTRACTABLES
 QLast Update : Fri May 20 08:48:19 2022
 Response via : Initial Calibration
 Integrator: ChemStation

Volume Inj. : 2 µl
 Signal #1 Phase : ZB-MR1 Signal #2 Phase: ZB-MR2
 Signal #1 Info : 30Mx0.32mmx 0.50µ Signal #2 Info : 30M x 0.32mm x 0.25µm

	Compound	RT#1	RT#2	Resp#1	Resp#2	ng/ml	ng/ml
42)	L9 AR-1268-2	8.516	7.342	4868786	6608489	43.681	18.300 #
43)	L9 AR-1268-3	8.751	7.529f	7706845	3511226	1160.153	189.304 #
44)	L9 AR-1268-4	0.000	7.893f	0	12829859	N.D.	74.523 #
45)	L9 AR-1268-5	9.580	8.180	863623	6510080	32.300	108.587 #

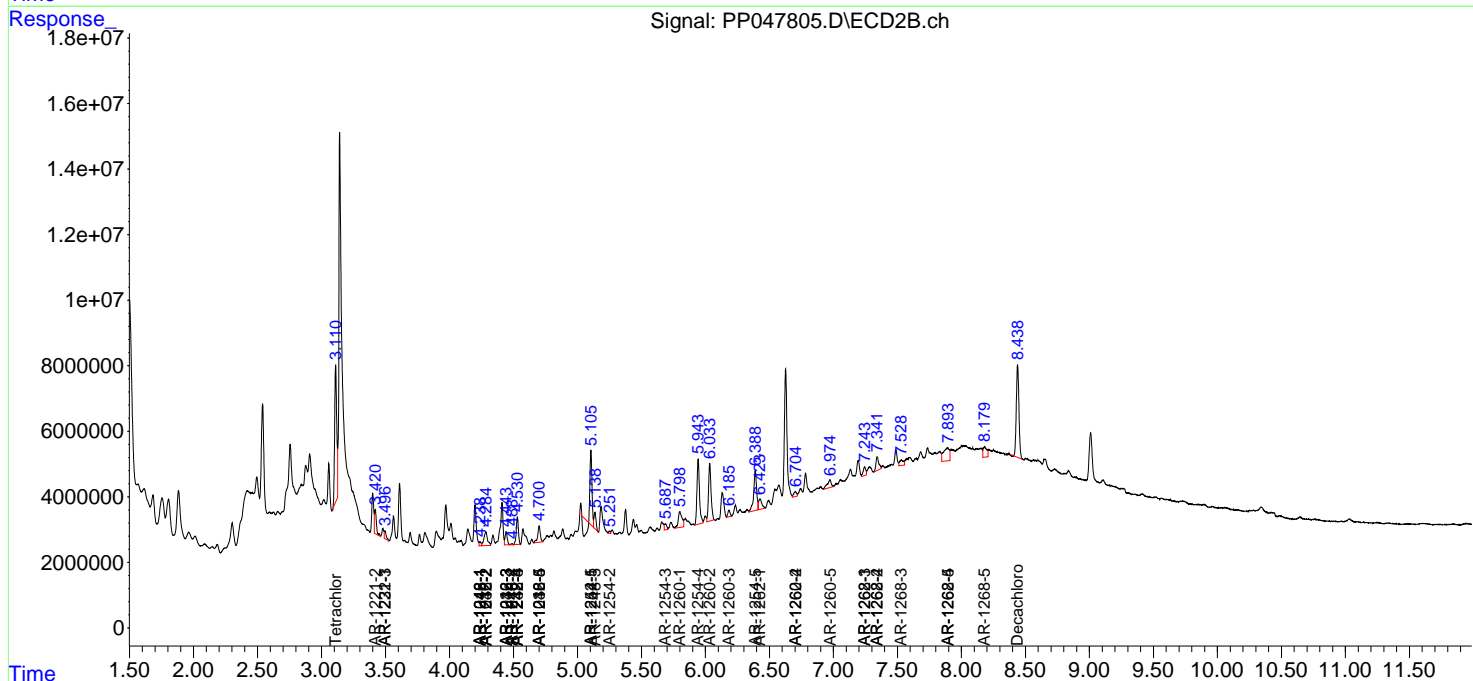
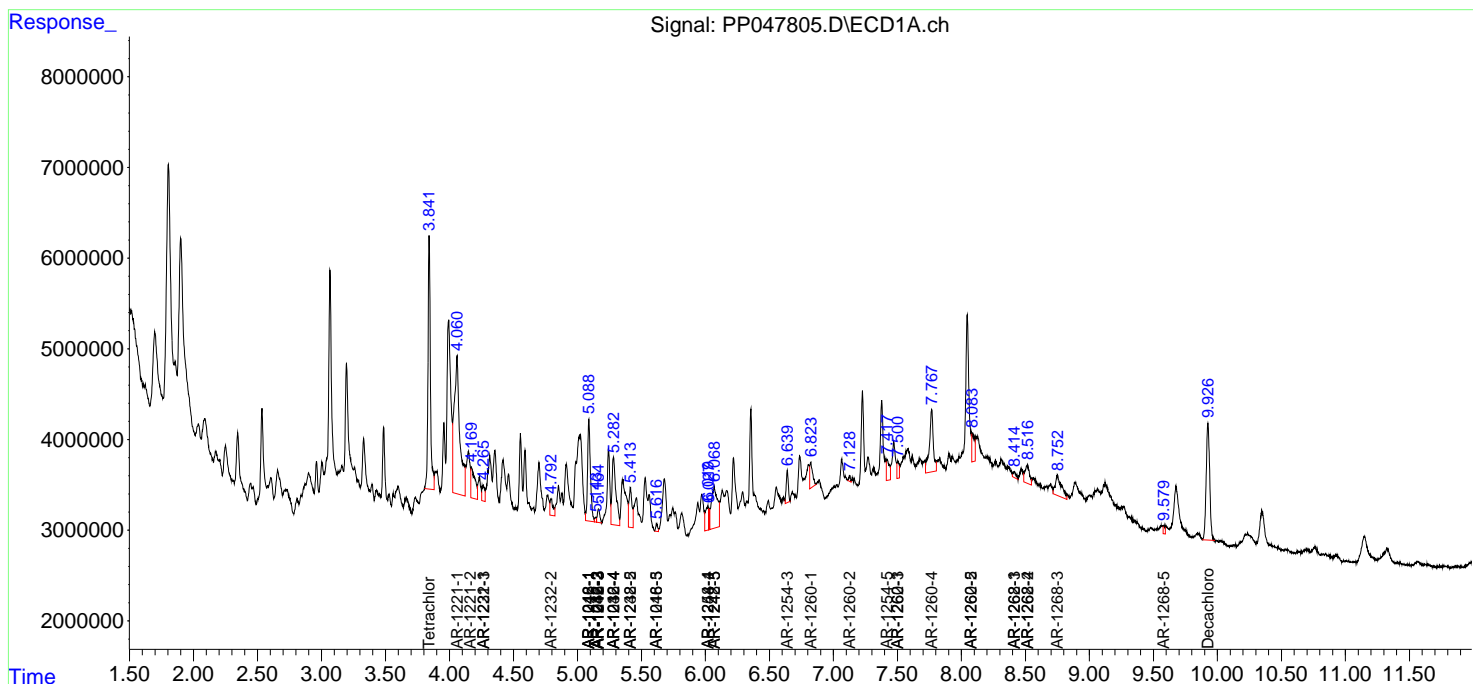
(f)=RT Delta > 1/2 Window (#)=Amounts differ by > 25% (m)=manual int.

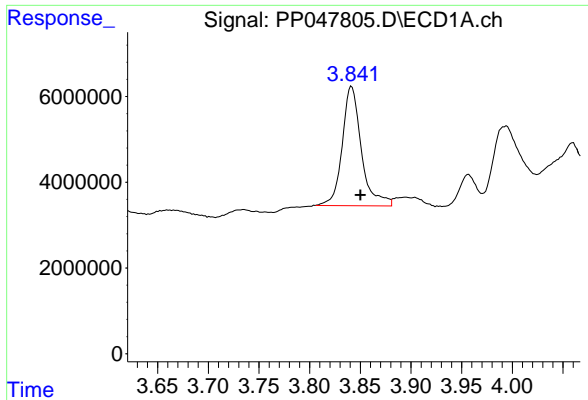
Data Path : Z:\pestpcbsrv\HPCHEM1\ECD_P\Data\PP052022\
 Data File : PP047805.D
 Signal(s) : Signal #1: ECD1A.ch Signal #2: ECD2B.ch
 Acq On : 20 May 2022 10:56
 Operator : YP\AJ
 Sample : N2884-01
 Misc :
 ALS Vial : 32 Sample Multiplier: 1

Instrument :
 ECD_P
 ClientSampleId :

Integration File signal 1: autoint1.e
 Integration File signal 2: autoint2.e
 Quant Time: May 20 13:08:00 2022
 Quant Method : Z:\pestpcbsrv\HPCHEM1\ECD_P\methods\PP051022.M
 Quant Title : GC EXTRACTABLES
 QLast Update : Fri May 20 08:48:19 2022
 Response via : Initial Calibration
 Integrator: ChemStation

Volume Inj. : 2 µl
 Signal #1 Phase : ZB-MR1 Signal #2 Phase: ZB-MR2
 Signal #1 Info : 30Mx0.32mmx 0.50µ Signal #2 Info : 30M x 0.32mm x 0.25µm

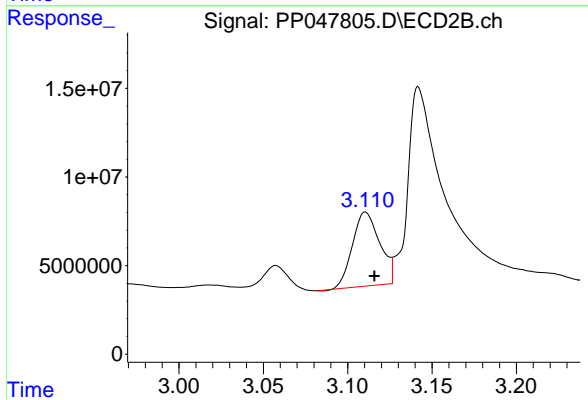




#1 Tetrachloro-m-xylene

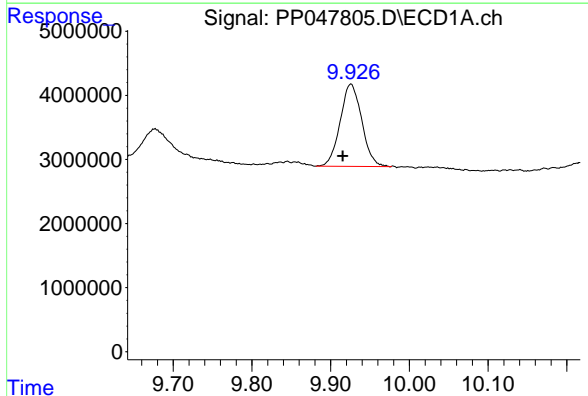
R.T.: 3.841 min
 Delta R.T.: -0.009 min
 Response: 36628944
 Conc: 14.41 ng/ml

Instrument :
 ECD_P
 ClientSampleId :



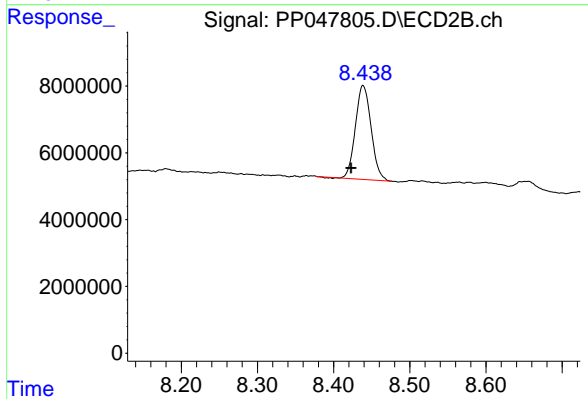
#1 Tetrachloro-m-xylene

R.T.: 3.111 min
 Delta R.T.: -0.005 min
 Response: 46968589
 Conc: 14.27 ng/ml



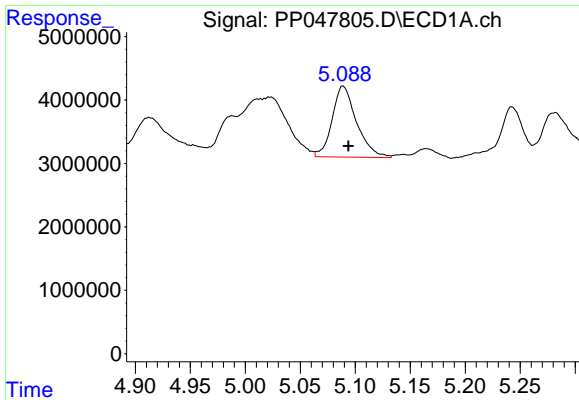
#2 Decachlorobiphenyl

R.T.: 9.926 min
 Delta R.T.: 0.011 min
 Response: 24447819
 Conc: 17.09 ng/ml



#2 Decachlorobiphenyl

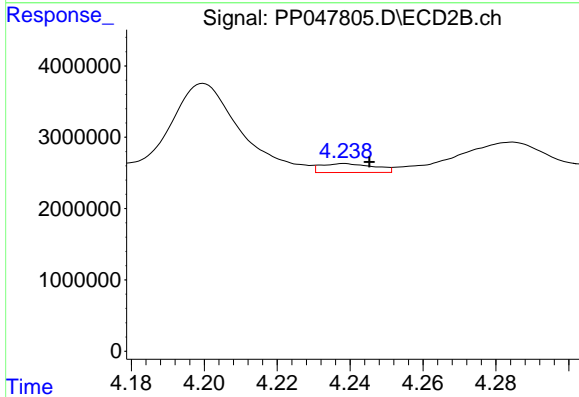
R.T.: 8.439 min
 Delta R.T.: 0.016 min
 Response: 40070026
 Conc: 14.72 ng/ml



#3 AR-1016-1

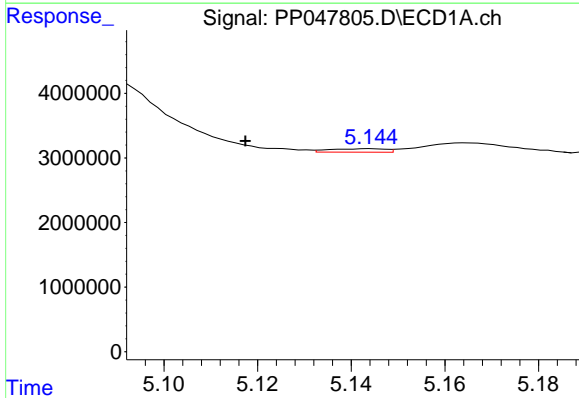
R.T.: 5.089 min
 Delta R.T.: -0.005 min
 Response: 17361061
 Conc: 235.65 ng/ml

Instrument :
 ECD_P
 ClientSampleId :



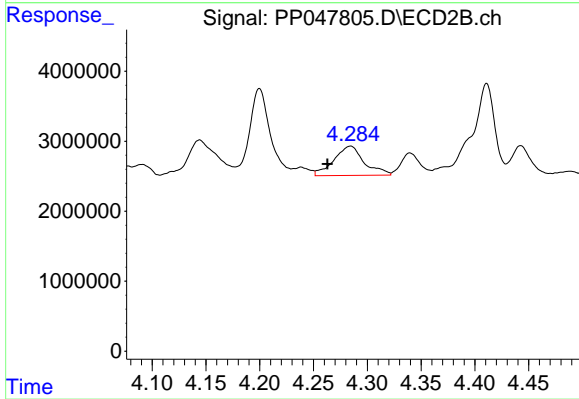
#3 AR-1016-1

R.T.: 4.238 min
 Delta R.T.: -0.007 min
 Response: 1260685
 Conc: 10.80 ng/ml



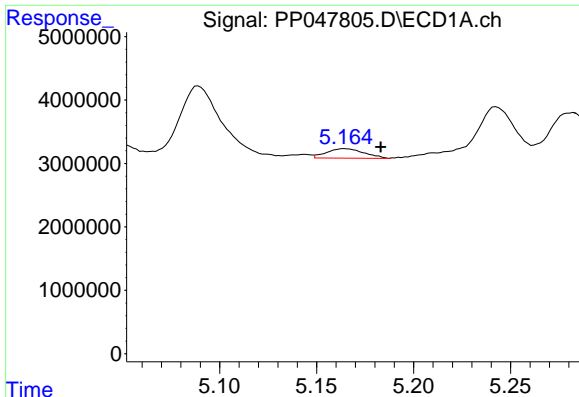
#4 AR-1016-2

R.T.: 5.144 min
 Delta R.T.: 0.027 min
 Response: 447878
 Conc: 4.01 ng/ml



#4 AR-1016-2

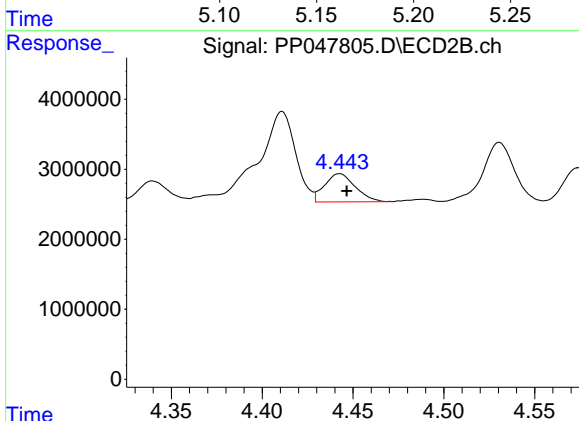
R.T.: 4.284 min
 Delta R.T.: 0.022 min
 Response: 8206715
 Conc: 47.35 ng/ml



#5 AR-1016-3

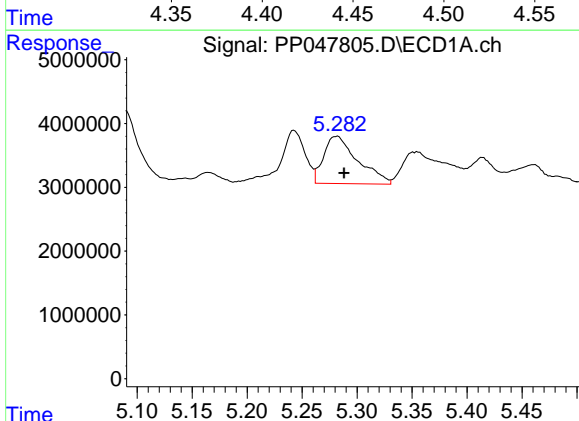
R.T.: 5.165 min
 Delta R.T.: -0.018 min
 Response: 2008732
 Conc: 29.29 ng/ml

Instrument :
 ECD_P
 ClientSampleId :



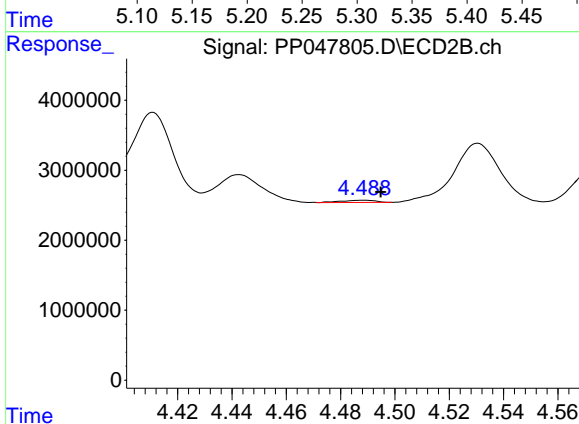
#5 AR-1016-3

R.T.: 4.443 min
 Delta R.T.: -0.004 min
 Response: 4736023
 Conc: 52.35 ng/ml



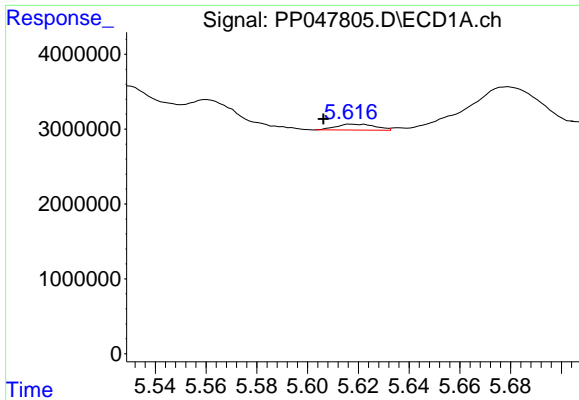
#6 AR-1016-4

R.T.: 5.282 min
 Delta R.T.: -0.006 min
 Response: 16033722
 Conc: 274.45 ng/ml



#6 AR-1016-4

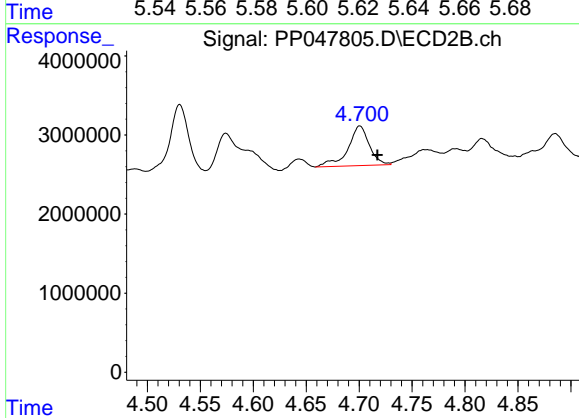
R.T.: 4.488 min
 Delta R.T.: -0.006 min
 Response: 275244
 Conc: 3.77 ng/ml



#7 AR-1016-5

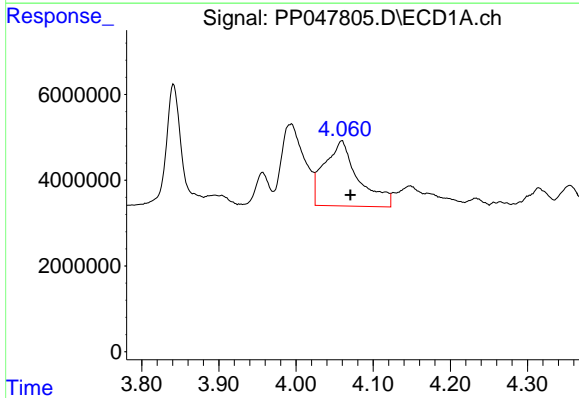
R.T.: 5.617 min
 Delta R.T.: 0.011 min
 Response: 849729
 Conc: 15.57 ng/ml

Instrument :
 ECD_P
 ClientSampleId :



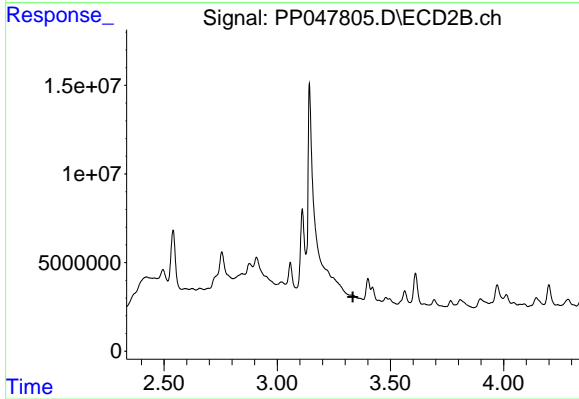
#7 AR-1016-5

R.T.: 4.701 min
 Delta R.T.: -0.017 min
 Response: 7038066
 Conc: 74.90 ng/ml



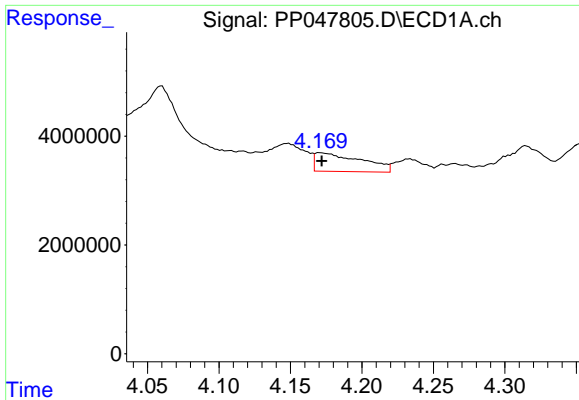
#8 AR-1221-1

R.T.: 4.060 min
 Delta R.T.: -0.011 min
 Response: 46560704
 Conc: 90482.40 ng/ml



#8 AR-1221-1

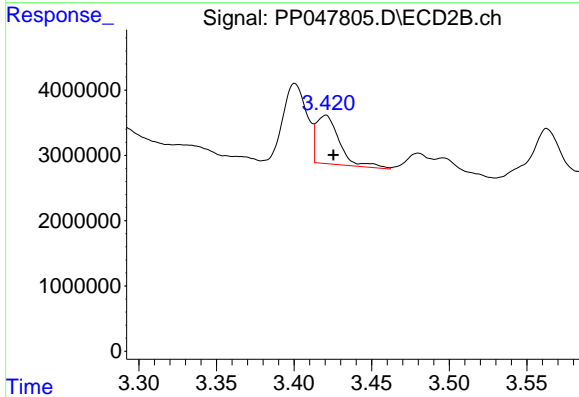
R.T.: 0.000 min
 Exp R.T. : 3.334 min
 Response: 0
 Conc: N.D.



#9 AR-1221-2

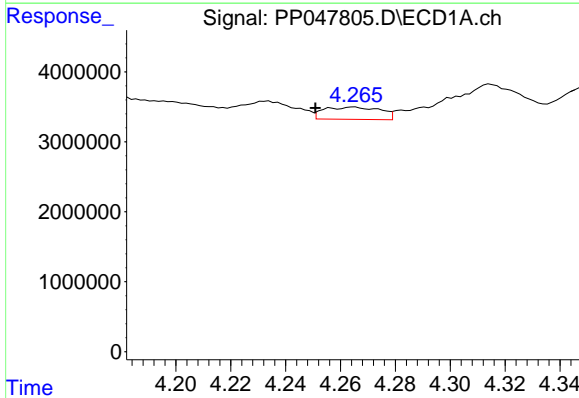
R.T.: 4.171 min
 Delta R.T.: -0.001 min
 Response: 7735682
 Conc: 1903.92 ng/ml

Instrument :
 ECD_P
 ClientSampleId :



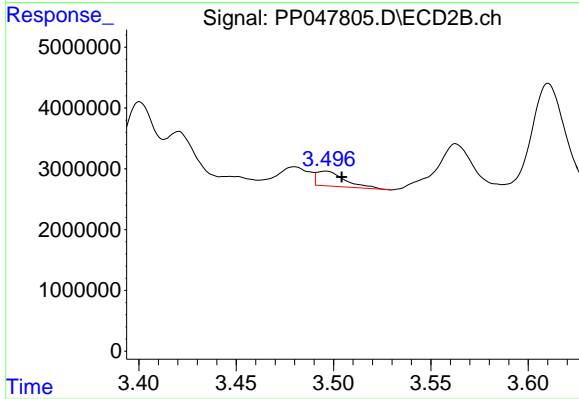
#9 AR-1221-2

R.T.: 3.420 min
 Delta R.T.: -0.005 min
 Response: 7713341
 Conc: 1143.81 ng/ml



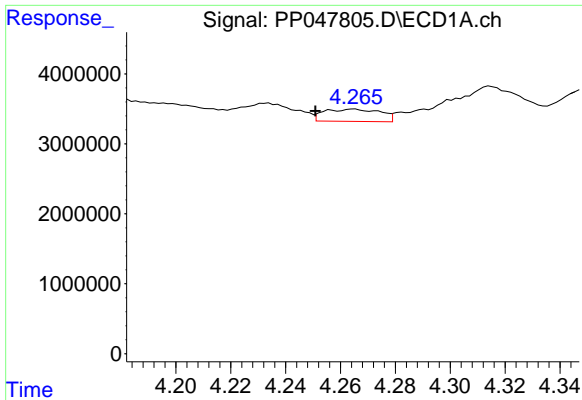
#10 AR-1221-3

R.T.: 4.265 min
 Delta R.T.: 0.014 min
 Response: 2491258
 Conc: 968.76 ng/ml



#10 AR-1221-3

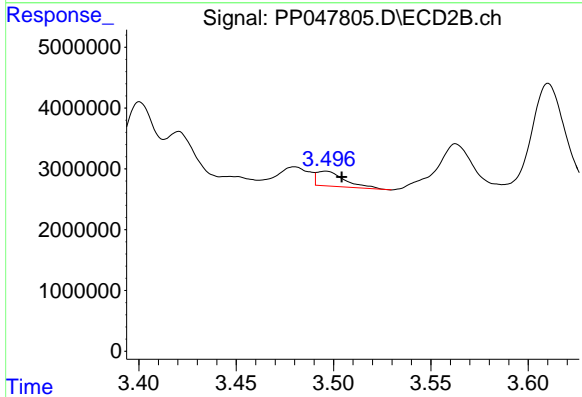
R.T.: 3.496 min
 Delta R.T.: -0.008 min
 Response: 2470419
 Conc: 900.11 ng/ml



#11 AR-1232-1

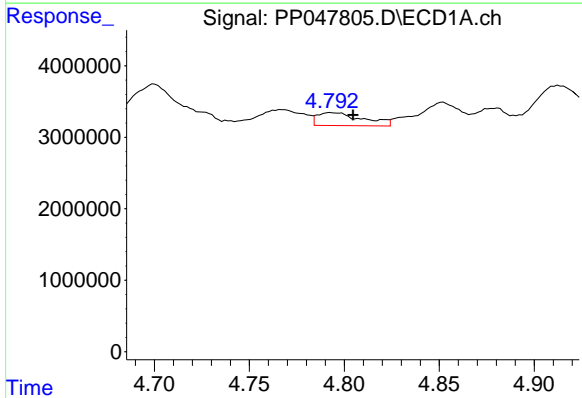
R.T.: 4.265 min
 Delta R.T.: 0.014 min
 Response: 2491258
 Conc: 968.76 ng/ml

Instrument :
 ECD_P
 ClientSampleId :



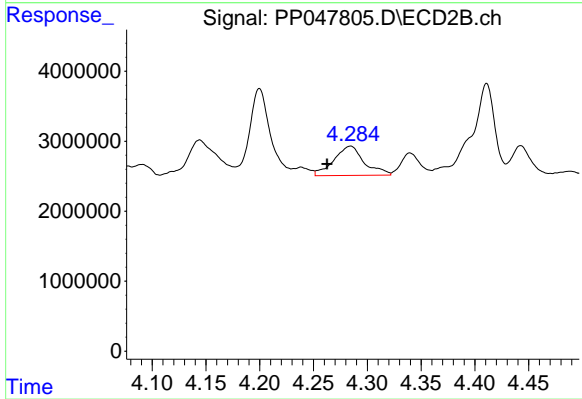
#11 AR-1232-1

R.T.: 3.496 min
 Delta R.T.: -0.008 min
 Response: 2470419
 Conc: 900.11 ng/ml



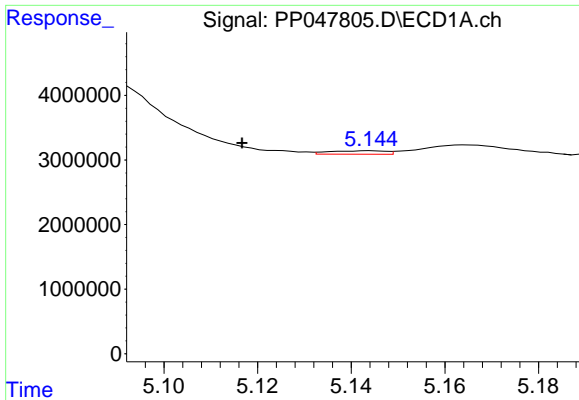
#12 AR-1232-2

R.T.: 4.793 min
 Delta R.T.: -0.012 min
 Response: 3009835
 Conc: 851.77 ng/ml



#12 AR-1232-2

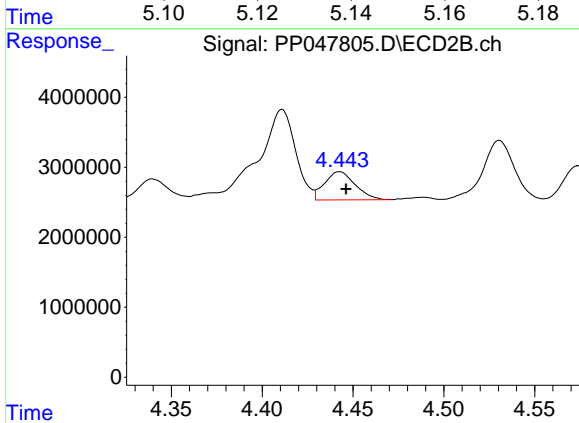
R.T.: 4.284 min
 Delta R.T.: 0.022 min
 Response: 8206715
 Conc: 1518.86 ng/ml



#13 AR-1232-3

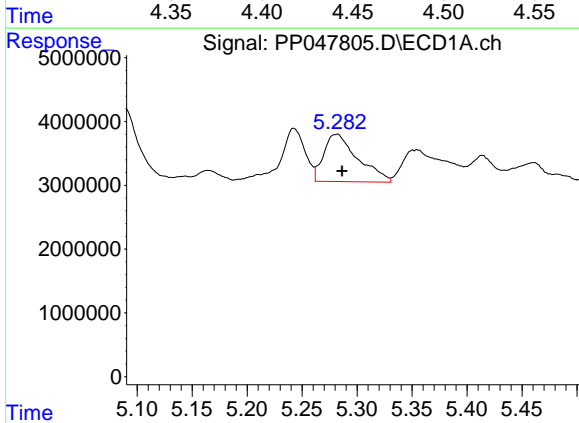
R.T.: 5.144 min
 Delta R.T.: 0.027 min
 Response: 447878
 Conc: 121.12 ng/ml

Instrument :
 ECD_P
 ClientSampleId :



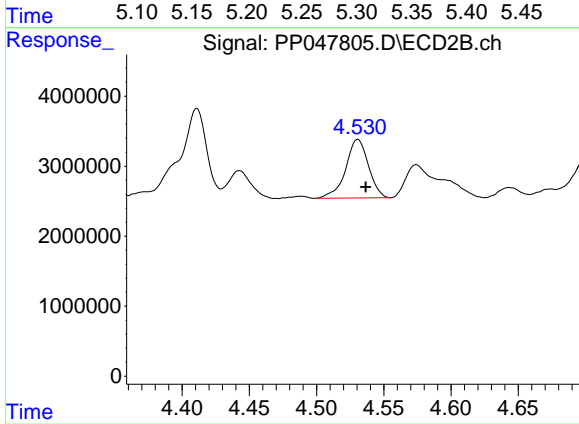
#13 AR-1232-3

R.T.: 4.443 min
 Delta R.T.: -0.004 min
 Response: 4736023
 Conc: 1383.15 ng/ml



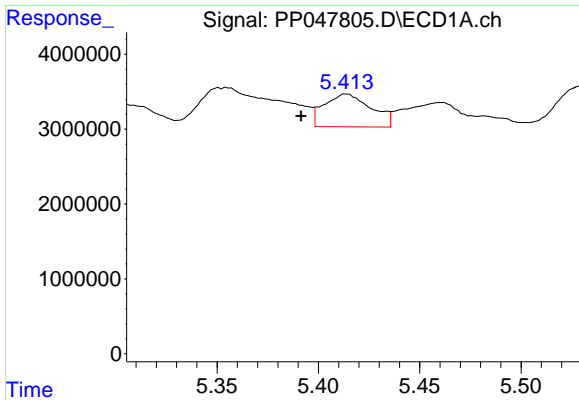
#14 AR-1232-4

R.T.: 5.282 min
 Delta R.T.: -0.004 min
 Response: 16033722
 Conc: 5345.25 ng/ml



#14 AR-1232-4

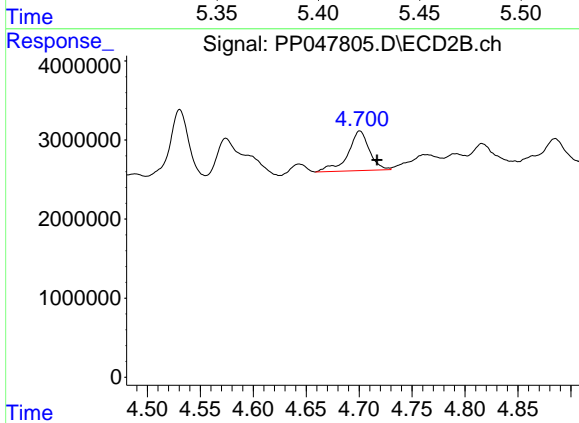
R.T.: 4.531 min
 Delta R.T.: -0.006 min
 Response: 9873568
 Conc: 3443.33 ng/ml



#15 AR-1232-5

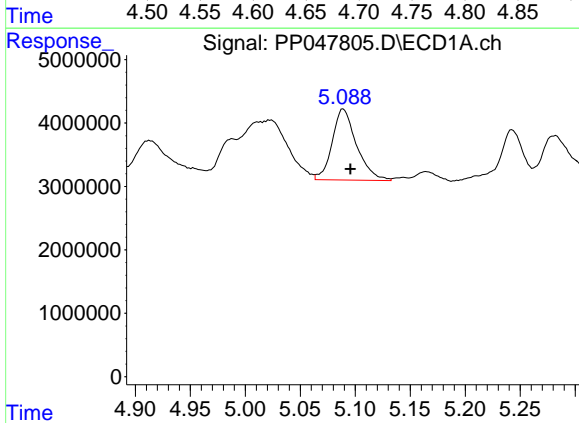
R.T.: 5.414 min
 Delta R.T.: 0.023 min
 Response: 7072980
 Conc: 2146.59 ng/ml

Instrument :
 ECD_P
 ClientSampleId :



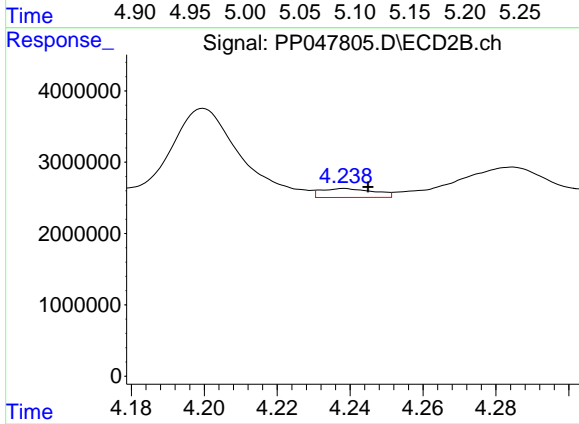
#15 AR-1232-5

R.T.: 4.701 min
 Delta R.T.: -0.016 min
 Response: 7038066
 Conc: 1773.55 ng/ml



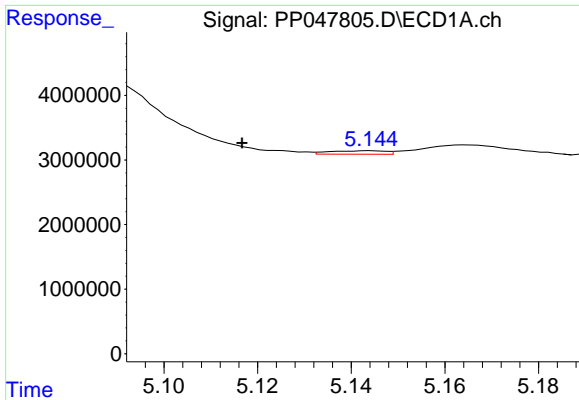
#16 AR-1242-1

R.T.: 5.089 min
 Delta R.T.: -0.007 min
 Response: 17361061
 Conc: 7357.56 ng/ml



#16 AR-1242-1

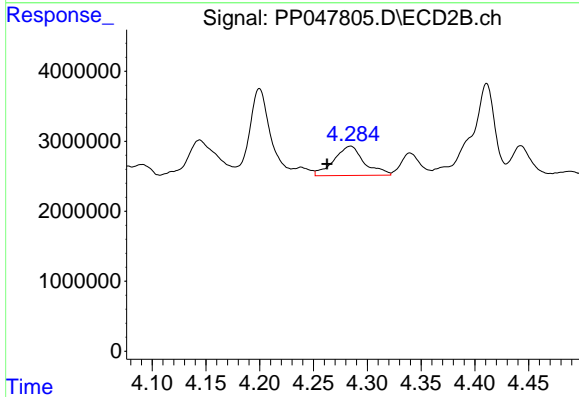
R.T.: 4.238 min
 Delta R.T.: -0.006 min
 Response: 1260685
 Conc: 361.12 ng/ml



#17 AR-1242-2

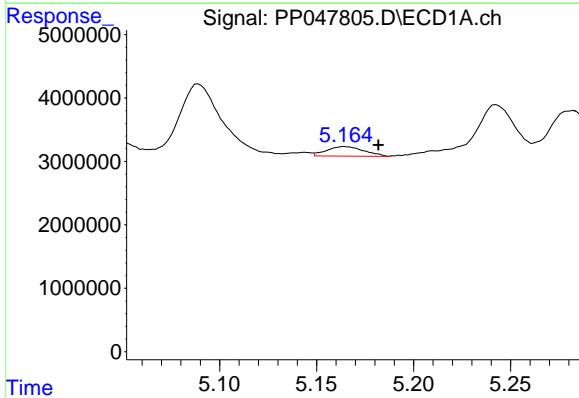
R.T.: 5.144 min
 Delta R.T.: 0.027 min
 Response: 447878
 Conc: 121.12 ng/ml

Instrument :
 ECD_P
 ClientSampleId :



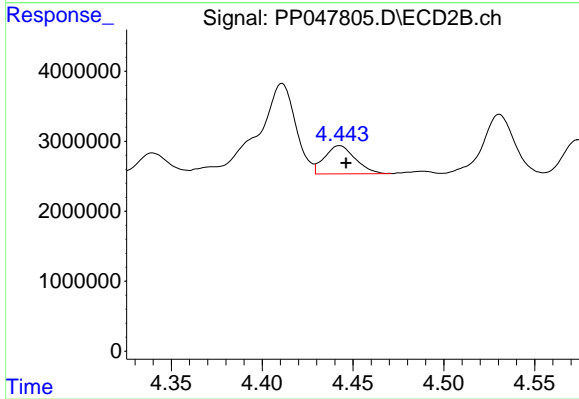
#17 AR-1242-2

R.T.: 4.284 min
 Delta R.T.: 0.022 min
 Response: 8206715
 Conc: 1518.86 ng/ml



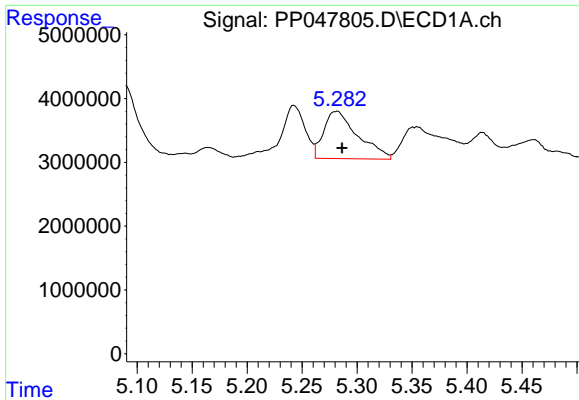
#18 AR-1242-3

R.T.: 5.165 min
 Delta R.T.: -0.017 min
 Response: 2008732
 Conc: 626.93 ng/ml



#18 AR-1242-3

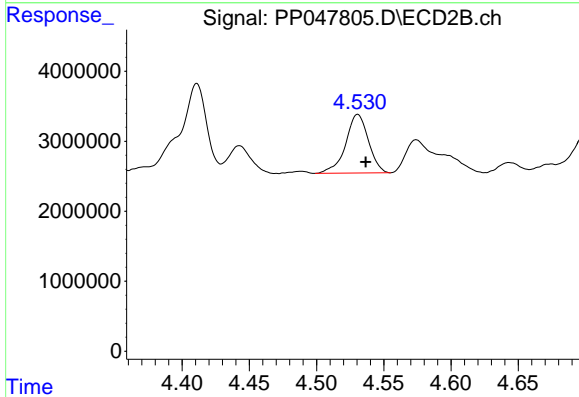
R.T.: 4.443 min
 Delta R.T.: -0.004 min
 Response: 4736023
 Conc: 1383.15 ng/ml



#19 AR-1242-4

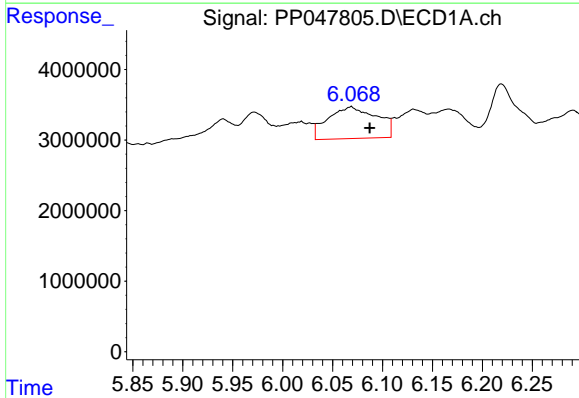
R.T.: 5.282 min
 Delta R.T.: -0.004 min
 Response: 16033722
 Conc: 5345.25 ng/ml

Instrument :
 ECD_P
 ClientSampleId :



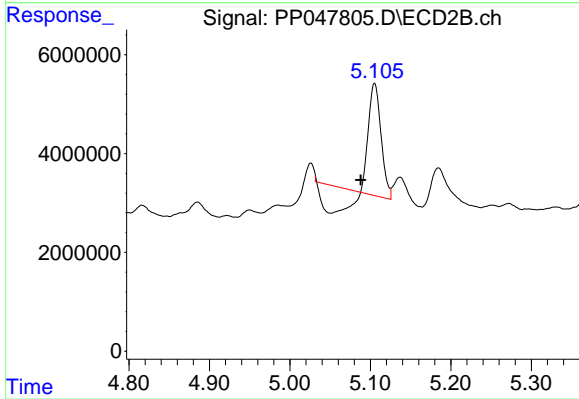
#19 AR-1242-4

R.T.: 4.531 min
 Delta R.T.: -0.006 min
 Response: 9873568
 Conc: 3443.33 ng/ml



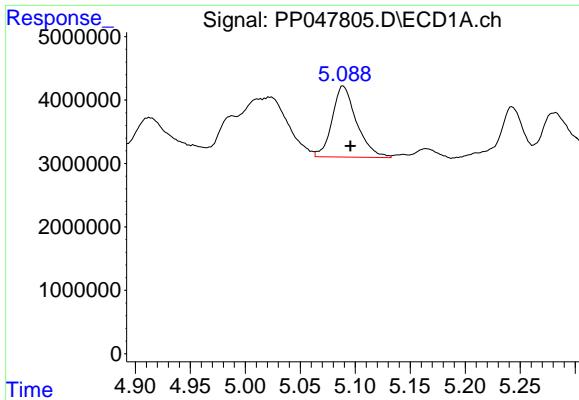
#20 AR-1242-5

R.T.: 6.069 min
 Delta R.T.: -0.018 min
 Response: 15256451
 Conc: 6626.44 ng/ml



#20 AR-1242-5

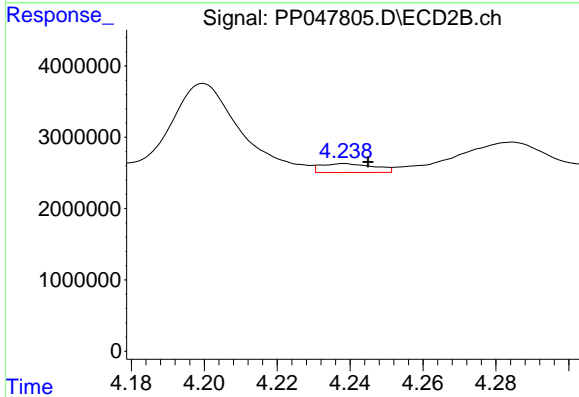
R.T.: 5.105 min
 Delta R.T.: 0.017 min
 Response: 13781132
 Conc: 558.28 ng/ml



#21 AR-1248-1

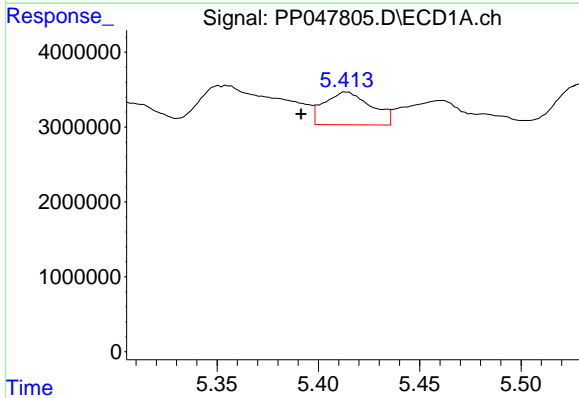
R.T.: 5.089 min
 Delta R.T.: -0.007 min
 Response: 17361061
 Conc: 7357.56 ng/ml

Instrument :
 ECD_P
 ClientSampleId :



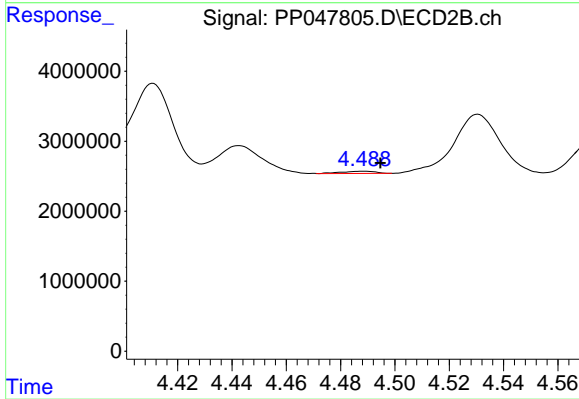
#21 AR-1248-1

R.T.: 4.238 min
 Delta R.T.: -0.006 min
 Response: 1260685
 Conc: 361.12 ng/ml



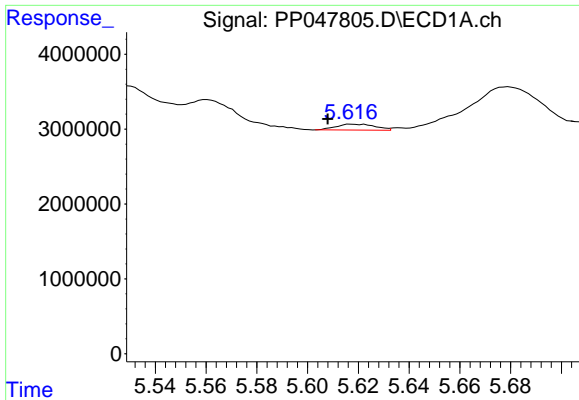
#22 AR-1248-2

R.T.: 5.414 min
 Delta R.T.: 0.023 min
 Response: 7072980
 Conc: 2146.59 ng/ml



#22 AR-1248-2

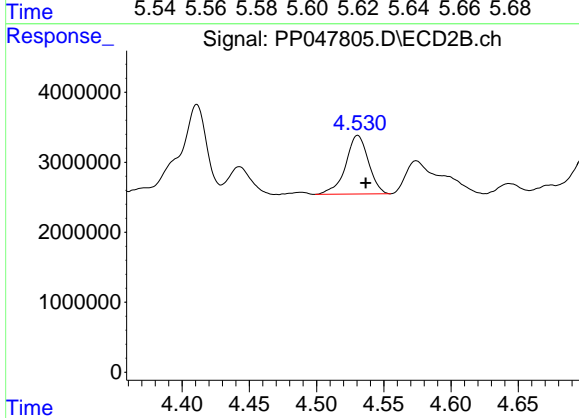
R.T.: 4.488 min
 Delta R.T.: -0.006 min
 Response: 275244
 Conc: 67.95 ng/ml



#23 AR-1248-3

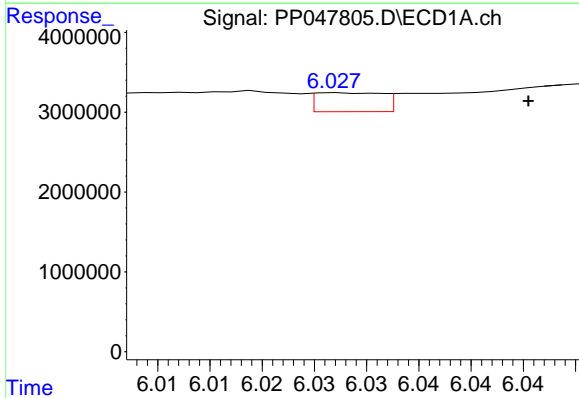
R.T.: 5.617 min
 Delta R.T.: 0.010 min
 Response: 849729
 Conc: 374.37 ng/ml

Instrument :
 ECD_P
 ClientSampleId :



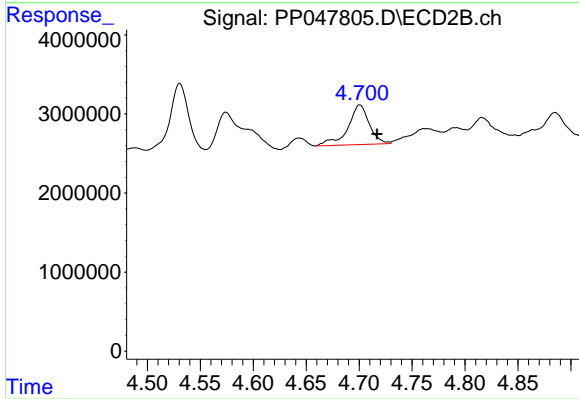
#23 AR-1248-3

R.T.: 4.531 min
 Delta R.T.: -0.006 min
 Response: 9873568
 Conc: 3443.33 ng/ml



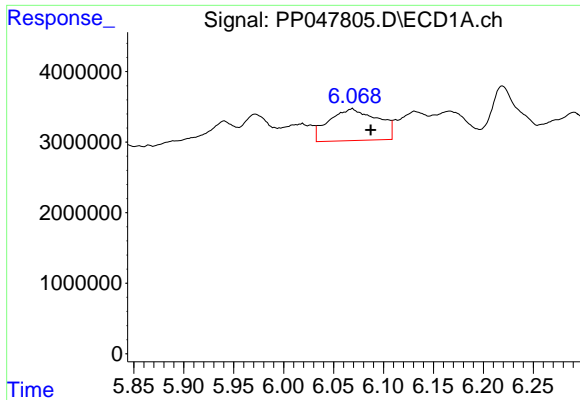
#24 AR-1248-4

R.T.: 6.027 min
 Delta R.T.: -0.018 min
 Response: 1065415
 Conc: 664.18 ng/ml



#24 AR-1248-4

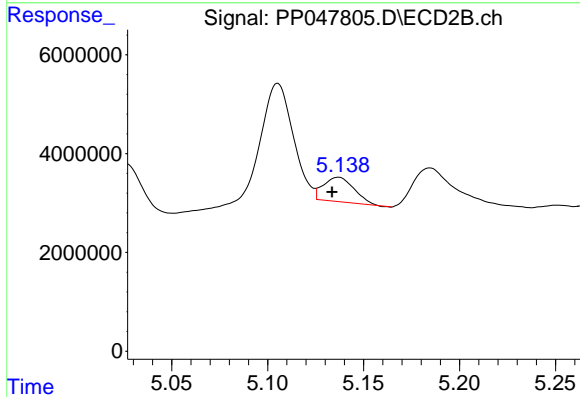
R.T.: 4.701 min
 Delta R.T.: -0.016 min
 Response: 7038066
 Conc: 1773.55 ng/ml



#25 AR-1248-5

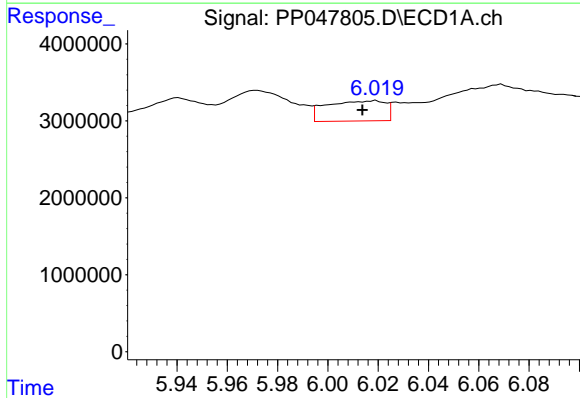
R.T.: 6.069 min
 Delta R.T.: -0.018 min
 Response: 15256451
 Conc: 6626.44 ng/m

Instrument :
 ECD_P
 ClientSampleId :



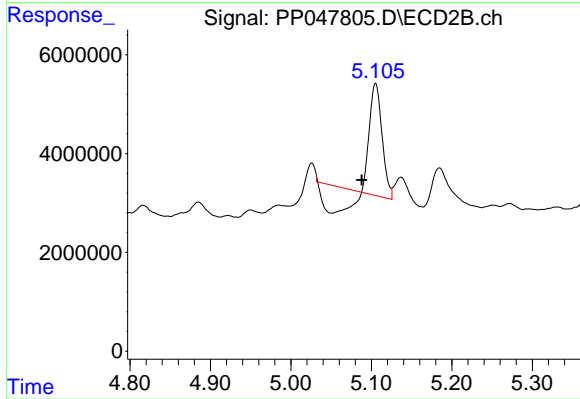
#25 AR-1248-5

R.T.: 5.137 min
 Delta R.T.: 0.003 min
 Response: 5490134
 Conc: 1859.03 ng/ml



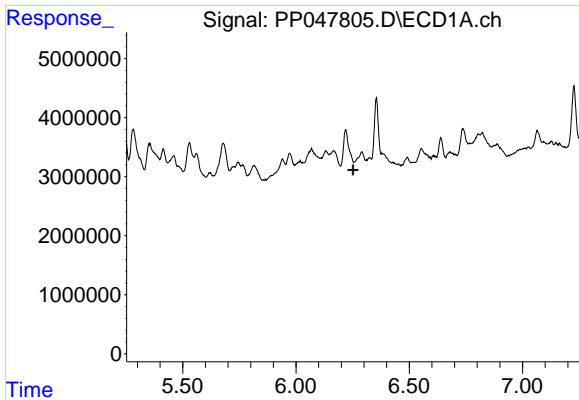
#26 AR-1254-1

R.T.: 6.019 min
 Delta R.T.: 0.005 min
 Response: 4261066
 Conc: 331.29 ng/ml



#26 AR-1254-1

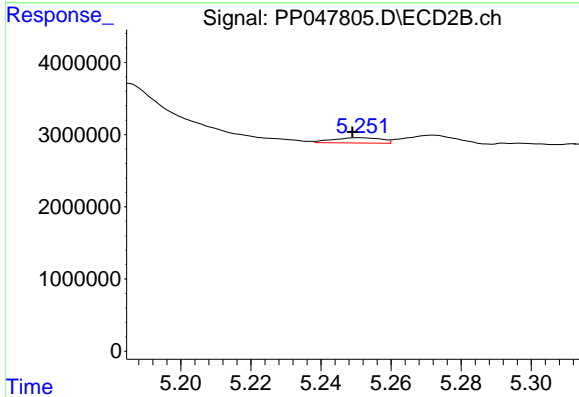
R.T.: 5.105 min
 Delta R.T.: 0.017 min
 Response: 13781132
 Conc: 558.28 ng/ml



#27 AR-1254-2

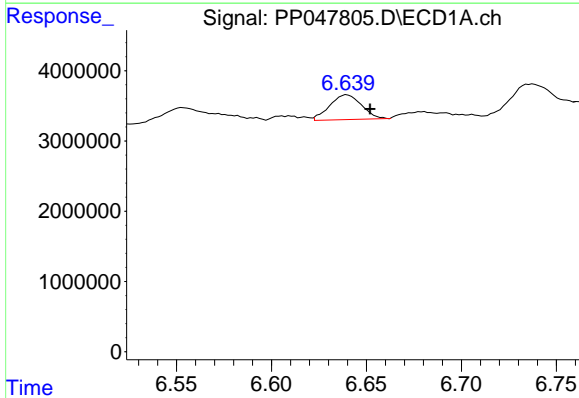
R.T.: 0.000 min
 Exp R.T.: 6.252 min
 Response: 0
 Conc: N.D.

Instrument :
 ECD_P
 ClientSampleId :



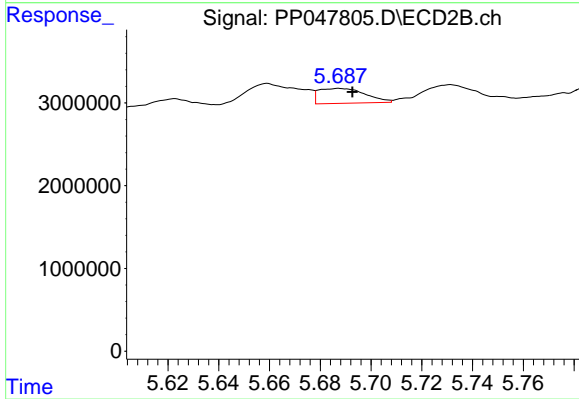
#27 AR-1254-2

R.T.: 5.251 min
 Delta R.T.: 0.002 min
 Response: 698590
 Conc: 26.18 ng/ml



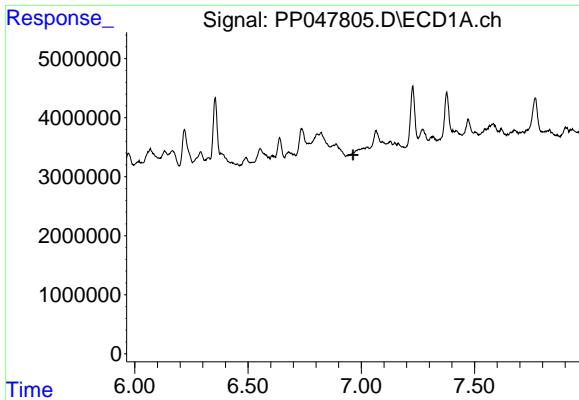
#28 AR-1254-3

R.T.: 6.640 min
 Delta R.T.: -0.012 min
 Response: 4129493
 Conc: 744.30 ng/ml



#28 AR-1254-3

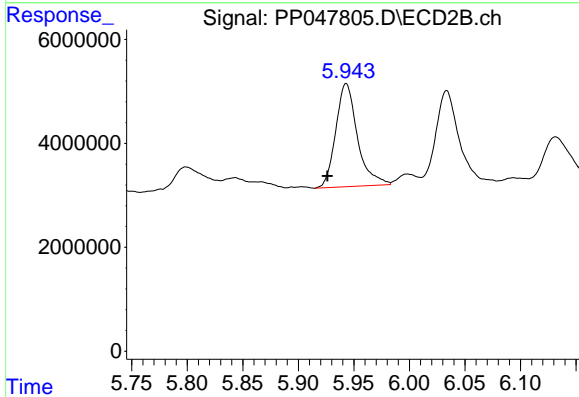
R.T.: 5.688 min
 Delta R.T.: -0.005 min
 Response: 2286671
 Conc: 20.84 ng/ml



#29 AR-1254-4

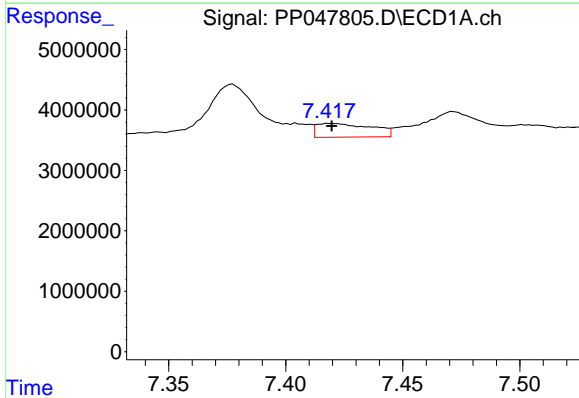
R.T.: 6.937 min
 Delta R.T.: -0.026 min
 Response: -141978
 Conc: N.D.

Instrument :
 ECD_P
 ClientSampleId :



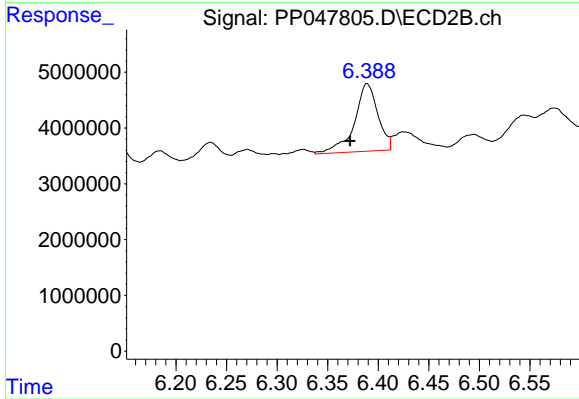
#29 AR-1254-4

R.T.: 5.943 min
 Delta R.T.: 0.017 min
 Response: 26965104
 Conc: 4904.00 ng/ml



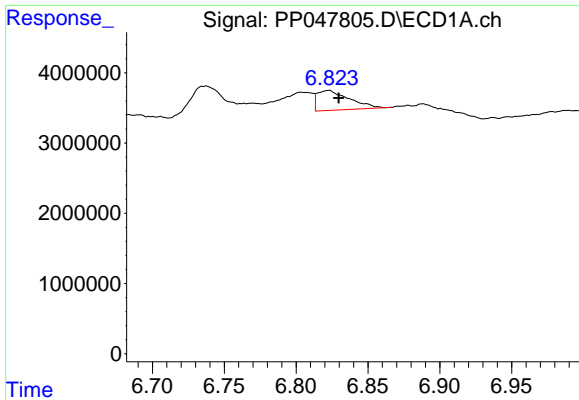
#30 AR-1254-5

R.T.: 7.419 min
 Delta R.T.: -0.001 min
 Response: 3716752
 Conc: 42.53 ng/ml



#30 AR-1254-5

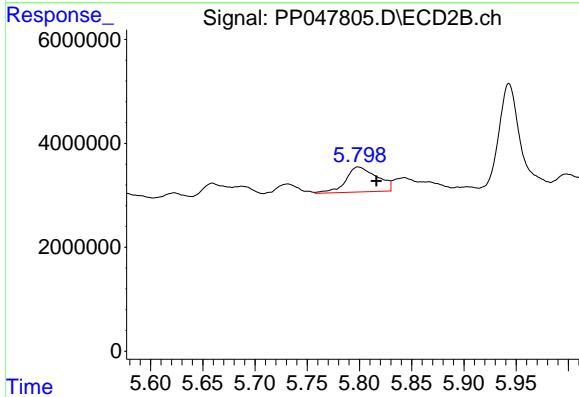
R.T.: 6.389 min
 Delta R.T.: 0.017 min
 Response: 19583294
 Conc: 147.69 ng/ml



#31 AR-1260-1

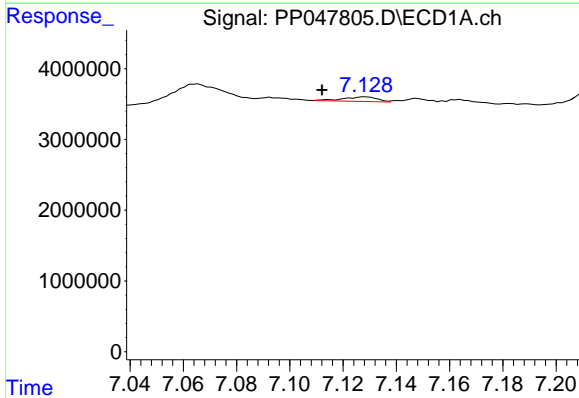
R.T.: 6.823 min
 Delta R.T.: -0.007 min
 Response: 4392101
 Conc: 48.55 ng/ml

Instrument :
 ECD_P
 ClientSampleId :



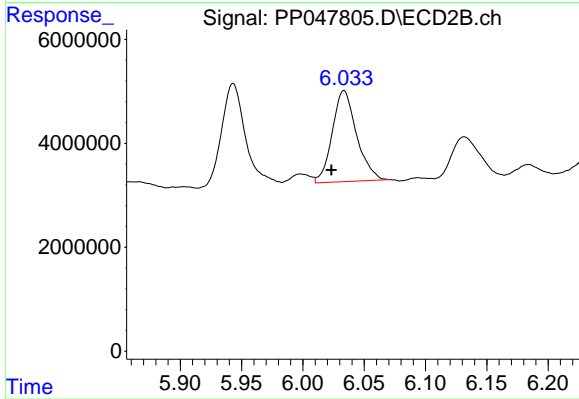
#31 AR-1260-1

R.T.: 5.799 min
 Delta R.T.: -0.017 min
 Response: 10015276
 Conc: 58.79 ng/ml



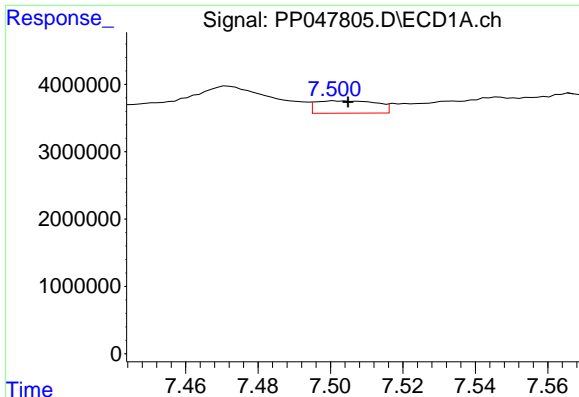
#32 AR-1260-2

R.T.: 7.129 min
 Delta R.T.: 0.016 min
 Response: 568185
 Conc: 4.89 ng/ml



#32 AR-1260-2

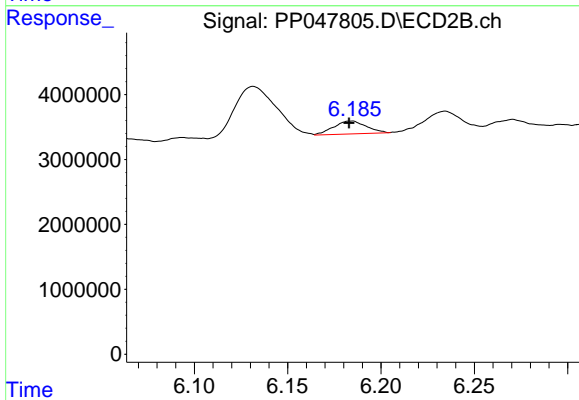
R.T.: 6.034 min
 Delta R.T.: 0.010 min
 Response: 24190308
 Conc: 99.73 ng/ml



#33 AR-1260-3

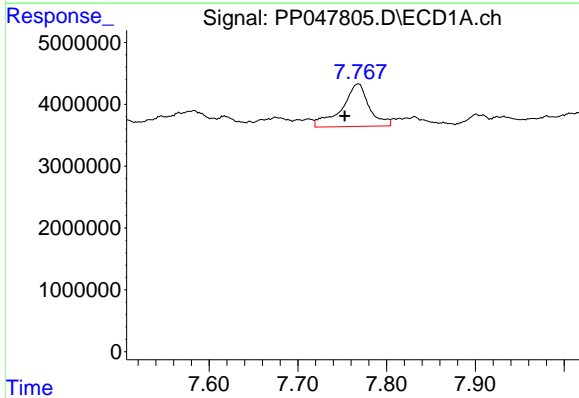
R.T.: 7.501 min
 Delta R.T.: -0.003 min
 Response: 2147664
 Conc: 20.84 ng/ml

Instrument :
 ECD_P
 ClientSampleId :



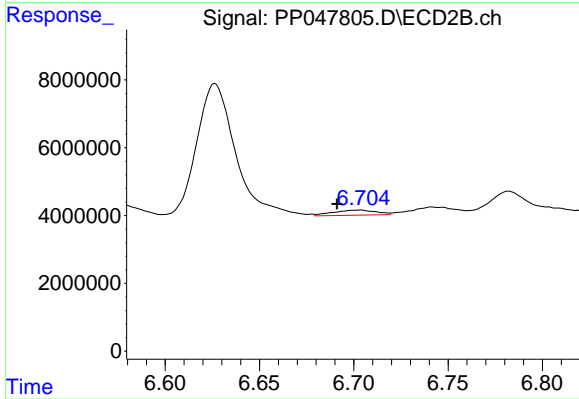
#33 AR-1260-3

R.T.: 6.184 min
 Delta R.T.: 0.001 min
 Response: 2427447
 Conc: 12.15 ng/ml



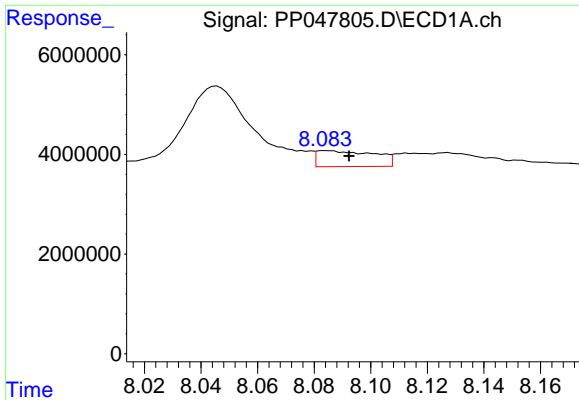
#34 AR-1260-4

R.T.: 7.768 min
 Delta R.T.: 0.015 min
 Response: 14804070
 Conc: 153.20 ng/ml



#34 AR-1260-4

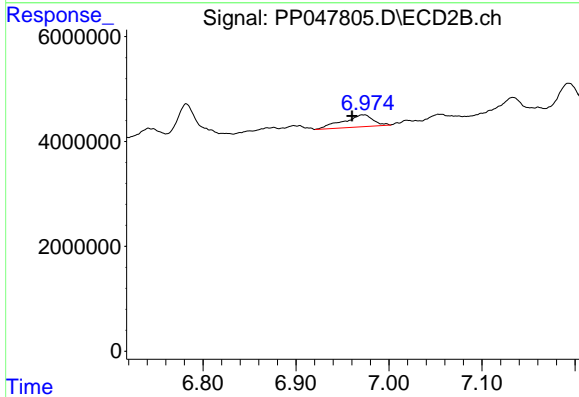
R.T.: 6.703 min
 Delta R.T.: 0.012 min
 Response: 2381786
 Conc: 13.48 ng/ml



#35 AR-1260-5

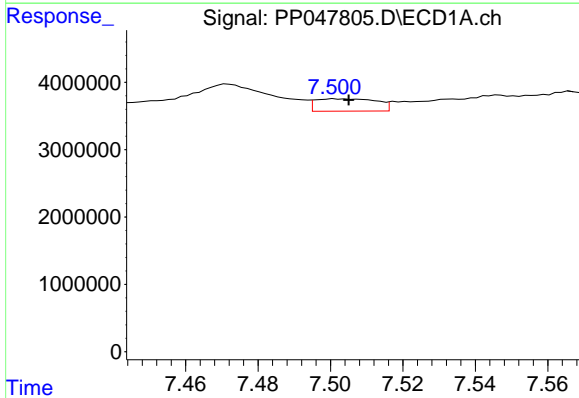
R.T.: 8.085 min
 Delta R.T.: -0.008 min
 Response: 4544265
 Conc: 25.40 ng/ml

Instrument :
 ECD_P
 ClientSampleId :



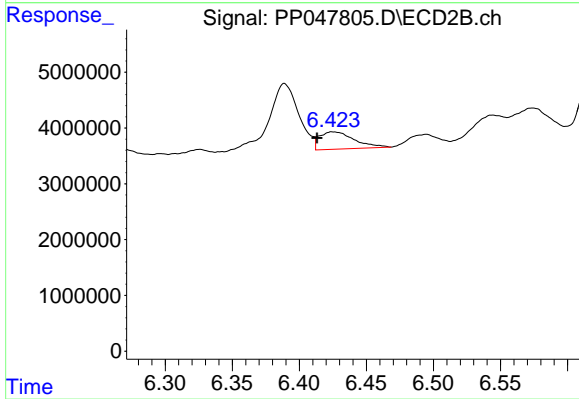
#35 AR-1260-5

R.T.: 6.972 min
 Delta R.T.: 0.012 min
 Response: 5107104
 Conc: 10.86 ng/ml



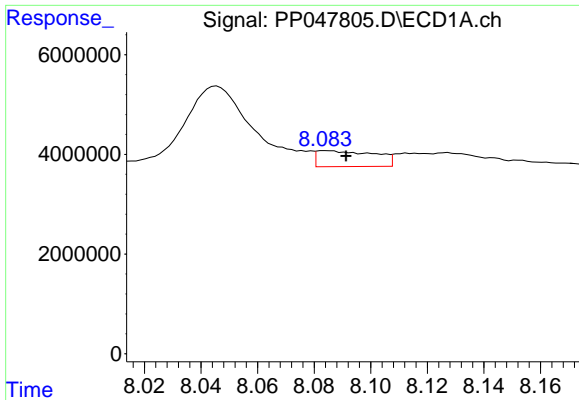
#36 AR-1262-1

R.T.: 7.501 min
 Delta R.T.: -0.004 min
 Response: 2147664
 Conc: 14.11 ng/ml



#36 AR-1262-1

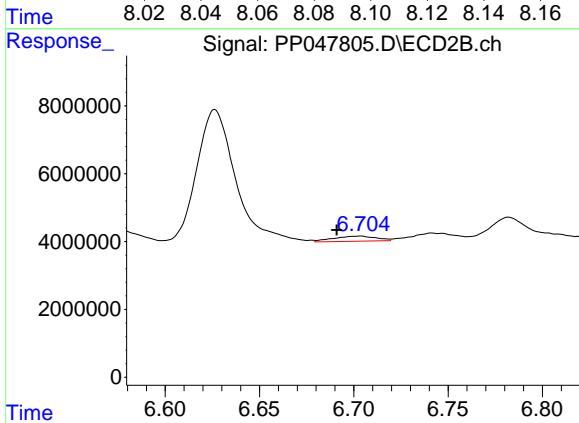
R.T.: 6.425 min
 Delta R.T.: 0.012 min
 Response: 5637818
 Conc: 17.33 ng/ml



#37 AR-1262-2

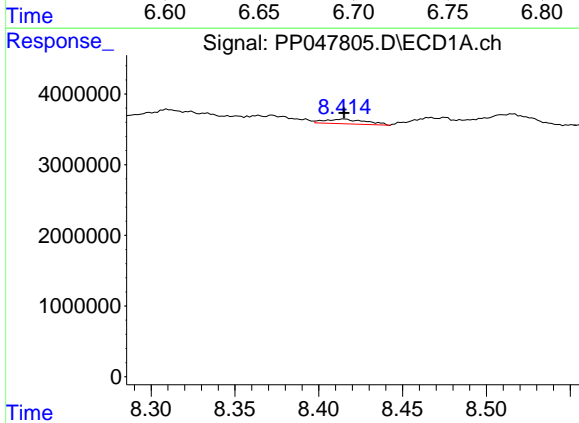
R.T.: 8.085 min
 Delta R.T.: -0.007 min
 Response: 4544265
 Conc: 21.31 ng/ml

Instrument :
 ECD_P
 ClientSampleId :



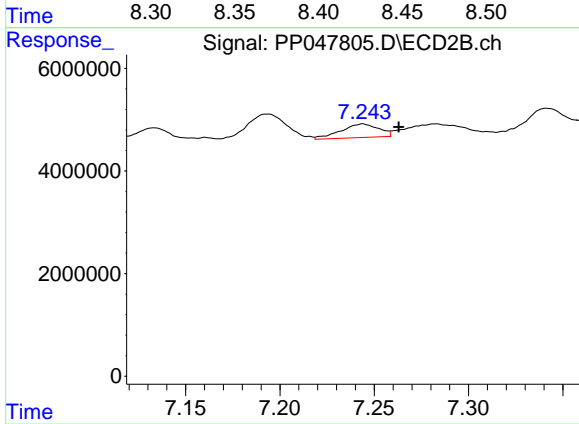
#37 AR-1262-2

R.T.: 6.703 min
 Delta R.T.: 0.012 min
 Response: 2381786
 Conc: 9.75 ng/ml



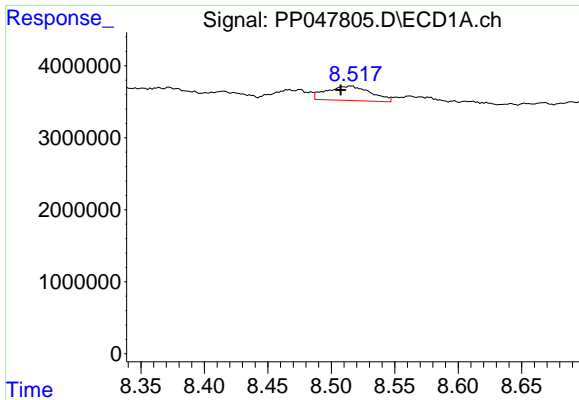
#38 AR-1262-3

R.T.: 8.415 min
 Delta R.T.: 0.000 min
 Response: 1146511
 Conc: 8.12 ng/ml



#38 AR-1262-3

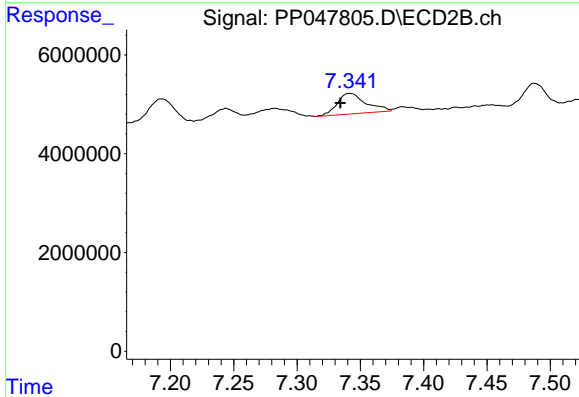
R.T.: 7.244 min
 Delta R.T.: -0.019 min
 Response: 3729654
 Conc: 17.31 ng/ml



#39 AR-1262-4

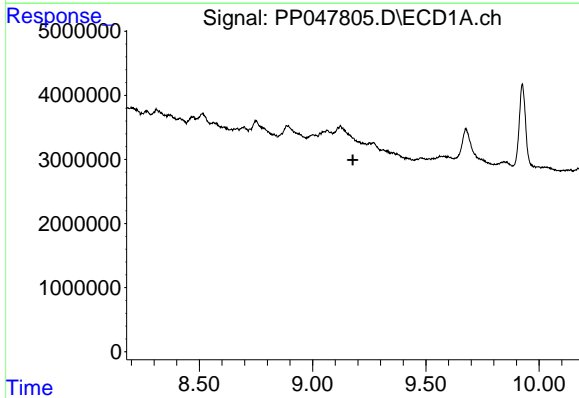
R.T.: 8.516 min
 Delta R.T.: 0.008 min
 Response: 4868786
 Conc: 80.89 ng/ml

Instrument :
 ECD_P
 ClientSampleId :



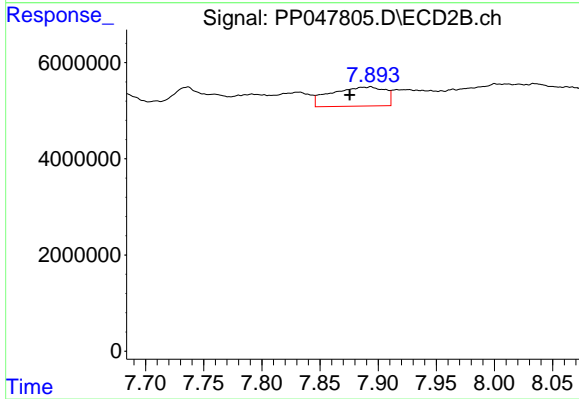
#39 AR-1262-4

R.T.: 7.342 min
 Delta R.T.: 0.008 min
 Response: 6608489
 Conc: 18.30 ng/ml



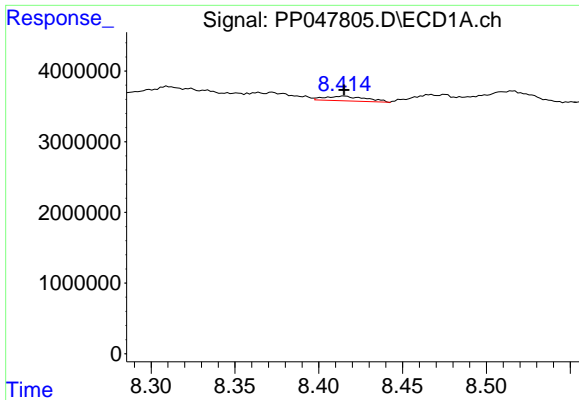
#40 AR-1262-5

R.T.: 0.000 min
 Exp R.T. : 9.177 min
 Response: 0
 Conc: N.D.



#40 AR-1262-5

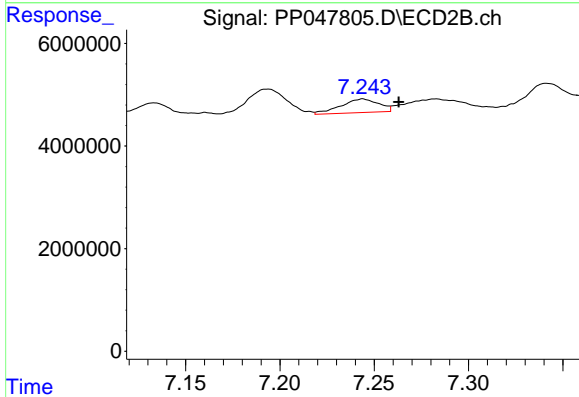
R.T.: 7.893 min
 Delta R.T.: 0.018 min
 Response: 12829859
 Conc: 74.52 ng/ml



#41 AR-1268-1

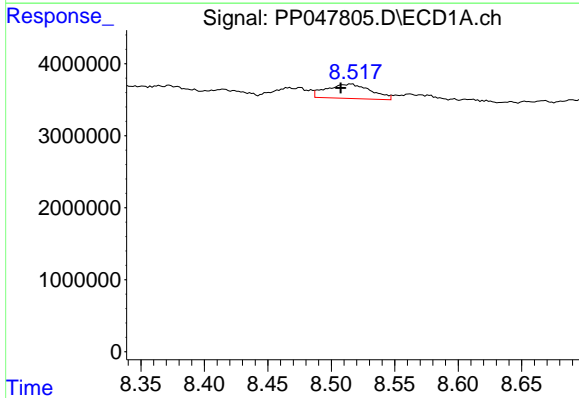
R.T.: 8.415 min
 Delta R.T.: 0.000 min
 Response: 1146511
 Conc: 8.12 ng/ml

Instrument :
 ECD_P
 ClientSampleId :



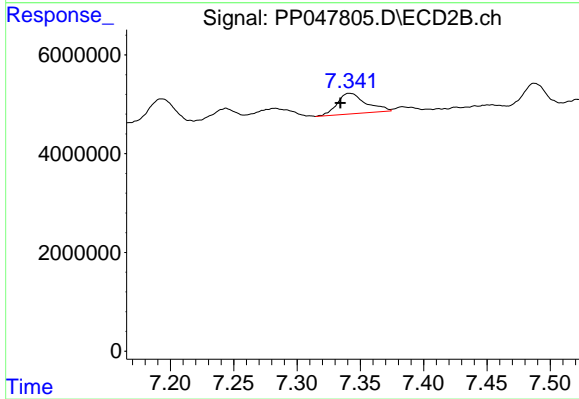
#41 AR-1268-1

R.T.: 7.244 min
 Delta R.T.: -0.019 min
 Response: 3729654
 Conc: 17.31 ng/ml



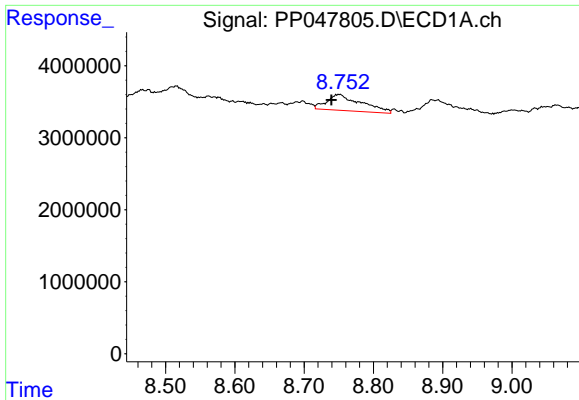
#42 AR-1268-2

R.T.: 8.516 min
 Delta R.T.: 0.008 min
 Response: 4868786
 Conc: 43.68 ng/ml



#42 AR-1268-2

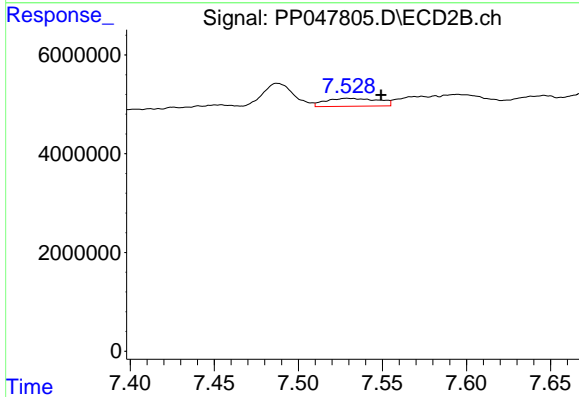
R.T.: 7.342 min
 Delta R.T.: 0.008 min
 Response: 6608489
 Conc: 18.30 ng/ml



#43 AR-1268-3

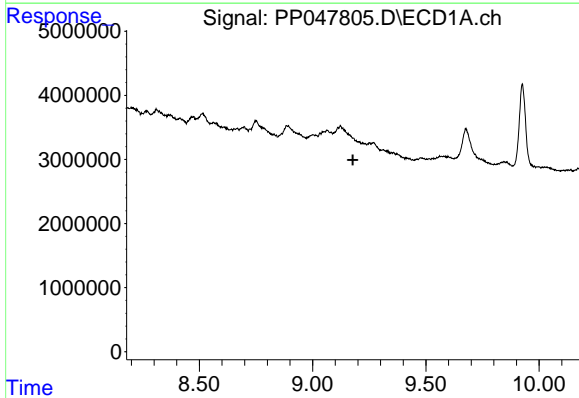
R.T.: 8.751 min
 Delta R.T.: 0.012 min
 Response: 7706845
 Conc: 1160.15 ng/ml

Instrument :
 ECD_P
 ClientSampleId :



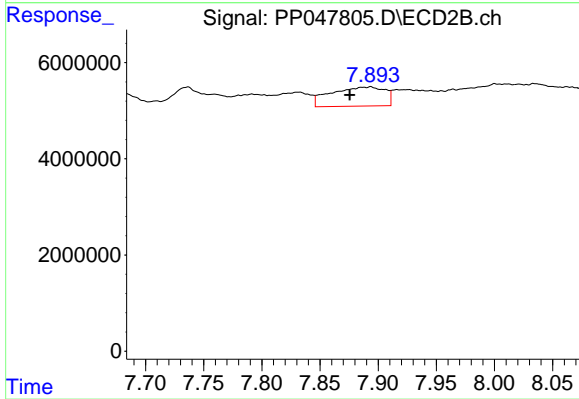
#43 AR-1268-3

R.T.: 7.529 min
 Delta R.T.: -0.020 min
 Response: 3511226
 Conc: 189.30 ng/ml



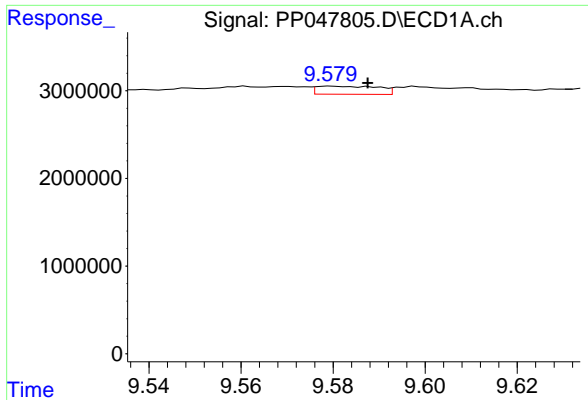
#44 AR-1268-4

R.T.: 0.000 min
 Exp R.T. : 9.177 min
 Response: 0
 Conc: N.D.



#44 AR-1268-4

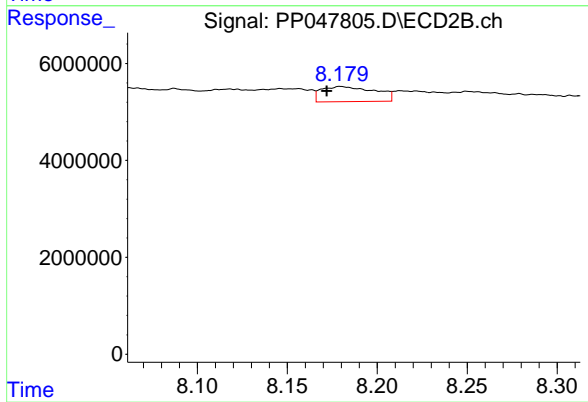
R.T.: 7.893 min
 Delta R.T.: 0.018 min
 Response: 12829859
 Conc: 74.52 ng/ml



#45 AR-1268-5

R.T.: 9.580 min
Delta R.T.: -0.008 min
Response: 863623
Conc: 32.30 ng/ml

Instrument :
ECD_P
ClientSampleId :



#45 AR-1268-5

R.T.: 8.180 min
Delta R.T.: 0.008 min
Response: 6510080
Conc: 108.59 ng/ml