

Data Path : Z:\pestpcbsrv\HPCHEM1\ECD\_P\Data\PP052124\  
 Data File : PP065115.D  
 Signal(s) : Signal #1: ECD1A.ch Signal #2: ECD2B.ch  
 Acq On : 21 May 2024 18:48  
 Operator : YP\AJ  
 Sample : AR1248ICV500  
 Misc :  
 ALS Vial : 33 Sample Multiplier: 1

Instrument :  
 ECD\_P  
 ClientSampleId :  
 ICVPP052124

Integration File signal 1: autoint1.e  
 Integration File signal 2: autoint2.e  
 Quant Time: May 21 19:01:58 2024  
 Quant Method : Z:\pestpcbsrv\HPCHEM1\ECD\_P\methods\PP052124.M  
 Quant Title : GC EXTRACTABLES  
 QLast Update : Tue May 21 18:19:41 2024  
 Response via : Initial Calibration  
 Integrator: ChemStation

Volume Inj. : 2 µl  
 Signal #1 Phase : ZB-MR1 Signal #2 Phase: ZB-MR2  
 Signal #1 Info : 30Mx0.32mmx 0.50µ Signal #2 Info : 30M x 0.32mm x 0.25µm

Compound	RT#1	RT#2	Resp#1	Resp#2	ng/ml	ng/ml
System Monitoring Compounds						
1) SA Tetrachlo...	4.470	3.755	85194618	78566951	53.978	51.754
2) SA Decachlor...	10.207	8.835	72778666	71135798	55.971	53.969
Target Compounds						
3) L1 AR-1016-1	5.635	4.857	16786633	15433070	353.248	327.363
4) L1 AR-1016-2	5.659	4.877	21673386	15685798	288.558	233.421
5) L1 AR-1016-3	5.721	5.057	11459842	11328532	236.103	308.936 #
6) L1 AR-1016-4	5.818	5.097	12037892	23160849	318.220	745.838 #
7) L1 AR-1016-5	6.112	5.313	28815532	28307617	757.666	707.637
8) L2 AR-1221-1	4.678	0.000	249917	0	12.463	N.D. #
9) L2 AR-1221-2	4.775	4.060	1493518	1391262	99.194	92.584
10) L2 AR-1221-3	4.840	4.136	1631384	1479697	35.811	33.455
11) L3 AR-1232-1	4.840	4.136	1631384	1479697	43.311	40.093
12) L3 AR-1232-2	5.368	4.877	8658222	15685798	406.460	480.651
13) L3 AR-1232-3	5.659	5.057	21673386	11328532	595.251	642.757
14) L3 AR-1232-4	5.818	5.140	12037892	24317281	651.711	1450.221 #
15) L3 AR-1232-5	5.908	5.313	26782968	28307617	1750.228	1567.531
16) L4 AR-1242-1	5.635	4.857	16786633	15433070	406.755	383.976
17) L4 AR-1242-2	5.659	4.877	21673386	15685798	335.993	277.654
18) L4 AR-1242-3	5.721	5.057	11459842	11328532	273.769	368.446 #
19) L4 AR-1242-4	5.818	5.140	12037892	24317281	366.696	749.821 #
20) L4 AR-1242-5	6.554	5.667	28603046	36424180	899.500	1003.170
21) L5 AR-1248-1	5.635	4.857	16786633	15433070	505.768	512.046
22) L5 AR-1248-2	5.908	5.097	26782968	23160849	526.269	509.493
23) L5 AR-1248-3	6.112	5.140	28815532	24317281	528.064	511.299
24) L5 AR-1248-4	6.516	5.313	28583999	28307617	522.006	512.661
25) L5 AR-1248-5	6.554	5.710	28603046	25085882	531.268	522.420
26) L6 AR-1254-1	6.488	5.667	22502351	36424180	364.462	456.569 #
27) L6 AR-1254-2	6.710	5.816	29115078	12717309	317.358	180.337 #
28) L6 AR-1254-3	7.072	6.224	16717086	17965739	179.711	163.011
29) L6 AR-1254-4	7.357	6.452	10281475	11367639	169.601	201.360
30) L6 AR-1254-5	7.775	6.873	2866115	3288979	40.799	35.297
31) L7 AR-1260-1	7.237	6.371	2064065	8916195	29.906	118.715 #
32) L7 AR-1260-2	7.491	6.541	3016535	1785598	39.059	20.631 #
33) L7 AR-1260-3	7.835	6.698	604255	2307732	10.093	27.104 #
34) L7 AR-1260-4	8.063	0.000	1316843	0	19.562	N.D. #
35) L7 AR-1260-5	8.397	7.411	650884	419216	5.493	3.168 #
36) L8 AR-1262-1	7.910	0.000	81991	0	2.135	N.D. #
37) L8 AR-1262-2	8.397	0.000	650884	0	4.507	N.D. #
38) L8 AR-1262-3	8.726f	0.000	168139	0	1.611	N.D. #
39) L8 AR-1262-4	0.000	7.763	0	438243	N.D.	3.602 #
41) L9 AR-1268-1	8.726f	0.000	168139	0	0.908	N.D. #
42) L9 AR-1268-2	0.000	7.763	0	438243	N.D.	2.535 #

Data Path : Z:\pestpcbsrv\HPCHEM1\ECD\_P\Data\PP052124\  
 Data File : PP065115.D  
 Signal(s) : Signal #1: ECD1A.ch Signal #2: ECD2B.ch  
 Acq On : 21 May 2024 18:48  
 Operator : YP\AJ  
 Sample : AR1248ICV500  
 Misc :  
 ALS Vial : 33 Sample Multiplier: 1

Instrument :  
 ECD\_P  
 ClientSampleId :  
 ICVPP052124

Integration File signal 1: autoint1.e  
 Integration File signal 2: autoint2.e  
 Quant Time: May 21 19:01:58 2024  
 Quant Method : Z:\pestpcbsrv\HPCHEM1\ECD\_P\methods\PP052124.M  
 Quant Title : GC EXTRACTABLES  
 QLast Update : Tue May 21 18:19:41 2024  
 Response via : Initial Calibration  
 Integrator: ChemStation

Volume Inj. : 2 µl  
 Signal #1 Phase : ZB-MR1 Signal #2 Phase: ZB-MR2  
 Signal #1 Info : 30Mx0.32mmx 0.50µ Signal #2 Info : 30M x 0.32mm x 0.25µm

	Compound	RT#1	RT#2	Resp#1	Resp#2	ng/ml	ng/ml
43)	L9 AR-1268-3	9.035	0.000	131762	0	0.871	N.D. #
45)	L9 AR-1268-5	9.872	8.565	471053	327704	1.040	0.691 #

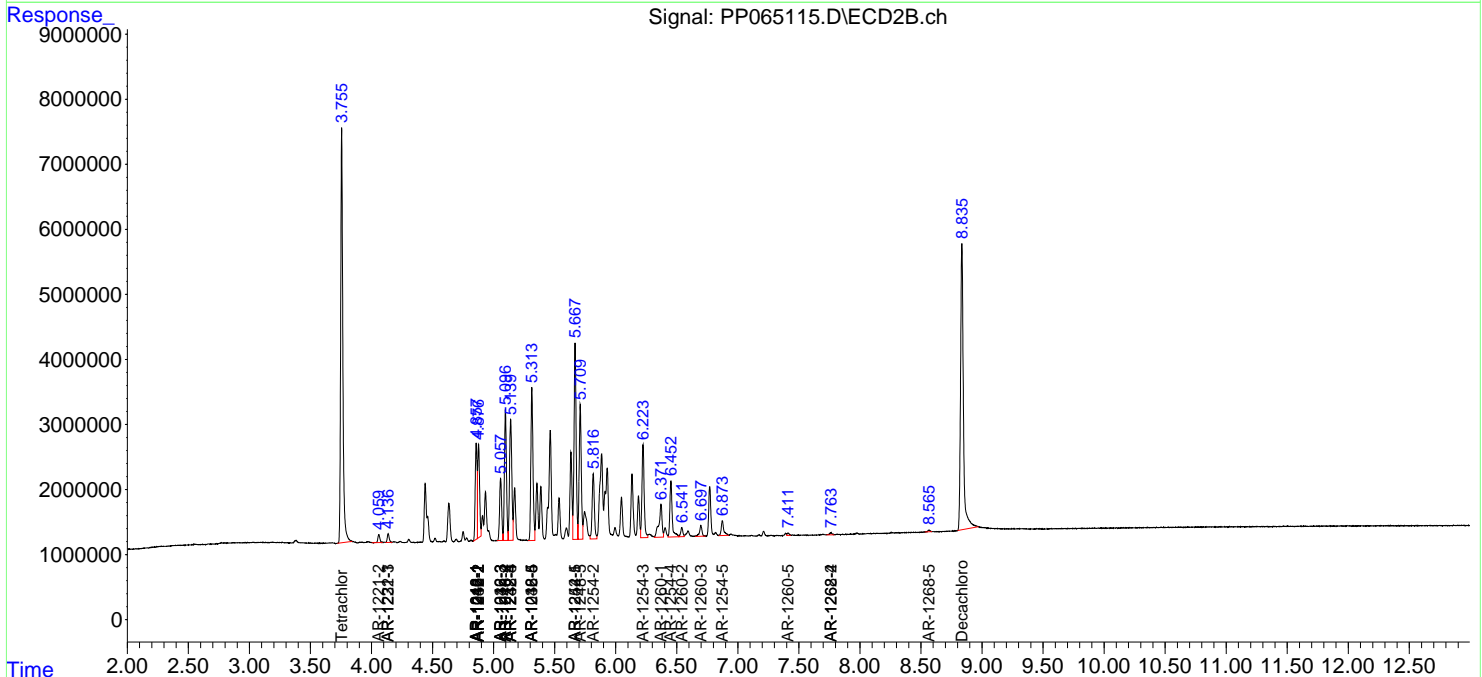
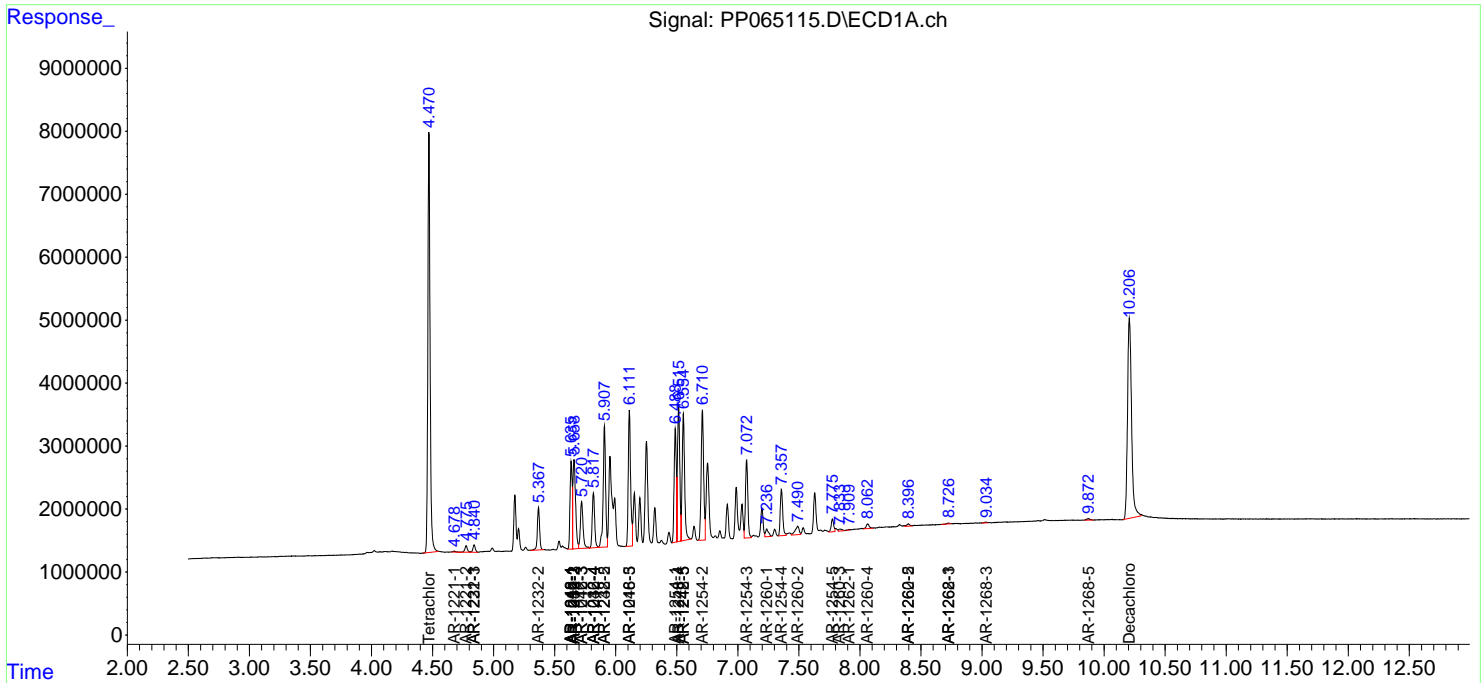
(f)=RT Delta > 1/2 Window (#)=Amounts differ by > 25% (m)=manual int.

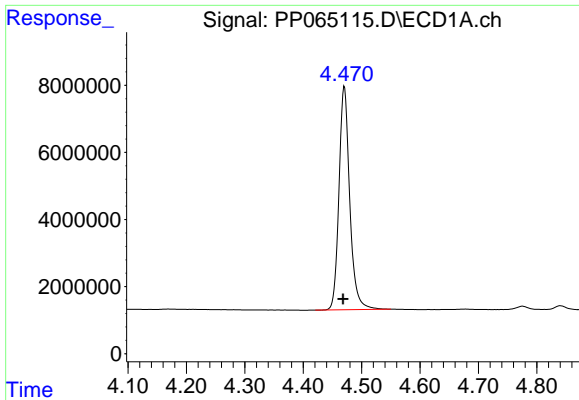
Data Path : Z:\pestpcbsrv\HPCHEM1\ECD\_P\Data\PP052124\  
 Data File : PP065115.D  
 Signal(s) : Signal #1: ECD1A.ch Signal #2: ECD2B.ch  
 Acq On : 21 May 2024 18:48  
 Operator : YP\AJ  
 Sample : AR1248ICV500  
 Misc :  
 ALS Vial : 33 Sample Multiplier: 1

Instrument :  
 ECD\_P  
 ClientSampleId :  
 ICVPP052124

Integration File signal 1: autoint1.e  
 Integration File signal 2: autoint2.e  
 Quant Time: May 21 19:01:58 2024  
 Quant Method : Z:\pestpcbsrv\HPCHEM1\ECD\_P\methods\PP052124.M  
 Quant Title : GC EXTRACTABLES  
 QLast Update : Tue May 21 18:19:41 2024  
 Response via : Initial Calibration  
 Integrator: ChemStation

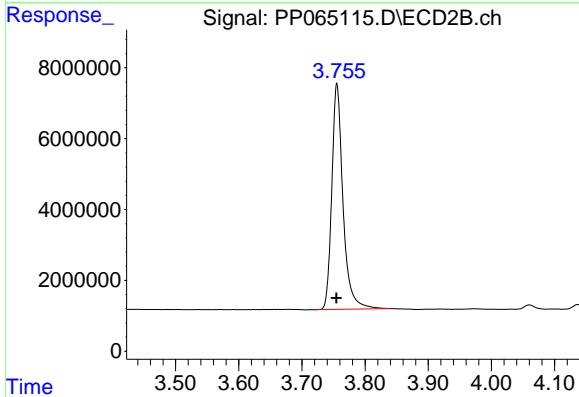
Volume Inj. : 2 µl  
 Signal #1 Phase : ZB-MR1 Signal #2 Phase: ZB-MR2  
 Signal #1 Info : 30Mx0.32mmx 0.50µ Signal #2 Info : 30M x 0.32mm x 0.25µm



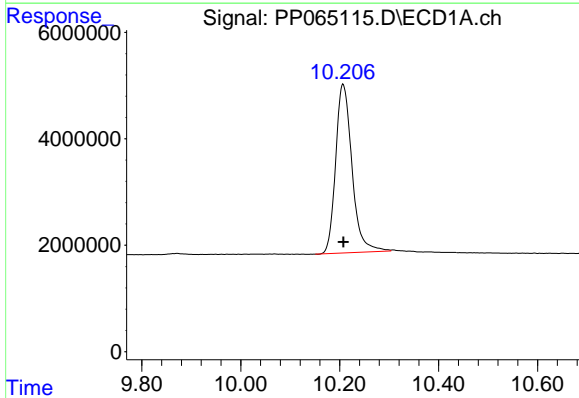


#1 Tetrachloro-m-xylene  
 R.T.: 4.470 min  
 Delta R.T.: 0.002 min  
 Response: 85194618  
 Conc: 53.98 ng/ml

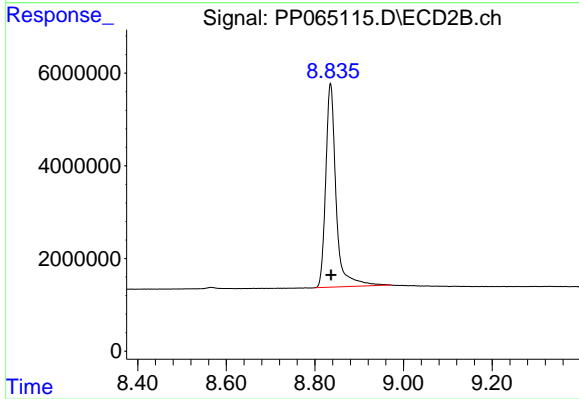
Instrument :  
 ECD\_P  
 ClientSampleId :  
 ICVPP052124



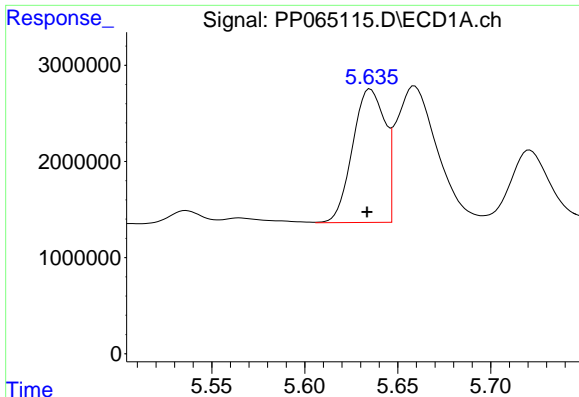
#1 Tetrachloro-m-xylene  
 R.T.: 3.755 min  
 Delta R.T.: 0.001 min  
 Response: 78566951  
 Conc: 51.75 ng/ml



#2 Decachlorobiphenyl  
 R.T.: 10.207 min  
 Delta R.T.: 0.000 min  
 Response: 72778666  
 Conc: 55.97 ng/ml



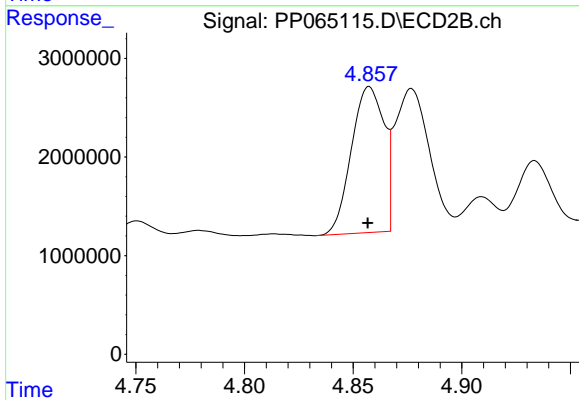
#2 Decachlorobiphenyl  
 R.T.: 8.835 min  
 Delta R.T.: 0.000 min  
 Response: 71135798  
 Conc: 53.97 ng/ml



#3 AR-1016-1

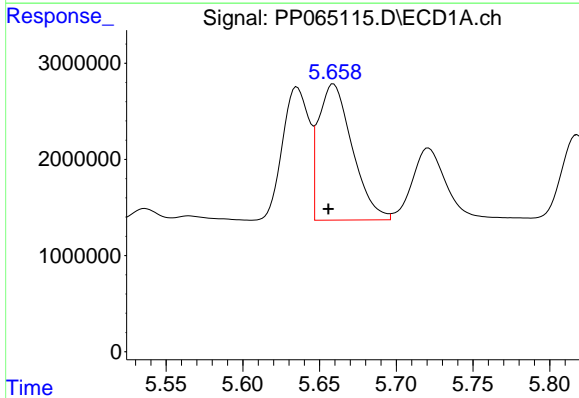
R.T.: 5.635 min  
 Delta R.T.: 0.002 min  
 Response: 16786633  
 Conc: 353.25 ng/ml

Instrument :  
 ECD\_P  
 ClientSampleId :  
 ICVPP052124



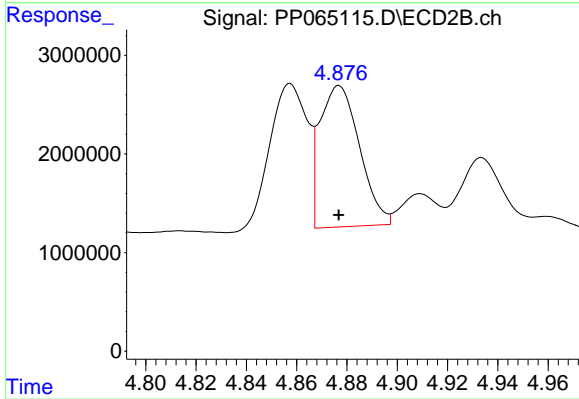
#3 AR-1016-1

R.T.: 4.857 min  
 Delta R.T.: 0.000 min  
 Response: 15433070  
 Conc: 327.36 ng/ml



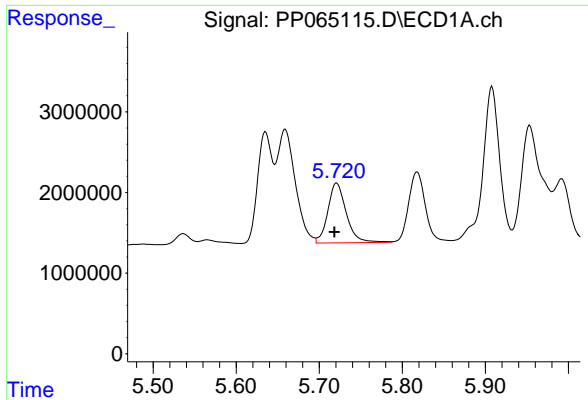
#4 AR-1016-2

R.T.: 5.659 min  
 Delta R.T.: 0.003 min  
 Response: 21673386  
 Conc: 288.56 ng/ml



#4 AR-1016-2

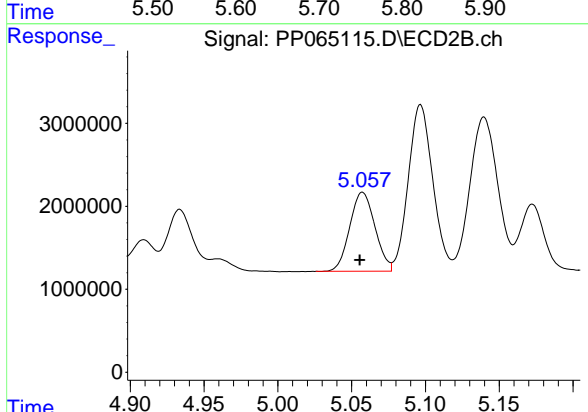
R.T.: 4.877 min  
 Delta R.T.: 0.000 min  
 Response: 15685798  
 Conc: 233.42 ng/ml



#5 AR-1016-3

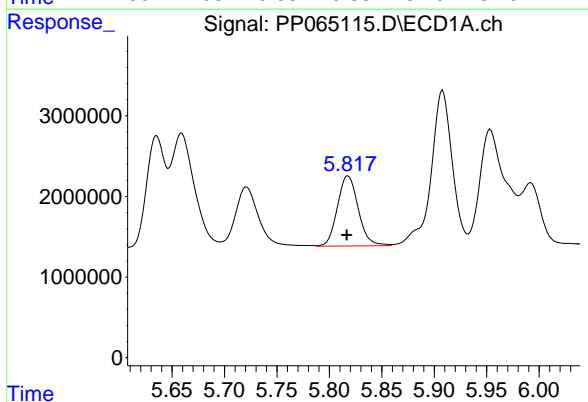
R.T.: 5.721 min  
 Delta R.T.: 0.003 min  
 Response: 11459842  
 Conc: 236.10 ng/ml

Instrument :  
 ECD\_P  
 ClientSampleId :  
 ICVPP052124



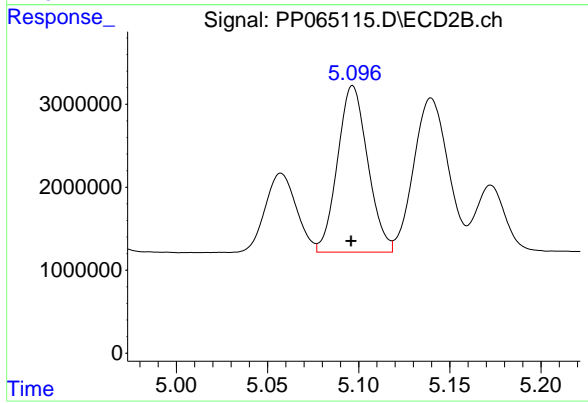
#5 AR-1016-3

R.T.: 5.057 min  
 Delta R.T.: 0.002 min  
 Response: 11328532  
 Conc: 308.94 ng/ml



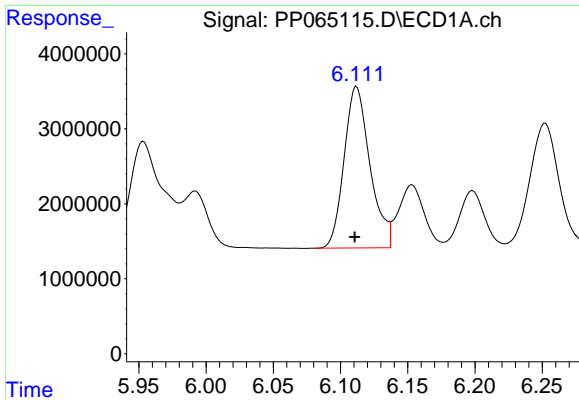
#6 AR-1016-4

R.T.: 5.818 min  
 Delta R.T.: 0.001 min  
 Response: 12037892  
 Conc: 318.22 ng/ml



#6 AR-1016-4

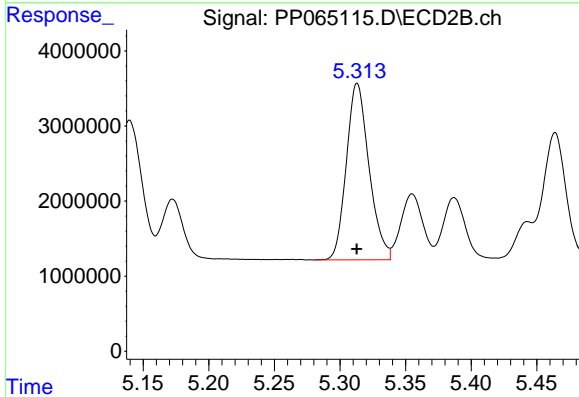
R.T.: 5.097 min  
 Delta R.T.: 0.000 min  
 Response: 23160849  
 Conc: 745.84 ng/ml



#7 AR-1016-5

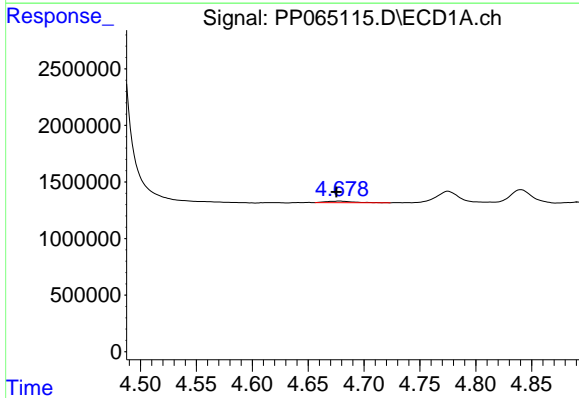
R.T.: 6.112 min  
 Delta R.T.: 0.002 min  
 Response: 28815532  
 Conc: 757.67 ng/ml

Instrument :  
 ECD\_P  
 ClientSampleId :  
 ICVPP052124



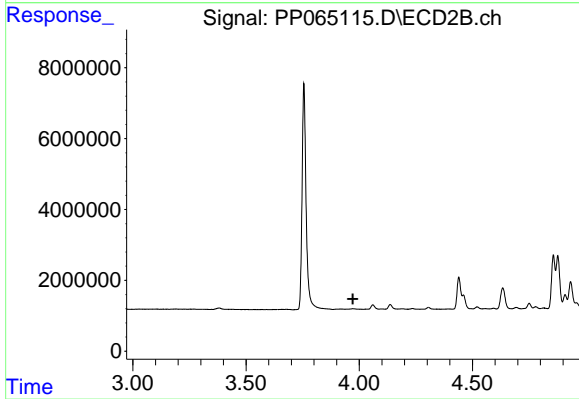
#7 AR-1016-5

R.T.: 5.313 min  
 Delta R.T.: 0.000 min  
 Response: 28307617  
 Conc: 707.64 ng/ml



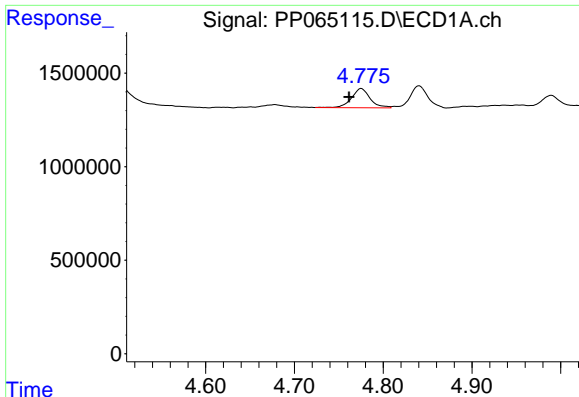
#8 AR-1221-1

R.T.: 4.678 min  
 Delta R.T.: 0.003 min  
 Response: 249917  
 Conc: 12.46 ng/ml



#8 AR-1221-1

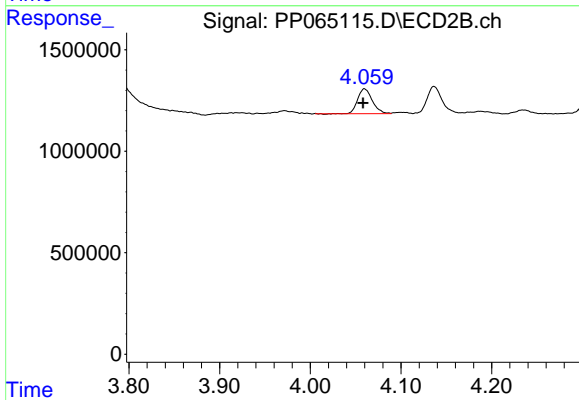
R.T.: 0.000 min  
 Exp R.T. : 3.972 min  
 Response: 0  
 Conc: N.D.



#9 AR-1221-2

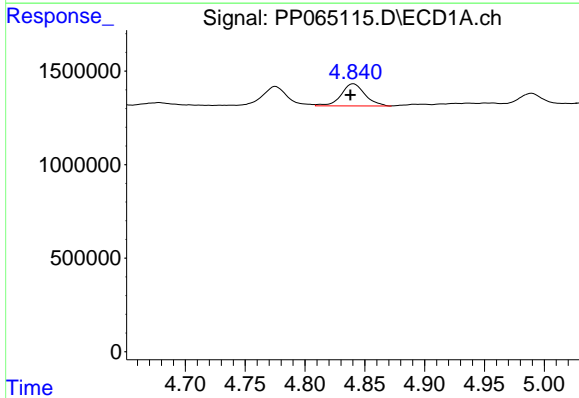
R.T.: 4.775 min  
 Delta R.T.: 0.014 min  
 Response: 1493518  
 Conc: 99.19 ng/ml

Instrument :  
 ECD\_P  
 ClientSampleId :  
 ICVPP052124



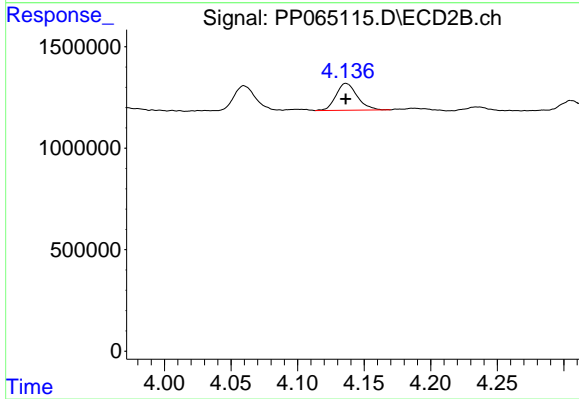
#9 AR-1221-2

R.T.: 4.060 min  
 Delta R.T.: 0.002 min  
 Response: 1391262  
 Conc: 92.58 ng/ml



#10 AR-1221-3

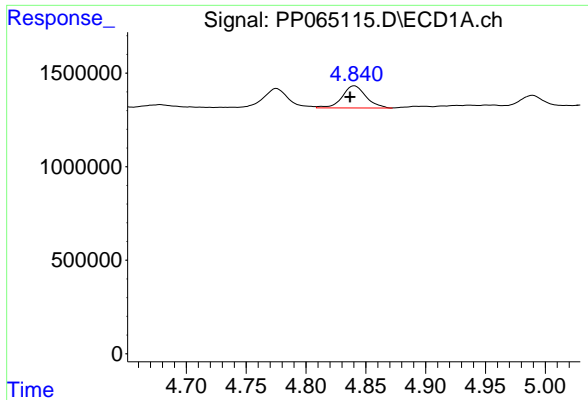
R.T.: 4.840 min  
 Delta R.T.: 0.003 min  
 Response: 1631384  
 Conc: 35.81 ng/ml



#10 AR-1221-3

R.T.: 4.136 min  
 Delta R.T.: 0.000 min  
 Response: 1479697  
 Conc: 33.46 ng/ml

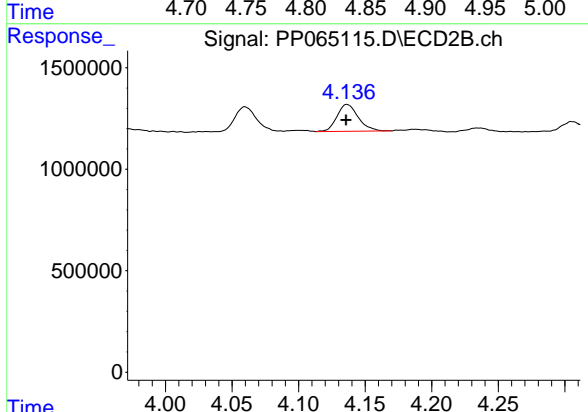




#11 AR-1232-1

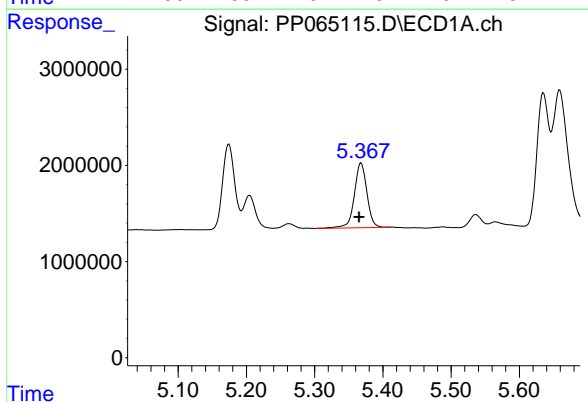
R.T.: 4.840 min  
 Delta R.T.: 0.004 min  
 Response: 1631384  
 Conc: 43.31 ng/ml

Instrument :  
 ECD\_P  
 ClientSampleId :  
 ICVPP052124



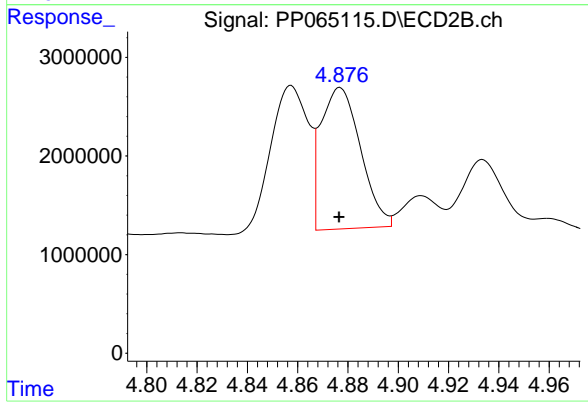
#11 AR-1232-1

R.T.: 4.136 min  
 Delta R.T.: 0.000 min  
 Response: 1479697  
 Conc: 40.09 ng/ml



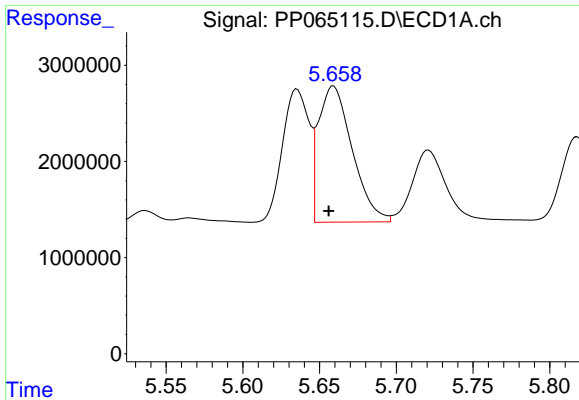
#12 AR-1232-2

R.T.: 5.368 min  
 Delta R.T.: 0.003 min  
 Response: 8658222  
 Conc: 406.46 ng/ml



#12 AR-1232-2

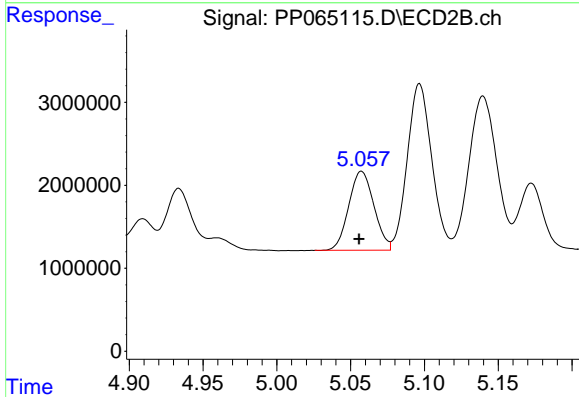
R.T.: 4.877 min  
 Delta R.T.: 0.000 min  
 Response: 15685798  
 Conc: 480.65 ng/ml



#13 AR-1232-3

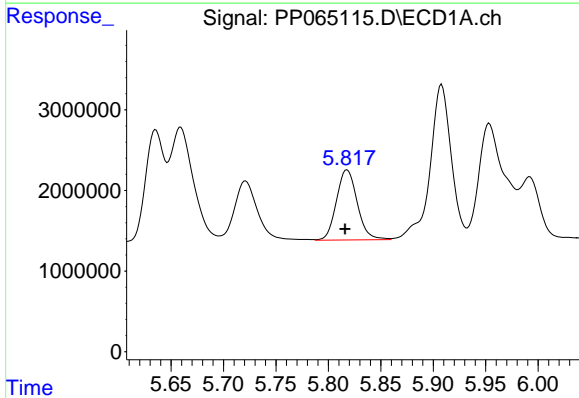
R.T.: 5.659 min  
 Delta R.T.: 0.003 min  
 Response: 21673386  
 Conc: 595.25 ng/ml

Instrument :  
 ECD\_P  
 ClientSampleId :  
 ICVPP052124



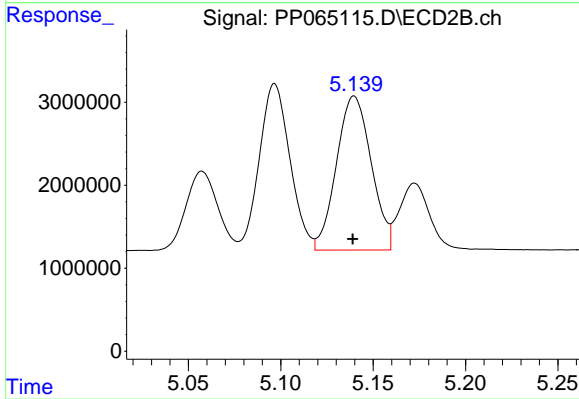
#13 AR-1232-3

R.T.: 5.057 min  
 Delta R.T.: 0.002 min  
 Response: 11328532  
 Conc: 642.76 ng/ml



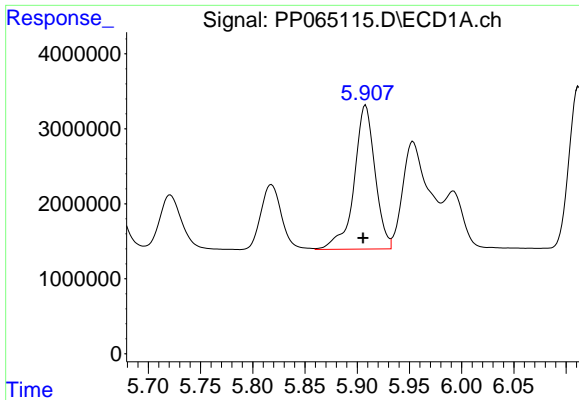
#14 AR-1232-4

R.T.: 5.818 min  
 Delta R.T.: 0.002 min  
 Response: 12037892  
 Conc: 651.71 ng/ml



#14 AR-1232-4

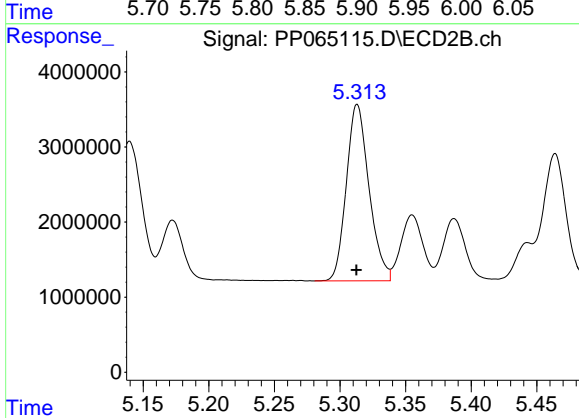
R.T.: 5.140 min  
 Delta R.T.: 0.000 min  
 Response: 24317281  
 Conc: 1450.22 ng/ml



#15 AR-1232-5

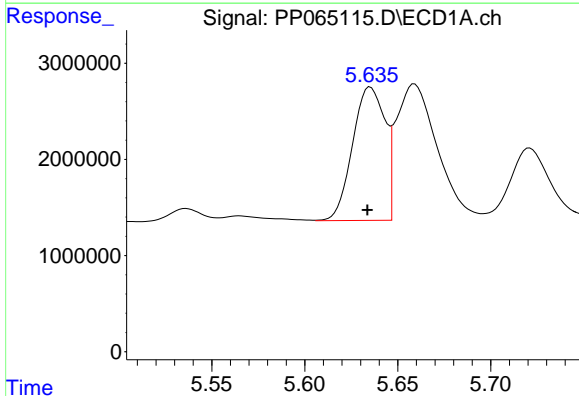
R.T.: 5.908 min  
 Delta R.T.: 0.002 min  
 Response: 26782968  
 Conc: 1750.23 ng/ml

Instrument :  
 ECD\_P  
 ClientSampleId :  
 ICVPP052124



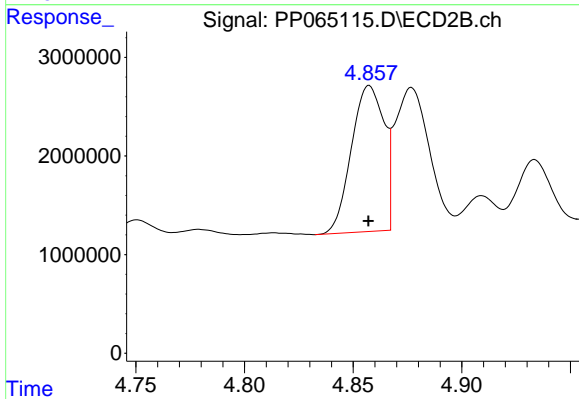
#15 AR-1232-5

R.T.: 5.313 min  
 Delta R.T.: 0.000 min  
 Response: 28307617  
 Conc: 1567.53 ng/ml



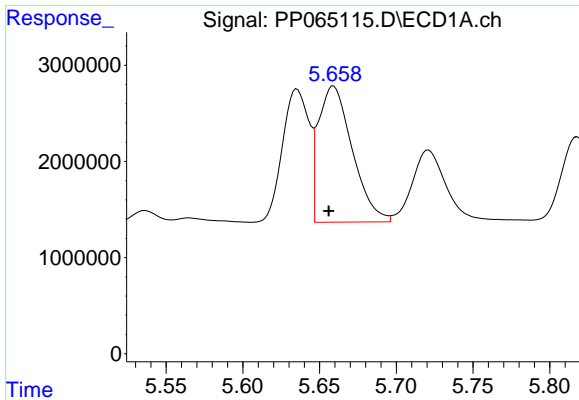
#16 AR-1242-1

R.T.: 5.635 min  
 Delta R.T.: 0.002 min  
 Response: 16786633  
 Conc: 406.76 ng/ml



#16 AR-1242-1

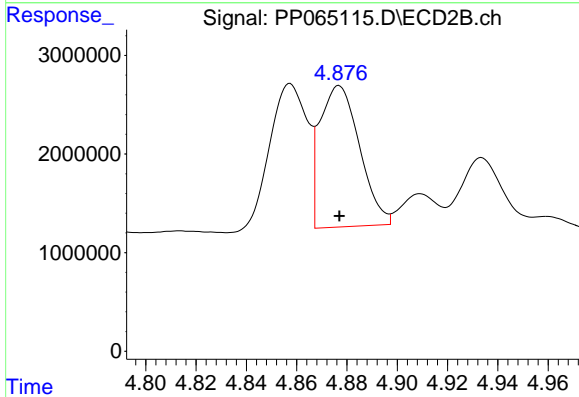
R.T.: 4.857 min  
 Delta R.T.: 0.000 min  
 Response: 15433070  
 Conc: 383.98 ng/ml



#17 AR-1242-2

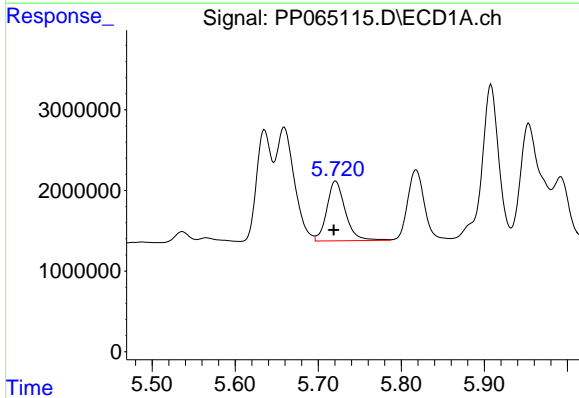
R.T.: 5.659 min  
 Delta R.T.: 0.003 min  
 Response: 21673386  
 Conc: 335.99 ng/ml

Instrument :  
 ECD\_P  
 ClientSampleId :  
 ICVPP052124



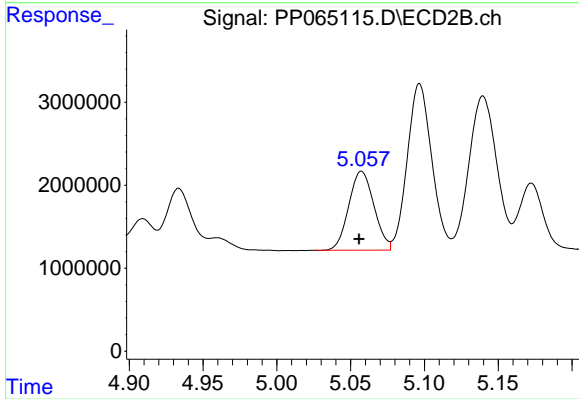
#17 AR-1242-2

R.T.: 4.877 min  
 Delta R.T.: 0.000 min  
 Response: 15685798  
 Conc: 277.65 ng/ml



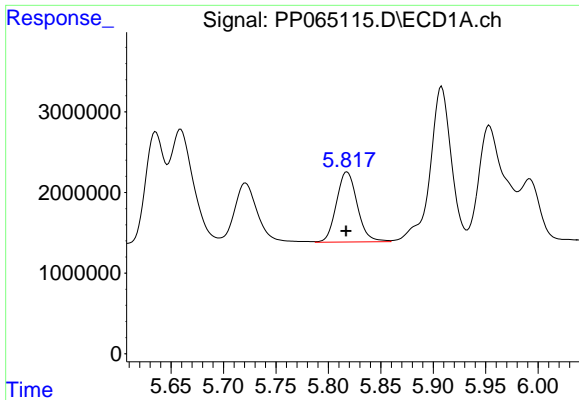
#18 AR-1242-3

R.T.: 5.721 min  
 Delta R.T.: 0.002 min  
 Response: 11459842  
 Conc: 273.77 ng/ml



#18 AR-1242-3

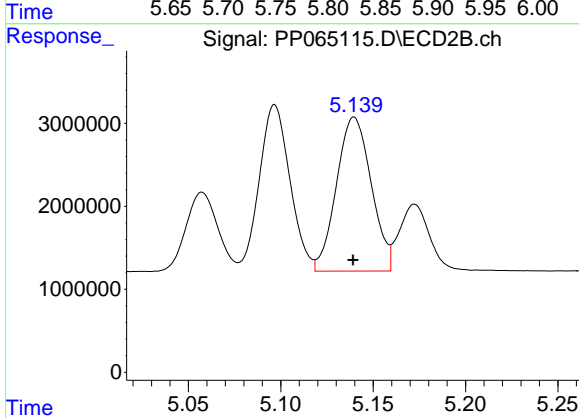
R.T.: 5.057 min  
 Delta R.T.: 0.002 min  
 Response: 11328532  
 Conc: 368.45 ng/ml



#19 AR-1242-4

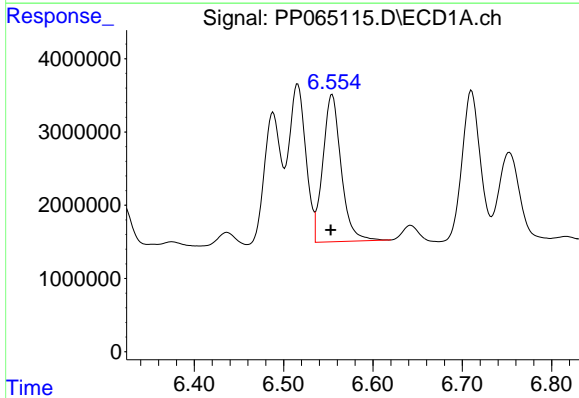
R.T.: 5.818 min  
 Delta R.T.: 0.001 min  
 Response: 12037892  
 Conc: 366.70 ng/ml

Instrument :  
 ECD\_P  
 ClientSampleId :  
 ICVPP052124



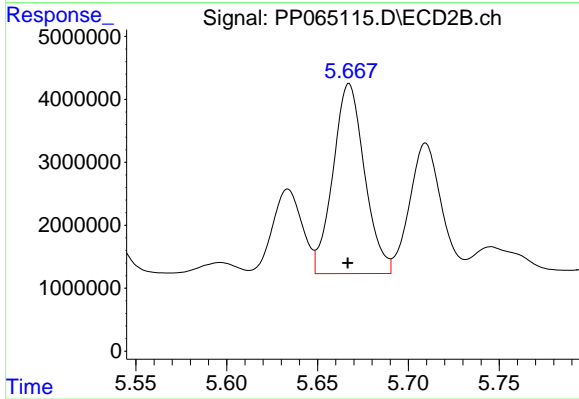
#19 AR-1242-4

R.T.: 5.140 min  
 Delta R.T.: 0.000 min  
 Response: 24317281  
 Conc: 749.82 ng/ml



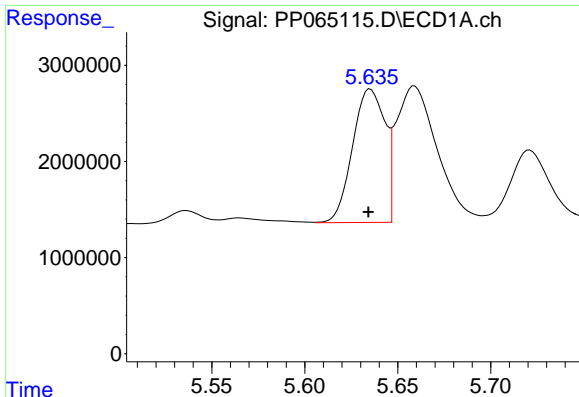
#20 AR-1242-5

R.T.: 6.554 min  
 Delta R.T.: 0.002 min  
 Response: 28603046  
 Conc: 899.50 ng/ml



#20 AR-1242-5

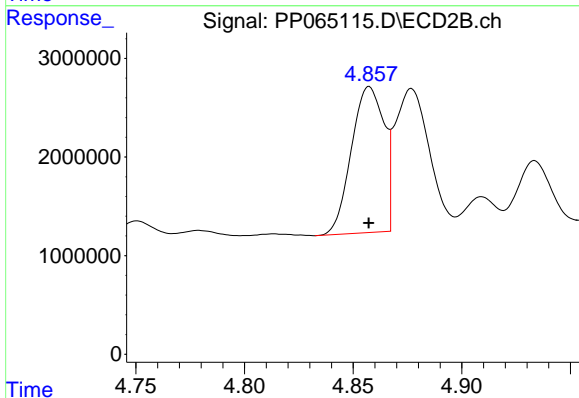
R.T.: 5.667 min  
 Delta R.T.: 0.000 min  
 Response: 36424180  
 Conc: 1003.17 ng/ml



#21 AR-1248-1

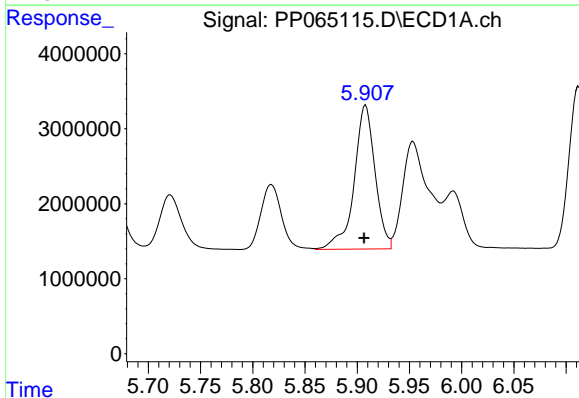
R.T.: 5.635 min  
 Delta R.T.: 0.001 min  
 Response: 16786633  
 Conc: 505.77 ng/ml

Instrument :  
 ECD\_P  
 ClientSampleId :  
 ICVPP052124



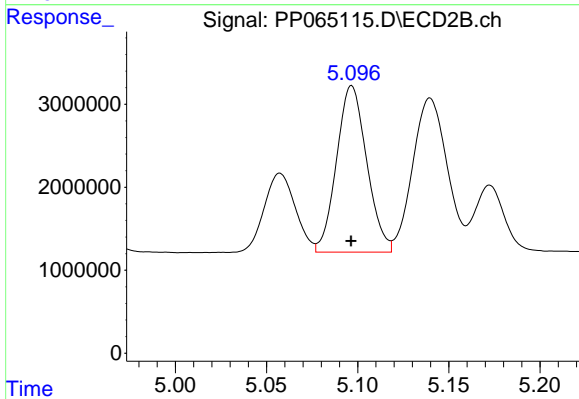
#21 AR-1248-1

R.T.: 4.857 min  
 Delta R.T.: 0.000 min  
 Response: 15433070  
 Conc: 512.05 ng/ml



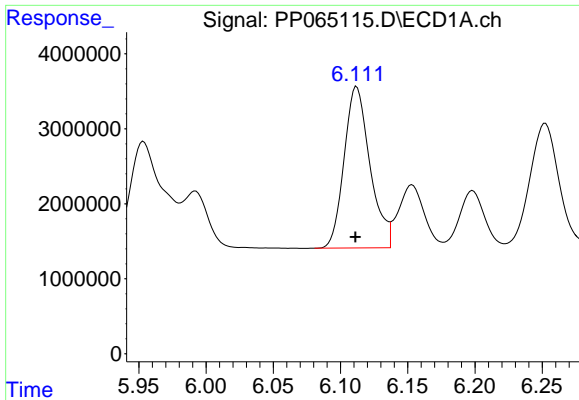
#22 AR-1248-2

R.T.: 5.908 min  
 Delta R.T.: 0.001 min  
 Response: 26782968  
 Conc: 526.27 ng/ml



#22 AR-1248-2

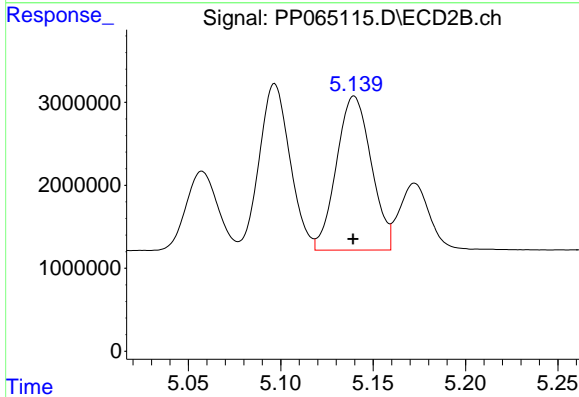
R.T.: 5.097 min  
 Delta R.T.: 0.000 min  
 Response: 23160849  
 Conc: 509.49 ng/ml



#23 AR-1248-3

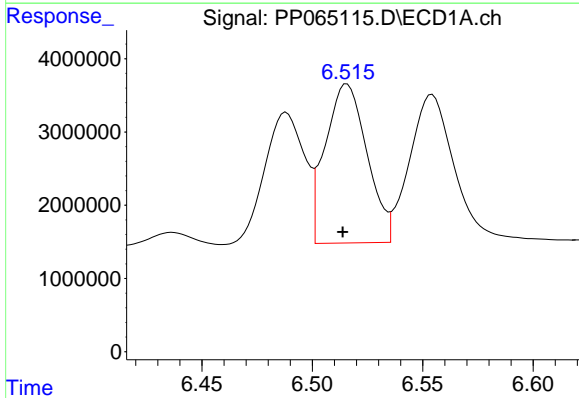
R.T.: 6.112 min  
 Delta R.T.: 0.001 min  
 Response: 28815532  
 Conc: 528.06 ng/ml

Instrument :  
 ECD\_P  
 ClientSampleId :  
 ICVPP052124



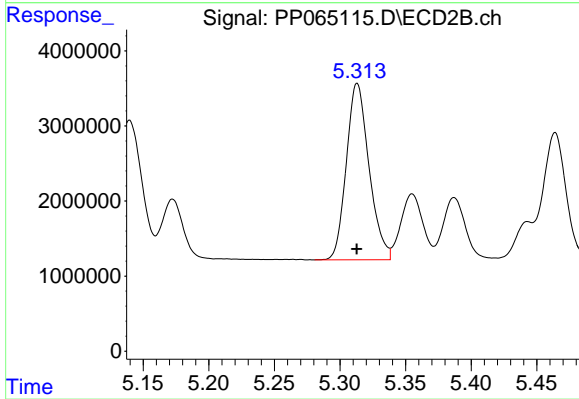
#23 AR-1248-3

R.T.: 5.140 min  
 Delta R.T.: 0.000 min  
 Response: 24317281  
 Conc: 511.30 ng/ml



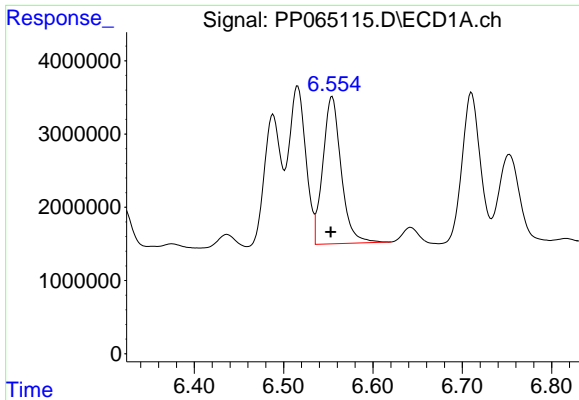
#24 AR-1248-4

R.T.: 6.516 min  
 Delta R.T.: 0.002 min  
 Response: 28583999  
 Conc: 522.01 ng/ml



#24 AR-1248-4

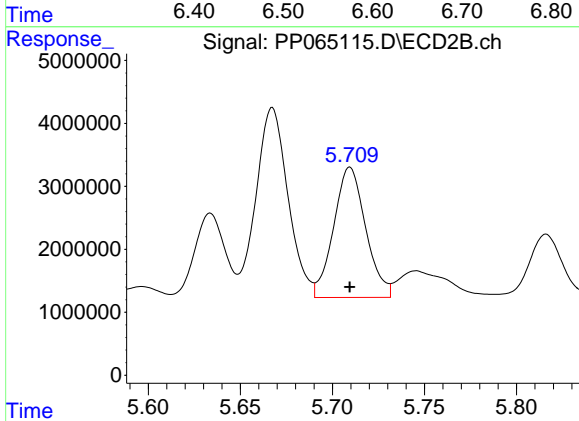
R.T.: 5.313 min  
 Delta R.T.: 0.000 min  
 Response: 28307617  
 Conc: 512.66 ng/ml



#25 AR-1248-5

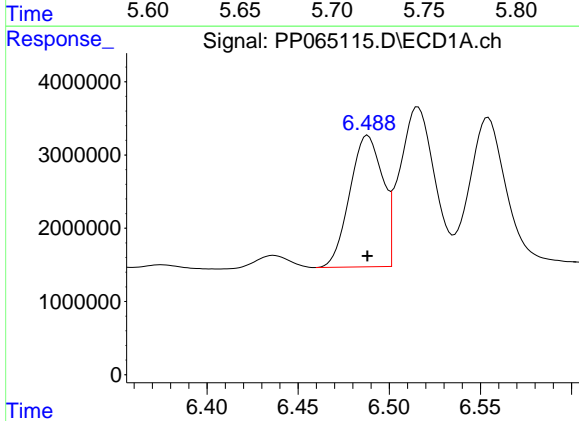
R.T.: 6.554 min  
 Delta R.T.: 0.001 min  
 Response: 28603046  
 Conc: 531.27 ng/ml

Instrument :  
 ECD\_P  
 ClientSampleId :  
 ICVPP052124



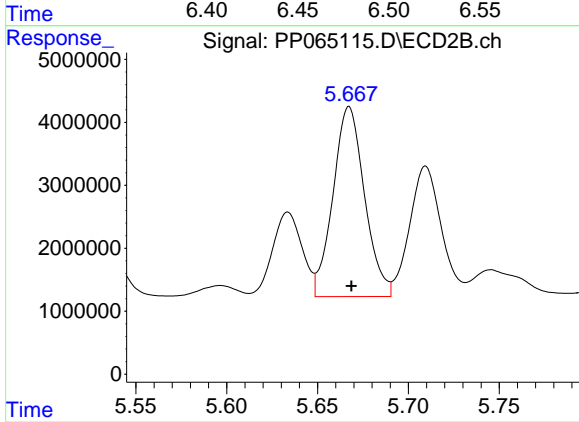
#25 AR-1248-5

R.T.: 5.710 min  
 Delta R.T.: 0.000 min  
 Response: 25085882  
 Conc: 522.42 ng/ml



#26 AR-1254-1

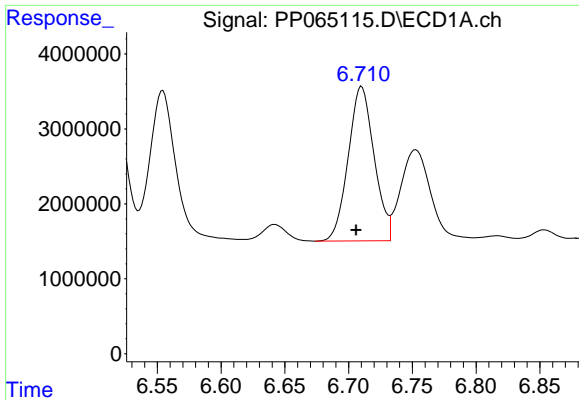
R.T.: 6.488 min  
 Delta R.T.: 0.000 min  
 Response: 22502351  
 Conc: 364.46 ng/ml



#26 AR-1254-1

R.T.: 5.667 min  
 Delta R.T.: -0.001 min  
 Response: 36424180  
 Conc: 456.57 ng/ml

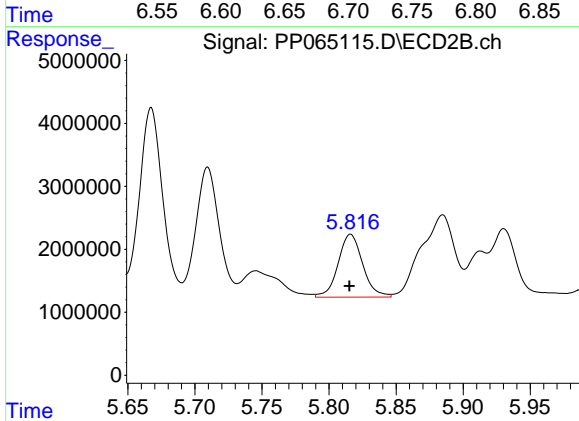




#27 AR-1254-2

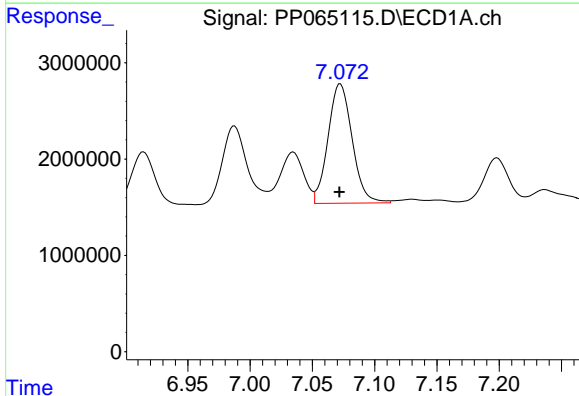
R.T.: 6.710 min  
 Delta R.T.: 0.004 min  
 Response: 29115078  
 Conc: 317.36 ng/ml

Instrument :  
 ECD\_P  
 ClientSampleId :  
 ICVPP052124



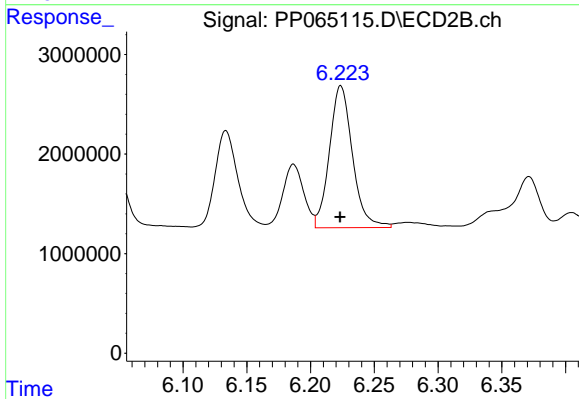
#27 AR-1254-2

R.T.: 5.816 min  
 Delta R.T.: 0.000 min  
 Response: 12717309  
 Conc: 180.34 ng/ml



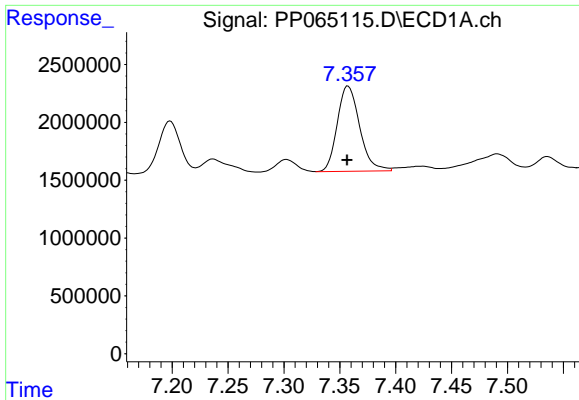
#28 AR-1254-3

R.T.: 7.072 min  
 Delta R.T.: 0.000 min  
 Response: 16717086  
 Conc: 179.71 ng/ml



#28 AR-1254-3

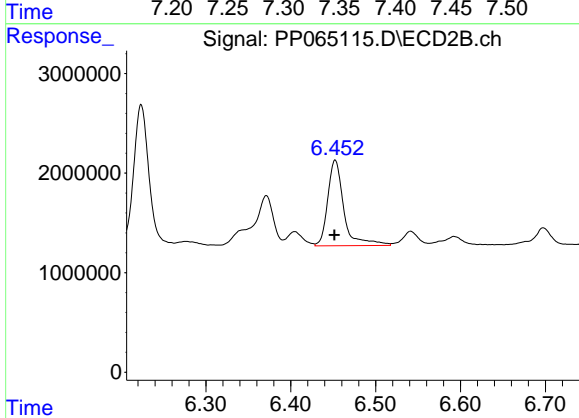
R.T.: 6.224 min  
 Delta R.T.: 0.000 min  
 Response: 17965739  
 Conc: 163.01 ng/ml



#29 AR-1254-4

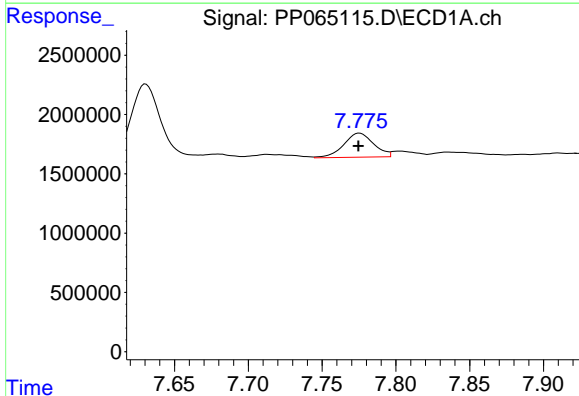
R.T.: 7.357 min  
 Delta R.T.: 0.000 min  
 Response: 10281475  
 Conc: 169.60 ng/ml

Instrument :  
 ECD\_P  
 ClientSampleId :  
 ICVPP052124



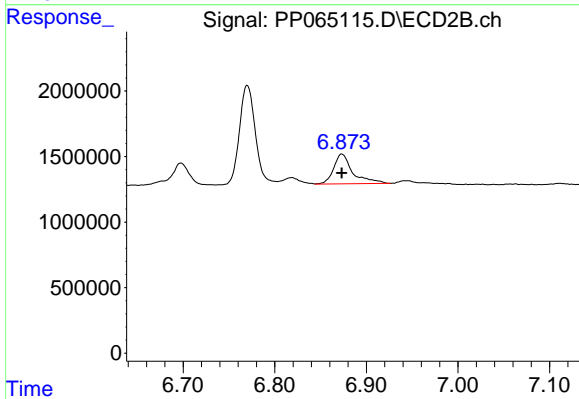
#29 AR-1254-4

R.T.: 6.452 min  
 Delta R.T.: 0.001 min  
 Response: 11367639  
 Conc: 201.36 ng/ml



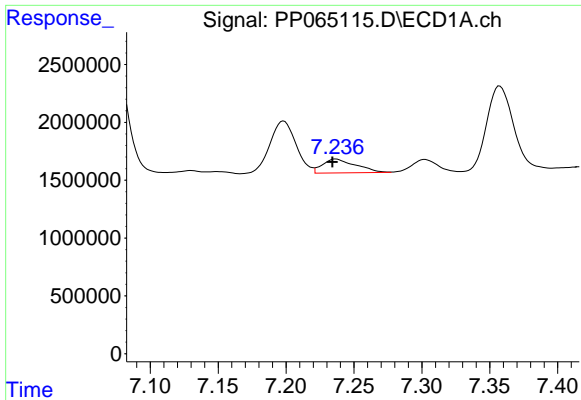
#30 AR-1254-5

R.T.: 7.775 min  
 Delta R.T.: 0.000 min  
 Response: 2866115  
 Conc: 40.80 ng/ml



#30 AR-1254-5

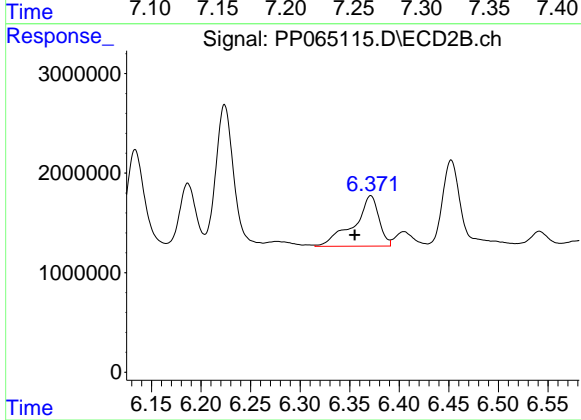
R.T.: 6.873 min  
 Delta R.T.: 0.000 min  
 Response: 3288979  
 Conc: 35.30 ng/ml



#31 AR-1260-1

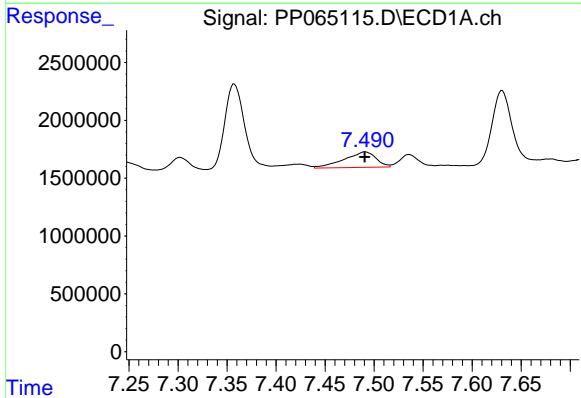
R.T.: 7.237 min  
 Delta R.T.: 0.003 min  
 Response: 2064065  
 Conc: 29.91 ng/ml

Instrument :  
 ECD\_P  
 ClientSampleId :  
 ICVPP052124



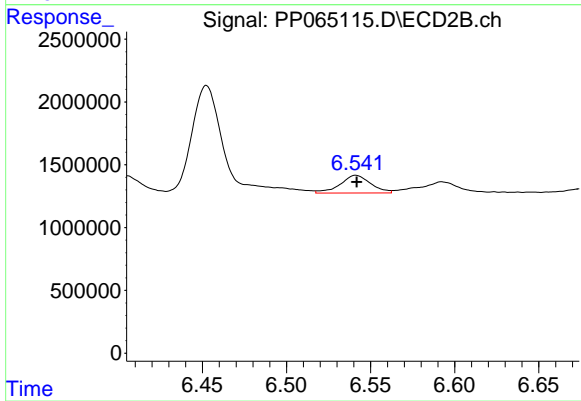
#31 AR-1260-1

R.T.: 6.371 min  
 Delta R.T.: 0.016 min  
 Response: 8916195  
 Conc: 118.72 ng/ml



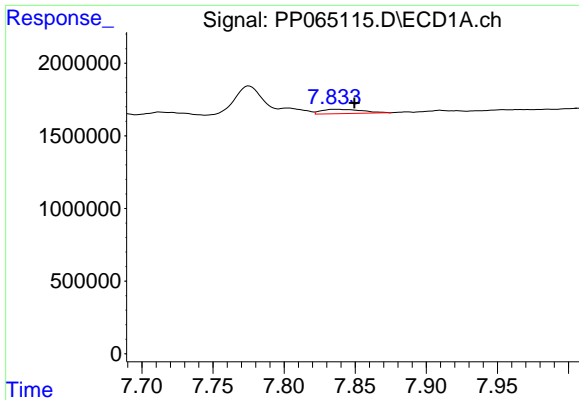
#32 AR-1260-2

R.T.: 7.491 min  
 Delta R.T.: 0.000 min  
 Response: 3016535  
 Conc: 39.06 ng/ml



#32 AR-1260-2

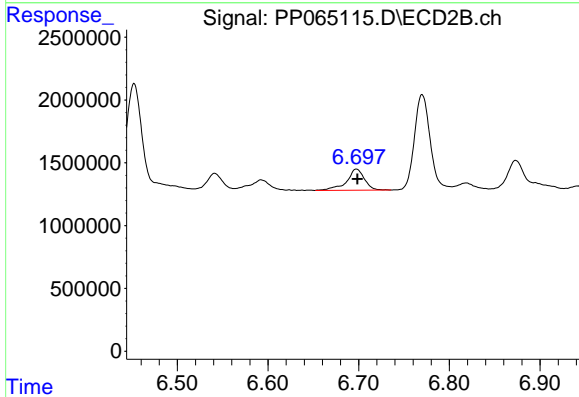
R.T.: 6.541 min  
 Delta R.T.: 0.000 min  
 Response: 1785598  
 Conc: 20.63 ng/ml



#33 AR-1260-3

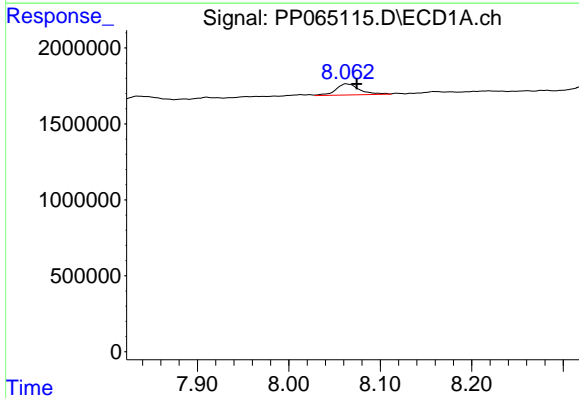
R.T.: 7.835 min  
 Delta R.T.: -0.014 min  
 Response: 604255  
 Conc: 10.09 ng/ml

Instrument :  
 ECD\_P  
 ClientSampleId :  
 ICVPP052124



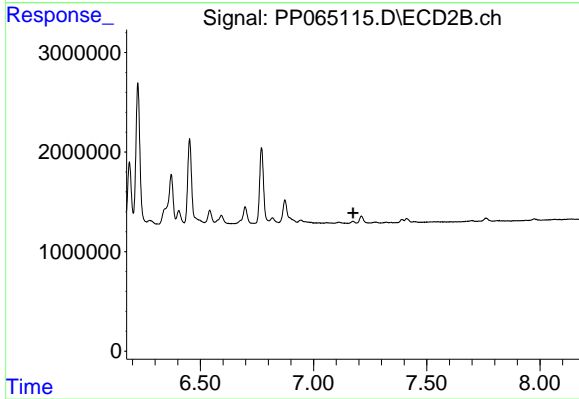
#33 AR-1260-3

R.T.: 6.698 min  
 Delta R.T.: -0.001 min  
 Response: 2307732  
 Conc: 27.10 ng/ml



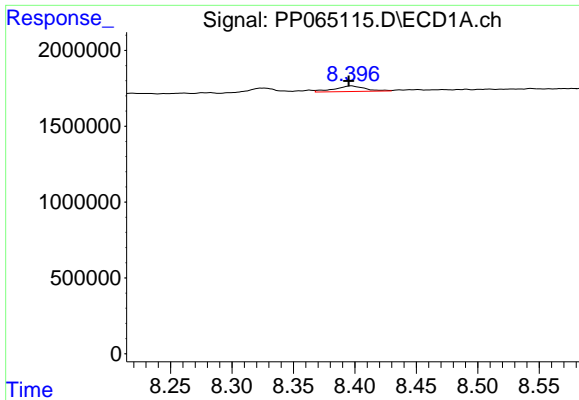
#34 AR-1260-4

R.T.: 8.063 min  
 Delta R.T.: -0.012 min  
 Response: 1316843  
 Conc: 19.56 ng/ml



#34 AR-1260-4

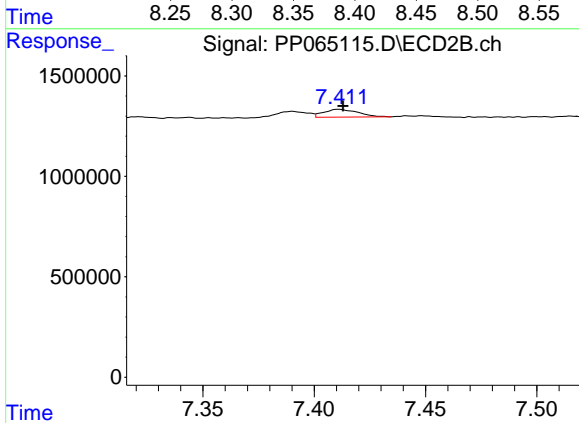
R.T.: 0.000 min  
 Exp R.T.: 7.174 min  
 Response: 0  
 Conc: N.D.



#35 AR-1260-5

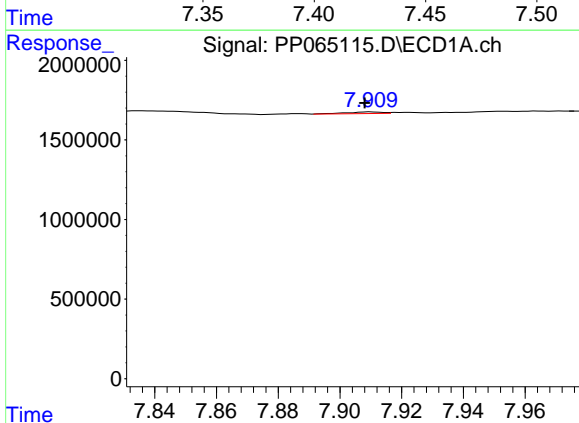
R.T.: 8.397 min  
 Delta R.T.: 0.002 min  
 Response: 650884  
 Conc: 5.49 ng/ml

Instrument :  
 ECD\_P  
 ClientSampleId :  
 ICVPP052124



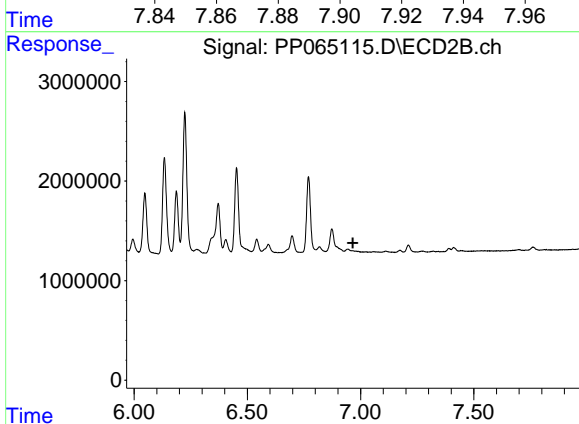
#35 AR-1260-5

R.T.: 7.411 min  
 Delta R.T.: -0.002 min  
 Response: 419216  
 Conc: 3.17 ng/ml



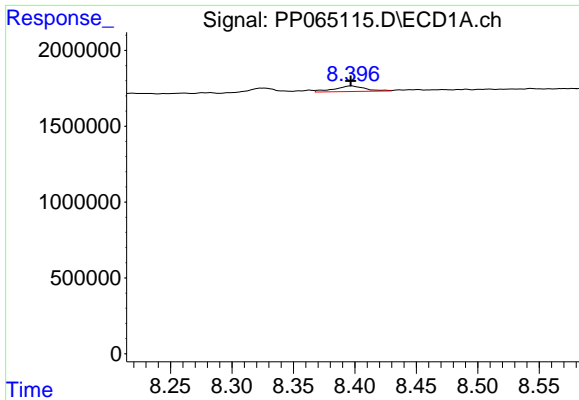
#36 AR-1262-1

R.T.: 7.910 min  
 Delta R.T.: 0.002 min  
 Response: 81991  
 Conc: 2.13 ng/ml



#36 AR-1262-1

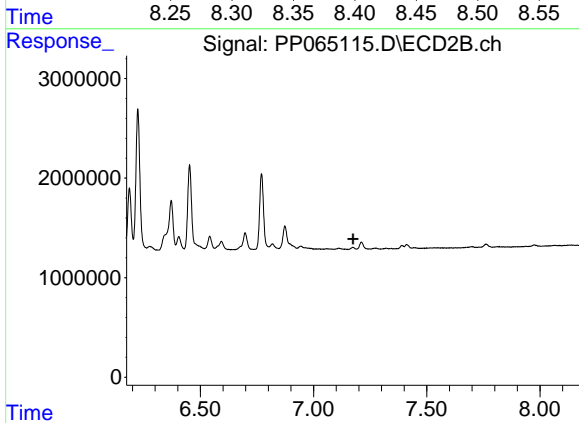
R.T.: 0.000 min  
 Exp R.T. : 6.966 min  
 Response: 0  
 Conc: N.D.



#37 AR-1262-2

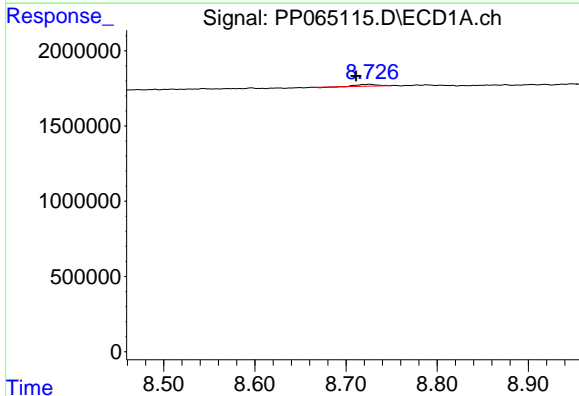
R.T.: 8.397 min  
 Delta R.T.: 0.000 min  
 Response: 650884  
 Conc: 4.51 ng/ml

Instrument :  
 ECD\_P  
 ClientSampleId :  
 ICVPP052124



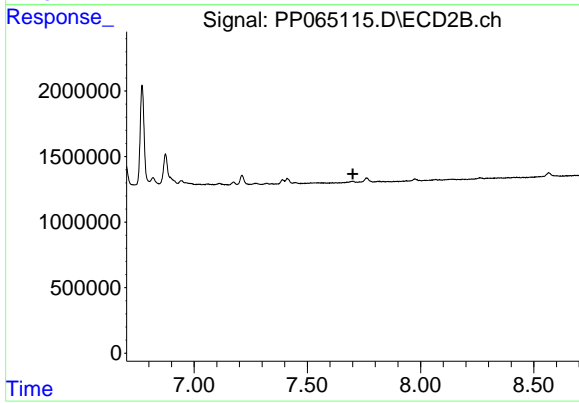
#37 AR-1262-2

R.T.: 0.000 min  
 Exp R.T. : 7.174 min  
 Response: 0  
 Conc: N.D.



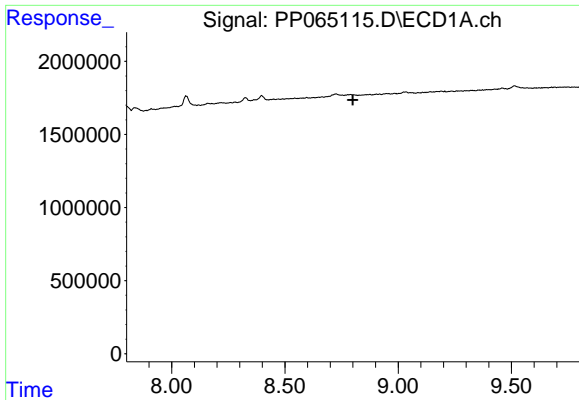
#38 AR-1262-3

R.T.: 8.726 min  
 Delta R.T.: 0.015 min  
 Response: 168139  
 Conc: 1.61 ng/ml



#38 AR-1262-3

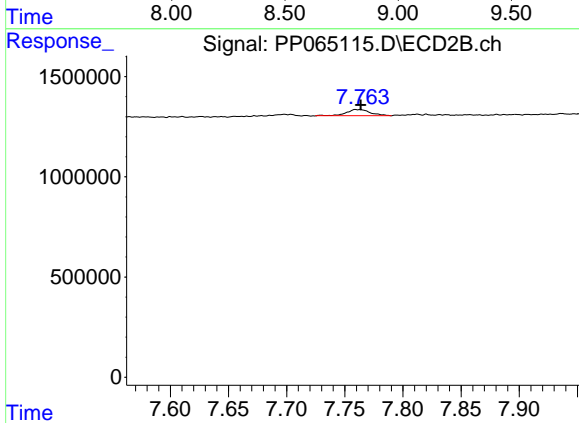
R.T.: 0.000 min  
 Exp R.T. : 7.701 min  
 Response: 0  
 Conc: N.D.



#39 AR-1262-4

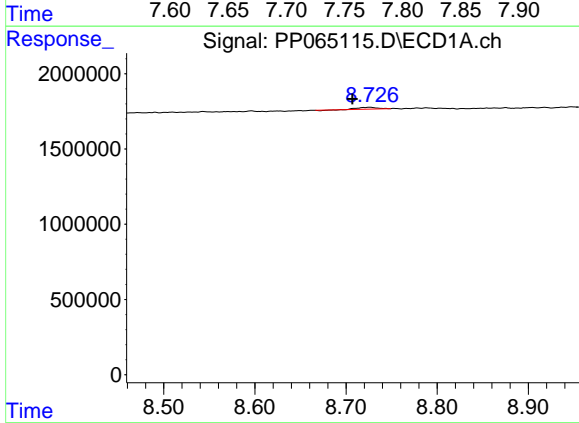
R.T.: 0.000 min  
 Exp R.T.: 8.799 min  
 Response: 0  
 Conc: N.D.

Instrument : ECD\_P  
 ClientSampleId : ICVPP052124



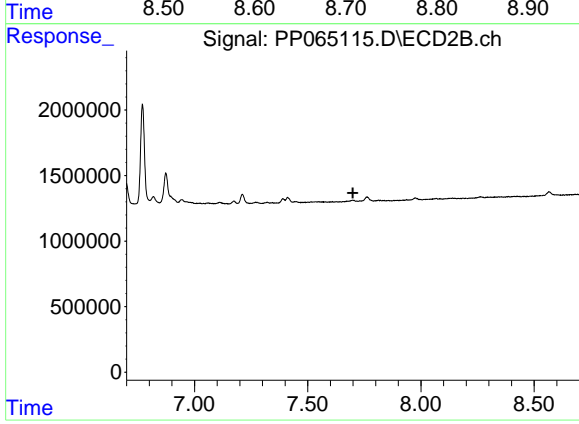
#39 AR-1262-4

R.T.: 7.763 min  
 Delta R.T.: 0.000 min  
 Response: 438243  
 Conc: 3.60 ng/ml



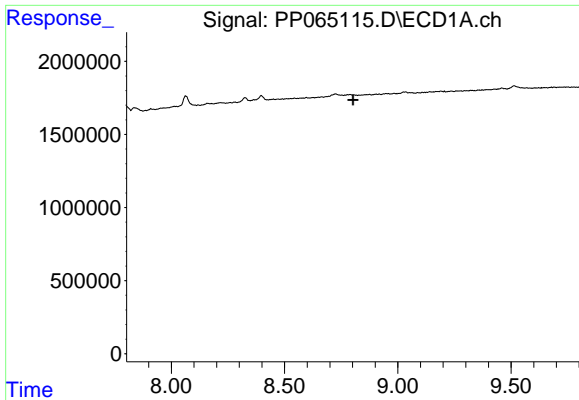
#41 AR-1268-1

R.T.: 8.726 min  
 Delta R.T.: 0.019 min  
 Response: 168139  
 Conc: 0.91 ng/ml



#41 AR-1268-1

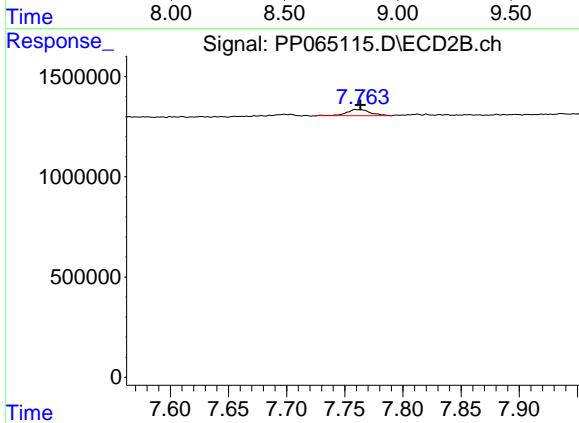
R.T.: 0.000 min  
 Exp R.T.: 7.700 min  
 Response: 0  
 Conc: N.D.



#42 AR-1268-2

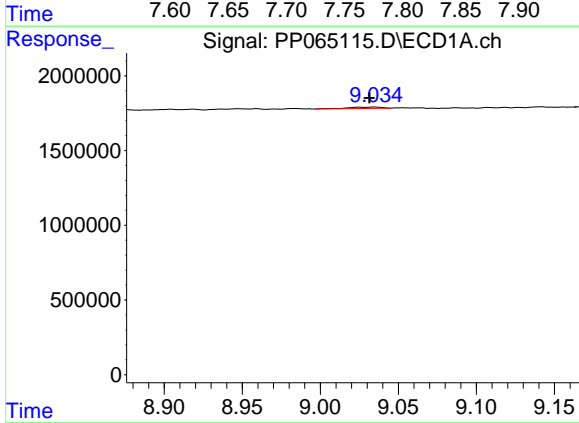
R.T.: 0.000 min  
 Exp R.T.: 8.802 min  
 Response: 0  
 Conc: N.D.

Instrument : ECD\_P  
 ClientSampleId : ICVPP052124



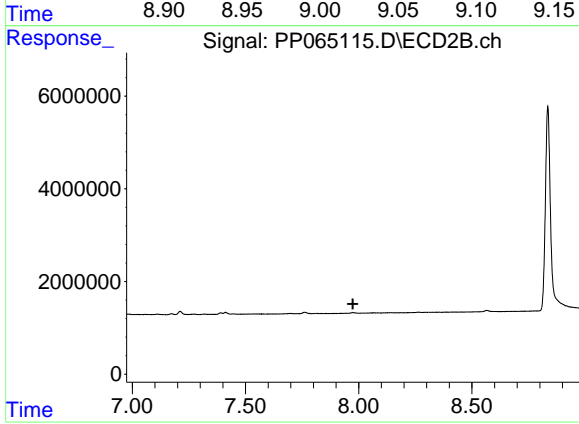
#42 AR-1268-2

R.T.: 7.763 min  
 Delta R.T.: 0.000 min  
 Response: 438243  
 Conc: 2.53 ng/ml



#43 AR-1268-3

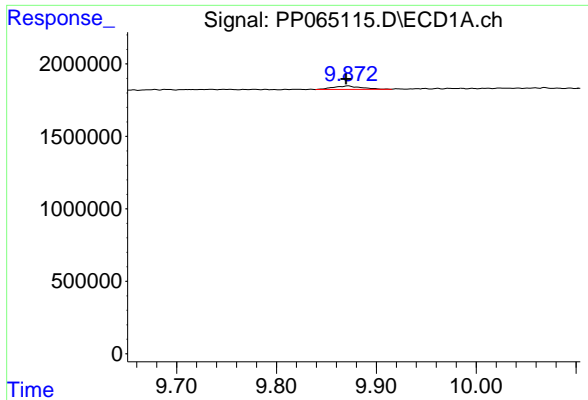
R.T.: 9.035 min  
 Delta R.T.: 0.003 min  
 Response: 131762  
 Conc: 0.87 ng/ml



#43 AR-1268-3

R.T.: 0.000 min  
 Exp R.T.: 7.975 min  
 Response: 0  
 Conc: N.D.

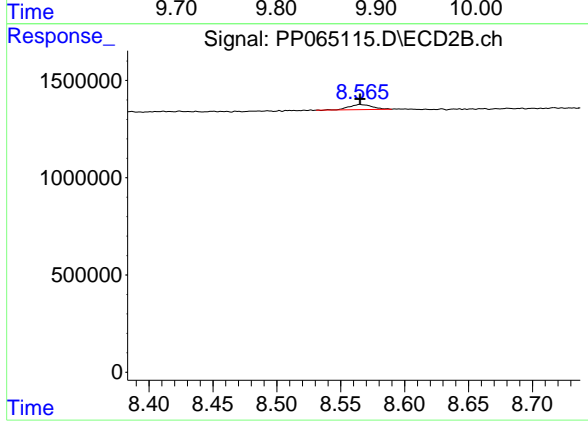




#45 AR-1268-5

R.T.: 9.872 min  
 Delta R.T.: 0.002 min  
 Response: 471053  
 Conc: 1.04 ng/ml

Instrument :  
 ECD\_P  
 ClientSampleId :  
 ICVPP052124



#45 AR-1268-5

R.T.: 8.565 min  
 Delta R.T.: 0.000 min  
 Response: 327704  
 Conc: 0.69 ng/ml