

Data Path : Z:\pestpcbsrv\HPCHEM1\ECD_P\Data\PP052124\
 Data File : PP065134.D
 Signal(s) : Signal #1: ECD1A.ch Signal #2: ECD2B.ch
 Acq On : 22 May 2024 00:09
 Operator : YP\AJ
 Sample : AR1254CCC500
 Misc :
 ALS Vial : 39 Sample Multiplier: 1

Instrument :
 ECD_P
 ClientSampleId :
 AR1254CCC500

Integration File signal 1: autoint1.e
 Integration File signal 2: autoint2.e
 Quant Time: May 22 01:26:13 2024
 Quant Method : Z:\pestpcbsrv\HPCHEM1\ECD_P\methods\PP052124.M
 Quant Title : GC EXTRACTABLES
 QLast Update : Tue May 21 18:19:41 2024
 Response via : Initial Calibration
 Integrator: ChemStation

Volume Inj. : 2 µl
 Signal #1 Phase : ZB-MR2 Signal #2 Phase: ZB-MR2
 Signal #1 Info : 30Mx0.32mmx 0.50µ Signal #2 Info : 30M x 0.32mm x 0.25µm

Compound	RT#1	RT#2	Resp#1	Resp#2	ng/ml	ng/ml

System Monitoring Compounds						
1) SA Tetrachlo...	4.468	3.754	82530129	77057687	52.290	50.759
2) SA Decachlor...	10.204	8.831	76006070	70555660	58.453	53.529
Target Compounds						
3) L1 AR-1016-1	5.632	4.856	832119	787941	17.511	16.714
4) L1 AR-1016-2	5.657	4.875	1086491	561143	14.465	8.350 #
5) L1 AR-1016-3	5.717	5.056	530744	511566	10.935	13.951 #
6) L1 AR-1016-4	5.816	5.095	451795	17675559	11.943	569.198 #
7) L1 AR-1016-5	6.109	5.311	11306825	11463505	297.298	286.566
9) L2 AR-1221-2	4.773	4.059	1425306	1296747	94.664	86.294
10) L2 AR-1221-3	4.837	4.135	478605	323713	10.506	7.319 #
11) L3 AR-1232-1	4.837	4.135	478605	323713	12.706	8.771 #
12) L3 AR-1232-2	5.364	4.875	479369	561143	22.504	17.195
13) L3 AR-1232-3	5.657	5.056	1086491	511566	29.840	29.025
14) L3 AR-1232-4	5.816	5.137	451795	5578393	24.459	332.681 #
15) L3 AR-1232-5	5.905	5.311	19036073	11463505	1243.980	634.790 #
16) L4 AR-1242-1	5.632	4.856	832119	787941	20.163	19.604
17) L4 AR-1242-2	5.657	4.875	1086491	561143	16.843	9.933 #
18) L4 AR-1242-3	5.717	5.056	530744	511566	12.679	16.638 #
19) L4 AR-1242-4	5.816	5.137	451795	5578393	13.763	172.009 #
20) L4 AR-1242-5	6.554	5.667	10576897	40463233	332.619	1114.411 #
21) L5 AR-1248-1	5.632	4.856	832119	787941	25.071	26.143
22) L5 AR-1248-2	5.905	5.095	19036073	17675559	374.048	388.828
23) L5 AR-1248-3	6.109	5.137	11306825	5578393	207.205	117.292 #
24) L5 AR-1248-4	6.511	5.311	15202154	11463505	277.625	207.608 #
25) L5 AR-1248-5	6.554	5.707	10576897	5284955	196.453	110.061 #
26) L6 AR-1254-1	6.486	5.667	32079248	40463233	519.575	507.197
27) L6 AR-1254-2	6.704	5.814	47516113	35531752	517.932	503.857
28) L6 AR-1254-3	7.069	6.222	49330452	56473250	530.310	512.408
29) L6 AR-1254-4	7.353	6.450	34381592	32108445	567.153	568.752
30) L6 AR-1254-5	7.773	6.871	45548834	49168627	648.388	527.674
31) L7 AR-1260-1	7.233	6.353	21196661	28673757	307.111	381.779
32) L7 AR-1260-2	7.489	6.540	23070565	23367233	298.724	269.986
33) L7 AR-1260-3	7.833	6.696	5841566	23711479	97.572	278.493 #
34) L7 AR-1260-4	8.059	7.171	15760982	2505023	234.127	37.377 #
35) L7 AR-1260-5	8.393	7.410	5966582	5959250	50.349	45.027
36) L8 AR-1262-1	7.905	6.942f	1521099	6225129	39.603	135.420 #
37) L8 AR-1262-2	8.393	7.171	5966582	2505023	41.319	28.404 #
38) L8 AR-1262-3	8.721	0.000	4743695	0	45.460	N.D. #
39) L8 AR-1262-4	0.000	7.758	0	5524216	N.D.	45.400 #
40) L8 AR-1262-5	9.452	0.000	197443	0	3.929	N.D. #
41) L9 AR-1268-1	8.721	0.000	4743695	0	25.623	N.D. #
42) L9 AR-1268-2	0.000	7.758	0	5524216	N.D.	31.950 #

Data Path : Z:\pestpcbsrv\HPCHEM1\ECD_P\Data\PP052124\
 Data File : PP065134.D
 Signal(s) : Signal #1: ECD1A.ch Signal #2: ECD2B.ch
 Acq On : 22 May 2024 00:09
 Operator : YP\AJ
 Sample : AR1254CCC500
 Misc :
 ALS Vial : 39 Sample Multiplier: 1

Instrument :
 ECD_P
ClientSampleId :
 AR1254CCC500

Integration File signal 1: autoint1.e
 Integration File signal 2: autoint2.e
 Quant Time: May 22 01:26:13 2024
 Quant Method : Z:\pestpcbsrv\HPCHEM1\ECD_P\methods\PP052124.M
 Quant Title : GC EXTRACTABLES
 QLast Update : Tue May 21 18:19:41 2024
 Response via : Initial Calibration
 Integrator: ChemStation

Volume Inj. : 2 µl
 Signal #1 Phase : ZB-MR1 Signal #2 Phase: ZB-MR2
 Signal #1 Info : 30Mx0.32mmx 0.50µ Signal #2 Info : 30M x 0.32mm x 0.25µm

	Compound	RT#1	RT#2	Resp#1	Resp#2	ng/ml	ng/ml	
43)	L9 AR-1268-3	9.024	0.000	268850	0	1.777	N.D.	#
44)	L9 AR-1268-4	9.452	0.000	197443	0	3.794	N.D.	#
45)	L9 AR-1268-5	9.864	8.562	486611	403680	1.074	0.852	

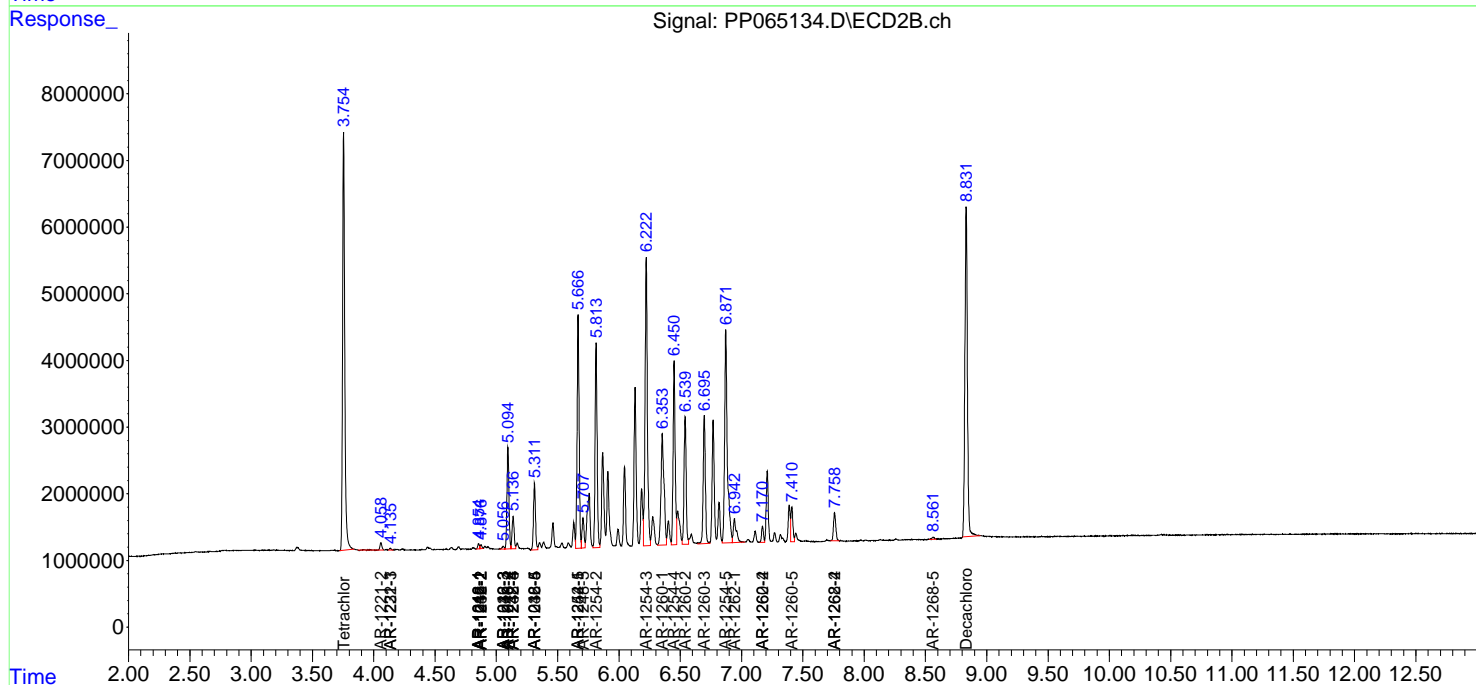
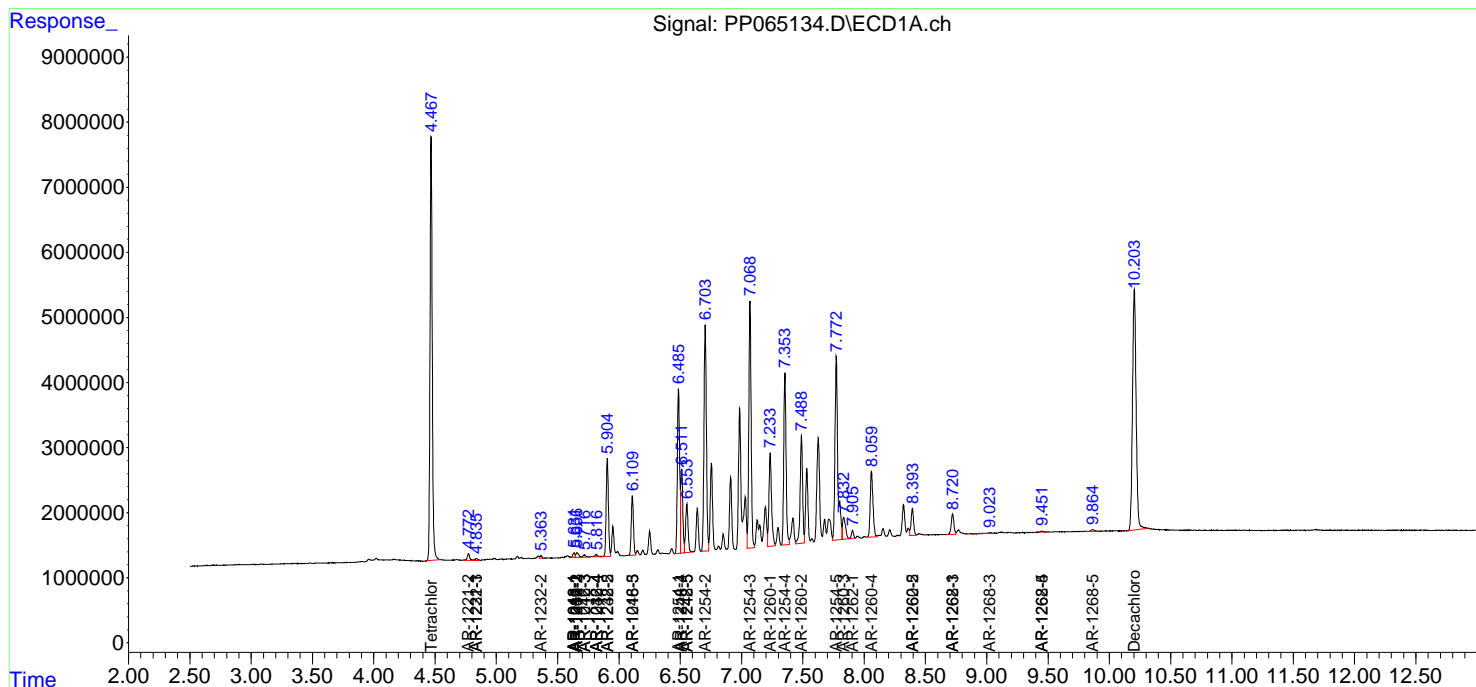
(f)=RT Delta > 1/2 Window (#)=Amounts differ by > 25% (m)=manual int.

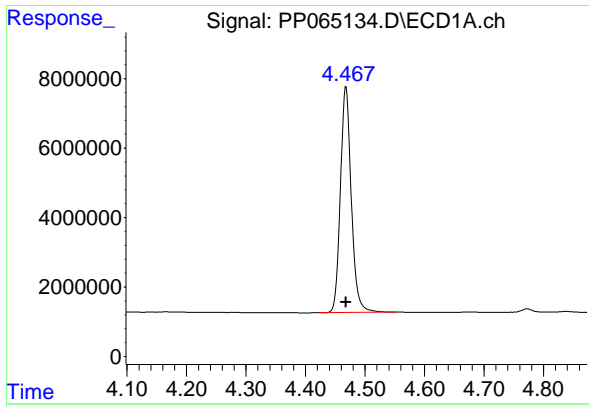
Data Path : Z:\pestpcbsrv\HPCHEM1\ECD_P\Data\PP052124\
 Data File : PP065134.D
 Signal(s) : Signal #1: ECD1A.ch Signal #2: ECD2B.ch
 Acq On : 22 May 2024 00:09
 Operator : YP\AJ
 Sample : AR1254CCC500
 Misc :
 ALS Vial : 39 Sample Multiplier: 1

Instrument :
 ECD_P
 ClientSampleId :
 AR1254CCC500

Integration File signal 1: autoint1.e
 Integration File signal 2: autoint2.e
 Quant Time: May 22 01:26:13 2024
 Quant Method : Z:\pestpcbsrv\HPCHEM1\ECD_P\methods\PP052124.M
 Quant Title : GC EXTRACTABLES
 QLast Update : Tue May 21 18:19:41 2024
 Response via : Initial Calibration
 Integrator: ChemStation

Volume Inj. : 2 µl
 Signal #1 Phase : ZB-MR1 Signal #2 Phase: ZB-MR2
 Signal #1 Info : 30Mx0.32mmx 0.50µm Signal #2 Info : 30M x 0.32mm x 0.25µm

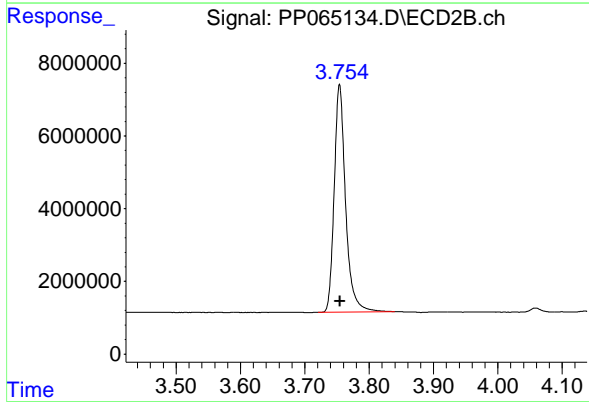




#1 Tetrachloro-m-xylene

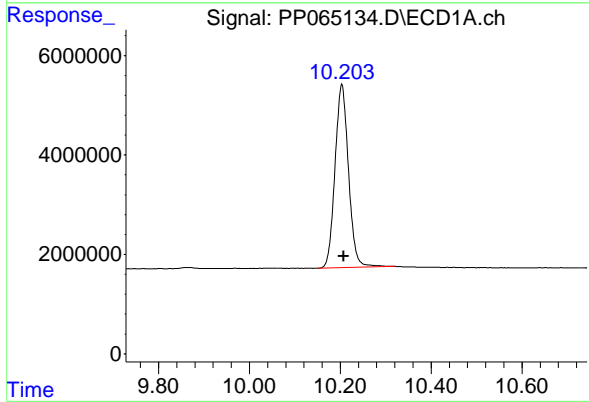
R.T.: 4.468 min
 Delta R.T.: 0.000 min
 Response: 82530129
 Conc: 52.29 ng/ml

Instrument :
 ECD_P
 ClientSampleId :
 AR1254CCC500



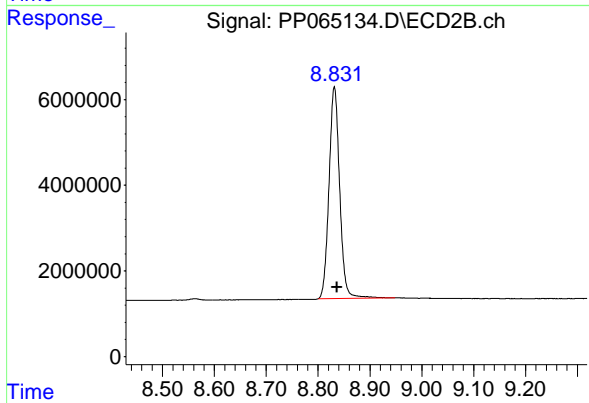
#1 Tetrachloro-m-xylene

R.T.: 3.754 min
 Delta R.T.: 0.000 min
 Response: 77057687
 Conc: 50.76 ng/ml



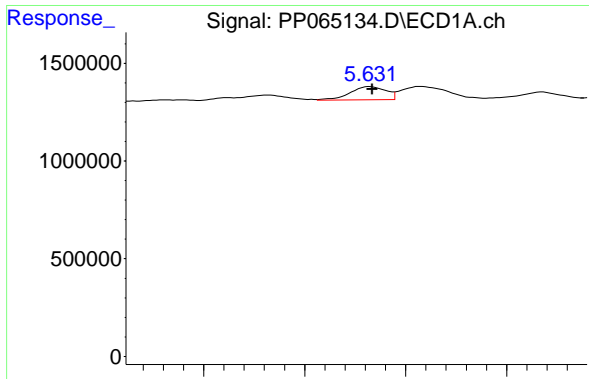
#2 Decachlorobiphenyl

R.T.: 10.204 min
 Delta R.T.: -0.004 min
 Response: 76006070
 Conc: 58.45 ng/ml



#2 Decachlorobiphenyl

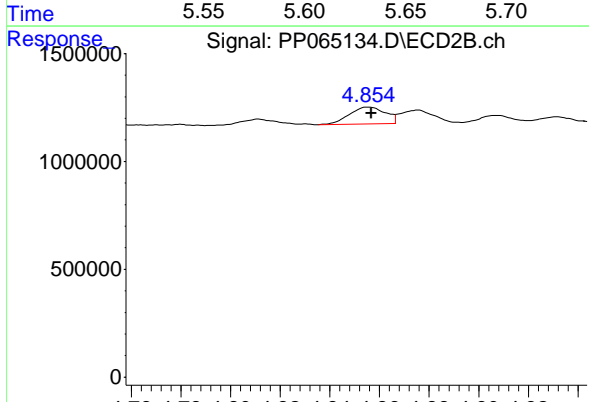
R.T.: 8.831 min
 Delta R.T.: -0.005 min
 Response: 70555660
 Conc: 53.53 ng/ml



#3 AR-1016-1

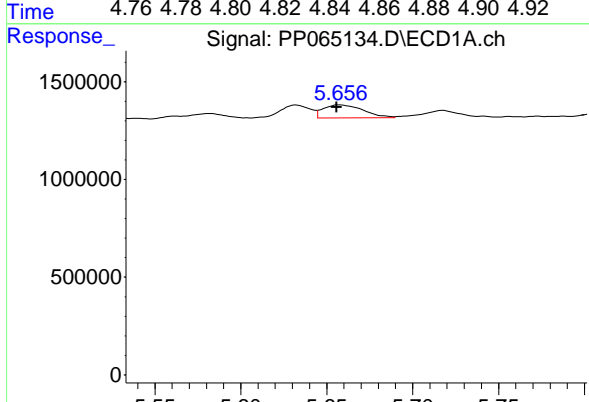
R.T.: 5.632 min
 Delta R.T.: -0.001 min
 Response: 832119
 Conc: 17.51 ng/ml

Instrument :
 ECD_P
 ClientSampleId :
 AR1254CCC500



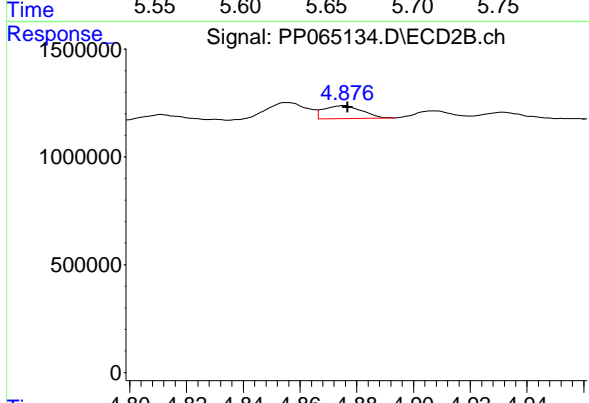
#3 AR-1016-1

R.T.: 4.856 min
 Delta R.T.: -0.001 min
 Response: 787941
 Conc: 16.71 ng/ml



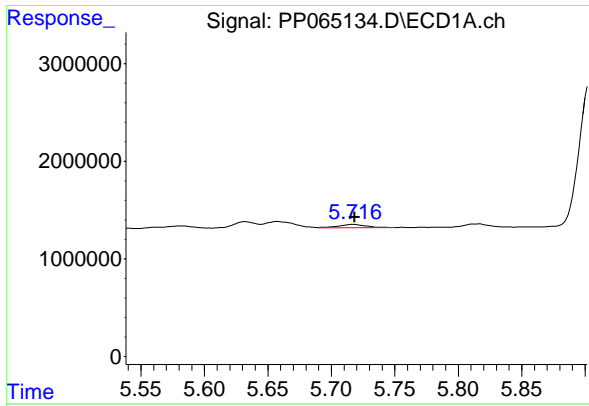
#4 AR-1016-2

R.T.: 5.657 min
 Delta R.T.: 0.002 min
 Response: 1086491
 Conc: 14.47 ng/ml



#4 AR-1016-2

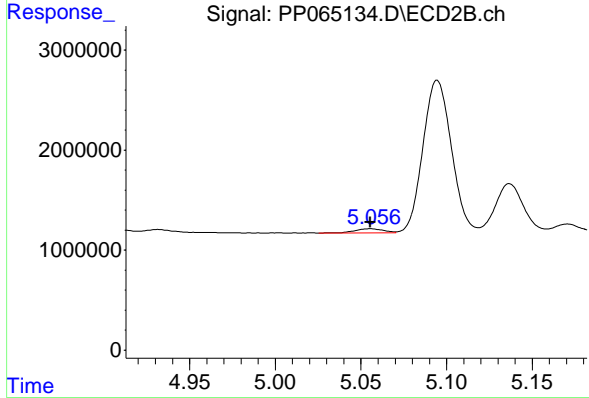
R.T.: 4.875 min
 Delta R.T.: -0.001 min
 Response: 561143
 Conc: 8.35 ng/ml



#5 AR-1016-3

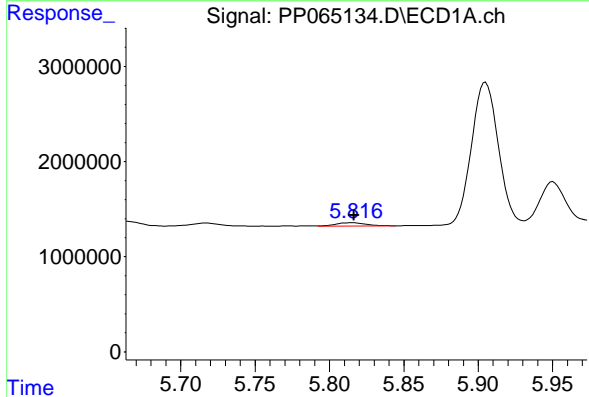
R.T.: 5.717 min
 Delta R.T.: -0.001 min
 Response: 530744
 Conc: 10.93 ng/ml

Instrument :
 ECD_P
 ClientSampleId :
 AR1254CCC500



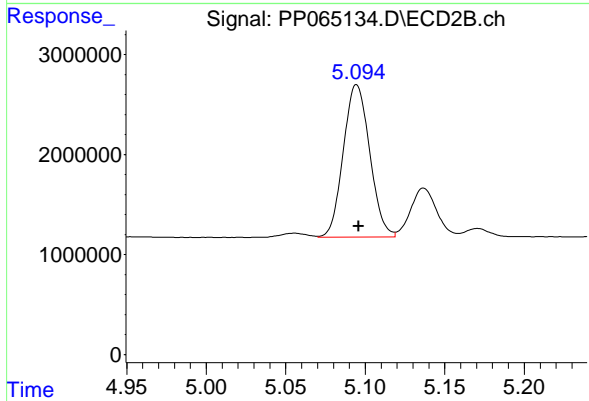
#5 AR-1016-3

R.T.: 5.056 min
 Delta R.T.: 0.000 min
 Response: 511566
 Conc: 13.95 ng/ml



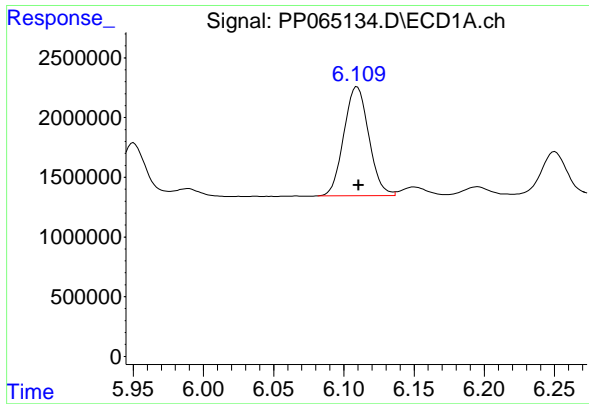
#6 AR-1016-4

R.T.: 5.816 min
 Delta R.T.: 0.000 min
 Response: 451795
 Conc: 11.94 ng/ml



#6 AR-1016-4

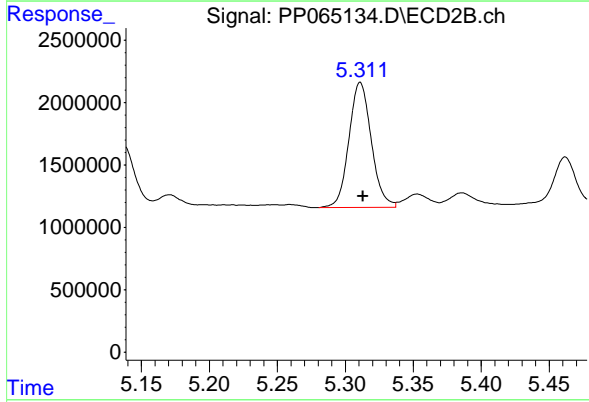
R.T.: 5.095 min
 Delta R.T.: -0.001 min
 Response: 17675559
 Conc: 569.20 ng/ml



#7 AR-1016-5

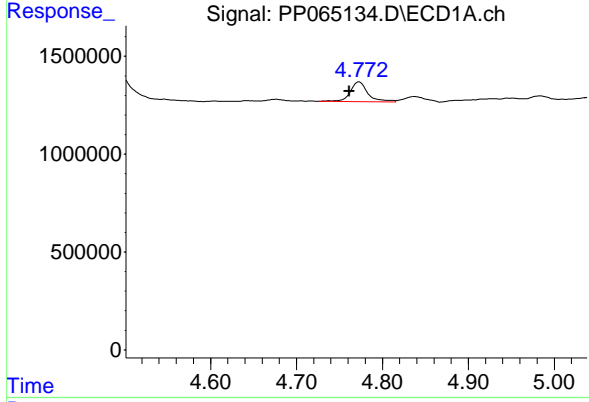
R.T.: 6.109 min
 Delta R.T.: -0.001 min
 Response: 11306825
 Conc: 297.30 ng/ml

Instrument :
 ECD_P
 ClientSampleId :
 AR1254CCC500



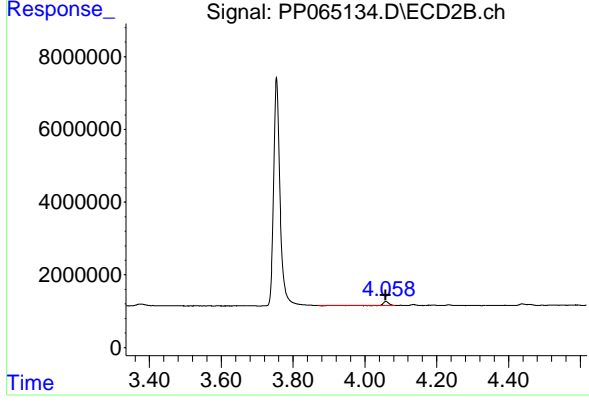
#7 AR-1016-5

R.T.: 5.311 min
 Delta R.T.: -0.002 min
 Response: 11463505
 Conc: 286.57 ng/ml



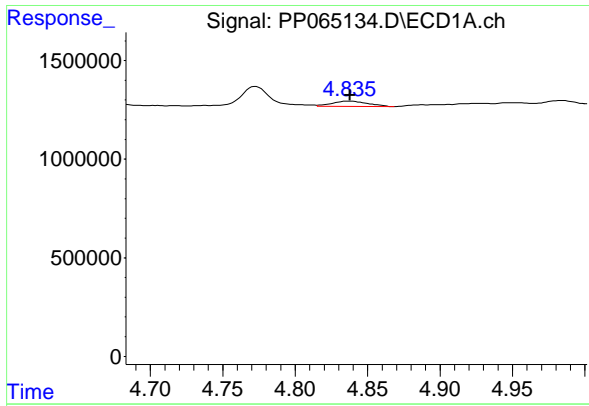
#9 AR-1221-2

R.T.: 4.773 min
 Delta R.T.: 0.011 min
 Response: 1425306
 Conc: 94.66 ng/ml



#9 AR-1221-2

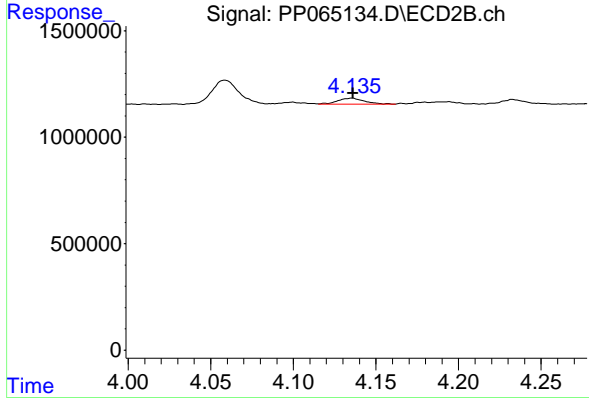
R.T.: 4.059 min
 Delta R.T.: 0.000 min
 Response: 1296747
 Conc: 86.29 ng/ml



#10 AR-1221-3

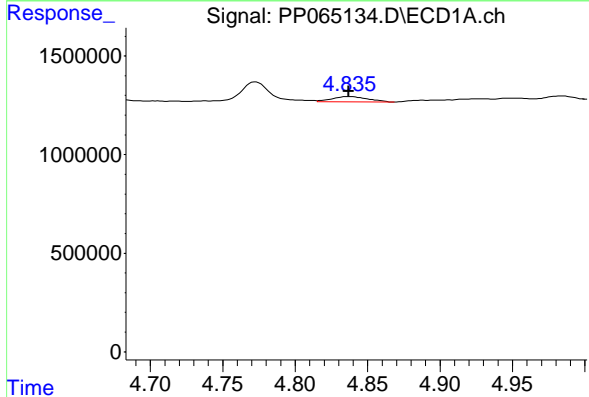
R.T.: 4.837 min
 Delta R.T.: -0.001 min
 Response: 478605
 Conc: 10.51 ng/ml

Instrument :
 ECD_P
 ClientSampleId :
 AR1254CCC500



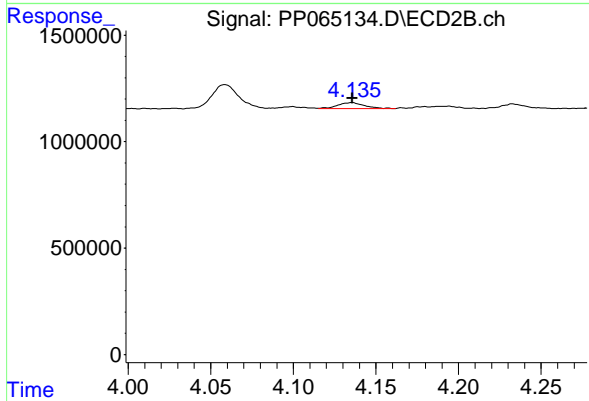
#10 AR-1221-3

R.T.: 4.135 min
 Delta R.T.: 0.000 min
 Response: 323713
 Conc: 7.32 ng/ml



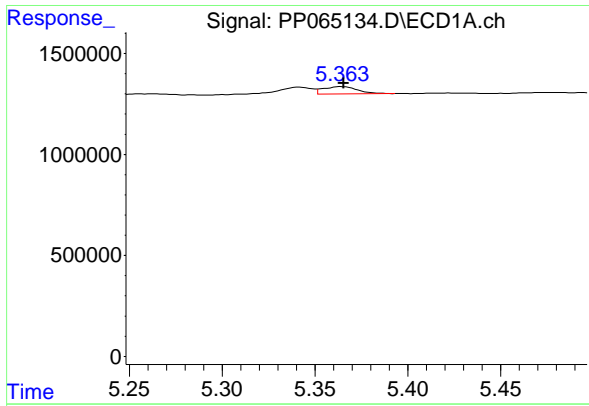
#11 AR-1232-1

R.T.: 4.837 min
 Delta R.T.: 0.000 min
 Response: 478605
 Conc: 12.71 ng/ml



#11 AR-1232-1

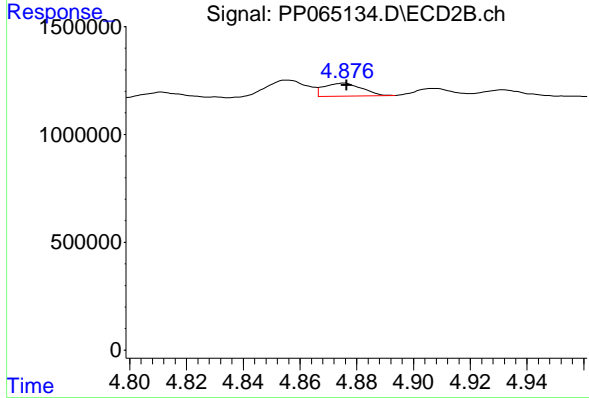
R.T.: 4.135 min
 Delta R.T.: 0.000 min
 Response: 323713
 Conc: 8.77 ng/ml



#12 AR-1232-2

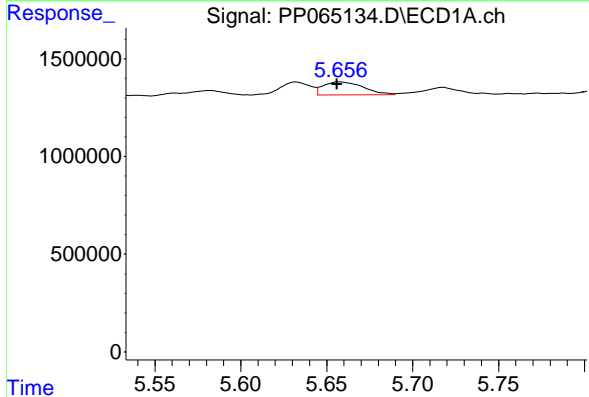
R.T.: 5.364 min
 Delta R.T.: -0.001 min
 Response: 479369
 Conc: 22.50 ng/ml

Instrument :
 ECD_P
 ClientSampleId :
 AR1254CCC500



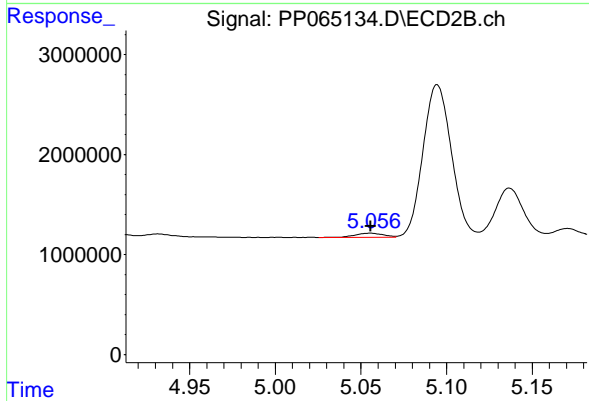
#12 AR-1232-2

R.T.: 4.875 min
 Delta R.T.: -0.001 min
 Response: 561143
 Conc: 17.19 ng/ml



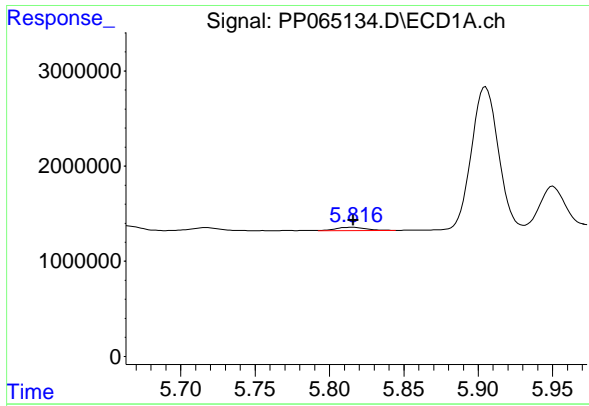
#13 AR-1232-3

R.T.: 5.657 min
 Delta R.T.: 0.001 min
 Response: 1086491
 Conc: 29.84 ng/ml



#13 AR-1232-3

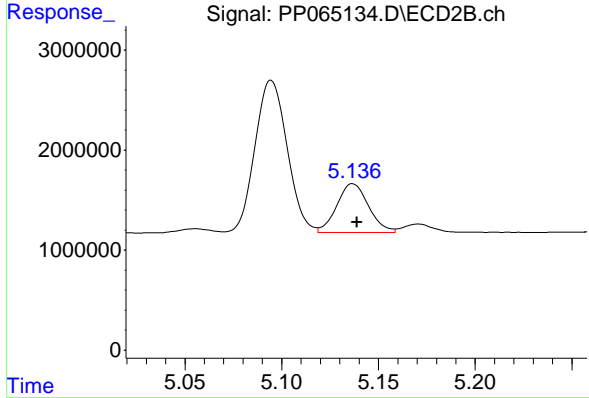
R.T.: 5.056 min
 Delta R.T.: 0.000 min
 Response: 511566
 Conc: 29.03 ng/ml



#14 AR-1232-4

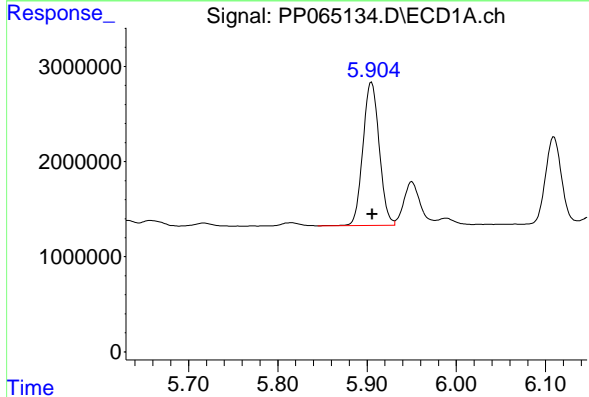
R.T.: 5.816 min
 Delta R.T.: 0.000 min
 Response: 451795
 Conc: 24.46 ng/ml

Instrument :
 ECD_P
 ClientSampleId :
 AR1254CCC500



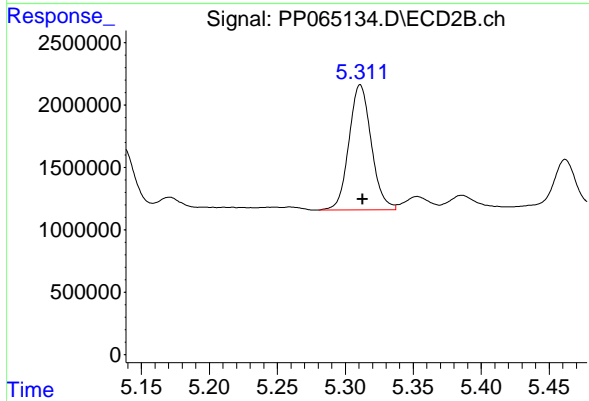
#14 AR-1232-4

R.T.: 5.137 min
 Delta R.T.: -0.002 min
 Response: 5578393
 Conc: 332.68 ng/ml



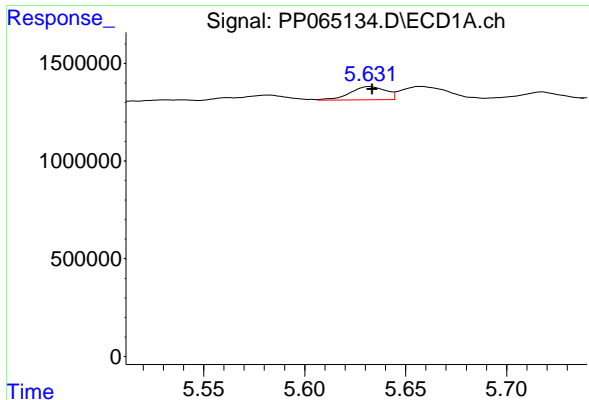
#15 AR-1232-5

R.T.: 5.905 min
 Delta R.T.: 0.000 min
 Response: 19036073
 Conc: 1243.98 ng/ml



#15 AR-1232-5

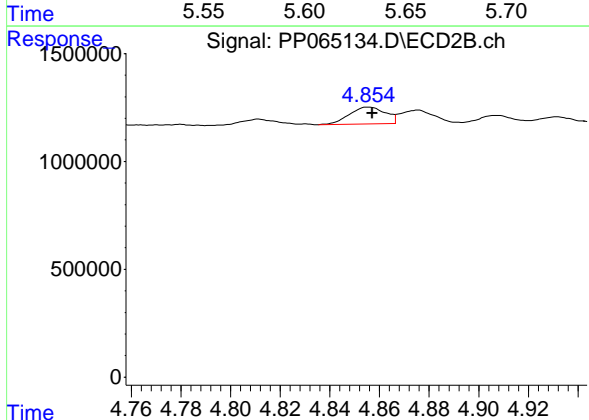
R.T.: 5.311 min
 Delta R.T.: -0.002 min
 Response: 11463505
 Conc: 634.79 ng/ml



#16 AR-1242-1

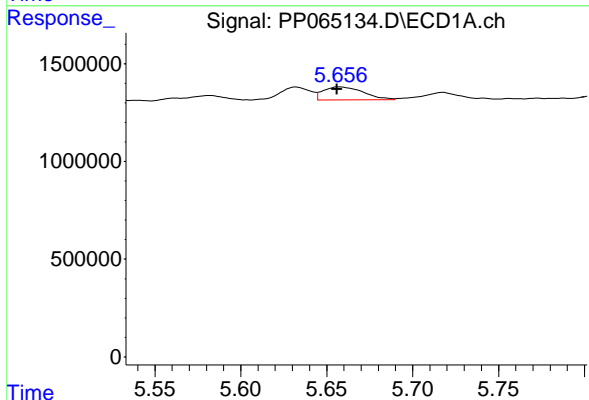
R.T.: 5.632 min
 Delta R.T.: -0.001 min
 Response: 832119
 Conc: 20.16 ng/ml

Instrument :
 ECD_P
 ClientSampleId :
 AR1254CCC500



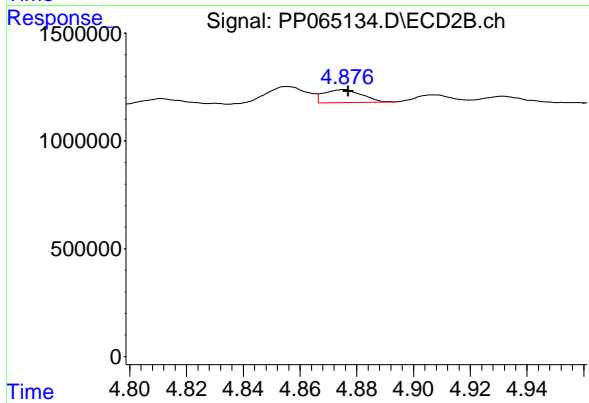
#16 AR-1242-1

R.T.: 4.856 min
 Delta R.T.: -0.002 min
 Response: 787941
 Conc: 19.60 ng/ml



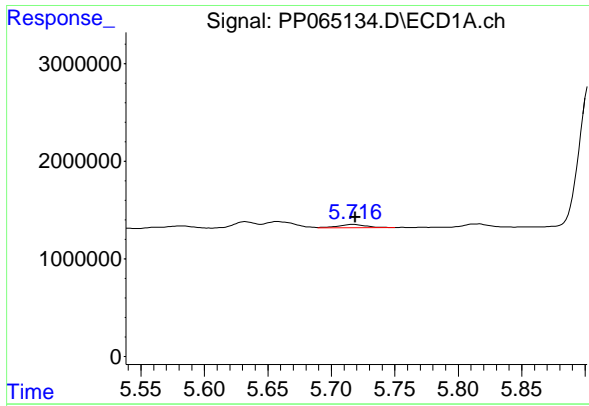
#17 AR-1242-2

R.T.: 5.657 min
 Delta R.T.: 0.001 min
 Response: 1086491
 Conc: 16.84 ng/ml



#17 AR-1242-2

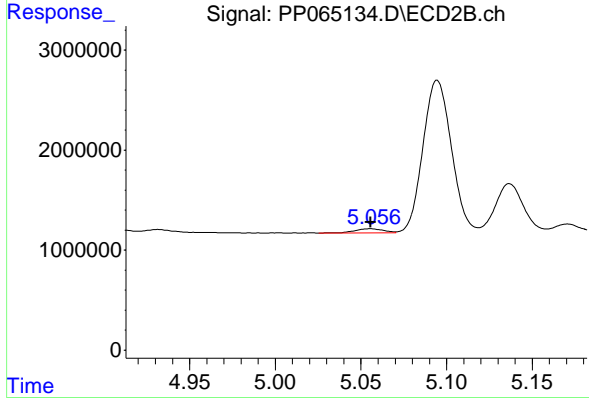
R.T.: 4.875 min
 Delta R.T.: -0.002 min
 Response: 561143
 Conc: 9.93 ng/ml



#18 AR-1242-3

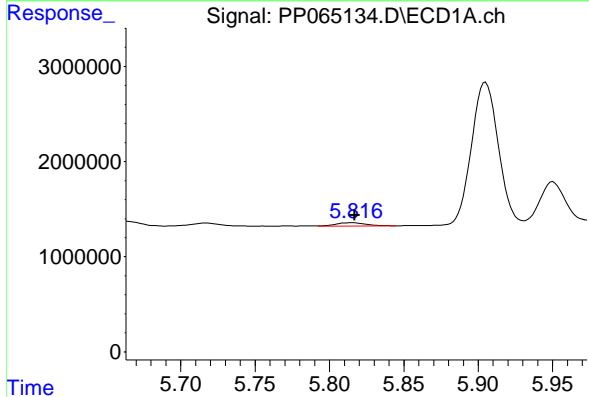
R.T.: 5.717 min
 Delta R.T.: -0.001 min
 Response: 530744
 Conc: 12.68 ng/ml

Instrument :
 ECD_P
 ClientSampleId :
 AR1254CCC500



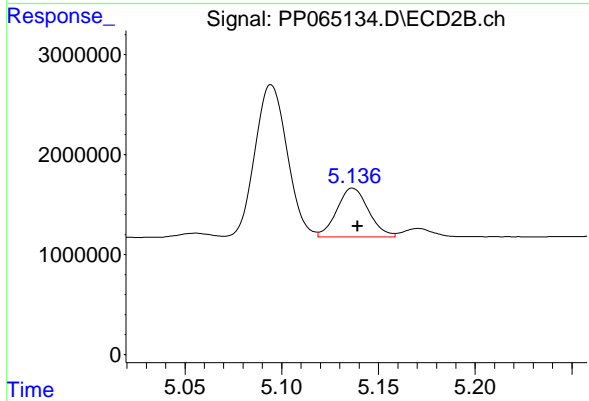
#18 AR-1242-3

R.T.: 5.056 min
 Delta R.T.: 0.000 min
 Response: 511566
 Conc: 16.64 ng/ml



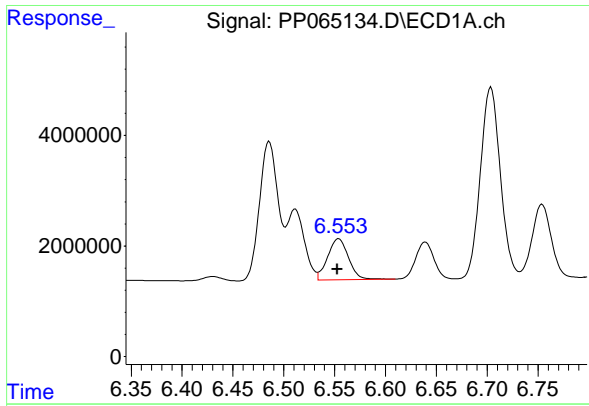
#19 AR-1242-4

R.T.: 5.816 min
 Delta R.T.: 0.000 min
 Response: 451795
 Conc: 13.76 ng/ml



#19 AR-1242-4

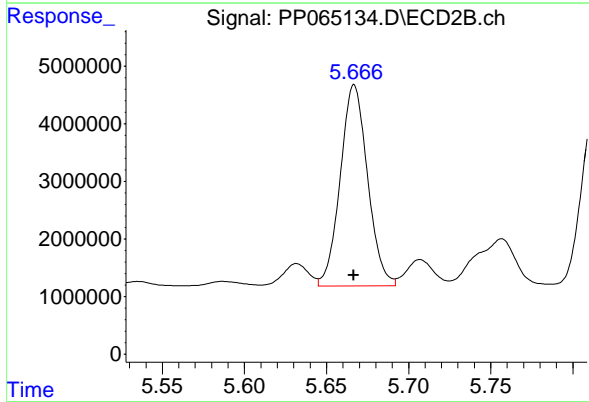
R.T.: 5.137 min
 Delta R.T.: -0.003 min
 Response: 5578393
 Conc: 172.01 ng/ml



#20 AR-1242-5

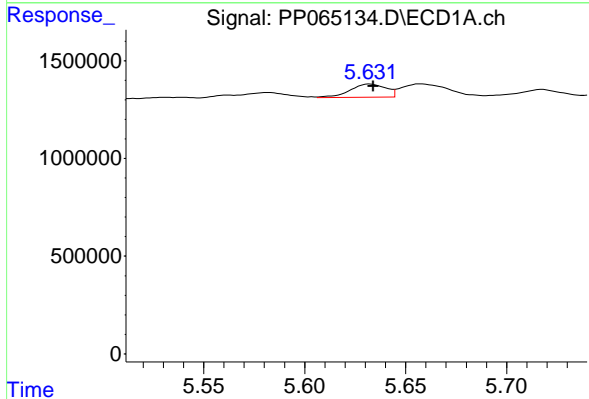
R.T.: 6.554 min
 Delta R.T.: 0.001 min
 Response: 10576897
 Conc: 332.62 ng/ml

Instrument :
 ECD_P
 ClientSampleId :
 AR1254CCC500



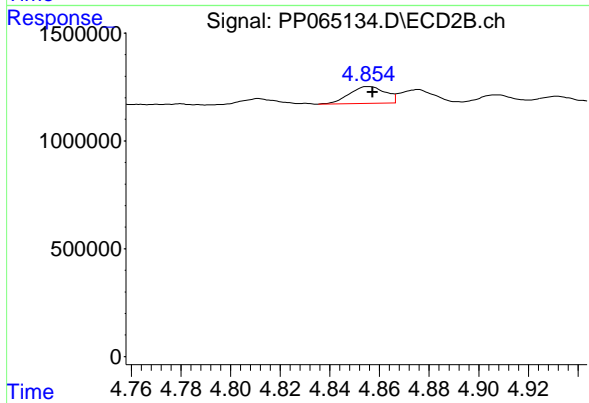
#20 AR-1242-5

R.T.: 5.667 min
 Delta R.T.: 0.000 min
 Response: 40463233
 Conc: 1114.41 ng/ml



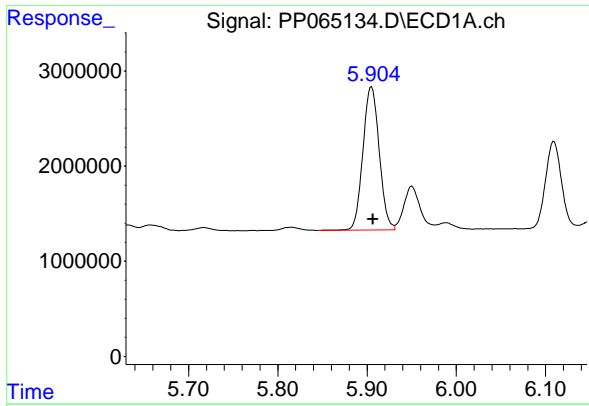
#21 AR-1248-1

R.T.: 5.632 min
 Delta R.T.: -0.002 min
 Response: 832119
 Conc: 25.07 ng/ml



#21 AR-1248-1

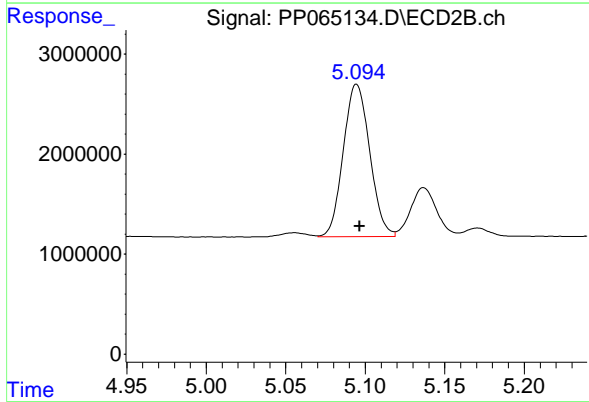
R.T.: 4.856 min
 Delta R.T.: -0.002 min
 Response: 787941
 Conc: 26.14 ng/ml



#22 AR-1248-2

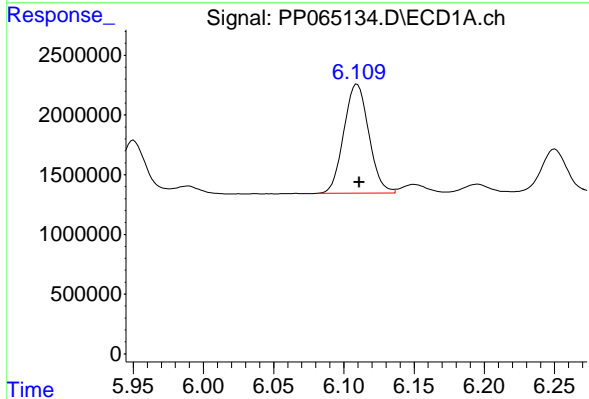
R.T.: 5.905 min
 Delta R.T.: -0.002 min
 Response: 19036073
 Conc: 374.05 ng/ml

Instrument :
 ECD_P
 ClientSampleId :
 AR1254CCC500



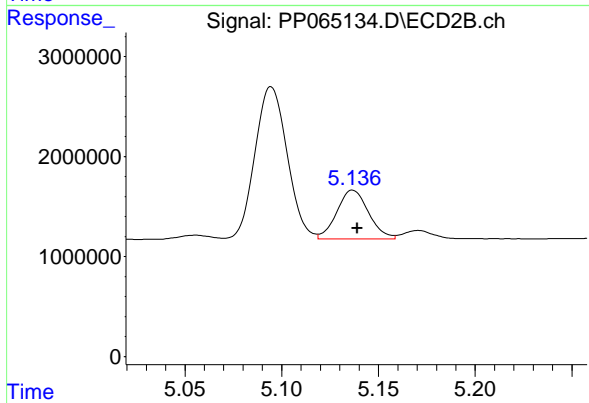
#22 AR-1248-2

R.T.: 5.095 min
 Delta R.T.: -0.002 min
 Response: 17675559
 Conc: 388.83 ng/ml



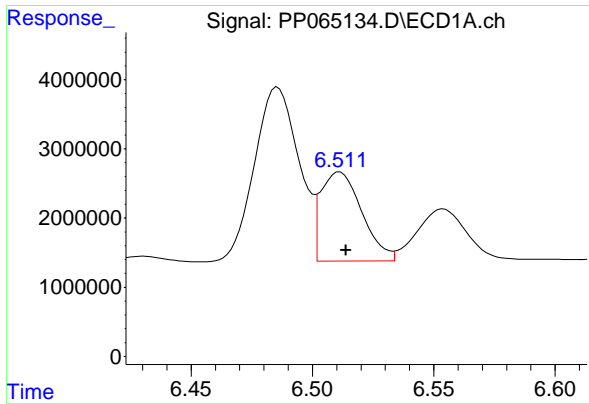
#23 AR-1248-3

R.T.: 6.109 min
 Delta R.T.: -0.002 min
 Response: 11306825
 Conc: 207.21 ng/ml



#23 AR-1248-3

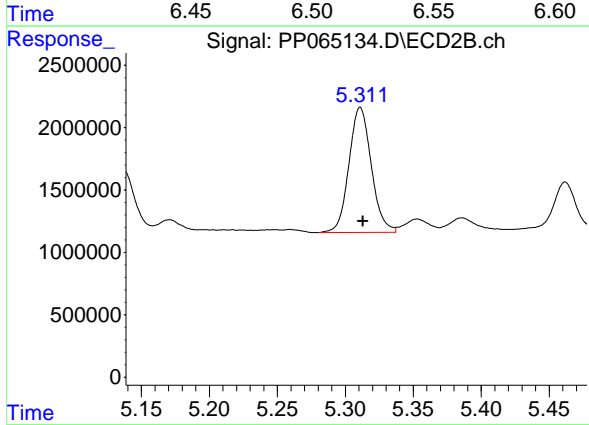
R.T.: 5.137 min
 Delta R.T.: -0.002 min
 Response: 5578393
 Conc: 117.29 ng/ml



#24 AR-1248-4

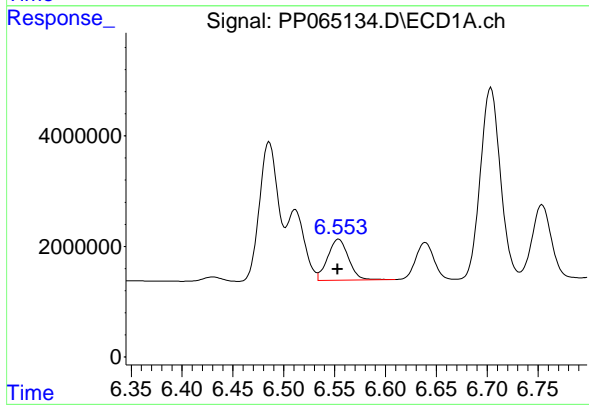
R.T.: 6.511 min
 Delta R.T.: -0.002 min
 Response: 15202154
 Conc: 277.62 ng/ml

Instrument :
 ECD_P
 ClientSampleId :
 AR1254CCC500



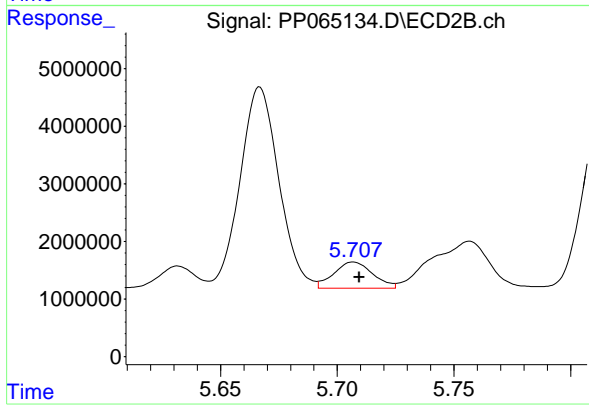
#24 AR-1248-4

R.T.: 5.311 min
 Delta R.T.: -0.002 min
 Response: 11463505
 Conc: 207.61 ng/ml



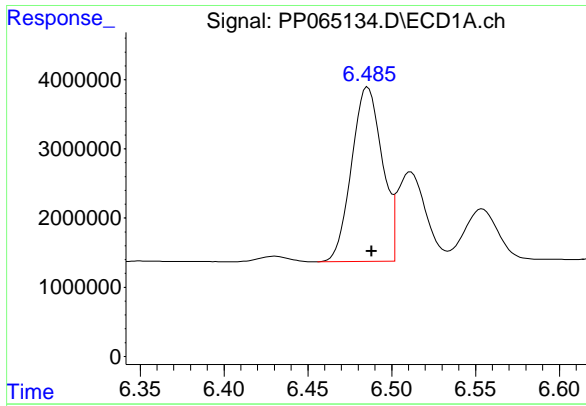
#25 AR-1248-5

R.T.: 6.554 min
 Delta R.T.: 0.001 min
 Response: 10576897
 Conc: 196.45 ng/ml



#25 AR-1248-5

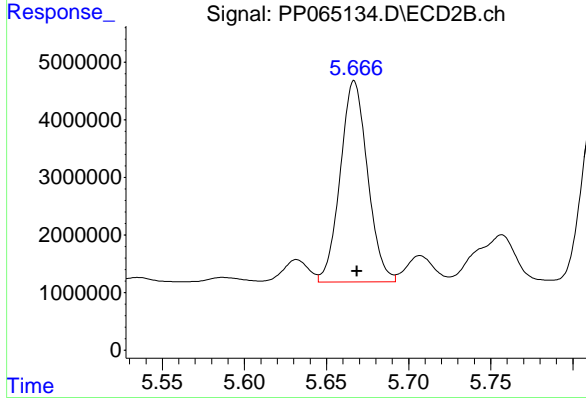
R.T.: 5.707 min
 Delta R.T.: -0.002 min
 Response: 5284955
 Conc: 110.06 ng/ml



#26 AR-1254-1

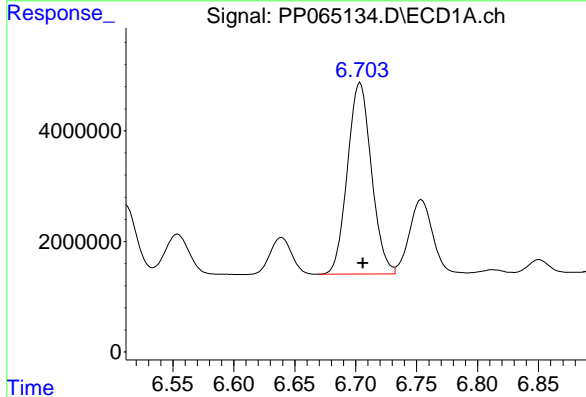
R.T.: 6.486 min
 Delta R.T.: -0.002 min
 Response: 32079248
 Conc: 519.58 ng/ml

Instrument :
 ECD_P
 ClientSampleId :
 AR1254CCC500



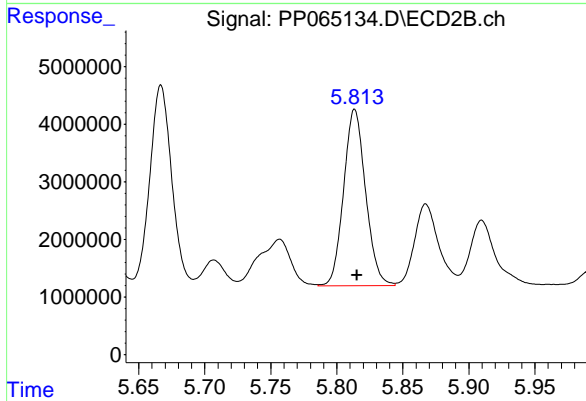
#26 AR-1254-1

R.T.: 5.667 min
 Delta R.T.: -0.002 min
 Response: 40463233
 Conc: 507.20 ng/ml



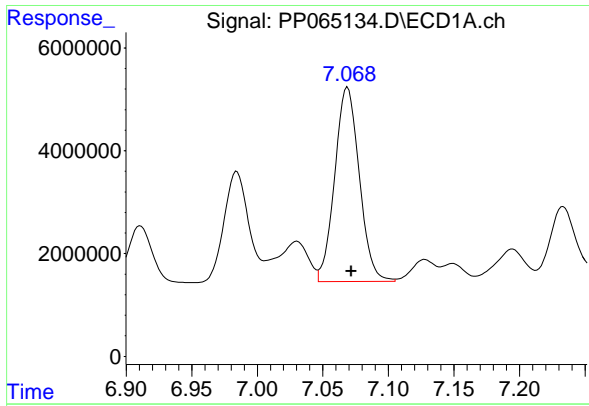
#27 AR-1254-2

R.T.: 6.704 min
 Delta R.T.: -0.002 min
 Response: 47516113
 Conc: 517.93 ng/ml



#27 AR-1254-2

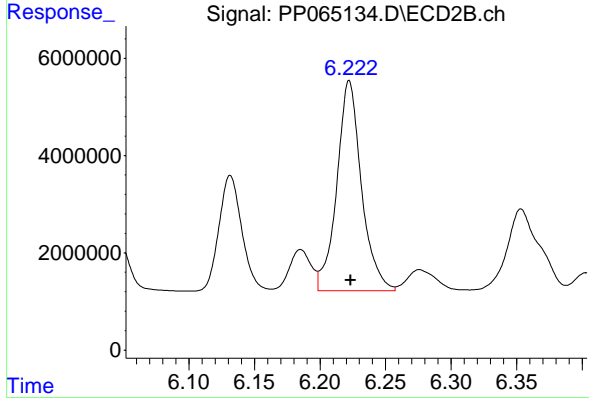
R.T.: 5.814 min
 Delta R.T.: -0.002 min
 Response: 35531752
 Conc: 503.86 ng/ml



#28 AR-1254-3

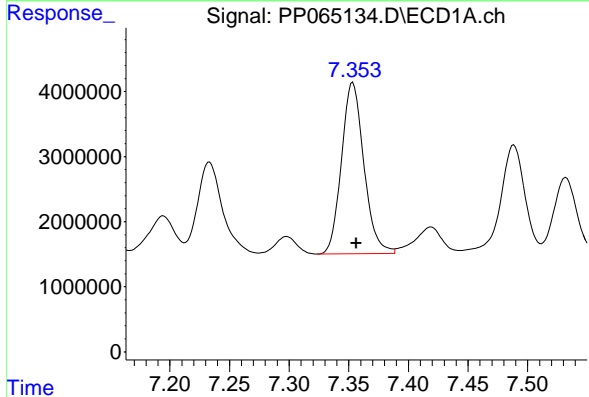
R.T.: 7.069 min
 Delta R.T.: -0.003 min
 Response: 49330452
 Conc: 530.31 ng/ml

Instrument :
 ECD_P
 ClientSampleId :
 AR1254CCC500



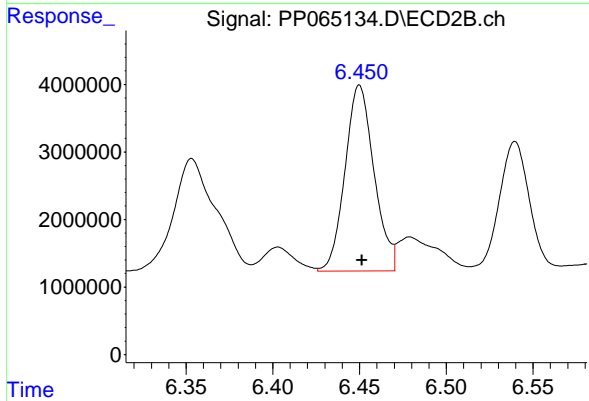
#28 AR-1254-3

R.T.: 6.222 min
 Delta R.T.: -0.001 min
 Response: 56473250
 Conc: 512.41 ng/ml



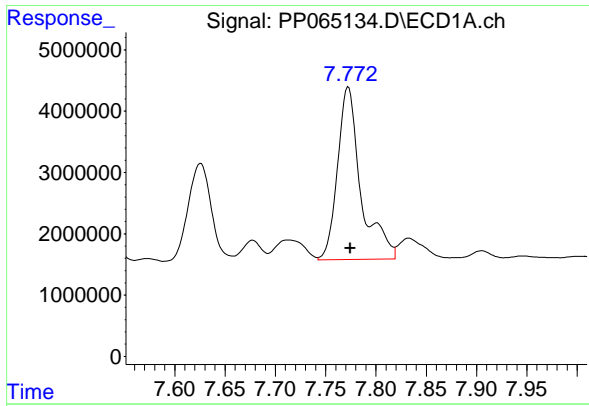
#29 AR-1254-4

R.T.: 7.353 min
 Delta R.T.: -0.003 min
 Response: 34381592
 Conc: 567.15 ng/ml



#29 AR-1254-4

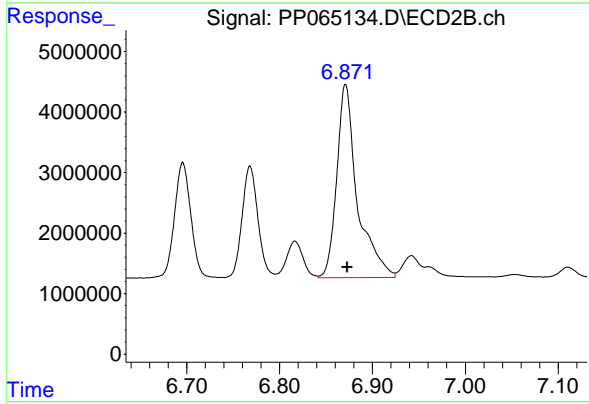
R.T.: 6.450 min
 Delta R.T.: -0.001 min
 Response: 32108445
 Conc: 568.75 ng/ml



#30 AR-1254-5

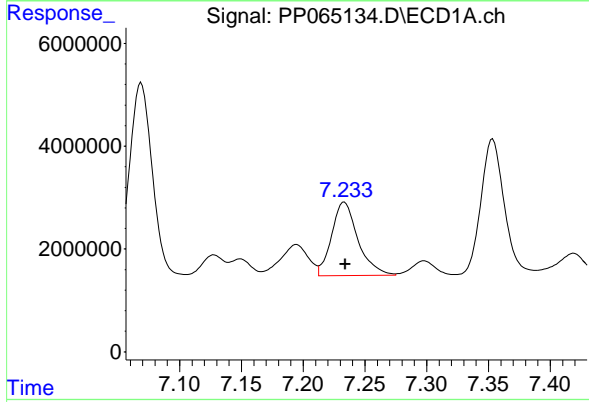
R.T.: 7.773 min
 Delta R.T.: -0.002 min
 Response: 45548834
 Conc: 648.39 ng/ml

Instrument :
 ECD_P
 ClientSampleId :
 AR1254CCC500



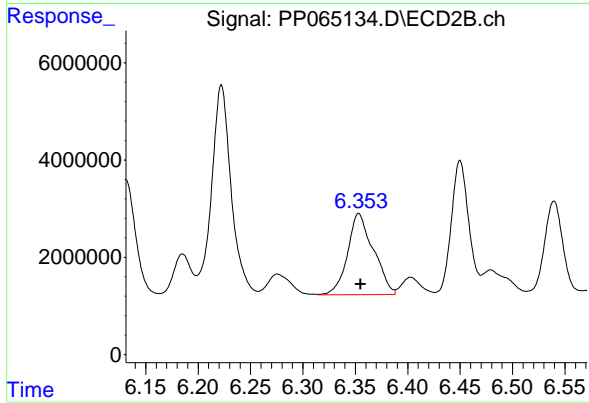
#30 AR-1254-5

R.T.: 6.871 min
 Delta R.T.: -0.002 min
 Response: 49168627
 Conc: 527.67 ng/ml



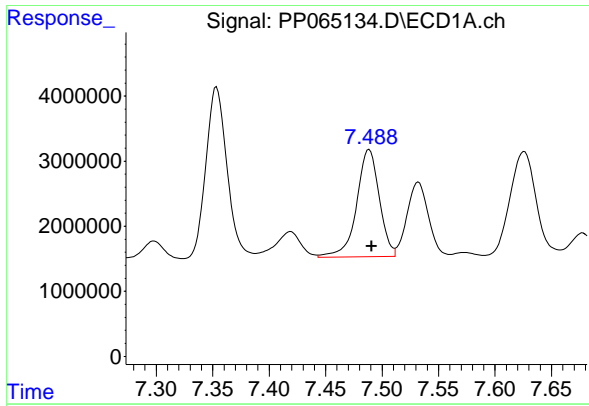
#31 AR-1260-1

R.T.: 7.233 min
 Delta R.T.: 0.000 min
 Response: 21196661
 Conc: 307.11 ng/ml



#31 AR-1260-1

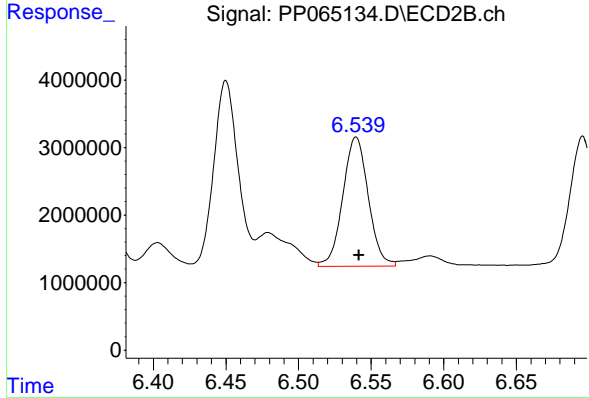
R.T.: 6.353 min
 Delta R.T.: -0.002 min
 Response: 28673757
 Conc: 381.78 ng/ml



#32 AR-1260-2

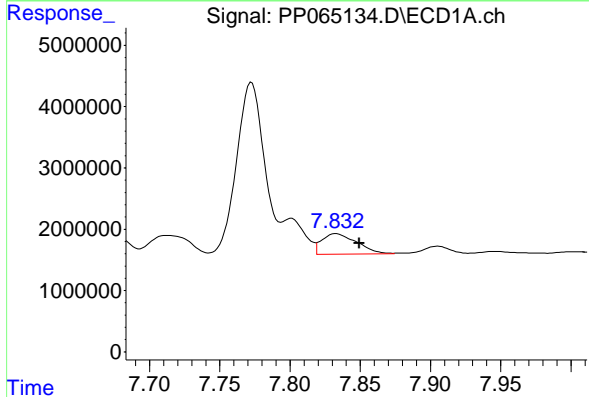
R.T.: 7.489 min
 Delta R.T.: -0.002 min
 Response: 23070565
 Conc: 298.72 ng/ml

Instrument :
 ECD_P
 ClientSampleId :
 AR1254CCC500



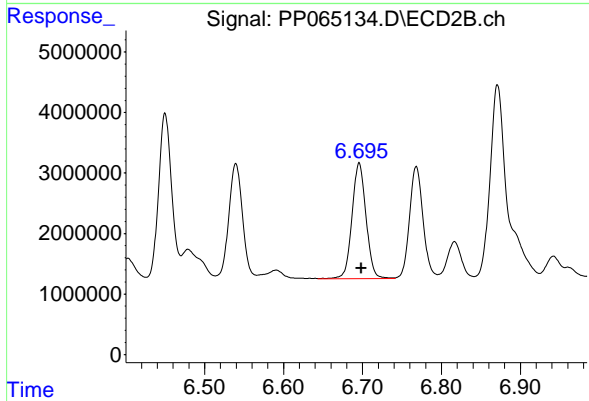
#32 AR-1260-2

R.T.: 6.540 min
 Delta R.T.: -0.002 min
 Response: 23367233
 Conc: 269.99 ng/ml



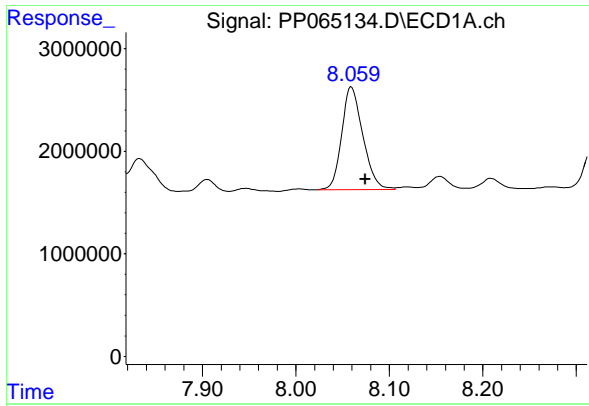
#33 AR-1260-3

R.T.: 7.833 min
 Delta R.T.: -0.017 min
 Response: 5841566
 Conc: 97.57 ng/ml



#33 AR-1260-3

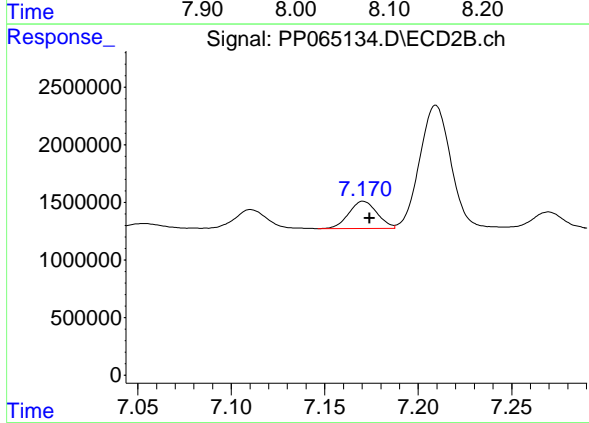
R.T.: 6.696 min
 Delta R.T.: -0.003 min
 Response: 23711479
 Conc: 278.49 ng/ml



#34 AR-1260-4

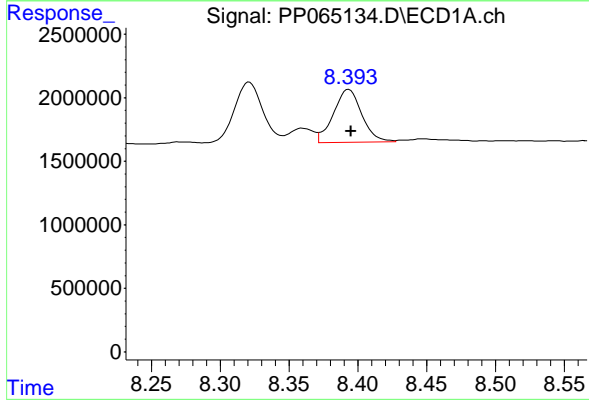
R.T.: 8.059 min
 Delta R.T.: -0.015 min
 Response: 15760982
 Conc: 234.13 ng/ml

Instrument :
 ECD_P
 ClientSampleId :
 AR1254CCC500



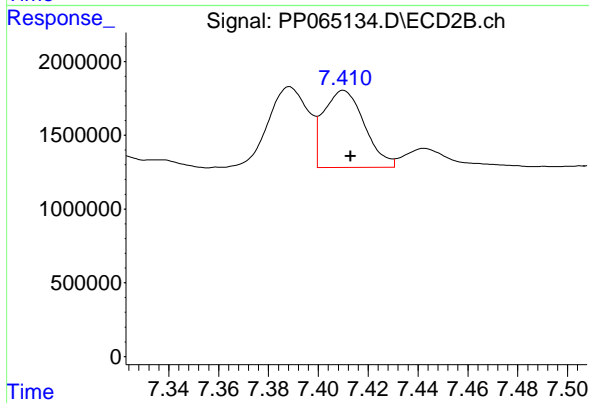
#34 AR-1260-4

R.T.: 7.171 min
 Delta R.T.: -0.003 min
 Response: 2505023
 Conc: 37.38 ng/ml



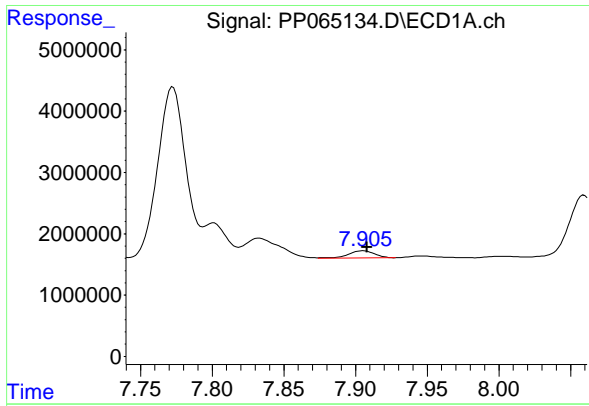
#35 AR-1260-5

R.T.: 8.393 min
 Delta R.T.: -0.002 min
 Response: 5966582
 Conc: 50.35 ng/ml



#35 AR-1260-5

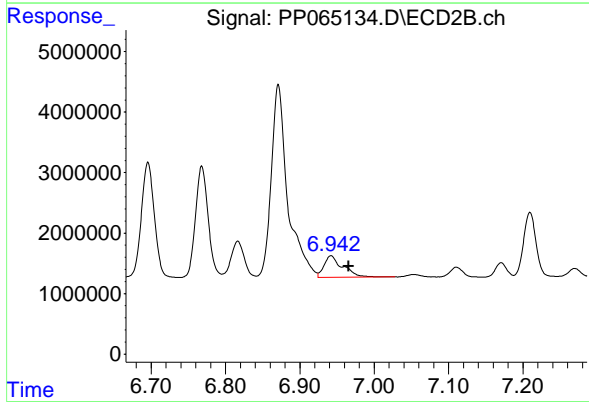
R.T.: 7.410 min
 Delta R.T.: -0.003 min
 Response: 5959250
 Conc: 45.03 ng/ml



#36 AR-1262-1

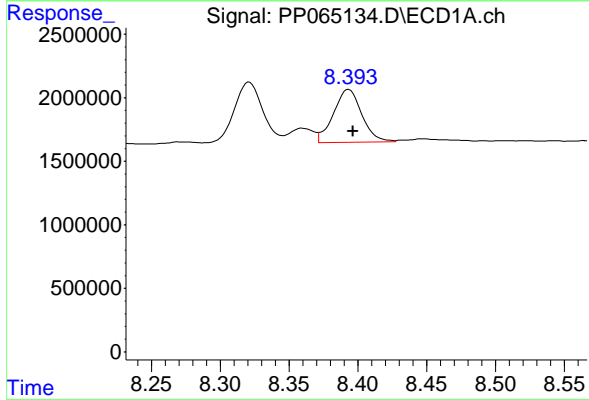
R.T.: 7.905 min
 Delta R.T.: -0.003 min
 Response: 1521099
 Conc: 39.60 ng/ml

Instrument :
 ECD_P
 ClientSampleId :
 AR1254CCC500



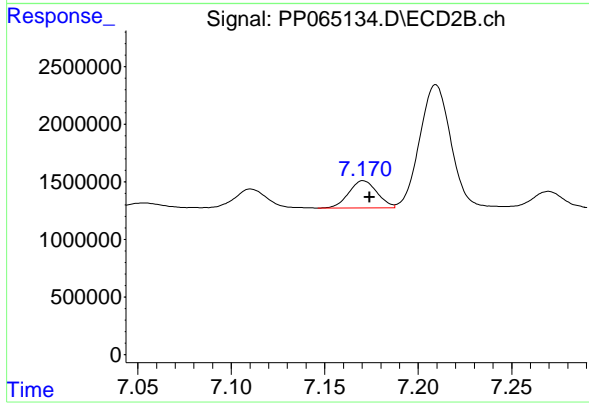
#36 AR-1262-1

R.T.: 6.942 min
 Delta R.T.: -0.024 min
 Response: 6225129
 Conc: 135.42 ng/ml



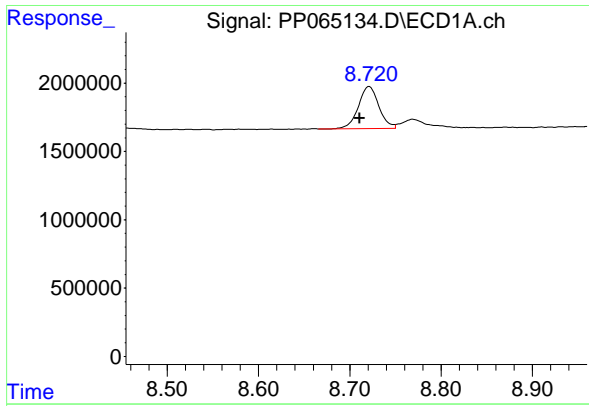
#37 AR-1262-2

R.T.: 8.393 min
 Delta R.T.: -0.003 min
 Response: 5966582
 Conc: 41.32 ng/ml



#37 AR-1262-2

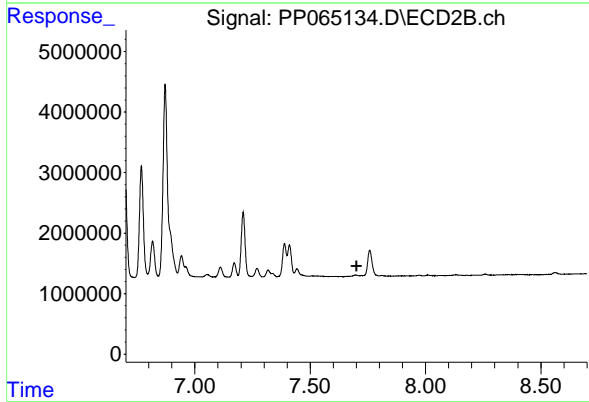
R.T.: 7.171 min
 Delta R.T.: -0.003 min
 Response: 2505023
 Conc: 28.40 ng/ml



#38 AR-1262-3

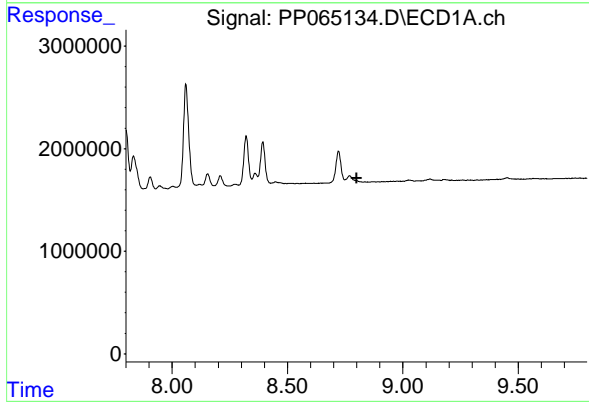
R.T.: 8.721 min
 Delta R.T.: 0.010 min
 Response: 4743695
 Conc: 45.46 ng/ml

Instrument :
 ECD_P
 ClientSampleId :
 AR1254CCC500



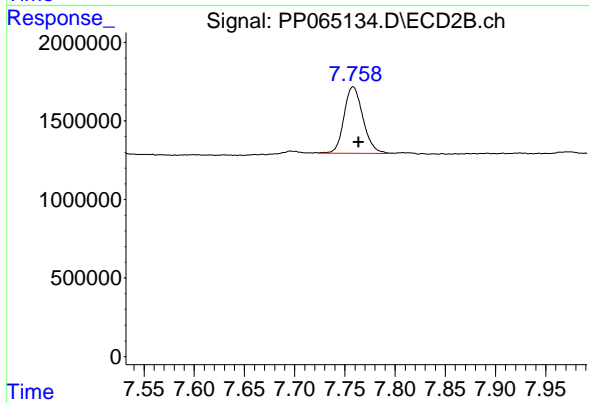
#38 AR-1262-3

R.T.: 0.000 min
 Exp R.T. : 7.701 min
 Response: 0
 Conc: N.D.



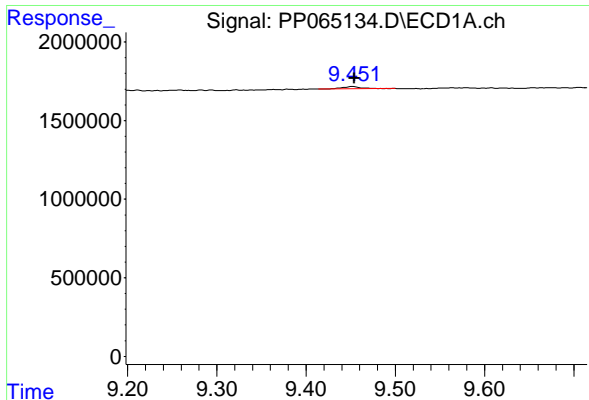
#39 AR-1262-4

R.T.: 0.000 min
 Exp R.T. : 8.799 min
 Response: 0
 Conc: N.D.



#39 AR-1262-4

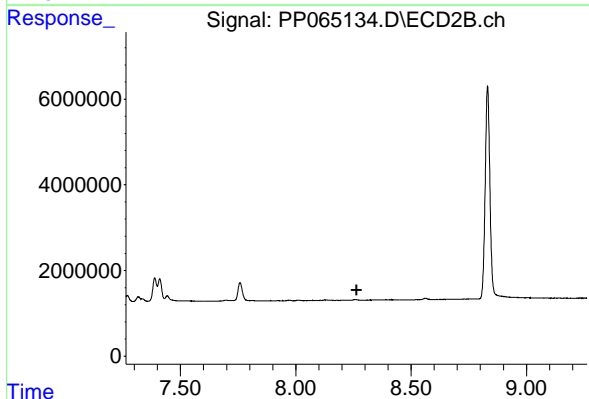
R.T.: 7.758 min
 Delta R.T.: -0.005 min
 Response: 5524216
 Conc: 45.40 ng/ml



#40 AR-1262-5

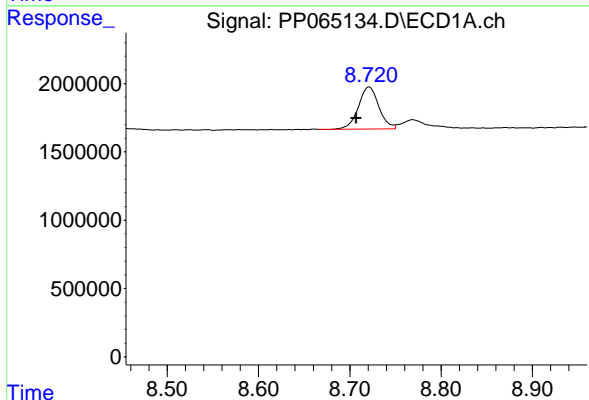
R.T.: 9.452 min
 Delta R.T.: -0.002 min
 Response: 197443
 Conc: 3.93 ng/ml

Instrument : ECD_P
 ClientSampleId : AR1254CCC500



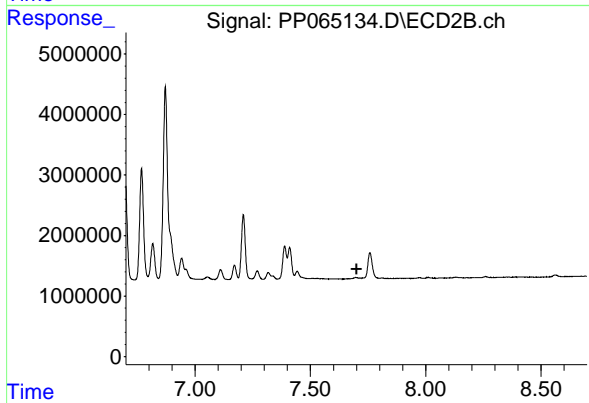
#40 AR-1262-5

R.T.: 0.000 min
 Exp R.T. : 8.263 min
 Response: 0
 Conc: N.D.



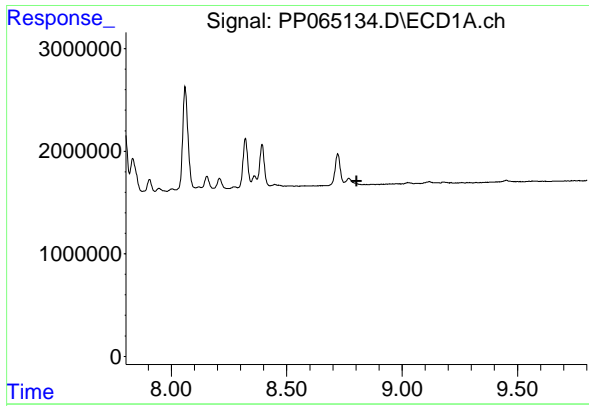
#41 AR-1268-1

R.T.: 8.721 min
 Delta R.T.: 0.014 min
 Response: 4743695
 Conc: 25.62 ng/ml



#41 AR-1268-1

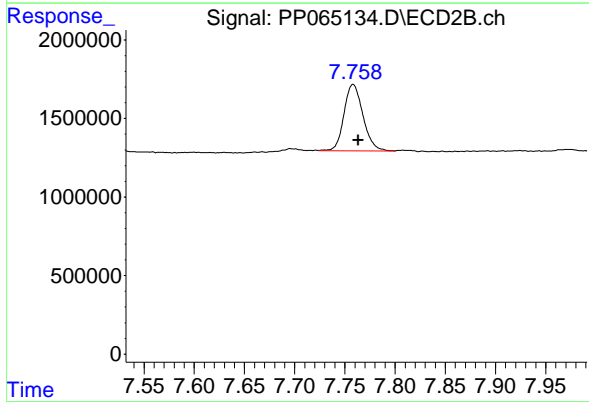
R.T.: 0.000 min
 Exp R.T. : 7.700 min
 Response: 0
 Conc: N.D.



#42 AR-1268-2

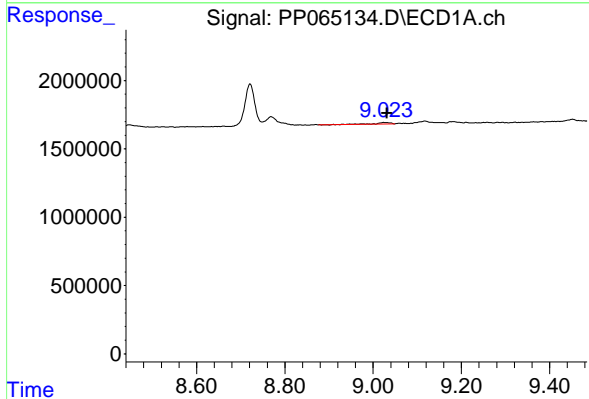
R.T.: 0.000 min
 Exp R.T.: 8.802 min
 Response: 0
 Conc: N.D.

Instrument :
 ECD_P
 ClientSampleId :
 AR1254CCC500



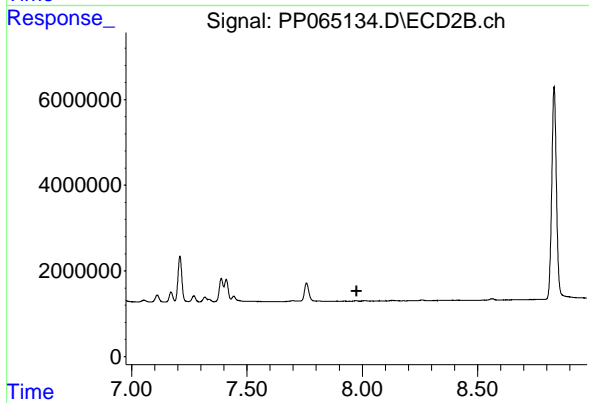
#42 AR-1268-2

R.T.: 7.758 min
 Delta R.T.: -0.005 min
 Response: 5524216
 Conc: 31.95 ng/ml



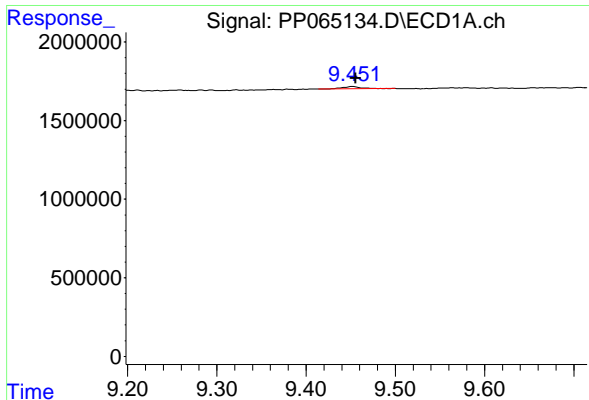
#43 AR-1268-3

R.T.: 9.024 min
 Delta R.T.: -0.007 min
 Response: 268850
 Conc: 1.78 ng/ml



#43 AR-1268-3

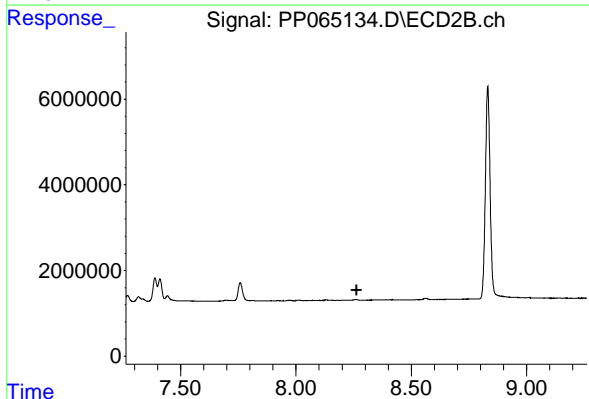
R.T.: 0.000 min
 Exp R.T.: 7.975 min
 Response: 0
 Conc: N.D.



#44 AR-1268-4

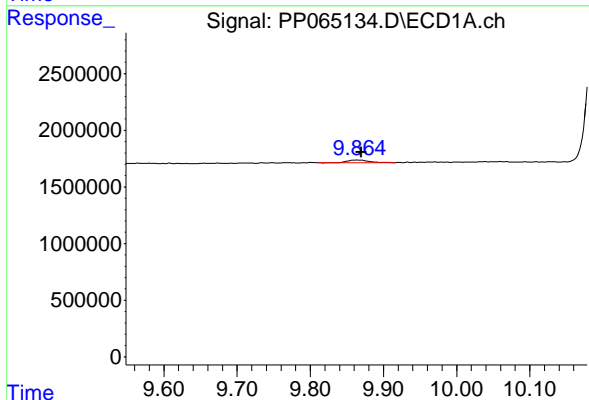
R.T.: 9.452 min
 Delta R.T.: -0.003 min
 Response: 197443
 Conc: 3.79 ng/ml

Instrument :
 ECD_P
 ClientSampleId :
 AR1254CCC500



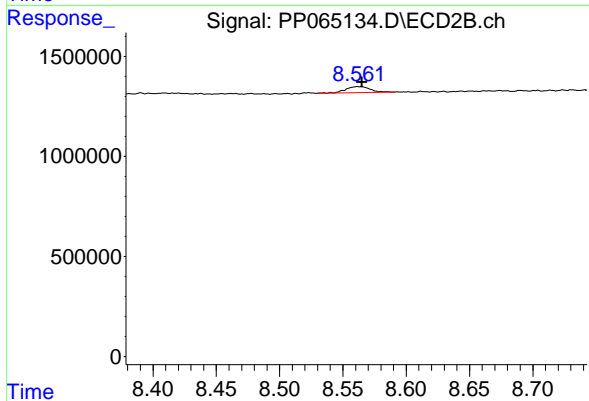
#44 AR-1268-4

R.T.: 0.000 min
 Exp R.T. : 8.262 min
 Response: 0
 Conc: N.D.



#45 AR-1268-5

R.T.: 9.864 min
 Delta R.T.: -0.005 min
 Response: 486611
 Conc: 1.07 ng/ml



#45 AR-1268-5

R.T.: 8.562 min
 Delta R.T.: -0.003 min
 Response: 403680
 Conc: 0.85 ng/ml