

Data Path : Z:\pestpcbsrv\HPCHEM1\ECD_P\Data\PP052125\
 Data File : PP072271.D
 Signal(s) : Signal #1: ECD1A.ch Signal #2: ECD2B.ch
 Acq On : 21 May 2025 23:22
 Operator : YP\AJ
 Sample : AR1248CCC500
 Misc :
 ALS Vial : 5 Sample Multiplier: 1

Instrument :
 ECD_P
 ClientSampleId :

Integration File signal 1: autoint1.e
 Integration File signal 2: autoint2.e
 Quant Time: May 22 01:52:20 2025
 Quant Method : Z:\pestpcbsrv\HPCHEM1\ECD_P\methods\PP051925.M
 Quant Title : GC EXTRACTABLES
 QLast Update : Tue May 20 03:29:33 2025
 Response via : Initial Calibration
 Integrator: ChemStation

Volume Inj. : 2 µl
 Signal #1 Phase : ZB-MR1 Signal #2 Phase: ZB-MR2
 Signal #1 Info : 30Mx0.32mmx 0.50µ Signal #2 Info : 30M x 0.32mm x 0.25µm

Compound	RT#1	RT#2	Resp#1	Resp#2	ng/ml	ng/ml

System Monitoring Compounds						
1) SA Tetrachlo...	4.499	3.796	109.1E6	94998712	54.243	59.435
2) SA Decachlor...	10.206	8.818	89134660	58651741	54.713	55.405
Target Compounds						
3) L1 AR-1016-1	5.652	4.878	25462698	23466525	339.124	382.007
4) L1 AR-1016-2	5.674	4.896	30453736	24216689	284.637	275.850
5) L1 AR-1016-3	5.736	5.075	14745714	16549508	224.902	347.281 #
6) L1 AR-1016-4	5.833	5.116	16681301	30876685	313.146	811.576 #
7) L1 AR-1016-5	6.126	5.330	38076939	40637553	778.523	815.615
8) L2 AR-1221-1	4.697	4.004	178448	494251	7.100	21.374 #
9) L2 AR-1221-2	4.801	4.096	1894212	2067128	105.343	116.797
10) L2 AR-1221-3	4.862	4.167	2367585	2281643	40.465	43.651
11) L3 AR-1232-1	4.862	4.167	2367585	2281643	50.258	52.640
12) L3 AR-1232-2	5.387	4.896	10629306	24216689	456.523	548.128
13) L3 AR-1232-3	5.674	5.075	30453736	16549508	608.307	707.755
14) L3 AR-1232-4	5.833	5.157	16681301	32893301	664.619	1587.503 #
15) L3 AR-1232-5	5.924	5.330	33654861	40637553	1920.990	1755.066
16) L4 AR-1242-1	5.652	4.878	25462698	23466525	406.770	450.341
17) L4 AR-1242-2	5.674	4.896	30453736	24216689	350.931	329.496
18) L4 AR-1242-3	5.736	5.075	14745714	16549508	267.783	422.985 #
19) L4 AR-1242-4	5.833	5.157	16681301	32893301	376.137	875.222 #
20) L4 AR-1242-5	6.564	5.681	43713959	54871374	857.392	1137.050 #
21) L5 AR-1248-1	5.652	4.878	25462698	23466525	526.138	541.682
22) L5 AR-1248-2	5.924	5.116	33654861	30876685	554.994	546.709
23) L5 AR-1248-3	6.126	5.157	38076939	32893301	575.353	556.504
24) L5 AR-1248-4	6.525	5.330	46295501	40637553	529.745	583.430
25) L5 AR-1248-5	6.564	5.722	43713959	40441004	526.511	579.887
26) L6 AR-1254-1	6.499	5.681	33942742	54871374	394.668	548.965 #
27) L6 AR-1254-2	6.720	5.830	43712344	17774393	334.506	205.944 #
28) L6 AR-1254-3	7.080	6.232	23213409	24874528	175.855	193.394
29) L6 AR-1254-4	7.363	6.461	20370595	18167940	156.084	212.998 #
30) L6 AR-1254-5	7.781	6.878	4065107	5534629	36.541	48.827 #
31) L7 AR-1260-1	7.249	6.377	2827822	13359338	30.213	167.507 #
32) L7 AR-1260-2	7.498	6.551	4641425	2313407	32.347	22.810 #
33) L7 AR-1260-3	7.861	6.702	213462	2967574	1.875	34.148 #
34) L7 AR-1260-4	8.067	7.174	1623249	625894	15.128	8.682 #
35) L7 AR-1260-5	8.400	7.415	1184468	1088933	5.005	6.272 #
36) L8 AR-1262-1	8.067	6.948	1623249	607300	12.182	5.373 #
37) L8 AR-1262-2	8.400	7.174	1184468	625894	4.349	6.444 #
38) L8 AR-1262-3	8.727	7.701	715835	354334	3.858	4.346
39) L8 AR-1262-4	8.810	7.758	2425501	984813	18.063	7.003 #
40) L8 AR-1262-5	9.440	8.261	148409	242895	1.605	3.732 #
41) L9 AR-1268-1	8.727	7.701	715835	354334	2.149	1.513 #

Data Path : Z:\pestpcbsrv\HPCHEM1\ECD_P\Data\PP052125\
 Data File : PP072271.D
 Signal(s) : Signal #1: ECD1A.ch Signal #2: ECD2B.ch
 Acq On : 21 May 2025 23:22
 Operator : YP\AJ
 Sample : AR1248CCC500
 Misc :
 ALS Vial : 5 Sample Multiplier: 1

Instrument :
 ECD_P
 ClientSampleId :

Integration File signal 1: autoint1.e
 Integration File signal 2: autoint2.e
 Quant Time: May 22 01:52:20 2025
 Quant Method : Z:\pestpcbsrv\HPCHEM1\ECD_P\methods\PP051925.M
 Quant Title : GC EXTRACTABLES
 QLast Update : Tue May 20 03:29:33 2025
 Response via : Initial Calibration
 Integrator: ChemStation

Volume Inj. : 2 µl
 Signal #1 Phase : ZB-MR1 Signal #2 Phase: ZB-MR2
 Signal #1 Info : 30Mx0.32mmx 0.50µ Signal #2 Info : 30M x 0.32mm x 0.25µm

	Compound	RT#1	RT#2	Resp#1	Resp#2	ng/ml	ng/ml
42)	L9 AR-1268-2	8.810	7.758	2425501	984813	8.663	4.762 #
43)	L9 AR-1268-3	9.035	7.972	1454899	315630	6.025	1.864 #
44)	L9 AR-1268-4	9.440	8.261	148409	242895	1.414	3.329 #
45)	L9 AR-1268-5	9.869	8.559	1319256	456760	1.949	1.000 #

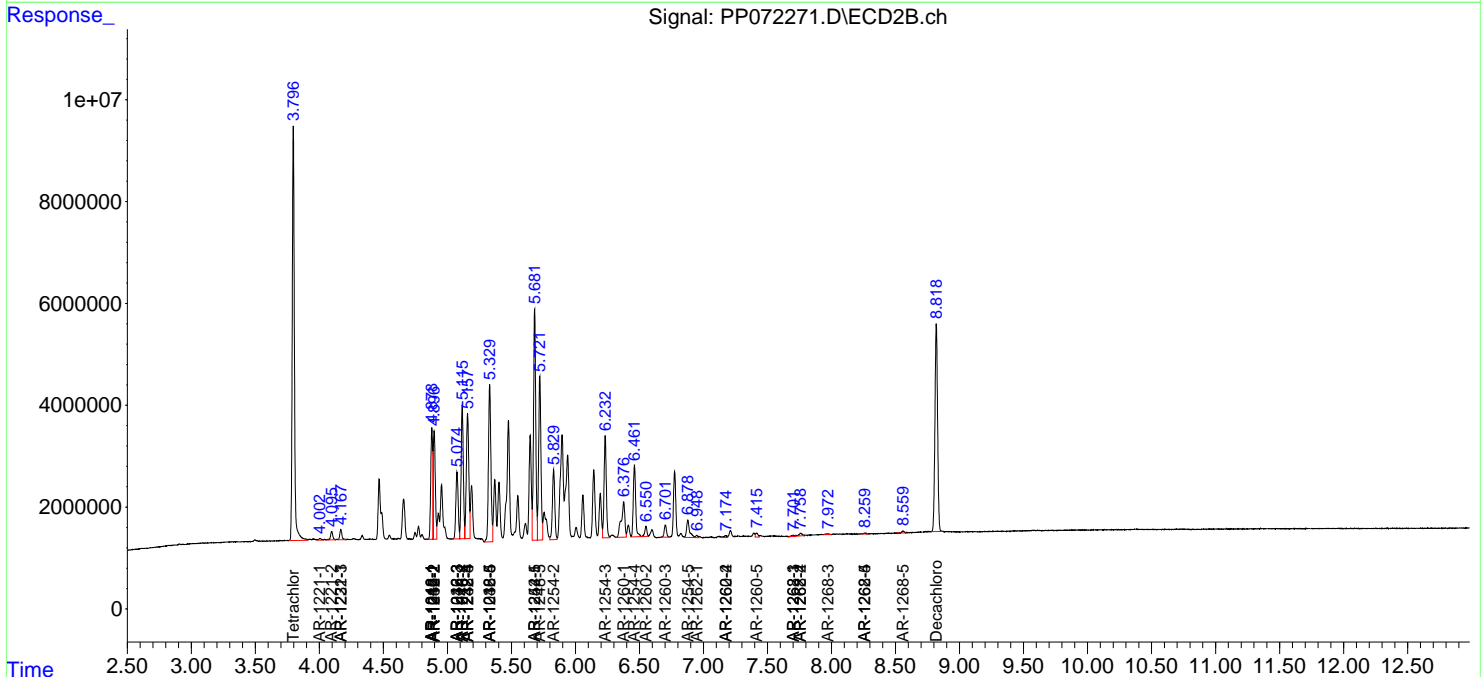
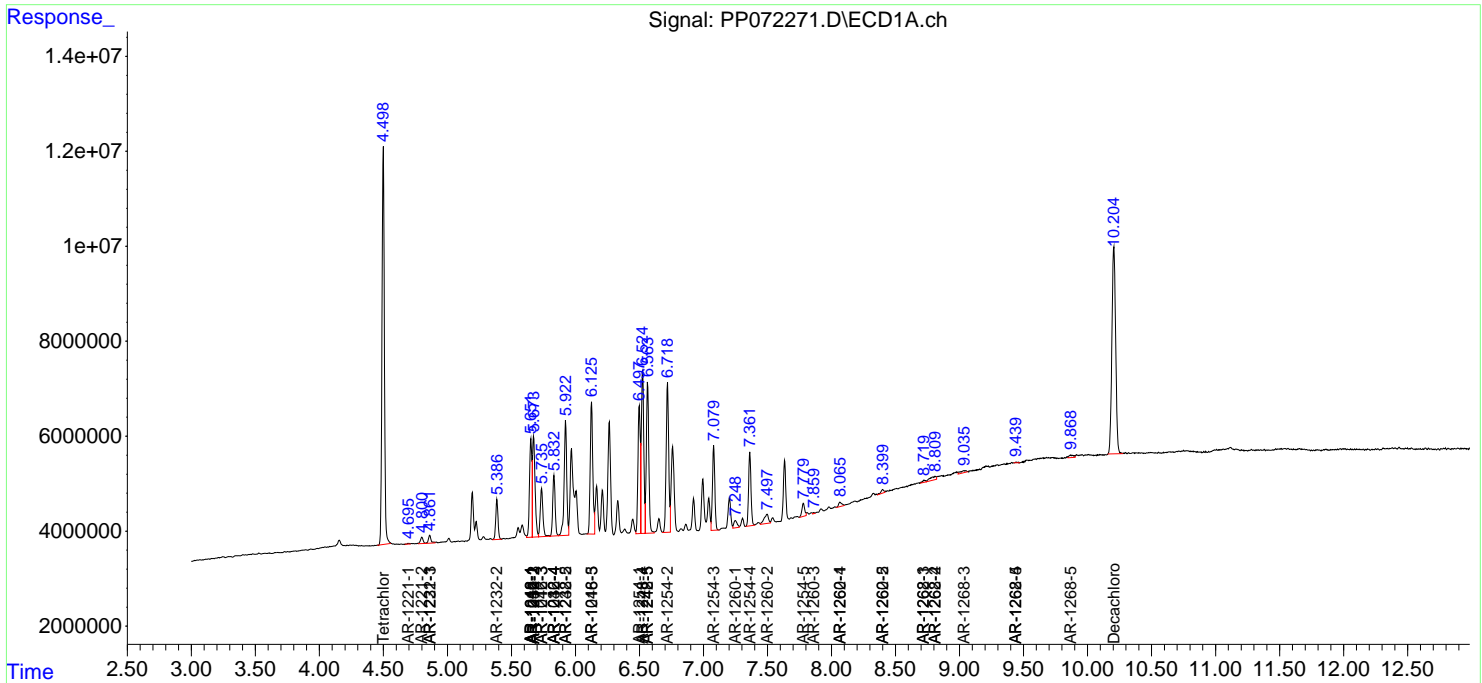
(f)=RT Delta > 1/2 Window (#)=Amounts differ by > 25% (m)=manual int.

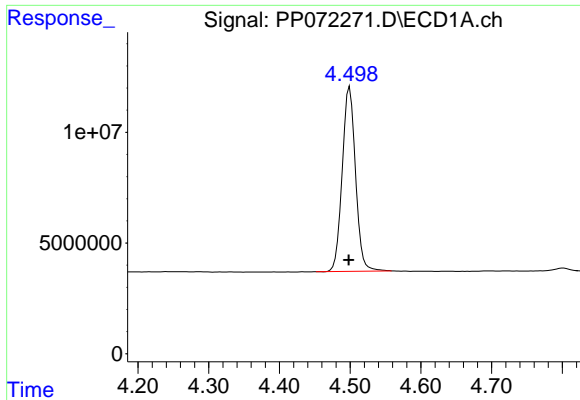
Data Path : Z:\pestpcbsrv\HPCHEM1\ECD_P\Data\PP052125\
 Data File : PP072271.D
 Signal(s) : Signal #1: ECD1A.ch Signal #2: ECD2B.ch
 Acq On : 21 May 2025 23:22
 Operator : YP\AJ
 Sample : AR1248CCC500
 Misc :
 ALS Vial : 5 Sample Multiplier: 1

Instrument :
 ECD_P
 ClientSampleId :

Integration File signal 1: autoint1.e
 Integration File signal 2: autoint2.e
 Quant Time: May 22 01:52:20 2025
 Quant Method : Z:\pestpcbsrv\HPCHEM1\ECD_P\methods\PP051925.M
 Quant Title : GC EXTRACTABLES
 QLast Update : Tue May 20 03:29:33 2025
 Response via : Initial Calibration
 Integrator: ChemStation

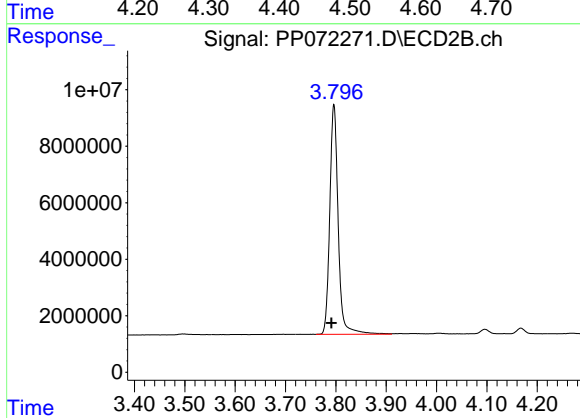
Volume Inj. : 2 µl
 Signal #1 Phase : ZB-MR1 Signal #2 Phase: ZB-MR2
 Signal #1 Info : 30Mx0.32mmx 0.50µ Signal #2 Info : 30M x 0.32mm x 0.25µm



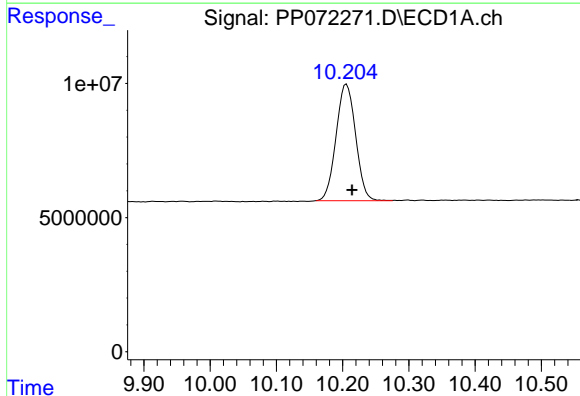


#1 Tetrachloro-m-xylene
 R.T.: 4.499 min
 Delta R.T.: 0.001 min
 Response: 109071344
 Conc: 54.24 ng/ml

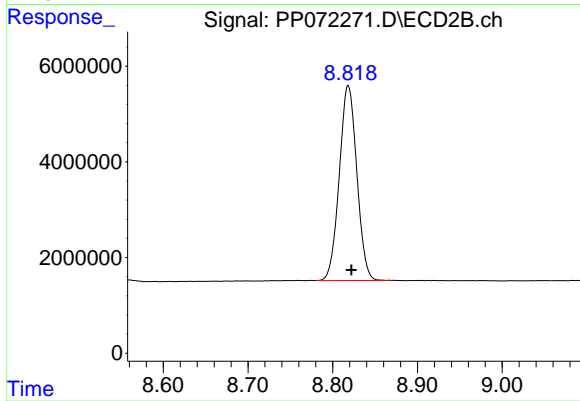
Instrument :
 ECD_P
 ClientSampleId :



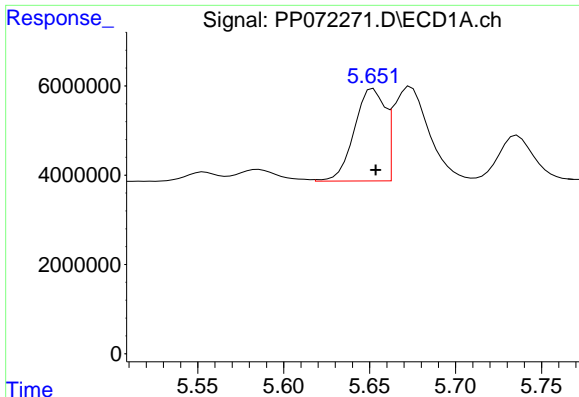
#1 Tetrachloro-m-xylene
 R.T.: 3.796 min
 Delta R.T.: 0.005 min
 Response: 94998712
 Conc: 59.44 ng/ml



#2 Decachlorobiphenyl
 R.T.: 10.206 min
 Delta R.T.: -0.008 min
 Response: 89134660
 Conc: 54.71 ng/ml



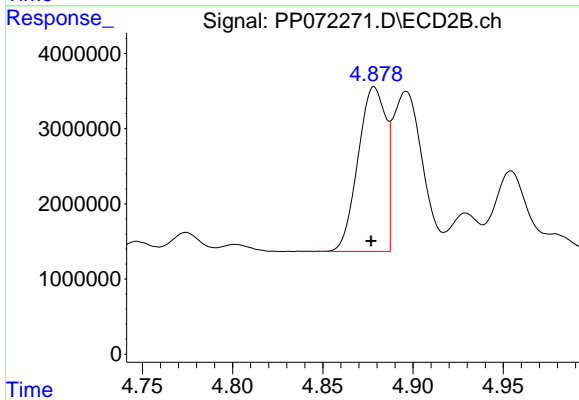
#2 Decachlorobiphenyl
 R.T.: 8.818 min
 Delta R.T.: -0.004 min
 Response: 58651741
 Conc: 55.40 ng/ml



#3 AR-1016-1

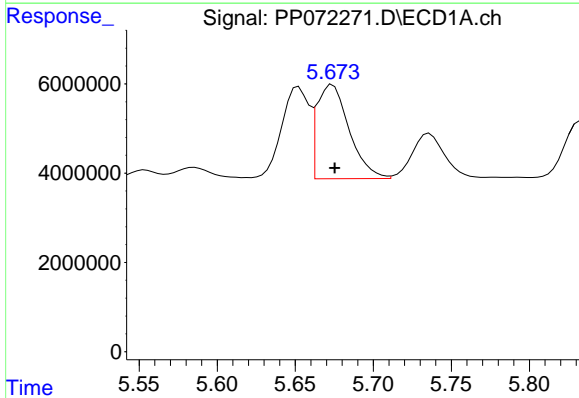
R.T.: 5.652 min
 Delta R.T.: -0.001 min
 Response: 25462698
 Conc: 339.12 ng/ml

Instrument :
 ECD_P
 ClientSampleId :



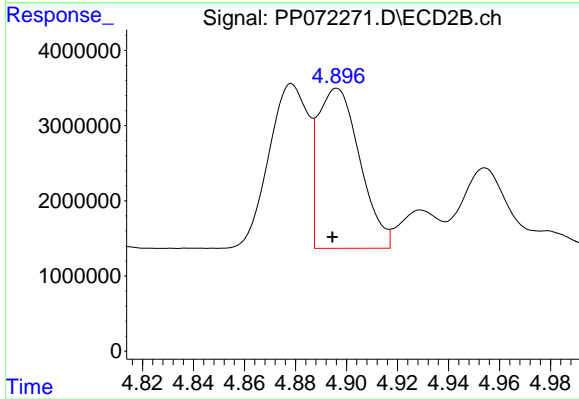
#3 AR-1016-1

R.T.: 4.878 min
 Delta R.T.: 0.002 min
 Response: 23466525
 Conc: 382.01 ng/ml



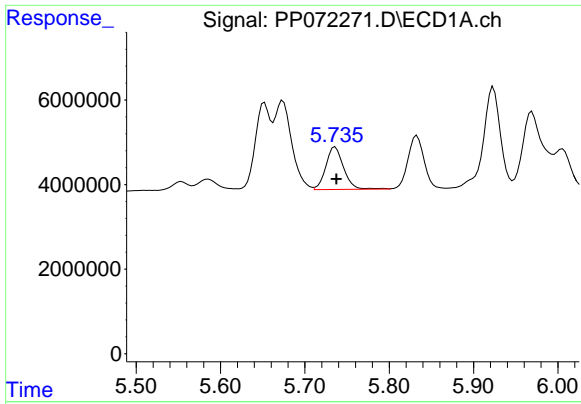
#4 AR-1016-2

R.T.: 5.674 min
 Delta R.T.: -0.001 min
 Response: 30453736
 Conc: 284.64 ng/ml



#4 AR-1016-2

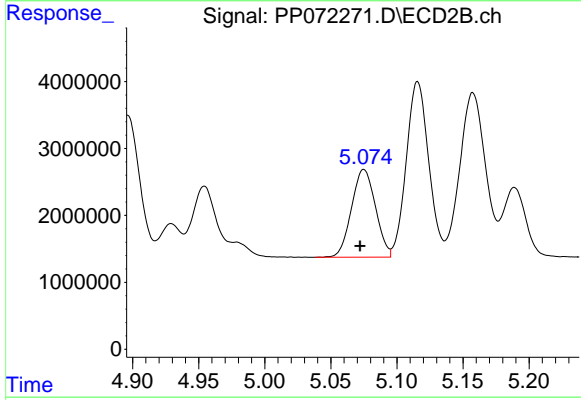
R.T.: 4.896 min
 Delta R.T.: 0.002 min
 Response: 24216689
 Conc: 275.85 ng/ml



#5 AR-1016-3

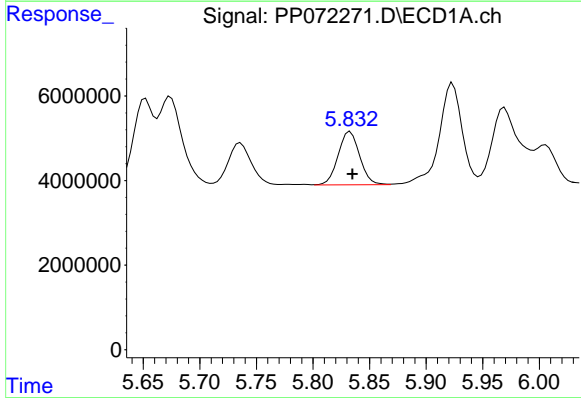
R.T.: 5.736 min
 Delta R.T.: -0.001 min
 Response: 14745714
 Conc: 224.90 ng/ml

Instrument :
 ECD_P
 ClientSampleId :



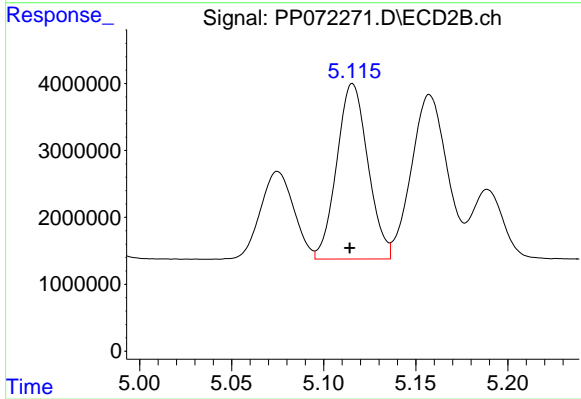
#5 AR-1016-3

R.T.: 5.075 min
 Delta R.T.: 0.003 min
 Response: 16549508
 Conc: 347.28 ng/ml



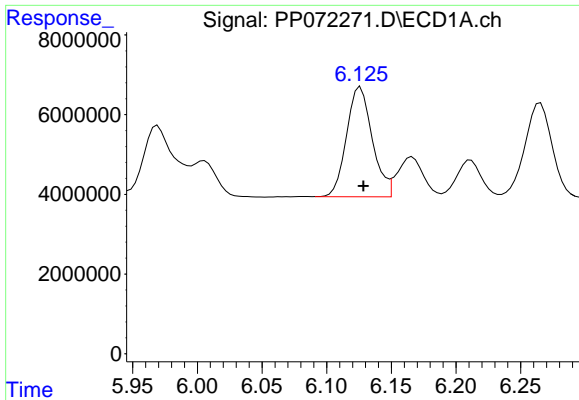
#6 AR-1016-4

R.T.: 5.833 min
 Delta R.T.: -0.002 min
 Response: 16681301
 Conc: 313.15 ng/ml



#6 AR-1016-4

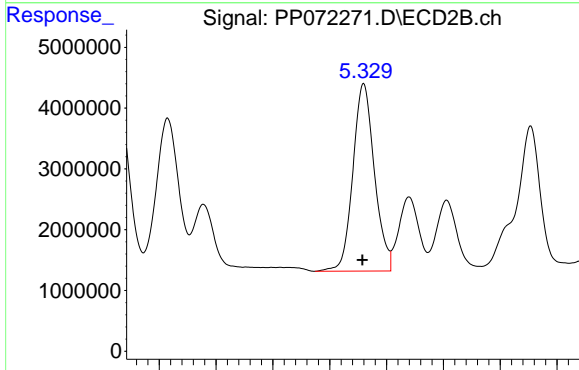
R.T.: 5.116 min
 Delta R.T.: 0.002 min
 Response: 30876685
 Conc: 811.58 ng/ml



#7 AR-1016-5

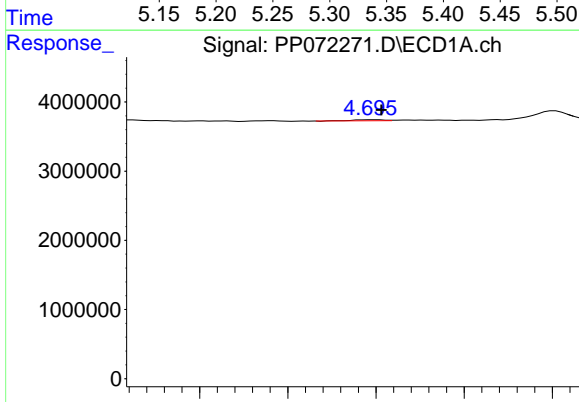
R.T.: 6.126 min
 Delta R.T.: -0.002 min
 Response: 38076939
 Conc: 778.52 ng/ml

Instrument :
 ECD_P
 ClientSampleId :



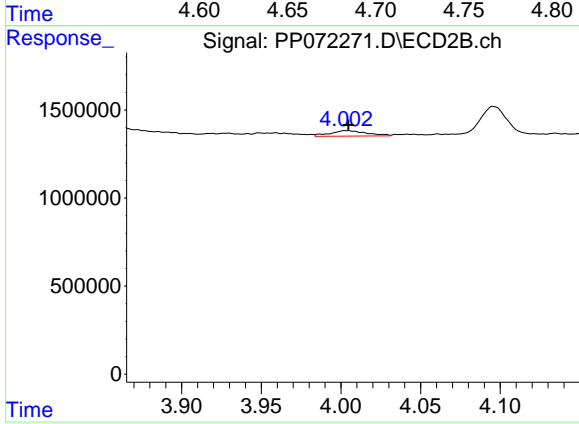
#7 AR-1016-5

R.T.: 5.330 min
 Delta R.T.: 0.001 min
 Response: 40637553
 Conc: 815.62 ng/ml



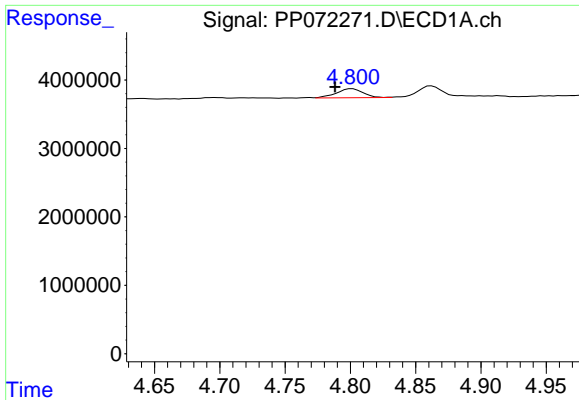
#8 AR-1221-1

R.T.: 4.697 min
 Delta R.T.: -0.006 min
 Response: 178448
 Conc: 7.10 ng/ml



#8 AR-1221-1

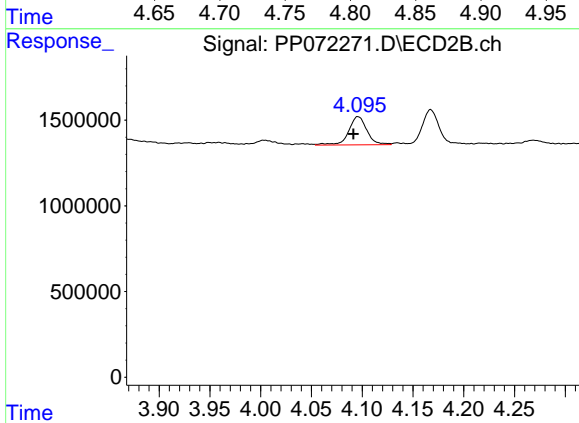
R.T.: 4.004 min
 Delta R.T.: -0.001 min
 Response: 494251
 Conc: 21.37 ng/ml



#9 AR-1221-2

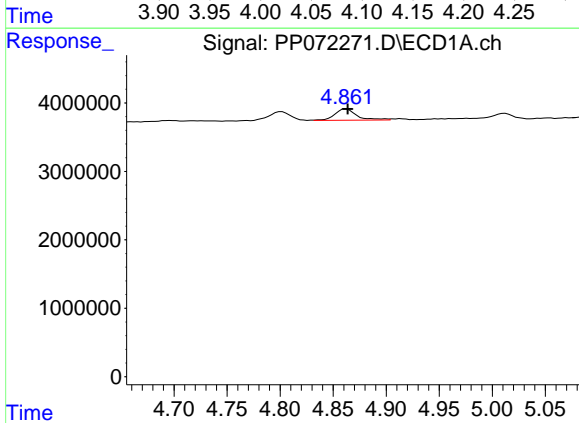
R.T.: 4.801 min
 Delta R.T.: 0.013 min
 Response: 1894212
 Conc: 105.34 ng/ml

Instrument :
 ECD_P
 ClientSampleId :



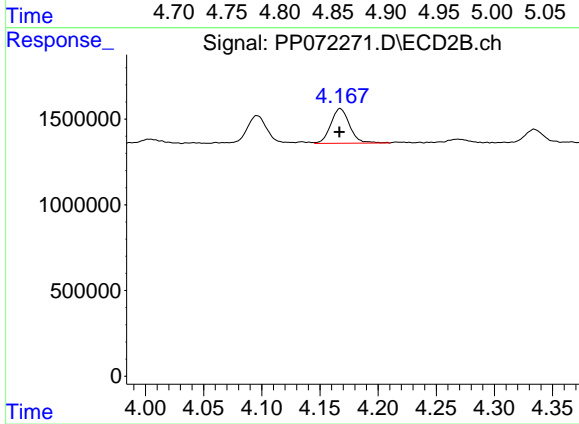
#9 AR-1221-2

R.T.: 4.096 min
 Delta R.T.: 0.005 min
 Response: 2067128
 Conc: 116.80 ng/ml



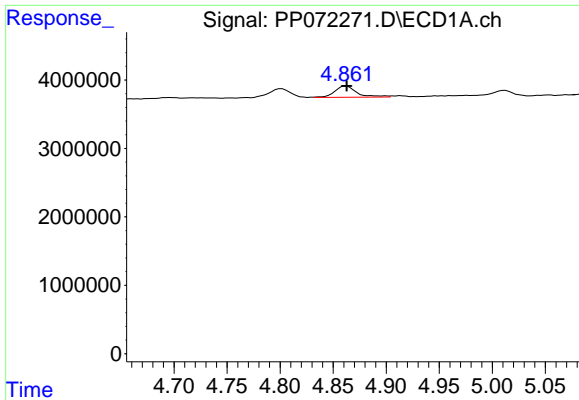
#10 AR-1221-3

R.T.: 4.862 min
 Delta R.T.: -0.002 min
 Response: 2367585
 Conc: 40.46 ng/ml



#10 AR-1221-3

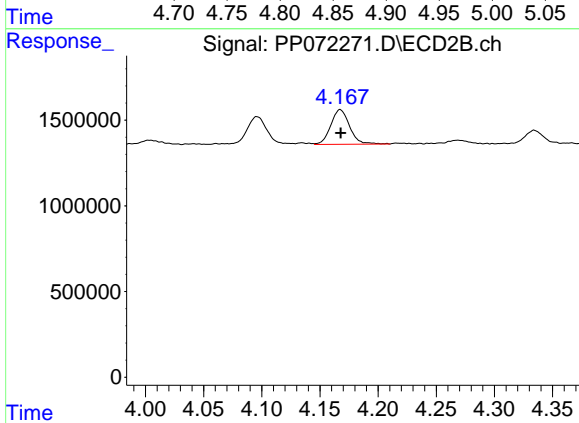
R.T.: 4.167 min
 Delta R.T.: 0.000 min
 Response: 2281643
 Conc: 43.65 ng/ml



#11 AR-1232-1

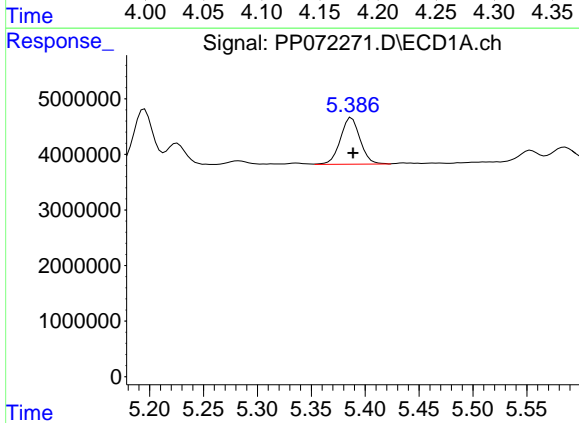
R.T.: 4.862 min
 Delta R.T.: 0.000 min
 Response: 2367585
 Conc: 50.26 ng/ml

Instrument :
 ECD_P
 ClientSampleId :



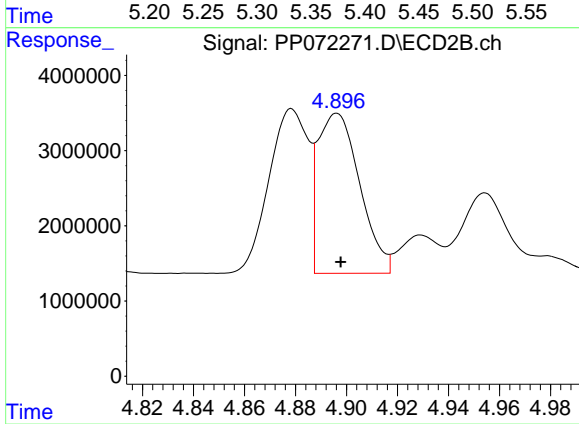
#11 AR-1232-1

R.T.: 4.167 min
 Delta R.T.: 0.000 min
 Response: 2281643
 Conc: 52.64 ng/ml



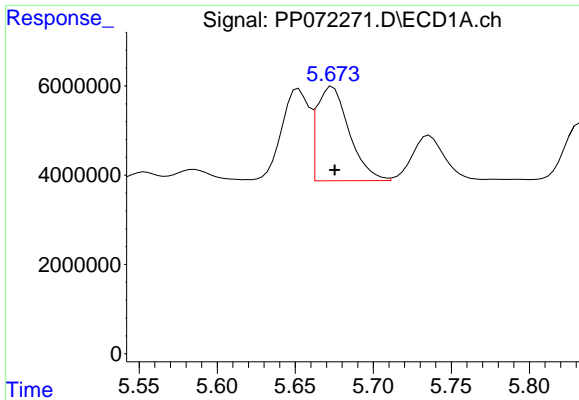
#12 AR-1232-2

R.T.: 5.387 min
 Delta R.T.: -0.002 min
 Response: 10629306
 Conc: 456.52 ng/ml



#12 AR-1232-2

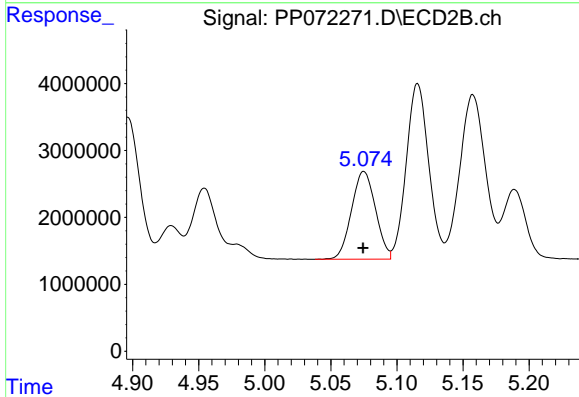
R.T.: 4.896 min
 Delta R.T.: -0.002 min
 Response: 24216689
 Conc: 548.13 ng/ml



#13 AR-1232-3

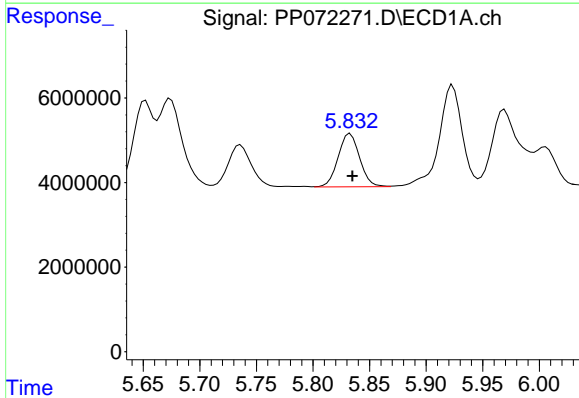
R.T.: 5.674 min
 Delta R.T.: -0.001 min
 Response: 30453736
 Conc: 608.31 ng/ml

Instrument :
 ECD_P
 ClientSampleId :



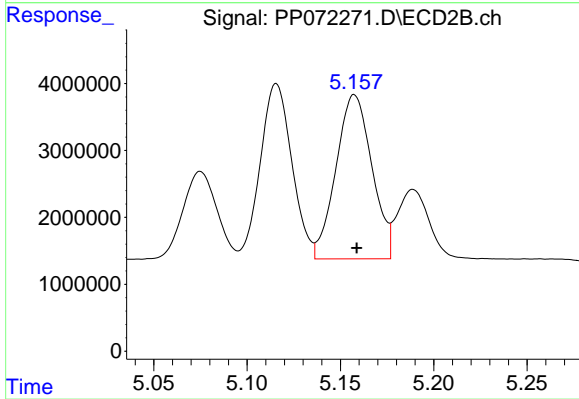
#13 AR-1232-3

R.T.: 5.075 min
 Delta R.T.: 0.000 min
 Response: 16549508
 Conc: 707.76 ng/ml



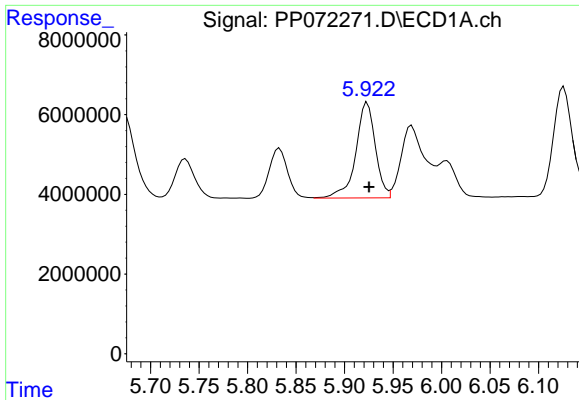
#14 AR-1232-4

R.T.: 5.833 min
 Delta R.T.: -0.002 min
 Response: 16681301
 Conc: 664.62 ng/ml



#14 AR-1232-4

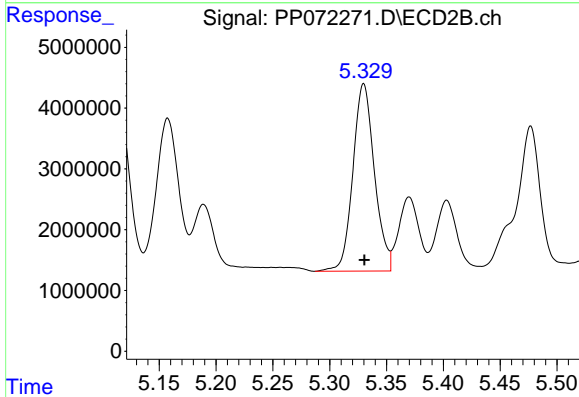
R.T.: 5.157 min
 Delta R.T.: -0.001 min
 Response: 32893301
 Conc: 1587.50 ng/ml



#15 AR-1232-5

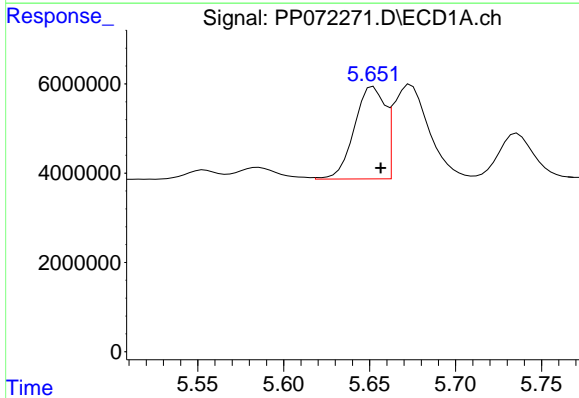
R.T.: 5.924 min
 Delta R.T.: -0.002 min
 Response: 33654861
 Conc: 1920.99 ng/ml

Instrument :
 ECD_P
 ClientSampleId :



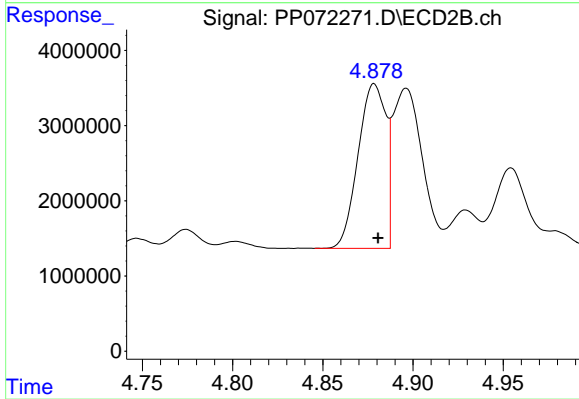
#15 AR-1232-5

R.T.: 5.330 min
 Delta R.T.: 0.000 min
 Response: 40637553
 Conc: 1755.07 ng/ml



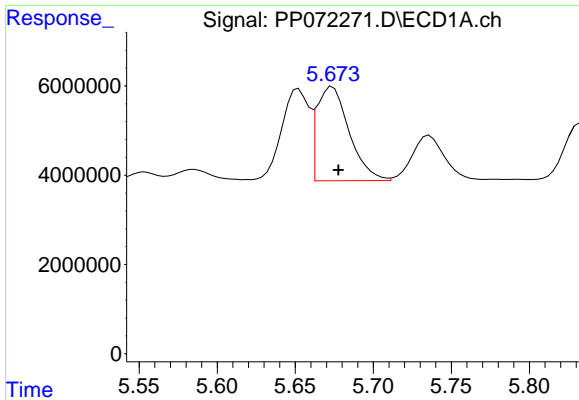
#16 AR-1242-1

R.T.: 5.652 min
 Delta R.T.: -0.004 min
 Response: 25462698
 Conc: 406.77 ng/ml



#16 AR-1242-1

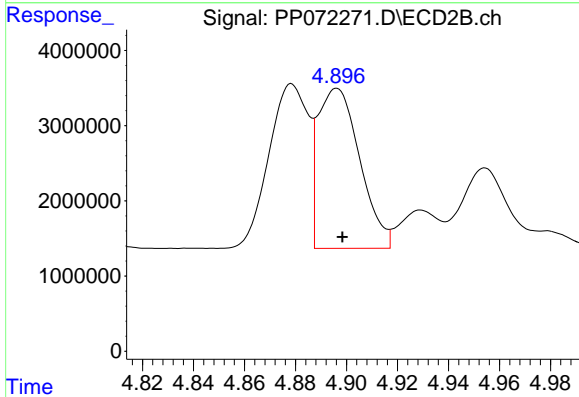
R.T.: 4.878 min
 Delta R.T.: -0.002 min
 Response: 23466525
 Conc: 450.34 ng/ml



#17 AR-1242-2

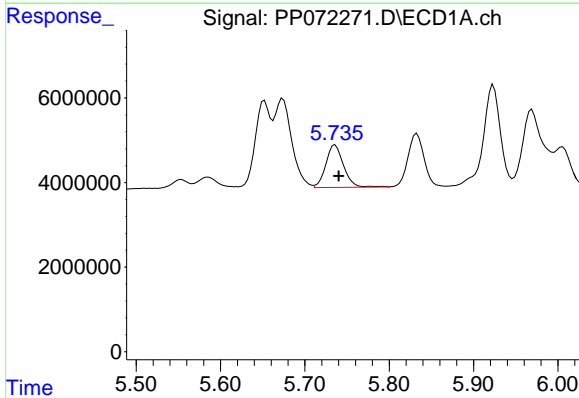
R.T.: 5.674 min
 Delta R.T.: -0.004 min
 Response: 30453736
 Conc: 350.93 ng/ml

Instrument :
 ECD_P
 ClientSampleId :



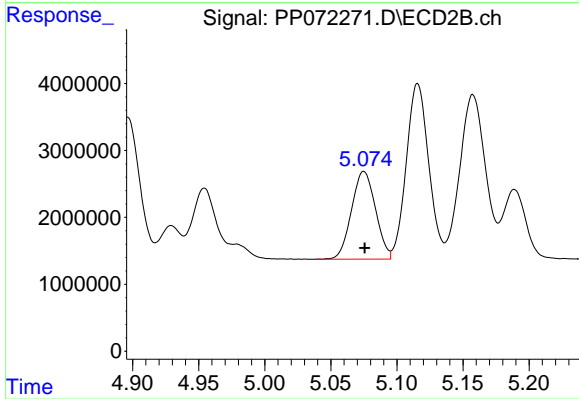
#17 AR-1242-2

R.T.: 4.896 min
 Delta R.T.: -0.002 min
 Response: 24216689
 Conc: 329.50 ng/ml



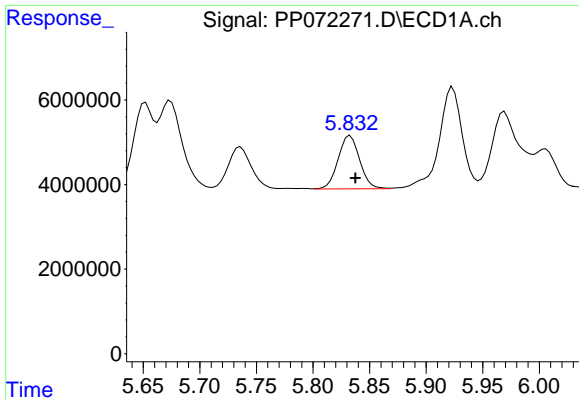
#18 AR-1242-3

R.T.: 5.736 min
 Delta R.T.: -0.004 min
 Response: 14745714
 Conc: 267.78 ng/ml



#18 AR-1242-3

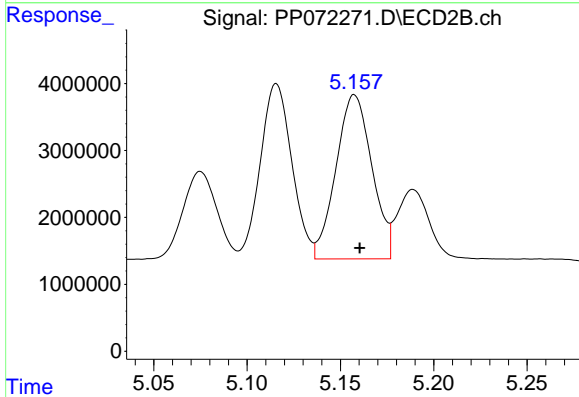
R.T.: 5.075 min
 Delta R.T.: 0.000 min
 Response: 16549508
 Conc: 422.98 ng/ml



#19 AR-1242-4

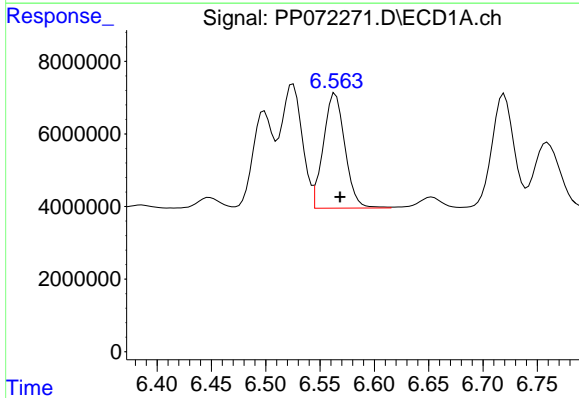
R.T.: 5.833 min
 Delta R.T.: -0.005 min
 Response: 16681301
 Conc: 376.14 ng/ml

Instrument :
 ECD_P
 ClientSampleId :



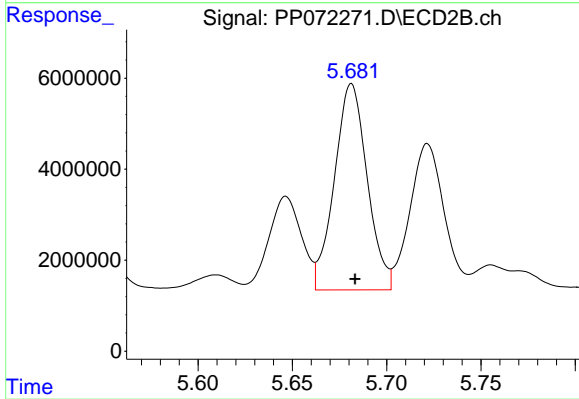
#19 AR-1242-4

R.T.: 5.157 min
 Delta R.T.: -0.003 min
 Response: 32893301
 Conc: 875.22 ng/ml



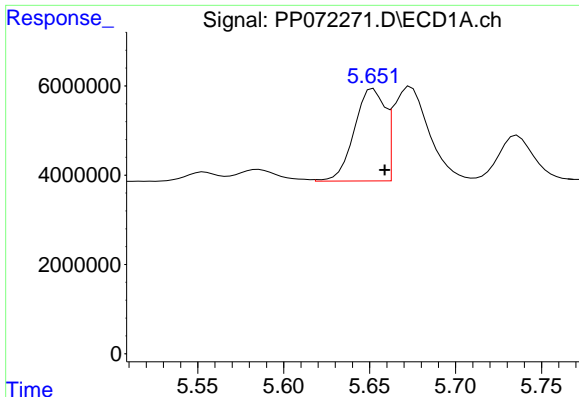
#20 AR-1242-5

R.T.: 6.564 min
 Delta R.T.: -0.004 min
 Response: 43713959
 Conc: 857.39 ng/ml



#20 AR-1242-5

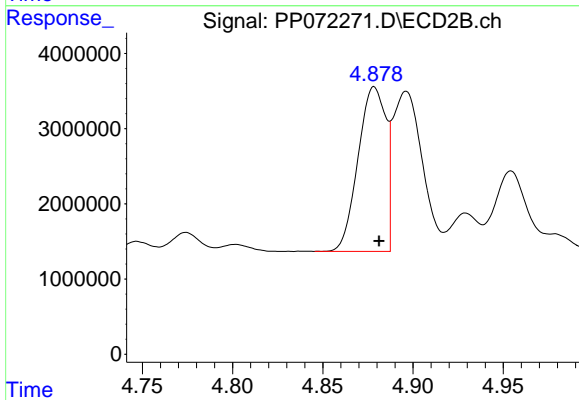
R.T.: 5.681 min
 Delta R.T.: -0.002 min
 Response: 54871374
 Conc: 1137.05 ng/ml



#21 AR-1248-1

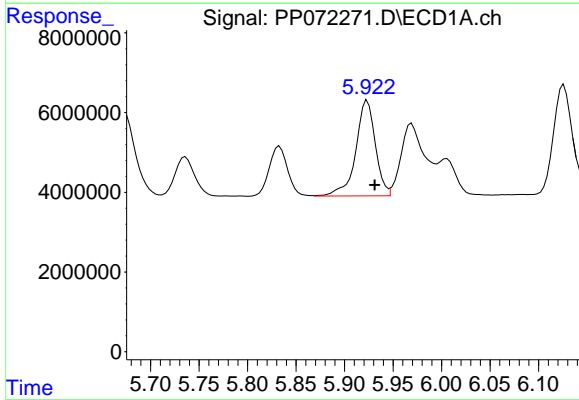
R.T.: 5.652 min
 Delta R.T.: -0.007 min
 Response: 25462698
 Conc: 526.14 ng/ml

Instrument :
 ECD_P
 ClientSampleId :



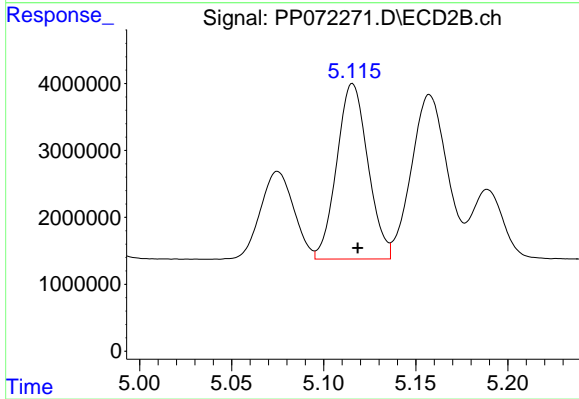
#21 AR-1248-1

R.T.: 4.878 min
 Delta R.T.: -0.003 min
 Response: 23466525
 Conc: 541.68 ng/ml



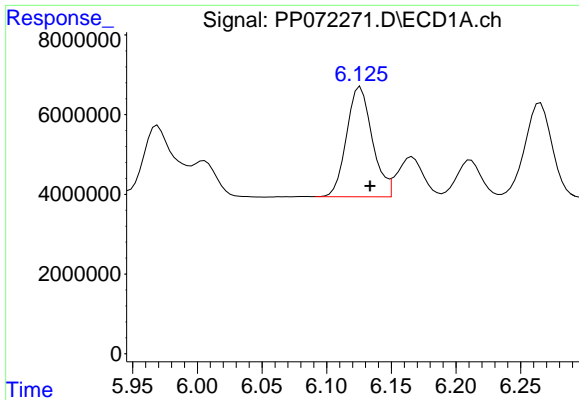
#22 AR-1248-2

R.T.: 5.924 min
 Delta R.T.: -0.007 min
 Response: 33654861
 Conc: 554.99 ng/ml



#22 AR-1248-2

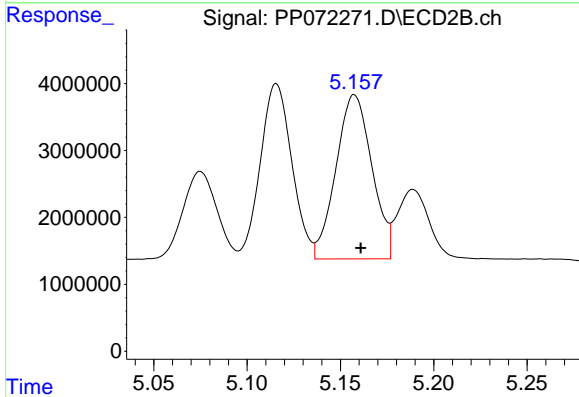
R.T.: 5.116 min
 Delta R.T.: -0.003 min
 Response: 30876685
 Conc: 546.71 ng/ml



#23 AR-1248-3

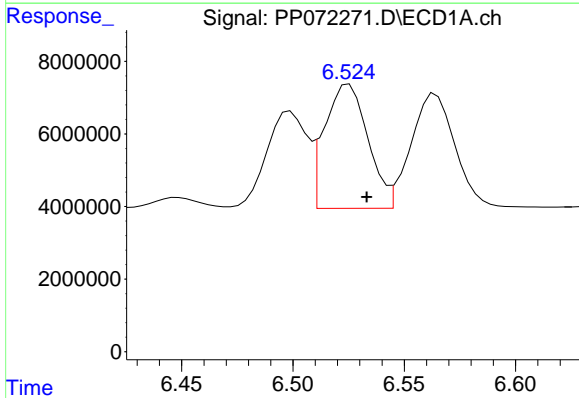
R.T.: 6.126 min
 Delta R.T.: -0.008 min
 Response: 38076939
 Conc: 575.35 ng/ml

Instrument :
 ECD_P
 ClientSampleId :



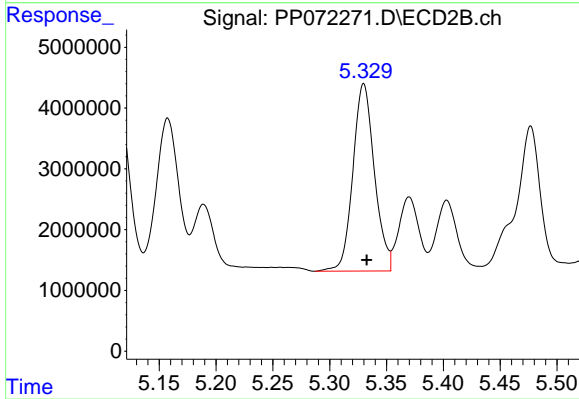
#23 AR-1248-3

R.T.: 5.157 min
 Delta R.T.: -0.003 min
 Response: 32893301
 Conc: 556.50 ng/ml



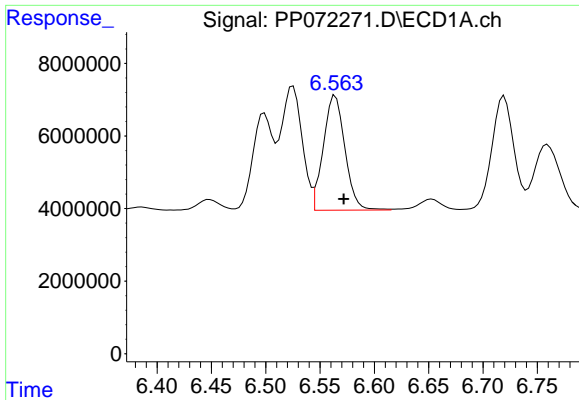
#24 AR-1248-4

R.T.: 6.525 min
 Delta R.T.: -0.008 min
 Response: 46295501
 Conc: 529.74 ng/ml



#24 AR-1248-4

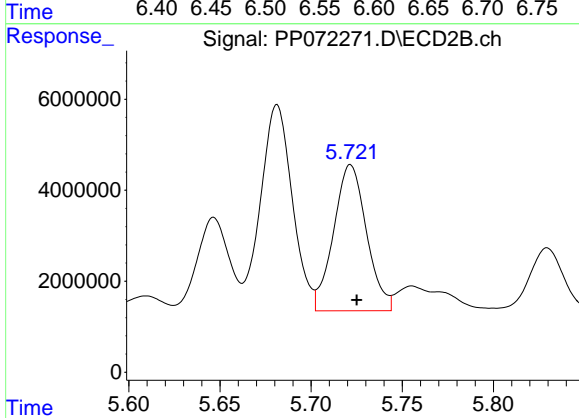
R.T.: 5.330 min
 Delta R.T.: -0.003 min
 Response: 40637553
 Conc: 583.43 ng/ml



#25 AR-1248-5

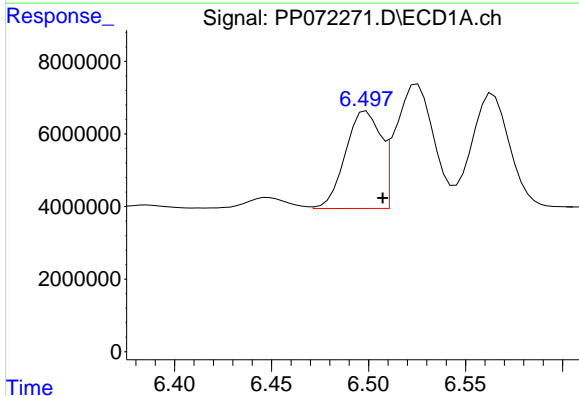
R.T.: 6.564 min
 Delta R.T.: -0.008 min
 Response: 43713959
 Conc: 526.51 ng/ml

Instrument :
 ECD_P
 ClientSampleId :



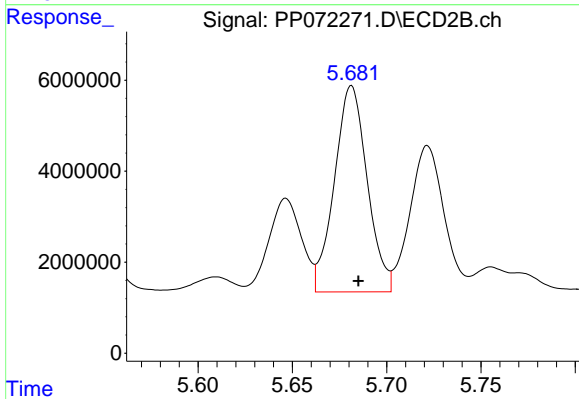
#25 AR-1248-5

R.T.: 5.722 min
 Delta R.T.: -0.003 min
 Response: 40441004
 Conc: 579.89 ng/ml



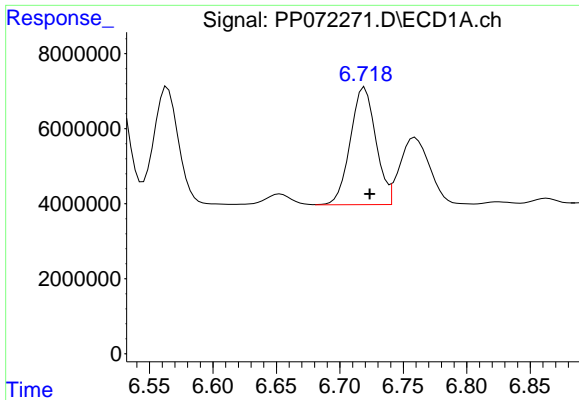
#26 AR-1254-1

R.T.: 6.499 min
 Delta R.T.: -0.008 min
 Response: 33942742
 Conc: 394.67 ng/ml



#26 AR-1254-1

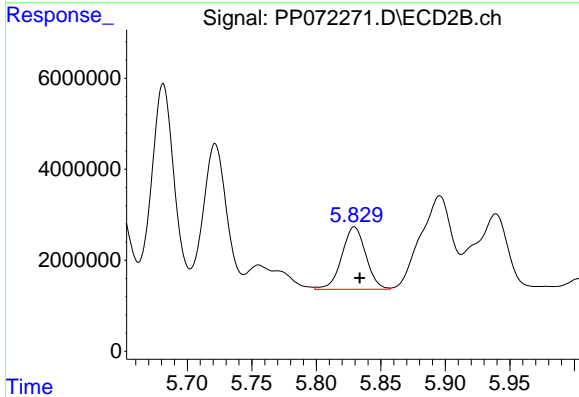
R.T.: 5.681 min
 Delta R.T.: -0.004 min
 Response: 54871374
 Conc: 548.96 ng/ml



#27 AR-1254-2

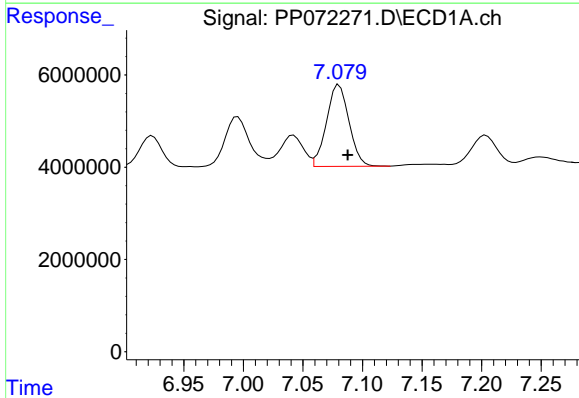
R.T.: 6.720 min
 Delta R.T.: -0.004 min
 Response: 43712344
 Conc: 334.51 ng/ml

Instrument :
 ECD_P
 ClientSampleId :



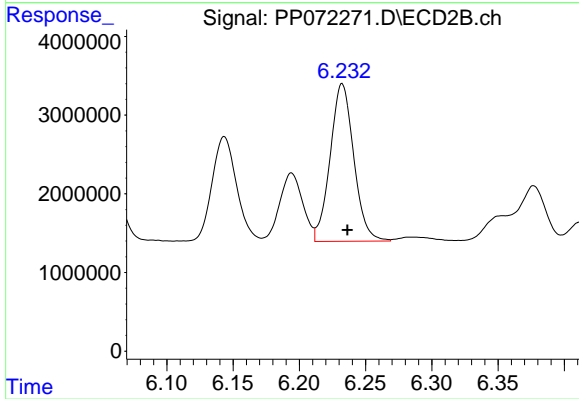
#27 AR-1254-2

R.T.: 5.830 min
 Delta R.T.: -0.004 min
 Response: 17774393
 Conc: 205.94 ng/ml



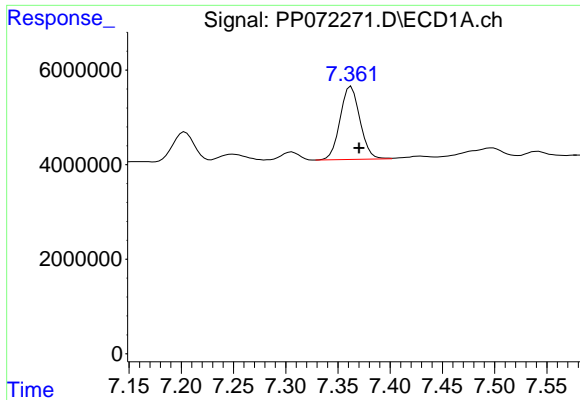
#28 AR-1254-3

R.T.: 7.080 min
 Delta R.T.: -0.007 min
 Response: 23213409
 Conc: 175.86 ng/ml



#28 AR-1254-3

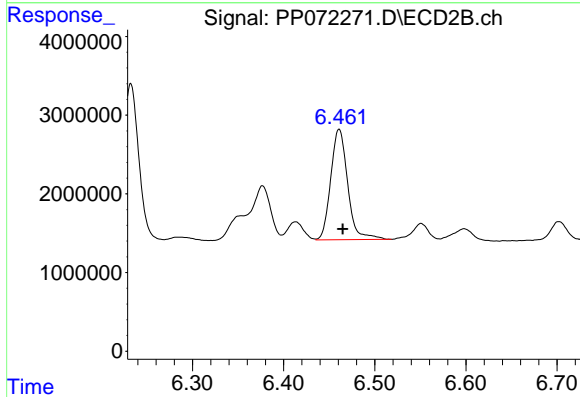
R.T.: 6.232 min
 Delta R.T.: -0.004 min
 Response: 24874528
 Conc: 193.39 ng/ml



#29 AR-1254-4

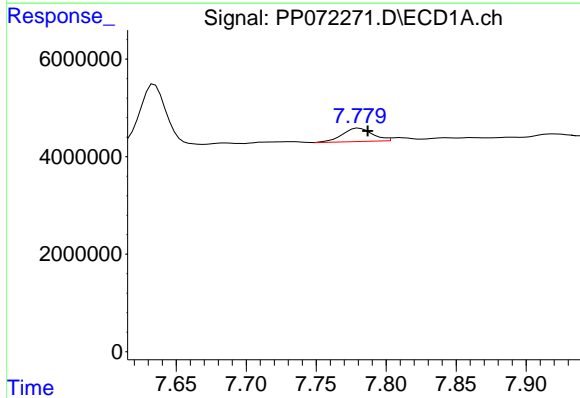
R.T.: 7.363 min
 Delta R.T.: -0.008 min
 Response: 20370595
 Conc: 156.08 ng/ml

Instrument :
 ECD_P
 ClientSampleId :



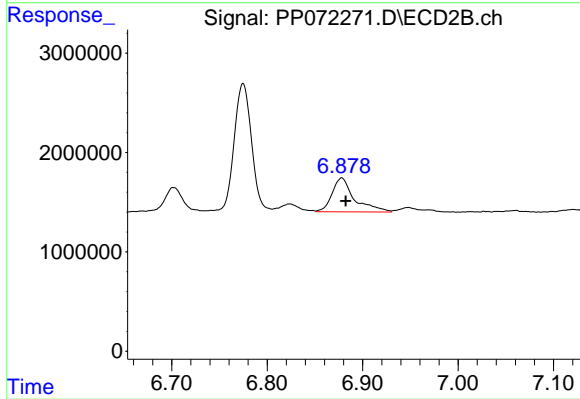
#29 AR-1254-4

R.T.: 6.461 min
 Delta R.T.: -0.004 min
 Response: 18167940
 Conc: 213.00 ng/ml



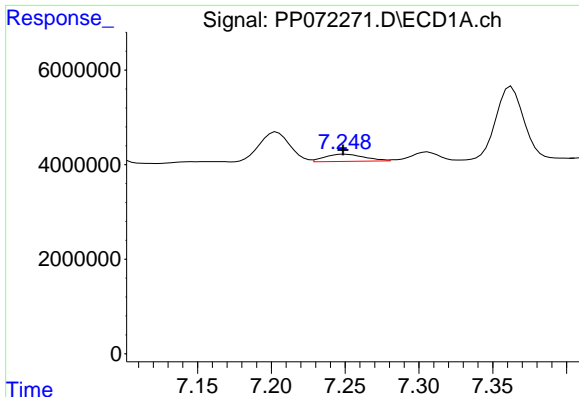
#30 AR-1254-5

R.T.: 7.781 min
 Delta R.T.: -0.006 min
 Response: 4065107
 Conc: 36.54 ng/ml



#30 AR-1254-5

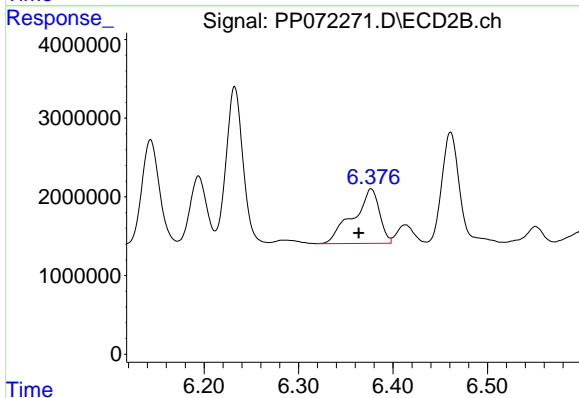
R.T.: 6.878 min
 Delta R.T.: -0.004 min
 Response: 5534629
 Conc: 48.83 ng/ml



#31 AR-1260-1

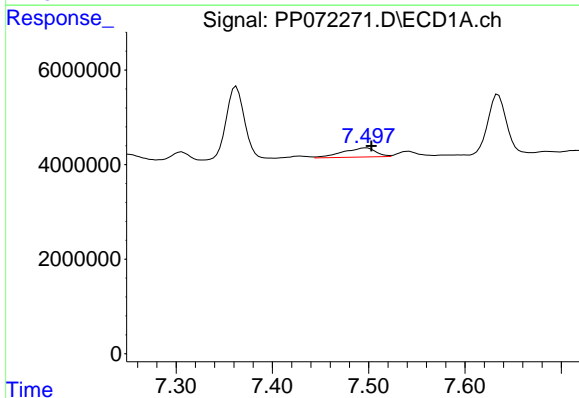
R.T.: 7.249 min
 Delta R.T.: 0.000 min
 Response: 2827822
 Conc: 30.21 ng/ml

Instrument :
 ECD_P
 ClientSampleId :



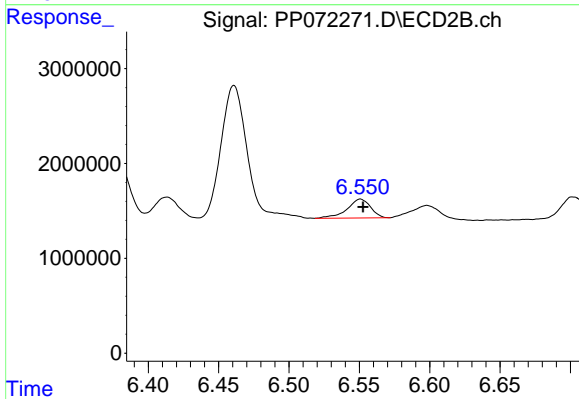
#31 AR-1260-1

R.T.: 6.377 min
 Delta R.T.: 0.013 min
 Response: 13359338
 Conc: 167.51 ng/ml



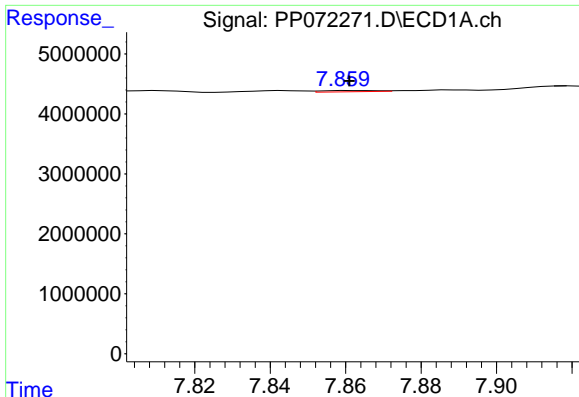
#32 AR-1260-2

R.T.: 7.498 min
 Delta R.T.: -0.005 min
 Response: 4641425
 Conc: 32.35 ng/ml



#32 AR-1260-2

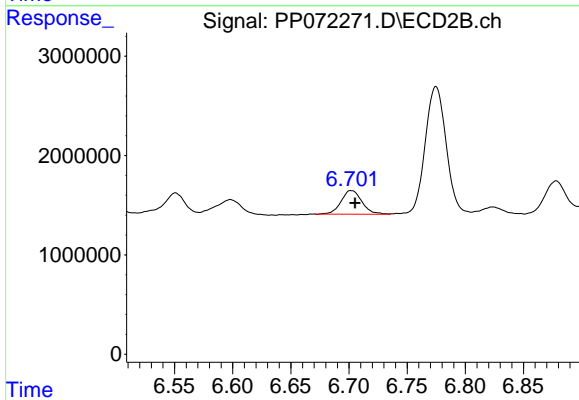
R.T.: 6.551 min
 Delta R.T.: -0.002 min
 Response: 2313407
 Conc: 22.81 ng/ml



#33 AR-1260-3

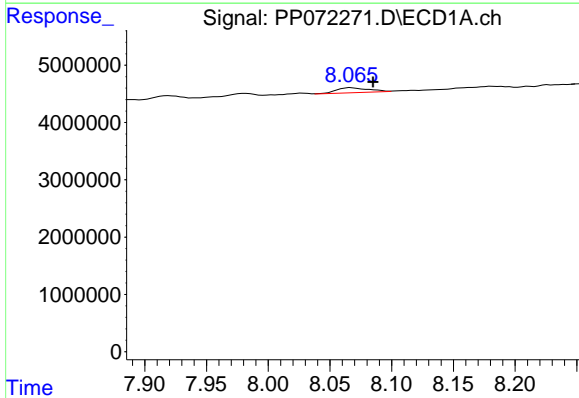
R.T.: 7.861 min
 Delta R.T.: 0.000 min
 Response: 213462
 Conc: 1.87 ng/ml

Instrument :
 ECD_P
 ClientSampleId :



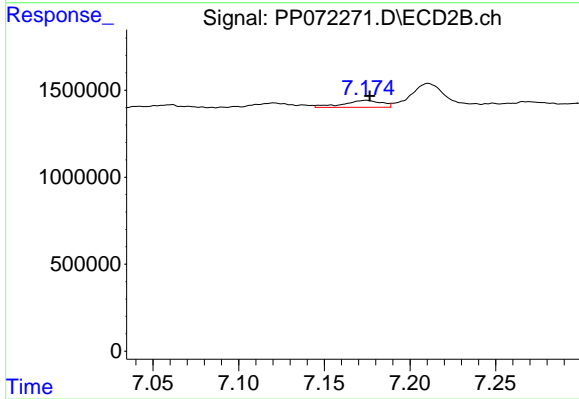
#33 AR-1260-3

R.T.: 6.702 min
 Delta R.T.: -0.003 min
 Response: 2967574
 Conc: 34.15 ng/ml



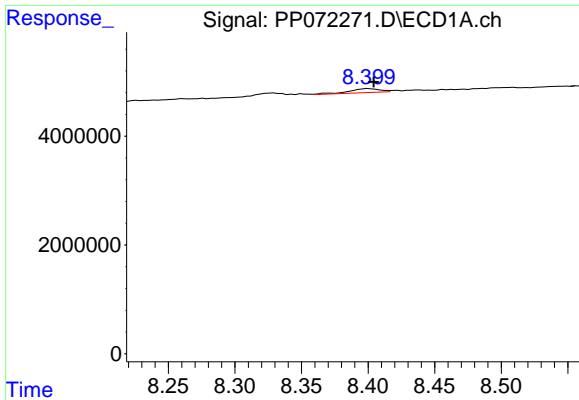
#34 AR-1260-4

R.T.: 8.067 min
 Delta R.T.: -0.018 min
 Response: 1623249
 Conc: 15.13 ng/ml



#34 AR-1260-4

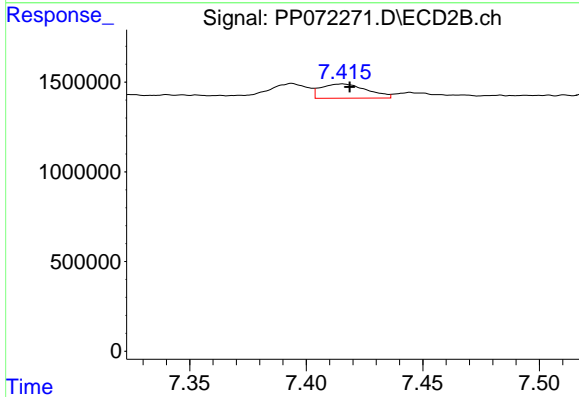
R.T.: 7.174 min
 Delta R.T.: -0.002 min
 Response: 625894
 Conc: 8.68 ng/ml



#35 AR-1260-5

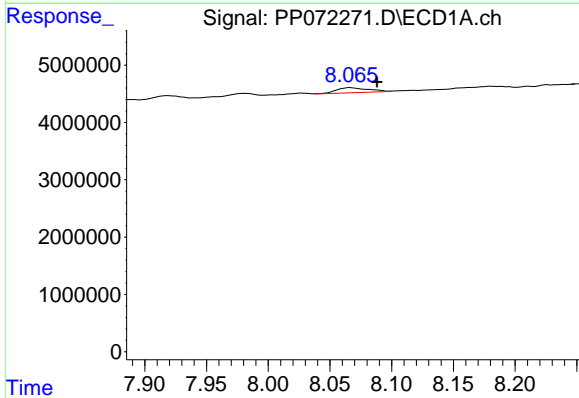
R.T.: 8.400 min
 Delta R.T.: -0.004 min
 Response: 1184468
 Conc: 5.00 ng/ml

Instrument :
 ECD_P
 ClientSampleId :



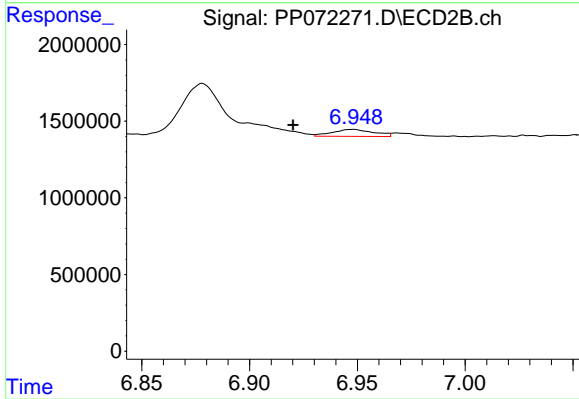
#35 AR-1260-5

R.T.: 7.415 min
 Delta R.T.: -0.003 min
 Response: 1088933
 Conc: 6.27 ng/ml



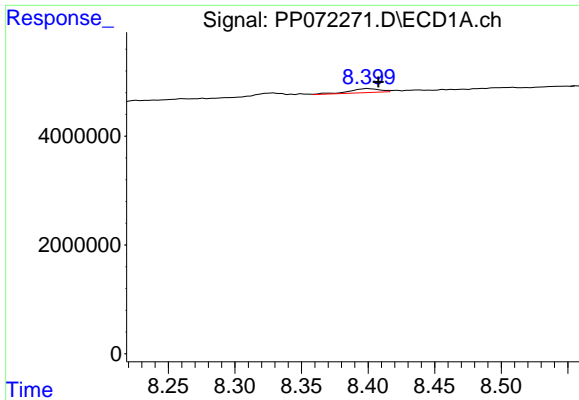
#36 AR-1262-1

R.T.: 8.067 min
 Delta R.T.: -0.021 min
 Response: 1623249
 Conc: 12.18 ng/ml



#36 AR-1262-1

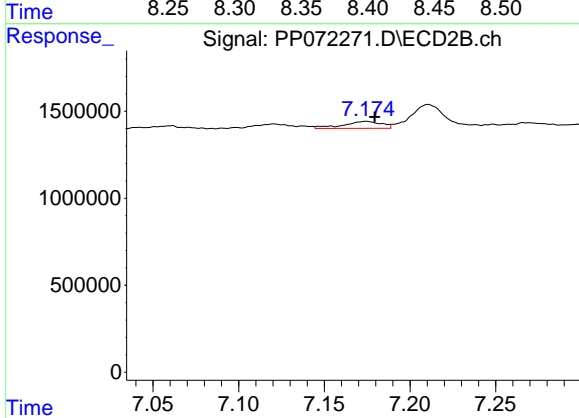
R.T.: 6.948 min
 Delta R.T.: 0.028 min
 Response: 607300
 Conc: 5.37 ng/ml



#37 AR-1262-2

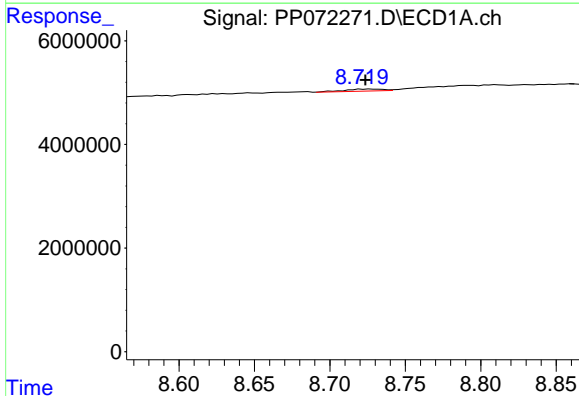
R.T.: 8.400 min
 Delta R.T.: -0.007 min
 Response: 1184468
 Conc: 4.35 ng/ml

Instrument :
 ECD_P
 ClientSampleId :



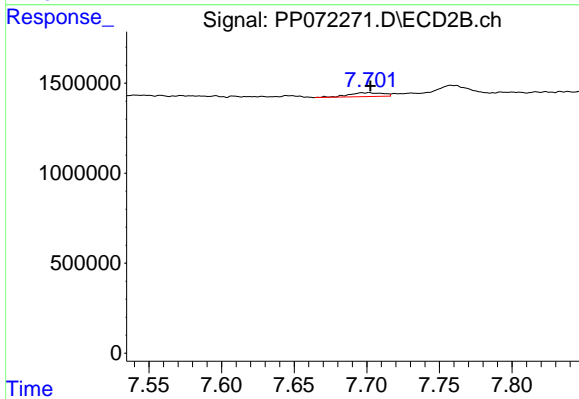
#37 AR-1262-2

R.T.: 7.174 min
 Delta R.T.: -0.005 min
 Response: 625894
 Conc: 6.44 ng/ml



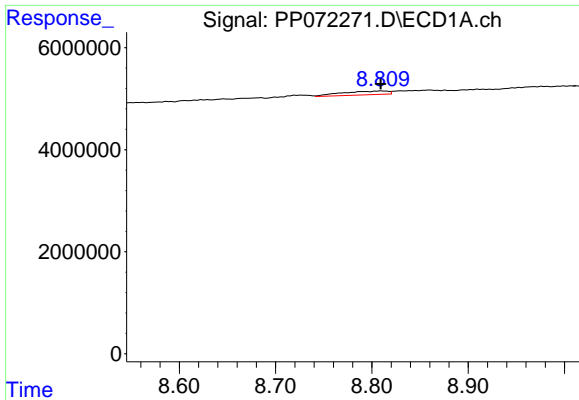
#38 AR-1262-3

R.T.: 8.727 min
 Delta R.T.: 0.004 min
 Response: 715835
 Conc: 3.86 ng/ml



#38 AR-1262-3

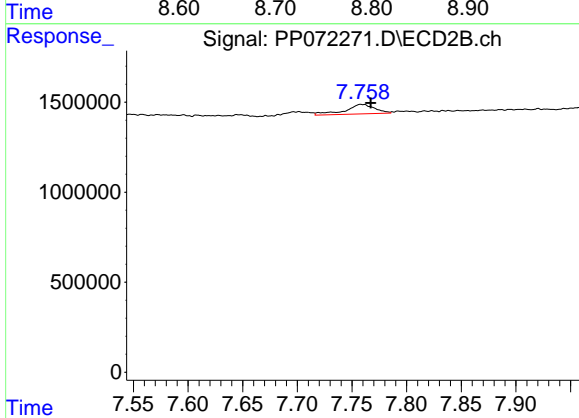
R.T.: 7.701 min
 Delta R.T.: -0.001 min
 Response: 354334
 Conc: 4.35 ng/ml



#39 AR-1262-4

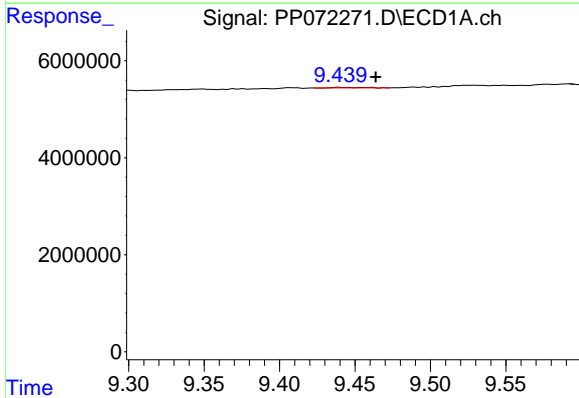
R.T.: 8.810 min
 Delta R.T.: 0.001 min
 Response: 2425501
 Conc: 18.06 ng/ml

Instrument :
 ECD_P
 ClientSampleId :



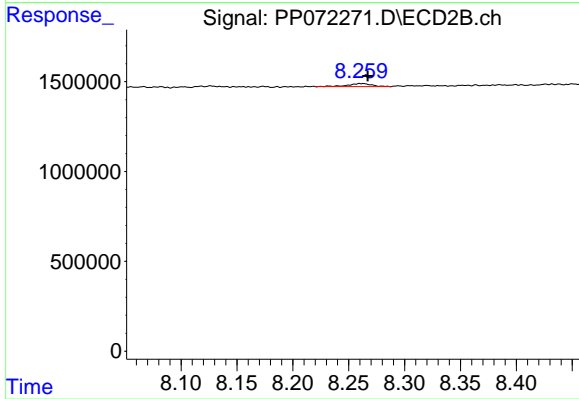
#39 AR-1262-4

R.T.: 7.758 min
 Delta R.T.: -0.009 min
 Response: 984813
 Conc: 7.00 ng/ml



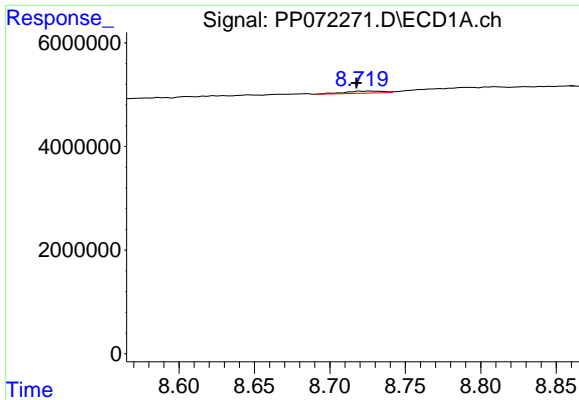
#40 AR-1262-5

R.T.: 9.440 min
 Delta R.T.: -0.024 min
 Response: 148409
 Conc: 1.61 ng/ml



#40 AR-1262-5

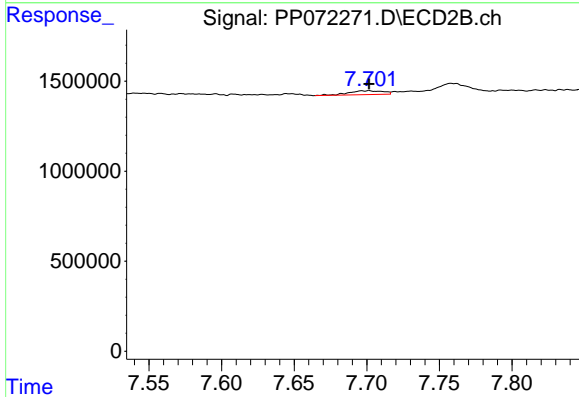
R.T.: 8.261 min
 Delta R.T.: -0.006 min
 Response: 242895
 Conc: 3.73 ng/ml



#41 AR-1268-1

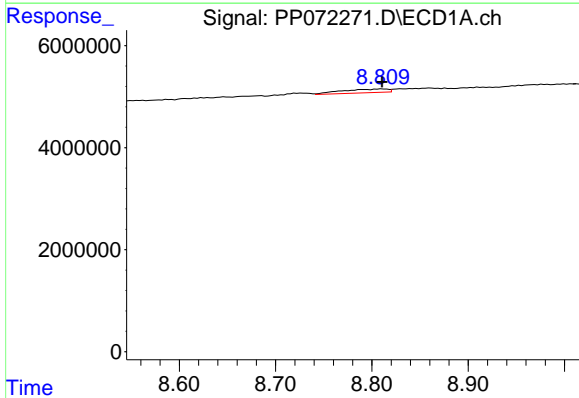
R.T.: 8.727 min
 Delta R.T.: 0.010 min
 Response: 715835
 Conc: 2.15 ng/ml

Instrument :
 ECD_P
 ClientSampleId :



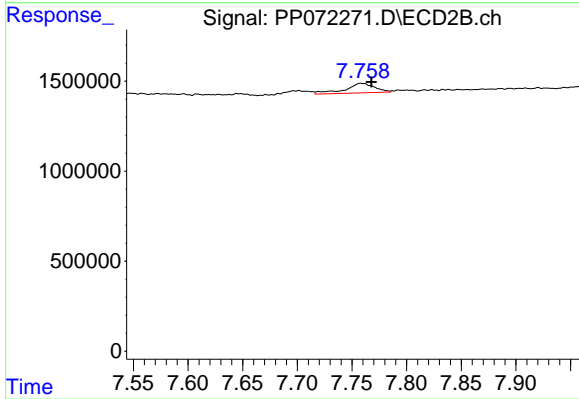
#41 AR-1268-1

R.T.: 7.701 min
 Delta R.T.: 0.000 min
 Response: 354334
 Conc: 1.51 ng/ml



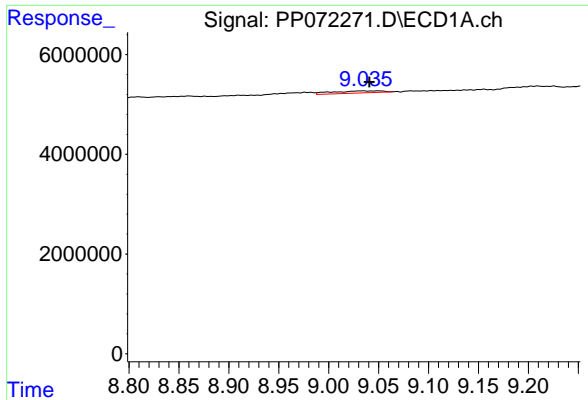
#42 AR-1268-2

R.T.: 8.810 min
 Delta R.T.: 0.000 min
 Response: 2425501
 Conc: 8.66 ng/ml



#42 AR-1268-2

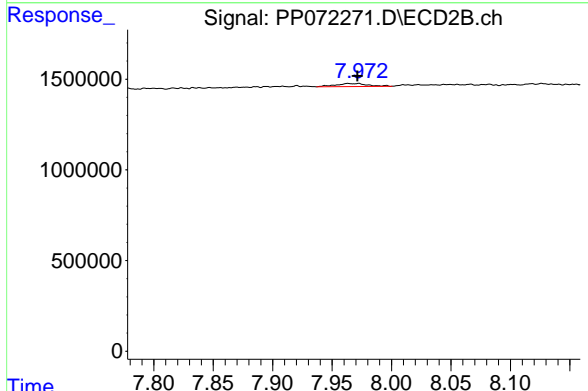
R.T.: 7.758 min
 Delta R.T.: -0.009 min
 Response: 984813
 Conc: 4.76 ng/ml



#43 AR-1268-3

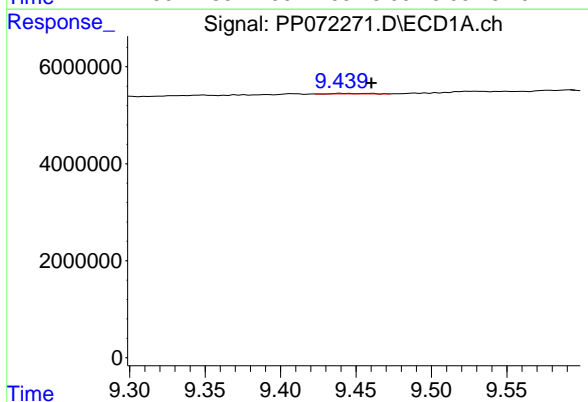
R.T.: 9.035 min
 Delta R.T.: -0.006 min
 Response: 1454899
 Conc: 6.03 ng/ml

Instrument :
 ECD_P
 ClientSampleId :



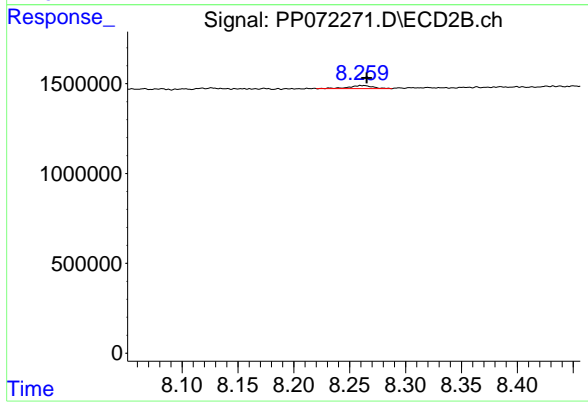
#43 AR-1268-3

R.T.: 7.972 min
 Delta R.T.: 0.000 min
 Response: 315630
 Conc: 1.86 ng/ml



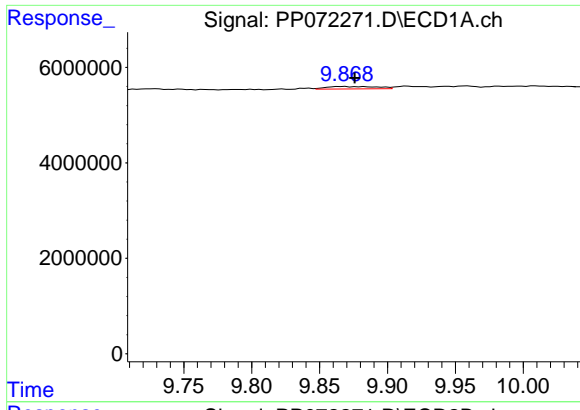
#44 AR-1268-4

R.T.: 9.440 min
 Delta R.T.: -0.021 min
 Response: 148409
 Conc: 1.41 ng/ml



#44 AR-1268-4

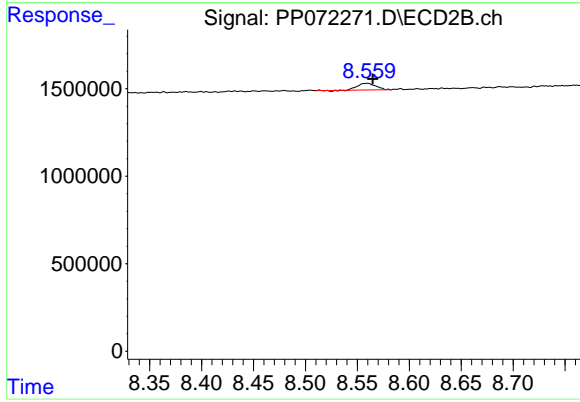
R.T.: 8.261 min
 Delta R.T.: -0.004 min
 Response: 242895
 Conc: 3.33 ng/ml



#45 AR-1268-5

R.T.: 9.869 min
 Delta R.T.: -0.007 min
 Response: 1319256
 Conc: 1.95 ng/ml

Instrument :
 ECD_P
 ClientSampleId :



#45 AR-1268-5

R.T.: 8.559 min
 Delta R.T.: -0.005 min
 Response: 456760
 Conc: 1.00 ng/ml