

Data Path : Z:\pestpcbsrv\HPCHEM1\ECD\_P\Data\PP052125\  
 Data File : PP072245.D  
 Signal(s) : Signal #1: ECD1A.ch Signal #2: ECD2B.ch  
 Acq On : 21 May 2025 11:09  
 Operator : YP\AJ  
 Sample : Q2067-01  
 Misc :  
 ALS Vial : 8 Sample Multiplier: 1

**Instrument :**  
 ECD\_P  
**ClientSampleId :**  
 303-PPR-FRAC

**Manual Integrations**  
**APPROVED**  
 Reviewed By :Yogesh Patel 05/21/2025  
 Supervised By :mohammad ahmed 05/30/2025

Integration File signal 1: autoint1.e  
 Integration File signal 2: autoint2.e  
 Quant Time: May 21 11:49:48 2025  
 Quant Method : Z:\pestpcbsrv\HPCHEM1\ECD\_P\methods\PP051925.M  
 Quant Title : GC EXTRACTABLES  
 QLast Update : Tue May 20 03:29:33 2025  
 Response via : Initial Calibration  
 Integrator: ChemStation

Volume Inj. : 2 µl  
 Signal #1 Phase : ZB-MR1 Signal #2 Phase: ZB-MR2  
 Signal #1 Info : 30Mx0.32mmx 0.50µ Signal #2 Info : 30M x 0.32mm x 0.25µm

Compound	RT#1	RT#2	Resp#1	Resp#2	ng/ml	ng/ml
-----						
System Monitoring Compounds						
1) SA Tetrachlo...	4.496	3.796	29559617	27571535	14.700m	17.250m
2) SA Decachlor...	10.218	8.818	14383864	16405665	8.829m	15.497 #

Target Compounds

(f)=RT Delta > 1/2 Window (#)=Amounts differ by > 25% (m)=manual int.

Data Path : Z:\pestpcbsrv\HPCHEM1\ECD\_P\Data\PP052125\  
Data File : PP072245.D  
Signal(s) : Signal #1: ECD1A.ch Signal #2: ECD2B.ch  
Acq On : 21 May 2025 11:09  
Operator : YP\AJ  
Sample : Q2067-01  
Misc :  
ALS Vial : 8 Sample Multiplier: 1

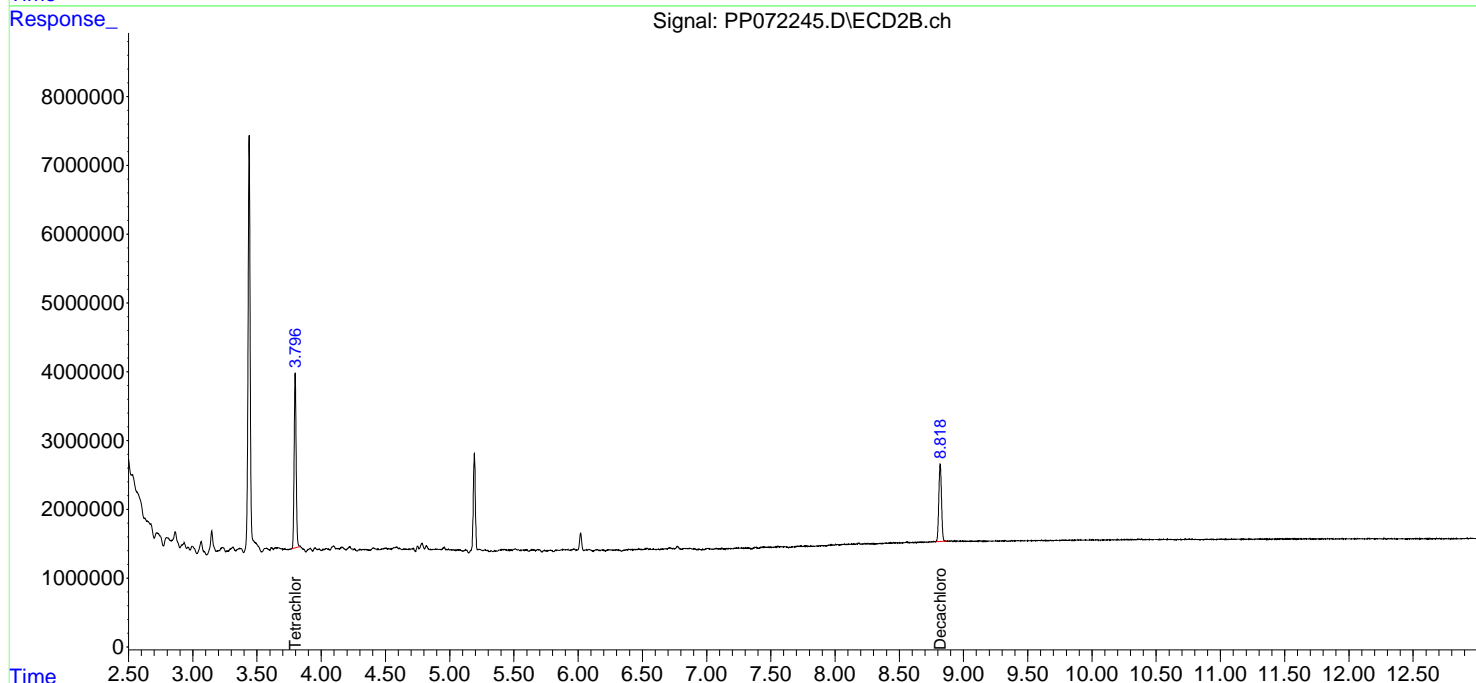
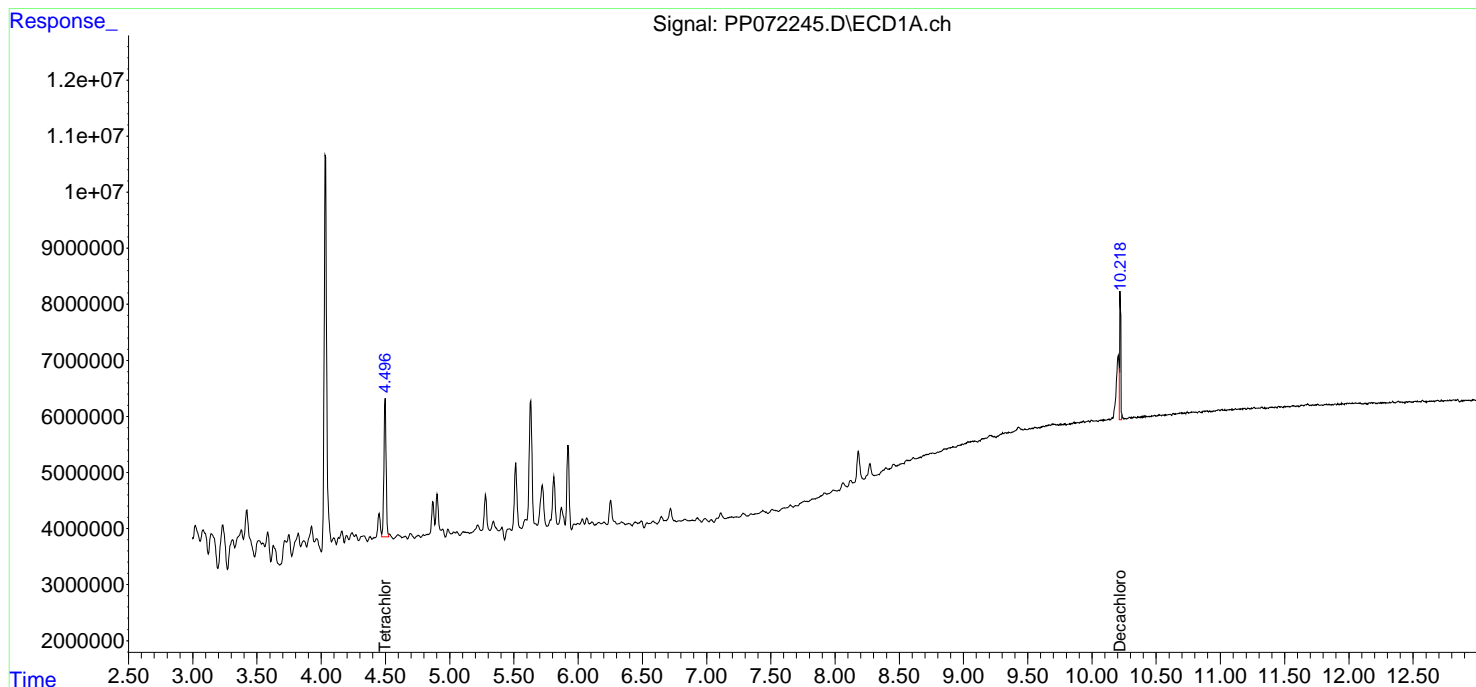
Instrument :  
ECD\_P  
ClientSampleId :  
303-PPR-FRAC

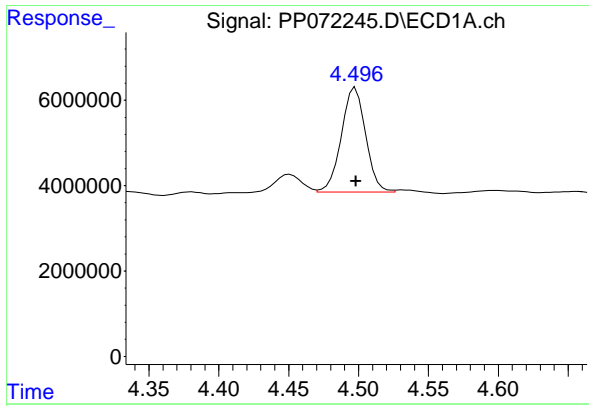
Manual Integrations  
APPROVED

Reviewed By :Yogesh Patel 05/21/2025  
Supervised By :mohammad ahmed 05/30/2025

Integration File signal 1: autoint1.e  
Integration File signal 2: autoint2.e  
Quant Time: May 21 11:49:48 2025  
Quant Method : Z:\pestpcbsrv\HPCHEM1\ECD\_P\methods\PP051925.M  
Quant Title : GC EXTRACTABLES  
QLast Update : Tue May 20 03:29:33 2025  
Response via : Initial Calibration  
Integrator: ChemStation

Volume Inj. : 2 µl  
Signal #1 Phase : ZB-MR1 Signal #2 Phase: ZB-MR2  
Signal #1 Info : 30Mx0.32mmx 0.50µm Signal #2 Info : 30M x 0.32mm x 0.25µm





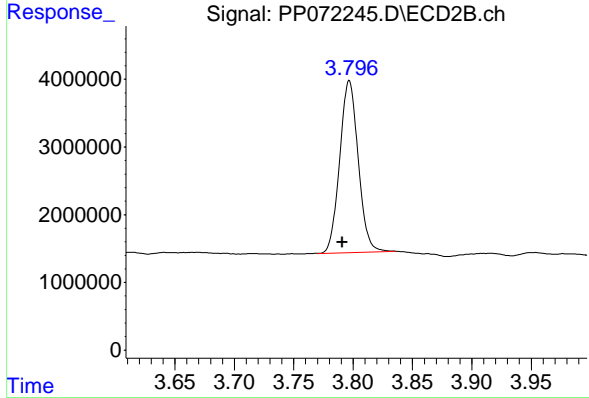
#1 Tetrachloro-m-xylene

R.T.: 4.496 min  
 Delta R.T.: -0.002 min  
 Response: 29559617  
 Conc: 14.70 ng/ml

Instrument : ECD\_P  
 Client Sample Id : 303-PPR-FRAC

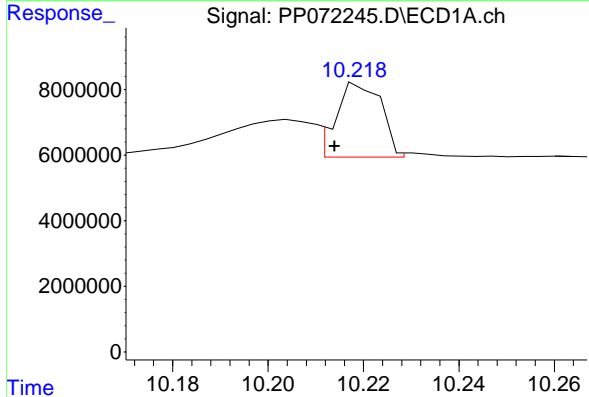
Manual Integrations  
 APPROVED

Reviewed By :Yogesh Patel 05/21/2025  
 Supervised By :mohammad ahmed 05/30/2025



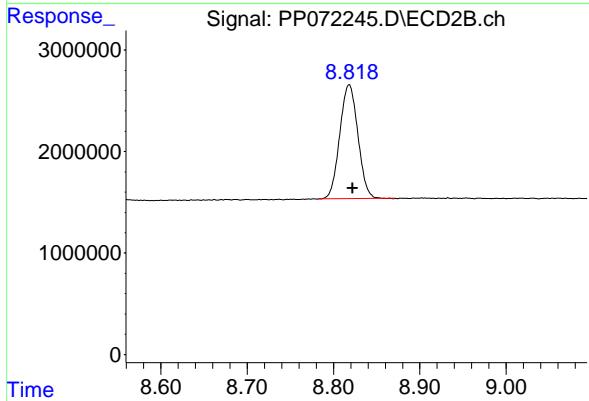
#1 Tetrachloro-m-xylene

R.T.: 3.796 min  
 Delta R.T.: 0.005 min  
 Response: 27571535  
 Conc: 17.25 ng/ml m



#2 Decachlorobiphenyl

R.T.: 10.218 min  
 Delta R.T.: 0.004 min  
 Response: 14383864  
 Conc: 8.83 ng/ml m



#2 Decachlorobiphenyl

R.T.: 8.818 min  
 Delta R.T.: -0.004 min  
 Response: 16405665  
 Conc: 15.50 ng/ml