

Data Path : Z:\pestpcbsrv\HPCHEM1\ECD_P\Data\PP052125\
 Data File : PP072255.D
 Signal(s) : Signal #1: ECD1A.ch Signal #2: ECD2B.ch
 Acq On : 21 May 2025 17:40
 Operator : YP\AJ
 Sample : AR1242CCC500
 Misc :
 ALS Vial : 4 Sample Multiplier: 1

Instrument :
 ECD_P
ClientSampleId :
 AR1242CCC500

Integration File signal 1: autoint1.e
 Integration File signal 2: autoint2.e
 Quant Time: May 22 01:48:18 2025
 Quant Method : Z:\pestpcbsrv\HPCHEM1\ECD_P\methods\PP051925.M
 Quant Title : GC EXTRACTABLES
 QLast Update : Tue May 20 03:29:33 2025
 Response via : Initial Calibration
 Integrator: ChemStation

Volume Inj. : 2 µl
 Signal #1 Phase : ZB-MR1 Signal #2 Phase: ZB-MR2
 Signal #1 Info : 30Mx0.32mmx 0.50µ Signal #2 Info : 30M x 0.32mm x 0.25µm

Compound	RT#1	RT#2	Resp#1	Resp#2	ng/ml	ng/ml

System Monitoring Compounds						
1) SA Tetrachlo...	4.501	3.796	109.9E6	89742942	54.664	56.147
2) SA Decachlor...	10.210	8.819	92634287	62001850	56.861	58.570
Target Compounds						
16) L4 AR-1242-1	5.654	4.879	32455644	28829709	518.483	553.264
17) L4 AR-1242-2	5.676	4.897	50218079	41528532	578.684	565.043
18) L4 AR-1242-3	5.739	5.074	30070402	23009624	546.080	588.097
19) L4 AR-1242-4	5.836	5.158	25007124	22071352	563.871	587.273
20) L4 AR-1242-5	6.566	5.681	26723153	28429485	524.139	589.119

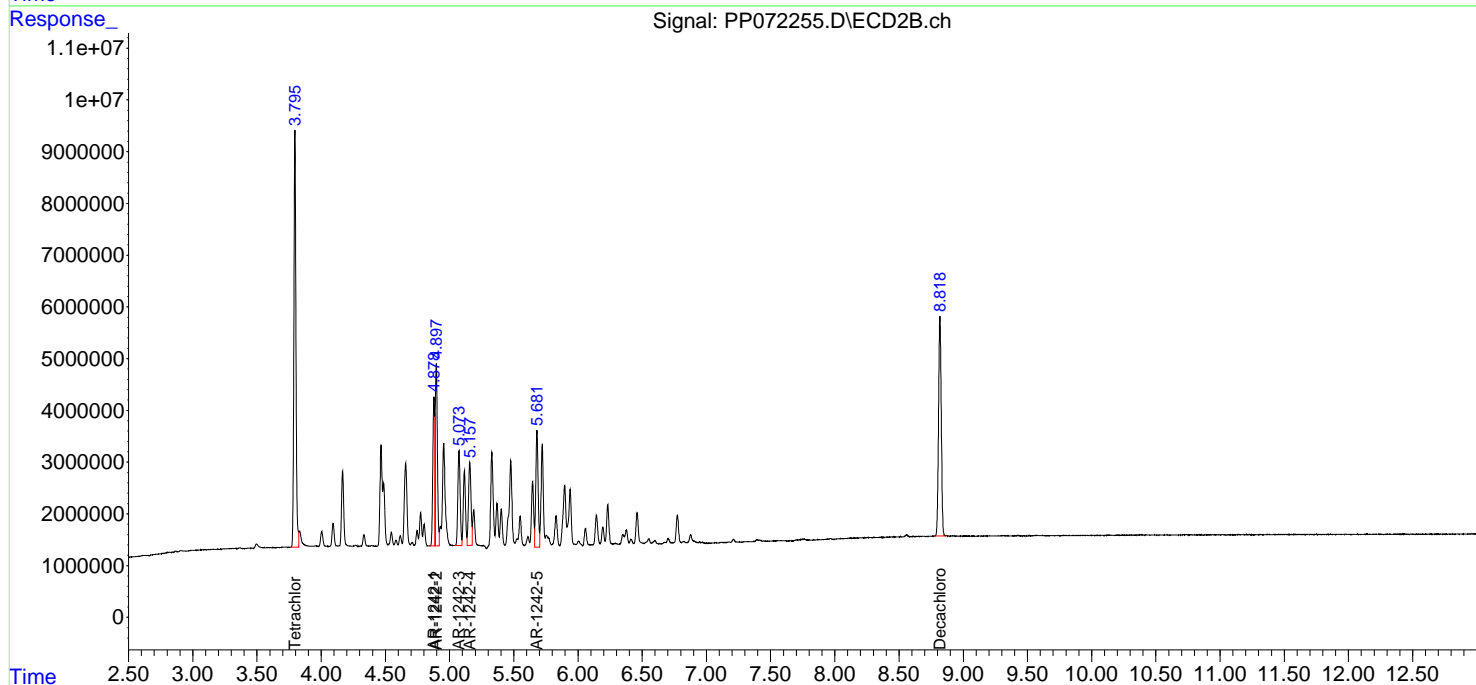
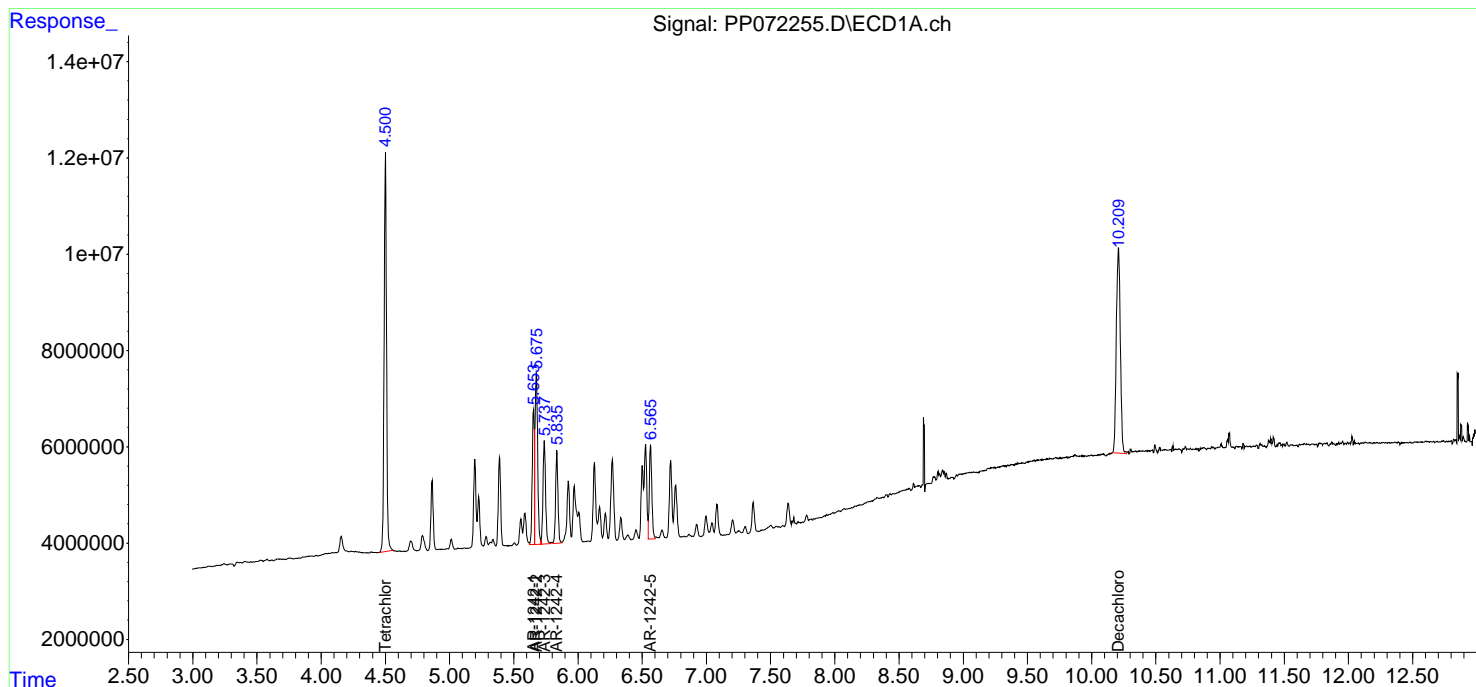
(f)=RT Delta > 1/2 Window (#)=Amounts differ by > 25% (m)=manual int.

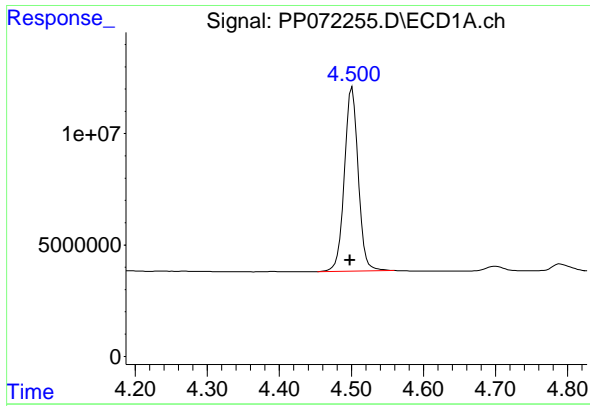
Data Path : Z:\pestpcbsrv\HPCHEM1\ECD_P\Data\PP052125\
 Data File : PP072255.D
 Signal(s) : Signal #1: ECD1A.ch Signal #2: ECD2B.ch
 Acq On : 21 May 2025 17:40
 Operator : YP\AJ
 Sample : AR1242CCC500
 Misc :
 ALS Vial : 4 Sample Multiplier: 1

Instrument :
 ECD_P
 ClientSampleId :
 AR1242CCC500

Integration File signal 1: autoint1.e
 Integration File signal 2: autoint2.e
 Quant Time: May 22 01:48:18 2025
 Quant Method : Z:\pestpcbsrv\HPCHEM1\ECD_P\methods\PP051925.M
 Quant Title : GC EXTRACTABLES
 QLast Update : Tue May 20 03:29:33 2025
 Response via : Initial Calibration
 Integrator: ChemStation

Volume Inj. : 2 µl
 Signal #1 Phase : ZB-MR1 Signal #2 Phase: ZB-MR2
 Signal #1 Info : 30Mx0.32mmx 0.50µm Signal #2 Info : 30M x 0.32mm x 0.25µm

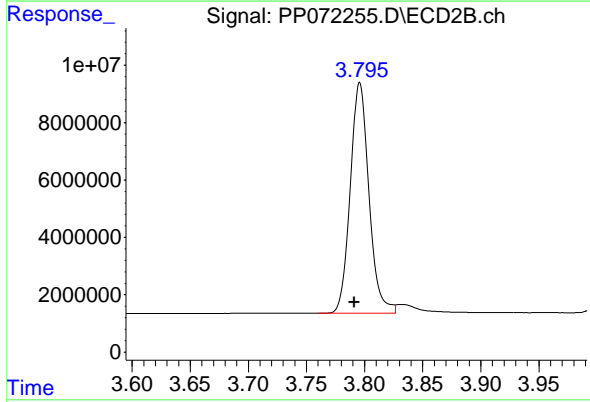




#1 Tetrachloro-m-xylene

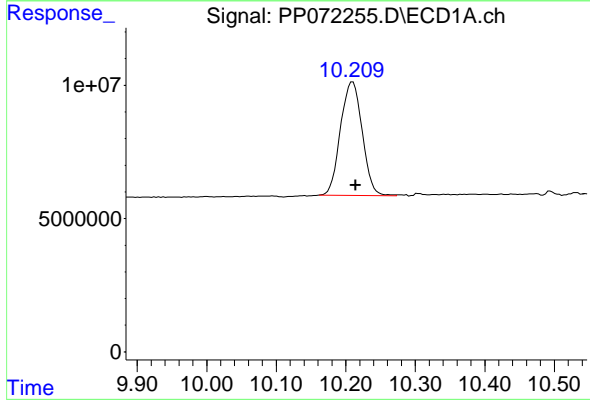
R.T.: 4.501 min
 Delta R.T.: 0.003 min
 Response: 109917764
 Conc: 54.66 ng/ml

Instrument :
 ECD_P
 ClientSampleId :
 AR1242CCC500



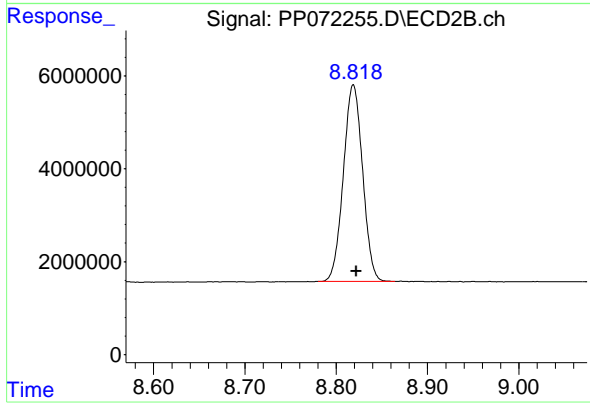
#1 Tetrachloro-m-xylene

R.T.: 3.796 min
 Delta R.T.: 0.005 min
 Response: 89742942
 Conc: 56.15 ng/ml



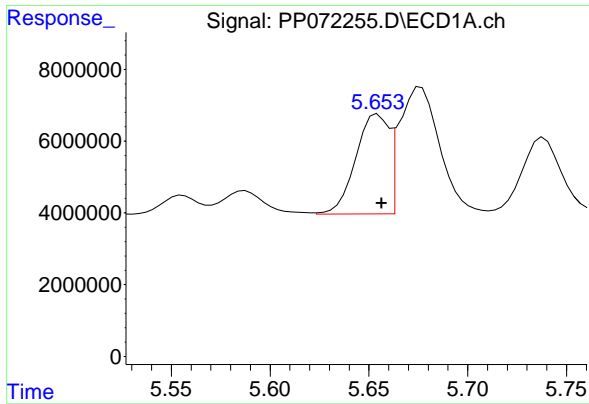
#2 Decachlorobiphenyl

R.T.: 10.210 min
 Delta R.T.: -0.004 min
 Response: 92634287
 Conc: 56.86 ng/ml



#2 Decachlorobiphenyl

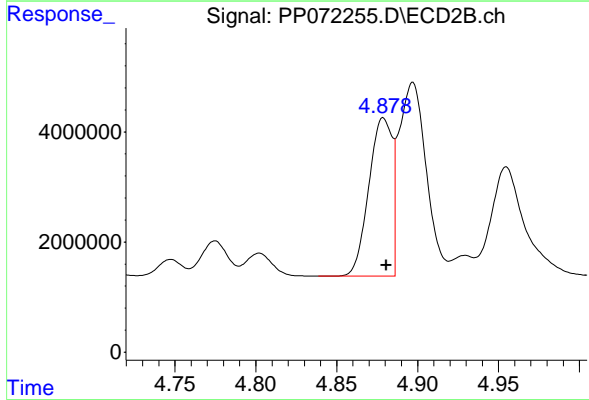
R.T.: 8.819 min
 Delta R.T.: -0.003 min
 Response: 62001850
 Conc: 58.57 ng/ml



#16 AR-1242-1

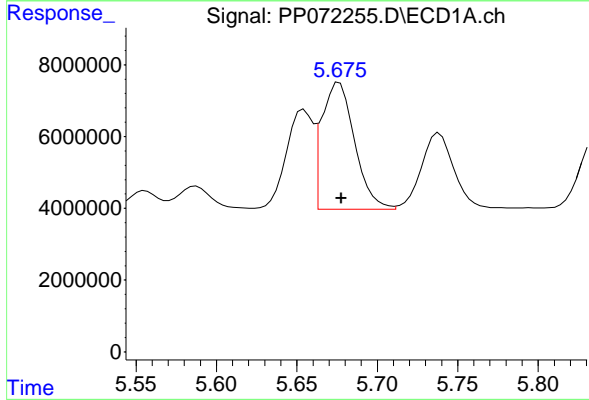
R.T.: 5.654 min
 Delta R.T.: -0.002 min
 Response: 32455644
 Conc: 518.48 ng/ml

Instrument :
 ECD_P
 ClientSampleId :
 AR1242CCC500



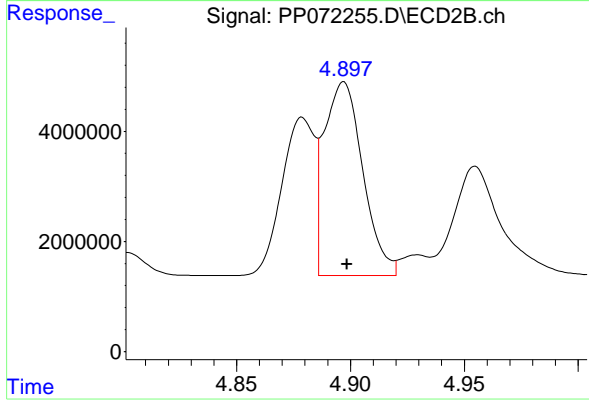
#16 AR-1242-1

R.T.: 4.879 min
 Delta R.T.: -0.002 min
 Response: 28829709
 Conc: 553.26 ng/ml



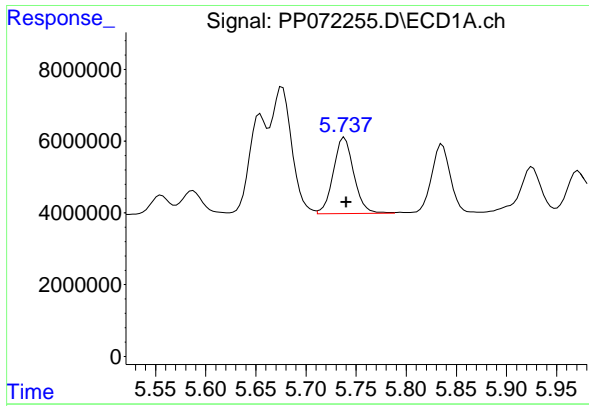
#17 AR-1242-2

R.T.: 5.676 min
 Delta R.T.: -0.001 min
 Response: 50218079
 Conc: 578.68 ng/ml



#17 AR-1242-2

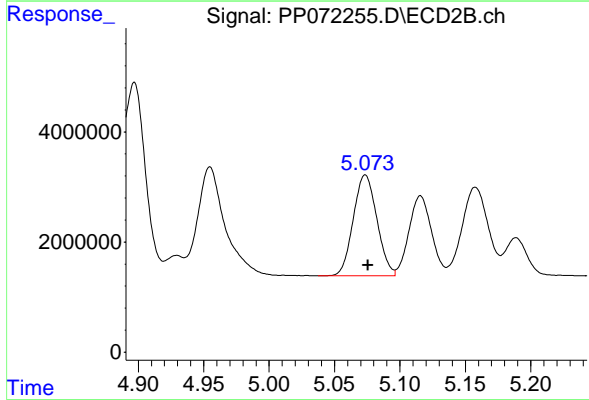
R.T.: 4.897 min
 Delta R.T.: -0.001 min
 Response: 41528532
 Conc: 565.04 ng/ml



#18 AR-1242-3

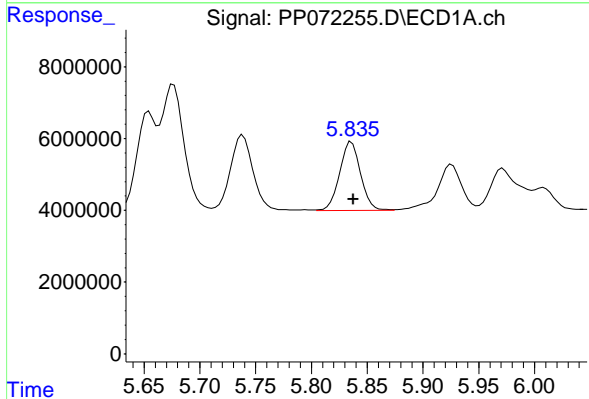
R.T.: 5.739 min
 Delta R.T.: -0.002 min
 Response: 30070402
 Conc: 546.08 ng/ml

Instrument :
 ECD_P
 ClientSampleId :
 AR1242CCC500



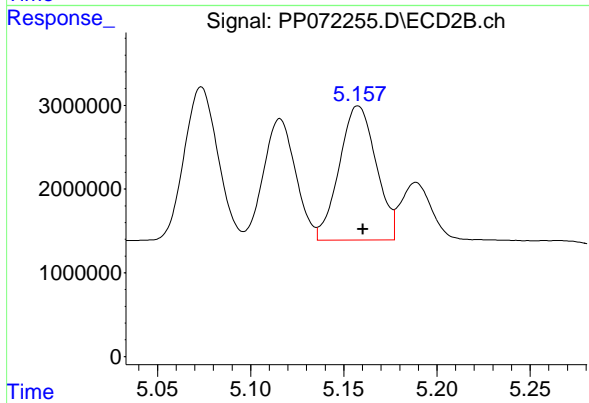
#18 AR-1242-3

R.T.: 5.074 min
 Delta R.T.: -0.002 min
 Response: 23009624
 Conc: 588.10 ng/ml



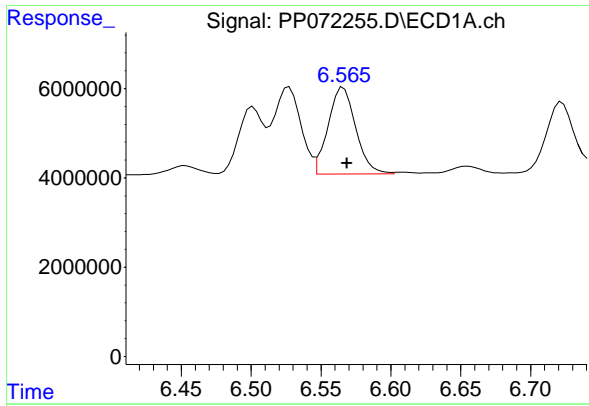
#19 AR-1242-4

R.T.: 5.836 min
 Delta R.T.: -0.001 min
 Response: 25007124
 Conc: 563.87 ng/ml



#19 AR-1242-4

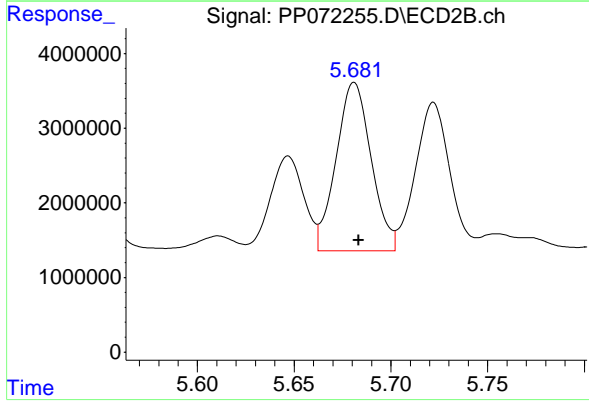
R.T.: 5.158 min
 Delta R.T.: -0.003 min
 Response: 22071352
 Conc: 587.27 ng/ml



#20 AR-1242-5

R.T.: 6.566 min
 Delta R.T.: -0.002 min
 Response: 26723153
 Conc: 524.14 ng/ml

Instrument :
 ECD_P
 ClientSampleId :
 AR1242CCC500



#20 AR-1242-5

R.T.: 5.681 min
 Delta R.T.: -0.002 min
 Response: 28429485
 Conc: 589.12 ng/ml