

Data Path : Z:\pestpcbsrv\HPCHEM1\ECD_P\Data\PP052125\
 Data File : PP072259.D
 Signal(s) : Signal #1: ECD1A.ch Signal #2: ECD2B.ch
 Acq On : 21 May 2025 18:45
 Operator : YP\AJ
 Sample : Q2079-06
 Misc :
 ALS Vial : 17 Sample Multiplier: 1

Instrument :
 ECD_P
ClientSampleId :
 WC-A2-02-C

Manual Integrations
APPROVED
 Reviewed By :Yogesh Patel 05/22/2025
 Supervised By :mohammad ahmed 05/30/2025

Integration File signal 1: autoint1.e
 Integration File signal 2: autoint2.e
 Quant Time: May 22 07:17:13 2025
 Quant Method : Z:\pestpcbsrv\HPCHEM1\ECD_P\methods\PP051925.M
 Quant Title : GC EXTRACTABLES
 QLast Update : Tue May 20 03:29:33 2025
 Response via : Initial Calibration
 Integrator: ChemStation

Volume Inj. : 2 µl
 Signal #1 Phase : ZB-MR1 Signal #2 Phase: ZB-MR2
 Signal #1 Info : 30Mx0.32mmx 0.50µ Signal #2 Info : 30M x 0.32mm x 0.25µm

Compound	RT#1	RT#2	Resp#1	Resp#2	ng/ml	ng/ml

System Monitoring Compounds						
1) SA Tetrachlo...	4.498	3.795	30529330	29835578	15.183m	18.666m
2) SA Decachlor...	10.210	8.819	22893280	18230804	14.053	17.222

Target Compounds

(f)=RT Delta > 1/2 Window (#)=Amounts differ by > 25% (m)=manual int.

Data Path : Z:\pestpcbsrv\HPCHEM1\ECD_P\Data\PP052125\
 Data File : PP072259.D
 Signal(s) : Signal #1: ECD1A.ch Signal #2: ECD2B.ch
 Acq On : 21 May 2025 18:45
 Operator : YP\AJ
 Sample : Q2079-06
 Misc :
 ALS Vial : 17 Sample Multiplier: 1

Instrument :

ECD_P

ClientSampleId :

WC-A2-02-C

Manual Integrations

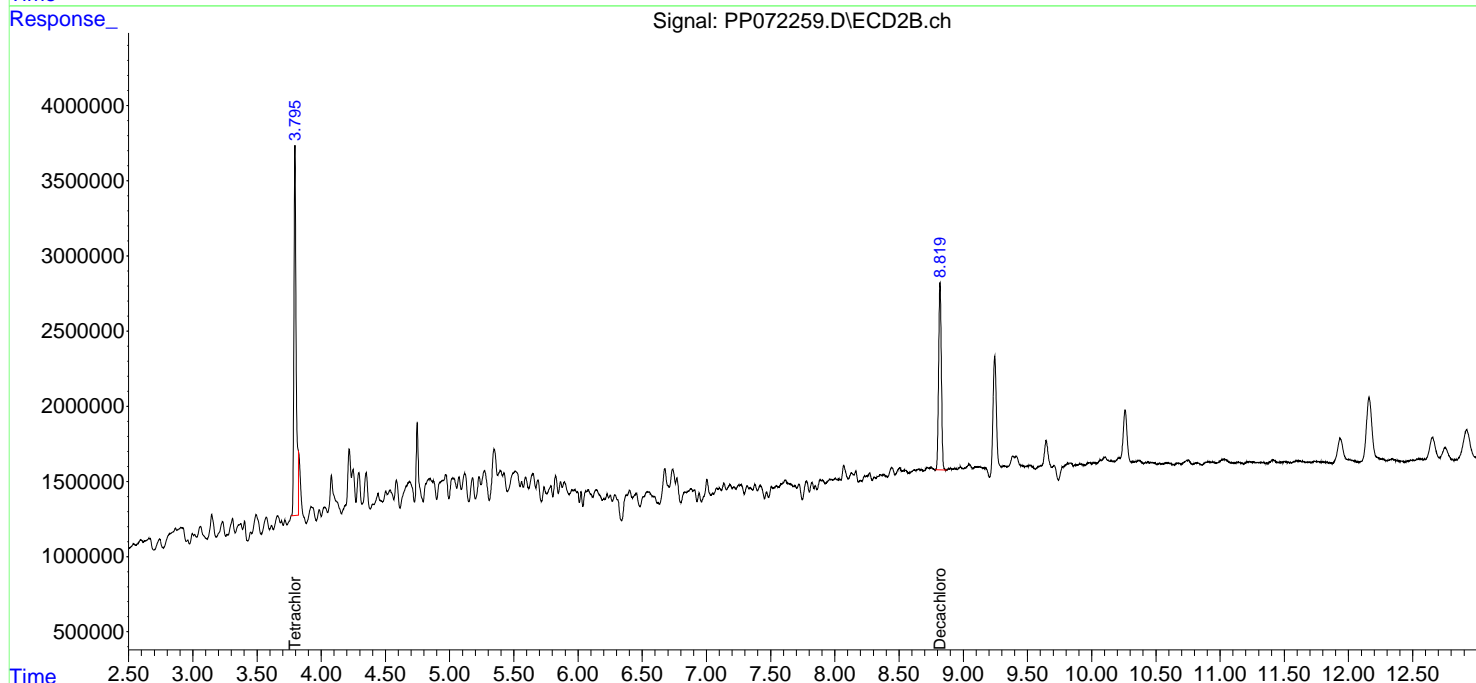
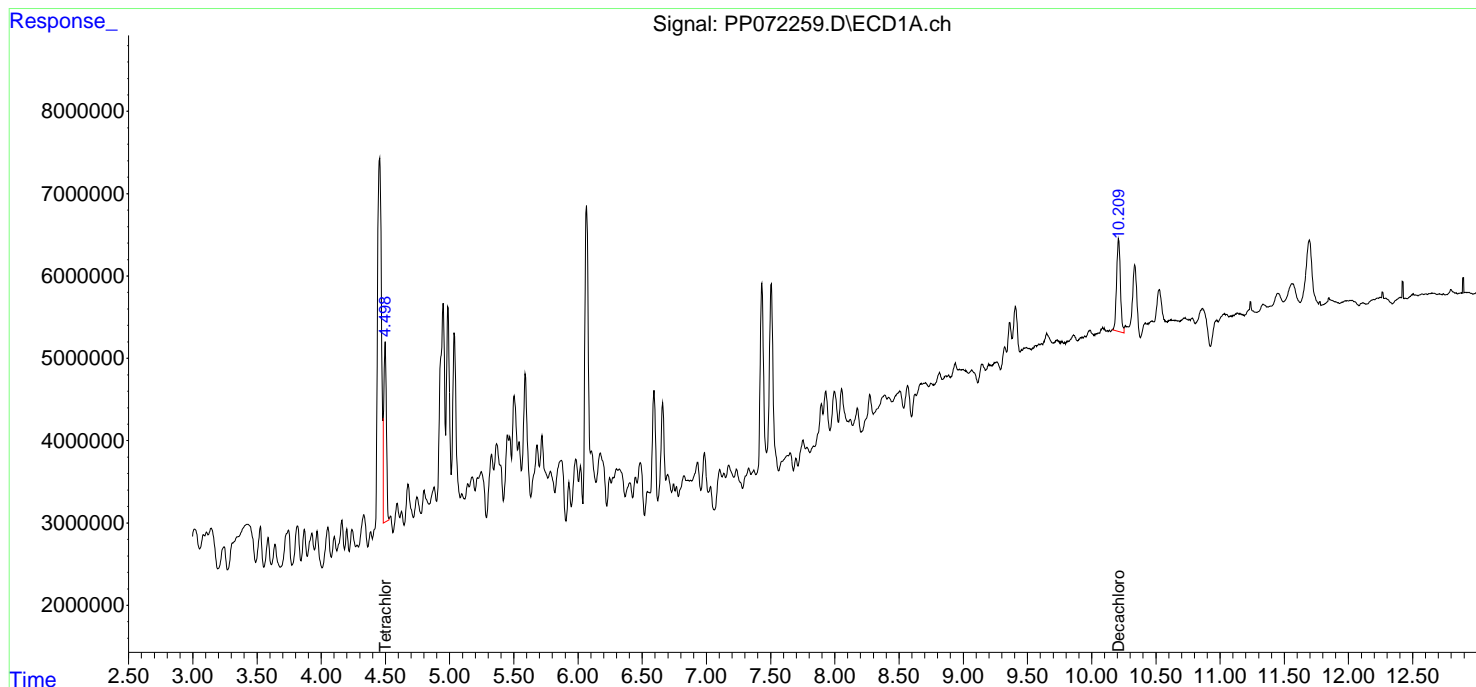
APPROVED

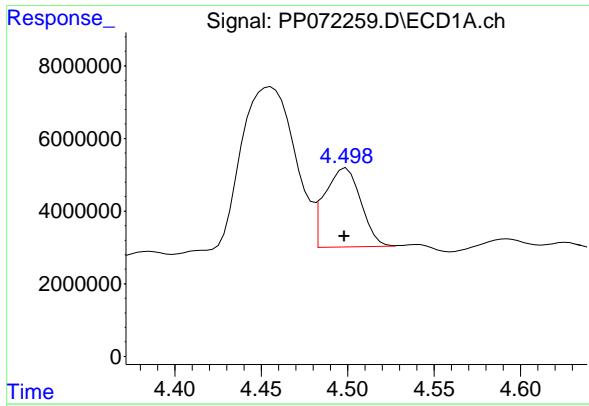
Reviewed By :Yogesh Patel 05/22/2025

Supervised By :mohammad ahmed 05/30/2025

Integration File signal 1: autoint1.e
 Integration File signal 2: autoint2.e
 Quant Time: May 22 07:17:13 2025
 Quant Method : Z:\pestpcbsrv\HPCHEM1\ECD_P\methods\PP051925.M
 Quant Title : GC EXTRACTABLES
 QLast Update : Tue May 20 03:29:33 2025
 Response via : Initial Calibration
 Integrator: ChemStation

Volume Inj. : 2 µl
 Signal #1 Phase : ZB-MR1 Signal #2 Phase: ZB-MR2
 Signal #1 Info : 30Mx0.32mmx 0.50µm Signal #2 Info : 30M x 0.32mm x 0.25µm





#1 Tetrachloro-m-xylene

R.T.: 4.498 min
 Delta R.T.: 0.000 min
 Response: 30529330
 Conc: 15.18 ng/ml

Instrument :

ECD_P

Client SampleId :

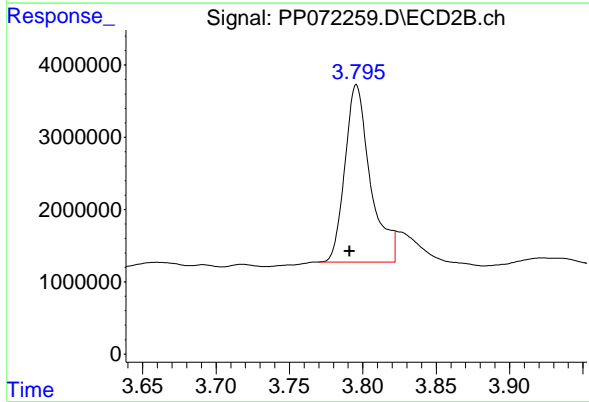
WC-A2-02-C

Manual Integrations

APPROVED

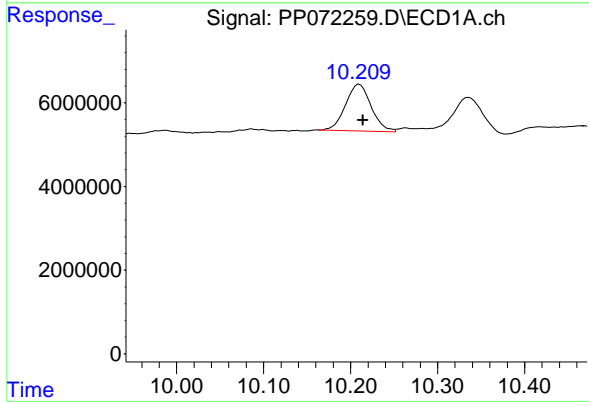
Reviewed By :Yogesh Patel 05/22/2025

Supervised By :mohammad ahmed 05/30/2025



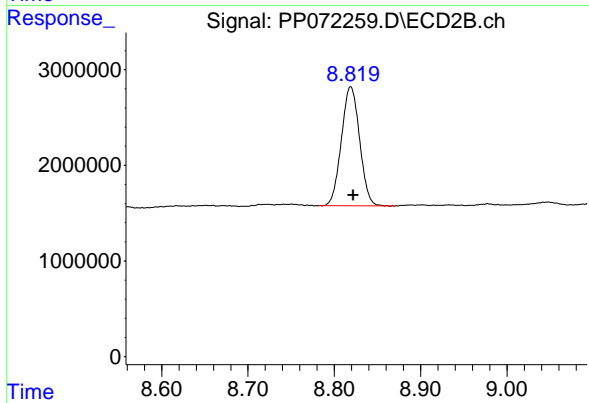
#1 Tetrachloro-m-xylene

R.T.: 3.795 min
 Delta R.T.: 0.004 min
 Response: 29835578
 Conc: 18.67 ng/ml



#2 Decachlorobiphenyl

R.T.: 10.210 min
 Delta R.T.: -0.004 min
 Response: 22893280
 Conc: 14.05 ng/ml



#2 Decachlorobiphenyl

R.T.: 8.819 min
 Delta R.T.: -0.003 min
 Response: 18230804
 Conc: 17.22 ng/ml