

Data Path : Z:\pestpcbsrv\HPCHEM1\ECD_P\Data\PP052125\
 Data File : PP072272.D
 Signal(s) : Signal #1: ECD1A.ch Signal #2: ECD2B.ch
 Acq On : 21 May 2025 23:38
 Operator : YP\AJ
 Sample : AR1254CCC500
 Misc :
 ALS Vial : 6 Sample Multiplier: 1

Instrument :
 ECD_P
ClientSampleId :
 AR1254CCC500

Manual Integrations
APPROVED
 Reviewed By :Yogesh Patel 05/28/2025
 Supervised By :mohammad ahmed 05/30/2025

Integration File signal 1: autoint1.e
 Integration File signal 2: autoint2.e
 Quant Time: May 22 01:53:02 2025
 Quant Method : Z:\pestpcbsrv\HPCHEM1\ECD_P\methods\PP051925.M
 Quant Title : GC EXTRACTABLES
 QLast Update : Tue May 20 03:29:33 2025
 Response via : Initial Calibration
 Integrator: ChemStation

Volume Inj. : 2 µl
 Signal #1 Phase : ZB-MR1 Signal #2 Phase: ZB-MR2
 Signal #1 Info : 30Mx0.32mmx 0.50µ Signal #2 Info : 30M x 0.32mm x 0.25µm

Compound	RT#1	RT#2	Resp#1	Resp#2	ng/ml	ng/ml

System Monitoring Compounds						
1) SA Tetrachlo...	4.499	3.795	109.8E6	94482243	54.610	59.112m
2) SA Decachlor...	10.205	8.819	90597674	62909615	55.611	59.427
Target Compounds						
26) L6 AR-1254-1	6.502	5.681	49633687	59003497	577.114	590.305m
27) L6 AR-1254-2	6.717	5.829	77708244	50670987	594.658	587.102m
28) L6 AR-1254-3	7.080	6.233	78835704	77068259	597.226	599.190
29) L6 AR-1254-4	7.363	6.461	70831258	48958860	542.724	573.985
30) L6 AR-1254-5	7.780	6.879	58480973	63314631	525.687	558.568

(f)=RT Delta > 1/2 Window (#)=Amounts differ by > 25% (m)=manual int.

Data Path : Z:\pestpcbsrv\HPCHEM1\ECD_P\Data\PP052125\
 Data File : PP072272.D
 Signal(s) : Signal #1: ECD1A.ch Signal #2: ECD2B.ch
 Acq On : 21 May 2025 23:38
 Operator : YP\AJ
 Sample : AR1254CCC500
 Misc :
 ALS Vial : 6 Sample Multiplier: 1

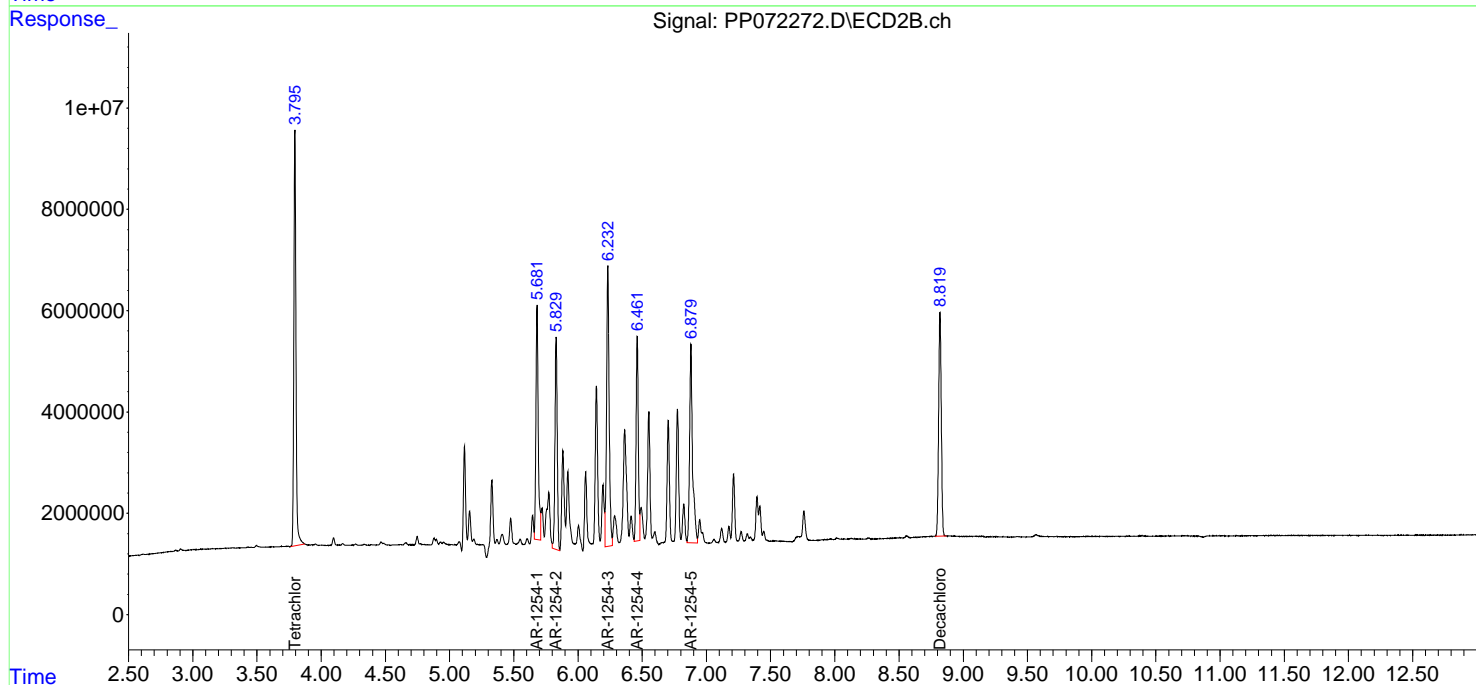
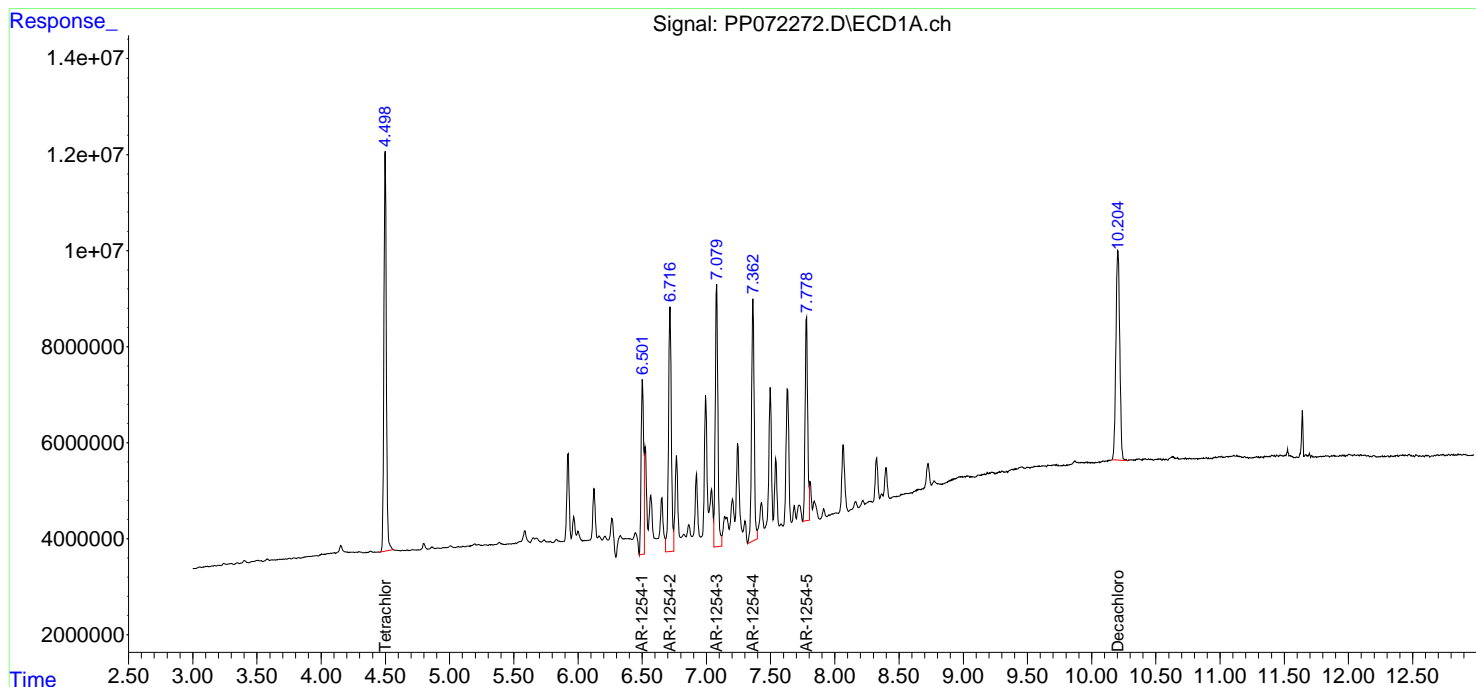
Instrument :
 ECD_P
ClientSampleId :
 AR1254CCC500

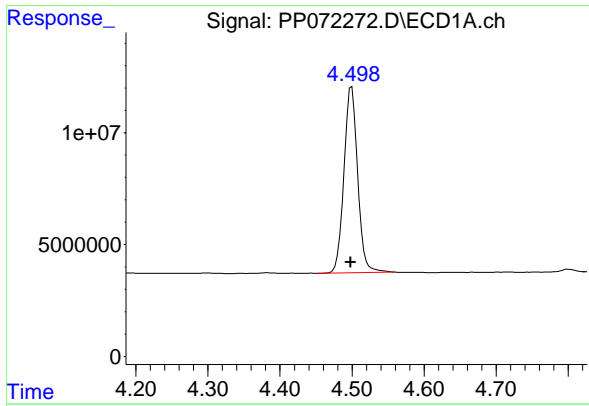
Manual Integrations
APPROVED

Reviewed By :Yogesh Patel 05/28/2025
 Supervised By :mohammad ahmed 05/30/2025

Integration File signal 1: autoint1.e
 Integration File signal 2: autoint2.e
 Quant Time: May 22 01:53:02 2025
 Quant Method : Z:\pestpcbsrv\HPCHEM1\ECD_P\methods\PP051925.M
 Quant Title : GC EXTRACTABLES
 QLast Update : Tue May 20 03:29:33 2025
 Response via : Initial Calibration
 Integrator: ChemStation

Volume Inj. : 2 µl
 Signal #1 Phase : ZB-MR1 Signal #2 Phase: ZB-MR2
 Signal #1 Info : 30Mx0.32mmx 0.50µm Signal #2 Info : 30M x 0.32mm x 0.25µm





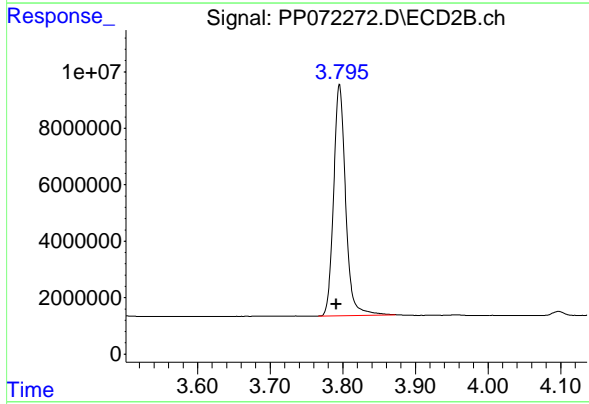
#1 Tetrachloro-m-xylene

R.T.: 4.499 min
 Delta R.T.: 0.001 min
 Response: 109810479
 Conc: 54.61 ng/ml

Instrument : ECD_P
 Client Sample Id : AR1254CCC500

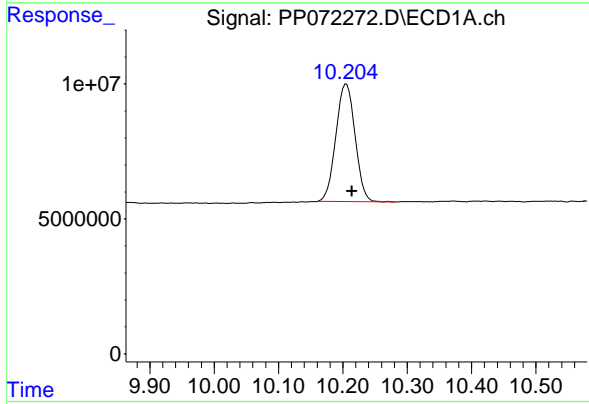
Manual Integrations
 APPROVED

Reviewed By :Yogesh Patel 05/28/2025
 Supervised By :mohammad ahmed 05/30/2025



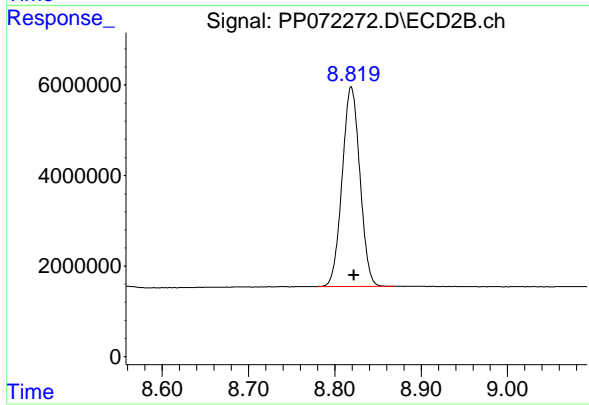
#1 Tetrachloro-m-xylene

R.T.: 3.795 min
 Delta R.T.: 0.004 min
 Response: 94482243
 Conc: 59.11 ng/ml m



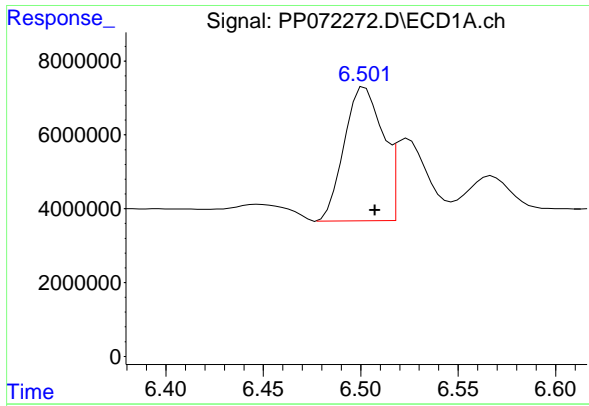
#2 Decachlorobiphenyl

R.T.: 10.205 min
 Delta R.T.: -0.009 min
 Response: 90597674
 Conc: 55.61 ng/ml



#2 Decachlorobiphenyl

R.T.: 8.819 min
 Delta R.T.: -0.003 min
 Response: 62909615
 Conc: 59.43 ng/ml



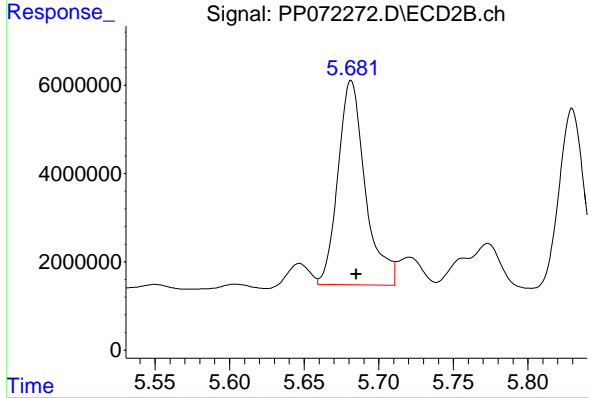
#26 AR-1254-1

R.T.: 6.502 min
 Delta R.T.: -0.005 min
 Response: 49633687
 Conc: 577.11 ng/ml

Instrument : ECD_P
 ClientSampleId : AR1254CCC500

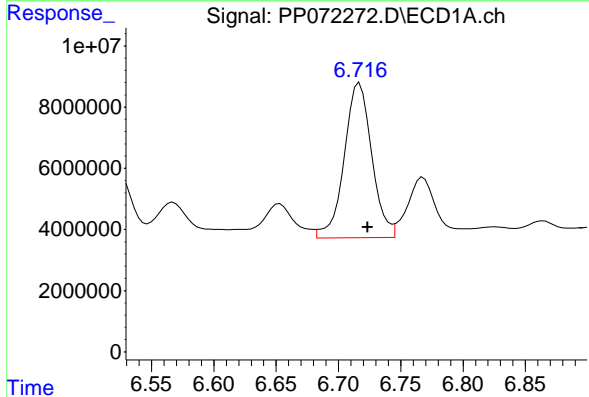
Manual Integrations
 APPROVED

Reviewed By :Yogesh Patel 05/28/2025
 Supervised By :mohammad ahmed 05/30/2025



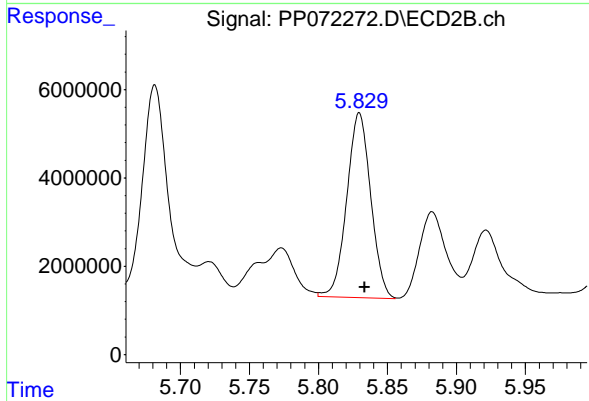
#26 AR-1254-1

R.T.: 5.681 min
 Delta R.T.: -0.004 min
 Response: 59003497
 Conc: 590.30 ng/ml m



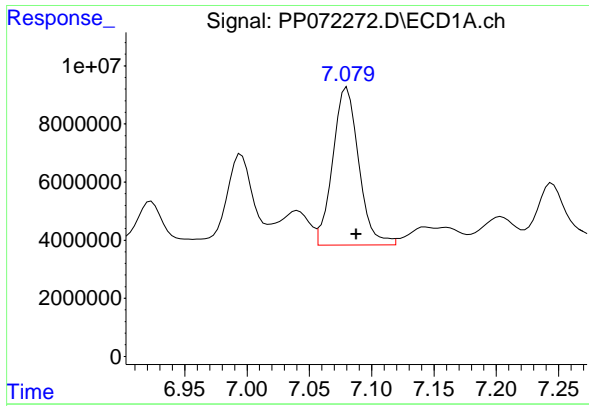
#27 AR-1254-2

R.T.: 6.717 min
 Delta R.T.: -0.007 min
 Response: 77708244
 Conc: 594.66 ng/ml



#27 AR-1254-2

R.T.: 5.829 min
 Delta R.T.: -0.004 min
 Response: 50670987
 Conc: 587.10 ng/ml m



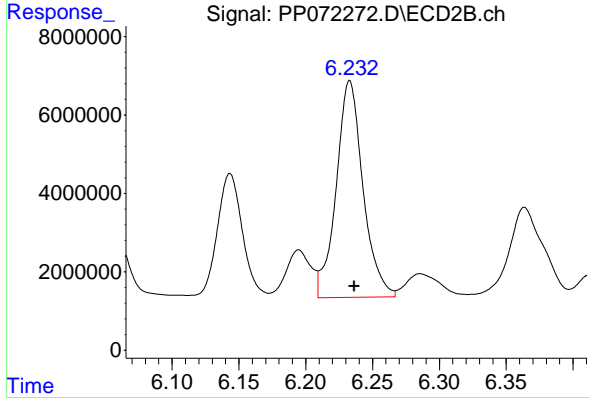
#28 AR-1254-3

R.T.: 7.080 min
 Delta R.T.: -0.008 min
 Response: 78835704
 Conc: 597.23 ng/ml

Instrument :
 ECD_P
 Client Sample Id :
 AR1254CCC500

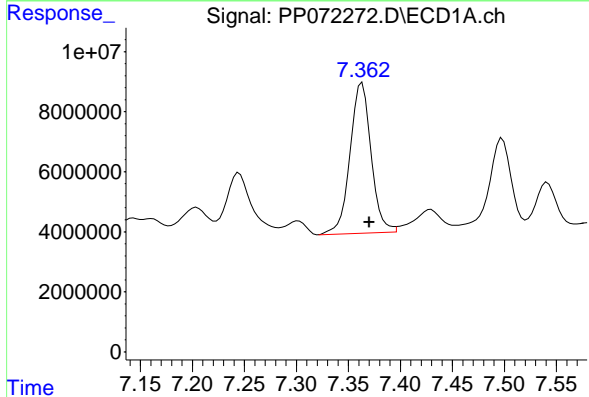
Manual Integrations
 APPROVED

Reviewed By :Yogesh Patel 05/28/2025
 Supervised By :mohammad ahmed 05/30/2025



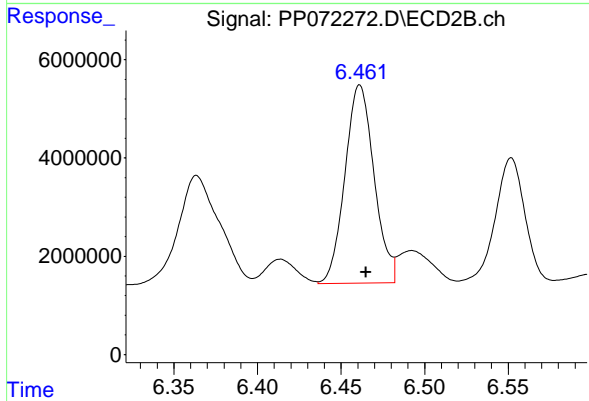
#28 AR-1254-3

R.T.: 6.233 min
 Delta R.T.: -0.003 min
 Response: 77068259
 Conc: 599.19 ng/ml



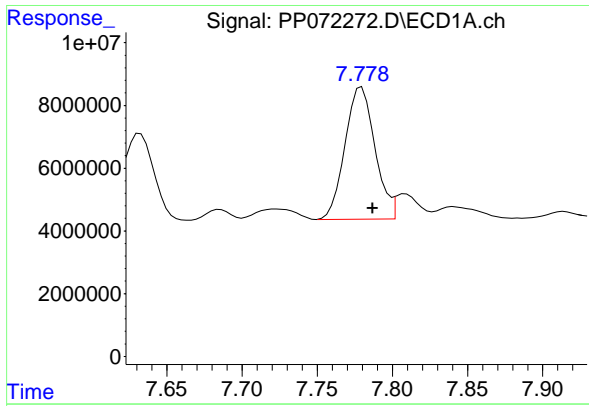
#29 AR-1254-4

R.T.: 7.363 min
 Delta R.T.: -0.007 min
 Response: 70831258
 Conc: 542.72 ng/ml



#29 AR-1254-4

R.T.: 6.461 min
 Delta R.T.: -0.004 min
 Response: 48958860
 Conc: 573.99 ng/ml



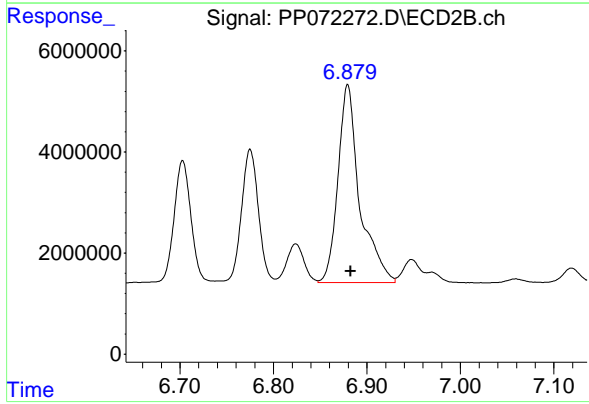
#30 AR-1254-5

R.T.: 7.780 min
 Delta R.T.: -0.007 min
 Response: 58480973
 Conc: 525.69 ng/ml

Instrument : ECD_P
 ClientSampleId : AR1254CCC500

Manual Integrations
 APPROVED

Reviewed By :Yogesh Patel 05/28/2025
 Supervised By :mohammad ahmed 05/30/2025



#30 AR-1254-5

R.T.: 6.879 min
 Delta R.T.: -0.003 min
 Response: 63314631
 Conc: 558.57 ng/ml