

Data Path : Z:\pestpcbsrv\HPCHEM1\ECD_P\Data\PP052125\
 Data File : PP072278.D
 Signal(s) : Signal #1: ECD1A.ch Signal #2: ECD2B.ch
 Acq On : 22 May 2025 01:16
 Operator : YP\AJ
 Sample : Q2103-03 10X
 Misc :
 ALS Vial : 31 Sample Multiplier: 1

Instrument :
 ECD_P
ClientSampleId :
 BC248114-FRONT

Manual Integrations
APPROVED
 Reviewed By :Yogesh Patel 05/22/2025
 Supervised By :mohammad ahmed 05/30/2025

Integration File signal 1: autoint1.e
 Integration File signal 2: autoint2.e
 Quant Time: May 22 07:22:00 2025
 Quant Method : Z:\pestpcbsrv\HPCHEM1\ECD_P\methods\PP051925.M
 Quant Title : GC EXTRACTABLES
 QLast Update : Tue May 20 03:29:33 2025
 Response via : Initial Calibration
 Integrator: ChemStation

Volume Inj. : 2 µl
 Signal #1 Phase : ZB-MR1 Signal #2 Phase: ZB-MR2
 Signal #1 Info : 30Mx0.32mmx 0.50µ Signal #2 Info : 30M x 0.32mm x 0.25µm

Compound	RT#1	RT#2	Resp#1	Resp#2	ng/ml	ng/ml

System Monitoring Compounds						
1) SA Tetrachlo...	4.502	3.796	3226973	2686895	1.605	1.681
2) SA Decachlor...	10.206	8.819	3878662	1382546	2.381	1.306m#

Target Compounds

(f)=RT Delta > 1/2 Window (#)=Amounts differ by > 25% (m)=manual int.

Data Path : Z:\pestpcbsrv\HPCHEM1\ECD_P\Data\PP052125\
 Data File : PP072278.D
 Signal(s) : Signal #1: ECD1A.ch Signal #2: ECD2B.ch
 Acq On : 22 May 2025 01:16
 Operator : YP\AJ
 Sample : Q2103-03 10X
 Misc :
 ALS Vial : 31 Sample Multiplier: 1

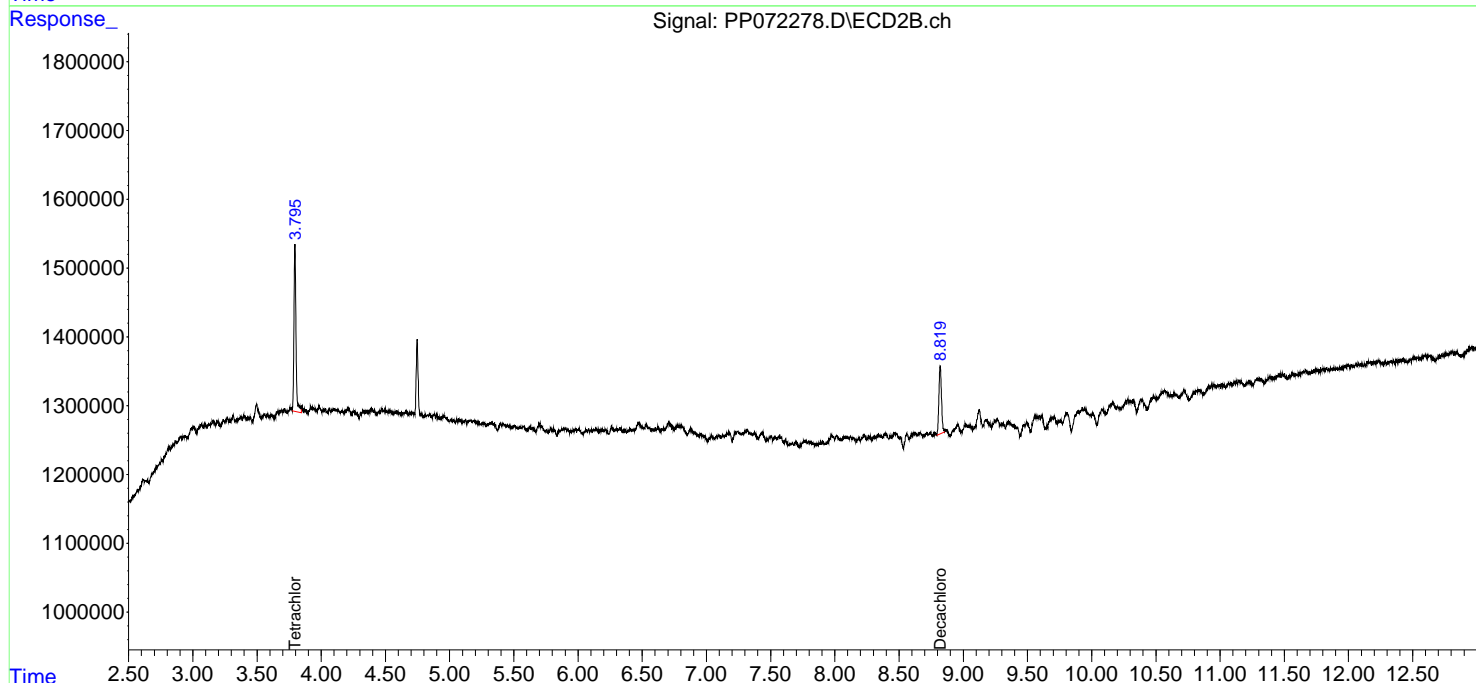
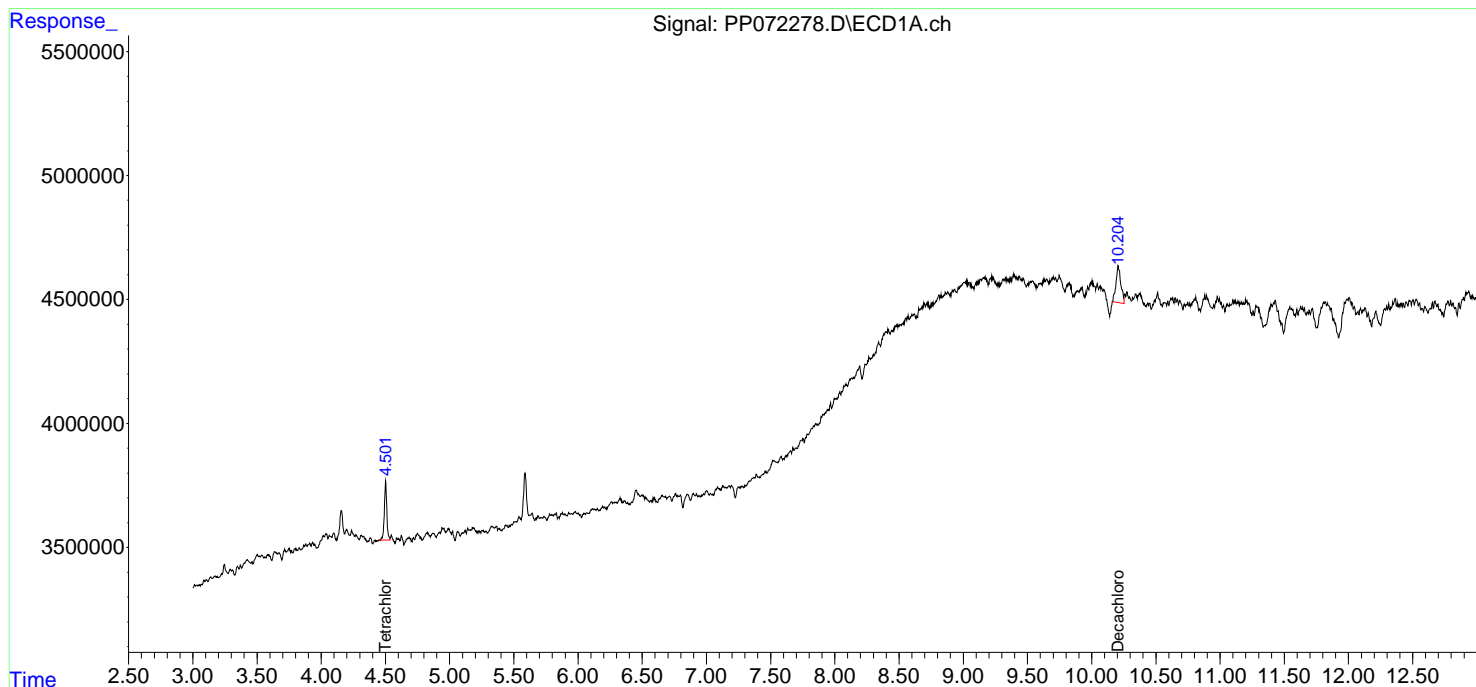
Instrument :
 ECD_P
ClientSampleId :
 BC248114-FRONT

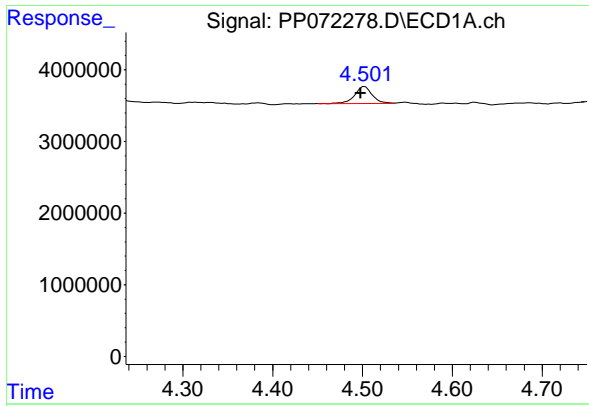
Manual Integrations
APPROVED

Reviewed By :Yogesh Patel 05/22/2025
 Supervised By :mohammad ahmed 05/30/2025

Integration File signal 1: autoint1.e
 Integration File signal 2: autoint2.e
 Quant Time: May 22 07:22:00 2025
 Quant Method : Z:\pestpcbsrv\HPCHEM1\ECD_P\methods\PP051925.M
 Quant Title : GC EXTRACTABLES
 QLast Update : Tue May 20 03:29:33 2025
 Response via : Initial Calibration
 Integrator: ChemStation

Volume Inj. : 2 µl
 Signal #1 Phase : ZB-MR1 Signal #2 Phase: ZB-MR2
 Signal #1 Info : 30Mx0.32mmx 0.50µm Signal #2 Info : 30M x 0.32mm x 0.25µm





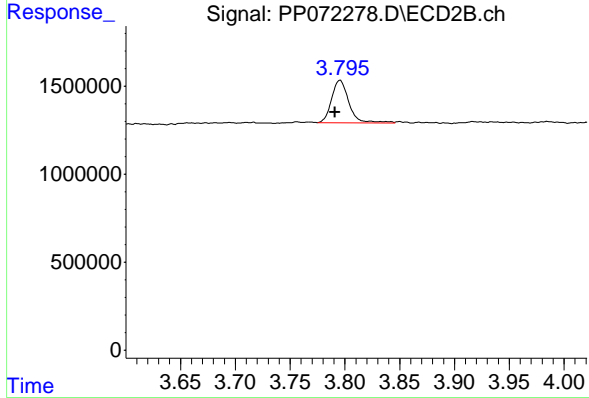
#1 Tetrachloro-m-xylene

R.T.: 4.502 min
 Delta R.T.: 0.004 min
 Response: 3226973
 Conc: 1.60 ng/ml

Instrument : ECD_P
 Client Sample Id : BC248114-FRONT

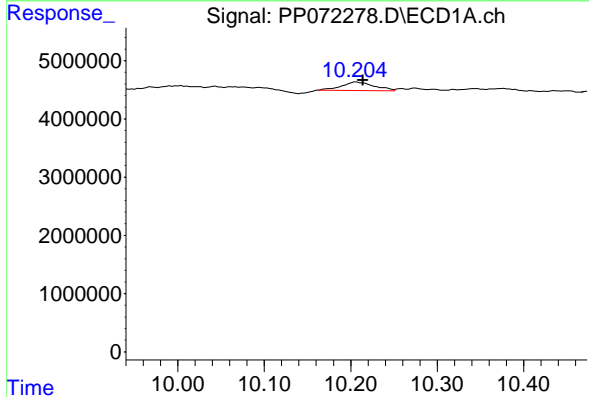
Manual Integrations
 APPROVED

Reviewed By :Yogesh Patel 05/22/2025
 Supervised By :mohammad ahmed 05/30/2025



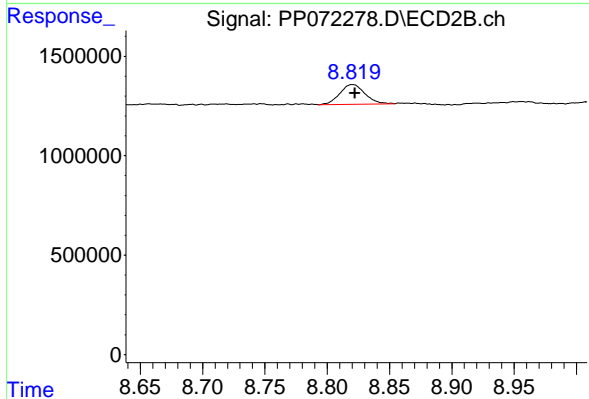
#1 Tetrachloro-m-xylene

R.T.: 3.796 min
 Delta R.T.: 0.004 min
 Response: 2686895
 Conc: 1.68 ng/ml



#2 Decachlorobiphenyl

R.T.: 10.206 min
 Delta R.T.: -0.008 min
 Response: 3878662
 Conc: 2.38 ng/ml



#2 Decachlorobiphenyl

R.T.: 8.819 min
 Delta R.T.: -0.003 min
 Response: 1382546
 Conc: 1.31 ng/ml m