

Data Path : Z:\pestpcbsrv\HPCHEM1\ECD_P\Data\PP052125\
 Data File : PP072280.D
 Signal(s) : Signal #1: ECD1A.ch Signal #2: ECD2B.ch
 Acq On : 22 May 2025 02:37
 Operator : YP\AJ
 Sample : AR1660CCC500
 Misc :
 ALS Vial : 3 Sample Multiplier: 1

Instrument :
 ECD_P
 ClientSampleId :
 AR1660CCC500

Integration File signal 1: autoint1.e
 Integration File signal 2: autoint2.e
 Quant Time: May 22 06:18:15 2025
 Quant Method : Z:\pestpcbsrv\HPCHEM1\ECD_P\methods\PP051925.M
 Quant Title : GC EXTRACTABLES
 QLast Update : Tue May 20 03:29:33 2025
 Response via : Initial Calibration
 Integrator: ChemStation

Volume Inj. : 2 µl
 Signal #1 Phase : ZB-MR1 Signal #2 Phase: ZB-MR2
 Signal #1 Info : 30Mx0.32mmx 0.50µ Signal #2 Info : 30M x 0.32mm x 0.25µm

Compound	RT#1	RT#2	Resp#1	Resp#2	ng/ml	ng/ml

System Monitoring Compounds						
1) SA Tetrachlo...	4.502	3.796	104.4E6	83112940	51.944	51.999
2) SA Decachlor...	10.209	8.819	81369469	52990511	49.947	50.057
Target Compounds						
3) L1 AR-1016-1	5.656	4.880	34379515	31418568	457.883	511.457
4) L1 AR-1016-2	5.676	4.897	53261470	46195225	497.809	526.205
5) L1 AR-1016-3	5.739	5.074	31880287	24767248	486.240	519.725
6) L1 AR-1016-4	5.836	5.116	26567452	18862485	498.732	495.790
7) L1 AR-1016-5	6.129	5.331	25017385	29510837	511.507	592.297
31) L7 AR-1260-1	7.247	6.364	48574838	42501313	518.991	532.907
32) L7 AR-1260-2	7.500	6.552	68861402	50150347	479.905	494.471
33) L7 AR-1260-3	7.859	6.704	54487220	45216743	478.500	520.317
34) L7 AR-1260-4	8.084	7.175	52595855	37464117	490.164	519.679
35) L7 AR-1260-5	8.402	7.417	116.0E6	88068174	490.289	507.235

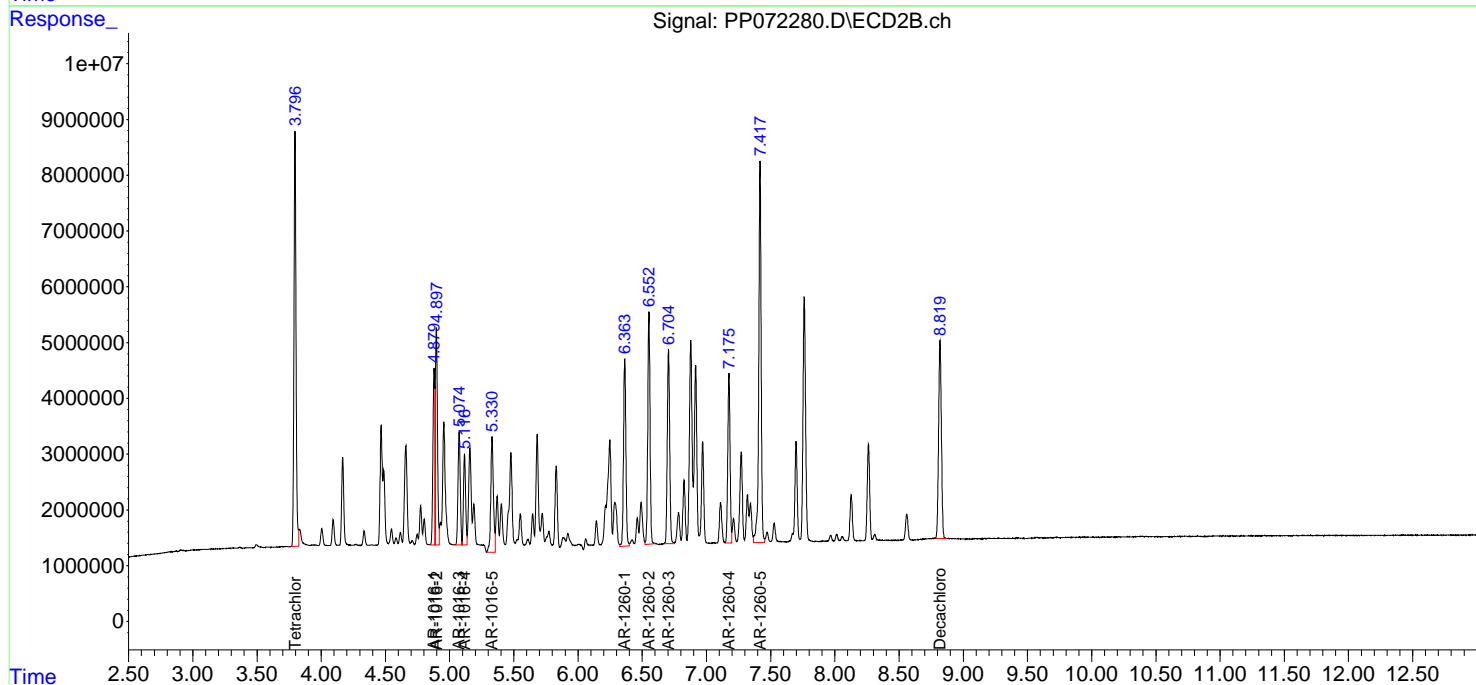
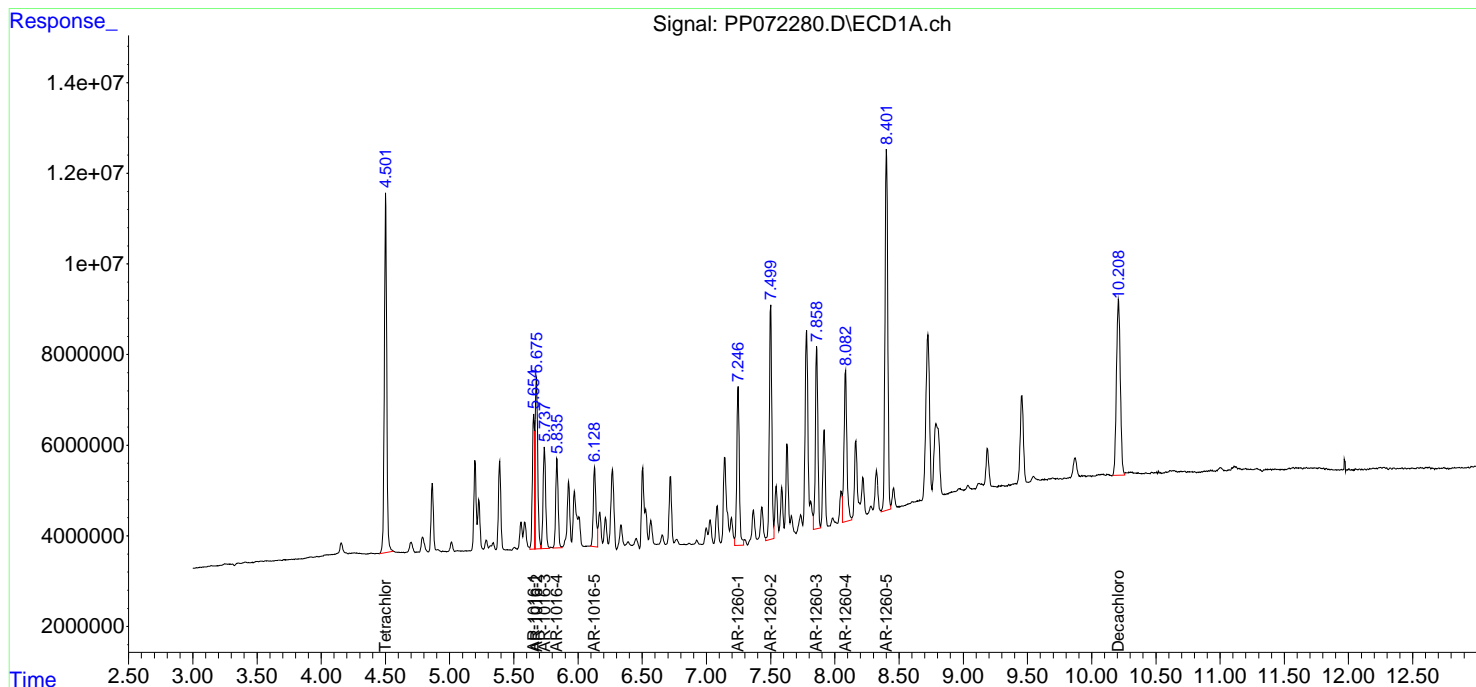
(f)=RT Delta > 1/2 Window (#)=Amounts differ by > 25% (m)=manual int.

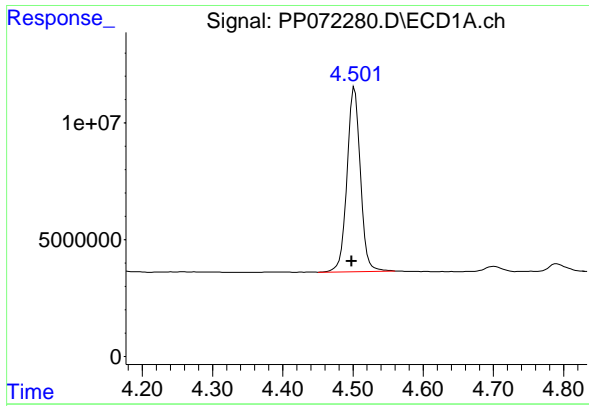
Data Path : Z:\pestpcbsrv\HPCHEM1\ECD_P\Data\PP052125\
 Data File : PP072280.D
 Signal(s) : Signal #1: ECD1A.ch Signal #2: ECD2B.ch
 Acq On : 22 May 2025 02:37
 Operator : YP\AJ
 Sample : AR1660CCC500
 Misc :
 ALS Vial : 3 Sample Multiplier: 1

Instrument :
 ECD_P
 ClientSampleId :
 AR1660CCC500

Integration File signal 1: autoint1.e
 Integration File signal 2: autoint2.e
 Quant Time: May 22 06:18:15 2025
 Quant Method : Z:\pestpcbsrv\HPCHEM1\ECD_P\methods\PP051925.M
 Quant Title : GC EXTRACTABLES
 QLast Update : Tue May 20 03:29:33 2025
 Response via : Initial Calibration
 Integrator: ChemStation

Volume Inj. : 2 µl
 Signal #1 Phase : ZB-MR1 Signal #2 Phase: ZB-MR2
 Signal #1 Info : 30Mx0.32mmx 0.50µ Signal #2 Info : 30M x 0.32mm x 0.25µm

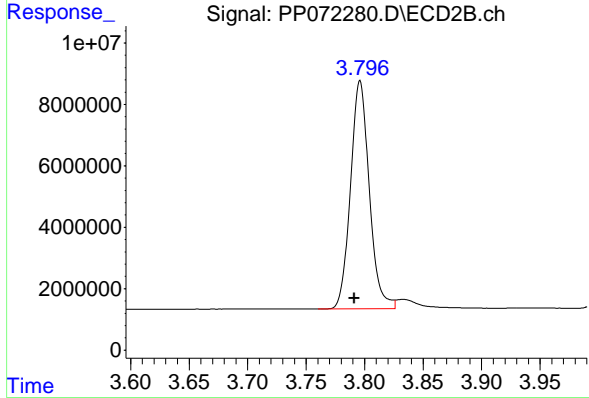




#1 Tetrachloro-m-xylene

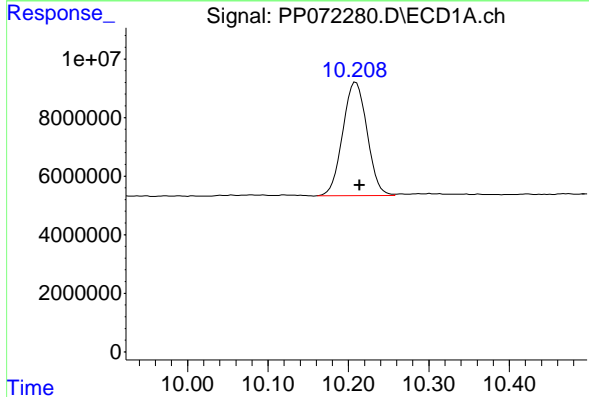
R.T.: 4.502 min
 Delta R.T.: 0.004 min
 Response: 104449688
 Conc: 51.94 ng/ml

Instrument :
 ECD_P
 ClientSampleId :
 AR1660CCC500



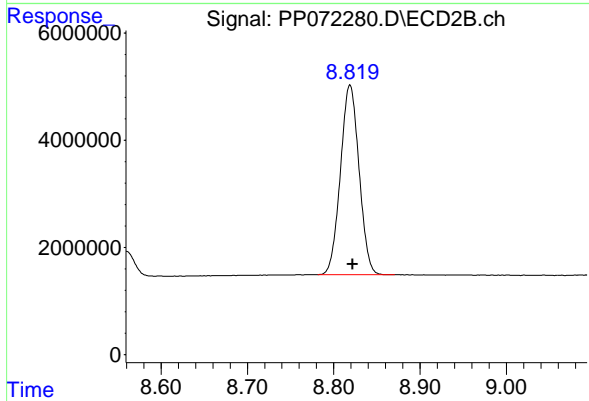
#1 Tetrachloro-m-xylene

R.T.: 3.796 min
 Delta R.T.: 0.005 min
 Response: 83112940
 Conc: 52.00 ng/ml



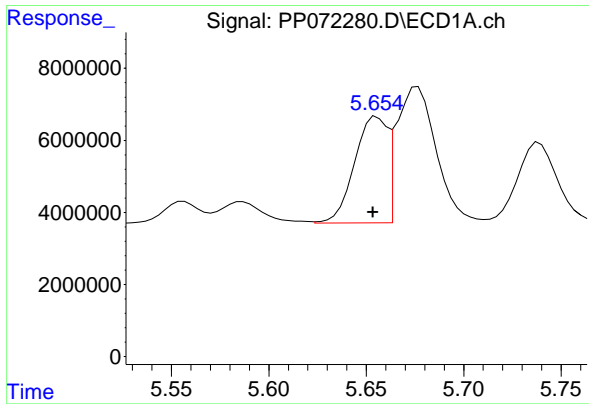
#2 Decachlorobiphenyl

R.T.: 10.209 min
 Delta R.T.: -0.005 min
 Response: 81369469
 Conc: 49.95 ng/ml



#2 Decachlorobiphenyl

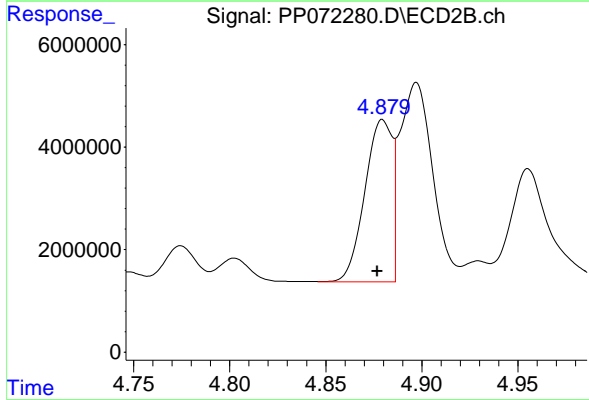
R.T.: 8.819 min
 Delta R.T.: -0.003 min
 Response: 52990511
 Conc: 50.06 ng/ml



#3 AR-1016-1

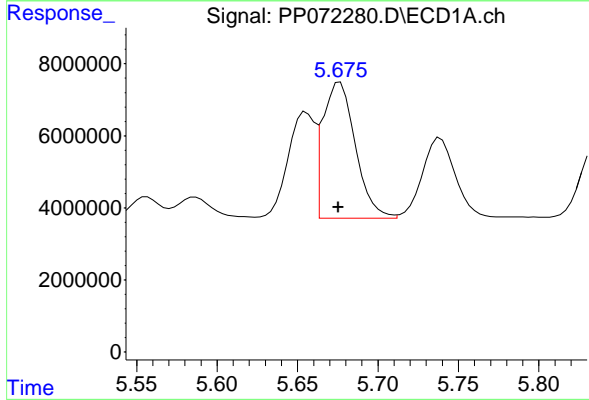
R.T.: 5.656 min
 Delta R.T.: 0.002 min
 Response: 34379515
 Conc: 457.88 ng/ml

Instrument :
 ECD_P
 ClientSampleId :
 AR1660CCC500



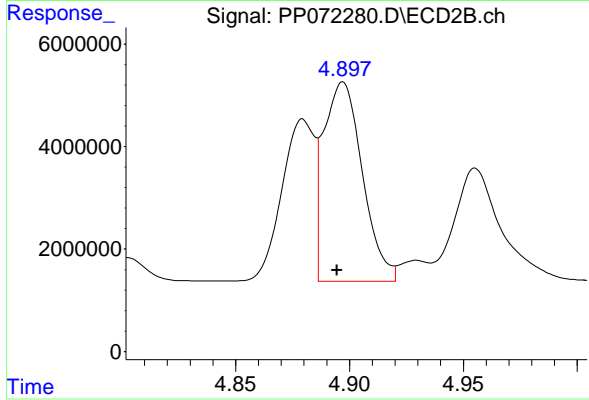
#3 AR-1016-1

R.T.: 4.880 min
 Delta R.T.: 0.003 min
 Response: 31418568
 Conc: 511.46 ng/ml



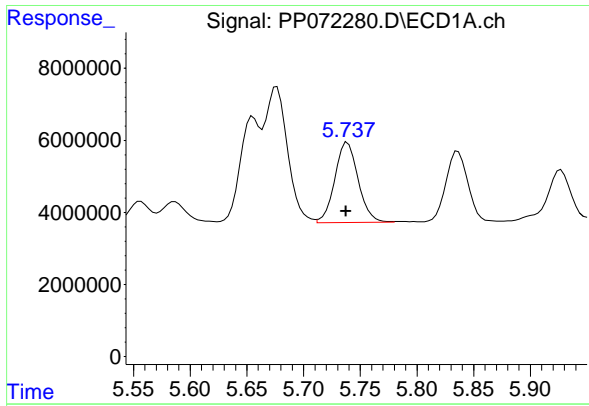
#4 AR-1016-2

R.T.: 5.676 min
 Delta R.T.: 0.001 min
 Response: 53261470
 Conc: 497.81 ng/ml



#4 AR-1016-2

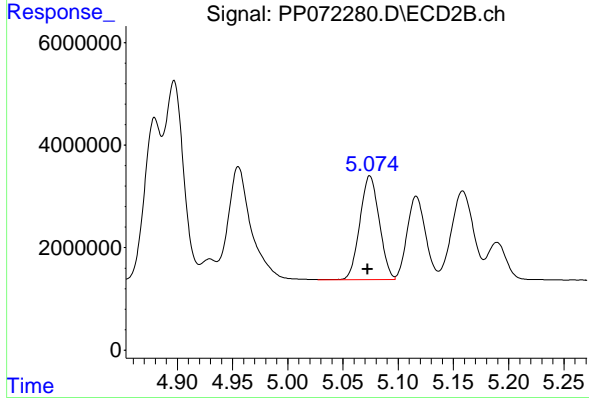
R.T.: 4.897 min
 Delta R.T.: 0.003 min
 Response: 46195225
 Conc: 526.21 ng/ml



#5 AR-1016-3

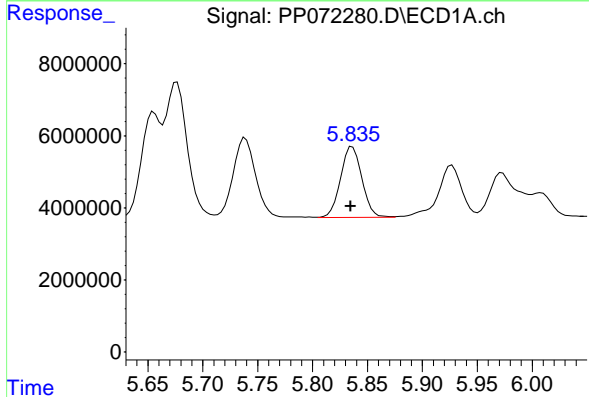
R.T.: 5.739 min
 Delta R.T.: 0.002 min
 Response: 31880287
 Conc: 486.24 ng/ml

Instrument :
 ECD_P
 ClientSampleId :
 AR1660CCC500



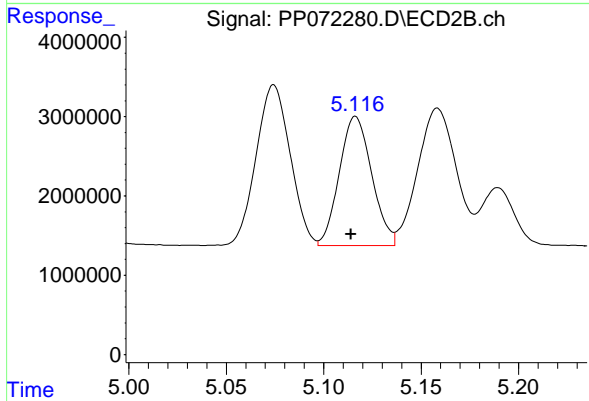
#5 AR-1016-3

R.T.: 5.074 min
 Delta R.T.: 0.002 min
 Response: 24767248
 Conc: 519.73 ng/ml



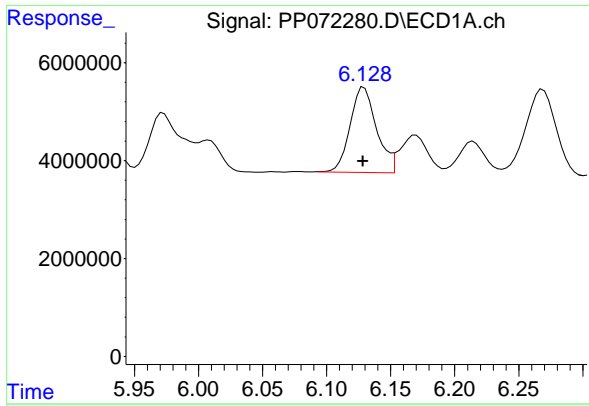
#6 AR-1016-4

R.T.: 5.836 min
 Delta R.T.: 0.002 min
 Response: 26567452
 Conc: 498.73 ng/ml



#6 AR-1016-4

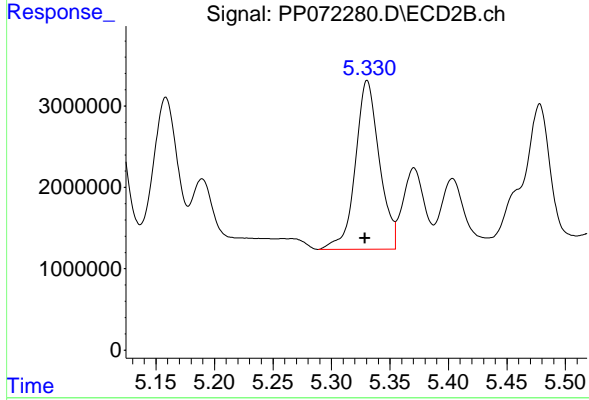
R.T.: 5.116 min
 Delta R.T.: 0.002 min
 Response: 18862485
 Conc: 495.79 ng/ml



#7 AR-1016-5

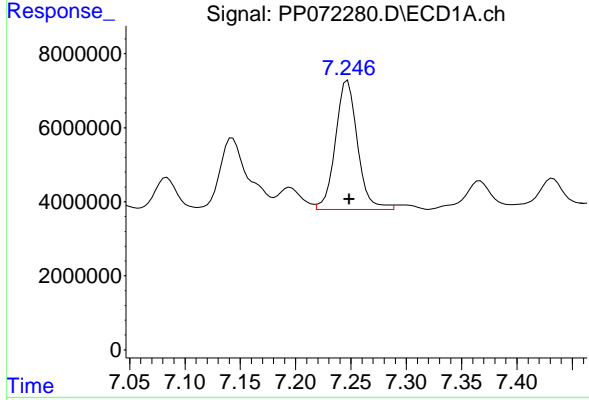
R.T.: 6.129 min
 Delta R.T.: 0.000 min
 Response: 25017385
 Conc: 511.51 ng/ml

Instrument :
 ECD_P
 ClientSampleId :
 AR1660CCC500



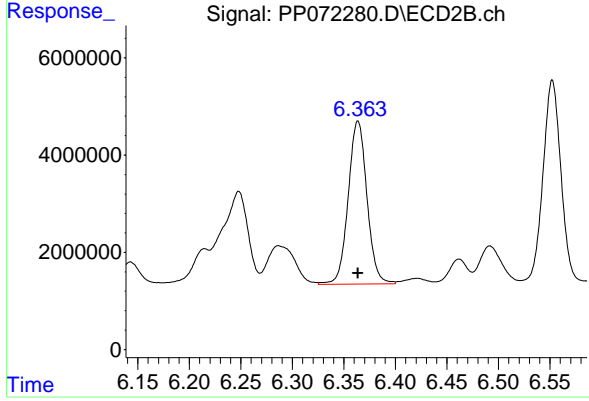
#7 AR-1016-5

R.T.: 5.331 min
 Delta R.T.: 0.002 min
 Response: 29510837
 Conc: 592.30 ng/ml



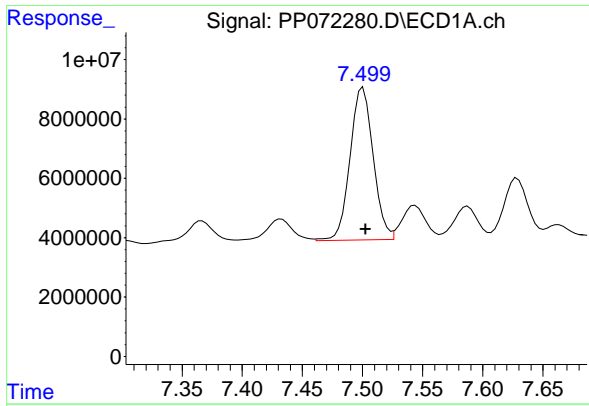
#31 AR-1260-1

R.T.: 7.247 min
 Delta R.T.: -0.002 min
 Response: 48574838
 Conc: 518.99 ng/ml



#31 AR-1260-1

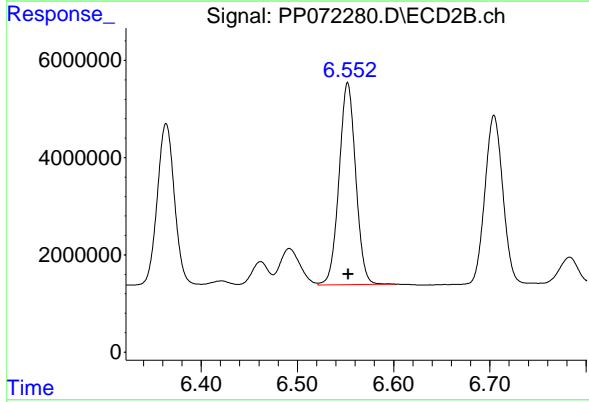
R.T.: 6.364 min
 Delta R.T.: 0.000 min
 Response: 42501313
 Conc: 532.91 ng/ml



#32 AR-1260-2

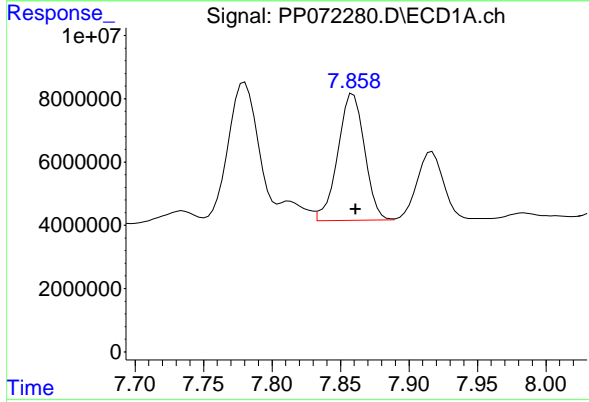
R.T.: 7.500 min
 Delta R.T.: -0.002 min
 Response: 68861402
 Conc: 479.90 ng/ml

Instrument :
 ECD_P
 ClientSampleId :
 AR1660CCC500



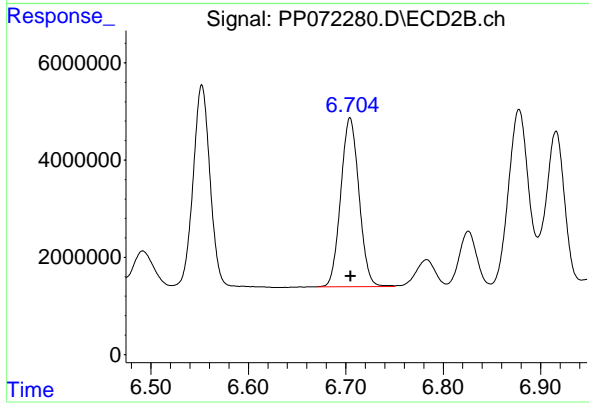
#32 AR-1260-2

R.T.: 6.552 min
 Delta R.T.: 0.000 min
 Response: 50150347
 Conc: 494.47 ng/ml



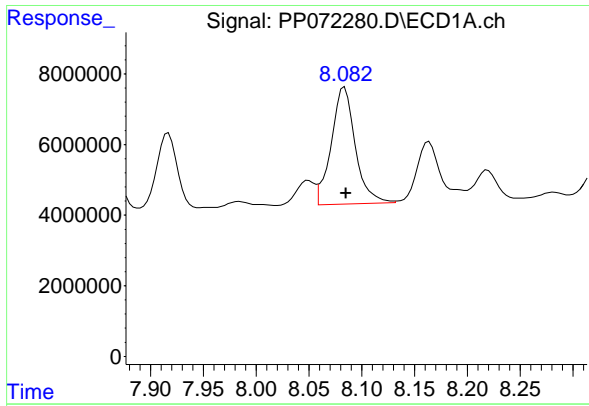
#33 AR-1260-3

R.T.: 7.859 min
 Delta R.T.: -0.002 min
 Response: 54487220
 Conc: 478.50 ng/ml



#33 AR-1260-3

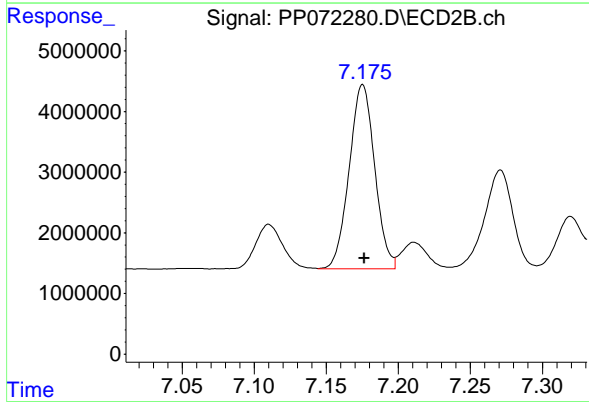
R.T.: 6.704 min
 Delta R.T.: 0.000 min
 Response: 45216743
 Conc: 520.32 ng/ml



#34 AR-1260-4

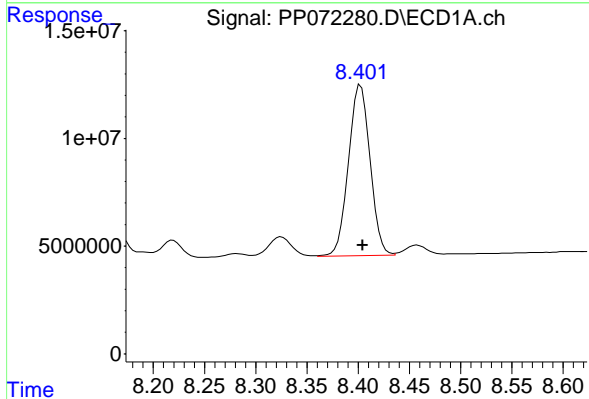
R.T.: 8.084 min
 Delta R.T.: -0.001 min
 Response: 52595855
 Conc: 490.16 ng/ml

Instrument :
 ECD_P
 ClientSampleId :
 AR1660CCC500



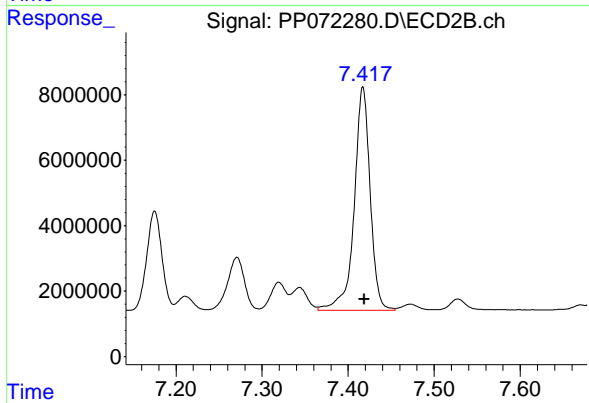
#34 AR-1260-4

R.T.: 7.175 min
 Delta R.T.: -0.001 min
 Response: 37464117
 Conc: 519.68 ng/ml



#35 AR-1260-5

R.T.: 8.402 min
 Delta R.T.: -0.002 min
 Response: 116032983
 Conc: 490.29 ng/ml



#35 AR-1260-5

R.T.: 7.417 min
 Delta R.T.: -0.001 min
 Response: 88068174
 Conc: 507.24 ng/ml