

Data Path : Z:\pestpcbsrv\HPCHEM1\ECD\_P\Data\PP052125\  
 Data File : PP072284.D  
 Signal(s) : Signal #1: ECD1A.ch Signal #2: ECD2B.ch  
 Acq On : 22 May 2025 04:16  
 Operator : YP\AJ  
 Sample : I.BLK  
 Misc :  
 ALS Vial : 2 Sample Multiplier: 1

Instrument :  
 ECD\_P  
 ClientSampleId :  
 I.BLK

Integration File signal 1: autoint1.e  
 Integration File signal 2: autoint2.e  
 Quant Time: May 22 06:20:02 2025  
 Quant Method : Z:\pestpcbsrv\HPCHEM1\ECD\_P\methods\PP051925.M  
 Quant Title : GC EXTRACTABLES  
 QLast Update : Tue May 20 03:29:33 2025  
 Response via : Initial Calibration  
 Integrator: ChemStation

Volume Inj. : 2 µl  
 Signal #1 Phase : ZB-MR1 Signal #2 Phase: ZB-MR2  
 Signal #1 Info : 30Mx0.32mmx 0.50µ Signal #2 Info : 30M x 0.32mm x 0.25µm

Compound	RT#1	RT#2	Resp#1	Resp#2	ng/ml	ng/ml
-----						
System Monitoring Compounds						
1) SA Tetrachlo...	4.501	3.797	36219001	30279259	18.012	18.944
2) SA Decachlor...	10.208	8.820	30159251	21677264	18.513	20.477

Target Compounds

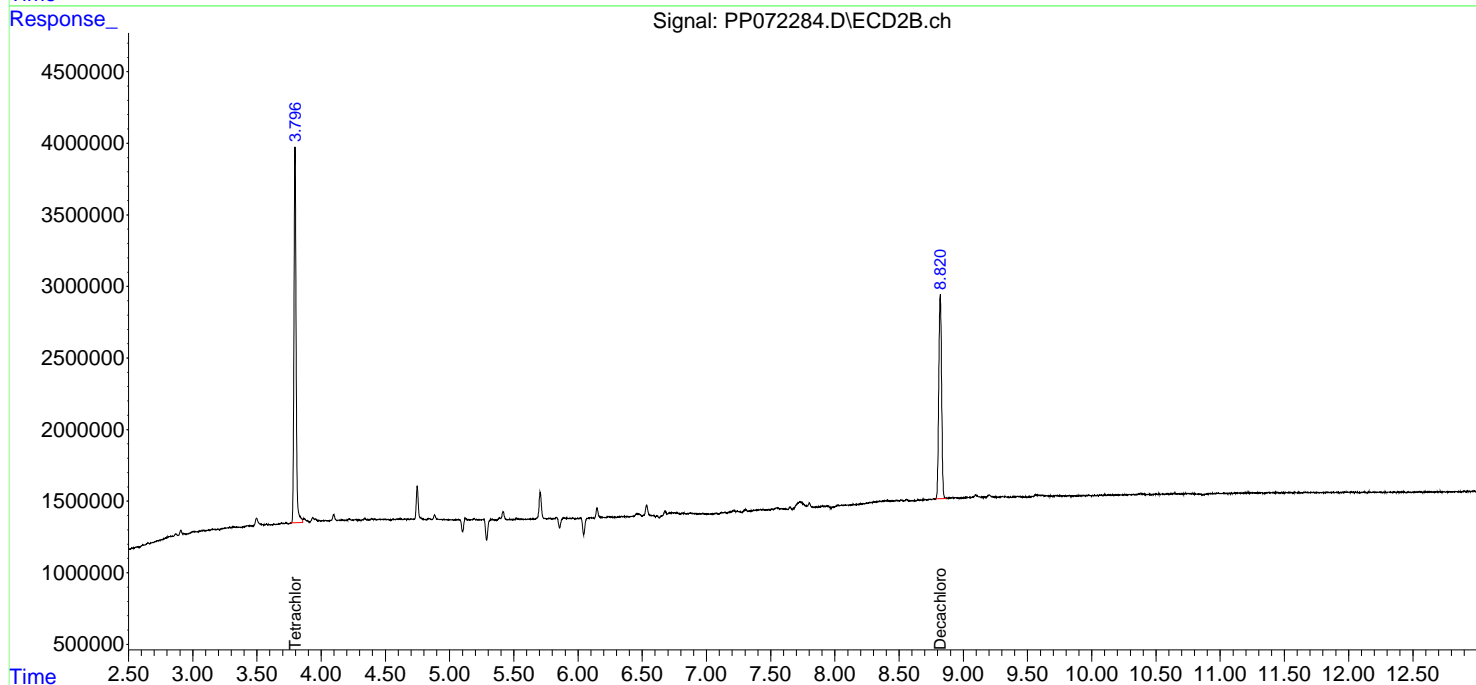
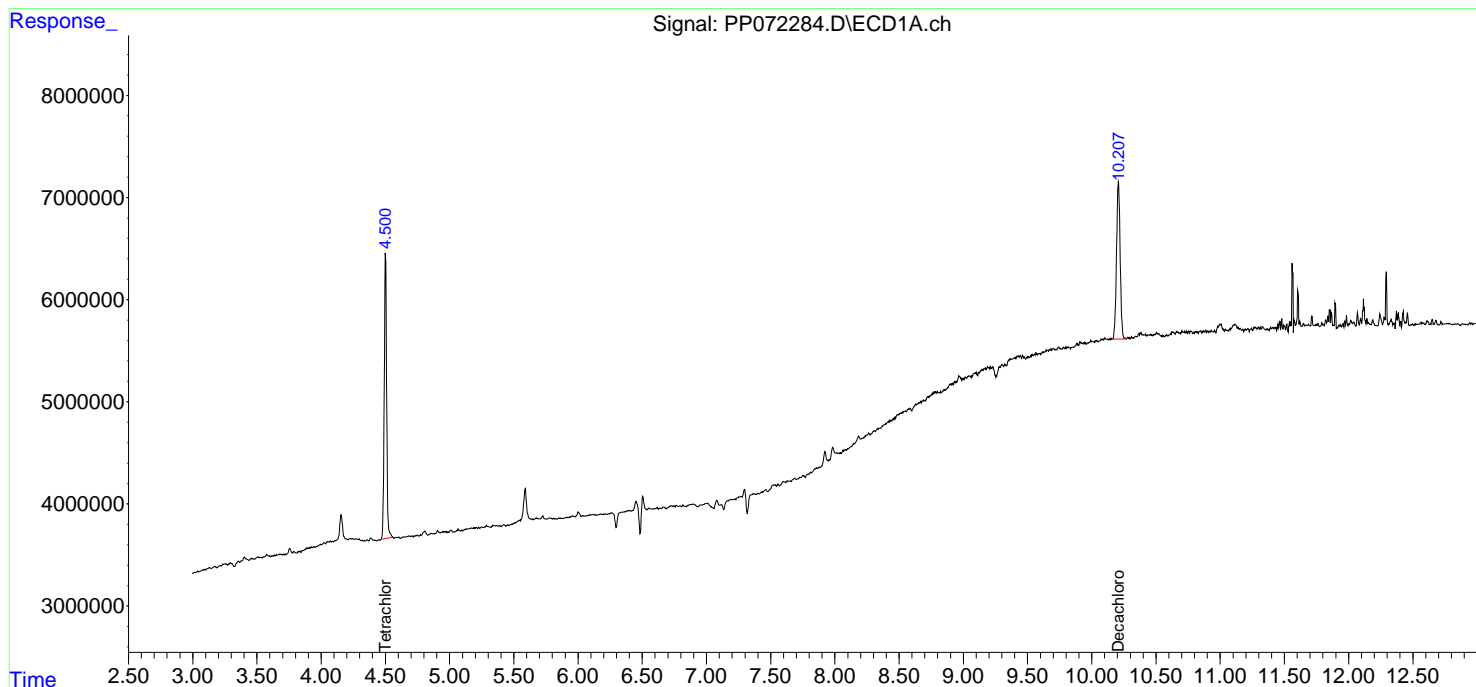
(f)=RT Delta > 1/2 Window (#)=Amounts differ by > 25% (m)=manual int.

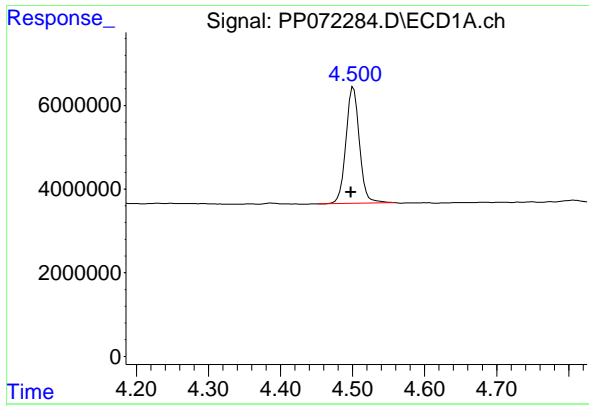
Data Path : Z:\pestpcbsrv\HPCHEM1\ECD\_P\Data\PP052125\  
Data File : PP072284.D  
Signal(s) : Signal #1: ECD1A.ch Signal #2: ECD2B.ch  
Acq On : 22 May 2025 04:16  
Operator : YP\AJ  
Sample : I.BLK  
Misc :  
ALS Vial : 2 Sample Multiplier: 1

Instrument :  
ECD\_P  
ClientSampleId :  
I.BLK

Integration File signal 1: autoint1.e  
Integration File signal 2: autoint2.e  
Quant Time: May 22 06:20:02 2025  
Quant Method : Z:\pestpcbsrv\HPCHEM1\ECD\_P\methods\PP051925.M  
Quant Title : GC EXTRACTABLES  
QLast Update : Tue May 20 03:29:33 2025  
Response via : Initial Calibration  
Integrator: ChemStation

Volume Inj. : 2 µl  
Signal #1 Phase : ZB-MR1 Signal #2 Phase: ZB-MR2  
Signal #1 Info : 30Mx0.32mmx 0.50µm Signal #2 Info : 30M x 0.32mm x 0.25µm

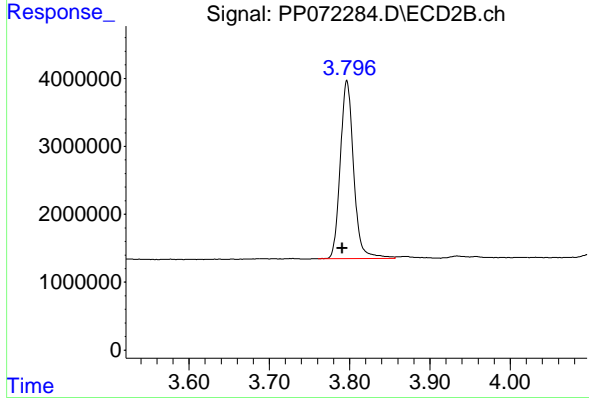




#1 Tetrachloro-m-xylene

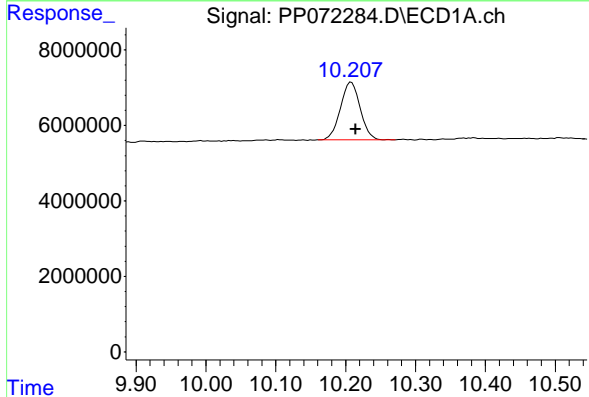
R.T.: 4.501 min  
 Delta R.T.: 0.003 min  
 Response: 36219001  
 Conc: 18.01 ng/ml

Instrument :  
 ECD\_P  
 ClientSampleId :  
 I.BLK



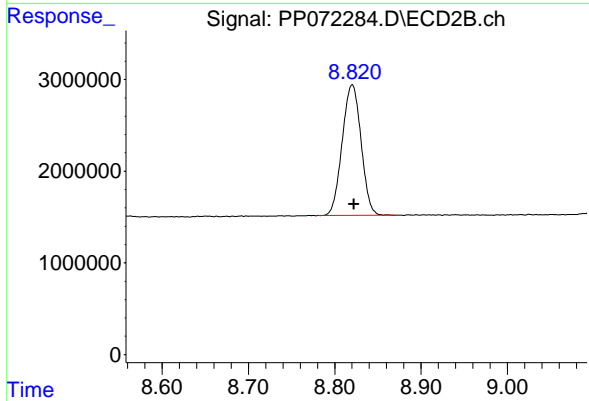
#1 Tetrachloro-m-xylene

R.T.: 3.797 min  
 Delta R.T.: 0.006 min  
 Response: 30279259  
 Conc: 18.94 ng/ml



#2 Decachlorobiphenyl

R.T.: 10.208 min  
 Delta R.T.: -0.006 min  
 Response: 30159251  
 Conc: 18.51 ng/ml



#2 Decachlorobiphenyl

R.T.: 8.820 min  
 Delta R.T.: -0.002 min  
 Response: 21677264  
 Conc: 20.48 ng/ml