

Data Path : Z:\pestpcbsrv\HPCHEM1\ECD_P\Data\PP052219\
 Data File : PP030248.D
 Signal(s) : Signal #1: ECD1A.CH Signal #2: ECD2B.CH
 Acq On : 22 May 2019 21:28
 Operator : SM\MA
 Sample : HSTDICC750
 Misc :
 ALS Vial : 5 Sample Multiplier: 1

Instrument :
 ECD_P
 ClientSampleId :
 HSTDICC750

Integration File signal 1: autoint1.e
 Integration File signal 2: autoint2.e
 Quant Time: May 23 06:00:16 2019
 Quant Method : Z:\pestpcbsrv\HPCHEM1\ECD_P\methods\PP052219.M
 Quant Title : 8080.M
 QLast Update : Thu May 23 05:58:57 2019
 Response via : Initial Calibration
 Integrator: ChemStation 6890 Scale Mode: Large solvent peaks clipped

Volume Inj. : 2 µl
 Signal #1 Phase : ZB-CLPesticides-1 Signal #2 Phase: ZB-CLPesticides-2
 Signal #1 Info : 30M x 0.32mm x0.5 Signal #2 Info : 30M x 0.32mm x 0.25µm

Compound	RT#1	RT#2	Resp#1	Resp#2	ng/ml	ng/ml

System Monitoring Compounds						
4) S 2,4-DCAA	12.818	12.905	853.5E6	729.2E6	750.000	750.000
Target Compounds						
1) T Dalapon	3.399	3.121	630.7E6	488.5E6	682.500	682.500
2) T 3,5-DICHL...	11.176	10.957	1359.1E6	918.6E6	697.500	697.500
3) T 4-Nitroph...	12.423	12.055	699.3E6	354.2E6	682.500	682.500
5) T DICAMBA	13.157	13.226	3704.3E6	2823.2E6	705.000	705.000
6) T MCPP	13.493	13.417	214.9E6	162.2E6	70.500	70.500
7) T MCPA	13.756	13.820	290.0E6	238.2E6	69.750	69.750
8) T DICHLORPROP	14.374	14.359	836.4E6	676.7E6	705.000	705.000
9) T 2,4-D	14.744	14.859	820.3E6	684.4E6	705.000	705.000
10) T Pentachlo...	15.200	15.530	12940.2E6	9488.7E6	712.500	712.500
11) T 2,4,5-TP ...	16.049	16.072	4658.3E6	3729.3E6	712.500	712.500
12) T 2,4,5-T	16.461	16.747	3676.1E6	3483.2E6	712.500	712.500
13) T 2,4-DB	17.232	17.339	567.1E6	487.8E6	712.500	712.500
14) T DINOSEB	18.801	17.781	1579.7E6	1169.5E6	705.000	705.000
15) T Picloram	18.578	19.189	4359.3E6	3569.5E6	712.500	712.500
16) T DCPA	19.156	19.059	5485.0E6	4328.3E6	720.000	720.000

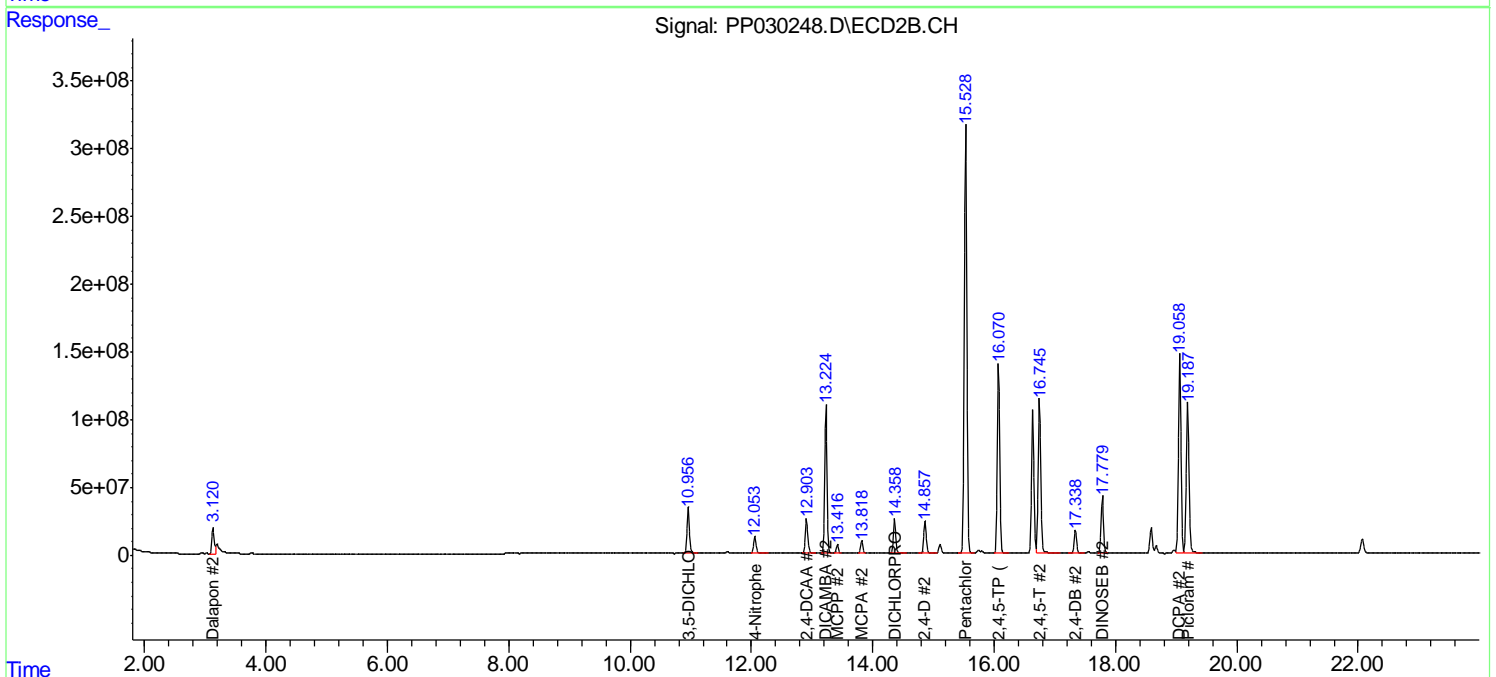
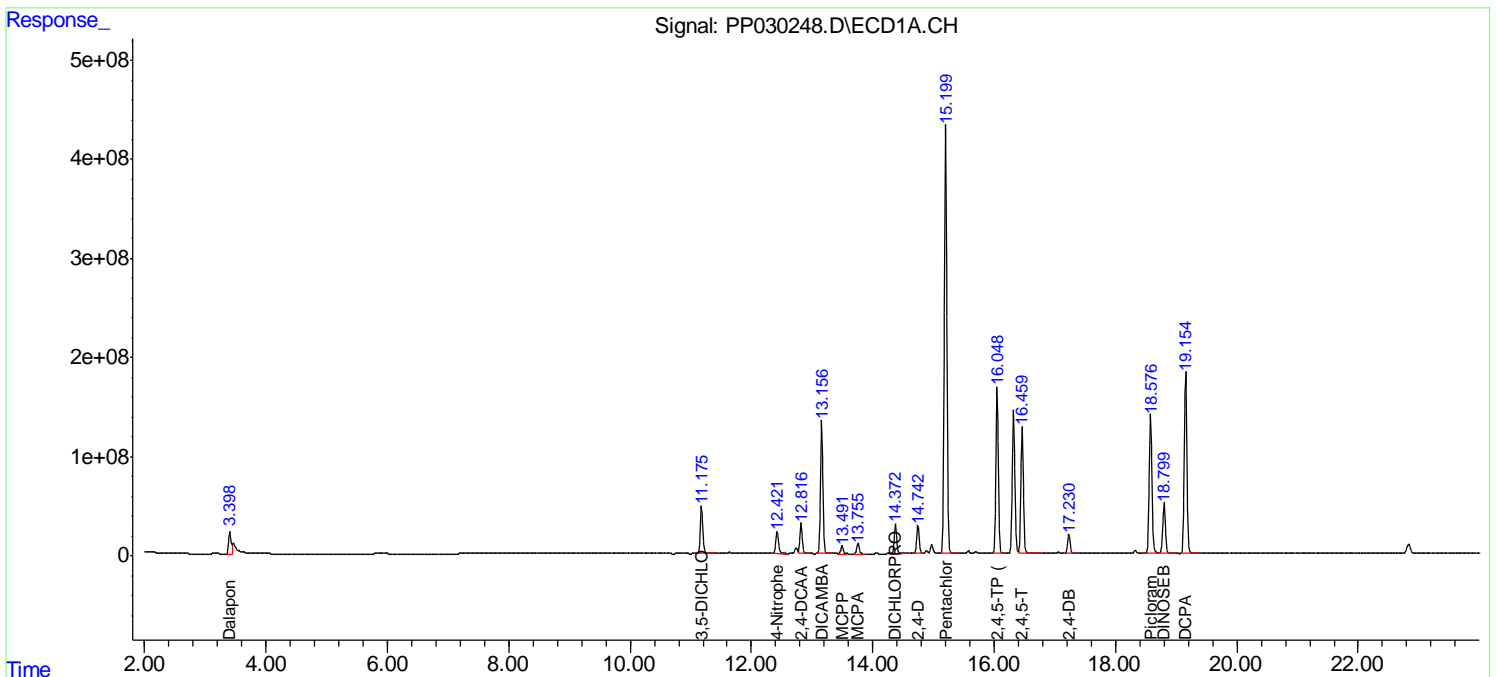
(f)=RT Delta > 1/2 Window (#)=Amounts differ by > 25% (m)=manual int.

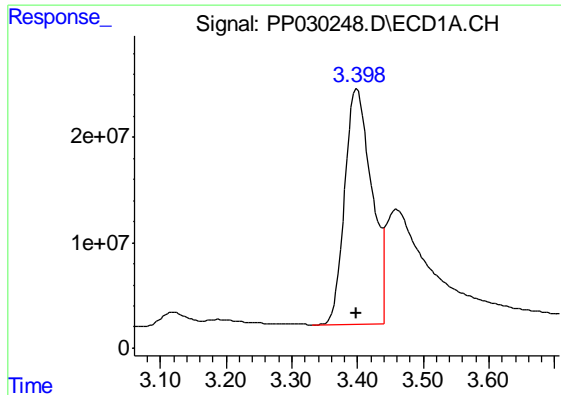
Data Path : Z:\pestpcbsrv\HPCHEM1\ECD_P\Data\PP052219\
 Data File : PP030248.D
 Signal(s) : Signal #1: ECD1A.CH Signal #2: ECD2B.CH
 Acq On : 22 May 2019 21:28
 Operator : SM\MA
 Sample : HSTDICC750
 Misc :
 ALS Vial : 5 Sample Multiplier: 1

Instrument :
 ECD_P
 Client Sampled :
 HSTDICC750

Integration File signal 1: autoint1.e
 Integration File signal 2: autoint2.e
 Quant Time: May 23 06:00:16 2019
 Quant Method : Z:\pestpcbsrv\HPCHEM1\ECD_P\methods\PP052219.M
 Quant Title : 8080.M
 QLast Update : Thu May 23 05:58:57 2019
 Response via : Initial Calibration
 Integrator: ChemStation 6890 Scale Mode: Large solvent peaks clipped

Volume Inj. : 2 µl
 Signal #1 Phase : ZB-CLPesticides-1 Signal #2 Phase: ZB-CLPesticides-2
 Signal #1 Info : 30M x 0.32mm x0.5 Signal #2 Info : 30M x 0.32mm x 0.25µm

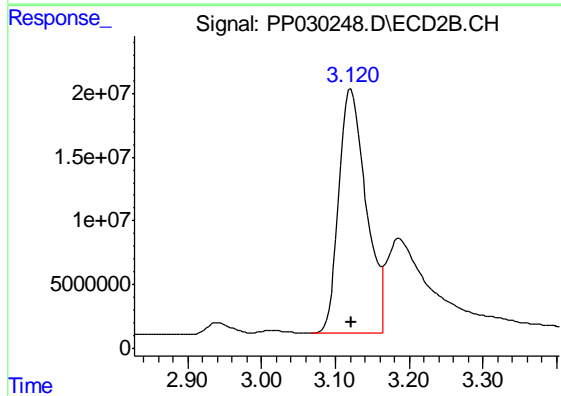




#1 Dalapon

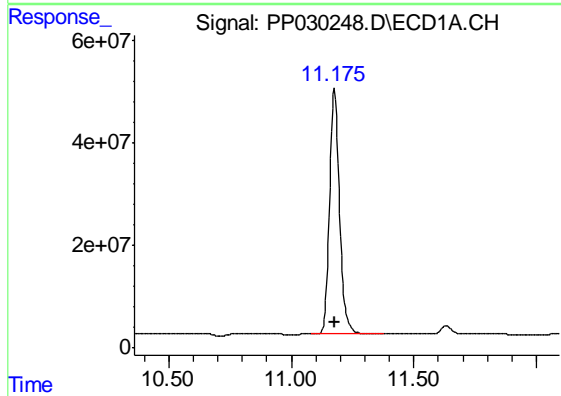
R.T.: 3.399 min
 Delta R.T.: 0.000 min
 Response: 630713376
 Conc: 682.50 ng/ml

Instrument :
 ECD_P
 ClientSampleId :
 HSTDICC750



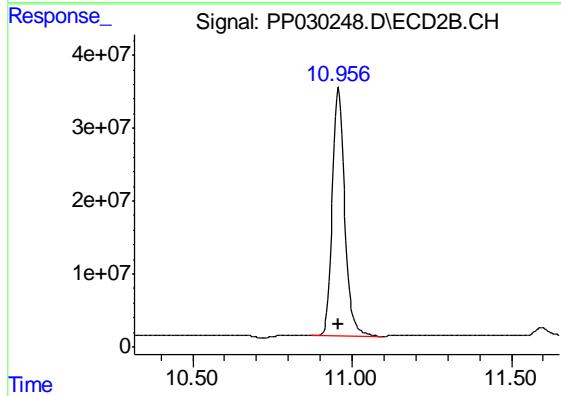
#1 Dalapon

R.T.: 3.121 min
 Delta R.T.: 0.000 min
 Response: 488491483
 Conc: 682.50 ng/ml



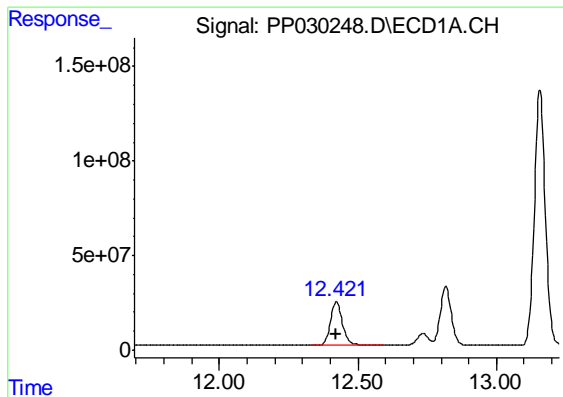
#2 3,5-DICHLOROBENZOIC ACID

R.T.: 11.176 min
 Delta R.T.: 0.000 min
 Response: 1359073124
 Conc: 697.50 ng/ml



#2 3,5-DICHLOROBENZOIC ACID

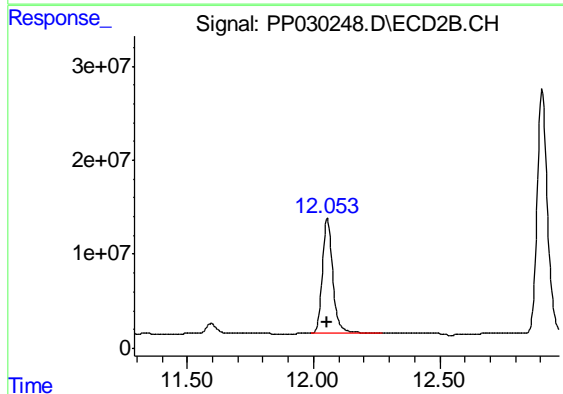
R.T.: 10.957 min
 Delta R.T.: 0.000 min
 Response: 918614032
 Conc: 697.50 ng/ml



#3 4-Nitrophenol

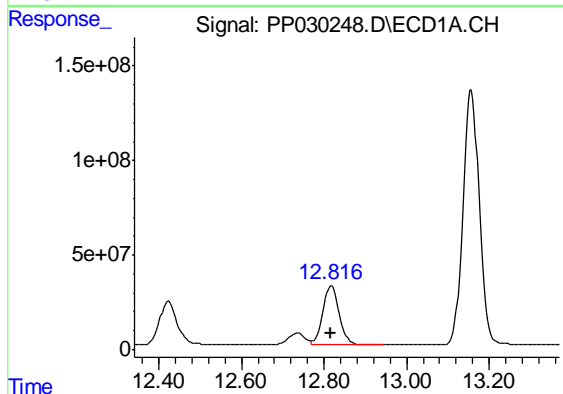
R.T.: 12.423 min
 Delta R.T.: 0.000 min
 Response: 699314594
 Conc: 682.50 ng/ml

Instrument :
 ECD_P
 ClientSampleId :
 HSTDICC750



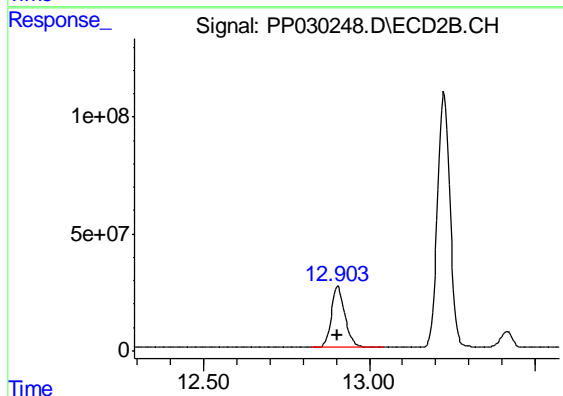
#3 4-Nitrophenol

R.T.: 12.055 min
 Delta R.T.: 0.000 min
 Response: 354180747
 Conc: 682.50 ng/ml



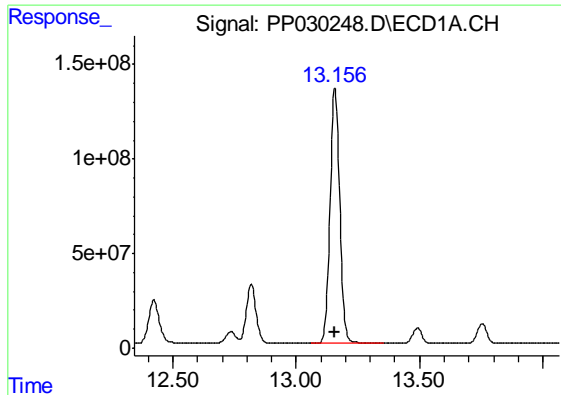
#4 2,4-DCAA

R.T.: 12.818 min
 Delta R.T.: 0.000 min
 Response: 853502209
 Conc: 750.00 ng/ml



#4 2,4-DCAA

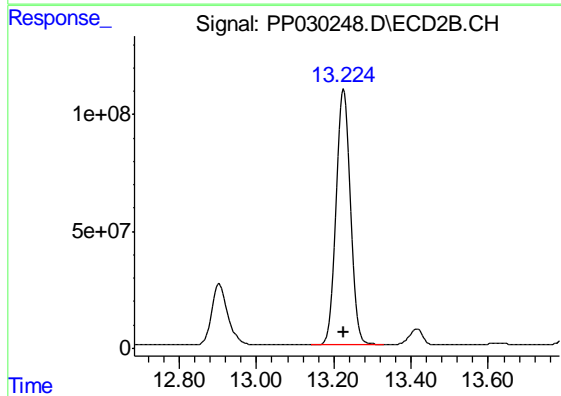
R.T.: 12.905 min
 Delta R.T.: 0.000 min
 Response: 729198389
 Conc: 750.00 ng/ml



#5 DICAMBA

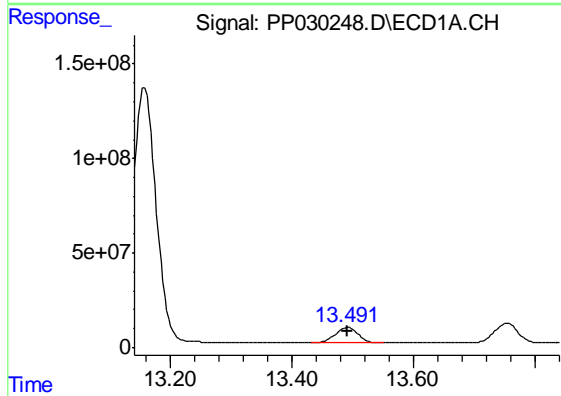
R.T.: 13.157 min
 Delta R.T.: 0.000 min
 Response: 3704270639
 Conc: 705.00 ng/ml

Instrument :
 ECD_P
 ClientSampleId :
 HSTDICC750



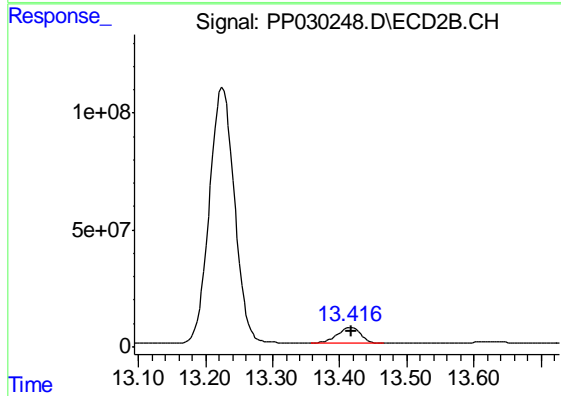
#5 DICAMBA

R.T.: 13.226 min
 Delta R.T.: 0.000 min
 Response: 2823171181
 Conc: 705.00 ng/ml



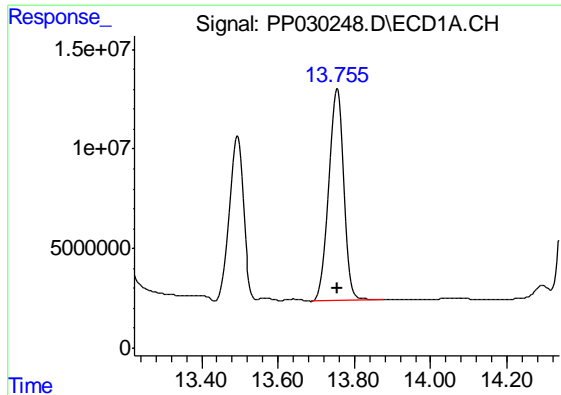
#6 MCPP

R.T.: 13.493 min
 Delta R.T.: 0.000 min
 Response: 214890447
 Conc: 70.50 ug/ml



#6 MCPP

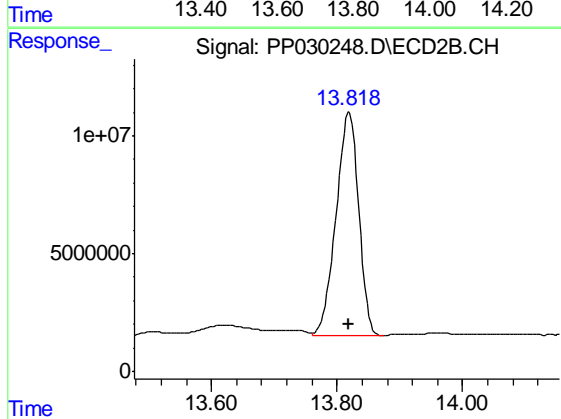
R.T.: 13.417 min
 Delta R.T.: 0.000 min
 Response: 162221683
 Conc: 70.50 ug/ml



#7 MCPA

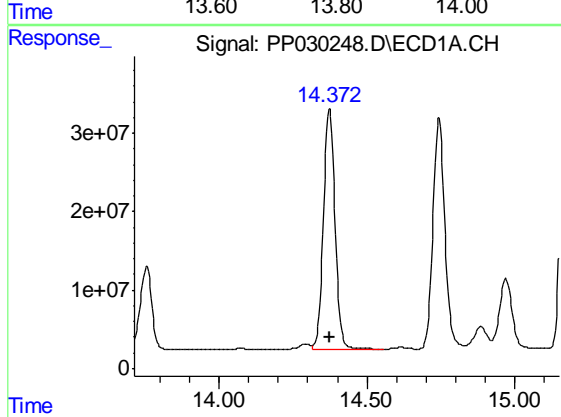
R.T.: 13.756 min
Delta R.T.: 0.000 min
Response: 289963104
Conc: 69.75 ug/ml

Instrument :
ECD_P
ClientSampleId :
HSTDICC750



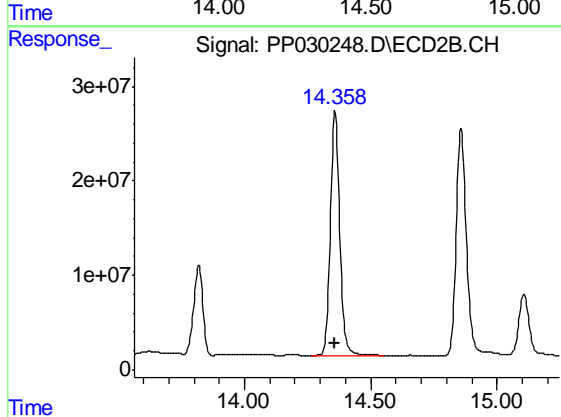
#7 MCPA

R.T.: 13.820 min
Delta R.T.: 0.000 min
Response: 238208848
Conc: 69.75 ug/ml



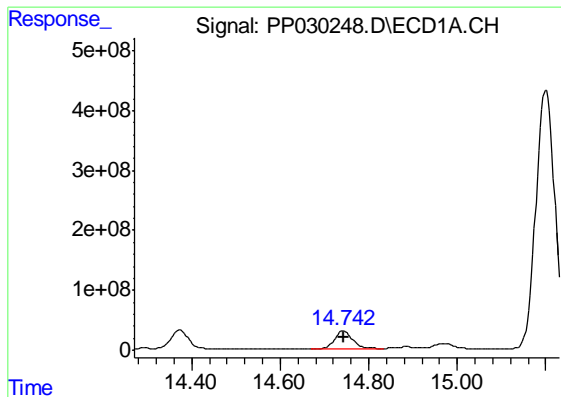
#8 DICHLORPROP

R.T.: 14.374 min
Delta R.T.: 0.000 min
Response: 836382467
Conc: 705.00 ng/ml



#8 DICHLORPROP

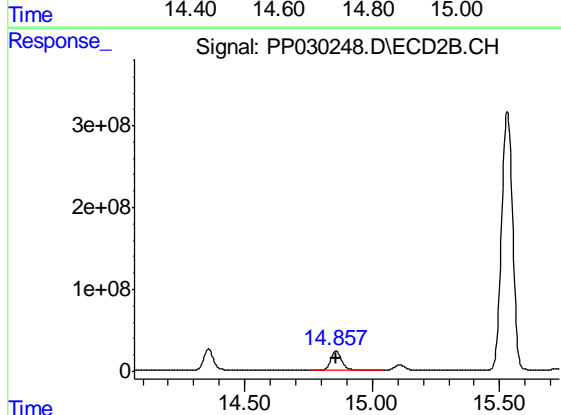
R.T.: 14.359 min
Delta R.T.: 0.000 min
Response: 676729995
Conc: 705.00 ng/ml



#9 2,4-D

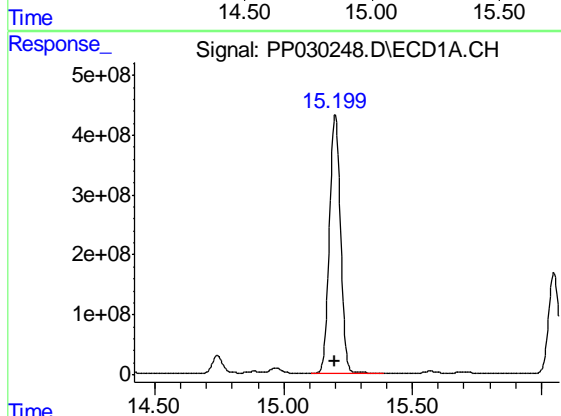
R.T.: 14.744 min
Delta R.T.: 0.000 min
Response: 820324913
Conc: 705.00 ng/ml

Instrument :
ECD_P
ClientSampleId :
HSTDICC750



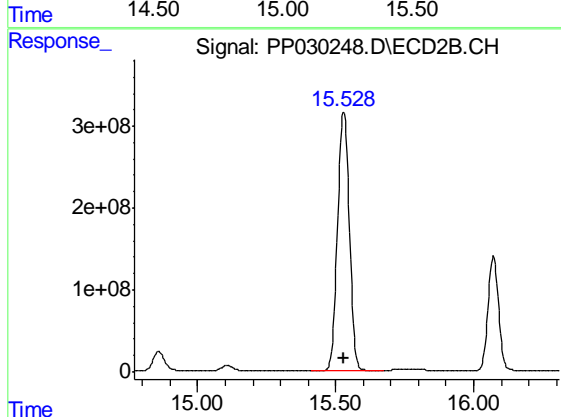
#9 2,4-D

R.T.: 14.859 min
Delta R.T.: 0.000 min
Response: 684438815
Conc: 705.00 ng/ml



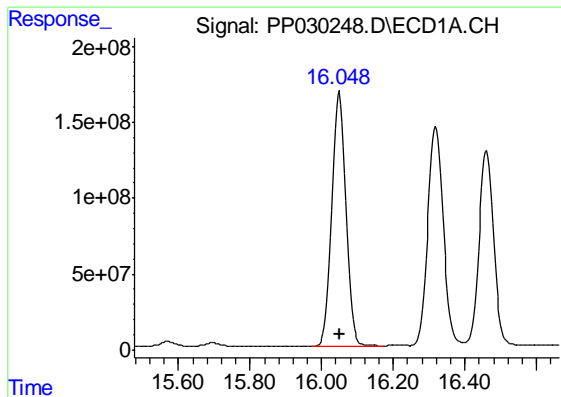
#10 Pentachlorophenol

R.T.: 15.200 min
Delta R.T.: 0.000 min
Response: 12940245821
Conc: 712.50 ng/ml



#10 Pentachlorophenol

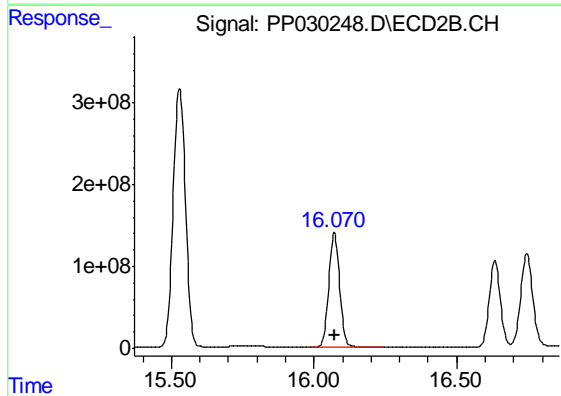
R.T.: 15.530 min
Delta R.T.: 0.000 min
Response: 9488732430
Conc: 712.50 ng/ml



#11 2,4,5-TP (SILVEX)

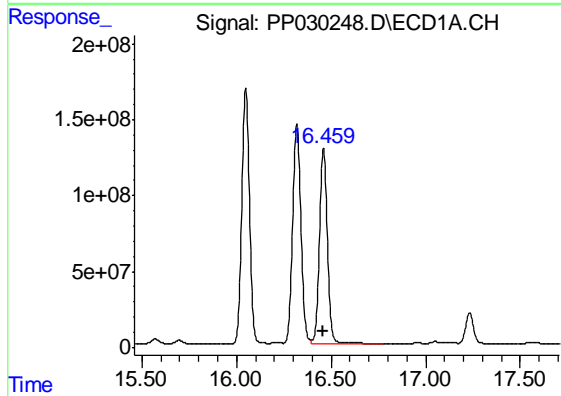
R.T.: 16.049 min
 Delta R.T.: 0.000 min
 Response: 4658280905
 Conc: 712.50 ng/ml

Instrument :
 ECD_P
 ClientSampleId :
 HSTDICC750



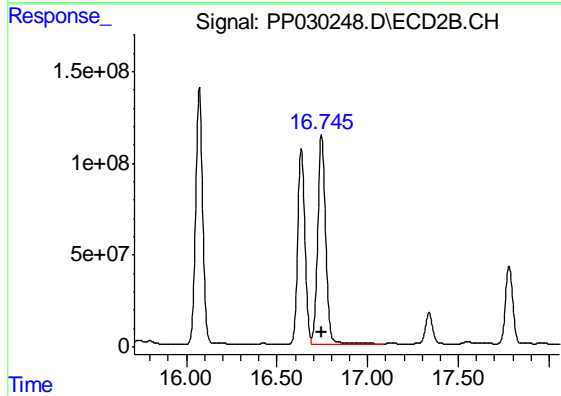
#11 2,4,5-TP (SILVEX)

R.T.: 16.072 min
 Delta R.T.: 0.000 min
 Response: 3729287128
 Conc: 712.50 ng/ml



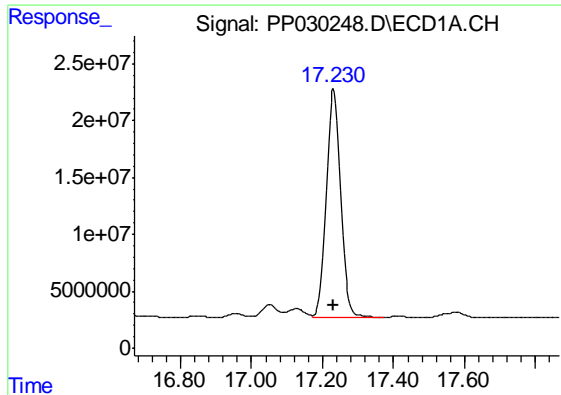
#12 2,4,5-T

R.T.: 16.461 min
 Delta R.T.: 0.000 min
 Response: 3676060110
 Conc: 712.50 ng/ml



#12 2,4,5-T

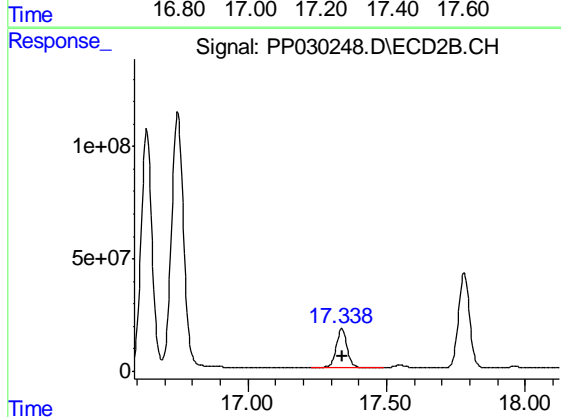
R.T.: 16.747 min
 Delta R.T.: 0.000 min
 Response: 3483196300
 Conc: 712.50 ng/ml



#13 2,4-DB

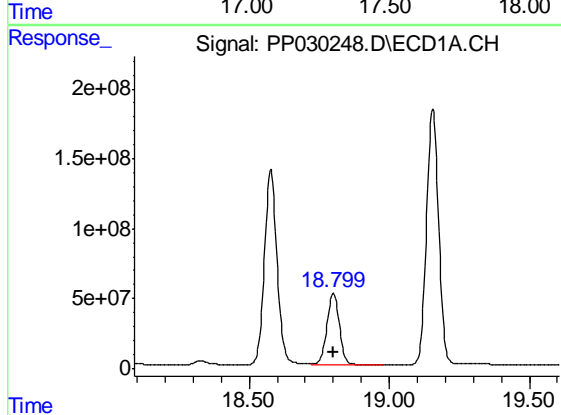
R.T.: 17.232 min
 Delta R.T.: 0.000 min
 Response: 567149184
 Conc: 712.50 ng/ml

Instrument :
 ECD_P
 ClientSampleId :
 HSTDICC750



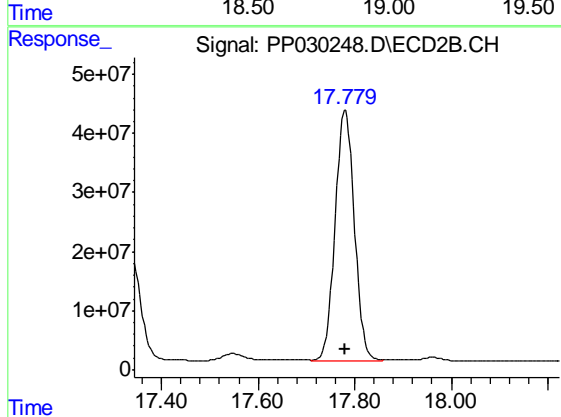
#13 2,4-DB

R.T.: 17.339 min
 Delta R.T.: 0.000 min
 Response: 487836703
 Conc: 712.50 ng/ml



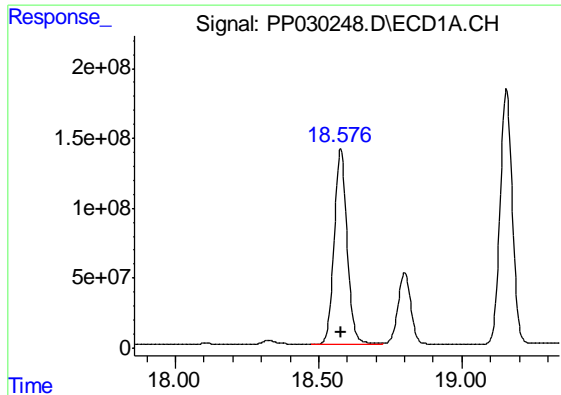
#14 DINOSEB

R.T.: 18.801 min
 Delta R.T.: 0.000 min
 Response: 1579749905
 Conc: 705.00 ng/ml



#14 DINOSEB

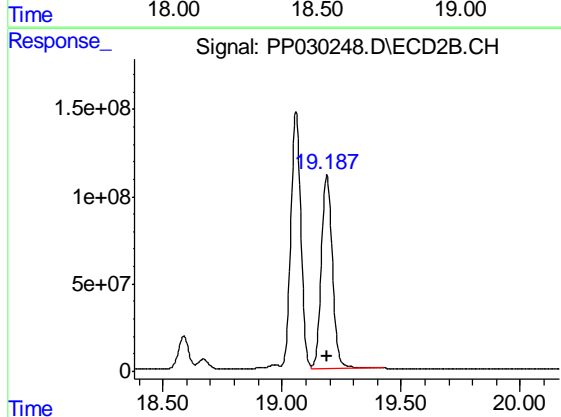
R.T.: 17.781 min
 Delta R.T.: 0.000 min
 Response: 1169547707
 Conc: 705.00 ng/ml



#15 Picloram

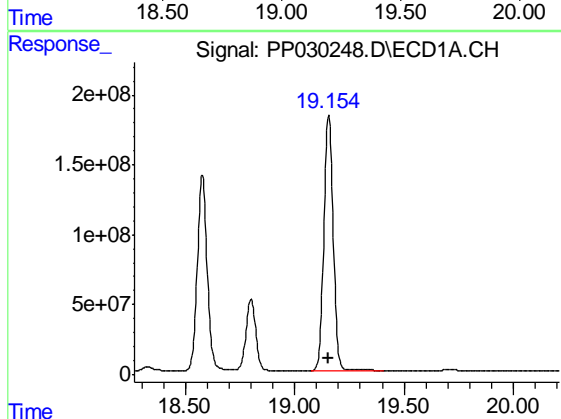
R.T.: 18.578 min
 Delta R.T.: 0.000 min
 Response: 4359293054
 Conc: 712.50 ng/ml

Instrument :
 ECD_P
 ClientSampleId :
 HSTDICC750



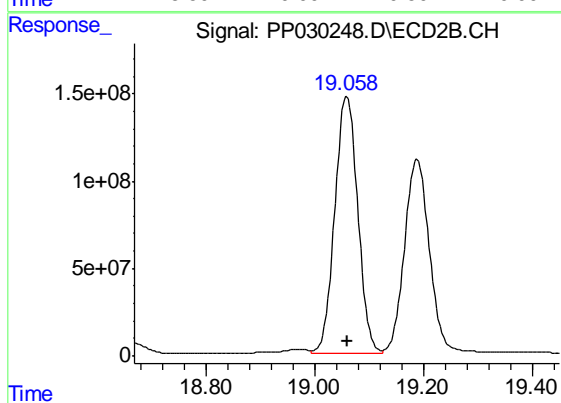
#15 Picloram

R.T.: 19.189 min
 Delta R.T.: 0.000 min
 Response: 3569509345
 Conc: 712.50 ng/ml



#16 DCPA

R.T.: 19.156 min
 Delta R.T.: 0.000 min
 Response: 5484995278
 Conc: 720.00 ng/ml



#16 DCPA

R.T.: 19.059 min
 Delta R.T.: 0.000 min
 Response: 4328348186
 Conc: 720.00 ng/ml