

Data Path : Z:\pestpcbsrv\HPCHEM1\ECD_P\Data\PP052224\
 Data File : PP065164.D
 Signal(s) : Signal #1: ECD1A.ch Signal #2: ECD2B.ch
 Acq On : 22 May 2024 16:46
 Operator : YP\AJ
 Sample : P2564-01
 Misc :
 ALS Vial : 24 Sample Multiplier: 1

Instrument :
 ECD_P
ClientSampleId :
 HD-01-05212024

Manual Integrations
APPROVED

Reviewed By :Yogesh Patel 05/23/2024
 Supervised By :Ankita Jodhani 05/23/2024

Integration File signal 1: autoint1.e
 Integration File signal 2: autoint2.e
 Quant Time: May 23 02:03:52 2024
 Quant Method : Z:\pestpcbsrv\HPCHEM1\ECD_P\methods\PP052124.M
 Quant Title : GC EXTRACTABLES
 QLast Update : Tue May 21 18:19:41 2024
 Response via : Initial Calibration
 Integrator: ChemStation

Volume Inj. : 2 µl
 Signal #1 Phase : ZB-MR1 Signal #2 Phase: ZB-MR2
 Signal #1 Info : 30Mx0.32mmx 0.50µ Signal #2 Info : 30M x 0.32mm x 0.25µm

Compound	RT#1	RT#2	Resp#1	Resp#2	ng/ml	ng/ml

System Monitoring Compounds						
1) SA Tetrachlo...	4.471	3.754	33775206	33435909	21.400	22.025
2) SA Decachlor...	10.211	8.827	29037849	24453089	22.332	18.552m

Target Compounds

(f)=RT Delta > 1/2 Window (#)=Amounts differ by > 25% (m)=manual int.

Data Path : Z:\pestpcbsrv\HPCHEM1\ECD_P\Data\PP052224\
 Data File : PP065164.D
 Signal(s) : Signal #1: ECD1A.ch Signal #2: ECD2B.ch
 Acq On : 22 May 2024 16:46
 Operator : YP\AJ
 Sample : P2564-01
 Misc :
 ALS Vial : 24 Sample Multiplier: 1

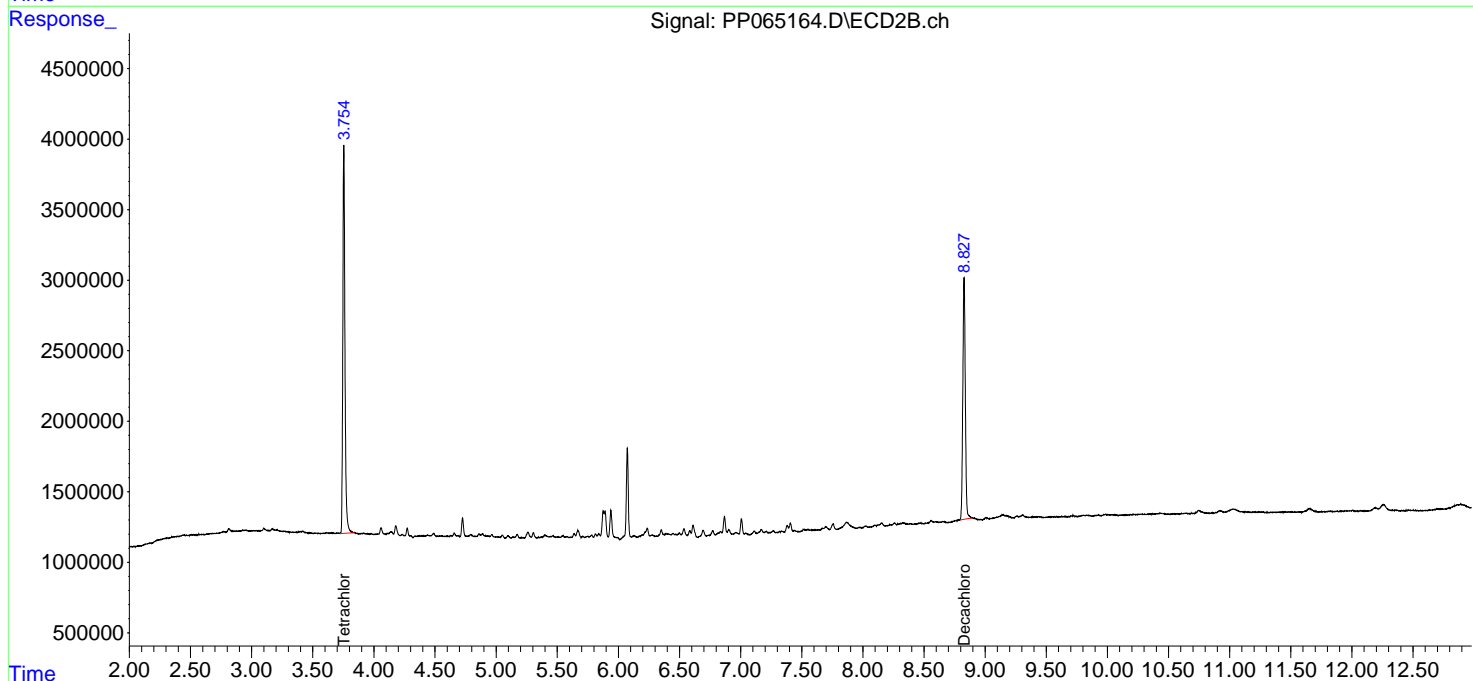
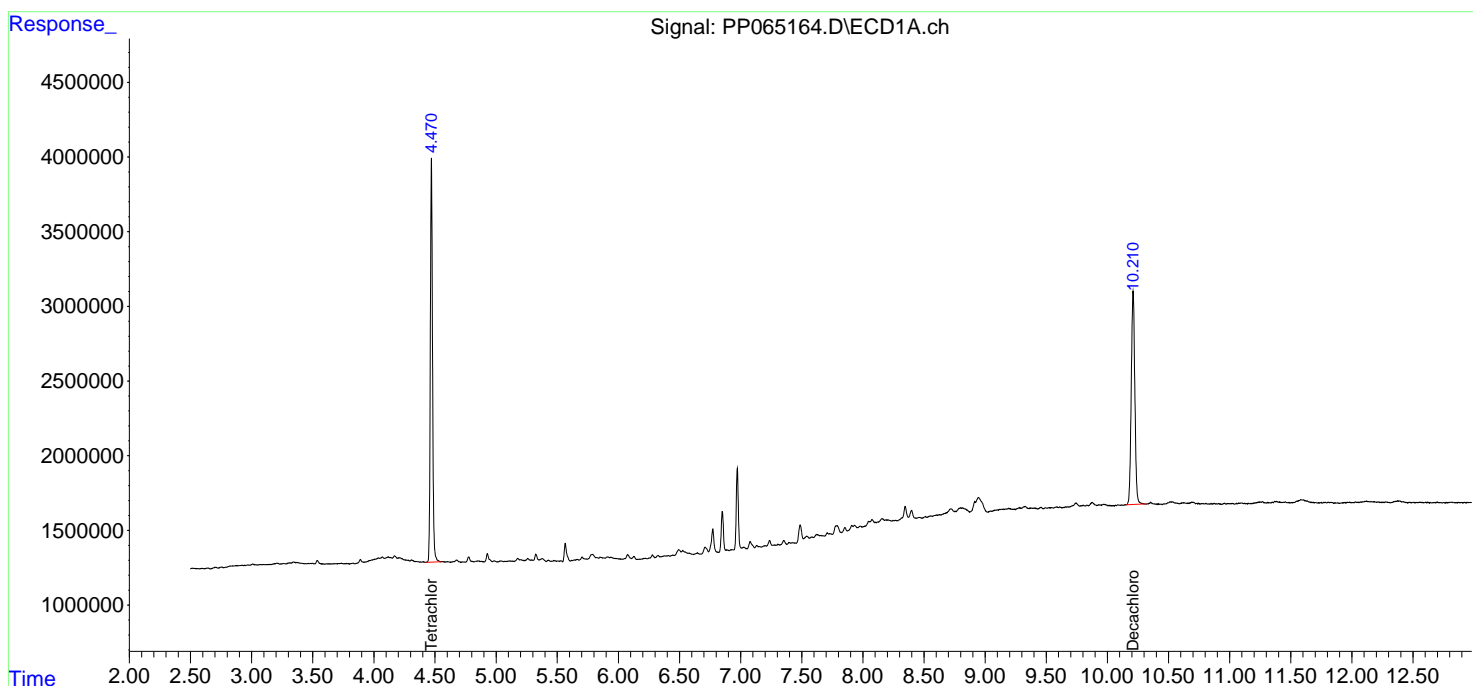
Instrument :
 ECD_P
ClientSampleId :
 HD-01-05212024

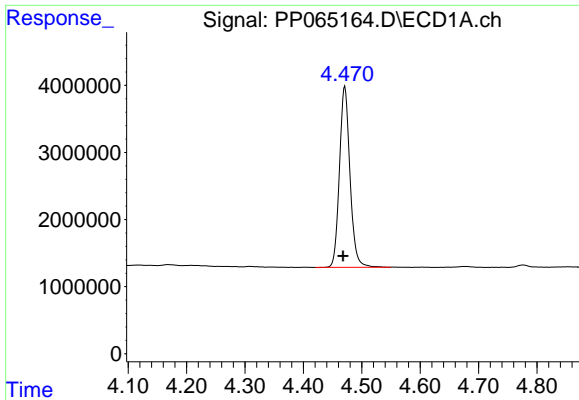
Manual Integrations
APPROVED

Reviewed By :Yogesh Patel 05/23/2024
 Supervised By :Ankita Jodhani 05/23/2024

Integration File signal 1: autoint1.e
 Integration File signal 2: autoint2.e
 Quant Time: May 23 02:03:52 2024
 Quant Method : Z:\pestpcbsrv\HPCHEM1\ECD_P\methods\PP052124.M
 Quant Title : GC EXTRACTABLES
 QLast Update : Tue May 21 18:19:41 2024
 Response via : Initial Calibration
 Integrator: ChemStation

Volume Inj. : 2 µl
 Signal #1 Phase : ZB-MR1 Signal #2 Phase: ZB-MR2
 Signal #1 Info : 30Mx0.32mmx 0.50µm Signal #2 Info : 30M x 0.32mm x 0.25µm



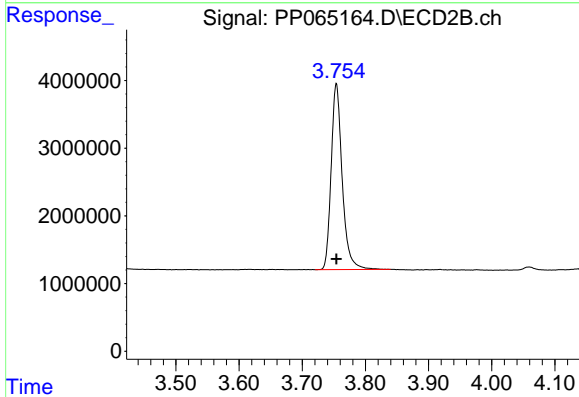


#1 Tetrachloro-m-xylene
 R.T.: 4.471 min
 Delta R.T.: 0.003 min
 Response: 33775206
 Conc: 21.40 ng/ml

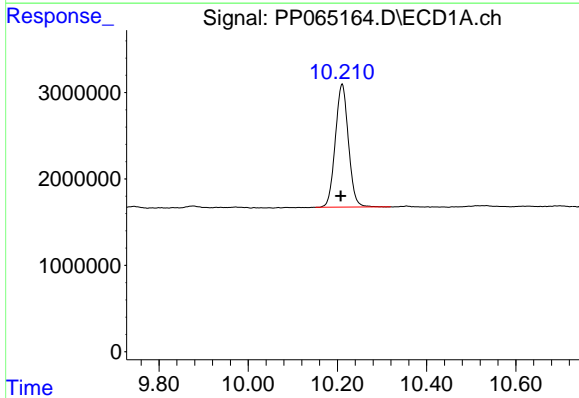
Instrument :
 ECD_P
 Client Sample Id :
 HD-01-05212024

Manual Integrations
 APPROVED

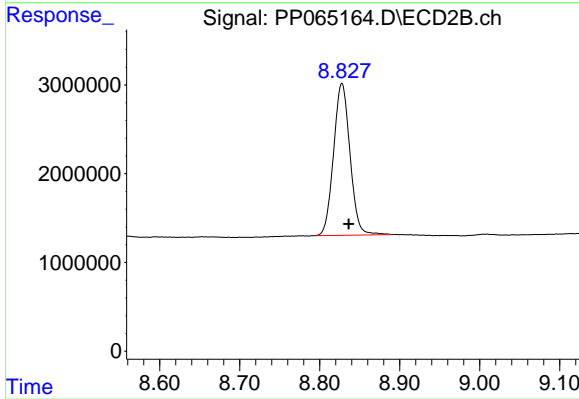
Reviewed By :Yogesh Patel 05/23/2024
 Supervised By :Ankita Jodhani 05/23/2024



#1 Tetrachloro-m-xylene
 R.T.: 3.754 min
 Delta R.T.: 0.000 min
 Response: 33435909
 Conc: 22.02 ng/ml



#2 Decachlorobiphenyl
 R.T.: 10.211 min
 Delta R.T.: 0.003 min
 Response: 29037849
 Conc: 22.33 ng/ml



#2 Decachlorobiphenyl
 R.T.: 8.827 min
 Delta R.T.: -0.009 min
 Response: 24453089
 Conc: 18.55 ng/ml m