

Data Path : Z:\pestpcbsrv\HPCHEM1\ECD\_P\Data\PP052225\  
 Data File : PP072301.D  
 Signal(s) : Signal #1: ECD1A.ch Signal #2: ECD2B.ch  
 Acq On : 22 May 2025 15:49  
 Operator : YP\AJ  
 Sample : AR1660CCC500  
 Misc :  
 ALS Vial : 3 Sample Multiplier: 1

Instrument :  
 ECD\_P  
 ClientSampleId :  
 AR1660CCC500

Integration File signal 1: autoint1.e  
 Integration File signal 2: autoint2.e  
 Quant Time: May 22 22:38:17 2025  
 Quant Method : Z:\pestpcbsrv\HPCHEM1\ECD\_P\methods\PP051925.M  
 Quant Title : GC EXTRACTABLES  
 QLast Update : Tue May 20 03:29:33 2025  
 Response via : Initial Calibration  
 Integrator: ChemStation

Volume Inj. : 2 µl  
 Signal #1 Phase : ZB-MR1 Signal #2 Phase: ZB-MR2  
 Signal #1 Info : 30Mx0.32mmx 0.50µ Signal #2 Info : 30M x 0.32mm x 0.25µm

Compound	RT#1	RT#2	Resp#1	Resp#2	ng/ml	ng/ml
-----						
System Monitoring Compounds						
1) SA Tetrachlo...	4.504	3.796	106.8E6	86985350	53.119	54.422
2) SA Decachlor...	10.213	8.819	88039954	60518238	54.041	57.168
Target Compounds						
3) L1 AR-1016-1	5.657	4.879	36712504	32494357	488.955	528.970
4) L1 AR-1016-2	5.678	4.897	55497488	47486256	518.708	540.911
5) L1 AR-1016-3	5.740	5.075	33651702	26255842	513.258	550.963
6) L1 AR-1016-4	5.838	5.117	28113346	21012409	527.752	552.299
7) L1 AR-1016-5	6.131	5.331	25732602	28367424	526.130	569.348
31) L7 AR-1260-1	7.249	6.364	49127220	43788750	524.893	549.050
32) L7 AR-1260-2	7.502	6.552	72790883	52590051	507.290	518.526
33) L7 AR-1260-3	7.861	6.705	60354979	48130995	530.030	553.851
34) L7 AR-1260-4	8.086	7.176	57521962	39604891	536.072	549.374
35) L7 AR-1260-5	8.405	7.418	127.4E6	95321192	538.409	549.009

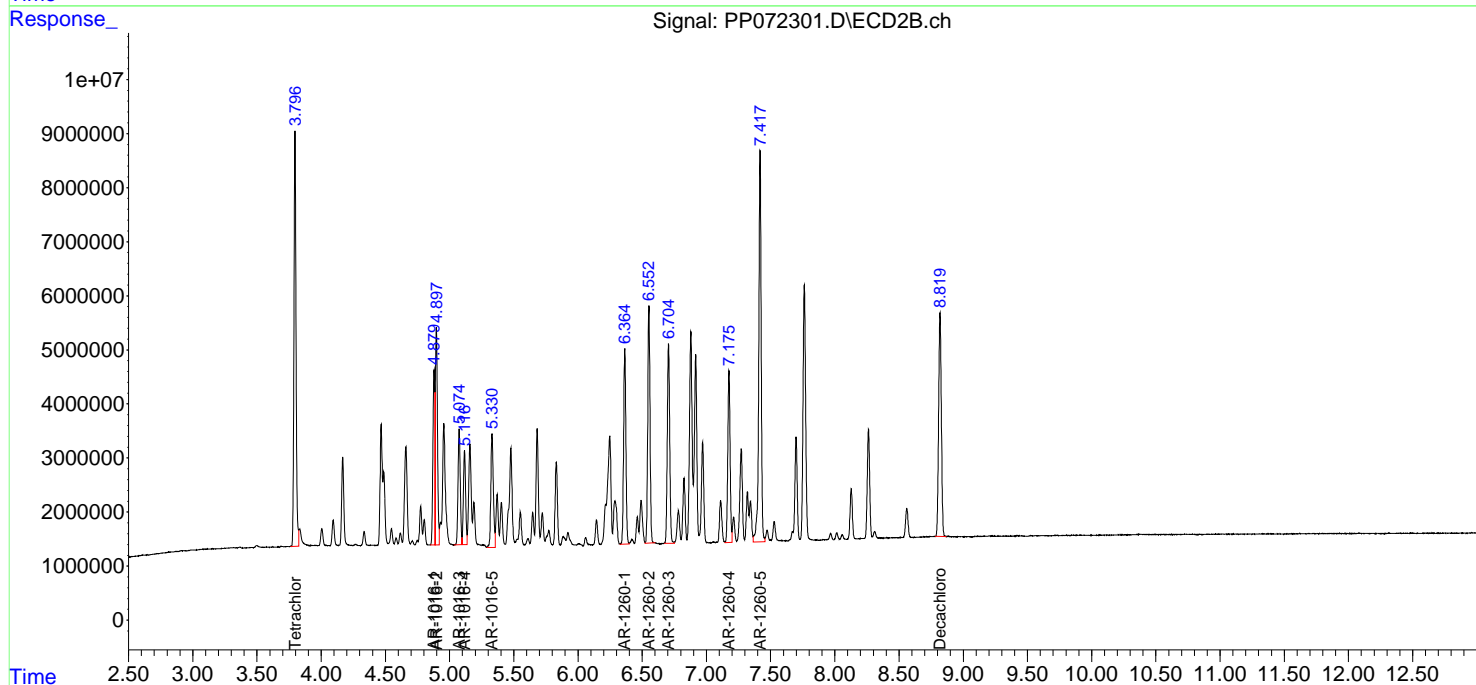
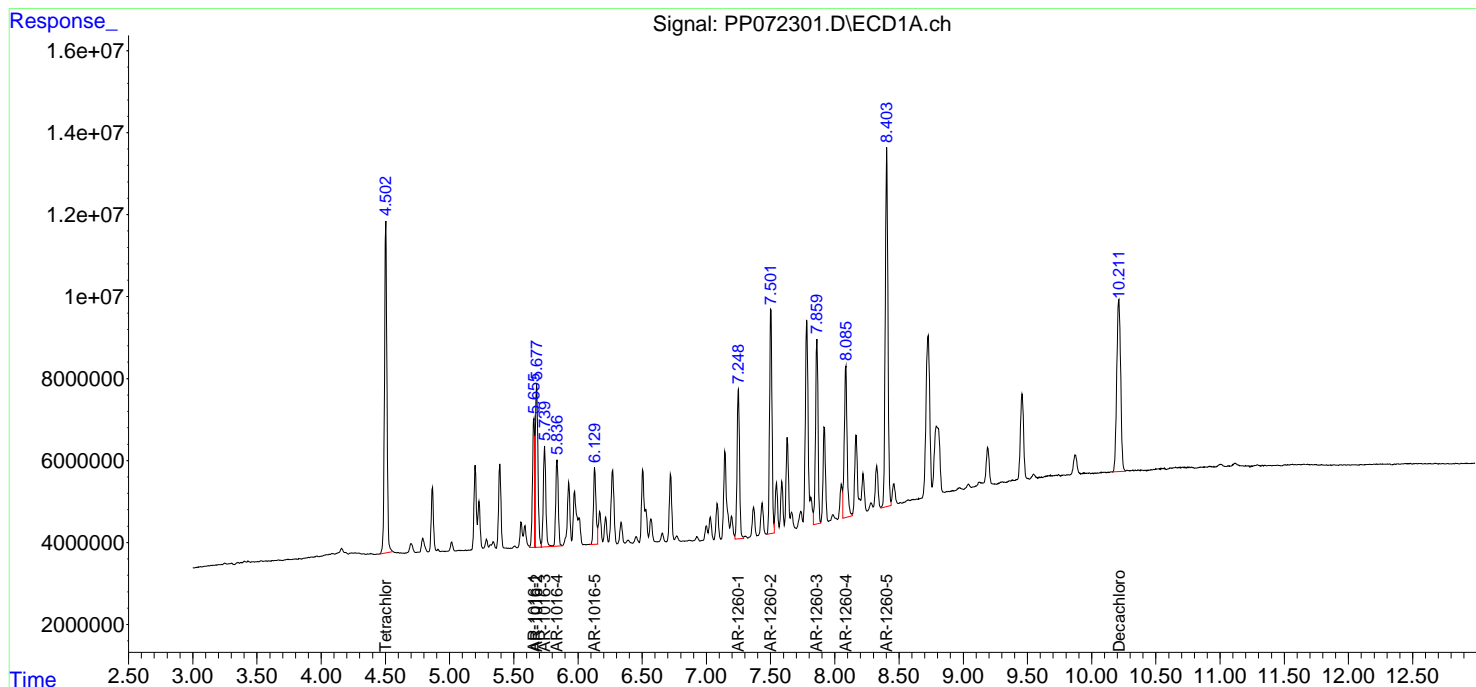
(f)=RT Delta > 1/2 Window (#)=Amounts differ by > 25% (m)=manual int.

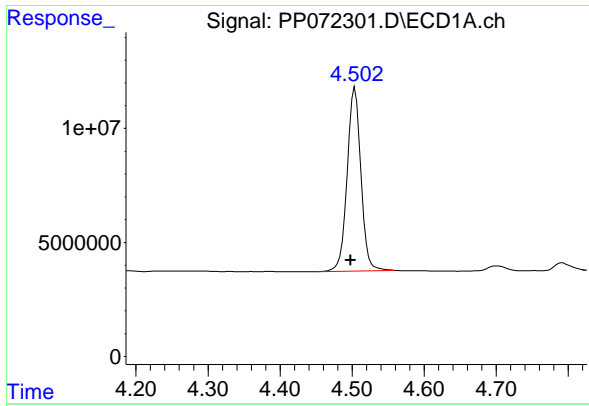
Data Path : Z:\pestpcbsrv\HPCHEM1\ECD\_P\Data\PP052225\  
Data File : PP072301.D  
Signal(s) : Signal #1: ECD1A.ch Signal #2: ECD2B.ch  
Acq On : 22 May 2025 15:49  
Operator : YP\AJ  
Sample : AR1660CCC500  
Misc :  
ALS Vial : 3 Sample Multiplier: 1

Instrument :  
ECD\_P  
ClientSampleId :  
AR1660CCC500

Integration File signal 1: autoint1.e  
Integration File signal 2: autoint2.e  
Quant Time: May 22 22:38:17 2025  
Quant Method : Z:\pestpcbsrv\HPCHEM1\ECD\_P\methods\PP051925.M  
Quant Title : GC EXTRACTABLES  
QLast Update : Tue May 20 03:29:33 2025  
Response via : Initial Calibration  
Integrator: ChemStation

Volume Inj. : 2 µl  
Signal #1 Phase : ZB-MR1 Signal #2 Phase: ZB-MR2  
Signal #1 Info : 30Mx0.32mmx 0.50µm Signal #2 Info : 30M x 0.32mm x 0.25µm

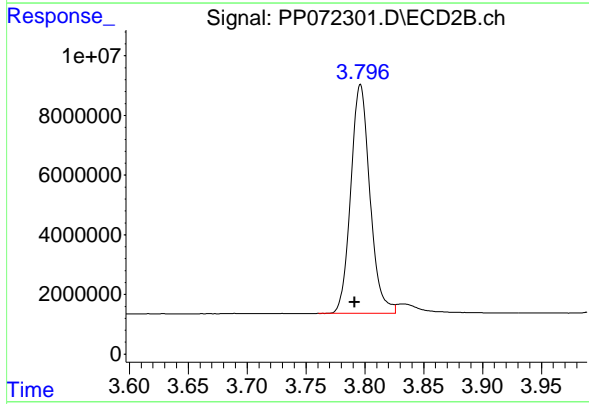




#1 Tetrachloro-m-xylene

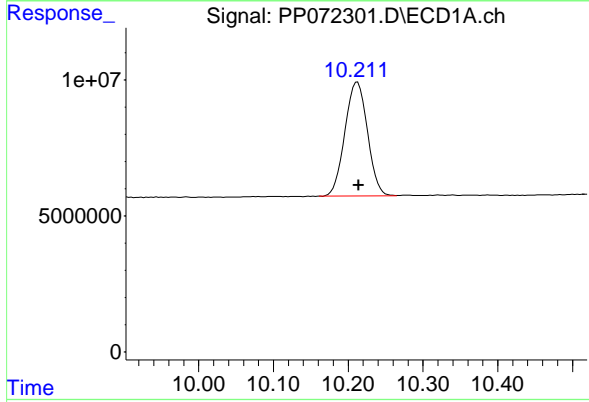
R.T.: 4.504 min  
 Delta R.T.: 0.006 min  
 Response: 106812494  
 Conc: 53.12 ng/ml

Instrument :  
 ECD\_P  
 ClientSampleId :  
 AR1660CCC500



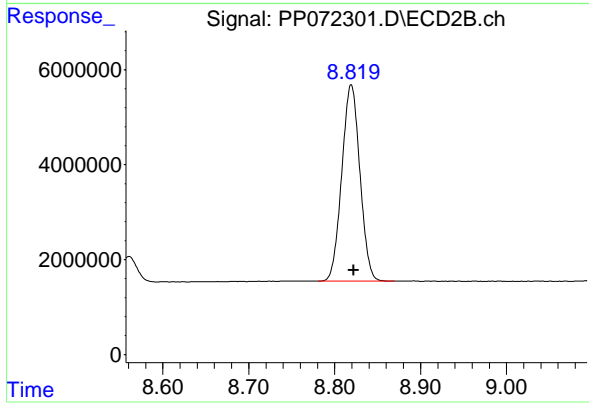
#1 Tetrachloro-m-xylene

R.T.: 3.796 min  
 Delta R.T.: 0.005 min  
 Response: 86985350  
 Conc: 54.42 ng/ml



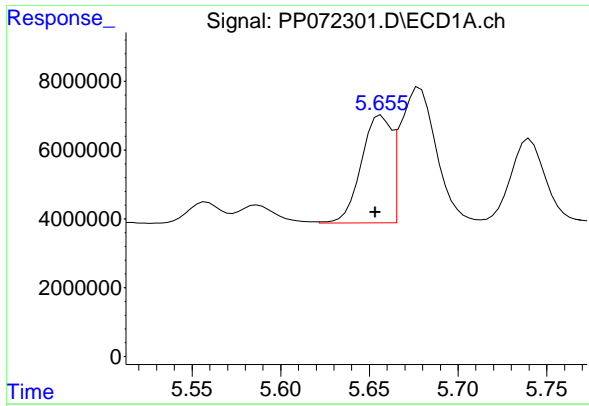
#2 Decachlorobiphenyl

R.T.: 10.213 min  
 Delta R.T.: -0.001 min  
 Response: 88039954  
 Conc: 54.04 ng/ml



#2 Decachlorobiphenyl

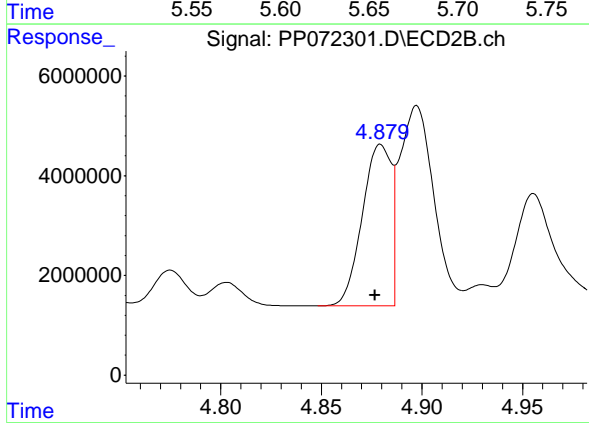
R.T.: 8.819 min  
 Delta R.T.: -0.003 min  
 Response: 60518238  
 Conc: 57.17 ng/ml



#3 AR-1016-1

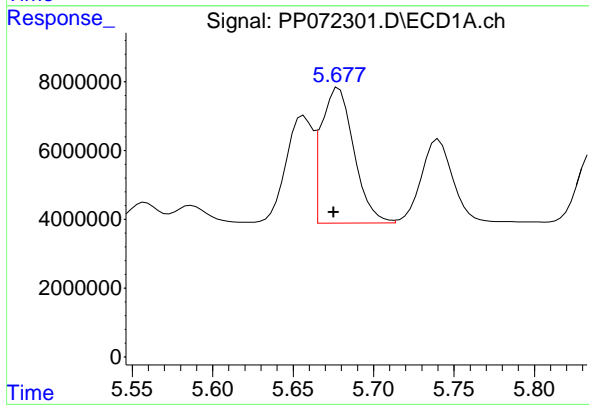
R.T.: 5.657 min  
 Delta R.T.: 0.003 min  
 Response: 36712504  
 Conc: 488.95 ng/ml

Instrument :  
 ECD\_P  
 ClientSampleId :  
 AR1660CCC500



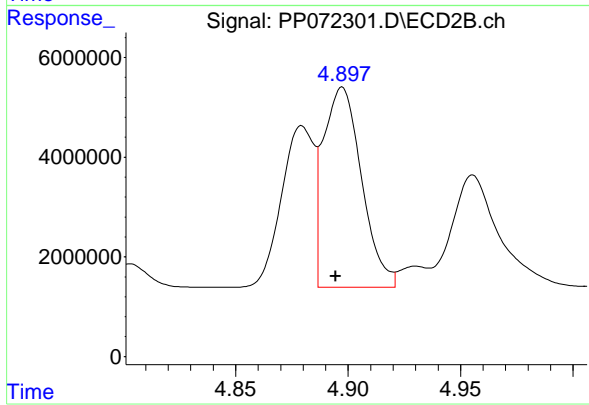
#3 AR-1016-1

R.T.: 4.879 min  
 Delta R.T.: 0.003 min  
 Response: 32494357  
 Conc: 528.97 ng/ml



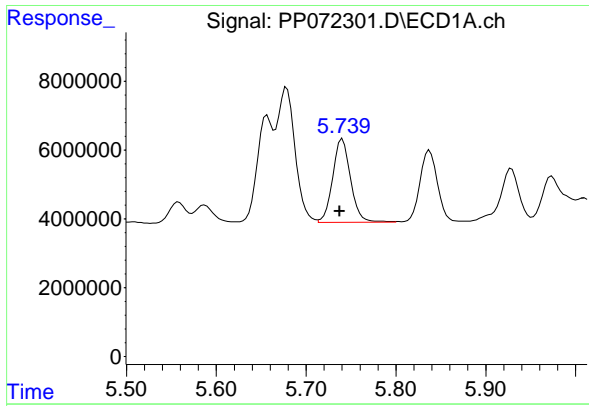
#4 AR-1016-2

R.T.: 5.678 min  
 Delta R.T.: 0.003 min  
 Response: 55497488  
 Conc: 518.71 ng/ml



#4 AR-1016-2

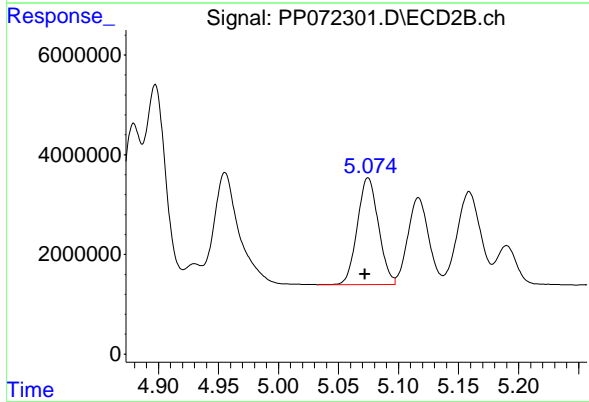
R.T.: 4.897 min  
 Delta R.T.: 0.003 min  
 Response: 47486256  
 Conc: 540.91 ng/ml



#5 AR-1016-3

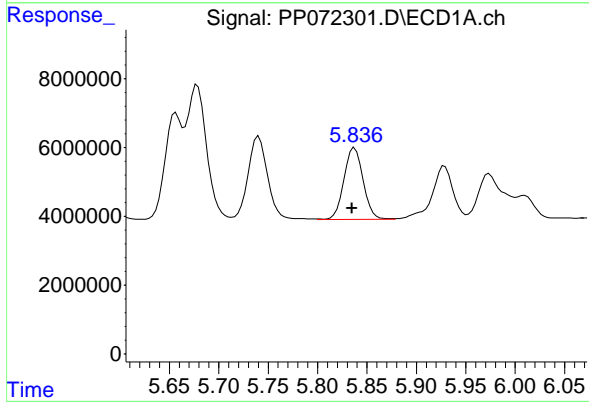
R.T.: 5.740 min  
 Delta R.T.: 0.003 min  
 Response: 33651702  
 Conc: 513.26 ng/ml

Instrument :  
 ECD\_P  
 ClientSampleId :  
 AR1660CCC500



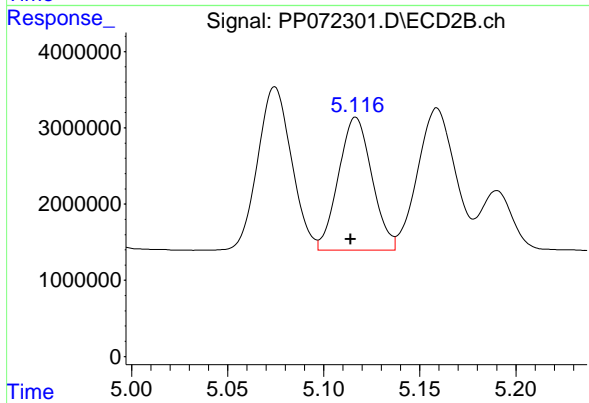
#5 AR-1016-3

R.T.: 5.075 min  
 Delta R.T.: 0.002 min  
 Response: 26255842  
 Conc: 550.96 ng/ml



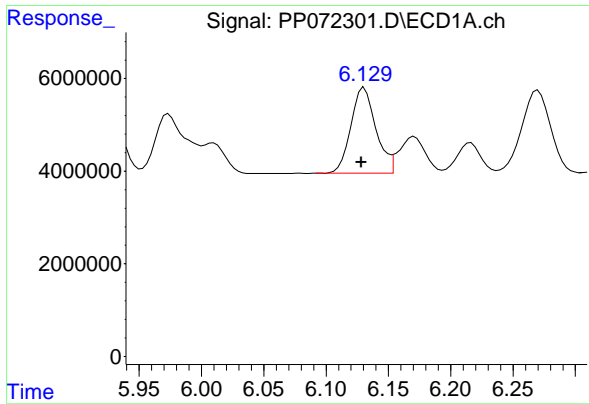
#6 AR-1016-4

R.T.: 5.838 min  
 Delta R.T.: 0.003 min  
 Response: 28113346  
 Conc: 527.75 ng/ml



#6 AR-1016-4

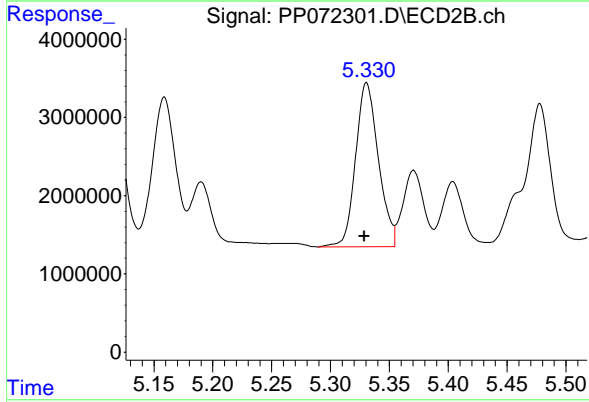
R.T.: 5.117 min  
 Delta R.T.: 0.003 min  
 Response: 21012409  
 Conc: 552.30 ng/ml



#7 AR-1016-5

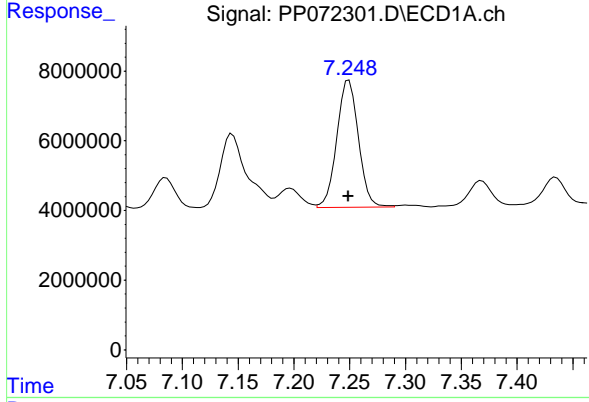
R.T.: 6.131 min  
 Delta R.T.: 0.002 min  
 Response: 25732602  
 Conc: 526.13 ng/ml

Instrument :  
 ECD\_P  
 ClientSampleId :  
 AR1660CCC500



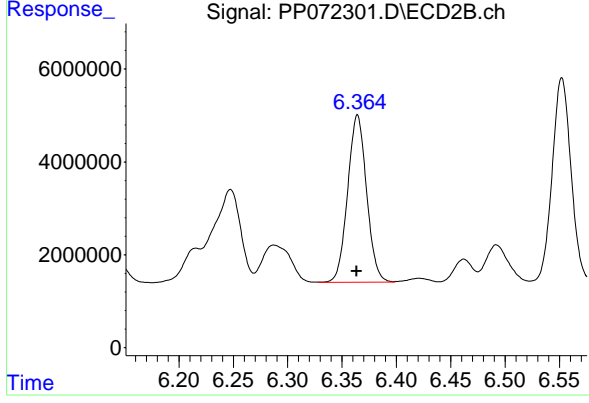
#7 AR-1016-5

R.T.: 5.331 min  
 Delta R.T.: 0.002 min  
 Response: 28367424  
 Conc: 569.35 ng/ml



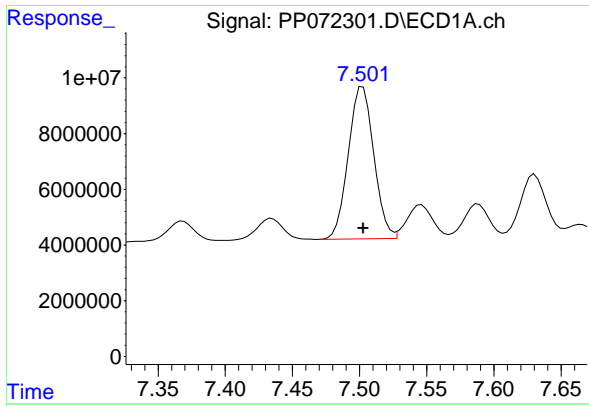
#31 AR-1260-1

R.T.: 7.249 min  
 Delta R.T.: 0.000 min  
 Response: 49127220  
 Conc: 524.89 ng/ml



#31 AR-1260-1

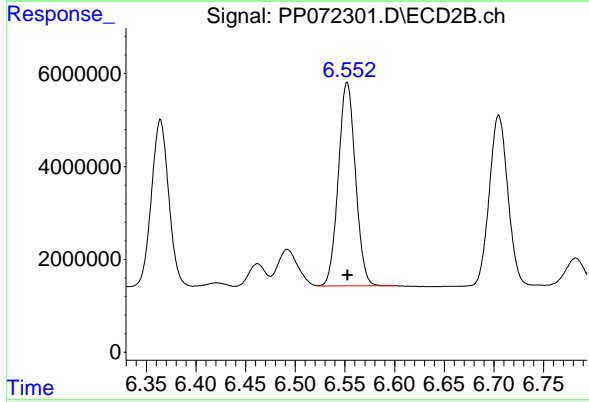
R.T.: 6.364 min  
 Delta R.T.: 0.000 min  
 Response: 43788750  
 Conc: 549.05 ng/ml



#32 AR-1260-2

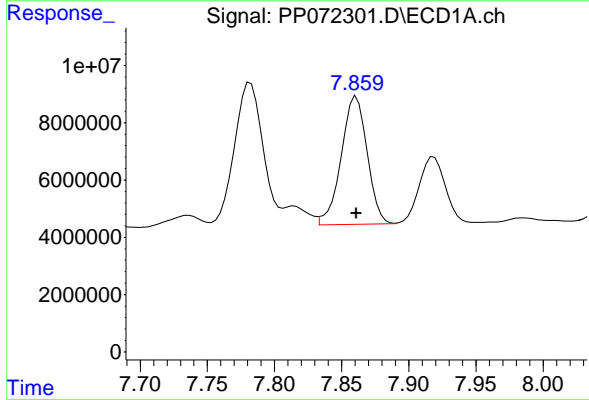
R.T.: 7.502 min  
 Delta R.T.: 0.000 min  
 Response: 72790883  
 Conc: 507.29 ng/ml

Instrument :  
 ECD\_P  
 ClientSampleId :  
 AR1660CCC500



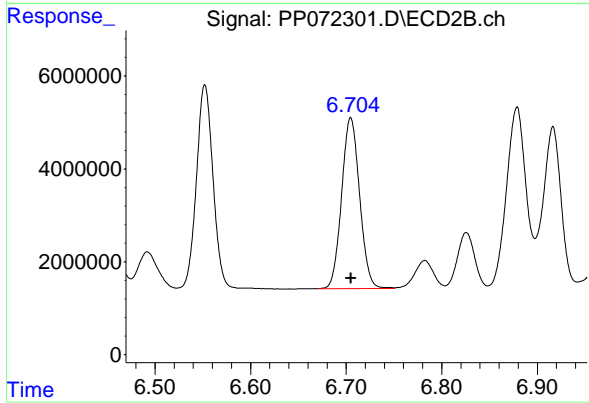
#32 AR-1260-2

R.T.: 6.552 min  
 Delta R.T.: 0.000 min  
 Response: 52590051  
 Conc: 518.53 ng/ml



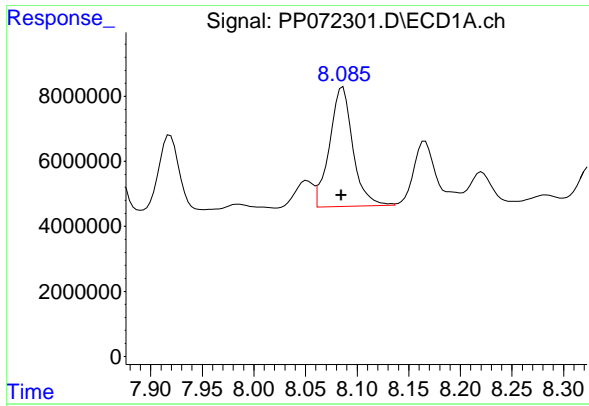
#33 AR-1260-3

R.T.: 7.861 min  
 Delta R.T.: 0.000 min  
 Response: 60354979  
 Conc: 530.03 ng/ml



#33 AR-1260-3

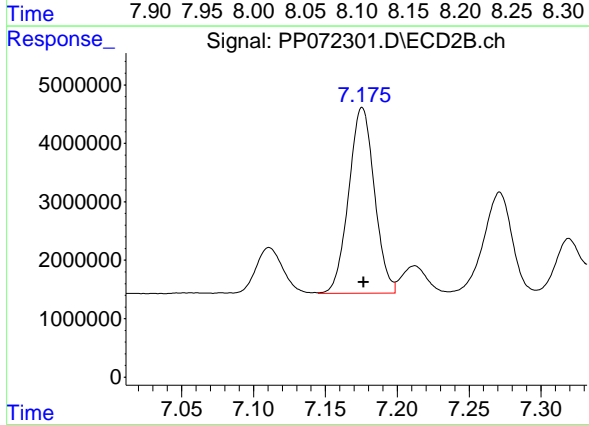
R.T.: 6.705 min  
 Delta R.T.: 0.000 min  
 Response: 48130995  
 Conc: 553.85 ng/ml



#34 AR-1260-4

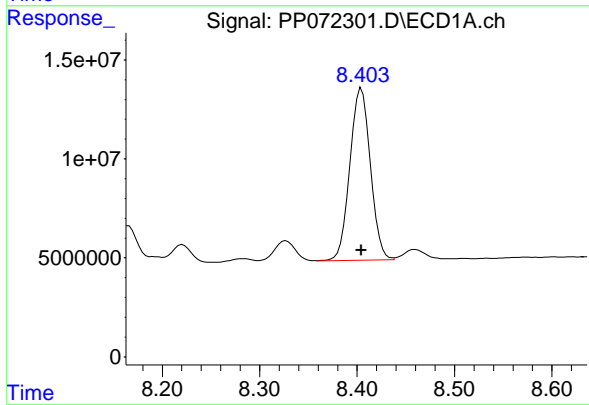
R.T.: 8.086 min  
 Delta R.T.: 0.001 min  
 Response: 57521962  
 Conc: 536.07 ng/ml

Instrument :  
 ECD\_P  
 Client Sample Id :  
 AR1660CCC500



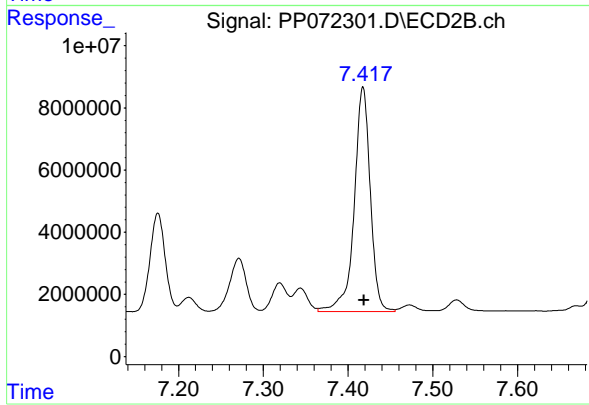
#34 AR-1260-4

R.T.: 7.176 min  
 Delta R.T.: 0.000 min  
 Response: 39604891  
 Conc: 549.37 ng/ml



#35 AR-1260-5

R.T.: 8.405 min  
 Delta R.T.: 0.000 min  
 Response: 127421100  
 Conc: 538.41 ng/ml



#35 AR-1260-5

R.T.: 7.418 min  
 Delta R.T.: 0.000 min  
 Response: 95321192  
 Conc: 549.01 ng/ml