

Data Path : Z:\pestpcbsrv\HPCHEM1\ECD_P\Data\PP052322\
 Data File : PP047937.D
 Signal(s) : Signal #1: ECD1A.ch Signal #2: ECD2B.ch
 Acq On : 24 May 2022 02:42
 Operator : YP\AJ
 Sample : N2894-16
 Misc :
 ALS Vial : 51 Sample Multiplier: 1

Instrument :
 ECD_P
 ClientSampleId :
 P008-SS002-0612-01

Integration File signal 1: autoint1.e
 Integration File signal 2: autoint2.e
 Quant Time: May 24 07:31:05 2022
 Quant Method : Z:\pestpcbsrv\HPCHEM1\ECD_P\methods\PP051022.M
 Quant Title : GC EXTRACTABLES
 QLast Update : Mon May 23 09:44:20 2022
 Response via : Initial Calibration
 Integrator: ChemStation

Volume Inj. : 2 µl
 Signal #1 Phase : ZB-MR2 Signal #2 Phase: ZB-MR2
 Signal #1 Info : 30Mx0.32mmx 0.50µ Signal #2 Info : 30M x 0.32mm x 0.25µm

Compound	RT#1	RT#2	Resp#1	Resp#2	ng/ml	ng/ml
System Monitoring Compounds						
1) SA Tetrachlo...	3.839	3.108	60998743	76408256	23.060	21.666
2) SA Decachlor...	9.885	8.399	26283738	48833281	17.354	16.756
Target Compounds						
3) L1 AR-1016-1	5.084	4.252	122954	645345	1.669	5.531 #
4) L1 AR-1016-2	5.108	4.252	253208	645345	2.268	3.723 #
5) L1 AR-1016-3	5.193	4.430f	61888	606492	0.902	6.703 #
6) L1 AR-1016-4	5.289	4.483	91918	158843	1.573	2.175 #
7) L1 AR-1016-5	5.619	4.703	204188	147745	3.741	1.572 #
8) L2 AR-1221-1	4.061	3.328	1577847	103333	3066.263	178.363 #
9) L2 AR-1221-2	4.179	3.400f	159125	3583845	39.164	531.448 #
10) L2 AR-1221-3	4.260	3.497	115797	506565	45.029	184.569 #
11) L3 AR-1232-1	4.260	3.497	115797	506565	45.029	184.569 #
12) L3 AR-1232-2	4.804	4.252	134946	645345	38.189	119.437 #
13) L3 AR-1232-3	5.108	4.430f	253208	606492	68.473	177.125 #
14) L3 AR-1232-4	5.289	4.538	91918	283786	30.643	98.968 #
15) L3 AR-1232-5	5.392	4.703	177467	147745	53.860	37.231 #
16) L4 AR-1242-1	5.084	4.252	122954	645345	52.107	184.856 #
17) L4 AR-1242-2	5.108	4.252	253208	645345	68.473	119.437 #
18) L4 AR-1242-3	5.193	4.430f	61888	606492	19.315	177.125 #
19) L4 AR-1242-4	5.289	4.538	91918	283786	30.643	98.968 #
20) L4 AR-1242-5	6.086	5.074	171110	498475	74.320	20.193 #
21) L5 AR-1248-1	5.084	4.252	122954	645345	52.107	184.856 #
22) L5 AR-1248-2	5.392	4.483	177467	158843	53.860	39.211 #
23) L5 AR-1248-3	5.619	4.538	204188	283786	89.961	98.968
24) L5 AR-1248-4	6.041	4.703	528477	147745	329.452	37.231 #
25) L5 AR-1248-5	6.086	5.124	171110	197752	74.320	66.961
26) L6 AR-1254-1	6.022	5.103	877271	130447	11.215	0.699 #
27) L6 AR-1254-2	6.241	5.235	662260	1148593	5.446	6.970 #
28) L6 AR-1254-3	6.635f	5.676	533579	2599543	4.067	10.148 #
29) L6 AR-1254-4	6.965	5.941	66457	1863255	0.698	10.176 #
30) L6 AR-1254-5	7.404f	6.355f	7253656	10548592	74.357	43.938 #
31) L7 AR-1260-1	6.809	5.800	1111494	2073224	12.287	12.170
32) L7 AR-1260-2	7.093	6.006	3358528	7156001	28.928	29.503
33) L7 AR-1260-3	7.488	6.166	7127047	4245996	69.152	21.247 #
34) L7 AR-1260-4	7.734	6.673	6081634	7136211	62.936	40.388 #
35) L7 AR-1260-5	8.072	6.942	13221473	22638336	73.911	48.125 #
36) L8 AR-1262-1	7.488f	6.396f	7127047	12919606	46.825	39.713
37) L8 AR-1262-2	8.072f	6.673f	13221473	7136211	61.987	29.204 #
38) L8 AR-1262-3	8.410	7.279f	8460228	85644	59.948	0.398 #
39) L8 AR-1262-4	8.488f	7.314f	3209325	15574132	53.317	43.126
40) L8 AR-1262-5	9.201f	7.857f	863692	13887526	12.134	80.666 #
41) L9 AR-1268-1	8.410	7.279f	8460228	85644	59.948	0.398 #

Data Path : Z:\pestpcbsrv\HPCHEM1\ECD_P\Data\PP052322\
 Data File : PP047937.D
 Signal(s) : Signal #1: ECD1A.ch Signal #2: ECD2B.ch
 Acq On : 24 May 2022 02:42
 Operator : YP\AJ
 Sample : N2894-16
 Misc :
 ALS Vial : 51 Sample Multiplier: 1

Instrument :
 ECD_P
 ClientSampleId :
 P008-SS002-0612-01

Integration File signal 1: autoint1.e
 Integration File signal 2: autoint2.e
 Quant Time: May 24 07:31:05 2022
 Quant Method : Z:\pestpcbsrv\HPCHEM1\ECD_P\methods\PP051022.M
 Quant Title : GC EXTRACTABLES
 QLast Update : Mon May 23 09:44:20 2022
 Response via : Initial Calibration
 Integrator: ChemStation

Volume Inj. : 2 µl
 Signal #1 Phase : ZB-MR1 Signal #2 Phase: ZB-MR2
 Signal #1 Info : 30Mx0.32mmx 0.50µ Signal #2 Info : 30M x 0.32mm x 0.25µm

	Compound	RT#1	RT#2	Resp#1	Resp#2	ng/ml	ng/ml
42)	L9 AR-1268-2	8.488f	7.314f	3209325	15574132	28.793	43.126 #
43)	L9 AR-1268-3	8.750	7.530f	630163	760276	94.862	40.989 #
44)	L9 AR-1268-4	9.201f	7.857f	863692	13887526	12.134	80.666 #
45)	L9 AR-1268-5	9.595	8.151f	299311	7323293	11.194	122.152 #

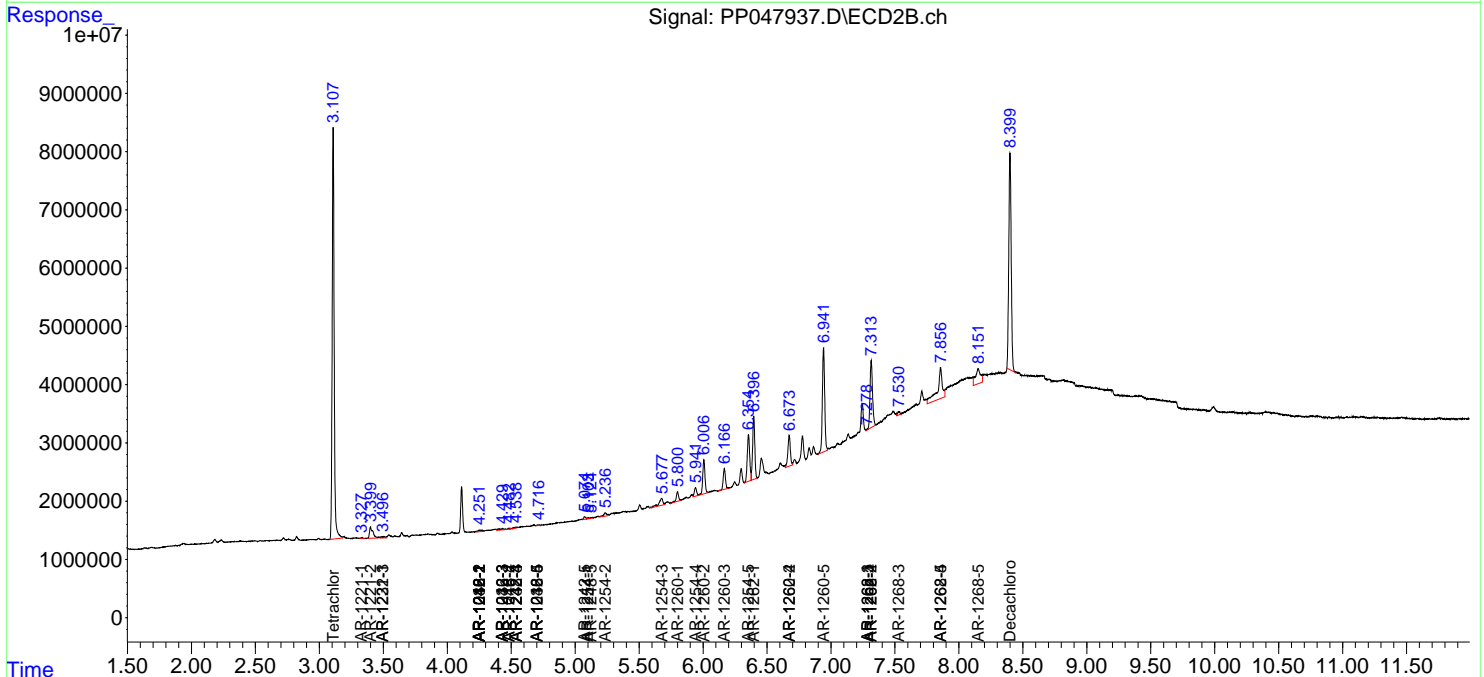
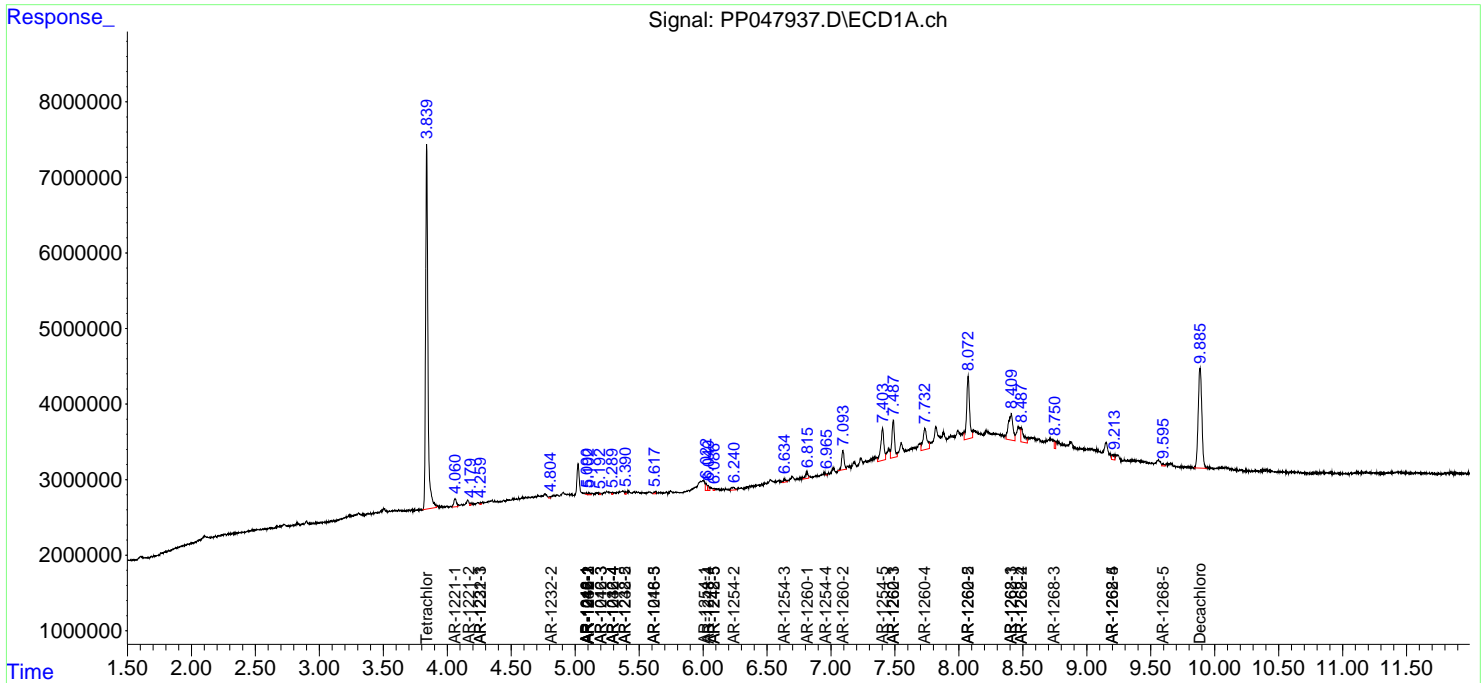
(f)=RT Delta > 1/2 Window (#)=Amounts differ by > 25% (m)=manual int.

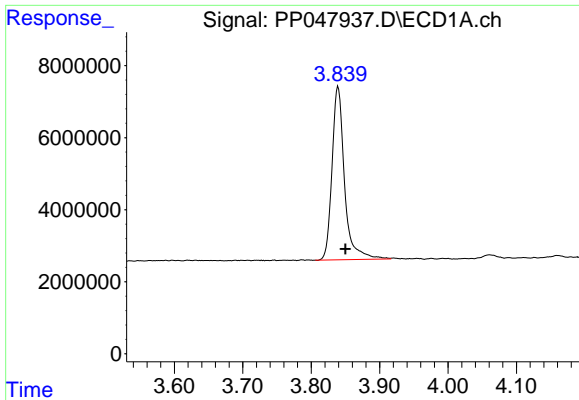
Data Path : Z:\pestpcbsrv\HPCHEM1\ECD_P\Data\PP052322\
 Data File : PP047937.D
 Signal(s) : Signal #1: ECD1A.ch Signal #2: ECD2B.ch
 Acq On : 24 May 2022 02:42
 Operator : YP\AJ
 Sample : N2894-16
 Misc :
 ALS Vial : 51 Sample Multiplier: 1

Instrument :
 ECD_P
 ClientSampleId :
 P008-SS002-0612-01

Integration File signal 1: autoint1.e
 Integration File signal 2: autoint2.e
 Quant Time: May 24 07:31:05 2022
 Quant Method : Z:\pestpcbsrv\HPCHEM1\ECD_P\methods\PP051022.M
 Quant Title : GC EXTRACTABLES
 QLast Update : Mon May 23 09:44:20 2022
 Response via : Initial Calibration
 Integrator: ChemStation

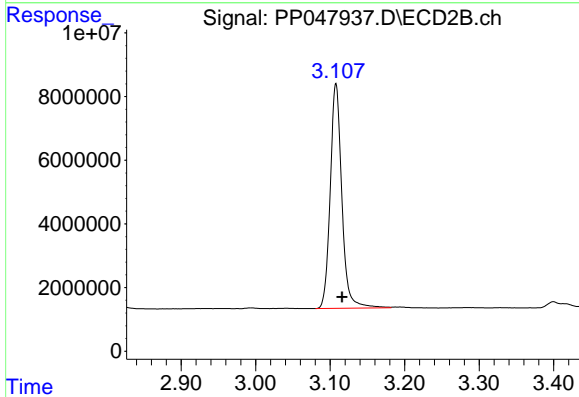
Volume Inj. : 2 µl
 Signal #1 Phase : ZB-MR1 Signal #2 Phase: ZB-MR2
 Signal #1 Info : 30Mx0.32mmx 0.50µ Signal #2 Info : 30M x 0.32mm x 0.25µm



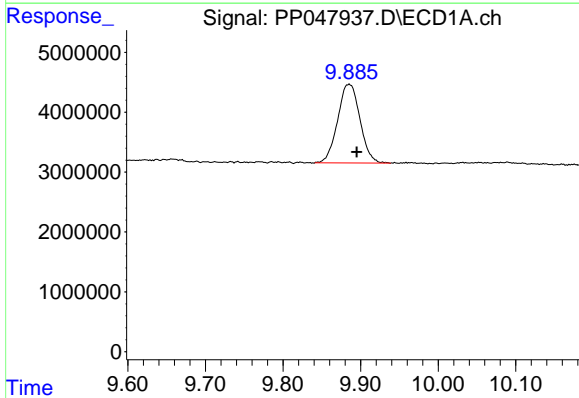


#1 Tetrachloro-m-xylene
 R.T.: 3.839 min
 Delta R.T.: -0.011 min
 Response: 60998743
 Conc: 23.06 ng/ml

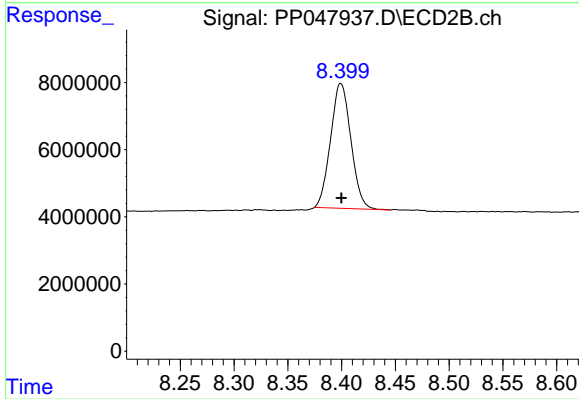
Instrument :
 ECD_P
 ClientSampleId :
 P008-SS002-0612-01



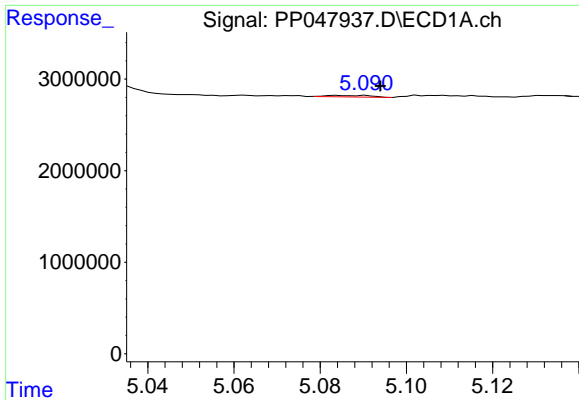
#1 Tetrachloro-m-xylene
 R.T.: 3.108 min
 Delta R.T.: -0.008 min
 Response: 76408256
 Conc: 21.67 ng/ml



#2 Decachlorobiphenyl
 R.T.: 9.885 min
 Delta R.T.: -0.010 min
 Response: 26283738
 Conc: 17.35 ng/ml



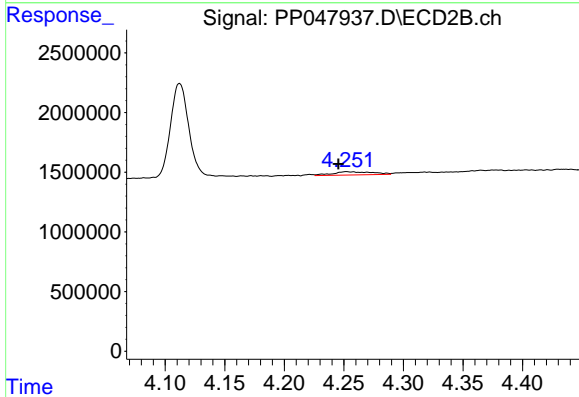
#2 Decachlorobiphenyl
 R.T.: 8.399 min
 Delta R.T.: 0.000 min
 Response: 48833281
 Conc: 16.76 ng/ml



#3 AR-1016-1

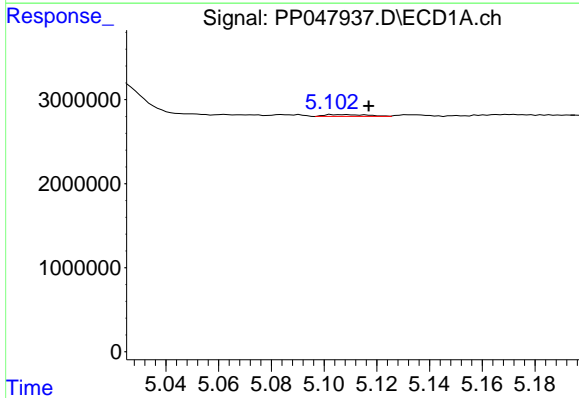
R.T.: 5.084 min
 Delta R.T.: -0.010 min
 Response: 122954
 Conc: 1.67 ng/ml

Instrument :
 ECD_P
 ClientSampleId :
 P008-SS002-0612-01



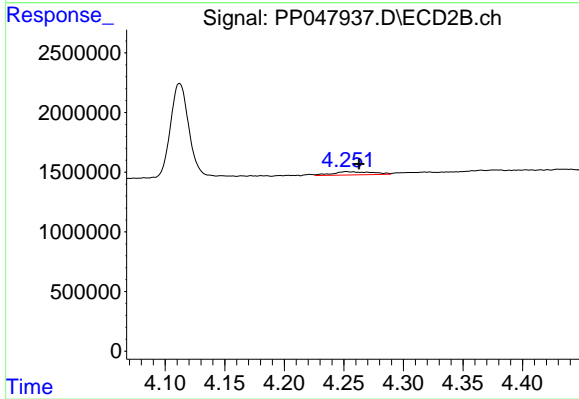
#3 AR-1016-1

R.T.: 4.252 min
 Delta R.T.: 0.007 min
 Response: 645345
 Conc: 5.53 ng/ml



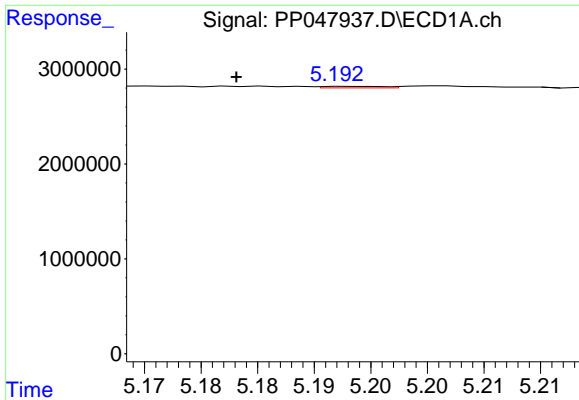
#4 AR-1016-2

R.T.: 5.108 min
 Delta R.T.: -0.009 min
 Response: 253208
 Conc: 2.27 ng/ml



#4 AR-1016-2

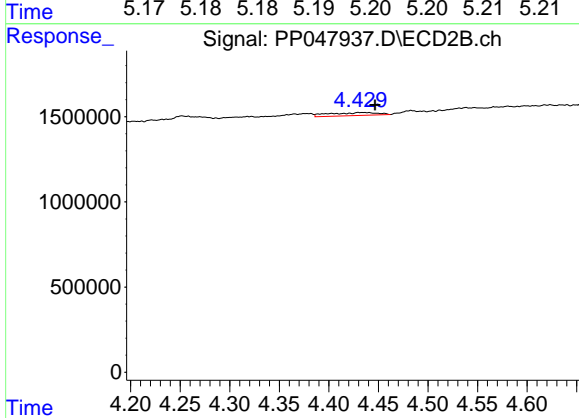
R.T.: 4.252 min
 Delta R.T.: -0.011 min
 Response: 645345
 Conc: 3.72 ng/ml



#5 AR-1016-3

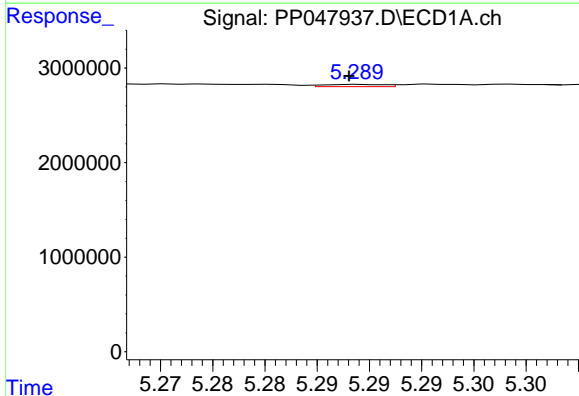
R.T.: 5.193 min
 Delta R.T.: 0.010 min
 Response: 61888
 Conc: 0.90 ng/ml

Instrument :
 ECD_P
 ClientSampleId :
 P008-SS002-0612-01



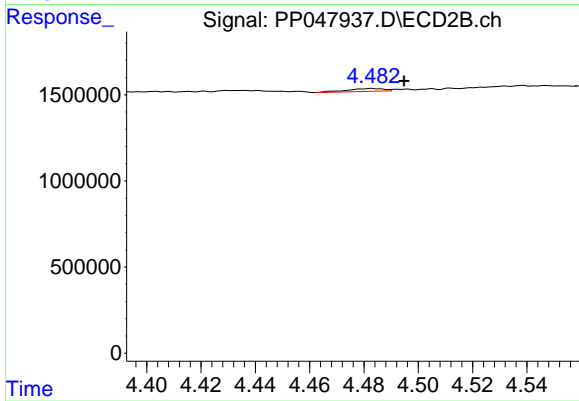
#5 AR-1016-3

R.T.: 4.430 min
 Delta R.T.: -0.016 min
 Response: 606492
 Conc: 6.70 ng/ml



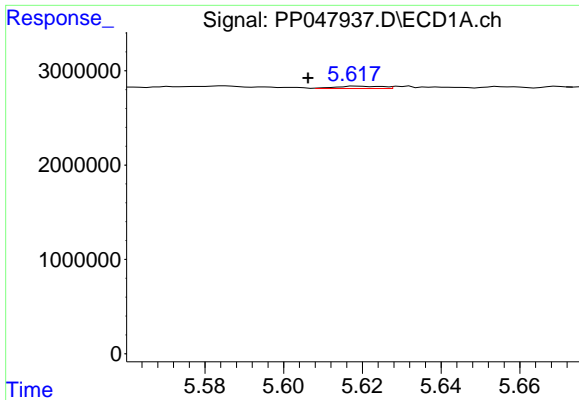
#6 AR-1016-4

R.T.: 5.289 min
 Delta R.T.: 0.001 min
 Response: 91918
 Conc: 1.57 ng/ml



#6 AR-1016-4

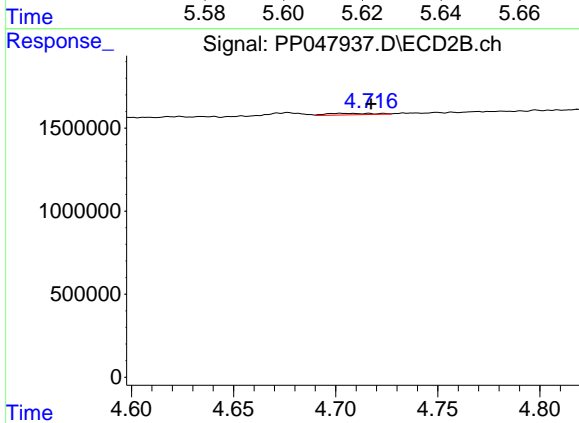
R.T.: 4.483 min
 Delta R.T.: -0.012 min
 Response: 158843
 Conc: 2.18 ng/ml



#7 AR-1016-5

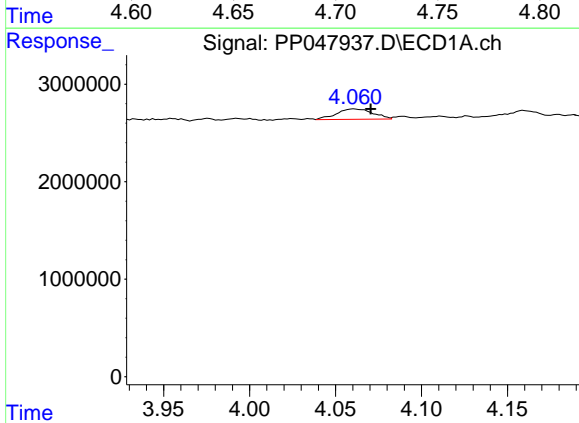
R.T.: 5.619 min
 Delta R.T.: 0.012 min
 Response: 204188
 Conc: 3.74 ng/ml

Instrument :
 ECD_P
 ClientSampleId :
 P008-SS002-0612-01



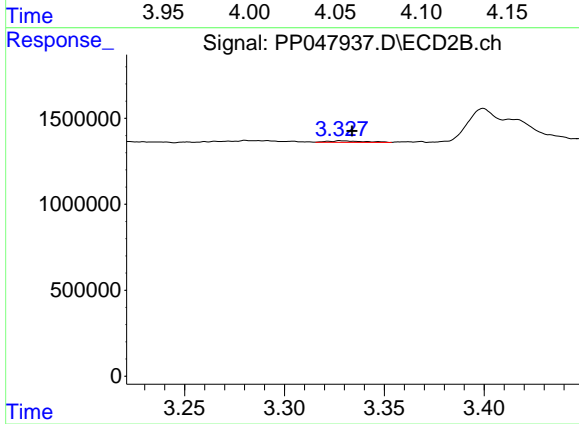
#7 AR-1016-5

R.T.: 4.703 min
 Delta R.T.: -0.015 min
 Response: 147745
 Conc: 1.57 ng/ml



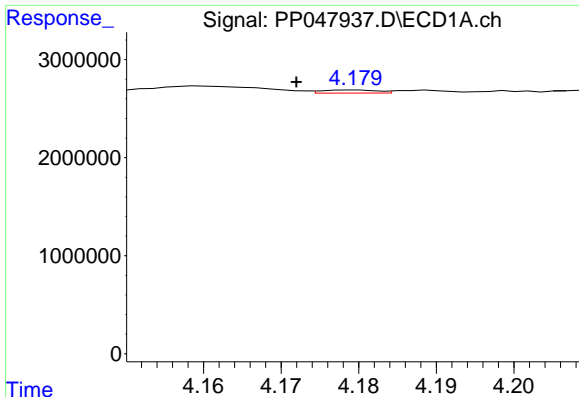
#8 AR-1221-1

R.T.: 4.061 min
 Delta R.T.: -0.010 min
 Response: 1577847
 Conc: 3066.26 ng/ml



#8 AR-1221-1

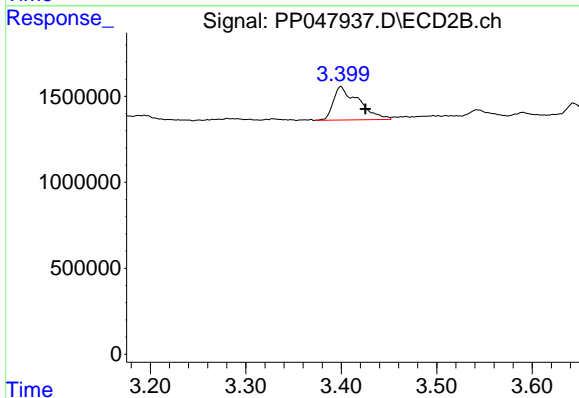
R.T.: 3.328 min
 Delta R.T.: -0.006 min
 Response: 103333
 Conc: 178.36 ng/ml



#9 AR-1221-2

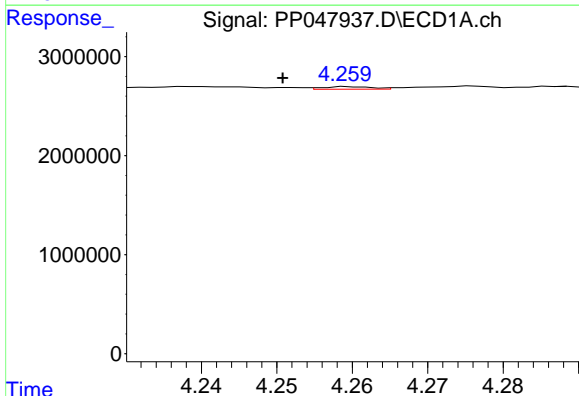
R.T.: 4.179 min
 Delta R.T.: 0.007 min
 Response: 159125
 Conc: 39.16 ng/ml

Instrument :
 ECD_P
 ClientSampleId :
 P008-SS002-0612-01



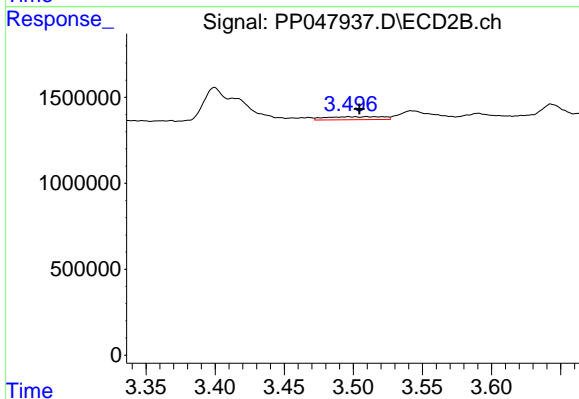
#9 AR-1221-2

R.T.: 3.400 min
 Delta R.T.: -0.026 min
 Response: 3583845
 Conc: 531.45 ng/ml



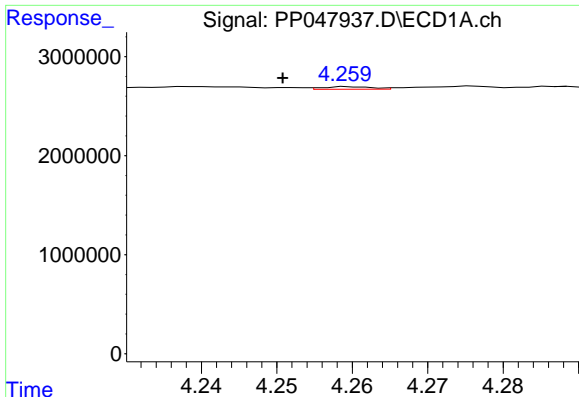
#10 AR-1221-3

R.T.: 4.260 min
 Delta R.T.: 0.009 min
 Response: 115797
 Conc: 45.03 ng/ml



#10 AR-1221-3

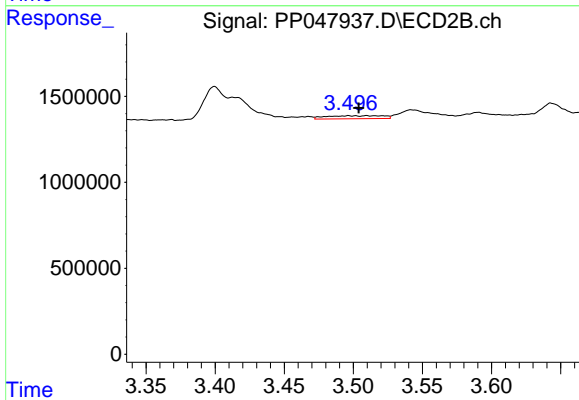
R.T.: 3.497 min
 Delta R.T.: -0.008 min
 Response: 506565
 Conc: 184.57 ng/ml



#11 AR-1232-1

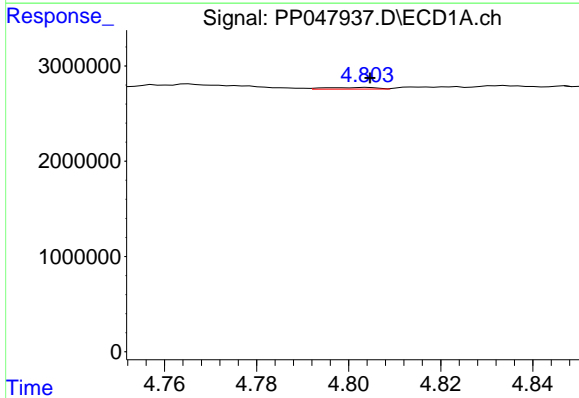
R.T.: 4.260 min
 Delta R.T.: 0.009 min
 Response: 115797
 Conc: 45.03 ng/ml

Instrument :
 ECD_P
 ClientSampleId :
 P008-SS002-0612-01



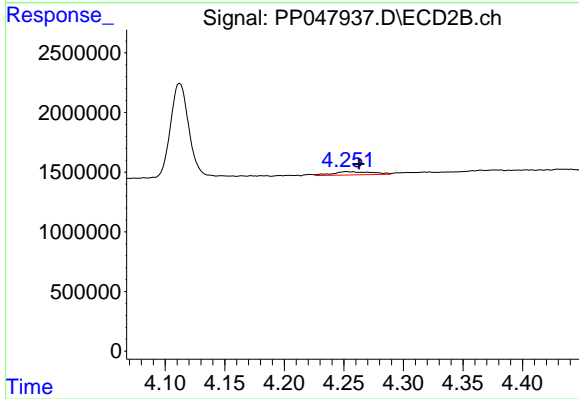
#11 AR-1232-1

R.T.: 3.497 min
 Delta R.T.: -0.007 min
 Response: 506565
 Conc: 184.57 ng/ml



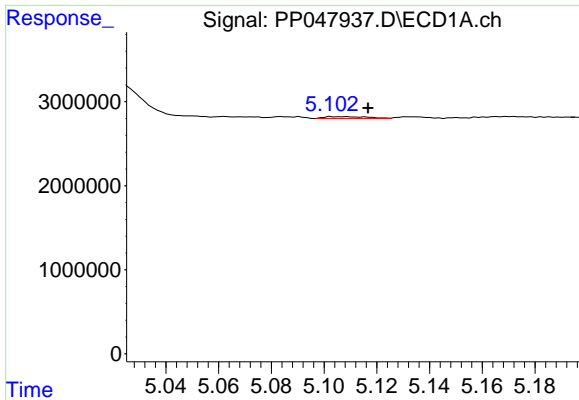
#12 AR-1232-2

R.T.: 4.804 min
 Delta R.T.: 0.000 min
 Response: 134946
 Conc: 38.19 ng/ml



#12 AR-1232-2

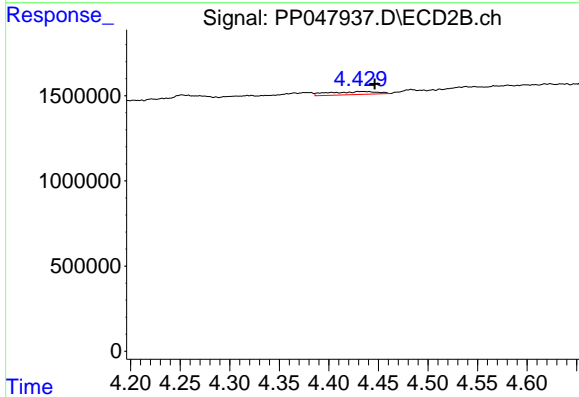
R.T.: 4.252 min
 Delta R.T.: -0.011 min
 Response: 645345
 Conc: 119.44 ng/ml



#13 AR-1232-3

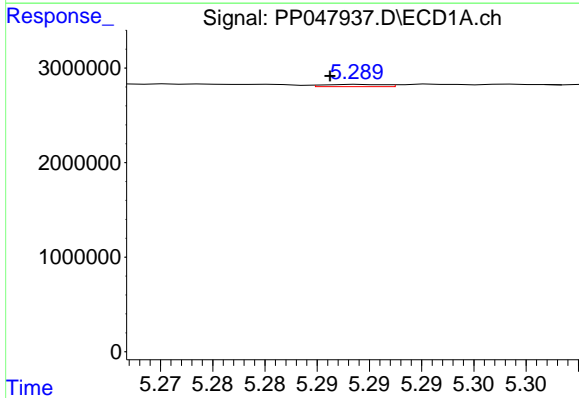
R.T.: 5.108 min
 Delta R.T.: -0.009 min
 Response: 253208
 Conc: 68.47 ng/ml

Instrument :
 ECD_P
 ClientSampleId :
 P008-SS002-0612-01



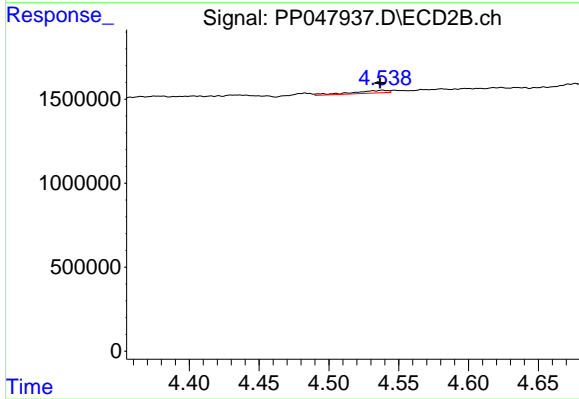
#13 AR-1232-3

R.T.: 4.430 min
 Delta R.T.: -0.016 min
 Response: 606492
 Conc: 177.13 ng/ml



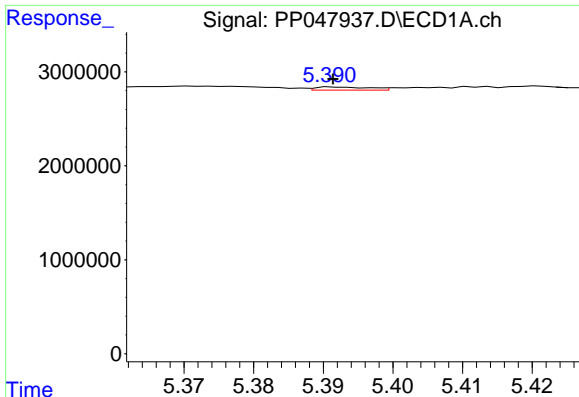
#14 AR-1232-4

R.T.: 5.289 min
 Delta R.T.: 0.003 min
 Response: 91918
 Conc: 30.64 ng/ml



#14 AR-1232-4

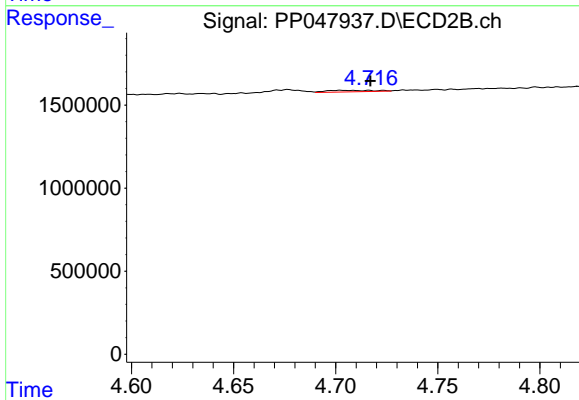
R.T.: 4.538 min
 Delta R.T.: 0.002 min
 Response: 283786
 Conc: 98.97 ng/ml



#15 AR-1232-5

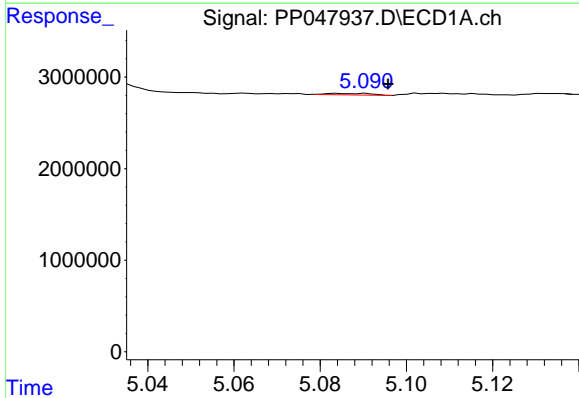
R.T.: 5.392 min
 Delta R.T.: 0.000 min
 Response: 177467
 Conc: 53.86 ng/ml

Instrument :
 ECD_P
 ClientSampleId :
 P008-SS002-0612-01



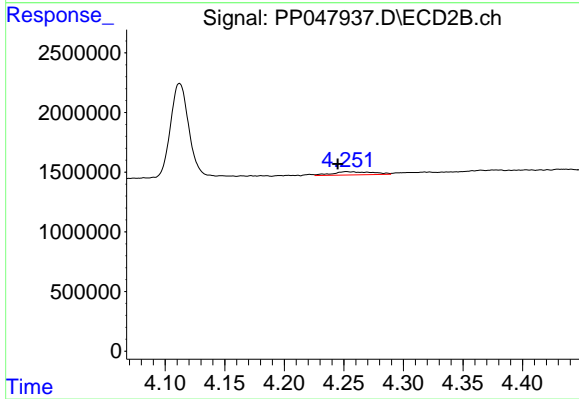
#15 AR-1232-5

R.T.: 4.703 min
 Delta R.T.: -0.014 min
 Response: 147745
 Conc: 37.23 ng/ml



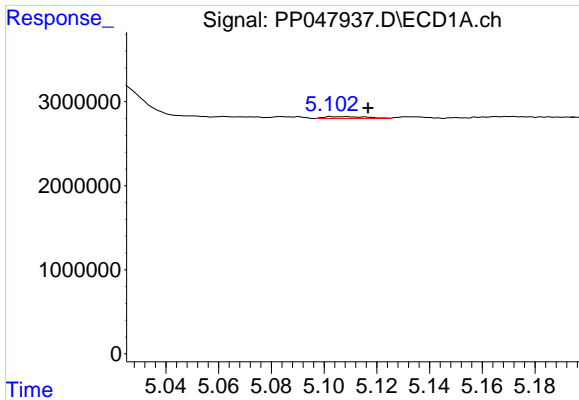
#16 AR-1242-1

R.T.: 5.084 min
 Delta R.T.: -0.012 min
 Response: 122954
 Conc: 52.11 ng/ml



#16 AR-1242-1

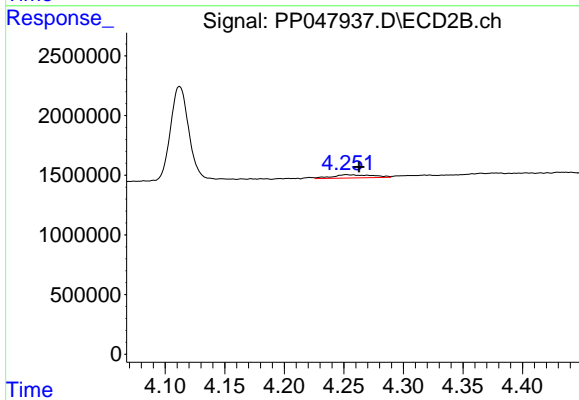
R.T.: 4.252 min
 Delta R.T.: 0.007 min
 Response: 645345
 Conc: 184.86 ng/ml



#17 AR-1242-2

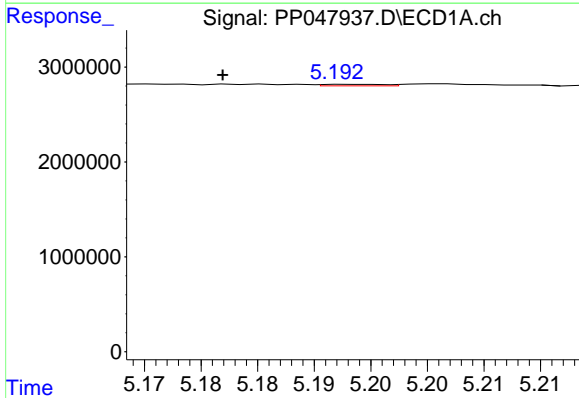
R.T.: 5.108 min
 Delta R.T.: -0.009 min
 Response: 253208
 Conc: 68.47 ng/ml

Instrument :
 ECD_P
 ClientSampleId :
 P008-SS002-0612-01



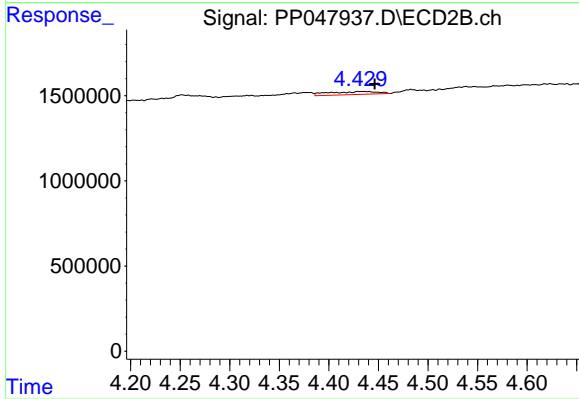
#17 AR-1242-2

R.T.: 4.252 min
 Delta R.T.: -0.011 min
 Response: 645345
 Conc: 119.44 ng/ml



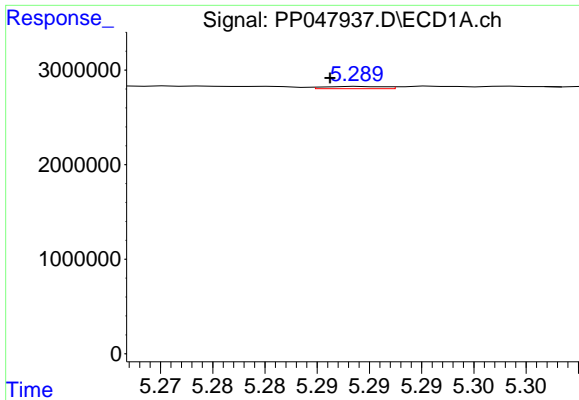
#18 AR-1242-3

R.T.: 5.193 min
 Delta R.T.: 0.011 min
 Response: 61888
 Conc: 19.32 ng/ml



#18 AR-1242-3

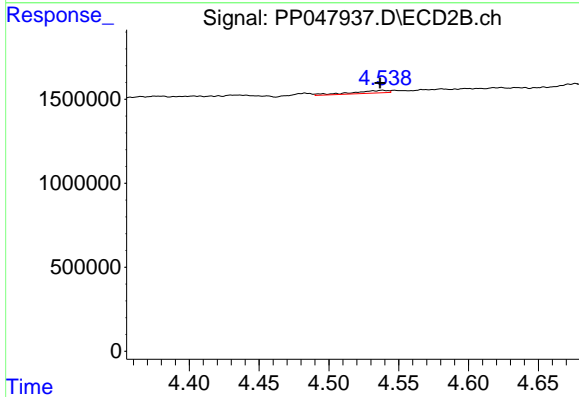
R.T.: 4.430 min
 Delta R.T.: -0.016 min
 Response: 606492
 Conc: 177.13 ng/ml



#19 AR-1242-4

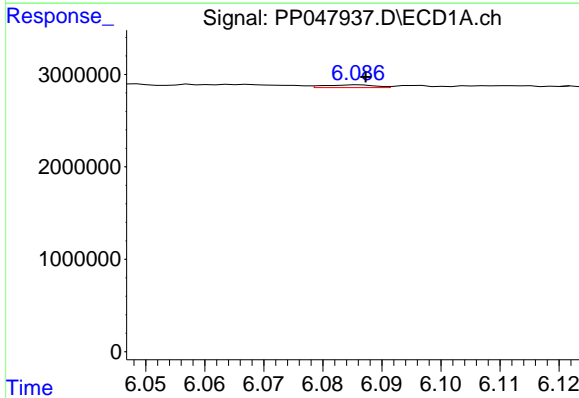
R.T.: 5.289 min
 Delta R.T.: 0.003 min
 Response: 91918
 Conc: 30.64 ng/ml

Instrument :
 ECD_P
 ClientSampleId :
 P008-SS002-0612-01



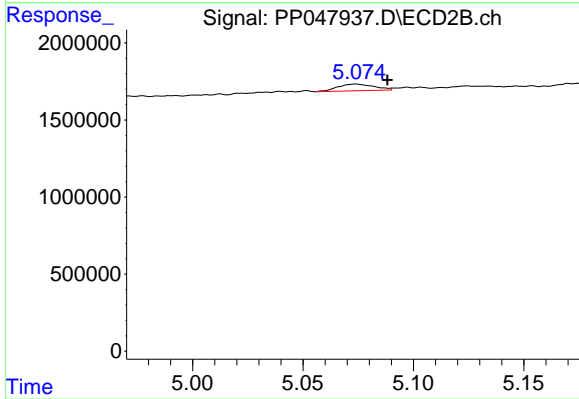
#19 AR-1242-4

R.T.: 4.538 min
 Delta R.T.: 0.002 min
 Response: 283786
 Conc: 98.97 ng/ml



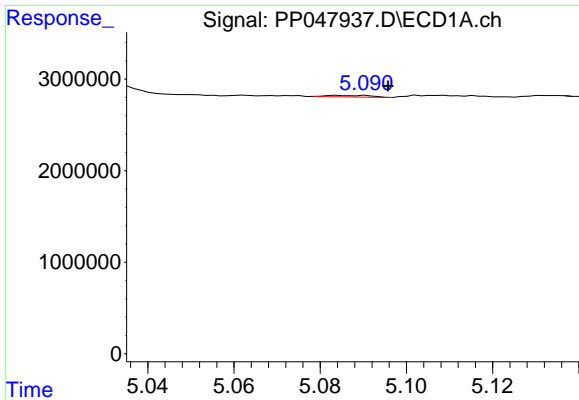
#20 AR-1242-5

R.T.: 6.086 min
 Delta R.T.: -0.001 min
 Response: 171110
 Conc: 74.32 ng/ml



#20 AR-1242-5

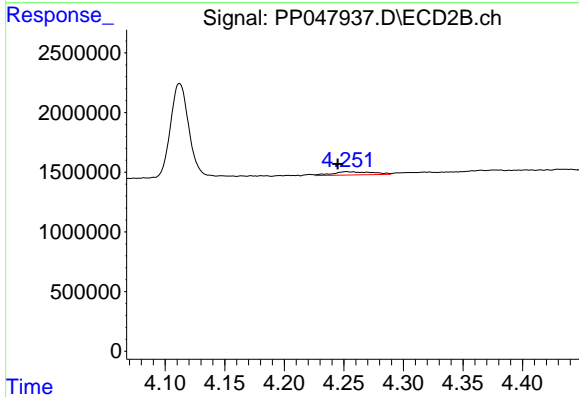
R.T.: 5.074 min
 Delta R.T.: -0.014 min
 Response: 498475
 Conc: 20.19 ng/ml



#21 AR-1248-1

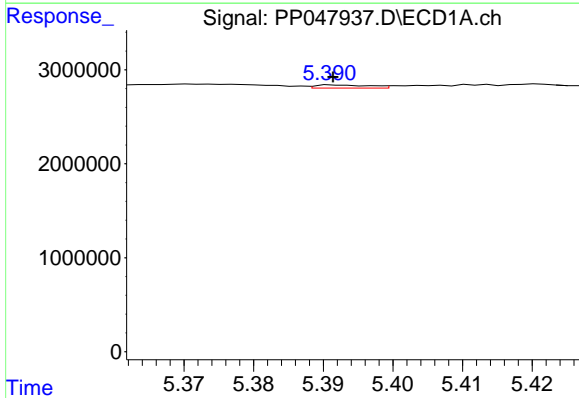
R.T.: 5.084 min
 Delta R.T.: -0.012 min
 Response: 122954
 Conc: 52.11 ng/ml

Instrument :
 ECD_P
 ClientSampleId :
 P008-SS002-0612-01



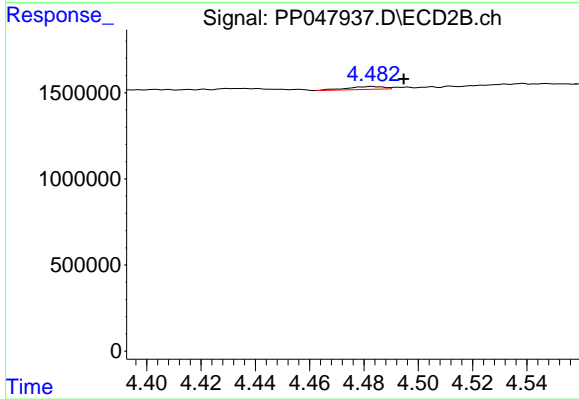
#21 AR-1248-1

R.T.: 4.252 min
 Delta R.T.: 0.007 min
 Response: 645345
 Conc: 184.86 ng/ml



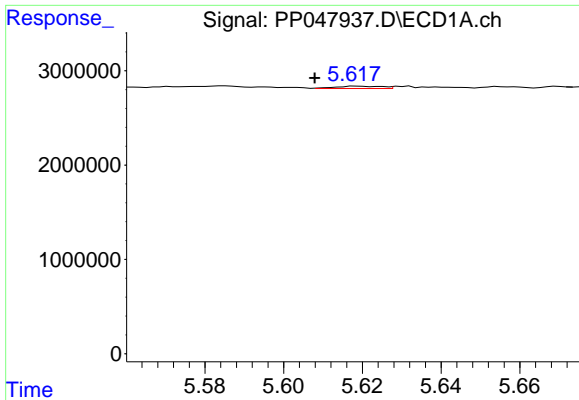
#22 AR-1248-2

R.T.: 5.392 min
 Delta R.T.: 0.000 min
 Response: 177467
 Conc: 53.86 ng/ml



#22 AR-1248-2

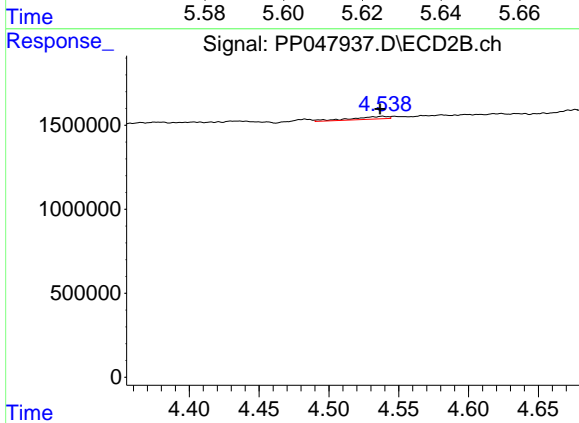
R.T.: 4.483 min
 Delta R.T.: -0.012 min
 Response: 158843
 Conc: 39.21 ng/ml



#23 AR-1248-3

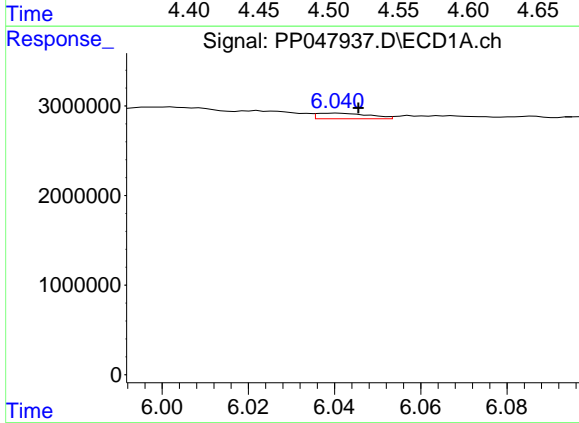
R.T.: 5.619 min
 Delta R.T.: 0.011 min
 Response: 204188
 Conc: 89.96 ng/ml

Instrument :
 ECD_P
 ClientSampleId :
 P008-SS002-0612-01



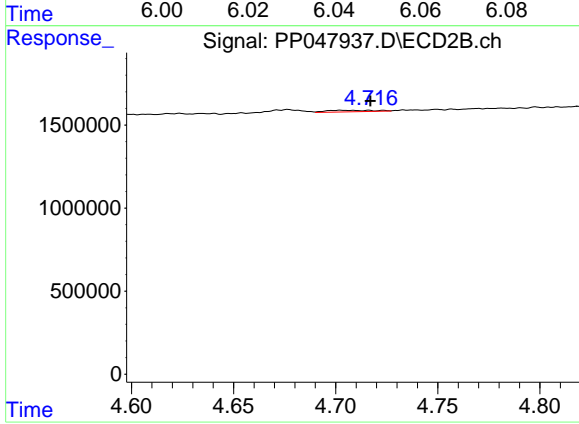
#23 AR-1248-3

R.T.: 4.538 min
 Delta R.T.: 0.002 min
 Response: 283786
 Conc: 98.97 ng/ml



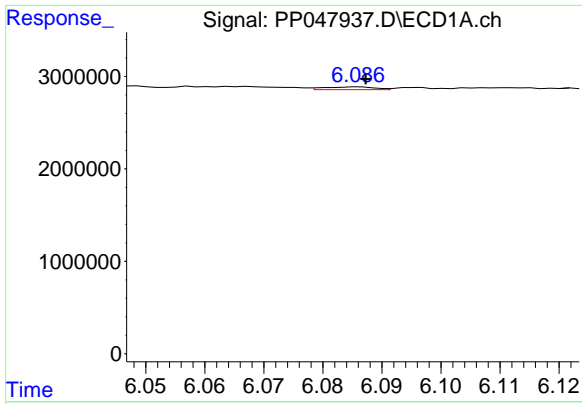
#24 AR-1248-4

R.T.: 6.041 min
 Delta R.T.: -0.005 min
 Response: 528477
 Conc: 329.45 ng/ml



#24 AR-1248-4

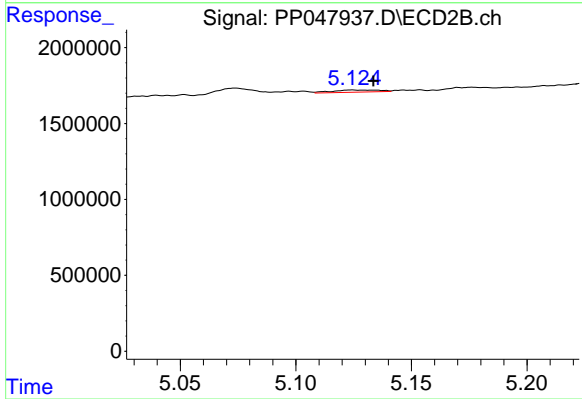
R.T.: 4.703 min
 Delta R.T.: -0.014 min
 Response: 147745
 Conc: 37.23 ng/ml



#25 AR-1248-5

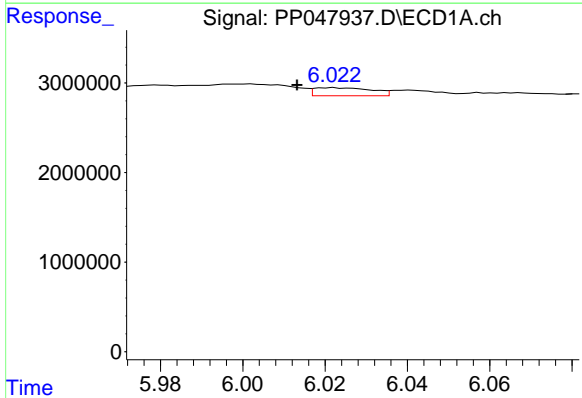
R.T.: 6.086 min
 Delta R.T.: -0.001 min
 Response: 171110
 Conc: 74.32 ng/ml

Instrument :
 ECD_P
 ClientSampleId :
 P008-SS002-0612-01



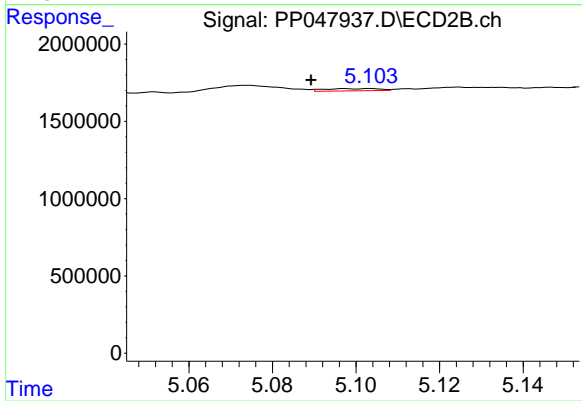
#25 AR-1248-5

R.T.: 5.124 min
 Delta R.T.: -0.009 min
 Response: 197752
 Conc: 66.96 ng/ml



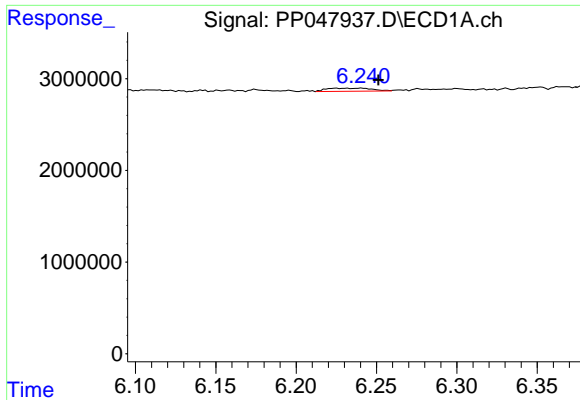
#26 AR-1254-1

R.T.: 6.022 min
 Delta R.T.: 0.009 min
 Response: 877271
 Conc: 11.21 ng/ml



#26 AR-1254-1

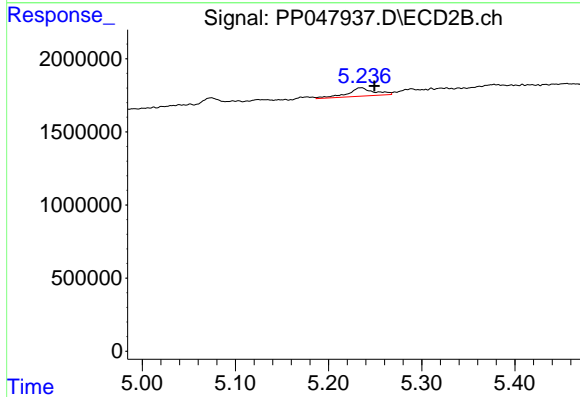
R.T.: 5.103 min
 Delta R.T.: 0.014 min
 Response: 130447
 Conc: 0.70 ng/ml



#27 AR-1254-2

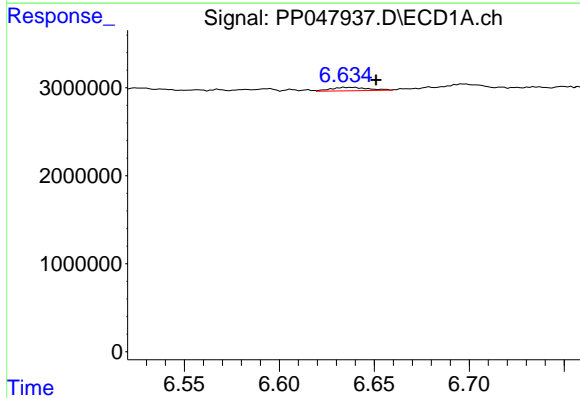
R.T.: 6.241 min
 Delta R.T.: -0.010 min
 Response: 662260
 Conc: 5.45 ng/ml

Instrument :
 ECD_P
 ClientSampleId :
 P008-SS002-0612-01



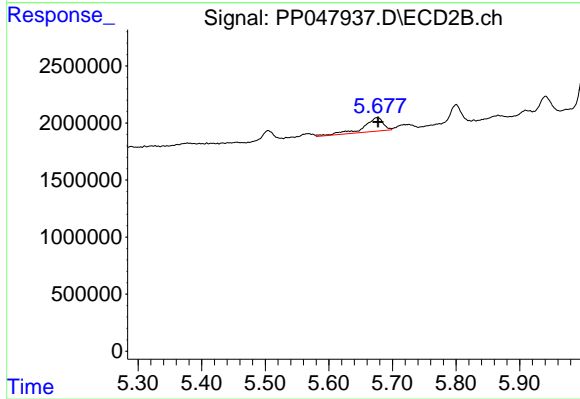
#27 AR-1254-2

R.T.: 5.235 min
 Delta R.T.: -0.014 min
 Response: 1148593
 Conc: 6.97 ng/ml



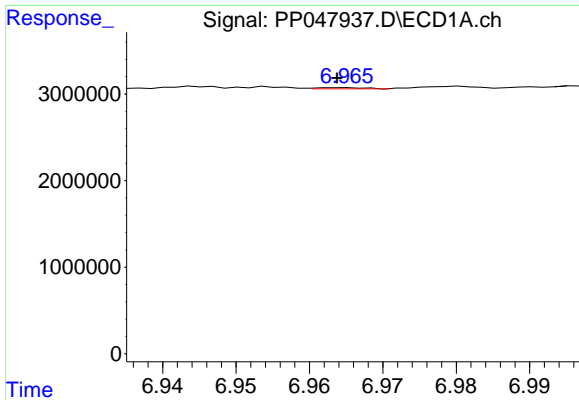
#28 AR-1254-3

R.T.: 6.635 min
 Delta R.T.: -0.016 min
 Response: 533579
 Conc: 4.07 ng/ml



#28 AR-1254-3

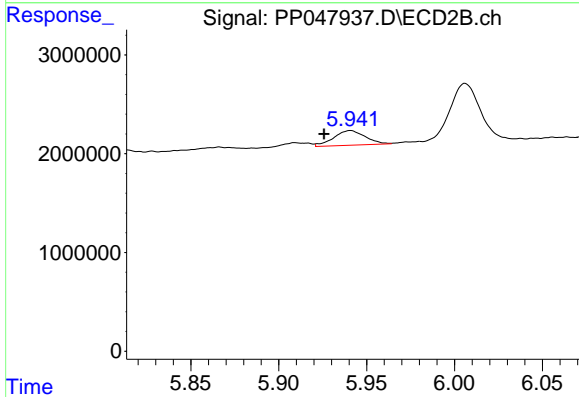
R.T.: 5.676 min
 Delta R.T.: -0.001 min
 Response: 2599543
 Conc: 10.15 ng/ml



#29 AR-1254-4

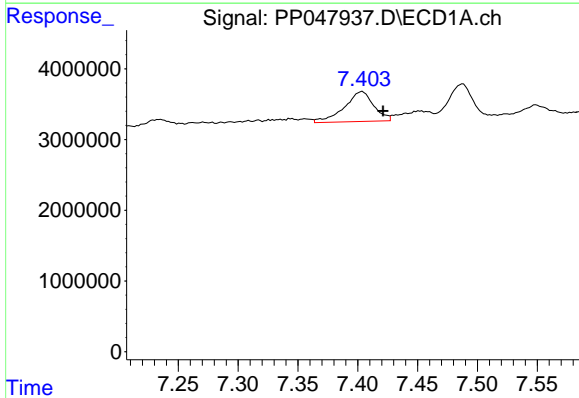
R.T.: 6.965 min
 Delta R.T.: 0.000 min
 Response: 66457
 Conc: 0.70 ng/ml

Instrument :
 ECD_P
 ClientSampleId :
 P008-SS002-0612-01



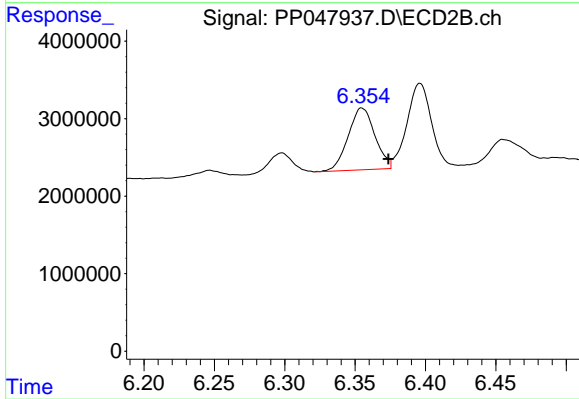
#29 AR-1254-4

R.T.: 5.941 min
 Delta R.T.: 0.015 min
 Response: 1863255
 Conc: 10.18 ng/ml



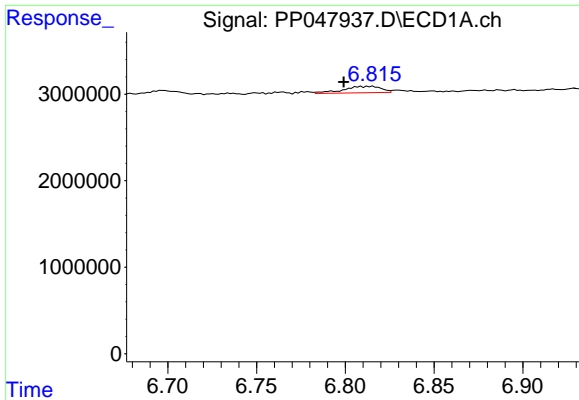
#30 AR-1254-5

R.T.: 7.404 min
 Delta R.T.: -0.017 min
 Response: 7253656
 Conc: 74.36 ng/ml



#30 AR-1254-5

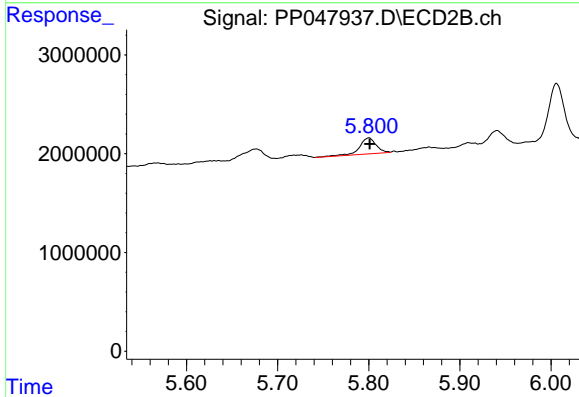
R.T.: 6.355 min
 Delta R.T.: -0.019 min
 Response: 10548592
 Conc: 43.94 ng/ml



#31 AR-1260-1

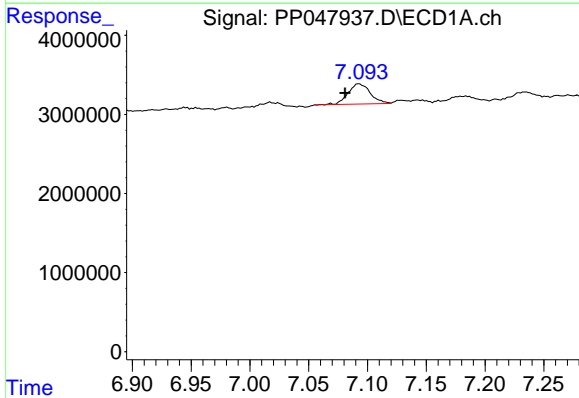
R.T.: 6.809 min
 Delta R.T.: 0.010 min
 Response: 1111494
 Conc: 12.29 ng/ml

Instrument :
 ECD_P
 ClientSampleId :
 P008-SS002-0612-01



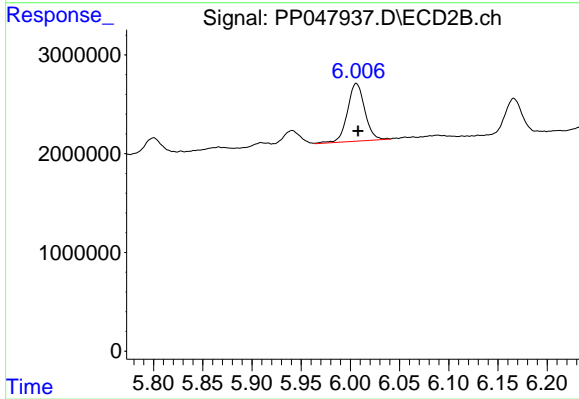
#31 AR-1260-1

R.T.: 5.800 min
 Delta R.T.: 0.000 min
 Response: 2073224
 Conc: 12.17 ng/ml



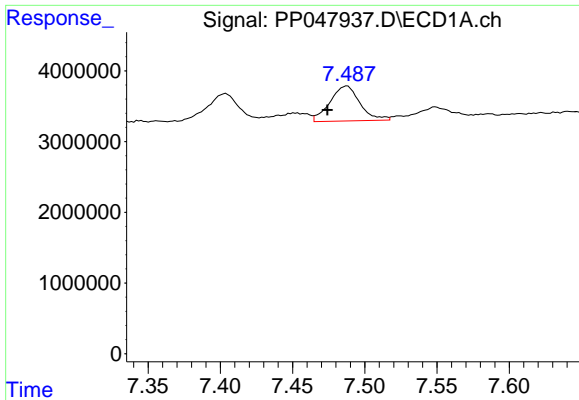
#32 AR-1260-2

R.T.: 7.093 min
 Delta R.T.: 0.012 min
 Response: 3358528
 Conc: 28.93 ng/ml



#32 AR-1260-2

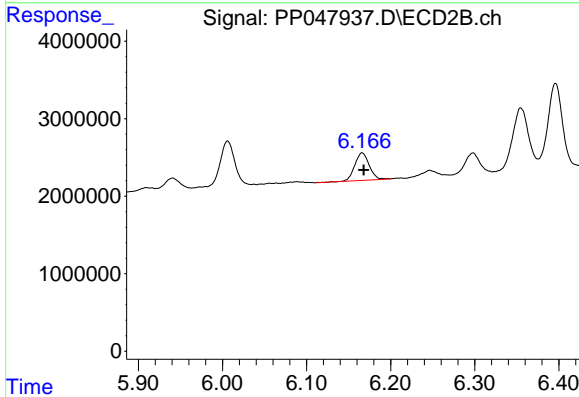
R.T.: 6.006 min
 Delta R.T.: -0.002 min
 Response: 7156001
 Conc: 29.50 ng/ml



#33 AR-1260-3

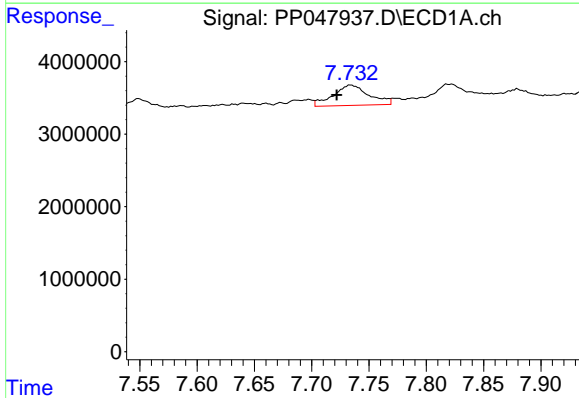
R.T.: 7.488 min
 Delta R.T.: 0.014 min
 Response: 7127047
 Conc: 69.15 ng/ml

Instrument :
 ECD_P
 ClientSampleId :
 P008-SS002-0612-01



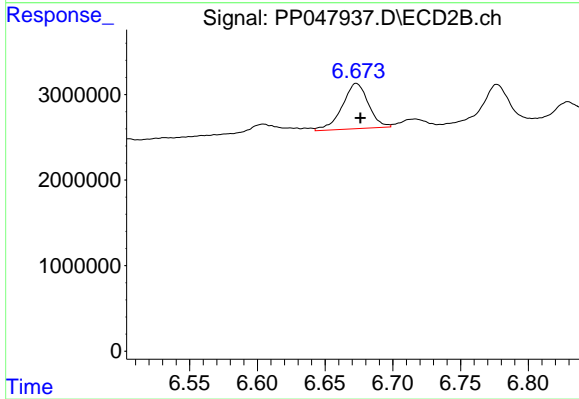
#33 AR-1260-3

R.T.: 6.166 min
 Delta R.T.: -0.002 min
 Response: 4245996
 Conc: 21.25 ng/ml



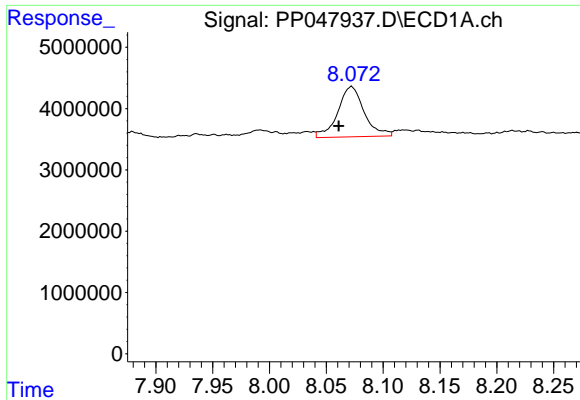
#34 AR-1260-4

R.T.: 7.734 min
 Delta R.T.: 0.012 min
 Response: 6081634
 Conc: 62.94 ng/ml



#34 AR-1260-4

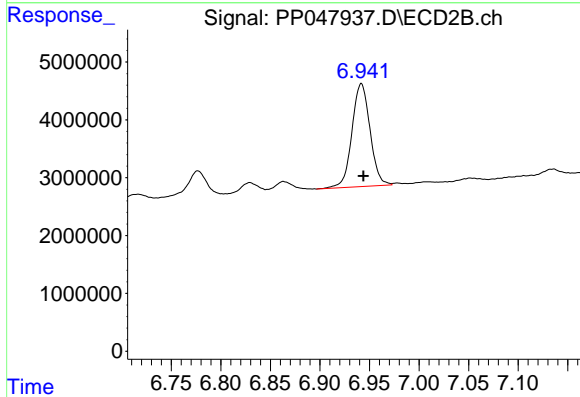
R.T.: 6.673 min
 Delta R.T.: -0.003 min
 Response: 7136211
 Conc: 40.39 ng/ml



#35 AR-1260-5

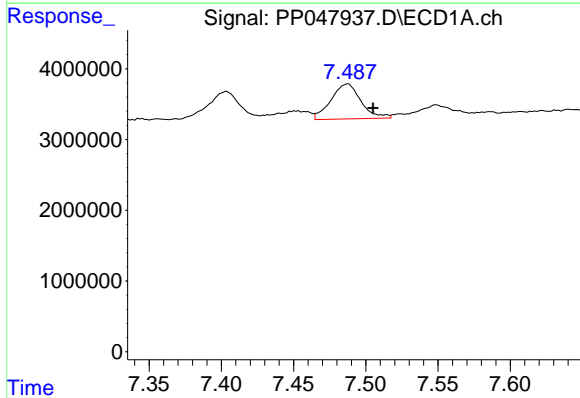
R.T.: 8.072 min
 Delta R.T.: 0.011 min
 Response: 13221473
 Conc: 73.91 ng/ml

Instrument :
 ECD_P
 ClientSampleId :
 P008-SS002-0612-01



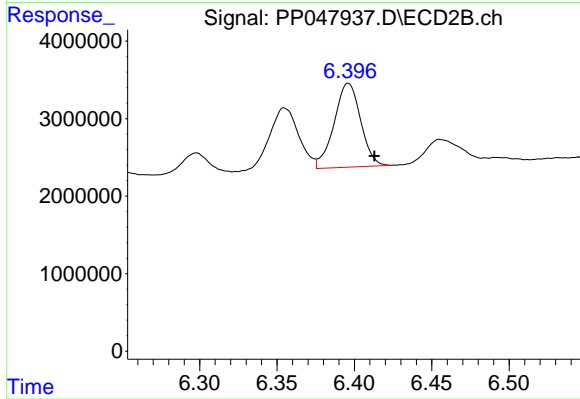
#35 AR-1260-5

R.T.: 6.942 min
 Delta R.T.: -0.002 min
 Response: 22638336
 Conc: 48.12 ng/ml



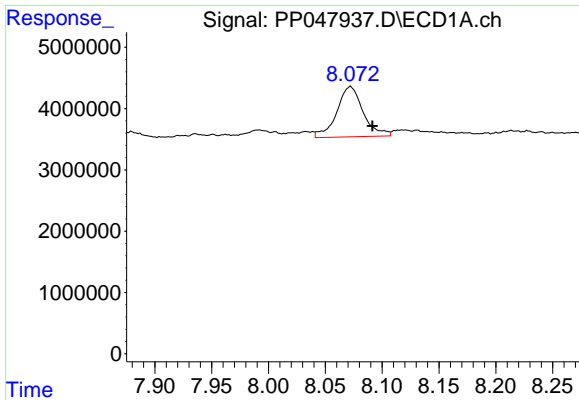
#36 AR-1262-1

R.T.: 7.488 min
 Delta R.T.: -0.017 min
 Response: 7127047
 Conc: 46.82 ng/ml



#36 AR-1262-1

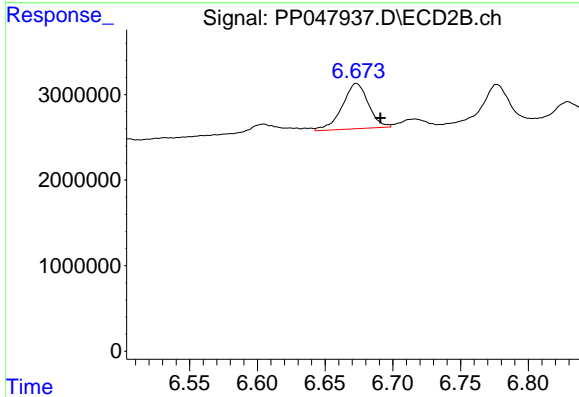
R.T.: 6.396 min
 Delta R.T.: -0.017 min
 Response: 12919606
 Conc: 39.71 ng/ml



#37 AR-1262-2

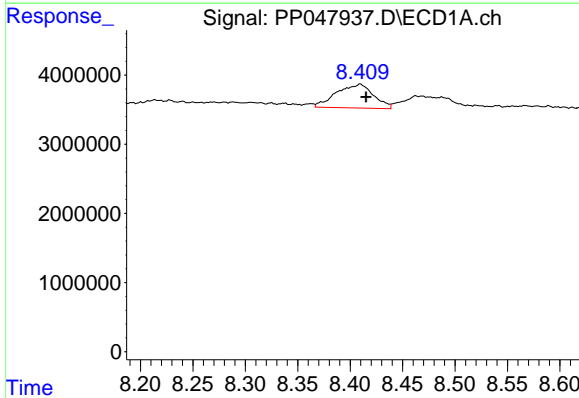
R.T.: 8.072 min
 Delta R.T.: -0.019 min
 Response: 13221473
 Conc: 61.99 ng/ml

Instrument :
 ECD_P
 ClientSampleId :
 P008-SS002-0612-01



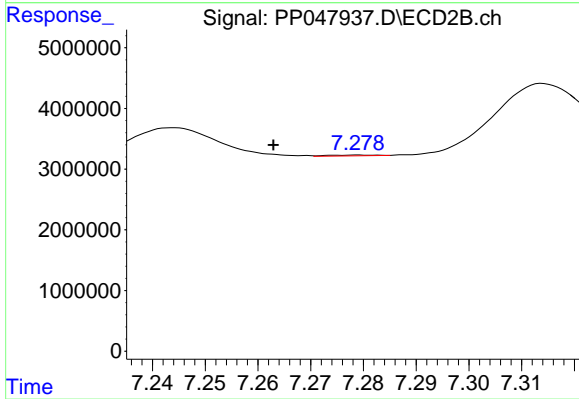
#37 AR-1262-2

R.T.: 6.673 min
 Delta R.T.: -0.018 min
 Response: 7136211
 Conc: 29.20 ng/ml



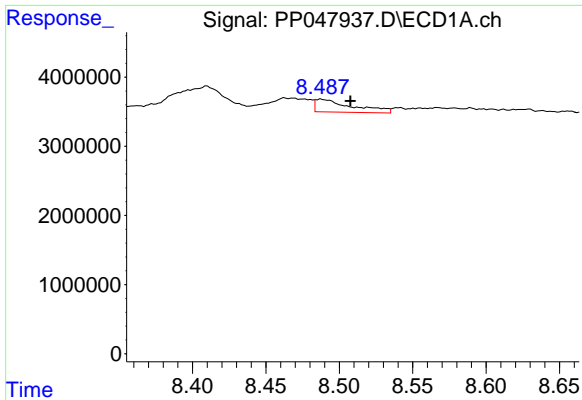
#38 AR-1262-3

R.T.: 8.410 min
 Delta R.T.: -0.005 min
 Response: 8460228
 Conc: 59.95 ng/ml



#38 AR-1262-3

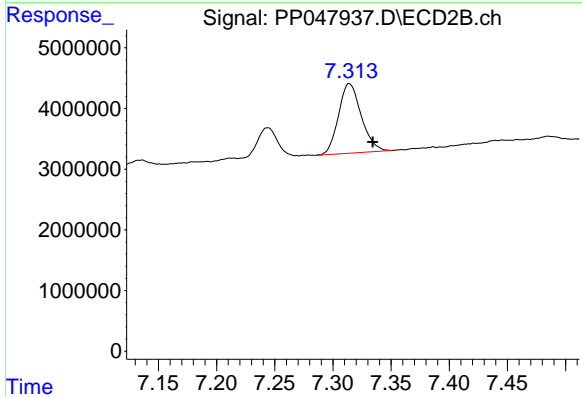
R.T.: 7.279 min
 Delta R.T.: 0.016 min
 Response: 85644
 Conc: 0.40 ng/ml



#39 AR-1262-4

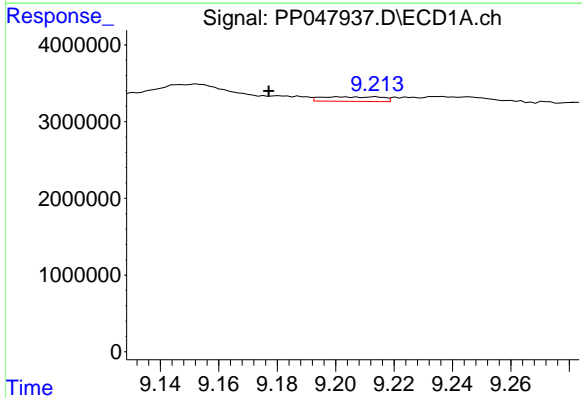
R.T.: 8.488 min
 Delta R.T.: -0.020 min
 Response: 3209325
 Conc: 53.32 ng/ml

Instrument :
 ECD_P
 ClientSampleId :
 P008-SS002-0612-01



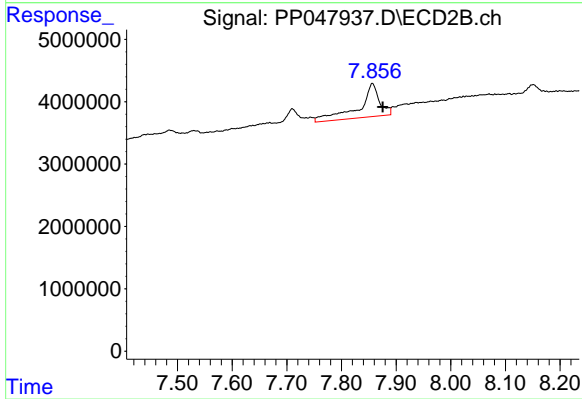
#39 AR-1262-4

R.T.: 7.314 min
 Delta R.T.: -0.020 min
 Response: 15574132
 Conc: 43.13 ng/ml



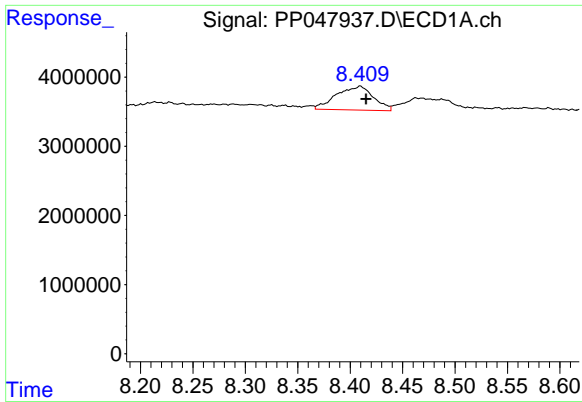
#40 AR-1262-5

R.T.: 9.201 min
 Delta R.T.: 0.024 min
 Response: 863692
 Conc: 12.13 ng/ml



#40 AR-1262-5

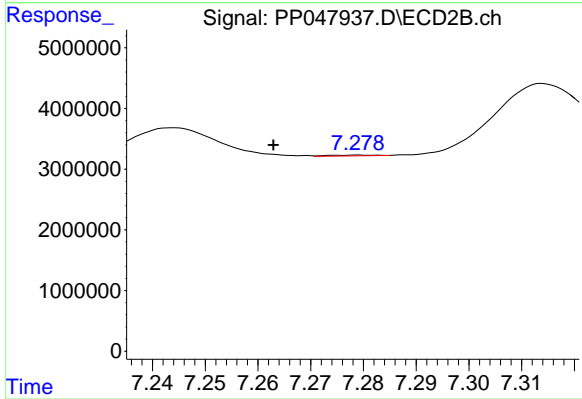
R.T.: 7.857 min
 Delta R.T.: -0.019 min
 Response: 13887526
 Conc: 80.67 ng/ml



#41 AR-1268-1

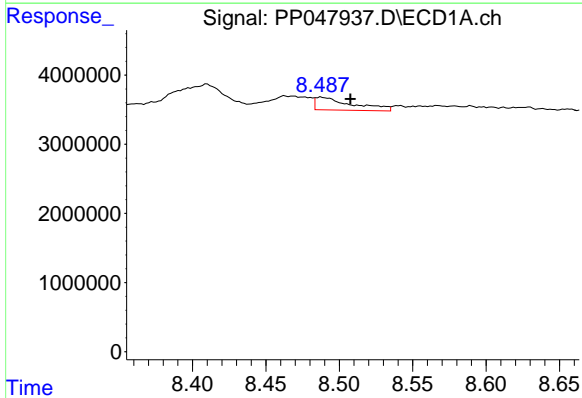
R.T.: 8.410 min
 Delta R.T.: -0.005 min
 Response: 8460228
 Conc: 59.95 ng/ml

Instrument :
 ECD_P
 ClientSampleId :
 P008-SS002-0612-01



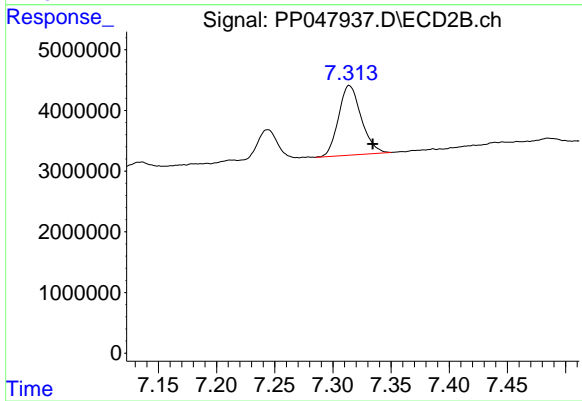
#41 AR-1268-1

R.T.: 7.279 min
 Delta R.T.: 0.016 min
 Response: 85644
 Conc: 0.40 ng/ml



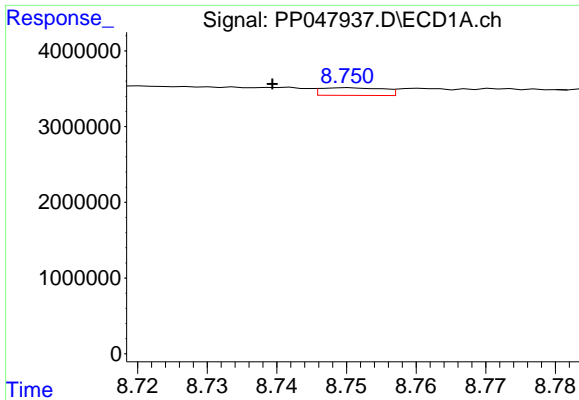
#42 AR-1268-2

R.T.: 8.488 min
 Delta R.T.: -0.020 min
 Response: 3209325
 Conc: 28.79 ng/ml



#42 AR-1268-2

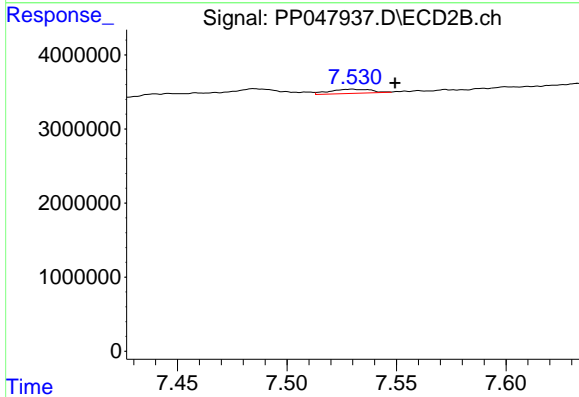
R.T.: 7.314 min
 Delta R.T.: -0.020 min
 Response: 15574132
 Conc: 43.13 ng/ml



#43 AR-1268-3

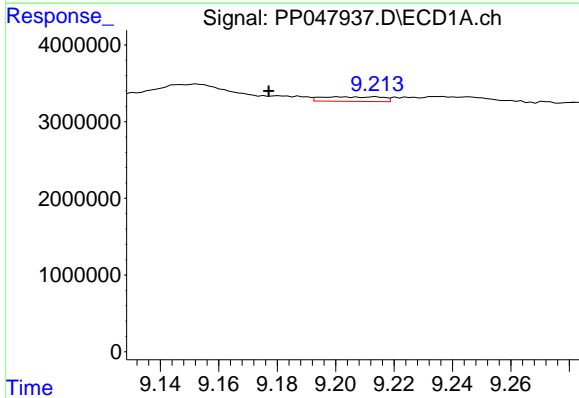
R.T.: 8.750 min
 Delta R.T.: 0.011 min
 Response: 630163
 Conc: 94.86 ng/ml

Instrument :
 ECD_P
 ClientSampleId :
 P008-SS002-0612-01



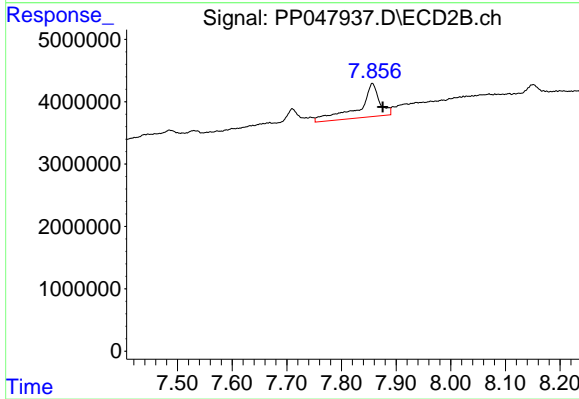
#43 AR-1268-3

R.T.: 7.530 min
 Delta R.T.: -0.020 min
 Response: 760276
 Conc: 40.99 ng/ml



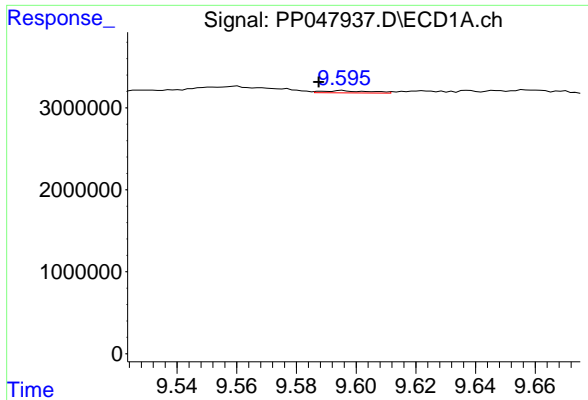
#44 AR-1268-4

R.T.: 9.201 min
 Delta R.T.: 0.024 min
 Response: 863692
 Conc: 12.13 ng/ml



#44 AR-1268-4

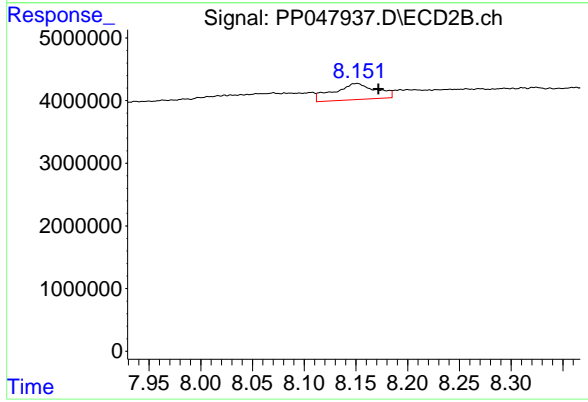
R.T.: 7.857 min
 Delta R.T.: -0.019 min
 Response: 13887526
 Conc: 80.67 ng/ml



#45 AR-1268-5

R.T.: 9.595 min
 Delta R.T.: 0.008 min
 Response: 299311
 Conc: 11.19 ng/ml

Instrument :
 ECD_P
 ClientSampleId :
 P008-SS002-0612-01



#45 AR-1268-5

R.T.: 8.151 min
 Delta R.T.: -0.021 min
 Response: 7323293
 Conc: 122.15 ng/ml