

Data Path : Z:\pestpcbsrv\HPCHEM1\ECD\_P\Data\PP052422\  
 Data File : PP047967.D  
 Signal(s) : Signal #1: ECD1A.ch Signal #2: ECD2B.ch  
 Acq On : 24 May 2022 17:20  
 Operator : YP\AJ  
 Sample : N2877-12  
 Misc :  
 ALS Vial : 24 Sample Multiplier: 1

**Instrument :**  
 ECD\_P  
**ClientSampleId :**  
 P007-SS017-0006-01

Integration File signal 1: autoint1.e  
 Integration File signal 2: autoint2.e  
 Quant Time: May 25 05:25:53 2022  
 Quant Method : Z:\pestpcbsrv\HPCHEM1\ECD\_P\methods\PP051022.M  
 Quant Title : GC EXTRACTABLES  
 QLast Update : Mon May 23 09:44:20 2022  
 Response via : Initial Calibration  
 Integrator: ChemStation

Volume Inj. : 2 µl  
 Signal #1 Phase : ZB-MR1 Signal #2 Phase: ZB-MR2  
 Signal #1 Info : 30Mx0.32mmx 0.50µ Signal #2 Info : 30M x 0.32mm x 0.25µm

Compound	RT#1	RT#2	Resp#1	Resp#2	ng/ml	ng/ml
-----						
System Monitoring Compounds						
1) SA Tetrachlo...	3.840	3.108	59270000	71387502	22.406	20.242
2) SA Decachlor...	9.887	8.399	31897127	51207043	21.060	17.571
Target Compounds						
31) L7 AR-1260-1	6.812	5.799	20728520	37307523	229.142	218.999
32) L7 AR-1260-2	7.094	6.006	28337074	46818204	244.077	193.021
33) L7 AR-1260-3	7.488	6.165	32229190	37116871	312.710	185.730 #
34) L7 AR-1260-4	7.735	6.673	27211384	37286127	281.599	211.022 #
35) L7 AR-1260-5	8.073	6.942	58306791	109.7E6	325.949	233.246 #
-----						

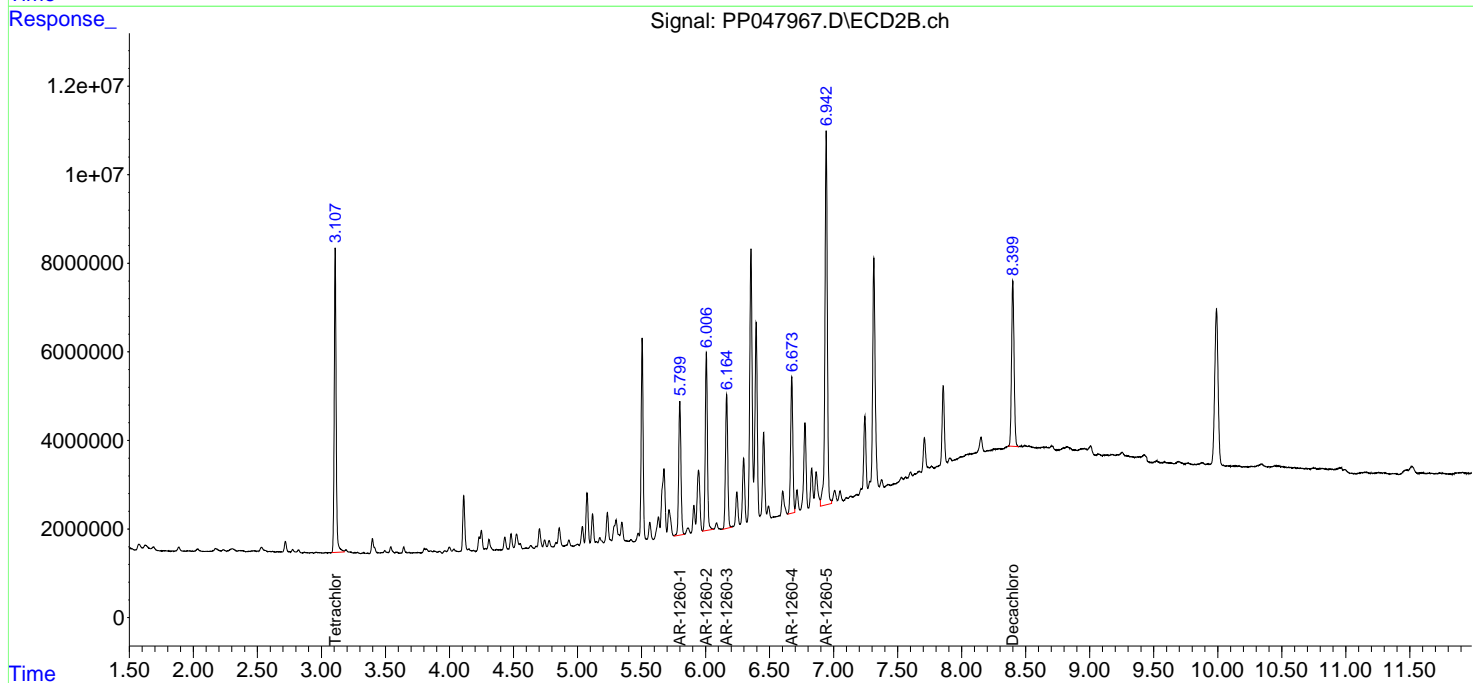
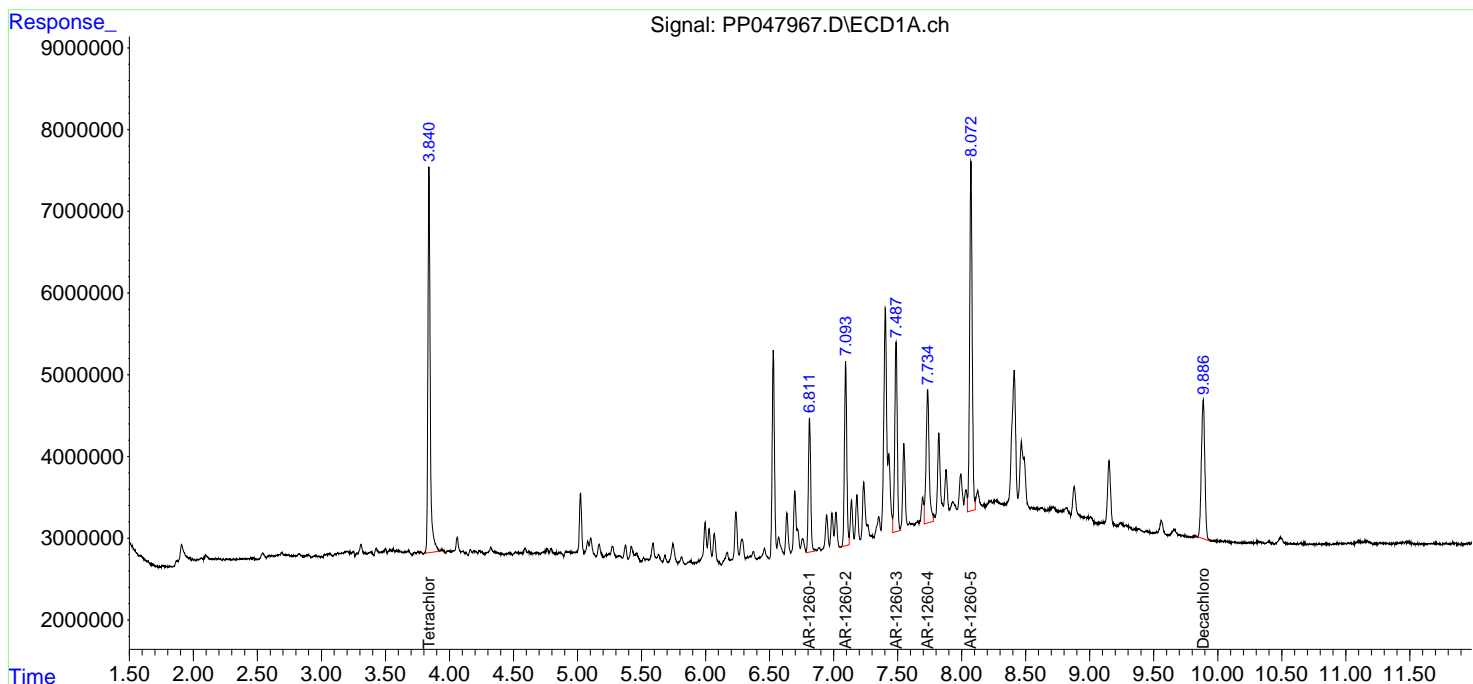
(f)=RT Delta > 1/2 Window (#)=Amounts differ by > 25% (m)=manual int.

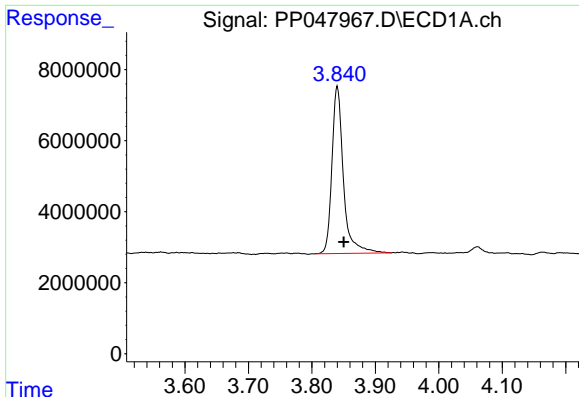
Data Path : Z:\pestpcbsrv\HPCHEM1\ECD\_P\Data\PP052422\  
 Data File : PP047967.D  
 Signal(s) : Signal #1: ECD1A.ch Signal #2: ECD2B.ch  
 Acq On : 24 May 2022 17:20  
 Operator : YP\AJ  
 Sample : N2877-12  
 Misc :  
 ALS Vial : 24 Sample Multiplier: 1

Instrument :  
 ECD\_P  
 ClientSampleId :  
 P007-SS017-0006-01

Integration File signal 1: autoint1.e  
 Integration File signal 2: autoint2.e  
 Quant Time: May 25 05:25:53 2022  
 Quant Method : Z:\pestpcbsrv\HPCHEM1\ECD\_P\methods\PP051022.M  
 Quant Title : GC EXTRACTABLES  
 QLast Update : Mon May 23 09:44:20 2022  
 Response via : Initial Calibration  
 Integrator: ChemStation

Volume Inj. : 2 µl  
 Signal #1 Phase : ZB-MR1 Signal #2 Phase: ZB-MR2  
 Signal #1 Info : 30Mx0.32mmx 0.50µ Signal #2 Info : 30M x 0.32mm x 0.25µm

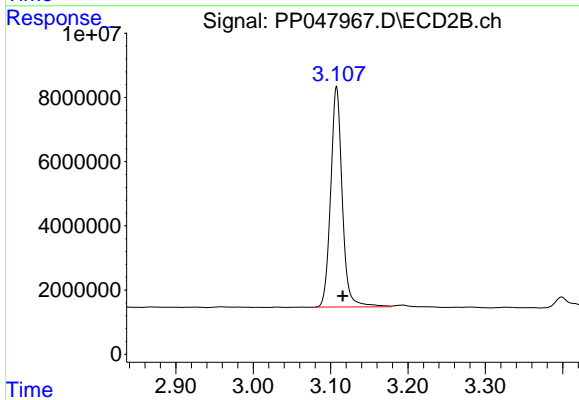




#1 Tetrachloro-m-xylene

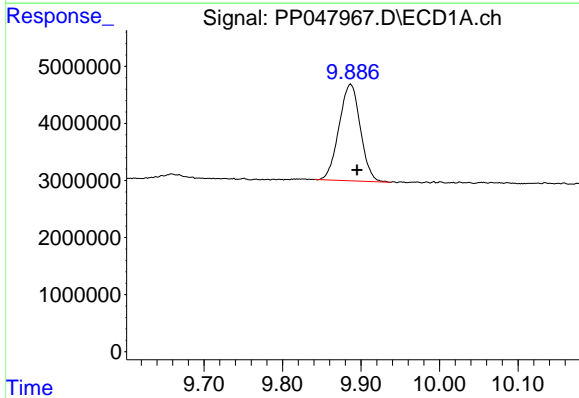
R.T.: 3.840 min  
Delta R.T.: -0.010 min  
Response: 59270000  
Conc: 22.41 ng/ml

Instrument :  
ECD\_P  
ClientSampleId :  
P007-SS017-0006-01



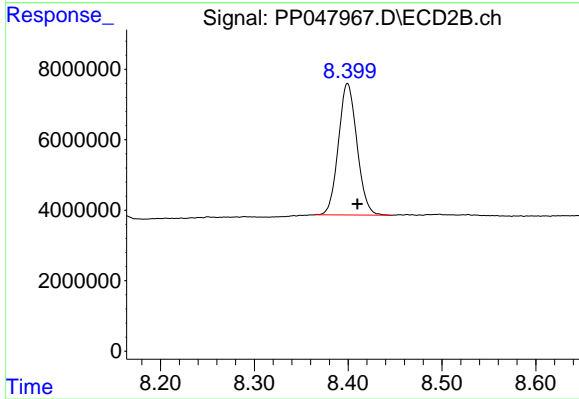
#1 Tetrachloro-m-xylene

R.T.: 3.108 min  
Delta R.T.: -0.008 min  
Response: 71387502  
Conc: 20.24 ng/ml



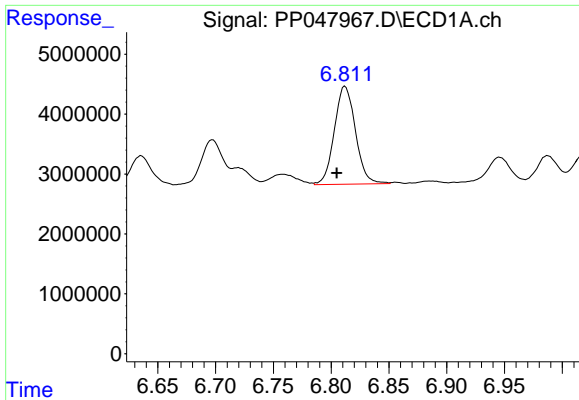
#2 Decachlorobiphenyl

R.T.: 9.887 min  
Delta R.T.: -0.008 min  
Response: 31897127  
Conc: 21.06 ng/ml



#2 Decachlorobiphenyl

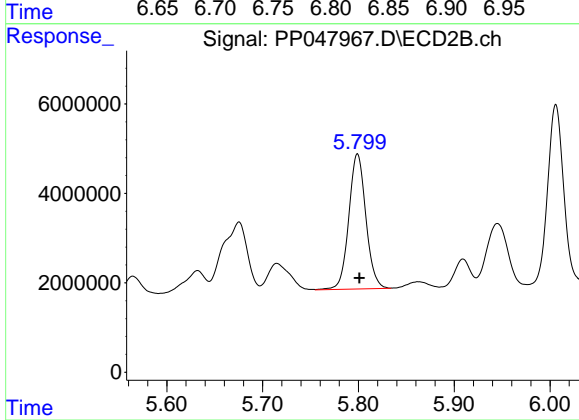
R.T.: 8.399 min  
Delta R.T.: -0.011 min  
Response: 51207043  
Conc: 17.57 ng/ml



#31 AR-1260-1

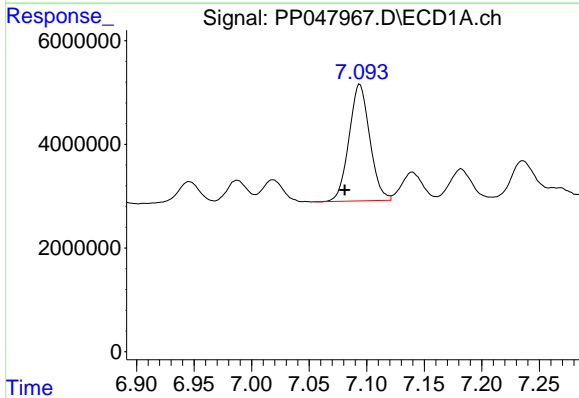
R.T.: 6.812 min  
 Delta R.T.: 0.007 min  
 Response: 20728520  
 Conc: 229.14 ng/ml

Instrument :  
 ECD\_P  
 ClientSampleId :  
 P007-SS017-0006-01



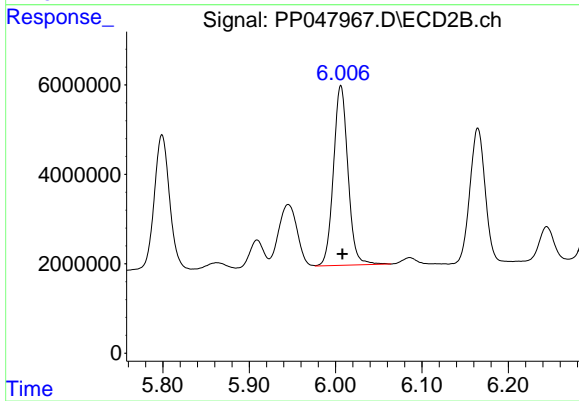
#31 AR-1260-1

R.T.: 5.799 min  
 Delta R.T.: -0.002 min  
 Response: 37307523  
 Conc: 219.00 ng/ml



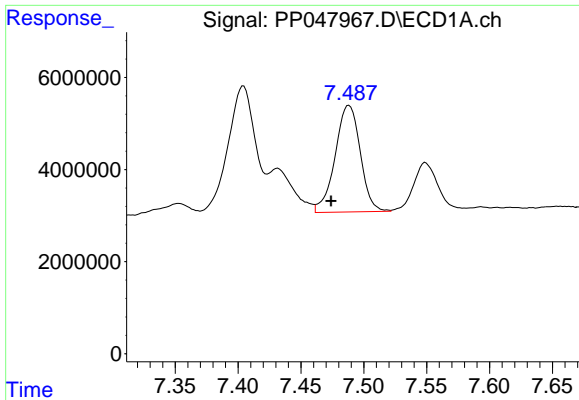
#32 AR-1260-2

R.T.: 7.094 min  
 Delta R.T.: 0.013 min  
 Response: 28337074  
 Conc: 244.08 ng/ml



#32 AR-1260-2

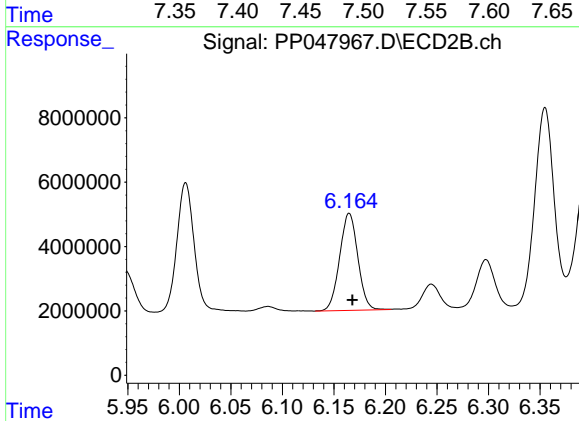
R.T.: 6.006 min  
 Delta R.T.: -0.002 min  
 Response: 46818204  
 Conc: 193.02 ng/ml



#33 AR-1260-3

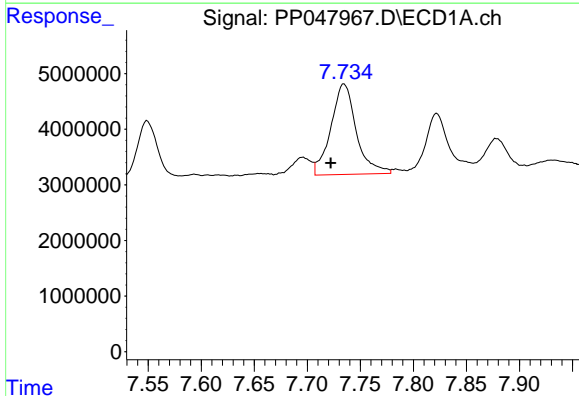
R.T.: 7.488 min  
 Delta R.T.: 0.014 min  
 Response: 32229190  
 Conc: 312.71 ng/ml

Instrument :  
 ECD\_P  
 ClientSampleId :  
 P007-SS017-0006-01



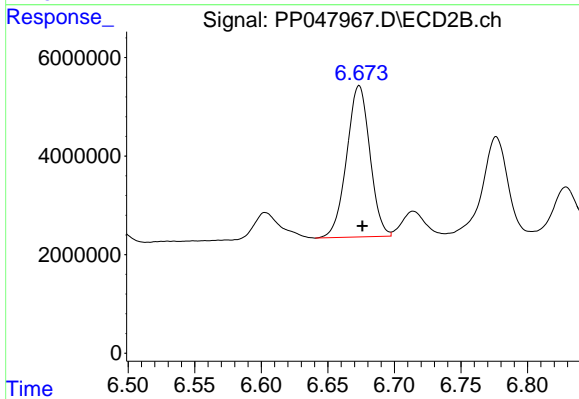
#33 AR-1260-3

R.T.: 6.165 min  
 Delta R.T.: -0.003 min  
 Response: 37116871  
 Conc: 185.73 ng/ml



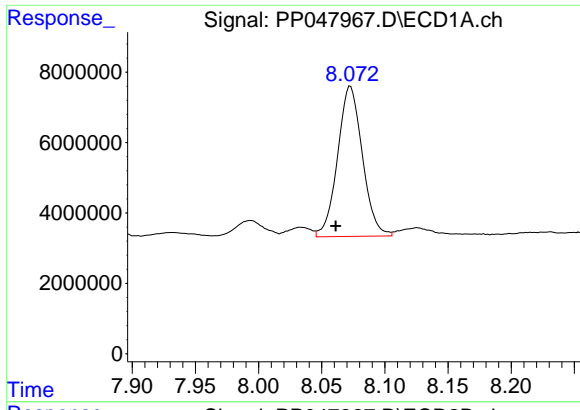
#34 AR-1260-4

R.T.: 7.735 min  
 Delta R.T.: 0.013 min  
 Response: 27211384  
 Conc: 281.60 ng/ml



#34 AR-1260-4

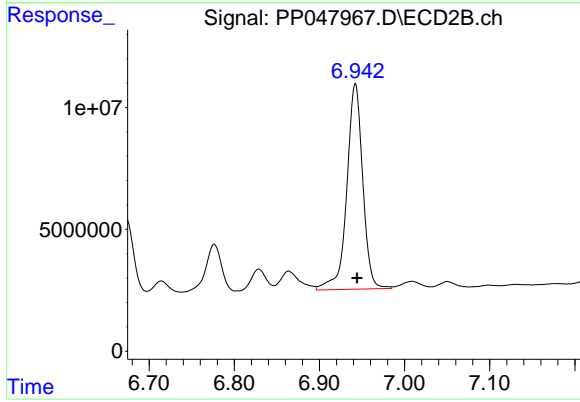
R.T.: 6.673 min  
 Delta R.T.: -0.003 min  
 Response: 37286127  
 Conc: 211.02 ng/ml



#35 AR-1260-5

R.T.: 8.073 min  
Delta R.T.: 0.012 min  
Response: 58306791  
Conc: 325.95 ng/ml

Instrument :  
ECD\_P  
ClientSampleId :  
P007-SS017-0006-01



#35 AR-1260-5

R.T.: 6.942 min  
Delta R.T.: -0.002 min  
Response: 109720631  
Conc: 233.25 ng/ml