

Data Path : Z:\pestpcbsrv\HPCHEM1\ECD\_P\Data\PP052423\  
 Data File : PP057834.D  
 Signal(s) : Signal #1: ECD1A.ch Signal #2: ECD2B.ch  
 Acq On : 24 May 2023 13:02  
 Operator : YP\AJ  
 Sample : AR1242CCC500  
 Misc :  
 ALS Vial : 4 Sample Multiplier: 1

Instrument :  
 ECD\_P  
 ClientSampleId :

Integration File signal 1: autoint1.e  
 Integration File signal 2: autoint2.e  
 Quant Time: May 24 21:22:42 2023  
 Quant Method : Z:\pestpcbsrv\HPCHEM1\ECD\_P\methods\PP050823.M  
 Quant Title : GC EXTRACTABLES  
 QLast Update : Mon May 08 19:18:05 2023  
 Response via : Initial Calibration  
 Integrator: ChemStation

Volume Inj. : 2 µl  
 Signal #1 Phase : ZB-MR1 Signal #2 Phase: ZB-MR2  
 Signal #1 Info : 30Mx0.32mmx 0.50µ Signal #2 Info : 30M x 0.32mm x 0.25µm

Compound	RT#1	RT#2	Resp#1	Resp#2	ng/ml	ng/ml
System Monitoring Compounds						
1) SA Tetrachlo...	4.391	3.623	106.1E6	109.8E6	48.352	48.396
2) SA Decachlor...	10.225	8.687	55412769	66646978	48.897	42.457
Target Compounds						
3) L1 AR-1016-1	5.571	4.720	21676184	26625041	347.959	357.291
4) L1 AR-1016-2	5.593	4.739	31511809	36582100	350.496	353.902
5) L1 AR-1016-3	5.656	4.917	20583855	21143588	364.035	358.634
6) L1 AR-1016-4	5.755	4.959	16447225	17479860	356.137	371.604
7) L1 AR-1016-5	6.054	5.175	18362916	22627934	393.742	381.095
8) L2 AR-1221-1	4.596	3.837	3097406	3219518	107.038	109.179
9) L2 AR-1221-2	4.688	3.925	4625110	4971526	213.400	223.190
10) L2 AR-1221-3	4.764	4.002	14787415	16208301	245.472	254.394
11) L3 AR-1232-1	4.764	4.002	14787415	16208301	337.604	351.215
12) L3 AR-1232-2	5.300	4.739	19223743	36582100	737.144	773.045
13) L3 AR-1232-3	5.593	4.917	31511809	21143588	772.100	776.806
14) L3 AR-1232-4	5.755	5.002	16447225	21177957	772.373	868.712
15) L3 AR-1232-5	5.848	5.175	15104688	22627934	827.072	818.303
16) L4 AR-1242-1	5.571	4.720	21676184	26625041	455.019	457.388
17) L4 AR-1242-2	5.593	4.739	31511809	36582100	460.787	458.318
18) L4 AR-1242-3	5.656	4.917	20583855	21143588	472.753	450.840
19) L4 AR-1242-4	5.755	5.002	16447225	21177957	466.760	456.418
20) L4 AR-1242-5	6.500	5.530	17052119	25283894	526.279	452.227
21) L5 AR-1248-1	5.571	4.720	21676184	26625041	515.083	517.405
22) L5 AR-1248-2	5.848	4.959	15104688	17479860	231.665	243.442
23) L5 AR-1248-3	6.054	5.002	18362916	21177957	264.437	279.914
24) L5 AR-1248-4	6.461	5.175	15064861	22627934	235.717	253.672
25) L5 AR-1248-5	6.500	5.572	17052119	19652783	265.779	236.376
26) L6 AR-1254-1	6.434	5.530	13023179	25283894	194.034	226.438
27) L6 AR-1254-2	6.658	5.680	15919718	8780173	168.288	87.975 #
28) L6 AR-1254-3	7.025	6.087	8301114	11121301	91.132	71.084
29) L6 AR-1254-4	7.313	6.318	5018369	7050924	84.254	76.431
30) L6 AR-1254-5	7.736	6.739	2808543	5723073	40.910	39.535
31) L7 AR-1260-1	7.192	6.233	2811245	6374922	35.632	57.983 #
32) L7 AR-1260-2	7.450	6.408	2452226	2487763	30.608	19.574 #
33) L7 AR-1260-3	7.802	6.562	449953	2482207	7.897	20.243 #
34) L7 AR-1260-4	8.027	7.038	1418134	222072	21.344	2.541 #
35) L7 AR-1260-5	8.359	7.278	344662	435291	3.210	2.357 #
36) L8 AR-1262-1	7.802	6.809f	449953	1570508	5.225	24.718 #
37) L8 AR-1262-2	8.359	7.038	344662	222072	2.831	1.791 #
38) L8 AR-1262-3	8.700f	7.560	240664	287113	2.768	3.060
39) L8 AR-1262-4	8.775	7.630	196236	545250	2.927	3.201
40) L8 AR-1262-5	9.451	8.133	84490	278738	2.207	3.787 #
41) L9 AR-1268-1	8.700f	7.560	240664	287113	1.546	1.091 #

Data Path : Z:\pestpcbsrv\HPCHEM1\ECD\_P\Data\PP052423\  
 Data File : PP057834.D  
 Signal(s) : Signal #1: ECD1A.ch Signal #2: ECD2B.ch  
 Acq On : 24 May 2023 13:02  
 Operator : YP\AJ  
 Sample : AR1242CCC500  
 Misc :  
 ALS Vial : 4 Sample Multiplier: 1

Instrument :  
 ECD\_P  
 ClientSampleId :

Integration File signal 1: autoint1.e  
 Integration File signal 2: autoint2.e  
 Quant Time: May 24 21:22:42 2023  
 Quant Method : Z:\pestpcbsrv\HPCHEM1\ECD\_P\methods\PP050823.M  
 Quant Title : GC EXTRACTABLES  
 QLast Update : Mon May 08 19:18:05 2023  
 Response via : Initial Calibration  
 Integrator: ChemStation

Volume Inj. : 2 µl  
 Signal #1 Phase : ZB-MR1 Signal #2 Phase: ZB-MR2  
 Signal #1 Info : 30Mx0.32mmx 0.50µ Signal #2 Info : 30M x 0.32mm x 0.25µm

	Compound	RT#1	RT#2	Resp#1	Resp#2	ng/ml	ng/ml
42)	L9 AR-1268-2	8.775	7.630	196236	545250	1.504	2.227 #
43)	L9 AR-1268-3	9.007	7.840	267437	157460	2.071	0.777 #
44)	L9 AR-1268-4	9.451	8.133	84490	278738	1.995	3.366 #
45)	L9 AR-1268-5	9.867	8.424	74275	341221	0.227	0.660 #

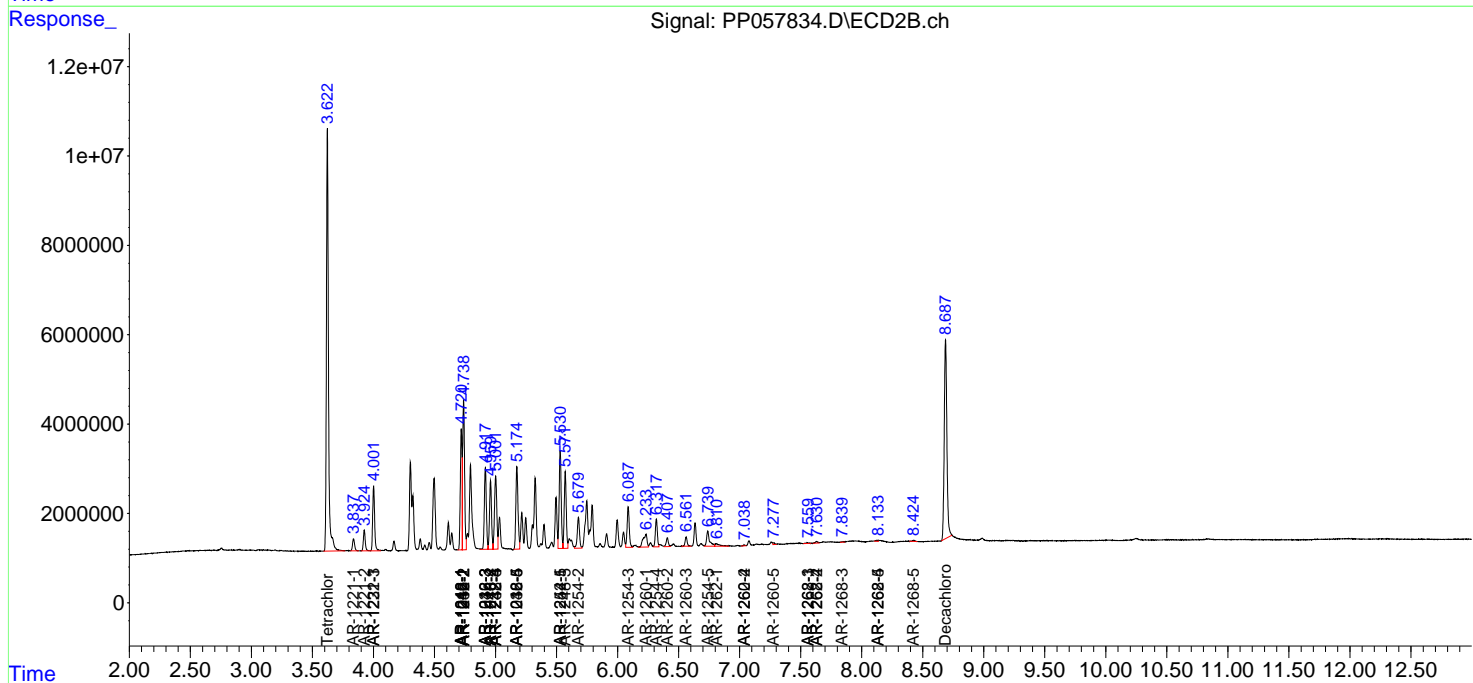
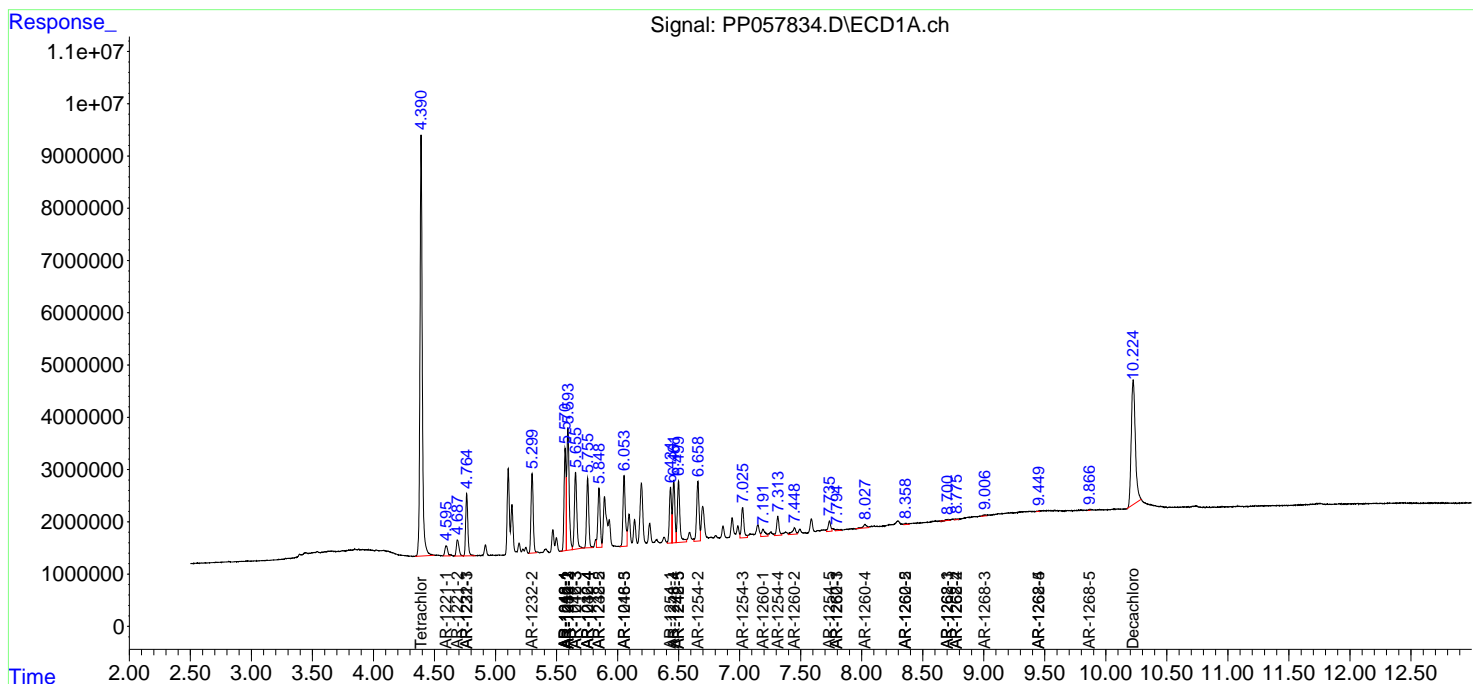
(f)=RT Delta > 1/2 Window (#)=Amounts differ by > 25% (m)=manual int.

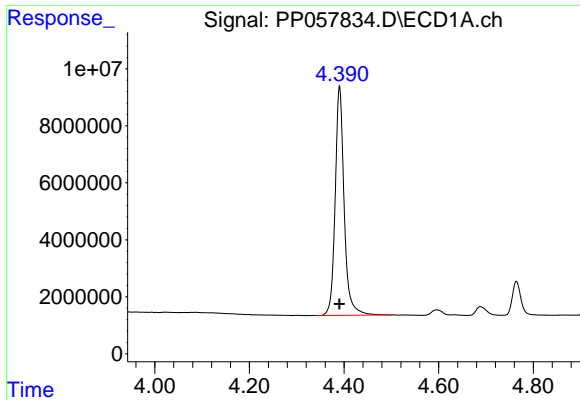
Data Path : Z:\pestpcbsrv\HPCHEM1\ECD\_P\Data\PP052423\  
 Data File : PP057834.D  
 Signal(s) : Signal #1: ECD1A.ch Signal #2: ECD2B.ch  
 Acq On : 24 May 2023 13:02  
 Operator : YP\AJ  
 Sample : AR1242CCC500  
 Misc :  
 ALS Vial : 4 Sample Multiplier: 1

Instrument :  
 ECD\_P  
 ClientSampleId :

Integration File signal 1: autoint1.e  
 Integration File signal 2: autoint2.e  
 Quant Time: May 24 21:22:42 2023  
 Quant Method : Z:\pestpcbsrv\HPCHEM1\ECD\_P\methods\PP050823.M  
 Quant Title : GC EXTRACTABLES  
 QLast Update : Mon May 08 19:18:05 2023  
 Response via : Initial Calibration  
 Integrator: ChemStation

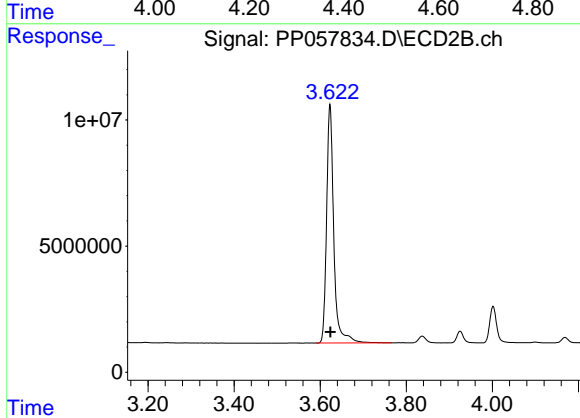
Volume Inj. : 2 µl  
 Signal #1 Phase : ZB-MR1 Signal #2 Phase: ZB-MR2  
 Signal #1 Info : 30Mx0.32mmx 0.50µ Signal #2 Info : 30M x 0.32mm x 0.25µm



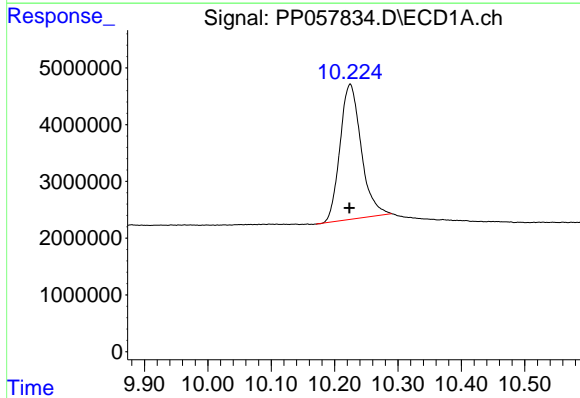


#1 Tetrachloro-m-xylene  
 R.T.: 4.391 min  
 Delta R.T.: 0.000 min  
 Response: 106077081  
 Conc: 48.35 ng/ml

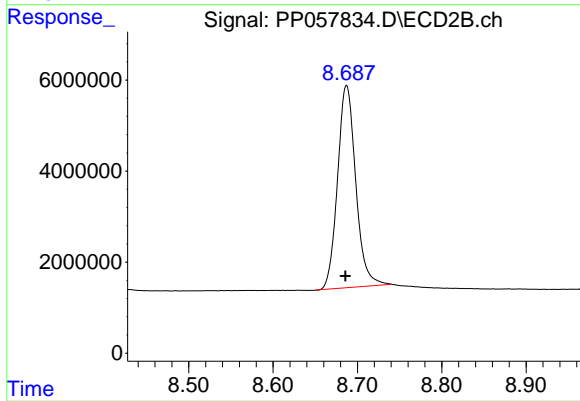
Instrument :  
 ECD\_P  
 ClientSampleId :



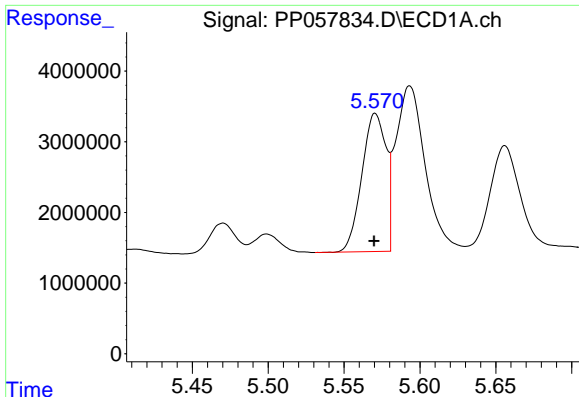
#1 Tetrachloro-m-xylene  
 R.T.: 3.623 min  
 Delta R.T.: 0.000 min  
 Response: 109779123  
 Conc: 48.40 ng/ml



#2 Decachlorobiphenyl  
 R.T.: 10.225 min  
 Delta R.T.: 0.001 min  
 Response: 55412769  
 Conc: 48.90 ng/ml



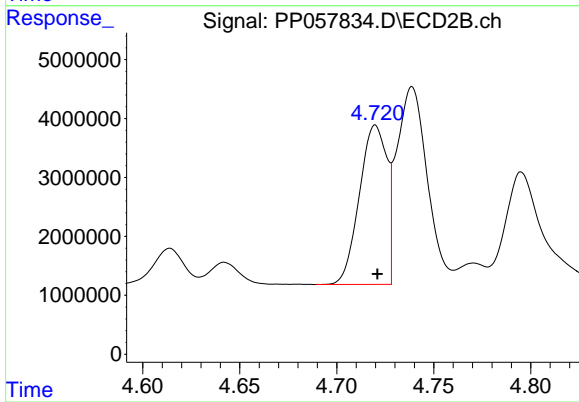
#2 Decachlorobiphenyl  
 R.T.: 8.687 min  
 Delta R.T.: 0.001 min  
 Response: 66646978  
 Conc: 42.46 ng/ml



#3 AR-1016-1

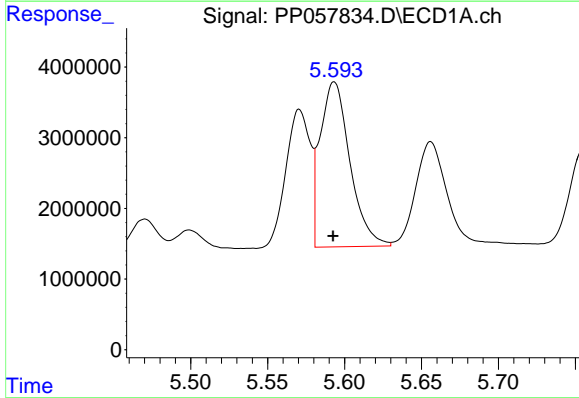
R.T.: 5.571 min  
 Delta R.T.: 0.000 min  
 Response: 21676184  
 Conc: 347.96 ng/ml

Instrument :  
 ECD\_P  
 ClientSampleId :



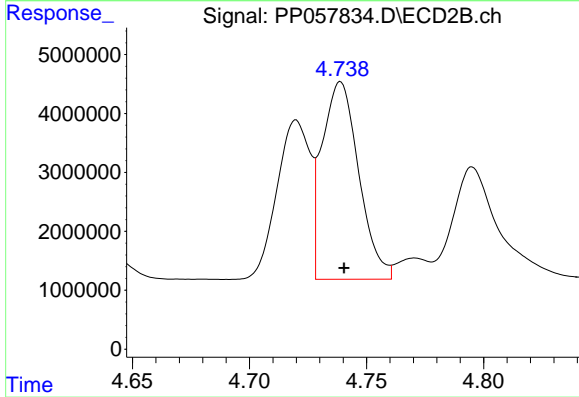
#3 AR-1016-1

R.T.: 4.720 min  
 Delta R.T.: -0.001 min  
 Response: 26625041  
 Conc: 357.29 ng/ml



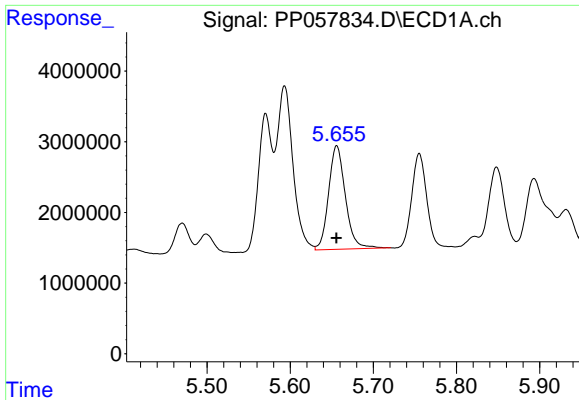
#4 AR-1016-2

R.T.: 5.593 min  
 Delta R.T.: 0.000 min  
 Response: 31511809  
 Conc: 350.50 ng/ml



#4 AR-1016-2

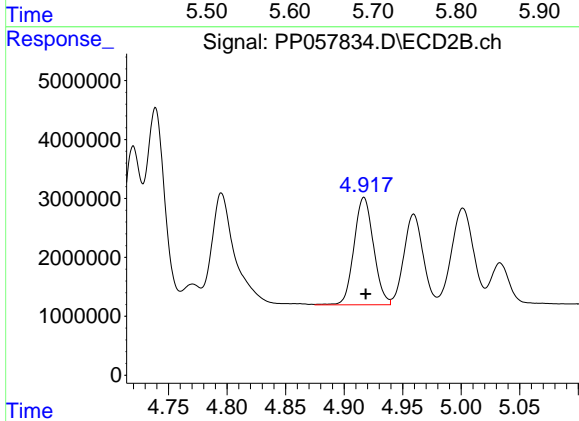
R.T.: 4.739 min  
 Delta R.T.: -0.002 min  
 Response: 36582100  
 Conc: 353.90 ng/ml



#5 AR-1016-3

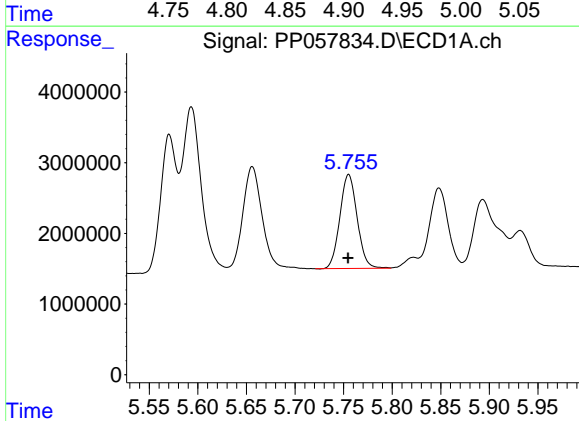
R.T.: 5.656 min  
 Delta R.T.: 0.000 min  
 Response: 20583855  
 Conc: 364.04 ng/ml

Instrument :  
 ECD\_P  
 ClientSampleId :



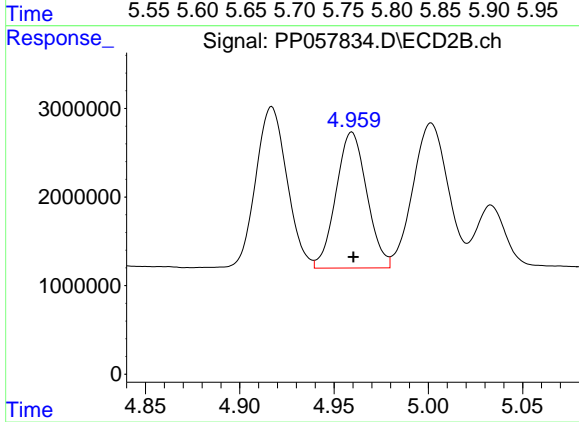
#5 AR-1016-3

R.T.: 4.917 min  
 Delta R.T.: -0.001 min  
 Response: 21143588  
 Conc: 358.63 ng/ml



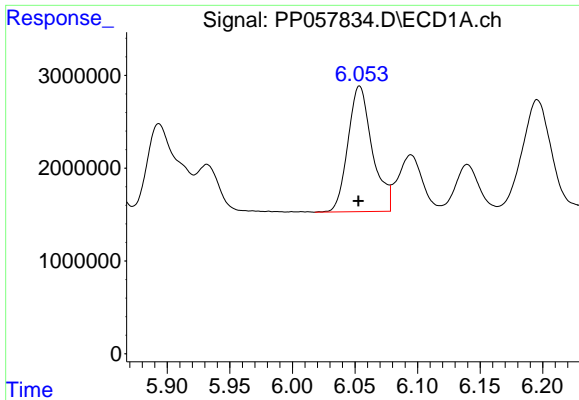
#6 AR-1016-4

R.T.: 5.755 min  
 Delta R.T.: 0.000 min  
 Response: 16447225  
 Conc: 356.14 ng/ml



#6 AR-1016-4

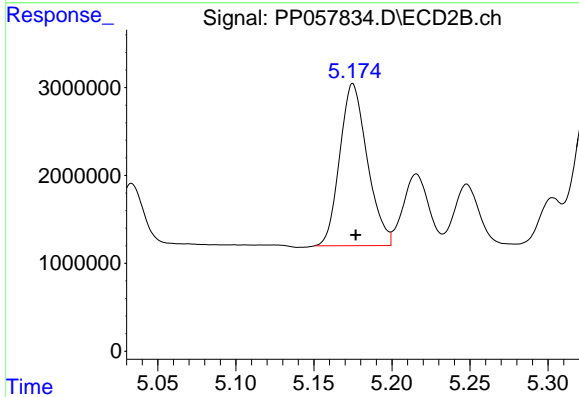
R.T.: 4.959 min  
 Delta R.T.: 0.000 min  
 Response: 17479860  
 Conc: 371.60 ng/ml



#7 AR-1016-5

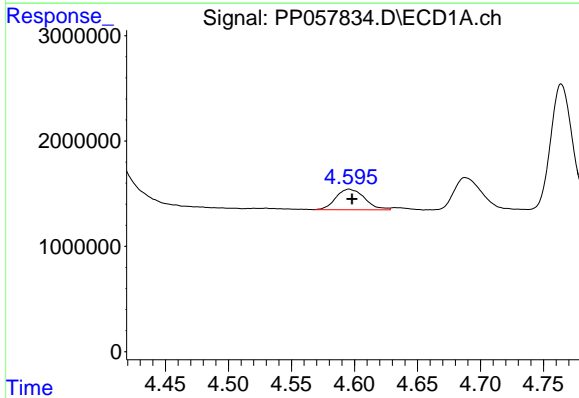
R.T.: 6.054 min  
 Delta R.T.: 0.000 min  
 Response: 18362916  
 Conc: 393.74 ng/ml

Instrument :  
 ECD\_P  
 ClientSampleId :



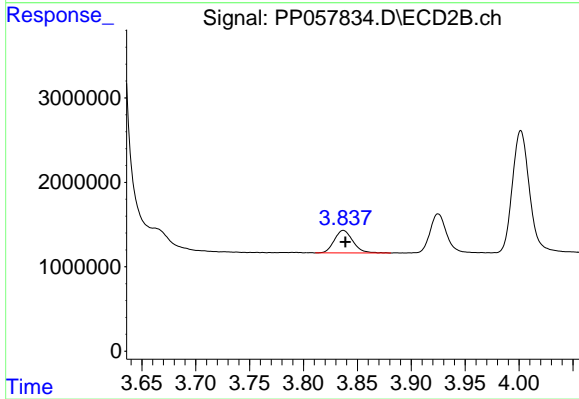
#7 AR-1016-5

R.T.: 5.175 min  
 Delta R.T.: -0.002 min  
 Response: 22627934  
 Conc: 381.10 ng/ml



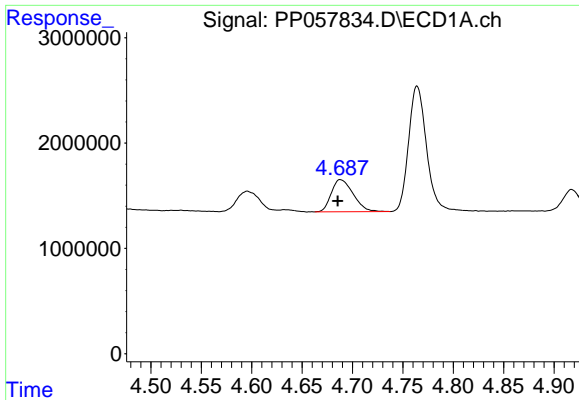
#8 AR-1221-1

R.T.: 4.596 min  
 Delta R.T.: -0.002 min  
 Response: 3097406  
 Conc: 107.04 ng/ml



#8 AR-1221-1

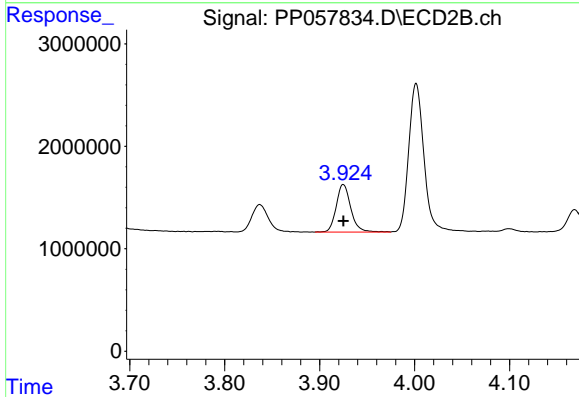
R.T.: 3.837 min  
 Delta R.T.: -0.002 min  
 Response: 3219518  
 Conc: 109.18 ng/ml



#9 AR-1221-2

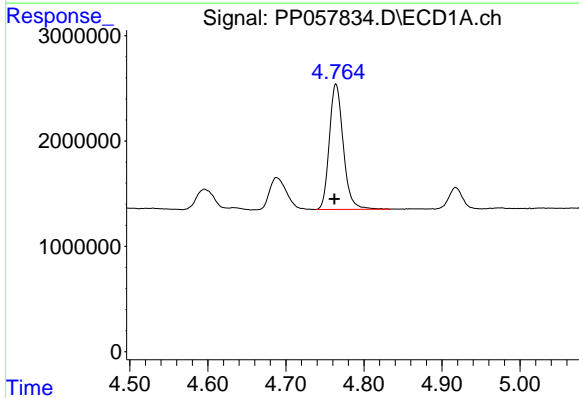
R.T.: 4.688 min  
 Delta R.T.: 0.003 min  
 Response: 4625110  
 Conc: 213.40 ng/ml

Instrument :  
 ECD\_P  
 ClientSampleId :



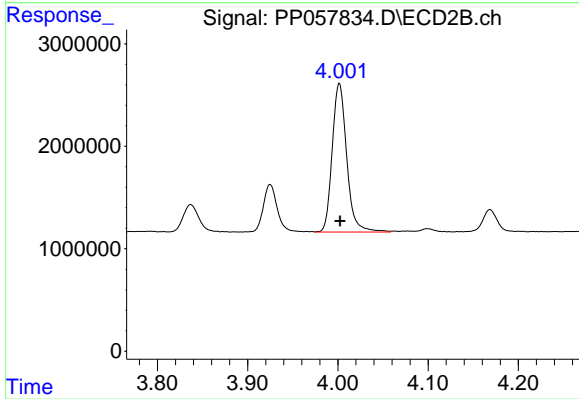
#9 AR-1221-2

R.T.: 3.925 min  
 Delta R.T.: 0.000 min  
 Response: 4971526  
 Conc: 223.19 ng/ml



#10 AR-1221-3

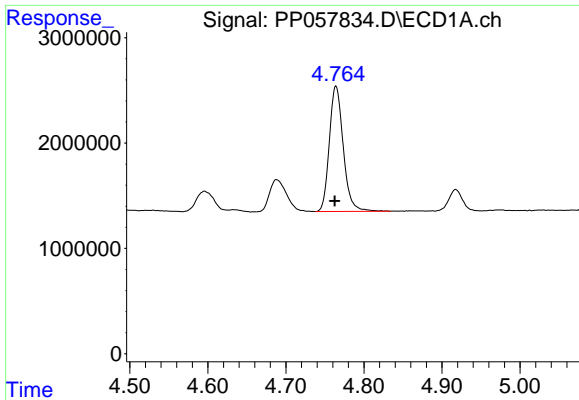
R.T.: 4.764 min  
 Delta R.T.: 0.002 min  
 Response: 14787415  
 Conc: 245.47 ng/ml



#10 AR-1221-3

R.T.: 4.002 min  
 Delta R.T.: 0.000 min  
 Response: 16208301  
 Conc: 254.39 ng/ml

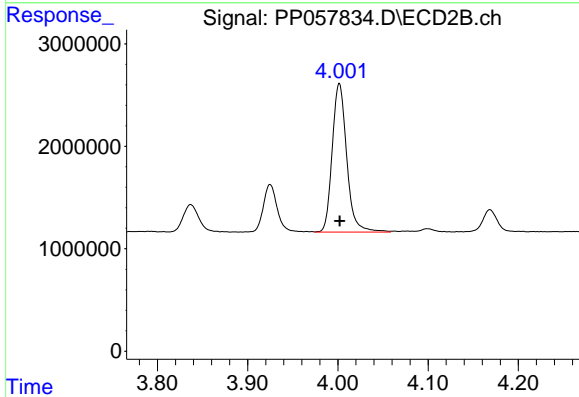




#11 AR-1232-1

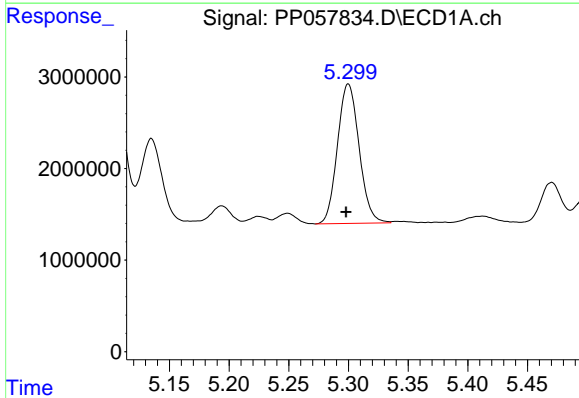
R.T.: 4.764 min  
 Delta R.T.: 0.002 min  
 Response: 14787415  
 Conc: 337.60 ng/ml

Instrument :  
 ECD\_P  
 ClientSampleId :



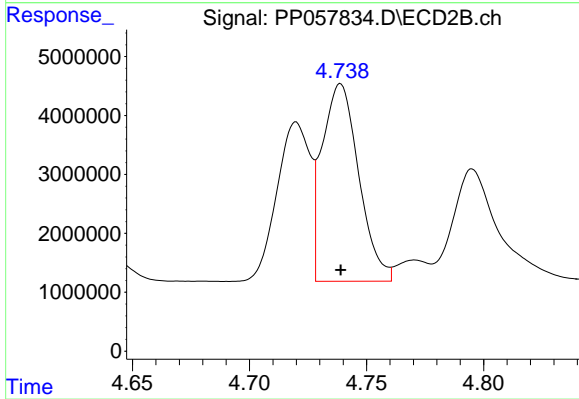
#11 AR-1232-1

R.T.: 4.002 min  
 Delta R.T.: 0.000 min  
 Response: 16208301  
 Conc: 351.22 ng/ml



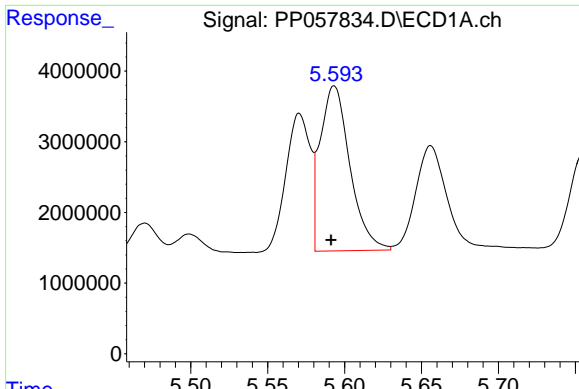
#12 AR-1232-2

R.T.: 5.300 min  
 Delta R.T.: 0.002 min  
 Response: 19223743  
 Conc: 737.14 ng/ml



#12 AR-1232-2

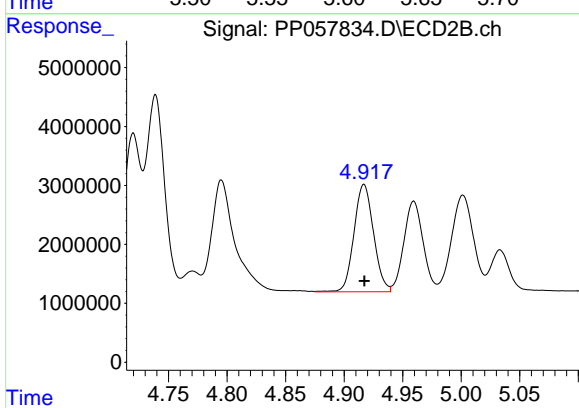
R.T.: 4.739 min  
 Delta R.T.: 0.000 min  
 Response: 36582100  
 Conc: 773.05 ng/ml



#13 AR-1232-3

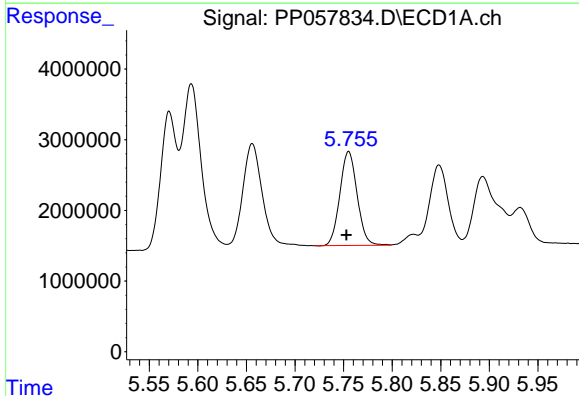
R.T.: 5.593 min  
Delta R.T.: 0.002 min  
Response: 31511809  
Conc: 772.10 ng/ml

Instrument :  
ECD\_P  
ClientSampleId :



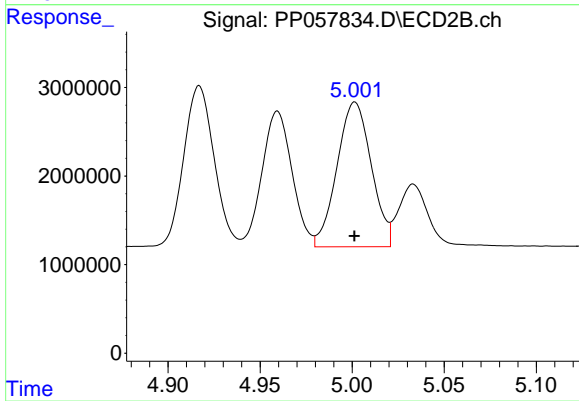
#13 AR-1232-3

R.T.: 4.917 min  
Delta R.T.: 0.000 min  
Response: 21143588  
Conc: 776.81 ng/ml



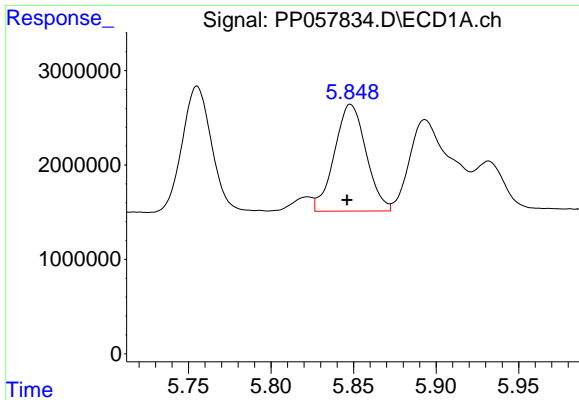
#14 AR-1232-4

R.T.: 5.755 min  
Delta R.T.: 0.002 min  
Response: 16447225  
Conc: 772.37 ng/ml



#14 AR-1232-4

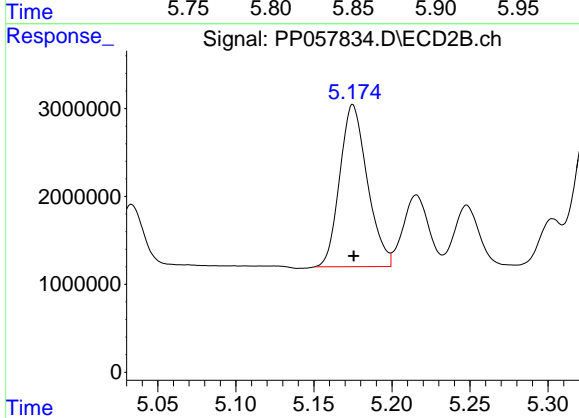
R.T.: 5.002 min  
Delta R.T.: 0.000 min  
Response: 21177957  
Conc: 868.71 ng/ml



#15 AR-1232-5

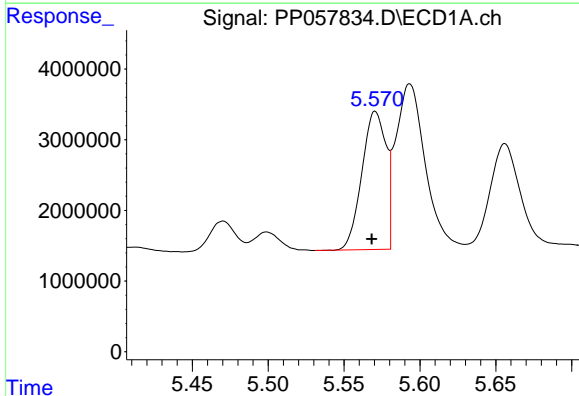
R.T.: 5.848 min  
 Delta R.T.: 0.002 min  
 Response: 15104688  
 Conc: 827.07 ng/ml

Instrument :  
 ECD\_P  
 ClientSampleId :



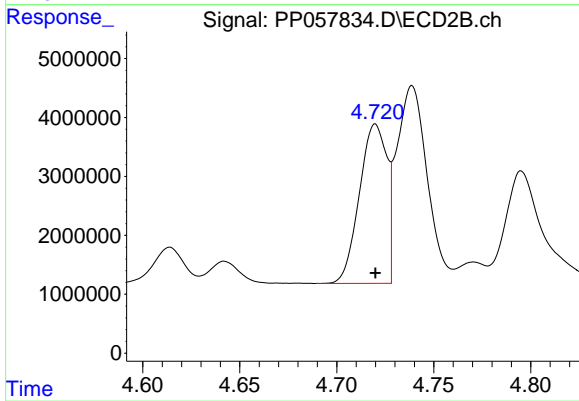
#15 AR-1232-5

R.T.: 5.175 min  
 Delta R.T.: 0.000 min  
 Response: 22627934  
 Conc: 818.30 ng/ml



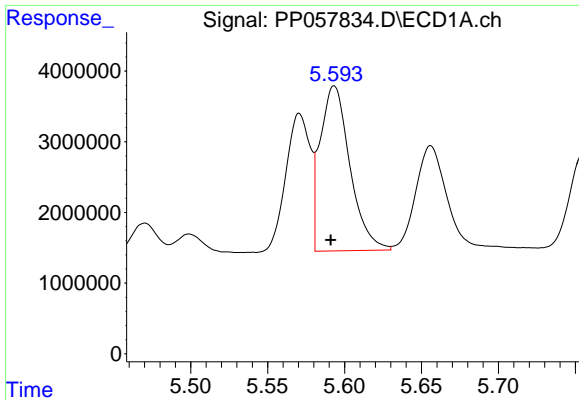
#16 AR-1242-1

R.T.: 5.571 min  
 Delta R.T.: 0.002 min  
 Response: 21676184  
 Conc: 455.02 ng/ml



#16 AR-1242-1

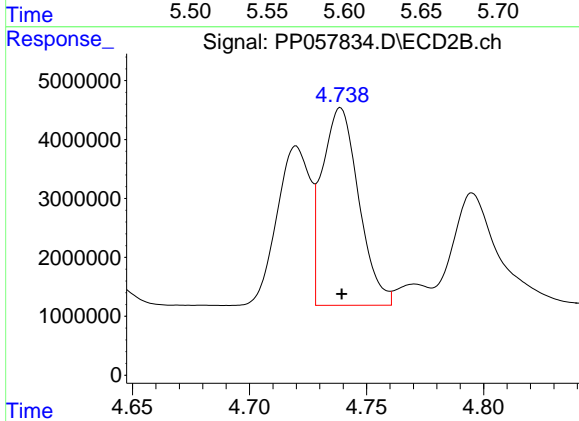
R.T.: 4.720 min  
 Delta R.T.: 0.000 min  
 Response: 26625041  
 Conc: 457.39 ng/ml



#17 AR-1242-2

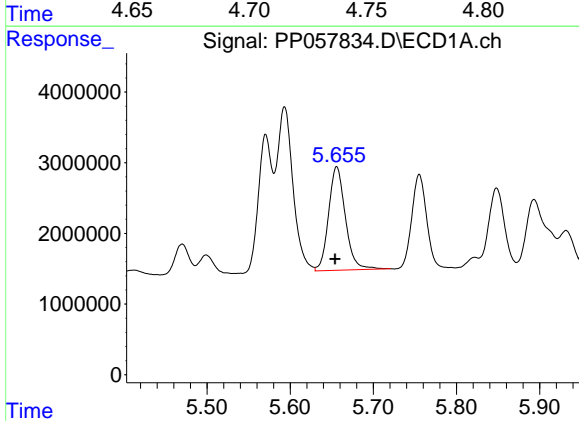
R.T.: 5.593 min  
 Delta R.T.: 0.002 min  
 Response: 31511809  
 Conc: 460.79 ng/ml

Instrument :  
 ECD\_P  
 ClientSampleId :



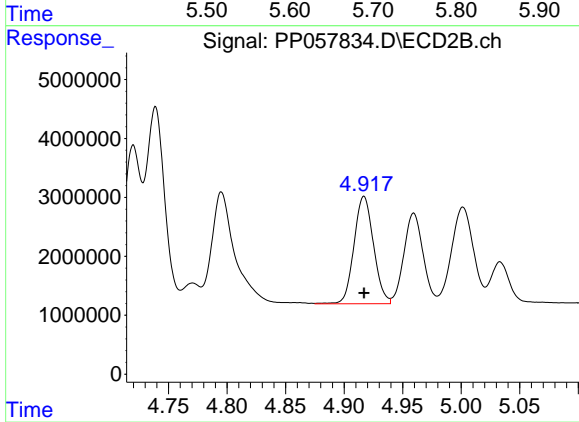
#17 AR-1242-2

R.T.: 4.739 min  
 Delta R.T.: 0.000 min  
 Response: 36582100  
 Conc: 458.32 ng/ml



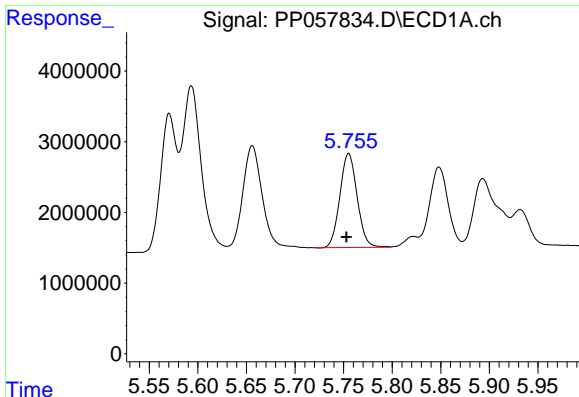
#18 AR-1242-3

R.T.: 5.656 min  
 Delta R.T.: 0.002 min  
 Response: 20583855  
 Conc: 472.75 ng/ml



#18 AR-1242-3

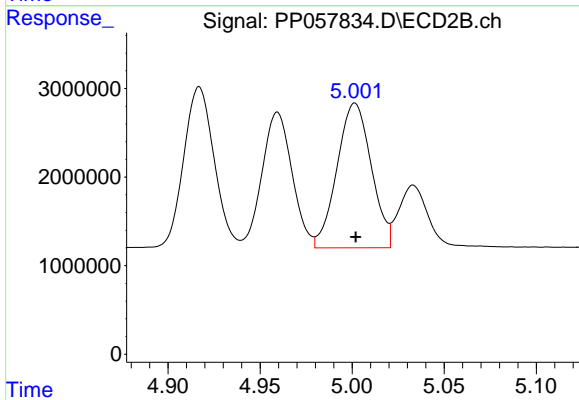
R.T.: 4.917 min  
 Delta R.T.: 0.000 min  
 Response: 21143588  
 Conc: 450.84 ng/ml



#19 AR-1242-4

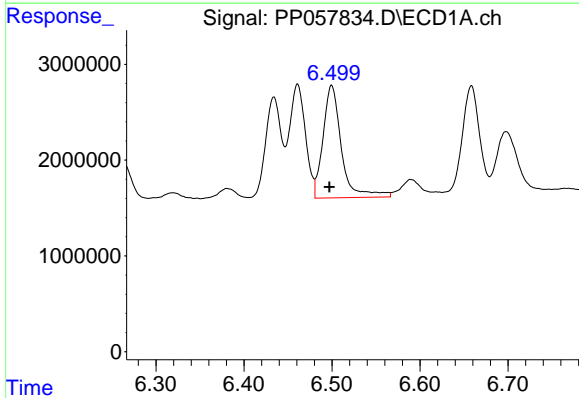
R.T.: 5.755 min  
 Delta R.T.: 0.002 min  
 Response: 16447225  
 Conc: 466.76 ng/ml

Instrument :  
 ECD\_P  
 ClientSampleId :



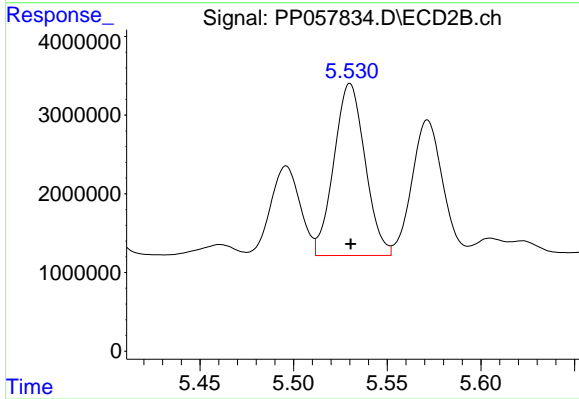
#19 AR-1242-4

R.T.: 5.002 min  
 Delta R.T.: 0.000 min  
 Response: 21177957  
 Conc: 456.42 ng/ml



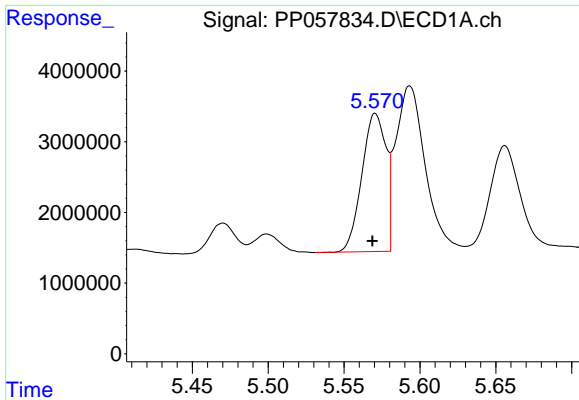
#20 AR-1242-5

R.T.: 6.500 min  
 Delta R.T.: 0.003 min  
 Response: 17052119  
 Conc: 526.28 ng/ml



#20 AR-1242-5

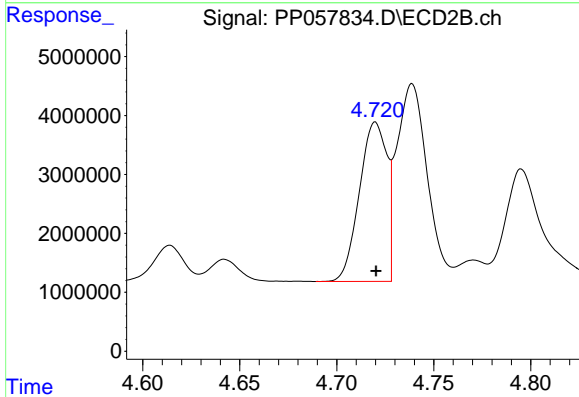
R.T.: 5.530 min  
 Delta R.T.: 0.000 min  
 Response: 25283894  
 Conc: 452.23 ng/ml



#21 AR-1248-1

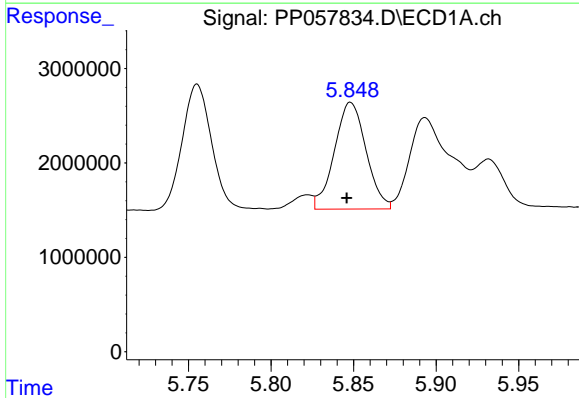
R.T.: 5.571 min  
 Delta R.T.: 0.002 min  
 Response: 21676184  
 Conc: 515.08 ng/ml

Instrument :  
 ECD\_P  
 ClientSampleId :



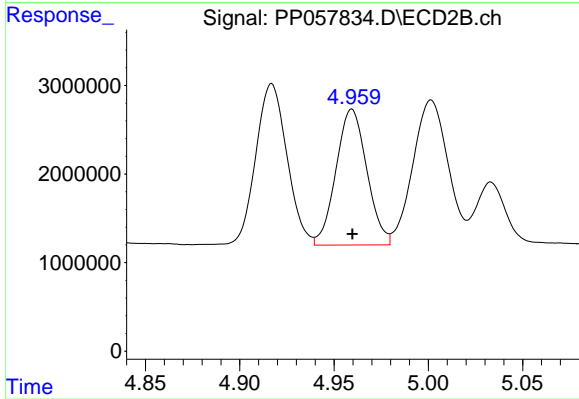
#21 AR-1248-1

R.T.: 4.720 min  
 Delta R.T.: 0.000 min  
 Response: 26625041  
 Conc: 517.40 ng/ml



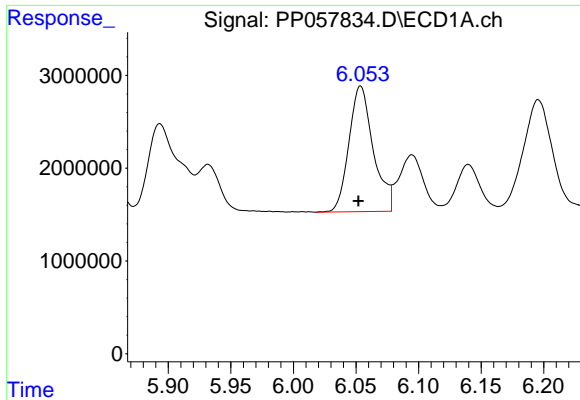
#22 AR-1248-2

R.T.: 5.848 min  
 Delta R.T.: 0.002 min  
 Response: 15104688  
 Conc: 231.67 ng/ml



#22 AR-1248-2

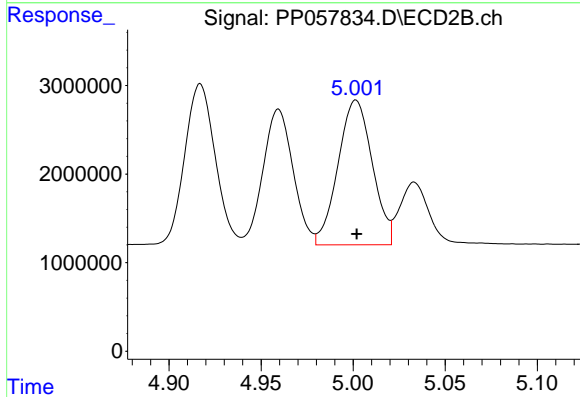
R.T.: 4.959 min  
 Delta R.T.: 0.000 min  
 Response: 17479860  
 Conc: 243.44 ng/ml



#23 AR-1248-3

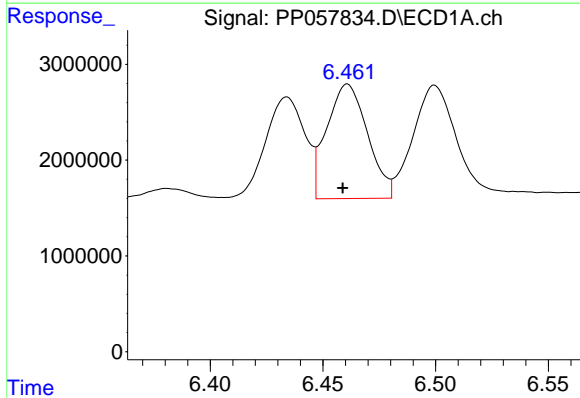
R.T.: 6.054 min  
 Delta R.T.: 0.002 min  
 Response: 18362916  
 Conc: 264.44 ng/ml

Instrument :  
 ECD\_P  
 ClientSampleId :



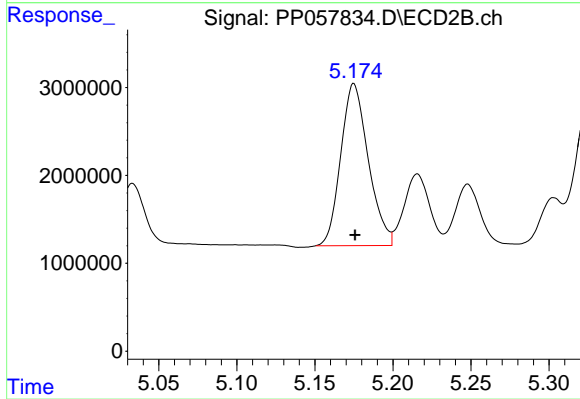
#23 AR-1248-3

R.T.: 5.002 min  
 Delta R.T.: 0.000 min  
 Response: 21177957  
 Conc: 279.91 ng/ml



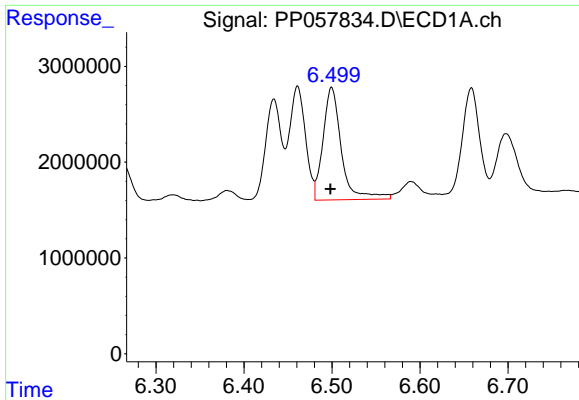
#24 AR-1248-4

R.T.: 6.461 min  
 Delta R.T.: 0.002 min  
 Response: 15064861  
 Conc: 235.72 ng/ml



#24 AR-1248-4

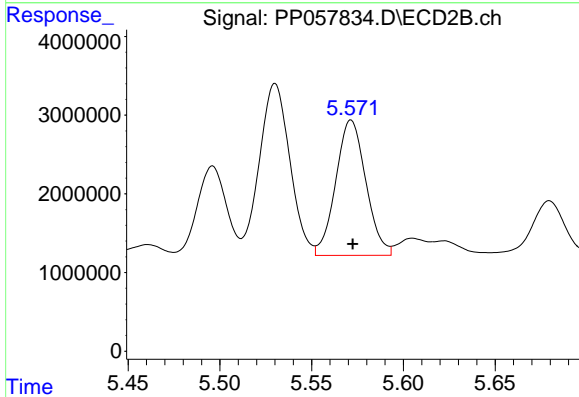
R.T.: 5.175 min  
 Delta R.T.: 0.000 min  
 Response: 22627934  
 Conc: 253.67 ng/ml



#25 AR-1248-5

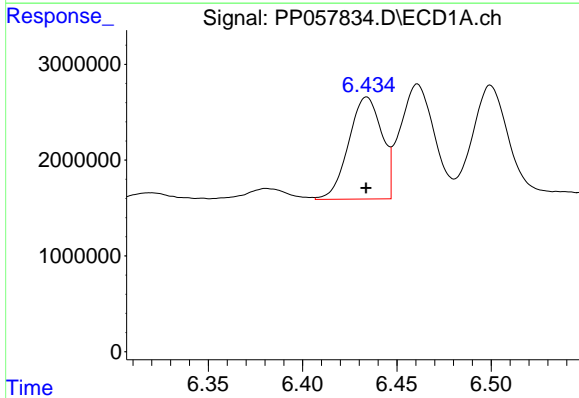
R.T.: 6.500 min  
 Delta R.T.: 0.001 min  
 Response: 17052119  
 Conc: 265.78 ng/ml

Instrument :  
 ECD\_P  
 ClientSampleId :



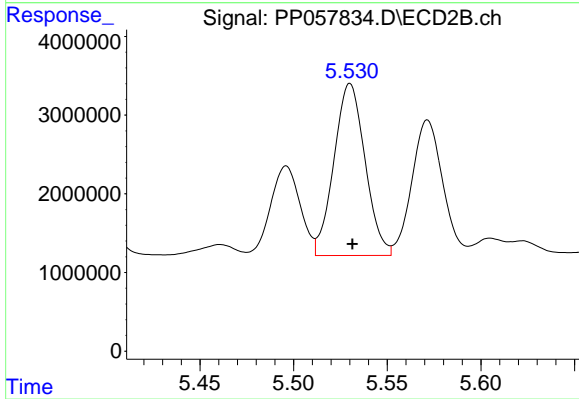
#25 AR-1248-5

R.T.: 5.572 min  
 Delta R.T.: 0.000 min  
 Response: 19652783  
 Conc: 236.38 ng/ml



#26 AR-1254-1

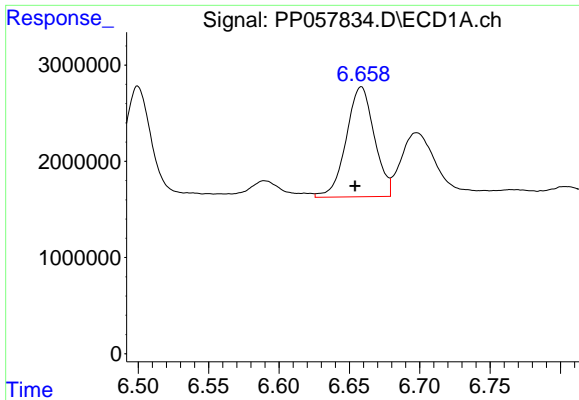
R.T.: 6.434 min  
 Delta R.T.: 0.000 min  
 Response: 13023179  
 Conc: 194.03 ng/ml



#26 AR-1254-1

R.T.: 5.530 min  
 Delta R.T.: -0.001 min  
 Response: 25283894  
 Conc: 226.44 ng/ml

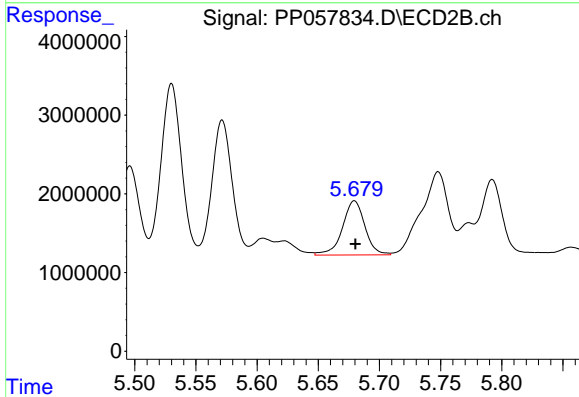




#27 AR-1254-2

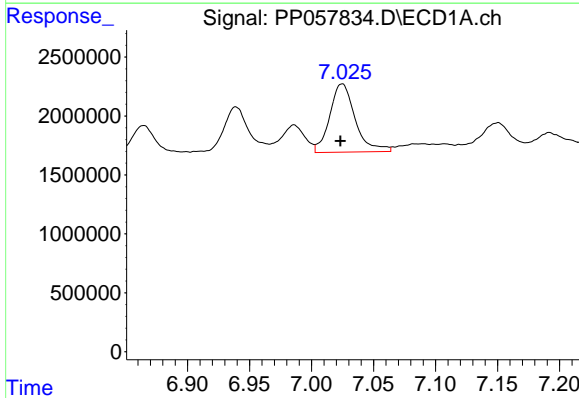
R.T.: 6.658 min  
 Delta R.T.: 0.004 min  
 Response: 15919718  
 Conc: 168.29 ng/ml

Instrument :  
 ECD\_P  
 ClientSampleId :



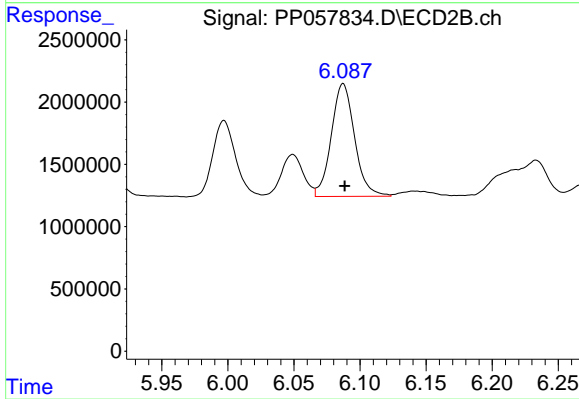
#27 AR-1254-2

R.T.: 5.680 min  
 Delta R.T.: 0.000 min  
 Response: 8780173  
 Conc: 87.97 ng/ml



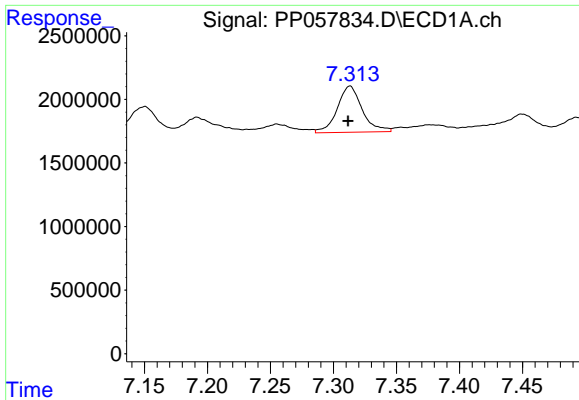
#28 AR-1254-3

R.T.: 7.025 min  
 Delta R.T.: 0.001 min  
 Response: 8301114  
 Conc: 91.13 ng/ml



#28 AR-1254-3

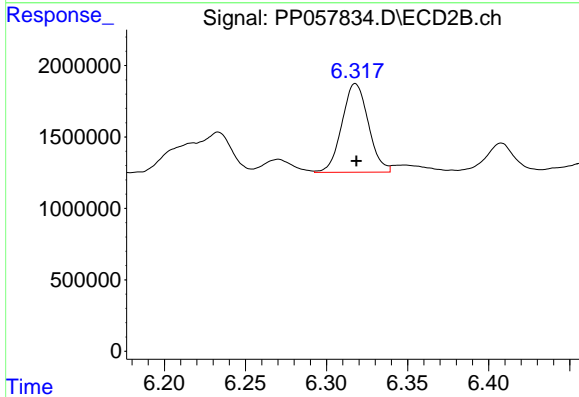
R.T.: 6.087 min  
 Delta R.T.: -0.001 min  
 Response: 11121301  
 Conc: 71.08 ng/ml



#29 AR-1254-4

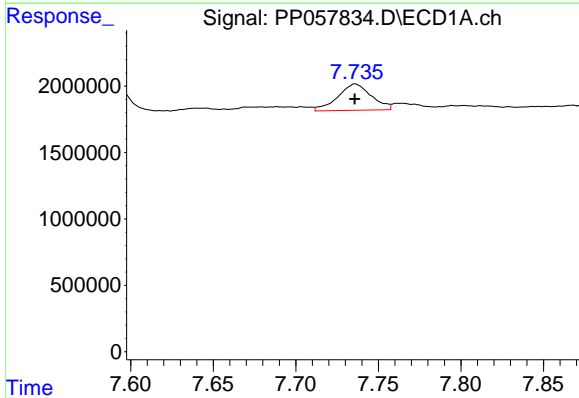
R.T.: 7.313 min  
 Delta R.T.: 0.002 min  
 Response: 5018369  
 Conc: 84.25 ng/ml

Instrument :  
 ECD\_P  
 ClientSampleId :



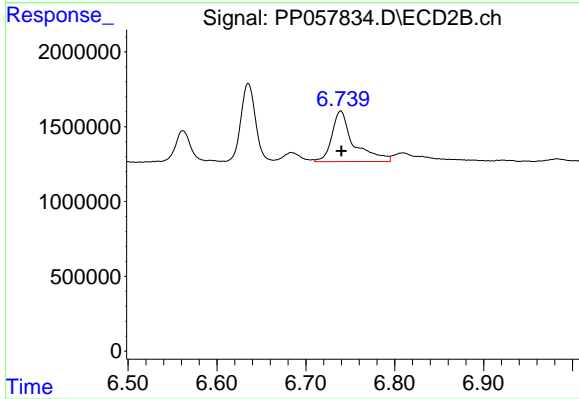
#29 AR-1254-4

R.T.: 6.318 min  
 Delta R.T.: 0.000 min  
 Response: 7050924  
 Conc: 76.43 ng/ml



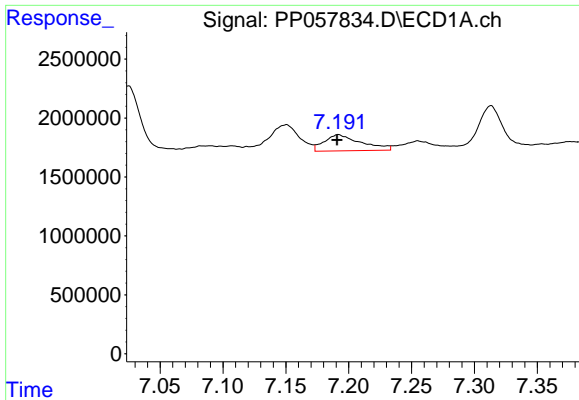
#30 AR-1254-5

R.T.: 7.736 min  
 Delta R.T.: 0.000 min  
 Response: 2808543  
 Conc: 40.91 ng/ml



#30 AR-1254-5

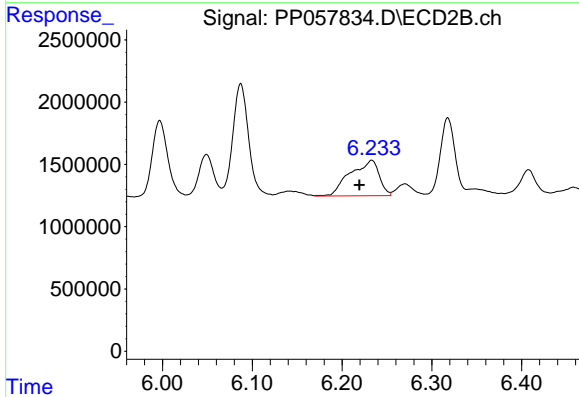
R.T.: 6.739 min  
 Delta R.T.: 0.000 min  
 Response: 5723073  
 Conc: 39.53 ng/ml



#31 AR-1260-1

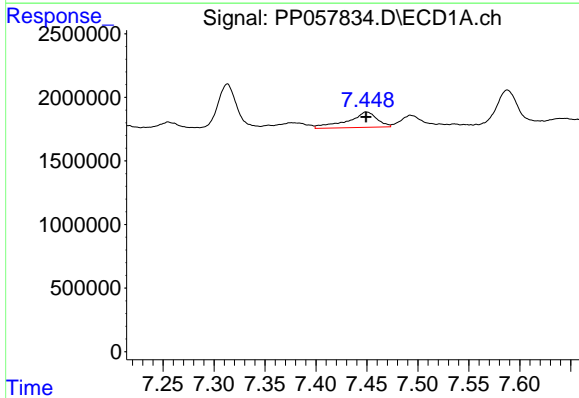
R.T.: 7.192 min  
 Delta R.T.: 0.000 min  
 Response: 2811245  
 Conc: 35.63 ng/ml

Instrument :  
 ECD\_P  
 ClientSampleId :



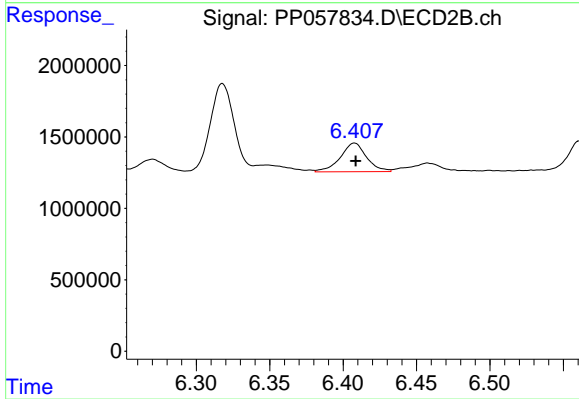
#31 AR-1260-1

R.T.: 6.233 min  
 Delta R.T.: 0.014 min  
 Response: 6374922  
 Conc: 57.98 ng/ml



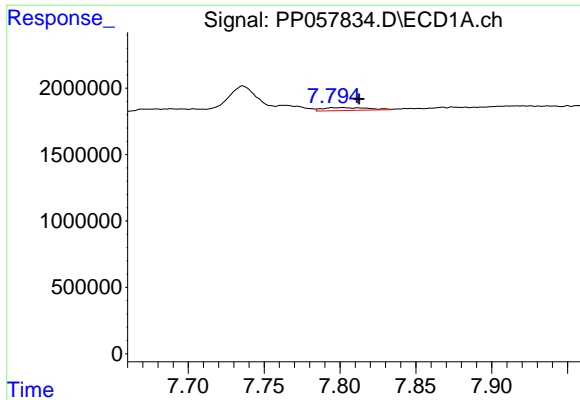
#32 AR-1260-2

R.T.: 7.450 min  
 Delta R.T.: 0.000 min  
 Response: 2452226  
 Conc: 30.61 ng/ml



#32 AR-1260-2

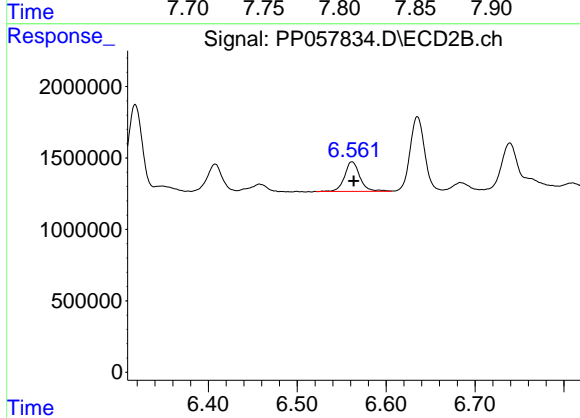
R.T.: 6.408 min  
 Delta R.T.: 0.000 min  
 Response: 2487763  
 Conc: 19.57 ng/ml



#33 AR-1260-3

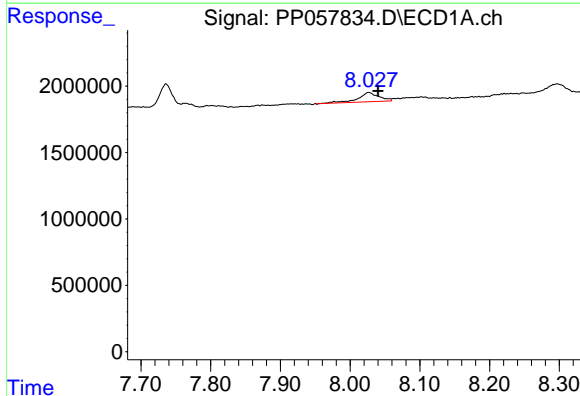
R.T.: 7.802 min  
 Delta R.T.: -0.010 min  
 Response: 449953  
 Conc: 7.90 ng/ml

Instrument :  
 ECD\_P  
 ClientSampleId :



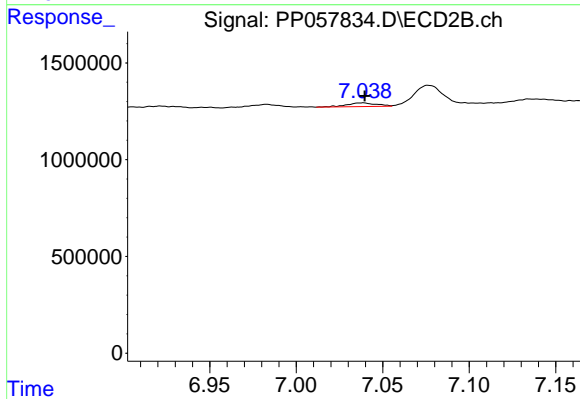
#33 AR-1260-3

R.T.: 6.562 min  
 Delta R.T.: -0.002 min  
 Response: 2482207  
 Conc: 20.24 ng/ml



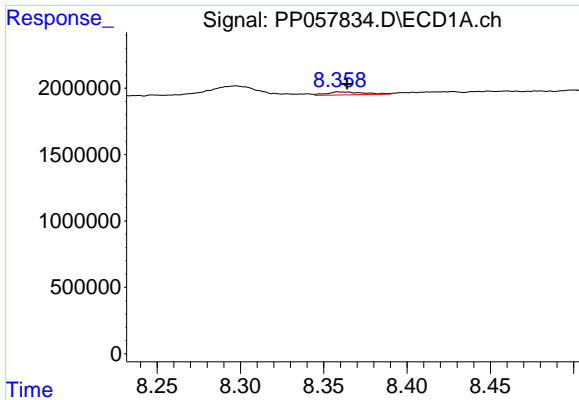
#34 AR-1260-4

R.T.: 8.027 min  
 Delta R.T.: -0.013 min  
 Response: 1418134  
 Conc: 21.34 ng/ml



#34 AR-1260-4

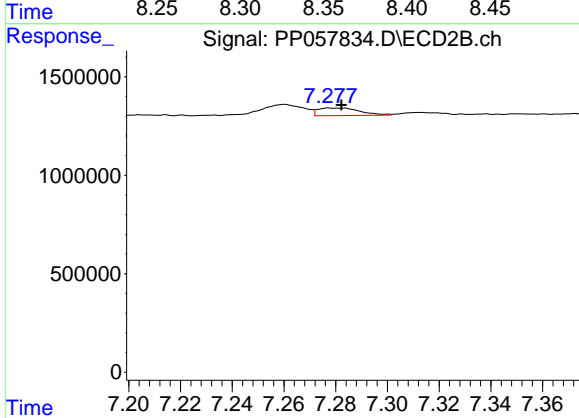
R.T.: 7.038 min  
 Delta R.T.: -0.002 min  
 Response: 222072  
 Conc: 2.54 ng/ml



#35 AR-1260-5

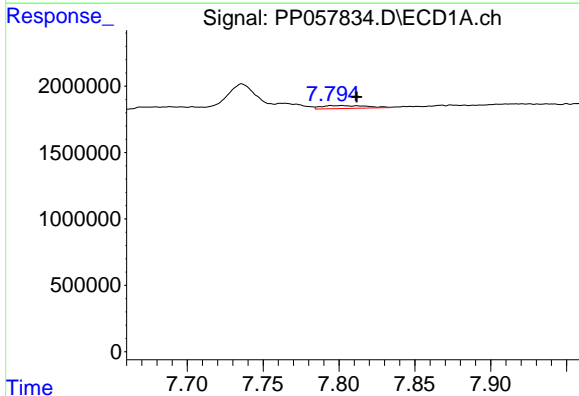
R.T.: 8.359 min  
 Delta R.T.: -0.005 min  
 Response: 344662  
 Conc: 3.21 ng/ml

Instrument :  
 ECD\_P  
 ClientSampleId :



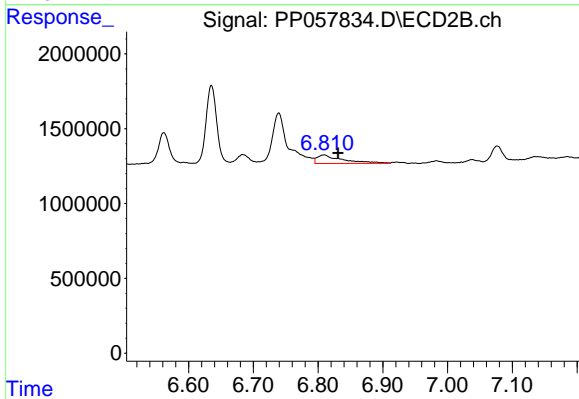
#35 AR-1260-5

R.T.: 7.278 min  
 Delta R.T.: -0.004 min  
 Response: 435291  
 Conc: 2.36 ng/ml



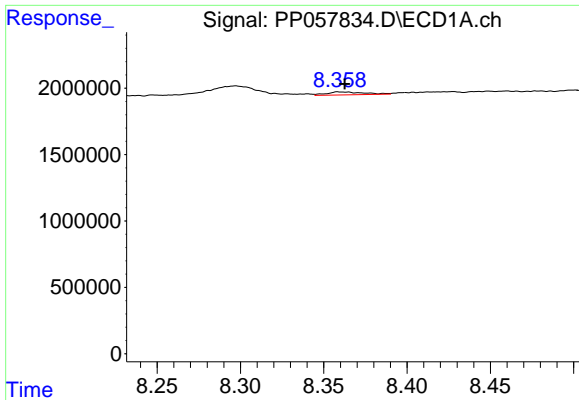
#36 AR-1262-1

R.T.: 7.802 min  
 Delta R.T.: -0.010 min  
 Response: 449953  
 Conc: 5.23 ng/ml



#36 AR-1262-1

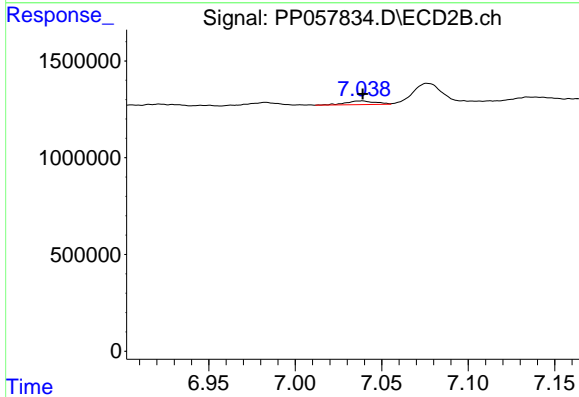
R.T.: 6.809 min  
 Delta R.T.: -0.021 min  
 Response: 1570508  
 Conc: 24.72 ng/ml



#37 AR-1262-2

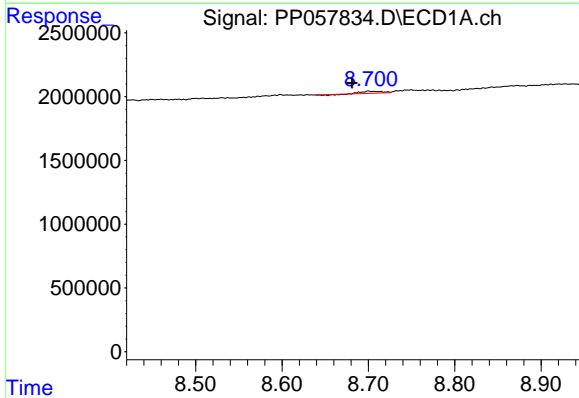
R.T.: 8.359 min  
 Delta R.T.: -0.004 min  
 Response: 344662  
 Conc: 2.83 ng/ml

Instrument :  
 ECD\_P  
 ClientSampleId :



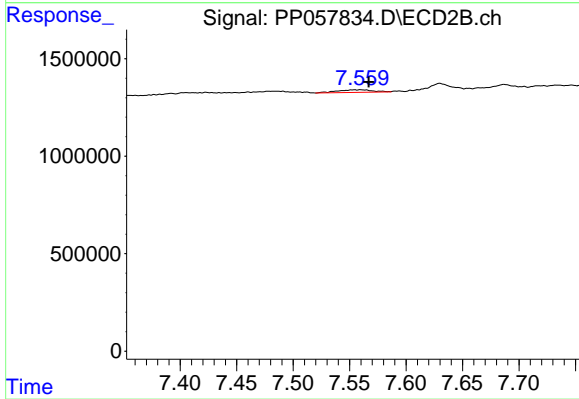
#37 AR-1262-2

R.T.: 7.038 min  
 Delta R.T.: -0.001 min  
 Response: 222072  
 Conc: 1.79 ng/ml



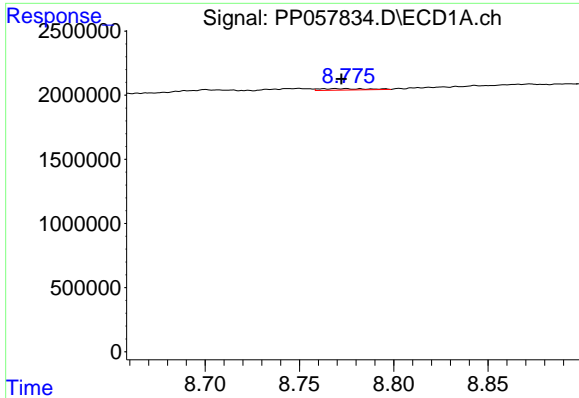
#38 AR-1262-3

R.T.: 8.700 min  
 Delta R.T.: 0.019 min  
 Response: 240664  
 Conc: 2.77 ng/ml



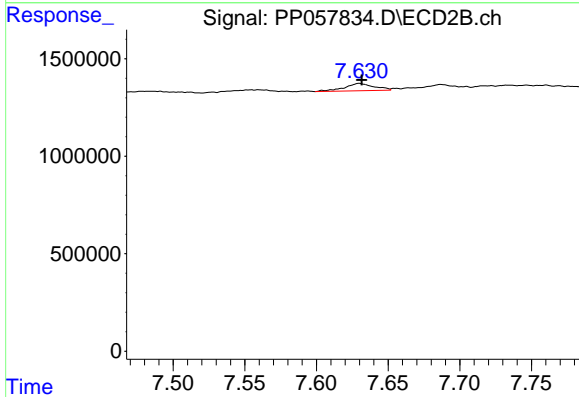
#38 AR-1262-3

R.T.: 7.560 min  
 Delta R.T.: -0.007 min  
 Response: 287113  
 Conc: 3.06 ng/ml

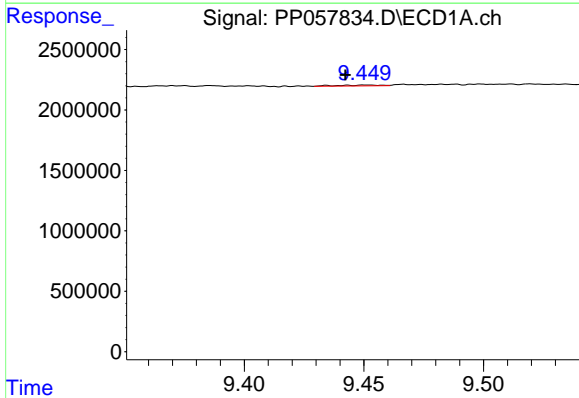


#39 AR-1262-4  
 R.T.: 8.775 min  
 Delta R.T.: 0.003 min  
 Response: 196236  
 Conc: 2.93 ng/ml

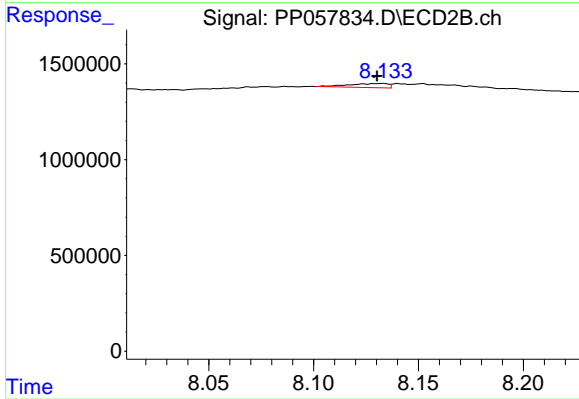
Instrument :  
 ECD\_P  
 ClientSampleId :



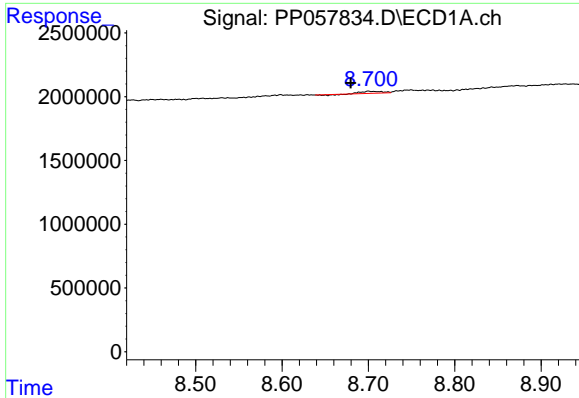
#39 AR-1262-4  
 R.T.: 7.630 min  
 Delta R.T.: -0.002 min  
 Response: 545250  
 Conc: 3.20 ng/ml



#40 AR-1262-5  
 R.T.: 9.451 min  
 Delta R.T.: 0.009 min  
 Response: 84490  
 Conc: 2.21 ng/ml

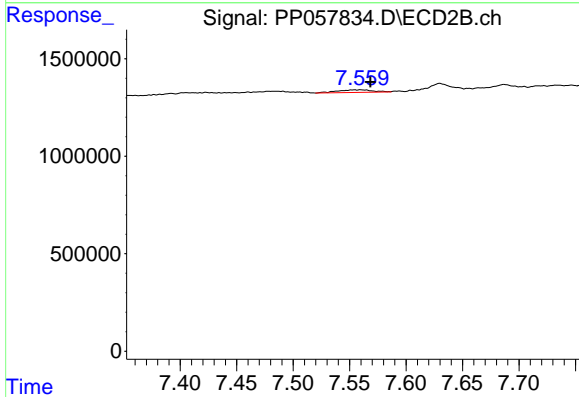


#40 AR-1262-5  
 R.T.: 8.133 min  
 Delta R.T.: 0.002 min  
 Response: 278738  
 Conc: 3.79 ng/ml

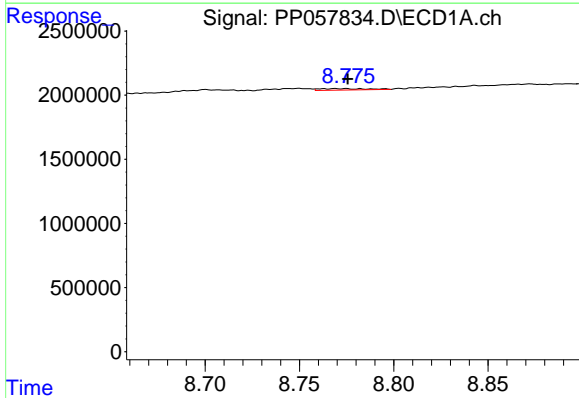


#41 AR-1268-1  
 R.T.: 8.700 min  
 Delta R.T.: 0.020 min  
 Response: 240664  
 Conc: 1.55 ng/ml

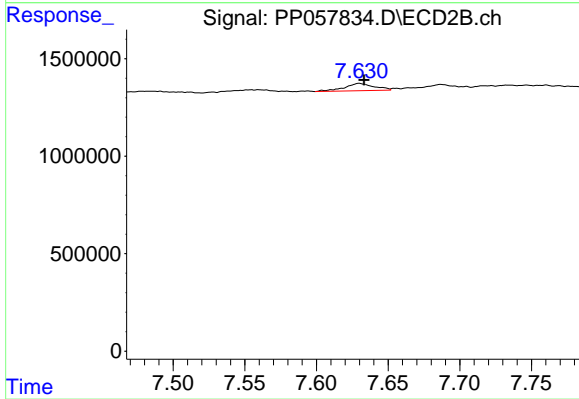
Instrument :  
 ECD\_P  
 ClientSampleId :



#41 AR-1268-1  
 R.T.: 7.560 min  
 Delta R.T.: -0.009 min  
 Response: 287113  
 Conc: 1.09 ng/ml

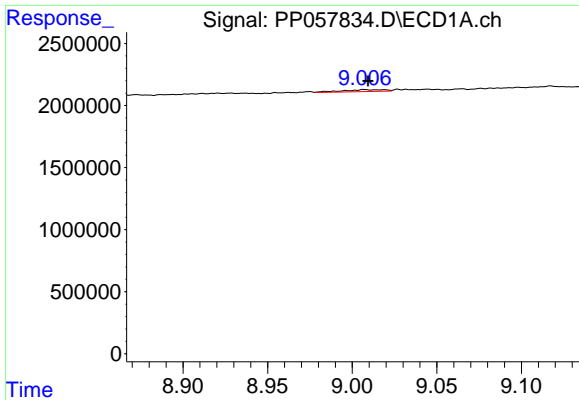


#42 AR-1268-2  
 R.T.: 8.775 min  
 Delta R.T.: 0.000 min  
 Response: 196236  
 Conc: 1.50 ng/ml



#42 AR-1268-2  
 R.T.: 7.630 min  
 Delta R.T.: -0.003 min  
 Response: 545250  
 Conc: 2.23 ng/ml

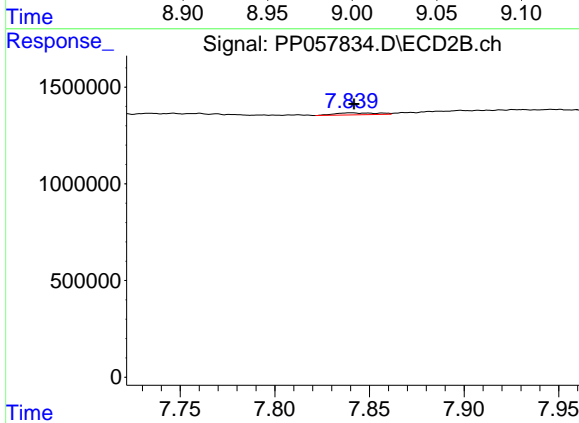




#43 AR-1268-3

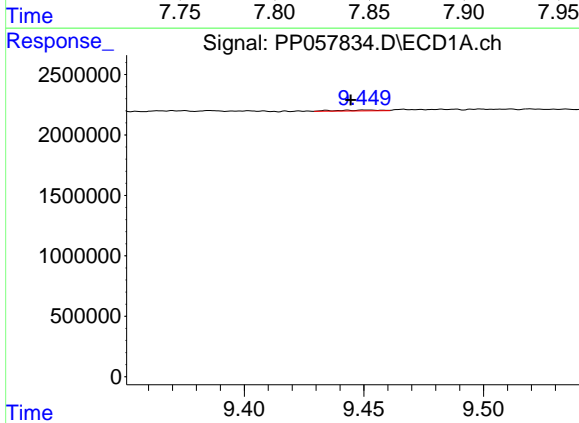
R.T.: 9.007 min  
 Delta R.T.: -0.002 min  
 Response: 267437  
 Conc: 2.07 ng/ml

Instrument :  
 ECD\_P  
 ClientSampleId :



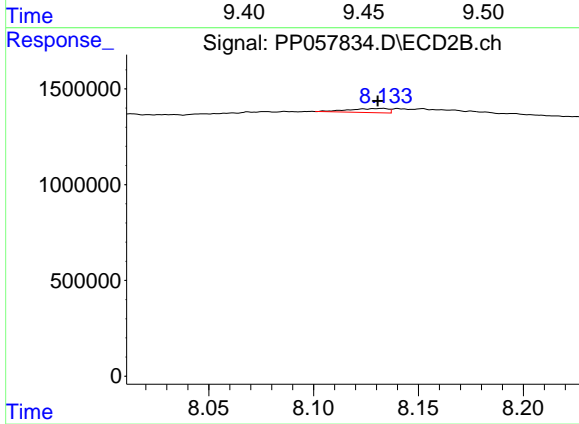
#43 AR-1268-3

R.T.: 7.840 min  
 Delta R.T.: -0.002 min  
 Response: 157460  
 Conc: 0.78 ng/ml



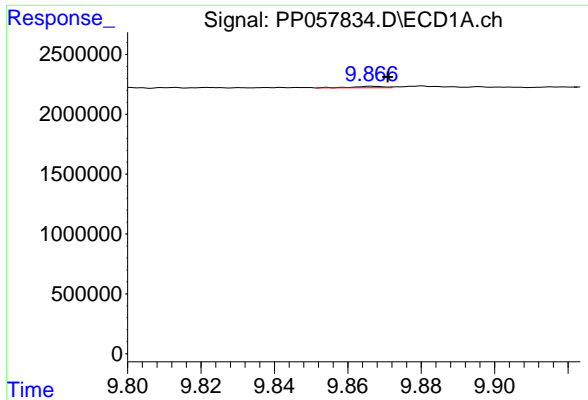
#44 AR-1268-4

R.T.: 9.451 min  
 Delta R.T.: 0.006 min  
 Response: 84490  
 Conc: 2.00 ng/ml



#44 AR-1268-4

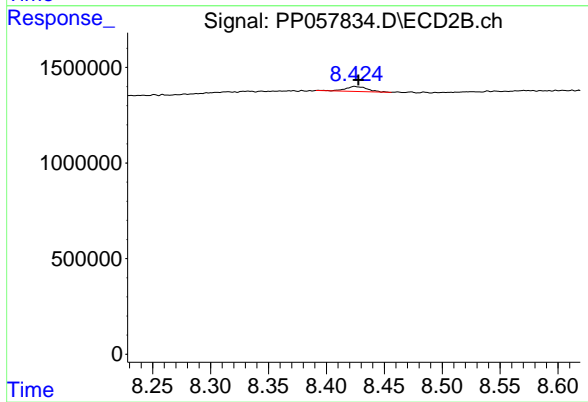
R.T.: 8.133 min  
 Delta R.T.: 0.002 min  
 Response: 278738  
 Conc: 3.37 ng/ml



#45 AR-1268-5

R.T.: 9.867 min  
Delta R.T.: -0.004 min  
Response: 74275  
Conc: 0.23 ng/ml

Instrument :  
ECD\_P  
ClientSampleId :



#45 AR-1268-5

R.T.: 8.424 min  
Delta R.T.: -0.003 min  
Response: 341221  
Conc: 0.66 ng/ml