

Data Path : Z:\pestpcbsrv\HPCHEM1\ECD\_P\Data\PP052423\  
 Data File : PP057827.D  
 Signal(s) : Signal #1: ECD1A.ch Signal #2: ECD2B.ch  
 Acq On : 24 May 2023 09:51  
 Operator : YP\AJ  
 Sample : 02885-01DL 2X  
 Misc :  
 ALS Vial : 7 Sample Multiplier: 1

Instrument :  
 ECD\_P  
 ClientSampleId :  
 40232DL

Integration File signal 1: autoint1.e  
 Integration File signal 2: autoint2.e  
 Quant Time: May 24 21:19:22 2023  
 Quant Method : Z:\pestpcbsrv\HPCHEM1\ECD\_P\methods\PP050823.M  
 Quant Title : GC EXTRACTABLES  
 QLast Update : Mon May 08 19:18:05 2023  
 Response via : Initial Calibration  
 Integrator: ChemStation

Volume Inj. : 2 µl  
 Signal #1 Phase : ZB-MR1 Signal #2 Phase: ZB-MR2  
 Signal #1 Info : 30Mx0.32mmx 0.50µ Signal #2 Info : 30M x 0.32mm x 0.25µm

Compound	RT#1	RT#2	Resp#1	Resp#2	ng/ml	ng/ml
-----						
System Monitoring Compounds						
1) SA Tetrachlo...	4.383	3.621	29075434	28696091	13.253	12.651
2) SA Decachlor...	10.207	8.681	16651322	21025561	14.693	13.394
Target Compounds						
26) L6 AR-1254-1	6.427	5.527	124.0E6	171.7E6	1847.619	1537.460
27) L6 AR-1254-2	6.647	5.676	130.0E6	102.5E6	1373.819	1027.052 #
28) L6 AR-1254-3	7.016	6.084	63800757	90068302	700.426	575.691
29) L6 AR-1254-4	7.304	6.315	32117623	34498450	539.229	373.959 #
30) L6 AR-1254-5	7.728	6.735	24243697	33800304	353.139	233.492 #
-----						

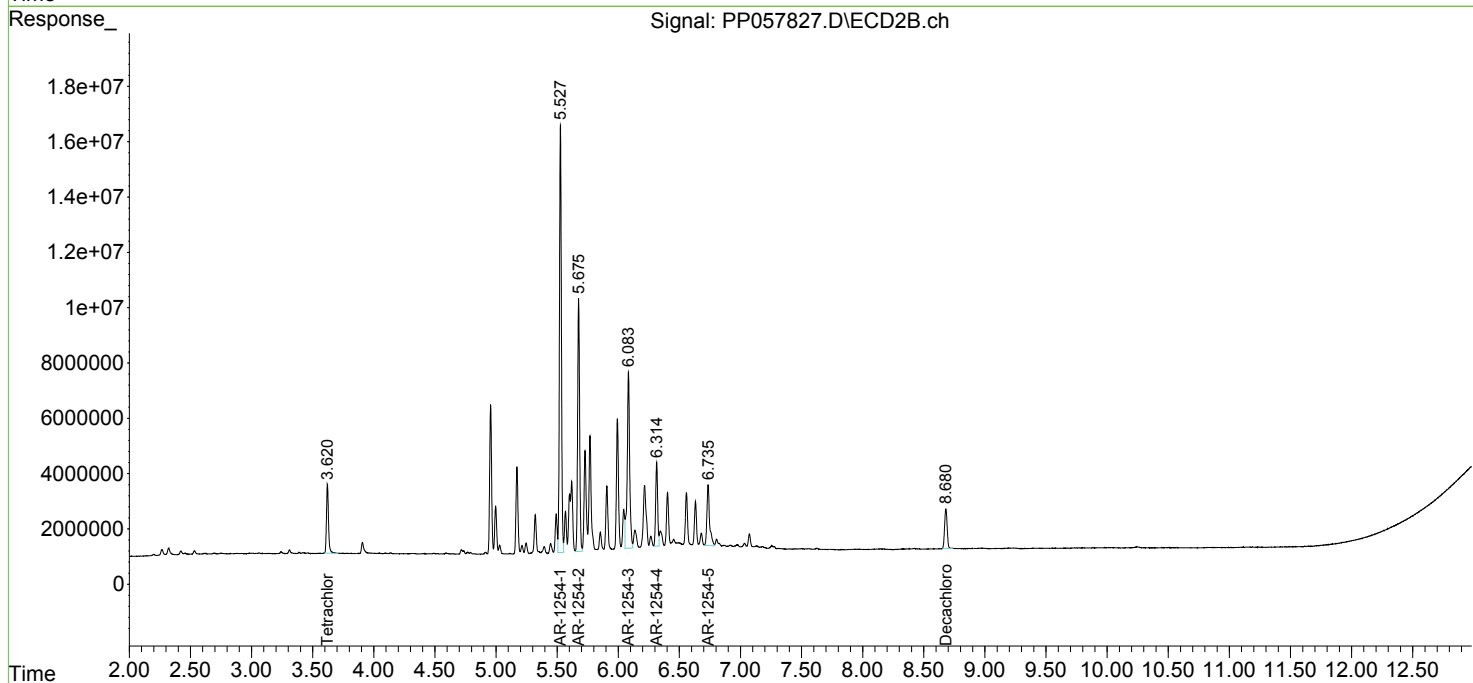
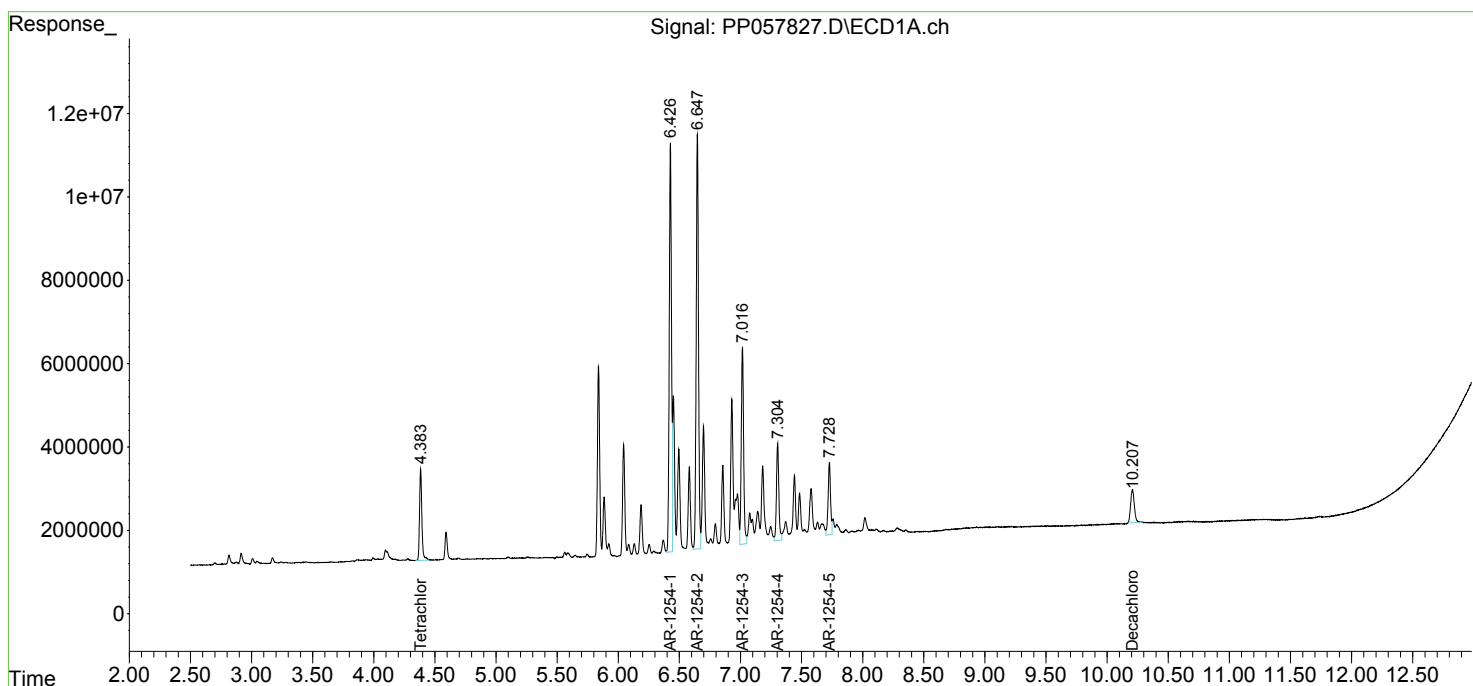
(f)=RT Delta > 1/2 Window (#)=Amounts differ by > 25% (m)=manual int.

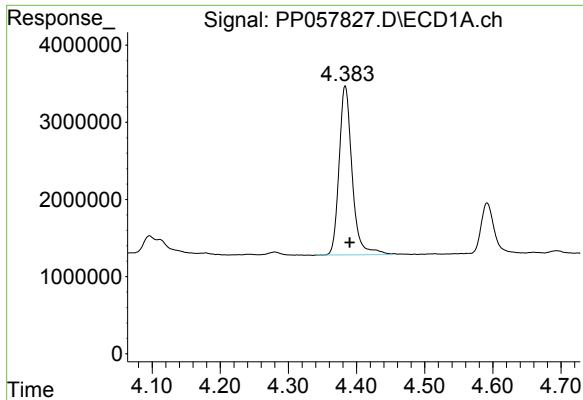
Data Path : Z:\pestpcbsrv\HPCHEM1\ECD\_P\Data\PP052423\  
 Data File : PP057827.D  
 Signal(s) : Signal #1: ECD1A.ch Signal #2: ECD2B.ch  
 Acq On : 24 May 2023 09:51  
 Operator : YP\AJ  
 Sample : 02885-01DL 2X  
 Misc :  
 ALS Vial : 7 Sample Multiplier: 1

Instrument :  
 ECD\_P  
 ClientSampleId :  
 40232DL

Integration File signal 1: autoint1.e  
 Integration File signal 2: autoint2.e  
 Quant Time: May 24 21:19:22 2023  
 Quant Method : Z:\pestpcbsrv\HPCHEM1\ECD\_P\methods\PP050823.M  
 Quant Title : GC EXTRACTABLES  
 QLast Update : Mon May 08 19:18:05 2023  
 Response via : Initial Calibration  
 Integrator: ChemStation

Volume Inj. : 2 µl  
 Signal #1 Phase : ZB-MR1 Signal #2 Phase: ZB-MR2  
 Signal #1 Info : 30Mx0.32mmx 0.50µ Signal #2 Info : 30M x 0.32mm x 0.25µm

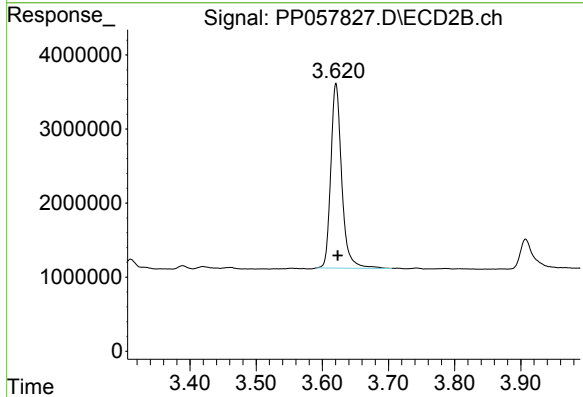




#1 Tetrachloro-m-xylene

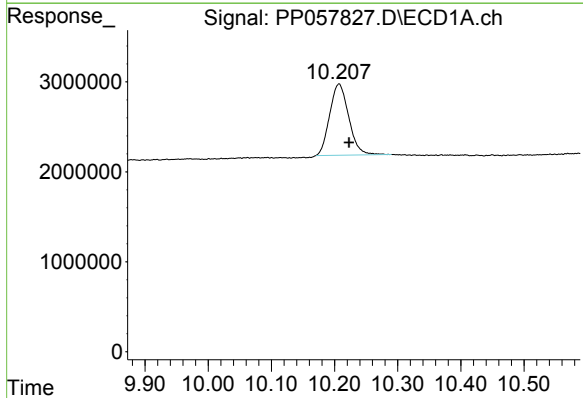
R.T.: 4.383 min  
Delta R.T.: -0.007 min  
Response: 29075434  
Conc: 13.25 ng/ml

Instrument :  
ECD\_P  
ClientSampleId :  
40232DL



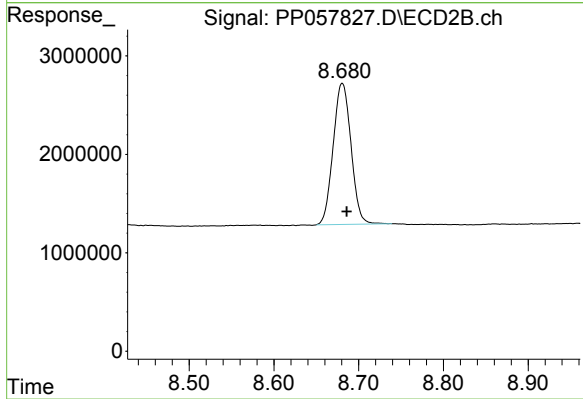
#1 Tetrachloro-m-xylene

R.T.: 3.621 min  
Delta R.T.: -0.003 min  
Response: 28696091  
Conc: 12.65 ng/ml



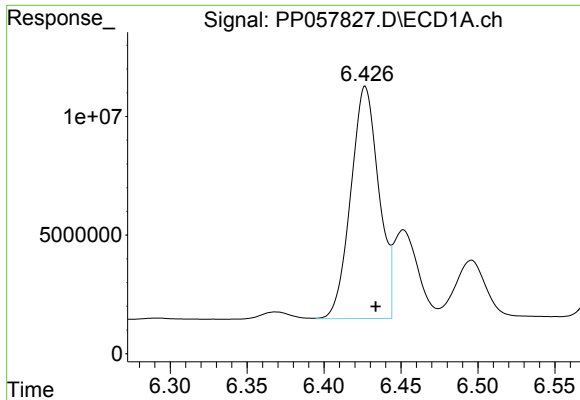
#2 Decachlorobiphenyl

R.T.: 10.207 min  
Delta R.T.: -0.016 min  
Response: 16651322  
Conc: 14.69 ng/ml



#2 Decachlorobiphenyl

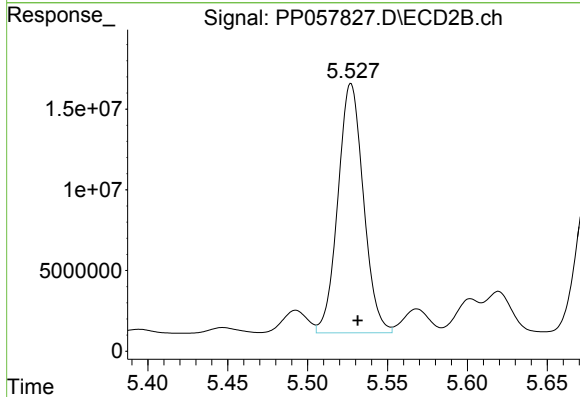
R.T.: 8.681 min  
Delta R.T.: -0.005 min  
Response: 21025561  
Conc: 13.39 ng/ml



#26 AR-1254-1

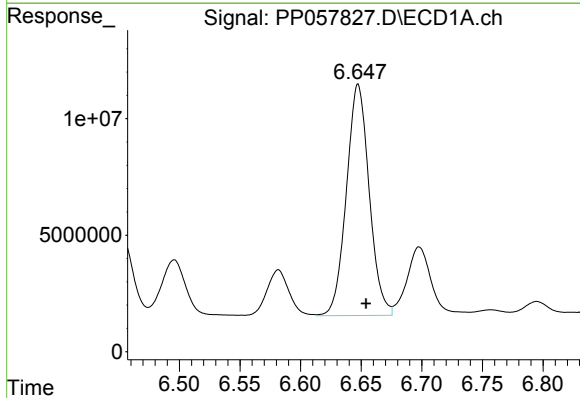
R.T.: 6.427 min  
 Delta R.T.: -0.007 min  
 Response: 124008277  
 Conc: 1847.62 ng/ml

Instrument :  
 ECD\_P  
 ClientSampleId :  
 40232DL



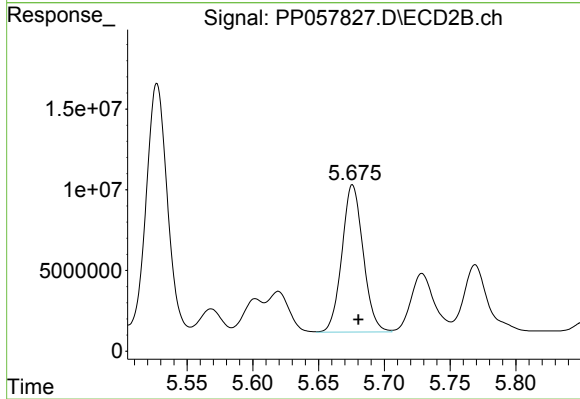
#26 AR-1254-1

R.T.: 5.527 min  
 Delta R.T.: -0.004 min  
 Response: 171671733  
 Conc: 1537.46 ng/ml



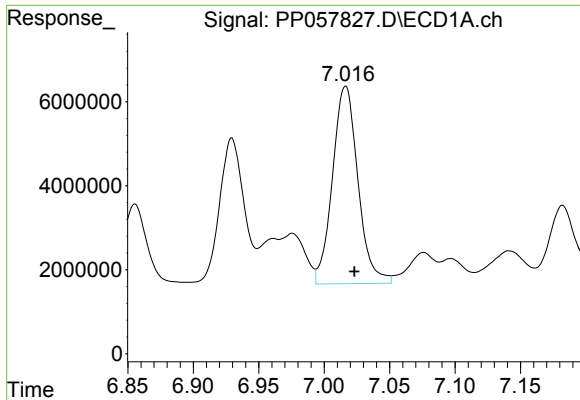
#27 AR-1254-2

R.T.: 6.647 min  
 Delta R.T.: -0.007 min  
 Response: 129960876  
 Conc: 1373.82 ng/ml



#27 AR-1254-2

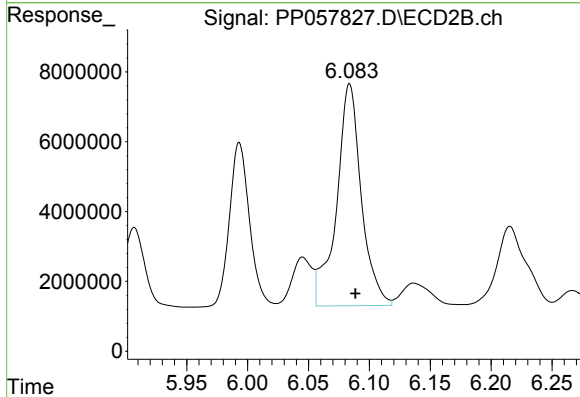
R.T.: 5.676 min  
 Delta R.T.: -0.004 min  
 Response: 102503470  
 Conc: 1027.05 ng/ml



#28 AR-1254-3

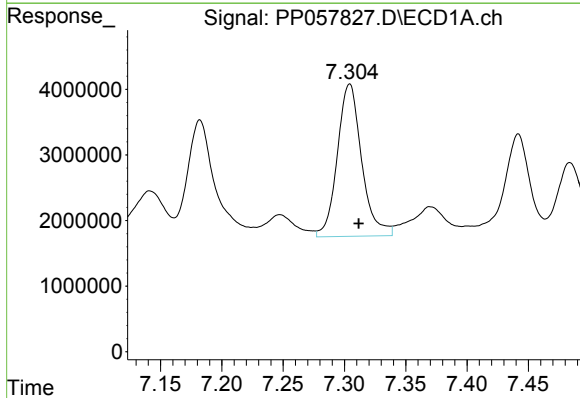
R.T.: 7.016 min  
 Delta R.T.: -0.007 min  
 Response: 63800757  
 Conc: 700.43 ng/ml

Instrument :  
 ECD\_P  
 ClientSampleId :  
 40232DL



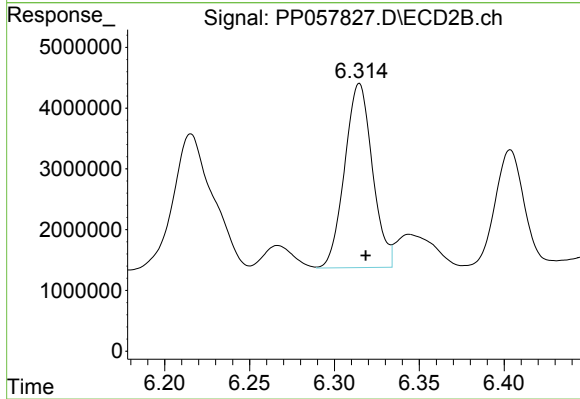
#28 AR-1254-3

R.T.: 6.084 min  
 Delta R.T.: -0.005 min  
 Response: 90068302  
 Conc: 575.69 ng/ml



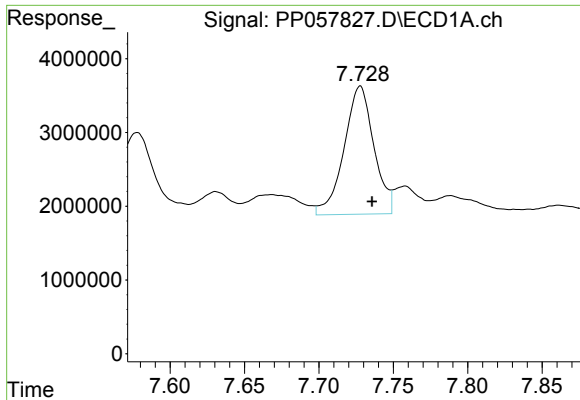
#29 AR-1254-4

R.T.: 7.304 min  
 Delta R.T.: -0.007 min  
 Response: 32117623  
 Conc: 539.23 ng/ml



#29 AR-1254-4

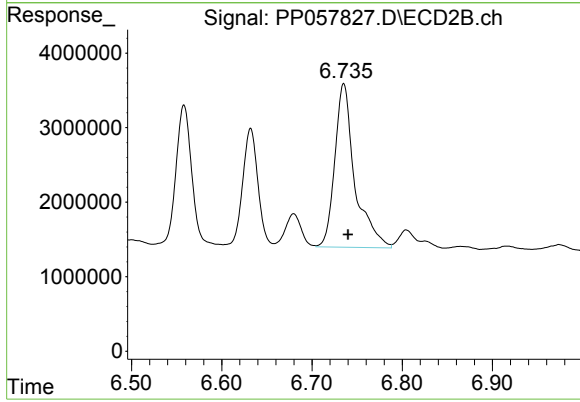
R.T.: 6.315 min  
 Delta R.T.: -0.004 min  
 Response: 34498450  
 Conc: 373.96 ng/ml



#30 AR-1254-5

R.T.: 7.728 min  
Delta R.T.: -0.008 min  
Response: 24243697  
Conc: 353.14 ng/ml

Instrument :  
ECD\_P  
ClientSampleId :  
40232DL



#30 AR-1254-5

R.T.: 6.735 min  
Delta R.T.: -0.005 min  
Response: 33800304  
Conc: 233.49 ng/ml