

Data Path : Z:\pestpcbsrv\HPCHEM1\ECD\_P\Data\PP052523\  
 Data File : PP057913.D  
 Signal(s) : Signal #1: ECD1A.ch Signal #2: ECD2B.ch  
 Acq On : 25 May 2023 15:02  
 Operator : YP\AJ  
 Sample : AR1660CCC500  
 Misc :  
 ALS Vial : 3 Sample Multiplier: 1

Instrument :  
 ECD\_P  
 ClientSampleId :

Integration File signal 1: autoint1.e  
 Integration File signal 2: autoint2.e  
 Quant Time: May 25 21:15:53 2023  
 Quant Method : Z:\pestpcbsrv\HPCHEM1\ECD\_P\methods\PP050823.M  
 Quant Title : GC EXTRACTABLES  
 QLast Update : Mon May 08 19:18:05 2023  
 Response via : Initial Calibration  
 Integrator: ChemStation

Volume Inj. : 2 µl  
 Signal #1 Phase : ZB-MR1 Signal #2 Phase: ZB-MR2  
 Signal #1 Info : 30Mx0.32mmx 0.50µ Signal #2 Info : 30M x 0.32mm x 0.25µm

Compound	RT#1	RT#2	Resp#1	Resp#2	ng/ml	ng/ml
System Monitoring Compounds						
1) SA Tetrachlo...	4.381	3.620	95623564	101.5E6	43.587	44.748
2) SA Decachlor...	10.205	8.678	58994588	66180825	52.058	42.160
Target Compounds						
3) L1 AR-1016-1	5.561	4.716	28333572	32979845	454.827	442.568
4) L1 AR-1016-2	5.583	4.735	41436661	45950314	460.886	444.532
5) L1 AR-1016-3	5.646	4.913	26561638	26366242	469.755	447.220
6) L1 AR-1016-4	5.745	4.955	21161994	20994359	458.228	446.319
7) L1 AR-1016-5	6.043	5.171	22382096	25097432	479.922	422.686
8) L2 AR-1221-1	4.586	3.834	3506971	3594691	121.192	121.901
9) L2 AR-1221-2	4.678	3.922	5111253	5365385	235.830	240.872
10) L2 AR-1221-3	4.755	3.998	17558980	18873548	291.481	296.225
11) L3 AR-1232-1	4.755	3.998	17558980	18873548	400.880	408.968
12) L3 AR-1232-2	5.290	4.735	24420770	45950314	936.427	971.012
13) L3 AR-1232-3	5.583	4.913	41436661	26366242	1015.278	968.684
14) L3 AR-1232-4	5.745	4.997	21161994	25828029	993.782	1059.456
15) L3 AR-1232-5	5.837	5.171	18578299	25097432	1017.273	907.609
16) L4 AR-1242-1	5.561	4.716	28333572	32979845	594.769	566.557
17) L4 AR-1242-2	5.583	4.735	41436661	45950314	605.915	575.687
18) L4 AR-1242-3	5.646	4.913	26561638	26366242	610.045	562.202
19) L4 AR-1242-4	5.745	4.997	21161994	25828029	600.562	556.634
20) L4 AR-1242-5	6.489	5.526	3135413	20969023	96.768	375.052 #
21) L5 AR-1248-1	5.561	4.716	28333572	32979845	673.280	640.898
22) L5 AR-1248-2	5.837	4.955	18578299	20994359	284.941	292.388
23) L5 AR-1248-3	6.043	4.997	22382096	25828029	322.315	341.375
24) L5 AR-1248-4	0.000	5.171	0	25097432	N.D.	281.357 #
25) L5 AR-1248-5	6.489	5.567	3135413	3233008	48.869	38.885
26) L6 AR-1254-1	6.424	5.526	20073421	20969023	299.077	187.795 #
27) L6 AR-1254-2	6.644	5.675	17783082	20019357	187.985	200.588
28) L6 AR-1254-3	7.014	6.098	9392686	35247426	103.116	225.291 #
29) L6 AR-1254-4	7.302	6.312	5775838	3879861	96.972	42.057 #
30) L6 AR-1254-5	7.725	6.733	47830245	62367177	696.706	430.832 #
31) L7 AR-1260-1	7.181	6.213	40067328	47646108	507.846	433.367
32) L7 AR-1260-2	7.440	6.403	39981762	54821538	499.034	431.345
33) L7 AR-1260-3	7.803	6.558	28800318	53192524	505.495	433.795
34) L7 AR-1260-4	8.031	7.033	33271273	37624906	500.747	430.586
35) L7 AR-1260-5	8.354	7.276	53890183	80393584	501.870	435.259
36) L8 AR-1262-1	7.803	6.826	28800318	24125046	334.451	379.701
37) L8 AR-1262-2	8.354	7.033	53890183	37624906	442.690	303.498 #
38) L8 AR-1262-3	8.682	7.561	35774199	16909787	411.478	180.209 #
39) L8 AR-1262-4	8.762	7.625	9657019	60081953	144.064	352.690 #
40) L8 AR-1262-5	9.431	8.125	11978166	17419800	312.839	236.694
41) L9 AR-1268-1	8.682	7.561	35774199	16909787	229.755	64.237 #

Data Path : Z:\pestpcbsrv\HPCHEM1\ECD\_P\Data\PP052523\  
 Data File : PP057913.D  
 Signal(s) : Signal #1: ECD1A.ch Signal #2: ECD2B.ch  
 Acq On : 25 May 2023 15:02  
 Operator : YP\AJ  
 Sample : AR1660CCC500  
 Misc :  
 ALS Vial : 3 Sample Multiplier: 1

Instrument :  
 ECD\_P  
 ClientSampleId :

Integration File signal 1: autoint1.e  
 Integration File signal 2: autoint2.e  
 Quant Time: May 25 21:15:53 2023  
 Quant Method : Z:\pestpcbsrv\HPCHEM1\ECD\_P\methods\PP050823.M  
 Quant Title : GC EXTRACTABLES  
 QLast Update : Mon May 08 19:18:05 2023  
 Response via : Initial Calibration  
 Integrator: ChemStation

Volume Inj. : 2 µl  
 Signal #1 Phase : ZB-MR1 Signal #2 Phase: ZB-MR2  
 Signal #1 Info : 30Mx0.32mmx 0.50µ Signal #2 Info : 30M x 0.32mm x 0.25µm

	Compound	RT#1	RT#2	Resp#1	Resp#2	ng/ml	ng/ml
42)	L9 AR-1268-2	8.762	7.625	9657019	60081953	74.011	245.403 #
43)	L9 AR-1268-3	8.997	7.834	1462799	1373484	11.330	6.774 #
44)	L9 AR-1268-4	9.431	8.125	11978166	17419800	282.839	210.335 #
45)	L9 AR-1268-5	9.857	8.420	4364713	6038094	13.354	11.677

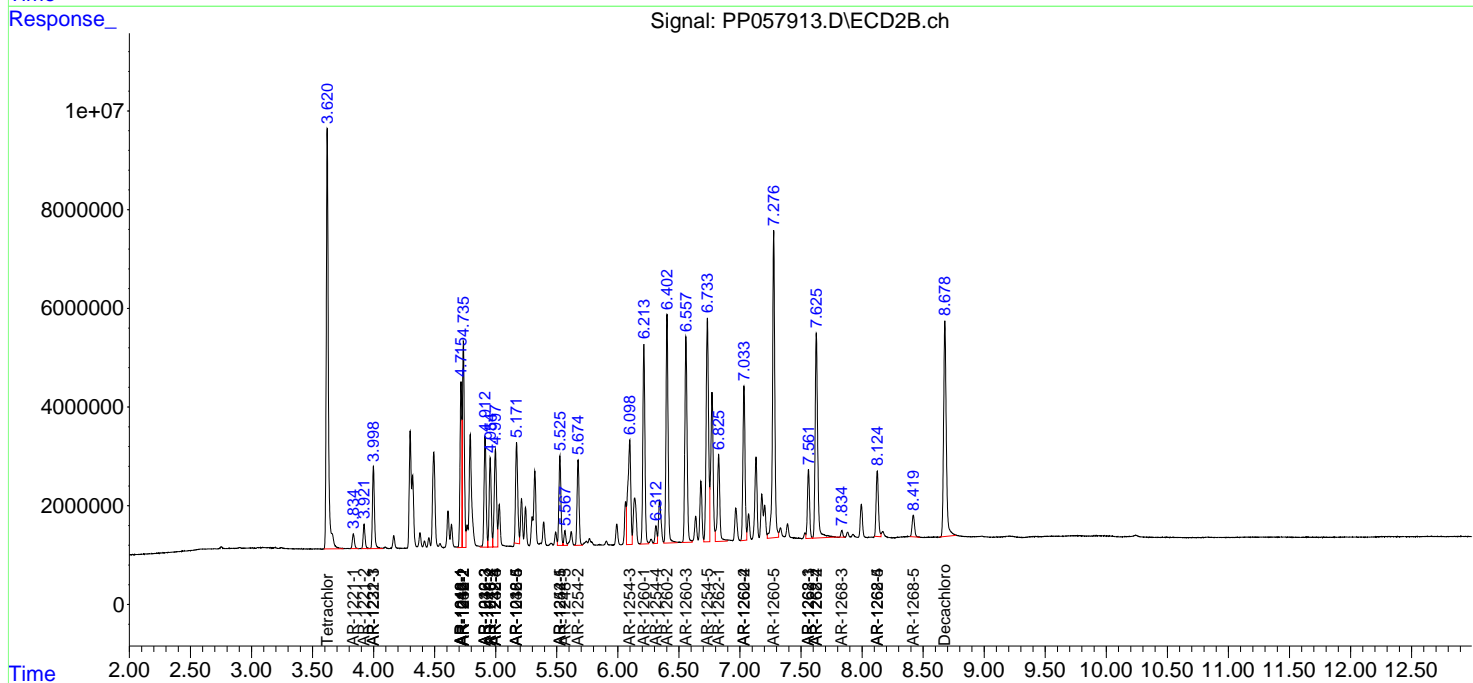
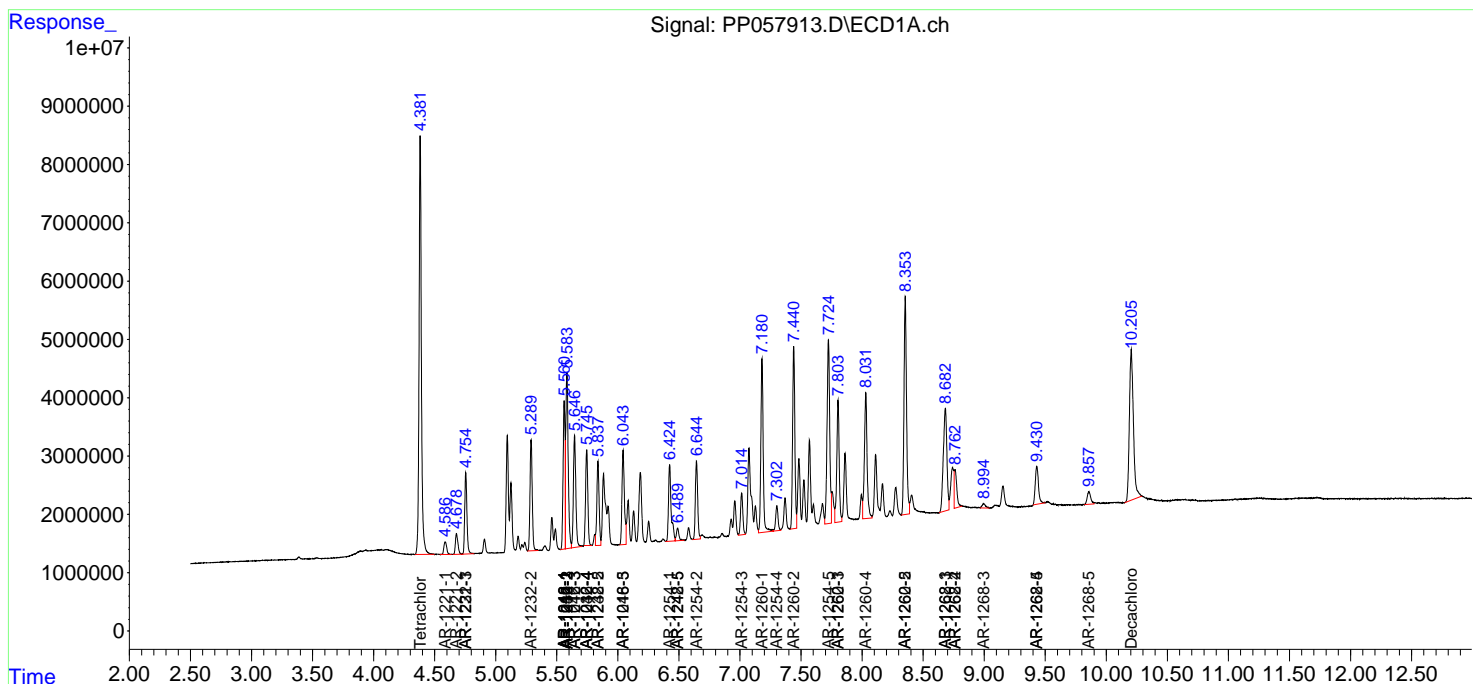
(f)=RT Delta > 1/2 Window (#)=Amounts differ by > 25% (m)=manual int.

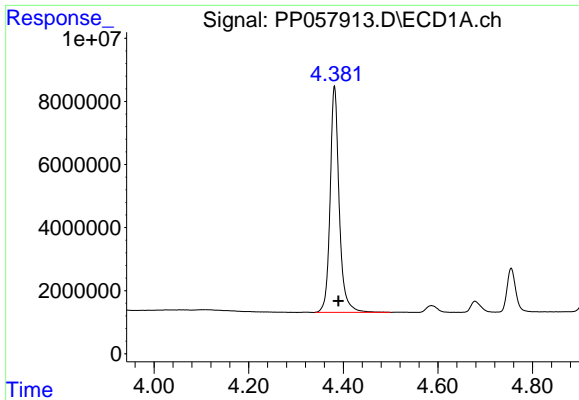
Data Path : Z:\pestpcbsrv\HPCHEM1\ECD\_P\Data\PP052523\  
 Data File : PP057913.D  
 Signal(s) : Signal #1: ECD1A.ch Signal #2: ECD2B.ch  
 Acq On : 25 May 2023 15:02  
 Operator : YP\AJ  
 Sample : AR1660CCC500  
 Misc :  
 ALS Vial : 3 Sample Multiplier: 1

Instrument :  
 ECD\_P  
 ClientSampleId :

Integration File signal 1: autoint1.e  
 Integration File signal 2: autoint2.e  
 Quant Time: May 25 21:15:53 2023  
 Quant Method : Z:\pestpcbsrv\HPCHEM1\ECD\_P\methods\PP050823.M  
 Quant Title : GC EXTRACTABLES  
 QLast Update : Mon May 08 19:18:05 2023  
 Response via : Initial Calibration  
 Integrator: ChemStation

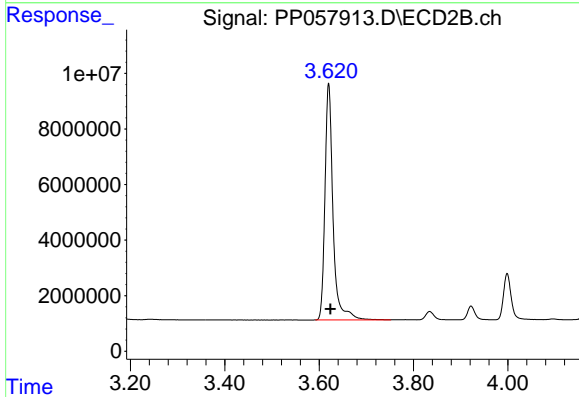
Volume Inj. : 2 µl  
 Signal #1 Phase : ZB-MR1 Signal #2 Phase: ZB-MR2  
 Signal #1 Info : 30Mx0.32mmx 0.50µ Signal #2 Info : 30M x 0.32mm x 0.25µm



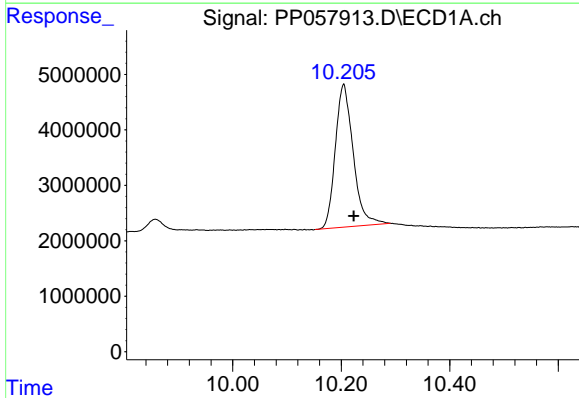


#1 Tetrachloro-m-xylene  
 R.T.: 4.381 min  
 Delta R.T.: -0.009 min  
 Response: 95623564  
 Conc: 43.59 ng/ml

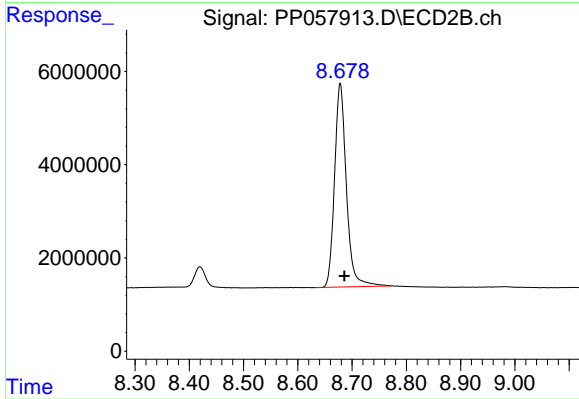
Instrument :  
 ECD\_P  
 ClientSampleId :



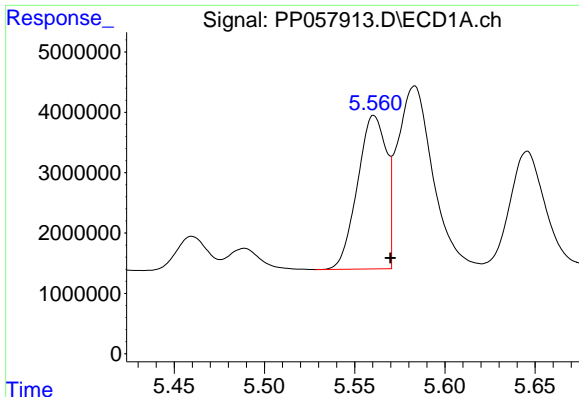
#1 Tetrachloro-m-xylene  
 R.T.: 3.620 min  
 Delta R.T.: -0.003 min  
 Response: 101504055  
 Conc: 44.75 ng/ml



#2 Decachlorobiphenyl  
 R.T.: 10.205 min  
 Delta R.T.: -0.019 min  
 Response: 58994588  
 Conc: 52.06 ng/ml



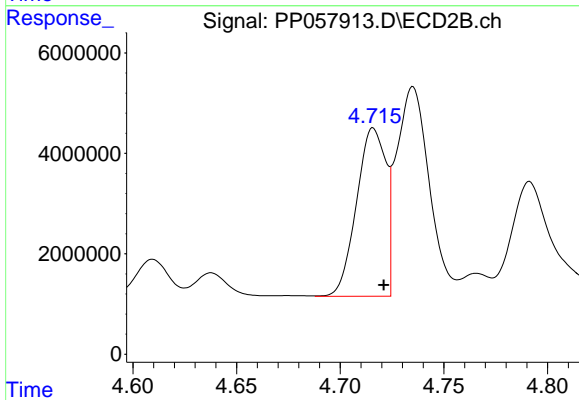
#2 Decachlorobiphenyl  
 R.T.: 8.678 min  
 Delta R.T.: -0.008 min  
 Response: 66180825  
 Conc: 42.16 ng/ml



#3 AR-1016-1

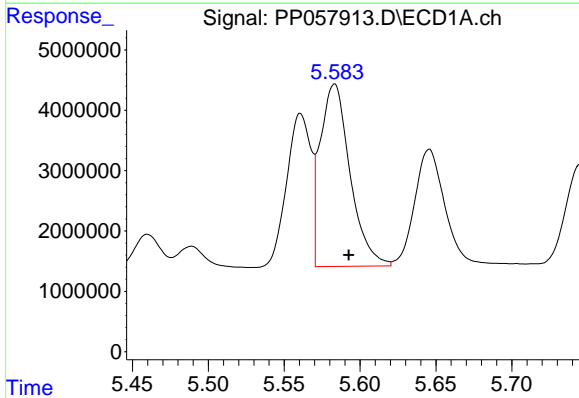
R.T.: 5.561 min  
 Delta R.T.: -0.009 min  
 Response: 28333572  
 Conc: 454.83 ng/ml

Instrument :  
 ECD\_P  
 ClientSampleId :



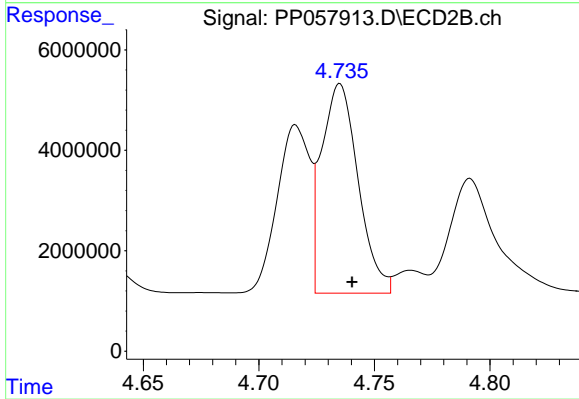
#3 AR-1016-1

R.T.: 4.716 min  
 Delta R.T.: -0.005 min  
 Response: 32979845  
 Conc: 442.57 ng/ml



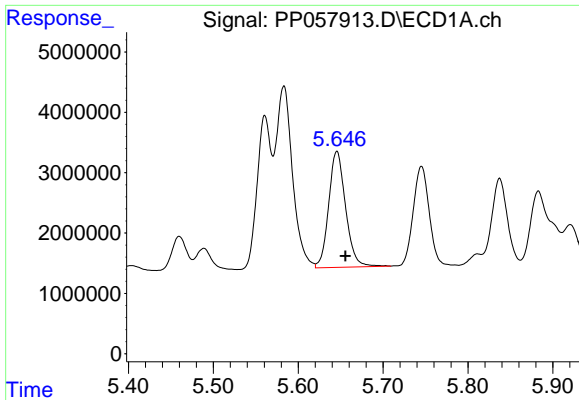
#4 AR-1016-2

R.T.: 5.583 min  
 Delta R.T.: -0.009 min  
 Response: 41436661  
 Conc: 460.89 ng/ml



#4 AR-1016-2

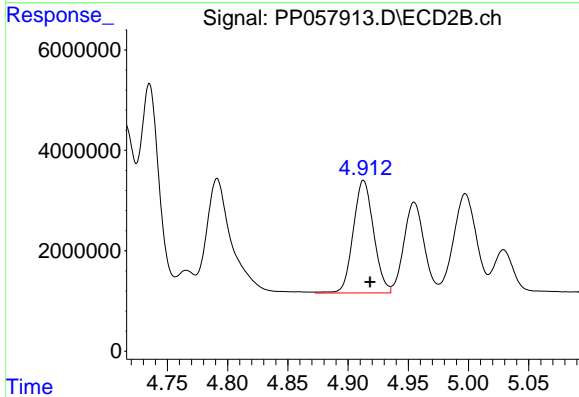
R.T.: 4.735 min  
 Delta R.T.: -0.005 min  
 Response: 45950314  
 Conc: 444.53 ng/ml



#5 AR-1016-3

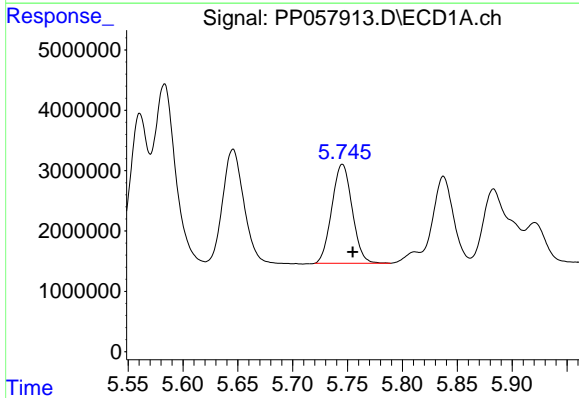
R.T.: 5.646 min  
 Delta R.T.: -0.010 min  
 Response: 26561638  
 Conc: 469.76 ng/ml

Instrument :  
 ECD\_P  
 ClientSampleId :



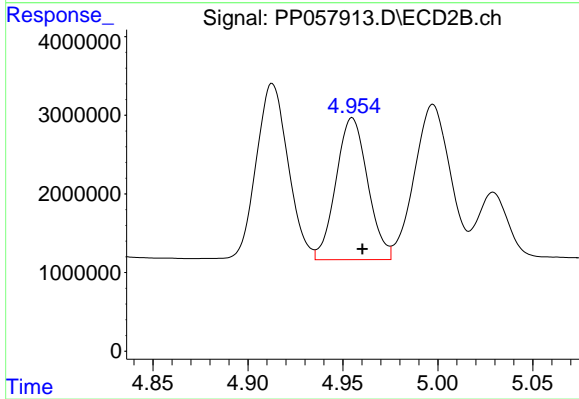
#5 AR-1016-3

R.T.: 4.913 min  
 Delta R.T.: -0.005 min  
 Response: 26366242  
 Conc: 447.22 ng/ml



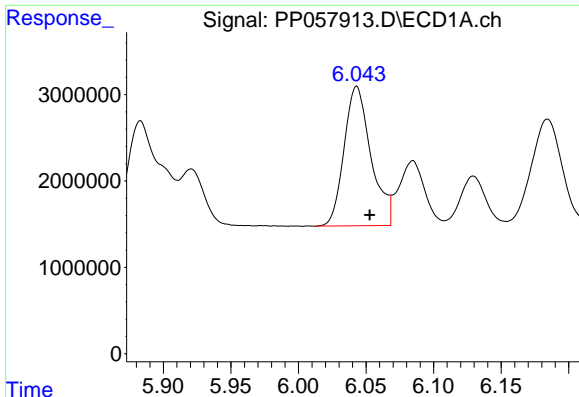
#6 AR-1016-4

R.T.: 5.745 min  
 Delta R.T.: -0.009 min  
 Response: 21161994  
 Conc: 458.23 ng/ml



#6 AR-1016-4

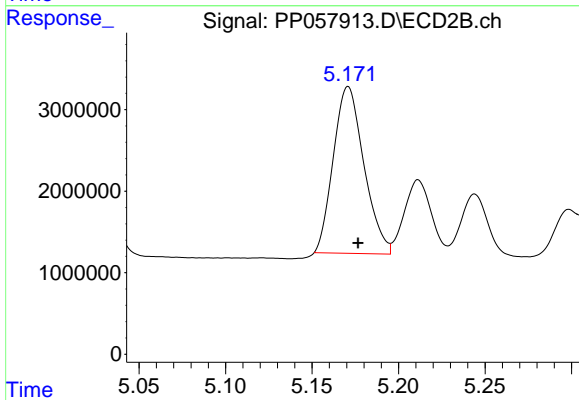
R.T.: 4.955 min  
 Delta R.T.: -0.005 min  
 Response: 20994359  
 Conc: 446.32 ng/ml



#7 AR-1016-5

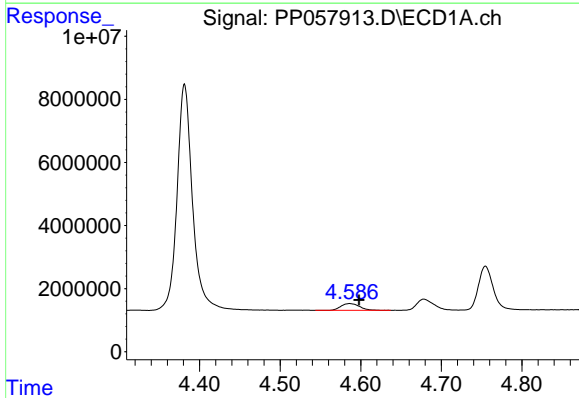
R.T.: 6.043 min  
Delta R.T.: -0.010 min  
Response: 22382096  
Conc: 479.92 ng/ml

Instrument :  
ECD\_P  
ClientSampleId :



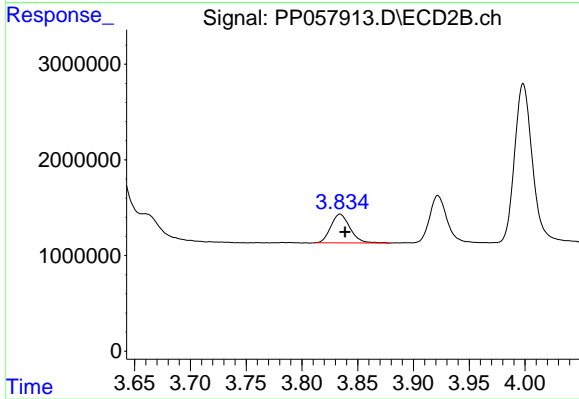
#7 AR-1016-5

R.T.: 5.171 min  
Delta R.T.: -0.006 min  
Response: 25097432  
Conc: 422.69 ng/ml



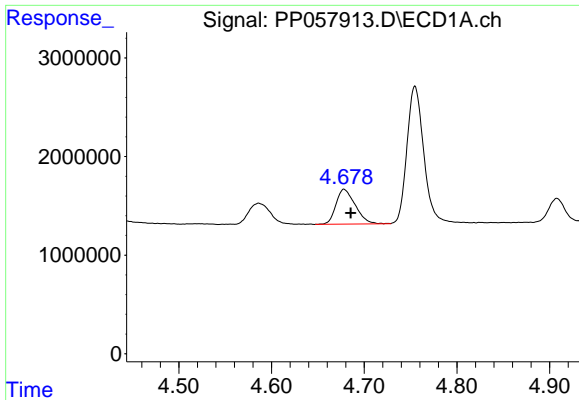
#8 AR-1221-1

R.T.: 4.586 min  
Delta R.T.: -0.012 min  
Response: 3506971  
Conc: 121.19 ng/ml



#8 AR-1221-1

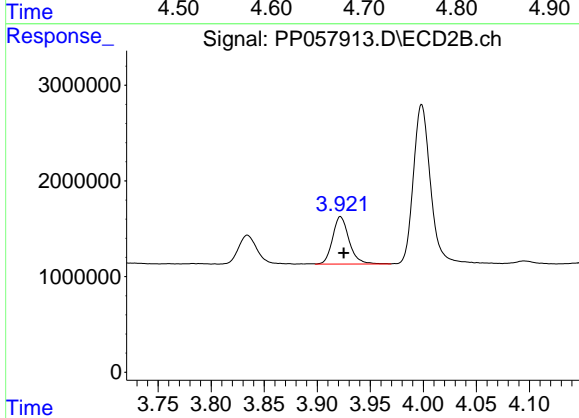
R.T.: 3.834 min  
Delta R.T.: -0.005 min  
Response: 3594691  
Conc: 121.90 ng/ml



#9 AR-1221-2

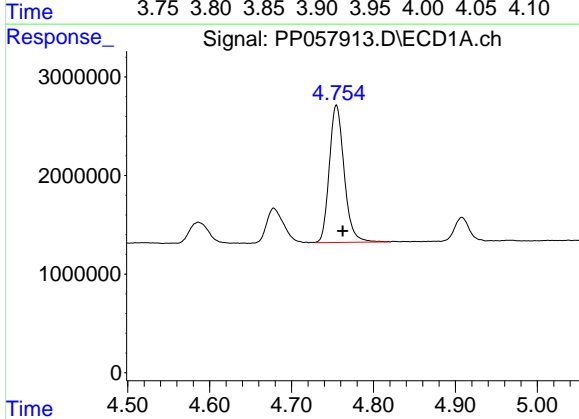
R.T.: 4.678 min  
 Delta R.T.: -0.007 min  
 Response: 5111253  
 Conc: 235.83 ng/ml

Instrument :  
 ECD\_P  
 ClientSampleId :



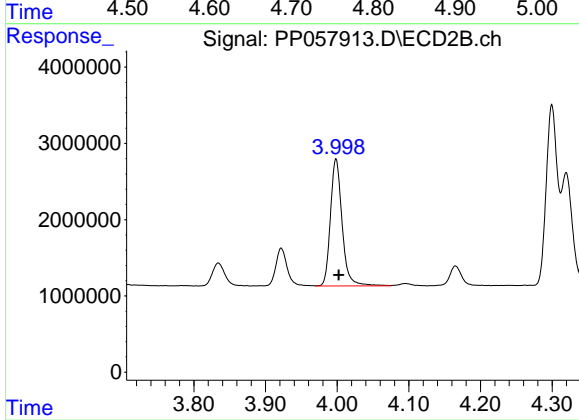
#9 AR-1221-2

R.T.: 3.922 min  
 Delta R.T.: -0.003 min  
 Response: 5365385  
 Conc: 240.87 ng/ml



#10 AR-1221-3

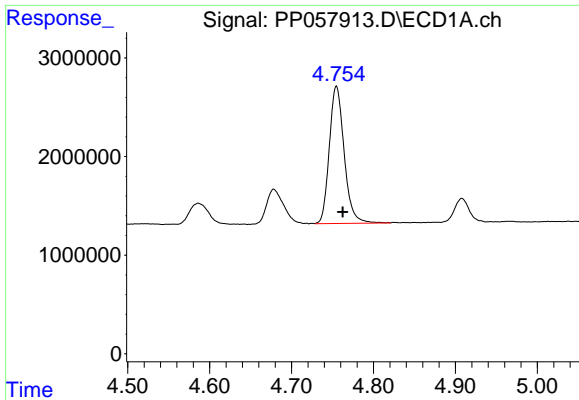
R.T.: 4.755 min  
 Delta R.T.: -0.008 min  
 Response: 17558980  
 Conc: 291.48 ng/ml



#10 AR-1221-3

R.T.: 3.998 min  
 Delta R.T.: -0.004 min  
 Response: 18873548  
 Conc: 296.23 ng/ml

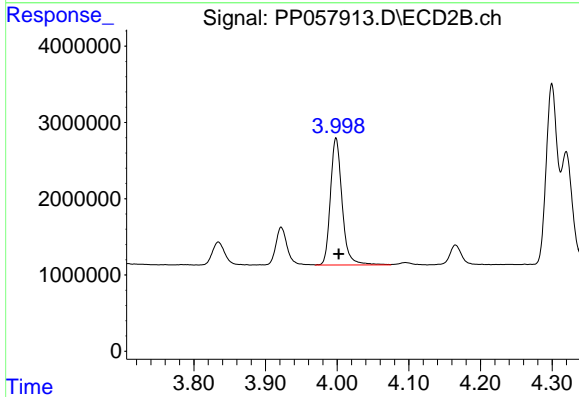




#11 AR-1232-1

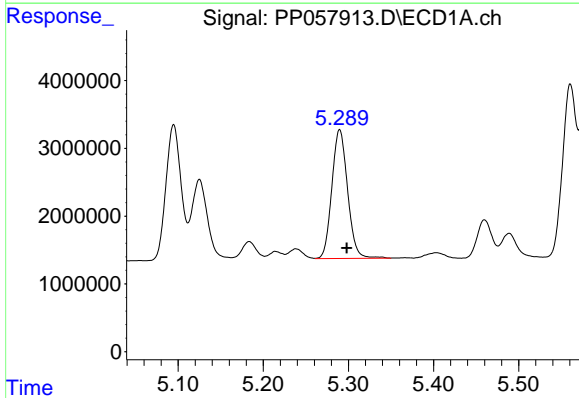
R.T.: 4.755 min  
 Delta R.T.: -0.008 min  
 Response: 17558980  
 Conc: 400.88 ng/ml

Instrument :  
 ECD\_P  
 ClientSampleId :



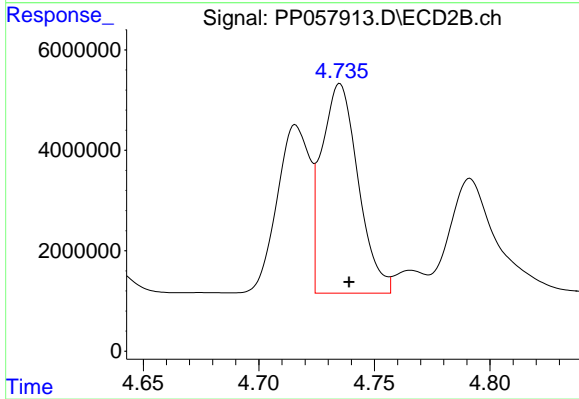
#11 AR-1232-1

R.T.: 3.998 min  
 Delta R.T.: -0.004 min  
 Response: 18873548  
 Conc: 408.97 ng/ml



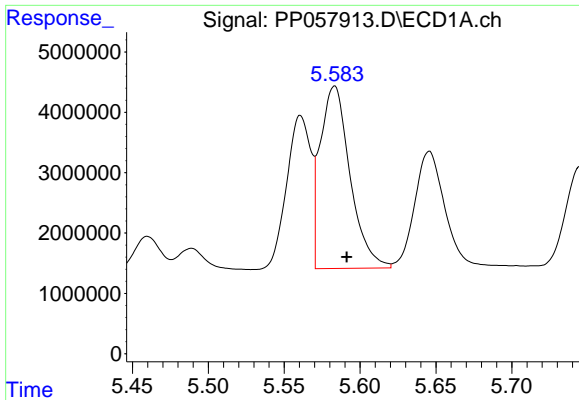
#12 AR-1232-2

R.T.: 5.290 min  
 Delta R.T.: -0.008 min  
 Response: 24420770  
 Conc: 936.43 ng/ml



#12 AR-1232-2

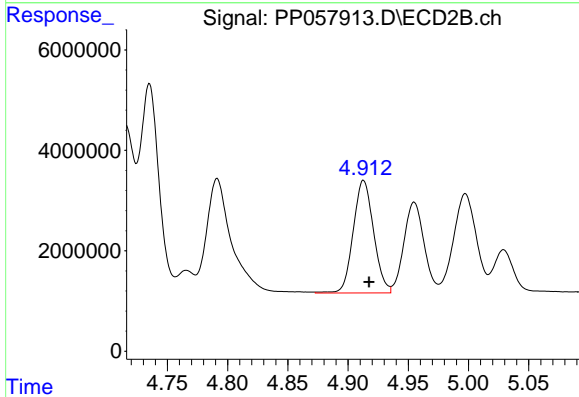
R.T.: 4.735 min  
 Delta R.T.: -0.004 min  
 Response: 45950314  
 Conc: 971.01 ng/ml



#13 AR-1232-3

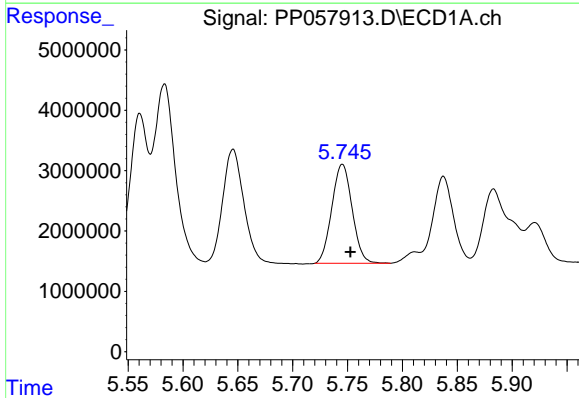
R.T.: 5.583 min  
 Delta R.T.: -0.008 min  
 Response: 41436661  
 Conc: 1015.28 ng/ml

Instrument :  
 ECD\_P  
 ClientSampleId :



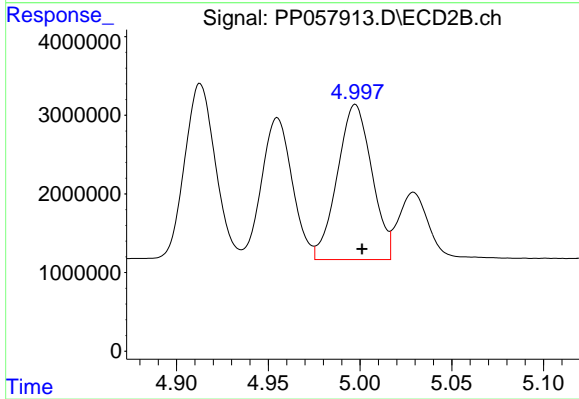
#13 AR-1232-3

R.T.: 4.913 min  
 Delta R.T.: -0.005 min  
 Response: 26366242  
 Conc: 968.68 ng/ml



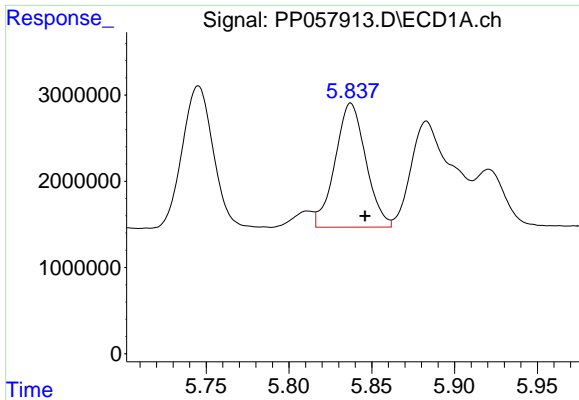
#14 AR-1232-4

R.T.: 5.745 min  
 Delta R.T.: -0.007 min  
 Response: 21161994  
 Conc: 993.78 ng/ml



#14 AR-1232-4

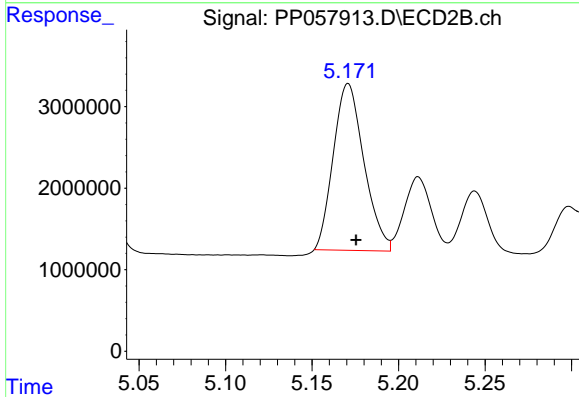
R.T.: 4.997 min  
 Delta R.T.: -0.004 min  
 Response: 25828029  
 Conc: 1059.46 ng/ml



#15 AR-1232-5

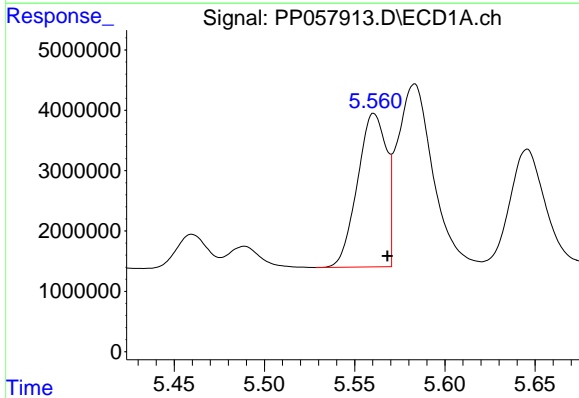
R.T.: 5.837 min  
 Delta R.T.: -0.009 min  
 Response: 18578299  
 Conc: 1017.27 ng/ml

Instrument :  
 ECD\_P  
 ClientSampleId :



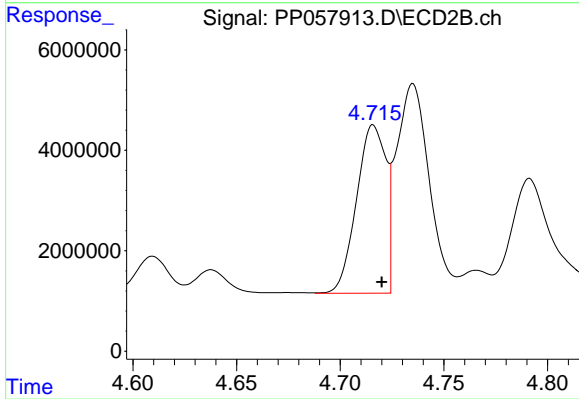
#15 AR-1232-5

R.T.: 5.171 min  
 Delta R.T.: -0.005 min  
 Response: 25097432  
 Conc: 907.61 ng/ml



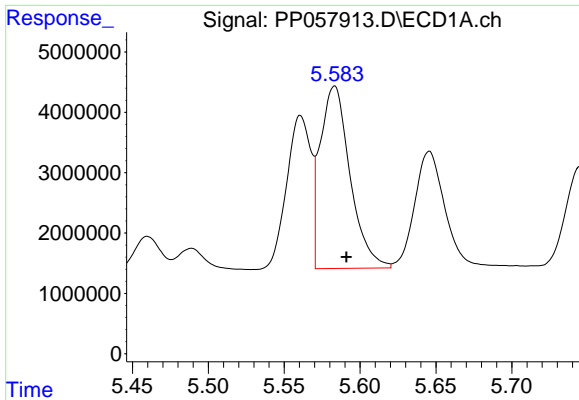
#16 AR-1242-1

R.T.: 5.561 min  
 Delta R.T.: -0.007 min  
 Response: 28333572  
 Conc: 594.77 ng/ml



#16 AR-1242-1

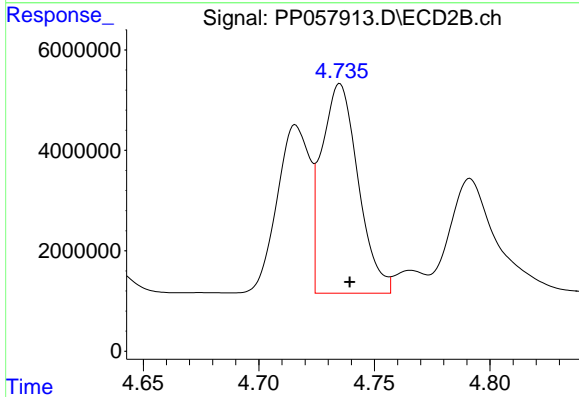
R.T.: 4.716 min  
 Delta R.T.: -0.004 min  
 Response: 32979845  
 Conc: 566.56 ng/ml



#17 AR-1242-2

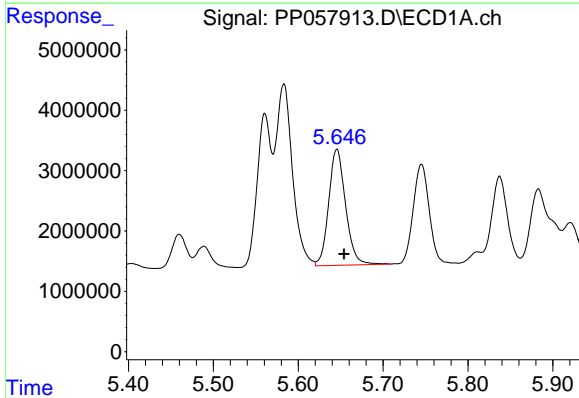
R.T.: 5.583 min  
 Delta R.T.: -0.008 min  
 Response: 41436661  
 Conc: 605.92 ng/ml

Instrument :  
 ECD\_P  
 ClientSampleId :



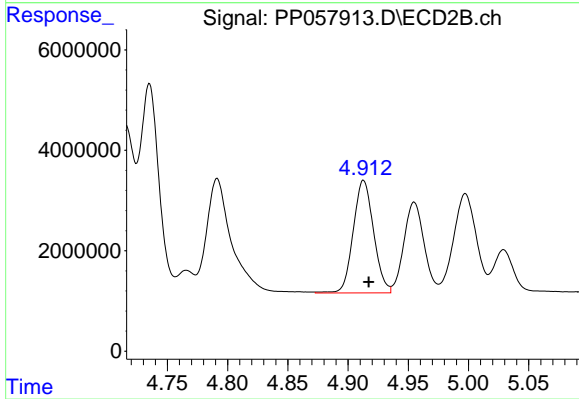
#17 AR-1242-2

R.T.: 4.735 min  
 Delta R.T.: -0.004 min  
 Response: 45950314  
 Conc: 575.69 ng/ml



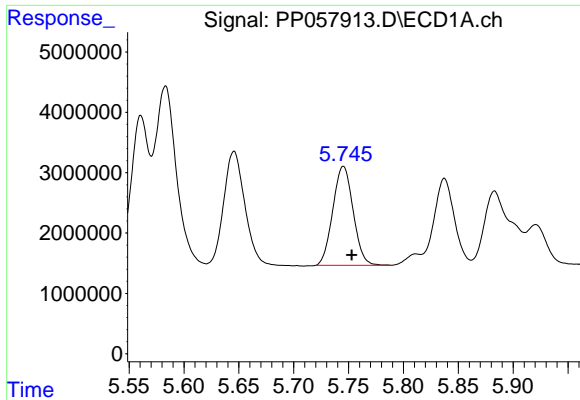
#18 AR-1242-3

R.T.: 5.646 min  
 Delta R.T.: -0.008 min  
 Response: 26561638  
 Conc: 610.05 ng/ml



#18 AR-1242-3

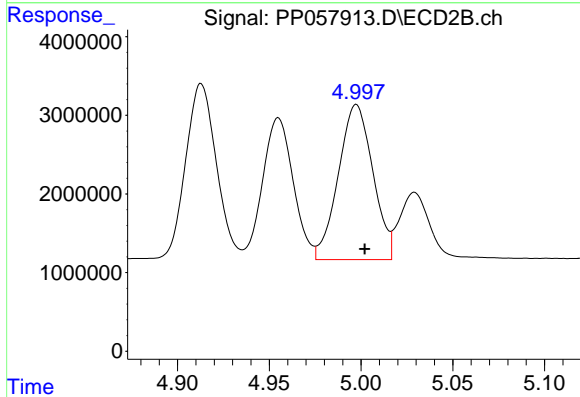
R.T.: 4.913 min  
 Delta R.T.: -0.004 min  
 Response: 26366242  
 Conc: 562.20 ng/ml



#19 AR-1242-4

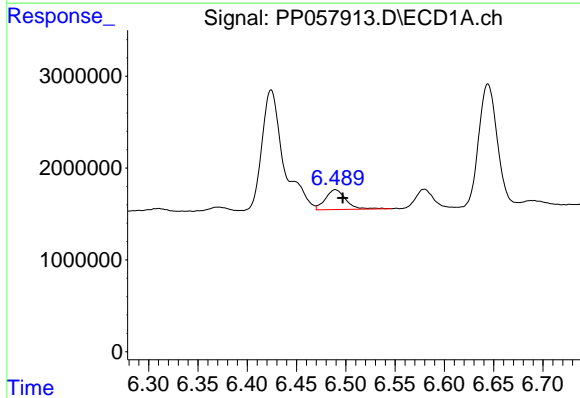
R.T.: 5.745 min  
 Delta R.T.: -0.008 min  
 Response: 21161994  
 Conc: 600.56 ng/ml

Instrument :  
 ECD\_P  
 ClientSampleId :



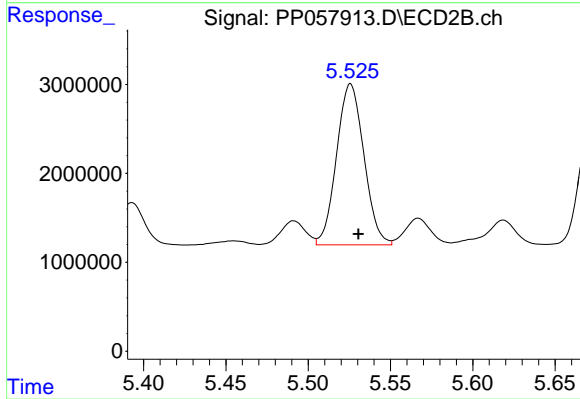
#19 AR-1242-4

R.T.: 4.997 min  
 Delta R.T.: -0.005 min  
 Response: 25828029  
 Conc: 556.63 ng/ml



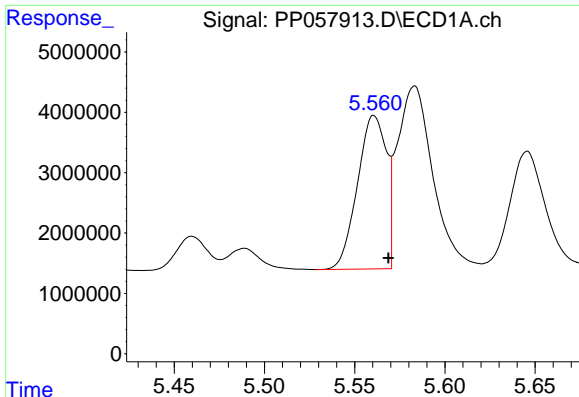
#20 AR-1242-5

R.T.: 6.489 min  
 Delta R.T.: -0.008 min  
 Response: 3135413  
 Conc: 96.77 ng/ml



#20 AR-1242-5

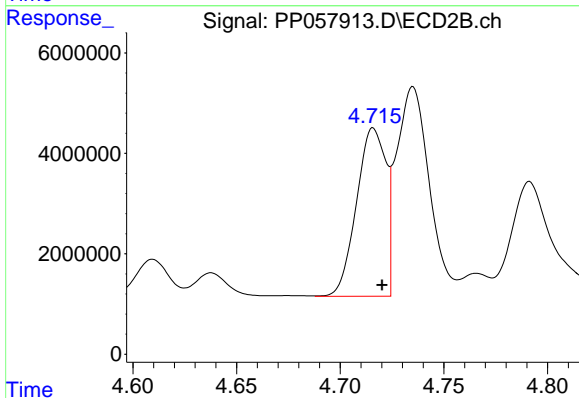
R.T.: 5.526 min  
 Delta R.T.: -0.005 min  
 Response: 20969023  
 Conc: 375.05 ng/ml



#21 AR-1248-1

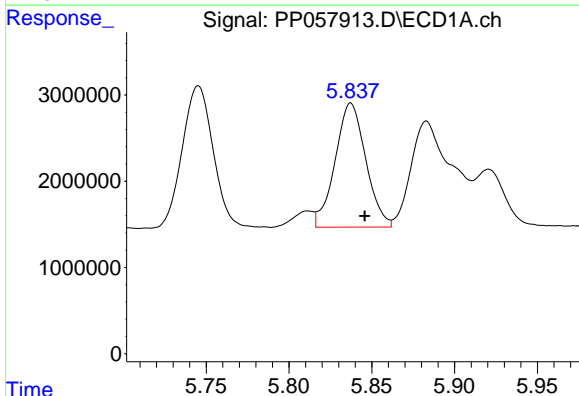
R.T.: 5.561 min  
 Delta R.T.: -0.008 min  
 Response: 28333572  
 Conc: 673.28 ng/ml

Instrument :  
 ECD\_P  
 ClientSampleId :



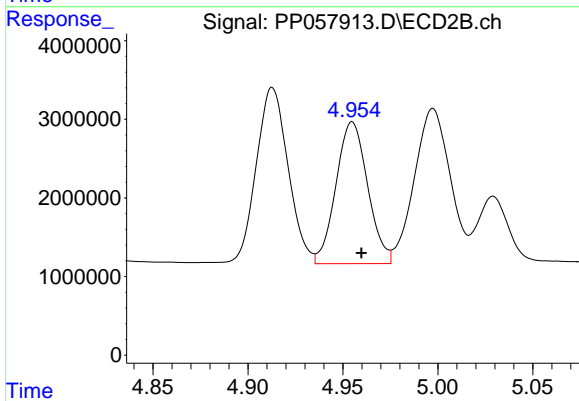
#21 AR-1248-1

R.T.: 4.716 min  
 Delta R.T.: -0.004 min  
 Response: 32979845  
 Conc: 640.90 ng/ml



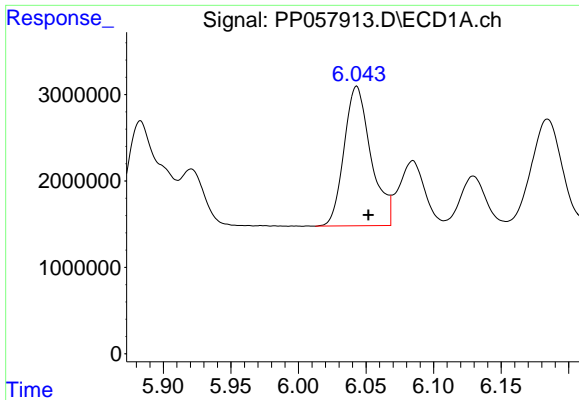
#22 AR-1248-2

R.T.: 5.837 min  
 Delta R.T.: -0.008 min  
 Response: 18578299  
 Conc: 284.94 ng/ml



#22 AR-1248-2

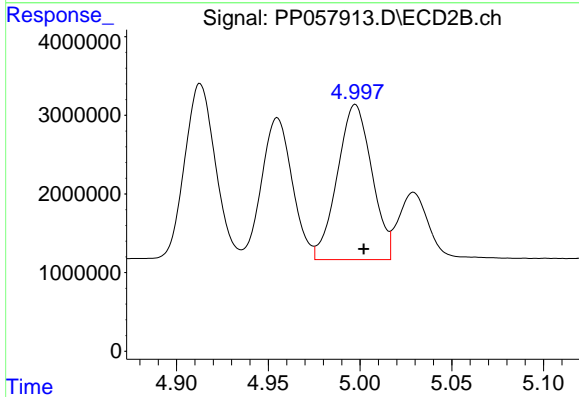
R.T.: 4.955 min  
 Delta R.T.: -0.005 min  
 Response: 20994359  
 Conc: 292.39 ng/ml



#23 AR-1248-3

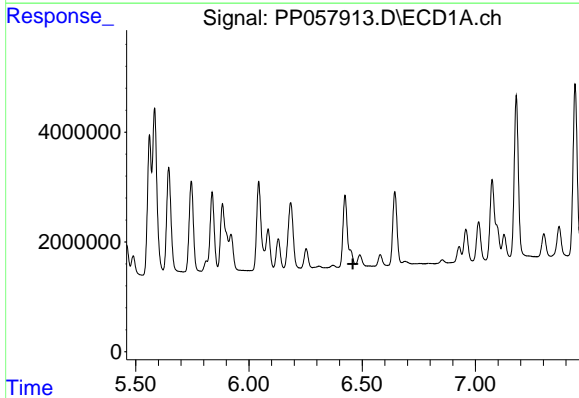
R.T.: 6.043 min  
 Delta R.T.: -0.009 min  
 Response: 22382096  
 Conc: 322.32 ng/ml

Instrument :  
 ECD\_P  
 ClientSampleId :



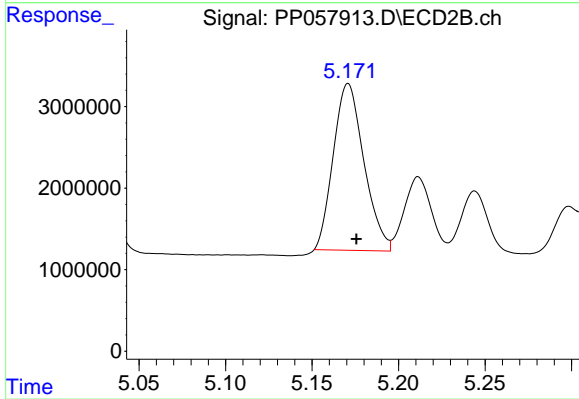
#23 AR-1248-3

R.T.: 4.997 min  
 Delta R.T.: -0.005 min  
 Response: 25828029  
 Conc: 341.38 ng/ml



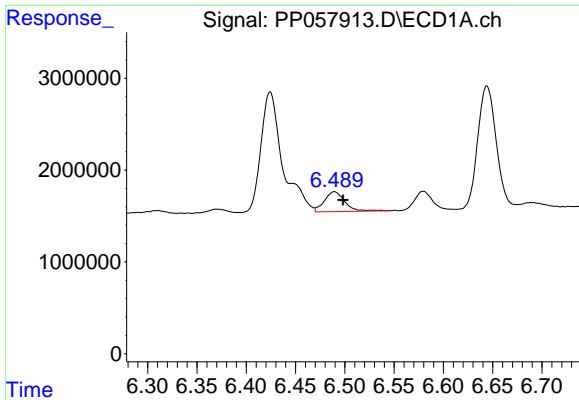
#24 AR-1248-4

R.T.: 0.000 min  
 Exp R.T. : 6.459 min  
 Response: 0  
 Conc: N.D.



#24 AR-1248-4

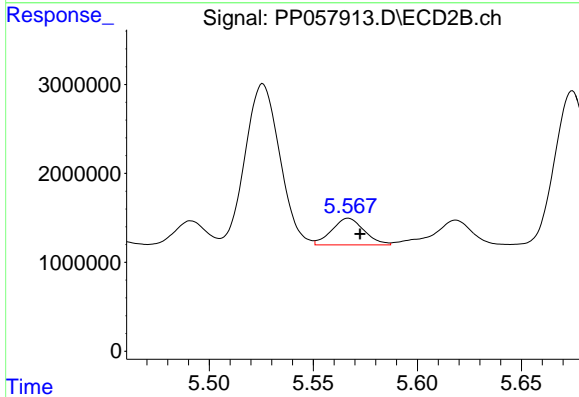
R.T.: 5.171 min  
 Delta R.T.: -0.005 min  
 Response: 25097432  
 Conc: 281.36 ng/ml



#25 AR-1248-5

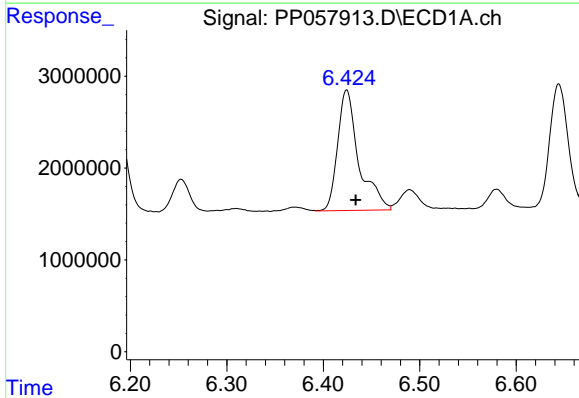
R.T.: 6.489 min  
 Delta R.T.: -0.009 min  
 Response: 3135413  
 Conc: 48.87 ng/ml

Instrument :  
 ECD\_P  
 ClientSampleId :



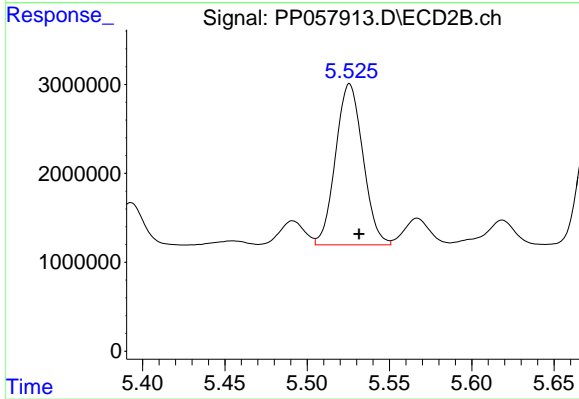
#25 AR-1248-5

R.T.: 5.567 min  
 Delta R.T.: -0.006 min  
 Response: 3233008  
 Conc: 38.89 ng/ml



#26 AR-1254-1

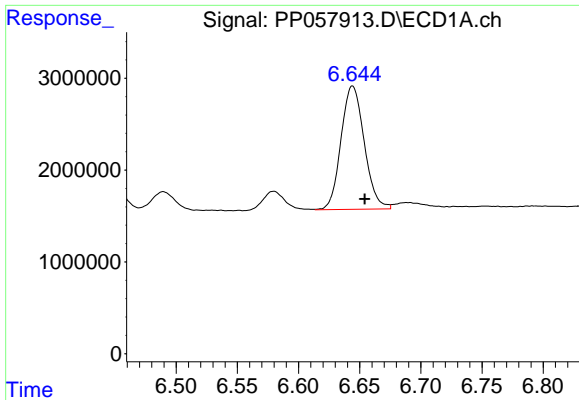
R.T.: 6.424 min  
 Delta R.T.: -0.009 min  
 Response: 20073421  
 Conc: 299.08 ng/ml



#26 AR-1254-1

R.T.: 5.526 min  
 Delta R.T.: -0.006 min  
 Response: 20969023  
 Conc: 187.79 ng/ml

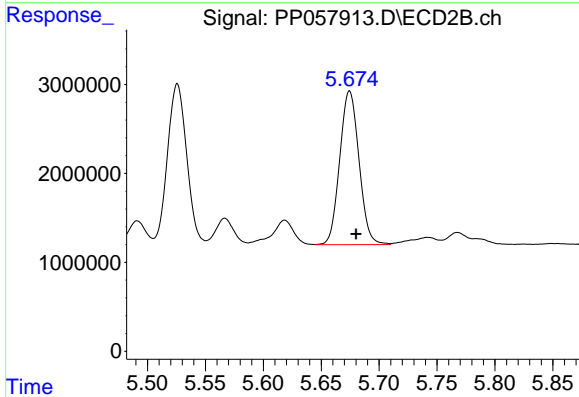




#27 AR-1254-2

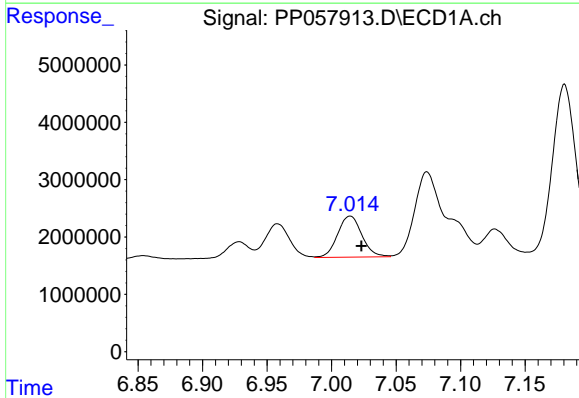
R.T.: 6.644 min  
 Delta R.T.: -0.010 min  
 Response: 17783082  
 Conc: 187.99 ng/ml

Instrument :  
 ECD\_P  
 ClientSampleId :



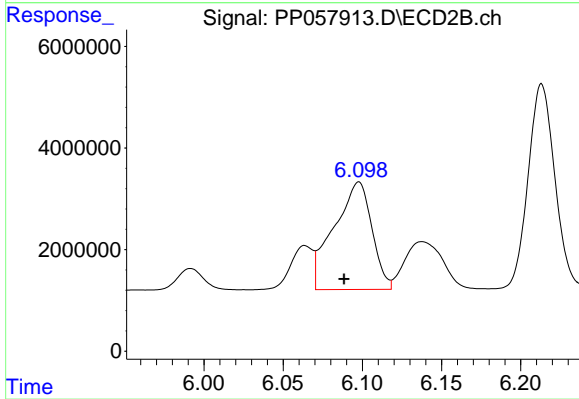
#27 AR-1254-2

R.T.: 5.675 min  
 Delta R.T.: -0.006 min  
 Response: 20019357  
 Conc: 200.59 ng/ml



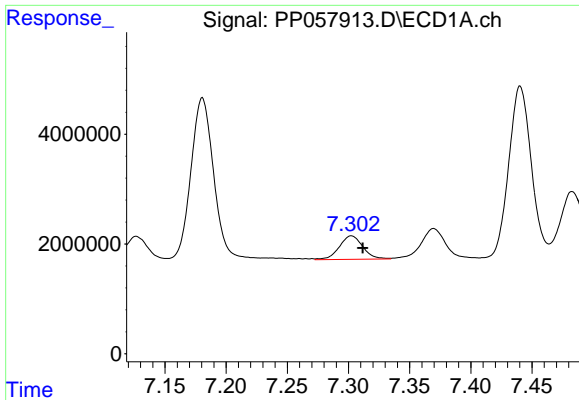
#28 AR-1254-3

R.T.: 7.014 min  
 Delta R.T.: -0.009 min  
 Response: 9392686  
 Conc: 103.12 ng/ml



#28 AR-1254-3

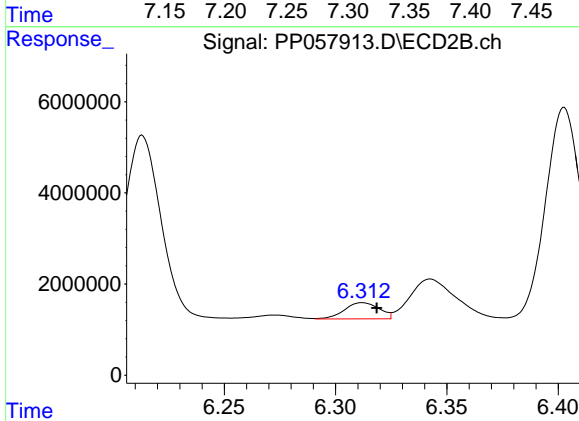
R.T.: 6.098 min  
 Delta R.T.: 0.009 min  
 Response: 35247426  
 Conc: 225.29 ng/ml



#29 AR-1254-4

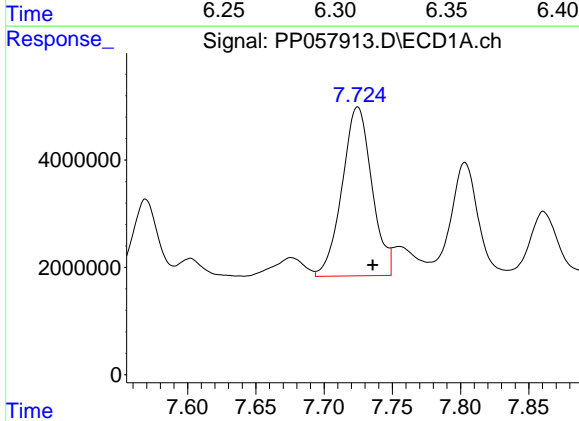
R.T.: 7.302 min  
 Delta R.T.: -0.009 min  
 Response: 5775838  
 Conc: 96.97 ng/ml

Instrument :  
 ECD\_P  
 ClientSampleId :



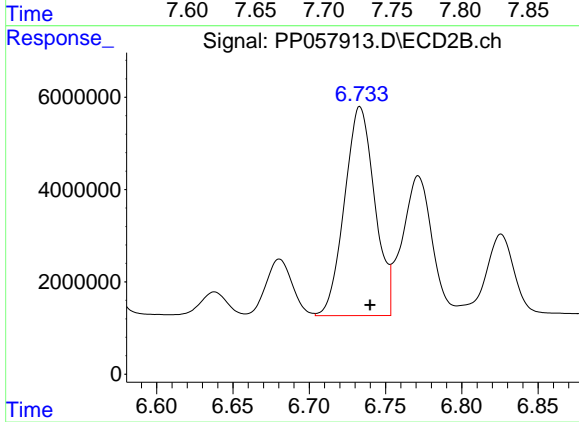
#29 AR-1254-4

R.T.: 6.312 min  
 Delta R.T.: -0.006 min  
 Response: 3879861  
 Conc: 42.06 ng/ml



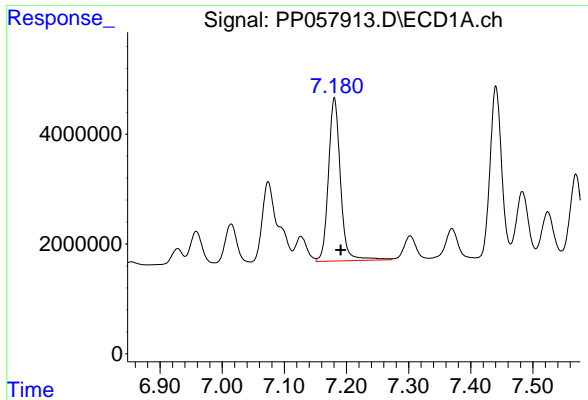
#30 AR-1254-5

R.T.: 7.725 min  
 Delta R.T.: -0.011 min  
 Response: 47830245  
 Conc: 696.71 ng/ml



#30 AR-1254-5

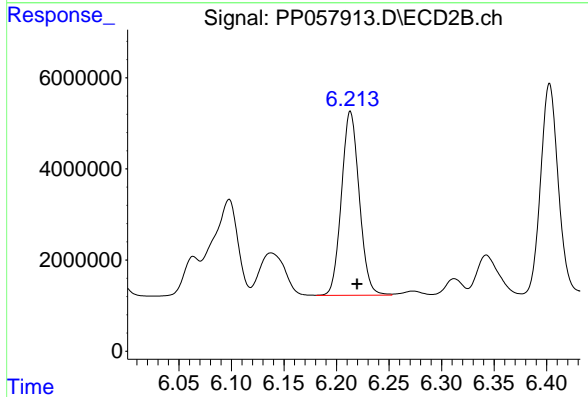
R.T.: 6.733 min  
 Delta R.T.: -0.007 min  
 Response: 62367177  
 Conc: 430.83 ng/ml



#31 AR-1260-1

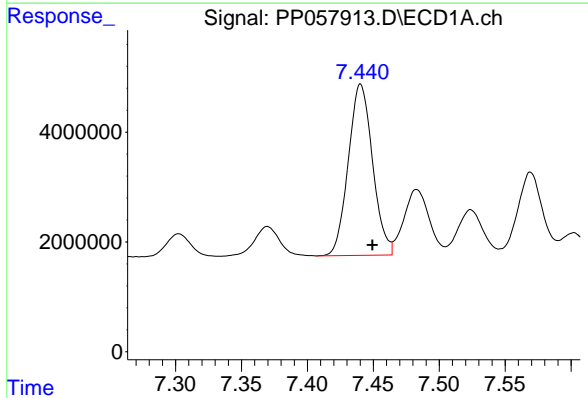
R.T.: 7.181 min  
 Delta R.T.: -0.010 min  
 Response: 40067328  
 Conc: 507.85 ng/ml

Instrument :  
 ECD\_P  
 ClientSampleId :



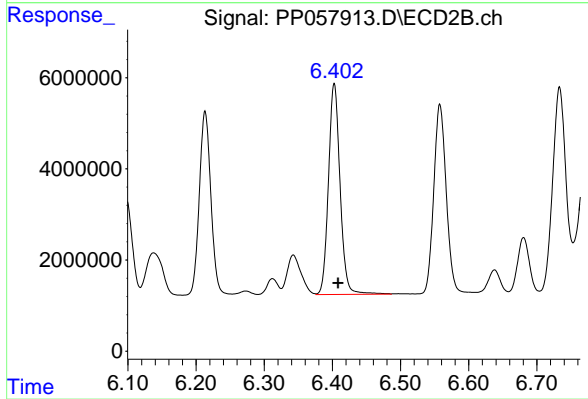
#31 AR-1260-1

R.T.: 6.213 min  
 Delta R.T.: -0.006 min  
 Response: 47646108  
 Conc: 433.37 ng/ml



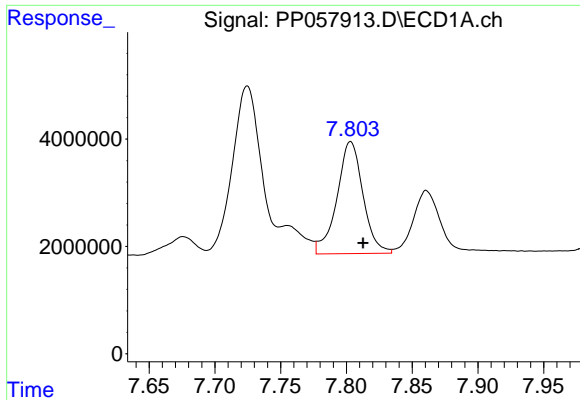
#32 AR-1260-2

R.T.: 7.440 min  
 Delta R.T.: -0.009 min  
 Response: 39981762  
 Conc: 499.03 ng/ml



#32 AR-1260-2

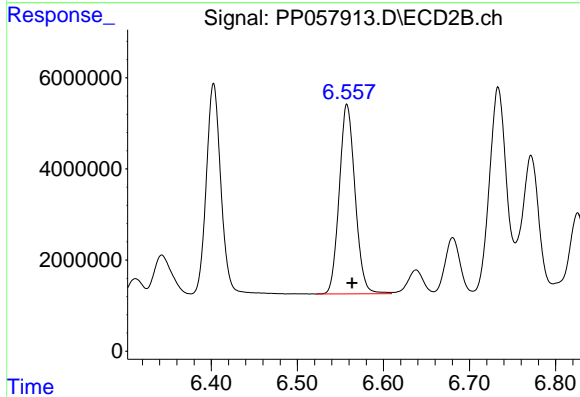
R.T.: 6.403 min  
 Delta R.T.: -0.006 min  
 Response: 54821538  
 Conc: 431.34 ng/ml



#33 AR-1260-3

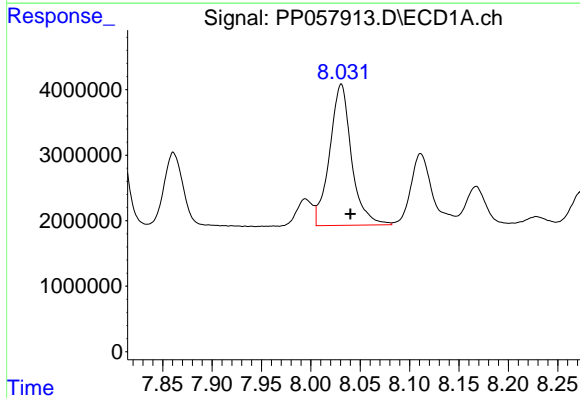
R.T.: 7.803 min  
 Delta R.T.: -0.009 min  
 Response: 28800318  
 Conc: 505.50 ng/ml

Instrument :  
 ECD\_P  
 ClientSampleId :



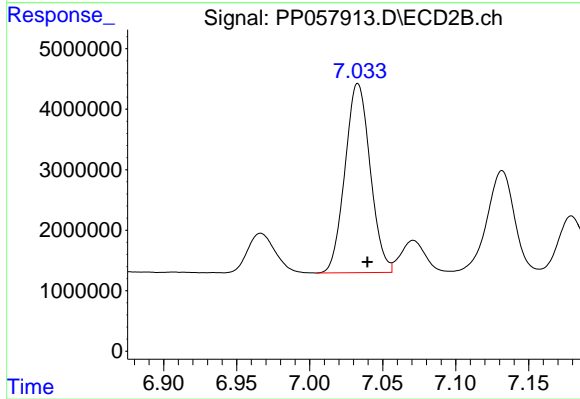
#33 AR-1260-3

R.T.: 6.558 min  
 Delta R.T.: -0.006 min  
 Response: 53192524  
 Conc: 433.79 ng/ml



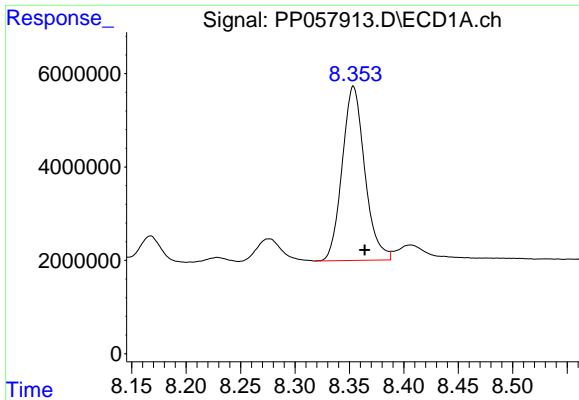
#34 AR-1260-4

R.T.: 8.031 min  
 Delta R.T.: -0.009 min  
 Response: 33271273  
 Conc: 500.75 ng/ml



#34 AR-1260-4

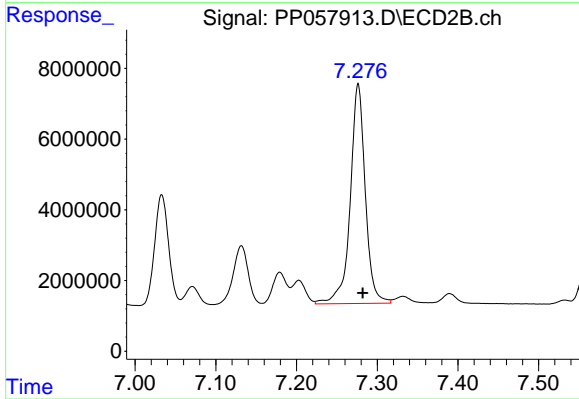
R.T.: 7.033 min  
 Delta R.T.: -0.007 min  
 Response: 37624906  
 Conc: 430.59 ng/ml



#35 AR-1260-5

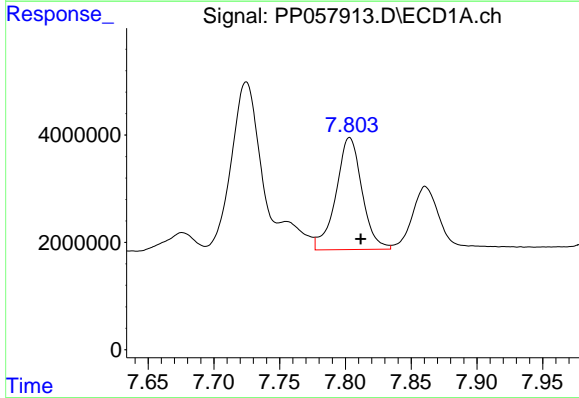
R.T.: 8.354 min  
Delta R.T.: -0.010 min  
Response: 53890183  
Conc: 501.87 ng/ml

Instrument :  
ECD\_P  
ClientSampleId :



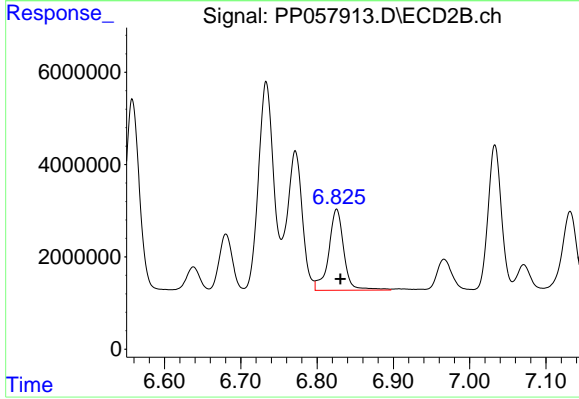
#35 AR-1260-5

R.T.: 7.276 min  
Delta R.T.: -0.006 min  
Response: 80393584  
Conc: 435.26 ng/ml



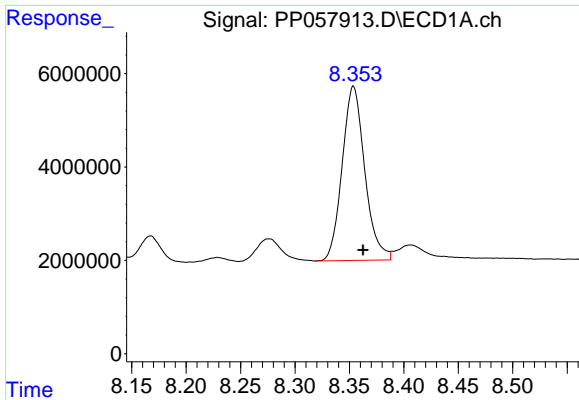
#36 AR-1262-1

R.T.: 7.803 min  
Delta R.T.: -0.009 min  
Response: 28800318  
Conc: 334.45 ng/ml



#36 AR-1262-1

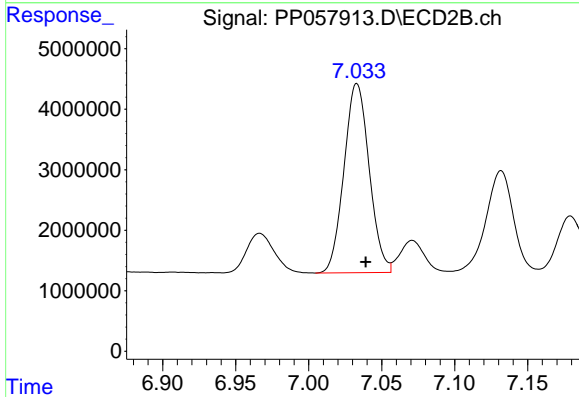
R.T.: 6.826 min  
Delta R.T.: -0.005 min  
Response: 24125046  
Conc: 379.70 ng/ml



#37 AR-1262-2

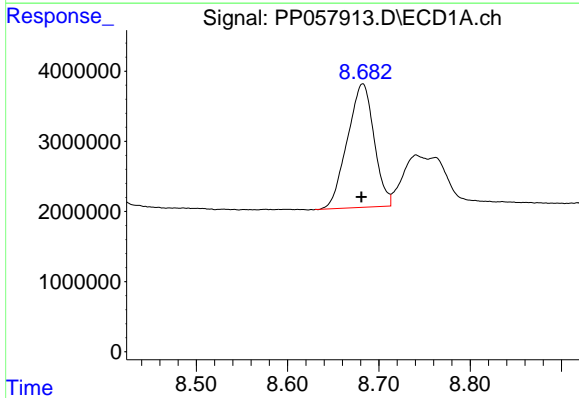
R.T.: 8.354 min  
 Delta R.T.: -0.009 min  
 Response: 53890183  
 Conc: 442.69 ng/ml

Instrument :  
 ECD\_P  
 ClientSampleId :



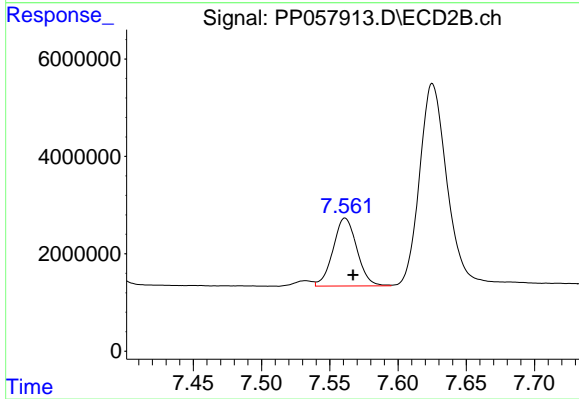
#37 AR-1262-2

R.T.: 7.033 min  
 Delta R.T.: -0.006 min  
 Response: 37624906  
 Conc: 303.50 ng/ml



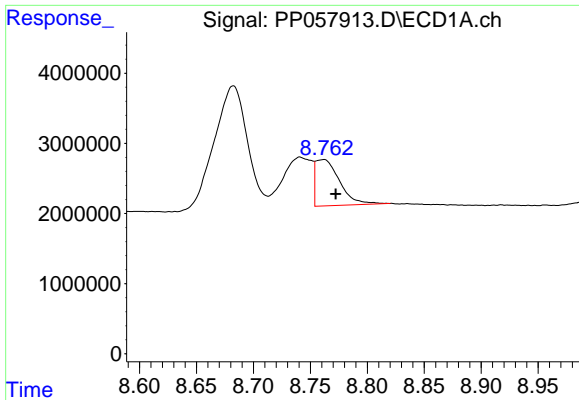
#38 AR-1262-3

R.T.: 8.682 min  
 Delta R.T.: 0.001 min  
 Response: 35774199  
 Conc: 411.48 ng/ml



#38 AR-1262-3

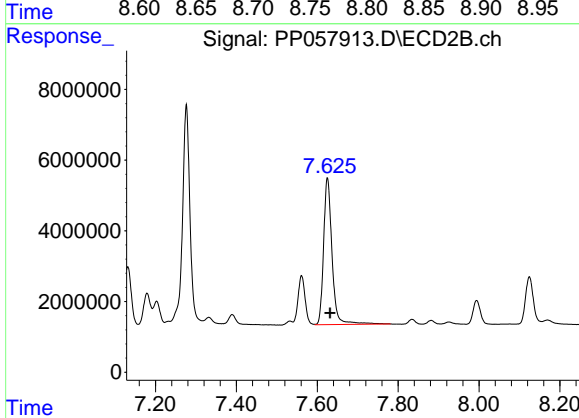
R.T.: 7.561 min  
 Delta R.T.: -0.006 min  
 Response: 16909787  
 Conc: 180.21 ng/ml



#39 AR-1262-4

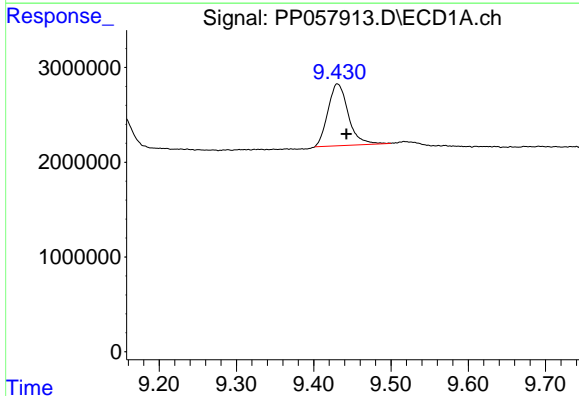
R.T.: 8.762 min  
 Delta R.T.: -0.011 min  
 Response: 9657019  
 Conc: 144.06 ng/ml

Instrument :  
 ECD\_P  
 ClientSampleId :



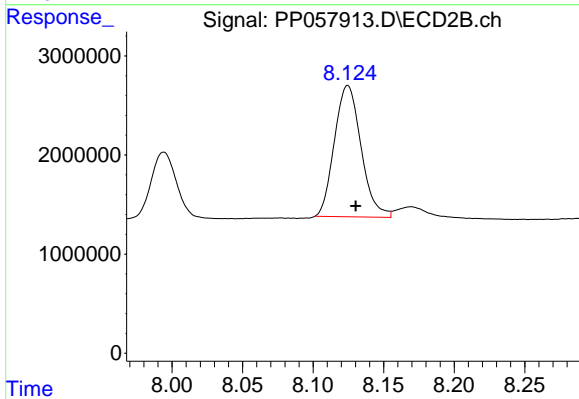
#39 AR-1262-4

R.T.: 7.625 min  
 Delta R.T.: -0.006 min  
 Response: 60081953  
 Conc: 352.69 ng/ml



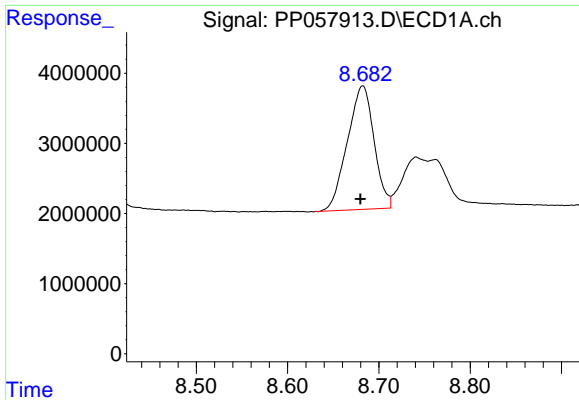
#40 AR-1262-5

R.T.: 9.431 min  
 Delta R.T.: -0.012 min  
 Response: 11978166  
 Conc: 312.84 ng/ml



#40 AR-1262-5

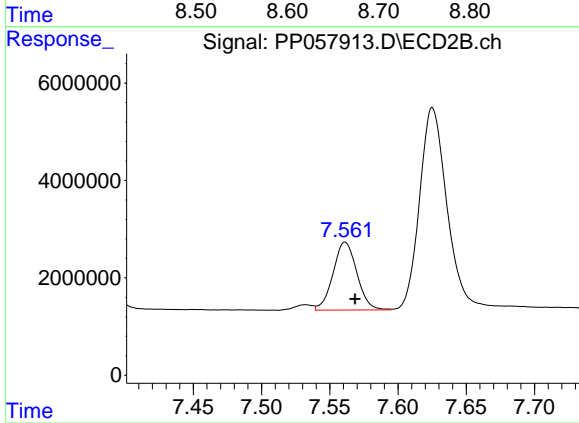
R.T.: 8.125 min  
 Delta R.T.: -0.006 min  
 Response: 17419800  
 Conc: 236.69 ng/ml



#41 AR-1268-1

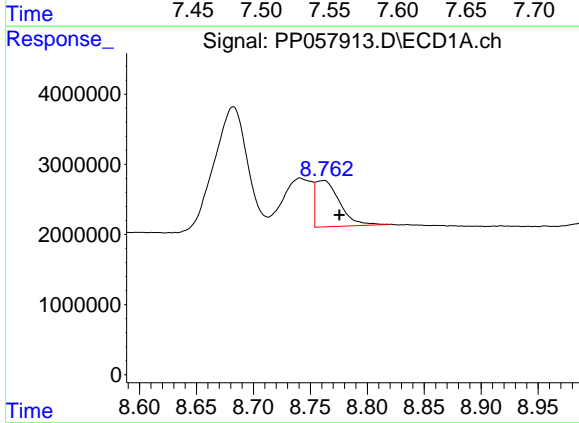
R.T.: 8.682 min  
 Delta R.T.: 0.003 min  
 Response: 35774199  
 Conc: 229.75 ng/ml

Instrument :  
 ECD\_P  
 ClientSampleId :



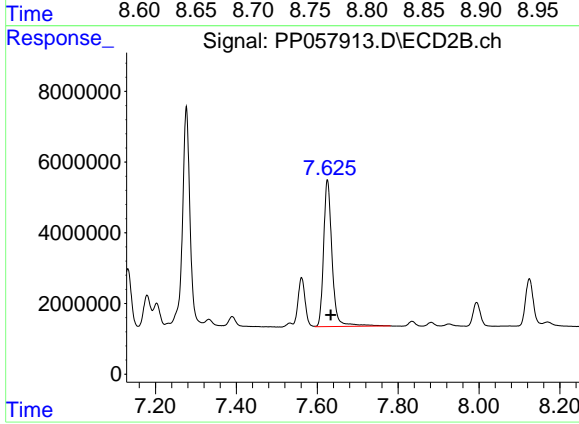
#41 AR-1268-1

R.T.: 7.561 min  
 Delta R.T.: -0.007 min  
 Response: 16909787  
 Conc: 64.24 ng/ml



#42 AR-1268-2

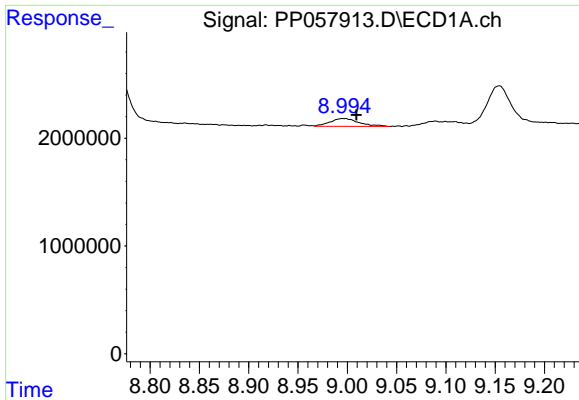
R.T.: 8.762 min  
 Delta R.T.: -0.014 min  
 Response: 9657019  
 Conc: 74.01 ng/ml



#42 AR-1268-2

R.T.: 7.625 min  
 Delta R.T.: -0.008 min  
 Response: 60081953  
 Conc: 245.40 ng/ml

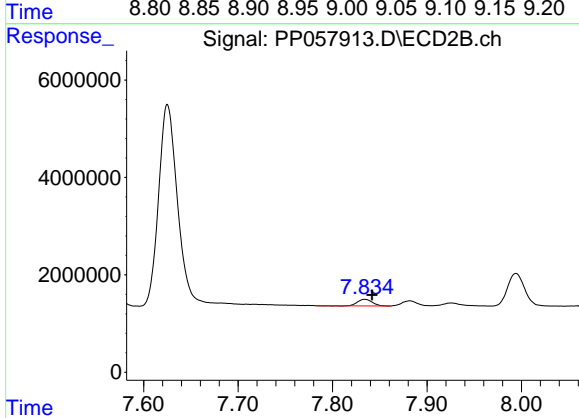




#43 AR-1268-3

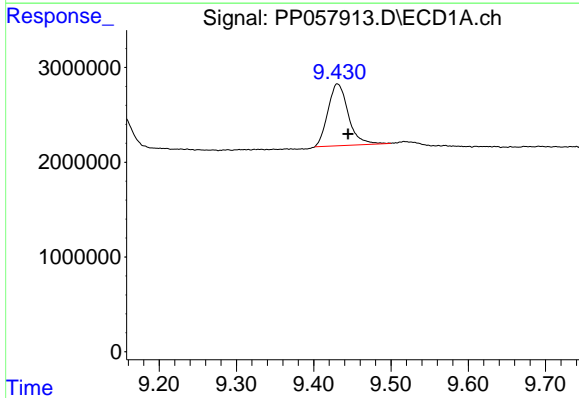
R.T.: 8.997 min  
 Delta R.T.: -0.013 min  
 Response: 1462799  
 Conc: 11.33 ng/ml

Instrument :  
 ECD\_P  
 ClientSampleId :



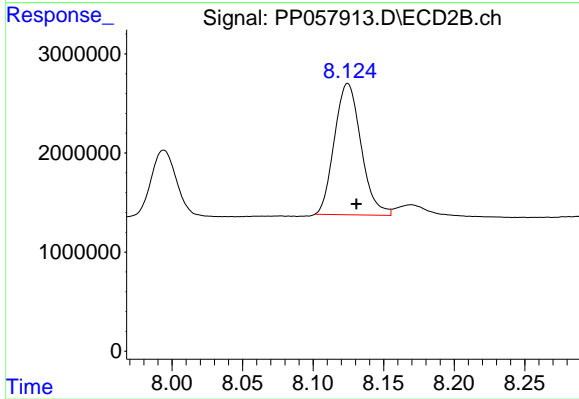
#43 AR-1268-3

R.T.: 7.834 min  
 Delta R.T.: -0.008 min  
 Response: 1373484  
 Conc: 6.77 ng/ml



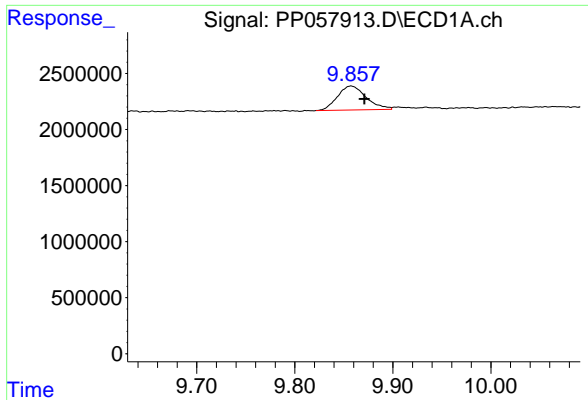
#44 AR-1268-4

R.T.: 9.431 min  
 Delta R.T.: -0.014 min  
 Response: 11978166  
 Conc: 282.84 ng/ml



#44 AR-1268-4

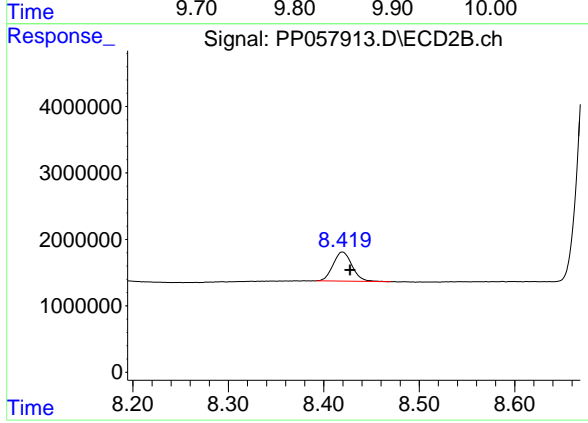
R.T.: 8.125 min  
 Delta R.T.: -0.006 min  
 Response: 17419800  
 Conc: 210.33 ng/ml



#45 AR-1268-5

R.T.: 9.857 min  
Delta R.T.: -0.013 min  
Response: 4364713  
Conc: 13.35 ng/ml

Instrument :  
ECD\_P  
ClientSampleId :



#45 AR-1268-5

R.T.: 8.420 min  
Delta R.T.: -0.008 min  
Response: 6038094  
Conc: 11.68 ng/ml