

Data Path : Z:\pestpcbsrv\HPCHEM1\ECD_P\Data\PP052621\
 Data File : PP036112.D
 Signal(s) : Signal #1: ECD1A.CH Signal #2: ECD2B.CH
 Acq On : 26 May 2021 10:03
 Operator : DD\AJ
 Sample : M2262-01
 Misc : AR1660 LOD 25 PPB
 ALS Vial : 5 Sample Multiplier: 1

Instrument :
 ECD_P
 ClientSampled :

Integration File signal 1: autoint1.e
 Integration File signal 2: autoint2.e
 Quant Time: May 26 12:39:11 2021
 Quant Method : Z:\pestpcbsrv\HPCHEM1\ECD_P\methods\PP052521.M
 Quant Title : GC EXTRACTABLES
 QLast Update : Wed May 26 00:48:29 2021
 Response via : Initial Calibration
 Integrator: ChemStation 6890 Scale Mode: Small noise peaks clipped

Volume Inj. : 2 µl
 Signal #1 Phase : ZB-MR1 Signal #2 Phase: ZB-MR2
 Signal #1 Info : 30Mx0.32mmx 0.50µ Signal #2 Info : 30M x 0.32mm x 0.25µm

| Compound | RT#1 | RT#2 | Resp#1 | Resp#2 | ng/ml | ng/ml |
|-----------------------------|--------|-------|--------|--------|--------|----------|
| System Monitoring Compounds | | | | | | |
| 1) SA Tetrachlo... | 4.965 | 3.964 | 800133 | 498359 | 17.977 | 17.856 |
| 2) SA Decachlor... | 10.991 | 9.273 | 820411 | 412790 | 19.197 | 17.993 |
| Target Compounds | | | | | | |
| 3) L1 AR-1016-1 | 6.284 | 5.220 | 48905 | 25331 | 30.512 | 27.195 |
| 4) L1 AR-1016-2 | 6.308 | 5.240 | 68435 | 34096 | 30.201 | 26.098 |
| 5) L1 AR-1016-3 | 6.374 | 5.430 | 43813 | 17851 | 30.256 | 25.245 |
| 6) L1 AR-1016-4 | 6.481 | 5.483 | 33665 | 12567 | 27.801 | 23.656 |
| 7) L1 AR-1016-5 | 6.795 | 5.712 | 34471 | 17603 | 29.108 | 25.693 |
| 9) L2 AR-1221-2 | 5.315 | 0.000 | 19030 | 0 | 45.655 | N.D. # |
| 10) L2 AR-1221-3 | 5.400 | 4.410 | 26348 | 13098 | 21.000 | 16.970 |
| 11) L3 AR-1232-1 | 5.400 | 4.410 | 26348 | 13098 | 27.268 | 22.392 |
| 12) L3 AR-1232-2 | 5.990 | 5.240 | 36338 | 34096 | 72.313 | 65.040 |
| 13) L3 AR-1232-3 | 6.308 | 5.430 | 68435 | 17851 | 73.430 | 64.438 |
| 14) L3 AR-1232-4 | 6.481 | 5.529 | 33665 | 14360 | 69.629 | 63.287 |
| 15) L3 AR-1232-5 | 6.578 | 5.712 | 31086 | 17603 | 96.712 | 70.632 # |
| 16) L4 AR-1242-1 | 6.284 | 5.220 | 48905 | 25331 | 40.603 | 35.182 |
| 17) L4 AR-1242-2 | 6.308 | 5.240 | 68435 | 34096 | 40.627 | 34.853 |
| 18) L4 AR-1242-3 | 6.374 | 5.430 | 43813 | 17851 | 39.918 | 33.281 |
| 19) L4 AR-1242-4 | 6.481 | 5.529 | 33665 | 14360 | 36.864 | 29.099 |
| 20) L4 AR-1242-5 | 0.000 | 6.091 | 0 | 11522 | N.D. | 17.805 # |
| 21) L5 AR-1248-1 | 6.284 | 5.220 | 48905 | 25331 | 52.530 | 47.219 |
| 22) L5 AR-1248-2 | 6.578 | 5.483 | 31086 | 12567 | 26.001 | 18.008 # |
| 23) L5 AR-1248-3 | 6.795 | 5.529 | 34471 | 14360 | 23.791 | 19.953 |
| 24) L5 AR-1248-4 | 7.224 | 5.712 | 6078 | 17603 | 3.816 | 19.931 # |
| 26) L6 AR-1254-1 | 7.193 | 6.091 | 33553 | 11522 | 20.710 | 8.817 # |
| 27) L6 AR-1254-2 | 7.422 | 6.252 | 27871 | 12527 | 11.314 | 10.865 |
| 28) L6 AR-1254-3 | 7.804 | 6.675 | 16310 | 7025 | 6.183 | 3.690 # |
| 29) L6 AR-1254-4 | 8.098 | 0.000 | 16276 | 0 | 8.064 | N.D. # |
| 30) L6 AR-1254-5 | 8.526 | 7.342 | 89163 | 49088 | 39.295 | 28.773 # |
| 31) L7 AR-1260-1 | 7.970 | 6.811 | 61029 | 37388 | 30.127 | 29.966 |
| 32) L7 AR-1260-2 | 8.235 | 7.008 | 107695 | 37767 | 44.084 | 25.062 # |
| 33) L7 AR-1260-3 | 8.600 | 7.163 | 71352 | 41841 | 38.422 | 29.771 |
| 34) L7 AR-1260-4 | 8.830 | 7.648 | 76782 | 37148 | 34.384 | 31.774 |
| 35) L7 AR-1260-5 | 9.158 | 7.895 | 137653 | 89255 | 32.239 | 32.243 |
| 36) L8 AR-1262-1 | 8.600 | 7.342 | 71352 | 49088 | 28.308 | 54.297 # |
| 37) L8 AR-1262-2 | 9.158 | 7.895 | 137653 | 89255 | 30.546 | 29.980 |
| 38) L8 AR-1262-3 | 9.493f | 8.186 | 72338 | 35607 | 22.417 | 29.966 # |
| 39) L8 AR-1262-4 | 9.545f | 8.246 | 51105 | 69301 | 19.055 | 31.435 # |
| 40) L8 AR-1262-5 | 10.236 | 8.745 | 39200 | 20344 | 22.008 | 20.002 |
| 41) L9 AR-1268-1 | 9.493f | 8.186 | 72338 | 35607 | 13.970 | 10.484 |
| 42) L9 AR-1268-2 | 9.545f | 8.246 | 51105 | 69301 | 10.225 | 22.439 # |
| 44) L9 AR-1268-4 | 10.236 | 8.745 | 39200 | 20344 | 20.089 | 18.463 |

Data Path : Z:\pestpcbsrv\HPCHEM1\ECD_P\Data\PP052621\
 Data File : PP036112.D
 Signal(s) : Signal #1: ECD1A.CH Signal #2: ECD2B.CH
 Acq On : 26 May 2021 10:03
 Operator : DD\AJ
 Sample : M2262-01
 Misc : AR1660 LOD 25 PPB
 ALS Vial : 5 Sample Multiplier: 1

Instrument :
 ECD_P
 ClientSampleId :

Integration File signal 1: autoint1.e
 Integration File signal 2: autoint2.e
 Quant Time: May 26 12:39:11 2021
 Quant Method : Z:\pestpcbsrv\HPCHEM1\ECD_P\methods\PP052521.M
 Quant Title : GC EXTRACTABLES
 QLast Update : Wed May 26 00:48:29 2021
 Response via : Initial Calibration
 Integrator: ChemStation 6890 Scale Mode: Small noise peaks clipped

Volume Inj. : 2 µl
 Signal #1 Phase : ZB-MR1 Signal #2 Phase: ZB-MR2
 Signal #1 Info : 30Mx0.32mmx 0.50µ Signal #2 Info : 30M x 0.32mm x 0.25µm

| | Compound | RT#1 | RT#2 | Resp#1 | Resp#2 | ng/ml | ng/ml |
|-----|--------------|--------|-------|--------|--------|-------|---------|
| 45) | L9 AR-1268-5 | 10.651 | 9.026 | 18090 | 4795 | 1.339 | 0.562 # |

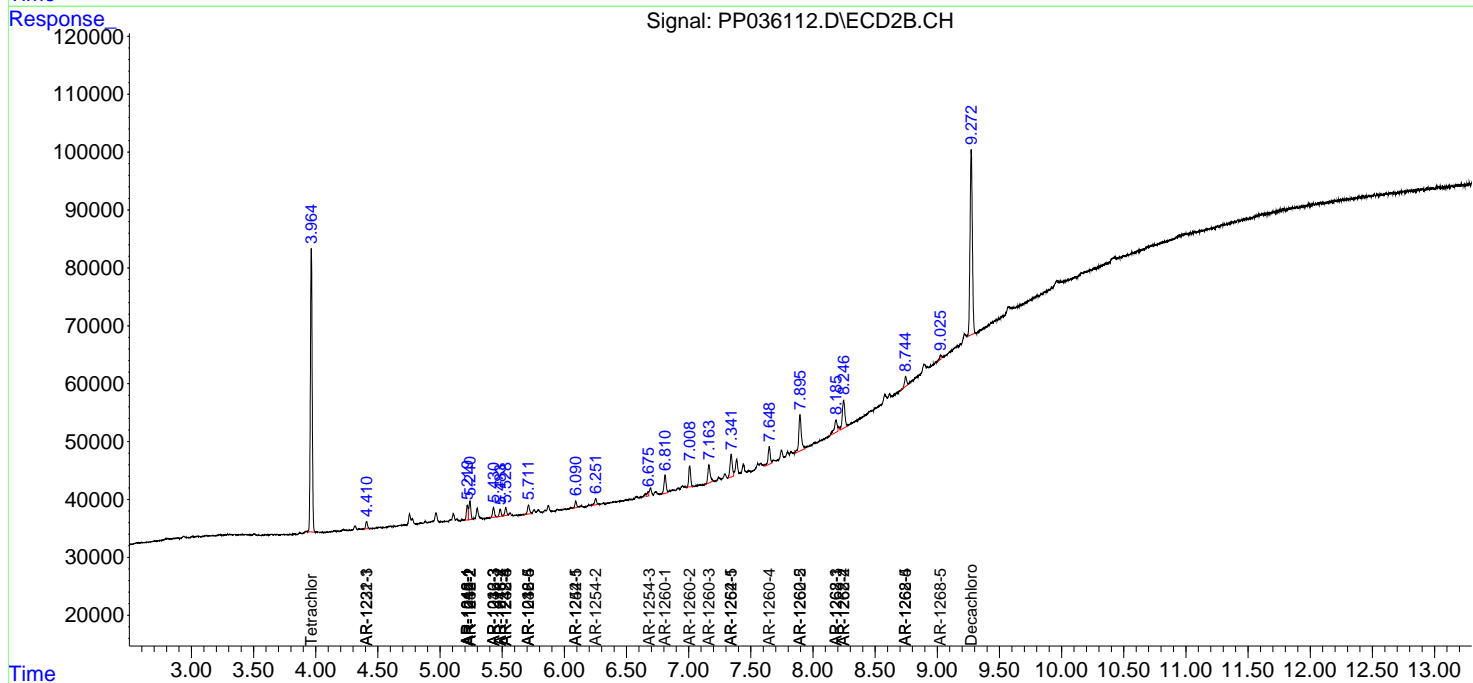
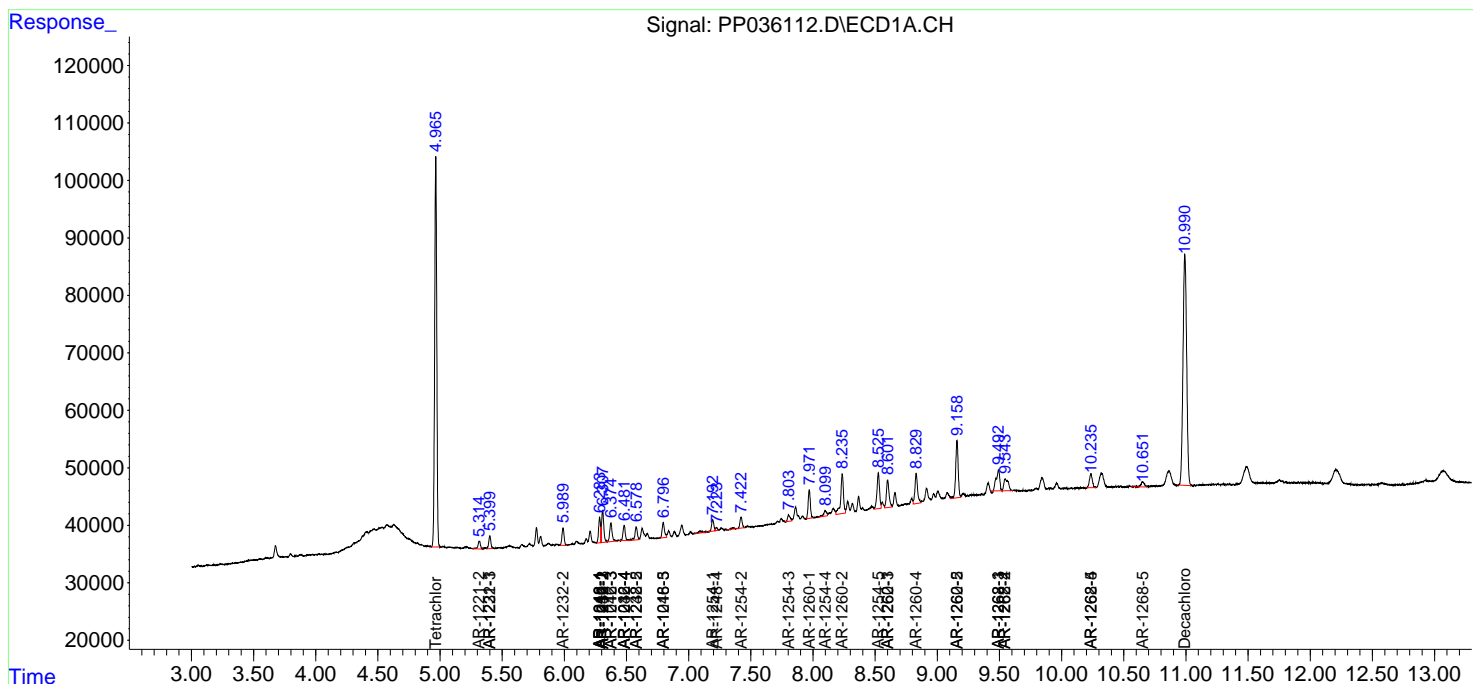
(f)=RT Delta > 1/2 Window (#)=Amounts differ by > 25% (m)=manual int.

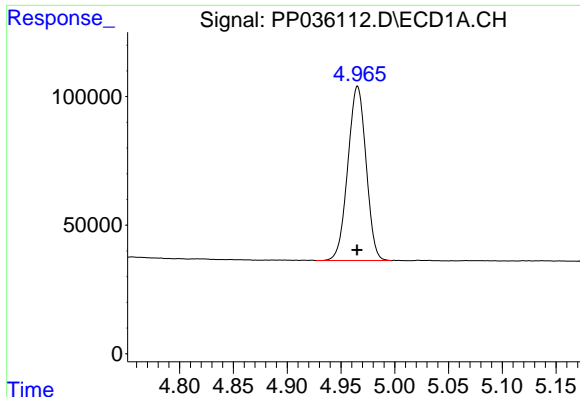
Data Path : Z:\pestpcbsrv\HPCHEM1\ECD_P\Data\PP052621\
 Data File : PP036112.D
 Signal(s) : Signal #1: ECD1A.CH Signal #2: ECD2B.CH
 Acq On : 26 May 2021 10:03
 Operator : DD\AJ
 Sample : M2262-01
 Misc : AR1660 LOD 25 PPB
 ALS Vial : 5 Sample Multiplier: 1

Instrument :
 ECD_P
 ClientSampled :

Integration File signal 1: autoint1.e
 Integration File signal 2: autoint2.e
 Quant Time: May 26 12:39:11 2021
 Quant Method : Z:\pestpcbsrv\HPCHEM1\ECD_P\methods\PP052521.M
 Quant Title : GC EXTRACTABLES
 QLast Update : Wed May 26 00:48:29 2021
 Response via : Initial Calibration
 Integrator: ChemStation 6890 Scale Mode: Small noise peaks clipped

Volume Inj. : 2 µl
 Signal #1 Phase : ZB-MR1 Signal #2 Phase: ZB-MR2
 Signal #1 Info : 30Mx0.32mmx 0.50µ Signal #2 Info : 30M x 0.32mm x 0.25µm

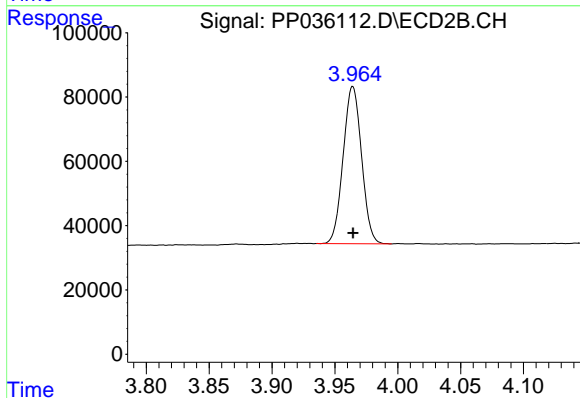




#1 Tetrachloro-m-xylene

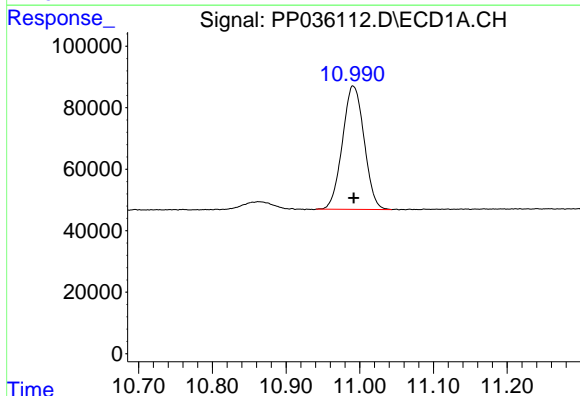
R.T.: 4.965 min
 Delta R.T.: 0.000 min
 Response: 800133
 Conc: 17.98 ng/ml

Instrument :
 ECD_P
 ClientSampleId :



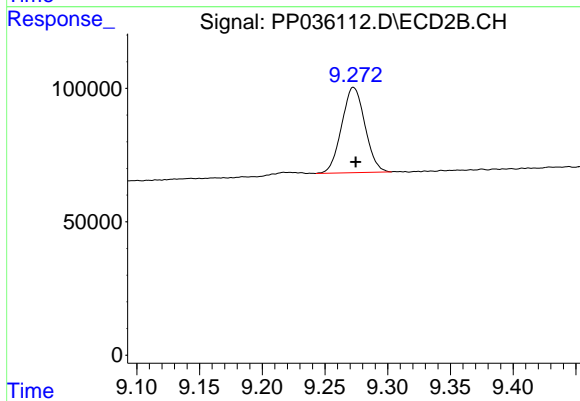
#1 Tetrachloro-m-xylene

R.T.: 3.964 min
 Delta R.T.: 0.000 min
 Response: 498359
 Conc: 17.86 ng/ml



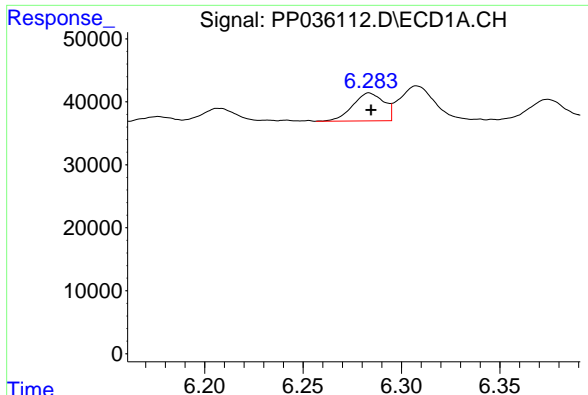
#2 Decachlorobiphenyl

R.T.: 10.991 min
 Delta R.T.: -0.001 min
 Response: 820411
 Conc: 19.20 ng/ml



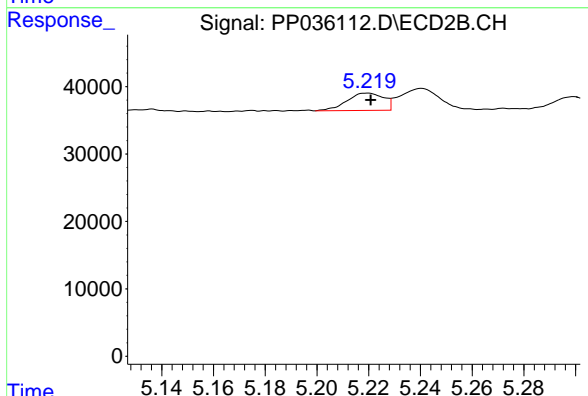
#2 Decachlorobiphenyl

R.T.: 9.273 min
 Delta R.T.: -0.002 min
 Response: 412790
 Conc: 17.99 ng/ml

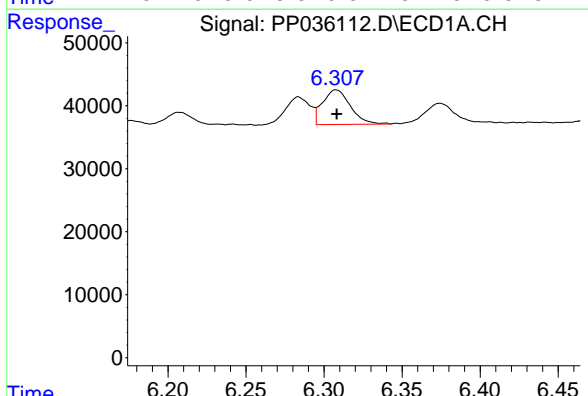


#3 AR-1016-1
 R.T.: 6.284 min
 Delta R.T.: 0.000 min
 Response: 48905
 Conc: 30.51 ng/ml

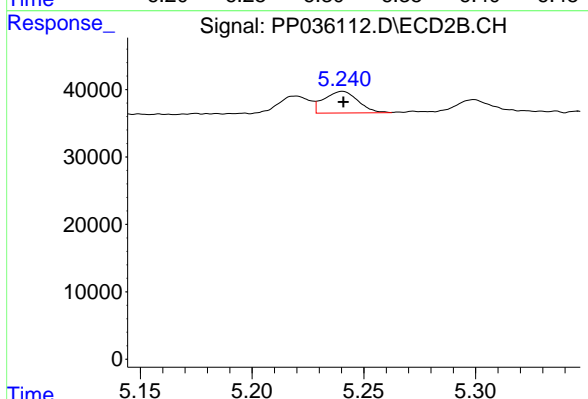
Instrument :
 ECD_P
 ClientSampleId :



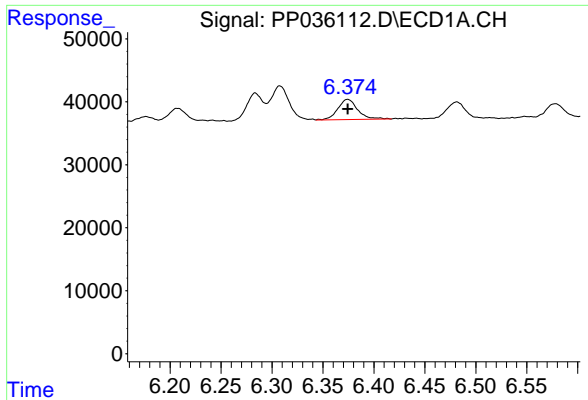
#3 AR-1016-1
 R.T.: 5.220 min
 Delta R.T.: -0.001 min
 Response: 25331
 Conc: 27.19 ng/ml



#4 AR-1016-2
 R.T.: 6.308 min
 Delta R.T.: 0.000 min
 Response: 68435
 Conc: 30.20 ng/ml

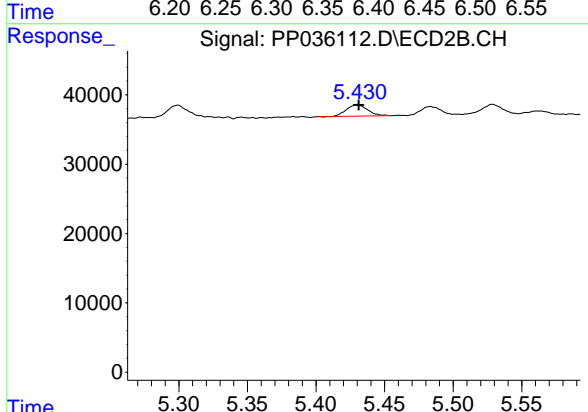


#4 AR-1016-2
 R.T.: 5.240 min
 Delta R.T.: 0.000 min
 Response: 34096
 Conc: 26.10 ng/ml

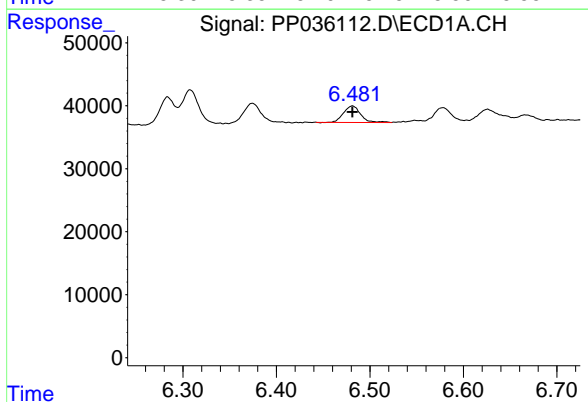


#5 AR-1016-3
 R.T.: 6.374 min
 Delta R.T.: 0.000 min
 Response: 43813
 Conc: 30.26 ng/ml

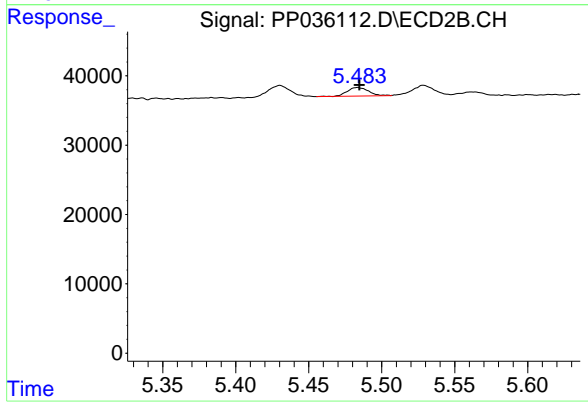
Instrument :
 ECD_P
 ClientSampleId :



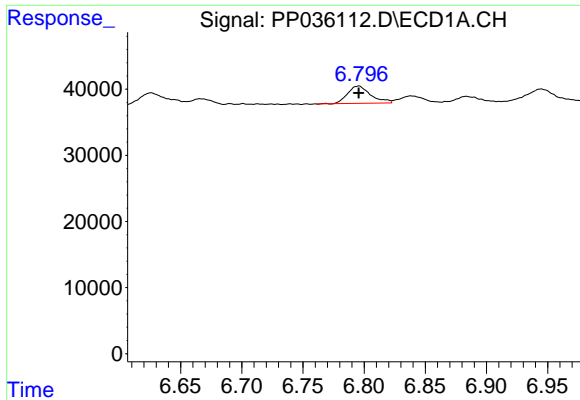
#5 AR-1016-3
 R.T.: 5.430 min
 Delta R.T.: 0.000 min
 Response: 17851
 Conc: 25.24 ng/ml



#6 AR-1016-4
 R.T.: 6.481 min
 Delta R.T.: 0.000 min
 Response: 33665
 Conc: 27.80 ng/ml



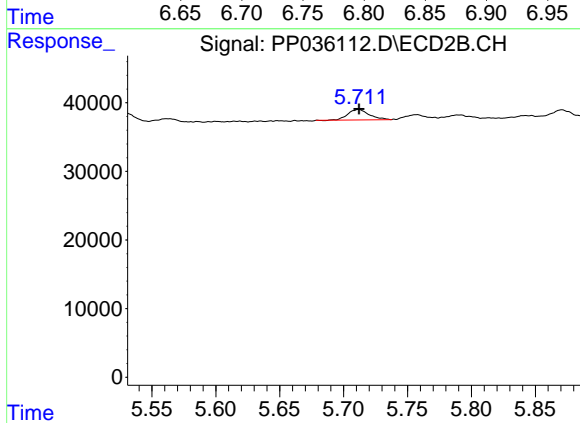
#6 AR-1016-4
 R.T.: 5.483 min
 Delta R.T.: -0.001 min
 Response: 12567
 Conc: 23.66 ng/ml



#7 AR-1016-5

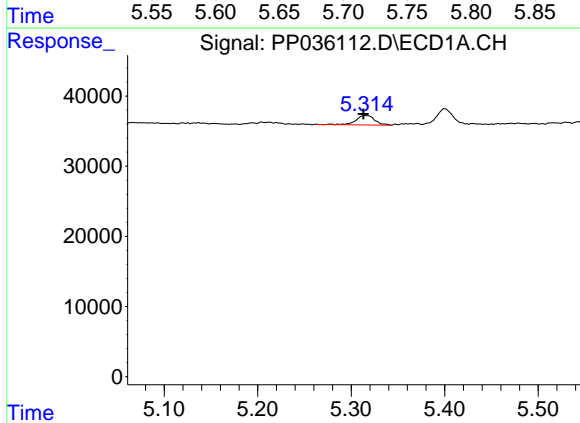
R.T.: 6.795 min
 Delta R.T.: 0.000 min
 Response: 34471
 Conc: 29.11 ng/ml

Instrument :
 ECD_P
 ClientSampleId :



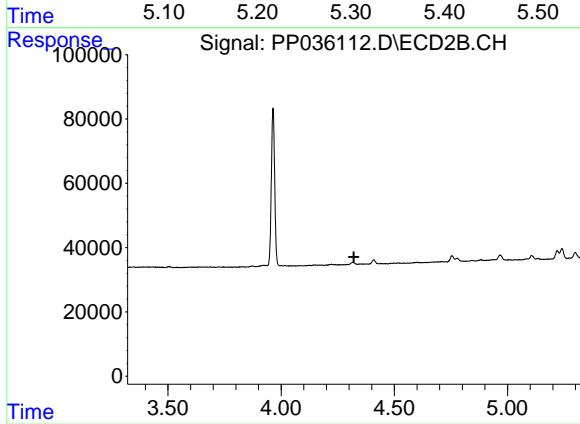
#7 AR-1016-5

R.T.: 5.712 min
 Delta R.T.: 0.000 min
 Response: 17603
 Conc: 25.69 ng/ml



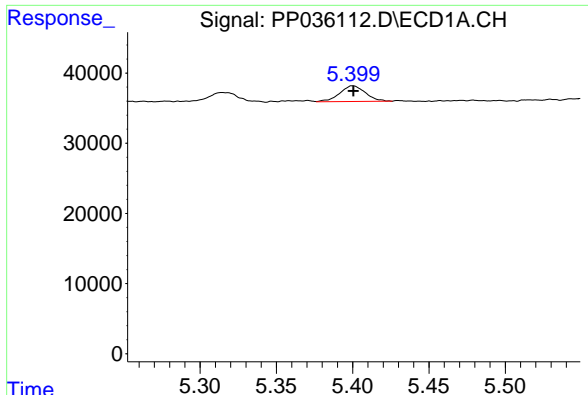
#9 AR-1221-2

R.T.: 5.315 min
 Delta R.T.: 0.002 min
 Response: 19030
 Conc: 45.65 ng/ml



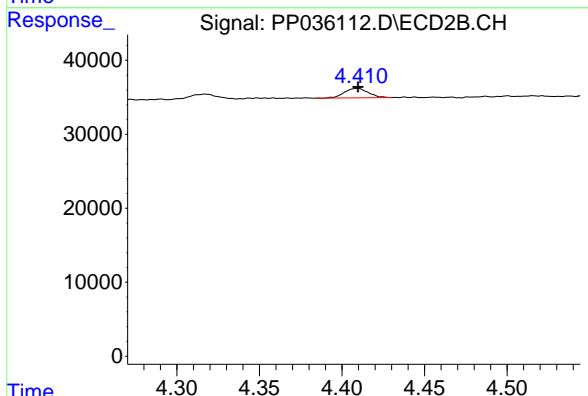
#9 AR-1221-2

R.T.: 0.000 min
 Exp R.T. : 4.322 min
 Response: 0
 Conc: N.D.

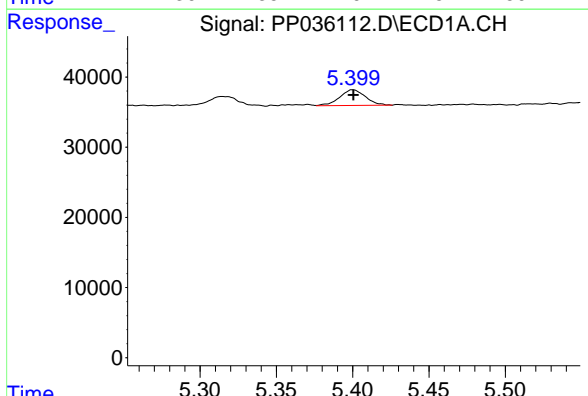


#10 AR-1221-3
 R.T.: 5.400 min
 Delta R.T.: 0.000 min
 Response: 26348
 Conc: 21.00 ng/ml

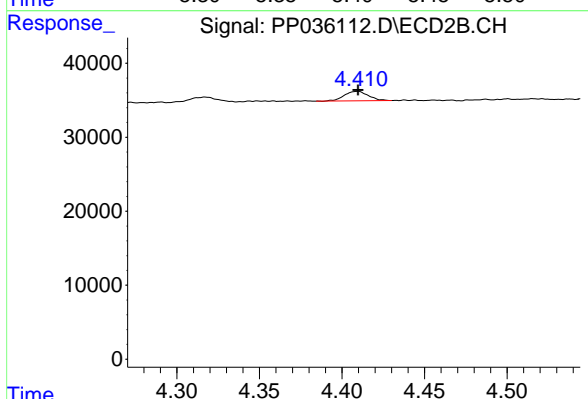
Instrument :
 ECD_P
 ClientSampled :



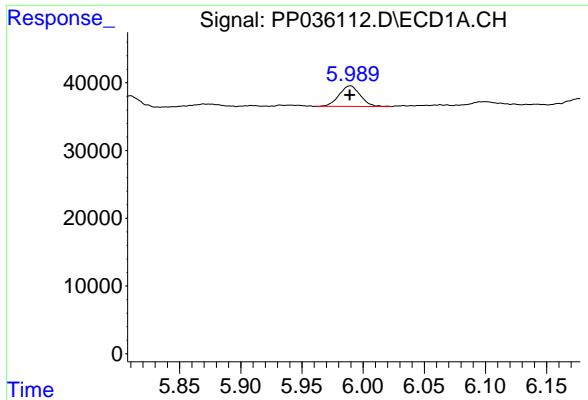
#10 AR-1221-3
 R.T.: 4.410 min
 Delta R.T.: 0.000 min
 Response: 13098
 Conc: 16.97 ng/ml



#11 AR-1232-1
 R.T.: 5.400 min
 Delta R.T.: 0.000 min
 Response: 26348
 Conc: 27.27 ng/ml

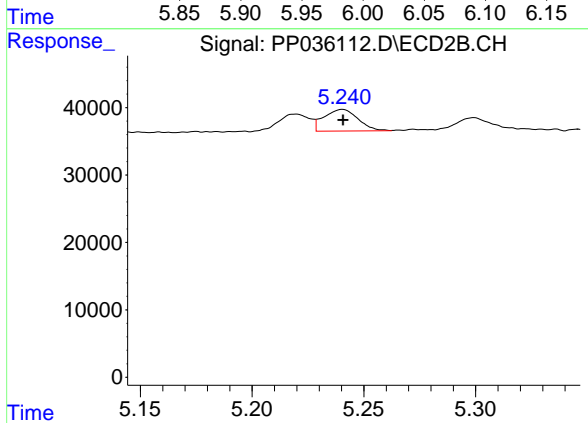


#11 AR-1232-1
 R.T.: 4.410 min
 Delta R.T.: 0.000 min
 Response: 13098
 Conc: 22.39 ng/ml

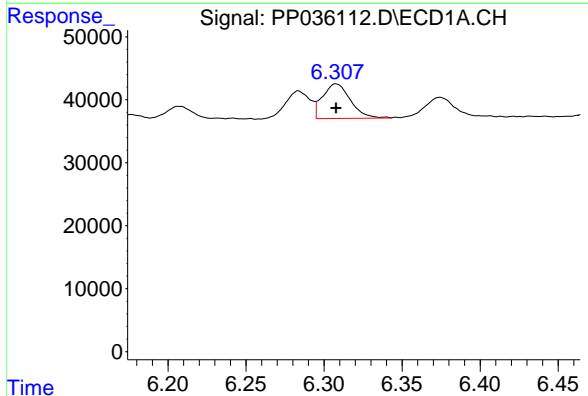


#12 AR-1232-2
 R.T.: 5.990 min
 Delta R.T.: 0.000 min
 Response: 36338
 Conc: 72.31 ng/ml

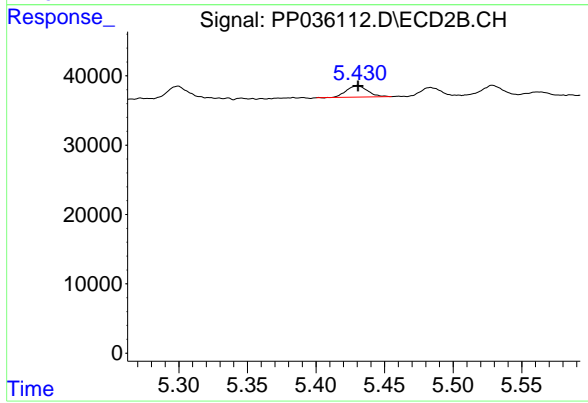
Instrument :
 ECD_P
 ClientSampleId :



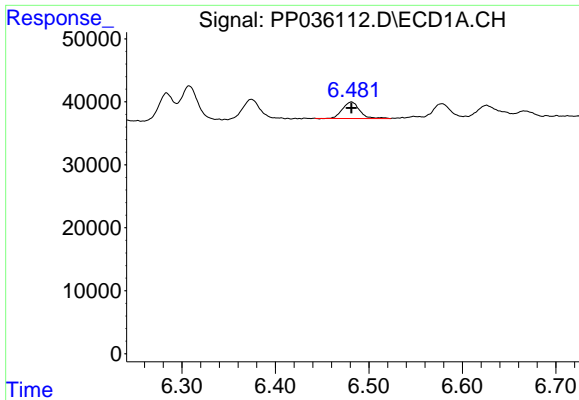
#12 AR-1232-2
 R.T.: 5.240 min
 Delta R.T.: 0.000 min
 Response: 34096
 Conc: 65.04 ng/ml



#13 AR-1232-3
 R.T.: 6.308 min
 Delta R.T.: 0.000 min
 Response: 68435
 Conc: 73.43 ng/ml

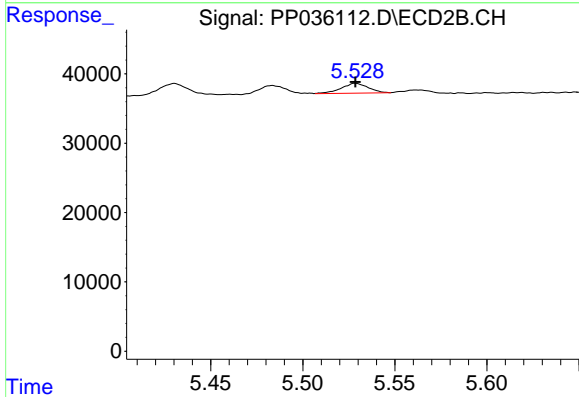


#13 AR-1232-3
 R.T.: 5.430 min
 Delta R.T.: 0.000 min
 Response: 17851
 Conc: 64.44 ng/ml

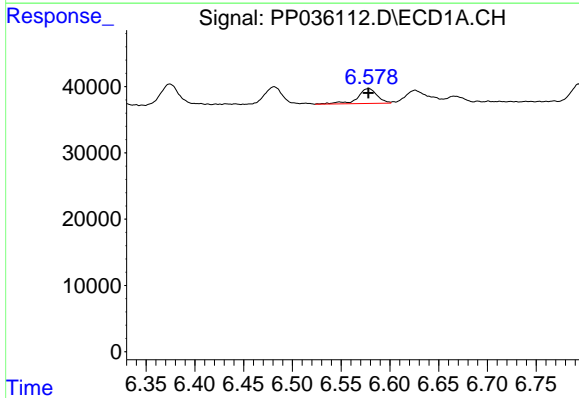


#14 AR-1232-4
 R.T.: 6.481 min
 Delta R.T.: 0.000 min
 Response: 33665
 Conc: 69.63 ng/ml

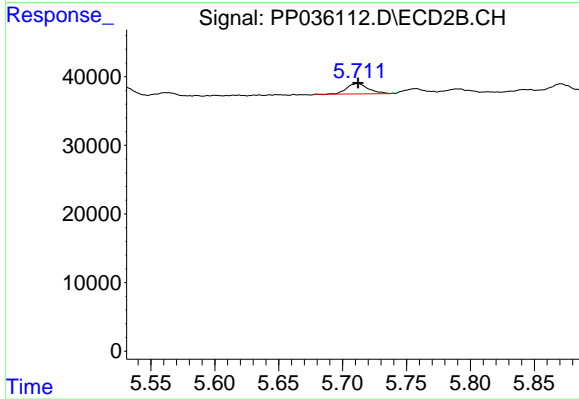
Instrument :
 ECD_P
 ClientSampleId :



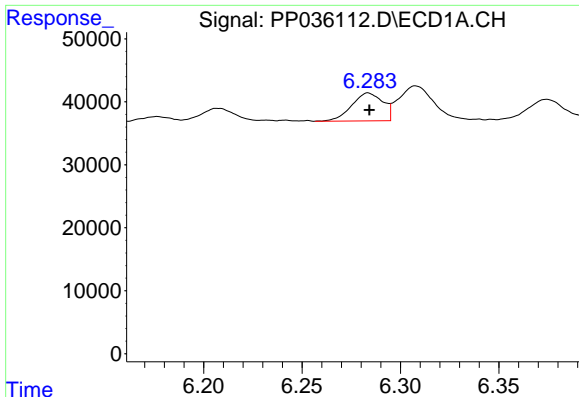
#14 AR-1232-4
 R.T.: 5.529 min
 Delta R.T.: 0.000 min
 Response: 14360
 Conc: 63.29 ng/ml



#15 AR-1232-5
 R.T.: 6.578 min
 Delta R.T.: 0.000 min
 Response: 31086
 Conc: 96.71 ng/ml



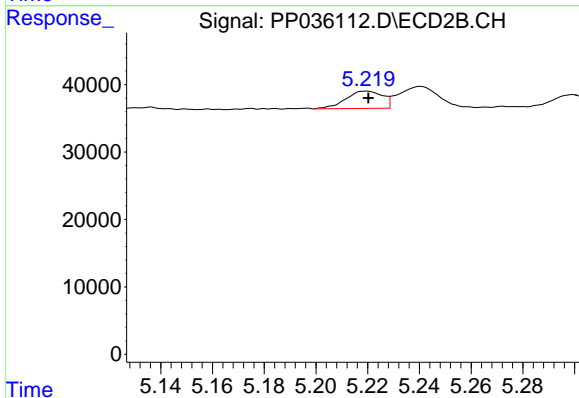
#15 AR-1232-5
 R.T.: 5.712 min
 Delta R.T.: 0.000 min
 Response: 17603
 Conc: 70.63 ng/ml



#16 AR-1242-1

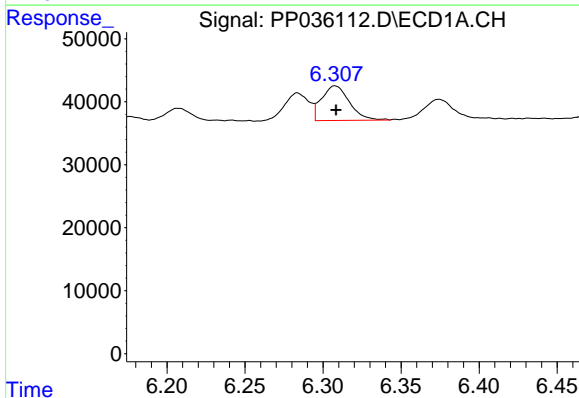
R.T.: 6.284 min
 Delta R.T.: 0.000 min
 Response: 48905
 Conc: 40.60 ng/ml

Instrument :
 ECD_P
 ClientSampled :



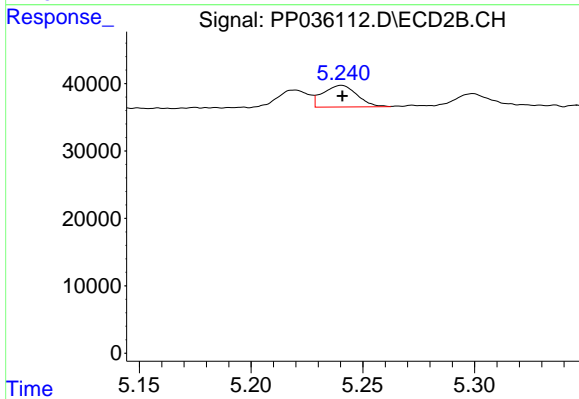
#16 AR-1242-1

R.T.: 5.220 min
 Delta R.T.: 0.000 min
 Response: 25331
 Conc: 35.18 ng/ml



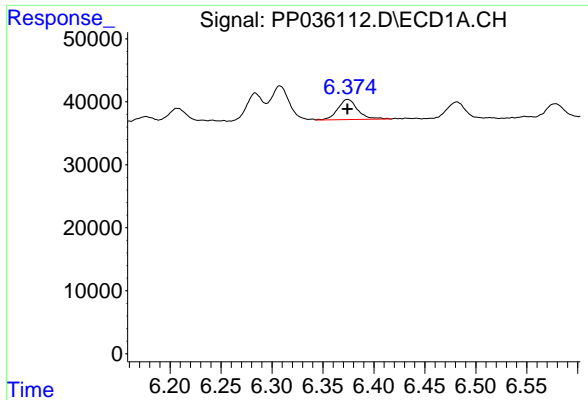
#17 AR-1242-2

R.T.: 6.308 min
 Delta R.T.: 0.000 min
 Response: 68435
 Conc: 40.63 ng/ml



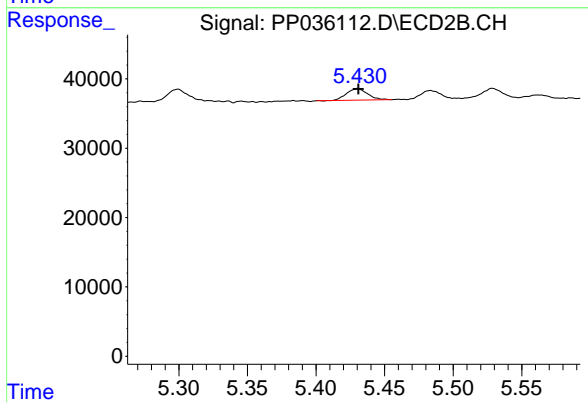
#17 AR-1242-2

R.T.: 5.240 min
 Delta R.T.: 0.000 min
 Response: 34096
 Conc: 34.85 ng/ml

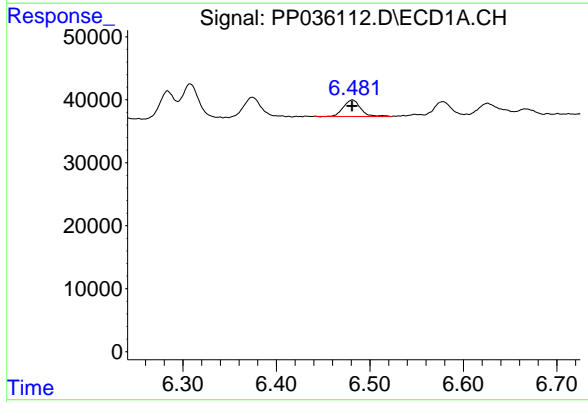


#18 AR-1242-3
 R.T.: 6.374 min
 Delta R.T.: 0.000 min
 Response: 43813
 Conc: 39.92 ng/ml

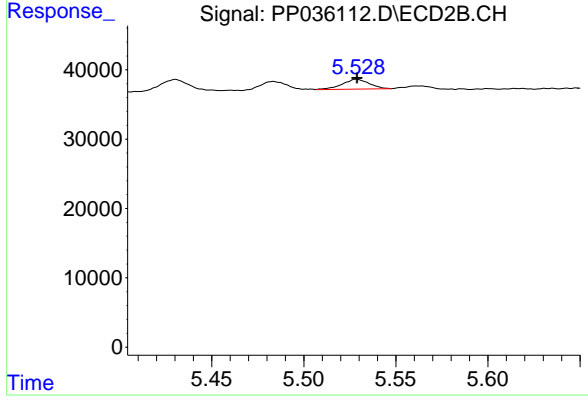
Instrument :
 ECD_P
 ClientSampleId :



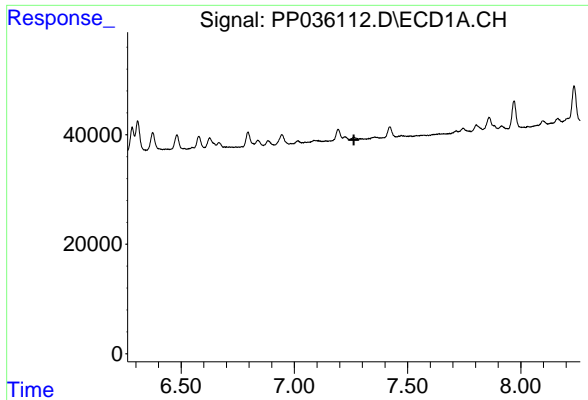
#18 AR-1242-3
 R.T.: 5.430 min
 Delta R.T.: 0.000 min
 Response: 17851
 Conc: 33.28 ng/ml



#19 AR-1242-4
 R.T.: 6.481 min
 Delta R.T.: 0.000 min
 Response: 33665
 Conc: 36.86 ng/ml



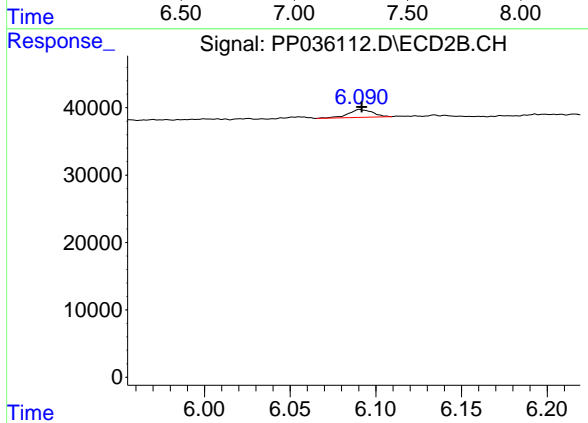
#19 AR-1242-4
 R.T.: 5.529 min
 Delta R.T.: 0.000 min
 Response: 14360
 Conc: 29.10 ng/ml



#20 AR-1242-5

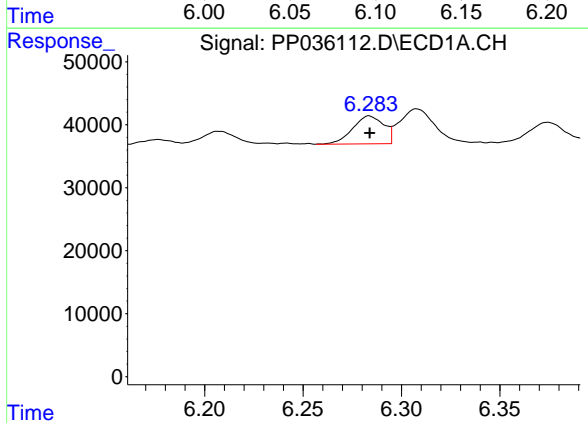
R.T.: 0.000 min
 Exp R.T.: 7.263 min
 Response: 0
 Conc: N.D.

Instrument :
 ECD_P
 ClientSampled :



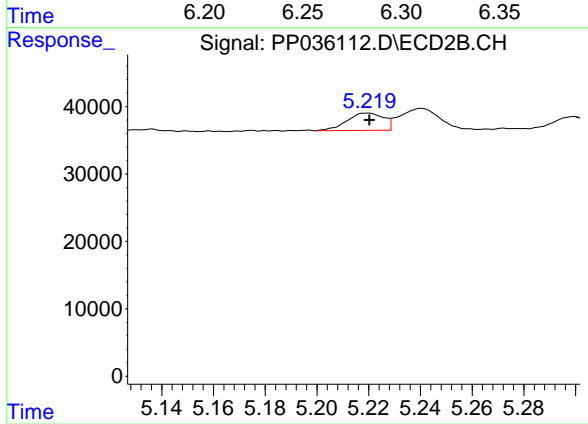
#20 AR-1242-5

R.T.: 6.091 min
 Delta R.T.: -0.001 min
 Response: 11522
 Conc: 17.80 ng/ml



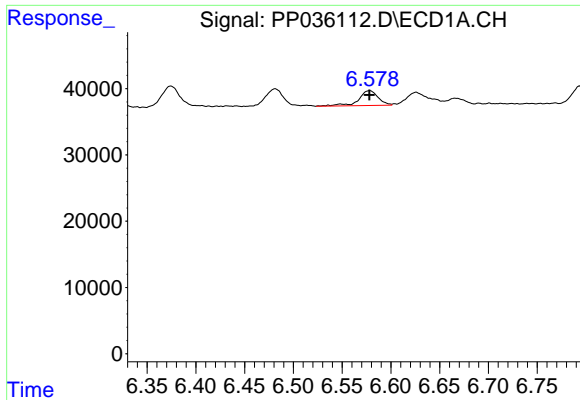
#21 AR-1248-1

R.T.: 6.284 min
 Delta R.T.: 0.000 min
 Response: 48905
 Conc: 52.53 ng/ml



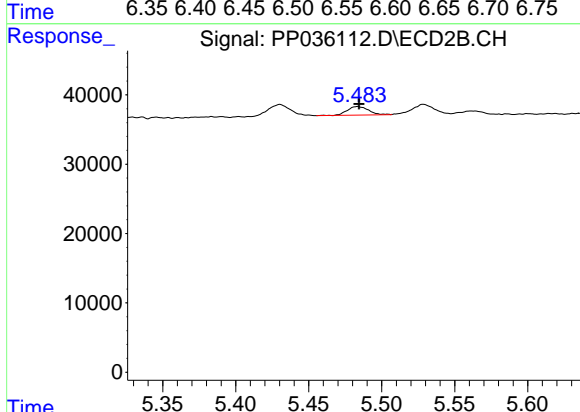
#21 AR-1248-1

R.T.: 5.220 min
 Delta R.T.: 0.000 min
 Response: 25331
 Conc: 47.22 ng/ml

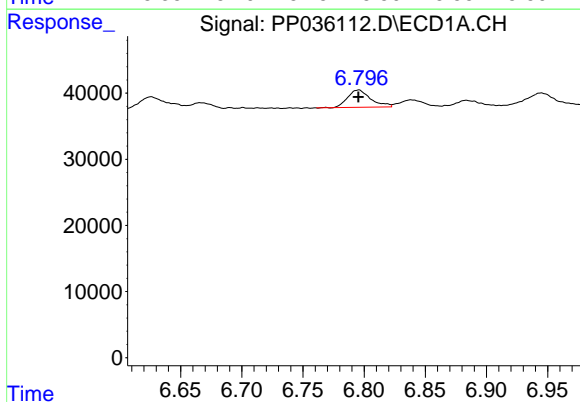


#22 AR-1248-2
 R.T.: 6.578 min
 Delta R.T.: 0.000 min
 Response: 31086
 Conc: 26.00 ng/ml

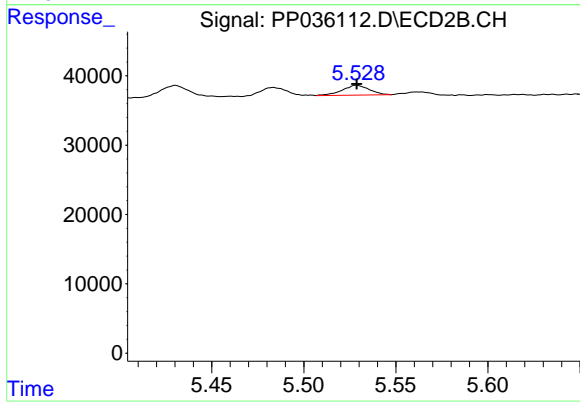
Instrument :
 ECD_P
 ClientSampleId :



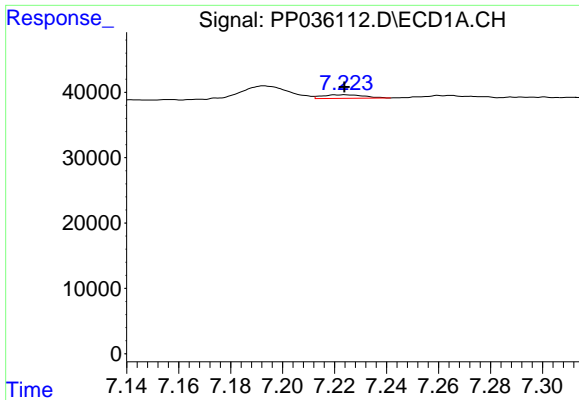
#22 AR-1248-2
 R.T.: 5.483 min
 Delta R.T.: 0.000 min
 Response: 12567
 Conc: 18.01 ng/ml



#23 AR-1248-3
 R.T.: 6.795 min
 Delta R.T.: 0.000 min
 Response: 34471
 Conc: 23.79 ng/ml



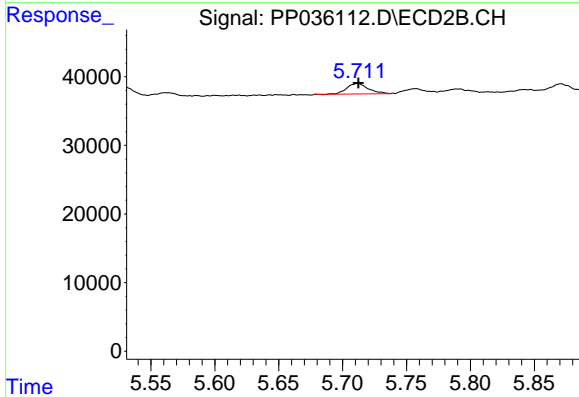
#23 AR-1248-3
 R.T.: 5.529 min
 Delta R.T.: 0.000 min
 Response: 14360
 Conc: 19.95 ng/ml



#24 AR-1248-4

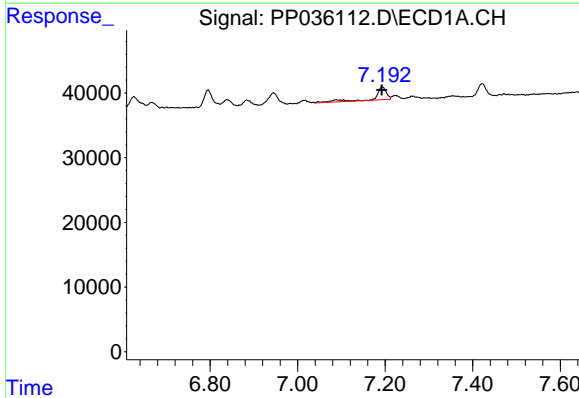
R.T.: 7.224 min
 Delta R.T.: 0.000 min
 Response: 6078
 Conc: 3.82 ng/ml

Instrument :
 ECD_P
 ClientSampleId :



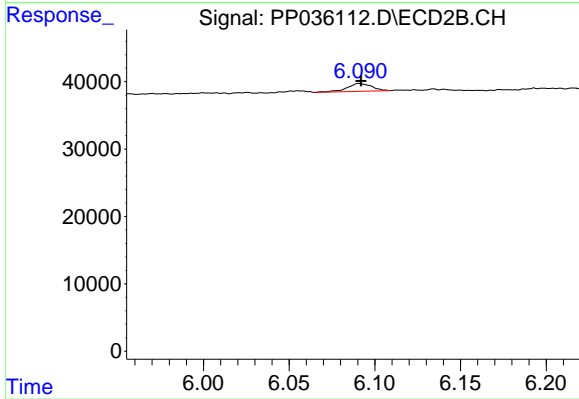
#24 AR-1248-4

R.T.: 5.712 min
 Delta R.T.: 0.000 min
 Response: 17603
 Conc: 19.93 ng/ml



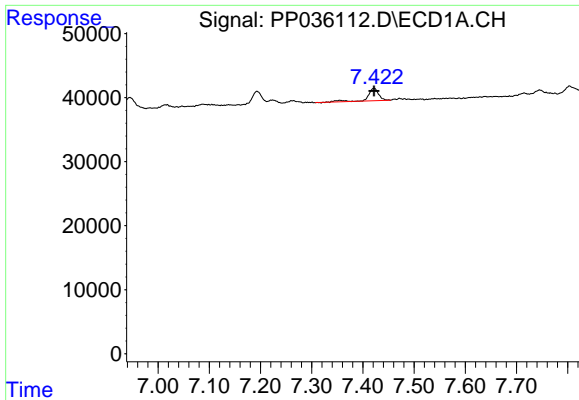
#26 AR-1254-1

R.T.: 7.193 min
 Delta R.T.: 0.000 min
 Response: 33553
 Conc: 20.71 ng/ml



#26 AR-1254-1

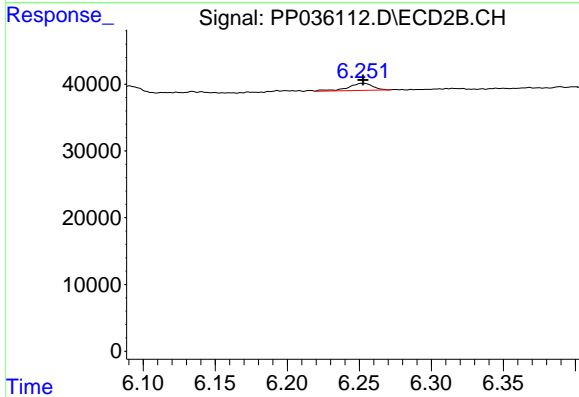
R.T.: 6.091 min
 Delta R.T.: -0.001 min
 Response: 11522
 Conc: 8.82 ng/ml



#27 AR-1254-2

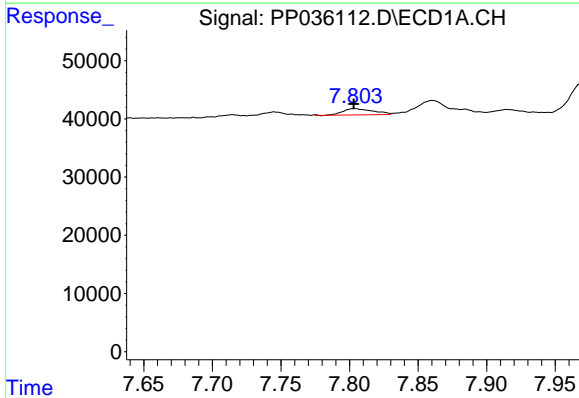
R.T.: 7.422 min
 Delta R.T.: 0.000 min
 Response: 27871
 Conc: 11.31 ng/ml

Instrument :
 ECD_P
 ClientSampleId :



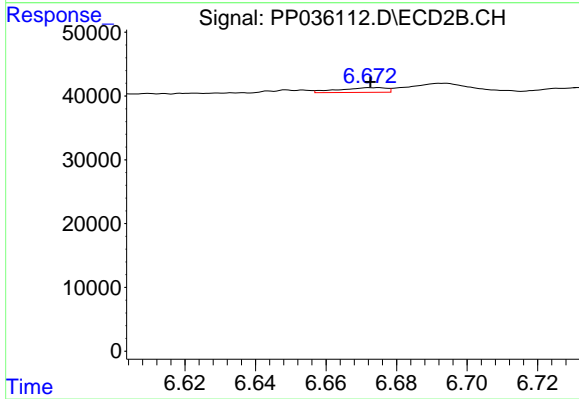
#27 AR-1254-2

R.T.: 6.252 min
 Delta R.T.: 0.000 min
 Response: 12527
 Conc: 10.86 ng/ml



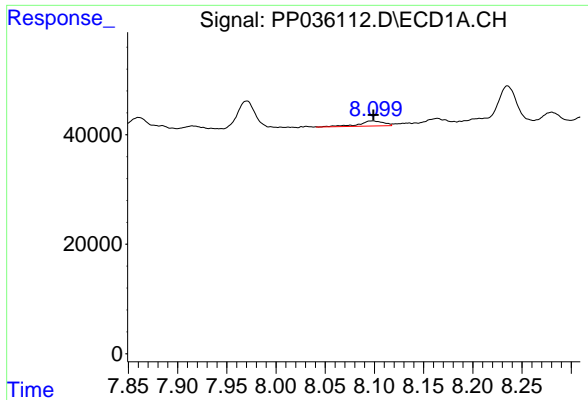
#28 AR-1254-3

R.T.: 7.804 min
 Delta R.T.: 0.000 min
 Response: 16310
 Conc: 6.18 ng/ml



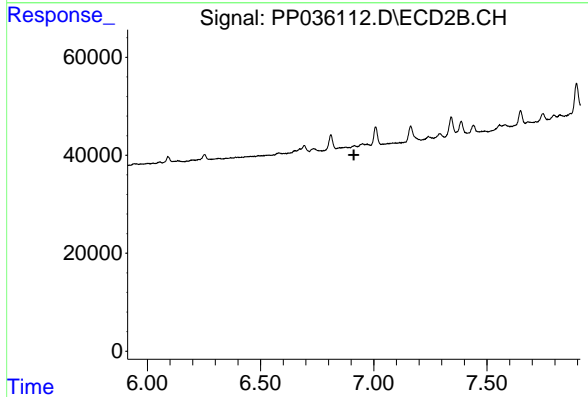
#28 AR-1254-3

R.T.: 6.675 min
 Delta R.T.: 0.002 min
 Response: 7025
 Conc: 3.69 ng/ml

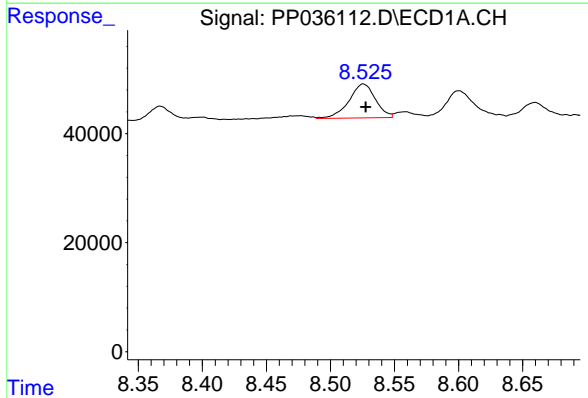


#29 AR-1254-4
 R.T.: 8.098 min
 Delta R.T.: 0.000 min
 Response: 16276
 Conc: 8.06 ng/ml

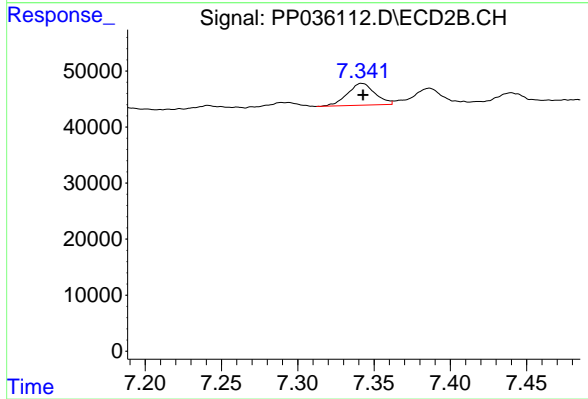
Instrument :
 ECD_P
 ClientSampleId :



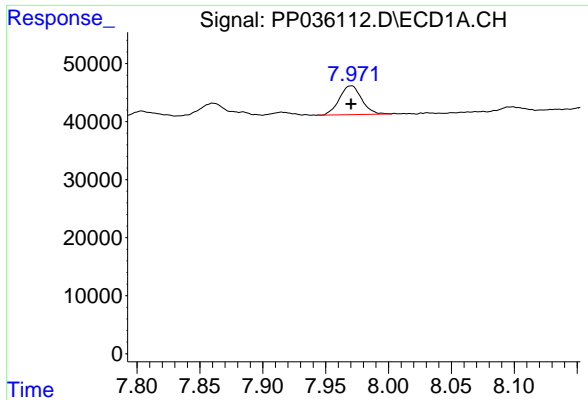
#29 AR-1254-4
 R.T.: 0.000 min
 Exp R.T. : 6.912 min
 Response: 0
 Conc: N.D.



#30 AR-1254-5
 R.T.: 8.526 min
 Delta R.T.: -0.002 min
 Response: 89163
 Conc: 39.29 ng/ml

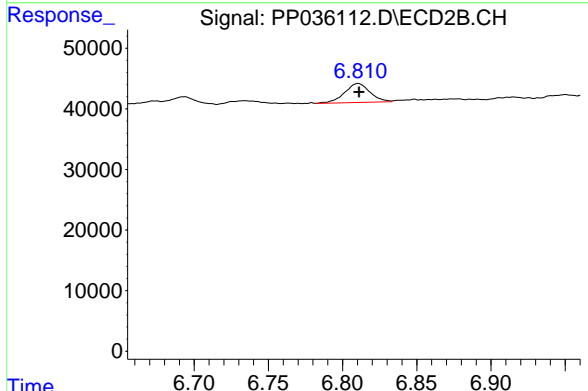


#30 AR-1254-5
 R.T.: 7.342 min
 Delta R.T.: 0.000 min
 Response: 49088
 Conc: 28.77 ng/ml

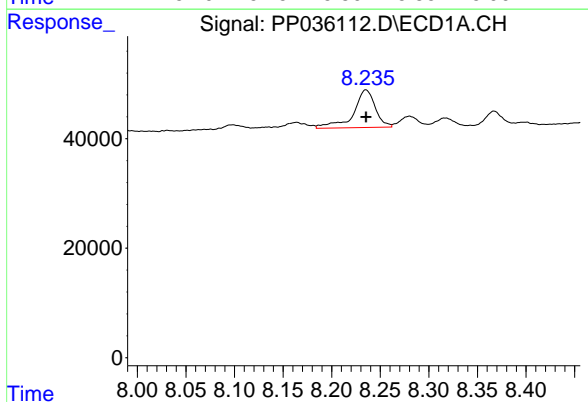


#31 AR-1260-1
 R.T.: 7.970 min
 Delta R.T.: 0.000 min
 Response: 61029
 Conc: 30.13 ng/ml

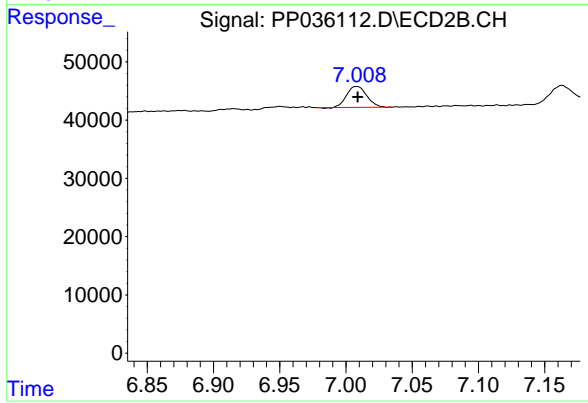
Instrument :
 ECD_P
 ClientSampled :



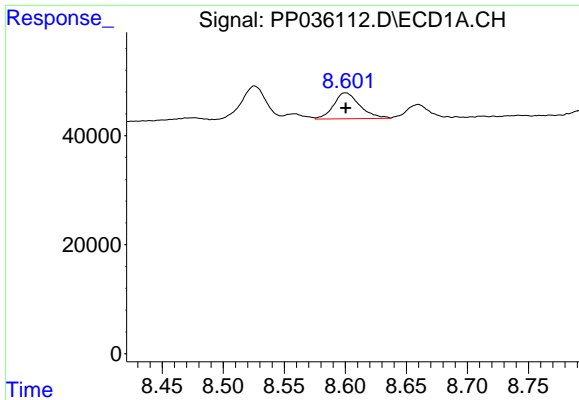
#31 AR-1260-1
 R.T.: 6.811 min
 Delta R.T.: 0.000 min
 Response: 37388
 Conc: 29.97 ng/ml



#32 AR-1260-2
 R.T.: 8.235 min
 Delta R.T.: 0.000 min
 Response: 107695
 Conc: 44.08 ng/ml



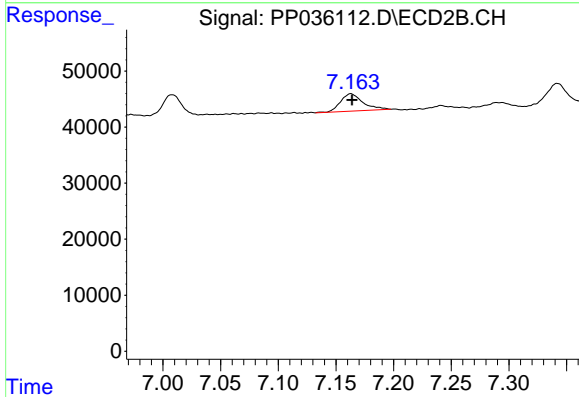
#32 AR-1260-2
 R.T.: 7.008 min
 Delta R.T.: 0.000 min
 Response: 37767
 Conc: 25.06 ng/ml



#33 AR-1260-3

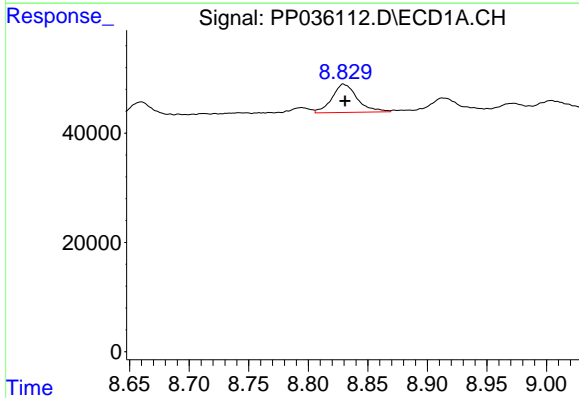
R.T.: 8.600 min
 Delta R.T.: 0.000 min
 Response: 71352
 Conc: 38.42 ng/ml

Instrument :
 ECD_P
 ClientSampleId :



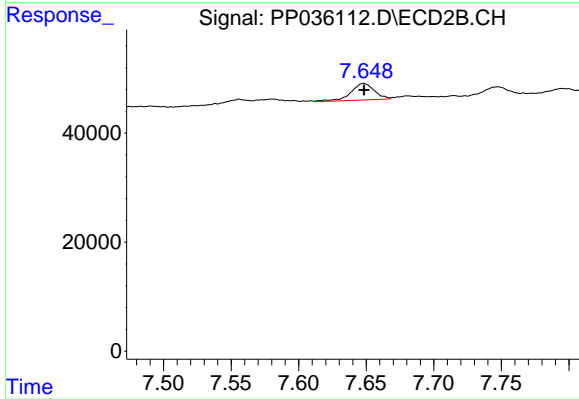
#33 AR-1260-3

R.T.: 7.163 min
 Delta R.T.: 0.000 min
 Response: 41841
 Conc: 29.77 ng/ml



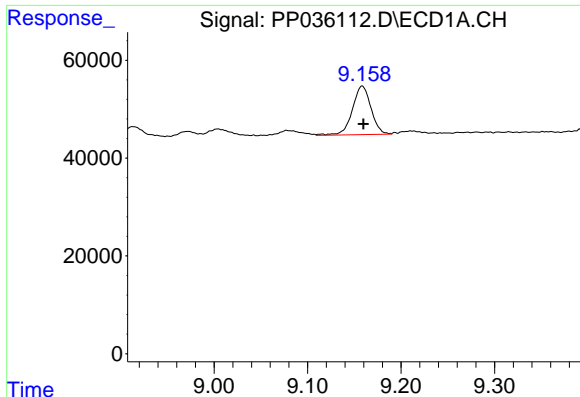
#34 AR-1260-4

R.T.: 8.830 min
 Delta R.T.: -0.001 min
 Response: 76782
 Conc: 34.38 ng/ml



#34 AR-1260-4

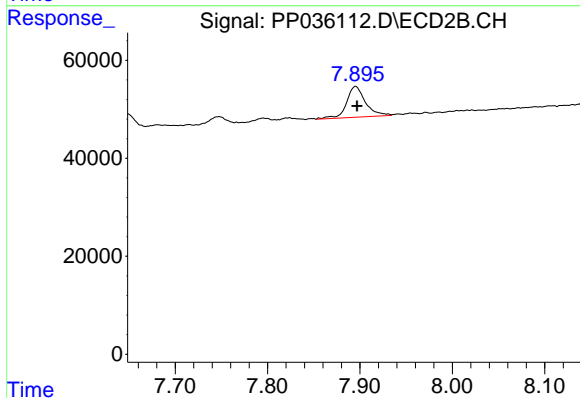
R.T.: 7.648 min
 Delta R.T.: 0.000 min
 Response: 37148
 Conc: 31.77 ng/ml



#35 AR-1260-5

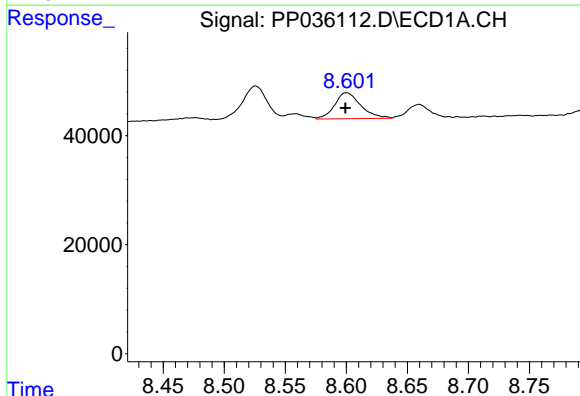
R.T.: 9.158 min
 Delta R.T.: -0.001 min
 Response: 137653
 Conc: 32.24 ng/ml

Instrument :
 ECD_P
 ClientSampled :



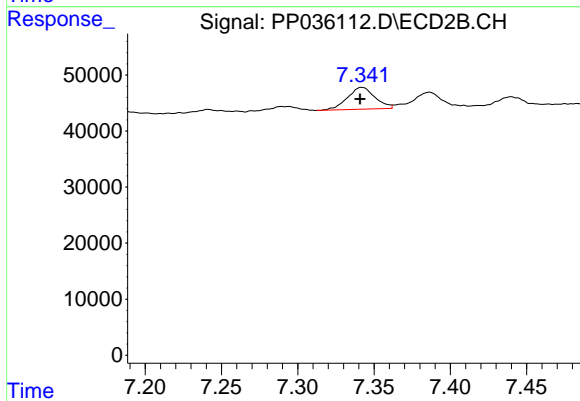
#35 AR-1260-5

R.T.: 7.895 min
 Delta R.T.: -0.001 min
 Response: 89255
 Conc: 32.24 ng/ml



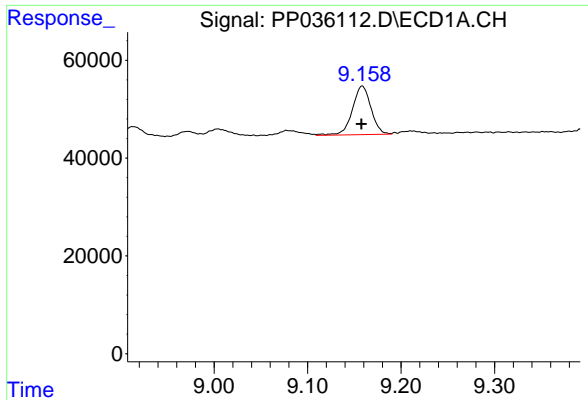
#36 AR-1262-1

R.T.: 8.600 min
 Delta R.T.: 0.000 min
 Response: 71352
 Conc: 28.31 ng/ml



#36 AR-1262-1

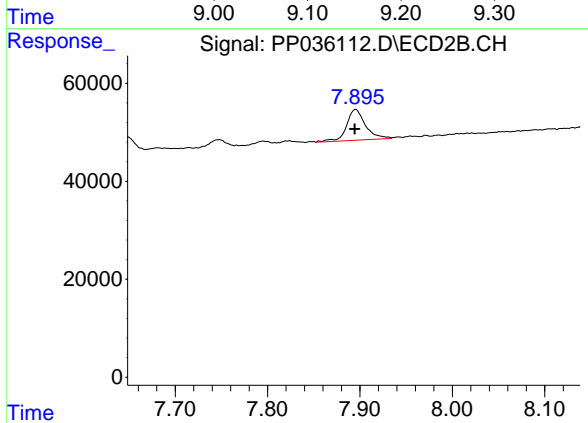
R.T.: 7.342 min
 Delta R.T.: 0.001 min
 Response: 49088
 Conc: 54.30 ng/ml



#37 AR-1262-2

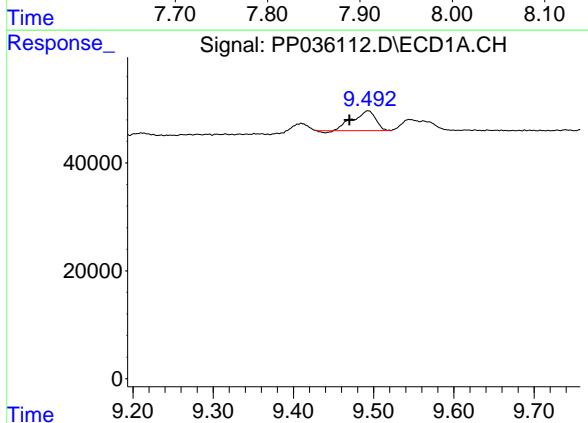
R.T.: 9.158 min
 Delta R.T.: 0.000 min
 Response: 137653
 Conc: 30.55 ng/ml

Instrument :
 ECD_P
 ClientSampleId :



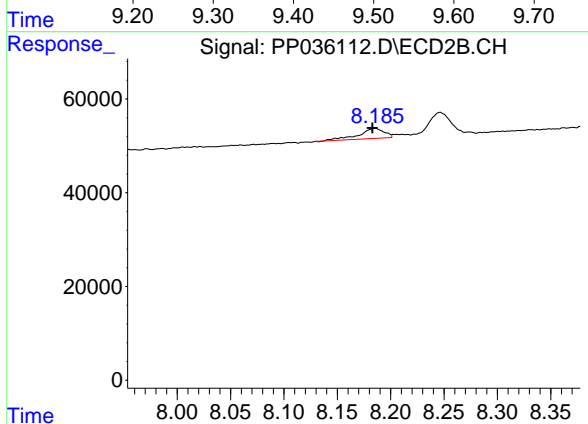
#37 AR-1262-2

R.T.: 7.895 min
 Delta R.T.: 0.001 min
 Response: 89255
 Conc: 29.98 ng/ml



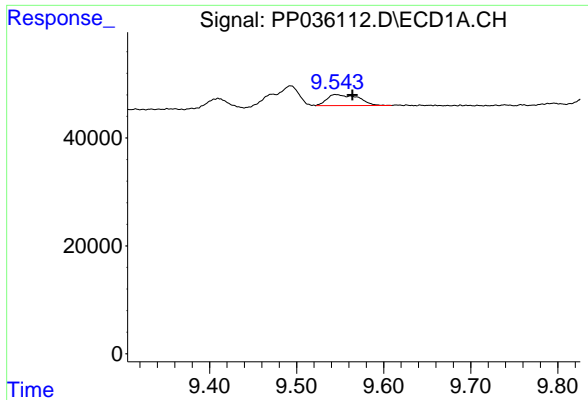
#38 AR-1262-3

R.T.: 9.493 min
 Delta R.T.: 0.023 min
 Response: 72338
 Conc: 22.42 ng/ml



#38 AR-1262-3

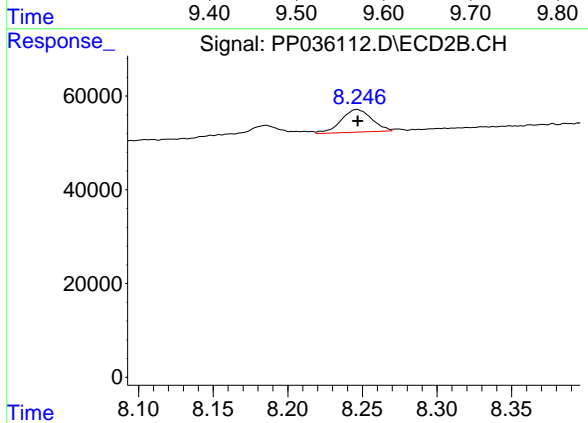
R.T.: 8.186 min
 Delta R.T.: 0.003 min
 Response: 35607
 Conc: 29.97 ng/ml



#39 AR-1262-4

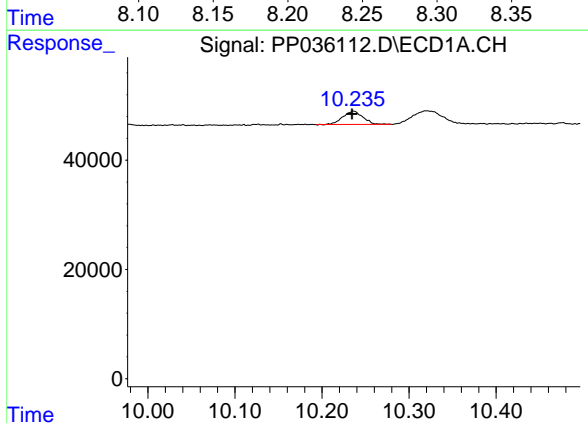
R.T.: 9.545 min
 Delta R.T.: -0.019 min
 Response: 51105
 Conc: 19.05 ng/ml

Instrument :
 ECD_P
 ClientSampled :



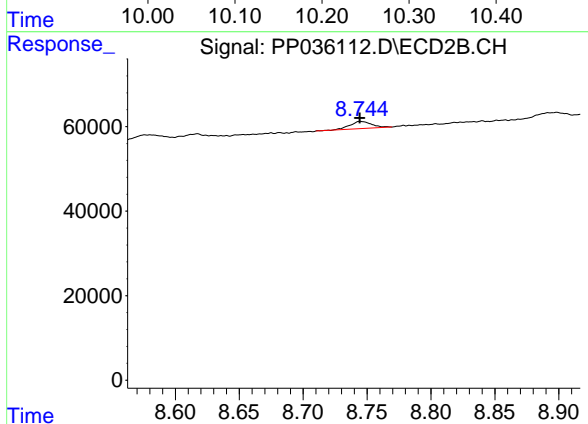
#39 AR-1262-4

R.T.: 8.246 min
 Delta R.T.: 0.000 min
 Response: 69301
 Conc: 31.44 ng/ml



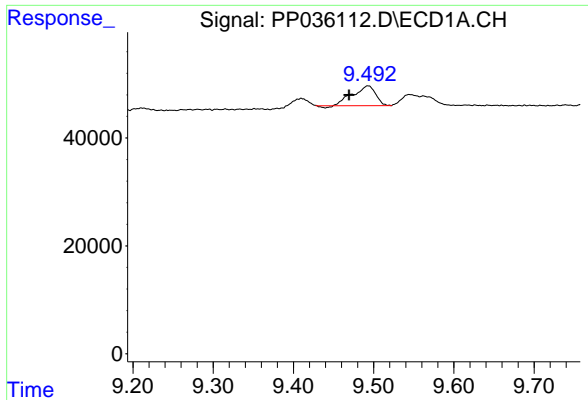
#40 AR-1262-5

R.T.: 10.236 min
 Delta R.T.: 0.002 min
 Response: 39200
 Conc: 22.01 ng/ml



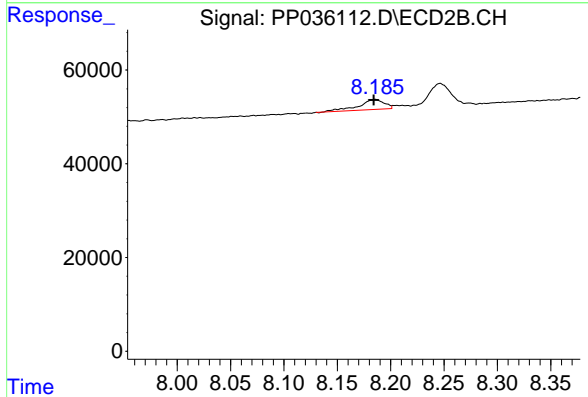
#40 AR-1262-5

R.T.: 8.745 min
 Delta R.T.: 0.000 min
 Response: 20344
 Conc: 20.00 ng/ml

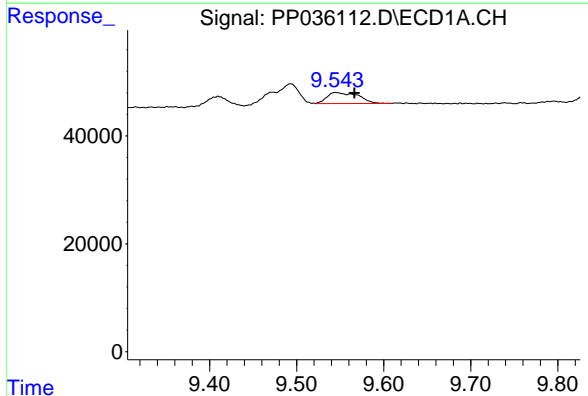


#41 AR-1268-1
 R.T.: 9.493 min
 Delta R.T.: 0.024 min
 Response: 72338
 Conc: 13.97 ng/ml

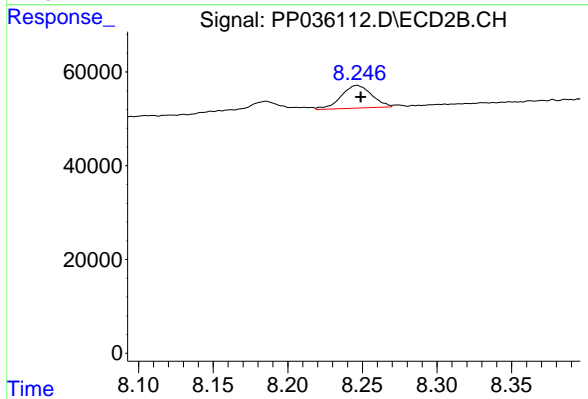
Instrument :
 ECD_P
 ClientSampleId :



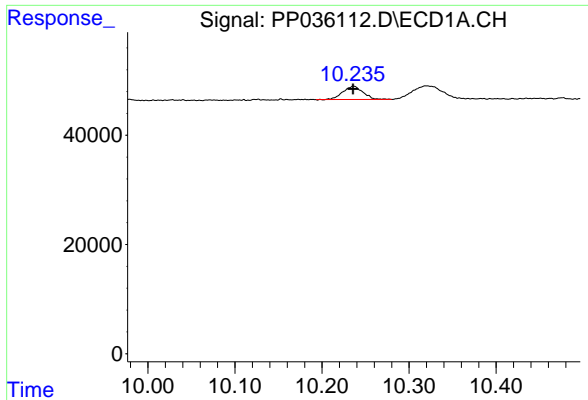
#41 AR-1268-1
 R.T.: 8.186 min
 Delta R.T.: 0.002 min
 Response: 35607
 Conc: 10.48 ng/ml



#42 AR-1268-2
 R.T.: 9.545 min
 Delta R.T.: -0.022 min
 Response: 51105
 Conc: 10.22 ng/ml

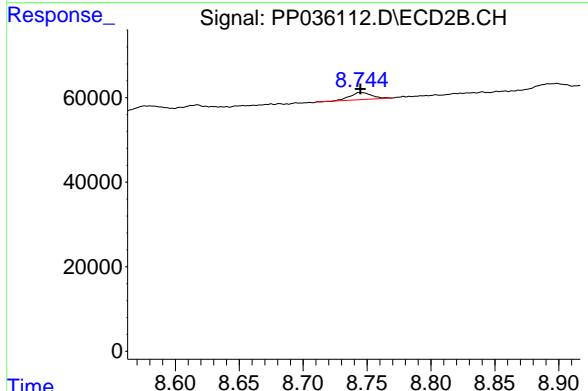


#42 AR-1268-2
 R.T.: 8.246 min
 Delta R.T.: -0.002 min
 Response: 69301
 Conc: 22.44 ng/ml

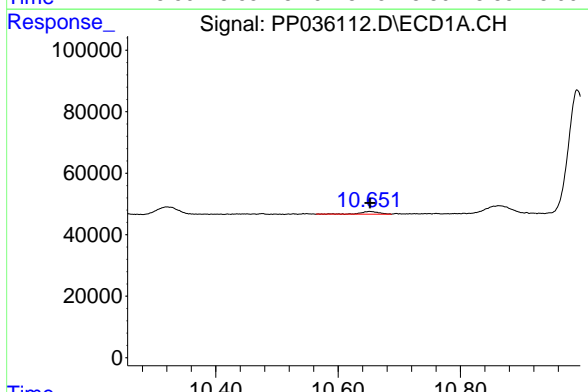


#44 AR-1268-4
 R.T.: 10.236 min
 Delta R.T.: 0.000 min
 Response: 39200
 Conc: 20.09 ng/ml

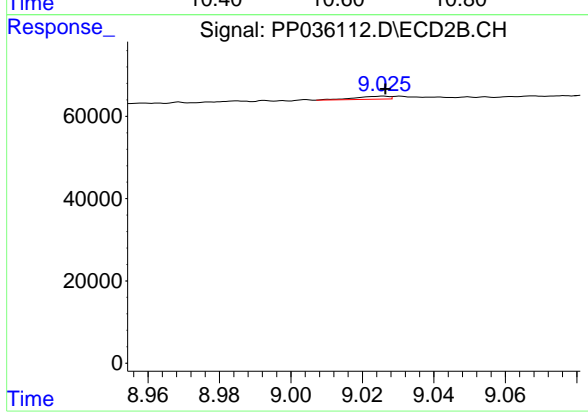
Instrument :
 ECD_P
 ClientSampled :



#44 AR-1268-4
 R.T.: 8.745 min
 Delta R.T.: 0.000 min
 Response: 20344
 Conc: 18.46 ng/ml



#45 AR-1268-5
 R.T.: 10.651 min
 Delta R.T.: 0.000 min
 Response: 18090
 Conc: 1.34 ng/ml



#45 AR-1268-5
 R.T.: 9.026 min
 Delta R.T.: 0.000 min
 Response: 4795
 Conc: 0.56 ng/ml