

Data Path : Z:\pestpcbsrv\HPCHEM1\ECD_P\Data\PP052621\
 Data File : PP036144.D
 Signal(s) : Signal #1: ECD1A.CH Signal #2: ECD2B.CH
 Acq On : 26 May 2021 19:05
 Operator : DD\AJ
 Sample : M2262-08
 Misc : AR1660 LOQ 50 PPB
 ALS Vial : 31 Sample Multiplier: 1

Instrument :
 ECD_P
Client Sample Id :
 LOQ-WATER-02-QT2-2021

Integration File signal 1: autoint1.e
 Integration File signal 2: autoint2.e
 Quant Time: May 27 07:40:36 2021
 Quant Method : Z:\pestpcbsrv\HPCHEM1\ECD_P\methods\PP052521.M
 Quant Title : GC EXTRACTABLES
 QLast Update : Wed May 26 00:48:29 2021
 Response via : Initial Calibration
 Integrator: ChemStation 6890 Scale Mode: Small noise peaks clipped

Volume Inj. : 2 µl
 Signal #1 Phase : ZB-MR1 Signal #2 Phase: ZB-MR2
 Signal #1 Info : 30Mx0.32mmx 0.50µ Signal #2 Info : 30M x 0.32mm x 0.25µm

Compound	RT#1	RT#2	Resp#1	Resp#2	ng/ml	ng/ml
System Monitoring Compounds						
1) SA Tetrachlo...	4.968	3.966	784731	483226	17.631	17.314
2) SA Decachlor...	10.996	9.276	818032	422085	19.141	18.398
Target Compounds						
3) L1 AR-1016-1	6.287	5.221	86060	34847	53.694	37.411 #
4) L1 AR-1016-2	6.311	5.241	120573	56289	53.210	43.086
5) L1 AR-1016-3	6.376	5.432	78952	34735	54.523	49.122
6) L1 AR-1016-4	6.484	5.484	61925	24745	51.139	46.583
7) L1 AR-1016-5	6.798	5.713	58725	32887	49.590	48.000
8) L2 AR-1221-1	5.220	0.000	24563	0	44.695	N.D. #
9) L2 AR-1221-2	5.318	4.319	18850	11291	45.221	46.899
10) L2 AR-1221-3	5.404	4.411	55498	24921	44.234	32.289 #
11) L3 AR-1232-1	5.404	4.411	55498	24921	57.435	42.604 #
12) L3 AR-1232-2	5.991	5.241	85367	56289	169.882	107.377 #
13) L3 AR-1232-3	6.311	5.432	120573	34735	129.372	125.385
14) L3 AR-1232-4	6.484	5.529	61925	29820	128.079	131.418
15) L3 AR-1232-5	6.581	5.713	55841	32887	173.730	131.958
16) L4 AR-1242-1	6.287	5.221	86060	34847	71.450	48.400 #
17) L4 AR-1242-2	6.311	5.241	120573	56289	71.578	57.539
18) L4 AR-1242-3	6.376	5.432	78952	34735	71.934	64.759
19) L4 AR-1242-4	6.484	5.529	61925	29820	67.810	60.426
20) L4 AR-1242-5	0.000	6.093	0	23033	N.D.	35.593 #
21) L5 AR-1248-1	6.287	5.221	86060	34847	92.440	64.958 #
22) L5 AR-1248-2	6.581	5.484	55841	24745	46.707	35.460
23) L5 AR-1248-3	6.798	5.529	58725	29820	40.531	41.434
24) L5 AR-1248-4	7.225	5.713	8504	32887	5.340	37.236 #
26) L6 AR-1254-1	7.195	6.093	50641	23033	31.258	17.626 #
27) L6 AR-1254-2	7.424	6.254	49915	26851	20.263	23.289
28) L6 AR-1254-3	7.805	6.675	32861	14406	12.457	7.566 #
29) L6 AR-1254-4	8.100	0.000	20222	0	10.018	N.D. #
30) L6 AR-1254-5	8.529	7.344	170168	91551	74.994	53.662 #
31) L7 AR-1260-1	7.973	6.812	115703	65720	57.117	52.673
32) L7 AR-1260-2	8.239	7.010	160723	75159	65.790	49.875
33) L7 AR-1260-3	8.603	7.165	92772	74127	49.957	52.744
34) L7 AR-1260-4	8.834	7.650	118525	55854	53.078	47.774
35) L7 AR-1260-5	9.163	7.898	215989	133286	50.586	48.150
36) L8 AR-1262-1	8.603	7.344	92772	91551	36.806	101.267 #
37) L8 AR-1262-2	9.163	7.898	215989	133286	47.929	44.769
38) L8 AR-1262-3	9.497f	8.185	129640	58093	40.175	48.889
39) L8 AR-1262-4	9.551	8.248	73613	102952	27.447	46.700 #
40) L8 AR-1262-5	10.239	8.748	74393	26918	41.766	26.465 #
41) L9 AR-1268-1	9.497f	8.185	129640	58093	25.037	17.104 #
42) L9 AR-1268-2	9.551f	8.248	73613	102952	14.728	33.336 #
44) L9 AR-1268-4	10.239	8.748	74393	26918	38.125	24.429 #

Data Path : Z:\pestpcbsrv\HPCHEM1\ECD_P\Data\PP052621\
 Data File : PP036144.D
 Signal(s) : Signal #1: ECD1A.CH Signal #2: ECD2B.CH
 Acq On : 26 May 2021 19:05
 Operator : DD\AJ
 Sample : M2262-08
 Misc : AR1660 LOQ 50 PPB
 ALS Vial : 31 Sample Multiplier: 1

Instrument :
 ECD_P
 ClientSampleId :
 LOQ-WATER-02-QT2-2021

Integration File signal 1: autoint1.e
 Integration File signal 2: autoint2.e
 Quant Time: May 27 07:40:36 2021
 Quant Method : Z:\pestpcbsrv\HPCHEM1\ECD_P\methods\PP052521.M
 Quant Title : GC EXTRACTABLES
 QLast Update : Wed May 26 00:48:29 2021
 Response via : Initial Calibration
 Integrator: ChemStation 6890 Scale Mode: Small noise peaks clipped

Volume Inj. : 2 µl
 Signal #1 Phase : ZB-MR1 Signal #2 Phase: ZB-MR2
 Signal #1 Info : 30Mx0.32mmx 0.50µ Signal #2 Info : 30M x 0.32mm x 0.25µm

	Compound	RT#1	RT#2	Resp#1	Resp#2	ng/ml	ng/ml
45)	L9 AR-1268-5	10.657	9.031	26780	14691	1.982	1.720

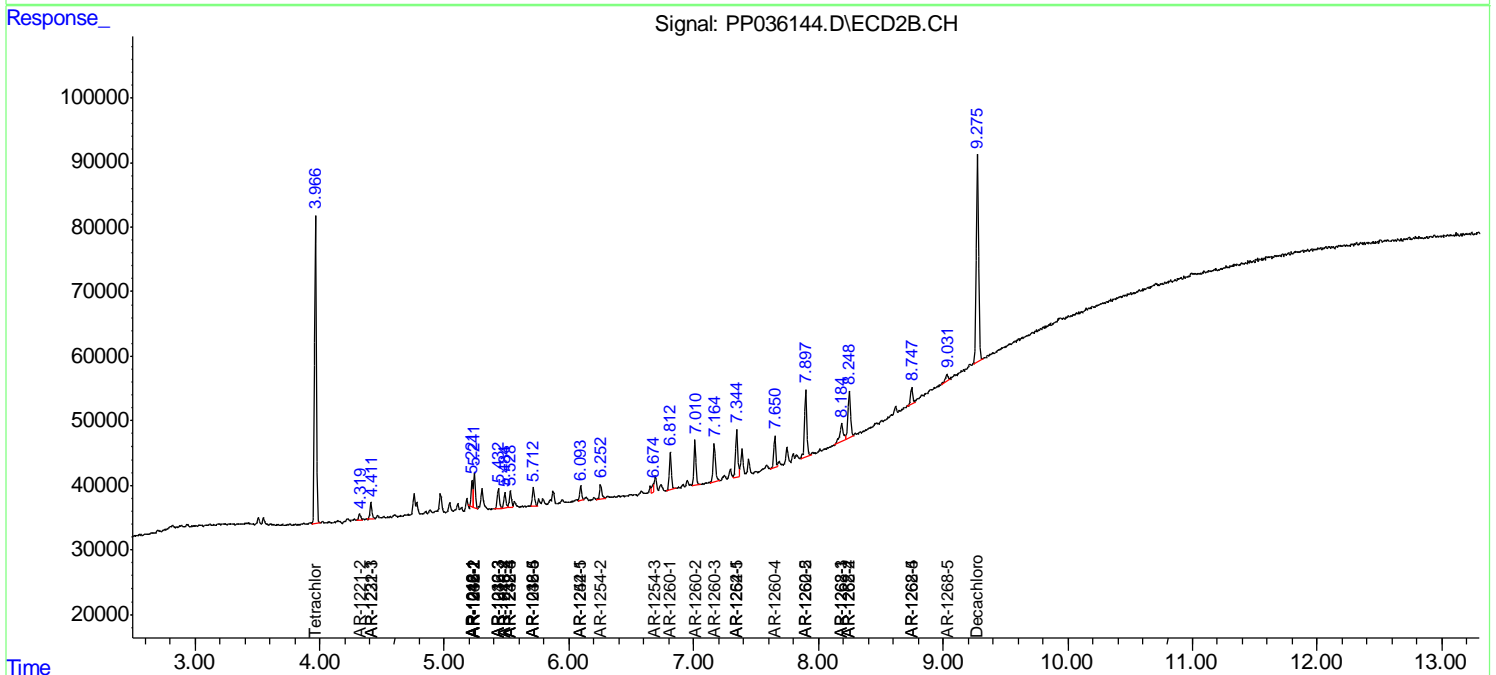
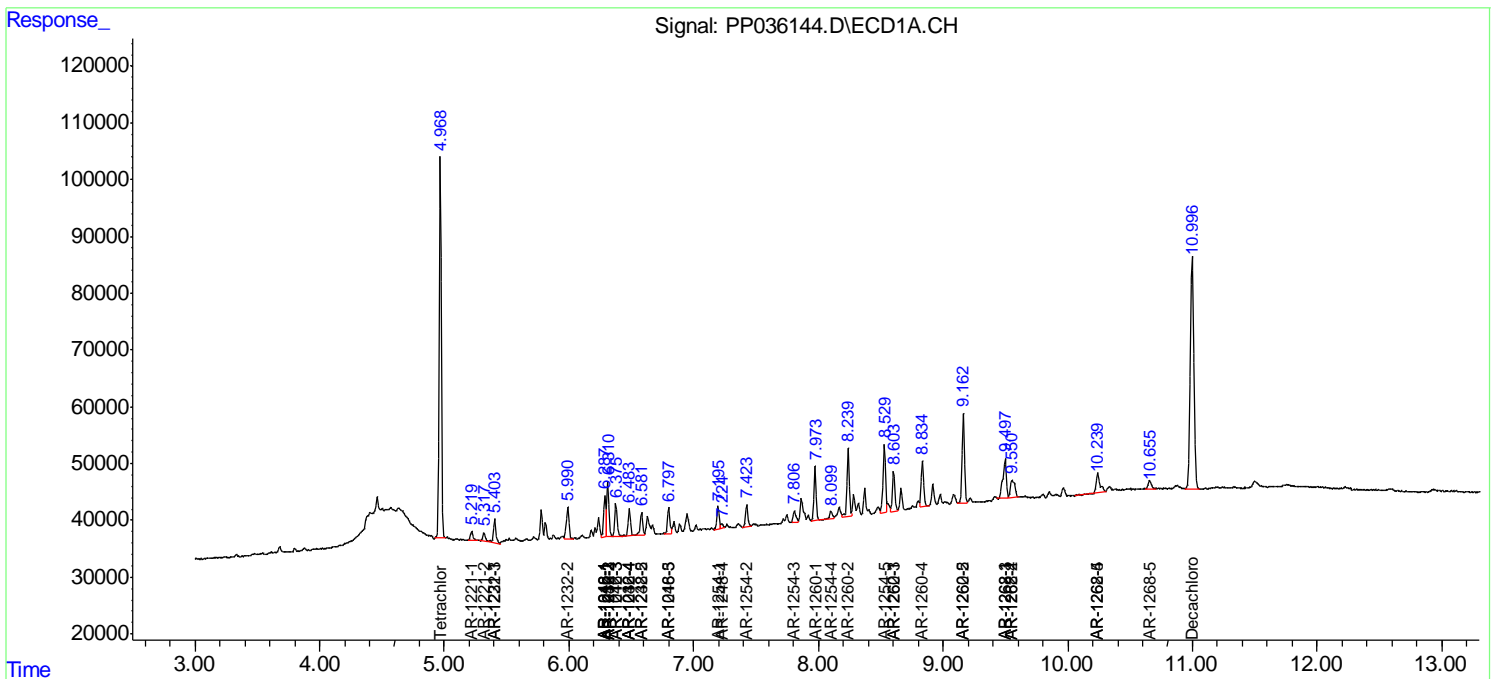
(f)=RT Delta > 1/2 Window (#)=Amounts differ by > 25% (m)=manual int.

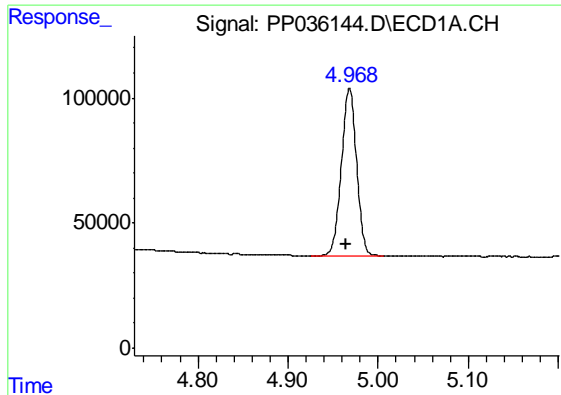
Data Path : Z:\pestpcbsrv\HPCHEM1\ECD_P\Data\PP052621\
 Data File : PP036144.D
 Signal(s) : Signal #1: ECD1A.CH Signal #2: ECD2B.CH
 Acq On : 26 May 2021 19:05
 Operator : DD\AJ
 Sample : M2262-08
 Misc : AR1660 LOQ 50 PPB
 ALS Vial : 31 Sample Multiplier: 1

Instrument :
 ECD_P
Client Sampled :
 LOQ-WATER-02-QT2-2021

Integration File signal 1: autoint1.e
 Integration File signal 2: autoint2.e
 Quant Time: May 27 07:40:36 2021
 Quant Method : Z:\pestpcbsrv\HPCHEM1\ECD_P\methods\PP052521.M
 Quant Title : GC EXTRACTABLES
 QLast Update : Wed May 26 00:48:29 2021
 Response via : Initial Calibration
 Integrator: ChemStation 6890 Scale Mode: Small noise peaks clipped

Volume Inj. : 2 µl
 Signal #1 Phase : ZB-MR1 Signal #2 Phase: ZB-MR2
 Signal #1 Info : 30Mx0.32mmx 0.50µ Signal #2 Info : 30M x 0.32mm x 0.25µm

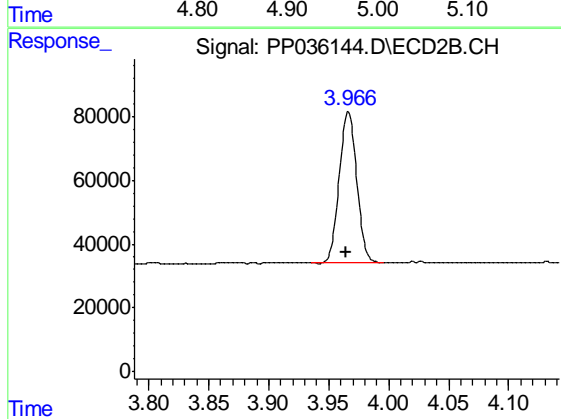




#1 Tetrachloro-m-xylene

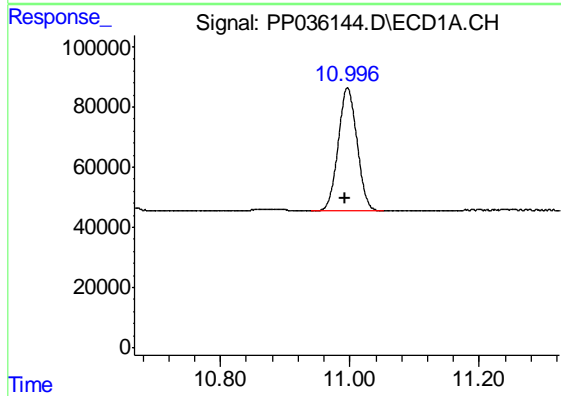
R.T.: 4.968 min
Delta R.T.: 0.003 min
Response: 784731
Conc: 17.63 ng/ml

Instrument :
ECD_P
ClientSampleId :
LOQ-WATER-02-QT2-2021



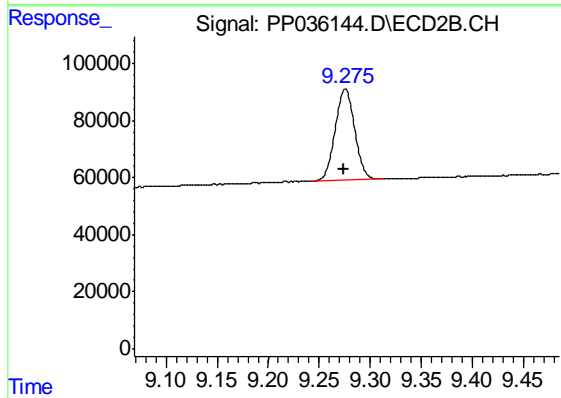
#1 Tetrachloro-m-xylene

R.T.: 3.966 min
Delta R.T.: 0.002 min
Response: 483226
Conc: 17.31 ng/ml



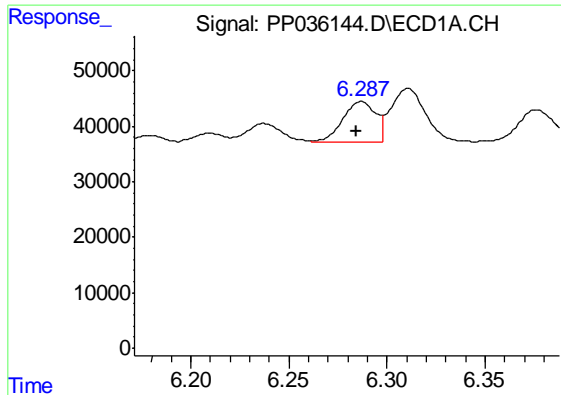
#2 Decachlorobiphenyl

R.T.: 10.996 min
Delta R.T.: 0.004 min
Response: 818032
Conc: 19.14 ng/ml



#2 Decachlorobiphenyl

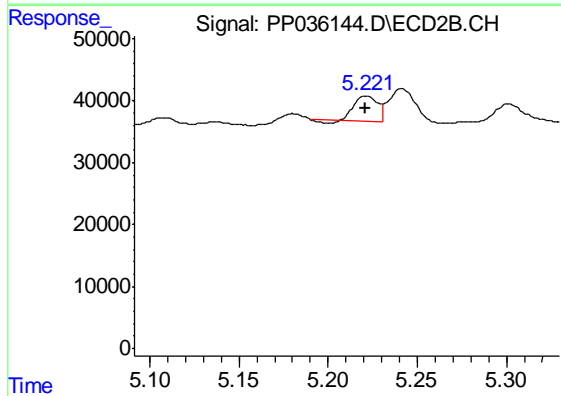
R.T.: 9.276 min
Delta R.T.: 0.001 min
Response: 422085
Conc: 18.40 ng/ml



#3 AR-1016-1

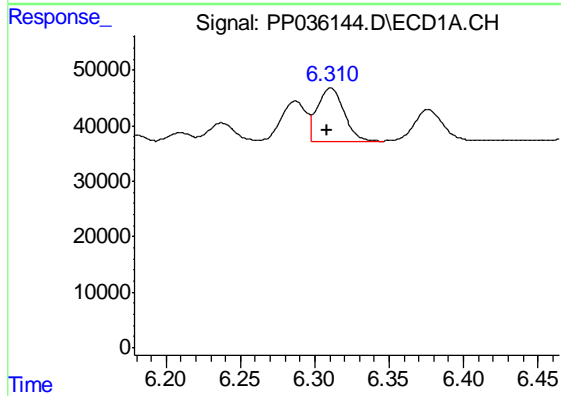
R.T.: 6.287 min
 Delta R.T.: 0.002 min
 Response: 86060
 Conc: 53.69 ng/ml

Instrument :
 ECD_P
 ClientSampleId :
 LOQ-WATER-02-QT2-2021



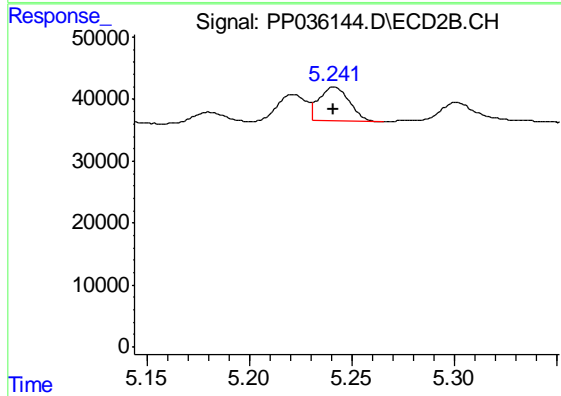
#3 AR-1016-1

R.T.: 5.221 min
 Delta R.T.: 0.000 min
 Response: 34847
 Conc: 37.41 ng/ml



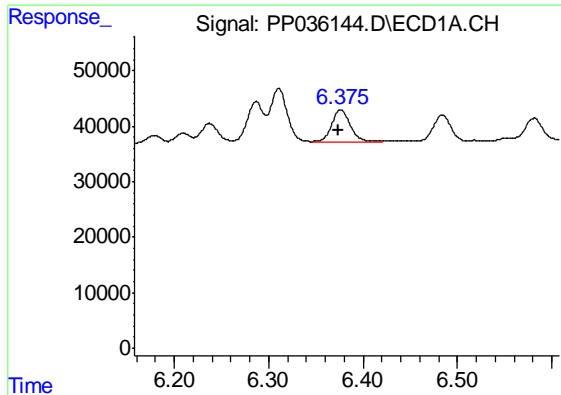
#4 AR-1016-2

R.T.: 6.311 min
 Delta R.T.: 0.003 min
 Response: 120573
 Conc: 53.21 ng/ml



#4 AR-1016-2

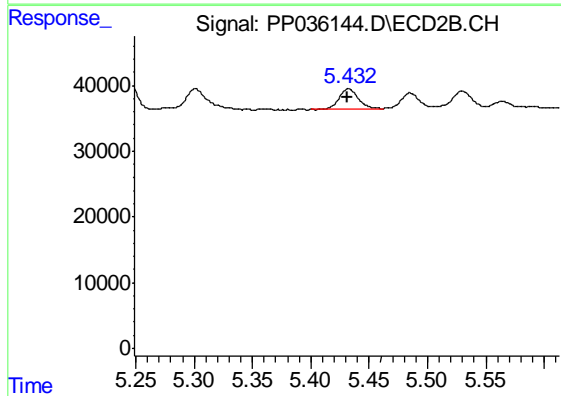
R.T.: 5.241 min
 Delta R.T.: 0.000 min
 Response: 56289
 Conc: 43.09 ng/ml



#5 AR-1016-3

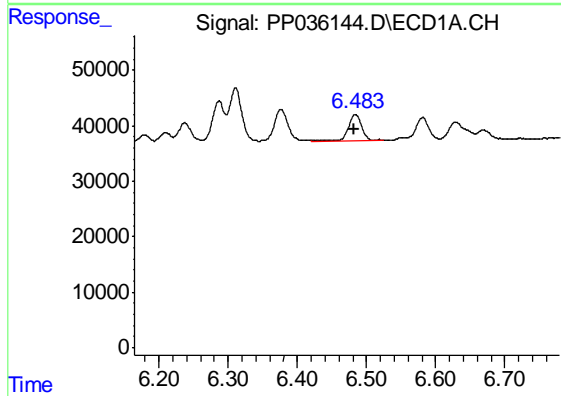
R.T.: 6.376 min
 Delta R.T.: 0.002 min
 Response: 78952
 Conc: 54.52 ng/ml

Instrument :
 ECD_P
 ClientSampleId :
 LOQ-WATER-02-QT2-2021



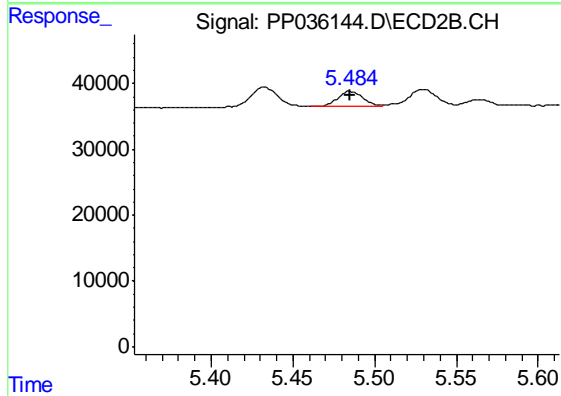
#5 AR-1016-3

R.T.: 5.432 min
 Delta R.T.: 0.001 min
 Response: 34735
 Conc: 49.12 ng/ml



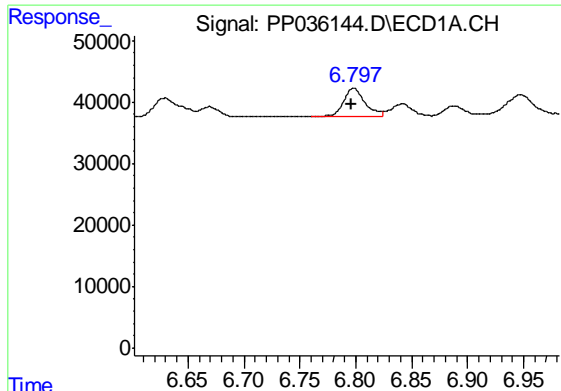
#6 AR-1016-4

R.T.: 6.484 min
 Delta R.T.: 0.002 min
 Response: 61925
 Conc: 51.14 ng/ml



#6 AR-1016-4

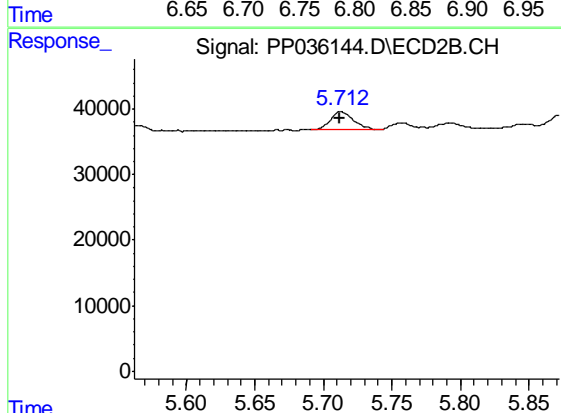
R.T.: 5.484 min
 Delta R.T.: 0.000 min
 Response: 24745
 Conc: 46.58 ng/ml



#7 AR-1016-5

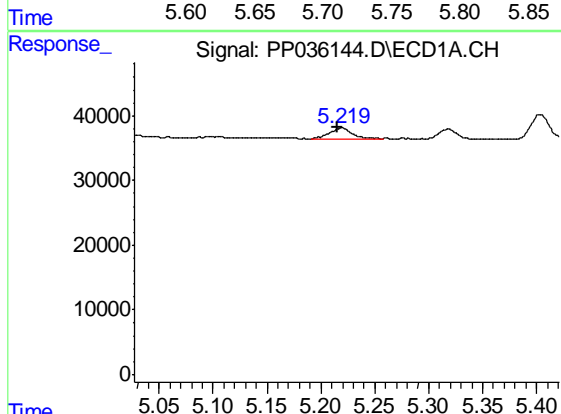
R.T.: 6.798 min
 Delta R.T.: 0.002 min
 Response: 58725
 Conc: 49.59 ng/ml

Instrument :
 ECD_P
 ClientSampleId :
 LOQ-WATER-02-QT2-2021



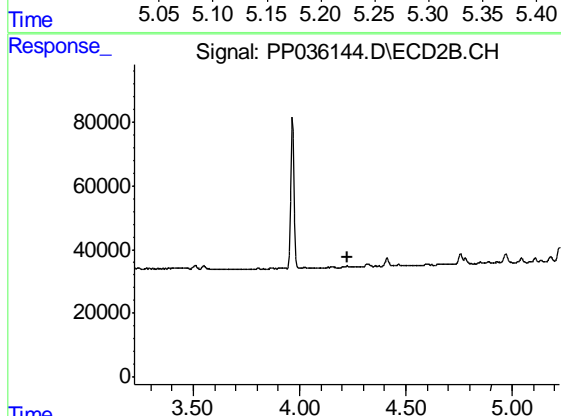
#7 AR-1016-5

R.T.: 5.713 min
 Delta R.T.: 0.000 min
 Response: 32887
 Conc: 48.00 ng/ml



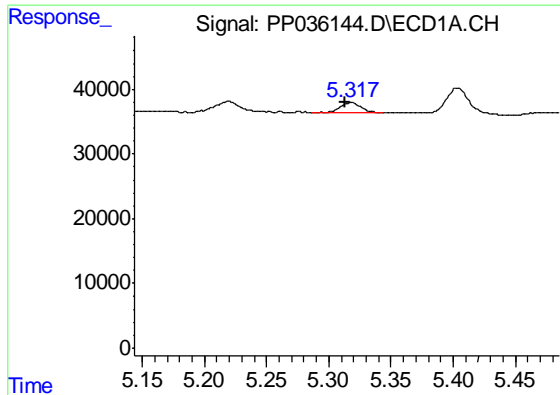
#8 AR-1221-1

R.T.: 5.220 min
 Delta R.T.: 0.005 min
 Response: 24563
 Conc: 44.69 ng/ml



#8 AR-1221-1

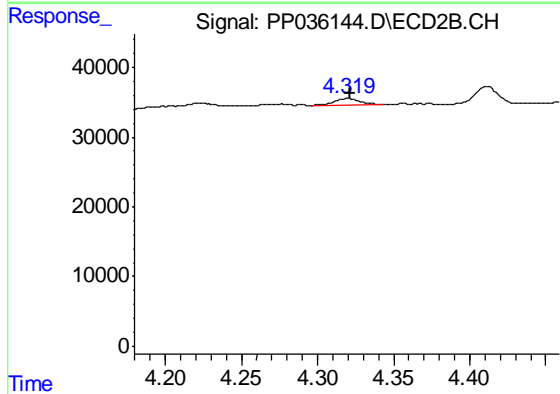
R.T.: 0.000 min
 Exp R.T. : 4.223 min
 Response: 0
 Conc: N.D.



#9 AR-1221-2

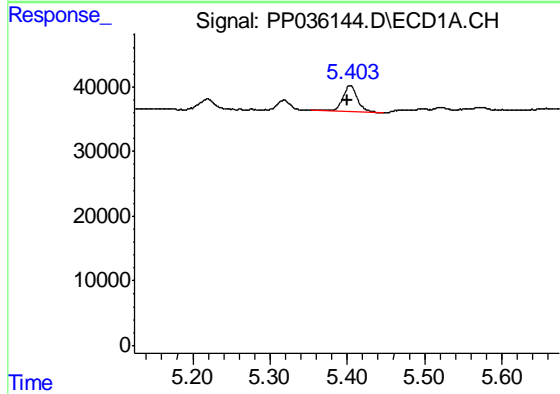
R.T.: 5.318 min
 Delta R.T.: 0.005 min
 Response: 18850
 Conc: 45.22 ng/ml

Instrument :
 ECD_P
 ClientSampleId :
 LOQ-WATER-02-QT2-2021



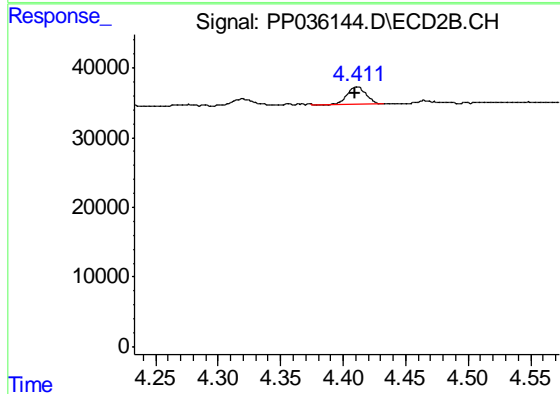
#9 AR-1221-2

R.T.: 4.319 min
 Delta R.T.: -0.002 min
 Response: 11291
 Conc: 46.90 ng/ml



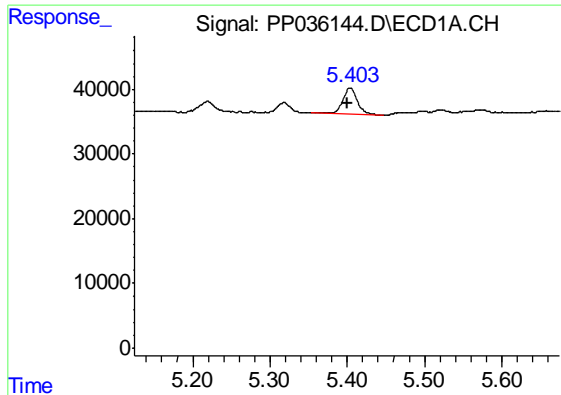
#10 AR-1221-3

R.T.: 5.404 min
 Delta R.T.: 0.003 min
 Response: 55498
 Conc: 44.23 ng/ml



#10 AR-1221-3

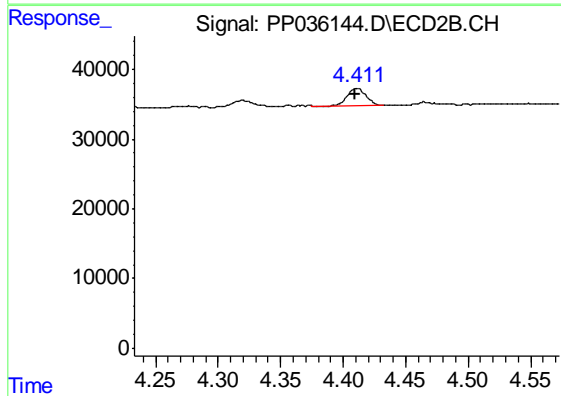
R.T.: 4.411 min
 Delta R.T.: 0.001 min
 Response: 24921
 Conc: 32.29 ng/ml



#11 AR-1232-1

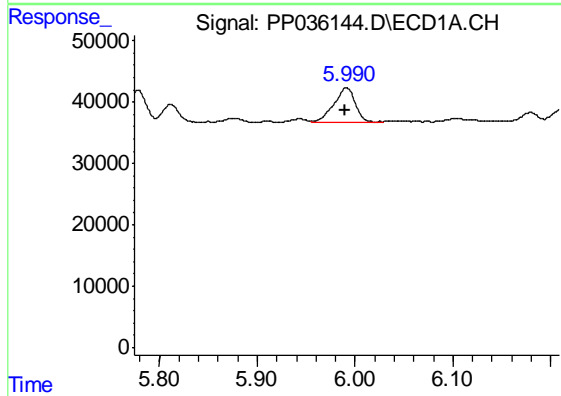
R.T.: 5.404 min
 Delta R.T.: 0.003 min
 Response: 55498
 Conc: 57.43 ng/ml

Instrument :
 ECD_P
 ClientSampleId :
 LOQ-WATER-02-QT2-2021



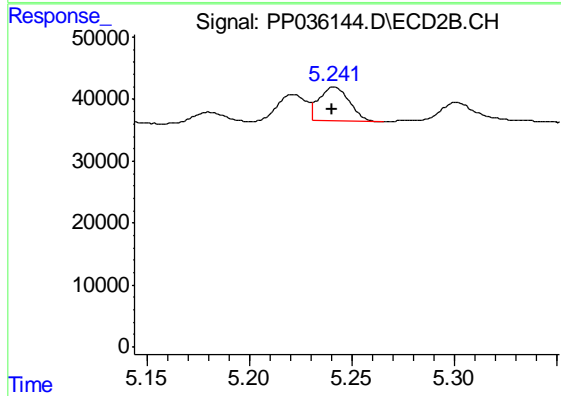
#11 AR-1232-1

R.T.: 4.411 min
 Delta R.T.: 0.001 min
 Response: 24921
 Conc: 42.60 ng/ml



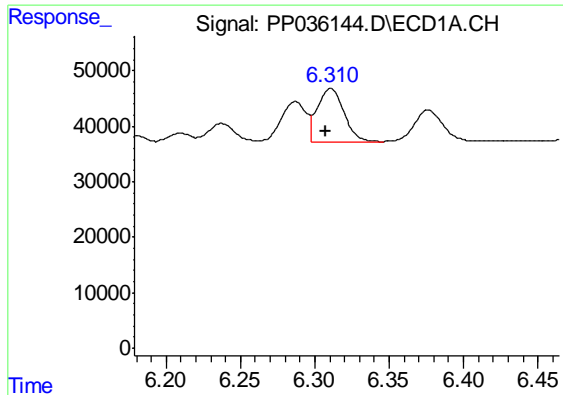
#12 AR-1232-2

R.T.: 5.991 min
 Delta R.T.: 0.002 min
 Response: 85367
 Conc: 169.88 ng/ml



#12 AR-1232-2

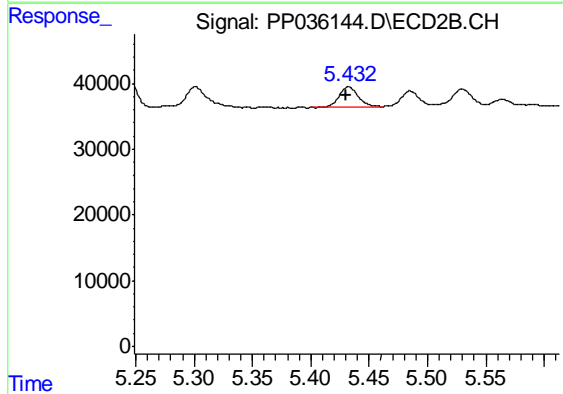
R.T.: 5.241 min
 Delta R.T.: 0.000 min
 Response: 56289
 Conc: 107.38 ng/ml



#13 AR-1232-3

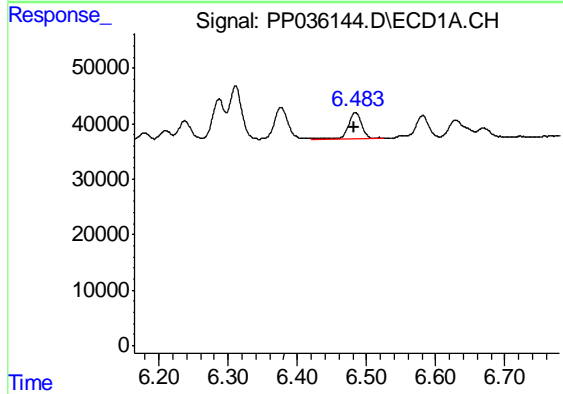
R.T.: 6.311 min
 Delta R.T.: 0.003 min
 Response: 120573
 Conc: 129.37 ng/ml

Instrument :
 ECD_P
 ClientSampleId :
 LOQ-WATER-02-QT2-2021



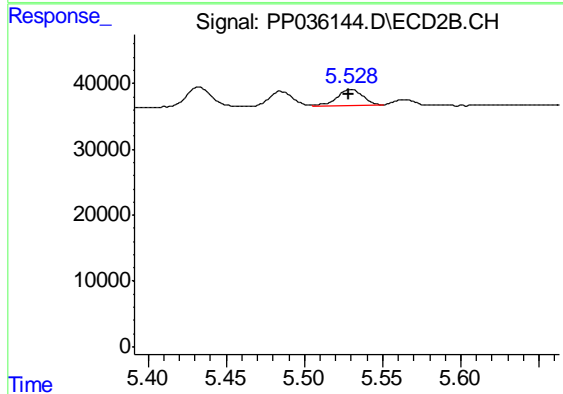
#13 AR-1232-3

R.T.: 5.432 min
 Delta R.T.: 0.002 min
 Response: 34735
 Conc: 125.38 ng/ml



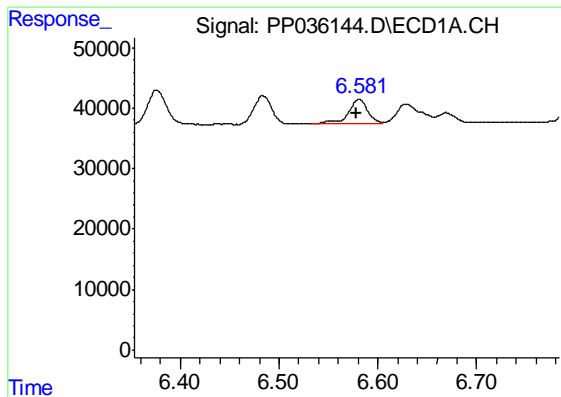
#14 AR-1232-4

R.T.: 6.484 min
 Delta R.T.: 0.002 min
 Response: 61925
 Conc: 128.08 ng/ml



#14 AR-1232-4

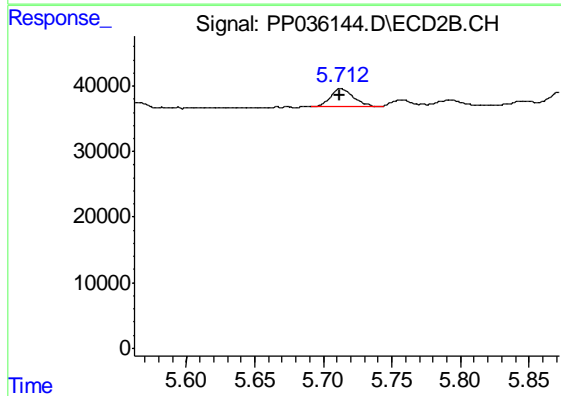
R.T.: 5.529 min
 Delta R.T.: 0.000 min
 Response: 29820
 Conc: 131.42 ng/ml



#15 AR-1232-5

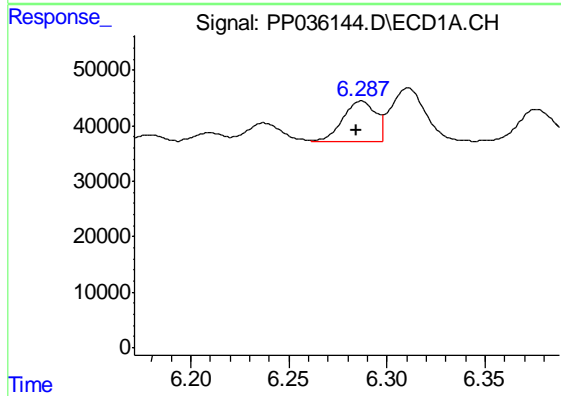
R.T.: 6.581 min
 Delta R.T.: 0.003 min
 Response: 55841
 Conc: 173.73 ng/ml

Instrument :
 ECD_P
 ClientSampleId :
 LOQ-WATER-02-QT2-2021



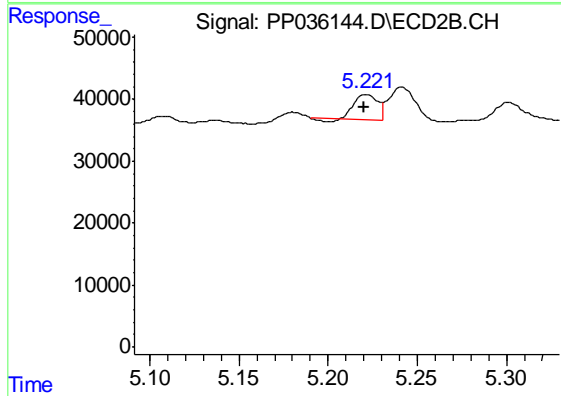
#15 AR-1232-5

R.T.: 5.713 min
 Delta R.T.: 0.000 min
 Response: 32887
 Conc: 131.96 ng/ml



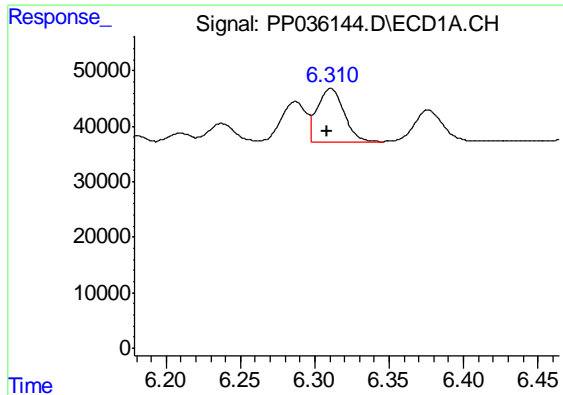
#16 AR-1242-1

R.T.: 6.287 min
 Delta R.T.: 0.003 min
 Response: 86060
 Conc: 71.45 ng/ml



#16 AR-1242-1

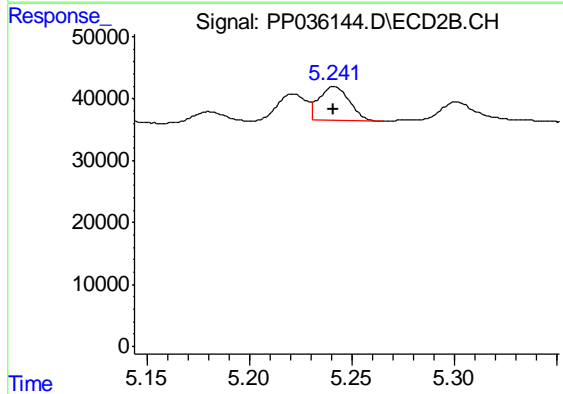
R.T.: 5.221 min
 Delta R.T.: 0.000 min
 Response: 34847
 Conc: 48.40 ng/ml



#17 AR-1242-2

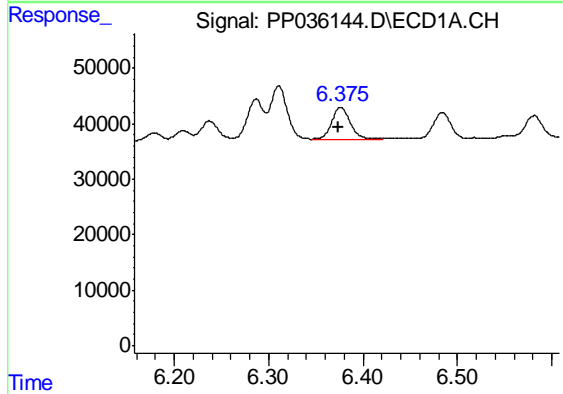
R.T.: 6.311 min
 Delta R.T.: 0.002 min
 Response: 120573
 Conc: 71.58 ng/ml

Instrument :
 ECD_P
 ClientSampleId :
 LOQ-WATER-02-QT2-2021



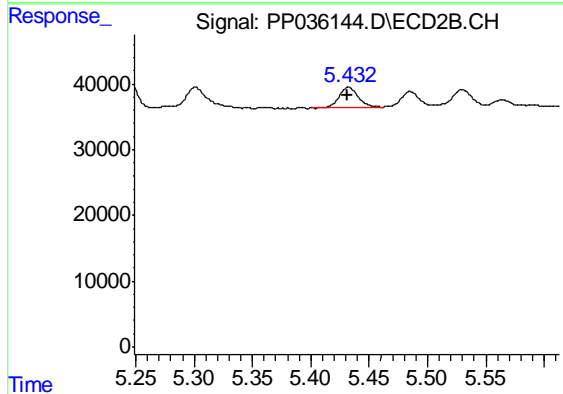
#17 AR-1242-2

R.T.: 5.241 min
 Delta R.T.: 0.000 min
 Response: 56289
 Conc: 57.54 ng/ml



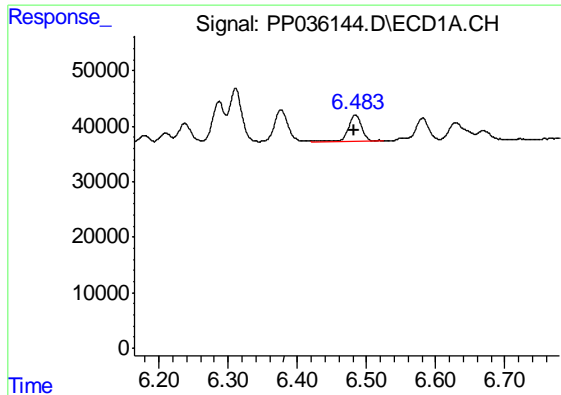
#18 AR-1242-3

R.T.: 6.376 min
 Delta R.T.: 0.002 min
 Response: 78952
 Conc: 71.93 ng/ml



#18 AR-1242-3

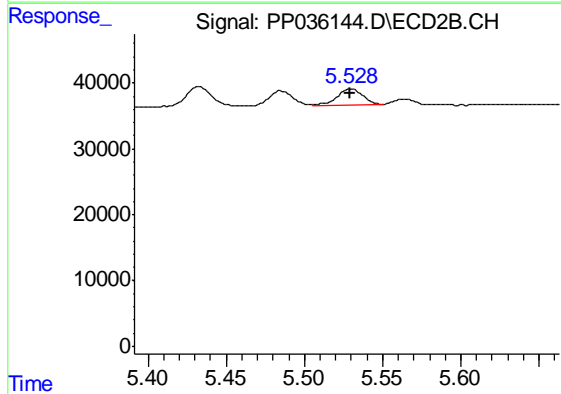
R.T.: 5.432 min
 Delta R.T.: 0.001 min
 Response: 34735
 Conc: 64.76 ng/ml



#19 AR-1242-4

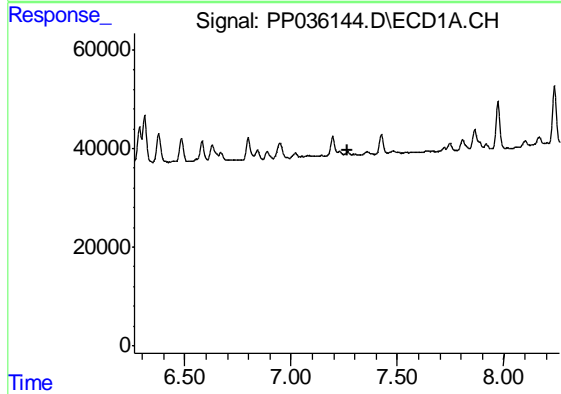
R.T.: 6.484 min
 Delta R.T.: 0.003 min
 Response: 61925
 Conc: 67.81 ng/ml

Instrument :
 ECD_P
 ClientSampleId :
 LOQ-WATER-02-QT2-2021



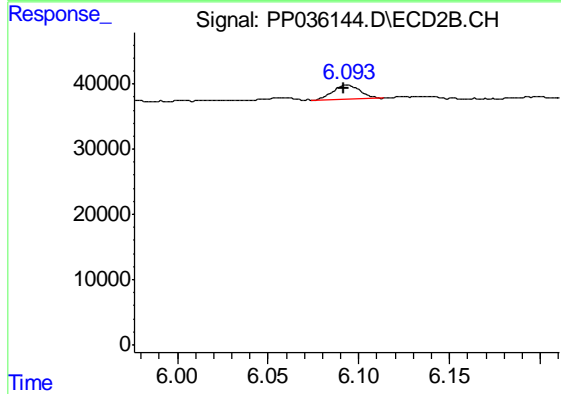
#19 AR-1242-4

R.T.: 5.529 min
 Delta R.T.: 0.000 min
 Response: 29820
 Conc: 60.43 ng/ml



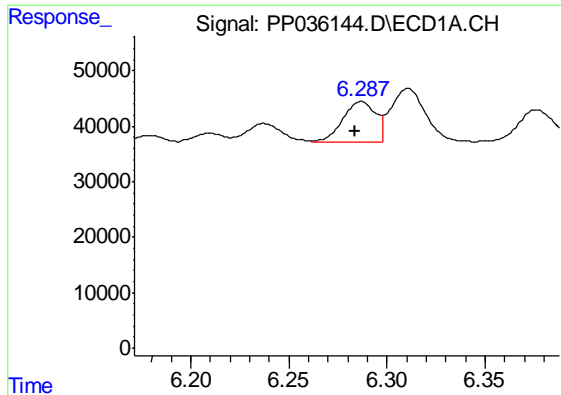
#20 AR-1242-5

R.T.: 0.000 min
 Exp R.T. : 7.263 min
 Response: 0
 Conc: N.D.



#20 AR-1242-5

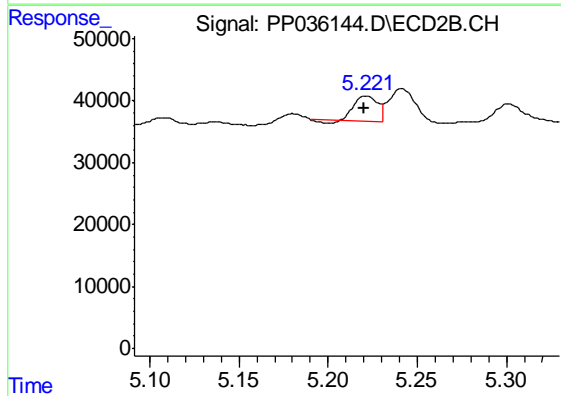
R.T.: 6.093 min
 Delta R.T.: 0.002 min
 Response: 23033
 Conc: 35.59 ng/ml



#21 AR-1248-1

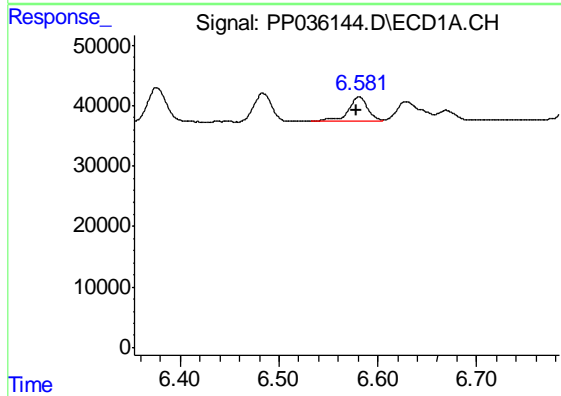
R.T.: 6.287 min
 Delta R.T.: 0.003 min
 Response: 86060
 Conc: 92.44 ng/ml

Instrument :
 ECD_P
 ClientSampleId :
 LOQ-WATER-02-QT2-2021



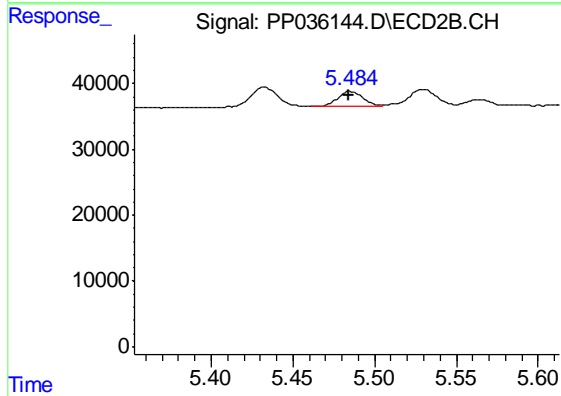
#21 AR-1248-1

R.T.: 5.221 min
 Delta R.T.: 0.000 min
 Response: 34847
 Conc: 64.96 ng/ml



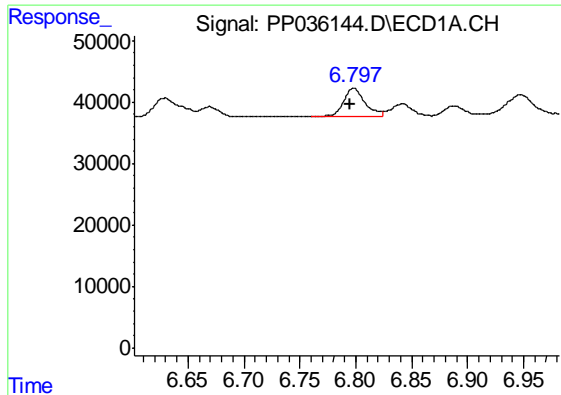
#22 AR-1248-2

R.T.: 6.581 min
 Delta R.T.: 0.003 min
 Response: 55841
 Conc: 46.71 ng/ml



#22 AR-1248-2

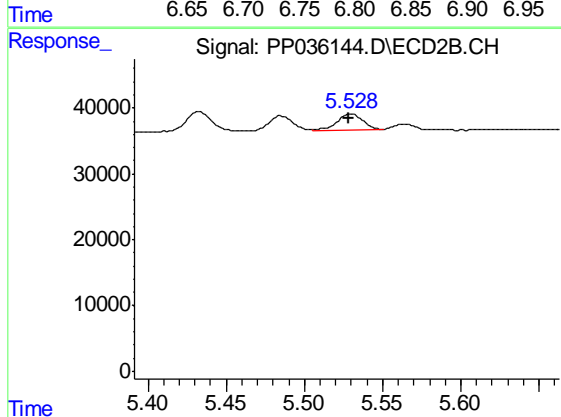
R.T.: 5.484 min
 Delta R.T.: 0.000 min
 Response: 24745
 Conc: 35.46 ng/ml



#23 AR-1248-3

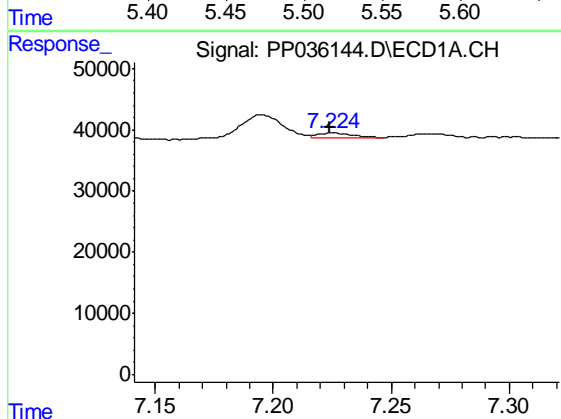
R.T.: 6.798 min
 Delta R.T.: 0.003 min
 Response: 58725
 Conc: 40.53 ng/ml

Instrument :
 ECD_P
 ClientSampleId :
 LOQ-WATER-02-QT2-2021



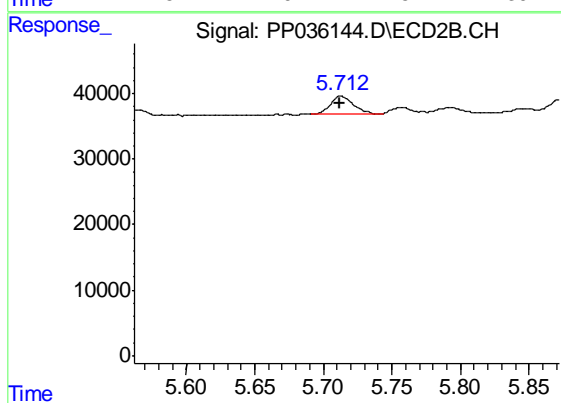
#23 AR-1248-3

R.T.: 5.529 min
 Delta R.T.: 0.000 min
 Response: 29820
 Conc: 41.43 ng/ml



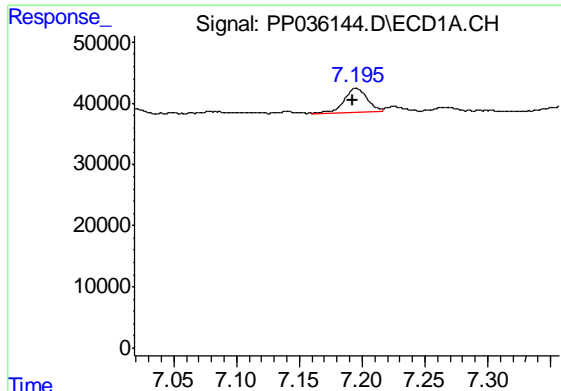
#24 AR-1248-4

R.T.: 7.225 min
 Delta R.T.: 0.001 min
 Response: 8504
 Conc: 5.34 ng/ml



#24 AR-1248-4

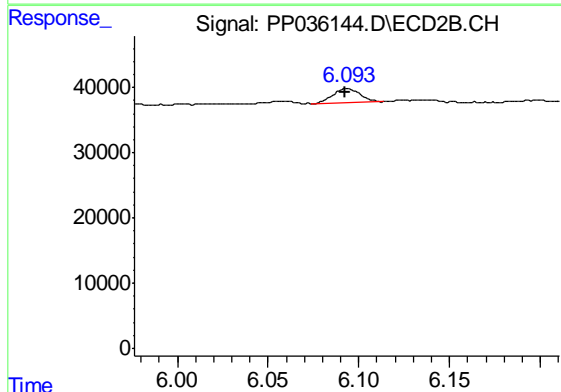
R.T.: 5.713 min
 Delta R.T.: 0.000 min
 Response: 32887
 Conc: 37.24 ng/ml



#26 AR-1254-1

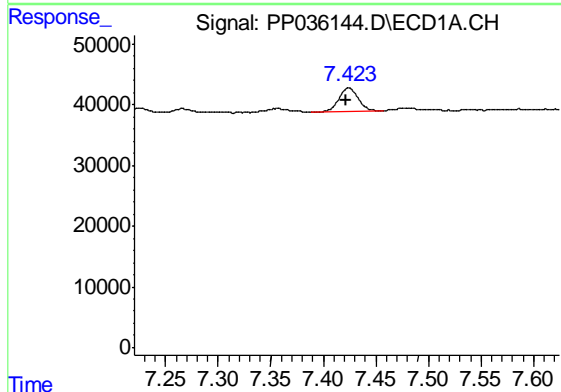
R.T.: 7.195 min
 Delta R.T.: 0.003 min
 Response: 50641
 Conc: 31.26 ng/ml

Instrument :
 ECD_P
 ClientSampleId :
 LOQ-WATER-02-QT2-2021



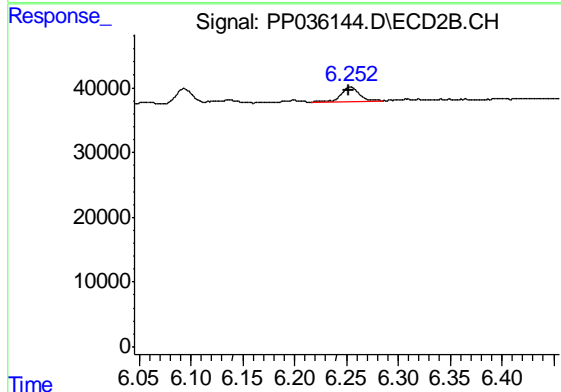
#26 AR-1254-1

R.T.: 6.093 min
 Delta R.T.: 0.001 min
 Response: 23033
 Conc: 17.63 ng/ml



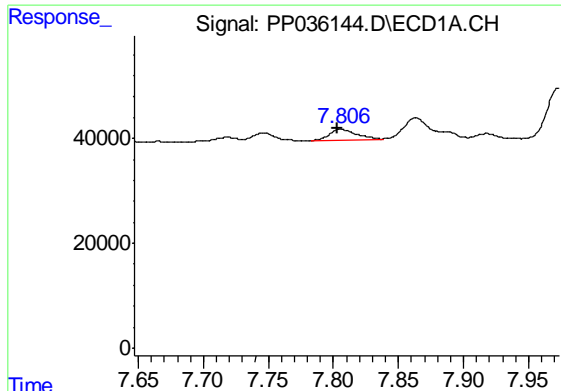
#27 AR-1254-2

R.T.: 7.424 min
 Delta R.T.: 0.002 min
 Response: 49915
 Conc: 20.26 ng/ml



#27 AR-1254-2

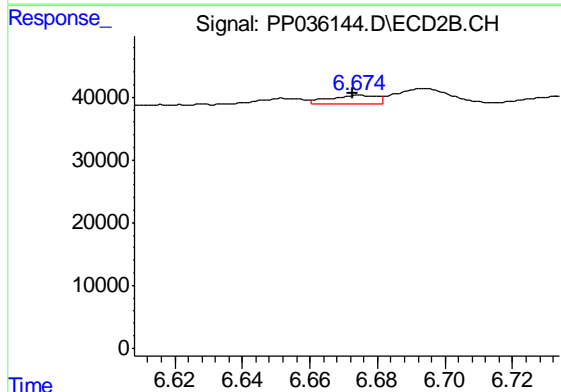
R.T.: 6.254 min
 Delta R.T.: 0.001 min
 Response: 26851
 Conc: 23.29 ng/ml



#28 AR-1254-3

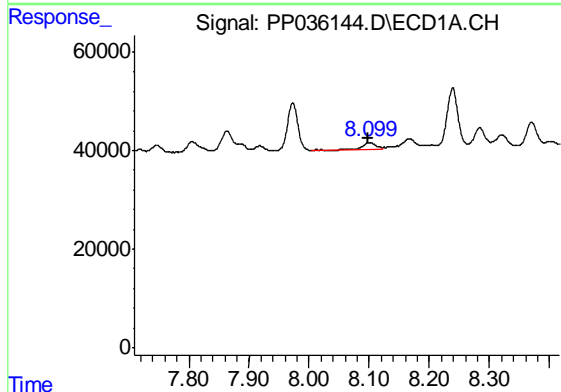
R.T.: 7.805 min
 Delta R.T.: 0.002 min
 Response: 32861
 Conc: 12.46 ng/ml

Instrument :
 ECD_P
 ClientSampleId :
 LOQ-WATER-02-QT2-2021



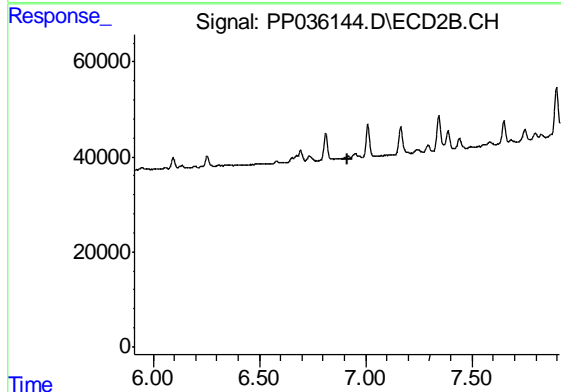
#28 AR-1254-3

R.T.: 6.675 min
 Delta R.T.: 0.002 min
 Response: 14406
 Conc: 7.57 ng/ml



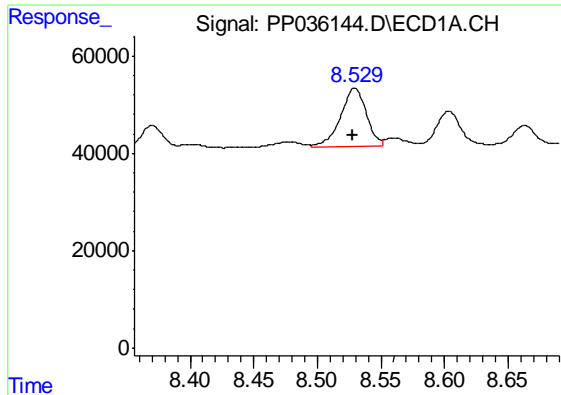
#29 AR-1254-4

R.T.: 8.100 min
 Delta R.T.: 0.000 min
 Response: 20222
 Conc: 10.02 ng/ml



#29 AR-1254-4

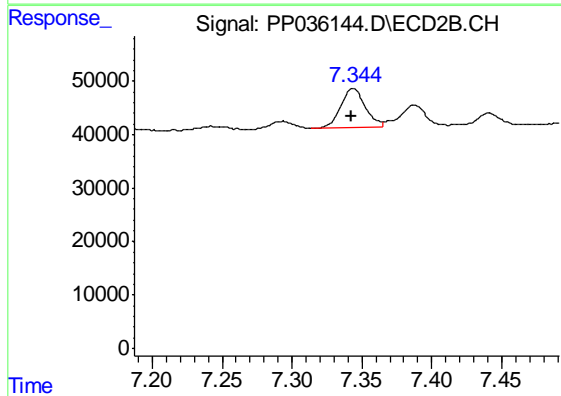
R.T.: 0.000 min
 Exp R.T. : 6.912 min
 Response: 0
 Conc: N.D.



#30 AR-1254-5

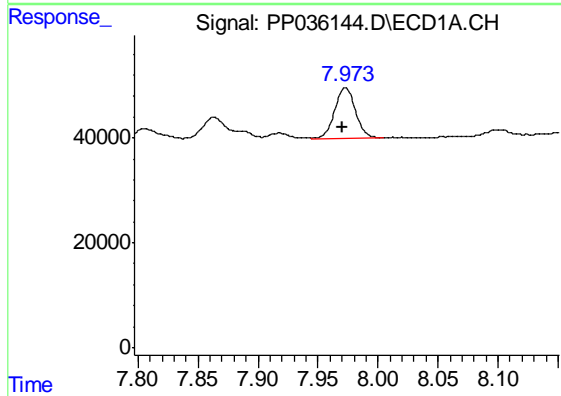
R.T.: 8.529 min
 Delta R.T.: 0.002 min
 Response: 170168
 Conc: 74.99 ng/ml

Instrument :
 ECD_P
 ClientSampleId :
 LOQ-WATER-02-QT2-2021



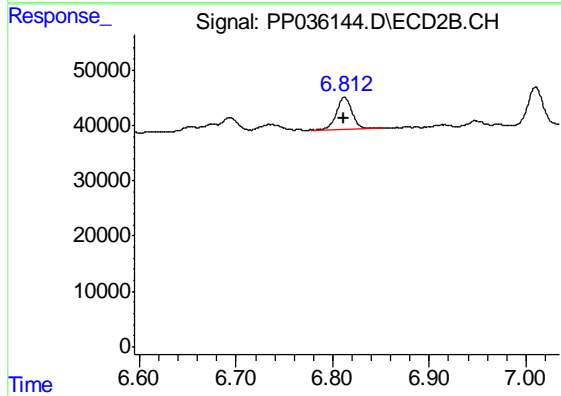
#30 AR-1254-5

R.T.: 7.344 min
 Delta R.T.: 0.001 min
 Response: 91551
 Conc: 53.66 ng/ml



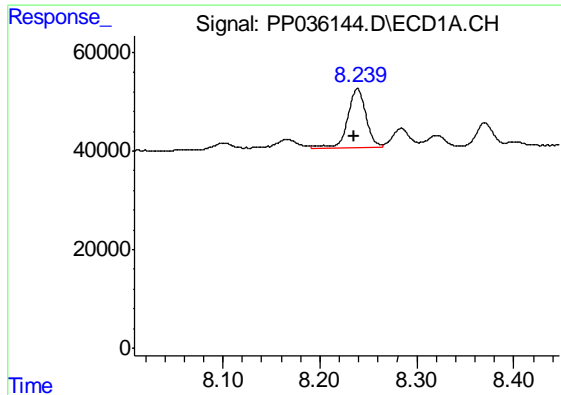
#31 AR-1260-1

R.T.: 7.973 min
 Delta R.T.: 0.003 min
 Response: 115703
 Conc: 57.12 ng/ml



#31 AR-1260-1

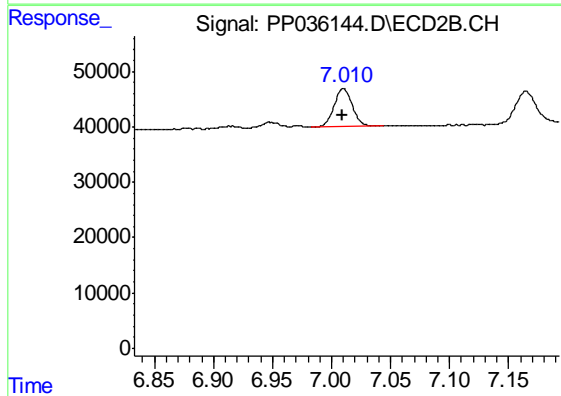
R.T.: 6.812 min
 Delta R.T.: 0.000 min
 Response: 65720
 Conc: 52.67 ng/ml



#32 AR-1260-2

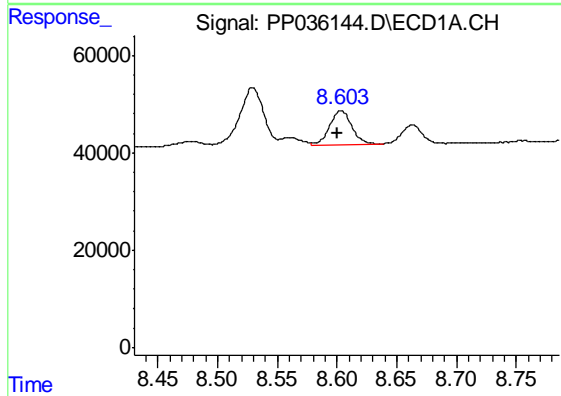
R.T.: 8.239 min
 Delta R.T.: 0.004 min
 Response: 160723
 Conc: 65.79 ng/ml

Instrument :
 ECD_P
 ClientSampleId :
 LOQ-WATER-02-QT2-2021



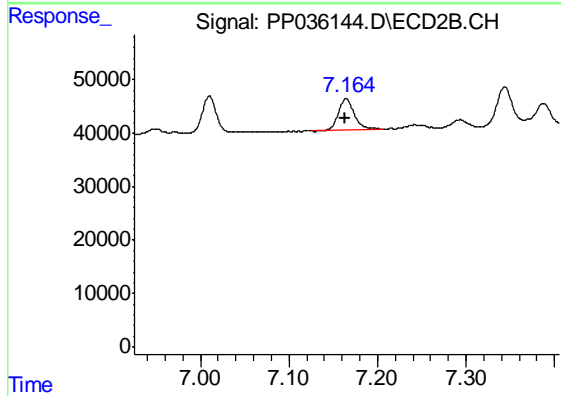
#32 AR-1260-2

R.T.: 7.010 min
 Delta R.T.: 0.001 min
 Response: 75159
 Conc: 49.87 ng/ml



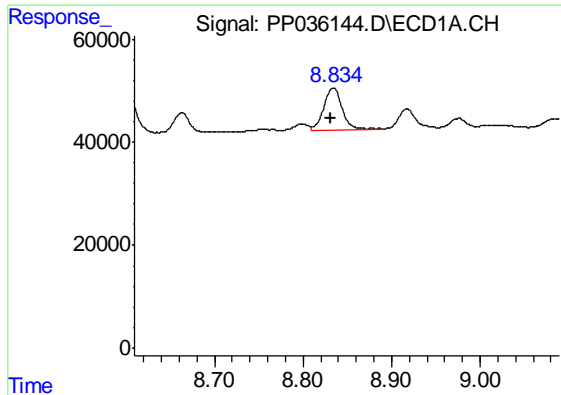
#33 AR-1260-3

R.T.: 8.603 min
 Delta R.T.: 0.003 min
 Response: 92772
 Conc: 49.96 ng/ml



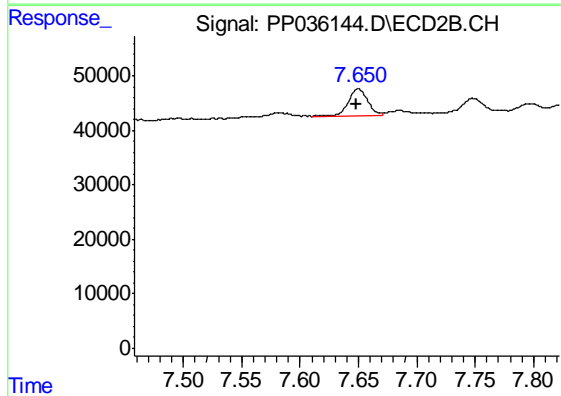
#33 AR-1260-3

R.T.: 7.165 min
 Delta R.T.: 0.000 min
 Response: 74127
 Conc: 52.74 ng/ml

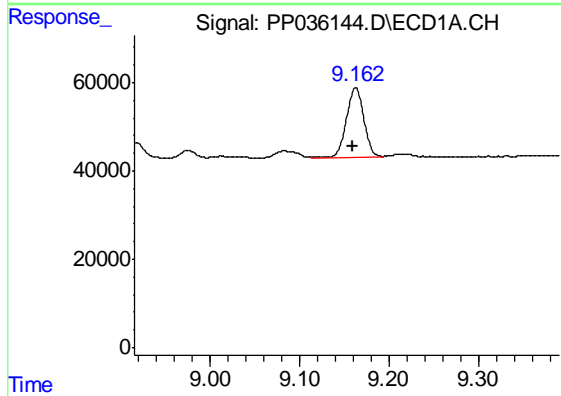


#34 AR-1260-4
 R.T.: 8.834 min
 Delta R.T.: 0.003 min
 Response: 118525
 Conc: 53.08 ng/ml

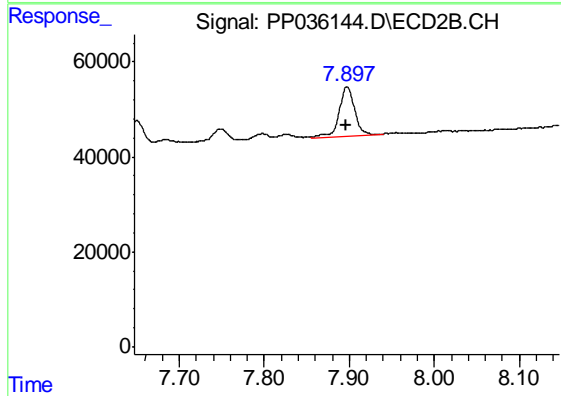
Instrument :
 ECD_P
 ClientSampleId :
 LOQ-WATER-02-QT2-2021



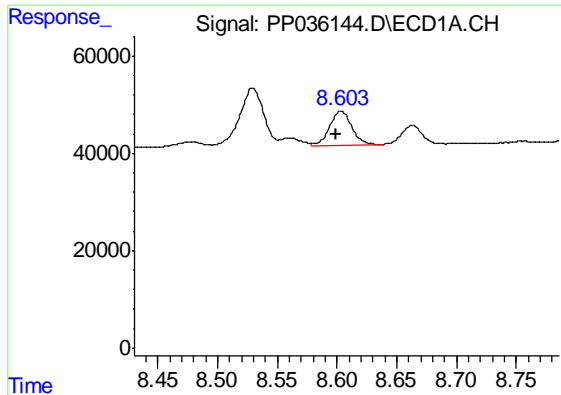
#34 AR-1260-4
 R.T.: 7.650 min
 Delta R.T.: 0.002 min
 Response: 55854
 Conc: 47.77 ng/ml



#35 AR-1260-5
 R.T.: 9.163 min
 Delta R.T.: 0.003 min
 Response: 215989
 Conc: 50.59 ng/ml



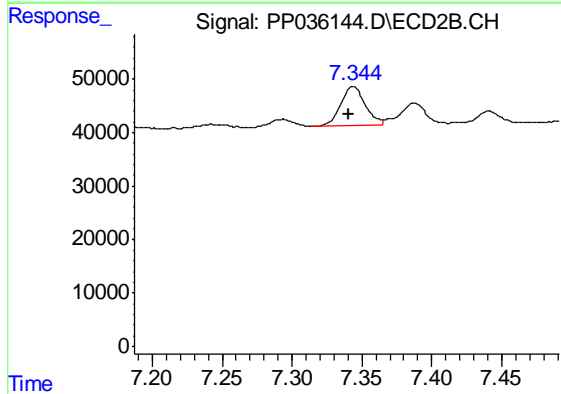
#35 AR-1260-5
 R.T.: 7.898 min
 Delta R.T.: 0.000 min
 Response: 133286
 Conc: 48.15 ng/ml



#36 AR-1262-1

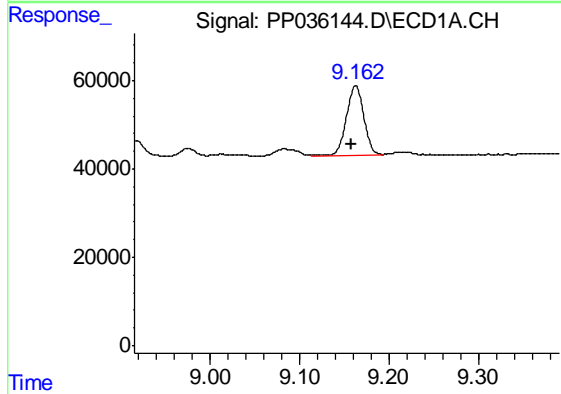
R.T.: 8.603 min
 Delta R.T.: 0.004 min
 Response: 92772
 Conc: 36.81 ng/ml

Instrument :
 ECD_P
 ClientSampleId :
 LOQ-WATER-02-QT2-2021



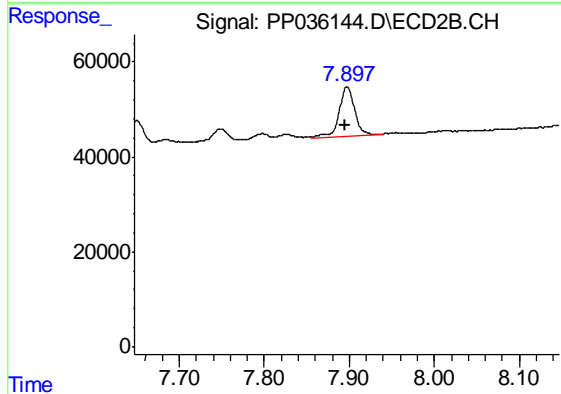
#36 AR-1262-1

R.T.: 7.344 min
 Delta R.T.: 0.003 min
 Response: 91551
 Conc: 101.27 ng/ml



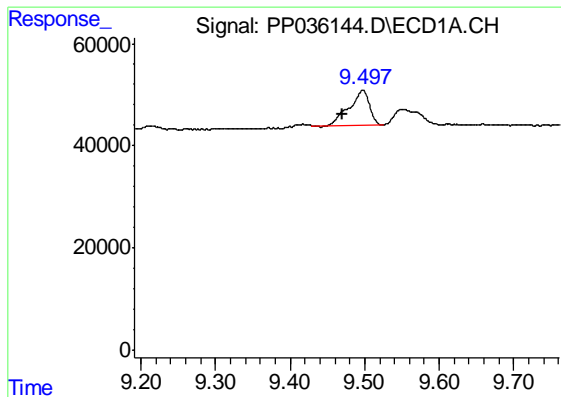
#37 AR-1262-2

R.T.: 9.163 min
 Delta R.T.: 0.005 min
 Response: 215989
 Conc: 47.93 ng/ml



#37 AR-1262-2

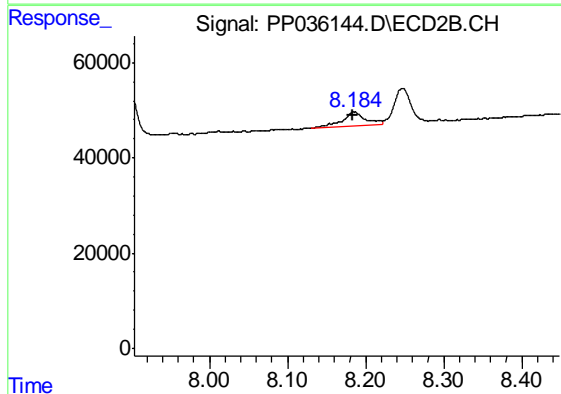
R.T.: 7.898 min
 Delta R.T.: 0.003 min
 Response: 133286
 Conc: 44.77 ng/ml



#38 AR-1262-3

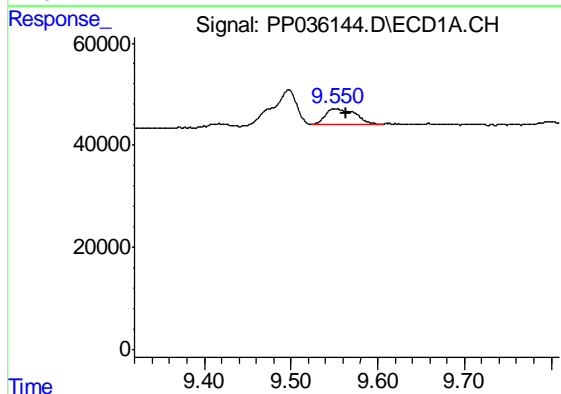
R.T.: 9.497 min
 Delta R.T.: 0.027 min
 Response: 129640
 Conc: 40.17 ng/ml

Instrument :
 ECD_P
 ClientSampleId :
 LOQ-WATER-02-QT2-2021



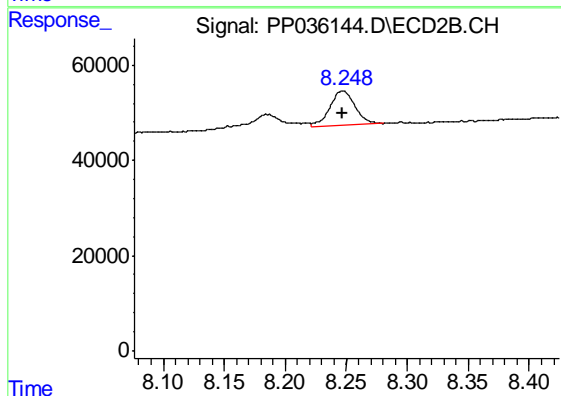
#38 AR-1262-3

R.T.: 8.185 min
 Delta R.T.: 0.003 min
 Response: 58093
 Conc: 48.89 ng/ml



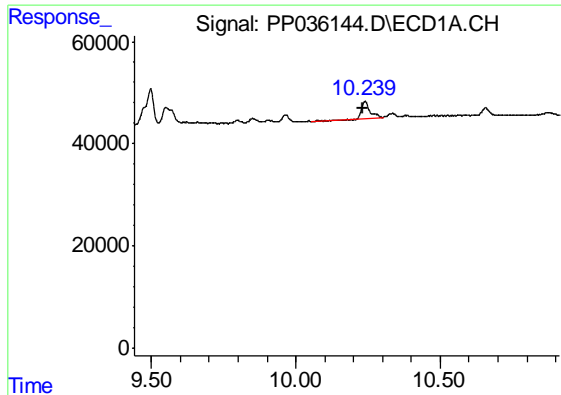
#39 AR-1262-4

R.T.: 9.551 min
 Delta R.T.: -0.013 min
 Response: 73613
 Conc: 27.45 ng/ml



#39 AR-1262-4

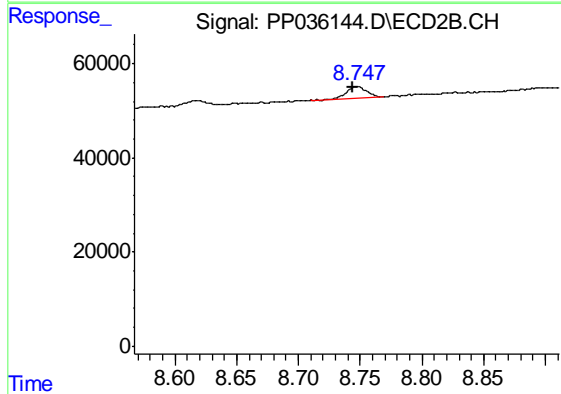
R.T.: 8.248 min
 Delta R.T.: 0.000 min
 Response: 102952
 Conc: 46.70 ng/ml



#40 AR-1262-5

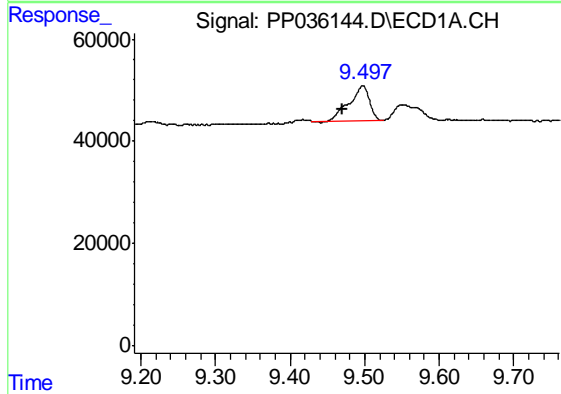
R.T.: 10.239 min
 Delta R.T.: 0.004 min
 Response: 74393
 Conc: 41.77 ng/ml

Instrument :
 ECD_P
 ClientSampleId :
 LOQ-WATER-02-QT2-2021



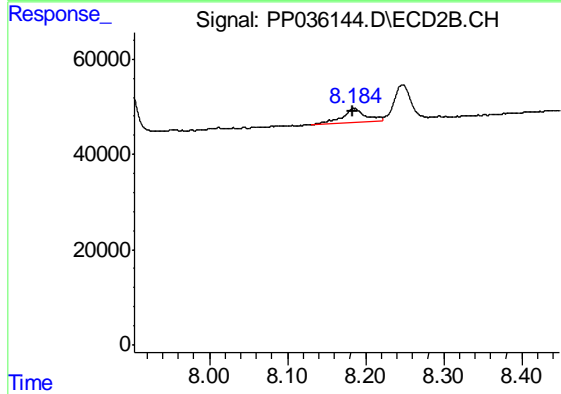
#40 AR-1262-5

R.T.: 8.748 min
 Delta R.T.: 0.003 min
 Response: 26918
 Conc: 26.47 ng/ml



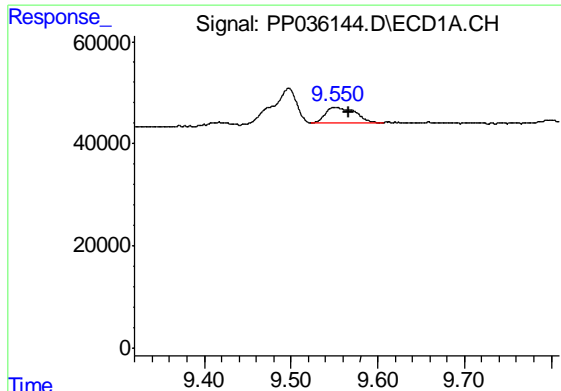
#41 AR-1268-1

R.T.: 9.497 min
 Delta R.T.: 0.028 min
 Response: 129640
 Conc: 25.04 ng/ml



#41 AR-1268-1

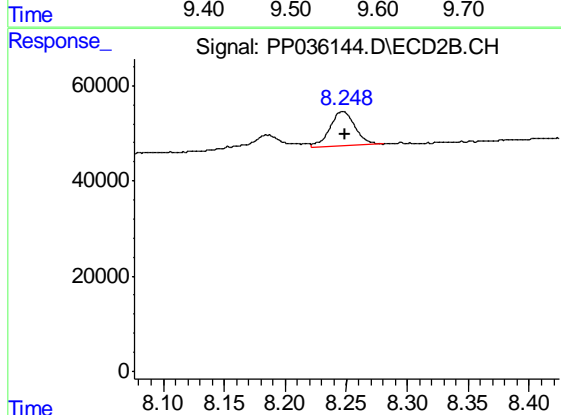
R.T.: 8.185 min
 Delta R.T.: 0.001 min
 Response: 58093
 Conc: 17.10 ng/ml



#42 AR-1268-2

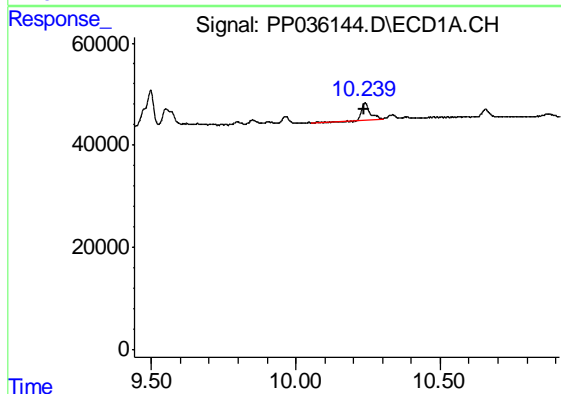
R.T.: 9.551 min
 Delta R.T.: -0.015 min
 Response: 73613
 Conc: 14.73 ng/ml

Instrument :
 ECD_P
 ClientSampleId :
 LOQ-WATER-02-QT2-2021



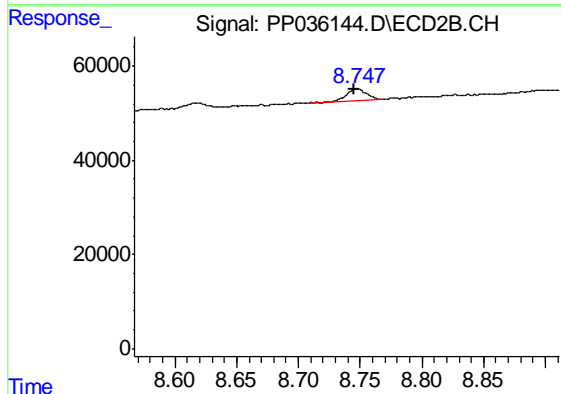
#42 AR-1268-2

R.T.: 8.248 min
 Delta R.T.: -0.001 min
 Response: 102952
 Conc: 33.34 ng/ml



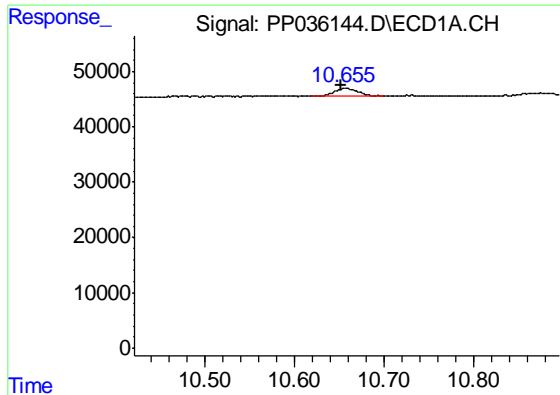
#44 AR-1268-4

R.T.: 10.239 min
 Delta R.T.: 0.003 min
 Response: 74393
 Conc: 38.12 ng/ml



#44 AR-1268-4

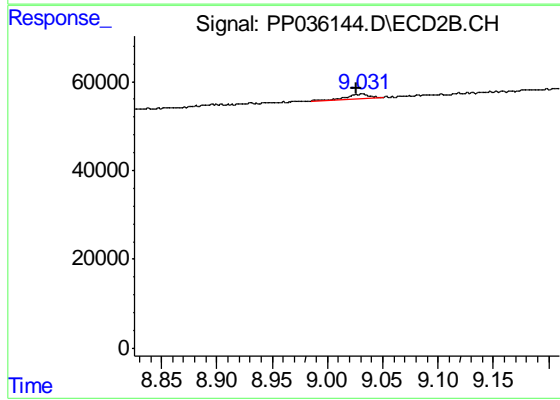
R.T.: 8.748 min
 Delta R.T.: 0.003 min
 Response: 26918
 Conc: 24.43 ng/ml



#45 AR-1268-5

R.T.: 10.657 min
Delta R.T.: 0.005 min
Response: 26780
Conc: 1.98 ng/ml

Instrument :
ECD_P
ClientSampleId :
LOQ-WATER-02-QT2-2021



#45 AR-1268-5

R.T.: 9.031 min
Delta R.T.: 0.005 min
Response: 14691
Conc: 1.72 ng/ml