

Data Path : Z:\pestpcbsrv\HPCHEM1\ECD\_P\Data\PP052621\  
 Data File : PP036148.D  
 Signal(s) : Signal #1: ECD1A.CH Signal #2: ECD2B.CH  
 Acq On : 26 May 2021 20:12  
 Operator : DD\AJ  
 Sample : M2262-08  
 Misc : AR1248 LOQ 50 PPB  
 ALS Vial : 35 Sample Multiplier: 1

Instrument :  
 ECD\_P  
 ClientSampleId :  
 LOQ-WATER-02-QT2-2021

Integration File signal 1: autoint1.e  
 Integration File signal 2: autoint2.e  
 Quant Time: May 27 07:43:22 2021  
 Quant Method : Z:\pestpcbsrv\HPCHEM1\ECD\_P\methods\PP052521.M  
 Quant Title : GC EXTRACTABLES  
 QLast Update : Wed May 26 00:48:29 2021  
 Response via : Initial Calibration  
 Integrator: ChemStation 6890 Scale Mode: Small noise peaks clipped

Volume Inj. : 2 µl  
 Signal #1 Phase : ZB-MR1 Signal #2 Phase: ZB-MR2  
 Signal #1 Info : 30Mx0.32mmx 0.50µ Signal #2 Info : 30M x 0.32mm x 0.25µm

Compound	RT#1	RT#2	Resp#1	Resp#2	ng/ml	ng/ml
-----						
System Monitoring Compounds						
1) SA Tetrachlo...	4.969	3.966	819309	504970	18.408	18.093
2) SA Decachlor...	10.999	9.277	856557	445648	20.043	19.425
Target Compounds						
3) L1 AR-1016-1	6.288	5.221	53805	16987	33.570	18.237 #
4) L1 AR-1016-2	6.312	5.242	61969	24429	27.348	18.699 #
5) L1 AR-1016-3	6.377	5.434	36456	19936	25.175	28.194
6) L1 AR-1016-4	6.483	5.486	34009	35666	28.085	67.141 #
7) L1 AR-1016-5	6.799	5.713	82692	45213	69.829	65.991
8) L2 AR-1221-1	5.220	0.000	16085	0	29.270	N.D. #
9) L2 AR-1221-2	5.320	0.000	12113	0	29.061	N.D. #
12) L3 AR-1232-2	5.987	5.242	54327	24429	108.112	46.600 #
13) L3 AR-1232-3	6.312	5.434	61969	19936	66.491	71.966
14) L3 AR-1232-4	6.483	5.530	34009	36717	70.341	161.815 #
15) L3 AR-1232-5	6.581	5.713	74067	45213	230.433	181.416
16) L4 AR-1242-1	6.288	5.221	53805	16987	44.671	23.593 #
17) L4 AR-1242-2	6.312	5.242	61969	24429	36.788	24.971 #
18) L4 AR-1242-3	6.377	5.434	36456	19936	33.215	37.169
19) L4 AR-1242-4	6.483	5.530	34009	36717	37.241	74.402 #
20) L4 AR-1242-5	7.267	6.094	90017	63255	94.428	97.747
21) L5 AR-1248-1	6.288	5.221	53805	16987	57.794	31.665 #
22) L5 AR-1248-2	6.581	5.486	74067	35666	61.951	51.110
23) L5 AR-1248-3	6.799	5.530	82692	36717	57.073	51.017
24) L5 AR-1248-4	7.227	5.713	90671	45213	56.933	51.192
25) L5 AR-1248-5	7.267	6.137	90017	45240	57.659	51.445
26) L6 AR-1254-1	7.197	6.094	77773	63255	48.004	48.405
27) L6 AR-1254-2	7.431	6.255	93429	18522	37.927	16.065 #
28) L6 AR-1254-3	7.807	6.674	49211	27738	18.654	14.568
29) L6 AR-1254-4	8.104	6.914	38446	22687	19.047	19.000
30) L6 AR-1254-5	8.530	7.346	5426	8087	2.391	4.740 #
31) L7 AR-1260-1	0.000	6.820	0	15391	N.D.	12.335 #
32) L7 AR-1260-2	8.232	0.000	43844	0	17.947	N.D. #
36) L8 AR-1262-1	0.000	7.346	0	8087	N.D.	8.945 #
39) L8 AR-1262-4	0.000	8.254	0	37578	N.D.	17.046 #
42) L9 AR-1268-2	0.000	8.254	0	37578	N.D.	12.168 #
45) L9 AR-1268-5	0.000	9.028	0	4909	N.D.	0.575 #

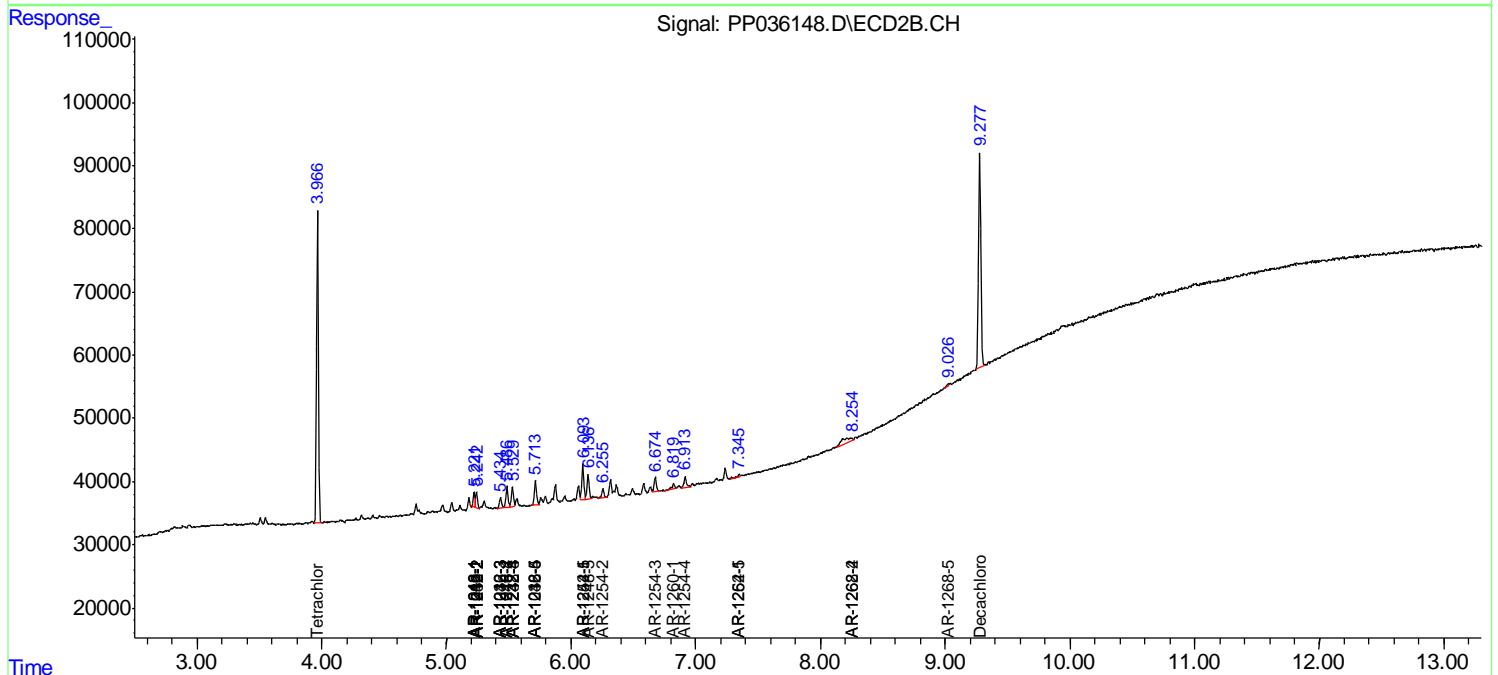
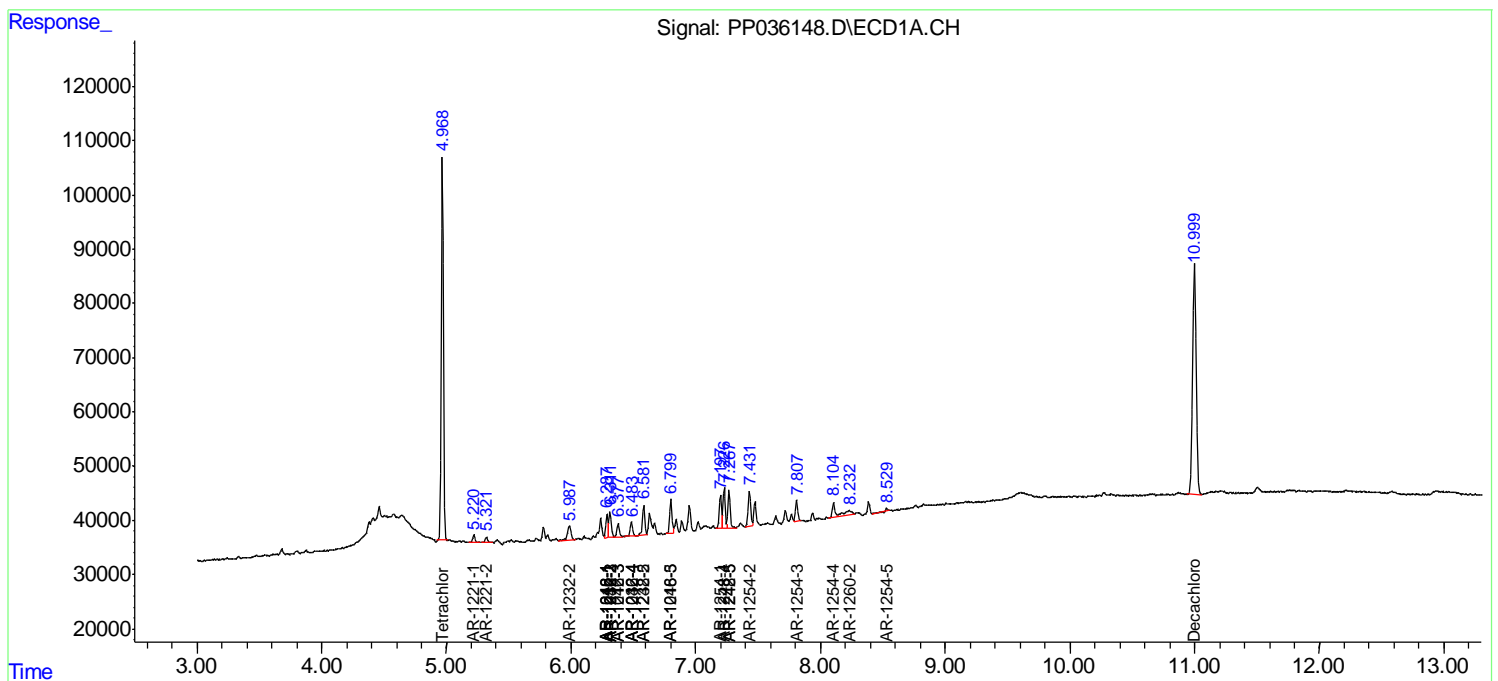
(f)=RT Delta > 1/2 Window (#)=Amounts differ by > 25% (m)=manual int.

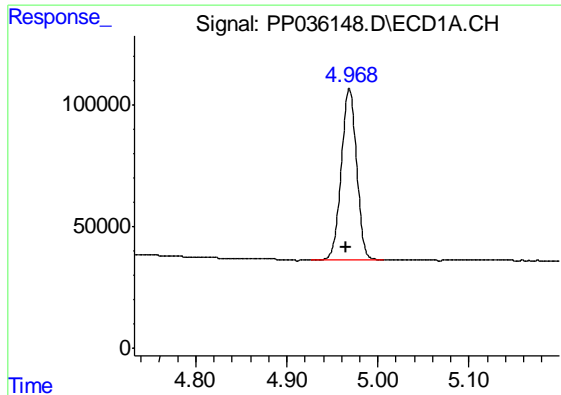
Data Path : Z:\pestpcbsrv\HPCHEM1\ECD\_P\Data\PP052621\  
 Data File : PP036148.D  
 Signal(s) : Signal #1: ECD1A.CH Signal #2: ECD2B.CH  
 Acq On : 26 May 2021 20:12  
 Operator : DD\AJ  
 Sample : M2262-08  
 Misc : AR1248 LOQ 50 PPB  
 ALS Vial : 35 Sample Multiplier: 1

**Instrument :**  
 ECD\_P  
**Client Sampled :**  
 LOQ-WATER-02-QT2-2021

Integration File signal 1: autoint1.e  
 Integration File signal 2: autoint2.e  
 Quant Time: May 27 07:43:22 2021  
 Quant Method : Z:\pestpcbsrv\HPCHEM1\ECD\_P\methods\PP052521.M  
 Quant Title : GC EXTRACTABLES  
 QLast Update : Wed May 26 00:48:29 2021  
 Response via : Initial Calibration  
 Integrator: ChemStation 6890 Scale Mode: Small noise peaks clipped

Volume Inj. : 2 µl  
 Signal #1 Phase : ZB-MR1 Signal #2 Phase: ZB-MR2  
 Signal #1 Info : 30Mx0.32mmx 0.50µ Signal #2 Info : 30M x 0.32mm x 0.25µm

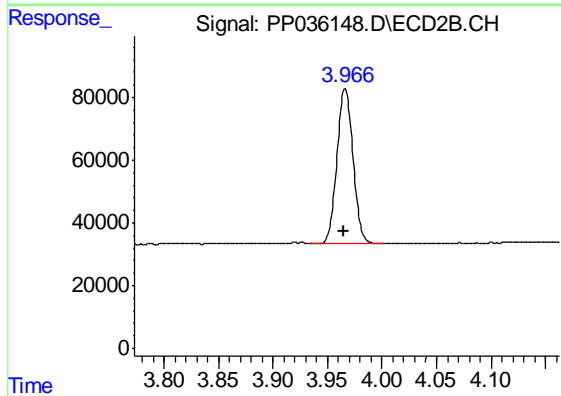




#1 Tetrachloro-m-xylene

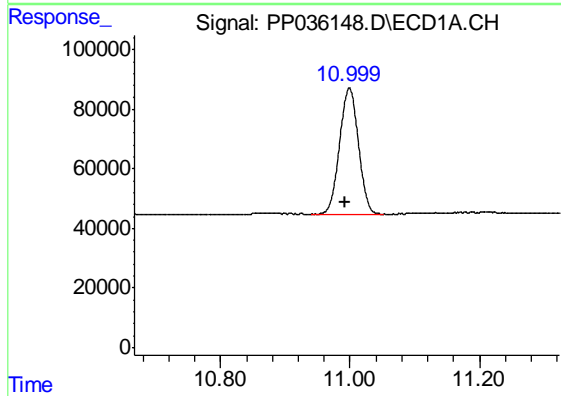
R.T.: 4.969 min  
 Delta R.T.: 0.004 min  
 Response: 819309  
 Conc: 18.41 ng/ml

Instrument :  
 ECD\_P  
 ClientSampleId :  
 LOQ-WATER-02-QT2-2021



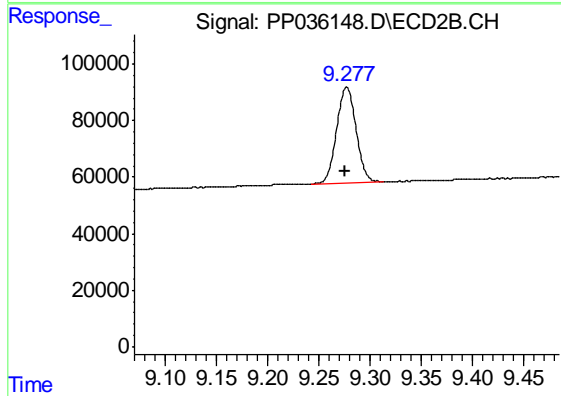
#1 Tetrachloro-m-xylene

R.T.: 3.966 min  
 Delta R.T.: 0.002 min  
 Response: 504970  
 Conc: 18.09 ng/ml



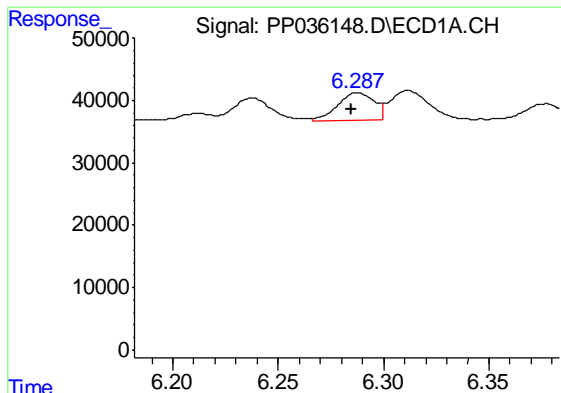
#2 Decachlorobiphenyl

R.T.: 10.999 min  
 Delta R.T.: 0.007 min  
 Response: 856557  
 Conc: 20.04 ng/ml



#2 Decachlorobiphenyl

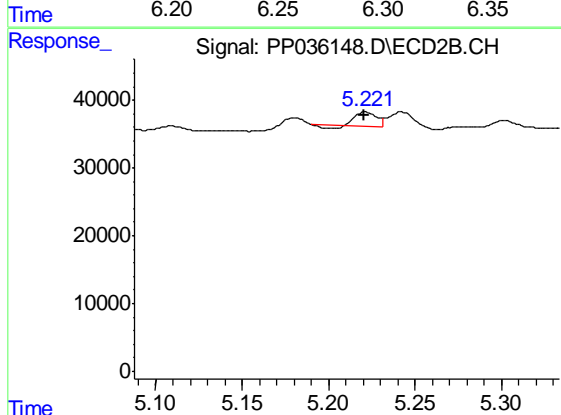
R.T.: 9.277 min  
 Delta R.T.: 0.002 min  
 Response: 445648  
 Conc: 19.43 ng/ml



#3 AR-1016-1

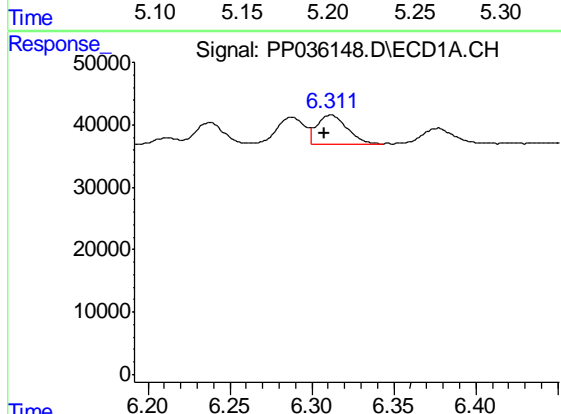
R.T.: 6.288 min  
 Delta R.T.: 0.003 min  
 Response: 53805  
 Conc: 33.57 ng/ml

Instrument :  
 ECD\_P  
 ClientSampleId :  
 LOQ-WATER-02-QT2-2021



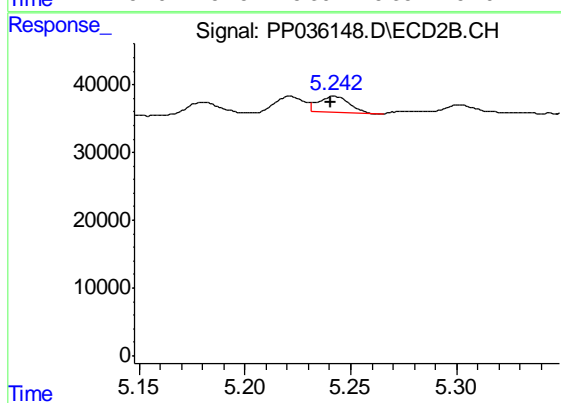
#3 AR-1016-1

R.T.: 5.221 min  
 Delta R.T.: 0.000 min  
 Response: 16987  
 Conc: 18.24 ng/ml



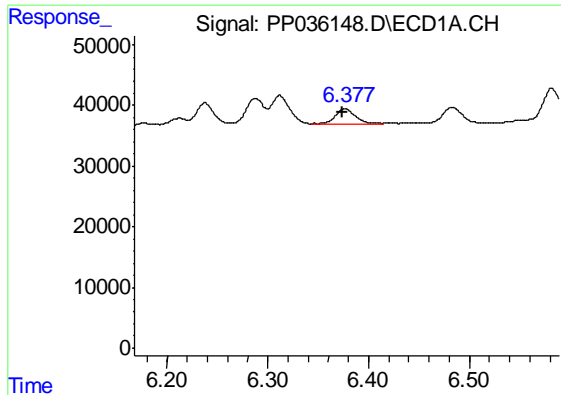
#4 AR-1016-2

R.T.: 6.312 min  
 Delta R.T.: 0.004 min  
 Response: 61969  
 Conc: 27.35 ng/ml



#4 AR-1016-2

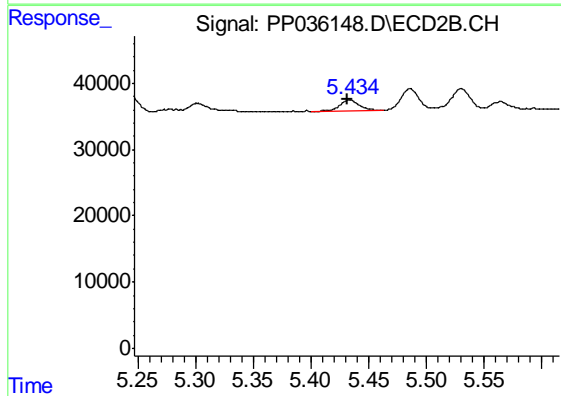
R.T.: 5.242 min  
 Delta R.T.: 0.001 min  
 Response: 24429  
 Conc: 18.70 ng/ml



#5 AR-1016-3

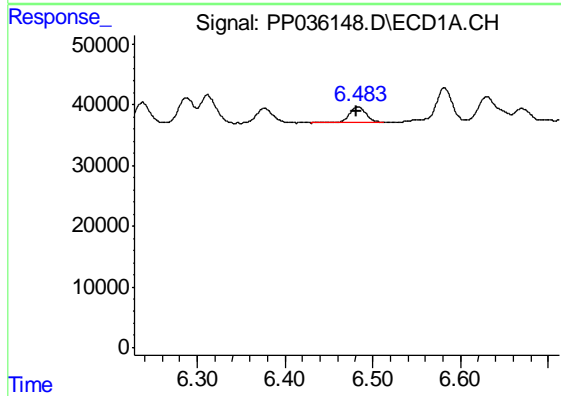
R.T.: 6.377 min  
 Delta R.T.: 0.003 min  
 Response: 36456  
 Conc: 25.18 ng/ml

Instrument :  
 ECD\_P  
 ClientSampleId :  
 LOQ-WATER-02-QT2-2021



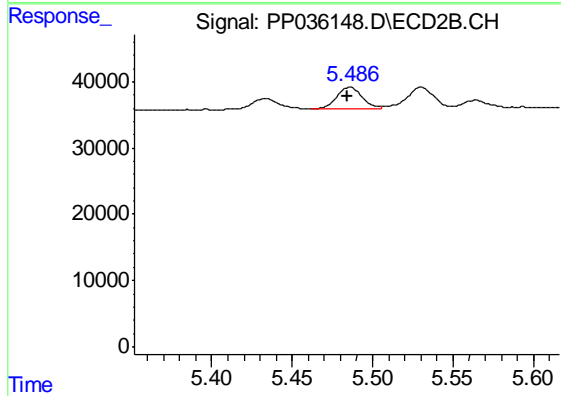
#5 AR-1016-3

R.T.: 5.434 min  
 Delta R.T.: 0.003 min  
 Response: 19936  
 Conc: 28.19 ng/ml



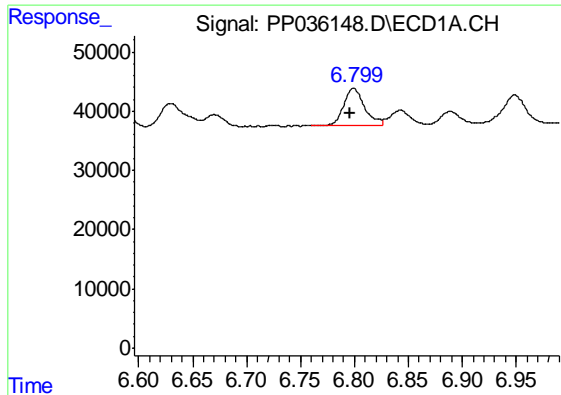
#6 AR-1016-4

R.T.: 6.483 min  
 Delta R.T.: 0.002 min  
 Response: 34009  
 Conc: 28.09 ng/ml



#6 AR-1016-4

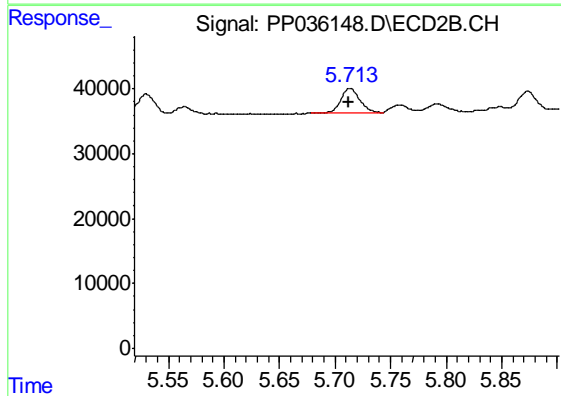
R.T.: 5.486 min  
 Delta R.T.: 0.001 min  
 Response: 35666  
 Conc: 67.14 ng/ml



#7 AR-1016-5

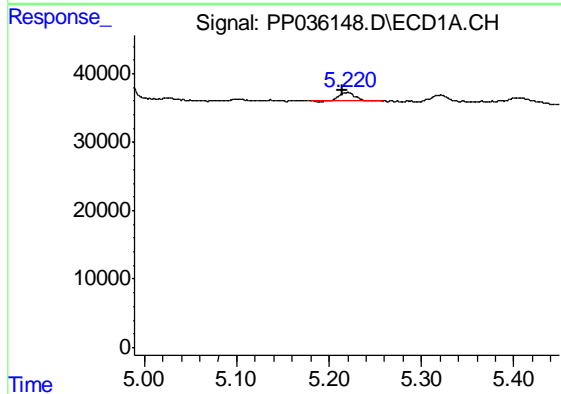
R.T.: 6.799 min  
 Delta R.T.: 0.004 min  
 Response: 82692  
 Conc: 69.83 ng/ml

Instrument :  
 ECD\_P  
 ClientSampleId :  
 LOQ-WATER-02-QT2-2021



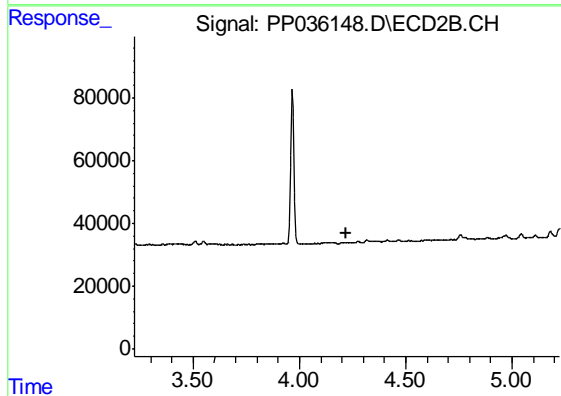
#7 AR-1016-5

R.T.: 5.713 min  
 Delta R.T.: 0.001 min  
 Response: 45213  
 Conc: 65.99 ng/ml



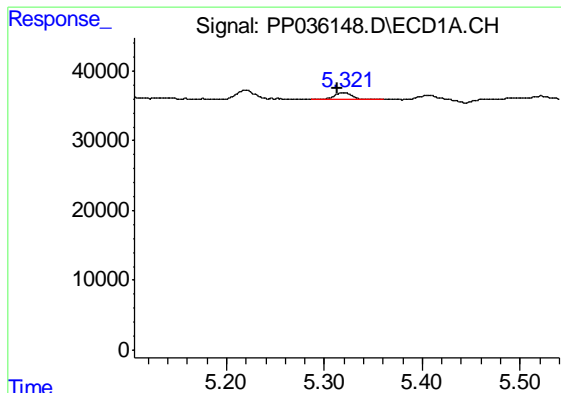
#8 AR-1221-1

R.T.: 5.220 min  
 Delta R.T.: 0.005 min  
 Response: 16085  
 Conc: 29.27 ng/ml



#8 AR-1221-1

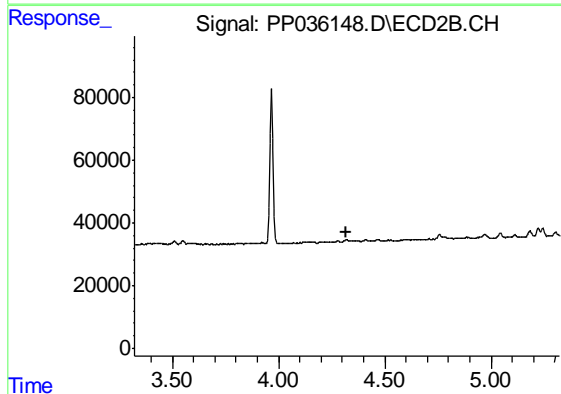
R.T.: 0.000 min  
 Exp R.T. : 4.223 min  
 Response: 0  
 Conc: N.D.



#9 AR-1221-2

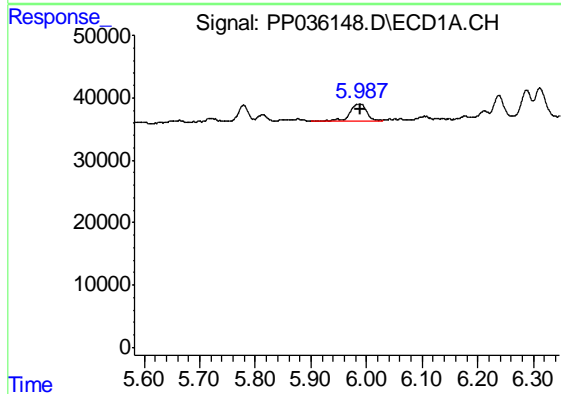
R.T.: 5.320 min  
 Delta R.T.: 0.007 min  
 Response: 12113  
 Conc: 29.06 ng/ml

Instrument :  
 ECD\_P  
 ClientSampleId :  
 LOQ-WATER-02-QT2-2021



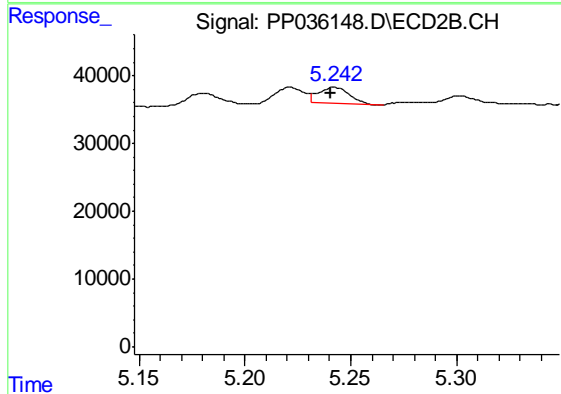
#9 AR-1221-2

R.T.: 0.000 min  
 Exp R.T. : 4.322 min  
 Response: 0  
 Conc: N.D.



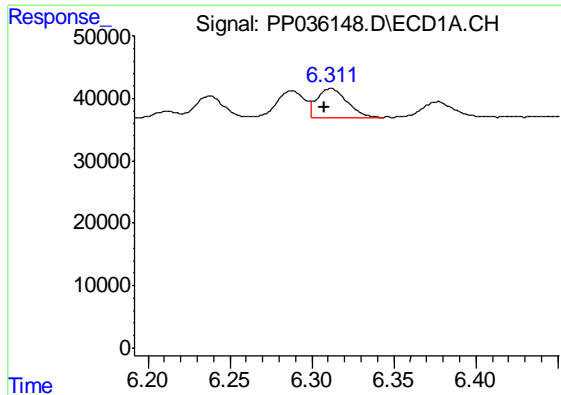
#12 AR-1232-2

R.T.: 5.987 min  
 Delta R.T.: -0.002 min  
 Response: 54327  
 Conc: 108.11 ng/ml



#12 AR-1232-2

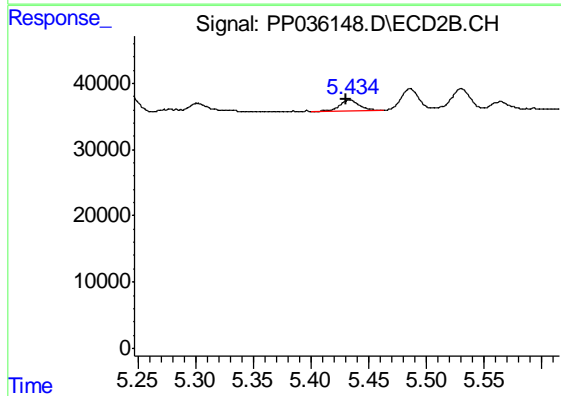
R.T.: 5.242 min  
 Delta R.T.: 0.001 min  
 Response: 24429  
 Conc: 46.60 ng/ml



#13 AR-1232-3

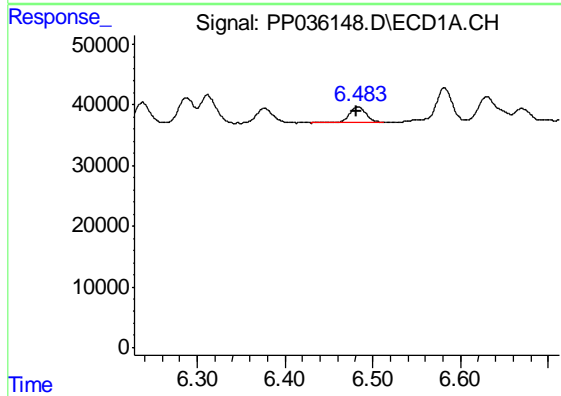
R.T.: 6.312 min  
 Delta R.T.: 0.004 min  
 Response: 61969  
 Conc: 66.49 ng/ml

Instrument :  
 ECD\_P  
 ClientSampleId :  
 LOQ-WATER-02-QT2-2021



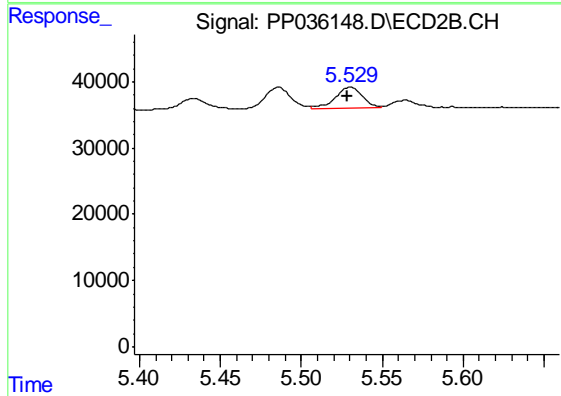
#13 AR-1232-3

R.T.: 5.434 min  
 Delta R.T.: 0.003 min  
 Response: 19936  
 Conc: 71.97 ng/ml



#14 AR-1232-4

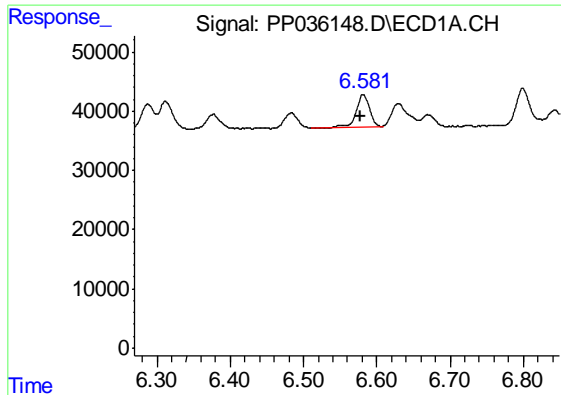
R.T.: 6.483 min  
 Delta R.T.: 0.002 min  
 Response: 34009  
 Conc: 70.34 ng/ml



#14 AR-1232-4

R.T.: 5.530 min  
 Delta R.T.: 0.001 min  
 Response: 36717  
 Conc: 161.82 ng/ml

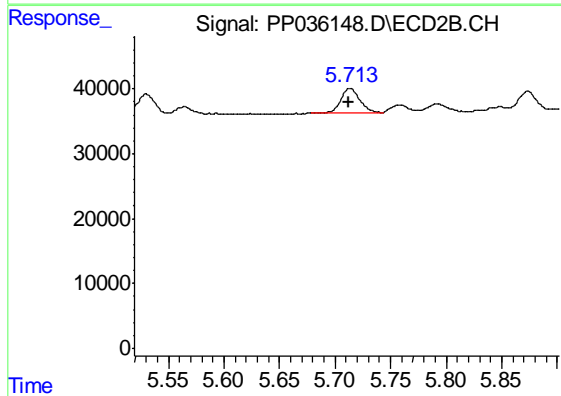




#15 AR-1232-5

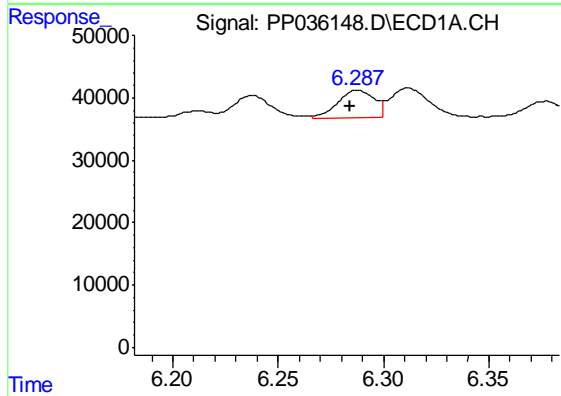
R.T.: 6.581 min  
 Delta R.T.: 0.003 min  
 Response: 74067  
 Conc: 230.43 ng/ml

Instrument :  
 ECD\_P  
 ClientSampleId :  
 LOQ-WATER-02-QT2-2021



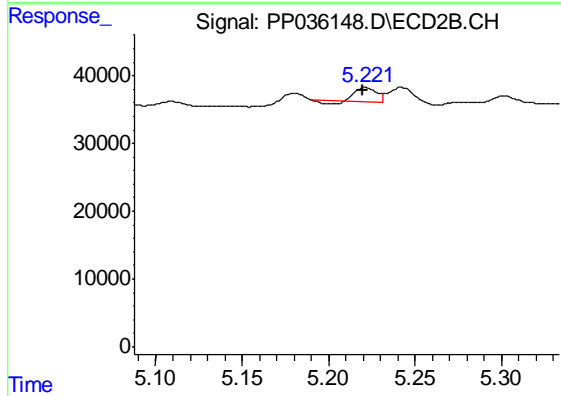
#15 AR-1232-5

R.T.: 5.713 min  
 Delta R.T.: 0.001 min  
 Response: 45213  
 Conc: 181.42 ng/ml



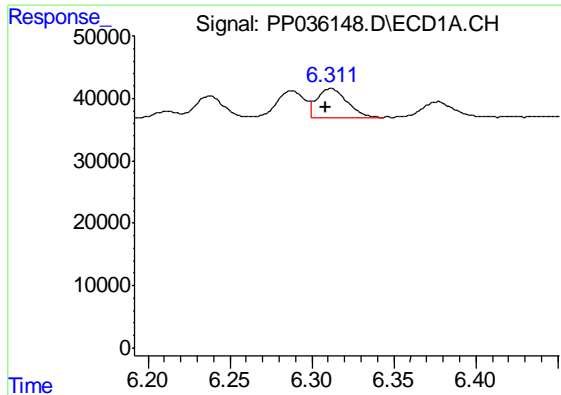
#16 AR-1242-1

R.T.: 6.288 min  
 Delta R.T.: 0.003 min  
 Response: 53805  
 Conc: 44.67 ng/ml



#16 AR-1242-1

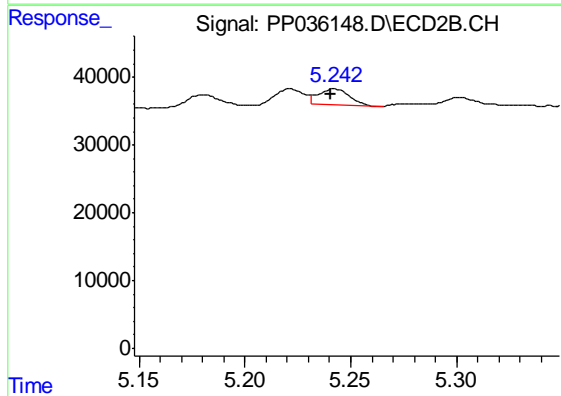
R.T.: 5.221 min  
 Delta R.T.: 0.001 min  
 Response: 16987  
 Conc: 23.59 ng/ml



#17 AR-1242-2

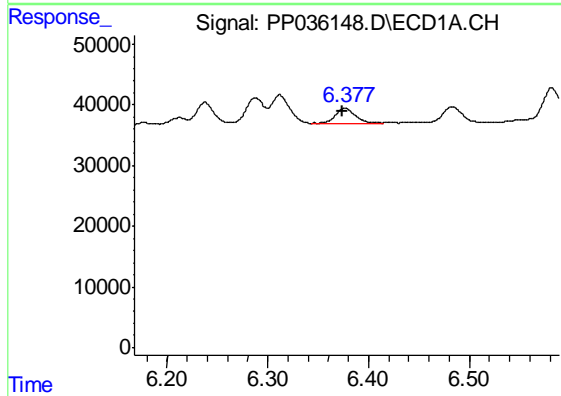
R.T.: 6.312 min  
 Delta R.T.: 0.003 min  
 Response: 61969  
 Conc: 36.79 ng/ml

Instrument :  
 ECD\_P  
 ClientSampleId :  
 LOQ-WATER-02-QT2-2021



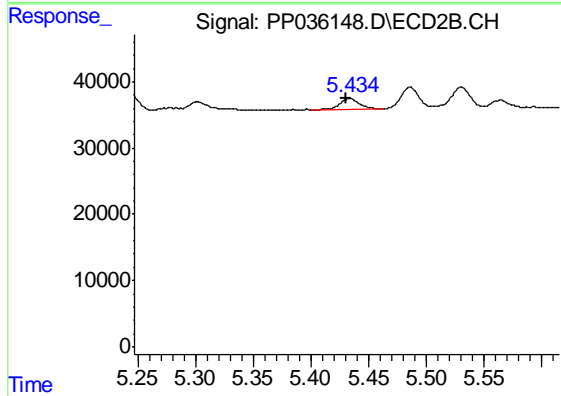
#17 AR-1242-2

R.T.: 5.242 min  
 Delta R.T.: 0.001 min  
 Response: 24429  
 Conc: 24.97 ng/ml



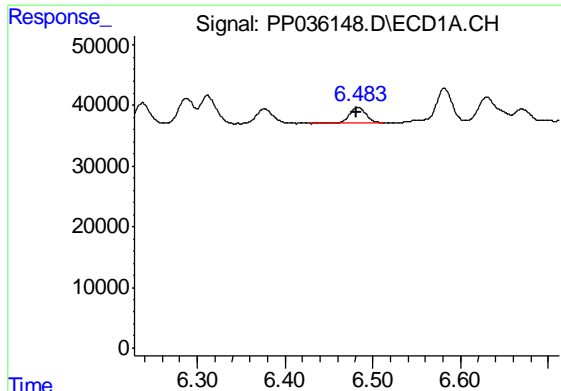
#18 AR-1242-3

R.T.: 6.377 min  
 Delta R.T.: 0.003 min  
 Response: 36456  
 Conc: 33.21 ng/ml



#18 AR-1242-3

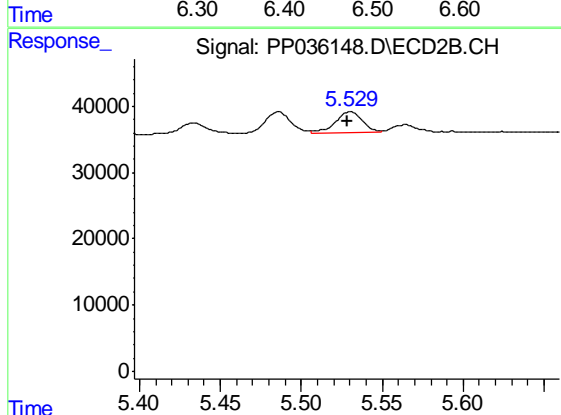
R.T.: 5.434 min  
 Delta R.T.: 0.003 min  
 Response: 19936  
 Conc: 37.17 ng/ml



#19 AR-1242-4

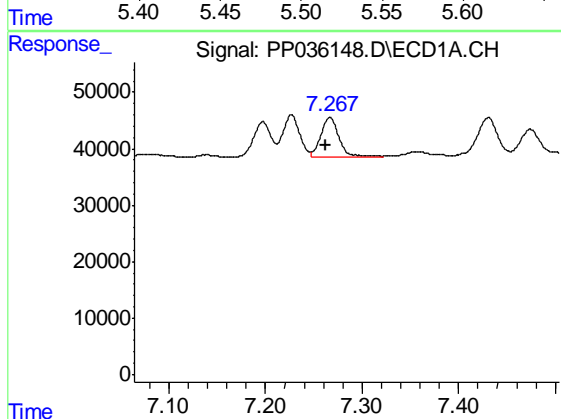
R.T.: 6.483 min  
 Delta R.T.: 0.002 min  
 Response: 34009  
 Conc: 37.24 ng/ml

Instrument :  
 ECD\_P  
 ClientSampleId :  
 LOQ-WATER-02-QT2-2021



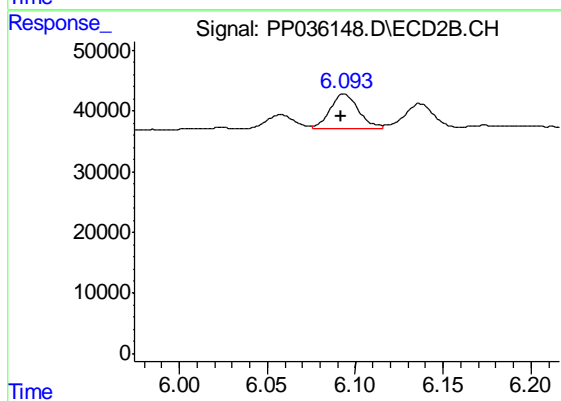
#19 AR-1242-4

R.T.: 5.530 min  
 Delta R.T.: 0.001 min  
 Response: 36717  
 Conc: 74.40 ng/ml



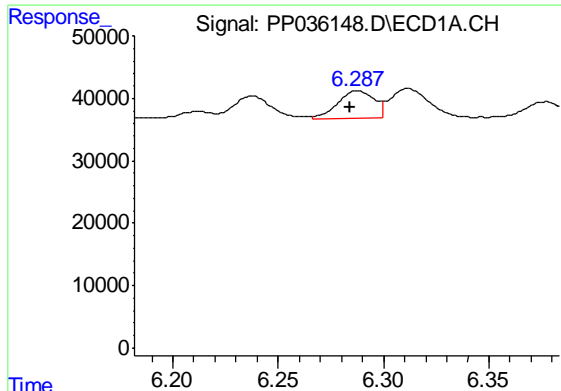
#20 AR-1242-5

R.T.: 7.267 min  
 Delta R.T.: 0.004 min  
 Response: 90017  
 Conc: 94.43 ng/ml



#20 AR-1242-5

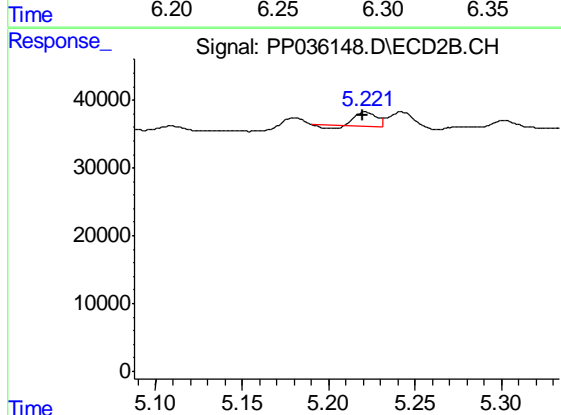
R.T.: 6.094 min  
 Delta R.T.: 0.002 min  
 Response: 63255  
 Conc: 97.75 ng/ml



#21 AR-1248-1

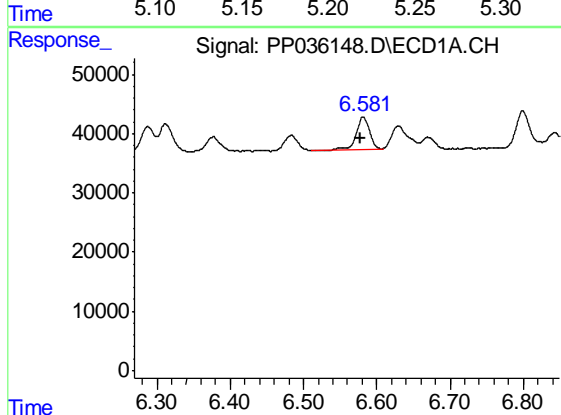
R.T.: 6.288 min  
 Delta R.T.: 0.004 min  
 Response: 53805  
 Conc: 57.79 ng/ml

Instrument :  
 ECD\_P  
 ClientSampleId :  
 LOQ-WATER-02-QT2-2021



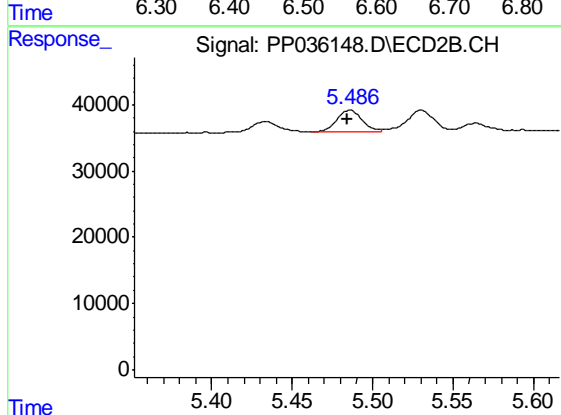
#21 AR-1248-1

R.T.: 5.221 min  
 Delta R.T.: 0.001 min  
 Response: 16987  
 Conc: 31.66 ng/ml



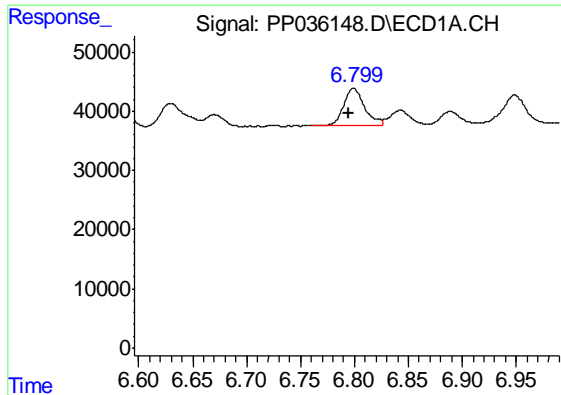
#22 AR-1248-2

R.T.: 6.581 min  
 Delta R.T.: 0.003 min  
 Response: 74067  
 Conc: 61.95 ng/ml



#22 AR-1248-2

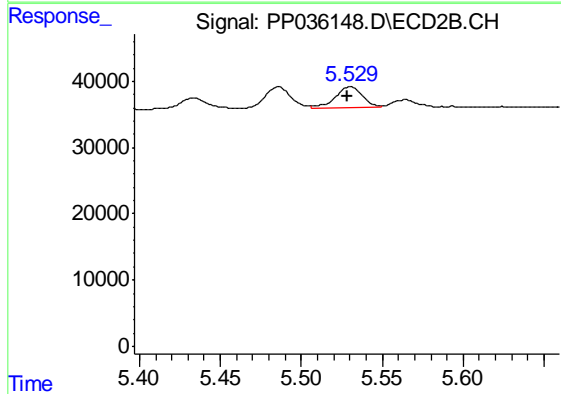
R.T.: 5.486 min  
 Delta R.T.: 0.002 min  
 Response: 35666  
 Conc: 51.11 ng/ml



#23 AR-1248-3

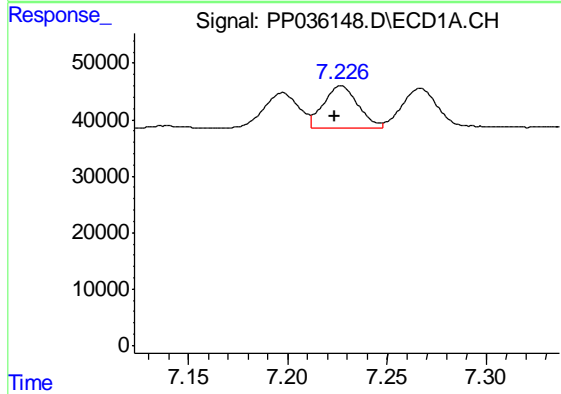
R.T.: 6.799 min  
 Delta R.T.: 0.004 min  
 Response: 82692  
 Conc: 57.07 ng/ml

Instrument :  
 ECD\_P  
 ClientSampleId :  
 LOQ-WATER-02-QT2-2021



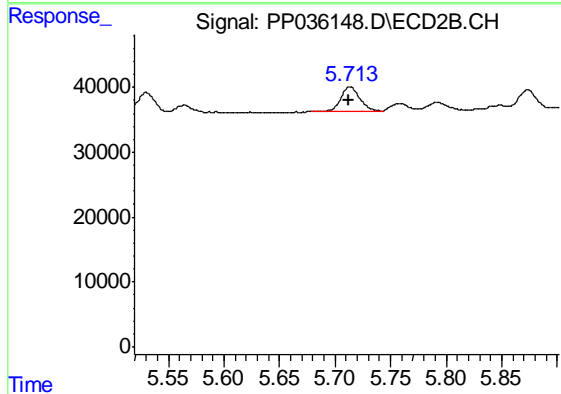
#23 AR-1248-3

R.T.: 5.530 min  
 Delta R.T.: 0.001 min  
 Response: 36717  
 Conc: 51.02 ng/ml



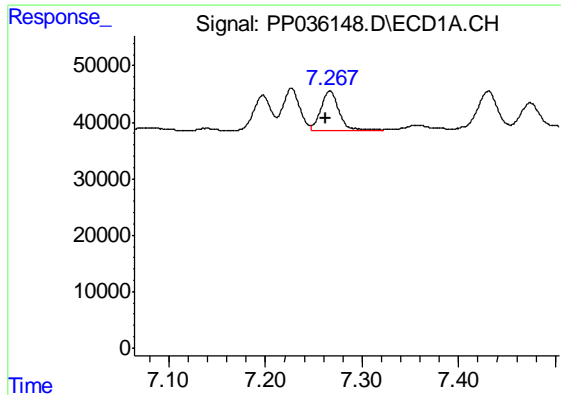
#24 AR-1248-4

R.T.: 7.227 min  
 Delta R.T.: 0.003 min  
 Response: 90671  
 Conc: 56.93 ng/ml



#24 AR-1248-4

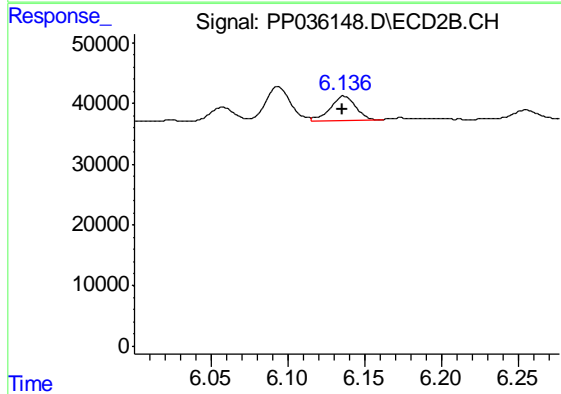
R.T.: 5.713 min  
 Delta R.T.: 0.001 min  
 Response: 45213  
 Conc: 51.19 ng/ml



#25 AR-1248-5

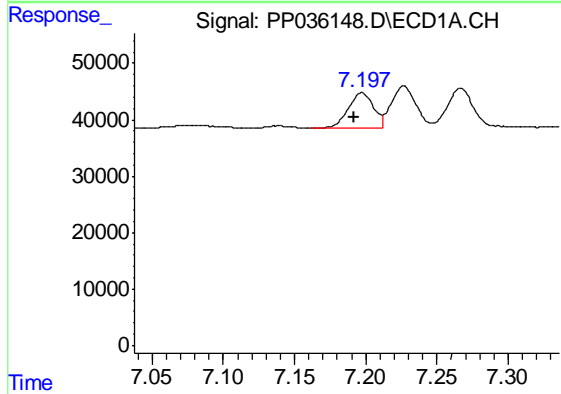
R.T.: 7.267 min  
 Delta R.T.: 0.004 min  
 Response: 90017  
 Conc: 57.66 ng/ml

Instrument :  
 ECD\_P  
 ClientSampleId :  
 LOQ-WATER-02-QT2-2021



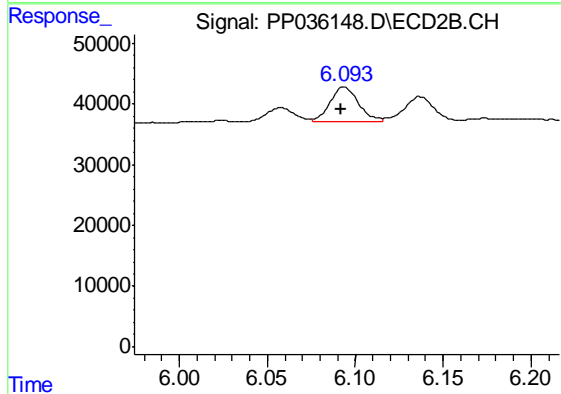
#25 AR-1248-5

R.T.: 6.137 min  
 Delta R.T.: 0.000 min  
 Response: 45240  
 Conc: 51.44 ng/ml



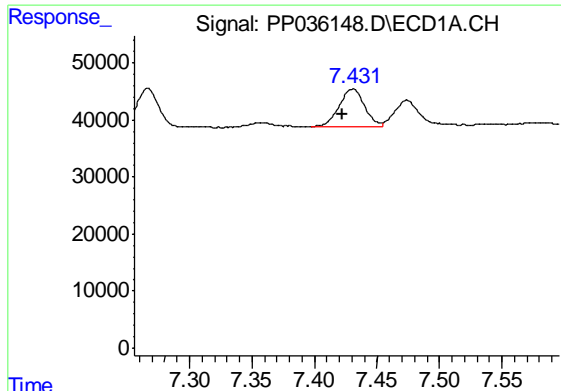
#26 AR-1254-1

R.T.: 7.197 min  
 Delta R.T.: 0.005 min  
 Response: 77773  
 Conc: 48.00 ng/ml



#26 AR-1254-1

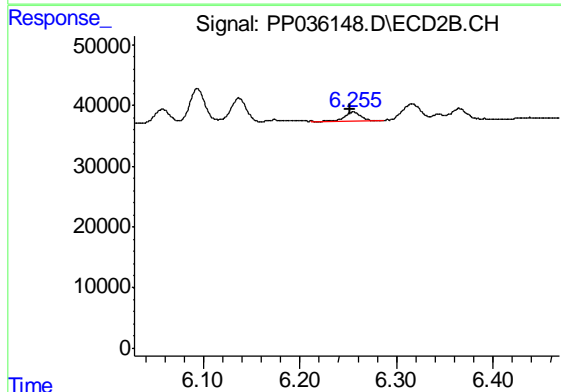
R.T.: 6.094 min  
 Delta R.T.: 0.002 min  
 Response: 63255  
 Conc: 48.40 ng/ml



#27 AR-1254-2

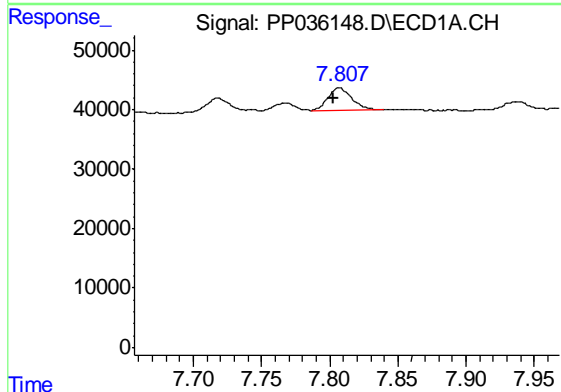
R.T.: 7.431 min  
Delta R.T.: 0.009 min  
Response: 93429  
Conc: 37.93 ng/ml

Instrument :  
ECD\_P  
ClientSampleId :  
LOQ-WATER-02-QT2-2021



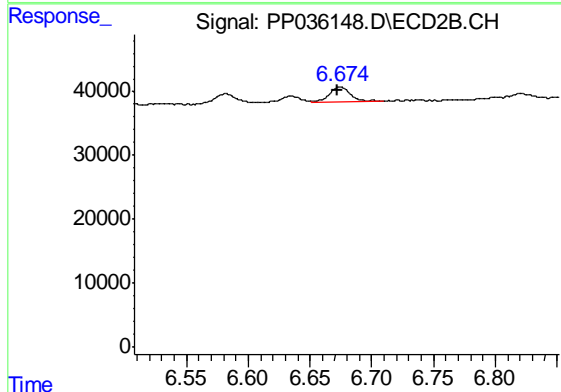
#27 AR-1254-2

R.T.: 6.255 min  
Delta R.T.: 0.002 min  
Response: 18522  
Conc: 16.06 ng/ml



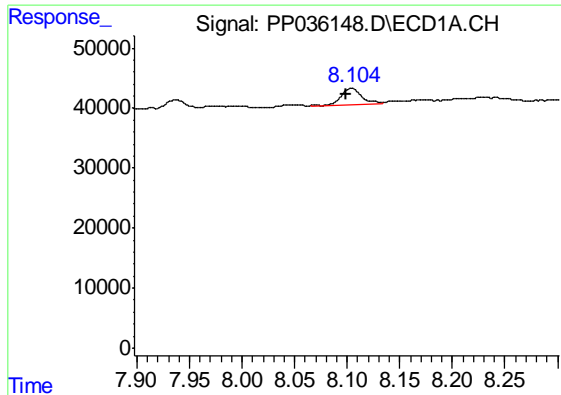
#28 AR-1254-3

R.T.: 7.807 min  
Delta R.T.: 0.004 min  
Response: 49211  
Conc: 18.65 ng/ml



#28 AR-1254-3

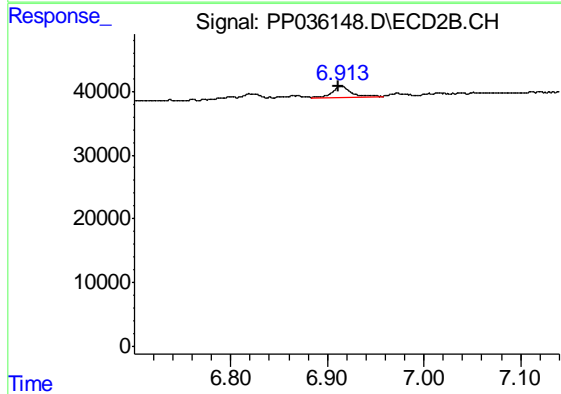
R.T.: 6.674 min  
Delta R.T.: 0.002 min  
Response: 27738  
Conc: 14.57 ng/ml



#29 AR-1254-4

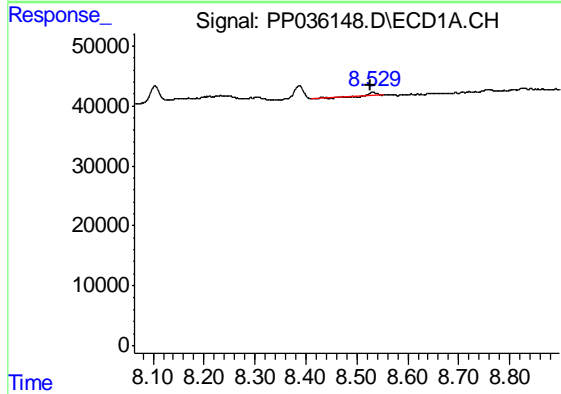
R.T.: 8.104 min  
 Delta R.T.: 0.005 min  
 Response: 38446  
 Conc: 19.05 ng/ml

Instrument :  
 ECD\_P  
 ClientSampleId :  
 LOQ-WATER-02-QT2-2021



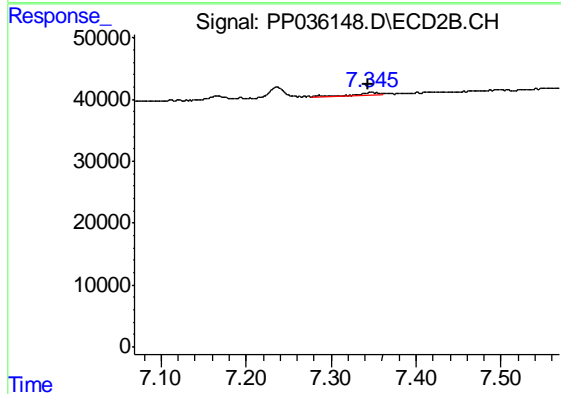
#29 AR-1254-4

R.T.: 6.914 min  
 Delta R.T.: 0.002 min  
 Response: 22687  
 Conc: 19.00 ng/ml



#30 AR-1254-5

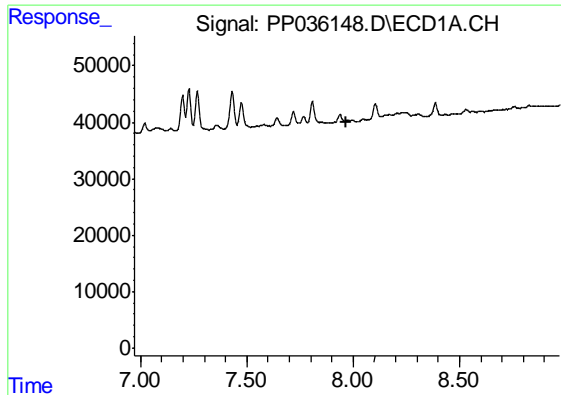
R.T.: 8.530 min  
 Delta R.T.: 0.002 min  
 Response: 5426  
 Conc: 2.39 ng/ml



#30 AR-1254-5

R.T.: 7.346 min  
 Delta R.T.: 0.003 min  
 Response: 8087  
 Conc: 4.74 ng/ml

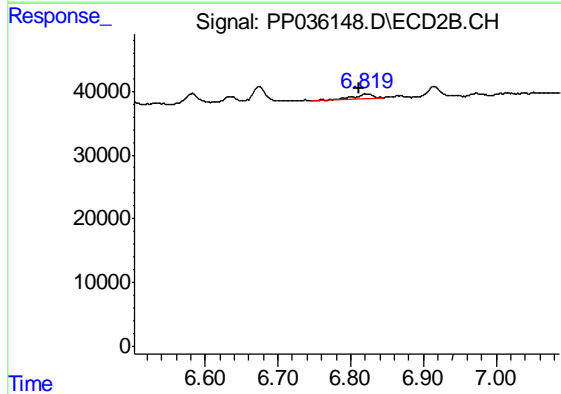




#31 AR-1260-1

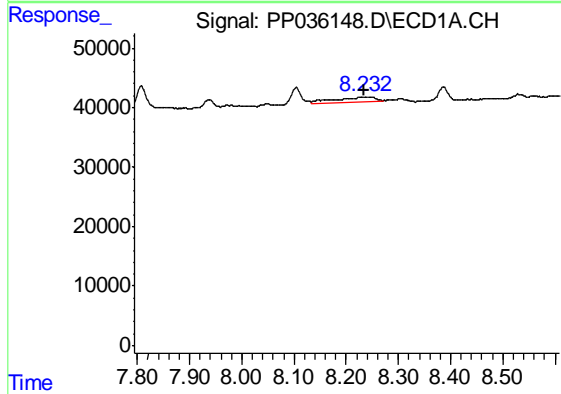
R.T.: 0.000 min  
 Exp R.T. : 7.970 min  
 Response: 0  
 Conc: N.D.

Instrument :  
 ECD\_P  
 ClientSampleId :  
 LOQ-WATER-02-QT2-2021



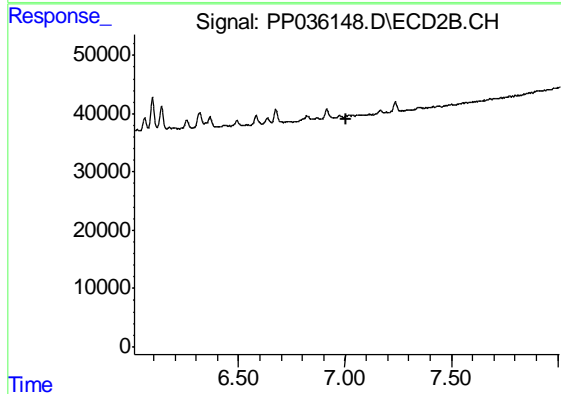
#31 AR-1260-1

R.T.: 6.820 min  
 Delta R.T.: 0.009 min  
 Response: 15391  
 Conc: 12.34 ng/ml



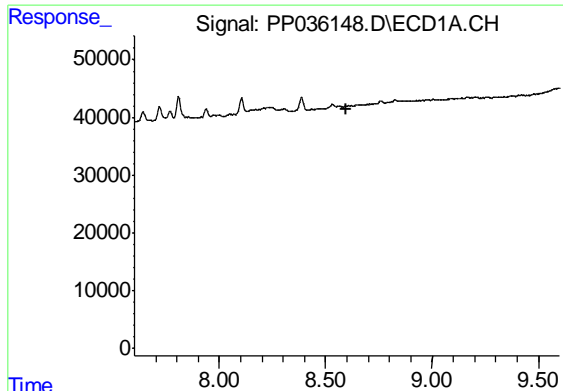
#32 AR-1260-2

R.T.: 8.232 min  
 Delta R.T.: -0.003 min  
 Response: 43844  
 Conc: 17.95 ng/ml



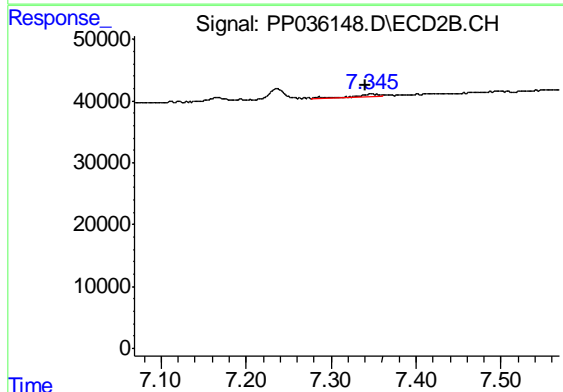
#32 AR-1260-2

R.T.: 0.000 min  
 Exp R.T. : 7.009 min  
 Response: 0  
 Conc: N.D.

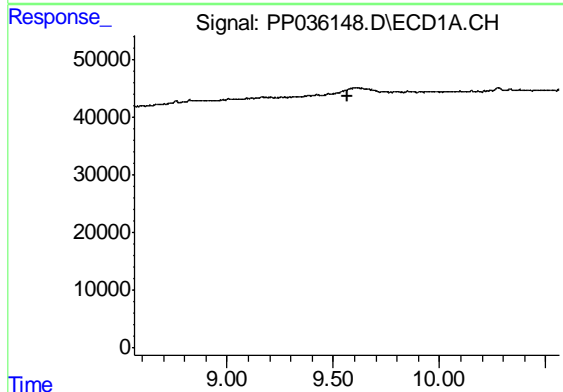


#36 AR-1262-1  
 R.T.: 0.000 min  
 Exp R.T. : 8.599 min  
 Response: 0  
 Conc: N.D.

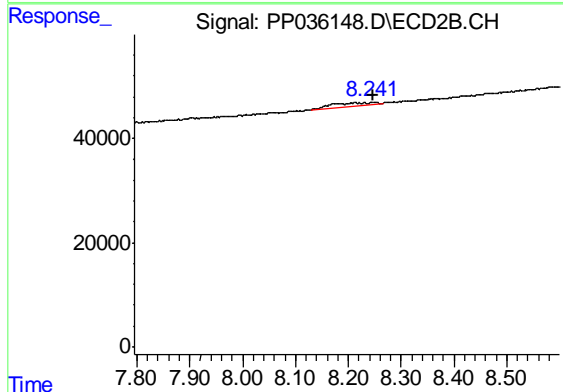
Instrument :  
 ECD\_P  
 ClientSampleId :  
 LOQ-WATER-02-QT2-2021



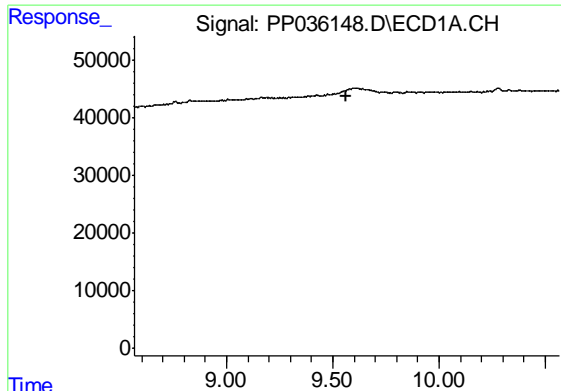
#36 AR-1262-1  
 R.T.: 7.346 min  
 Delta R.T.: 0.005 min  
 Response: 8087  
 Conc: 8.95 ng/ml



#39 AR-1262-4  
 R.T.: 0.000 min  
 Exp R.T. : 9.564 min  
 Response: 0  
 Conc: N.D.



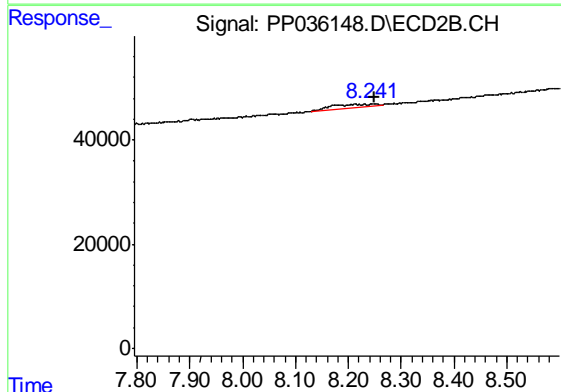
#39 AR-1262-4  
 R.T.: 8.254 min  
 Delta R.T.: 0.008 min  
 Response: 37578  
 Conc: 17.05 ng/ml



#42 AR-1268-2

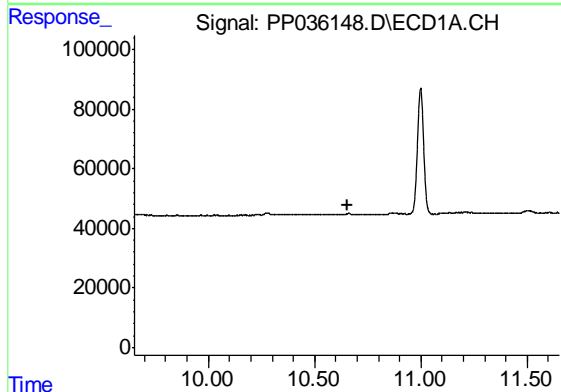
R.T.: 0.000 min  
 Exp R.T. : 9.566 min  
 Response: 0  
 Conc: N.D.

Instrument :  
 ECD\_P  
 ClientSampleId :  
 LOQ-WATER-02-QT2-2021



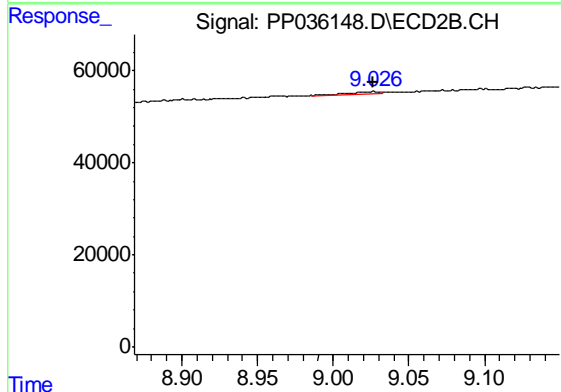
#42 AR-1268-2

R.T.: 8.254 min  
 Delta R.T.: 0.006 min  
 Response: 37578  
 Conc: 12.17 ng/ml



#45 AR-1268-5

R.T.: 0.000 min  
 Exp R.T. : 10.652 min  
 Response: 0  
 Conc: N.D.



#45 AR-1268-5

R.T.: 9.028 min  
 Delta R.T.: 0.001 min  
 Response: 4909  
 Conc: 0.57 ng/ml