

Data Path : Z:\pestpcbsrv\HPCHEM1\ECD_P\Data\PP052621\
 Data File : PP036177.D
 Signal(s) : Signal #1: ECD1A.CH Signal #2: ECD2B.CH
 Acq On : 27 May 2021 5:08
 Operator : DD\AJ
 Sample : M2262-03
 Misc : AR1221 MDL 25 PPB
 ALS Vial : 58 Sample Multiplier: 1

Instrument :
 ECD_P
ClientSampleId :
 MDL-SOIL-03-QT2-2021

Integration File signal 1: autoint1.e
 Integration File signal 2: autoint2.e
 Quant Time: May 27 08:00:56 2021
 Quant Method : Z:\pestpcbsrv\HPCHEM1\ECD_P\methods\PP052521.M
 Quant Title : GC EXTRACTABLES
 QLast Update : Wed May 26 00:48:29 2021
 Response via : Initial Calibration
 Integrator: ChemStation 6890 Scale Mode: Small noise peaks clipped

Volume Inj. : 2 µl
 Signal #1 Phase : ZB-MR1 Signal #2 Phase: ZB-MR2
 Signal #1 Info : 30Mx0.32mmx 0.50µ Signal #2 Info : 30M x 0.32mm x 0.25µm

Compound	RT#1	RT#2	Resp#1	Resp#2	ng/ml	ng/ml

System Monitoring Compounds						
1) SA Tetrachlo...	4.966	3.964	891556	558200	20.031	20.001
2) SA Decachlor...	10.997	9.273	920986	492928	21.550	21.486
Target Compounds						
8) L2 AR-1221-1	5.215	4.223	14653	9201	26.664	28.962
9) L2 AR-1221-2	5.316	4.317	21817	13902	52.339	57.744
10) L2 AR-1221-3	5.401	4.409	37306	19437	29.734	25.183
11) L3 AR-1232-1	5.401	4.409	37306	19437	38.608	33.228
38) L8 AR-1262-3	0.000	8.172	0	575	N.D.	0.484 #
41) L9 AR-1268-1	0.000	8.172	0	575	N.D.	0.169 #

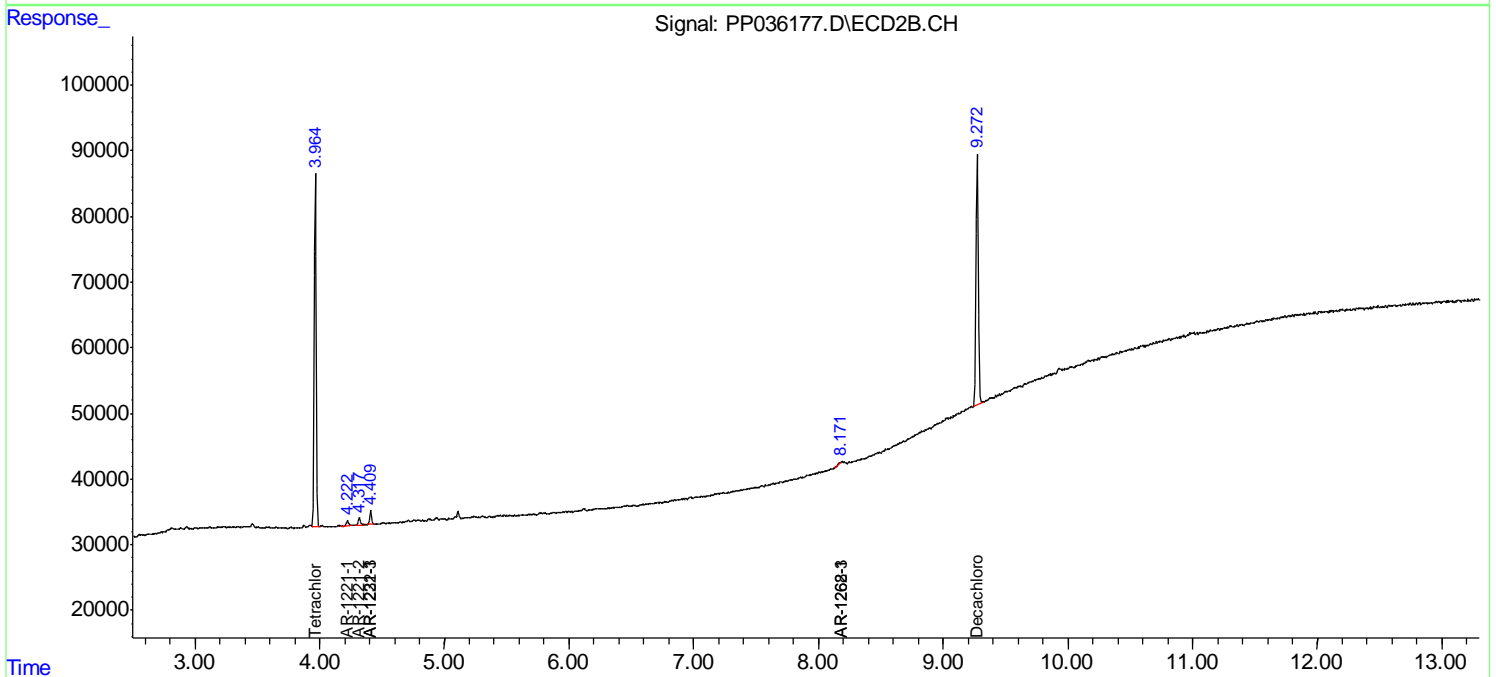
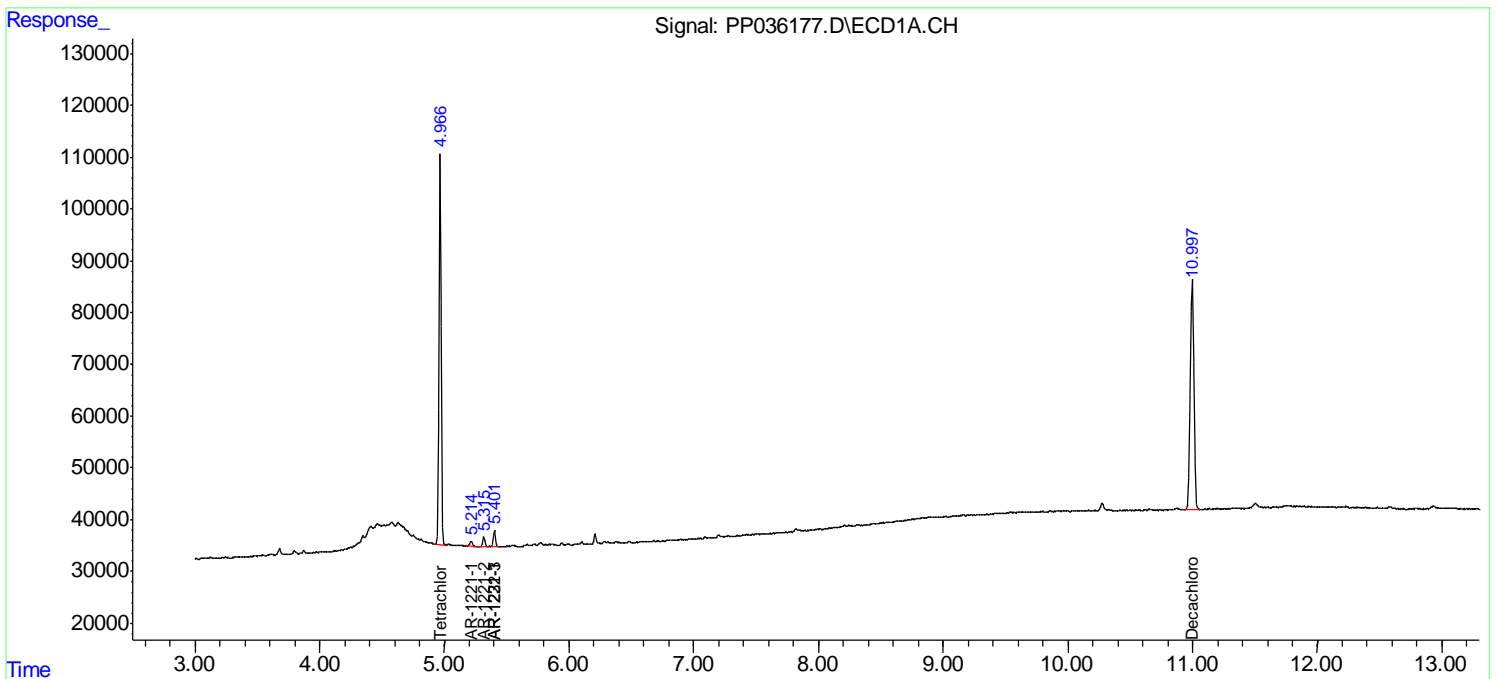
(f)=RT Delta > 1/2 Window (#)=Amounts differ by > 25% (m)=manual int.

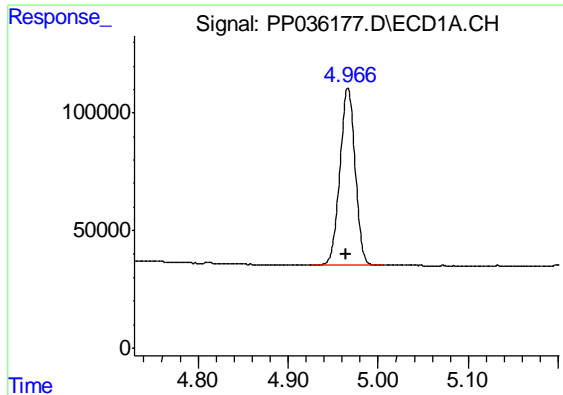
Data Path : Z:\pestpcbsrv\HPCHEM1\ECD_P\Data\PP052621\
 Data File : PP036177.D
 Signal(s) : Signal #1: ECD1A.CH Signal #2: ECD2B.CH
 Acq On : 27 May 2021 5:08
 Operator : DD\AJ
 Sample : M2262-03
 Misc : AR1221 MDL 25 PPB
 ALS Vial : 58 Sample Multiplier: 1

Instrument :
 ECD_P
Client Sampled :
 MDL-SOIL-03-QT2-2021

Integration File signal 1: autoint1.e
 Integration File signal 2: autoint2.e
 Quant Time: May 27 08:00:56 2021
 Quant Method : Z:\pestpcbsrv\HPCHEM1\ECD_P\methods\PP052521.M
 Quant Title : GC EXTRACTABLES
 QLast Update : Wed May 26 00:48:29 2021
 Response via : Initial Calibration
 Integrator: ChemStation 6890 Scale Mode: Small noise peaks clipped

Volume Inj. : 2 µl
 Signal #1 Phase : ZB-MR1 Signal #2 Phase: ZB-MR2
 Signal #1 Info : 30Mx0.32mmx 0.50µ Signal #2 Info : 30M x 0.32mm x 0.25µm

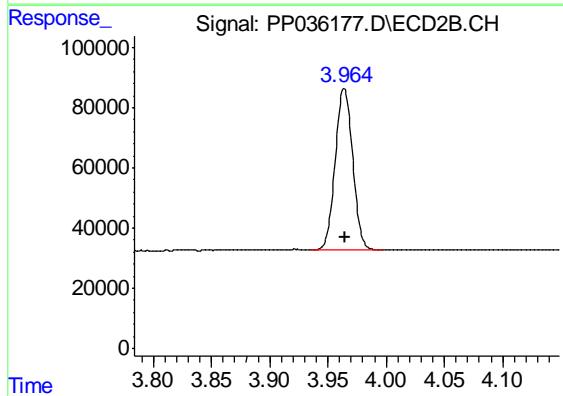




#1 Tetrachloro-m-xylene

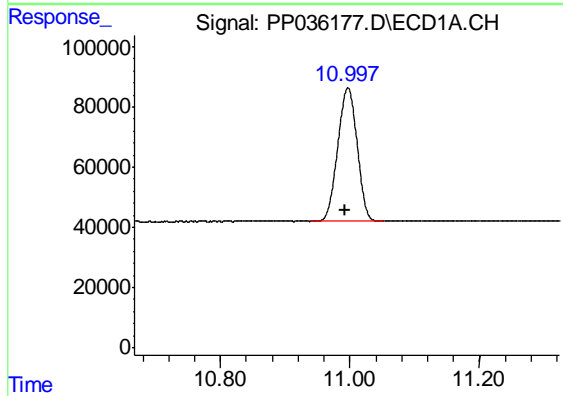
R.T.: 4.966 min
 Delta R.T.: 0.002 min
 Response: 891556
 Conc: 20.03 ng/ml

Instrument :
 ECD_P
 ClientSampleId :
 MDL-SOIL-03-QT2-2021



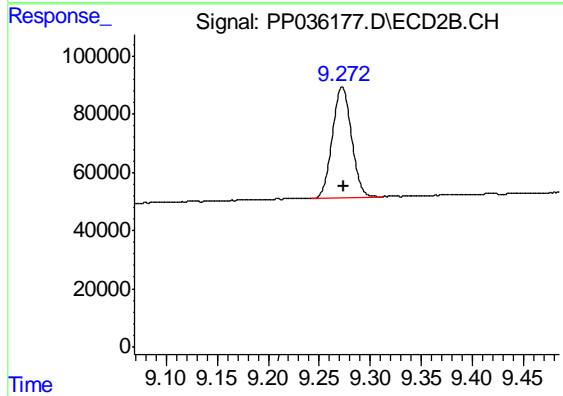
#1 Tetrachloro-m-xylene

R.T.: 3.964 min
 Delta R.T.: 0.000 min
 Response: 558200
 Conc: 20.00 ng/ml



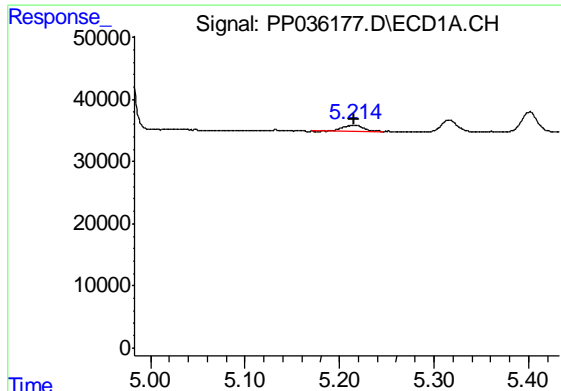
#2 Decachlorobiphenyl

R.T.: 10.997 min
 Delta R.T.: 0.005 min
 Response: 920986
 Conc: 21.55 ng/ml



#2 Decachlorobiphenyl

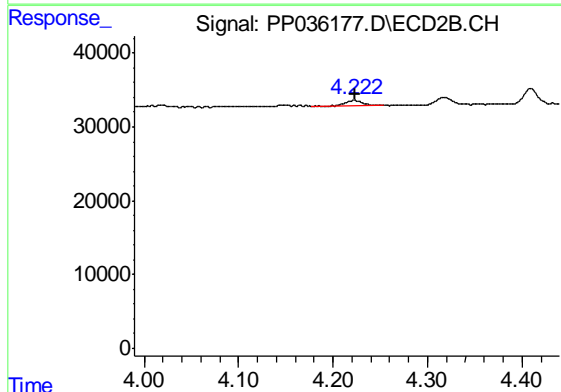
R.T.: 9.273 min
 Delta R.T.: -0.002 min
 Response: 492928
 Conc: 21.49 ng/ml



#8 AR-1221-1

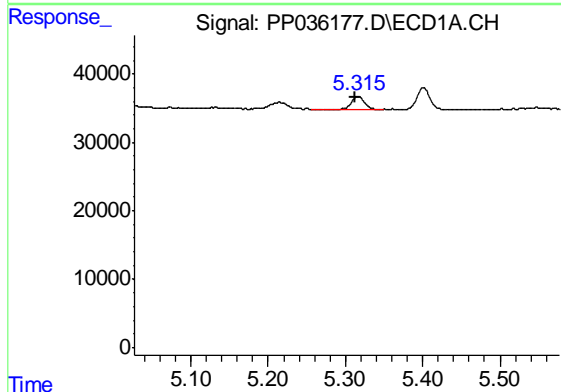
R.T.: 5.215 min
 Delta R.T.: 0.000 min
 Response: 14653
 Conc: 26.66 ng/ml

Instrument :
 ECD_P
ClientSampleId :
 MDL-SOIL-03-QT2-2021



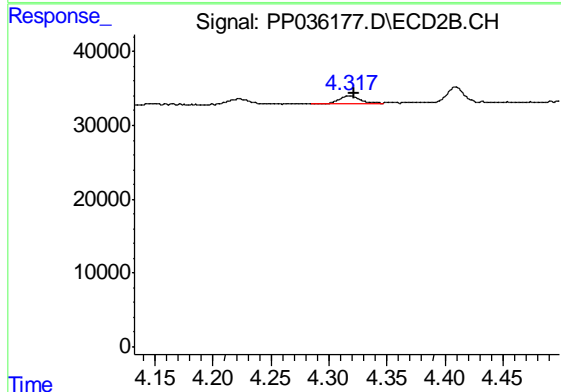
#8 AR-1221-1

R.T.: 4.223 min
 Delta R.T.: 0.000 min
 Response: 9201
 Conc: 28.96 ng/ml



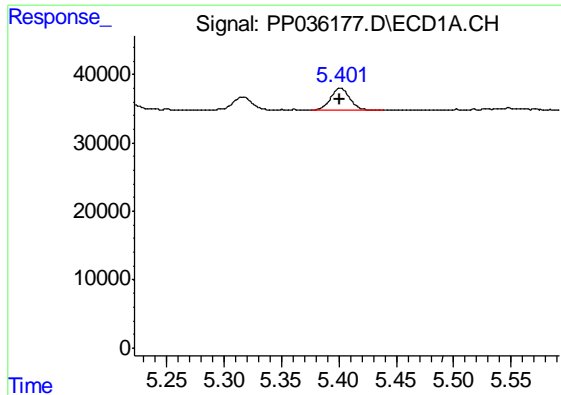
#9 AR-1221-2

R.T.: 5.316 min
 Delta R.T.: 0.003 min
 Response: 21817
 Conc: 52.34 ng/ml



#9 AR-1221-2

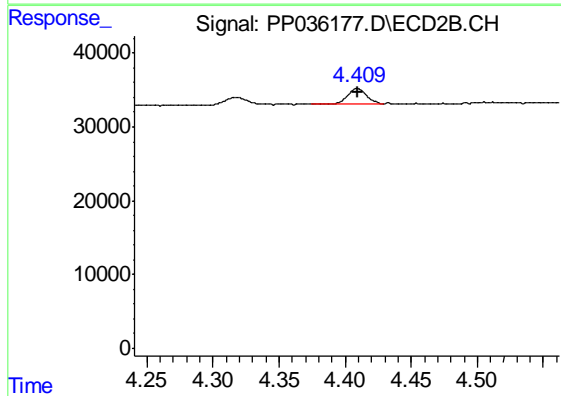
R.T.: 4.317 min
 Delta R.T.: -0.004 min
 Response: 13902
 Conc: 57.74 ng/ml



#10 AR-1221-3

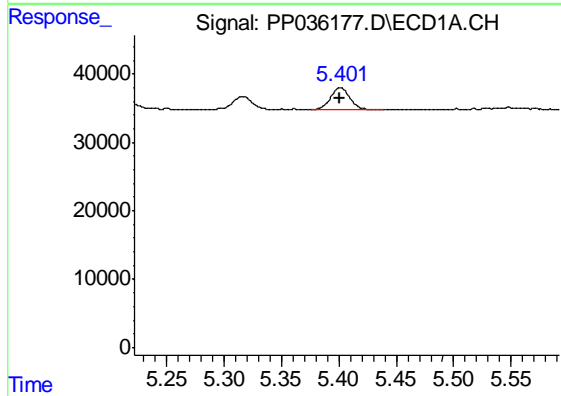
R.T.: 5.401 min
 Delta R.T.: 0.000 min
 Response: 37306
 Conc: 29.73 ng/ml

Instrument :
 ECD_P
 ClientSampleId :
 MDL-SOIL-03-QT2-2021



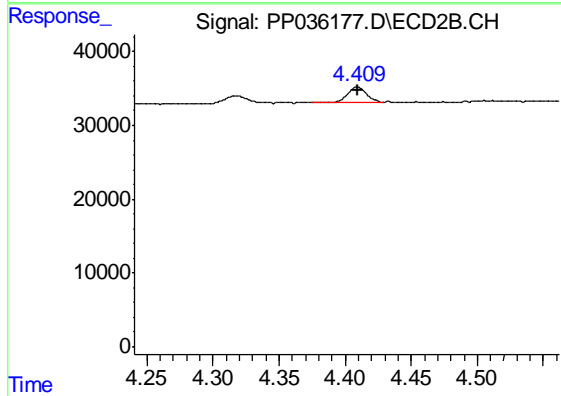
#10 AR-1221-3

R.T.: 4.409 min
 Delta R.T.: 0.000 min
 Response: 19437
 Conc: 25.18 ng/ml



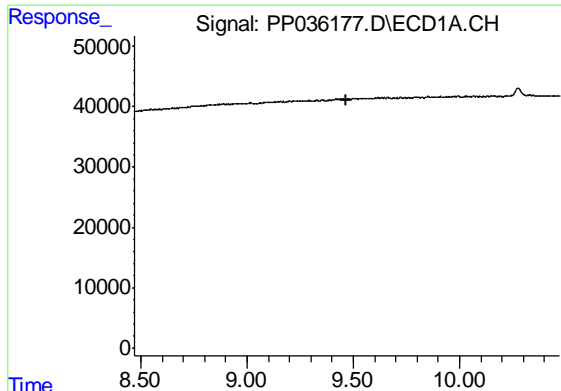
#11 AR-1232-1

R.T.: 5.401 min
 Delta R.T.: 0.000 min
 Response: 37306
 Conc: 38.61 ng/ml



#11 AR-1232-1

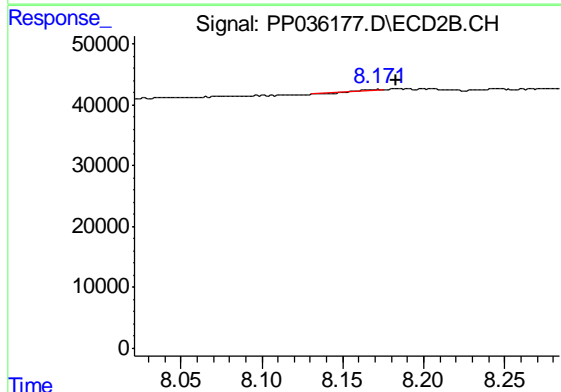
R.T.: 4.409 min
 Delta R.T.: 0.000 min
 Response: 19437
 Conc: 33.23 ng/ml



#38 AR-1262-3

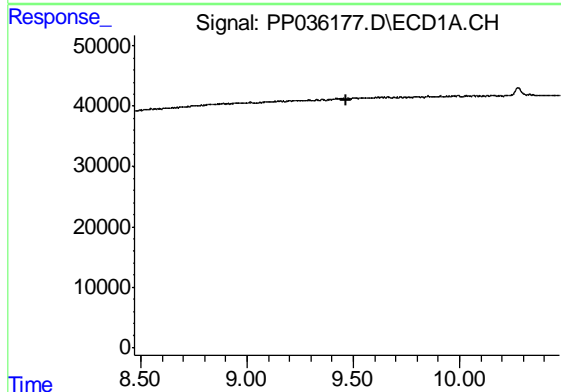
R.T.: 0.000 min
 Exp R.T. : 9.470 min
 Response: 0
 Conc: N.D.

Instrument :
 ECD_P
 ClientSampleId :
 MDL-SOIL-03-QT2-2021



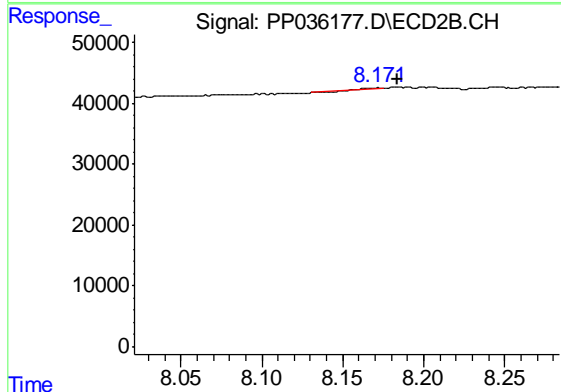
#38 AR-1262-3

R.T.: 8.172 min
 Delta R.T.: -0.011 min
 Response: 575
 Conc: 0.48 ng/ml



#41 AR-1268-1

R.T.: 0.000 min
 Exp R.T. : 9.470 min
 Response: 0
 Conc: N.D.



#41 AR-1268-1

R.T.: 8.172 min
 Delta R.T.: -0.013 min
 Response: 575
 Conc: 0.17 ng/ml